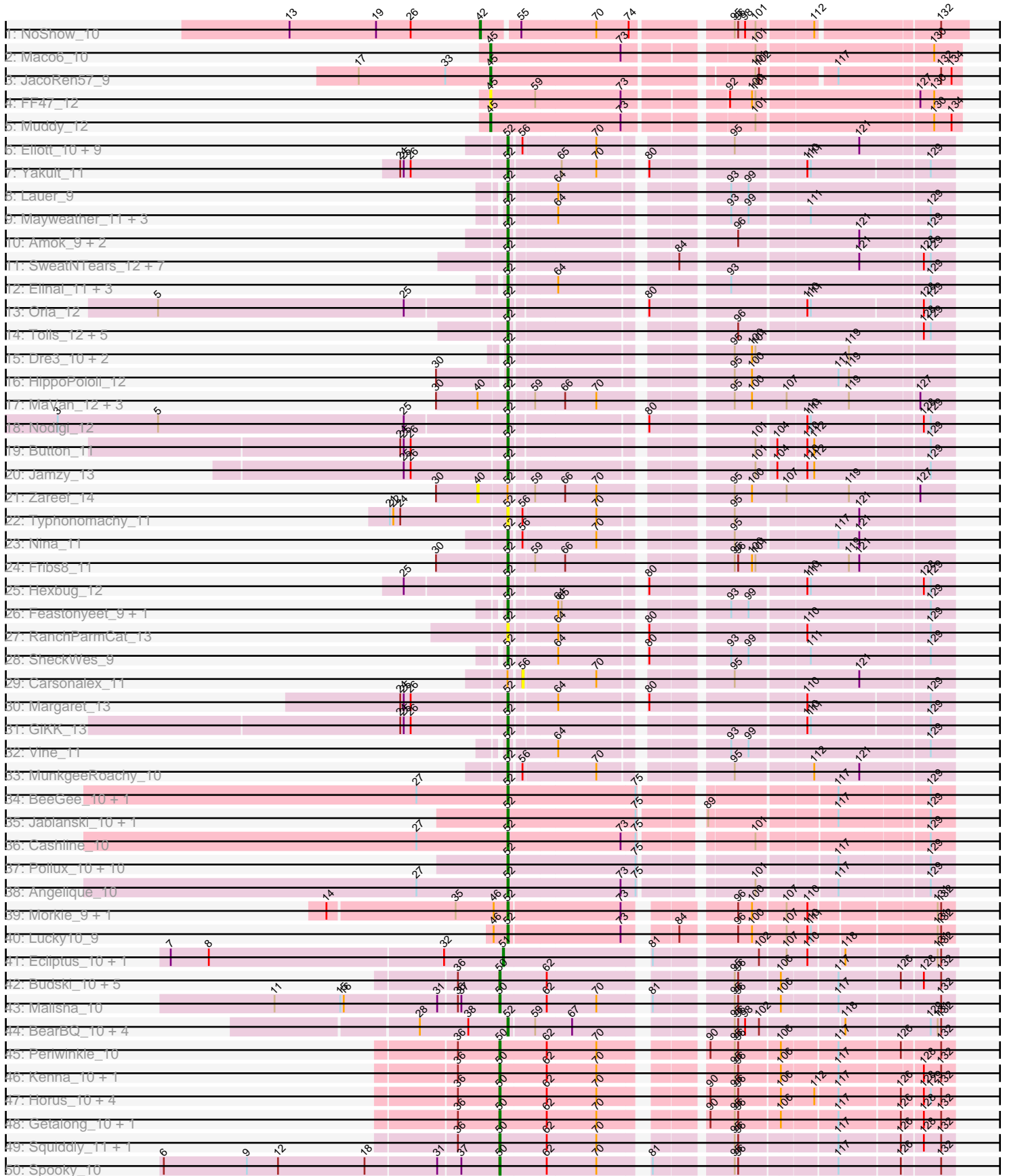
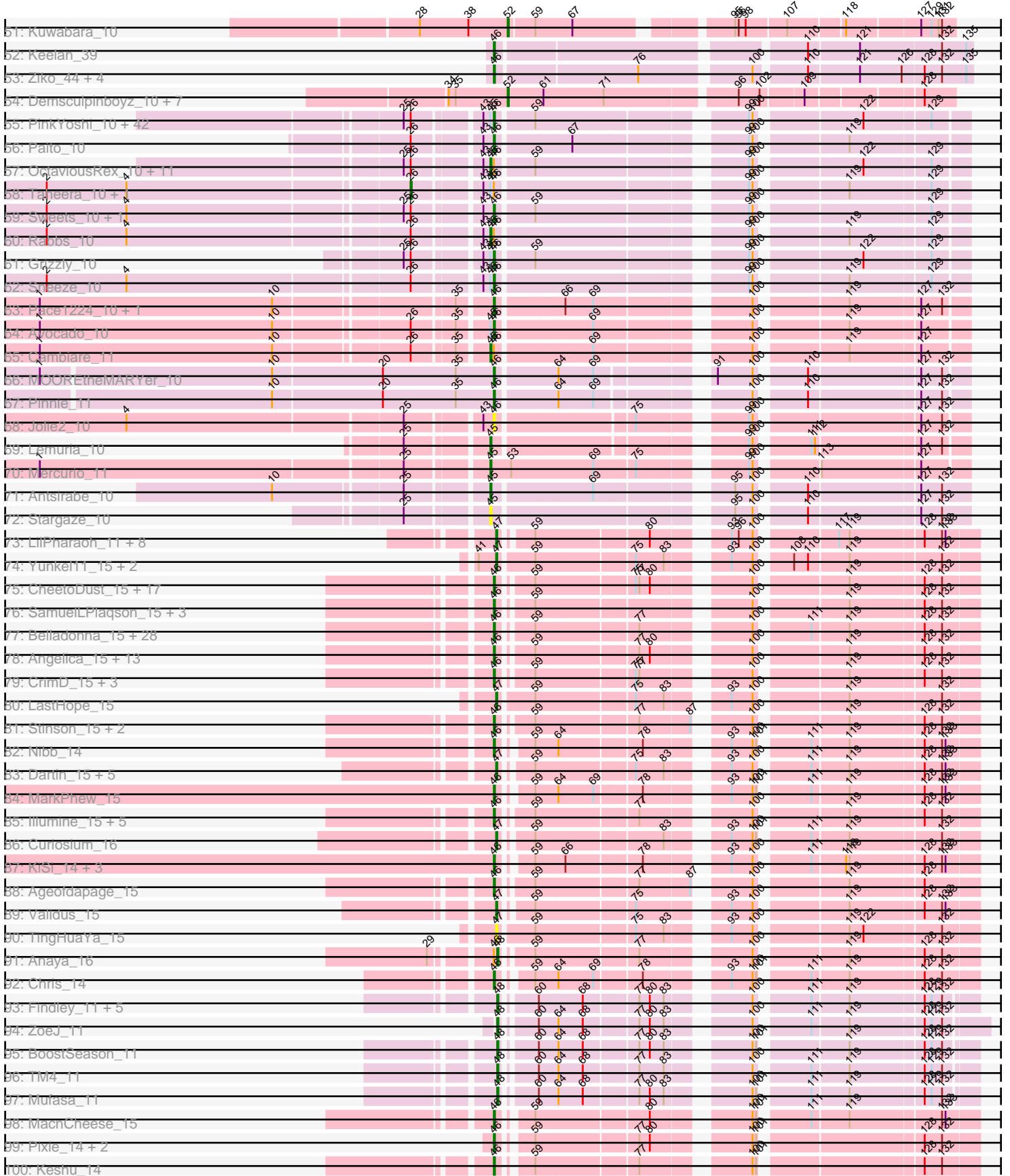


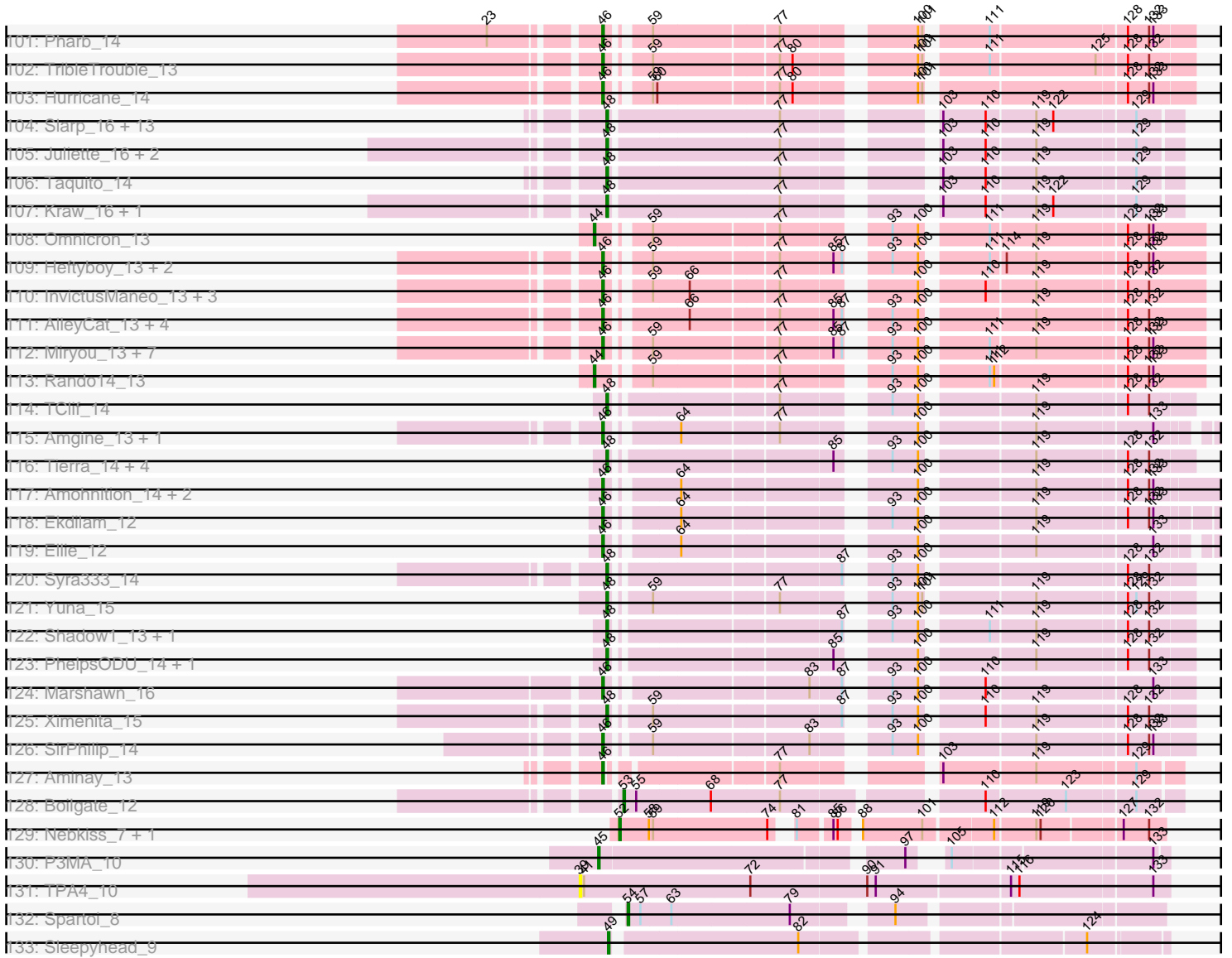
Pham 196203



Pham 196203



Pham 196203



Note: Tracks are now grouped by subcluster and scaled. Switching in subcluster is indicated by changes in track color. Track scale is now set by default to display the region 30 bp upstream of start 1 to 30 bp downstream of the last possible start. If this default region is judged to be packed too tightly with annotated starts, the track will be further scaled to only show that region of the ORF with annotated starts. This action will be indicated by adding "Zoomed" to the title. For starts, yellow indicates the location of called starts comprised solely of Glimmer/GeneMark auto-annotations, green indicates the location of called starts with at least 1 manual gene annotation.

Pham 196203 Report

This analysis was run 12/09/24 on database version 580.

Pham number 196203 has 403 members, 28 are drafts.

Phages represented in each track:

- Track 1 : NoShow_10
- Track 2 : Maco6_10
- Track 3 : JacoRen57_9
- Track 4 : FF47_12
- Track 5 : Muddy_12
- Track 6 : Elliott_10, Burnsey_10, Agatha_10, Cozz_10, PsychoKiller_10, Quasar_10, Sopespian_10, GoldHunter_11, Axym_10, RedBaron_11
- Track 7 : Yakult_11
- Track 8 : Lauer_9
- Track 9 : Mayweather_11, MAnor_10, CherryonLim_11, Pons_10
- Track 10 : Amok_9, AikoCarson_9, Emalyn_9
- Track 11 : SweatNTears_12, MScarn_12, SketchMex_9, Troje_10, Horseradish_11, Yummy_11, Biskit_11, Buttrmlkdreams_10
- Track 12 : Elinal_11, PotPie_10, KayGee_10, SummitAcademy_9
- Track 13 : Orla_12
- Track 14 : Tolls_12, SteamedHams_12, GTE2_08, AndPeggy_9, BillDoor_12, Yarn_9
- Track 15 : Dre3_10, Cleo_10, Gibbous_10
- Track 16 : HippoPololi_12
- Track 17 : MaVan_12, Azira_12, Nibbles_12, Survivors_12
- Track 18 : Nodigi_12
- Track 19 : Button_11
- Track 20 : Jamzy_13
- Track 21 : Zareef_14
- Track 22 : Typhonomachy_11
- Track 23 : Nina_11
- Track 24 : Fribs8_11
- Track 25 : Hexbug_12
- Track 26 : Feastonyeet_9, BigChungus_9
- Track 27 : RanchParmCat_13
- Track 28 : SheckWes_9
- Track 29 : Carsonalex_11
- Track 30 : Margaret_13
- Track 31 : GiKK_13
- Track 32 : Vine_11
- Track 33 : MunkgeeRoachy_10
- Track 34 : BeeGee_10, Wrigley_10

- Track 35 : Jablanski_10, Pytheas_10
- Track 36 : Cashline_10
- Track 37 : Pollux_10, BritBrat_10, LonelyBoi_10, EMSquaredA_10, Lilas_10, Posh_10, Bradissa_10, Floral_10, EnalisNailo_10, Confidence_10, Marteena_10
- Track 38 : Angelique_10
- Track 39 : Morkie_9, PhorbesPhlower_9
- Track 40 : Lucky10_9
- Track 41 : Ecliptus_10, ODay_10
- Track 42 : Budski_10, Phabuloso_10, CheeseTouch_10, Holliday_10, LitninMcQueen_10, Kamaru_10
- Track 43 : Malisha_10
- Track 44 : BearBQ_10, MortyNRick_10, Birdsong_10, Crater_10, Apricot_10
- Track 45 : Periwinkle_10
- Track 46 : Kenna_10, Lutum_10
- Track 47 : Horus_10, BENtherdunthat_10, Frickyeah_10, Leroy_10, Asapag_10
- Track 48 : Getalong_10, Whitney_10
- Track 49 : Squiddly_11, Phistory_10
- Track 50 : Spooky_10
- Track 51 : Kuwabara_10
- Track 52 : Keelan_39
- Track 53 : Ziko_44, Volt_43, Fryberger_41, Ronaldo_44, Guey18_46
- Track 54 : Demsculpinboyz_10, Avani_10, Soul22_10, Che9d_10, Zapner_11, Blarby_11, Jabbawokkie_11, Yoshi_10
- Track 55 : PinkYoshi_10, Jolene_10, CassieYates_10, Angel_10, ECartman_10, Periodt_10, Schiebel_10, Barkley26_10, Hope_10, Hotshotbaby7_10, Marmie_10, Cedasite_10, Renaissance_10, AzulaCat_10, BPs_10, ZoMa_10, BQuat_10, Peeb_10, DMoney_10, DNAllI_0010, Maliketh_10, Cherrybomb426_10, Plagueis_10, Kareem_10, Mowgli_10, Chance64_10, BruceB_10, TomBrady_10, Liefie_10, Crespo_10, Frosty24_10, Kasen3_10, Olga_10, Camri_10, JorRay_10, ShaboiShabazz_10, Wendigo_10, Avrafan_10, Jonghyun_10, Phish_10, Sizemore_10, GoldenAsh_10, Coleslaw_10
- Track 56 : Paito_10
- Track 57 : OctaviousRex_10, Gideon_10, LouisV14_10, Aroostook_10, Darionha_10, Gomashi_10, CLED96_10, Remy19_10, Zombie_10, Annihilator_10, Phreak_10, Jane_10
- Track 58 : Taheera_10, Terror_10
- Track 59 : Sweets_10, Halo_10
- Track 60 : Rabbs_10
- Track 61 : Grizzly_10
- Track 62 : Sneeze_10
- Track 63 : Pace1224_10, FlagStaff_10
- Track 64 : Avocado_10
- Track 65 : Cambiare_11
- Track 66 : MOOREtheMARYer_10
- Track 67 : Pinnie_11
- Track 68 : Jolie2_10
- Track 69 : Lemuria_10
- Track 70 : Mercurio_11
- Track 71 : Antsirabe_10
- Track 72 : Stargaze_10
- Track 73 : LilPharaoh_11, Nutello_11, SgtBeansprout_11, Mdavu_11, Enkosi_11, Amelie_11, Biglebops_11, Torres_11, Nikao_11
- Track 74 : Yunkel11_15, Efra2_15, Guanica15_15

- Track 75 : CheetoDust_15, Mynx_15, BaghaKamala_15, Beezoo_15, Ramen_15, Rapunzel97_15, Geraldini_15, Zabiza_15, Slimphazie_15, YoureAdopted_14, Jayhawk_15, Apocalypse_15, Adephagia_15, ActinUp_15, Joy99_15, HedwigODU_15, MeaningOfLife_15, TruffulaTree_15
- Track 76 : SamuelLPlaqson_15, Urkel_15, TiniBug_15, DrHayes_15
- Track 77 : Belladonna_15, Rosmarinus_15, Peel_15, CREW_15, Inky_15, Capricorn_15, Lunahalos_15, Durfee_15, Jarvi_15, BGlluviae_15, Piatt_15, Boiiii_15, Hyperbowlee_15, Spock_15, Twitch_15, Llorens_15, BarrelRoll_15, CaseJules_15, Asayake_15, Padfoot_15, JAWS_15, Blizzard_15, BEEST_15, Homura_15, ShiaSurprise_15, Dalmuri_15, Jeckyll_15, Veliki_15, Topper_15
- Track 78 : Angelica_15, Ganymede_15, AlishaPH_15, Atiba_15, Zavala_15, Tachez_15, Deby_15, Pokerus_14, QuincyRose_14, Emerson_15, Padpat_15, Tiri_15, Adonis_15, Sulley_15
- Track 79 : CrimD_15, TreyKay_15, Prithvi_15, LindNT_15
- Track 80 : LastHope_15
- Track 81 : Stinson_15, Murucutumbu_15, LaterM_15
- Track 82 : Nibb_14
- Track 83 : Dartin_15, Peanam_15, Shaobing_15, McMater_15, Niklas_15, Richo_15
- Track 84 : MarkPhew_15
- Track 85 : Illumine_15, Megsy_15, Devera_15, Bella96_15, Dole_15, TaiwanKao_15
- Track 86 : Curiosium_16
- Track 87 : KiSi_14, Oscar_14, LeMond_14, Scarlett_14
- Track 88 : Ageofdapage_15
- Track 89 : Validus_15
- Track 90 : TingHuaYa_15
- Track 91 : Anaya_16
- Track 92 : Chris_14
- Track 93 : Findley_11, Strobilo_11, Milly_11, DismalFunk_11, DismalStressor_11, Marcoliusprime_11
- Track 94 : ZoeJ_11
- Track 95 : BoostSeason_11
- Track 96 : TM4_11
- Track 97 : Mufasa_11
- Track 98 : MacnCheese_15
- Track 99 : Pixie_14, ShedlockHolmes_14, TBond007_14
- Track 100 : Keshu_14
- Track 101 : Pharb_14
- Track 102 : TribbleTrouble_13
- Track 103 : Hurricane_14
- Track 104 : Slarp_16, OmniCritical_16, Y2_16, MissDaisy_16, Fionnbharth_16, Y10_16, Reptar3000_16, Wintermute_16, Mitti_16, Cheetobro_16, Patt_16, JF1_16, Chancellor_16, SamScheppers_14
- Track 105 : Juliette_16, Eponine_16, Ruthiejr_15
- Track 106 : Taquito_14
- Track 107 : Kraw_16, Malthus_16
- Track 108 : Omnicron_13
- Track 109 : Heftyboy_13, SoSeph_13, Leston_13
- Track 110 : InvictusManeo_13, Kratio_12, Agent47_13, Collard_13
- Track 111 : AlleyCat_13, Edugator_12, Psycho_13, Dadosky_13, Larva_13
- Track 112 : Miryou_13, Guillsminger_13, Paola_13, Thyatira_13, Feyre_13, OkiRoe_13, Waterfoul_13, Gengar_13
- Track 113 : Rando14_13

- Track 114 : TClif_14
- Track 115 : Amgine_13, Fefferhead_14
- Track 116 : Tierra_14, Cain_14, Krueger_14, Phrank_14, Bryler_14
- Track 117 : Amohnition_14, Hammy_14, DarthP_14
- Track 118 : Ekdilam_12
- Track 119 : Ellie_12
- Track 120 : Syra333_14
- Track 121 : Yuna_15
- Track 122 : Shadow1_13, Sunflower1121_13
- Track 123 : PhelpsODU_14, Unicorn_14
- Track 124 : Marshawn_16
- Track 125 : Ximenita_15
- Track 126 : SirPhilip_14
- Track 127 : Aminay_13
- Track 128 : Boilgate_12
- Track 129 : Nebkiss_7, Gaia_7
- Track 130 : P3MA_10
- Track 131 : TPA4_10
- Track 132 : Spartoi_8
- Track 133 : Sleepyhead_9

Summary of Final Annotations (See graph section above for start numbers):

The start number called the most often in the published annotations is 46, it was called in 178 of the 375 non-draft genes in the pham.

Genes that call this "Most Annotated" start:

- ActinUp_15, Adephegia_15, Adonis_15, Agent47_13, Ageofdapage_15, AlishaPH_15, AlleyCat_13, Amgine_13, Aminay_13, Amohnition_14, Angel_10, Angelica_15, Apocalypse_15, Asayake_15, Atiba_15, Avocado_10, Avrafan_10, AzulaCat_10, BEEST_15, BGlluviae_15, BPs_10, BQuat_10, BaghaKamala_15, Barkley26_10, BarrelRoll_15, Beezoo_15, Bella96_15, Belladonna_15, Blizzard_15, Boiiii_15, BruceB_10, CREW_15, Camri_10, Capricorn_15, CaseJules_15, CassieYates_10, Cedasite_10, Chance64_10, CheetoDust_15, Cherrybomb426_10, Chris_14, Coleslaw_10, Collard_13, Crespo_10, CrimD_15, DMoney_10, DNAIII_0010, Dadosky_13, Dalmuri_15, DarthP_14, Deby_15, Devera_15, Dole_15, DrHayes_15, Durfee_15, ECartman_10, Edugator_12, Ekdilam_12, Ellie_12, Emerson_15, Fefferhead_14, Feyre_13, FlagStaff_10, Frosty24_10, Fryberger_41, Ganymede_15, Gengar_13, Geraldini_15, GoldenAsh_10, Grizzly_10, Guey18_46, Guillsminger_13, Halo_10, Hammy_14, HedwigODU_15, Heftyboy_13, Homura_15, Hope_10, Hotshotbaby7_10, Hurricane_14, Hyperbowlee_15, Illumine_15, Inky_15, InvictusManeo_13, JAWS_15, Jarvi_15, Jayhawk_15, Jeckyll_15, Jolene_10, Jolie2_10, Jonghyun_10, JorRay_10, Joy99_15, Kareem_10, Kasen3_10, Keelan_39, Keshu_14, KiSi_14, Kratio_12, Larva_13, LaterM_15, LeMond_14, Leston_13, Liefie_10, LindNT_15, Llorens_15, Lunahalos_15, MOOREtheMARYer_10, MacnCheese_15, Maliketh_10, MarkPhew_15, Marmie_10, Marshawn_16, MeaningOfLife_15, Megsy_15, Miryou_13, Mowgli_10, Murucutumbu_15, Mynx_15, Nibb_14, OkiRoe_13, Olga_10, Oscar_14, Pace1224_10, Padfoot_15, Padpat_15, Paito_10, Paola_13, Peeb_10, Peel_15, Periodt_10, Pharb_14, Phish_10, Piatt_15, PinkYoshi_10, Pinnie_11, Pixie_14,

Plagueis_10, Pokerus_14, Prithvi_15, Psycho_13, QuincyRose_14, Ramen_15, Rapunzel97_15, Renaissance_10, Ronaldo_44, Rosmarinus_15, SamuelLPlaqsom_15, Scarlett_14, Schiebel_10, ShaboiShabazz_10, ShedlockHolmes_14, ShiaSurprise_15, SirPhilip_14, Sizemore_10, Slimphazie_15, Sneeze_10, SoSeph_13, Spock_15, Stinson_15, Sulley_15, Sweets_10, TBond007_14, Tachez_15, TaiwanKao_15, Thyatira_13, TiniBug_15, Tiri_15, TomBrady_10, Topper_15, TreyKay_15, TribbleTrouble_13, TruffulaTree_15, Twitch_15, Urkel_15, Veliki_15, Volt_43, Waterfoul_13, Wendigo_10, YoureAdopted_14, Zabiza_15, Zavala_15, Ziko_44, ZoMa_10,

Genes that have the "Most Annotated" start but do not call it:

- Anaya_16, Annihilator_10, Aroostook_10, CLED96_10, Cambiare_11, Darionha_10, Gideon_10, Gomashi_10, Jane_10, LouisV14_10, Lucky10_9, Morkie_9, OctaviousRex_10, PhorbPhlower_9, Phreak_10, Rabbs_10, Remy19_10, Taheera_10, Terror_10, Zombie_10,

Genes that do not have the "Most Annotated" start:

- Agatha_10, AikoCarson_9, Amelie_11, Amok_9, AndPeggy_9, Angelique_10, Antsirabe_10, Apricot_10, Asapag_10, Avani_10, Axym_10, Azira_12, BENtherdunthat_10, BearBQ_10, BeeGee_10, BigChungus_9, Binglebops_11, BillDoor_12, Birdsong_10, Biskit_11, Blarby_11, Boilgate_12, BoostSeason_11, Bradissa_10, BritBrat_10, Bryler_14, Budski_10, Burnsey_10, Button_11, Buttrmlkdreams_10, Cain_14, Carsonalex_11, Cashline_10, Chancellor_16, Che9d_10, CheeseTouch_10, Cheetobro_16, CherryonLim_11, Cleo_10, Confidence_10, Cozz_10, Crater_10, Curiosium_16, Dartin_15, Demsculpinboyz_10, DismalFunk_11, DismalStressor_11, Dre3_10, EMSquaredA_10, Ecliptus_10, Efra2_15, Elinal_11, Elliott_10, Emalyn_9, EnalisNailo_10, Enkosi_11, Eponine_16, FF47_12, Feastonyeet_9, Findley_11, Fionnbharth_16, Floral_10, Fribs8_11, Frickyeah_10, GTE2_08, Gaia_7, Getalong_10, GiKK_13, Gibbous_10, GoldHunter_11, Guanica15_15, Hexbug_12, HippoPololi_12, Holliday_10, Horseradish_11, Horus_10, JF1_16, Jabbawokkie_11, Jablanski_10, JacoRen57_9, Jamzy_13, Juliette_16, Kamaru_10, KayGee_10, Kenna_10, Kraw_16, Krueger_14, Kuwabara_10, LastHope_15, Lauer_9, Lemuria_10, Leroy_10, LilPharaoh_11, Lilas_10, LitninMcQueen_10, LonelyBoi_10, Lutum_10, MAnor_10, MScarn_12, MaVan_12, Maco6_10, Malisha_10, Malthus_16, Marcoliusprime_11, Margaret_13, Marteena_10, Mayweather_11, McMater_15, Mdavu_11, Mercurio_11, Milly_11, MissDaisy_16, Mitti_16, MortyNRick_10, Muddy_12, Mufasa_11, MunkgeeRoachy_10, Nebkiss_7, Nibbles_12, Nikao_11, Niklas_15, Nina_11, NoShow_10, Nodigi_12, Nutello_11, ODay_10, OmniCritical_16, Omnicron_13, Orla_12, P3MA_10, Patt_16, Peanam_15, Periwinkle_10, Phabuloso_10, PhelpsODU_14, Phistory_10, Phrank_14, Pollux_10, Pons_10, Posh_10, PotPie_10, PsychoKiller_10, Pytheas_10, Quasar_10, RanchParmCat_13, Rando14_13, RedBaron_11, Reptar3000_16, Richo_15, Ruthiejr_15, SamScheppers_14, SgtBeansprout_11, Shadow1_13, Shaobing_15, SheckWes_9, SketchMex_9, Slarp_16, Sleepyhead_9, Sopespian_10, Soul22_10, Spartoi_8, Spooky_10, Squiddly_11, Stargaze_10, SteamedHams_12, Strobilo_11, SummitAcademy_9, Sunflower1121_13, Survivors_12, SweatNTears_12, Syra333_14, TClif_14, TM4_11, TPA4_10, Taquito_14, Tierra_14, TingHuaYa_15, Tolls_12, Torres_11, Troje_10, Typhonomachy_11, Unicorn_14, Validus_15, Vine_11, Whitney_10, Wintermute_16, Wrigley_10, Ximenita_15, Y10_16, Y2_16, Yakult_11, Yarn_9, Yoshi_10, Yummy_11, Yuna_15, Yunkel11_15, Zapner_11, Zareef_14, ZoeJ_11,

Summary by start number:

Start 26:

- Found in 71 of 403 (17.6%) of genes in pham
- Manual Annotations of this start: 2 of 375
- Called 2.8% of time when present
- Phage (with cluster) where this start called: Taheera_10 (G1), Terror_10 (G1),

Start 39:

- Found in 1 of 403 (0.2%) of genes in pham
- No Manual Annotations of this start.
- Called 100.0% of time when present
- Phage (with cluster) where this start called: TPA4_10 (singleton),

Start 40:

- Found in 5 of 403 (1.2%) of genes in pham
- No Manual Annotations of this start.
- Called 20.0% of time when present
- Phage (with cluster) where this start called: Zareef_14 (CT),

Start 42:

- Found in 1 of 403 (0.2%) of genes in pham
- Manual Annotations of this start: 1 of 375
- Called 100.0% of time when present
- Phage (with cluster) where this start called: NoShow_10 (AB),

Start 44:

- Found in 2 of 403 (0.5%) of genes in pham
- Manual Annotations of this start: 2 of 375
- Called 100.0% of time when present
- Phage (with cluster) where this start called: Omnicron_13 (K5), Rando14_13 (K5),

Start 45:

- Found in 71 of 403 (17.6%) of genes in pham
- Manual Annotations of this start: 21 of 375
- Called 32.4% of time when present
- Phage (with cluster) where this start called: Annihilator_10 (G1), Antsirabe_10 (G5), Aroostook_10 (G1), CLED96_10 (G1), Cambiare_11 (G2), Darionha_10 (G1), FF47_12 (AB), Gideon_10 (G1), Gomashi_10 (G1), JacoRen57_9 (AB), Jane_10 (G1), Lemuria_10 (G4), LouisV14_10 (G1), Maco6_10 (AB), Mercurio_11 (G4), Muddy_12 (AB), OctaviousRex_10 (G1), P3MA_10 (singleton), Phreak_10 (G1), Rabbs_10 (G1), Remy19_10 (G1), Stargaze_10 (G5), Zombie_10 (G1),

Start 46:

- Found in 204 of 403 (50.6%) of genes in pham
- Manual Annotations of this start: 178 of 375
- Called 90.2% of time when present
- Phage (with cluster) where this start called: ActinUp_15 (K1), Adephegia_15 (K1), Adonis_15 (K1), Agent47_13 (K5), Ageofdapage_15 (K1), AlishaPH_15 (K1), AlleyCat_13 (K5), Amgine_13 (K6), Aminay_13 (K7), Amohnton_14 (K6), Angel_10 (G1), Angelica_15 (K1), Apocalypse_15 (K1), Asayake_15 (K1), Atiba_15 (K1), Avocado_10 (G2), Avrafan_10 (G1), AzulaCat_10 (G1), BEEST_15 (K1), BGlluviae_15 (K1), BPs_10 (G1), BQuat_10 (G1), BaghaKamala_15 (K1), Barkley26_10 (G1), BarrelRoll_15 (K1), Beezoo_15 (K1), Bella96_15 (K1),

Belladonna_15 (K1), Blizzard_15 (K1), Boiii_15 (K1), BruceB_10 (G1), CREW_15 (K1), Camri_10 (G1), Capricorn_15 (K1), CaseJules_15 (K1), CassieYates_10 (G1), Cedasite_10 (G1), Chance64_10 (G1), CheetoDust_15 (K1), Cherrybomb426_10 (G1), Chris_14 (K1), Coleslaw_10 (G1), Collard_13 (K5), Crespo_10 (G1), CrimD_15 (K1), DMoney_10 (G1), DNAll_0010 (G1), Dadosky_13 (K5), Dalmuri_15 (K1), DarthP_14 (K6), Deby_15 (K1), Devera_15 (K1), Dole_15 (K1), DrHayes_15 (K1), Durfee_15 (K1), ECartman_10 (G1), Edugator_12 (K5), Ekdilam_12 (K6), Ellie_12 (K6), Emerson_15 (K1), Fefferhead_14 (K6), Feyre_13 (K5), FlagStaff_10 (G2), Frosty24_10 (G1), Fryberger_41 (DP), Ganymede_15 (K1), Gengar_13 (K5), Geraldini_15 (K1), GoldenAsh_10 (G1), Grizzly_10 (G1), Guey18_46 (DP), Guillsminger_13 (K5), Halo_10 (G1), Hammy_14 (K6), HedwigODU_15 (K1), Heftyboy_13 (K5), Homura_15 (K1), Hope_10 (G1), Hotshotbaby7_10 (G1), Hurricane_14 (K3), Hyperbowlee_15 (K1), Illumine_15 (K1), Inky_15 (K1), InvictusManeo_13 (K5), JAWS_15 (K1), Jarvi_15 (K1), Jayhawk_15 (K1), Jeckyll_15 (K1), Jolene_10 (G1), Jolie2_10 (G4), Jonghyun_10 (G1), JorRay_10 (G1), Joy99_15 (K1), Kareem_10 (G1), Kasen3_10 (G1), Keelan_39 (DP), Keshu_14 (K3), KiSi_14 (K1), Kratio_12 (K5), Larva_13 (K5), LaterM_15 (K1), LeMond_14 (K1), Leston_13 (K5), Liefie_10 (G1), LindNT_15 (K1), Llorens_15 (K1), Lunahalos_15 (K1), MOOREtheMARYer_10 (G3), MacnCheese_15 (K3), Maliketh_10 (G1), MarkPhew_15 (K1), Marmie_10 (G1), Marshawn_16 (K6), MeaningOfLife_15 (K1), Megsy_15 (K1), Miryou_13 (K5), Mowgli_10 (G1), Murucutumbu_15 (K1), Mynx_15 (K1), Nibb_14 (K1), OkiRoe_13 (K5), Olga_10 (G1), Oscar_14 (K1), Pace1224_10 (G2), Padfoot_15 (K1), Padpat_15 (K1), Paito_10 (G1), Paola_13 (K5), Peeb_10 (G1), Peel_15 (K1), Periodt_10 (G1), Pharb_14 (K3), Phish_10 (G1), Piatt_15 (K1), PinkYoshi_10 (G1), Pinnie_11 (G3), Pixie_14 (K3), Plagueis_10 (G1), Pokerus_14 (K1), Prithvi_15 (K1), Psycho_13 (K5), QuincyRose_14 (K1), Ramen_15 (K1), Rapunzel97_15 (K1), Renaissance_10 (G1), Ronaldo_44 (DP), Rosmarinus_15 (K1), SamuelLPlaqson_15 (K1), Scarlett_14 (K1), Schiebel_10 (G1), ShaboiShabazz_10 (G1), ShedlockHolmes_14 (K3), ShiaSurprise_15 (K1), SirPhilip_14 (K6), Sizemore_10 (G1), Slimphazie_15 (K1), Sneeze_10 (G1), SoSeph_13 (K5), Spock_15 (K1), Stinson_15 (K1), Sulley_15 (K1), Sweets_10 (G1), TBond007_14 (K3), Tachez_15 (K1), TaiwanKao_15 (K1), Thyatira_13 (K5), TiniBug_15 (K1), Tiri_15 (K1), TomBrady_10 (G1), Topper_15 (K1), TreyKay_15 (K1), TribbleTrouble_13 (K3), TruffulaTree_15 (K1), Twitch_15 (K1), Urkel_15 (K1), Veliki_15 (K1), Volt_43 (DP), Waterfoul_13 (K5), Wendigo_10 (G1), YoureAdopted_14 (K1), Zabiza_15 (K1), Zavala_15 (K1), Ziko_44 (DP), ZoMa_10 (G1),

Start 47:

- Found in 22 of 403 (5.5%) of genes in pham
- Manual Annotations of this start: 17 of 375
- Called 100.0% of time when present
- Phage (with cluster) where this start called: Amelie_11 (K1), Biglebops_11 (K1), Curiosium_16 (K1), Dartin_15 (K1), Efra2_15 (K1), Enkosi_11 (K1), Guanica15_15 (K1), LastHope_15 (K1), LilPharaoh_11 (K1), McMater_15 (K1), Mdavu_11 (K1), Nikao_11 (K1), Niklas_15 (K1), Nutello_11 (K1), Peanam_15 (K1), Richo_15 (K1), SgtBeansprout_11 (K1), Shaobing_15 (K1), TingHuaYa_15 (K1), Torres_11 (K1), Validus_15 (K1), Yunkel11_15 (K1),

Start 48:

- Found in 44 of 403 (10.9%) of genes in pham
- Manual Annotations of this start: 43 of 375
- Called 100.0% of time when present

- Phage (with cluster) where this start called: Anaya_16 (K1), BoostSeason_11 (K2), Bryler_14 (K6), Cain_14 (K6), Chancellor_16 (K4), Cheetobro_16 (K4), DismalFunk_11 (K2), DismalStressor_11 (K2), Eponine_16 (K4), Findley_11 (K2), Fionnbharth_16 (K4), JF1_16 (K4), Juliette_16 (K4), Kraw_16 (K4), Krueger_14 (K6), Malthus_16 (K4), Marcoliusprime_11 (K2), Milly_11 (K2), MissDaisy_16 (K4), Mitti_16 (K4), Mufasa_11 (K2), OmniCritical_16 (K4), Patt_16 (K4), PhelpsODU_14 (K6), Phrank_14 (K6), Reptar3000_16 (K4), Ruthiejr_15 (K4), SamScheppers_14 (K4), Shadow1_13 (K6), Slarp_16 (K4), Strobilo_11 (K2), Sunflower1121_13 (K6), Syra333_14 (K6), TClif_14 (K6), TM4_11 (K2), Taquito_14 (K4), Tierra_14 (K6), Unicorn_14 (K6), Wintermute_16 (K4), Ximenita_15 (K6), Y10_16 (K4), Y2_16 (K4), Yuna_15 (K6), ZoeJ_11 (K2),

Start 49:

- Found in 1 of 403 (0.2%) of genes in pham
- Manual Annotations of this start: 1 of 375
- Called 100.0% of time when present
- Phage (with cluster) where this start called: Sleepyhead_9 (singleton),

Start 50:

- Found in 20 of 403 (5.0%) of genes in pham
- Manual Annotations of this start: 19 of 375
- Called 100.0% of time when present
- Phage (with cluster) where this start called: Asapag_10 (DN1), BENtherdunthat_10 (DN1), Budski_10 (DN), CheeseTouch_10 (DN1), Frickyeah_10 (DN1), Getalong_10 (DN1), Holliday_10 (DN1), Horus_10 (DN1), Kamaru_10 (DN1), Kenna_10 (DN1), Leroy_10 (DN1), LitninMcQueen_10 (DN1), Lutum_10 (DN1), Malisha_10 (DN), Periwinkle_10 (DN1), Phabuloso_10 (DN1), Phistory_10 (DN1), Spooky_10 (DN2), Squiddly_11 (DN2), Whitney_10 (DN1),

Start 51:

- Found in 2 of 403 (0.5%) of genes in pham
- Manual Annotations of this start: 2 of 375
- Called 100.0% of time when present
- Phage (with cluster) where this start called: Ecliptus_10 (DN), ODay_10 (DN),

Start 52:

- Found in 99 of 403 (24.6%) of genes in pham
- Manual Annotations of this start: 87 of 375
- Called 98.0% of time when present
- Phage (with cluster) where this start called: Agatha_10 (CT), AikoCarson_9 (CT), Amok_9 (CT), AndPeggy_9 (CT), Angelique_10 (CY1), Apricot_10 (DN3), Avani_10 (F2), Axym_10 (CT), Azira_12 (CT), BearBQ_10 (DN), BeeGee_10 (CY), BigChungus_9 (CT), BillDoor_12 (CT), Birdsong_10 (DN), Biskit_11 (CT), Blarby_11 (F), Bradissa_10 (CY1), BritBrat_10 (CY2), Burnsey_10 (CT), Button_11 (CT), Buttrmlkdreams_10 (CT), Cashline_10 (CY), Che9d_10 (F2), CherryonLim_11 (CT), Cleo_10 (CT), Confidence_10 (CY1), Cozz_10 (CT), Crater_10 (DN3), Demsculpinboyz_10 (F2), Dre3_10 (CT), EMSquaredA_10 (CY1), Elinal_11 (CT), Elliott_10 (CT), Emalyn_9 (CT), EnalisNailo_10 (CY1), Feastonyeet_9 (CT), Floral_10 (CY1), Fribs8_11 (CT), GTE2_08 (CT), Gaia_7 (X), GiKK_13 (CT), Gibbous_10 (CT), GoldHunter_11 (CT), Hexbug_12 (CT), HippoPololi_12 (CT), Horseradish_11 (CT), Jabbawokkie_11 (F2), Jablanski_10 (CY), Jamzy_13 (CT), KayGee_10 (CT), Kuwabara_10 (DN4), Lauer_9 (CT), Lilas_10 (CY1), LonelyBoi_10 (CY), Lucky10_9 (DH), MAnor_10 (CT), MScarn_12 (CT), MaVan_12 (CT), Margaret_13 (CT),

Marteena_10 (CY1), Mayweather_11 (CT), Morkie_9 (DH), MortyNRick_10 (DN), MunkgeeRoachy_10 (CT), Nebkiss_7 (X), Nibbles_12 (CT), Nina_11 (CT), Nodigi_12 (CT), Orla_12 (CT), PhorbesPhlower_9 (DH), Pollux_10 (CY1), Pons_10 (CT), Posh_10 (CY), PotPie_10 (CT), PsychoKiller_10 (CT), Pytheas_10 (CY), Quasar_10 (CT), RanchParmCat_13 (CT), RedBaron_11 (CT), SheckWes_9 (CT), SketchMex_9 (CT), Sopespian_10 (CT), Soul22_10 (F2), SteamedHams_12 (CT), SummitAcademy_9 (CT), Survivors_12 (CT), SweatNTears_12 (CT), Tolls_12 (CT), Troje_10 (CT), Typhonmarchy_11 (CT), Vine_11 (CT), Wrigley_10 (CY), Yakult_11 (CT), Yarn_9 (CT), Yoshi_10 (F2), Yummy_11 (CT), Zapner_11 (F2),

Start 53:

- Found in 2 of 403 (0.5%) of genes in pham
- Manual Annotations of this start: 1 of 375
- Called 50.0% of time when present
- Phage (with cluster) where this start called: Boilgate_12 (K8),

Start 54:

- Found in 1 of 403 (0.2%) of genes in pham
- Manual Annotations of this start: 1 of 375
- Called 100.0% of time when present
- Phage (with cluster) where this start called: Spartoi_8 (singleton),

Start 56:

- Found in 14 of 403 (3.5%) of genes in pham
- No Manual Annotations of this start.
- Called 7.1% of time when present
- Phage (with cluster) where this start called: Carsonalex_11 (CT),

Summary by clusters:

There are 29 clusters represented in this pham: DN, singleton, DH, K3, K2, K1, K7, K6, K5, K4, K8, DP, G5, G4, G3, G2, G1, DN4, DN1, DN3, DN2, CY2, CY1, AB, F, CY, X, CT, F2,

Info for manual annotations of cluster AB:

- Start number 42 was manually annotated 1 time for cluster AB.
- Start number 45 was manually annotated 3 times for cluster AB.

Info for manual annotations of cluster CT:

- Start number 52 was manually annotated 53 times for cluster CT.

Info for manual annotations of cluster CY:

- Start number 52 was manually annotated 7 times for cluster CY.

Info for manual annotations of cluster CY1:

- Start number 52 was manually annotated 9 times for cluster CY1.

Info for manual annotations of cluster CY2:

- Start number 52 was manually annotated 1 time for cluster CY2.

Info for manual annotations of cluster DH:

- Start number 52 was manually annotated 3 times for cluster DH.

Info for manual annotations of cluster DN:

- Start number 50 was manually annotated 2 times for cluster DN.
- Start number 51 was manually annotated 2 times for cluster DN.
- Start number 52 was manually annotated 2 times for cluster DN.

Info for manual annotations of cluster DN1:

- Start number 50 was manually annotated 15 times for cluster DN1.

Info for manual annotations of cluster DN2:

- Start number 50 was manually annotated 2 times for cluster DN2.

Info for manual annotations of cluster DN3:

- Start number 52 was manually annotated 2 times for cluster DN3.

Info for manual annotations of cluster DN4:

- Start number 52 was manually annotated 1 time for cluster DN4.

Info for manual annotations of cluster DP:

- Start number 46 was manually annotated 6 times for cluster DP.

Info for manual annotations of cluster F2:

- Start number 52 was manually annotated 7 times for cluster F2.

Info for manual annotations of cluster G1:

- Start number 26 was manually annotated 2 times for cluster G1.
- Start number 45 was manually annotated 13 times for cluster G1.
- Start number 46 was manually annotated 45 times for cluster G1.

Info for manual annotations of cluster G2:

- Start number 45 was manually annotated 1 time for cluster G2.
- Start number 46 was manually annotated 2 times for cluster G2.

Info for manual annotations of cluster G3:

- Start number 46 was manually annotated 2 times for cluster G3.

Info for manual annotations of cluster G4:

- Start number 45 was manually annotated 2 times for cluster G4.

Info for manual annotations of cluster G5:

- Start number 45 was manually annotated 1 time for cluster G5.

Info for manual annotations of cluster K1:

- Start number 46 was manually annotated 85 times for cluster K1.
- Start number 47 was manually annotated 17 times for cluster K1.
- Start number 48 was manually annotated 1 time for cluster K1.

Info for manual annotations of cluster K2:

- Start number 48 was manually annotated 10 times for cluster K2.

Info for manual annotations of cluster K3:

- Start number 46 was manually annotated 8 times for cluster K3.

Info for manual annotations of cluster K4:

- Start number 48 was manually annotated 19 times for cluster K4.

Info for manual annotations of cluster K5:

- Start number 44 was manually annotated 2 times for cluster K5.
- Start number 46 was manually annotated 20 times for cluster K5.

Info for manual annotations of cluster K6:

- Start number 46 was manually annotated 9 times for cluster K6.
- Start number 48 was manually annotated 13 times for cluster K6.

Info for manual annotations of cluster K7:

- Start number 46 was manually annotated 1 time for cluster K7.

Info for manual annotations of cluster K8:

- Start number 53 was manually annotated 1 time for cluster K8.

Info for manual annotations of cluster X:

- Start number 52 was manually annotated 2 times for cluster X.

Gene Information:

Gene: ActinUp_15 Start: 9364, Stop: 9720, Start Num: 46

Candidate Starts for ActinUp_15:

(Start: 46 @9364 has 178 MA's), (59, 9388), (75, 9466), (77, 9469), (80, 9478), (100, 9547), (119, 9616), (128, 9676), (132, 9691),

Gene: Adephagia_15 Start: 9364, Stop: 9720, Start Num: 46

Candidate Starts for Adephagia_15:

(Start: 46 @9364 has 178 MA's), (59, 9388), (75, 9466), (77, 9469), (80, 9478), (100, 9547), (119, 9616), (128, 9676), (132, 9691),

Gene: Adonis_15 Start: 9373, Stop: 9729, Start Num: 46

Candidate Starts for Adonis_15:

(Start: 46 @9373 has 178 MA's), (59, 9397), (77, 9478), (80, 9487), (100, 9556), (119, 9625), (128, 9685), (132, 9700),

Gene: Agatha_10 Start: 6923, Stop: 7264, Start Num: 52

Candidate Starts for Agatha_10:

(Start: 52 @6923 has 87 MA's), (56, 6932), (70, 6992), (95, 7085), (121, 7187),

Gene: Agent47_13 Start: 9561, Stop: 9923, Start Num: 46

Candidate Starts for Agent47_13:

(Start: 46 @9561 has 178 MA's), (59, 9582), (66, 9606), (77, 9663), (100, 9741), (110, 9777), (119, 9810), (128, 9870), (132, 9885),

Gene: Ageofdapage_15 Start: 9294, Stop: 9650, Start Num: 46

Candidate Starts for Ageofdapage_15:

(Start: 46 @9294 has 178 MA's), (59, 9318), (77, 9399), (87, 9441), (100, 9477), (119, 9546), (128, 9606),

Gene: AikoCarson_9 Start: 6653, Stop: 6994, Start Num: 52
Candidate Starts for AikoCarson_9:
(Start: 52 @6653 has 87 MA's), (96, 6818), (121, 6917), (129, 6974),

Gene: AlishaPH_15 Start: 9363, Stop: 9719, Start Num: 46
Candidate Starts for AlishaPH_15:
(Start: 46 @9363 has 178 MA's), (59, 9387), (77, 9468), (80, 9477), (100, 9546), (119, 9615), (128, 9675), (132, 9690),

Gene: AlleyCat_13 Start: 9439, Stop: 9801, Start Num: 46
Candidate Starts for AlleyCat_13:
(Start: 46 @9439 has 178 MA's), (66, 9484), (77, 9541), (85, 9577), (87, 9583), (93, 9601), (100, 9619), (119, 9688), (128, 9748), (132, 9763),

Gene: Amelie_11 Start: 8651, Stop: 9004, Start Num: 47
Candidate Starts for Amelie_11:
(Start: 47 @8651 has 17 MA's), (59, 8672), (80, 8762), (93, 8813), (96, 8819), (100, 8831), (117, 8891), (119, 8900), (128, 8960), (132, 8975), (133, 8978),

Gene: Amgine_13 Start: 8999, Stop: 9385, Start Num: 46
Candidate Starts for Amgine_13:
(Start: 46 @8999 has 178 MA's), (64, 9038), (77, 9101), (100, 9179), (119, 9248), (133, 9326),

Gene: Aminay_13 Start: 9263, Stop: 9607, Start Num: 46
Candidate Starts for Aminay_13:
(Start: 46 @9263 has 178 MA's), (77, 9365), (103, 9449), (119, 9512), (129, 9578),

Gene: Amohnition_14 Start: 9299, Stop: 9697, Start Num: 46
Candidate Starts for Amohnition_14:
(Start: 46 @9299 has 178 MA's), (64, 9338), (100, 9479), (119, 9548), (128, 9608), (132, 9623), (133, 9626),

Gene: Amok_9 Start: 6653, Stop: 6994, Start Num: 52
Candidate Starts for Amok_9:
(Start: 52 @6653 has 87 MA's), (96, 6818), (121, 6917), (129, 6974),

Gene: Anaya_16 Start: 9368, Stop: 9721, Start Num: 48
Candidate Starts for Anaya_16:
(29, 9323), (Start: 46 @9365 has 178 MA's), (Start: 48 @9368 has 43 MA's), (59, 9389), (77, 9470), (100, 9548), (119, 9617), (128, 9677), (132, 9692),

Gene: AndPeggy_9 Start: 6941, Stop: 7282, Start Num: 52
Candidate Starts for AndPeggy_9:
(Start: 52 @6941 has 87 MA's), (96, 7106), (128, 7256), (129, 7262),

Gene: Angel_10 Start: 8811, Stop: 9167, Start Num: 46
Candidate Starts for Angel_10:
(25, 8745), (Start: 26 @8751 has 2 MA's), (43, 8802), (Start: 45 @8808 has 21 MA's), (Start: 46 @8811 has 178 MA's), (59, 8841), (99, 9000), (100, 9003), (122, 9084), (129, 9138),

Gene: Angelica_15 Start: 9335, Stop: 9691, Start Num: 46
Candidate Starts for Angelica_15:

(Start: 46 @9335 has 178 MA's), (59, 9359), (77, 9440), (80, 9449), (100, 9518), (119, 9587), (128, 9647), (132, 9662),

Gene: Angelique_10 Start: 7476, Stop: 7823, Start Num: 52

Candidate Starts for Angelique_10:

(27, 7398), (Start: 52 @7476 has 87 MA's), (73, 7572), (75, 7584), (101, 7668), (117, 7731), (129, 7803),

Gene: Annihilator_10 Start: 8808, Stop: 9167, Start Num: 45

Candidate Starts for Annihilator_10:

(25, 8745), (Start: 26 @8751 has 2 MA's), (43, 8802), (Start: 45 @8808 has 21 MA's), (Start: 46 @8811 has 178 MA's), (59, 8841), (99, 9000), (100, 9003), (122, 9084), (129, 9138),

Gene: Antsirabe_10 Start: 9102, Stop: 9464, Start Num: 45

Candidate Starts for Antsirabe_10:

(10, 8934), (25, 9039), (Start: 45 @9102 has 21 MA's), (69, 9183), (95, 9282), (100, 9297), (110, 9333), (127, 9423), (132, 9441),

Gene: Apocalypse_15 Start: 9339, Stop: 9695, Start Num: 46

Candidate Starts for Apocalypse_15:

(Start: 46 @9339 has 178 MA's), (59, 9363), (75, 9441), (77, 9444), (80, 9453), (100, 9522), (119, 9591), (128, 9651), (132, 9666),

Gene: Apricot_10 Start: 6791, Stop: 7132, Start Num: 52

Candidate Starts for Apricot_10:

(28, 6716), (38, 6758), (Start: 52 @6791 has 87 MA's), (59, 6812), (67, 6842), (95, 6956), (96, 6959), (98, 6965), (102, 6977), (118, 7043), (129, 7112), (131, 7118), (132, 7121),

Gene: Aroostook_10 Start: 8808, Stop: 9167, Start Num: 45

Candidate Starts for Aroostook_10:

(25, 8745), (Start: 26 @8751 has 2 MA's), (43, 8802), (Start: 45 @8808 has 21 MA's), (Start: 46 @8811 has 178 MA's), (59, 8841), (99, 9000), (100, 9003), (122, 9084), (129, 9138),

Gene: Asapag_10 Start: 6480, Stop: 6827, Start Num: 50

Candidate Starts for Asapag_10:

(36, 6444), (Start: 50 @6480 has 19 MA's), (62, 6519), (70, 6561), (90, 6633), (95, 6654), (96, 6657), (106, 6690), (112, 6717), (117, 6735), (126, 6786), (128, 6801), (129, 6807), (132, 6816),

Gene: Asayake_15 Start: 9404, Stop: 9760, Start Num: 46

Candidate Starts for Asayake_15:

(Start: 46 @9404 has 178 MA's), (59, 9428), (77, 9509), (100, 9587), (111, 9626), (119, 9656), (128, 9716), (132, 9731),

Gene: Atiba_15 Start: 9327, Stop: 9683, Start Num: 46

Candidate Starts for Atiba_15:

(Start: 46 @9327 has 178 MA's), (59, 9351), (77, 9432), (80, 9441), (100, 9510), (119, 9579), (128, 9639), (132, 9654),

Gene: Avani_10 Start: 6438, Stop: 6791, Start Num: 52

Candidate Starts for Avani_10:

(34, 6387), (35, 6393), (Start: 52 @6438 has 87 MA's), (61, 6468), (71, 6519), (96, 6624), (102, 6642), (109, 6675), (128, 6765),

Gene: Avocado_10 Start: 8948, Stop: 9304, Start Num: 46

Candidate Starts for Avocado_10:

(1, 8579), (10, 8780), (Start: 26 @8888 has 2 MA's), (35, 8921), (Start: 45 @8945 has 21 MA's), (Start: 46 @8948 has 178 MA's), (69, 9026), (100, 9140), (119, 9209), (127, 9266),

Gene: Avrafan_10 Start: 8811, Stop: 9167, Start Num: 46

Candidate Starts for Avrafan_10:

(25, 8745), (Start: 26 @8751 has 2 MA's), (43, 8802), (Start: 45 @8808 has 21 MA's), (Start: 46 @8811 has 178 MA's), (59, 8841), (99, 9000), (100, 9003), (122, 9084), (129, 9138),

Gene: Axym_10 Start: 6923, Stop: 7264, Start Num: 52

Candidate Starts for Axym_10:

(Start: 52 @6923 has 87 MA's), (56, 6932), (70, 6992), (95, 7085), (121, 7187),

Gene: Azira_12 Start: 7820, Stop: 8170, Start Num: 52

Candidate Starts for Azira_12:

(30, 7760), (40, 7796), (Start: 52 @7820 has 87 MA's), (59, 7838), (66, 7862), (70, 7889), (95, 7985), (100, 8000), (107, 8030), (119, 8084), (127, 8141),

Gene: AzulaCat_10 Start: 8811, Stop: 9167, Start Num: 46

Candidate Starts for AzulaCat_10:

(25, 8745), (Start: 26 @8751 has 2 MA's), (43, 8802), (Start: 45 @8808 has 21 MA's), (Start: 46 @8811 has 178 MA's), (59, 8841), (99, 9000), (100, 9003), (122, 9084), (129, 9138),

Gene: BEEST_15 Start: 9404, Stop: 9760, Start Num: 46

Candidate Starts for BEEST_15:

(Start: 46 @9404 has 178 MA's), (59, 9428), (77, 9509), (100, 9587), (111, 9626), (119, 9656), (128, 9716), (132, 9731),

Gene: BENtherdunthat_10 Start: 6480, Stop: 6827, Start Num: 50

Candidate Starts for BENtherdunthat_10:

(36, 6444), (Start: 50 @6480 has 19 MA's), (62, 6519), (70, 6561), (90, 6633), (95, 6654), (96, 6657), (106, 6690), (112, 6717), (117, 6735), (126, 6786), (128, 6801), (129, 6807), (132, 6816),

Gene: BGlluviae_15 Start: 9404, Stop: 9760, Start Num: 46

Candidate Starts for BGlluviae_15:

(Start: 46 @9404 has 178 MA's), (59, 9428), (77, 9509), (100, 9587), (111, 9626), (119, 9656), (128, 9716), (132, 9731),

Gene: BPs_10 Start: 8811, Stop: 9167, Start Num: 46

Candidate Starts for BPs_10:

(25, 8745), (Start: 26 @8751 has 2 MA's), (43, 8802), (Start: 45 @8808 has 21 MA's), (Start: 46 @8811 has 178 MA's), (59, 8841), (99, 9000), (100, 9003), (122, 9084), (129, 9138),

Gene: BQuat_10 Start: 8811, Stop: 9167, Start Num: 46

Candidate Starts for BQuat_10:

(25, 8745), (Start: 26 @8751 has 2 MA's), (43, 8802), (Start: 45 @8808 has 21 MA's), (Start: 46 @8811 has 178 MA's), (59, 8841), (99, 9000), (100, 9003), (122, 9084), (129, 9138),

Gene: BaghaKamala_15 Start: 9330, Stop: 9686, Start Num: 46

Candidate Starts for BaghaKamala_15:

(Start: 46 @9330 has 178 MA's), (59, 9354), (75, 9432), (77, 9435), (80, 9444), (100, 9513), (119, 9582), (128, 9642), (132, 9657),

Gene: Barkley26_10 Start: 8811, Stop: 9167, Start Num: 46

Candidate Starts for Barkley26_10:

(25, 8745), (Start: 26 @8751 has 2 MA's), (43, 8802), (Start: 45 @8808 has 21 MA's), (Start: 46 @8811 has 178 MA's), (59, 8841), (99, 9000), (100, 9003), (122, 9084), (129, 9138),

Gene: BarrelRoll_15 Start: 9356, Stop: 9712, Start Num: 46

Candidate Starts for BarrelRoll_15:

(Start: 46 @9356 has 178 MA's), (59, 9380), (77, 9461), (100, 9539), (111, 9578), (119, 9608), (128, 9668), (132, 9683),

Gene: BearBQ_10 Start: 6791, Stop: 7132, Start Num: 52

Candidate Starts for BearBQ_10:

(28, 6716), (38, 6758), (Start: 52 @6791 has 87 MA's), (59, 6812), (67, 6842), (95, 6956), (96, 6959), (98, 6965), (102, 6977), (118, 7043), (129, 7112), (131, 7118), (132, 7121),

Gene: BeeGee_10 Start: 7478, Stop: 7825, Start Num: 52

Candidate Starts for BeeGee_10:

(27, 7400), (Start: 52 @7478 has 87 MA's), (75, 7586), (117, 7733), (129, 7805),

Gene: Beezoo_15 Start: 9384, Stop: 9740, Start Num: 46

Candidate Starts for Beezoo_15:

(Start: 46 @9384 has 178 MA's), (59, 9408), (75, 9486), (77, 9489), (80, 9498), (100, 9567), (119, 9636), (128, 9696), (132, 9711),

Gene: Bella96_15 Start: 9285, Stop: 9641, Start Num: 46

Candidate Starts for Bella96_15:

(Start: 46 @9285 has 178 MA's), (59, 9309), (77, 9390), (100, 9468), (119, 9537), (128, 9597), (132, 9612),

Gene: Belladonna_15 Start: 9404, Stop: 9760, Start Num: 46

Candidate Starts for Belladonna_15:

(Start: 46 @9404 has 178 MA's), (59, 9428), (77, 9509), (100, 9587), (111, 9626), (119, 9656), (128, 9716), (132, 9731),

Gene: BigChungus_9 Start: 6720, Stop: 7061, Start Num: 52

Candidate Starts for BigChungus_9:

(Start: 52 @6720 has 87 MA's), (64, 6756), (65, 6759), (93, 6879), (99, 6894), (129, 7041),

Gene: Biglebops_11 Start: 8651, Stop: 9004, Start Num: 47

Candidate Starts for Biglebops_11:

(Start: 47 @8651 has 17 MA's), (59, 8672), (80, 8762), (93, 8813), (96, 8819), (100, 8831), (117, 8891), (119, 8900), (128, 8960), (132, 8975), (133, 8978),

Gene: BillDoor_12 Start: 6906, Stop: 7247, Start Num: 52

Candidate Starts for BillDoor_12:

(Start: 52 @6906 has 87 MA's), (96, 7071), (128, 7221), (129, 7227),

Gene: Birdsong_10 Start: 6791, Stop: 7132, Start Num: 52

Candidate Starts for Birdsong_10:

(28, 6716), (38, 6758), (Start: 52 @6791 has 87 MA's), (59, 6812), (67, 6842), (95, 6956), (96, 6959), (98, 6965), (102, 6977), (118, 7043), (129, 7112), (131, 7118), (132, 7121),

Gene: Biskit_11 Start: 6907, Stop: 7248, Start Num: 52
Candidate Starts for Biskit_11:
(Start: 52 @6907 has 87 MA's), (84, 7030), (121, 7171), (128, 7222), (129, 7228),

Gene: Blarby_11 Start: 6962, Stop: 7315, Start Num: 52
Candidate Starts for Blarby_11:
(34, 6911), (35, 6917), (Start: 52 @6962 has 87 MA's), (61, 6992), (71, 7043), (96, 7148), (102, 7166),
(109, 7199), (128, 7289),

Gene: Blizzard_15 Start: 9404, Stop: 9760, Start Num: 46
Candidate Starts for Blizzard_15:
(Start: 46 @9404 has 178 MA's), (59, 9428), (77, 9509), (100, 9587), (111, 9626), (119, 9656), (128, 9716), (132, 9731),

Gene: Boiiii_15 Start: 9406, Stop: 9762, Start Num: 46
Candidate Starts for Boiiii_15:
(Start: 46 @9406 has 178 MA's), (59, 9430), (77, 9511), (100, 9589), (111, 9628), (119, 9658), (128, 9718), (132, 9733),

Gene: Boilgate_12 Start: 9365, Stop: 9724, Start Num: 53
Candidate Starts for Boilgate_12:
(Start: 53 @9365 has 1 MA's), (55, 9374), (68, 9425), (77, 9473), (110, 9596), (123, 9650), (129, 9695),

Gene: BoostSeason_11 Start: 7354, Stop: 7704, Start Num: 48
Candidate Starts for BoostSeason_11:
(Start: 48 @7354 has 43 MA's), (60, 7378), (64, 7393), (68, 7414), (77, 7456), (80, 7465), (83, 7477),
(100, 7534), (101, 7537), (119, 7603), (128, 7663), (129, 7669), (132, 7678),

Gene: Bradissa_10 Start: 7482, Stop: 7829, Start Num: 52
Candidate Starts for Bradissa_10:
(Start: 52 @7482 has 87 MA's), (75, 7590), (117, 7737), (129, 7809),

Gene: BritBrat_10 Start: 7484, Stop: 7831, Start Num: 52
Candidate Starts for BritBrat_10:
(Start: 52 @7484 has 87 MA's), (75, 7592), (117, 7739), (129, 7811),

Gene: BruceB_10 Start: 8811, Stop: 9167, Start Num: 46
Candidate Starts for BruceB_10:
(25, 8745), (Start: 26 @8751 has 2 MA's), (43, 8802), (Start: 45 @8808 has 21 MA's), (Start: 46 @8811 has 178 MA's), (59, 8841), (99, 9000), (100, 9003), (122, 9084), (129, 9138),

Gene: Bryler_14 Start: 8315, Stop: 8668, Start Num: 48
Candidate Starts for Bryler_14:
(Start: 48 @8315 has 43 MA's), (85, 8453), (93, 8477), (100, 8495), (119, 8564), (128, 8624), (132, 8639),

Gene: Budski_10 Start: 6485, Stop: 6832, Start Num: 50
Candidate Starts for Budski_10:
(36, 6449), (Start: 50 @6485 has 19 MA's), (62, 6524), (95, 6659), (96, 6662), (106, 6695), (117, 6740), (126, 6791), (128, 6806), (132, 6821),

Gene: Burnsey_10 Start: 6924, Stop: 7265, Start Num: 52

Candidate Starts for Burnsey_10:

(Start: 52 @6924 has 87 MA's), (56, 6933), (70, 6993), (95, 7086), (121, 7188),

Gene: Button_11 Start: 6943, Stop: 7281, Start Num: 52

Candidate Starts for Button_11:

(24, 6853), (25, 6856), (Start: 26 @6862 has 2 MA's), (Start: 52 @6943 has 87 MA's), (101, 7123), (104, 7138), (110, 7162), (112, 7168), (129, 7261),

Gene: Buttrmlkdreams_10 Start: 6901, Stop: 7242, Start Num: 52

Candidate Starts for Buttrmlkdreams_10:

(Start: 52 @6901 has 87 MA's), (84, 7024), (121, 7165), (128, 7216), (129, 7222),

Gene: CLED96_10 Start: 8808, Stop: 9167, Start Num: 45

Candidate Starts for CLED96_10:

(25, 8745), (Start: 26 @8751 has 2 MA's), (43, 8802), (Start: 45 @8808 has 21 MA's), (Start: 46 @8811 has 178 MA's), (59, 8841), (99, 9000), (100, 9003), (122, 9084), (129, 9138),

Gene: CREW_15 Start: 9404, Stop: 9760, Start Num: 46

Candidate Starts for CREW_15:

(Start: 46 @9404 has 178 MA's), (59, 9428), (77, 9509), (100, 9587), (111, 9626), (119, 9656), (128, 9716), (132, 9731),

Gene: Cain_14 Start: 8303, Stop: 8656, Start Num: 48

Candidate Starts for Cain_14:

(Start: 48 @8303 has 43 MA's), (85, 8441), (93, 8465), (100, 8483), (119, 8552), (128, 8612), (132, 8627),

Gene: Cambiare_11 Start: 9407, Stop: 9766, Start Num: 45

Candidate Starts for Cambiare_11:

(1, 9041), (10, 9242), (Start: 26 @9350 has 2 MA's), (35, 9383), (Start: 45 @9407 has 21 MA's), (Start: 46 @9410 has 178 MA's), (69, 9488), (100, 9602), (119, 9671), (127, 9728),

Gene: Camri_10 Start: 8811, Stop: 9167, Start Num: 46

Candidate Starts for Camri_10:

(25, 8745), (Start: 26 @8751 has 2 MA's), (43, 8802), (Start: 45 @8808 has 21 MA's), (Start: 46 @8811 has 178 MA's), (59, 8841), (99, 9000), (100, 9003), (122, 9084), (129, 9138),

Gene: Capricorn_15 Start: 9404, Stop: 9760, Start Num: 46

Candidate Starts for Capricorn_15:

(Start: 46 @9404 has 178 MA's), (59, 9428), (77, 9509), (100, 9587), (111, 9626), (119, 9656), (128, 9716), (132, 9731),

Gene: Carsonalex_11 Start: 6989, Stop: 7321, Start Num: 56

Candidate Starts for Carsonalex_11:

(Start: 52 @6980 has 87 MA's), (56, 6989), (70, 7049), (95, 7142), (121, 7244),

Gene: CaseJules_15 Start: 9404, Stop: 9760, Start Num: 46

Candidate Starts for CaseJules_15:

(Start: 46 @9404 has 178 MA's), (59, 9428), (77, 9509), (100, 9587), (111, 9626), (119, 9656), (128, 9716), (132, 9731),

Gene: Cashline_10 Start: 7331, Stop: 7678, Start Num: 52

Candidate Starts for Cashline_10:

(27, 7253), (Start: 52 @7331 has 87 MA's), (73, 7427), (75, 7439), (101, 7523), (129, 7658),

Gene: CassieYates_10 Start: 8811, Stop: 9167, Start Num: 46

Candidate Starts for CassieYates_10:

(25, 8745), (Start: 26 @8751 has 2 MA's), (43, 8802), (Start: 45 @8808 has 21 MA's), (Start: 46 @8811 has 178 MA's), (59, 8841), (99, 9000), (100, 9003), (122, 9084), (129, 9138),

Gene: Cedasite_10 Start: 8811, Stop: 9167, Start Num: 46

Candidate Starts for Cedasite_10:

(25, 8745), (Start: 26 @8751 has 2 MA's), (43, 8802), (Start: 45 @8808 has 21 MA's), (Start: 46 @8811 has 178 MA's), (59, 8841), (99, 9000), (100, 9003), (122, 9084), (129, 9138),

Gene: Chance64_10 Start: 8811, Stop: 9167, Start Num: 46

Candidate Starts for Chance64_10:

(25, 8745), (Start: 26 @8751 has 2 MA's), (43, 8802), (Start: 45 @8808 has 21 MA's), (Start: 46 @8811 has 178 MA's), (59, 8841), (99, 9000), (100, 9003), (122, 9084), (129, 9138),

Gene: Chancellor_16 Start: 10621, Stop: 10977, Start Num: 48

Candidate Starts for Chancellor_16:

(Start: 48 @10621 has 43 MA's), (77, 10735), (103, 10819), (110, 10849), (119, 10882), (122, 10894), (129, 10948),

Gene: Che9d_10 Start: 6447, Stop: 6800, Start Num: 52

Candidate Starts for Che9d_10:

(34, 6396), (35, 6402), (Start: 52 @6447 has 87 MA's), (61, 6477), (71, 6528), (96, 6633), (102, 6651), (109, 6684), (128, 6774),

Gene: CheeseTouch_10 Start: 6485, Stop: 6832, Start Num: 50

Candidate Starts for CheeseTouch_10:

(36, 6449), (Start: 50 @6485 has 19 MA's), (62, 6524), (95, 6659), (96, 6662), (106, 6695), (117, 6740), (126, 6791), (128, 6806), (132, 6821),

Gene: CheetoDust_15 Start: 9381, Stop: 9737, Start Num: 46

Candidate Starts for CheetoDust_15:

(Start: 46 @9381 has 178 MA's), (59, 9405), (75, 9483), (77, 9486), (80, 9495), (100, 9564), (119, 9633), (128, 9693), (132, 9708),

Gene: Cheetobro_16 Start: 10621, Stop: 10977, Start Num: 48

Candidate Starts for Cheetobro_16:

(Start: 48 @10621 has 43 MA's), (77, 10735), (103, 10819), (110, 10849), (119, 10882), (122, 10894), (129, 10948),

Gene: Cherrybomb426_10 Start: 8811, Stop: 9167, Start Num: 46

Candidate Starts for Cherrybomb426_10:

(25, 8745), (Start: 26 @8751 has 2 MA's), (43, 8802), (Start: 45 @8808 has 21 MA's), (Start: 46 @8811 has 178 MA's), (59, 8841), (99, 9000), (100, 9003), (122, 9084), (129, 9138),

Gene: CherryonLim_11 Start: 7446, Stop: 7787, Start Num: 52

Candidate Starts for CherryonLim_11:

(Start: 52 @7446 has 87 MA's), (64, 7482), (93, 7605), (99, 7620), (111, 7668), (129, 7767),

Gene: Chris_14 Start: 8298, Stop: 8651, Start Num: 46

Candidate Starts for Chris_14:

(Start: 46 @8298 has 178 MA's), (59, 8319), (64, 8337), (69, 8367), (78, 8403), (93, 8460), (100, 8478), (101, 8481), (111, 8517), (119, 8547), (128, 8607), (132, 8622),

Gene: Cleo_10 Start: 7123, Stop: 7470, Start Num: 52

Candidate Starts for Cleo_10:

(Start: 52 @7123 has 87 MA's), (95, 7285), (100, 7300), (101, 7303), (119, 7384),

Gene: Coleslaw_10 Start: 8811, Stop: 9167, Start Num: 46

Candidate Starts for Coleslaw_10:

(25, 8745), (Start: 26 @8751 has 2 MA's), (43, 8802), (Start: 45 @8808 has 21 MA's), (Start: 46 @8811 has 178 MA's), (59, 8841), (99, 9000), (100, 9003), (122, 9084), (129, 9138),

Gene: Collard_13 Start: 9522, Stop: 9884, Start Num: 46

Candidate Starts for Collard_13:

(Start: 46 @9522 has 178 MA's), (59, 9543), (66, 9567), (77, 9624), (100, 9702), (110, 9738), (119, 9771), (128, 9831), (132, 9846),

Gene: Confidence_10 Start: 7478, Stop: 7825, Start Num: 52

Candidate Starts for Confidence_10:

(Start: 52 @7478 has 87 MA's), (75, 7586), (117, 7733), (129, 7805),

Gene: Cozz_10 Start: 6924, Stop: 7265, Start Num: 52

Candidate Starts for Cozz_10:

(Start: 52 @6924 has 87 MA's), (56, 6933), (70, 6993), (95, 7086), (121, 7188),

Gene: Crater_10 Start: 6791, Stop: 7132, Start Num: 52

Candidate Starts for Crater_10:

(28, 6716), (38, 6758), (Start: 52 @6791 has 87 MA's), (59, 6812), (67, 6842), (95, 6956), (96, 6959), (98, 6965), (102, 6977), (118, 7043), (129, 7112), (131, 7118), (132, 7121),

Gene: Crespo_10 Start: 8812, Stop: 9168, Start Num: 46

Candidate Starts for Crespo_10:

(25, 8746), (Start: 26 @8752 has 2 MA's), (43, 8803), (Start: 45 @8809 has 21 MA's), (Start: 46 @8812 has 178 MA's), (59, 8842), (99, 9001), (100, 9004), (122, 9085), (129, 9139),

Gene: CrimD_15 Start: 9333, Stop: 9689, Start Num: 46

Candidate Starts for CrimD_15:

(Start: 46 @9333 has 178 MA's), (59, 9357), (75, 9435), (77, 9438), (100, 9516), (119, 9585), (128, 9645), (132, 9660),

Gene: Curiosium_16 Start: 8809, Stop: 9162, Start Num: 47

Candidate Starts for Curiosium_16:

(Start: 47 @8809 has 17 MA's), (59, 8830), (83, 8932), (93, 8971), (100, 8989), (101, 8992), (111, 9028), (119, 9058), (132, 9133),

Gene: DMoney_10 Start: 8811, Stop: 9167, Start Num: 46

Candidate Starts for DMoney_10:

(25, 8745), (Start: 26 @8751 has 2 MA's), (43, 8802), (Start: 45 @8808 has 21 MA's), (Start: 46 @8811 has 178 MA's), (59, 8841), (99, 9000), (100, 9003), (122, 9084), (129, 9138),

Gene: DNAIII_0010 Start: 8820, Stop: 9176, Start Num: 46

Candidate Starts for DNAIII_0010:

(25, 8754), (Start: 26 @8760 has 2 MA's), (43, 8811), (Start: 45 @8817 has 21 MA's), (Start: 46 @8820 has 178 MA's), (59, 8850), (99, 9009), (100, 9012), (122, 9093), (129, 9147),

Gene: Dadosky_13 Start: 9440, Stop: 9802, Start Num: 46

Candidate Starts for Dadosky_13:

(Start: 46 @9440 has 178 MA's), (66, 9485), (77, 9542), (85, 9578), (87, 9584), (93, 9602), (100, 9620), (119, 9689), (128, 9749), (132, 9764),

Gene: Dalmuri_15 Start: 9404, Stop: 9760, Start Num: 46

Candidate Starts for Dalmuri_15:

(Start: 46 @9404 has 178 MA's), (59, 9428), (77, 9509), (100, 9587), (111, 9626), (119, 9656), (128, 9716), (132, 9731),

Gene: Darionha_10 Start: 8808, Stop: 9167, Start Num: 45

Candidate Starts for Darionha_10:

(25, 8745), (Start: 26 @8751 has 2 MA's), (43, 8802), (Start: 45 @8808 has 21 MA's), (Start: 46 @8811 has 178 MA's), (59, 8841), (99, 9000), (100, 9003), (122, 9084), (129, 9138),

Gene: DarthP_14 Start: 9299, Stop: 9697, Start Num: 46

Candidate Starts for DarthP_14:

(Start: 46 @9299 has 178 MA's), (64, 9338), (100, 9479), (119, 9548), (128, 9608), (132, 9623), (133, 9626),

Gene: Dartin_15 Start: 8435, Stop: 8788, Start Num: 47

Candidate Starts for Dartin_15:

(Start: 47 @8435 has 17 MA's), (59, 8456), (75, 8534), (83, 8558), (93, 8597), (100, 8615), (111, 8654), (119, 8684), (128, 8744), (132, 8759), (133, 8762),

Gene: Deby_15 Start: 9335, Stop: 9691, Start Num: 46

Candidate Starts for Deby_15:

(Start: 46 @9335 has 178 MA's), (59, 9359), (77, 9440), (80, 9449), (100, 9518), (119, 9587), (128, 9647), (132, 9662),

Gene: Demsculpinboyz_10 Start: 6438, Stop: 6791, Start Num: 52

Candidate Starts for Demsculpinboyz_10:

(34, 6387), (35, 6393), (Start: 52 @6438 has 87 MA's), (61, 6468), (71, 6519), (96, 6624), (102, 6642), (109, 6675), (128, 6765),

Gene: Devera_15 Start: 9352, Stop: 9708, Start Num: 46

Candidate Starts for Devera_15:

(Start: 46 @9352 has 178 MA's), (59, 9376), (77, 9457), (100, 9535), (119, 9604), (128, 9664), (132, 9679),

Gene: DismalFunk_11 Start: 7362, Stop: 7712, Start Num: 48

Candidate Starts for DismalFunk_11:

(Start: 48 @7362 has 43 MA's), (60, 7386), (68, 7422), (77, 7464), (80, 7473), (83, 7485), (100, 7542), (111, 7581), (119, 7611), (128, 7671), (129, 7677), (132, 7686),

Gene: DismalStressor_11 Start: 7362, Stop: 7712, Start Num: 48

Candidate Starts for DismalStressor_11:

(Start: 48 @7362 has 43 MA's), (60, 7386), (68, 7422), (77, 7464), (80, 7473), (83, 7485), (100, 7542), (111, 7581), (119, 7611), (128, 7671), (129, 7677), (132, 7686),

Gene: Dole_15 Start: 9354, Stop: 9710, Start Num: 46

Candidate Starts for Dole_15:

(Start: 46 @9354 has 178 MA's), (59, 9378), (77, 9459), (100, 9537), (119, 9606), (128, 9666), (132, 9681),

Gene: DrHayes_15 Start: 9306, Stop: 9662, Start Num: 46

Candidate Starts for DrHayes_15:

(Start: 46 @9306 has 178 MA's), (59, 9330), (100, 9489), (119, 9558), (128, 9618), (132, 9633),

Gene: Dre3_10 Start: 7070, Stop: 7417, Start Num: 52

Candidate Starts for Dre3_10:

(Start: 52 @7070 has 87 MA's), (95, 7232), (100, 7247), (101, 7250), (119, 7331),

Gene: Durfee_15 Start: 9404, Stop: 9760, Start Num: 46

Candidate Starts for Durfee_15:

(Start: 46 @9404 has 178 MA's), (59, 9428), (77, 9509), (100, 9587), (111, 9626), (119, 9656), (128, 9716), (132, 9731),

Gene: ECartman_10 Start: 8811, Stop: 9167, Start Num: 46

Candidate Starts for ECartman_10:

(25, 8745), (Start: 26 @8751 has 2 MA's), (43, 8802), (Start: 45 @8808 has 21 MA's), (Start: 46 @8811 has 178 MA's), (59, 8841), (99, 9000), (100, 9003), (122, 9084), (129, 9138),

Gene: EMSquaredA_10 Start: 7484, Stop: 7831, Start Num: 52

Candidate Starts for EMSquaredA_10:

(Start: 52 @7484 has 87 MA's), (75, 7592), (117, 7739), (129, 7811),

Gene: Ecliptus_10 Start: 6513, Stop: 6860, Start Num: 51

Candidate Starts for Ecliptus_10:

(7, 6228), (8, 6261), (32, 6462), (Start: 51 @6513 has 2 MA's), (81, 6624), (102, 6705), (107, 6726), (110, 6744), (118, 6771), (131, 6843), (132, 6846),

Gene: Edugator_12 Start: 9440, Stop: 9802, Start Num: 46

Candidate Starts for Edugator_12:

(Start: 46 @9440 has 178 MA's), (66, 9485), (77, 9542), (85, 9578), (87, 9584), (93, 9602), (100, 9620), (119, 9689), (128, 9749), (132, 9764),

Gene: Efra2_15 Start: 8295, Stop: 8654, Start Num: 47

Candidate Starts for Efra2_15:

(41, 8280), (Start: 47 @8295 has 17 MA's), (59, 8322), (75, 8400), (83, 8424), (93, 8463), (100, 8481), (108, 8505), (110, 8517), (119, 8550), (132, 8625),

Gene: Ekdilam_12 Start: 9026, Stop: 9418, Start Num: 46

Candidate Starts for Ekdilam_12:

(Start: 46 @9026 has 178 MA's), (64, 9065), (93, 9188), (100, 9206), (119, 9275), (128, 9335), (132, 9350), (133, 9353),

Gene: Elinal_11 Start: 6701, Stop: 7042, Start Num: 52

Candidate Starts for Elinal_11:

(Start: 52 @6701 has 87 MA's), (64, 6737), (93, 6860), (129, 7022),

Gene: Elliott_10 Start: 6923, Stop: 7264, Start Num: 52

Candidate Starts for Elliott_10:

(Start: 52 @6923 has 87 MA's), (56, 6932), (70, 6992), (95, 7085), (121, 7187),

Gene: Ellie_12 Start: 9073, Stop: 9459, Start Num: 46

Candidate Starts for Ellie_12:

(Start: 46 @9073 has 178 MA's), (64, 9112), (100, 9253), (119, 9322), (133, 9400),

Gene: Emalyn_9 Start: 6652, Stop: 6993, Start Num: 52

Candidate Starts for Emalyn_9:

(Start: 52 @6652 has 87 MA's), (96, 6817), (121, 6916), (129, 6973),

Gene: Emerson_15 Start: 9364, Stop: 9720, Start Num: 46

Candidate Starts for Emerson_15:

(Start: 46 @9364 has 178 MA's), (59, 9388), (77, 9469), (80, 9478), (100, 9547), (119, 9616), (128, 9676), (132, 9691),

Gene: EnalisNailo_10 Start: 7484, Stop: 7831, Start Num: 52

Candidate Starts for EnalisNailo_10:

(Start: 52 @7484 has 87 MA's), (75, 7592), (117, 7739), (129, 7811),

Gene: Enkosi_11 Start: 8651, Stop: 9004, Start Num: 47

Candidate Starts for Enkosi_11:

(Start: 47 @8651 has 17 MA's), (59, 8672), (80, 8762), (93, 8813), (96, 8819), (100, 8831), (117, 8891), (119, 8900), (128, 8960), (132, 8975), (133, 8978),

Gene: Eponine_16 Start: 10485, Stop: 10841, Start Num: 48

Candidate Starts for Eponine_16:

(Start: 48 @10485 has 43 MA's), (77, 10599), (103, 10683), (110, 10713), (119, 10746), (129, 10812),

Gene: FF47_12 Start: 8188, Stop: 8562, Start Num: 45

Candidate Starts for FF47_12:

(Start: 45 @8188 has 21 MA's), (59, 8227), (73, 8299), (92, 8374), (100, 8392), (101, 8395), (127, 8527), (130, 8539),

Gene: Feastonyeet_9 Start: 6720, Stop: 7061, Start Num: 52

Candidate Starts for Feastonyeet_9:

(Start: 52 @6720 has 87 MA's), (64, 6756), (65, 6759), (93, 6879), (99, 6894), (129, 7041),

Gene: Fefferhead_14 Start: 9240, Stop: 9626, Start Num: 46

Candidate Starts for Fefferhead_14:

(Start: 46 @9240 has 178 MA's), (64, 9279), (77, 9342), (100, 9420), (119, 9489), (133, 9567),

Gene: Feyre_13 Start: 9388, Stop: 9750, Start Num: 46

Candidate Starts for Feyre_13:

(Start: 46 @9388 has 178 MA's), (59, 9409), (77, 9490), (85, 9526), (87, 9532), (93, 9550), (100, 9568), (111, 9607), (119, 9637), (128, 9697), (132, 9712), (133, 9715),

Gene: Findley_11 Start: 7362, Stop: 7712, Start Num: 48

Candidate Starts for Findley_11:

(Start: 48 @7362 has 43 MA's), (60, 7386), (68, 7422), (77, 7464), (80, 7473), (83, 7485), (100, 7542), (111, 7581), (119, 7611), (128, 7671), (129, 7677), (132, 7686),

Gene: Fionnbharth_16 Start: 10611, Stop: 10967, Start Num: 48

Candidate Starts for Fionnbharth_16:

(Start: 48 @10611 has 43 MA's), (77, 10725), (103, 10809), (110, 10839), (119, 10872), (122, 10884), (129, 10938),

Gene: FlagStaff_10 Start: 8880, Stop: 9236, Start Num: 46

Candidate Starts for FlagStaff_10:

(1, 8511), (10, 8712), (35, 8853), (Start: 46 @8880 has 178 MA's), (66, 8934), (69, 8958), (100, 9072), (119, 9141), (127, 9198), (132, 9216),

Gene: Floral_10 Start: 7484, Stop: 7831, Start Num: 52

Candidate Starts for Floral_10:

(Start: 52 @7484 has 87 MA's), (75, 7592), (117, 7739), (129, 7811),

Gene: Fribs8_11 Start: 7633, Stop: 7983, Start Num: 52

Candidate Starts for Fribs8_11:

(30, 7573), (Start: 52 @7633 has 87 MA's), (59, 7651), (66, 7675), (95, 7798), (96, 7801), (100, 7813), (101, 7816), (119, 7897), (121, 7906),

Gene: Frickyeah_10 Start: 6480, Stop: 6827, Start Num: 50

Candidate Starts for Frickyeah_10:

(36, 6444), (Start: 50 @6480 has 19 MA's), (62, 6519), (70, 6561), (90, 6633), (95, 6654), (96, 6657), (106, 6690), (112, 6717), (117, 6735), (126, 6786), (128, 6801), (129, 6807), (132, 6816),

Gene: Frosty24_10 Start: 8811, Stop: 9167, Start Num: 46

Candidate Starts for Frosty24_10:

(25, 8745), (Start: 26 @8751 has 2 MA's), (43, 8802), (Start: 45 @8808 has 21 MA's), (Start: 46 @8811 has 178 MA's), (59, 8841), (99, 9000), (100, 9003), (122, 9084), (129, 9138),

Gene: Fryberger_41 Start: 15726, Stop: 16106, Start Num: 46

Candidate Starts for Fryberger_41:

(Start: 46 @15726 has 178 MA's), (76, 15843), (100, 15930), (110, 15969), (121, 16011), (126, 16047), (128, 16065), (132, 16080), (135, 16101),

Gene: GTE2_08 Start: 6602, Stop: 6943, Start Num: 52

Candidate Starts for GTE2_08:

(Start: 52 @6602 has 87 MA's), (96, 6767), (128, 6917), (129, 6923),

Gene: Gaia_7 Start: 7028, Stop: 7366, Start Num: 52

Candidate Starts for Gaia_7:

(Start: 52 @7028 has 87 MA's), (58, 7049), (59, 7052), (74, 7130), (81, 7136), (85, 7157), (86, 7160), (88, 7169), (101, 7211), (112, 7256), (119, 7283), (120, 7286), (127, 7337), (132, 7355),

Gene: Ganymede_15 Start: 9381, Stop: 9737, Start Num: 46

Candidate Starts for Ganymede_15:

(Start: 46 @9381 has 178 MA's), (59, 9405), (77, 9486), (80, 9495), (100, 9564), (119, 9633), (128, 9693), (132, 9708),

Gene: Gengar_13 Start: 9495, Stop: 9857, Start Num: 46

Candidate Starts for Gengar_13:

(Start: 46 @9495 has 178 MA's), (59, 9516), (77, 9597), (85, 9633), (87, 9639), (93, 9657), (100, 9675), (111, 9714), (119, 9744), (128, 9804), (132, 9819), (133, 9822),

Gene: Geraldini_15 Start: 9384, Stop: 9740, Start Num: 46

Candidate Starts for Geraldini_15:

(Start: 46 @9384 has 178 MA's), (59, 9408), (75, 9486), (77, 9489), (80, 9498), (100, 9567), (119, 9636), (128, 9696), (132, 9711),

Gene: Getalong_10 Start: 6480, Stop: 6827, Start Num: 50

Candidate Starts for Getalong_10:

(36, 6444), (Start: 50 @6480 has 19 MA's), (62, 6519), (70, 6561), (90, 6633), (95, 6654), (96, 6657), (106, 6690), (117, 6735), (126, 6786), (128, 6801), (132, 6816),

Gene: GiKK_13 Start: 7246, Stop: 7584, Start Num: 52

Candidate Starts for GiKK_13:

(24, 7156), (25, 7159), (Start: 26 @7165 has 2 MA's), (Start: 52 @7246 has 87 MA's), (110, 7465), (111, 7468), (129, 7564),

Gene: Gibbous_10 Start: 7070, Stop: 7417, Start Num: 52

Candidate Starts for Gibbous_10:

(Start: 52 @7070 has 87 MA's), (95, 7232), (100, 7247), (101, 7250), (119, 7331),

Gene: Gideon_10 Start: 8808, Stop: 9167, Start Num: 45

Candidate Starts for Gideon_10:

(25, 8745), (Start: 26 @8751 has 2 MA's), (43, 8802), (Start: 45 @8808 has 21 MA's), (Start: 46 @8811 has 178 MA's), (59, 8841), (99, 9000), (100, 9003), (122, 9084), (129, 9138),

Gene: GoldHunter_11 Start: 6924, Stop: 7265, Start Num: 52

Candidate Starts for GoldHunter_11:

(Start: 52 @6924 has 87 MA's), (56, 6933), (70, 6993), (95, 7086), (121, 7188),

Gene: GoldenAsh_10 Start: 8811, Stop: 9167, Start Num: 46

Candidate Starts for GoldenAsh_10:

(25, 8745), (Start: 26 @8751 has 2 MA's), (43, 8802), (Start: 45 @8808 has 21 MA's), (Start: 46 @8811 has 178 MA's), (59, 8841), (99, 9000), (100, 9003), (122, 9084), (129, 9138),

Gene: Gomashi_10 Start: 8809, Stop: 9168, Start Num: 45

Candidate Starts for Gomashi_10:

(25, 8746), (Start: 26 @8752 has 2 MA's), (43, 8803), (Start: 45 @8809 has 21 MA's), (Start: 46 @8812 has 178 MA's), (59, 8842), (99, 9001), (100, 9004), (122, 9085), (129, 9139),

Gene: Grizzly_10 Start: 8811, Stop: 9167, Start Num: 46

Candidate Starts for Grizzly_10:

(25, 8745), (Start: 26 @8751 has 2 MA's), (43, 8802), (Start: 45 @8808 has 21 MA's), (Start: 46 @8811 has 178 MA's), (59, 8841), (99, 9000), (100, 9003), (122, 9084), (129, 9138),

Gene: Guanica15_15 Start: 8311, Stop: 8670, Start Num: 47

Candidate Starts for Guanica15_15:

(41, 8296), (Start: 47 @8311 has 17 MA's), (59, 8338), (75, 8416), (83, 8440), (93, 8479), (100, 8497), (108, 8521), (110, 8533), (119, 8566), (132, 8641),

Gene: Guey18_46 Start: 16919, Stop: 17299, Start Num: 46

Candidate Starts for Guey18_46:

(Start: 46 @16919 has 178 MA's), (76, 17036), (100, 17123), (110, 17162), (121, 17204), (126, 17240), (128, 17258), (132, 17273), (135, 17294),

Gene: Guillsminger_13 Start: 9470, Stop: 9832, Start Num: 46

Candidate Starts for Guillsminger_13:

(Start: 46 @9470 has 178 MA's), (59, 9491), (77, 9572), (85, 9608), (87, 9614), (93, 9632), (100, 9650), (111, 9689), (119, 9719), (128, 9779), (132, 9794), (133, 9797),

Gene: Halo_10 Start: 8806, Stop: 9162, Start Num: 46

Candidate Starts for Halo_10:

(2, 8443), (4, 8512), (25, 8740), (Start: 26 @8746 has 2 MA's), (43, 8797), (Start: 46 @8806 has 178 MA's), (59, 8836), (99, 8995), (100, 8998), (129, 9133),

Gene: Hammy_14 Start: 9293, Stop: 9691, Start Num: 46

Candidate Starts for Hammy_14:

(Start: 46 @9293 has 178 MA's), (64, 9332), (100, 9473), (119, 9542), (128, 9602), (132, 9617), (133, 9620),

Gene: HedwigODU_15 Start: 9364, Stop: 9720, Start Num: 46

Candidate Starts for HedwigODU_15:

(Start: 46 @9364 has 178 MA's), (59, 9388), (75, 9466), (77, 9469), (80, 9478), (100, 9547), (119, 9616), (128, 9676), (132, 9691),

Gene: Heftyboy_13 Start: 9597, Stop: 9959, Start Num: 46

Candidate Starts for Heftyboy_13:

(Start: 46 @9597 has 178 MA's), (59, 9618), (77, 9699), (85, 9735), (87, 9741), (93, 9759), (100, 9777), (111, 9816), (114, 9825), (119, 9846), (128, 9906), (132, 9921), (133, 9924),

Gene: Hexbug_12 Start: 7932, Stop: 8270, Start Num: 52

Candidate Starts for Hexbug_12:

(25, 7848), (Start: 52 @7932 has 87 MA's), (80, 8031), (110, 8151), (111, 8154), (128, 8244), (129, 8250),

Gene: HippoPololi_12 Start: 7722, Stop: 8069, Start Num: 52

Candidate Starts for HippoPololi_12:

(30, 7668), (Start: 52 @7722 has 87 MA's), (95, 7884), (100, 7899), (117, 7974), (119, 7983),

Gene: Holliday_10 Start: 6485, Stop: 6832, Start Num: 50

Candidate Starts for Holliday_10:

(36, 6449), (Start: 50 @6485 has 19 MA's), (62, 6524), (95, 6659), (96, 6662), (106, 6695), (117, 6740), (126, 6791), (128, 6806), (132, 6821),

Gene: Homura_15 Start: 9404, Stop: 9760, Start Num: 46

Candidate Starts for Homura_15:

(Start: 46 @9404 has 178 MA's), (59, 9428), (77, 9509), (100, 9587), (111, 9626), (119, 9656), (128, 9716), (132, 9731),

Gene: Hope_10 Start: 8811, Stop: 9167, Start Num: 46

Candidate Starts for Hope_10:

(25, 8745), (Start: 26 @8751 has 2 MA's), (43, 8802), (Start: 45 @8808 has 21 MA's), (Start: 46 @8811 has 178 MA's), (59, 8841), (99, 9000), (100, 9003), (122, 9084), (129, 9138),

Gene: Horseradish_11 Start: 6805, Stop: 7146, Start Num: 52

Candidate Starts for Horseradish_11:

(Start: 52 @6805 has 87 MA's), (84, 6928), (121, 7069), (128, 7120), (129, 7126),

Gene: Horus_10 Start: 6480, Stop: 6827, Start Num: 50

Candidate Starts for Horus_10:

(36, 6444), (Start: 50 @6480 has 19 MA's), (62, 6519), (70, 6561), (90, 6633), (95, 6654), (96, 6657), (106, 6690), (112, 6717), (117, 6735), (126, 6786), (128, 6801), (129, 6807), (132, 6816),

Gene: Hotshotbaby7_10 Start: 8811, Stop: 9167, Start Num: 46

Candidate Starts for Hotshotbaby7_10:

(25, 8745), (Start: 26 @8751 has 2 MA's), (43, 8802), (Start: 45 @8808 has 21 MA's), (Start: 46 @8811 has 178 MA's), (59, 8841), (99, 9000), (100, 9003), (122, 9084), (129, 9138),

Gene: Hurricane_14 Start: 9383, Stop: 9736, Start Num: 46

Candidate Starts for Hurricane_14:

(Start: 46 @9383 has 178 MA's), (59, 9404), (60, 9407), (77, 9485), (80, 9494), (100, 9563), (101, 9566), (128, 9692), (132, 9707), (133, 9710),

Gene: Hyperbowlee_15 Start: 9404, Stop: 9760, Start Num: 46

Candidate Starts for Hyperbowlee_15:

(Start: 46 @9404 has 178 MA's), (59, 9428), (77, 9509), (100, 9587), (111, 9626), (119, 9656), (128, 9716), (132, 9731),

Gene: Illumine_15 Start: 9354, Stop: 9710, Start Num: 46

Candidate Starts for Illumine_15:

(Start: 46 @9354 has 178 MA's), (59, 9378), (77, 9459), (100, 9537), (119, 9606), (128, 9666), (132, 9681),

Gene: Inky_15 Start: 9404, Stop: 9760, Start Num: 46

Candidate Starts for Inky_15:

(Start: 46 @9404 has 178 MA's), (59, 9428), (77, 9509), (100, 9587), (111, 9626), (119, 9656), (128, 9716), (132, 9731),

Gene: InvictusManeo_13 Start: 9565, Stop: 9927, Start Num: 46

Candidate Starts for InvictusManeo_13:

(Start: 46 @9565 has 178 MA's), (59, 9586), (66, 9610), (77, 9667), (100, 9745), (110, 9781), (119, 9814), (128, 9874), (132, 9889),

Gene: JAWS_15 Start: 9358, Stop: 9714, Start Num: 46

Candidate Starts for JAWS_15:

(Start: 46 @9358 has 178 MA's), (59, 9382), (77, 9463), (100, 9541), (111, 9580), (119, 9610), (128, 9670), (132, 9685),

Gene: JF1_16 Start: 10610, Stop: 10966, Start Num: 48

Candidate Starts for JF1_16:

(Start: 48 @10610 has 43 MA's), (77, 10724), (103, 10808), (110, 10838), (119, 10871), (122, 10883), (129, 10937),

Gene: Jabbawokkie_11 Start: 6961, Stop: 7314, Start Num: 52

Candidate Starts for Jabbawokkie_11:

(34, 6910), (35, 6916), (Start: 52 @6961 has 87 MA's), (61, 6991), (71, 7042), (96, 7147), (102, 7165), (109, 7198), (128, 7288),

Gene: Jablanski_10 Start: 7331, Stop: 7678, Start Num: 52

Candidate Starts for Jablanski_10:

(Start: 52 @7331 has 87 MA's), (75, 7439), (89, 7484), (117, 7586), (129, 7658),

Gene: JacoRen57_9 Start: 7271, Stop: 7642, Start Num: 45

Candidate Starts for JacoRen57_9:

(17, 7157), (33, 7232), (Start: 45 @7271 has 21 MA's), (101, 7481), (102, 7484), (117, 7541), (132, 7625), (134, 7634),

Gene: Jamzy_13 Start: 7256, Stop: 7594, Start Num: 52

Candidate Starts for Jamzy_13:

(25, 7169), (Start: 26 @7175 has 2 MA's), (Start: 52 @7256 has 87 MA's), (101, 7436), (104, 7451), (110, 7475), (112, 7481), (129, 7574),

Gene: Jane_10 Start: 8808, Stop: 9167, Start Num: 45

Candidate Starts for Jane_10:

(25, 8745), (Start: 26 @8751 has 2 MA's), (43, 8802), (Start: 45 @8808 has 21 MA's), (Start: 46 @8811 has 178 MA's), (59, 8841), (99, 9000), (100, 9003), (122, 9084), (129, 9138),

Gene: Jarvi_15 Start: 9404, Stop: 9760, Start Num: 46

Candidate Starts for Jarvi_15:

(Start: 46 @9404 has 178 MA's), (59, 9428), (77, 9509), (100, 9587), (111, 9626), (119, 9656), (128, 9716), (132, 9731),

Gene: Jayhawk_15 Start: 9365, Stop: 9721, Start Num: 46

Candidate Starts for Jayhawk_15:

(Start: 46 @9365 has 178 MA's), (59, 9389), (75, 9467), (77, 9470), (80, 9479), (100, 9548), (119, 9617), (128, 9677), (132, 9692),

Gene: Jeckyll_15 Start: 9404, Stop: 9760, Start Num: 46

Candidate Starts for Jeckyll_15:

(Start: 46 @9404 has 178 MA's), (59, 9428), (77, 9509), (100, 9587), (111, 9626), (119, 9656), (128, 9716), (132, 9731),

Gene: Jolene_10 Start: 8811, Stop: 9167, Start Num: 46

Candidate Starts for Jolene_10:

(25, 8745), (Start: 26 @8751 has 2 MA's), (43, 8802), (Start: 45 @8808 has 21 MA's), (Start: 46 @8811 has 178 MA's), (59, 8841), (99, 9000), (100, 9003), (122, 9084), (129, 9138),

Gene: Jolie2_10 Start: 8054, Stop: 8407, Start Num: 46

Candidate Starts for Jolie2_10:

(4, 7757), (25, 7988), (43, 8045), (Start: 46 @8054 has 178 MA's), (75, 8162), (99, 8240), (100, 8243), (127, 8369), (132, 8387),

Gene: Jonghyun_10 Start: 8811, Stop: 9167, Start Num: 46

Candidate Starts for Jonghyun_10:

(25, 8745), (Start: 26 @8751 has 2 MA's), (43, 8802), (Start: 45 @8808 has 21 MA's), (Start: 46 @8811 has 178 MA's), (59, 8841), (99, 9000), (100, 9003), (122, 9084), (129, 9138),

Gene: JorRay_10 Start: 8811, Stop: 9167, Start Num: 46

Candidate Starts for JorRay_10:

(25, 8745), (Start: 26 @8751 has 2 MA's), (43, 8802), (Start: 45 @8808 has 21 MA's), (Start: 46 @8811 has 178 MA's), (59, 8841), (99, 9000), (100, 9003), (122, 9084), (129, 9138),

Gene: Joy99_15 Start: 9330, Stop: 9686, Start Num: 46

Candidate Starts for Joy99_15:

(Start: 46 @9330 has 178 MA's), (59, 9354), (75, 9432), (77, 9435), (80, 9444), (100, 9513), (119, 9582), (128, 9642), (132, 9657),

Gene: Juliette_16 Start: 10485, Stop: 10841, Start Num: 48

Candidate Starts for Juliette_16:

(Start: 48 @10485 has 43 MA's), (77, 10599), (103, 10683), (110, 10713), (119, 10746), (129, 10812),

Gene: Kamaru_10 Start: 6485, Stop: 6832, Start Num: 50

Candidate Starts for Kamaru_10:

(36, 6449), (Start: 50 @6485 has 19 MA's), (62, 6524), (95, 6659), (96, 6662), (106, 6695), (117, 6740), (126, 6791), (128, 6806), (132, 6821),

Gene: Kareem_10 Start: 8811, Stop: 9167, Start Num: 46

Candidate Starts for Kareem_10:

(25, 8745), (Start: 26 @8751 has 2 MA's), (43, 8802), (Start: 45 @8808 has 21 MA's), (Start: 46 @8811 has 178 MA's), (59, 8841), (99, 9000), (100, 9003), (122, 9084), (129, 9138),

Gene: Kasen3_10 Start: 8812, Stop: 9168, Start Num: 46

Candidate Starts for Kasen3_10:

(25, 8746), (Start: 26 @8752 has 2 MA's), (43, 8803), (Start: 45 @8809 has 21 MA's), (Start: 46 @8812 has 178 MA's), (59, 8842), (99, 9001), (100, 9004), (122, 9085), (129, 9139),

Gene: KayGee_10 Start: 6701, Stop: 7042, Start Num: 52

Candidate Starts for KayGee_10:

(Start: 52 @6701 has 87 MA's), (64, 6737), (93, 6860), (129, 7022),

Gene: Keelan_39 Start: 15701, Stop: 16081, Start Num: 46

Candidate Starts for Keelan_39:

(Start: 46 @15701 has 178 MA's), (110, 15944), (121, 15986), (132, 16055), (135, 16076),

Gene: Kenna_10 Start: 6480, Stop: 6827, Start Num: 50

Candidate Starts for Kenna_10:

(36, 6444), (Start: 50 @6480 has 19 MA's), (62, 6519), (70, 6561), (95, 6654), (96, 6657), (106, 6690), (117, 6735), (128, 6801), (132, 6816),

Gene: Keshu_14 Start: 9370, Stop: 9723, Start Num: 46

Candidate Starts for Keshu_14:

(Start: 46 @9370 has 178 MA's), (59, 9391), (77, 9472), (100, 9550), (101, 9553), (128, 9679), (132, 9694),

Gene: KiSi_14 Start: 8236, Stop: 8589, Start Num: 46

Candidate Starts for KiSi_14:

(Start: 46 @8236 has 178 MA's), (59, 8257), (66, 8281), (78, 8341), (93, 8398), (100, 8416), (111, 8455), (118, 8482), (119, 8485), (128, 8545), (132, 8560), (133, 8563),

Gene: Kratio_12 Start: 9192, Stop: 9554, Start Num: 46

Candidate Starts for Kratio_12:

(Start: 46 @9192 has 178 MA's), (59, 9213), (66, 9237), (77, 9294), (100, 9372), (110, 9408), (119, 9441), (128, 9501), (132, 9516),

Gene: Kraw_16 Start: 10530, Stop: 10886, Start Num: 48

Candidate Starts for Kraw_16:

(Start: 48 @10530 has 43 MA's), (77, 10644), (103, 10728), (110, 10758), (119, 10791), (122, 10803), (129, 10857),

Gene: Krueger_14 Start: 8293, Stop: 8646, Start Num: 48

Candidate Starts for Krueger_14:

(Start: 48 @8293 has 43 MA's), (85, 8431), (93, 8455), (100, 8473), (119, 8542), (128, 8602), (132, 8617),

Gene: Kuwabara_10 Start: 6791, Stop: 7132, Start Num: 52

Candidate Starts for Kuwabara_10:

(28, 6716), (38, 6758), (Start: 52 @6791 has 87 MA's), (59, 6812), (67, 6842), (95, 6956), (96, 6959), (98, 6965), (107, 6998), (118, 7043), (127, 7103), (129, 7112), (131, 7118), (132, 7121),

Gene: Larva_13 Start: 9307, Stop: 9669, Start Num: 46

Candidate Starts for Larva_13:

(Start: 46 @9307 has 178 MA's), (66, 9352), (77, 9409), (85, 9445), (87, 9451), (93, 9469), (100, 9487), (119, 9556), (128, 9616), (132, 9631),

Gene: LastHope_15 Start: 8383, Stop: 8742, Start Num: 47

Candidate Starts for LastHope_15:

(Start: 47 @8383 has 17 MA's), (59, 8410), (75, 8488), (83, 8512), (93, 8551), (100, 8569), (119, 8638), (132, 8713),

Gene: LaterM_15 Start: 9322, Stop: 9678, Start Num: 46

Candidate Starts for LaterM_15:

(Start: 46 @9322 has 178 MA's), (59, 9346), (77, 9427), (87, 9469), (100, 9505), (119, 9574), (128, 9634), (132, 9649),

Gene: Lauer_9 Start: 6750, Stop: 7091, Start Num: 52

Candidate Starts for Lauer_9:

(Start: 52 @6750 has 87 MA's), (64, 6786), (93, 6909), (99, 6924),

Gene: LeMond_14 Start: 8308, Stop: 8661, Start Num: 46

Candidate Starts for LeMond_14:

(Start: 46 @8308 has 178 MA's), (59, 8329), (66, 8353), (78, 8413), (93, 8470), (100, 8488), (111, 8527), (118, 8554), (119, 8557), (128, 8617), (132, 8632), (133, 8635),

Gene: Lemuria_10 Start: 8104, Stop: 8460, Start Num: 45

Candidate Starts for Lemuria_10:

(25, 8041), (Start: 45 @8104 has 21 MA's), (99, 8293), (100, 8296), (111, 8335), (112, 8338), (127, 8422), (132, 8440),

Gene: Leroy_10 Start: 6481, Stop: 6828, Start Num: 50

Candidate Starts for Leroy_10:

(36, 6445), (Start: 50 @6481 has 19 MA's), (62, 6520), (70, 6562), (90, 6634), (95, 6655), (96, 6658), (106, 6691), (112, 6718), (117, 6736), (126, 6787), (128, 6802), (129, 6808), (132, 6817),

Gene: Leston_13 Start: 9600, Stop: 9962, Start Num: 46

Candidate Starts for Leston_13:

(Start: 46 @9600 has 178 MA's), (59, 9621), (77, 9702), (85, 9738), (87, 9744), (93, 9762), (100, 9780), (111, 9819), (114, 9828), (119, 9849), (128, 9909), (132, 9924), (133, 9927),

Gene: Liefie_10 Start: 8810, Stop: 9166, Start Num: 46

Candidate Starts for Liefie_10:

(25, 8744), (Start: 26 @8750 has 2 MA's), (43, 8801), (Start: 45 @8807 has 21 MA's), (Start: 46 @8810 has 178 MA's), (59, 8840), (99, 8999), (100, 9002), (122, 9083), (129, 9137),

Gene: LilPharaoh_11 Start: 8651, Stop: 9004, Start Num: 47

Candidate Starts for LilPharaoh_11:

(Start: 47 @8651 has 17 MA's), (59, 8672), (80, 8762), (93, 8813), (96, 8819), (100, 8831), (117, 8891), (119, 8900), (128, 8960), (132, 8975), (133, 8978),

Gene: Lilas_10 Start: 7484, Stop: 7831, Start Num: 52

Candidate Starts for Lilas_10:

(Start: 52 @7484 has 87 MA's), (75, 7592), (117, 7739), (129, 7811),

Gene: LindNT_15 Start: 9328, Stop: 9684, Start Num: 46

Candidate Starts for LindNT_15:

(Start: 46 @9328 has 178 MA's), (59, 9352), (75, 9430), (77, 9433), (100, 9511), (119, 9580), (128, 9640), (132, 9655),

Gene: LitninMcQueen_10 Start: 6485, Stop: 6832, Start Num: 50

Candidate Starts for LitninMcQueen_10:

(36, 6449), (Start: 50 @6485 has 19 MA's), (62, 6524), (95, 6659), (96, 6662), (106, 6695), (117, 6740), (126, 6791), (128, 6806), (132, 6821),

Gene: Llorens_15 Start: 9404, Stop: 9760, Start Num: 46

Candidate Starts for Llorens_15:

(Start: 46 @9404 has 178 MA's), (59, 9428), (77, 9509), (100, 9587), (111, 9626), (119, 9656), (128, 9716), (132, 9731),

Gene: LonelyBoi_10 Start: 7331, Stop: 7678, Start Num: 52

Candidate Starts for LonelyBoi_10:

(Start: 52 @7331 has 87 MA's), (75, 7439), (117, 7586), (129, 7658),

Gene: LouisV14_10 Start: 8808, Stop: 9167, Start Num: 45

Candidate Starts for LouisV14_10:

(25, 8745), (Start: 26 @8751 has 2 MA's), (43, 8802), (Start: 45 @8808 has 21 MA's), (Start: 46 @8811 has 178 MA's), (59, 8841), (99, 9000), (100, 9003), (122, 9084), (129, 9138),

Gene: Lucky10_9 Start: 6000, Stop: 6341, Start Num: 52

Candidate Starts for Lucky10_9:

(Start: 46 @5988 has 178 MA's), (Start: 52 @6000 has 87 MA's), (73, 6093), (84, 6126), (96, 6168), (100, 6180), (107, 6207), (110, 6225), (111, 6228), (131, 6327), (132, 6330),

Gene: Lunahalos_15 Start: 9404, Stop: 9760, Start Num: 46

Candidate Starts for Lunahalos_15:

(Start: 46 @9404 has 178 MA's), (59, 9428), (77, 9509), (100, 9587), (111, 9626), (119, 9656), (128, 9716), (132, 9731),

Gene: Lutum_10 Start: 6480, Stop: 6827, Start Num: 50

Candidate Starts for Lutum_10:

(36, 6444), (Start: 50 @6480 has 19 MA's), (62, 6519), (70, 6561), (95, 6654), (96, 6657), (106, 6690), (117, 6735), (128, 6801), (132, 6816),

Gene: MAnor_10 Start: 6691, Stop: 7032, Start Num: 52

Candidate Starts for MAnor_10:

(Start: 52 @6691 has 87 MA's), (64, 6727), (93, 6850), (99, 6865), (111, 6913), (129, 7012),

Gene: MOOREtheMARYer_10 Start: 8995, Stop: 9348, Start Num: 46

Candidate Starts for MOOREtheMARYer_10:

(1, 8611), (10, 8806), (20, 8899), (35, 8962), (Start: 46 @8995 has 178 MA's), (64, 9043), (69, 9073), (91, 9154), (100, 9184), (110, 9220), (127, 9310), (132, 9328),

Gene: MScarn_12 Start: 6901, Stop: 7242, Start Num: 52

Candidate Starts for MScarn_12:

(Start: 52 @6901 has 87 MA's), (84, 7024), (121, 7165), (128, 7216), (129, 7222),

Gene: MaVan_12 Start: 7820, Stop: 8170, Start Num: 52

Candidate Starts for MaVan_12:

(30, 7760), (40, 7796), (Start: 52 @7820 has 87 MA's), (59, 7838), (66, 7862), (70, 7889), (95, 7985), (100, 8000), (107, 8030), (119, 8084), (127, 8141),

Gene: MacnCheese_15 Start: 9598, Stop: 9951, Start Num: 46

Candidate Starts for MacnCheese_15:

(Start: 46 @9598 has 178 MA's), (59, 9619), (80, 9709), (100, 9778), (101, 9781), (111, 9817), (119, 9847), (132, 9922), (133, 9925),

Gene: Maco6_10 Start: 7480, Stop: 7854, Start Num: 45

Candidate Starts for Maco6_10:

(Start: 45 @7480 has 21 MA's), (73, 7591), (101, 7687), (130, 7831),

Gene: Maliketh_10 Start: 8811, Stop: 9167, Start Num: 46

Candidate Starts for Maliketh_10:

(25, 8745), (Start: 26 @8751 has 2 MA's), (43, 8802), (Start: 45 @8808 has 21 MA's), (Start: 46 @8811 has 178 MA's), (59, 8841), (99, 9000), (100, 9003), (122, 9084), (129, 9138),

Gene: Malisha_10 Start: 7530, Stop: 7877, Start Num: 50

Candidate Starts for Malisha_10:

(11, 7341), (15, 7398), (16, 7401), (31, 7479), (36, 7494), (37, 7497), (Start: 50 @7530 has 19 MA's), (62, 7569), (70, 7611), (81, 7644), (95, 7704), (96, 7707), (106, 7740), (117, 7785), (132, 7866),

Gene: Malthus_16 Start: 10530, Stop: 10886, Start Num: 48

Candidate Starts for Malthus_16:

(Start: 48 @10530 has 43 MA's), (77, 10644), (103, 10728), (110, 10758), (119, 10791), (122, 10803), (129, 10857),

Gene: Marcoliusprime_11 Start: 7362, Stop: 7712, Start Num: 48

Candidate Starts for Marcoliusprime_11:

(Start: 48 @7362 has 43 MA's), (60, 7386), (68, 7422), (77, 7464), (80, 7473), (83, 7485), (100, 7542), (111, 7581), (119, 7611), (128, 7671), (129, 7677), (132, 7686),

Gene: Margaret_13 Start: 7641, Stop: 7979, Start Num: 52

Candidate Starts for Margaret_13:

(24, 7551), (25, 7554), (Start: 26 @7560 has 2 MA's), (Start: 52 @7641 has 87 MA's), (64, 7677), (80, 7740), (110, 7860), (129, 7959),

Gene: MarkPhew_15 Start: 8204, Stop: 8557, Start Num: 46

Candidate Starts for MarkPhew_15:

(Start: 46 @8204 has 178 MA's), (59, 8225), (64, 8243), (69, 8273), (78, 8309), (93, 8366), (100, 8384), (101, 8387), (111, 8423), (119, 8453), (128, 8513), (132, 8528), (133, 8531),

Gene: Marmie_10 Start: 8811, Stop: 9167, Start Num: 46

Candidate Starts for Marmie_10:

(25, 8745), (Start: 26 @8751 has 2 MA's), (43, 8802), (Start: 45 @8808 has 21 MA's), (Start: 46 @8811 has 178 MA's), (59, 8841), (99, 9000), (100, 9003), (122, 9084), (129, 9138),

Gene: Marshawn_16 Start: 8898, Stop: 9251, Start Num: 46

Candidate Starts for Marshawn_16:

(Start: 46 @8898 has 178 MA's), (83, 9021), (87, 9042), (93, 9060), (100, 9078), (110, 9114), (133, 9225),

Gene: Marteena_10 Start: 7484, Stop: 7831, Start Num: 52

Candidate Starts for Marteena_10:

(Start: 52 @7484 has 87 MA's), (75, 7592), (117, 7739), (129, 7811),

Gene: Mayweather_11 Start: 7324, Stop: 7665, Start Num: 52

Candidate Starts for Mayweather_11:

(Start: 52 @7324 has 87 MA's), (64, 7360), (93, 7483), (99, 7498), (111, 7546), (129, 7645),

Gene: McMater_15 Start: 8435, Stop: 8788, Start Num: 47

Candidate Starts for McMater_15:

(Start: 47 @8435 has 17 MA's), (59, 8456), (75, 8534), (83, 8558), (93, 8597), (100, 8615), (111, 8654), (119, 8684), (128, 8744), (132, 8759), (133, 8762),

Gene: Mdavu_11 Start: 8639, Stop: 8992, Start Num: 47

Candidate Starts for Mdavu_11:

(Start: 47 @8639 has 17 MA's), (59, 8660), (80, 8750), (93, 8801), (96, 8807), (100, 8819), (117, 8879), (119, 8888), (128, 8948), (132, 8963), (133, 8966),

Gene: MeaningOfLife_15 Start: 9337, Stop: 9693, Start Num: 46

Candidate Starts for MeaningOfLife_15:

(Start: 46 @9337 has 178 MA's), (59, 9361), (75, 9439), (77, 9442), (80, 9451), (100, 9520), (119, 9589), (128, 9649), (132, 9664),

Gene: Megsy_15 Start: 9331, Stop: 9687, Start Num: 46

Candidate Starts for Megsy_15:

(Start: 46 @9331 has 178 MA's), (59, 9355), (77, 9436), (100, 9514), (119, 9583), (128, 9643), (132, 9658),

Gene: Mercurio_11 Start: 8738, Stop: 9103, Start Num: 45

Candidate Starts for Mercurio_11:

(1, 8369), (25, 8675), (Start: 45 @8738 has 21 MA's), (Start: 53 @8756 has 1 MA's), (69, 8825), (75, 8858), (99, 8936), (100, 8939), (113, 8984), (127, 9065),

Gene: Milly_11 Start: 7362, Stop: 7712, Start Num: 48

Candidate Starts for Milly_11:

(Start: 48 @7362 has 43 MA's), (60, 7386), (68, 7422), (77, 7464), (80, 7473), (83, 7485), (100, 7542), (111, 7581), (119, 7611), (128, 7671), (129, 7677), (132, 7686),

Gene: Miryou_13 Start: 9448, Stop: 9810, Start Num: 46

Candidate Starts for Miryou_13:

(Start: 46 @9448 has 178 MA's), (59, 9469), (77, 9550), (85, 9586), (87, 9592), (93, 9610), (100, 9628), (111, 9667), (119, 9697), (128, 9757), (132, 9772), (133, 9775),

Gene: MissDaisy_16 Start: 10384, Stop: 10740, Start Num: 48

Candidate Starts for MissDaisy_16:

(Start: 48 @10384 has 43 MA's), (77, 10498), (103, 10582), (110, 10612), (119, 10645), (122, 10657), (129, 10711),

Gene: Mitti_16 Start: 10534, Stop: 10890, Start Num: 48

Candidate Starts for Mitti_16:

(Start: 48 @10534 has 43 MA's), (77, 10648), (103, 10732), (110, 10762), (119, 10795), (122, 10807), (129, 10861),

Gene: Morkie_9 Start: 5962, Stop: 6303, Start Num: 52

Candidate Starts for Morkie_9:

(14, 5809), (35, 5917), (Start: 46 @5950 has 178 MA's), (Start: 52 @5962 has 87 MA's), (73, 6055), (96, 6130), (100, 6142), (107, 6169), (110, 6187), (131, 6289), (132, 6292),

Gene: MortyNRick_10 Start: 6791, Stop: 7132, Start Num: 52

Candidate Starts for MortyNRick_10:

(28, 6716), (38, 6758), (Start: 52 @6791 has 87 MA's), (59, 6812), (67, 6842), (95, 6956), (96, 6959), (98, 6965), (102, 6977), (118, 7043), (129, 7112), (131, 7118), (132, 7121),

Gene: Mowgli_10 Start: 8811, Stop: 9167, Start Num: 46

Candidate Starts for Mowgli_10:

(25, 8745), (Start: 26 @8751 has 2 MA's), (43, 8802), (Start: 45 @8808 has 21 MA's), (Start: 46 @8811 has 178 MA's), (59, 8841), (99, 9000), (100, 9003), (122, 9084), (129, 9138),

Gene: Muddy_12 Start: 8430, Stop: 8804, Start Num: 45

Candidate Starts for Muddy_12:

(Start: 45 @8430 has 21 MA's), (73, 8541), (101, 8637), (130, 8781), (134, 8796),

Gene: Mufasa_11 Start: 7348, Stop: 7698, Start Num: 48

Candidate Starts for Mufasa_11:

(Start: 48 @7348 has 43 MA's), (60, 7372), (64, 7387), (68, 7408), (77, 7450), (80, 7459), (83, 7471), (100, 7528), (101, 7531), (111, 7567), (119, 7597), (128, 7657), (129, 7663), (132, 7672),

Gene: MunkgeeRoachy_10 Start: 6971, Stop: 7312, Start Num: 52

Candidate Starts for MunkgeeRoachy_10:

(Start: 52 @6971 has 87 MA's), (56, 6980), (70, 7040), (95, 7133), (112, 7196), (121, 7235),

Gene: Murucutumbu_15 Start: 9315, Stop: 9671, Start Num: 46

Candidate Starts for Murucutumbu_15:

(Start: 46 @9315 has 178 MA's), (59, 9339), (77, 9420), (87, 9462), (100, 9498), (119, 9567), (128, 9627), (132, 9642),

Gene: Mynx_15 Start: 9384, Stop: 9740, Start Num: 46

Candidate Starts for Mynx_15:

(Start: 46 @9384 has 178 MA's), (59, 9408), (75, 9486), (77, 9489), (80, 9498), (100, 9567), (119, 9636), (128, 9696), (132, 9711),

Gene: Nebkiss_7 Start: 7029, Stop: 7367, Start Num: 52

Candidate Starts for Nebkiss_7:

(Start: 52 @7029 has 87 MA's), (58, 7050), (59, 7053), (74, 7131), (81, 7137), (85, 7158), (86, 7161), (88, 7170), (101, 7212), (112, 7257), (119, 7284), (120, 7287), (127, 7338), (132, 7356),

Gene: Nibb_14 Start: 8345, Stop: 8698, Start Num: 46

Candidate Starts for Nibb_14:

(Start: 46 @8345 has 178 MA's), (59, 8366), (64, 8384), (78, 8450), (93, 8507), (100, 8525), (101, 8528), (111, 8564), (119, 8594), (128, 8654), (132, 8669), (133, 8672),

Gene: Nibbles_12 Start: 7820, Stop: 8170, Start Num: 52

Candidate Starts for Nibbles_12:

(30, 7760), (40, 7796), (Start: 52 @7820 has 87 MA's), (59, 7838), (66, 7862), (70, 7889), (95, 7985), (100, 8000), (107, 8030), (119, 8084), (127, 8141),

Gene: Nikao_11 Start: 8651, Stop: 9004, Start Num: 47

Candidate Starts for Nikao_11:

(Start: 47 @8651 has 17 MA's), (59, 8672), (80, 8762), (93, 8813), (96, 8819), (100, 8831), (117, 8891), (119, 8900), (128, 8960), (132, 8975), (133, 8978),

Gene: Niklas_15 Start: 8435, Stop: 8788, Start Num: 47

Candidate Starts for Niklas_15:

(Start: 47 @8435 has 17 MA's), (59, 8456), (75, 8534), (83, 8558), (93, 8597), (100, 8615), (111, 8654), (119, 8684), (128, 8744), (132, 8759), (133, 8762),

Gene: Nina_11 Start: 7957, Stop: 8298, Start Num: 52

Candidate Starts for Nina_11:

(Start: 52 @7957 has 87 MA's), (56, 7966), (70, 8026), (95, 8119), (117, 8203), (121, 8221),

Gene: NoShow_10 Start: 7573, Stop: 7956, Start Num: 42

Candidate Starts for NoShow_10:

(13, 7408), (19, 7483), (Start: 26 @7513 has 2 MA's), (Start: 42 @7573 has 1 MA's), (55, 7603), (70, 7666), (74, 7693), (95, 7771), (96, 7774), (98, 7780), (101, 7789), (112, 7834), (132, 7933),

Gene: Nodigi_12 Start: 7925, Stop: 8263, Start Num: 52

Candidate Starts for Nodigi_12:

(3, 7541), (5, 7628), (25, 7841), (Start: 52 @7925 has 87 MA's), (80, 8024), (110, 8144), (111, 8147), (128, 8237), (129, 8243),

Gene: Nutello_11 Start: 8651, Stop: 9004, Start Num: 47

Candidate Starts for Nutello_11:

(Start: 47 @8651 has 17 MA's), (59, 8672), (80, 8762), (93, 8813), (96, 8819), (100, 8831), (117, 8891), (119, 8900), (128, 8960), (132, 8975), (133, 8978),

Gene: ODay_10 Start: 6511, Stop: 6858, Start Num: 51

Candidate Starts for ODay_10:

(7, 6226), (8, 6259), (32, 6460), (Start: 51 @6511 has 2 MA's), (81, 6622), (102, 6703), (107, 6724), (110, 6742), (118, 6769), (131, 6841), (132, 6844),

Gene: OctaviousRex_10 Start: 8808, Stop: 9167, Start Num: 45

Candidate Starts for OctaviousRex_10:

(25, 8745), (Start: 26 @8751 has 2 MA's), (43, 8802), (Start: 45 @8808 has 21 MA's), (Start: 46 @8811 has 178 MA's), (59, 8841), (99, 9000), (100, 9003), (122, 9084), (129, 9138),

Gene: OkiRoe_13 Start: 9470, Stop: 9832, Start Num: 46

Candidate Starts for OkiRoe_13:

(Start: 46 @9470 has 178 MA's), (59, 9491), (77, 9572), (85, 9608), (87, 9614), (93, 9632), (100, 9650), (111, 9689), (119, 9719), (128, 9779), (132, 9794), (133, 9797),

Gene: Olga_10 Start: 8811, Stop: 9167, Start Num: 46

Candidate Starts for Olga_10:

(25, 8745), (Start: 26 @8751 has 2 MA's), (43, 8802), (Start: 45 @8808 has 21 MA's), (Start: 46 @8811 has 178 MA's), (59, 8841), (99, 9000), (100, 9003), (122, 9084), (129, 9138),

Gene: OmniCritical_16 Start: 10521, Stop: 10877, Start Num: 48

Candidate Starts for OmniCritical_16:

(Start: 48 @10521 has 43 MA's), (77, 10635), (103, 10719), (110, 10749), (119, 10782), (122, 10794), (129, 10848),

Gene: Omnicron_13 Start: 8530, Stop: 8898, Start Num: 44

Candidate Starts for Omnicron_13:

(Start: 44 @8530 has 2 MA's), (59, 8557), (77, 8638), (93, 8698), (100, 8716), (111, 8755), (119, 8785), (128, 8845), (132, 8860), (133, 8863),

Gene: Orla_12 Start: 7929, Stop: 8267, Start Num: 52

Candidate Starts for Orla_12:

(5, 7632), (25, 7845), (Start: 52 @7929 has 87 MA's), (80, 8028), (110, 8148), (111, 8151), (128, 8241), (129, 8247),

Gene: Oscar_14 Start: 8309, Stop: 8662, Start Num: 46

Candidate Starts for Oscar_14:

(Start: 46 @8309 has 178 MA's), (59, 8330), (66, 8354), (78, 8414), (93, 8471), (100, 8489), (111, 8528), (118, 8555), (119, 8558), (128, 8618), (132, 8633), (133, 8636),

Gene: P3MA_10 Start: 7100, Stop: 7444, Start Num: 45

Candidate Starts for P3MA_10:

(Start: 45 @7100 has 21 MA's), (97, 7295), (105, 7307), (133, 7436),

Gene: Pace1224_10 Start: 8880, Stop: 9236, Start Num: 46

Candidate Starts for Pace1224_10:

(1, 8511), (10, 8712), (35, 8853), (Start: 46 @8880 has 178 MA's), (66, 8934), (69, 8958), (100, 9072), (119, 9141), (127, 9198), (132, 9216),

Gene: Padfoot_15 Start: 9404, Stop: 9760, Start Num: 46

Candidate Starts for Padfoot_15:

(Start: 46 @9404 has 178 MA's), (59, 9428), (77, 9509), (100, 9587), (111, 9626), (119, 9656), (128, 9716), (132, 9731),

Gene: Padpat_15 Start: 9364, Stop: 9720, Start Num: 46

Candidate Starts for Padpat_15:

(Start: 46 @9364 has 178 MA's), (59, 9388), (77, 9469), (80, 9478), (100, 9547), (119, 9616), (128, 9676), (132, 9691),

Gene: Paito_10 Start: 8910, Stop: 9266, Start Num: 46

Candidate Starts for Paito_10:

(Start: 26 @8850 has 2 MA's), (43, 8901), (Start: 46 @8910 has 178 MA's), (67, 8970), (99, 9099), (100, 9102), (119, 9171),

Gene: Paola_13 Start: 9470, Stop: 9832, Start Num: 46

Candidate Starts for Paola_13:

(Start: 46 @9470 has 178 MA's), (59, 9491), (77, 9572), (85, 9608), (87, 9614), (93, 9632), (100, 9650), (111, 9689), (119, 9719), (128, 9779), (132, 9794), (133, 9797),

Gene: Patt_16 Start: 10360, Stop: 10716, Start Num: 48

Candidate Starts for Patt_16:

(Start: 48 @10360 has 43 MA's), (77, 10474), (103, 10558), (110, 10588), (119, 10621), (122, 10633), (129, 10687),

Gene: Peanam_15 Start: 8435, Stop: 8788, Start Num: 47

Candidate Starts for Peanam_15:

(Start: 47 @8435 has 17 MA's), (59, 8456), (75, 8534), (83, 8558), (93, 8597), (100, 8615), (111, 8654), (119, 8684), (128, 8744), (132, 8759), (133, 8762),

Gene: Peeb_10 Start: 8811, Stop: 9167, Start Num: 46

Candidate Starts for Peeb_10:

(25, 8745), (Start: 26 @8751 has 2 MA's), (43, 8802), (Start: 45 @8808 has 21 MA's), (Start: 46 @8811 has 178 MA's), (59, 8841), (99, 9000), (100, 9003), (122, 9084), (129, 9138),

Gene: Peel_15 Start: 9404, Stop: 9760, Start Num: 46

Candidate Starts for Peel_15:

(Start: 46 @9404 has 178 MA's), (59, 9428), (77, 9509), (100, 9587), (111, 9626), (119, 9656), (128, 9716), (132, 9731),

Gene: Periodt_10 Start: 8811, Stop: 9167, Start Num: 46

Candidate Starts for Periodt_10:

(25, 8745), (Start: 26 @8751 has 2 MA's), (43, 8802), (Start: 45 @8808 has 21 MA's), (Start: 46 @8811 has 178 MA's), (59, 8841), (99, 9000), (100, 9003), (122, 9084), (129, 9138),

Gene: Periwinkle_10 Start: 6480, Stop: 6827, Start Num: 50

Candidate Starts for Periwinkle_10:

(36, 6444), (Start: 50 @6480 has 19 MA's), (62, 6519), (70, 6561), (90, 6633), (95, 6654), (96, 6657), (106, 6690), (117, 6735), (126, 6786), (132, 6816),

Gene: Phabuloso_10 Start: 6485, Stop: 6832, Start Num: 50

Candidate Starts for Phabuloso_10:

(36, 6449), (Start: 50 @6485 has 19 MA's), (62, 6524), (95, 6659), (96, 6662), (106, 6695), (117, 6740), (126, 6791), (128, 6806), (132, 6821),

Gene: Pharb_14 Start: 9218, Stop: 9571, Start Num: 46

Candidate Starts for Pharb_14:

(23, 9152), (Start: 46 @9218 has 178 MA's), (59, 9239), (77, 9320), (100, 9398), (101, 9401), (111, 9437), (128, 9527), (132, 9542), (133, 9545),

Gene: PhelpsODU_14 Start: 8347, Stop: 8700, Start Num: 48

Candidate Starts for PhelpsODU_14:

(Start: 48 @8347 has 43 MA's), (85, 8485), (100, 8527), (119, 8596), (128, 8656), (132, 8671),

Gene: Phish_10 Start: 8811, Stop: 9167, Start Num: 46

Candidate Starts for Phish_10:

(25, 8745), (Start: 26 @8751 has 2 MA's), (43, 8802), (Start: 45 @8808 has 21 MA's), (Start: 46 @8811 has 178 MA's), (59, 8841), (99, 9000), (100, 9003), (122, 9084), (129, 9138),

Gene: Phistory_10 Start: 6469, Stop: 6816, Start Num: 50

Candidate Starts for Phistory_10:

(36, 6433), (Start: 50 @6469 has 19 MA's), (62, 6508), (70, 6550), (95, 6643), (96, 6646), (117, 6724), (126, 6775), (128, 6790), (132, 6805),

Gene: PhorbesPhlower_9 Start: 5962, Stop: 6303, Start Num: 52

Candidate Starts for PhorbesPhlower_9:

(14, 5809), (35, 5917), (Start: 46 @5950 has 178 MA's), (Start: 52 @5962 has 87 MA's), (73, 6055), (96, 6130), (100, 6142), (107, 6169), (110, 6187), (131, 6289), (132, 6292),

Gene: Phrank_14 Start: 8291, Stop: 8644, Start Num: 48

Candidate Starts for Phrank_14:

(Start: 48 @8291 has 43 MA's), (85, 8429), (93, 8453), (100, 8471), (119, 8540), (128, 8600), (132, 8615),

Gene: Phreak_10 Start: 8808, Stop: 9167, Start Num: 45

Candidate Starts for Phreak_10:

(25, 8745), (Start: 26 @8751 has 2 MA's), (43, 8802), (Start: 45 @8808 has 21 MA's), (Start: 46 @8811 has 178 MA's), (59, 8841), (99, 9000), (100, 9003), (122, 9084), (129, 9138),

Gene: Piatt_15 Start: 9404, Stop: 9760, Start Num: 46

Candidate Starts for Piatt_15:

(Start: 46 @9404 has 178 MA's), (59, 9428), (77, 9509), (100, 9587), (111, 9626), (119, 9656), (128, 9716), (132, 9731),

Gene: PinkYoshi_10 Start: 8811, Stop: 9167, Start Num: 46

Candidate Starts for PinkYoshi_10:

(25, 8745), (Start: 26 @8751 has 2 MA's), (43, 8802), (Start: 45 @8808 has 21 MA's), (Start: 46 @8811 has 178 MA's), (59, 8841), (99, 9000), (100, 9003), (122, 9084), (129, 9138),

Gene: Pinnie_11 Start: 9461, Stop: 9814, Start Num: 46

Candidate Starts for Pinnie_11:

(10, 9272), (20, 9365), (35, 9428), (Start: 46 @9461 has 178 MA's), (64, 9509), (69, 9539), (100, 9650), (110, 9686), (127, 9776), (132, 9794),

Gene: Pixie_14 Start: 9122, Stop: 9475, Start Num: 46

Candidate Starts for Pixie_14:

(Start: 46 @9122 has 178 MA's), (59, 9143), (77, 9224), (80, 9233), (100, 9302), (101, 9305), (128, 9431), (132, 9446),

Gene: Plagueis_10 Start: 8811, Stop: 9167, Start Num: 46

Candidate Starts for Plagueis_10:

(25, 8745), (Start: 26 @8751 has 2 MA's), (43, 8802), (Start: 45 @8808 has 21 MA's), (Start: 46 @8811 has 178 MA's), (59, 8841), (99, 9000), (100, 9003), (122, 9084), (129, 9138),

Gene: Pokerus_14 Start: 9318, Stop: 9674, Start Num: 46

Candidate Starts for Pokerus_14:

(Start: 46 @9318 has 178 MA's), (59, 9342), (77, 9423), (80, 9432), (100, 9501), (119, 9570), (128, 9630), (132, 9645),

Gene: Pollux_10 Start: 7484, Stop: 7831, Start Num: 52

Candidate Starts for Pollux_10:

(Start: 52 @7484 has 87 MA's), (75, 7592), (117, 7739), (129, 7811),

Gene: Pons_10 Start: 6703, Stop: 7044, Start Num: 52

Candidate Starts for Pons_10:

(Start: 52 @6703 has 87 MA's), (64, 6739), (93, 6862), (99, 6877), (111, 6925), (129, 7024),

Gene: Posh_10 Start: 7478, Stop: 7825, Start Num: 52

Candidate Starts for Posh_10:

(Start: 52 @7478 has 87 MA's), (75, 7586), (117, 7733), (129, 7805),

Gene: PotPie_10 Start: 7554, Stop: 7895, Start Num: 52

Candidate Starts for PotPie_10:

(Start: 52 @7554 has 87 MA's), (64, 7590), (93, 7713), (129, 7875),

Gene: Prithvi_15 Start: 9328, Stop: 9684, Start Num: 46

Candidate Starts for Prithvi_15:

(Start: 46 @9328 has 178 MA's), (59, 9352), (75, 9430), (77, 9433), (100, 9511), (119, 9580), (128, 9640), (132, 9655),

Gene: Psycho_13 Start: 9437, Stop: 9799, Start Num: 46

Candidate Starts for Psycho_13:

(Start: 46 @9437 has 178 MA's), (66, 9482), (77, 9539), (85, 9575), (87, 9581), (93, 9599), (100, 9617), (119, 9686), (128, 9746), (132, 9761),

Gene: PsychoKiller_10 Start: 6923, Stop: 7264, Start Num: 52

Candidate Starts for PsychoKiller_10:

(Start: 52 @6923 has 87 MA's), (56, 6932), (70, 6992), (95, 7085), (121, 7187),

Gene: Pytheas_10 Start: 7331, Stop: 7678, Start Num: 52

Candidate Starts for Pytheas_10:

(Start: 52 @7331 has 87 MA's), (75, 7439), (89, 7484), (117, 7586), (129, 7658),

Gene: Quasar_10 Start: 7538, Stop: 7879, Start Num: 52

Candidate Starts for Quasar_10:

(Start: 52 @7538 has 87 MA's), (56, 7547), (70, 7607), (95, 7700), (121, 7802),

Gene: QuincyRose_14 Start: 9381, Stop: 9737, Start Num: 46

Candidate Starts for QuincyRose_14:

(Start: 46 @9381 has 178 MA's), (59, 9405), (77, 9486), (80, 9495), (100, 9564), (119, 9633), (128, 9693), (132, 9708),

Gene: Rabbs_10 Start: 8791, Stop: 9150, Start Num: 45

Candidate Starts for Rabbs_10:

(2, 8431), (4, 8500), (Start: 26 @8734 has 2 MA's), (43, 8785), (Start: 45 @8791 has 21 MA's), (Start: 46 @8794 has 178 MA's), (99, 8983), (100, 8986), (119, 9055), (129, 9121),

Gene: Ramen_15 Start: 9364, Stop: 9720, Start Num: 46

Candidate Starts for Ramen_15:

(Start: 46 @9364 has 178 MA's), (59, 9388), (75, 9466), (77, 9469), (80, 9478), (100, 9547), (119, 9616), (128, 9676), (132, 9691),

Gene: RanchParmCat_13 Start: 7641, Stop: 7979, Start Num: 52

Candidate Starts for RanchParmCat_13:

(Start: 52 @7641 has 87 MA's), (64, 7677), (80, 7740), (110, 7860), (129, 7959),

Gene: Rando14_13 Start: 8432, Stop: 8800, Start Num: 44

Candidate Starts for Rando14_13:

(Start: 44 @8432 has 2 MA's), (59, 8459), (77, 8540), (93, 8600), (100, 8618), (111, 8657), (112, 8660), (128, 8747), (132, 8762), (133, 8765),

Gene: Rapunzel97_15 Start: 9365, Stop: 9721, Start Num: 46

Candidate Starts for Rapunzel97_15:

(Start: 46 @9365 has 178 MA's), (59, 9389), (75, 9467), (77, 9470), (80, 9479), (100, 9548), (119, 9617), (128, 9677), (132, 9692),

Gene: RedBaron_11 Start: 6968, Stop: 7309, Start Num: 52

Candidate Starts for RedBaron_11:

(Start: 52 @6968 has 87 MA's), (56, 6977), (70, 7037), (95, 7130), (121, 7232),

Gene: Remy19_10 Start: 8808, Stop: 9167, Start Num: 45

Candidate Starts for Remy19_10:

(25, 8745), (Start: 26 @8751 has 2 MA's), (43, 8802), (Start: 45 @8808 has 21 MA's), (Start: 46 @8811 has 178 MA's), (59, 8841), (99, 9000), (100, 9003), (122, 9084), (129, 9138),

Gene: Renaissance_10 Start: 8811, Stop: 9167, Start Num: 46

Candidate Starts for Renaissance_10:

(25, 8745), (Start: 26 @8751 has 2 MA's), (43, 8802), (Start: 45 @8808 has 21 MA's), (Start: 46 @8811 has 178 MA's), (59, 8841), (99, 9000), (100, 9003), (122, 9084), (129, 9138),

Gene: Reptar3000_16 Start: 10362, Stop: 10718, Start Num: 48

Candidate Starts for Reptar3000_16:

(Start: 48 @10362 has 43 MA's), (77, 10476), (103, 10560), (110, 10590), (119, 10623), (122, 10635), (129, 10689),

Gene: Richo_15 Start: 8435, Stop: 8788, Start Num: 47

Candidate Starts for Richo_15:

(Start: 47 @8435 has 17 MA's), (59, 8456), (75, 8534), (83, 8558), (93, 8597), (100, 8615), (111, 8654), (119, 8684), (128, 8744), (132, 8759), (133, 8762),

Gene: Ronaldo_44 Start: 16656, Stop: 17036, Start Num: 46

Candidate Starts for Ronaldo_44:

(Start: 46 @16656 has 178 MA's), (76, 16773), (100, 16860), (110, 16899), (121, 16941), (126, 16977), (128, 16995), (132, 17010), (135, 17031),

Gene: Rosmarinus_15 Start: 9392, Stop: 9748, Start Num: 46

Candidate Starts for Rosmarinus_15:

(Start: 46 @9392 has 178 MA's), (59, 9416), (77, 9497), (100, 9575), (111, 9614), (119, 9644), (128, 9704), (132, 9719),

Gene: Ruthiejr_15 Start: 10216, Stop: 10572, Start Num: 48

Candidate Starts for Ruthiejr_15:

(Start: 48 @10216 has 43 MA's), (77, 10330), (103, 10414), (110, 10444), (119, 10477), (129, 10543),

Gene: SamScheppers_14 Start: 10137, Stop: 10493, Start Num: 48

Candidate Starts for SamScheppers_14:

(Start: 48 @10137 has 43 MA's), (77, 10251), (103, 10335), (110, 10365), (119, 10398), (122, 10410), (129, 10464),

Gene: SamuelLPlaqson_15 Start: 9306, Stop: 9662, Start Num: 46
Candidate Starts for SamuelLPlaqson_15:
(Start: 46 @9306 has 178 MA's), (59, 9330), (100, 9489), (119, 9558), (128, 9618), (132, 9633),

Gene: Scarlett_14 Start: 8308, Stop: 8661, Start Num: 46
Candidate Starts for Scarlett_14:
(Start: 46 @8308 has 178 MA's), (59, 8329), (66, 8353), (78, 8413), (93, 8470), (100, 8488), (111, 8527), (118, 8554), (119, 8557), (128, 8617), (132, 8632), (133, 8635),

Gene: Schiebel_10 Start: 8811, Stop: 9167, Start Num: 46
Candidate Starts for Schiebel_10:
(25, 8745), (Start: 26 @8751 has 2 MA's), (43, 8802), (Start: 45 @8808 has 21 MA's), (Start: 46 @8811 has 178 MA's), (59, 8841), (99, 9000), (100, 9003), (122, 9084), (129, 9138),

Gene: SgtBeansprout_11 Start: 8651, Stop: 9004, Start Num: 47
Candidate Starts for SgtBeansprout_11:
(Start: 47 @8651 has 17 MA's), (59, 8672), (80, 8762), (93, 8813), (96, 8819), (100, 8831), (117, 8891), (119, 8900), (128, 8960), (132, 8975), (133, 8978),

Gene: ShaboiShabazz_10 Start: 8811, Stop: 9167, Start Num: 46
Candidate Starts for ShaboiShabazz_10:
(25, 8745), (Start: 26 @8751 has 2 MA's), (43, 8802), (Start: 45 @8808 has 21 MA's), (Start: 46 @8811 has 178 MA's), (59, 8841), (99, 9000), (100, 9003), (122, 9084), (129, 9138),

Gene: Shadow1_13 Start: 8202, Stop: 8555, Start Num: 48
Candidate Starts for Shadow1_13:
(Start: 48 @8202 has 43 MA's), (87, 8346), (93, 8364), (100, 8382), (111, 8421), (119, 8451), (128, 8511), (132, 8526),

Gene: Shaobing_15 Start: 8435, Stop: 8788, Start Num: 47
Candidate Starts for Shaobing_15:
(Start: 47 @8435 has 17 MA's), (59, 8456), (75, 8534), (83, 8558), (93, 8597), (100, 8615), (111, 8654), (119, 8684), (128, 8744), (132, 8759), (133, 8762),

Gene: SheckWes_9 Start: 6691, Stop: 7032, Start Num: 52
Candidate Starts for SheckWes_9:
(Start: 52 @6691 has 87 MA's), (64, 6727), (80, 6790), (93, 6850), (99, 6865), (111, 6913), (129, 7012),

Gene: ShedlockHolmes_14 Start: 9370, Stop: 9723, Start Num: 46
Candidate Starts for ShedlockHolmes_14:
(Start: 46 @9370 has 178 MA's), (59, 9391), (77, 9472), (80, 9481), (100, 9550), (101, 9553), (128, 9679), (132, 9694),

Gene: ShiaSurprise_15 Start: 9404, Stop: 9760, Start Num: 46
Candidate Starts for ShiaSurprise_15:
(Start: 46 @9404 has 178 MA's), (59, 9428), (77, 9509), (100, 9587), (111, 9626), (119, 9656), (128, 9716), (132, 9731),

Gene: SirPhilip_14 Start: 8065, Stop: 8418, Start Num: 46
Candidate Starts for SirPhilip_14:
(Start: 46 @8065 has 178 MA's), (59, 8086), (83, 8188), (93, 8227), (100, 8245), (119, 8314), (128, 8374), (132, 8389), (133, 8392),

Gene: Sizemore_10 Start: 8812, Stop: 9168, Start Num: 46

Candidate Starts for Sizemore_10:

(25, 8746), (Start: 26 @8752 has 2 MA's), (43, 8803), (Start: 45 @8809 has 21 MA's), (Start: 46 @8812 has 178 MA's), (59, 8842), (99, 9001), (100, 9004), (122, 9085), (129, 9139),

Gene: SketchMex_9 Start: 6907, Stop: 7248, Start Num: 52

Candidate Starts for SketchMex_9:

(Start: 52 @6907 has 87 MA's), (84, 7030), (121, 7171), (128, 7222), (129, 7228),

Gene: Slarp_16 Start: 10621, Stop: 10977, Start Num: 48

Candidate Starts for Slarp_16:

(Start: 48 @10621 has 43 MA's), (77, 10735), (103, 10819), (110, 10849), (119, 10882), (122, 10894), (129, 10948),

Gene: Sleepyhead_9 Start: 6893, Stop: 7246, Start Num: 49

Candidate Starts for Sleepyhead_9:

(Start: 49 @6893 has 1 MA's), (82, 7016), (124, 7196),

Gene: Slimphazie_15 Start: 9365, Stop: 9721, Start Num: 46

Candidate Starts for Slimphazie_15:

(Start: 46 @9365 has 178 MA's), (59, 9389), (75, 9467), (77, 9470), (80, 9479), (100, 9548), (119, 9617), (128, 9677), (132, 9692),

Gene: Sneeze_10 Start: 8793, Stop: 9149, Start Num: 46

Candidate Starts for Sneeze_10:

(2, 8430), (4, 8499), (Start: 26 @8733 has 2 MA's), (43, 8784), (Start: 45 @8790 has 21 MA's), (Start: 46 @8793 has 178 MA's), (99, 8982), (100, 8985), (119, 9054), (129, 9120),

Gene: SoSeph_13 Start: 9597, Stop: 9959, Start Num: 46

Candidate Starts for SoSeph_13:

(Start: 46 @9597 has 178 MA's), (59, 9618), (77, 9699), (85, 9735), (87, 9741), (93, 9759), (100, 9777), (111, 9816), (114, 9825), (119, 9846), (128, 9906), (132, 9921), (133, 9924),

Gene: Sopespian_10 Start: 6923, Stop: 7264, Start Num: 52

Candidate Starts for Sopespian_10:

(Start: 52 @6923 has 87 MA's), (56, 6932), (70, 6992), (95, 7085), (121, 7187),

Gene: Soul22_10 Start: 6437, Stop: 6790, Start Num: 52

Candidate Starts for Soul22_10:

(34, 6386), (35, 6392), (Start: 52 @6437 has 87 MA's), (61, 6467), (71, 6518), (96, 6623), (102, 6641), (109, 6674), (128, 6764),

Gene: Spartoi_8 Start: 6006, Stop: 6344, Start Num: 54

Candidate Starts for Spartoi_8:

(Start: 54 @6006 has 1 MA's), (57, 6015), (63, 6036), (79, 6117), (94, 6174),

Gene: Spock_15 Start: 9404, Stop: 9760, Start Num: 46

Candidate Starts for Spock_15:

(Start: 46 @9404 has 178 MA's), (59, 9428), (77, 9509), (100, 9587), (111, 9626), (119, 9656), (128, 9716), (132, 9731),

Gene: Spooky_10 Start: 6478, Stop: 6825, Start Num: 50

Candidate Starts for Spooky_10:

(6, 6193), (9, 6265), (12, 6292), (18, 6367), (31, 6427), (37, 6445), (Start: 50 @6478 has 19 MA's), (62, 6517), (70, 6559), (81, 6592), (95, 6652), (96, 6655), (117, 6733), (126, 6784), (132, 6814),

Gene: Squiddly_11 Start: 7165, Stop: 7512, Start Num: 50

Candidate Starts for Squiddly_11:

(36, 7129), (Start: 50 @7165 has 19 MA's), (62, 7204), (70, 7246), (95, 7339), (96, 7342), (117, 7420), (126, 7471), (128, 7486), (132, 7501),

Gene: Stargaze_10 Start: 9061, Stop: 9423, Start Num: 45

Candidate Starts for Stargaze_10:

(25, 8998), (Start: 45 @9061 has 21 MA's), (95, 9241), (100, 9256), (110, 9292), (127, 9382), (132, 9400),

Gene: SteamedHams_12 Start: 6942, Stop: 7283, Start Num: 52

Candidate Starts for SteamedHams_12:

(Start: 52 @6942 has 87 MA's), (96, 7107), (128, 7257), (129, 7263),

Gene: Stinson_15 Start: 9327, Stop: 9683, Start Num: 46

Candidate Starts for Stinson_15:

(Start: 46 @9327 has 178 MA's), (59, 9351), (77, 9432), (87, 9474), (100, 9510), (119, 9579), (128, 9639), (132, 9654),

Gene: Strobilo_11 Start: 7362, Stop: 7712, Start Num: 48

Candidate Starts for Strobilo_11:

(Start: 48 @7362 has 43 MA's), (60, 7386), (68, 7422), (77, 7464), (80, 7473), (83, 7485), (100, 7542), (111, 7581), (119, 7611), (128, 7671), (129, 7677), (132, 7686),

Gene: Sulley_15 Start: 9334, Stop: 9690, Start Num: 46

Candidate Starts for Sulley_15:

(Start: 46 @9334 has 178 MA's), (59, 9358), (77, 9439), (80, 9448), (100, 9517), (119, 9586), (128, 9646), (132, 9661),

Gene: SummitAcademy_9 Start: 6769, Stop: 7110, Start Num: 52

Candidate Starts for SummitAcademy_9:

(Start: 52 @6769 has 87 MA's), (64, 6805), (93, 6928), (129, 7090),

Gene: Sunflower1121_13 Start: 8213, Stop: 8566, Start Num: 48

Candidate Starts for Sunflower1121_13:

(Start: 48 @8213 has 43 MA's), (87, 8357), (93, 8375), (100, 8393), (111, 8432), (119, 8462), (128, 8522), (132, 8537),

Gene: Survivors_12 Start: 7674, Stop: 8024, Start Num: 52

Candidate Starts for Survivors_12:

(30, 7614), (40, 7650), (Start: 52 @7674 has 87 MA's), (59, 7692), (66, 7716), (70, 7743), (95, 7839), (100, 7854), (107, 7884), (119, 7938), (127, 7995),

Gene: SweatNTears_12 Start: 7427, Stop: 7768, Start Num: 52

Candidate Starts for SweatNTears_12:

(Start: 52 @7427 has 87 MA's), (84, 7550), (121, 7691), (128, 7742), (129, 7748),

Gene: Sweets_10 Start: 8806, Stop: 9162, Start Num: 46

Candidate Starts for Sweets_10:

(2, 8443), (4, 8512), (25, 8740), (Start: 26 @8746 has 2 MA's), (43, 8797), (Start: 46 @8806 has 178 MA's), (59, 8836), (99, 8995), (100, 8998), (129, 9133),

Gene: Syra333_14 Start: 8309, Stop: 8662, Start Num: 48

Candidate Starts for Syra333_14:

(Start: 48 @8309 has 43 MA's), (87, 8453), (93, 8471), (100, 8489), (128, 8618), (132, 8633),

Gene: TBond007_14 Start: 9121, Stop: 9474, Start Num: 46

Candidate Starts for TBond007_14:

(Start: 46 @9121 has 178 MA's), (59, 9142), (77, 9223), (80, 9232), (100, 9301), (101, 9304), (128, 9430), (132, 9445),

Gene: TClif_14 Start: 8297, Stop: 8650, Start Num: 48

Candidate Starts for TClif_14:

(Start: 48 @8297 has 43 MA's), (77, 8399), (93, 8459), (100, 8477), (119, 8546), (128, 8606), (132, 8621),

Gene: TM4_11 Start: 7414, Stop: 7764, Start Num: 48

Candidate Starts for TM4_11:

(Start: 48 @7414 has 43 MA's), (60, 7438), (64, 7453), (68, 7474), (77, 7516), (83, 7537), (100, 7594), (111, 7633), (119, 7663), (128, 7723), (129, 7729), (132, 7738),

Gene: TPA4_10 Start: 7947, Stop: 8351, Start Num: 39

Candidate Starts for TPA4_10:

(39, 7947), (41, 7950), (72, 8067), (90, 8148), (91, 8154), (115, 8244), (116, 8250), (133, 8340),

Gene: Tachez_15 Start: 9327, Stop: 9683, Start Num: 46

Candidate Starts for Tachez_15:

(Start: 46 @9327 has 178 MA's), (59, 9351), (77, 9432), (80, 9441), (100, 9510), (119, 9579), (128, 9639), (132, 9654),

Gene: Taheera_10 Start: 8743, Stop: 9159, Start Num: 26

Candidate Starts for Taheera_10:

(2, 8440), (4, 8509), (Start: 26 @8743 has 2 MA's), (43, 8794), (Start: 45 @8800 has 21 MA's), (Start: 46 @8803 has 178 MA's), (99, 8992), (100, 8995), (119, 9064), (129, 9130),

Gene: TaiwanKao_15 Start: 9334, Stop: 9690, Start Num: 46

Candidate Starts for TaiwanKao_15:

(Start: 46 @9334 has 178 MA's), (59, 9358), (77, 9439), (100, 9517), (119, 9586), (128, 9646), (132, 9661),

Gene: Taquito_14 Start: 10207, Stop: 10563, Start Num: 48

Candidate Starts for Taquito_14:

(Start: 48 @10207 has 43 MA's), (77, 10321), (103, 10405), (110, 10435), (119, 10468), (129, 10534),

Gene: Terror_10 Start: 8743, Stop: 9159, Start Num: 26

Candidate Starts for Terror_10:

(2, 8440), (4, 8509), (Start: 26 @8743 has 2 MA's), (43, 8794), (Start: 45 @8800 has 21 MA's), (Start: 46 @8803 has 178 MA's), (99, 8992), (100, 8995), (119, 9064), (129, 9130),

Gene: Thyatira_13 Start: 9469, Stop: 9831, Start Num: 46

Candidate Starts for Thyatira_13:

(Start: 46 @9469 has 178 MA's), (59, 9490), (77, 9571), (85, 9607), (87, 9613), (93, 9631), (100, 9649), (111, 9688), (119, 9718), (128, 9778), (132, 9793), (133, 9796),

Gene: Tierra_14 Start: 9012, Stop: 9365, Start Num: 48

Candidate Starts for Tierra_14:

(Start: 48 @9012 has 43 MA's), (85, 9150), (93, 9174), (100, 9192), (119, 9261), (128, 9321), (132, 9336),

Gene: TingHuaYa_15 Start: 8386, Stop: 8745, Start Num: 47

Candidate Starts for TingHuaYa_15:

(Start: 47 @8386 has 17 MA's), (59, 8413), (75, 8491), (83, 8515), (93, 8554), (100, 8572), (119, 8641), (122, 8653), (132, 8716),

Gene: TiniBug_15 Start: 9306, Stop: 9662, Start Num: 46

Candidate Starts for TiniBug_15:

(Start: 46 @9306 has 178 MA's), (59, 9330), (100, 9489), (119, 9558), (128, 9618), (132, 9633),

Gene: Tiri_15 Start: 9373, Stop: 9729, Start Num: 46

Candidate Starts for Tiri_15:

(Start: 46 @9373 has 178 MA's), (59, 9397), (77, 9478), (80, 9487), (100, 9556), (119, 9625), (128, 9685), (132, 9700),

Gene: Tolls_12 Start: 6945, Stop: 7286, Start Num: 52

Candidate Starts for Tolls_12:

(Start: 52 @6945 has 87 MA's), (96, 7110), (128, 7260), (129, 7266),

Gene: TomBrady_10 Start: 8812, Stop: 9168, Start Num: 46

Candidate Starts for TomBrady_10:

(25, 8746), (Start: 26 @8752 has 2 MA's), (43, 8803), (Start: 45 @8809 has 21 MA's), (Start: 46 @8812 has 178 MA's), (59, 8842), (99, 9001), (100, 9004), (122, 9085), (129, 9139),

Gene: Topper_15 Start: 9404, Stop: 9760, Start Num: 46

Candidate Starts for Topper_15:

(Start: 46 @9404 has 178 MA's), (59, 9428), (77, 9509), (100, 9587), (111, 9626), (119, 9656), (128, 9716), (132, 9731),

Gene: Torres_11 Start: 8651, Stop: 9004, Start Num: 47

Candidate Starts for Torres_11:

(Start: 47 @8651 has 17 MA's), (59, 8672), (80, 8762), (93, 8813), (96, 8819), (100, 8831), (117, 8891), (119, 8900), (128, 8960), (132, 8975), (133, 8978),

Gene: TreyKay_15 Start: 9328, Stop: 9684, Start Num: 46

Candidate Starts for TreyKay_15:

(Start: 46 @9328 has 178 MA's), (59, 9352), (75, 9430), (77, 9433), (100, 9511), (119, 9580), (128, 9640), (132, 9655),

Gene: TribbleTrouble_13 Start: 9179, Stop: 9532, Start Num: 46

Candidate Starts for TribbleTrouble_13:

(Start: 46 @9179 has 178 MA's), (59, 9200), (77, 9281), (80, 9290), (100, 9359), (101, 9362), (111, 9398), (125, 9470), (128, 9488), (132, 9503),

Gene: Troje_10 Start: 6901, Stop: 7242, Start Num: 52

Candidate Starts for Troje_10:

(Start: 52 @6901 has 87 MA's), (84, 7024), (121, 7165), (128, 7216), (129, 7222),

Gene: TruffulaTree_15 Start: 9361, Stop: 9717, Start Num: 46

Candidate Starts for TruffulaTree_15:

(Start: 46 @9361 has 178 MA's), (59, 9385), (75, 9463), (77, 9466), (80, 9475), (100, 9544), (119, 9613), (128, 9673), (132, 9688),

Gene: Twitch_15 Start: 9404, Stop: 9760, Start Num: 46

Candidate Starts for Twitch_15:

(Start: 46 @9404 has 178 MA's), (59, 9428), (77, 9509), (100, 9587), (111, 9626), (119, 9656), (128, 9716), (132, 9731),

Gene: Typhonomachy_11 Start: 6923, Stop: 7264, Start Num: 52

Candidate Starts for Typhonomachy_11:

(21, 6824), (22, 6827), (24, 6833), (Start: 52 @6923 has 87 MA's), (56, 6932), (70, 6992), (95, 7085), (121, 7187),

Gene: Unicorn_14 Start: 8347, Stop: 8700, Start Num: 48

Candidate Starts for Unicorn_14:

(Start: 48 @8347 has 43 MA's), (85, 8485), (100, 8527), (119, 8596), (128, 8656), (132, 8671),

Gene: Urkel_15 Start: 9306, Stop: 9662, Start Num: 46

Candidate Starts for Urkel_15:

(Start: 46 @9306 has 178 MA's), (59, 9330), (100, 9489), (119, 9558), (128, 9618), (132, 9633),

Gene: Validus_15 Start: 8355, Stop: 8708, Start Num: 47

Candidate Starts for Validus_15:

(Start: 47 @8355 has 17 MA's), (59, 8376), (75, 8454), (93, 8517), (100, 8535), (119, 8604), (128, 8664), (132, 8679), (133, 8682),

Gene: Veliki_15 Start: 9404, Stop: 9760, Start Num: 46

Candidate Starts for Veliki_15:

(Start: 46 @9404 has 178 MA's), (59, 9428), (77, 9509), (100, 9587), (111, 9626), (119, 9656), (128, 9716), (132, 9731),

Gene: Vine_11 Start: 7698, Stop: 8039, Start Num: 52

Candidate Starts for Vine_11:

(Start: 52 @7698 has 87 MA's), (64, 7734), (93, 7857), (99, 7872), (129, 8019),

Gene: Volt_43 Start: 16656, Stop: 17036, Start Num: 46

Candidate Starts for Volt_43:

(Start: 46 @16656 has 178 MA's), (76, 16773), (100, 16860), (110, 16899), (121, 16941), (126, 16977), (128, 16995), (132, 17010), (135, 17031),

Gene: Waterfoul_13 Start: 9491, Stop: 9853, Start Num: 46

Candidate Starts for Waterfoul_13:

(Start: 46 @9491 has 178 MA's), (59, 9512), (77, 9593), (85, 9629), (87, 9635), (93, 9653), (100, 9671), (111, 9710), (119, 9740), (128, 9800), (132, 9815), (133, 9818),

Gene: Wendigo_10 Start: 8811, Stop: 9167, Start Num: 46

Candidate Starts for Wendigo_10:

(25, 8745), (Start: 26 @8751 has 2 MA's), (43, 8802), (Start: 45 @8808 has 21 MA's), (Start: 46 @8811 has 178 MA's), (59, 8841), (99, 9000), (100, 9003), (122, 9084), (129, 9138),

Gene: Whitney_10 Start: 6480, Stop: 6827, Start Num: 50

Candidate Starts for Whitney_10:

(36, 6444), (Start: 50 @6480 has 19 MA's), (62, 6519), (70, 6561), (90, 6633), (95, 6654), (96, 6657), (106, 6690), (117, 6735), (126, 6786), (128, 6801), (132, 6816),

Gene: Wintermute_16 Start: 10610, Stop: 10966, Start Num: 48

Candidate Starts for Wintermute_16:

(Start: 48 @10610 has 43 MA's), (77, 10724), (103, 10808), (110, 10838), (119, 10871), (122, 10883), (129, 10937),

Gene: Wrigley_10 Start: 7328, Stop: 7675, Start Num: 52

Candidate Starts for Wrigley_10:

(27, 7250), (Start: 52 @7328 has 87 MA's), (75, 7436), (117, 7583), (129, 7655),

Gene: Ximenita_15 Start: 8488, Stop: 8841, Start Num: 48

Candidate Starts for Ximenita_15:

(Start: 48 @8488 has 43 MA's), (59, 8509), (87, 8632), (93, 8650), (100, 8668), (110, 8704), (119, 8737), (128, 8797), (132, 8812),

Gene: Y10_16 Start: 10610, Stop: 10966, Start Num: 48

Candidate Starts for Y10_16:

(Start: 48 @10610 has 43 MA's), (77, 10724), (103, 10808), (110, 10838), (119, 10871), (122, 10883), (129, 10937),

Gene: Y2_16 Start: 10610, Stop: 10966, Start Num: 48

Candidate Starts for Y2_16:

(Start: 48 @10610 has 43 MA's), (77, 10724), (103, 10808), (110, 10838), (119, 10871), (122, 10883), (129, 10937),

Gene: Yakult_11 Start: 6834, Stop: 7175, Start Num: 52

Candidate Starts for Yakult_11:

(24, 6744), (25, 6747), (Start: 26 @6753 has 2 MA's), (Start: 52 @6834 has 87 MA's), (65, 6876), (70, 6906), (80, 6936), (110, 7056), (111, 7059), (129, 7155),

Gene: Yarn_9 Start: 6935, Stop: 7276, Start Num: 52

Candidate Starts for Yarn_9:

(Start: 52 @6935 has 87 MA's), (96, 7100), (128, 7250), (129, 7256),

Gene: Yoshi_10 Start: 6437, Stop: 6790, Start Num: 52

Candidate Starts for Yoshi_10:

(34, 6386), (35, 6392), (Start: 52 @6437 has 87 MA's), (61, 6467), (71, 6518), (96, 6623), (102, 6641), (109, 6674), (128, 6764),

Gene: YoureAdopted_14 Start: 9337, Stop: 9693, Start Num: 46

Candidate Starts for YoureAdopted_14:

(Start: 46 @9337 has 178 MA's), (59, 9361), (75, 9439), (77, 9442), (80, 9451), (100, 9520), (119, 9589), (128, 9649), (132, 9664),

Gene: Yummy_11 Start: 6805, Stop: 7146, Start Num: 52

Candidate Starts for Yummy_11:

(Start: 52 @6805 has 87 MA's), (84, 6928), (121, 7069), (128, 7120), (129, 7126),

Gene: Yuna_15 Start: 8481, Stop: 8834, Start Num: 48

Candidate Starts for Yuna_15:

(Start: 48 @8481 has 43 MA's), (59, 8502), (77, 8583), (93, 8643), (100, 8661), (101, 8664), (119, 8730), (128, 8790), (129, 8796), (132, 8805),

Gene: Yunkel11_15 Start: 8311, Stop: 8670, Start Num: 47

Candidate Starts for Yunkel11_15:

(41, 8296), (Start: 47 @8311 has 17 MA's), (59, 8338), (75, 8416), (83, 8440), (93, 8479), (100, 8497), (108, 8521), (110, 8533), (119, 8566), (132, 8641),

Gene: Zabiza_15 Start: 9362, Stop: 9718, Start Num: 46

Candidate Starts for Zabiza_15:

(Start: 46 @9362 has 178 MA's), (59, 9386), (75, 9464), (77, 9467), (80, 9476), (100, 9545), (119, 9614), (128, 9674), (132, 9689),

Gene: Zapner_11 Start: 6962, Stop: 7315, Start Num: 52

Candidate Starts for Zapner_11:

(34, 6911), (35, 6917), (Start: 52 @6962 has 87 MA's), (61, 6992), (71, 7043), (96, 7148), (102, 7166), (109, 7199), (128, 7289),

Gene: Zareef_14 Start: 7797, Stop: 8171, Start Num: 40

Candidate Starts for Zareef_14:

(30, 7761), (40, 7797), (Start: 52 @7821 has 87 MA's), (59, 7839), (66, 7863), (70, 7890), (95, 7986), (100, 8001), (107, 8031), (119, 8085), (127, 8142),

Gene: Zavala_15 Start: 9343, Stop: 9699, Start Num: 46

Candidate Starts for Zavala_15:

(Start: 46 @9343 has 178 MA's), (59, 9367), (77, 9448), (80, 9457), (100, 9526), (119, 9595), (128, 9655), (132, 9670),

Gene: Ziko_44 Start: 16596, Stop: 16976, Start Num: 46

Candidate Starts for Ziko_44:

(Start: 46 @16596 has 178 MA's), (76, 16713), (100, 16800), (110, 16839), (121, 16881), (126, 16917), (128, 16935), (132, 16950), (135, 16971),

Gene: ZoMa_10 Start: 8811, Stop: 9167, Start Num: 46

Candidate Starts for ZoMa_10:

(25, 8745), (Start: 26 @8751 has 2 MA's), (43, 8802), (Start: 45 @8808 has 21 MA's), (Start: 46 @8811 has 178 MA's), (59, 8841), (99, 9000), (100, 9003), (122, 9084), (129, 9138),

Gene: ZoeJ_11 Start: 7310, Stop: 7669, Start Num: 48

Candidate Starts for ZoeJ_11:

(Start: 48 @7310 has 43 MA's), (60, 7334), (64, 7349), (68, 7370), (77, 7412), (80, 7421), (83, 7433), (100, 7490), (111, 7529), (119, 7559), (128, 7619), (129, 7625), (132, 7634),

Gene: Zombie_10 Start: 8808, Stop: 9167, Start Num: 45

Candidate Starts for Zombie_10:

(25, 8745), (Start: 26 @8751 has 2 MA's), (43, 8802), (Start: 45 @8808 has 21 MA's), (Start: 46 @8811 has 178 MA's), (59, 8841), (99, 9000), (100, 9003), (122, 9084), (129, 9138),