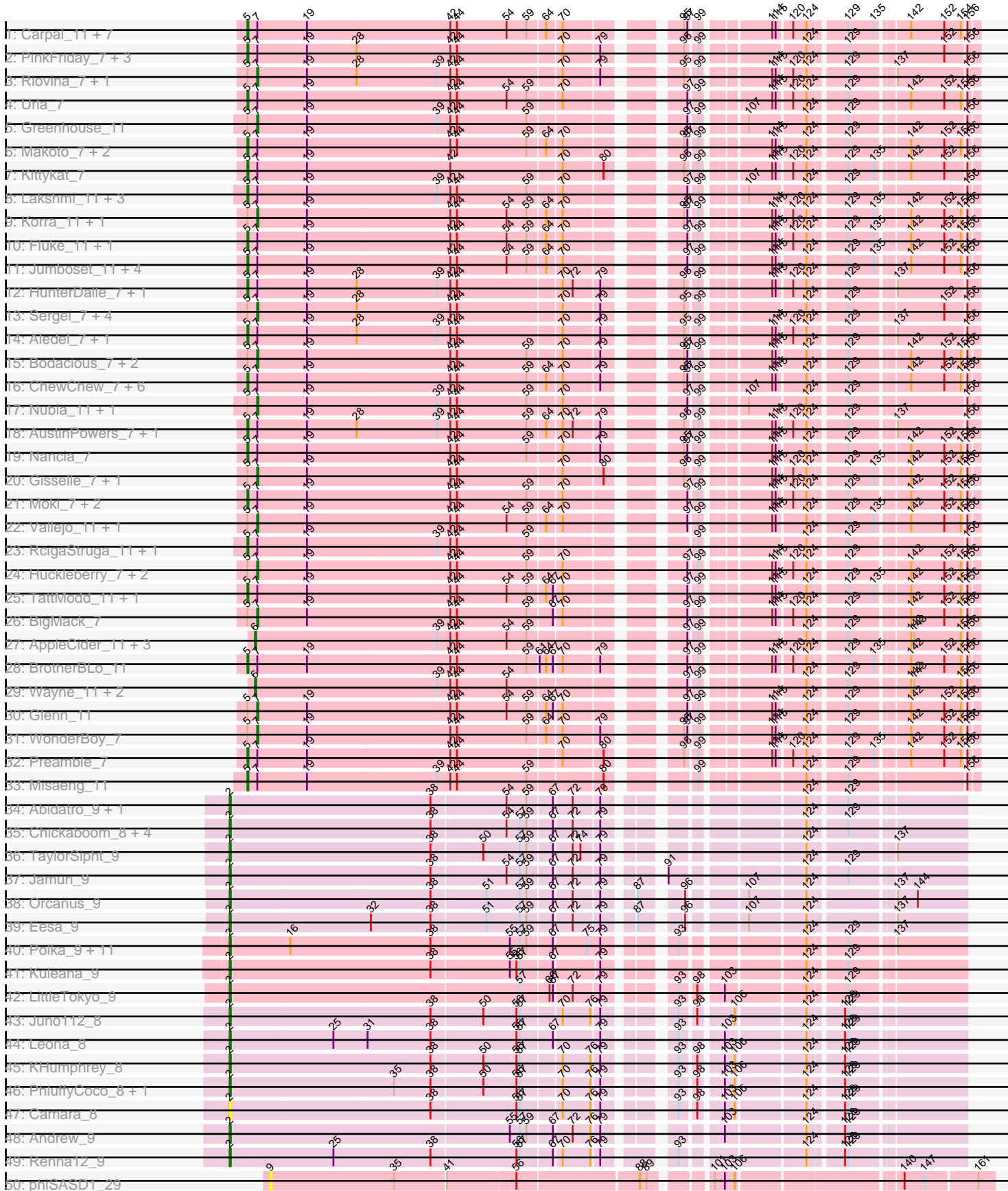
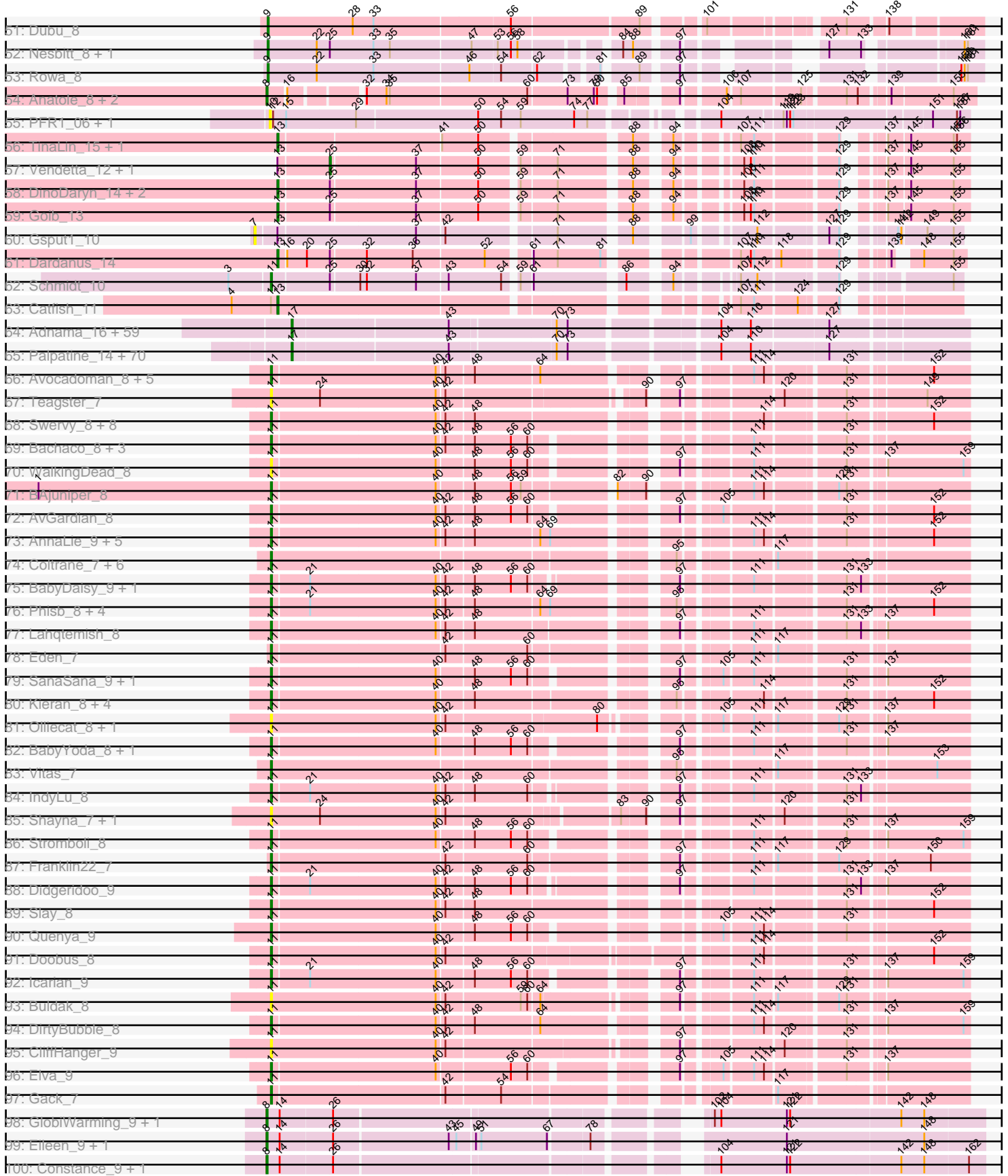


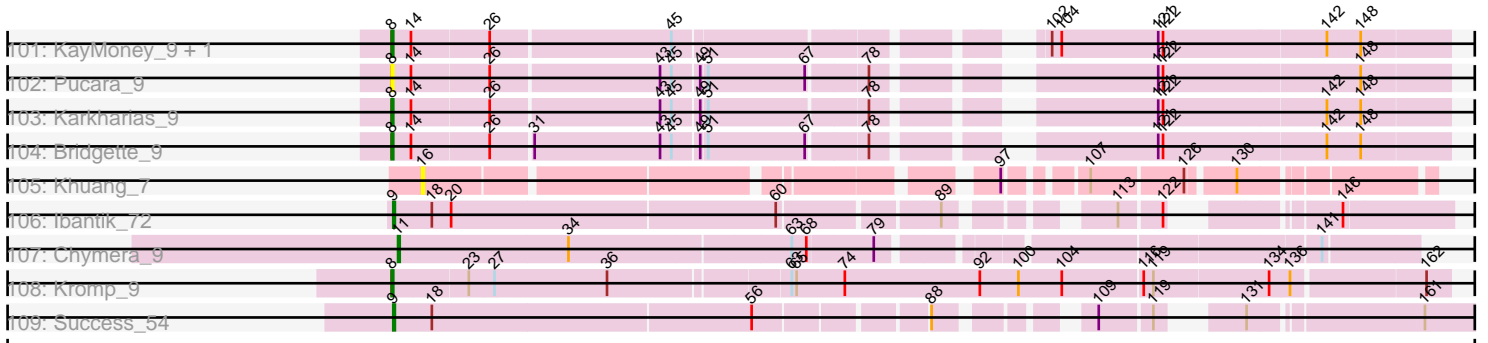
Pham 196216



Pham 196216



Pham 196216



Note: Tracks are now grouped by subcluster and scaled. Switching in subcluster is indicated by changes in track color. Track scale is now set by default to display the region 30 bp upstream of start 1 to 30 bp downstream of the last possible start. If this default region is judged to be packed too tightly with annotated starts, the track will be further scaled to only show that region of the ORF with annotated starts. This action will be indicated by adding "Zoomed" to the title. For starts, yellow indicates the location of called starts comprised solely of Glimmer/GeneMark auto-annotations, green indicates the location of called starts with at least 1 manual gene annotation.

Pham 196216 Report

This analysis was run 12/09/24 on database version 580.

Pham number 196216 has 358 members, 32 are drafts.

Phages represented in each track:

- Track 1 : Carpal_11, Wawa_11, Cholula_11, Kalizoi_11, Dino_11, Potatoes_11, Immaculata_11, Beethoven_11
- Track 2 : PinkFriday_7, Pumancara_7, Supakev_7, Maria1952_7
- Track 3 : Riovina_7, Eunoia_7
- Track 4 : Urla_7
- Track 5 : Greenhouse_11
- Track 6 : Makoto_7, Pterodactyl_7, Lucy_7
- Track 7 : Kittykat_7
- Track 8 : Lakshmi_11, GreenHearts_11, Joann_11, Albanese_11
- Track 9 : Korra_11, Zorro_11
- Track 10 : Fluke_11, Rozby_11
- Track 11 : Jumboset_11, RAP15_11, Riverdale_11, MeganNoll_11, Savage2526_11
- Track 12 : HunterDalle_7, Vulture_7
- Track 13 : Sergei_7, Temper16_7, Daiboju_7, KingBob_7, Herb_7
- Track 14 : Aledel_7, OMalley_7
- Track 15 : Bodacious_7, CristinaYang_7, Lasagna_7
- Track 16 : ChewChew_7, DrRobert_7, PitaDog_7, OurGirlNessie_7, Christian_7, Lennox_7, LilStuart_7
- Track 17 : Nubia_11, Oxyfrios_11
- Track 18 : AustinPowers_7, Chridison_7
- Track 19 : Nancia_7
- Track 20 : Gisselle_7, DreamTeam_7
- Track 21 : Moki_7, Bennie_7, HeadNerd_7
- Track 22 : Vallejo_11, Scuttle_11
- Track 23 : RcigaStruga_11, Huntingdon_11
- Track 24 : Huckleberry_7, EstebanJulior_7, MamaPearl_7
- Track 25 : TattModd_11, MrGloopy_11
- Track 26 : BigMack_7
- Track 27 : AppleCider_11, Litotes_11, PartyCup_11, CallieOMalley_11
- Track 28 : BrotherBLo_11
- Track 29 : Wayne_11, Suppi_11, Canowicakte_11
- Track 30 : Glenn_11
- Track 31 : WonderBoy_7
- Track 32 : Preamble_7
- Track 33 : Misaeng_11
- Track 34 : Abidatro_9, Galaxy_9

- Track 35 : Chickaboom_8, Vulpecula_9, Basilisk_9, Ruchi_9, Brynnie_9
- Track 36 : TaylorSipht_9
- Track 37 : Jamun_9
- Track 38 : Orcanus_9
- Track 39 : Eesa_9
- Track 40 : Polka_9, Jerole_10, Coral_9, Daob_10, Melons_10, Bedetta_10, Kepler_9, Colusalem_9, HannahPhantana_10, Amelia_10, Cote_10, Lunar_10
- Track 41 : Kuleana_9
- Track 42 : LittleTokyo_9
- Track 43 : Juno112_8
- Track 44 : Leona_8
- Track 45 : KHumphrey_8
- Track 46 : PhluffyCoco_8, RedFox_8
- Track 47 : Camara_8
- Track 48 : Andrew_9
- Track 49 : Renna12_9
- Track 50 : phiSASD1_29
- Track 51 : Dubu_8
- Track 52 : Nesbitt_8, AbbeyMikolon_8
- Track 53 : Rowa_8
- Track 54 : Anatole_8, B3_8, E1_8
- Track 55 : PFR1_06, PFR2_06
- Track 56 : TinaLin_15, Banquo_16
- Track 57 : Vendetta_12, Splinter_12
- Track 58 : DinoDaryn_14, Huffy_14, TZGordon_14
- Track 59 : Goib_13
- Track 60 : Gspu1_10
- Track 61 : Dardanus_14
- Track 62 : Schmidt_10
- Track 63 : Catfish_11
- Track 64 : Adnama_16, ShereKhan_16, Filch_15, Easy2Say_15, Hoonter_16, Czystczon1_15, Stank_16, StolenFromERC_16, Elite2014_13, Murphy_14, Hopey_15, Phrux_14, Lilac_16, BigBubba_14, Terminus_14, AmericanBeauty_16, Bench_16, Cjw1_14, Misfit_14, ChosenOne_13, Pumpkin_15, Highbury_15, Xandras_16, Wiggin_16, DrDrey_15, Elph10_15, Gemini_16, Porky_13, Tarkin_16, Gage_16, NoSleep_15, Paperbeatsrock_16, Petra64142_15, Lilizi_16, OrionPax_15, Pharsalus_15, Maxxinista_15, Stark_15, TBrady12_16, Moldemort_15, Kanye_16, Emmina_14, ChotaBhai_14, Lilpickle_13, Thresher_15, GoldenSpark_16, HanKaySha_15, RiverMonster_14, 244_15, Ukulele_14, Simpliphy_15, GooberAzure_16, Argent26_16, Nimrod_14, Youngblood_14, MadamMonkfish_14, Dumbo_14, JeTaime_16, Kimchi_16, Saints25_15
- Track 65 : Palpatine_14, Pat3_14, IHOP_14, Qualification_16, Balomoji_14, Dusk_14, Miniwave_15, Mindy_15, Mosby_14, FairyPath_15, Icee_14, MPhalcon_14, BaboJay_14, Sotrice96_15, NelitzaMV_15, Eureka_15, Bask21_14, Goldilocks_16, Contagion_14, Buck_14, Barbarian_14, Traaww1_13, Flypotenuse_13, Phaux_13, Amao_15, DoctorDiddles_15, Bruin_14, Willez_14, Command613_16, Gator_13, CrystalP_15, Marshmallow_15, Cookies_15, ShamWow_15, Teaspoon_14, Goku_15, Henry_15, ABCat_14, Toto_15, Holt_16, Murica_13, Policronamos_14, Inca_14, Daikon_13, xkcd_15, HufflyPuff_13, Nala_14, FireRed_14, StellaBean_15, Tomaszewski_14, Harella_13, Rimmer_14, Kostya_15, TeardropMSU_14, SirDuracell_14, Sassay_14, BugsBunny_12, Glexan_13, Rakim_16, MISSy_14, Manda_15, Myrale_15, YassJohnny_15, SophKB_15, Cactus_16, Phaja_14, BilboSwaggins_15, Asriel_14, PhatBacter_14, Tuco_15, BadStone_14

- Track 66 : Avocadoman_8, Johnathan_8, Albright_8, LimaBean_8, Arroyo_9, Abigail_8
- Track 67 : Teagster_7
- Track 68 : Swervy_8, Jovita_8, SarBear_8, QMacho_9, TukTuk_8, Nicky22_9, Cashington_8, Eula_8, Finalfrontier_9
- Track 69 : Bachaco_8, Celaena_8, FlameThrower_8, Katzastrophic_8
- Track 70 : WalkingDead_8
- Track 71 : BAjuniper_8
- Track 72 : AvGardian_8
- Track 73 : AnnaLie_9, SansAfet_8, Burritobowl_8, BelmontSKP_9, CroZenni_8, DickRichards_8
- Track 74 : Coltrane_7, Skylord_7, Clayda5_7, Rollins_7, Brahms_7, Armstrong_7, Bernstein_7
- Track 75 : BabyDaisy_9, Kate33_8
- Track 76 : Phisb_8, BubbaBear_8, Albedo_8, Lynlen_8, Kenzers_8
- Track 77 : Lahqtemish_8
- Track 78 : Eden_7
- Track 79 : SanaSana_9, Stoor_8
- Track 80 : Kieran_8, Rona_8, ChiliPepper_8, Sharkboy_8, Dismas_8
- Track 81 : Olliecat_8, Squircle_8
- Track 82 : BabyYoda_8, Loviatar_15
- Track 83 : Vitas_7
- Track 84 : IndyLu_8
- Track 85 : Shayna_7, SunnyD_7
- Track 86 : Stromboli_8
- Track 87 : Franklin22_7
- Track 88 : Didgeridoo_9
- Track 89 : Slay_8
- Track 90 : Quenya_9
- Track 91 : Doobus_8
- Track 92 : Icarian_9
- Track 93 : Buldak_8
- Track 94 : DirtyBubble_8
- Track 95 : CliffHanger_9
- Track 96 : Elva_9
- Track 97 : Gack_7
- Track 98 : GlobiWarming_9, Judy_9
- Track 99 : Eileen_9, Peas_9
- Track 100 : Constance_9, PeggyLeg03_9
- Track 101 : KayMoney_9, ChuckDuck_9
- Track 102 : Pucara_9
- Track 103 : Karkharias_9
- Track 104 : Bridgette_9
- Track 105 : Khuang_7
- Track 106 : Ibantik_72
- Track 107 : Chymera_9
- Track 108 : Kromp_9
- Track 109 : Success_54

Summary of Final Annotations (See graph section above for start numbers):

The start number called the most often in the published annotations is 17, it was called in 123 of the 326 non-draft genes in the pham.

Genes that call this "Most Annotated" start:

- 244_15, ABCat_14, Adnama_16, Amao_15, AmericanBeauty_16, Argent26_16, Asriel_14, BaboJay_14, BadStone_14, Balomoji_14, Barbarian_14, Bask21_14, Bench_16, BigBubba_14, BilboSwaggins_15, Bruin_14, Buck_14, BugsBunny_12, Cactus_16, ChosenOne_13, ChotaBhai_14, Cjw1_14, Command613_16, Contagion_14, Cookies_15, CrystalP_15, Czyszczo1_15, Daikon_13, DoctorDiddles_15, DrDrey_15, Dumbo_14, Dusk_14, Easy2Say_15, Elite2014_13, Elph10_15, Emmina_14, Eureka_15, FairyPath_15, Filch_15, FireRed_14, Flypotenuse_13, Gage_16, Gator_13, Gemini_16, Glexan_13, Goku_15, GoldenSpark_16, Goldilocks_16, GooberAzure_16, HanKaySha_15, Harella_13, Henry_15, Highbury_15, Holt_16, Hoonter_16, Hopey_15, HufflyPuff_13, IHOP_14, Icee_14, Inca_14, JeTaime_16, Kanye_16, Kimchi_16, Kostya_15, Lilac_16, Lilizi_16, Lilpickle_13, MISSy_14, MPhalcon_14, MadamMonkfish_14, Manda_15, Marshmallow_15, Maxxinista_15, Mindy_15, Miniwave_15, Misfit_14, Moldemort_15, Mosby_14, Murica_13, Murphy_14, Myrale_15, Nala_14, NelitzaMV_15, Nimrod_14, NoSleep_15, OrionPax_15, Palpatine_14, Paperbeatsrock_16, Pat3_14, Petra64142_15, Phaja_14, Pharsalus_15, PhatBacter_14, Phaux_13, Phrux_14, Policronamos_14, Porky_13, Pumpkin_15, Quallification_16, Rakim_16, Rimmer_14, RiverMonster_14, Saints25_15, Sassay_14, ShamWow_15, ShereKhan_16, Simpliphy_15, SirDuracell_14, SophKB_15, Sotrice96_15, Stank_16, Stark_15, StellaBean_15, StolenFromERC_16, TBrady12_16, Tarkin_16, TeardropMSU_14, Teaspoon_14, Terminus_14, Thresher_15, Tomaszewski_14, Toto_15, Traaww1_13, Tuco_15, Ukulele_14, Wiggin_16, Willez_14, Xandras_16, YassJohnny_15, Youngblood_14, xkcd_15,

Genes that have the "Most Annotated" start but do not call it:

-

Genes that do not have the "Most Annotated" start:

- AbbeyMikolon_8, Abidatro_9, Abigail_8, Albanese_11, Albedo_8, Albright_8, Aledel_7, Amelia_10, Anatole_8, Andrew_9, AnnaLie_9, AppleCider_11, Armstrong_7, Arroyo_9, AustinPowers_7, AvGardian_8, Avocadoman_8, B3_8, BAjuniper_8, BabyDaisy_9, BabyYoda_8, Bachaco_8, Banquo_16, Basilisk_9, Bedetta_10, Beethoven_11, BelmontSKP_9, Bennie_7, Bernstein_7, BigMack_7, Bodacious_7, Brahms_7, Bridgette_9, BrotherBLo_11, Brynnie_9, BubbaBear_8, Buldak_8, Burritobowl_8, CallieOMalley_11, Camara_8, Canowicakte_11, Carpal_11, Cashington_8, Catfish_11, Celaena_8, ChewChew_7, Chickaboom_8, ChiliPepper_8, Cholula_11, Chridison_7, Christian_7, ChuckDuck_9, Chymera_9, Clayda5_7, CliffHanger_9, Coltrane_7, Colusalem_9, Constance_9, Coral_9, Cote_10, CristinaYang_7, CroZenni_8, Daiboju_7, Daob_10, Dardanus_14, DickRichards_8, Didgeridoo_9, DinoDaryn_14, Dino_11, DirtyBubble_8, Dismas_8, Doobus_8, DrRobert_7, DreamTeam_7, Dubu_8, E1_8, Eden_7, Eesa_9, Eileen_9, Elva_9, EstebanJulior_7, Eula_8, Eunoia_7, Finalfrontier_9, FlameThrower_8, Fluke_11, Franklin22_7, Gack_7, Galaxy_9, Gisselle_7, Glenn_11, GlobiWarming_9, Goib_13, GreenHearts_11, Greenhouse_11, Gsput1_10, HannahPhantana_10, HeadNerd_7, Herb_7, Huckleberry_7, Huffy_14, HunterDalle_7, Huntingdon_11, Ibantik_72, Icarian_9, Immaculata_11, IndyLu_8, Jamun_9, Jerole_10, Joann_11, Johnathan_8, Jovita_8, Judy_9, Jumboset_11, Juno112_8, KHumphrey_8, Kalizoi_11, Karkharias_9, Kate33_8, Katzastrophic_8, KayMoney_9, Kenzers_8,

Kepler_9, Khuang_7, Kieran_8, KingBob_7, Kittykat_7, Korra_11, Kromp_9, Kuleana_9, Lahqtemish_8, Lakshmi_11, Lasagna_7, Lennox_7, Leona_8, LilStuart_7, LimaBean_8, Litotes_11, LittleTokyo_9, Loviatar_15, Lucy_7, Lunar_10, Lynlen_8, Makoto_7, MamaPearl_7, Maria1952_7, MeganNoll_11, Melons_10, Misaeng_11, Moki_7, MrGloopy_11, Nancia_7, Nesbitt_8, Nicky22_9, Nubia_11, OMalley_7, Olliecat_8, Orcanus_9, OurGirlNessie_7, Oxynfrius_11, PFR1_06, PFR2_06, PartyCup_11, Peas_9, PeggyLeg03_9, Phisb_8, PhluffyCoco_8, PinkFriday_7, PitaDog_7, Polka_9, Potatoes_11, Preamble_7, Pterodactyl_7, Pucara_9, Pumancara_7, QMacho_9, Quenya_9, RAP15_11, RcigaStruga_11, RedFox_8, Renna12_9, Riovina_7, Riverdale_11, Rollins_7, Rona_8, Rowa_8, Rozby_11, Ruchi_9, SanaSana_9, SansAfet_8, SarBear_8, Savage2526_11, Schmidt_10, Scuttle_11, Sergei_7, Sharkboy_8, Shayna_7, Skylord_7, Slay_8, Splinter_12, Squircle_8, Stoor_8, Stromboli_8, Success_54, SunnyD_7, Supakev_7, Suppi_11, Swervy_8, TZGordon_14, TattModd_11, TaylorSipht_9, Teagster_7, Temper16_7, TinaLin_15, TukTuk_8, Urla_7, Vallejo_11, Vendetta_12, Vitas_7, Vulpecula_9, Vulture_7, WalkingDead_8, Wawa_11, Wayne_11, WonderBoy_7, Zorro_11, phiSASD1_29,

Summary by start number:

Start 2:

- Found in 33 of 358 (9.2%) of genes in pham
- Manual Annotations of this start: 28 of 326
- Called 100.0% of time when present
- Phage (with cluster) where this start called: Abidatro_9 (AS1), Amelia_10 (AS2), Andrew_9 (AS3), Basilisk_9 (AS1), Bedetta_10 (AS2), Brynnie_9 (AS1), Camara_8 (AS3), Chickaboom_8 (AS1), Colusalem_9 (AS2), Coral_9 (AS2), Cote_10 (AS2), Daob_10 (AS2), Eesa_9 (AS1), Galaxy_9 (AS1), HannahPhantana_10 (AS2), Jamun_9 (AS1), Jerole_10 (AS2), Juno112_8 (AS3), KHumphrey_8 (AS3), Kepler_9 (AS2), Kuleana_9 (AS2), Leona_8 (AS3), LittleTokyo_9 (AS2), Lunar_10 (AS2), Melons_10 (AS2), Orcanus_9 (AS1), PhluffyCoco_8 (AS3), Polka_9 (AS2), RedFox_8 (AS3), Renna12_9 (AS3), Ruchi_9 (AS1), TaylorSipht_9 (AS1), Vulpecula_9 (AS1),

Start 5:

- Found in 77 of 358 (21.5%) of genes in pham
- Manual Annotations of this start: 52 of 326
- Called 67.5% of time when present
- Phage (with cluster) where this start called: Albanese_11 (AK), Aledel_7 (AK), AustinPowers_7 (AK), Beethoven_11 (AK), Bennie_7 (AK), BrotherBLo_11 (AK), Carpal_11 (AK), ChewChew_7 (AK), Cholula_11 (AK), Chridison_7 (AK), Christian_7 (AK), Dino_11 (AK), DrRobert_7 (AK), Fluke_11 (AK), GreenHearts_11 (AK), HeadNerd_7 (AK), HunterDalle_7 (AK), Huntingdon_11 (AK), Immaculata_11 (AK), Joann_11 (AK), Jumboset_11 (AK), Kalizoi_11 (AK), Kittykat_7 (AK), Lakshmi_11 (AK), Lennox_7 (AK), LilStuart_7 (AK), Lucy_7 (AK), Makoto_7 (AK), Maria1952_7 (AK), MeganNoll_11 (AK), Misaeng_11 (AK), Moki_7 (AK), MrGloopy_11 (AK), Nancia_7 (AK), OMalley_7 (AK), OurGirlNessie_7 (AK), PinkFriday_7 (AK), PitaDog_7 (AK), Potatoes_11 (AK), Preamble_7 (AK), Pterodactyl_7 (AK), Pumancara_7 (AK), RAP15_11 (AK), RcigaStruga_11 (AK), Riverdale_11 (AK), Rozby_11 (AK), Savage2526_11 (AK), Supakev_7 (AK), TattModd_11 (AK), Urla_7 (AK), Vulture_7 (AK), Wawa_11 (AK),

Start 6:

- Found in 7 of 358 (2.0%) of genes in pham
- Manual Annotations of this start: 6 of 326
- Called 100.0% of time when present
- Phage (with cluster) where this start called: AppleCider_11 (AK), CallieOMalley_11 (AK), Canowicakte_11 (AK), Litotes_11 (AK), PartyCup_11 (AK), Suppi_11 (AK), Wayne_11 (AK),

Start 7:

- Found in 78 of 358 (21.8%) of genes in pham
- Manual Annotations of this start: 25 of 326
- Called 33.3% of time when present
- Phage (with cluster) where this start called: BigMack_7 (AK), Bodacious_7 (AK), CristinaYang_7 (AK), Daiboju_7 (AK), DreamTeam_7 (AK), EstebanJulior_7 (AK), Eunoia_7 (AK), Gisselle_7 (AK), Glenn_11 (AK), Greenhouse_11 (AK), Gspu1_10 (CU2), Herb_7 (AK), Huckleberry_7 (AK), KingBob_7 (AK), Korra_11 (AK), Lasagna_7 (AK), MamaPearl_7 (AK), Nubia_11 (AK), Oxyntrius_11 (AK), Riovina_7 (AK), Scuttle_11 (AK), Sergei_7 (AK), Temper16_7 (AK), Vallejo_11 (AK), WonderBoy_7 (AK), Zorro_11 (AK),

Start 8:

- Found in 15 of 358 (4.2%) of genes in pham
- Manual Annotations of this start: 13 of 326
- Called 100.0% of time when present
- Phage (with cluster) where this start called: Anatole_8 (BV), B3_8 (BV), Bridgette_9 (FA), ChuckDuck_9 (FA), Constance_9 (FA), E1_8 (BV), Eileen_9 (FA), GlobiWarming_9 (FA), Judy_9 (FA), Karkharias_9 (FA), KayMoney_9 (FA), Kromp_9 (singleton), Peas_9 (FA), PeggyLeg03_9 (FA), Pucara_9 (FA),

Start 9:

- Found in 7 of 358 (2.0%) of genes in pham
- Manual Annotations of this start: 6 of 326
- Called 100.0% of time when present
- Phage (with cluster) where this start called: AbbeyMikolon_8 (BL), Dubu_8 (BJ), Ibantik_72 (singleton), Nesbitt_8 (BL), Rowa_8 (BL), Success_54 (singleton), phiSASD1_29 (BJ),

Start 10:

- Found in 2 of 358 (0.6%) of genes in pham
- No Manual Annotations of this start.
- Called 100.0% of time when present
- Phage (with cluster) where this start called: PFR1_06 (BX), PFR2_06 (BX),

Start 11:

- Found in 75 of 358 (20.9%) of genes in pham
- Manual Annotations of this start: 63 of 326
- Called 98.7% of time when present
- Phage (with cluster) where this start called: Abigail_8 (EB), Albedo_8 (EB), Albright_8 (EB), AnnaLie_9 (EB), Armstrong_7 (EB), Arroyo_9 (EB), AvGardian_8 (EB), Avocadoman_8 (EB), BAjuniper_8 (EB), BabyDaisy_9 (EB), BabyYoda_8 (EB), Bachaco_8 (EB), BelmontSKP_9 (EB), Bernstein_7 (EB), Brahms_7 (EB), BubbaBear_8 (EB), Buldak_8 (EB), Burritobowl_8 (EB), Cashington_8 (EB), Celaena_8 (EB), ChiliPepper_8 (EB), Chymera_9 (singleton), Clayda5_7 (EB), CliffHanger_9 (EB), Coltrane_7 (EB), CroZenni_8 (EB), DickRichards_8 (EB),

Didgeridoo_9 (EB), DirtyBubble_8 (EB), Dismas_8 (EB), Doobus_8 (EB), Eden_7 (EB), Elva_9 (EB), Eula_8 (EB), Finalfrontier_9 (EB), FlameThrower_8 (EB), Franklin22_7 (EB), Gack_7 (EB), Icarian_9 (EB), IndyLu_8 (EB), Johnathan_8 (EB), Jovita_8 (EB), Kate33_8 (EB), Katzastrophic_8 (EB), Kenzers_8 (EB), Kieran_8 (EB), Lahqtemish_8 (EB), LimaBean_8 (EB), Loviatar_15 (EB), Lynlen_8 (EB), Nicky22_9 (EB), Olliecat_8 (EB), Phisb_8 (EB), QMacho_9 (EB), Quenya_9 (EB), Rollins_7 (EB), Rona_8 (EB), SanaSana_9 (EB), SansAfet_8 (EB), SarBear_8 (EB), Schmidt_10 (CU4), Sharkboy_8 (EB), Shayna_7 (EB), Skylord_7 (EB), Slay_8 (EB), Squirrel_8 (EB), Stoor_8 (EB), Stromboli_8 (EB), SunnyD_7 (EB), Swervy_8 (EB), Teagster_7 (EB), TukTuk_8 (EB), Vitas_7 (EB), WalkingDead_8 (EB),

Start 13:

- Found in 11 of 358 (3.1%) of genes in pham
- Manual Annotations of this start: 8 of 326
- Called 72.7% of time when present
- Phage (with cluster) where this start called: Banquo_16 (CU1), Catfish_11 (CU5), Dardanus_14 (CU3), DinoDaryn_14 (CU1), Goib_13 (CU1), Huffy_14 (CU1), TZGordon_14 (CU1), TinaLin_15 (CU1),

Start 16:

- Found in 17 of 358 (4.7%) of genes in pham
- No Manual Annotations of this start.
- Called 5.9% of time when present
- Phage (with cluster) where this start called: Khuang_7 (UNK),

Start 17:

- Found in 131 of 358 (36.6%) of genes in pham
- Manual Annotations of this start: 123 of 326
- Called 100.0% of time when present
- Phage (with cluster) where this start called: 244_15 (E), ABCat_14 (E), Adnama_16 (E), Amao_15 (E), AmericanBeauty_16 (E), Argent26_16 (E), Asriel_14 (E), BaboJay_14 (E), BadStone_14 (E), Balomoji_14 (E), Barbarian_14 (E), Bask21_14 (E), Bench_16 (E), BigBubba_14 (E), BilboSwaggins_15 (E), Bruin_14 (E), Buck_14 (E), BugsBunny_12 (E), Cactus_16 (E), ChosenOne_13 (E), ChotaBhai_14 (E), Cjw1_14 (E), Command613_16 (E), Contagion_14 (E), Cookies_15 (E), CrystalP_15 (E), Czyszczonek_15 (E), Daikon_13 (E), DoctorDiddles_15 (E), DrDrey_15 (E), Dumbo_14 (E), Dusk_14 (E), Easy2Say_15 (E), Elite2014_13 (E), Elph10_15 (E), Emmina_14 (E), Eureka_15 (E), FairyPath_15 (E), Filch_15 (E), FireRed_14 (E), Flypotenuse_13 (E), Gage_16 (E), Gator_13 (E), Gemini_16 (E), Glexan_13 (E), Goku_15 (E), GoldenSpark_16 (E), Goldilocks_16 (E), GooberAzure_16 (E), HanKaySha_15 (E), Harella_13 (E), Henry_15 (E), Highbury_15 (E), Holt_16 (E), Hoonter_16 (E), Hopey_15 (E), HuffyPuff_13 (E), IHOP_14 (E), Icee_14 (E), Inca_14 (E), JeTaime_16 (E), Kanye_16 (E), Kimchi_16 (E), Kostya_15 (E), Lilac_16 (E), Lilizi_16 (E), Lilpickle_13 (E), MISSy_14 (E), MPhalcon_14 (E), MadamMonkfish_14 (E), Manda_15 (E), Marshmallow_15 (E), Maxxinista_15 (E), Mindy_15 (E), Miniwave_15 (E), Misfit_14 (E), Moldemort_15 (E), Mosby_14 (E), Murica_13 (E), Murphy_14 (E), Myrale_15 (E), Nala_14 (E), NelitzaMV_15 (E), Nimrod_14 (E), NoSleep_15 (E), OrionPax_15 (E), Palpatine_14 (E), Paperbeatsrock_16 (E), Pat3_14 (E), Petra64142_15 (E), Phaja_14 (E), Pharsalus_15 (E), PhatBacter_14 (E), Phaux_13 (E), Phrux_14 (E), Policronamos_14 (E), Porky_13 (E), Pumpkin_15 (E), Quallification_16 (E), Rakim_16 (E), Rimmer_14 (E), RiverMonster_14 (E), Saints25_15 (E), Sassay_14 (E), ShamWow_15 (E), ShereKhan_16 (E), Simpliphy_15 (E), SirDuracell_14 (E), SophKB_15 (E), Sotrice96_15 (E), Stank_16

(E), Stark_15 (E), StellaBean_15 (E), StolenFromERC_16 (E), TBrady12_16 (E), Tarkin_16 (E), TeardropMSU_14 (E), Teaspoon_14 (E), Terminus_14 (E), Thresher_15 (E), Tomaszewski_14 (E), Toto_15 (E), Traaww1_13 (E), Tuco_15 (E), Ukulele_14 (E), Wiggin_16 (E), Willez_14 (E), Xandras_16 (E), YassJohnny_15 (E), Youngblood_14 (E), xkcd_15 (E),

Start 25:

- Found in 12 of 358 (3.4%) of genes in pham
- Manual Annotations of this start: 2 of 326
- Called 16.7% of time when present
- Phage (with cluster) where this start called: Splinter_12 (CU1), Vendetta_12 (CU1),

Summary by clusters:

There are 18 clusters represented in this pham: AS3, AS2, AS1, CU4, E, CU2, CU1, UNK, BL, AK, singleton, BJ, EB, FA, BV, CU3, CU5, BX,

Info for manual annotations of cluster AK:

- Start number 5 was manually annotated 52 times for cluster AK.
- Start number 6 was manually annotated 6 times for cluster AK.
- Start number 7 was manually annotated 25 times for cluster AK.

Info for manual annotations of cluster AS1:

- Start number 2 was manually annotated 11 times for cluster AS1.

Info for manual annotations of cluster AS2:

- Start number 2 was manually annotated 11 times for cluster AS2.

Info for manual annotations of cluster AS3:

- Start number 2 was manually annotated 6 times for cluster AS3.

Info for manual annotations of cluster BJ:

- Start number 9 was manually annotated 1 time for cluster BJ.

Info for manual annotations of cluster BL:

- Start number 9 was manually annotated 3 times for cluster BL.

Info for manual annotations of cluster BV:

- Start number 8 was manually annotated 3 times for cluster BV.

Info for manual annotations of cluster CU1:

- Start number 13 was manually annotated 6 times for cluster CU1.
- Start number 25 was manually annotated 2 times for cluster CU1.

Info for manual annotations of cluster CU3:

- Start number 13 was manually annotated 1 time for cluster CU3.

Info for manual annotations of cluster CU4:

- Start number 11 was manually annotated 1 time for cluster CU4.

Info for manual annotations of cluster CU5:

- Start number 13 was manually annotated 1 time for cluster CU5.

Info for manual annotations of cluster E:

- Start number 17 was manually annotated 123 times for cluster E.

Info for manual annotations of cluster EB:

- Start number 11 was manually annotated 61 times for cluster EB.

Info for manual annotations of cluster FA:

- Start number 8 was manually annotated 9 times for cluster FA.

Gene Information:

Gene: 244_15 Start: 8901, Stop: 9467, Start Num: 17

Candidate Starts for 244_15:

(Start: 17 @8901 has 123 MA's), (43, 9039), (70, 9129), (73, 9138), (104, 9258), (110, 9285), (127, 9351),

Gene: ABCat_14 Start: 9678, Stop: 10244, Start Num: 17

Candidate Starts for ABCat_14:

(Start: 17 @9678 has 123 MA's), (43, 9816), (70, 9906), (73, 9915), (104, 10035), (110, 10062), (127, 10128),

Gene: AbbeyMikolon_8 Start: 6661, Stop: 7194, Start Num: 9

Candidate Starts for AbbeyMikolon_8:

(Start: 9 @6661 has 6 MA's), (22, 6706), (Start: 25 @6718 has 2 MA's), (33, 6757), (35, 6772), (47, 6844), (53, 6865), (56, 6877), (58, 6883), (84, 6955), (88, 6964), (97, 6997), (127, 7078), (133, 7105), (160, 7177), (161, 7180),

Gene: Abidatro_9 Start: 7106, Stop: 7693, Start Num: 2

Candidate Starts for Abidatro_9:

(Start: 2 @7106 has 28 MA's), (38, 7286), (54, 7352), (59, 7370), (67, 7391), (72, 7406), (79, 7427), (124, 7568), (129, 7598),

Gene: Abigail_8 Start: 6884, Stop: 7444, Start Num: 11

Candidate Starts for Abigail_8:

(Start: 11 @6884 has 63 MA's), (40, 7031), (42, 7037), (48, 7061), (64, 7118), (111, 7271), (114, 7280), (131, 7343), (152, 7412),

Gene: Adnama_16 Start: 9133, Stop: 9699, Start Num: 17

Candidate Starts for Adnama_16:

(Start: 17 @9133 has 123 MA's), (43, 9271), (70, 9361), (73, 9370), (104, 9490), (110, 9517), (127, 9583),

Gene: Albanese_11 Start: 9268, Stop: 9846, Start Num: 5

Candidate Starts for Albanese_11:

(Start: 5 @9268 has 52 MA's), (Start: 7 @9277 has 25 MA's), (19, 9322), (39, 9439), (42, 9451), (44, 9457), (59, 9520), (70, 9547), (97, 9631), (99, 9637), (107, 9667), (124, 9715), (129, 9745), (156, 9838),

Gene: Albedo_8 Start: 6756, Stop: 7316, Start Num: 11

Candidate Starts for Albedo_8:

(Start: 11 @6756 has 63 MA's), (21, 6789), (40, 6903), (42, 6909), (48, 6933), (64, 6990), (69, 6999), (95, 7089), (131, 7215), (152, 7284),

Gene: Albright_8 Start: 6765, Stop: 7325, Start Num: 11

Candidate Starts for Albright_8:

(Start: 11 @6765 has 63 MA's), (40, 6912), (42, 6918), (48, 6942), (64, 6999), (111, 7152), (114, 7161), (131, 7224), (152, 7293),

Gene: Aledel_7 Start: 6342, Stop: 6923, Start Num: 5

Candidate Starts for Aledel_7:

(Start: 5 @6342 has 52 MA's), (Start: 7 @6351 has 25 MA's), (19, 6396), (28, 6441), (39, 6513), (42, 6525), (44, 6531), (70, 6621), (79, 6651), (95, 6702), (99, 6711), (114, 6762), (115, 6765), (120, 6777), (124, 6789), (129, 6819), (137, 6852), (156, 6912),

Gene: Amao_15 Start: 8883, Stop: 9449, Start Num: 17

Candidate Starts for Amao_15:

(Start: 17 @8883 has 123 MA's), (43, 9021), (70, 9111), (73, 9120), (104, 9240), (110, 9267), (127, 9333),

Gene: Amelia_10 Start: 7302, Stop: 7892, Start Num: 2

Candidate Starts for Amelia_10:

(Start: 2 @7302 has 28 MA's), (16, 7356), (38, 7482), (55, 7551), (57, 7560), (59, 7566), (67, 7587), (75, 7614), (79, 7626), (93, 7671), (124, 7767), (129, 7797), (137, 7830),

Gene: AmericanBeauty_16 Start: 9130, Stop: 9696, Start Num: 17

Candidate Starts for AmericanBeauty_16:

(Start: 17 @9130 has 123 MA's), (43, 9268), (70, 9358), (73, 9367), (104, 9487), (110, 9514), (127, 9580),

Gene: Anatole_8 Start: 6423, Stop: 6980, Start Num: 8

Candidate Starts for Anatole_8:

(Start: 8 @6423 has 13 MA's), (16, 6438), (32, 6495), (34, 6513), (35, 6516), (60, 6639), (73, 6672), (79, 6696), (80, 6699), (85, 6714), (97, 6750), (106, 6783), (107, 6792), (125, 6843), (131, 6876), (132, 6885), (139, 6906), (155, 6960),

Gene: Andrew_9 Start: 7093, Stop: 7680, Start Num: 2

Candidate Starts for Andrew_9:

(Start: 2 @7093 has 28 MA's), (55, 7342), (57, 7351), (59, 7357), (67, 7378), (72, 7393), (76, 7408), (79, 7414), (103, 7489), (124, 7555), (128, 7582), (129, 7585),

Gene: AnnaLie_9 Start: 7111, Stop: 7671, Start Num: 11

Candidate Starts for AnnaLie_9:

(Start: 11 @7111 has 63 MA's), (40, 7258), (42, 7264), (48, 7288), (64, 7345), (69, 7354), (111, 7498), (114, 7507), (131, 7570), (152, 7639),

Gene: AppleCider_11 Start: 9230, Stop: 9802, Start Num: 6

Candidate Starts for AppleCider_11:

(Start: 6 @9230 has 6 MA's), (39, 9392), (42, 9404), (44, 9410), (54, 9455), (59, 9473), (97, 9584), (99, 9590), (124, 9668), (129, 9698), (142, 9743), (143, 9746), (154, 9788), (156, 9791),

Gene: Argent26_16 Start: 9133, Stop: 9699, Start Num: 17

Candidate Starts for Argent26_16:

(Start: 17 @9133 has 123 MA's), (43, 9271), (70, 9361), (73, 9370), (104, 9490), (110, 9517), (127, 9583),

Gene: Armstrong_7 Start: 6533, Stop: 7093, Start Num: 11

Candidate Starts for Armstrong_7:

(Start: 11 @6533 has 63 MA's), (95, 6866), (117, 6938),

Gene: Arroyo_9 Start: 7235, Stop: 7795, Start Num: 11

Candidate Starts for Arroyo_9:

(Start: 11 @7235 has 63 MA's), (40, 7382), (42, 7388), (48, 7412), (64, 7469), (111, 7622), (114, 7631), (131, 7694), (152, 7763),

Gene: Asriel_14 Start: 8550, Stop: 9116, Start Num: 17

Candidate Starts for Asriel_14:

(Start: 17 @8550 has 123 MA's), (43, 8688), (70, 8778), (73, 8787), (104, 8907), (110, 8934), (127, 9000),

Gene: AustinPowers_7 Start: 6343, Stop: 6924, Start Num: 5

Candidate Starts for AustinPowers_7:

(Start: 5 @6343 has 52 MA's), (Start: 7 @6352 has 25 MA's), (19, 6397), (28, 6442), (39, 6514), (42, 6526), (44, 6532), (59, 6595), (64, 6610), (70, 6622), (72, 6631), (79, 6652), (95, 6703), (99, 6712), (114, 6763), (115, 6766), (120, 6778), (124, 6790), (129, 6820), (137, 6853), (156, 6913),

Gene: AvGardian_8 Start: 6822, Stop: 7373, Start Num: 11

Candidate Starts for AvGardian_8:

(Start: 11 @6822 has 63 MA's), (40, 6969), (42, 6975), (48, 6999), (56, 7032), (60, 7047), (97, 7149), (105, 7176), (131, 7272), (152, 7341),

Gene: Avocadoman_8 Start: 6823, Stop: 7383, Start Num: 11

Candidate Starts for Avocadoman_8:

(Start: 11 @6823 has 63 MA's), (40, 6970), (42, 6976), (48, 7000), (64, 7057), (111, 7210), (114, 7219), (131, 7282), (152, 7351),

Gene: B3_8 Start: 6423, Stop: 6980, Start Num: 8

Candidate Starts for B3_8:

(Start: 8 @6423 has 13 MA's), (16, 6438), (32, 6495), (34, 6513), (35, 6516), (60, 6639), (73, 6672), (79, 6696), (80, 6699), (85, 6714), (97, 6750), (106, 6783), (107, 6792), (125, 6843), (131, 6876), (132, 6885), (139, 6906), (155, 6960),

Gene: BAjuniper_8 Start: 6709, Stop: 7266, Start Num: 11

Candidate Starts for BAjuniper_8:

(1, 6496), (Start: 11 @6709 has 63 MA's), (40, 6856), (48, 6886), (56, 6919), (59, 6928), (82, 7000), (90, 7024), (111, 7093), (114, 7102), (129, 7159), (131, 7165),

Gene: BaboJay_14 Start: 9212, Stop: 9778, Start Num: 17

Candidate Starts for BaboJay_14:

(Start: 17 @9212 has 123 MA's), (43, 9350), (70, 9440), (73, 9449), (104, 9569), (110, 9596), (127, 9662),

Gene: BabyDaisy_9 Start: 6993, Stop: 7544, Start Num: 11

Candidate Starts for BabyDaisy_9:

(Start: 11 @6993 has 63 MA's), (21, 7026), (40, 7140), (42, 7146), (48, 7170), (56, 7203), (60, 7218), (97, 7320), (111, 7371), (131, 7443), (133, 7455),

Gene: BabyYoda_8 Start: 7015, Stop: 7566, Start Num: 11

Candidate Starts for BabyYoda_8:

(Start: 11 @7015 has 63 MA's), (40, 7162), (48, 7192), (56, 7225), (60, 7240), (97, 7342), (111, 7393), (131, 7465), (137, 7492),

Gene: Bachaco_8 Start: 6906, Stop: 7457, Start Num: 11

Candidate Starts for Bachaco_8:

(Start: 11 @6906 has 63 MA's), (40, 7053), (42, 7059), (48, 7083), (56, 7116), (60, 7131), (111, 7284), (131, 7356),

Gene: BadStone_14 Start: 9678, Stop: 10244, Start Num: 17

Candidate Starts for BadStone_14:

(Start: 17 @9678 has 123 MA's), (43, 9816), (70, 9906), (73, 9915), (104, 10035), (110, 10062), (127, 10128),

Gene: Balomoji_14 Start: 9412, Stop: 9978, Start Num: 17

Candidate Starts for Balomoji_14:

(Start: 17 @9412 has 123 MA's), (43, 9550), (70, 9640), (73, 9649), (104, 9769), (110, 9796), (127, 9862),

Gene: Banquo_16 Start: 9976, Stop: 10500, Start Num: 13

Candidate Starts for Banquo_16:

(Start: 13 @9976 has 8 MA's), (41, 10117), (50, 10150), (88, 10267), (94, 10291), (107, 10333), (111, 10345), (129, 10411), (137, 10429), (145, 10447), (155, 10486), (156, 10489),

Gene: Barbarian_14 Start: 8550, Stop: 9116, Start Num: 17

Candidate Starts for Barbarian_14:

(Start: 17 @8550 has 123 MA's), (43, 8688), (70, 8778), (73, 8787), (104, 8907), (110, 8934), (127, 9000),

Gene: Basilisk_9 Start: 7430, Stop: 8017, Start Num: 2

Candidate Starts for Basilisk_9:

(Start: 2 @7430 has 28 MA's), (38, 7610), (54, 7676), (57, 7688), (59, 7694), (67, 7715), (72, 7730), (79, 7751), (124, 7892), (129, 7922),

Gene: Bask21_14 Start: 8345, Stop: 8911, Start Num: 17

Candidate Starts for Bask21_14:

(Start: 17 @8345 has 123 MA's), (43, 8483), (70, 8573), (73, 8582), (104, 8702), (110, 8729), (127, 8795),

Gene: Bedetta_10 Start: 7302, Stop: 7892, Start Num: 2

Candidate Starts for Bedetta_10:

(Start: 2 @7302 has 28 MA's), (16, 7356), (38, 7482), (55, 7551), (57, 7560), (59, 7566), (67, 7587), (75, 7614), (79, 7626), (93, 7671), (124, 7767), (129, 7797), (137, 7830),

Gene: Beethoven_11 Start: 9184, Stop: 9762, Start Num: 5

Candidate Starts for Beethoven_11:

(Start: 5 @9184 has 52 MA's), (Start: 7 @9193 has 25 MA's), (19, 9238), (42, 9367), (44, 9373), (54, 9418), (59, 9436), (64, 9451), (70, 9463), (95, 9544), (97, 9547), (99, 9553), (114, 9604), (115, 9607), (120, 9619), (124, 9631), (129, 9661), (135, 9682), (142, 9706), (152, 9736), (154, 9751), (156, 9754),

Gene: BelmontSKP_9 Start: 7111, Stop: 7671, Start Num: 11

Candidate Starts for BelmontSKP_9:

(Start: 11 @7111 has 63 MA's), (40, 7258), (42, 7264), (48, 7288), (64, 7345), (69, 7354), (111, 7498), (114, 7507), (131, 7570), (152, 7639),

Gene: Bench_16 Start: 9006, Stop: 9572, Start Num: 17

Candidate Starts for Bench_16:

(Start: 17 @9006 has 123 MA's), (43, 9144), (70, 9234), (73, 9243), (104, 9363), (110, 9390), (127, 9456),

Gene: Bennie_7 Start: 6329, Stop: 6907, Start Num: 5

Candidate Starts for Bennie_7:

(Start: 5 @6329 has 52 MA's), (Start: 7 @6338 has 25 MA's), (19, 6383), (42, 6512), (44, 6518), (59, 6581), (70, 6608), (97, 6692), (99, 6698), (114, 6749), (115, 6752), (120, 6764), (124, 6776), (129, 6806), (142, 6851), (152, 6881), (154, 6896), (156, 6899),

Gene: Bernstein_7 Start: 6593, Stop: 7153, Start Num: 11

Candidate Starts for Bernstein_7:

(Start: 11 @6593 has 63 MA's), (95, 6926), (117, 6998),

Gene: BigBubba_14 Start: 8389, Stop: 8955, Start Num: 17

Candidate Starts for BigBubba_14:

(Start: 17 @8389 has 123 MA's), (43, 8527), (70, 8617), (73, 8626), (104, 8746), (110, 8773), (127, 8839),

Gene: BigMack_7 Start: 6338, Stop: 6907, Start Num: 7

Candidate Starts for BigMack_7:

(Start: 5 @6329 has 52 MA's), (Start: 7 @6338 has 25 MA's), (19, 6383), (42, 6512), (44, 6518), (59, 6581), (67, 6602), (70, 6608), (97, 6692), (99, 6698), (114, 6749), (115, 6752), (120, 6764), (124, 6776), (129, 6806), (142, 6851), (152, 6881), (154, 6896), (156, 6899),

Gene: BilboSwaggins_15 Start: 9679, Stop: 10245, Start Num: 17

Candidate Starts for BilboSwaggins_15:

(Start: 17 @9679 has 123 MA's), (43, 9817), (70, 9907), (73, 9916), (104, 10036), (110, 10063), (127, 10129),

Gene: Bodacious_7 Start: 6336, Stop: 6905, Start Num: 7

Candidate Starts for Bodacious_7:

(Start: 5 @6327 has 52 MA's), (Start: 7 @6336 has 25 MA's), (19, 6381), (42, 6510), (44, 6516), (59, 6579), (70, 6606), (79, 6636), (95, 6687), (97, 6690), (99, 6696), (114, 6747), (115, 6750), (124, 6774), (129, 6804), (142, 6849), (152, 6879), (154, 6894), (156, 6897),

Gene: Brahms_7 Start: 6533, Stop: 7093, Start Num: 11

Candidate Starts for Brahms_7:

(Start: 11 @6533 has 63 MA's), (95, 6866), (117, 6938),

Gene: Bridgette_9 Start: 7210, Stop: 7803, Start Num: 8

Candidate Starts for Bridgette_9:

(Start: 8 @7210 has 13 MA's), (14, 7222), (26, 7267), (31, 7291), (43, 7369), (45, 7375), (49, 7390), (51, 7393), (67, 7453), (78, 7486), (121, 7627), (122, 7630), (142, 7729), (148, 7750),

Gene: BrotherBLo_11 Start: 9191, Stop: 9769, Start Num: 5

Candidate Starts for BrotherBLo_11:

(Start: 5 @9191 has 52 MA's), (Start: 7 @9200 has 25 MA's), (19, 9245), (42, 9374), (44, 9380), (59, 9443), (61, 9452), (64, 9458), (67, 9464), (70, 9470), (79, 9500), (97, 9554), (99, 9560), (114, 9611), (115, 9614), (120, 9626), (124, 9638), (129, 9668), (135, 9689), (142, 9713), (152, 9743), (154, 9758), (156, 9761),

Gene: Bruin_14 Start: 9186, Stop: 9752, Start Num: 17

Candidate Starts for Bruin_14:

(Start: 17 @9186 has 123 MA's), (43, 9324), (70, 9414), (73, 9423), (104, 9543), (110, 9570), (127, 9636),

Gene: Brynnie_9 Start: 7242, Stop: 7829, Start Num: 2

Candidate Starts for Brynnie_9:

(Start: 2 @7242 has 28 MA's), (38, 7422), (54, 7488), (57, 7500), (59, 7506), (67, 7527), (72, 7542), (79, 7563), (124, 7704), (129, 7734),

Gene: BubbaBear_8 Start: 6756, Stop: 7316, Start Num: 11

Candidate Starts for BubbaBear_8:

(Start: 11 @6756 has 63 MA's), (21, 6789), (40, 6903), (42, 6909), (48, 6933), (64, 6990), (69, 6999), (95, 7089), (131, 7215), (152, 7284),

Gene: Buck_14 Start: 9635, Stop: 10201, Start Num: 17

Candidate Starts for Buck_14:

(Start: 17 @9635 has 123 MA's), (43, 9773), (70, 9863), (73, 9872), (104, 9992), (110, 10019), (127, 10085),

Gene: BugsBunny_12 Start: 8752, Stop: 9318, Start Num: 17

Candidate Starts for BugsBunny_12:

(Start: 17 @8752 has 123 MA's), (43, 8890), (70, 8980), (73, 8989), (104, 9109), (110, 9136), (127, 9202),

Gene: Buldak_8 Start: 7041, Stop: 7601, Start Num: 11

Candidate Starts for Buldak_8:

(Start: 11 @7041 has 63 MA's), (40, 7191), (42, 7197), (59, 7263), (60, 7269), (64, 7278), (97, 7377), (111, 7428), (117, 7446), (129, 7494), (131, 7500),

Gene: Burritobowl_8 Start: 6792, Stop: 7352, Start Num: 11

Candidate Starts for Burritobowl_8:

(Start: 11 @6792 has 63 MA's), (40, 6939), (42, 6945), (48, 6969), (64, 7026), (69, 7035), (111, 7179), (114, 7188), (131, 7251), (152, 7320),

Gene: Cactus_16 Start: 8891, Stop: 9457, Start Num: 17

Candidate Starts for Cactus_16:

(Start: 17 @8891 has 123 MA's), (43, 9029), (70, 9119), (73, 9128), (104, 9248), (110, 9275), (127, 9341),

Gene: CallieOMalley_11 Start: 9230, Stop: 9802, Start Num: 6

Candidate Starts for CallieOMalley_11:

(Start: 6 @9230 has 6 MA's), (39, 9392), (42, 9404), (44, 9410), (54, 9455), (59, 9473), (97, 9584), (99, 9590), (124, 9668), (129, 9698), (142, 9743), (143, 9746), (154, 9788), (156, 9791),

Gene: Camara_8 Start: 6715, Stop: 7302, Start Num: 2

Candidate Starts for Camara_8:

(Start: 2 @6715 has 28 MA's), (38, 6895), (56, 6970), (57, 6973), (70, 7006), (76, 7030), (79, 7036), (93, 7081), (98, 7093), (103, 7111), (106, 7120), (124, 7177), (128, 7204), (129, 7207),

Gene: Canowicakte_11 Start: 9265, Stop: 9837, Start Num: 6

Candidate Starts for Canowicakte_11:

(Start: 6 @9265 has 6 MA's), (39, 9427), (42, 9439), (44, 9445), (54, 9490), (97, 9619), (99, 9625), (124, 9703), (129, 9733), (142, 9778), (143, 9781), (154, 9823), (156, 9826),

Gene: Carpal_11 Start: 9191, Stop: 9769, Start Num: 5

Candidate Starts for Carpal_11:

(Start: 5 @9191 has 52 MA's), (Start: 7 @9200 has 25 MA's), (19, 9245), (42, 9374), (44, 9380), (54, 9425), (59, 9443), (64, 9458), (70, 9470), (95, 9551), (97, 9554), (99, 9560), (114, 9611), (115, 9614), (120, 9626), (124, 9638), (129, 9668), (135, 9689), (142, 9713), (152, 9743), (154, 9758), (156, 9761),

Gene: Cashington_8 Start: 6782, Stop: 7342, Start Num: 11

Candidate Starts for Cashington_8:

(Start: 11 @6782 has 63 MA's), (40, 6929), (42, 6935), (48, 6959), (114, 7178), (131, 7241), (152, 7310),

Gene: Catfish_11 Start: 7940, Stop: 8464, Start Num: 13

Candidate Starts for Catfish_11:

(4, 7898), (Start: 11 @7934 has 63 MA's), (Start: 13 @7940 has 8 MA's), (107, 8303), (111, 8315), (124, 8351), (129, 8381),

Gene: Celaena_8 Start: 6843, Stop: 7394, Start Num: 11

Candidate Starts for Celaena_8:

(Start: 11 @6843 has 63 MA's), (40, 6990), (42, 6996), (48, 7020), (56, 7053), (60, 7068), (111, 7221), (131, 7293),

Gene: ChewChew_7 Start: 6326, Stop: 6904, Start Num: 5

Candidate Starts for ChewChew_7:

(Start: 5 @6326 has 52 MA's), (Start: 7 @6335 has 25 MA's), (19, 6380), (42, 6509), (44, 6515), (59, 6578), (64, 6593), (70, 6605), (79, 6635), (95, 6686), (97, 6689), (99, 6695), (114, 6746), (115, 6749), (124, 6773), (129, 6803), (142, 6848), (152, 6878), (154, 6893), (156, 6896),

Gene: Chickaboom_8 Start: 6787, Stop: 7374, Start Num: 2

Candidate Starts for Chickaboom_8:

(Start: 2 @6787 has 28 MA's), (38, 6967), (54, 7033), (57, 7045), (59, 7051), (67, 7072), (72, 7087), (79, 7108), (124, 7249), (129, 7279),

Gene: ChiliPepper_8 Start: 6996, Stop: 7553, Start Num: 11

Candidate Starts for ChiliPepper_8:

(Start: 11 @6996 has 63 MA's), (40, 7143), (48, 7173), (95, 7326), (114, 7389), (131, 7452), (152, 7521),

Gene: Cholula_11 Start: 9236, Stop: 9814, Start Num: 5

Candidate Starts for Cholula_11:

(Start: 5 @9236 has 52 MA's), (Start: 7 @9245 has 25 MA's), (19, 9290), (42, 9419), (44, 9425), (54, 9470), (59, 9488), (64, 9503), (70, 9515), (95, 9596), (97, 9599), (99, 9605), (114, 9656), (115, 9659), (120, 9671), (124, 9683), (129, 9713), (135, 9734), (142, 9758), (152, 9788), (154, 9803), (156, 9806),

Gene: ChosenOne_13 Start: 8353, Stop: 8919, Start Num: 17

Candidate Starts for ChosenOne_13:

(Start: 17 @8353 has 123 MA's), (43, 8491), (70, 8581), (73, 8590), (104, 8710), (110, 8737), (127, 8803),

Gene: ChotaBhai_14 Start: 8389, Stop: 8955, Start Num: 17

Candidate Starts for ChotaBhai_14:

(Start: 17 @8389 has 123 MA's), (43, 8527), (70, 8617), (73, 8626), (104, 8746), (110, 8773), (127, 8839),

Gene: Chridison_7 Start: 6343, Stop: 6924, Start Num: 5

Candidate Starts for Chridison_7:

(Start: 5 @6343 has 52 MA's), (Start: 7 @6352 has 25 MA's), (19, 6397), (28, 6442), (39, 6514), (42, 6526), (44, 6532), (59, 6595), (64, 6610), (70, 6622), (72, 6631), (79, 6652), (95, 6703), (99, 6712), (114, 6763), (115, 6766), (120, 6778), (124, 6790), (129, 6820), (137, 6853), (156, 6913),

Gene: Christian_7 Start: 6327, Stop: 6905, Start Num: 5

Candidate Starts for Christian_7:

(Start: 5 @6327 has 52 MA's), (Start: 7 @6336 has 25 MA's), (19, 6381), (42, 6510), (44, 6516), (59, 6579), (64, 6594), (70, 6606), (79, 6636), (95, 6687), (97, 6690), (99, 6696), (114, 6747), (115, 6750), (124, 6774), (129, 6804), (142, 6849), (152, 6879), (154, 6894), (156, 6897),

Gene: ChuckDuck_9 Start: 7169, Stop: 7759, Start Num: 8

Candidate Starts for ChuckDuck_9:

(Start: 8 @7169 has 13 MA's), (14, 7181), (26, 7226), (45, 7334), (102, 7517), (104, 7523), (121, 7583), (122, 7586), (142, 7685), (148, 7706),

Gene: Chymera_9 Start: 7652, Stop: 8236, Start Num: 11

Candidate Starts for Chymera_9:

(Start: 11 @7652 has 63 MA's), (34, 7757), (63, 7889), (68, 7898), (79, 7937), (141, 8180),

Gene: Cjw1_14 Start: 9903, Stop: 10469, Start Num: 17

Candidate Starts for Cjw1_14:

(Start: 17 @9903 has 123 MA's), (43, 10041), (70, 10131), (73, 10140), (104, 10260), (110, 10287), (127, 10353),

Gene: Clayda5_7 Start: 6533, Stop: 7093, Start Num: 11

Candidate Starts for Clayda5_7:

(Start: 11 @6533 has 63 MA's), (95, 6866), (117, 6938),

Gene: CliffHanger_9 Start: 6740, Stop: 7300, Start Num: 11

Candidate Starts for CliffHanger_9:

(Start: 11 @6740 has 63 MA's), (40, 6890), (42, 6896), (97, 7076), (120, 7151), (131, 7199),

Gene: Coltrane_7 Start: 6533, Stop: 7093, Start Num: 11

Candidate Starts for Coltrane_7:

(Start: 11 @6533 has 63 MA's), (95, 6866), (117, 6938),

Gene: Colusalem_9 Start: 7141, Stop: 7731, Start Num: 2

Candidate Starts for Colusalem_9:

(Start: 2 @7141 has 28 MA's), (16, 7195), (38, 7321), (55, 7390), (57, 7399), (59, 7405), (67, 7426), (75, 7453), (79, 7465), (93, 7510), (124, 7606), (129, 7636), (137, 7669),

Gene: Command613_16 Start: 9947, Stop: 10513, Start Num: 17

Candidate Starts for Command613_16:

(Start: 17 @9947 has 123 MA's), (43, 10085), (70, 10175), (73, 10184), (104, 10304), (110, 10331), (127, 10397),

Gene: Constance_9 Start: 7215, Stop: 7805, Start Num: 8

Candidate Starts for Constance_9:

(Start: 8 @7215 has 13 MA's), (14, 7227), (26, 7272), (104, 7569), (121, 7629), (122, 7632), (142, 7731), (148, 7752), (162, 7791),

Gene: Contagion_14 Start: 9186, Stop: 9752, Start Num: 17

Candidate Starts for Contagion_14:

(Start: 17 @9186 has 123 MA's), (43, 9324), (70, 9414), (73, 9423), (104, 9543), (110, 9570), (127, 9636),

Gene: Cookies_15 Start: 9551, Stop: 10117, Start Num: 17

Candidate Starts for Cookies_15:

(Start: 17 @9551 has 123 MA's), (43, 9689), (70, 9779), (73, 9788), (104, 9908), (110, 9935), (127, 10001),

Gene: Coral_9 Start: 7141, Stop: 7731, Start Num: 2

Candidate Starts for Coral_9:

(Start: 2 @7141 has 28 MA's), (16, 7195), (38, 7321), (55, 7390), (57, 7399), (59, 7405), (67, 7426), (75, 7453), (79, 7465), (93, 7510), (124, 7606), (129, 7636), (137, 7669),

Gene: Cote_10 Start: 7302, Stop: 7892, Start Num: 2

Candidate Starts for Cote_10:

(Start: 2 @7302 has 28 MA's), (16, 7356), (38, 7482), (55, 7551), (57, 7560), (59, 7566), (67, 7587), (75, 7614), (79, 7626), (93, 7671), (124, 7767), (129, 7797), (137, 7830),

Gene: CristinaYang_7 Start: 6336, Stop: 6905, Start Num: 7

Candidate Starts for CristinaYang_7:

(Start: 5 @6327 has 52 MA's), (Start: 7 @6336 has 25 MA's), (19, 6381), (42, 6510), (44, 6516), (59, 6579), (70, 6606), (79, 6636), (95, 6687), (97, 6690), (99, 6696), (114, 6747), (115, 6750), (124, 6774), (129, 6804), (142, 6849), (152, 6879), (154, 6894), (156, 6897),

Gene: CroZenni_8 Start: 6765, Stop: 7325, Start Num: 11

Candidate Starts for CroZenni_8:

(Start: 11 @6765 has 63 MA's), (40, 6912), (42, 6918), (48, 6942), (64, 6999), (69, 7008), (111, 7152), (114, 7161), (131, 7224), (152, 7293),

Gene: CrystalP_15 Start: 9679, Stop: 10245, Start Num: 17

Candidate Starts for CrystalP_15:

(Start: 17 @9679 has 123 MA's), (43, 9817), (70, 9907), (73, 9916), (104, 10036), (110, 10063), (127, 10129),

Gene: Czyszczone1_15 Start: 8888, Stop: 9454, Start Num: 17

Candidate Starts for Czyszczone1_15:

(Start: 17 @8888 has 123 MA's), (43, 9026), (70, 9116), (73, 9125), (104, 9245), (110, 9272), (127, 9338),

Gene: Daiboju_7 Start: 6353, Stop: 6925, Start Num: 7

Candidate Starts for Daiboju_7:

(Start: 5 @6344 has 52 MA's), (Start: 7 @6353 has 25 MA's), (19, 6398), (28, 6443), (42, 6527), (44, 6533), (70, 6623), (79, 6653), (95, 6704), (99, 6713), (124, 6791), (129, 6821), (152, 6896), (156,

6914),

Gene: Daikon_13 Start: 9413, Stop: 9979, Start Num: 17

Candidate Starts for Daikon_13:

(Start: 17 @9413 has 123 MA's), (43, 9551), (70, 9641), (73, 9650), (104, 9770), (110, 9797), (127, 9863),

Gene: Daob_10 Start: 7305, Stop: 7895, Start Num: 2

Candidate Starts for Daob_10:

(Start: 2 @7305 has 28 MA's), (16, 7359), (38, 7485), (55, 7554), (57, 7563), (59, 7569), (67, 7590), (75, 7617), (79, 7629), (93, 7674), (124, 7770), (129, 7800), (137, 7833),

Gene: Dardanus_14 Start: 9026, Stop: 9541, Start Num: 13

Candidate Starts for Dardanus_14:

(Start: 13 @9026 has 8 MA's), (16, 9032), (20, 9050), (Start: 25 @9071 has 2 MA's), (32, 9101), (36, 9143), (52, 9206), (61, 9239), (71, 9260), (81, 9299), (107, 9389), (110, 9398), (111, 9401), (118, 9422), (129, 9467), (139, 9488), (148, 9503), (155, 9530),

Gene: DickRichards_8 Start: 7259, Stop: 7819, Start Num: 11

Candidate Starts for DickRichards_8:

(Start: 11 @7259 has 63 MA's), (40, 7406), (42, 7412), (48, 7436), (64, 7493), (69, 7502), (111, 7646), (114, 7655), (131, 7718), (152, 7787),

Gene: Didgeridoo_9 Start: 6993, Stop: 7544, Start Num: 11

Candidate Starts for Didgeridoo_9:

(Start: 11 @6993 has 63 MA's), (21, 7026), (40, 7140), (42, 7146), (48, 7170), (56, 7203), (60, 7218), (97, 7320), (111, 7371), (131, 7443), (133, 7455), (137, 7470),

Gene: Dino_11 Start: 9190, Stop: 9768, Start Num: 5

Candidate Starts for Dino_11:

(Start: 5 @9190 has 52 MA's), (Start: 7 @9199 has 25 MA's), (19, 9244), (42, 9373), (44, 9379), (54, 9424), (59, 9442), (64, 9457), (70, 9469), (95, 9550), (97, 9553), (99, 9559), (114, 9610), (115, 9613), (120, 9625), (124, 9637), (129, 9667), (135, 9688), (142, 9712), (152, 9742), (154, 9757), (156, 9760),

Gene: DinoDaryn_14 Start: 9110, Stop: 9634, Start Num: 13

Candidate Starts for DinoDaryn_14:

(Start: 13 @9110 has 8 MA's), (Start: 25 @9155 has 2 MA's), (37, 9230), (50, 9284), (59, 9314), (71, 9344), (88, 9401), (94, 9425), (108, 9470), (111, 9479), (129, 9545), (137, 9563), (145, 9581), (155, 9620),

Gene: DirtyBubble_8 Start: 7014, Stop: 7574, Start Num: 11

Candidate Starts for DirtyBubble_8:

(Start: 11 @7014 has 63 MA's), (40, 7161), (42, 7167), (48, 7191), (64, 7248), (111, 7401), (114, 7410), (131, 7473), (137, 7500), (159, 7569),

Gene: Dismas_8 Start: 6996, Stop: 7553, Start Num: 11

Candidate Starts for Dismas_8:

(Start: 11 @6996 has 63 MA's), (40, 7143), (48, 7173), (95, 7326), (114, 7389), (131, 7452), (152, 7521),

Gene: DoctorDiddles_15 Start: 8844, Stop: 9410, Start Num: 17

Candidate Starts for DoctorDiddles_15:

(Start: 17 @8844 has 123 MA's), (43, 8982), (70, 9072), (73, 9081), (104, 9201), (110, 9228), (127, 9294),

Gene: Doobus_8 Start: 6987, Stop: 7556, Start Num: 11

Candidate Starts for Doobus_8:

(Start: 11 @6987 has 63 MA's), (40, 7134), (42, 7140), (111, 7383), (114, 7392), (152, 7524),

Gene: DrDrey_15 Start: 9629, Stop: 10195, Start Num: 17

Candidate Starts for DrDrey_15:

(Start: 17 @9629 has 123 MA's), (43, 9767), (70, 9857), (73, 9866), (104, 9986), (110, 10013), (127, 10079),

Gene: DrRobert_7 Start: 6327, Stop: 6905, Start Num: 5

Candidate Starts for DrRobert_7:

(Start: 5 @6327 has 52 MA's), (Start: 7 @6336 has 25 MA's), (19, 6381), (42, 6510), (44, 6516), (59, 6579), (64, 6594), (70, 6606), (79, 6636), (95, 6687), (97, 6690), (99, 6696), (114, 6747), (115, 6750), (124, 6774), (129, 6804), (142, 6849), (152, 6879), (154, 6894), (156, 6897),

Gene: DreamTeam_7 Start: 6382, Stop: 6951, Start Num: 7

Candidate Starts for DreamTeam_7:

(Start: 5 @6373 has 52 MA's), (Start: 7 @6382 has 25 MA's), (19, 6427), (42, 6556), (44, 6562), (70, 6652), (80, 6685), (95, 6733), (99, 6742), (114, 6793), (115, 6796), (120, 6808), (124, 6820), (129, 6850), (135, 6871), (142, 6895), (152, 6925), (154, 6940), (156, 6943),

Gene: Dubu_8 Start: 6313, Stop: 6891, Start Num: 9

Candidate Starts for Dubu_8:

(Start: 9 @6313 has 6 MA's), (28, 6391), (33, 6409), (56, 6529), (89, 6640), (101, 6682), (131, 6784), (138, 6814),

Gene: Dumbo_14 Start: 8610, Stop: 9176, Start Num: 17

Candidate Starts for Dumbo_14:

(Start: 17 @8610 has 123 MA's), (43, 8748), (70, 8838), (73, 8847), (104, 8967), (110, 8994), (127, 9060),

Gene: Dusk_14 Start: 9338, Stop: 9904, Start Num: 17

Candidate Starts for Dusk_14:

(Start: 17 @9338 has 123 MA's), (43, 9476), (70, 9566), (73, 9575), (104, 9695), (110, 9722), (127, 9788),

Gene: E1_8 Start: 6423, Stop: 6980, Start Num: 8

Candidate Starts for E1_8:

(Start: 8 @6423 has 13 MA's), (16, 6438), (32, 6495), (34, 6513), (35, 6516), (60, 6639), (73, 6672), (79, 6696), (80, 6699), (85, 6714), (97, 6750), (106, 6783), (107, 6792), (125, 6843), (131, 6876), (132, 6885), (139, 6906), (155, 6960),

Gene: Easy2Say_15 Start: 9876, Stop: 10442, Start Num: 17

Candidate Starts for Easy2Say_15:

(Start: 17 @9876 has 123 MA's), (43, 10014), (70, 10104), (73, 10113), (104, 10233), (110, 10260), (127, 10326),

Gene: Eden_7 Start: 6625, Stop: 7182, Start Num: 11

Candidate Starts for Eden_7:

(Start: 11 @6625 has 63 MA's), (42, 6778), (60, 6850), (111, 7009), (117, 7027),

Gene: Eesa_9 Start: 7305, Stop: 7892, Start Num: 2

Candidate Starts for Eesa_9:

(Start: 2 @7305 has 28 MA's), (32, 7431), (38, 7485), (51, 7533), (57, 7563), (59, 7569), (67, 7590), (72, 7605), (79, 7626), (87, 7647), (96, 7677), (107, 7719), (124, 7767), (137, 7830),

Gene: Eileen_9 Start: 7175, Stop: 7768, Start Num: 8

Candidate Starts for Eileen_9:

(Start: 8 @7175 has 13 MA's), (14, 7187), (26, 7232), (43, 7334), (45, 7340), (49, 7355), (51, 7358), (67, 7418), (78, 7451), (121, 7592), (148, 7715),

Gene: Elite2014_13 Start: 8353, Stop: 8919, Start Num: 17

Candidate Starts for Elite2014_13:

(Start: 17 @8353 has 123 MA's), (43, 8491), (70, 8581), (73, 8590), (104, 8710), (110, 8737), (127, 8803),

Gene: Elph10_15 Start: 8613, Stop: 9179, Start Num: 17

Candidate Starts for Elph10_15:

(Start: 17 @8613 has 123 MA's), (43, 8751), (70, 8841), (73, 8850), (104, 8970), (110, 8997), (127, 9063),

Gene: Elva_9 Start: 7080, Stop: 7631, Start Num: 11

Candidate Starts for Elva_9:

(Start: 11 @7080 has 63 MA's), (40, 7227), (56, 7290), (60, 7305), (97, 7407), (105, 7434), (111, 7458), (114, 7467), (131, 7530), (137, 7557),

Gene: Emmina_14 Start: 8458, Stop: 9024, Start Num: 17

Candidate Starts for Emmina_14:

(Start: 17 @8458 has 123 MA's), (43, 8596), (70, 8686), (73, 8695), (104, 8815), (110, 8842), (127, 8908),

Gene: EstebanJulior_7 Start: 6380, Stop: 6949, Start Num: 7

Candidate Starts for EstebanJulior_7:

(Start: 5 @6371 has 52 MA's), (Start: 7 @6380 has 25 MA's), (19, 6425), (42, 6554), (44, 6560), (59, 6623), (70, 6650), (97, 6734), (99, 6740), (114, 6791), (115, 6794), (120, 6806), (124, 6818), (129, 6848), (142, 6893), (152, 6923), (154, 6938), (156, 6941),

Gene: Eula_8 Start: 6763, Stop: 7323, Start Num: 11

Candidate Starts for Eula_8:

(Start: 11 @6763 has 63 MA's), (40, 6910), (42, 6916), (48, 6940), (114, 7159), (131, 7222), (152, 7291),

Gene: Eunoia_7 Start: 6351, Stop: 6923, Start Num: 7

Candidate Starts for Eunoia_7:

(Start: 5 @6342 has 52 MA's), (Start: 7 @6351 has 25 MA's), (19, 6396), (28, 6441), (39, 6513), (42, 6525), (44, 6531), (70, 6621), (79, 6651), (95, 6702), (99, 6711), (114, 6762), (115, 6765), (120, 6777), (124, 6789), (129, 6819), (137, 6852), (156, 6912),

Gene: Eureka_15 Start: 9658, Stop: 10224, Start Num: 17

Candidate Starts for Eureka_15:

(Start: 17 @9658 has 123 MA's), (43, 9796), (70, 9886), (73, 9895), (104, 10015), (110, 10042), (127, 10108),

Gene: FairyPath_15 Start: 9876, Stop: 10442, Start Num: 17
Candidate Starts for FairyPath_15:
(Start: 17 @9876 has 123 MA's), (43, 10014), (70, 10104), (73, 10113), (104, 10233), (110, 10260),
(127, 10326),

Gene: Filch_15 Start: 8898, Stop: 9464, Start Num: 17
Candidate Starts for Filch_15:
(Start: 17 @8898 has 123 MA's), (43, 9036), (70, 9126), (73, 9135), (104, 9255), (110, 9282), (127,
9348),

Gene: Finalfrontier_9 Start: 7274, Stop: 7834, Start Num: 11
Candidate Starts for Finalfrontier_9:
(Start: 11 @7274 has 63 MA's), (40, 7421), (42, 7427), (48, 7451), (114, 7670), (131, 7733), (152,
7802),

Gene: FireRed_14 Start: 9186, Stop: 9752, Start Num: 17
Candidate Starts for FireRed_14:
(Start: 17 @9186 has 123 MA's), (43, 9324), (70, 9414), (73, 9423), (104, 9543), (110, 9570), (127,
9636),

Gene: FlameThrower_8 Start: 6731, Stop: 7282, Start Num: 11
Candidate Starts for FlameThrower_8:
(Start: 11 @6731 has 63 MA's), (40, 6878), (42, 6884), (48, 6908), (56, 6941), (60, 6956), (111, 7109),
(131, 7181),

Gene: Fluke_11 Start: 9232, Stop: 9810, Start Num: 5
Candidate Starts for Fluke_11:
(Start: 5 @9232 has 52 MA's), (Start: 7 @9241 has 25 MA's), (19, 9286), (42, 9415), (44, 9421), (54,
9466), (59, 9484), (64, 9499), (70, 9511), (97, 9595), (99, 9601), (114, 9652), (115, 9655), (120, 9667),
(124, 9679), (129, 9709), (135, 9730), (142, 9754), (152, 9784), (154, 9799), (156, 9802),

Gene: Flypotenuse_13 Start: 9295, Stop: 9861, Start Num: 17
Candidate Starts for Flypotenuse_13:
(Start: 17 @9295 has 123 MA's), (43, 9433), (70, 9523), (73, 9532), (104, 9652), (110, 9679), (127,
9745),

Gene: Franklin22_7 Start: 6606, Stop: 7163, Start Num: 11
Candidate Starts for Franklin22_7:
(Start: 11 @6606 has 63 MA's), (42, 6759), (60, 6831), (97, 6939), (111, 6990), (117, 7008), (129,
7056), (150, 7128),

Gene: Gack_7 Start: 6676, Stop: 7233, Start Num: 11
Candidate Starts for Gack_7:
(Start: 11 @6676 has 63 MA's), (42, 6829), (54, 6877), (117, 7078),

Gene: Gage_16 Start: 9133, Stop: 9699, Start Num: 17
Candidate Starts for Gage_16:
(Start: 17 @9133 has 123 MA's), (43, 9271), (70, 9361), (73, 9370), (104, 9490), (110, 9517), (127,
9583),

Gene: Galaxy_9 Start: 7113, Stop: 7700, Start Num: 2
Candidate Starts for Galaxy_9:

(Start: 2 @7113 has 28 MA's), (38, 7293), (54, 7359), (59, 7377), (67, 7398), (72, 7413), (79, 7434), (124, 7575), (129, 7605),

Gene: Gator_13 Start: 9294, Stop: 9860, Start Num: 17

Candidate Starts for Gator_13:

(Start: 17 @9294 has 123 MA's), (43, 9432), (70, 9522), (73, 9531), (104, 9651), (110, 9678), (127, 9744),

Gene: Gemini_16 Start: 9133, Stop: 9699, Start Num: 17

Candidate Starts for Gemini_16:

(Start: 17 @9133 has 123 MA's), (43, 9271), (70, 9361), (73, 9370), (104, 9490), (110, 9517), (127, 9583),

Gene: Gisselle_7 Start: 6382, Stop: 6951, Start Num: 7

Candidate Starts for Gisselle_7:

(Start: 5 @6373 has 52 MA's), (Start: 7 @6382 has 25 MA's), (19, 6427), (42, 6556), (44, 6562), (70, 6652), (80, 6685), (95, 6733), (99, 6742), (114, 6793), (115, 6796), (120, 6808), (124, 6820), (129, 6850), (135, 6871), (142, 6895), (152, 6925), (154, 6940), (156, 6943),

Gene: Glenn_11 Start: 9251, Stop: 9820, Start Num: 7

Candidate Starts for Glenn_11:

(Start: 5 @9242 has 52 MA's), (Start: 7 @9251 has 25 MA's), (19, 9296), (42, 9425), (44, 9431), (54, 9476), (59, 9494), (64, 9509), (67, 9515), (70, 9521), (97, 9605), (99, 9611), (114, 9662), (115, 9665), (124, 9689), (129, 9719), (142, 9764), (152, 9794), (154, 9809), (156, 9812),

Gene: Glexan_13 Start: 9295, Stop: 9861, Start Num: 17

Candidate Starts for Glexan_13:

(Start: 17 @9295 has 123 MA's), (43, 9433), (70, 9523), (73, 9532), (104, 9652), (110, 9679), (127, 9745),

Gene: GlobiWarming_9 Start: 7170, Stop: 7760, Start Num: 8

Candidate Starts for GlobiWarming_9:

(Start: 8 @7170 has 13 MA's), (14, 7182), (26, 7227), (102, 7518), (104, 7524), (121, 7584), (122, 7587), (142, 7686), (148, 7707),

Gene: Goib_13 Start: 8885, Stop: 9409, Start Num: 13

Candidate Starts for Goib_13:

(Start: 13 @8885 has 8 MA's), (Start: 25 @8930 has 2 MA's), (37, 9005), (50, 9059), (59, 9089), (71, 9119), (88, 9176), (94, 9200), (108, 9245), (110, 9251), (111, 9254), (129, 9320), (137, 9338), (145, 9356), (155, 9395),

Gene: Goku_15 Start: 9385, Stop: 9951, Start Num: 17

Candidate Starts for Goku_15:

(Start: 17 @9385 has 123 MA's), (43, 9523), (70, 9613), (73, 9622), (104, 9742), (110, 9769), (127, 9835),

Gene: GoldenSpark_16 Start: 9133, Stop: 9699, Start Num: 17

Candidate Starts for GoldenSpark_16:

(Start: 17 @9133 has 123 MA's), (43, 9271), (70, 9361), (73, 9370), (104, 9490), (110, 9517), (127, 9583),

Gene: Goldilocks_16 Start: 9089, Stop: 9655, Start Num: 17

Candidate Starts for Goldilocks_16:

(Start: 17 @9089 has 123 MA's), (43, 9227), (70, 9317), (73, 9326), (104, 9446), (110, 9473), (127, 9539),

Gene: GooberAzure_16 Start: 9133, Stop: 9699, Start Num: 17

Candidate Starts for GooberAzure_16:

(Start: 17 @9133 has 123 MA's), (43, 9271), (70, 9361), (73, 9370), (104, 9490), (110, 9517), (127, 9583),

Gene: GreenHearts_11 Start: 9314, Stop: 9892, Start Num: 5

Candidate Starts for GreenHearts_11:

(Start: 5 @9314 has 52 MA's), (Start: 7 @9323 has 25 MA's), (19, 9368), (39, 9485), (42, 9497), (44, 9503), (59, 9566), (70, 9593), (97, 9677), (99, 9683), (107, 9713), (124, 9761), (129, 9791), (156, 9884),

Gene: Greenhouse_11 Start: 9248, Stop: 9817, Start Num: 7

Candidate Starts for Greenhouse_11:

(Start: 5 @9239 has 52 MA's), (Start: 7 @9248 has 25 MA's), (19, 9293), (39, 9410), (42, 9422), (44, 9428), (59, 9491), (97, 9602), (99, 9608), (107, 9638), (124, 9686), (129, 9716), (156, 9809),

Gene: Gspu1_10 Start: 7323, Stop: 7862, Start Num: 7

Candidate Starts for Gspu1_10:

(Start: 7 @7323 has 25 MA's), (Start: 13 @7341 has 8 MA's), (37, 7464), (42, 7488), (71, 7578), (88, 7635), (99, 7671), (112, 7716), (127, 7770), (129, 7779), (141, 7806), (142, 7809), (149, 7830), (155, 7854),

Gene: HanKaySha_15 Start: 8888, Stop: 9454, Start Num: 17

Candidate Starts for HanKaySha_15:

(Start: 17 @8888 has 123 MA's), (43, 9026), (70, 9116), (73, 9125), (104, 9245), (110, 9272), (127, 9338),

Gene: HannahPhantana_10 Start: 7305, Stop: 7895, Start Num: 2

Candidate Starts for HannahPhantana_10:

(Start: 2 @7305 has 28 MA's), (16, 7359), (38, 7485), (55, 7554), (57, 7563), (59, 7569), (67, 7590), (75, 7617), (79, 7629), (93, 7674), (124, 7770), (129, 7800), (137, 7833),

Gene: Harella_13 Start: 9295, Stop: 9861, Start Num: 17

Candidate Starts for Harella_13:

(Start: 17 @9295 has 123 MA's), (43, 9433), (70, 9523), (73, 9532), (104, 9652), (110, 9679), (127, 9745),

Gene: HeadNerd_7 Start: 6329, Stop: 6907, Start Num: 5

Candidate Starts for HeadNerd_7:

(Start: 5 @6329 has 52 MA's), (Start: 7 @6338 has 25 MA's), (19, 6383), (42, 6512), (44, 6518), (59, 6581), (70, 6608), (97, 6692), (99, 6698), (114, 6749), (115, 6752), (120, 6764), (124, 6776), (129, 6806), (142, 6851), (152, 6881), (154, 6896), (156, 6899),

Gene: Henry_15 Start: 9678, Stop: 10244, Start Num: 17

Candidate Starts for Henry_15:

(Start: 17 @9678 has 123 MA's), (43, 9816), (70, 9906), (73, 9915), (104, 10035), (110, 10062), (127, 10128),

Gene: Herb_7 Start: 6353, Stop: 6925, Start Num: 7

Candidate Starts for Herb_7:

(Start: 5 @6344 has 52 MA's), (Start: 7 @6353 has 25 MA's), (19, 6398), (28, 6443), (42, 6527), (44, 6533), (70, 6623), (79, 6653), (95, 6704), (99, 6713), (124, 6791), (129, 6821), (152, 6896), (156, 6914),

Gene: Highbury_15 Start: 8807, Stop: 9373, Start Num: 17

Candidate Starts for Highbury_15:

(Start: 17 @8807 has 123 MA's), (43, 8945), (70, 9035), (73, 9044), (104, 9164), (110, 9191), (127, 9257),

Gene: Holt_16 Start: 8962, Stop: 9528, Start Num: 17

Candidate Starts for Holt_16:

(Start: 17 @8962 has 123 MA's), (43, 9100), (70, 9190), (73, 9199), (104, 9319), (110, 9346), (127, 9412),

Gene: Hoonter_16 Start: 9133, Stop: 9699, Start Num: 17

Candidate Starts for Hoonter_16:

(Start: 17 @9133 has 123 MA's), (43, 9271), (70, 9361), (73, 9370), (104, 9490), (110, 9517), (127, 9583),

Gene: Hokey_15 Start: 8898, Stop: 9464, Start Num: 17

Candidate Starts for Hokey_15:

(Start: 17 @8898 has 123 MA's), (43, 9036), (70, 9126), (73, 9135), (104, 9255), (110, 9282), (127, 9348),

Gene: Huckleberry_7 Start: 6338, Stop: 6907, Start Num: 7

Candidate Starts for Huckleberry_7:

(Start: 5 @6329 has 52 MA's), (Start: 7 @6338 has 25 MA's), (19, 6383), (42, 6512), (44, 6518), (59, 6581), (70, 6608), (97, 6692), (99, 6698), (114, 6749), (115, 6752), (120, 6764), (124, 6776), (129, 6806), (142, 6851), (152, 6881), (154, 6896), (156, 6899),

Gene: HufflyPuff_13 Start: 9142, Stop: 9708, Start Num: 17

Candidate Starts for HufflyPuff_13:

(Start: 17 @9142 has 123 MA's), (43, 9280), (70, 9370), (73, 9379), (104, 9499), (110, 9526), (127, 9592),

Gene: Huffly_14 Start: 9110, Stop: 9634, Start Num: 13

Candidate Starts for Huffly_14:

(Start: 13 @9110 has 8 MA's), (Start: 25 @9155 has 2 MA's), (37, 9230), (50, 9284), (59, 9314), (71, 9344), (88, 9401), (94, 9425), (108, 9470), (111, 9479), (129, 9545), (137, 9563), (145, 9581), (155, 9620),

Gene: HunterDalle_7 Start: 6342, Stop: 6923, Start Num: 5

Candidate Starts for HunterDalle_7:

(Start: 5 @6342 has 52 MA's), (Start: 7 @6351 has 25 MA's), (19, 6396), (28, 6441), (39, 6513), (42, 6525), (44, 6531), (70, 6621), (72, 6630), (79, 6651), (95, 6702), (99, 6711), (114, 6762), (115, 6765), (120, 6777), (124, 6789), (129, 6819), (137, 6852), (156, 6912),

Gene: Huntingdon_11 Start: 9225, Stop: 9803, Start Num: 5

Candidate Starts for Huntingdon_11:

(Start: 5 @9225 has 52 MA's), (Start: 7 @9234 has 25 MA's), (19, 9279), (39, 9396), (42, 9408), (44, 9414), (59, 9477), (99, 9594), (124, 9672), (129, 9702), (156, 9795),

Gene: IHOP_14 Start: 9338, Stop: 9904, Start Num: 17

Candidate Starts for IHOP_14:

(Start: 17 @9338 has 123 MA's), (43, 9476), (70, 9566), (73, 9575), (104, 9695), (110, 9722), (127, 9788),

Gene: Ibantik_72 Start: 34097, Stop: 34657, Start Num: 9

Candidate Starts for Ibantik_72:

(Start: 9 @34097 has 6 MA's), (18, 34121), (20, 34133), (60, 34331), (89, 34421), (113, 34496), (122, 34520), (146, 34592),

Gene: Icarian_9 Start: 7006, Stop: 7557, Start Num: 11

Candidate Starts for Icarian_9:

(Start: 11 @7006 has 63 MA's), (21, 7039), (40, 7153), (48, 7183), (56, 7216), (60, 7231), (97, 7333), (111, 7384), (131, 7456), (137, 7483), (159, 7552),

Gene: Icee_14 Start: 9338, Stop: 9904, Start Num: 17

Candidate Starts for Icee_14:

(Start: 17 @9338 has 123 MA's), (43, 9476), (70, 9566), (73, 9575), (104, 9695), (110, 9722), (127, 9788),

Gene: Immaculata_11 Start: 9236, Stop: 9814, Start Num: 5

Candidate Starts for Immaculata_11:

(Start: 5 @9236 has 52 MA's), (Start: 7 @9245 has 25 MA's), (19, 9290), (42, 9419), (44, 9425), (54, 9470), (59, 9488), (64, 9503), (70, 9515), (95, 9596), (97, 9599), (99, 9605), (114, 9656), (115, 9659), (120, 9671), (124, 9683), (129, 9713), (135, 9734), (142, 9758), (152, 9788), (154, 9803), (156, 9806),

Gene: Inca_14 Start: 8358, Stop: 8924, Start Num: 17

Candidate Starts for Inca_14:

(Start: 17 @8358 has 123 MA's), (43, 8496), (70, 8586), (73, 8595), (104, 8715), (110, 8742), (127, 8808),

Gene: IndyLu_8 Start: 6817, Stop: 7368, Start Num: 11

Candidate Starts for IndyLu_8:

(Start: 11 @6817 has 63 MA's), (21, 6850), (40, 6964), (42, 6970), (48, 6994), (60, 7042), (97, 7144), (111, 7195), (131, 7267), (133, 7279),

Gene: Jamun_9 Start: 7454, Stop: 8041, Start Num: 2

Candidate Starts for Jamun_9:

(Start: 2 @7454 has 28 MA's), (38, 7634), (54, 7700), (57, 7712), (59, 7718), (67, 7739), (72, 7754), (79, 7775), (91, 7811), (124, 7916), (129, 7946),

Gene: JeTaime_16 Start: 9938, Stop: 10504, Start Num: 17

Candidate Starts for JeTaime_16:

(Start: 17 @9938 has 123 MA's), (43, 10076), (70, 10166), (73, 10175), (104, 10295), (110, 10322), (127, 10388),

Gene: Jerole_10 Start: 7302, Stop: 7892, Start Num: 2

Candidate Starts for Jerole_10:

(Start: 2 @7302 has 28 MA's), (16, 7356), (38, 7482), (55, 7551), (57, 7560), (59, 7566), (67, 7587), (75, 7614), (79, 7626), (93, 7671), (124, 7767), (129, 7797), (137, 7830),

Gene: Joann_11 Start: 9217, Stop: 9795, Start Num: 5

Candidate Starts for Joann_11:

(Start: 5 @9217 has 52 MA's), (Start: 7 @9226 has 25 MA's), (19, 9271), (39, 9388), (42, 9400), (44, 9406), (59, 9469), (70, 9496), (97, 9580), (99, 9586), (107, 9616), (124, 9664), (129, 9694), (156, 9787),

Gene: Johnathan_8 Start: 6765, Stop: 7325, Start Num: 11

Candidate Starts for Johnathan_8:

(Start: 11 @6765 has 63 MA's), (40, 6912), (42, 6918), (48, 6942), (64, 6999), (111, 7152), (114, 7161), (131, 7224), (152, 7293),

Gene: Jovita_8 Start: 6864, Stop: 7424, Start Num: 11

Candidate Starts for Jovita_8:

(Start: 11 @6864 has 63 MA's), (40, 7011), (42, 7017), (48, 7041), (114, 7260), (131, 7323), (152, 7392),

Gene: Judy_9 Start: 7214, Stop: 7804, Start Num: 8

Candidate Starts for Judy_9:

(Start: 8 @7214 has 13 MA's), (14, 7226), (26, 7271), (102, 7562), (104, 7568), (121, 7628), (122, 7631), (142, 7730), (148, 7751),

Gene: Jumboset_11 Start: 9185, Stop: 9763, Start Num: 5

Candidate Starts for Jumboset_11:

(Start: 5 @9185 has 52 MA's), (Start: 7 @9194 has 25 MA's), (19, 9239), (42, 9368), (44, 9374), (54, 9419), (59, 9437), (64, 9452), (70, 9464), (97, 9548), (99, 9554), (114, 9605), (115, 9608), (124, 9632), (129, 9662), (135, 9683), (142, 9707), (152, 9737), (154, 9752), (156, 9755),

Gene: Juno112_8 Start: 6715, Stop: 7302, Start Num: 2

Candidate Starts for Juno112_8:

(Start: 2 @6715 has 28 MA's), (38, 6895), (50, 6940), (56, 6970), (57, 6973), (70, 7006), (76, 7030), (79, 7036), (93, 7081), (98, 7093), (106, 7120), (124, 7177), (128, 7204), (129, 7207),

Gene: KHumphrey_8 Start: 6714, Stop: 7301, Start Num: 2

Candidate Starts for KHumphrey_8:

(Start: 2 @6714 has 28 MA's), (38, 6894), (50, 6939), (56, 6969), (57, 6972), (70, 7005), (76, 7029), (79, 7035), (93, 7080), (98, 7092), (103, 7110), (106, 7119), (124, 7176), (128, 7203), (129, 7206),

Gene: Kalizoi_11 Start: 9184, Stop: 9762, Start Num: 5

Candidate Starts for Kalizoi_11:

(Start: 5 @9184 has 52 MA's), (Start: 7 @9193 has 25 MA's), (19, 9238), (42, 9367), (44, 9373), (54, 9418), (59, 9436), (64, 9451), (70, 9463), (95, 9544), (97, 9547), (99, 9553), (114, 9604), (115, 9607), (120, 9619), (124, 9631), (129, 9661), (135, 9682), (142, 9706), (152, 9736), (154, 9751), (156, 9754),

Gene: Kanye_16 Start: 10126, Stop: 10692, Start Num: 17

Candidate Starts for Kanye_16:

(Start: 17 @10126 has 123 MA's), (43, 10264), (70, 10354), (73, 10363), (104, 10483), (110, 10510), (127, 10576),

Gene: Karkharias_9 Start: 7171, Stop: 7764, Start Num: 8

Candidate Starts for Karkharias_9:

(Start: 8 @7171 has 13 MA's), (14, 7183), (26, 7228), (43, 7330), (45, 7336), (49, 7351), (51, 7354), (78, 7447), (121, 7588), (122, 7591), (142, 7690), (148, 7711),

Gene: Kate33_8 Start: 6816, Stop: 7367, Start Num: 11

Candidate Starts for Kate33_8:

(Start: 11 @6816 has 63 MA's), (21, 6849), (40, 6963), (42, 6969), (48, 6993), (56, 7026), (60, 7041), (97, 7143), (111, 7194), (131, 7266), (133, 7278),

Gene: Katzastrophic_8 Start: 6906, Stop: 7457, Start Num: 11

Candidate Starts for Katzastrophic_8:

(Start: 11 @6906 has 63 MA's), (40, 7053), (42, 7059), (48, 7083), (56, 7116), (60, 7131), (111, 7284), (131, 7356),

Gene: KayMoney_9 Start: 7171, Stop: 7761, Start Num: 8

Candidate Starts for KayMoney_9:

(Start: 8 @7171 has 13 MA's), (14, 7183), (26, 7228), (45, 7336), (102, 7519), (104, 7525), (121, 7585), (122, 7588), (142, 7687), (148, 7708),

Gene: Kenzers_8 Start: 6779, Stop: 7339, Start Num: 11

Candidate Starts for Kenzers_8:

(Start: 11 @6779 has 63 MA's), (21, 6812), (40, 6926), (42, 6932), (48, 6956), (64, 7013), (69, 7022), (95, 7112), (131, 7238), (152, 7307),

Gene: Kepler_9 Start: 7140, Stop: 7730, Start Num: 2

Candidate Starts for Kepler_9:

(Start: 2 @7140 has 28 MA's), (16, 7194), (38, 7320), (55, 7389), (57, 7398), (59, 7404), (67, 7425), (75, 7452), (79, 7464), (93, 7509), (124, 7605), (129, 7635), (137, 7668),

Gene: Khuang_7 Start: 5855, Stop: 6379, Start Num: 16

Candidate Starts for Khuang_7:

(16, 5855), (97, 6161), (107, 6197), (126, 6251), (130, 6275),

Gene: Kieran_8 Start: 6999, Stop: 7556, Start Num: 11

Candidate Starts for Kieran_8:

(Start: 11 @6999 has 63 MA's), (40, 7146), (48, 7176), (95, 7329), (114, 7392), (131, 7455), (152, 7524),

Gene: Kimchi_16 Start: 9133, Stop: 9699, Start Num: 17

Candidate Starts for Kimchi_16:

(Start: 17 @9133 has 123 MA's), (43, 9271), (70, 9361), (73, 9370), (104, 9490), (110, 9517), (127, 9583),

Gene: KingBob_7 Start: 6353, Stop: 6925, Start Num: 7

Candidate Starts for KingBob_7:

(Start: 5 @6344 has 52 MA's), (Start: 7 @6353 has 25 MA's), (19, 6398), (28, 6443), (42, 6527), (44, 6533), (70, 6623), (79, 6653), (95, 6704), (99, 6713), (124, 6791), (129, 6821), (152, 6896), (156, 6914),

Gene: Kittykat_7 Start: 6370, Stop: 6948, Start Num: 5

Candidate Starts for Kittykat_7:

(Start: 5 @6370 has 52 MA's), (Start: 7 @6379 has 25 MA's), (19, 6424), (42, 6553), (70, 6649), (80, 6682), (95, 6730), (99, 6739), (114, 6790), (115, 6793), (120, 6805), (124, 6817), (129, 6847), (135, 6868), (142, 6892), (152, 6922), (156, 6940),

Gene: Korra_11 Start: 9199, Stop: 9768, Start Num: 7

Candidate Starts for Korra_11:

(Start: 5 @9190 has 52 MA's), (Start: 7 @9199 has 25 MA's), (19, 9244), (42, 9373), (44, 9379), (54, 9424), (59, 9442), (64, 9457), (70, 9469), (95, 9550), (97, 9553), (99, 9559), (114, 9610), (115, 9613),

(120, 9625), (124, 9637), (129, 9667), (135, 9688), (142, 9712), (152, 9742), (154, 9757), (156, 9760),

Gene: Kostya_15 Start: 9678, Stop: 10244, Start Num: 17

Candidate Starts for Kostya_15:

(Start: 17 @9678 has 123 MA's), (43, 9816), (70, 9906), (73, 9915), (104, 10035), (110, 10062), (127, 10128),

Gene: Kromp_9 Start: 7708, Stop: 8337, Start Num: 8

Candidate Starts for Kromp_9:

(Start: 8 @7708 has 13 MA's), (23, 7753), (27, 7768), (36, 7837), (63, 7942), (65, 7945), (74, 7975), (92, 8059), (100, 8083), (104, 8110), (116, 8158), (119, 8164), (134, 8233), (136, 8245), (162, 8323),

Gene: Kuleana_9 Start: 7105, Stop: 7692, Start Num: 2

Candidate Starts for Kuleana_9:

(Start: 2 @7105 has 28 MA's), (38, 7285), (55, 7354), (56, 7360), (57, 7363), (67, 7390), (79, 7426), (124, 7567), (129, 7597),

Gene: Lahqtemish_8 Start: 6855, Stop: 7412, Start Num: 11

Candidate Starts for Lahqtemish_8:

(Start: 11 @6855 has 63 MA's), (40, 7002), (42, 7008), (48, 7032), (97, 7188), (111, 7239), (131, 7311), (133, 7323), (137, 7338),

Gene: Lakshmi_11 Start: 9244, Stop: 9822, Start Num: 5

Candidate Starts for Lakshmi_11:

(Start: 5 @9244 has 52 MA's), (Start: 7 @9253 has 25 MA's), (19, 9298), (39, 9415), (42, 9427), (44, 9433), (59, 9496), (70, 9523), (97, 9607), (99, 9613), (107, 9643), (124, 9691), (129, 9721), (156, 9814),

Gene: Lasagna_7 Start: 6336, Stop: 6905, Start Num: 7

Candidate Starts for Lasagna_7:

(Start: 5 @6327 has 52 MA's), (Start: 7 @6336 has 25 MA's), (19, 6381), (42, 6510), (44, 6516), (59, 6579), (70, 6606), (79, 6636), (95, 6687), (97, 6690), (99, 6696), (114, 6747), (115, 6750), (124, 6774), (129, 6804), (142, 6849), (152, 6879), (154, 6894), (156, 6897),

Gene: Lennox_7 Start: 6327, Stop: 6905, Start Num: 5

Candidate Starts for Lennox_7:

(Start: 5 @6327 has 52 MA's), (Start: 7 @6336 has 25 MA's), (19, 6381), (42, 6510), (44, 6516), (59, 6579), (64, 6594), (70, 6606), (79, 6636), (95, 6687), (97, 6690), (99, 6696), (114, 6747), (115, 6750), (124, 6774), (129, 6804), (142, 6849), (152, 6879), (154, 6894), (156, 6897),

Gene: Leona_8 Start: 6765, Stop: 7352, Start Num: 2

Candidate Starts for Leona_8:

(Start: 2 @6765 has 28 MA's), (Start: 25 @6858 has 2 MA's), (31, 6888), (38, 6945), (56, 7020), (57, 7023), (67, 7050), (79, 7086), (93, 7131), (103, 7161), (124, 7227), (128, 7254), (129, 7257),

Gene: LilStuart_7 Start: 6327, Stop: 6905, Start Num: 5

Candidate Starts for LilStuart_7:

(Start: 5 @6327 has 52 MA's), (Start: 7 @6336 has 25 MA's), (19, 6381), (42, 6510), (44, 6516), (59, 6579), (64, 6594), (70, 6606), (79, 6636), (95, 6687), (97, 6690), (99, 6696), (114, 6747), (115, 6750), (124, 6774), (129, 6804), (142, 6849), (152, 6879), (154, 6894), (156, 6897),

Gene: Lilac_16 Start: 8634, Stop: 9200, Start Num: 17

Candidate Starts for Lilac_16:

(Start: 17 @8634 has 123 MA's), (43, 8772), (70, 8862), (73, 8871), (104, 8991), (110, 9018), (127, 9084),

Gene: Lilizi_16 Start: 8845, Stop: 9411, Start Num: 17

Candidate Starts for Lilizi_16:

(Start: 17 @8845 has 123 MA's), (43, 8983), (70, 9073), (73, 9082), (104, 9202), (110, 9229), (127, 9295),

Gene: Lilpickle_13 Start: 8353, Stop: 8919, Start Num: 17

Candidate Starts for Lilpickle_13:

(Start: 17 @8353 has 123 MA's), (43, 8491), (70, 8581), (73, 8590), (104, 8710), (110, 8737), (127, 8803),

Gene: LimaBean_8 Start: 6765, Stop: 7325, Start Num: 11

Candidate Starts for LimaBean_8:

(Start: 11 @6765 has 63 MA's), (40, 6912), (42, 6918), (48, 6942), (64, 6999), (111, 7152), (114, 7161), (131, 7224), (152, 7293),

Gene: Litotes_11 Start: 9218, Stop: 9790, Start Num: 6

Candidate Starts for Litotes_11:

(Start: 6 @9218 has 6 MA's), (39, 9380), (42, 9392), (44, 9398), (54, 9443), (59, 9461), (97, 9572), (99, 9578), (124, 9656), (129, 9686), (142, 9731), (143, 9734), (154, 9776), (156, 9779),

Gene: LittleTokyo_9 Start: 7047, Stop: 7634, Start Num: 2

Candidate Starts for LittleTokyo_9:

(Start: 2 @7047 has 28 MA's), (57, 7305), (66, 7329), (67, 7332), (72, 7347), (79, 7368), (93, 7413), (98, 7425), (103, 7443), (124, 7509), (129, 7539),

Gene: Loviatar_15 Start: 7027, Stop: 7578, Start Num: 11

Candidate Starts for Loviatar_15:

(Start: 11 @7027 has 63 MA's), (40, 7174), (48, 7204), (56, 7237), (60, 7252), (97, 7354), (111, 7405), (131, 7477), (137, 7504),

Gene: Lucy_7 Start: 6318, Stop: 6896, Start Num: 5

Candidate Starts for Lucy_7:

(Start: 5 @6318 has 52 MA's), (Start: 7 @6327 has 25 MA's), (19, 6372), (42, 6501), (44, 6507), (59, 6570), (64, 6585), (70, 6597), (95, 6678), (97, 6681), (99, 6687), (114, 6738), (115, 6741), (124, 6765), (129, 6795), (142, 6840), (152, 6870), (154, 6885), (156, 6888),

Gene: Lunar_10 Start: 7302, Stop: 7892, Start Num: 2

Candidate Starts for Lunar_10:

(Start: 2 @7302 has 28 MA's), (16, 7356), (38, 7482), (55, 7551), (57, 7560), (59, 7566), (67, 7587), (75, 7614), (79, 7626), (93, 7671), (124, 7767), (129, 7797), (137, 7830),

Gene: Lynlen_8 Start: 6779, Stop: 7339, Start Num: 11

Candidate Starts for Lynlen_8:

(Start: 11 @6779 has 63 MA's), (21, 6812), (40, 6926), (42, 6932), (48, 6956), (64, 7013), (69, 7022), (95, 7112), (131, 7238), (152, 7307),

Gene: MISSy_14 Start: 9186, Stop: 9752, Start Num: 17

Candidate Starts for MISSy_14:

(Start: 17 @9186 has 123 MA's), (43, 9324), (70, 9414), (73, 9423), (104, 9543), (110, 9570), (127, 9636),

Gene: MPhalcon_14 Start: 9186, Stop: 9752, Start Num: 17

Candidate Starts for MPhalcon_14:

(Start: 17 @9186 has 123 MA's), (43, 9324), (70, 9414), (73, 9423), (104, 9543), (110, 9570), (127, 9636),

Gene: MadamMonkfish_14 Start: 8564, Stop: 9130, Start Num: 17

Candidate Starts for MadamMonkfish_14:

(Start: 17 @8564 has 123 MA's), (43, 8702), (70, 8792), (73, 8801), (104, 8921), (110, 8948), (127, 9014),

Gene: Makoto_7 Start: 6327, Stop: 6905, Start Num: 5

Candidate Starts for Makoto_7:

(Start: 5 @6327 has 52 MA's), (Start: 7 @6336 has 25 MA's), (19, 6381), (42, 6510), (44, 6516), (59, 6579), (64, 6594), (70, 6606), (95, 6687), (97, 6690), (99, 6696), (114, 6747), (115, 6750), (124, 6774), (129, 6804), (142, 6849), (152, 6879), (154, 6894), (156, 6897),

Gene: MamaPearl_7 Start: 6380, Stop: 6949, Start Num: 7

Candidate Starts for MamaPearl_7:

(Start: 5 @6371 has 52 MA's), (Start: 7 @6380 has 25 MA's), (19, 6425), (42, 6554), (44, 6560), (59, 6623), (70, 6650), (97, 6734), (99, 6740), (114, 6791), (115, 6794), (120, 6806), (124, 6818), (129, 6848), (142, 6893), (152, 6923), (154, 6938), (156, 6941),

Gene: Manda_15 Start: 9648, Stop: 10214, Start Num: 17

Candidate Starts for Manda_15:

(Start: 17 @9648 has 123 MA's), (43, 9786), (70, 9876), (73, 9885), (104, 10005), (110, 10032), (127, 10098),

Gene: Maria1952_7 Start: 6344, Stop: 6925, Start Num: 5

Candidate Starts for Maria1952_7:

(Start: 5 @6344 has 52 MA's), (Start: 7 @6353 has 25 MA's), (19, 6398), (28, 6443), (42, 6527), (44, 6533), (70, 6623), (79, 6653), (95, 6704), (99, 6713), (124, 6791), (129, 6821), (152, 6896), (156, 6914),

Gene: Marshmallow_15 Start: 9678, Stop: 10244, Start Num: 17

Candidate Starts for Marshmallow_15:

(Start: 17 @9678 has 123 MA's), (43, 9816), (70, 9906), (73, 9915), (104, 10035), (110, 10062), (127, 10128),

Gene: Maxxinista_15 Start: 8613, Stop: 9179, Start Num: 17

Candidate Starts for Maxxinista_15:

(Start: 17 @8613 has 123 MA's), (43, 8751), (70, 8841), (73, 8850), (104, 8970), (110, 8997), (127, 9063),

Gene: MeganNoll_11 Start: 9242, Stop: 9820, Start Num: 5

Candidate Starts for MeganNoll_11:

(Start: 5 @9242 has 52 MA's), (Start: 7 @9251 has 25 MA's), (19, 9296), (42, 9425), (44, 9431), (54, 9476), (59, 9494), (64, 9509), (70, 9521), (97, 9605), (99, 9611), (114, 9662), (115, 9665), (124, 9689), (129, 9719), (135, 9740), (142, 9764), (152, 9794), (154, 9809), (156, 9812),

Gene: Melons_10 Start: 7302, Stop: 7892, Start Num: 2

Candidate Starts for Melons_10:

(Start: 2 @7302 has 28 MA's), (16, 7356), (38, 7482), (55, 7551), (57, 7560), (59, 7566), (67, 7587), (75, 7614), (79, 7626), (93, 7671), (124, 7767), (129, 7797), (137, 7830),

Gene: Mindy_15 Start: 9457, Stop: 10023, Start Num: 17

Candidate Starts for Mindy_15:

(Start: 17 @9457 has 123 MA's), (43, 9595), (70, 9685), (73, 9694), (104, 9814), (110, 9841), (127, 9907),

Gene: Miniwave_15 Start: 9876, Stop: 10442, Start Num: 17

Candidate Starts for Miniwave_15:

(Start: 17 @9876 has 123 MA's), (43, 10014), (70, 10104), (73, 10113), (104, 10233), (110, 10260), (127, 10326),

Gene: Misaeng_11 Start: 9290, Stop: 9868, Start Num: 5

Candidate Starts for Misaeng_11:

(Start: 5 @9290 has 52 MA's), (Start: 7 @9299 has 25 MA's), (19, 9344), (39, 9461), (42, 9473), (44, 9479), (59, 9542), (80, 9602), (99, 9659), (124, 9737), (129, 9767), (156, 9860),

Gene: Misfit_14 Start: 9230, Stop: 9796, Start Num: 17

Candidate Starts for Misfit_14:

(Start: 17 @9230 has 123 MA's), (43, 9368), (70, 9458), (73, 9467), (104, 9587), (110, 9614), (127, 9680),

Gene: Moki_7 Start: 6329, Stop: 6907, Start Num: 5

Candidate Starts for Moki_7:

(Start: 5 @6329 has 52 MA's), (Start: 7 @6338 has 25 MA's), (19, 6383), (42, 6512), (44, 6518), (59, 6581), (70, 6608), (97, 6692), (99, 6698), (114, 6749), (115, 6752), (120, 6764), (124, 6776), (129, 6806), (142, 6851), (152, 6881), (154, 6896), (156, 6899),

Gene: Moldemort_15 Start: 8888, Stop: 9454, Start Num: 17

Candidate Starts for Moldemort_15:

(Start: 17 @8888 has 123 MA's), (43, 9026), (70, 9116), (73, 9125), (104, 9245), (110, 9272), (127, 9338),

Gene: Mosby_14 Start: 9186, Stop: 9752, Start Num: 17

Candidate Starts for Mosby_14:

(Start: 17 @9186 has 123 MA's), (43, 9324), (70, 9414), (73, 9423), (104, 9543), (110, 9570), (127, 9636),

Gene: MrGloopy_11 Start: 9175, Stop: 9753, Start Num: 5

Candidate Starts for MrGloopy_11:

(Start: 5 @9175 has 52 MA's), (Start: 7 @9184 has 25 MA's), (19, 9229), (42, 9358), (44, 9364), (54, 9409), (59, 9427), (64, 9442), (67, 9448), (70, 9454), (97, 9538), (99, 9544), (114, 9595), (115, 9598), (124, 9622), (129, 9652), (135, 9673), (142, 9697), (152, 9727), (154, 9742), (156, 9745),

Gene: Murica_13 Start: 9142, Stop: 9708, Start Num: 17

Candidate Starts for Murica_13:

(Start: 17 @9142 has 123 MA's), (43, 9280), (70, 9370), (73, 9379), (104, 9499), (110, 9526), (127, 9592),

Gene: Murphy_14 Start: 8605, Stop: 9171, Start Num: 17

Candidate Starts for Murphy_14:

(Start: 17 @8605 has 123 MA's), (43, 8743), (70, 8833), (73, 8842), (104, 8962), (110, 8989), (127, 9055),

Gene: Myrale_15 Start: 9549, Stop: 10115, Start Num: 17

Candidate Starts for Myrale_15:

(Start: 17 @9549 has 123 MA's), (43, 9687), (70, 9777), (73, 9786), (104, 9906), (110, 9933), (127, 9999),

Gene: Nala_14 Start: 9186, Stop: 9752, Start Num: 17

Candidate Starts for Nala_14:

(Start: 17 @9186 has 123 MA's), (43, 9324), (70, 9414), (73, 9423), (104, 9543), (110, 9570), (127, 9636),

Gene: Nancia_7 Start: 6327, Stop: 6905, Start Num: 5

Candidate Starts for Nancia_7:

(Start: 5 @6327 has 52 MA's), (Start: 7 @6336 has 25 MA's), (19, 6381), (42, 6510), (44, 6516), (59, 6579), (70, 6606), (79, 6636), (95, 6687), (97, 6690), (99, 6696), (114, 6747), (115, 6750), (124, 6774), (129, 6804), (142, 6849), (152, 6879), (154, 6894), (156, 6897),

Gene: NelitzaMV_15 Start: 9748, Stop: 10314, Start Num: 17

Candidate Starts for NelitzaMV_15:

(Start: 17 @9748 has 123 MA's), (43, 9886), (70, 9976), (73, 9985), (104, 10105), (110, 10132), (127, 10198),

Gene: Nesbitt_8 Start: 6733, Stop: 7266, Start Num: 9

Candidate Starts for Nesbitt_8:

(Start: 9 @6733 has 6 MA's), (22, 6778), (Start: 25 @6790 has 2 MA's), (33, 6829), (35, 6844), (47, 6916), (53, 6937), (56, 6949), (58, 6955), (84, 7027), (88, 7036), (97, 7069), (127, 7150), (133, 7177), (160, 7249), (161, 7252),

Gene: Nicky22_9 Start: 7213, Stop: 7773, Start Num: 11

Candidate Starts for Nicky22_9:

(Start: 11 @7213 has 63 MA's), (40, 7360), (42, 7366), (48, 7390), (114, 7609), (131, 7672), (152, 7741),

Gene: Nimrod_14 Start: 9385, Stop: 9951, Start Num: 17

Candidate Starts for Nimrod_14:

(Start: 17 @9385 has 123 MA's), (43, 9523), (70, 9613), (73, 9622), (104, 9742), (110, 9769), (127, 9835),

Gene: NoSleep_15 Start: 8885, Stop: 9451, Start Num: 17

Candidate Starts for NoSleep_15:

(Start: 17 @8885 has 123 MA's), (43, 9023), (70, 9113), (73, 9122), (104, 9242), (110, 9269), (127, 9335),

Gene: Nubia_11 Start: 9213, Stop: 9782, Start Num: 7

Candidate Starts for Nubia_11:

(Start: 5 @9204 has 52 MA's), (Start: 7 @9213 has 25 MA's), (19, 9258), (39, 9375), (42, 9387), (44, 9393), (59, 9456), (70, 9483), (97, 9567), (99, 9573), (107, 9603), (124, 9651), (129, 9681), (156, 9774),

Gene: OMalley_7 Start: 6342, Stop: 6923, Start Num: 5

Candidate Starts for OMalley_7:

(Start: 5 @6342 has 52 MA's), (Start: 7 @6351 has 25 MA's), (19, 6396), (28, 6441), (39, 6513), (42, 6525), (44, 6531), (70, 6621), (79, 6651), (95, 6702), (99, 6711), (114, 6762), (115, 6765), (120, 6777), (124, 6789), (129, 6819), (137, 6852), (156, 6912),

Gene: Olliecat_8 Start: 6996, Stop: 7556, Start Num: 11

Candidate Starts for Olliecat_8:

(Start: 11 @6996 has 63 MA's), (40, 7146), (42, 7152), (80, 7281), (105, 7359), (111, 7383), (117, 7401), (129, 7449), (131, 7455), (137, 7482),

Gene: Orcanus_9 Start: 7095, Stop: 7682, Start Num: 2

Candidate Starts for Orcanus_9:

(Start: 2 @7095 has 28 MA's), (38, 7275), (51, 7323), (57, 7353), (59, 7359), (67, 7380), (72, 7395), (79, 7416), (87, 7437), (96, 7467), (107, 7509), (124, 7557), (137, 7620), (144, 7638),

Gene: OrionPax_15 Start: 8888, Stop: 9454, Start Num: 17

Candidate Starts for OrionPax_15:

(Start: 17 @8888 has 123 MA's), (43, 9026), (70, 9116), (73, 9125), (104, 9245), (110, 9272), (127, 9338),

Gene: OurGirlNessie_7 Start: 6318, Stop: 6896, Start Num: 5

Candidate Starts for OurGirlNessie_7:

(Start: 5 @6318 has 52 MA's), (Start: 7 @6327 has 25 MA's), (19, 6372), (42, 6501), (44, 6507), (59, 6570), (64, 6585), (70, 6597), (79, 6627), (95, 6678), (97, 6681), (99, 6687), (114, 6738), (115, 6741), (124, 6765), (129, 6795), (142, 6840), (152, 6870), (154, 6885), (156, 6888),

Gene: Oxynfrius_11 Start: 9226, Stop: 9795, Start Num: 7

Candidate Starts for Oxynfrius_11:

(Start: 5 @9217 has 52 MA's), (Start: 7 @9226 has 25 MA's), (19, 9271), (39, 9388), (42, 9400), (44, 9406), (59, 9469), (70, 9496), (97, 9580), (99, 9586), (107, 9616), (124, 9664), (129, 9694), (156, 9787),

Gene: PFR1_06 Start: 6360, Stop: 6935, Start Num: 10

Candidate Starts for PFR1_06:

(10, 6360), (12, 6363), (15, 6375), (29, 6438), (50, 6546), (54, 6567), (59, 6585), (74, 6633), (77, 6645), (104, 6729), (119, 6780), (121, 6783), (122, 6786), (123, 6789), (151, 6903), (156, 6924), (157, 6927),

Gene: PFR2_06 Start: 6360, Stop: 6935, Start Num: 10

Candidate Starts for PFR2_06:

(10, 6360), (12, 6363), (15, 6375), (29, 6438), (50, 6546), (54, 6567), (59, 6585), (74, 6633), (77, 6645), (104, 6729), (119, 6780), (121, 6783), (122, 6786), (123, 6789), (151, 6903), (156, 6924), (157, 6927),

Gene: Palpatine_14 Start: 9183, Stop: 9749, Start Num: 17

Candidate Starts for Palpatine_14:

(Start: 17 @9183 has 123 MA's), (43, 9321), (70, 9411), (73, 9420), (104, 9540), (110, 9567), (127, 9633),

Gene: Paperbeatsrock_16 Start: 10120, Stop: 10686, Start Num: 17

Candidate Starts for Paperbeatsrock_16:

(Start: 17 @10120 has 123 MA's), (43, 10258), (70, 10348), (73, 10357), (104, 10477), (110, 10504), (127, 10570),

Gene: PartyCup_11 Start: 9265, Stop: 9837, Start Num: 6

Candidate Starts for PartyCup_11:

(Start: 6 @9265 has 6 MA's), (39, 9427), (42, 9439), (44, 9445), (54, 9490), (59, 9508), (97, 9619), (99, 9625), (124, 9703), (129, 9733), (142, 9778), (143, 9781), (154, 9823), (156, 9826),

Gene: Pat3_14 Start: 8388, Stop: 8954, Start Num: 17

Candidate Starts for Pat3_14:

(Start: 17 @8388 has 123 MA's), (43, 8526), (70, 8616), (73, 8625), (104, 8745), (110, 8772), (127, 8838),

Gene: Peas_9 Start: 7175, Stop: 7768, Start Num: 8

Candidate Starts for Peas_9:

(Start: 8 @7175 has 13 MA's), (14, 7187), (26, 7232), (43, 7334), (45, 7340), (49, 7355), (51, 7358), (67, 7418), (78, 7451), (121, 7592), (148, 7715),

Gene: PeggyLeg03_9 Start: 7215, Stop: 7805, Start Num: 8

Candidate Starts for PeggyLeg03_9:

(Start: 8 @7215 has 13 MA's), (14, 7227), (26, 7272), (104, 7569), (121, 7629), (122, 7632), (142, 7731), (148, 7752), (162, 7791),

Gene: Petra64142_15 Start: 9601, Stop: 10167, Start Num: 17

Candidate Starts for Petra64142_15:

(Start: 17 @9601 has 123 MA's), (43, 9739), (70, 9829), (73, 9838), (104, 9958), (110, 9985), (127, 10051),

Gene: Phaja_14 Start: 9338, Stop: 9904, Start Num: 17

Candidate Starts for Phaja_14:

(Start: 17 @9338 has 123 MA's), (43, 9476), (70, 9566), (73, 9575), (104, 9695), (110, 9722), (127, 9788),

Gene: Pharsalus_15 Start: 9920, Stop: 10486, Start Num: 17

Candidate Starts for Pharsalus_15:

(Start: 17 @9920 has 123 MA's), (43, 10058), (70, 10148), (73, 10157), (104, 10277), (110, 10304), (127, 10370),

Gene: PhatBacter_14 Start: 9186, Stop: 9752, Start Num: 17

Candidate Starts for PhatBacter_14:

(Start: 17 @9186 has 123 MA's), (43, 9324), (70, 9414), (73, 9423), (104, 9543), (110, 9570), (127, 9636),

Gene: Phaux_13 Start: 9186, Stop: 9752, Start Num: 17

Candidate Starts for Phaux_13:

(Start: 17 @9186 has 123 MA's), (43, 9324), (70, 9414), (73, 9423), (104, 9543), (110, 9570), (127, 9636),

Gene: Phisb_8 Start: 6756, Stop: 7316, Start Num: 11

Candidate Starts for Phisb_8:

(Start: 11 @6756 has 63 MA's), (21, 6789), (40, 6903), (42, 6909), (48, 6933), (64, 6990), (69, 6999), (95, 7089), (131, 7215), (152, 7284),

Gene: PhluffyCoco_8 Start: 6714, Stop: 7301, Start Num: 2

Candidate Starts for PhluffyCoco_8:

(Start: 2 @6714 has 28 MA's), (35, 6861), (38, 6894), (50, 6939), (56, 6969), (57, 6972), (70, 7005), (76, 7029), (79, 7035), (93, 7080), (98, 7092), (103, 7110), (106, 7119), (124, 7176), (128, 7203), (129, 7206),

Gene: Phrux_14 Start: 8884, Stop: 9450, Start Num: 17

Candidate Starts for Phrux_14:

(Start: 17 @8884 has 123 MA's), (43, 9022), (70, 9112), (73, 9121), (104, 9241), (110, 9268), (127, 9334),

Gene: PinkFriday_7 Start: 6345, Stop: 6926, Start Num: 5

Candidate Starts for PinkFriday_7:

(Start: 5 @6345 has 52 MA's), (Start: 7 @6354 has 25 MA's), (19, 6399), (28, 6444), (42, 6528), (44, 6534), (70, 6624), (79, 6654), (95, 6705), (99, 6714), (124, 6792), (129, 6822), (152, 6897), (156, 6915),

Gene: PitaDog_7 Start: 6318, Stop: 6896, Start Num: 5

Candidate Starts for PitaDog_7:

(Start: 5 @6318 has 52 MA's), (Start: 7 @6327 has 25 MA's), (19, 6372), (42, 6501), (44, 6507), (59, 6570), (64, 6585), (70, 6597), (79, 6627), (95, 6678), (97, 6681), (99, 6687), (114, 6738), (115, 6741), (124, 6765), (129, 6795), (142, 6840), (152, 6870), (154, 6885), (156, 6888),

Gene: Policronamos_14 Start: 9186, Stop: 9752, Start Num: 17

Candidate Starts for Policronamos_14:

(Start: 17 @9186 has 123 MA's), (43, 9324), (70, 9414), (73, 9423), (104, 9543), (110, 9570), (127, 9636),

Gene: Polka_9 Start: 7141, Stop: 7731, Start Num: 2

Candidate Starts for Polka_9:

(Start: 2 @7141 has 28 MA's), (16, 7195), (38, 7321), (55, 7390), (57, 7399), (59, 7405), (67, 7426), (75, 7453), (79, 7465), (93, 7510), (124, 7606), (129, 7636), (137, 7669),

Gene: Porky_13 Start: 8458, Stop: 9024, Start Num: 17

Candidate Starts for Porky_13:

(Start: 17 @8458 has 123 MA's), (43, 8596), (70, 8686), (73, 8695), (104, 8815), (110, 8842), (127, 8908),

Gene: Potatoes_11 Start: 9236, Stop: 9814, Start Num: 5

Candidate Starts for Potatoes_11:

(Start: 5 @9236 has 52 MA's), (Start: 7 @9245 has 25 MA's), (19, 9290), (42, 9419), (44, 9425), (54, 9470), (59, 9488), (64, 9503), (70, 9515), (95, 9596), (97, 9599), (99, 9605), (114, 9656), (115, 9659), (120, 9671), (124, 9683), (129, 9713), (135, 9734), (142, 9758), (152, 9788), (154, 9803), (156, 9806),

Gene: Preamble_7 Start: 6328, Stop: 6906, Start Num: 5

Candidate Starts for Preamble_7:

(Start: 5 @6328 has 52 MA's), (Start: 7 @6337 has 25 MA's), (19, 6382), (42, 6511), (44, 6517), (70, 6607), (80, 6640), (95, 6688), (99, 6697), (114, 6748), (115, 6751), (120, 6763), (124, 6775), (129, 6805), (135, 6826), (142, 6850), (152, 6880), (154, 6895), (156, 6898),

Gene: Pterodactyl_7 Start: 6319, Stop: 6897, Start Num: 5

Candidate Starts for Pterodactyl_7:

(Start: 5 @6319 has 52 MA's), (Start: 7 @6328 has 25 MA's), (19, 6373), (42, 6502), (44, 6508), (59, 6571), (64, 6586), (70, 6598), (95, 6679), (97, 6682), (99, 6688), (114, 6739), (115, 6742), (124, 6766), (129, 6796), (142, 6841), (152, 6871), (154, 6886), (156, 6889),

Gene: Pucara_9 Start: 7174, Stop: 7767, Start Num: 8

Candidate Starts for Pucara_9:

(Start: 8 @7174 has 13 MA's), (14, 7186), (26, 7231), (43, 7333), (45, 7339), (49, 7354), (51, 7357), (67, 7417), (78, 7450), (121, 7591), (122, 7594), (148, 7714),

Gene: Pumancara_7 Start: 6344, Stop: 6925, Start Num: 5

Candidate Starts for Pumancara_7:

(Start: 5 @6344 has 52 MA's), (Start: 7 @6353 has 25 MA's), (19, 6398), (28, 6443), (42, 6527), (44, 6533), (70, 6623), (79, 6653), (95, 6704), (99, 6713), (124, 6791), (129, 6821), (152, 6896), (156, 6914),

Gene: Pumpkin_15 Start: 8701, Stop: 9267, Start Num: 17

Candidate Starts for Pumpkin_15:

(Start: 17 @8701 has 123 MA's), (43, 8839), (70, 8929), (73, 8938), (104, 9058), (110, 9085), (127, 9151),

Gene: QMacho_9 Start: 7246, Stop: 7806, Start Num: 11

Candidate Starts for QMacho_9:

(Start: 11 @7246 has 63 MA's), (40, 7393), (42, 7399), (48, 7423), (114, 7642), (131, 7705), (152, 7774),

Gene: Quallification_16 Start: 9885, Stop: 10451, Start Num: 17

Candidate Starts for Quallification_16:

(Start: 17 @9885 has 123 MA's), (43, 10023), (70, 10113), (73, 10122), (104, 10242), (110, 10269), (127, 10335),

Gene: Quenya_9 Start: 6901, Stop: 7452, Start Num: 11

Candidate Starts for Quenya_9:

(Start: 11 @6901 has 63 MA's), (40, 7048), (48, 7078), (56, 7111), (60, 7126), (105, 7255), (111, 7279), (114, 7288), (131, 7351),

Gene: RAP15_11 Start: 9242, Stop: 9820, Start Num: 5

Candidate Starts for RAP15_11:

(Start: 5 @9242 has 52 MA's), (Start: 7 @9251 has 25 MA's), (19, 9296), (42, 9425), (44, 9431), (54, 9476), (59, 9494), (64, 9509), (70, 9521), (97, 9605), (99, 9611), (114, 9662), (115, 9665), (124, 9689), (129, 9719), (135, 9740), (142, 9764), (152, 9794), (154, 9809), (156, 9812),

Gene: Rakim_16 Start: 9792, Stop: 10358, Start Num: 17

Candidate Starts for Rakim_16:

(Start: 17 @9792 has 123 MA's), (43, 9930), (70, 10020), (73, 10029), (104, 10149), (110, 10176), (127, 10242),

Gene: RcigaStruga_11 Start: 9225, Stop: 9803, Start Num: 5

Candidate Starts for RcigaStruga_11:

(Start: 5 @9225 has 52 MA's), (Start: 7 @9234 has 25 MA's), (19, 9279), (39, 9396), (42, 9408), (44, 9414), (59, 9477), (99, 9594), (124, 9672), (129, 9702), (156, 9795),

Gene: RedFox_8 Start: 6714, Stop: 7301, Start Num: 2

Candidate Starts for RedFox_8:

(Start: 2 @6714 has 28 MA's), (35, 6861), (38, 6894), (50, 6939), (56, 6969), (57, 6972), (70, 7005), (76, 7029), (79, 7035), (93, 7080), (98, 7092), (103, 7110), (106, 7119), (124, 7176), (128, 7203), (129, 7206),

Gene: Renna12_9 Start: 6911, Stop: 7501, Start Num: 2

Candidate Starts for Renna12_9:

(Start: 2 @6911 has 28 MA's), (Start: 25 @7004 has 2 MA's), (38, 7091), (56, 7166), (57, 7169), (67, 7196), (70, 7202), (76, 7226), (79, 7232), (93, 7280), (124, 7376), (128, 7403), (129, 7406),

Gene: Rimmer_14 Start: 9245, Stop: 9811, Start Num: 17

Candidate Starts for Rimmer_14:

(Start: 17 @9245 has 123 MA's), (43, 9383), (70, 9473), (73, 9482), (104, 9602), (110, 9629), (127, 9695),

Gene: Riovina_7 Start: 6351, Stop: 6923, Start Num: 7

Candidate Starts for Riovina_7:

(Start: 5 @6342 has 52 MA's), (Start: 7 @6351 has 25 MA's), (19, 6396), (28, 6441), (39, 6513), (42, 6525), (44, 6531), (70, 6621), (79, 6651), (95, 6702), (99, 6711), (114, 6762), (115, 6765), (120, 6777), (124, 6789), (129, 6819), (137, 6852), (156, 6912),

Gene: RiverMonster_14 Start: 8898, Stop: 9464, Start Num: 17

Candidate Starts for RiverMonster_14:

(Start: 17 @8898 has 123 MA's), (43, 9036), (70, 9126), (73, 9135), (104, 9255), (110, 9282), (127, 9348),

Gene: Riverdale_11 Start: 9173, Stop: 9751, Start Num: 5

Candidate Starts for Riverdale_11:

(Start: 5 @9173 has 52 MA's), (Start: 7 @9182 has 25 MA's), (19, 9227), (42, 9356), (44, 9362), (54, 9407), (59, 9425), (64, 9440), (70, 9452), (97, 9536), (99, 9542), (114, 9593), (115, 9596), (124, 9620), (129, 9650), (135, 9671), (142, 9695), (152, 9725), (154, 9740), (156, 9743),

Gene: Rollins_7 Start: 6593, Stop: 7153, Start Num: 11

Candidate Starts for Rollins_7:

(Start: 11 @6593 has 63 MA's), (95, 6926), (117, 6998),

Gene: Rona_8 Start: 6996, Stop: 7553, Start Num: 11

Candidate Starts for Rona_8:

(Start: 11 @6996 has 63 MA's), (40, 7143), (48, 7173), (95, 7326), (114, 7389), (131, 7452), (152, 7521),

Gene: Rowa_8 Start: 6493, Stop: 7023, Start Num: 9

Candidate Starts for Rowa_8:

(Start: 9 @6493 has 6 MA's), (22, 6538), (33, 6589), (46, 6673), (54, 6700), (62, 6730), (81, 6775), (89, 6799), (97, 6826), (158, 7003), (160, 7006), (161, 7009),

Gene: Rozby_11 Start: 9173, Stop: 9751, Start Num: 5

Candidate Starts for Rozby_11:

(Start: 5 @9173 has 52 MA's), (Start: 7 @9182 has 25 MA's), (19, 9227), (42, 9356), (44, 9362), (54, 9407), (59, 9425), (64, 9440), (70, 9452), (97, 9536), (99, 9542), (114, 9593), (115, 9596), (120, 9608), (124, 9620), (129, 9650), (135, 9671), (142, 9695), (152, 9725), (154, 9740), (156, 9743),

Gene: Ruchi_9 Start: 7376, Stop: 7963, Start Num: 2

Candidate Starts for Ruchi_9:

(Start: 2 @7376 has 28 MA's), (38, 7556), (54, 7622), (57, 7634), (59, 7640), (67, 7661), (72, 7676), (79, 7697), (124, 7838), (129, 7868),

Gene: Saints25_15 Start: 8807, Stop: 9373, Start Num: 17

Candidate Starts for Saints25_15:

(Start: 17 @8807 has 123 MA's), (43, 8945), (70, 9035), (73, 9044), (104, 9164), (110, 9191), (127, 9257),

Gene: SanaSana_9 Start: 7016, Stop: 7567, Start Num: 11

Candidate Starts for SanaSana_9:

(Start: 11 @7016 has 63 MA's), (40, 7163), (48, 7193), (56, 7226), (60, 7241), (97, 7343), (105, 7370), (111, 7394), (131, 7466), (137, 7493),

Gene: SansAfet_8 Start: 6776, Stop: 7336, Start Num: 11

Candidate Starts for SansAfet_8:

(Start: 11 @6776 has 63 MA's), (40, 6923), (42, 6929), (48, 6953), (64, 7010), (69, 7019), (111, 7163), (114, 7172), (131, 7235), (152, 7304),

Gene: SarBear_8 Start: 6739, Stop: 7299, Start Num: 11

Candidate Starts for SarBear_8:

(Start: 11 @6739 has 63 MA's), (40, 6886), (42, 6892), (48, 6916), (114, 7135), (131, 7198), (152, 7267),

Gene: Sassay_14 Start: 9186, Stop: 9752, Start Num: 17

Candidate Starts for Sassay_14:

(Start: 17 @9186 has 123 MA's), (43, 9324), (70, 9414), (73, 9423), (104, 9543), (110, 9570), (127, 9636),

Gene: Savage2526_11 Start: 9236, Stop: 9814, Start Num: 5

Candidate Starts for Savage2526_11:

(Start: 5 @9236 has 52 MA's), (Start: 7 @9245 has 25 MA's), (19, 9290), (42, 9419), (44, 9425), (54, 9470), (59, 9488), (64, 9503), (70, 9515), (97, 9599), (99, 9605), (114, 9656), (115, 9659), (124, 9683), (129, 9713), (135, 9734), (142, 9758), (152, 9788), (154, 9803), (156, 9806),

Gene: Schmidt_10 Start: 7341, Stop: 7862, Start Num: 11

Candidate Starts for Schmidt_10:

(3, 7305), (Start: 11 @7341 has 63 MA's), (Start: 25 @7392 has 2 MA's), (30, 7416), (32, 7422), (37, 7467), (43, 7494), (54, 7542), (59, 7551), (61, 7560), (86, 7632), (94, 7662), (107, 7704), (112, 7719), (129, 7782), (155, 7854),

Gene: Scuttle_11 Start: 9251, Stop: 9820, Start Num: 7

Candidate Starts for Scuttle_11:

(Start: 5 @9242 has 52 MA's), (Start: 7 @9251 has 25 MA's), (19, 9296), (42, 9425), (44, 9431), (54, 9476), (59, 9494), (64, 9509), (70, 9521), (97, 9605), (99, 9611), (114, 9662), (115, 9665), (124, 9689), (129, 9719), (135, 9740), (142, 9764), (152, 9794), (154, 9809), (156, 9812),

Gene: Sergei_7 Start: 6353, Stop: 6925, Start Num: 7

Candidate Starts for Sergei_7:

(Start: 5 @6344 has 52 MA's), (Start: 7 @6353 has 25 MA's), (19, 6398), (28, 6443), (42, 6527), (44, 6533), (70, 6623), (79, 6653), (95, 6704), (99, 6713), (124, 6791), (129, 6821), (152, 6896), (156, 6914),

Gene: ShamWow_15 Start: 9679, Stop: 10245, Start Num: 17

Candidate Starts for ShamWow_15:

(Start: 17 @9679 has 123 MA's), (43, 9817), (70, 9907), (73, 9916), (104, 10036), (110, 10063), (127, 10129),

Gene: Sharkboy_8 Start: 6995, Stop: 7552, Start Num: 11

Candidate Starts for Sharkboy_8:

(Start: 11 @6995 has 63 MA's), (40, 7142), (48, 7172), (95, 7325), (114, 7388), (131, 7451), (152, 7520),

Gene: Shayna_7 Start: 6598, Stop: 7158, Start Num: 11

Candidate Starts for Shayna_7:

(Start: 11 @6598 has 63 MA's), (24, 6643), (40, 6748), (42, 6754), (83, 6895), (90, 6916), (97, 6934), (120, 7009), (131, 7057),

Gene: ShereKhan_16 Start: 10126, Stop: 10692, Start Num: 17

Candidate Starts for ShereKhan_16:

(Start: 17 @10126 has 123 MA's), (43, 10264), (70, 10354), (73, 10363), (104, 10483), (110, 10510), (127, 10576),

Gene: Simpliphy_15 Start: 8888, Stop: 9454, Start Num: 17

Candidate Starts for Simpliphy_15:

(Start: 17 @8888 has 123 MA's), (43, 9026), (70, 9116), (73, 9125), (104, 9245), (110, 9272), (127, 9338),

Gene: SirDuracell_14 Start: 8345, Stop: 8911, Start Num: 17

Candidate Starts for SirDuracell_14:

(Start: 17 @8345 has 123 MA's), (43, 8483), (70, 8573), (73, 8582), (104, 8702), (110, 8729), (127, 8795),

Gene: Skylord_7 Start: 6533, Stop: 7093, Start Num: 11

Candidate Starts for Skylord_7:

(Start: 11 @6533 has 63 MA's), (95, 6866), (117, 6938),

Gene: Slay_8 Start: 7215, Stop: 7775, Start Num: 11

Candidate Starts for Slay_8:

(Start: 11 @7215 has 63 MA's), (40, 7362), (42, 7368), (48, 7392), (131, 7674), (152, 7743),

Gene: SophKB_15 Start: 9678, Stop: 10244, Start Num: 17

Candidate Starts for SophKB_15:

(Start: 17 @9678 has 123 MA's), (43, 9816), (70, 9906), (73, 9915), (104, 10035), (110, 10062), (127, 10128),

Gene: Sotrice96_15 Start: 9634, Stop: 10200, Start Num: 17

Candidate Starts for Sotrice96_15:

(Start: 17 @9634 has 123 MA's), (43, 9772), (70, 9862), (73, 9871), (104, 9991), (110, 10018), (127, 10084),

Gene: Splinter_12 Start: 8930, Stop: 9409, Start Num: 25

Candidate Starts for Splinter_12:

(Start: 13 @8885 has 8 MA's), (Start: 25 @8930 has 2 MA's), (37, 9005), (50, 9059), (59, 9089), (71, 9119), (88, 9176), (94, 9200), (108, 9245), (110, 9251), (111, 9254), (129, 9320), (137, 9338), (145, 9356), (155, 9395),

Gene: Squircle_8 Start: 6995, Stop: 7555, Start Num: 11

Candidate Starts for Squircle_8:

(Start: 11 @6995 has 63 MA's), (40, 7145), (42, 7151), (80, 7280), (105, 7358), (111, 7382), (117, 7400), (129, 7448), (131, 7454), (137, 7481),

Gene: Stank_16 Start: 9133, Stop: 9699, Start Num: 17

Candidate Starts for Stank_16:

(Start: 17 @9133 has 123 MA's), (43, 9271), (70, 9361), (73, 9370), (104, 9490), (110, 9517), (127, 9583),

Gene: Stark_15 Start: 8901, Stop: 9467, Start Num: 17

Candidate Starts for Stark_15:

(Start: 17 @8901 has 123 MA's), (43, 9039), (70, 9129), (73, 9138), (104, 9258), (110, 9285), (127, 9351),

Gene: StellaBean_15 Start: 9678, Stop: 10244, Start Num: 17

Candidate Starts for StellaBean_15:

(Start: 17 @9678 has 123 MA's), (43, 9816), (70, 9906), (73, 9915), (104, 10035), (110, 10062), (127, 10128),

Gene: StolenFromERC_16 Start: 9133, Stop: 9699, Start Num: 17

Candidate Starts for StolenFromERC_16:

(Start: 17 @9133 has 123 MA's), (43, 9271), (70, 9361), (73, 9370), (104, 9490), (110, 9517), (127, 9583),

Gene: Stoor_8 Start: 7013, Stop: 7564, Start Num: 11

Candidate Starts for Stoor_8:

(Start: 11 @7013 has 63 MA's), (40, 7160), (48, 7190), (56, 7223), (60, 7238), (97, 7340), (105, 7367), (111, 7391), (131, 7463), (137, 7490),

Gene: Stromboli_8 Start: 7014, Stop: 7565, Start Num: 11

Candidate Starts for Stromboli_8:

(Start: 11 @7014 has 63 MA's), (40, 7161), (48, 7191), (56, 7224), (60, 7239), (111, 7392), (131, 7464), (137, 7491), (159, 7560),

Gene: Success_54 Start: 30512, Stop: 31111, Start Num: 9

Candidate Starts for Success_54:

(Start: 9 @30512 has 6 MA's), (18, 30536), (56, 30731), (88, 30824), (109, 30893), (119, 30923), (131, 30953), (161, 31052),

Gene: SunnyD_7 Start: 6598, Stop: 7158, Start Num: 11

Candidate Starts for SunnyD_7:

(Start: 11 @6598 has 63 MA's), (24, 6643), (40, 6748), (42, 6754), (83, 6895), (90, 6916), (97, 6934), (120, 7009), (131, 7057),

Gene: Supakev_7 Start: 6344, Stop: 6925, Start Num: 5

Candidate Starts for Supakev_7:

(Start: 5 @6344 has 52 MA's), (Start: 7 @6353 has 25 MA's), (19, 6398), (28, 6443), (42, 6527), (44, 6533), (70, 6623), (79, 6653), (95, 6704), (99, 6713), (124, 6791), (129, 6821), (152, 6896), (156, 6914),

Gene: Suppi_11 Start: 9265, Stop: 9837, Start Num: 6

Candidate Starts for Suppi_11:

(Start: 6 @9265 has 6 MA's), (39, 9427), (42, 9439), (44, 9445), (54, 9490), (97, 9619), (99, 9625), (124, 9703), (129, 9733), (142, 9778), (143, 9781), (154, 9823), (156, 9826),

Gene: Swervy_8 Start: 6739, Stop: 7299, Start Num: 11

Candidate Starts for Swervy_8:

(Start: 11 @6739 has 63 MA's), (40, 6886), (42, 6892), (48, 6916), (114, 7135), (131, 7198), (152, 7267),

Gene: TBrady12_16 Start: 9130, Stop: 9696, Start Num: 17

Candidate Starts for TBrady12_16:

(Start: 17 @9130 has 123 MA's), (43, 9268), (70, 9358), (73, 9367), (104, 9487), (110, 9514), (127, 9580),

Gene: TZGordon_14 Start: 9027, Stop: 9551, Start Num: 13

Candidate Starts for TZGordon_14:

(Start: 13 @9027 has 8 MA's), (Start: 25 @9072 has 2 MA's), (37, 9147), (50, 9201), (59, 9231), (71, 9261), (88, 9318), (94, 9342), (108, 9387), (111, 9396), (129, 9462), (137, 9480), (145, 9498), (155, 9537),

Gene: Tarkin_16 Start: 10129, Stop: 10695, Start Num: 17

Candidate Starts for Tarkin_16:

(Start: 17 @10129 has 123 MA's), (43, 10267), (70, 10357), (73, 10366), (104, 10486), (110, 10513), (127, 10579),

Gene: TattModd_11 Start: 9236, Stop: 9814, Start Num: 5

Candidate Starts for TattModd_11:

(Start: 5 @9236 has 52 MA's), (Start: 7 @9245 has 25 MA's), (19, 9290), (42, 9419), (44, 9425), (54, 9470), (59, 9488), (64, 9503), (67, 9509), (70, 9515), (97, 9599), (99, 9605), (114, 9656), (115, 9659), (124, 9683), (129, 9713), (135, 9734), (142, 9758), (152, 9788), (154, 9803), (156, 9806),

Gene: TaylorSipht_9 Start: 7181, Stop: 7768, Start Num: 2

Candidate Starts for TaylorSipht_9:

(Start: 2 @7181 has 28 MA's), (38, 7361), (50, 7406), (57, 7439), (59, 7445), (67, 7466), (72, 7481), (74, 7487), (79, 7502), (124, 7643), (137, 7706),

Gene: Teagster_7 Start: 6601, Stop: 7158, Start Num: 11

Candidate Starts for Teagster_7:

(Start: 11 @6601 has 63 MA's), (24, 6646), (40, 6751), (42, 6757), (90, 6916), (97, 6934), (120, 7009), (131, 7057), (149, 7120),

Gene: TeardropMSU_14 Start: 9586, Stop: 10152, Start Num: 17

Candidate Starts for TeardropMSU_14:

(Start: 17 @9586 has 123 MA's), (43, 9724), (70, 9814), (73, 9823), (104, 9943), (110, 9970), (127, 10036),

Gene: Teaspoon_14 Start: 8583, Stop: 9149, Start Num: 17

Candidate Starts for Teaspoon_14:

(Start: 17 @8583 has 123 MA's), (43, 8721), (70, 8811), (73, 8820), (104, 8940), (110, 8967), (127, 9033),

Gene: Temper16_7 Start: 6353, Stop: 6925, Start Num: 7

Candidate Starts for Temper16_7:

(Start: 5 @6344 has 52 MA's), (Start: 7 @6353 has 25 MA's), (19, 6398), (28, 6443), (42, 6527), (44, 6533), (70, 6623), (79, 6653), (95, 6704), (99, 6713), (124, 6791), (129, 6821), (152, 6896), (156, 6914),

Gene: Terminus_14 Start: 9230, Stop: 9796, Start Num: 17

Candidate Starts for Terminus_14:

(Start: 17 @9230 has 123 MA's), (43, 9368), (70, 9458), (73, 9467), (104, 9587), (110, 9614), (127, 9680),

Gene: Thresher_15 Start: 9891, Stop: 10457, Start Num: 17

Candidate Starts for Thresher_15:

(Start: 17 @9891 has 123 MA's), (43, 10029), (70, 10119), (73, 10128), (104, 10248), (110, 10275), (127, 10341),

Gene: TinaLin_15 Start: 9599, Stop: 10123, Start Num: 13

Candidate Starts for TinaLin_15:

(Start: 13 @9599 has 8 MA's), (41, 9740), (50, 9773), (88, 9890), (94, 9914), (107, 9956), (111, 9968), (129, 10034), (137, 10052), (145, 10070), (155, 10109), (156, 10112),

Gene: Tomaszewski_14 Start: 9279, Stop: 9845, Start Num: 17

Candidate Starts for Tomaszewski_14:

(Start: 17 @9279 has 123 MA's), (43, 9417), (70, 9507), (73, 9516), (104, 9636), (110, 9663), (127, 9729),

Gene: Toto_15 Start: 9679, Stop: 10245, Start Num: 17

Candidate Starts for Toto_15:

(Start: 17 @9679 has 123 MA's), (43, 9817), (70, 9907), (73, 9916), (104, 10036), (110, 10063), (127, 10129),

Gene: Traaww1_13 Start: 9324, Stop: 9890, Start Num: 17

Candidate Starts for Traaww1_13:

(Start: 17 @9324 has 123 MA's), (43, 9462), (70, 9552), (73, 9561), (104, 9681), (110, 9708), (127, 9774),

Gene: Tuco_15 Start: 9678, Stop: 10244, Start Num: 17

Candidate Starts for Tuco_15:

(Start: 17 @9678 has 123 MA's), (43, 9816), (70, 9906), (73, 9915), (104, 10035), (110, 10062), (127, 10128),

Gene: TukTuk_8 Start: 6739, Stop: 7299, Start Num: 11

Candidate Starts for TukTuk_8:

(Start: 11 @6739 has 63 MA's), (40, 6886), (42, 6892), (48, 6916), (114, 7135), (131, 7198), (152, 7267),

Gene: Ukulele_14 Start: 8901, Stop: 9467, Start Num: 17

Candidate Starts for Ukulele_14:

(Start: 17 @8901 has 123 MA's), (43, 9039), (70, 9129), (73, 9138), (104, 9258), (110, 9285), (127, 9351),

Gene: Urla_7 Start: 6374, Stop: 6952, Start Num: 5

Candidate Starts for Urla_7:

(Start: 5 @6374 has 52 MA's), (Start: 7 @6383 has 25 MA's), (19, 6428), (42, 6557), (44, 6563), (54, 6608), (59, 6626), (70, 6653), (97, 6737), (99, 6743), (114, 6794), (115, 6797), (120, 6809), (124, 6821), (129, 6851), (142, 6896), (152, 6926), (154, 6941), (156, 6944),

Gene: Vallejo_11 Start: 9183, Stop: 9752, Start Num: 7

Candidate Starts for Vallejo_11:

(Start: 5 @9174 has 52 MA's), (Start: 7 @9183 has 25 MA's), (19, 9228), (42, 9357), (44, 9363), (54, 9408), (59, 9426), (64, 9441), (70, 9453), (97, 9537), (99, 9543), (114, 9594), (115, 9597), (124, 9621), (129, 9651), (135, 9672), (142, 9696), (152, 9726), (154, 9741), (156, 9744),

Gene: Vendetta_12 Start: 8930, Stop: 9409, Start Num: 25

Candidate Starts for Vendetta_12:

(Start: 13 @8885 has 8 MA's), (Start: 25 @8930 has 2 MA's), (37, 9005), (50, 9059), (59, 9089), (71, 9119), (88, 9176), (94, 9200), (108, 9245), (110, 9251), (111, 9254), (129, 9320), (137, 9338), (145, 9356), (155, 9395),

Gene: Vitas_7 Start: 6533, Stop: 7093, Start Num: 11

Candidate Starts for Vitas_7:

(Start: 11 @6533 has 63 MA's), (95, 6866), (117, 6938), (153, 7064),

Gene: Vulpecula_9 Start: 7452, Stop: 8039, Start Num: 2

Candidate Starts for Vulpecula_9:

(Start: 2 @7452 has 28 MA's), (38, 7632), (54, 7698), (57, 7710), (59, 7716), (67, 7737), (72, 7752), (79, 7773), (124, 7914), (129, 7944),

Gene: Vulture_7 Start: 6342, Stop: 6923, Start Num: 5

Candidate Starts for Vulture_7:

(Start: 5 @6342 has 52 MA's), (Start: 7 @6351 has 25 MA's), (19, 6396), (28, 6441), (39, 6513), (42, 6525), (44, 6531), (70, 6621), (72, 6630), (79, 6651), (95, 6702), (99, 6711), (114, 6762), (115, 6765), (120, 6777), (124, 6789), (129, 6819), (137, 6852), (156, 6912),

Gene: WalkingDead_8 Start: 7002, Stop: 7553, Start Num: 11

Candidate Starts for WalkingDead_8:

(Start: 11 @7002 has 63 MA's), (40, 7149), (48, 7179), (56, 7212), (60, 7227), (97, 7329), (111, 7380), (131, 7452), (137, 7479), (159, 7548),

Gene: Wawa_11 Start: 9211, Stop: 9789, Start Num: 5

Candidate Starts for Wawa_11:

(Start: 5 @9211 has 52 MA's), (Start: 7 @9220 has 25 MA's), (19, 9265), (42, 9394), (44, 9400), (54, 9445), (59, 9463), (64, 9478), (70, 9490), (95, 9571), (97, 9574), (99, 9580), (114, 9631), (115, 9634), (120, 9646), (124, 9658), (129, 9688), (135, 9709), (142, 9733), (152, 9763), (154, 9778), (156, 9781),

Gene: Wayne_11 Start: 9311, Stop: 9883, Start Num: 6

Candidate Starts for Wayne_11:

(Start: 6 @9311 has 6 MA's), (39, 9473), (42, 9485), (44, 9491), (54, 9536), (97, 9665), (99, 9671), (124, 9749), (129, 9779), (142, 9824), (143, 9827), (154, 9869), (156, 9872),

Gene: Wiggin_16 Start: 9133, Stop: 9699, Start Num: 17

Candidate Starts for Wiggin_16:

(Start: 17 @9133 has 123 MA's), (43, 9271), (70, 9361), (73, 9370), (104, 9490), (110, 9517), (127, 9583),

Gene: Willez_14 Start: 9186, Stop: 9752, Start Num: 17

Candidate Starts for Willez_14:

(Start: 17 @9186 has 123 MA's), (43, 9324), (70, 9414), (73, 9423), (104, 9543), (110, 9570), (127, 9636),

Gene: WonderBoy_7 Start: 6336, Stop: 6905, Start Num: 7

Candidate Starts for WonderBoy_7:

(Start: 5 @6327 has 52 MA's), (Start: 7 @6336 has 25 MA's), (19, 6381), (42, 6510), (44, 6516), (59, 6579), (64, 6594), (70, 6606), (79, 6636), (95, 6687), (97, 6690), (99, 6696), (114, 6747), (115, 6750), (124, 6774), (129, 6804), (142, 6849), (152, 6879), (154, 6894), (156, 6897),

Gene: Xandras_16 Start: 9133, Stop: 9699, Start Num: 17

Candidate Starts for Xandras_16:

(Start: 17 @9133 has 123 MA's), (43, 9271), (70, 9361), (73, 9370), (104, 9490), (110, 9517), (127, 9583),

Gene: YassJohnny_15 Start: 9678, Stop: 10244, Start Num: 17

Candidate Starts for YassJohnny_15:

(Start: 17 @9678 has 123 MA's), (43, 9816), (70, 9906), (73, 9915), (104, 10035), (110, 10062), (127, 10128),

Gene: Youngblood_14 Start: 9311, Stop: 9877, Start Num: 17

Candidate Starts for Youngblood_14:

(Start: 17 @9311 has 123 MA's), (43, 9449), (70, 9539), (73, 9548), (104, 9668), (110, 9695), (127, 9761),

Gene: Zorro_11 Start: 9199, Stop: 9768, Start Num: 7

Candidate Starts for Zorro_11:

(Start: 5 @9190 has 52 MA's), (Start: 7 @9199 has 25 MA's), (19, 9244), (42, 9373), (44, 9379), (54, 9424), (59, 9442), (64, 9457), (70, 9469), (95, 9550), (97, 9553), (99, 9559), (114, 9610), (115, 9613), (120, 9625), (124, 9637), (129, 9667), (135, 9688), (142, 9712), (152, 9742), (154, 9757), (156, 9760),

Gene: phiSASD1_29 Start: 6506, Stop: 7102, Start Num: 9

Candidate Starts for phiSASD1_29:

(Start: 9 @6506 has 6 MA's), (35, 6617), (41, 6662), (56, 6722), (88, 6827), (89, 6833), (101, 6875), (103, 6884), (106, 6893), (140, 7025), (147, 7043), (161, 7088),

Gene: xkcd_15 Start: 9338, Stop: 9904, Start Num: 17

Candidate Starts for xkcd_15:

(Start: 17 @9338 has 123 MA's), (43, 9476), (70, 9566), (73, 9575), (104, 9695), (110, 9722), (127, 9788),