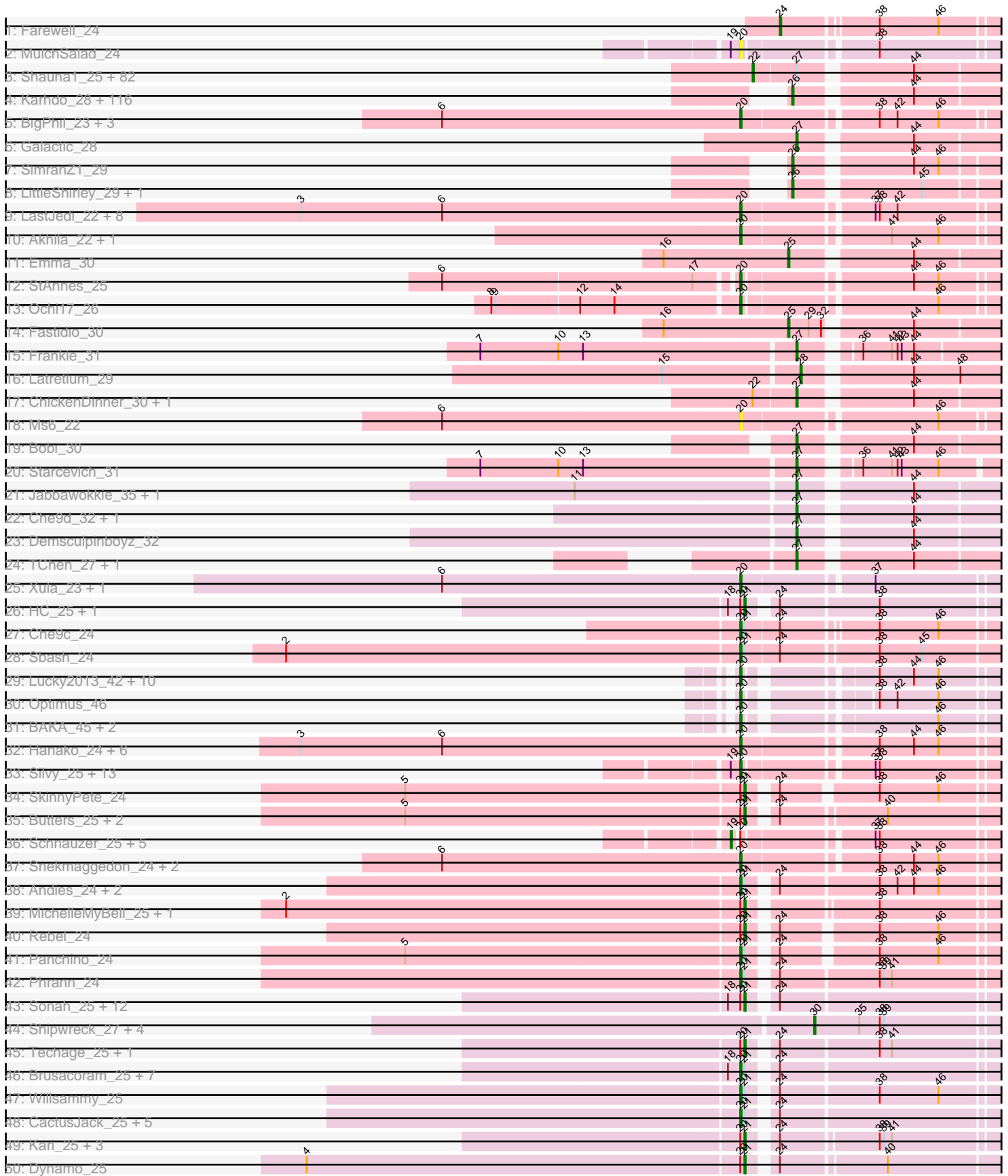
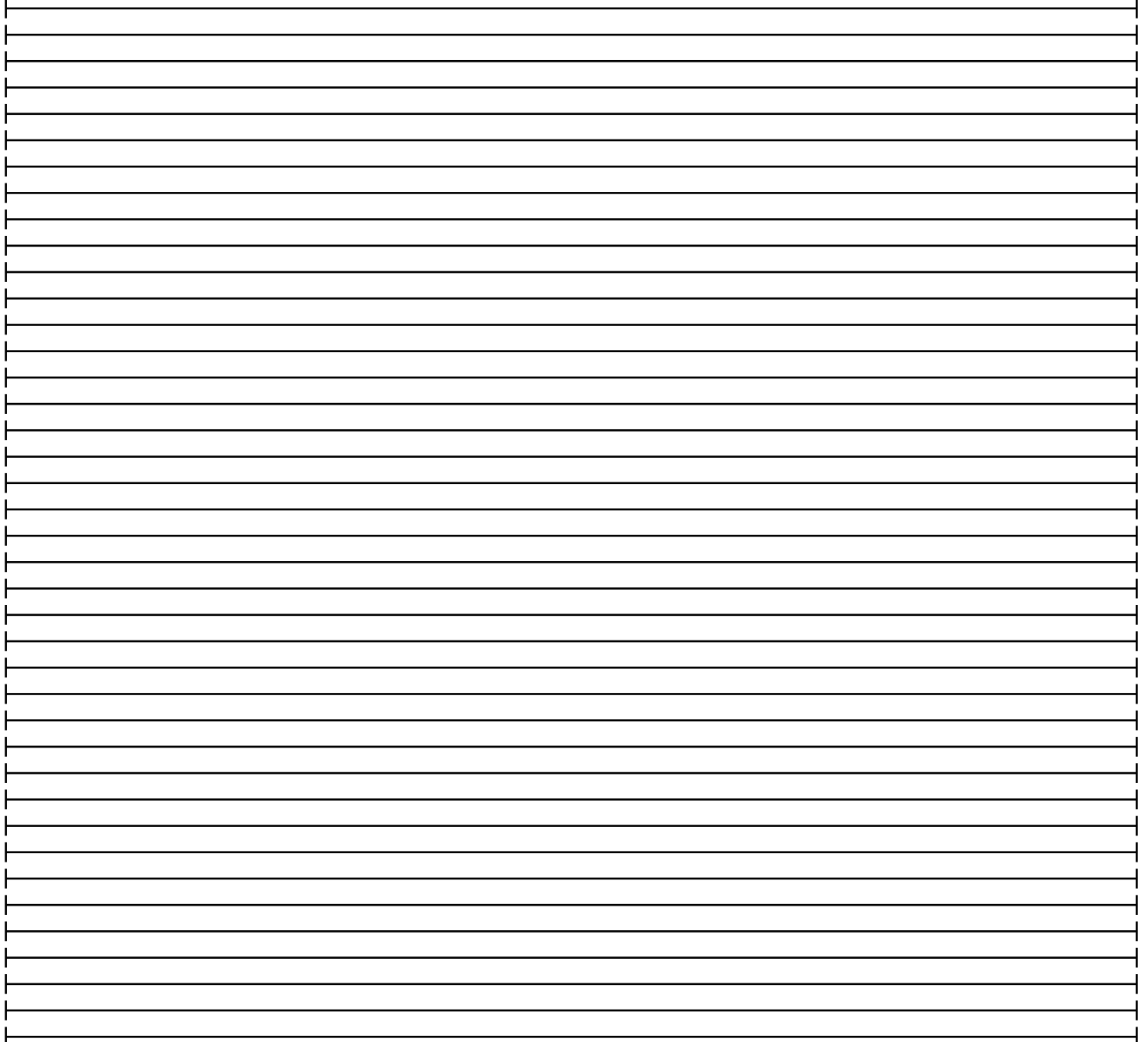
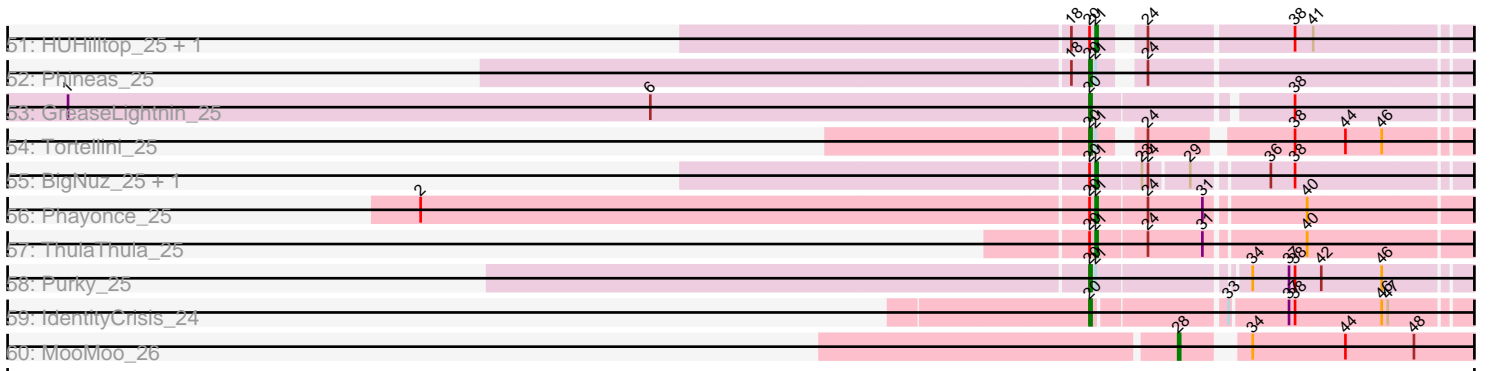


Pham 196218



Pham 196218



Note: Tracks are now grouped by subcluster and scaled. Switching in subcluster is indicated by changes in track color. Track scale is now set by default to display the region 30 bp upstream of start 1 to 30 bp downstream of the last possible start. If this default region is judged to be packed too tightly with annotated starts, the track will be further scaled to only show that region of the ORF with annotated starts. This action will be indicated by adding "Zoomed" to the title. For starts, yellow indicates the location of called starts comprised solely of Glimmer/GeneMark auto-annotations, green indicates the location of called starts with at least 1 manual gene annotation.

Pham 196218 Report

This analysis was run 12/09/24 on database version 580.

Pham number 196218 has 354 members, 15 are drafts.

Phages represented in each track:

- Track 1 : Farewell_24
- Track 2 : MulchSalad_24
- Track 3 : Shauna1_25, Enby_29, Cornucopia_29, Tweety_28, Mandlovu_28, Kingsley_26, Fancypants_28, Coco12_27, Marker_29, Taj_28, Wee_29, SG4_28, Ramsey_29, Geralt_28, Tootsieroll_29, Zerg_28, EleanorGeorge_28, DosHalletts_29, Bubbles123_29, VRedHorse_28, BuzzLyseyear_30, Fruitloop_27, Polka14_29, XFactor_28, Filuzino_28, Eish_28, Blarby_36, Firehouse51_29, IMpilo_27, MilleniumForce_29, Hlubikazi_28, OwlsT2W_29, TootsiePop_29, SassyB_28, Moonbeam_29, Spikelee_29, Ovechkin_28, Quico_29, PhesterPhotato_28, DillTech15_28, ShroomBoi_25, Bipolar_25, Batiatus_28, WillSterrel_29, DLane_28, DaddyRickover_28, Juice456_29, Phalconet_28, Deb65_28, Leozinho_29, JalFarm20_30, KristaRAM_29, Spartacus_29, DocMcStuffins_30, Hegedechwinu_29, IrishSherpFalk_29, Flathead_28, Krakatau_29, Aubs_28, Seagreen_29, Awesomesauce_29, IbOuu_30, Royals2015_28, Job42_31, Alexphander_30, Florinda_28, Doug_29, Dorothy_28, Plumbus_29, DaWorst_30, Hades_28, Phanphagia_25, Melissauren88_28, Strokeseat_28, Beakin_29, PopTart_28, DeadP_28, Mova_29, RockyHorror_29, Mozy_29, Misha28_29, Girafales_29, Gandolph_28
- Track 4 : Karhdo_28, ByChance_28, Drago_29, Sparkdehlily_28, Chevrolet_28, BobaPhett_28, Cabrinians_28, Daenerys_28, Ruby_28, James_28, Sabbb_29, FreddyB_28, BodEinwohner17_28, Kimberlium_30, Philus_28, Rita_28, Whouxphf_28, Donkeykong_28, Nimbo_28, Totinger_29, MisterCuddles_28, Priscilla_28, Lizziana_28, Byougenkin_28, PHappiness_28, BlueCrab_28, ArcusAngelus_28, Chuckly_28, CaptainTrips_29, Guppsters_29, AlpineSix_29, TDanisky_28, Phatniss_29, Rockne_28, Blexus_28, Zizzle_28, LunaBlu_29, Mattes_28, Piper2020_30, Madiba_26, Empress_29, Soul22_32, Whatsapiecost_28, Seabastian_28, Nitzel_29, QuickMath_29, Jinglebell_27, Hamulus_28, JoeyJr_28, Phasih_29, DotProduct_28, RedBird_28, Yorick_28, Harley_28, Dante_28, Jarcob_28, Pollywog_28, PMC_28, Che8_30, Saal_28, SuperGrey_28, Leperchaun_28, Veteran_28, Modragons_28, MinionDave_29, OlympiaSaint_28, Lorde_29, Mutaforma13_28, Nivrat_28, Boomer_29, ShowerHandel_28, DRBy19_28, Renaud18_28, MulchExplorer_31, UncleRicky_31, Estave1_26, Sassafras_28, ThetaBob_27, Kenuha5_25, Burwell21_28, Stap_29, Wachhund_28, Oksu_29, Mantra_28, Doomphist_28, LilMoolah_28, ShiLan_28, NormanBulbieJr_28, DirtMcgirt_29, SwagPigglett_28, Inventum_28, GigiOuiOui_28, Gorge_28, Sandalphon_29, Pacc40_28, Ogopogo_28, Poenanya_28, Mahavrat_28, RitaG_28, OldBen_28, Eradicator_28, Juniper1_28, Maravista_28, Scottish_29, SiSi_28,

Ibhubesi_28, GUmbie_28, OfUltron_28, MadMen_25, KingMidas_29, Girr_28, Llama_28, Cornie_28, Llij_28, Radiance_28, Spoonbill_28, Martik_28

- Track 5 : BigPhil_23, Sarma624_23, Cerasum_23, Velveteen_23
- Track 6 : Galactic_28
- Track 7 : SimranZ1_29
- Track 8 : LittleShirley_29, Rialto_30
- Track 9 : LastJedi_22, Clifton_22, Squirty_23, Pippy_22, Phloss_24, Brocalys_23, Crumble_22, Koella_22, Fulbright_24
- Track 10 : Akhila_22, MilanaBonita_22
- Track 11 : Emma_30
- Track 12 : StAnnes_25
- Track 13 : Ochi17_26
- Track 14 : Fastidio_30
- Track 15 : Frankie_31
- Track 16 : Latretium_29
- Track 17 : ChickenDinner_30, Minnie_29
- Track 18 : Ms6_22
- Track 19 : Bobi_30
- Track 20 : Starcevich_31
- Track 21 : Jabbawokkie_35, Zapner_34
- Track 22 : Che9d_32, Avani_32
- Track 23 : Demsculpinboyz_32
- Track 24 : TChen_27, LunaStella_29
- Track 25 : Xula_23, QueenHazel_24
- Track 26 : HC_25, Babsiella_25
- Track 27 : Che9c_24
- Track 28 : Sbash_24
- Track 29 : Lucky2013_42, Courthouse_42, Superphikiman_42, DmpstrDiver_43, Porcelain_41, Ariel_42, LittleE_48, Squint_41, Hannaconda_39, MiaZeal_42, KashFlow_36
- Track 30 : Optimus_46
- Track 31 : BAKA_45, Gonephishing_43, Omega_47
- Track 32 : Hanako_24, Redi_24, Nenae_24, PhancyPhin_24, BabeRuth_24, ShrimpFriedEgg_24, Purgamenstris_24
- Track 33 : Silvy_25, Magsby_25, Xerxes_25, Duplicity_25, Journey_25, Bosection6_25, Charlie_25, Melville_25, Gex_25, Aggie_25, Tapioca_25, Parmesanjohn_25, LilSpotty_28, Smurph_25
- Track 34 : SkinnyPete_24
- Track 35 : Butters_25, Kevin1_25, Rubeelu_25
- Track 36 : Schnauzer_25, Philonius_25, Carcharodon_25, Chewbacca_25, Silvafighter_25, Pipsqueaks_25
- Track 37 : Snekmaggedon_24, SpongeBob_24, Jamie19_24
- Track 38 : Andies_24, Shweta_24, Scitech_24
- Track 39 : MichelleMyBell_25, Raymond7_24
- Track 40 : Rebel_24
- Track 41 : Panchino_24
- Track 42 : Phrann_24
- Track 43 : Sonah_25, Ksquared_25, Phegasus_25, Fishburne_25, Jebeks_25, Juniormint_25, Venti_25, Polkaroo_25, Vidya_25, FirstPlacePfu_25, StevieRay_25, Bunnies_25, Donovan_25
- Track 44 : Shipwreck_27, Pygmy_27, Brujita_28, Bogie_27, Island3_28
- Track 45 : Techage_25, Xeno_24

- Track 46 : Brusacoram_25, Zilizebeth_25, Mangethe_25, Necropolis_25, Majeke_25, Thespis_25, Malithi_25, Arib1_25
- Track 47 : Willsammy_25
- Track 48 : CactusJack_25, StressBall_25, Glaske_25, Megiddo_25, KilKor_25, Phalm_25
- Track 49 : Kari_25, Atcoo_25, Camster_25, Xavia_25
- Track 50 : Dynamo_25
- Track 51 : HUHilltop_25, Langerak_25
- Track 52 : Phineas_25
- Track 53 : GreaseLightnin_25
- Track 54 : Tortellini_25
- Track 55 : BigNuz_25, Nazo_25
- Track 56 : Phayonce_25
- Track 57 : ThulaThula_25
- Track 58 : Purky_25
- Track 59 : IdentityCrisis_24
- Track 60 : MooMoo_26

Summary of Final Annotations (See graph section above for start numbers):

The start number called the most often in the published annotations is 26, it was called in 118 of the 339 non-draft genes in the pham.

Genes that call this "Most Annotated" start:

- AlpineSix_29, ArcusAngelus_28, Blexus_28, BlueCrab_28, BobaPhett_28, BodEinwohner17_28, Boomer_29, Burwell21_28, ByChance_28, Byougenkin_28, Cabrinians_28, CaptainTrips_29, Che8_30, Chevrolet_28, Chuckly_28, Cornie_28, DRBy19_28, Daenerys_28, Dante_28, DirtMcgirt_29, Donkeykong_28, Doomphist_28, DotProduct_28, Drago_29, Empress_29, Eradicator_28, Estave1_26, FreddyB_28, GUmbie_28, GigiOuiOui_28, Girr_28, Gorge_28, Guppsters_29, Hamulus_28, Harley_28, Ibhubesi_28, Inventum_28, James_28, Jarcob_28, Jinglebell_27, JoeyJr_28, Juniper1_28, Karhdo_28, Kenuha5_25, Kimberlium_30, KingMidas_29, Leperchaun_28, LilMoolah_28, LittleShirley_29, Lizziana_28, Llama_28, Llij_28, Lorde_29, LunaBlu_29, MadMen_25, Madiba_26, Mahavrat_28, Mantra_28, Maravista_28, Martik_28, Mattes_28, MinionDave_29, MisterCuddles_28, Modragons_28, MulchExplorer_31, Mutaforma13_28, Nimbo_28, Nitzel_29, Nivrat_28, NormanBulbieJr_28, OfUltron_28, Ogoopogo_28, Oksu_29, OldBen_28, OlympiaSaint_28, PHappiness_28, PMC_28, Pacc40_28, Phasih_29, Phatniss_29, Philus_28, Piper2020_30, Poenanya_28, Pollywog_28, Priscilla_28, QuickMath_29, Radiance_28, RedBird_28, Renaud18_28, Rialto_30, RitaG_28, Rita_28, Rockne_28, Ruby_28, Saal_28, Sabbb_29, Sandalphon_29, Sassafras_28, Scottish_29, Sebastian_28, ShiLan_28, ShowerHandel_28, SiSi_28, SimranZ1_29, Soul22_32, Sparkdehlily_28, Spoonbill_28, Stap_29, SuperGrey_28, SwagPiggett_28, TDanisky_28, ThetaBob_27, Totinger_29, UncleRicky_31, Veteran_28, Wachhund_28, Whatsapiecost_28, Whouxphf_28, Yorick_28, Zizzle_28,

Genes that have the "Most Annotated" start but do not call it:

-

Genes that do not have the "Most Annotated" start:

• Aggie_25, Akhila_22, Alexphander_30, Andies_24, Arib1_25, Ariel_42, Atcoo_25, Aubs_28, Avani_32, Awesomesauce_29, BAKA_45, BabeRuth_24, Babsiella_25, Batiatus_28, Beakin_29, BigNuz_25, BigPhil_23, Bipolar_25, Blarby_36, Bobi_30, Bogie_27, Bosection6_25, Brocalys_23, Brujita_28, Brusacoram_25, Bubbles123_29, Bunnies_25, Butters_25, BuzzLyseyear_30, CactusJack_25, Camster_25, Carcharodon_25, Cerasum_23, Charlie_25, Che9c_24, Che9d_32, Chewbacca_25, ChickenDinner_30, Clifton_22, Coco12_27, Cornucopia_29, Courthouse_42, Crumble_22, DLane_28, DaWorst_30, DaddyRickover_28, DeadP_28, Deb65_28, Demsculpinboyz_32, DillTech15_28, DmpstrDiver_43, DocMcStuffins_30, Donovan_25, Dorothy_28, DosHalletts_29, Doug_29, Duplicity_25, Dynamo_25, Eish_28, EleanorGeorge_28, Emma_30, Enby_29, Fancypants_28, Farewell_24, Fastidio_30, Filuzino_28, Firehouse51_29, FirstPlacePfu_25, Fishburne_25, Flathead_28, Florinda_28, Frankie_31, Fruitloop_27, Fulbright_24, Galactic_28, Gandolph_28, Geralt_28, Gex_25, Girafales_29, Glaske_25, Gonephishing_43, GreaseLightnin_25, HC_25, HUHilltop_25, Hades_28, Hanako_24, Hannaconda_39, Hegedechwinu_29, Hlubikazi_28, IMpilo_27, IbOuu_30, IdentityCrisis_24, IrishSherpFalk_29, Island3_28, Jabbawokkie_35, JalFarm20_30, Jamie19_24, Jebeks_25, Job42_31, Journey_25, Juice456_29, Juniormint_25, Kari_25, KashFlow_36, Kevin1_25, KilKor_25, Kingsley_26, Koella_22, Krakatau_29, KristaRAM_29, Ksqquared_25, Langerak_25, LastJedi_22, Latretium_29, Leozinho_29, LilSpotty_28, LittleE_48, Lucky2013_42, LunaStella_29, Magsby_25, Majeke_25, Malithi_25, Mandlovu_28, Mangethe_25, Marker_29, Megiddo_25, Melissauren88_28, Melville_25, MiaZeal_42, MichelleMyBell_25, MilanaBonita_22, MilleniumForce_29, Minnie_29, Misha28_29, MooMoo_26, Moonbeam_29, Mova_29, Mozy_29, Ms6_22, MulchSalad_24, Nazo_25, Necropolis_25, Nenae_24, Ochi17_26, Omega_47, Optimus_46, Ovechkin_28, OwlsT2W_29, Panchino_24, Parmesanjohn_25, Phalconet_28, Phalm_25, PhancyPhin_24, Phanphagia_25, Phayonce_25, Phegasus_25, PhesterPhotato_28, Philonius_25, Phineas_25, Phloss_24, Phrann_24, Pippy_22, Pipsqueaks_25, Plumbus_29, Polka14_29, Polkaroo_25, PopTart_28, Porcelain_41, Purgamenstris_24, Purky_25, Pygmy_27, QueenHazel_24, Quico_29, Ramsey_29, Raymond7_24, Rebel_24, Redi_24, RockyHorror_29, Royals2015_28, Rubeelu_25, SG4_28, Sarma624_23, SassyB_28, Sbash_24, Schnauzer_25, Scitech_24, Seagreen_29, Shauna1_25, Shipwreck_27, ShrimpFriedEgg_24, ShroomBoi_25, Shweta_24, Silvafighter_25, Silvy_25, SkinnyPete_24, Smurph_25, Snekmaggedon_24, Sonah_25, Spartacus_29, Spikelee_29, SpongeBob_24, Squint_41, Squirty_23, StAnnes_25, Starceвич_31, StevieRay_25, StressBall_25, Strokeseat_28, Superphikiman_42, TChen_27, Taj_28, Tapioca_25, Techage_25, Thespis_25, ThulaThula_25, TootsiePop_29, Tootsieroll_29, Tortellini_25, Tweety_28, VRedHorse_28, Velveteen_23, Venti_25, Vidya_25, Wee_29, WillSterrel_29, Willsammy_25, XFactor_28, Xavia_25, Xen0_24, Xerxes_25, Xula_23, Zapner_34, Zerg_28, Zilizebeth_25,

Summary by start number:

Start 19:

- Found in 21 of 354 (5.9%) of genes in pham
- Manual Annotations of this start: 6 of 339
- Called 28.6% of time when present
- Phage (with cluster) where this start called: Carcharodon_25 (N), Chewbacca_25 (N), Philonius_25 (N), Pipsqueaks_25 (N), Schnauzer_25 (N), Silvafighter_25 (N),

Start 20:

- Found in 128 of 354 (36.2%) of genes in pham

- Manual Annotations of this start: 82 of 339
- Called 68.0% of time when present
- Phage (with cluster) where this start called: Aggie_25 (N), Akhila_22 (F1), Andies_24 (N), Arib1_25 (P1), Ariel_42 (J), BAKA_45 (J), BabeRuth_24 (N), BigPhil_23 (F1), Bosection6_25 (N), Brocalys_23 (F1), Brusacoram_25 (P1), CactusJack_25 (P1), Cerasum_23 (F1), Charlie_25 (N), Che9c_24 (I2), Clifton_22 (F1), Courthouse_42 (J), Crumble_22 (F1), DmpstrDiver_43 (J), Duplicity_25 (N), Fulbright_24 (N), Gex_25 (N), Glaske_25 (P1), Gonephishing_43 (J), GreaseLightnin_25 (P1), Hanako_24 (N), Hannaconda_39 (J), IdentityCrisis_24 (singleton), Jamie19_24 (N), Journey_25 (N), KashFlow_36 (J), KilKor_25 (P1), Koella_22 (F1), LastJedi_22 (F1), LilSpotty_28 (singleton), LittleE_48 (J), Lucky2013_42 (J), Magsby_25 (N), Majeke_25 (P1), Malithi_25 (P1), Mangethe_25 (P1), Megiddo_25 (P1), Melville_25 (N), MiaZeal_42 (J), MilanaBonita_22 (F1), Ms6_22 (F1), MulchSalad_24 (F), Necropolis_25 (P1), Nenae_24 (N), Ochi17_26 (F1), Omega_47 (J), Optimus_46 (J), Panchino_24 (N), Parmesanjohn_25 (N), Phalm_25 (P1), PhancyPhin_24 (N), Phineas_25 (P1), Phloss_24 (N), Phrann_24 (N), Pippy_22 (F1), Porcelain_41 (J), Purgamenstris_24 (N), Purky_25 (P6), QueenHazel_24 (I1), Redi_24 (N), Sarma624_23 (F1), Sbash_24 (I2), Scitech_24 (N), ShrimpFriedEgg_24 (N), Shweta_24 (N), Silvy_25 (N), Smurph_25 (N), Snekmaggedon_24 (N), SpongeBob_24 (N), Squint_41 (J), Squirty_23 (F3), StAnnes_25 (F1), StressBall_25 (P1), Superphikiman_42 (J), Tapioca_25 (N), Thespis_25 (P1), Tortellini_25 (P2), Velveteen_23 (F1), Willsammy_25 (P1), Xerxes_25 (N), Xula_23 (I1), Zilizebeth_25 (P1),

Start 21:

- Found in 60 of 354 (16.9%) of genes in pham
- Manual Annotations of this start: 32 of 339
- Called 58.3% of time when present
- Phage (with cluster) where this start called: Atcoo_25 (P1), Babsiella_25 (I1), BigNuz_25 (P4), Bunnies_25 (P1), Butters_25 (N), Camster_25 (P1), Donovan_25 (P1), Dynamo_25 (P1), FirstPlacePfu_25 (P1), Fishburne_25 (P1), HC_25 (I1), HUHilltop_25 (P1), Jebeks_25 (P1), Juniormint_25 (P1), Kari_25 (P1), Kevin1_25 (N), Ksquared_25 (P1), Langerak_25 (P1), MichelleMyBell_25 (N), Nazo_25 (P4), Phayonce_25 (P5), Phegasus_25 (P1), Polkaroo_25 (P1), Raymond7_24 (N), Rebel_24 (N), Rubeelu_25 (N), SkinnyPete_24 (N), Sonah_25 (P1), StevieRay_25 (P1), Techage_25 (P1), ThulaThula_25 (P5), Venti_25 (P1), Vidya_25 (P1), Xavia_25 (P3), Xeno_24 (N),

Start 22:

- Found in 85 of 354 (24.0%) of genes in pham
- Manual Annotations of this start: 79 of 339
- Called 97.6% of time when present
- Phage (with cluster) where this start called: Alexphander_30 (F1), Aubs_28 (F1), Awesomesauce_29 (F1), Batiatus_28 (F1), Beakin_29 (F1), Bipolar_25 (F1), Blarby_36 (F), Bubbles123_29 (F1), BuzzLyseyear_30 (F1), Coco12_27 (F1), Cornucopia_29 (F1), DLane_28 (F1), DaWorst_30 (F1), DaddyRickover_28 (F1), DeadP_28 (F1), Deb65_28 (F1), DillTech15_28 (F1), DocMcStuffins_30 (F1), Dorothy_28 (F1), DosHalletts_29 (F1), Doug_29 (F1), Eish_28 (F1), EleanorGeorge_28 (F1), Enby_29 (F1), Fancypants_28 (F1), Filuzino_28 (F1), Firehouse51_29 (F1), Flathead_28 (F1), Florinda_28 (F1), Fruitloop_27 (F1), Gandolph_28 (F1), Geralt_28 (F1), Girafales_29 (F1), Hades_28 (F1), Hegedechwinu_29 (F1), Hlubikazi_28 (F1), IMpilo_27 (F1), IbOuu_30 (F1), IrishSherpFalk_29 (F1), JalFarm20_30 (F1), Job42_31 (F1), Juice456_29 (F1),

Kingsley_26 (F1), Krakatau_29 (F1), KristaRAM_29 (F1), Leozinho_29 (F1), Mandlovu_28 (F1), Marker_29 (F1), Melissau88_28 (F1), MilleniumForce_29 (F1), Misha28_29 (F1), Moonbeam_29 (F1), Mova_29 (F1), Mozy_29 (F1), Ovechkin_28 (F1), OwlsT2W_29 (F1), Phalconet_28 (F1), Phanphagia_25 (F1), PhesterPhotato_28 (F1), Plumbus_29 (F1), Polka14_29 (F1), PopTart_28 (F1), Quico_29 (F1), Ramsey_29 (F1), RockyHorror_29 (F1), Royals2015_28 (F1), SG4_28 (F1), SassyB_28 (F1), Seagreen_29 (F1), Shauna1_25 (F1), ShroomBoi_25 (F1), Spartacus_29 (F1), Spikelee_29 (F1), Strokeseat_28 (F1), Taj_28 (F1), TootsiePop_29 (F1), Tootsieroll_29 (F1), Tweety_28 (F1), VRedHorse_28 (F1), Wee_29 (F1), WillSterrel_29 (F1), XFactor_28 (F1), Zerg_28 (F1),

Start 24:

- Found in 58 of 354 (16.4%) of genes in pham
- Manual Annotations of this start: 1 of 339
- Called 1.7% of time when present
- Phage (with cluster) where this start called: Farewell_24 (AF),

Start 25:

- Found in 2 of 354 (0.6%) of genes in pham
- Manual Annotations of this start: 2 of 339
- Called 100.0% of time when present
- Phage (with cluster) where this start called: Emma_30 (F1), Fastidio_30 (F1),

Start 26:

- Found in 120 of 354 (33.9%) of genes in pham
- Manual Annotations of this start: 118 of 339
- Called 100.0% of time when present
- Phage (with cluster) where this start called: AlpineSix_29 (F1), ArcusAngelus_28 (F1), Blexus_28 (F1), BlueCrab_28 (F1), BobaPhett_28 (F1), BodEinwohner17_28 (F1), Boomer_29 (F1), Burwell21_28 (F1), ByChance_28 (F1), Byougenkin_28 (F1), Cabrinians_28 (F1), CaptainTrips_29 (F1), Che8_30 (F1), Chevrolet_28 (F1), Chuckly_28 (F1), Cornie_28 (F5), DRBy19_28 (F1), Daenerys_28 (F1), Dante_28 (F1), DirtMcgirt_29 (F1), Donkeykong_28 (F1), Doomphist_28 (F1), DotProduct_28 (F1), Drago_29 (F1), Empress_29 (F1), Eradicator_28 (F1), Estave1_26 (F1), FreddyB_28 (F1), GUmbie_28 (F1), GigiOuiOui_28 (F1), Girr_28 (F1), Gorge_28 (F1), Guppsters_29 (F1), Hamulus_28 (F1), Harley_28 (F1), Ibhubesi_28 (F1), Inventum_28 (F1), James_28 (F1), Jacob_28 (F1), Jinglebell_27 (F1), JoeyJr_28 (F1), Juniper1_28 (F1), Karhdo_28 (F1), Kenuha5_25 (F1), Kimberlium_30 (F1), KingMidas_29 (F1), Leperchaun_28 (F1), LilMoolah_28 (F1), LittleShirley_29 (F1), Lizziana_28 (F1), Llama_28 (F1), Llij_28 (F1), Lorde_29 (F1), LunaBlu_29 (F1), MadMen_25 (F1), Madiba_26 (F1), Mahavrat_28 (F1), Mantra_28 (F1), Maravista_28 (F1), Martik_28 (F1), Mattes_28 (F1), MinionDave_29 (F1), MisterCuddles_28 (F1), Modragons_28 (F1), MulchExplorer_31 (F1), Mutaforma13_28 (F1), Nimbo_28 (F1), Nitzel_29 (F1), Nivrat_28 (F1), NormanBulbieJr_28 (F1), OfUltron_28 (F1), OgoPogo_28 (F1), Oksu_29 (F1), OldBen_28 (F1), OlympiaSaint_28 (F1), PHappiness_28 (F1), PMC_28 (F1), Pacc40_28 (F1), Phasih_29 (F1), Phatniss_29 (F1), Philus_28 (F1), Piper2020_30 (F1), Poenanya_28 (F1), Pollywog_28 (F1), Priscilla_28 (F1), QuickMath_29 (F1), Radiance_28 (F1), RedBird_28 (F1), Renaud18_28 (F4), Rialto_30 (F1), RitaG_28 (F1), Rita_28 (F1), Rockne_28 (F1), Ruby_28 (F1), Saal_28 (F1), Sabbb_29 (F1), Sandalphon_29 (F1), Sassafras_28 (F1), Scottish_29 (F1), Seabastian_28 (F1), ShiLan_28 (F1), ShowerHandel_28 (F1), SiSi_28 (F1), SimranZ1_29 (F1), Soul22_32 (F2), Sparkdehlily_28 (F1), Spoonbill_28 (F1), Stap_29 (F1), SuperGrey_28 (F1), SwagPiggett_28 (F1), TDanisky_28 (F1),

ThetaBob_27 (F4), Totinger_29 (F1), UncleRicky_31 (F1), Veteran_28 (F1), Wachhund_28 (F1), Whatsapiecost_28 (F1), Whouxphf_28 (F1), Yorick_28 (F1), Zizzle_28 (F1),

Start 27:

- Found in 96 of 354 (27.1%) of genes in pham
- Manual Annotations of this start: 12 of 339
- Called 13.5% of time when present
- Phage (with cluster) where this start called: Avani_32 (F2), Bobi_30 (F1), Che9d_32 (F2), ChickenDinner_30 (F1), Demsculpinboyz_32 (F2), Frankie_31 (F1), Galactic_28 (F1), Jabbawokkie_35 (F2), LunaStella_29 (F4), Minnie_29 (F1), Starcevich_31 (F1), TChen_27 (F4), Zapner_34 (F2),

Start 28:

- Found in 2 of 354 (0.6%) of genes in pham
- Manual Annotations of this start: 2 of 339
- Called 100.0% of time when present
- Phage (with cluster) where this start called: Latretium_29 (F1), MooMoo_26 (singleton),

Start 30:

- Found in 5 of 354 (1.4%) of genes in pham
- Manual Annotations of this start: 5 of 339
- Called 100.0% of time when present
- Phage (with cluster) where this start called: Bogie_27 (P1), Brujita_28 (I1), Island3_28 (I1), Pygmy_27 (P1), Shipwreck_27 (P1),

Summary by clusters:

There are 18 clusters represented in this pham: P2, F1, F2, P1, P6, F5, P4, P5, I1, P3, J, singleton, N, F3, F, AF, F4, I2,

Info for manual annotations of cluster AF:

- Start number 24 was manually annotated 1 time for cluster AF.

Info for manual annotations of cluster F1:

- Start number 20 was manually annotated 14 times for cluster F1.
- Start number 22 was manually annotated 79 times for cluster F1.
- Start number 25 was manually annotated 2 times for cluster F1.
- Start number 26 was manually annotated 114 times for cluster F1.
- Start number 27 was manually annotated 5 times for cluster F1.
- Start number 28 was manually annotated 1 time for cluster F1.

Info for manual annotations of cluster F2:

- Start number 26 was manually annotated 1 time for cluster F2.
- Start number 27 was manually annotated 5 times for cluster F2.

Info for manual annotations of cluster F3:

- Start number 20 was manually annotated 1 time for cluster F3.

Info for manual annotations of cluster F4:

- Start number 26 was manually annotated 2 times for cluster F4.

- Start number 27 was manually annotated 2 times for cluster F4.

Info for manual annotations of cluster F5:

- Start number 26 was manually annotated 1 time for cluster F5.

Info for manual annotations of cluster I1:

- Start number 20 was manually annotated 2 times for cluster I1.
- Start number 21 was manually annotated 2 times for cluster I1.
- Start number 30 was manually annotated 2 times for cluster I1.

Info for manual annotations of cluster I2:

- Start number 20 was manually annotated 2 times for cluster I2.

Info for manual annotations of cluster J:

- Start number 20 was manually annotated 14 times for cluster J.

Info for manual annotations of cluster N:

- Start number 19 was manually annotated 6 times for cluster N.
- Start number 20 was manually annotated 28 times for cluster N.
- Start number 21 was manually annotated 8 times for cluster N.

Info for manual annotations of cluster P1:

- Start number 20 was manually annotated 17 times for cluster P1.
- Start number 21 was manually annotated 17 times for cluster P1.
- Start number 30 was manually annotated 3 times for cluster P1.

Info for manual annotations of cluster P2:

- Start number 20 was manually annotated 1 time for cluster P2.

Info for manual annotations of cluster P3:

- Start number 21 was manually annotated 1 time for cluster P3.

Info for manual annotations of cluster P4:

- Start number 21 was manually annotated 2 times for cluster P4.

Info for manual annotations of cluster P5:

- Start number 21 was manually annotated 2 times for cluster P5.

Info for manual annotations of cluster P6:

- Start number 20 was manually annotated 1 time for cluster P6.

Gene Information:

Gene: Aggie_25 Start: 22170, Stop: 22349, Start Num: 20

Candidate Starts for Aggie_25:

(Start: 19 @22167 has 6 MA's), (Start: 20 @22170 has 82 MA's), (37, 22254), (38, 22257),

Gene: Akhila_22 Start: 21918, Stop: 22094, Start Num: 20

Candidate Starts for Akhila_22:

(Start: 20 @21918 has 82 MA's), (41, 22017), (46, 22050),

Gene: Alexphander_30 Start: 26399, Stop: 26551, Start Num: 22
Candidate Starts for Alexphander_30:
(Start: 22 @26399 has 79 MA's), (Start: 27 @26414 has 12 MA's), (44, 26486),

Gene: AlpineSix_29 Start: 26099, Stop: 26239, Start Num: 26
Candidate Starts for AlpineSix_29:
(Start: 26 @26099 has 118 MA's), (44, 26174),

Gene: Andies_24 Start: 21768, Stop: 21941, Start Num: 20
Candidate Starts for Andies_24:
(Start: 20 @21768 has 82 MA's), (Start: 21 @21771 has 32 MA's), (Start: 24 @21786 has 1 MA's),
(38, 21855), (42, 21867), (44, 21879), (46, 21897),

Gene: ArcusAngelus_28 Start: 25871, Stop: 26011, Start Num: 26
Candidate Starts for ArcusAngelus_28:
(Start: 26 @25871 has 118 MA's), (44, 25946),

Gene: Arib1_25 Start: 22882, Stop: 23055, Start Num: 20
Candidate Starts for Arib1_25:
(18, 22873), (Start: 20 @22882 has 82 MA's), (Start: 21 @22885 has 32 MA's), (Start: 24 @22900 has
1 MA's),

Gene: Ariel_42 Start: 34845, Stop: 35006, Start Num: 20
Candidate Starts for Ariel_42:
(Start: 20 @34845 has 82 MA's), (38, 34920), (44, 34944), (46, 34962),

Gene: Atcoo_25 Start: 23373, Stop: 23543, Start Num: 21
Candidate Starts for Atcoo_25:
(Start: 20 @23370 has 82 MA's), (Start: 21 @23373 has 32 MA's), (Start: 24 @23388 has 1 MA's),
(38, 23457), (39, 23460), (41, 23466),

Gene: Aubs_28 Start: 26001, Stop: 26168, Start Num: 22
Candidate Starts for Aubs_28:
(Start: 22 @26001 has 79 MA's), (Start: 27 @26031 has 12 MA's), (44, 26103),

Gene: Avani_32 Start: 24801, Stop: 24938, Start Num: 27
Candidate Starts for Avani_32:
(Start: 27 @24801 has 12 MA's), (44, 24873),

Gene: Awesomesauce_29 Start: 25741, Stop: 25893, Start Num: 22
Candidate Starts for Awesomesauce_29:
(Start: 22 @25741 has 79 MA's), (Start: 27 @25756 has 12 MA's), (44, 25828),

Gene: BAKA_45 Start: 38282, Stop: 38443, Start Num: 20
Candidate Starts for BAKA_45:
(Start: 20 @38282 has 82 MA's), (46, 38399),

Gene: BabeRuth_24 Start: 21647, Stop: 21823, Start Num: 20
Candidate Starts for BabeRuth_24:
(3, 21329), (6, 21431), (Start: 20 @21647 has 82 MA's), (38, 21737), (44, 21761), (46, 21779),

Gene: Babsiella_25 Start: 22893, Stop: 23063, Start Num: 21
Candidate Starts for Babsiella_25:

(18, 22881), (Start: 20 @22890 has 82 MA's), (Start: 21 @22893 has 32 MA's), (Start: 24 @22908 has 1 MA's), (38, 22977),

Gene: Batiatus_28 Start: 25899, Stop: 26051, Start Num: 22

Candidate Starts for Batiatus_28:

(Start: 22 @25899 has 79 MA's), (Start: 27 @25914 has 12 MA's), (44, 25986),

Gene: Beakin_29 Start: 25768, Stop: 25920, Start Num: 22

Candidate Starts for Beakin_29:

(Start: 22 @25768 has 79 MA's), (Start: 27 @25783 has 12 MA's), (44, 25855),

Gene: BigNuz_25 Start: 23510, Stop: 23683, Start Num: 21

Candidate Starts for BigNuz_25:

(Start: 20 @23507 has 82 MA's), (Start: 21 @23510 has 32 MA's), (23, 23531), (Start: 24 @23534 has 1 MA's), (29, 23552), (36, 23585), (38, 23597),

Gene: BigPhil_23 Start: 21863, Stop: 22039, Start Num: 20

Candidate Starts for BigPhil_23:

(6, 21647), (Start: 20 @21863 has 82 MA's), (38, 21953), (42, 21965), (46, 21995),

Gene: Bipolar_25 Start: 24931, Stop: 25083, Start Num: 22

Candidate Starts for Bipolar_25:

(Start: 22 @24931 has 79 MA's), (Start: 27 @24946 has 12 MA's), (44, 25018),

Gene: Blarby_36 Start: 26306, Stop: 26470, Start Num: 22

Candidate Starts for Blarby_36:

(Start: 22 @26306 has 79 MA's), (Start: 27 @26333 has 12 MA's), (44, 26405),

Gene: Blexus_28 Start: 26193, Stop: 26327, Start Num: 26

Candidate Starts for Blexus_28:

(Start: 26 @26193 has 118 MA's), (44, 26262),

Gene: BlueCrab_28 Start: 26057, Stop: 26197, Start Num: 26

Candidate Starts for BlueCrab_28:

(Start: 26 @26057 has 118 MA's), (44, 26132),

Gene: BobaPhett_28 Start: 26045, Stop: 26179, Start Num: 26

Candidate Starts for BobaPhett_28:

(Start: 26 @26045 has 118 MA's), (44, 26114),

Gene: Bobi_30 Start: 26629, Stop: 26766, Start Num: 27

Candidate Starts for Bobi_30:

(Start: 27 @26629 has 12 MA's), (44, 26701),

Gene: BodEinwohner17_28 Start: 26197, Stop: 26337, Start Num: 26

Candidate Starts for BodEinwohner17_28:

(Start: 26 @26197 has 118 MA's), (44, 26272),

Gene: Bogie_27 Start: 24738, Stop: 24872, Start Num: 30

Candidate Starts for Bogie_27:

(Start: 30 @24738 has 5 MA's), (35, 24771), (38, 24786), (39, 24789),

Gene: Boomer_29 Start: 25673, Stop: 25813, Start Num: 26

Candidate Starts for Boomer_29:
(Start: 26 @25673 has 118 MA's), (44, 25748),

Gene: Bosection6_25 Start: 22169, Stop: 22348, Start Num: 20
Candidate Starts for Bosection6_25:
(Start: 19 @22166 has 6 MA's), (Start: 20 @22169 has 82 MA's), (37, 22253), (38, 22256),

Gene: Brocalys_23 Start: 21674, Stop: 21850, Start Num: 20
Candidate Starts for Brocalys_23:
(3, 21356), (6, 21458), (Start: 20 @21674 has 82 MA's), (37, 21761), (38, 21764), (42, 21776),

Gene: Brujita_28 Start: 25093, Stop: 25227, Start Num: 30
Candidate Starts for Brujita_28:
(Start: 30 @25093 has 5 MA's), (35, 25126), (38, 25141), (39, 25144),

Gene: Brusacoram_25 Start: 22876, Stop: 23049, Start Num: 20
Candidate Starts for Brusacoram_25:
(18, 22867), (Start: 20 @22876 has 82 MA's), (Start: 21 @22879 has 32 MA's), (Start: 24 @22894 has 1 MA's),

Gene: Bubbles123_29 Start: 26579, Stop: 26746, Start Num: 22
Candidate Starts for Bubbles123_29:
(Start: 22 @26579 has 79 MA's), (Start: 27 @26609 has 12 MA's), (44, 26681),

Gene: Bunnies_25 Start: 22901, Stop: 23071, Start Num: 21
Candidate Starts for Bunnies_25:
(18, 22889), (Start: 20 @22898 has 82 MA's), (Start: 21 @22901 has 32 MA's), (Start: 24 @22916 has 1 MA's),

Gene: Burwell21_28 Start: 26064, Stop: 26204, Start Num: 26
Candidate Starts for Burwell21_28:
(Start: 26 @26064 has 118 MA's), (44, 26139),

Gene: Butters_25 Start: 21584, Stop: 21754, Start Num: 21
Candidate Starts for Butters_25:
(5, 21341), (Start: 20 @21581 has 82 MA's), (Start: 21 @21584 has 32 MA's), (Start: 24 @21599 has 1 MA's), (40, 21671),

Gene: BuzzLyseyear_30 Start: 26410, Stop: 26577, Start Num: 22
Candidate Starts for BuzzLyseyear_30:
(Start: 22 @26410 has 79 MA's), (Start: 27 @26440 has 12 MA's), (44, 26512),

Gene: ByChance_28 Start: 26041, Stop: 26181, Start Num: 26
Candidate Starts for ByChance_28:
(Start: 26 @26041 has 118 MA's), (44, 26116),

Gene: Byougenkin_28 Start: 25893, Stop: 26033, Start Num: 26
Candidate Starts for Byougenkin_28:
(Start: 26 @25893 has 118 MA's), (44, 25968),

Gene: Cabrinians_28 Start: 26073, Stop: 26207, Start Num: 26
Candidate Starts for Cabrinians_28:
(Start: 26 @26073 has 118 MA's), (44, 26142),

Gene: CactusJack_25 Start: 23141, Stop: 23314, Start Num: 20
Candidate Starts for CactusJack_25:
(Start: 20 @23141 has 82 MA's), (Start: 21 @23144 has 32 MA's), (Start: 24 @23159 has 1 MA's),

Gene: Camster_25 Start: 22914, Stop: 23081, Start Num: 21
Candidate Starts for Camster_25:
(Start: 20 @22911 has 82 MA's), (Start: 21 @22914 has 32 MA's), (Start: 24 @22929 has 1 MA's),
(38, 22995), (39, 22998), (41, 23004),

Gene: CaptainTrips_29 Start: 26266, Stop: 26406, Start Num: 26
Candidate Starts for CaptainTrips_29:
(Start: 26 @26266 has 118 MA's), (44, 26341),

Gene: Carcharodon_25 Start: 22166, Stop: 22348, Start Num: 19
Candidate Starts for Carcharodon_25:
(Start: 19 @22166 has 6 MA's), (Start: 20 @22169 has 82 MA's), (37, 22253), (38, 22256),

Gene: Cerasum_23 Start: 21863, Stop: 22039, Start Num: 20
Candidate Starts for Cerasum_23:
(6, 21647), (Start: 20 @21863 has 82 MA's), (38, 21953), (42, 21965), (46, 21995),

Gene: Charlie_25 Start: 22169, Stop: 22348, Start Num: 20
Candidate Starts for Charlie_25:
(Start: 19 @22166 has 6 MA's), (Start: 20 @22169 has 82 MA's), (37, 22253), (38, 22256),

Gene: Che8_30 Start: 26247, Stop: 26387, Start Num: 26
Candidate Starts for Che8_30:
(Start: 26 @26247 has 118 MA's), (44, 26322),

Gene: Che9c_24 Start: 23013, Stop: 23189, Start Num: 20
Candidate Starts for Che9c_24:
(Start: 20 @23013 has 82 MA's), (Start: 21 @23016 has 32 MA's), (Start: 24 @23040 has 1 MA's),
(38, 23103), (46, 23145),

Gene: Che9d_32 Start: 24809, Stop: 24946, Start Num: 27
Candidate Starts for Che9d_32:
(Start: 27 @24809 has 12 MA's), (44, 24881),

Gene: Chevrolet_28 Start: 25872, Stop: 26012, Start Num: 26
Candidate Starts for Chevrolet_28:
(Start: 26 @25872 has 118 MA's), (44, 25947),

Gene: Chewbacca_25 Start: 22166, Stop: 22348, Start Num: 19
Candidate Starts for Chewbacca_25:
(Start: 19 @22166 has 6 MA's), (Start: 20 @22169 has 82 MA's), (37, 22253), (38, 22256),

Gene: ChickenDinner_30 Start: 26497, Stop: 26634, Start Num: 27
Candidate Starts for ChickenDinner_30:
(Start: 22 @26467 has 79 MA's), (Start: 27 @26497 has 12 MA's), (44, 26569),

Gene: Chuckly_28 Start: 26043, Stop: 26183, Start Num: 26
Candidate Starts for Chuckly_28:

(Start: 26 @26043 has 118 MA's), (44, 26118),

Gene: Clifton_22 Start: 21987, Stop: 22163, Start Num: 20

Candidate Starts for Clifton_22:

(3, 21669), (6, 21771), (Start: 20 @21987 has 82 MA's), (37, 22074), (38, 22077), (42, 22089),

Gene: Coco12_27 Start: 25374, Stop: 25541, Start Num: 22

Candidate Starts for Coco12_27:

(Start: 22 @25374 has 79 MA's), (Start: 27 @25404 has 12 MA's), (44, 25476),

Gene: Cornie_28 Start: 26284, Stop: 26424, Start Num: 26

Candidate Starts for Cornie_28:

(Start: 26 @26284 has 118 MA's), (44, 26359),

Gene: Cornucopia_29 Start: 25927, Stop: 26079, Start Num: 22

Candidate Starts for Cornucopia_29:

(Start: 22 @25927 has 79 MA's), (Start: 27 @25942 has 12 MA's), (44, 26014),

Gene: Courthouse_42 Start: 35249, Stop: 35410, Start Num: 20

Candidate Starts for Courthouse_42:

(Start: 20 @35249 has 82 MA's), (38, 35324), (44, 35348), (46, 35366),

Gene: Crumble_22 Start: 22034, Stop: 22210, Start Num: 20

Candidate Starts for Crumble_22:

(3, 21716), (6, 21818), (Start: 20 @22034 has 82 MA's), (37, 22121), (38, 22124), (42, 22136),

Gene: DLane_28 Start: 25876, Stop: 26028, Start Num: 22

Candidate Starts for DLane_28:

(Start: 22 @25876 has 79 MA's), (Start: 27 @25891 has 12 MA's), (44, 25963),

Gene: DRBy19_28 Start: 25915, Stop: 26049, Start Num: 26

Candidate Starts for DRBy19_28:

(Start: 26 @25915 has 118 MA's), (44, 25984),

Gene: DaWorst_30 Start: 26406, Stop: 26558, Start Num: 22

Candidate Starts for DaWorst_30:

(Start: 22 @26406 has 79 MA's), (Start: 27 @26421 has 12 MA's), (44, 26493),

Gene: DaddyRickover_28 Start: 26046, Stop: 26198, Start Num: 22

Candidate Starts for DaddyRickover_28:

(Start: 22 @26046 has 79 MA's), (Start: 27 @26061 has 12 MA's), (44, 26133),

Gene: Daenerys_28 Start: 25889, Stop: 26029, Start Num: 26

Candidate Starts for Daenerys_28:

(Start: 26 @25889 has 118 MA's), (44, 25964),

Gene: Dante_28 Start: 25935, Stop: 26069, Start Num: 26

Candidate Starts for Dante_28:

(Start: 26 @25935 has 118 MA's), (44, 26004),

Gene: DeadP_28 Start: 26058, Stop: 26225, Start Num: 22

Candidate Starts for DeadP_28:

(Start: 22 @26058 has 79 MA's), (Start: 27 @26088 has 12 MA's), (44, 26160),

Gene: Deb65_28 Start: 25873, Stop: 26025, Start Num: 22
Candidate Starts for Deb65_28:
(Start: 22 @25873 has 79 MA's), (Start: 27 @25888 has 12 MA's), (44, 25960),

Gene: Demsculpinboyz_32 Start: 24795, Stop: 24932, Start Num: 27
Candidate Starts for Demsculpinboyz_32:
(Start: 27 @24795 has 12 MA's), (44, 24867),

Gene: DillTech15_28 Start: 25893, Stop: 26060, Start Num: 22
Candidate Starts for DillTech15_28:
(Start: 22 @25893 has 79 MA's), (Start: 27 @25923 has 12 MA's), (44, 25995),

Gene: DirtMcgirt_29 Start: 25712, Stop: 25852, Start Num: 26
Candidate Starts for DirtMcgirt_29:
(Start: 26 @25712 has 118 MA's), (44, 25787),

Gene: DmpstrDiver_43 Start: 37897, Stop: 38058, Start Num: 20
Candidate Starts for DmpstrDiver_43:
(Start: 20 @37897 has 82 MA's), (38, 37972), (44, 37996), (46, 38014),

Gene: DocMcStuffins_30 Start: 26467, Stop: 26634, Start Num: 22
Candidate Starts for DocMcStuffins_30:
(Start: 22 @26467 has 79 MA's), (Start: 27 @26497 has 12 MA's), (44, 26569),

Gene: Donkeykong_28 Start: 26059, Stop: 26199, Start Num: 26
Candidate Starts for Donkeykong_28:
(Start: 26 @26059 has 118 MA's), (44, 26134),

Gene: Donovan_25 Start: 22868, Stop: 23038, Start Num: 21
Candidate Starts for Donovan_25:
(18, 22856), (Start: 20 @22865 has 82 MA's), (Start: 21 @22868 has 32 MA's), (Start: 24 @22883 has 1 MA's),

Gene: Doomphist_28 Start: 25998, Stop: 26138, Start Num: 26
Candidate Starts for Doomphist_28:
(Start: 26 @25998 has 118 MA's), (44, 26073),

Gene: Dorothy_28 Start: 25831, Stop: 25983, Start Num: 22
Candidate Starts for Dorothy_28:
(Start: 22 @25831 has 79 MA's), (Start: 27 @25846 has 12 MA's), (44, 25918),

Gene: DosHalletts_29 Start: 25988, Stop: 26140, Start Num: 22
Candidate Starts for DosHalletts_29:
(Start: 22 @25988 has 79 MA's), (Start: 27 @26003 has 12 MA's), (44, 26075),

Gene: DotProduct_28 Start: 25865, Stop: 26005, Start Num: 26
Candidate Starts for DotProduct_28:
(Start: 26 @25865 has 118 MA's), (44, 25940),

Gene: Doug_29 Start: 26423, Stop: 26575, Start Num: 22
Candidate Starts for Doug_29:
(Start: 22 @26423 has 79 MA's), (Start: 27 @26438 has 12 MA's), (44, 26510),

Gene: Drago_29 Start: 25698, Stop: 25838, Start Num: 26

Candidate Starts for Drago_29:

(Start: 26 @25698 has 118 MA's), (44, 25773),

Gene: Duplicity_25 Start: 22169, Stop: 22348, Start Num: 20

Candidate Starts for Duplicity_25:

(Start: 19 @22166 has 6 MA's), (Start: 20 @22169 has 82 MA's), (37, 22253), (38, 22256),

Gene: Dynamo_25 Start: 23268, Stop: 23438, Start Num: 21

Candidate Starts for Dynamo_25:

(4, 22953), (Start: 20 @23265 has 82 MA's), (Start: 21 @23268 has 32 MA's), (Start: 24 @23283 has 1 MA's), (40, 23355),

Gene: Eish_28 Start: 26011, Stop: 26163, Start Num: 22

Candidate Starts for Eish_28:

(Start: 22 @26011 has 79 MA's), (Start: 27 @26026 has 12 MA's), (44, 26098),

Gene: EleanorGeorge_28 Start: 26166, Stop: 26333, Start Num: 22

Candidate Starts for EleanorGeorge_28:

(Start: 22 @26166 has 79 MA's), (Start: 27 @26196 has 12 MA's), (44, 26268),

Gene: Emma_30 Start: 26455, Stop: 26598, Start Num: 25

Candidate Starts for Emma_30:

(16, 26395), (Start: 25 @26455 has 2 MA's), (44, 26533),

Gene: Empress_29 Start: 27231, Stop: 27365, Start Num: 26

Candidate Starts for Empress_29:

(Start: 26 @27231 has 118 MA's), (44, 27300),

Gene: Enby_29 Start: 25696, Stop: 25863, Start Num: 22

Candidate Starts for Enby_29:

(Start: 22 @25696 has 79 MA's), (Start: 27 @25726 has 12 MA's), (44, 25798),

Gene: Eradicator_28 Start: 25919, Stop: 26059, Start Num: 26

Candidate Starts for Eradicator_28:

(Start: 26 @25919 has 118 MA's), (44, 25994),

Gene: Estave1_26 Start: 25327, Stop: 25467, Start Num: 26

Candidate Starts for Estave1_26:

(Start: 26 @25327 has 118 MA's), (44, 25402),

Gene: Fancypants_28 Start: 25879, Stop: 26031, Start Num: 22

Candidate Starts for Fancypants_28:

(Start: 22 @25879 has 79 MA's), (Start: 27 @25894 has 12 MA's), (44, 25966),

Gene: Farewell_24 Start: 23918, Stop: 24067, Start Num: 24

Candidate Starts for Farewell_24:

(Start: 24 @23918 has 1 MA's), (38, 23981), (46, 24023),

Gene: Fastidio_30 Start: 26198, Stop: 26341, Start Num: 25

Candidate Starts for Fastidio_30:

(16, 26138), (Start: 25 @26198 has 2 MA's), (29, 26213), (32, 26222), (44, 26276),

Gene: Filuzino_28 Start: 25868, Stop: 26020, Start Num: 22
Candidate Starts for Filuzino_28:
(Start: 22 @25868 has 79 MA's), (Start: 27 @25883 has 12 MA's), (44, 25955),

Gene: Firehouse51_29 Start: 26590, Stop: 26742, Start Num: 22
Candidate Starts for Firehouse51_29:
(Start: 22 @26590 has 79 MA's), (Start: 27 @26605 has 12 MA's), (44, 26677),

Gene: FirstPlacePfu_25 Start: 22879, Stop: 23049, Start Num: 21
Candidate Starts for FirstPlacePfu_25:
(18, 22867), (Start: 20 @22876 has 82 MA's), (Start: 21 @22879 has 32 MA's), (Start: 24 @22894 has 1 MA's),

Gene: Fishburne_25 Start: 22879, Stop: 23049, Start Num: 21
Candidate Starts for Fishburne_25:
(18, 22867), (Start: 20 @22876 has 82 MA's), (Start: 21 @22879 has 32 MA's), (Start: 24 @22894 has 1 MA's),

Gene: Flathead_28 Start: 25891, Stop: 26058, Start Num: 22
Candidate Starts for Flathead_28:
(Start: 22 @25891 has 79 MA's), (Start: 27 @25921 has 12 MA's), (44, 25993),

Gene: Florinda_28 Start: 25889, Stop: 26032, Start Num: 22
Candidate Starts for Florinda_28:
(Start: 22 @25889 has 79 MA's), (Start: 27 @25895 has 12 MA's), (44, 25967),

Gene: Frankie_31 Start: 26420, Stop: 26554, Start Num: 27
Candidate Starts for Frankie_31:
(7, 26195), (10, 26252), (13, 26270), (Start: 27 @26420 has 12 MA's), (36, 26453), (41, 26474), (42, 26477), (43, 26480), (44, 26489),

Gene: FreddyB_28 Start: 26082, Stop: 26216, Start Num: 26
Candidate Starts for FreddyB_28:
(Start: 26 @26082 has 118 MA's), (44, 26151),

Gene: Fruitloop_27 Start: 26062, Stop: 26214, Start Num: 22
Candidate Starts for Fruitloop_27:
(Start: 22 @26062 has 79 MA's), (Start: 27 @26077 has 12 MA's), (44, 26149),

Gene: Fulbright_24 Start: 21973, Stop: 22146, Start Num: 20
Candidate Starts for Fulbright_24:
(3, 21655), (6, 21757), (Start: 20 @21973 has 82 MA's), (37, 22057), (38, 22060), (42, 22072),

Gene: GUmble_28 Start: 25894, Stop: 26034, Start Num: 26
Candidate Starts for GUmble_28:
(Start: 26 @25894 has 118 MA's), (44, 25969),

Gene: Galactic_28 Start: 25877, Stop: 26014, Start Num: 27
Candidate Starts for Galactic_28:
(Start: 27 @25877 has 12 MA's), (44, 25949),

Gene: Gandolph_28 Start: 25972, Stop: 26124, Start Num: 22

Candidate Starts for Gandalph_28:

(Start: 22 @25972 has 79 MA's), (Start: 27 @25987 has 12 MA's), (44, 26059),

Gene: Geralt_28 Start: 25872, Stop: 26024, Start Num: 22

Candidate Starts for Geralt_28:

(Start: 22 @25872 has 79 MA's), (Start: 27 @25887 has 12 MA's), (44, 25959),

Gene: Gex_25 Start: 22165, Stop: 22344, Start Num: 20

Candidate Starts for Gex_25:

(Start: 19 @22162 has 6 MA's), (Start: 20 @22165 has 82 MA's), (37, 22249), (38, 22252),

Gene: GigiOuiOui_28 Start: 26018, Stop: 26158, Start Num: 26

Candidate Starts for GigiOuiOui_28:

(Start: 26 @26018 has 118 MA's), (44, 26093),

Gene: Girafales_29 Start: 25697, Stop: 25840, Start Num: 22

Candidate Starts for Girafales_29:

(Start: 22 @25697 has 79 MA's), (Start: 27 @25703 has 12 MA's), (44, 25775),

Gene: Girr_28 Start: 25857, Stop: 25991, Start Num: 26

Candidate Starts for Girr_28:

(Start: 26 @25857 has 118 MA's), (44, 25926),

Gene: Glaske_25 Start: 23141, Stop: 23314, Start Num: 20

Candidate Starts for Glaske_25:

(Start: 20 @23141 has 82 MA's), (Start: 21 @23144 has 32 MA's), (Start: 24 @23159 has 1 MA's),

Gene: Gonephishing_43 Start: 36458, Stop: 36619, Start Num: 20

Candidate Starts for Gonephishing_43:

(Start: 20 @36458 has 82 MA's), (46, 36575),

Gene: Gorge_28 Start: 26049, Stop: 26183, Start Num: 26

Candidate Starts for Gorge_28:

(Start: 26 @26049 has 118 MA's), (44, 26118),

Gene: GreaseLightnin_25 Start: 23125, Stop: 23301, Start Num: 20

Candidate Starts for GreaseLightnin_25:

(1, 22621), (6, 22909), (Start: 20 @23125 has 82 MA's), (38, 23215),

Gene: Guppsters_29 Start: 26159, Stop: 26299, Start Num: 26

Candidate Starts for Guppsters_29:

(Start: 26 @26159 has 118 MA's), (44, 26234),

Gene: HC_25 Start: 22949, Stop: 23119, Start Num: 21

Candidate Starts for HC_25:

(18, 22937), (Start: 20 @22946 has 82 MA's), (Start: 21 @22949 has 32 MA's), (Start: 24 @22964 has 1 MA's), (38, 23033),

Gene: HUHilltop_25 Start: 22879, Stop: 23049, Start Num: 21

Candidate Starts for HUHilltop_25:

(18, 22867), (Start: 20 @22876 has 82 MA's), (Start: 21 @22879 has 32 MA's), (Start: 24 @22894 has 1 MA's), (38, 22963), (41, 22972),

Gene: Hades_28 Start: 25964, Stop: 26116, Start Num: 22
Candidate Starts for Hades_28:
(Start: 22 @25964 has 79 MA's), (Start: 27 @25979 has 12 MA's), (44, 26051),

Gene: Hamulus_28 Start: 26041, Stop: 26181, Start Num: 26
Candidate Starts for Hamulus_28:
(Start: 26 @26041 has 118 MA's), (44, 26116),

Gene: Hanako_24 Start: 21647, Stop: 21823, Start Num: 20
Candidate Starts for Hanako_24:
(3, 21329), (6, 21431), (Start: 20 @21647 has 82 MA's), (38, 21737), (44, 21761), (46, 21779),

Gene: Hannaconda_39 Start: 33830, Stop: 33991, Start Num: 20
Candidate Starts for Hannaconda_39:
(Start: 20 @33830 has 82 MA's), (38, 33905), (44, 33929), (46, 33947),

Gene: Harley_28 Start: 25828, Stop: 25968, Start Num: 26
Candidate Starts for Harley_28:
(Start: 26 @25828 has 118 MA's), (44, 25903),

Gene: Hegedechwinu_29 Start: 25873, Stop: 26040, Start Num: 22
Candidate Starts for Hegedechwinu_29:
(Start: 22 @25873 has 79 MA's), (Start: 27 @25903 has 12 MA's), (44, 25975),

Gene: Hlubikazi_28 Start: 26131, Stop: 26283, Start Num: 22
Candidate Starts for Hlubikazi_28:
(Start: 22 @26131 has 79 MA's), (Start: 27 @26146 has 12 MA's), (44, 26218),

Gene: IMpilo_27 Start: 25655, Stop: 25807, Start Num: 22
Candidate Starts for IMpilo_27:
(Start: 22 @25655 has 79 MA's), (Start: 27 @25670 has 12 MA's), (44, 25742),

Gene: IbOuu_30 Start: 25887, Stop: 26039, Start Num: 22
Candidate Starts for IbOuu_30:
(Start: 22 @25887 has 79 MA's), (Start: 27 @25902 has 12 MA's), (44, 25974),

Gene: Ibhubesi_28 Start: 25835, Stop: 25975, Start Num: 26
Candidate Starts for Ibhubesi_28:
(Start: 26 @25835 has 118 MA's), (44, 25910),

Gene: IdentityCrisis_24 Start: 20626, Stop: 20802, Start Num: 20
Candidate Starts for IdentityCrisis_24:
(Start: 20 @20626 has 82 MA's), (33, 20686), (37, 20713), (38, 20716), (46, 20758), (47, 20761),

Gene: Inventum_28 Start: 26013, Stop: 26147, Start Num: 26
Candidate Starts for Inventum_28:
(Start: 26 @26013 has 118 MA's), (44, 26082),

Gene: IrishSherpFalk_29 Start: 27208, Stop: 27375, Start Num: 22
Candidate Starts for IrishSherpFalk_29:
(Start: 22 @27208 has 79 MA's), (Start: 27 @27238 has 12 MA's), (44, 27310),

Gene: Island3_28 Start: 25093, Stop: 25227, Start Num: 30

Candidate Starts for Island3_28:
(Start: 30 @25093 has 5 MA's), (35, 25126), (38, 25141), (39, 25144),

Gene: Jabbawokkie_35 Start: 26242, Stop: 26379, Start Num: 27
Candidate Starts for Jabbawokkie_35:
(11, 26086), (Start: 27 @26242 has 12 MA's), (44, 26314),

Gene: JalFarm20_30 Start: 26395, Stop: 26562, Start Num: 22
Candidate Starts for JalFarm20_30:
(Start: 22 @26395 has 79 MA's), (Start: 27 @26425 has 12 MA's), (44, 26497),

Gene: James_28 Start: 26045, Stop: 26179, Start Num: 26
Candidate Starts for James_28:
(Start: 26 @26045 has 118 MA's), (44, 26114),

Gene: Jamie19_24 Start: 21647, Stop: 21823, Start Num: 20
Candidate Starts for Jamie19_24:
(6, 21431), (Start: 20 @21647 has 82 MA's), (38, 21737), (44, 21761), (46, 21779),

Gene: Jacob_28 Start: 26080, Stop: 26214, Start Num: 26
Candidate Starts for Jacob_28:
(Start: 26 @26080 has 118 MA's), (44, 26149),

Gene: Jebeks_25 Start: 22864, Stop: 23034, Start Num: 21
Candidate Starts for Jebeks_25:
(18, 22852), (Start: 20 @22861 has 82 MA's), (Start: 21 @22864 has 32 MA's), (Start: 24 @22879 has 1 MA's),

Gene: Jinglebell_27 Start: 26098, Stop: 26238, Start Num: 26
Candidate Starts for Jinglebell_27:
(Start: 26 @26098 has 118 MA's), (44, 26173),

Gene: Job42_31 Start: 27602, Stop: 27754, Start Num: 22
Candidate Starts for Job42_31:
(Start: 22 @27602 has 79 MA's), (Start: 27 @27617 has 12 MA's), (44, 27689),

Gene: JoeyJr_28 Start: 26057, Stop: 26197, Start Num: 26
Candidate Starts for JoeyJr_28:
(Start: 26 @26057 has 118 MA's), (44, 26132),

Gene: Journey_25 Start: 22169, Stop: 22348, Start Num: 20
Candidate Starts for Journey_25:
(Start: 19 @22166 has 6 MA's), (Start: 20 @22169 has 82 MA's), (37, 22253), (38, 22256),

Gene: Juice456_29 Start: 27144, Stop: 27311, Start Num: 22
Candidate Starts for Juice456_29:
(Start: 22 @27144 has 79 MA's), (Start: 27 @27174 has 12 MA's), (44, 27246),

Gene: Juniormint_25 Start: 22923, Stop: 23093, Start Num: 21
Candidate Starts for Juniormint_25:
(18, 22911), (Start: 20 @22920 has 82 MA's), (Start: 21 @22923 has 32 MA's), (Start: 24 @22938 has 1 MA's),

Gene: Juniper1_28 Start: 25857, Stop: 25997, Start Num: 26
Candidate Starts for Juniper1_28:
(Start: 26 @25857 has 118 MA's), (44, 25932),

Gene: Karhdo_28 Start: 26020, Stop: 26160, Start Num: 26
Candidate Starts for Karhdo_28:
(Start: 26 @26020 has 118 MA's), (44, 26095),

Gene: Kari_25 Start: 22879, Stop: 23046, Start Num: 21
Candidate Starts for Kari_25:
(Start: 20 @22876 has 82 MA's), (Start: 21 @22879 has 32 MA's), (Start: 24 @22894 has 1 MA's),
(38, 22960), (39, 22963), (41, 22969),

Gene: KashFlow_36 Start: 33451, Stop: 33612, Start Num: 20
Candidate Starts for KashFlow_36:
(Start: 20 @33451 has 82 MA's), (38, 33526), (44, 33550), (46, 33568),

Gene: Kenuha5_25 Start: 25038, Stop: 25178, Start Num: 26
Candidate Starts for Kenuha5_25:
(Start: 26 @25038 has 118 MA's), (44, 25113),

Gene: Kevin1_25 Start: 21582, Stop: 21752, Start Num: 21
Candidate Starts for Kevin1_25:
(5, 21339), (Start: 20 @21579 has 82 MA's), (Start: 21 @21582 has 32 MA's), (Start: 24 @21597 has
1 MA's), (40, 21669),

Gene: KilKor_25 Start: 23141, Stop: 23314, Start Num: 20
Candidate Starts for KilKor_25:
(Start: 20 @23141 has 82 MA's), (Start: 21 @23144 has 32 MA's), (Start: 24 @23159 has 1 MA's),

Gene: Kimberlium_30 Start: 27010, Stop: 27150, Start Num: 26
Candidate Starts for Kimberlium_30:
(Start: 26 @27010 has 118 MA's), (44, 27085),

Gene: KingMidas_29 Start: 27185, Stop: 27325, Start Num: 26
Candidate Starts for KingMidas_29:
(Start: 26 @27185 has 118 MA's), (44, 27260),

Gene: Kingsley_26 Start: 24838, Stop: 25005, Start Num: 22
Candidate Starts for Kingsley_26:
(Start: 22 @24838 has 79 MA's), (Start: 27 @24868 has 12 MA's), (44, 24940),

Gene: Koella_22 Start: 21999, Stop: 22175, Start Num: 20
Candidate Starts for Koella_22:
(3, 21681), (6, 21783), (Start: 20 @21999 has 82 MA's), (37, 22086), (38, 22089), (42, 22101),

Gene: Krakatau_29 Start: 26546, Stop: 26698, Start Num: 22
Candidate Starts for Krakatau_29:
(Start: 22 @26546 has 79 MA's), (Start: 27 @26561 has 12 MA's), (44, 26633),

Gene: KristaRAM_29 Start: 26704, Stop: 26871, Start Num: 22
Candidate Starts for KristaRAM_29:
(Start: 22 @26704 has 79 MA's), (Start: 27 @26734 has 12 MA's), (44, 26806),

Gene: Ksquared_25 Start: 22901, Stop: 23071, Start Num: 21
Candidate Starts for Ksquared_25:
(18, 22889), (Start: 20 @22898 has 82 MA's), (Start: 21 @22901 has 32 MA's), (Start: 24 @22916 has 1 MA's),

Gene: Langerak_25 Start: 22863, Stop: 23033, Start Num: 21
Candidate Starts for Langerak_25:
(18, 22851), (Start: 20 @22860 has 82 MA's), (Start: 21 @22863 has 32 MA's), (Start: 24 @22878 has 1 MA's), (38, 22947), (41, 22956),

Gene: LastJedi_22 Start: 22030, Stop: 22206, Start Num: 20
Candidate Starts for LastJedi_22:
(3, 21712), (6, 21814), (Start: 20 @22030 has 82 MA's), (37, 22117), (38, 22120), (42, 22132),

Gene: Latretium_29 Start: 26693, Stop: 26830, Start Num: 28
Candidate Starts for Latretium_29:
(15, 26597), (Start: 28 @26693 has 2 MA's), (44, 26762), (48, 26795),

Gene: Leozinho_29 Start: 25731, Stop: 25883, Start Num: 22
Candidate Starts for Leozinho_29:
(Start: 22 @25731 has 79 MA's), (Start: 27 @25746 has 12 MA's), (44, 25818),

Gene: Leperchaun_28 Start: 25946, Stop: 26086, Start Num: 26
Candidate Starts for Leperchaun_28:
(Start: 26 @25946 has 118 MA's), (44, 26021),

Gene: LilMoolah_28 Start: 26164, Stop: 26304, Start Num: 26
Candidate Starts for LilMoolah_28:
(Start: 26 @26164 has 118 MA's), (44, 26239),

Gene: LilSpotty_28 Start: 23137, Stop: 23316, Start Num: 20
Candidate Starts for LilSpotty_28:
(Start: 19 @23134 has 6 MA's), (Start: 20 @23137 has 82 MA's), (37, 23221), (38, 23224),

Gene: LittleE_48 Start: 39362, Stop: 39508, Start Num: 20
Candidate Starts for LittleE_48:
(Start: 20 @39362 has 82 MA's), (38, 39422), (44, 39446), (46, 39464),

Gene: LittleShirley_29 Start: 25827, Stop: 25964, Start Num: 26
Candidate Starts for LittleShirley_29:
(Start: 26 @25827 has 118 MA's), (45, 25908),

Gene: Lizziana_28 Start: 26039, Stop: 26179, Start Num: 26
Candidate Starts for Lizziana_28:
(Start: 26 @26039 has 118 MA's), (44, 26114),

Gene: Llama_28 Start: 26097, Stop: 26237, Start Num: 26
Candidate Starts for Llama_28:
(Start: 26 @26097 has 118 MA's), (44, 26172),

Gene: Llij_28 Start: 25862, Stop: 26002, Start Num: 26
Candidate Starts for Llij_28:

(Start: 26 @25862 has 118 MA's), (44, 25937),

Gene: Lorde_29 Start: 25698, Stop: 25838, Start Num: 26

Candidate Starts for Lorde_29:

(Start: 26 @25698 has 118 MA's), (44, 25773),

Gene: Lucky2013_42 Start: 35376, Stop: 35537, Start Num: 20

Candidate Starts for Lucky2013_42:

(Start: 20 @35376 has 82 MA's), (38, 35451), (44, 35475), (46, 35493),

Gene: LunaBlu_29 Start: 26100, Stop: 26240, Start Num: 26

Candidate Starts for LunaBlu_29:

(Start: 26 @26100 has 118 MA's), (44, 26175),

Gene: LunaStella_29 Start: 26164, Stop: 26301, Start Num: 27

Candidate Starts for LunaStella_29:

(Start: 27 @26164 has 12 MA's), (44, 26236),

Gene: MadMen_25 Start: 25147, Stop: 25287, Start Num: 26

Candidate Starts for MadMen_25:

(Start: 26 @25147 has 118 MA's), (44, 25222),

Gene: Madiba_26 Start: 24800, Stop: 24940, Start Num: 26

Candidate Starts for Madiba_26:

(Start: 26 @24800 has 118 MA's), (44, 24875),

Gene: Magsby_25 Start: 22166, Stop: 22345, Start Num: 20

Candidate Starts for Magsby_25:

(Start: 19 @22163 has 6 MA's), (Start: 20 @22166 has 82 MA's), (37, 22250), (38, 22253),

Gene: Mahavrat_28 Start: 25850, Stop: 25990, Start Num: 26

Candidate Starts for Mahavrat_28:

(Start: 26 @25850 has 118 MA's), (44, 25925),

Gene: Majeke_25 Start: 22882, Stop: 23055, Start Num: 20

Candidate Starts for Majeke_25:

(18, 22873), (Start: 20 @22882 has 82 MA's), (Start: 21 @22885 has 32 MA's), (Start: 24 @22900 has 1 MA's),

Gene: Malithi_25 Start: 22801, Stop: 22974, Start Num: 20

Candidate Starts for Malithi_25:

(18, 22792), (Start: 20 @22801 has 82 MA's), (Start: 21 @22804 has 32 MA's), (Start: 24 @22819 has 1 MA's),

Gene: Mandlovu_28 Start: 26073, Stop: 26225, Start Num: 22

Candidate Starts for Mandlovu_28:

(Start: 22 @26073 has 79 MA's), (Start: 27 @26088 has 12 MA's), (44, 26160),

Gene: Mangethe_25 Start: 22882, Stop: 23055, Start Num: 20

Candidate Starts for Mangethe_25:

(18, 22873), (Start: 20 @22882 has 82 MA's), (Start: 21 @22885 has 32 MA's), (Start: 24 @22900 has 1 MA's),

Gene: Mantra_28 Start: 25987, Stop: 26127, Start Num: 26

Candidate Starts for Mantra_28:

(Start: 26 @25987 has 118 MA's), (44, 26062),

Gene: Maravista_28 Start: 25821, Stop: 25961, Start Num: 26

Candidate Starts for Maravista_28:

(Start: 26 @25821 has 118 MA's), (44, 25896),

Gene: Marker_29 Start: 25737, Stop: 25889, Start Num: 22

Candidate Starts for Marker_29:

(Start: 22 @25737 has 79 MA's), (Start: 27 @25752 has 12 MA's), (44, 25824),

Gene: Martik_28 Start: 26066, Stop: 26206, Start Num: 26

Candidate Starts for Martik_28:

(Start: 26 @26066 has 118 MA's), (44, 26141),

Gene: Mattes_28 Start: 26045, Stop: 26179, Start Num: 26

Candidate Starts for Mattes_28:

(Start: 26 @26045 has 118 MA's), (44, 26114),

Gene: Megiddo_25 Start: 23141, Stop: 23314, Start Num: 20

Candidate Starts for Megiddo_25:

(Start: 20 @23141 has 82 MA's), (Start: 21 @23144 has 32 MA's), (Start: 24 @23159 has 1 MA's),

Gene: Melissauren88_28 Start: 26058, Stop: 26210, Start Num: 22

Candidate Starts for Melissauren88_28:

(Start: 22 @26058 has 79 MA's), (Start: 27 @26073 has 12 MA's), (44, 26145),

Gene: Melville_25 Start: 22169, Stop: 22348, Start Num: 20

Candidate Starts for Melville_25:

(Start: 19 @22166 has 6 MA's), (Start: 20 @22169 has 82 MA's), (37, 22253), (38, 22256),

Gene: MiaZeal_42 Start: 35060, Stop: 35221, Start Num: 20

Candidate Starts for MiaZeal_42:

(Start: 20 @35060 has 82 MA's), (38, 35135), (44, 35159), (46, 35177),

Gene: MichelleMyBell_25 Start: 21653, Stop: 21820, Start Num: 21

Candidate Starts for MichelleMyBell_25:

(2, 21323), (Start: 20 @21650 has 82 MA's), (Start: 21 @21653 has 32 MA's), (38, 21734),

Gene: MilanaBonita_22 Start: 21918, Stop: 22094, Start Num: 20

Candidate Starts for MilanaBonita_22:

(Start: 20 @21918 has 82 MA's), (41, 22017), (46, 22050),

Gene: MilleniumForce_29 Start: 26835, Stop: 27002, Start Num: 22

Candidate Starts for MilleniumForce_29:

(Start: 22 @26835 has 79 MA's), (Start: 27 @26865 has 12 MA's), (44, 26937),

Gene: MinionDave_29 Start: 26258, Stop: 26398, Start Num: 26

Candidate Starts for MinionDave_29:

(Start: 26 @26258 has 118 MA's), (44, 26333),

Gene: Minnie_29 Start: 26603, Stop: 26740, Start Num: 27

Candidate Starts for Minnie_29:

(Start: 22 @26573 has 79 MA's), (Start: 27 @26603 has 12 MA's), (44, 26675),

Gene: Misha28_29 Start: 25746, Stop: 25898, Start Num: 22

Candidate Starts for Misha28_29:

(Start: 22 @25746 has 79 MA's), (Start: 27 @25761 has 12 MA's), (44, 25833),

Gene: MisterCuddles_28 Start: 25857, Stop: 25991, Start Num: 26

Candidate Starts for MisterCuddles_28:

(Start: 26 @25857 has 118 MA's), (44, 25926),

Gene: Modragons_28 Start: 25942, Stop: 26082, Start Num: 26

Candidate Starts for Modragons_28:

(Start: 26 @25942 has 118 MA's), (44, 26017),

Gene: MooMoo_26 Start: 24806, Stop: 24943, Start Num: 28

Candidate Starts for MooMoo_26:

(Start: 28 @24806 has 2 MA's), (34, 24830), (44, 24875), (48, 24908),

Gene: Moonbeam_29 Start: 26528, Stop: 26695, Start Num: 22

Candidate Starts for Moonbeam_29:

(Start: 22 @26528 has 79 MA's), (Start: 27 @26558 has 12 MA's), (44, 26630),

Gene: Mova_29 Start: 25725, Stop: 25892, Start Num: 22

Candidate Starts for Mova_29:

(Start: 22 @25725 has 79 MA's), (Start: 27 @25755 has 12 MA's), (44, 25827),

Gene: Mozy_29 Start: 25935, Stop: 26087, Start Num: 22

Candidate Starts for Mozy_29:

(Start: 22 @25935 has 79 MA's), (Start: 27 @25950 has 12 MA's), (44, 26022),

Gene: Ms6_22 Start: 21500, Stop: 21676, Start Num: 20

Candidate Starts for Ms6_22:

(6, 21284), (Start: 20 @21500 has 82 MA's), (46, 21632),

Gene: MulchExplorer_31 Start: 27010, Stop: 27150, Start Num: 26

Candidate Starts for MulchExplorer_31:

(Start: 26 @27010 has 118 MA's), (44, 27085),

Gene: MulchSalad_24 Start: 21938, Stop: 22111, Start Num: 20

Candidate Starts for MulchSalad_24:

(Start: 19 @21935 has 6 MA's), (Start: 20 @21938 has 82 MA's), (38, 22025),

Gene: Mutaforma13_28 Start: 26073, Stop: 26213, Start Num: 26

Candidate Starts for Mutaforma13_28:

(Start: 26 @26073 has 118 MA's), (44, 26148),

Gene: Nazo_25 Start: 23510, Stop: 23686, Start Num: 21

Candidate Starts for Nazo_25:

(Start: 20 @23507 has 82 MA's), (Start: 21 @23510 has 32 MA's), (23, 23531), (Start: 24 @23534 has 1 MA's), (29, 23555), (36, 23588), (38, 23600),

Gene: Necropolis_25 Start: 22876, Stop: 23049, Start Num: 20

Candidate Starts for Necropolis_25:

(18, 22867), (Start: 20 @22876 has 82 MA's), (Start: 21 @22879 has 32 MA's), (Start: 24 @22894 has 1 MA's),

Gene: Nенаe_24 Start: 21647, Stop: 21823, Start Num: 20

Candidate Starts for Nенаe_24:

(3, 21329), (6, 21431), (Start: 20 @21647 has 82 MA's), (38, 21737), (44, 21761), (46, 21779),

Gene: Nimbo_28 Start: 25893, Stop: 26033, Start Num: 26

Candidate Starts for Nimbo_28:

(Start: 26 @25893 has 118 MA's), (44, 25968),

Gene: Nitzel_29 Start: 26607, Stop: 26747, Start Num: 26

Candidate Starts for Nitzel_29:

(Start: 26 @26607 has 118 MA's), (44, 26682),

Gene: Nivrat_28 Start: 26038, Stop: 26178, Start Num: 26

Candidate Starts for Nivrat_28:

(Start: 26 @26038 has 118 MA's), (44, 26113),

Gene: NormanBulbieJr_28 Start: 26053, Stop: 26193, Start Num: 26

Candidate Starts for NormanBulbieJr_28:

(Start: 26 @26053 has 118 MA's), (44, 26128),

Gene: Ochi17_26 Start: 25511, Stop: 25684, Start Num: 20

Candidate Starts for Ochi17_26:

(8, 25340), (9, 25343), (12, 25403), (14, 25427), (Start: 20 @25511 has 82 MA's), (46, 25640),

Gene: OfUltron_28 Start: 26098, Stop: 26238, Start Num: 26

Candidate Starts for OfUltron_28:

(Start: 26 @26098 has 118 MA's), (44, 26173),

Gene: Ogopogo_28 Start: 25248, Stop: 25388, Start Num: 26

Candidate Starts for Ogopogo_28:

(Start: 26 @25248 has 118 MA's), (44, 25323),

Gene: Oksu_29 Start: 25942, Stop: 26082, Start Num: 26

Candidate Starts for Oksu_29:

(Start: 26 @25942 has 118 MA's), (44, 26017),

Gene: OldBen_28 Start: 25852, Stop: 25986, Start Num: 26

Candidate Starts for OldBen_28:

(Start: 26 @25852 has 118 MA's), (44, 25921),

Gene: OlympiaSaint_28 Start: 26268, Stop: 26402, Start Num: 26

Candidate Starts for OlympiaSaint_28:

(Start: 26 @26268 has 118 MA's), (44, 26337),

Gene: Omega_47 Start: 39998, Stop: 40156, Start Num: 20

Candidate Starts for Omega_47:

(Start: 20 @39998 has 82 MA's), (46, 40112),

Gene: Optimus_46 Start: 39166, Stop: 39324, Start Num: 20

Candidate Starts for Optimus_46:
(Start: 20 @39166 has 82 MA's), (38, 39238), (42, 39250), (46, 39280),

Gene: Ovechkin_28 Start: 26030, Stop: 26197, Start Num: 22
Candidate Starts for Ovechkin_28:
(Start: 22 @26030 has 79 MA's), (Start: 27 @26060 has 12 MA's), (44, 26132),

Gene: OwlsT2W_29 Start: 26324, Stop: 26476, Start Num: 22
Candidate Starts for OwlsT2W_29:
(Start: 22 @26324 has 79 MA's), (Start: 27 @26339 has 12 MA's), (44, 26411),

Gene: PHappiness_28 Start: 25867, Stop: 26007, Start Num: 26
Candidate Starts for PHappiness_28:
(Start: 26 @25867 has 118 MA's), (44, 25942),

Gene: PMC_28 Start: 25862, Stop: 26002, Start Num: 26
Candidate Starts for PMC_28:
(Start: 26 @25862 has 118 MA's), (44, 25937),

Gene: Pacc40_28 Start: 26042, Stop: 26182, Start Num: 26
Candidate Starts for Pacc40_28:
(Start: 26 @26042 has 118 MA's), (44, 26117),

Gene: Panchino_24 Start: 21760, Stop: 21927, Start Num: 20
Candidate Starts for Panchino_24:
(5, 21520), (Start: 20 @21760 has 82 MA's), (Start: 21 @21763 has 32 MA's), (Start: 24 @21778 has 1 MA's), (38, 21841), (46, 21883),

Gene: Parmesanjohn_25 Start: 22169, Stop: 22348, Start Num: 20
Candidate Starts for Parmesanjohn_25:
(Start: 19 @22166 has 6 MA's), (Start: 20 @22169 has 82 MA's), (37, 22253), (38, 22256),

Gene: Phalconet_28 Start: 25961, Stop: 26113, Start Num: 22
Candidate Starts for Phalconet_28:
(Start: 22 @25961 has 79 MA's), (Start: 27 @25976 has 12 MA's), (44, 26048),

Gene: Phalm_25 Start: 23141, Stop: 23314, Start Num: 20
Candidate Starts for Phalm_25:
(Start: 20 @23141 has 82 MA's), (Start: 21 @23144 has 32 MA's), (Start: 24 @23159 has 1 MA's),

Gene: PhancyPhin_24 Start: 21644, Stop: 21820, Start Num: 20
Candidate Starts for PhancyPhin_24:
(3, 21326), (6, 21428), (Start: 20 @21644 has 82 MA's), (38, 21734), (44, 21758), (46, 21776),

Gene: Phanphagia_25 Start: 25032, Stop: 25199, Start Num: 22
Candidate Starts for Phanphagia_25:
(Start: 22 @25032 has 79 MA's), (Start: 27 @25062 has 12 MA's), (44, 25134),

Gene: Phasih_29 Start: 26431, Stop: 26571, Start Num: 26
Candidate Starts for Phasih_29:
(Start: 26 @26431 has 118 MA's), (44, 26506),

Gene: Phatniss_29 Start: 26379, Stop: 26519, Start Num: 26

Candidate Starts for Phatniss_29:
(Start: 26 @26379 has 118 MA's), (44, 26454),

Gene: Phayonce_25 Start: 23436, Stop: 23615, Start Num: 21
Candidate Starts for Phayonce_25:
(2, 23106), (Start: 20 @23433 has 82 MA's), (Start: 21 @23436 has 32 MA's), (Start: 24 @23460 has 1 MA's), (31, 23487), (40, 23532),

Gene: Phegasus_25 Start: 22885, Stop: 23055, Start Num: 21
Candidate Starts for Phegasus_25:
(18, 22873), (Start: 20 @22882 has 82 MA's), (Start: 21 @22885 has 32 MA's), (Start: 24 @22900 has 1 MA's),

Gene: PhesterPhotato_28 Start: 25881, Stop: 26033, Start Num: 22
Candidate Starts for PhesterPhotato_28:
(Start: 22 @25881 has 79 MA's), (Start: 27 @25896 has 12 MA's), (44, 25968),

Gene: Philonius_25 Start: 22166, Stop: 22348, Start Num: 19
Candidate Starts for Philonius_25:
(Start: 19 @22166 has 6 MA's), (Start: 20 @22169 has 82 MA's), (37, 22253), (38, 22256),

Gene: Philus_28 Start: 25891, Stop: 26025, Start Num: 26
Candidate Starts for Philus_28:
(Start: 26 @25891 has 118 MA's), (44, 25960),

Gene: Phineas_25 Start: 23247, Stop: 23420, Start Num: 20
Candidate Starts for Phineas_25:
(18, 23238), (Start: 20 @23247 has 82 MA's), (Start: 21 @23250 has 32 MA's), (Start: 24 @23265 has 1 MA's),

Gene: Phloss_24 Start: 21976, Stop: 22149, Start Num: 20
Candidate Starts for Phloss_24:
(3, 21658), (6, 21760), (Start: 20 @21976 has 82 MA's), (37, 22060), (38, 22063), (42, 22075),

Gene: Phrann_24 Start: 22023, Stop: 22196, Start Num: 20
Candidate Starts for Phrann_24:
(Start: 20 @22023 has 82 MA's), (Start: 21 @22026 has 32 MA's), (Start: 24 @22041 has 1 MA's), (38, 22110), (39, 22113), (41, 22119),

Gene: Piper2020_30 Start: 26484, Stop: 26618, Start Num: 26
Candidate Starts for Piper2020_30:
(Start: 26 @26484 has 118 MA's), (44, 26553),

Gene: Pippy_22 Start: 22026, Stop: 22202, Start Num: 20
Candidate Starts for Pippy_22:
(3, 21708), (6, 21810), (Start: 20 @22026 has 82 MA's), (37, 22113), (38, 22116), (42, 22128),

Gene: Pipsqueaks_25 Start: 22166, Stop: 22348, Start Num: 19
Candidate Starts for Pipsqueaks_25:
(Start: 19 @22166 has 6 MA's), (Start: 20 @22169 has 82 MA's), (37, 22253), (38, 22256),

Gene: Plumbus_29 Start: 25705, Stop: 25857, Start Num: 22
Candidate Starts for Plumbus_29:

(Start: 22 @25705 has 79 MA's), (Start: 27 @25720 has 12 MA's), (44, 25792),

Gene: Poenanya_28 Start: 25998, Stop: 26138, Start Num: 26

Candidate Starts for Poenanya_28:

(Start: 26 @25998 has 118 MA's), (44, 26073),

Gene: Polka14_29 Start: 26413, Stop: 26565, Start Num: 22

Candidate Starts for Polka14_29:

(Start: 22 @26413 has 79 MA's), (Start: 27 @26428 has 12 MA's), (44, 26500),

Gene: Polkaroo_25 Start: 22895, Stop: 23065, Start Num: 21

Candidate Starts for Polkaroo_25:

(18, 22883), (Start: 20 @22892 has 82 MA's), (Start: 21 @22895 has 32 MA's), (Start: 24 @22910 has 1 MA's),

Gene: Pollywog_28 Start: 26127, Stop: 26267, Start Num: 26

Candidate Starts for Pollywog_28:

(Start: 26 @26127 has 118 MA's), (44, 26202),

Gene: PopTart_28 Start: 26073, Stop: 26240, Start Num: 22

Candidate Starts for PopTart_28:

(Start: 22 @26073 has 79 MA's), (Start: 27 @26103 has 12 MA's), (44, 26175),

Gene: Porcelain_41 Start: 35060, Stop: 35221, Start Num: 20

Candidate Starts for Porcelain_41:

(Start: 20 @35060 has 82 MA's), (38, 35135), (44, 35159), (46, 35177),

Gene: Priscilla_28 Start: 26082, Stop: 26216, Start Num: 26

Candidate Starts for Priscilla_28:

(Start: 26 @26082 has 118 MA's), (44, 26151),

Gene: Purgamenstris_24 Start: 21647, Stop: 21823, Start Num: 20

Candidate Starts for Purgamenstris_24:

(3, 21329), (6, 21431), (Start: 20 @21647 has 82 MA's), (38, 21737), (44, 21761), (46, 21779),

Gene: Purky_25 Start: 23130, Stop: 23306, Start Num: 20

Candidate Starts for Purky_25:

(Start: 20 @23130 has 82 MA's), (Start: 21 @23133 has 32 MA's), (34, 23199), (37, 23217), (38, 23220), (42, 23232), (46, 23262),

Gene: Pygmy_27 Start: 24738, Stop: 24872, Start Num: 30

Candidate Starts for Pygmy_27:

(Start: 30 @24738 has 5 MA's), (35, 24771), (38, 24786), (39, 24789),

Gene: QueenHazel_24 Start: 23056, Stop: 23232, Start Num: 20

Candidate Starts for QueenHazel_24:

(6, 22840), (Start: 20 @23056 has 82 MA's), (37, 23143),

Gene: QuickMath_29 Start: 27234, Stop: 27374, Start Num: 26

Candidate Starts for QuickMath_29:

(Start: 26 @27234 has 118 MA's), (44, 27309),

Gene: Quico_29 Start: 25697, Stop: 25840, Start Num: 22

Candidate Starts for Quico_29:

(Start: 22 @25697 has 79 MA's), (Start: 27 @25703 has 12 MA's), (44, 25775),

Gene: Radiance_28 Start: 25990, Stop: 26124, Start Num: 26

Candidate Starts for Radiance_28:

(Start: 26 @25990 has 118 MA's), (44, 26059),

Gene: Ramsey_29 Start: 25906, Stop: 26058, Start Num: 22

Candidate Starts for Ramsey_29:

(Start: 22 @25906 has 79 MA's), (Start: 27 @25921 has 12 MA's), (44, 25993),

Gene: Raymond7_24 Start: 22039, Stop: 22206, Start Num: 21

Candidate Starts for Raymond7_24:

(2, 21709), (Start: 20 @22036 has 82 MA's), (Start: 21 @22039 has 32 MA's), (38, 22120),

Gene: Rebel_24 Start: 21448, Stop: 21612, Start Num: 21

Candidate Starts for Rebel_24:

(Start: 20 @21445 has 82 MA's), (Start: 21 @21448 has 32 MA's), (Start: 24 @21463 has 1 MA's), (38, 21526), (46, 21568),

Gene: RedBird_28 Start: 25808, Stop: 25948, Start Num: 26

Candidate Starts for RedBird_28:

(Start: 26 @25808 has 118 MA's), (44, 25883),

Gene: Redi_24 Start: 21647, Stop: 21823, Start Num: 20

Candidate Starts for Redi_24:

(3, 21329), (6, 21431), (Start: 20 @21647 has 82 MA's), (38, 21737), (44, 21761), (46, 21779),

Gene: Renaud18_28 Start: 26074, Stop: 26214, Start Num: 26

Candidate Starts for Renaud18_28:

(Start: 26 @26074 has 118 MA's), (44, 26149),

Gene: Rialto_30 Start: 26518, Stop: 26655, Start Num: 26

Candidate Starts for Rialto_30:

(Start: 26 @26518 has 118 MA's), (45, 26599),

Gene: Rita_28 Start: 25888, Stop: 26028, Start Num: 26

Candidate Starts for Rita_28:

(Start: 26 @25888 has 118 MA's), (44, 25963),

Gene: RitaG_28 Start: 26097, Stop: 26231, Start Num: 26

Candidate Starts for RitaG_28:

(Start: 26 @26097 has 118 MA's), (44, 26166),

Gene: Rockne_28 Start: 25862, Stop: 26002, Start Num: 26

Candidate Starts for Rockne_28:

(Start: 26 @25862 has 118 MA's), (44, 25937),

Gene: RockyHorror_29 Start: 25730, Stop: 25897, Start Num: 22

Candidate Starts for RockyHorror_29:

(Start: 22 @25730 has 79 MA's), (Start: 27 @25760 has 12 MA's), (44, 25832),

Gene: Royals2015_28 Start: 25953, Stop: 26120, Start Num: 22

Candidate Starts for Royals2015_28:

(Start: 22 @25953 has 79 MA's), (Start: 27 @25983 has 12 MA's), (44, 26055),

Gene: Rubeelu_25 Start: 21584, Stop: 21754, Start Num: 21

Candidate Starts for Rubeelu_25:

(5, 21341), (Start: 20 @21581 has 82 MA's), (Start: 21 @21584 has 32 MA's), (Start: 24 @21599 has 1 MA's), (40, 21671),

Gene: Ruby_28 Start: 25857, Stop: 25991, Start Num: 26

Candidate Starts for Ruby_28:

(Start: 26 @25857 has 118 MA's), (44, 25926),

Gene: SG4_28 Start: 26181, Stop: 26348, Start Num: 22

Candidate Starts for SG4_28:

(Start: 22 @26181 has 79 MA's), (Start: 27 @26211 has 12 MA's), (44, 26283),

Gene: Saal_28 Start: 25869, Stop: 26003, Start Num: 26

Candidate Starts for Saal_28:

(Start: 26 @25869 has 118 MA's), (44, 25938),

Gene: Sabbb_29 Start: 26215, Stop: 26349, Start Num: 26

Candidate Starts for Sabbb_29:

(Start: 26 @26215 has 118 MA's), (44, 26284),

Gene: Sandalphon_29 Start: 26600, Stop: 26734, Start Num: 26

Candidate Starts for Sandalphon_29:

(Start: 26 @26600 has 118 MA's), (44, 26669),

Gene: Sarma624_23 Start: 21863, Stop: 22039, Start Num: 20

Candidate Starts for Sarma624_23:

(6, 21647), (Start: 20 @21863 has 82 MA's), (38, 21953), (42, 21965), (46, 21995),

Gene: Sassafras_28 Start: 26013, Stop: 26147, Start Num: 26

Candidate Starts for Sassafras_28:

(Start: 26 @26013 has 118 MA's), (44, 26082),

Gene: SassyB_28 Start: 26073, Stop: 26240, Start Num: 22

Candidate Starts for SassyB_28:

(Start: 22 @26073 has 79 MA's), (Start: 27 @26103 has 12 MA's), (44, 26175),

Gene: Sbash_24 Start: 23052, Stop: 23234, Start Num: 20

Candidate Starts for Sbash_24:

(2, 22725), (Start: 20 @23052 has 82 MA's), (Start: 21 @23055 has 32 MA's), (Start: 24 @23079 has 1 MA's), (38, 23145), (45, 23175),

Gene: Schnauzer_25 Start: 22166, Stop: 22348, Start Num: 19

Candidate Starts for Schnauzer_25:

(Start: 19 @22166 has 6 MA's), (Start: 20 @22169 has 82 MA's), (37, 22253), (38, 22256),

Gene: Scitech_24 Start: 21768, Stop: 21941, Start Num: 20

Candidate Starts for Scitech_24:

(Start: 20 @21768 has 82 MA's), (Start: 21 @21771 has 32 MA's), (Start: 24 @21786 has 1 MA's), (38, 21855), (42, 21867), (44, 21879), (46, 21897),

Gene: Scottish_29 Start: 27190, Stop: 27330, Start Num: 26

Candidate Starts for Scottish_29:

(Start: 26 @27190 has 118 MA's), (44, 27265),

Gene: Seabastian_28 Start: 26098, Stop: 26238, Start Num: 26

Candidate Starts for Seabastian_28:

(Start: 26 @26098 has 118 MA's), (44, 26173),

Gene: Seagreen_29 Start: 25880, Stop: 26047, Start Num: 22

Candidate Starts for Seagreen_29:

(Start: 22 @25880 has 79 MA's), (Start: 27 @25910 has 12 MA's), (44, 25982),

Gene: Shauna1_25 Start: 25035, Stop: 25202, Start Num: 22

Candidate Starts for Shauna1_25:

(Start: 22 @25035 has 79 MA's), (Start: 27 @25065 has 12 MA's), (44, 25137),

Gene: ShiLan_28 Start: 26065, Stop: 26205, Start Num: 26

Candidate Starts for ShiLan_28:

(Start: 26 @26065 has 118 MA's), (44, 26140),

Gene: Shipwreck_27 Start: 24716, Stop: 24850, Start Num: 30

Candidate Starts for Shipwreck_27:

(Start: 30 @24716 has 5 MA's), (35, 24749), (38, 24764), (39, 24767),

Gene: ShowerHandel_28 Start: 26066, Stop: 26206, Start Num: 26

Candidate Starts for ShowerHandel_28:

(Start: 26 @26066 has 118 MA's), (44, 26141),

Gene: ShrimpFriedEgg_24 Start: 21647, Stop: 21823, Start Num: 20

Candidate Starts for ShrimpFriedEgg_24:

(3, 21329), (6, 21431), (Start: 20 @21647 has 82 MA's), (38, 21737), (44, 21761), (46, 21779),

Gene: ShroomBoi_25 Start: 24925, Stop: 25092, Start Num: 22

Candidate Starts for ShroomBoi_25:

(Start: 22 @24925 has 79 MA's), (Start: 27 @24955 has 12 MA's), (44, 25027),

Gene: Shweta_24 Start: 21778, Stop: 21951, Start Num: 20

Candidate Starts for Shweta_24:

(Start: 20 @21778 has 82 MA's), (Start: 21 @21781 has 32 MA's), (Start: 24 @21796 has 1 MA's), (38, 21865), (42, 21877), (44, 21889), (46, 21907),

Gene: SiSi_28 Start: 25864, Stop: 26004, Start Num: 26

Candidate Starts for SiSi_28:

(Start: 26 @25864 has 118 MA's), (44, 25939),

Gene: Silvafighter_25 Start: 22166, Stop: 22348, Start Num: 19

Candidate Starts for Silvafighter_25:

(Start: 19 @22166 has 6 MA's), (Start: 20 @22169 has 82 MA's), (37, 22253), (38, 22256),

Gene: Silvy_25 Start: 22170, Stop: 22349, Start Num: 20

Candidate Starts for Silvy_25:

(Start: 19 @22167 has 6 MA's), (Start: 20 @22170 has 82 MA's), (37, 22254), (38, 22257),

Gene: SimranZ1_29 Start: 25717, Stop: 25854, Start Num: 26
Candidate Starts for SimranZ1_29:
(Start: 26 @25717 has 118 MA's), (44, 25792), (46, 25810),

Gene: SkinnyPete_24 Start: 21787, Stop: 21951, Start Num: 21
Candidate Starts for SkinnyPete_24:
(5, 21544), (Start: 20 @21784 has 82 MA's), (Start: 21 @21787 has 32 MA's), (Start: 24 @21802 has 1 MA's), (38, 21865), (46, 21907),

Gene: Smurph_25 Start: 22169, Stop: 22348, Start Num: 20
Candidate Starts for Smurph_25:
(Start: 19 @22166 has 6 MA's), (Start: 20 @22169 has 82 MA's), (37, 22253), (38, 22256),

Gene: Snekmaggedon_24 Start: 21647, Stop: 21823, Start Num: 20
Candidate Starts for Snekmaggedon_24:
(6, 21431), (Start: 20 @21647 has 82 MA's), (38, 21737), (44, 21761), (46, 21779),

Gene: Sonah_25 Start: 22869, Stop: 23039, Start Num: 21
Candidate Starts for Sonah_25:
(18, 22857), (Start: 20 @22866 has 82 MA's), (Start: 21 @22869 has 32 MA's), (Start: 24 @22884 has 1 MA's),

Gene: Soul22_32 Start: 25415, Stop: 25555, Start Num: 26
Candidate Starts for Soul22_32:
(Start: 26 @25415 has 118 MA's), (44, 25490),

Gene: Sparkdehlily_28 Start: 25915, Stop: 26049, Start Num: 26
Candidate Starts for Sparkdehlily_28:
(Start: 26 @25915 has 118 MA's), (44, 25984),

Gene: Spartacus_29 Start: 26108, Stop: 26275, Start Num: 22
Candidate Starts for Spartacus_29:
(Start: 22 @26108 has 79 MA's), (Start: 27 @26138 has 12 MA's), (44, 26210),

Gene: Spikelee_29 Start: 25856, Stop: 26023, Start Num: 22
Candidate Starts for Spikelee_29:
(Start: 22 @25856 has 79 MA's), (Start: 27 @25886 has 12 MA's), (44, 25958),

Gene: SpongeBob_24 Start: 21647, Stop: 21823, Start Num: 20
Candidate Starts for SpongeBob_24:
(6, 21431), (Start: 20 @21647 has 82 MA's), (38, 21737), (44, 21761), (46, 21779),

Gene: Spoonbill_28 Start: 26079, Stop: 26213, Start Num: 26
Candidate Starts for Spoonbill_28:
(Start: 26 @26079 has 118 MA's), (44, 26148),

Gene: Squint_41 Start: 35179, Stop: 35340, Start Num: 20
Candidate Starts for Squint_41:
(Start: 20 @35179 has 82 MA's), (38, 35254), (44, 35278), (46, 35296),

Gene: Squirty_23 Start: 21695, Stop: 21868, Start Num: 20
Candidate Starts for Squirty_23:

(3, 21377), (6, 21479), (Start: 20 @21695 has 82 MA's), (37, 21779), (38, 21782), (42, 21794),

Gene: StAnnes_25 Start: 25400, Stop: 25573, Start Num: 20

Candidate Starts for StAnnes_25:

(6, 25196), (17, 25376), (Start: 20 @25400 has 82 MA's), (44, 25511), (46, 25529),

Gene: Stap_29 Start: 26038, Stop: 26178, Start Num: 26

Candidate Starts for Stap_29:

(Start: 26 @26038 has 118 MA's), (44, 26113),

Gene: Starcevich_31 Start: 26193, Stop: 26324, Start Num: 27

Candidate Starts for Starcevich_31:

(7, 25968), (10, 26025), (13, 26043), (Start: 27 @26193 has 12 MA's), (36, 26226), (41, 26247), (42, 26250), (43, 26253), (46, 26280),

Gene: StevieRay_25 Start: 22870, Stop: 23028, Start Num: 21

Candidate Starts for StevieRay_25:

(18, 22858), (Start: 20 @22867 has 82 MA's), (Start: 21 @22870 has 32 MA's), (Start: 24 @22885 has 1 MA's),

Gene: StressBall_25 Start: 23141, Stop: 23314, Start Num: 20

Candidate Starts for StressBall_25:

(Start: 20 @23141 has 82 MA's), (Start: 21 @23144 has 32 MA's), (Start: 24 @23159 has 1 MA's),

Gene: Strokeseat_28 Start: 26130, Stop: 26282, Start Num: 22

Candidate Starts for Strokeseat_28:

(Start: 22 @26130 has 79 MA's), (Start: 27 @26145 has 12 MA's), (44, 26217),

Gene: SuperGrey_28 Start: 26610, Stop: 26750, Start Num: 26

Candidate Starts for SuperGrey_28:

(Start: 26 @26610 has 118 MA's), (44, 26685),

Gene: Superphikiman_42 Start: 35242, Stop: 35403, Start Num: 20

Candidate Starts for Superphikiman_42:

(Start: 20 @35242 has 82 MA's), (38, 35317), (44, 35341), (46, 35359),

Gene: SwagPigglett_28 Start: 25877, Stop: 26017, Start Num: 26

Candidate Starts for SwagPigglett_28:

(Start: 26 @25877 has 118 MA's), (44, 25952),

Gene: TChen_27 Start: 26165, Stop: 26302, Start Num: 27

Candidate Starts for TChen_27:

(Start: 27 @26165 has 12 MA's), (44, 26237),

Gene: TDanisky_28 Start: 25915, Stop: 26049, Start Num: 26

Candidate Starts for TDanisky_28:

(Start: 26 @25915 has 118 MA's), (44, 25984),

Gene: Taj_28 Start: 26060, Stop: 26227, Start Num: 22

Candidate Starts for Taj_28:

(Start: 22 @26060 has 79 MA's), (Start: 27 @26090 has 12 MA's), (44, 26162),

Gene: Tapioca_25 Start: 22169, Stop: 22348, Start Num: 20

Candidate Starts for Tapioca_25:

(Start: 19 @22166 has 6 MA's), (Start: 20 @22169 has 82 MA's), (37, 22253), (38, 22256),

Gene: Techage_25 Start: 22870, Stop: 23040, Start Num: 21

Candidate Starts for Techage_25:

(Start: 20 @22867 has 82 MA's), (Start: 21 @22870 has 32 MA's), (Start: 24 @22885 has 1 MA's), (38, 22954), (41, 22963),

Gene: Thespis_25 Start: 22876, Stop: 23049, Start Num: 20

Candidate Starts for Thespis_25:

(18, 22867), (Start: 20 @22876 has 82 MA's), (Start: 21 @22879 has 32 MA's), (Start: 24 @22894 has 1 MA's),

Gene: ThetaBob_27 Start: 25254, Stop: 25394, Start Num: 26

Candidate Starts for ThetaBob_27:

(Start: 26 @25254 has 118 MA's), (44, 25329),

Gene: ThulaThula_25 Start: 23442, Stop: 23621, Start Num: 21

Candidate Starts for ThulaThula_25:

(Start: 20 @23439 has 82 MA's), (Start: 21 @23442 has 32 MA's), (Start: 24 @23466 has 1 MA's), (31, 23493), (40, 23538),

Gene: TootsiePop_29 Start: 25746, Stop: 25898, Start Num: 22

Candidate Starts for TootsiePop_29:

(Start: 22 @25746 has 79 MA's), (Start: 27 @25761 has 12 MA's), (44, 25833),

Gene: Tootsieroll_29 Start: 25869, Stop: 26021, Start Num: 22

Candidate Starts for Tootsieroll_29:

(Start: 22 @25869 has 79 MA's), (Start: 27 @25884 has 12 MA's), (44, 25956),

Gene: Tortellini_25 Start: 23480, Stop: 23647, Start Num: 20

Candidate Starts for Tortellini_25:

(Start: 20 @23480 has 82 MA's), (Start: 21 @23483 has 32 MA's), (Start: 24 @23498 has 1 MA's), (38, 23561), (44, 23585), (46, 23603),

Gene: Totinger_29 Start: 25797, Stop: 25931, Start Num: 26

Candidate Starts for Totinger_29:

(Start: 26 @25797 has 118 MA's), (44, 25866),

Gene: Tweety_28 Start: 26076, Stop: 26228, Start Num: 22

Candidate Starts for Tweety_28:

(Start: 22 @26076 has 79 MA's), (Start: 27 @26091 has 12 MA's), (44, 26163),

Gene: UncleRicky_31 Start: 27195, Stop: 27335, Start Num: 26

Candidate Starts for UncleRicky_31:

(Start: 26 @27195 has 118 MA's), (44, 27270),

Gene: VRedHorse_28 Start: 26083, Stop: 26235, Start Num: 22

Candidate Starts for VRedHorse_28:

(Start: 22 @26083 has 79 MA's), (Start: 27 @26098 has 12 MA's), (44, 26170),

Gene: Velveteen_23 Start: 21863, Stop: 22039, Start Num: 20

Candidate Starts for Velveteen_23:

(6, 21647), (Start: 20 @21863 has 82 MA's), (38, 21953), (42, 21965), (46, 21995),

Gene: Venti_25 Start: 22879, Stop: 23049, Start Num: 21

Candidate Starts for Venti_25:

(18, 22867), (Start: 20 @22876 has 82 MA's), (Start: 21 @22879 has 32 MA's), (Start: 24 @22894 has 1 MA's),

Gene: Veteran_28 Start: 25894, Stop: 26034, Start Num: 26

Candidate Starts for Veteran_28:

(Start: 26 @25894 has 118 MA's), (44, 25969),

Gene: Vidya_25 Start: 22879, Stop: 23049, Start Num: 21

Candidate Starts for Vidya_25:

(18, 22867), (Start: 20 @22876 has 82 MA's), (Start: 21 @22879 has 32 MA's), (Start: 24 @22894 has 1 MA's),

Gene: Wachhund_28 Start: 26049, Stop: 26189, Start Num: 26

Candidate Starts for Wachhund_28:

(Start: 26 @26049 has 118 MA's), (44, 26124),

Gene: Wee_29 Start: 26598, Stop: 26765, Start Num: 22

Candidate Starts for Wee_29:

(Start: 22 @26598 has 79 MA's), (Start: 27 @26628 has 12 MA's), (44, 26700),

Gene: Whatsapiecost_28 Start: 26075, Stop: 26215, Start Num: 26

Candidate Starts for Whatsapiecost_28:

(Start: 26 @26075 has 118 MA's), (44, 26150),

Gene: Whouxphf_28 Start: 26134, Stop: 26274, Start Num: 26

Candidate Starts for Whouxphf_28:

(Start: 26 @26134 has 118 MA's), (44, 26209),

Gene: WillSterrel_29 Start: 27241, Stop: 27408, Start Num: 22

Candidate Starts for WillSterrel_29:

(Start: 22 @27241 has 79 MA's), (Start: 27 @27271 has 12 MA's), (44, 27343),

Gene: Willsammy_25 Start: 23145, Stop: 23318, Start Num: 20

Candidate Starts for Willsammy_25:

(Start: 20 @23145 has 82 MA's), (Start: 21 @23148 has 32 MA's), (Start: 24 @23163 has 1 MA's), (38, 23232), (46, 23274),

Gene: XFactor_28 Start: 26030, Stop: 26182, Start Num: 22

Candidate Starts for XFactor_28:

(Start: 22 @26030 has 79 MA's), (Start: 27 @26045 has 12 MA's), (44, 26117),

Gene: Xavia_25 Start: 23502, Stop: 23672, Start Num: 21

Candidate Starts for Xavia_25:

(Start: 20 @23499 has 82 MA's), (Start: 21 @23502 has 32 MA's), (Start: 24 @23517 has 1 MA's), (38, 23586), (39, 23589), (41, 23595),

Gene: Xeno_24 Start: 21783, Stop: 21953, Start Num: 21

Candidate Starts for Xeno_24:

(Start: 20 @21780 has 82 MA's), (Start: 21 @21783 has 32 MA's), (Start: 24 @21798 has 1 MA's),
(38, 21867), (41, 21876),

Gene: Xerxes_25 Start: 22166, Stop: 22345, Start Num: 20

Candidate Starts for Xerxes_25:

(Start: 19 @22163 has 6 MA's), (Start: 20 @22166 has 82 MA's), (37, 22250), (38, 22253),

Gene: Xula_23 Start: 22578, Stop: 22754, Start Num: 20

Candidate Starts for Xula_23:

(6, 22362), (Start: 20 @22578 has 82 MA's), (37, 22665),

Gene: Yorick_28 Start: 26064, Stop: 26204, Start Num: 26

Candidate Starts for Yorick_28:

(Start: 26 @26064 has 118 MA's), (44, 26139),

Gene: Zapner_34 Start: 26243, Stop: 26380, Start Num: 27

Candidate Starts for Zapner_34:

(11, 26087), (Start: 27 @26243 has 12 MA's), (44, 26315),

Gene: Zerg_28 Start: 25839, Stop: 26006, Start Num: 22

Candidate Starts for Zerg_28:

(Start: 22 @25839 has 79 MA's), (Start: 27 @25869 has 12 MA's), (44, 25941),

Gene: Zilizebeth_25 Start: 22876, Stop: 23049, Start Num: 20

Candidate Starts for Zilizebeth_25:

(18, 22867), (Start: 20 @22876 has 82 MA's), (Start: 21 @22879 has 32 MA's), (Start: 24 @22894 has
1 MA's),

Gene: Zizzle_28 Start: 26008, Stop: 26148, Start Num: 26

Candidate Starts for Zizzle_28:

(Start: 26 @26008 has 118 MA's), (44, 26083),