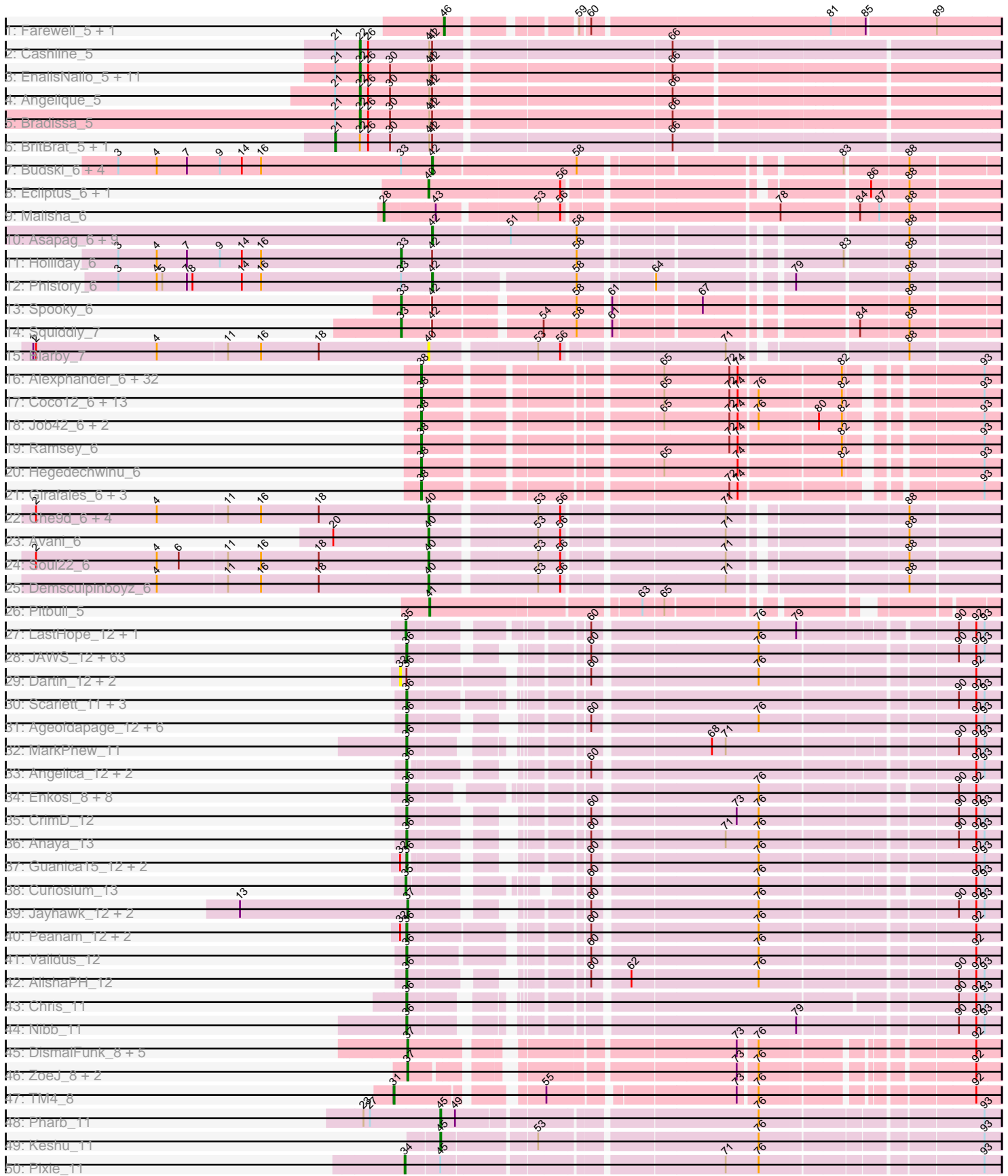
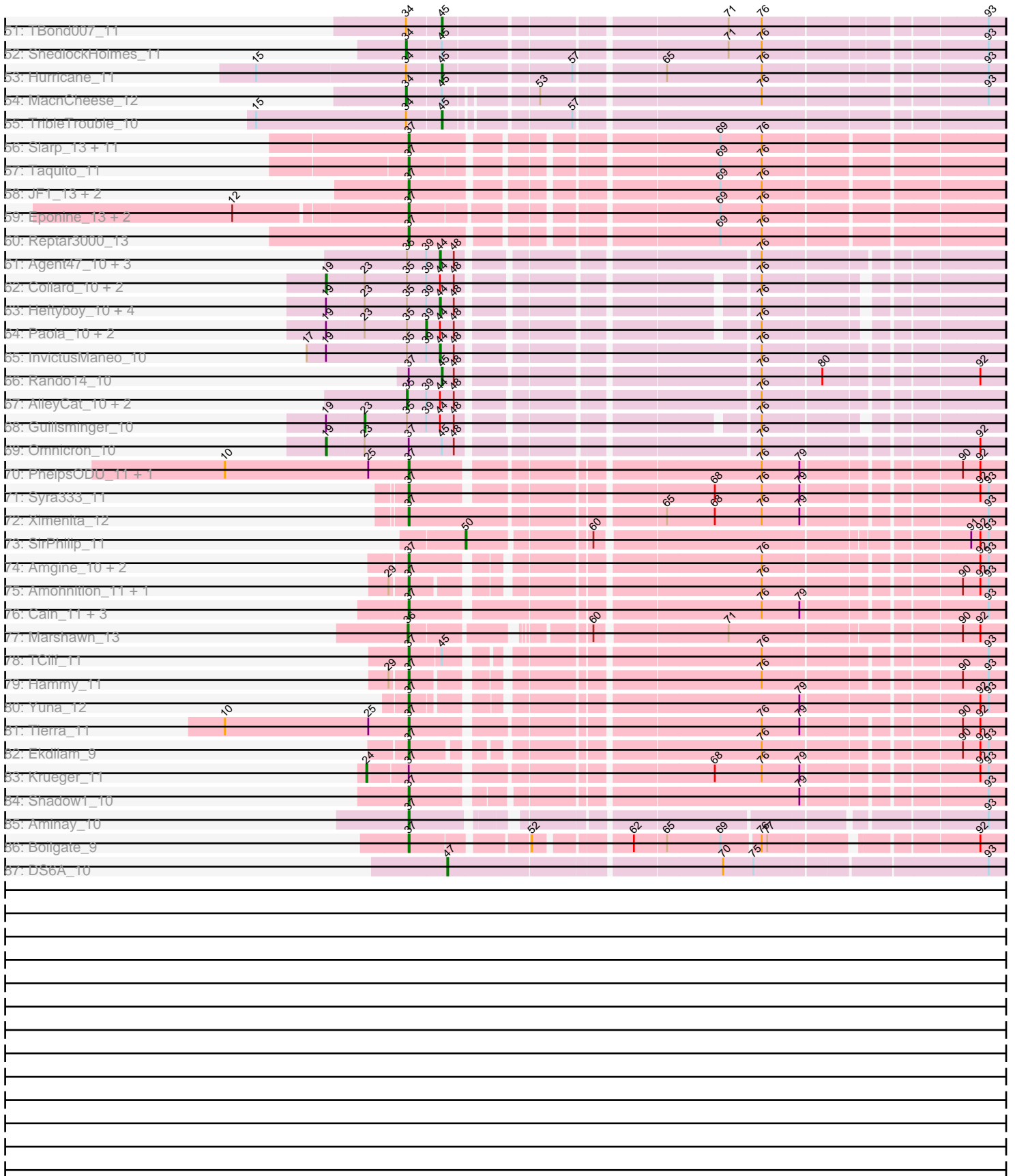


Pham 196236



Pham 196236



Note: Tracks are now grouped by subcluster and scaled. Switching in subcluster is indicated by changes in track color. Track scale is now set by default to display the region 30 bp upstream of start 1 to 30 bp downstream of the last possible start. If this default region is judged to be packed too tightly with annotated starts, the track will be further scaled to only show that region of the ORF with annotated starts. This action will be indicated by adding "Zoomed" to the title. For starts, yellow indicates the location of called starts comprised solely of Glimmer/GeneMark auto-annotations, green indicates the location of called starts with at least 1 manual gene annotation.

Pham 196236 Report

This analysis was run 12/09/24 on database version 580.

Pham number 196236 has 301 members, 12 are drafts.

Phages represented in each track:

- Track 1 : Farewell_5, Sparky_5
- Track 2 : Cashline_5
- Track 3 : EnalisNailo_5, Jablanski_5, Posh_5, Confidence_5, BeeGee_5, EMSquaredA_5, Wrigley_5, Floral_5, Pytheas_5, Lilas_5, LonelyBoi_5, Marteena_5
- Track 4 : Angeliq_5
- Track 5 : Bradissa_5
- Track 6 : BritBrat_5, Pollux_5
- Track 7 : Budski_6, CheeseTouch_6, LitninMcQueen_6, Kamaru_6, Phabuloso_6
- Track 8 : Ecliptus_6, ODay_6
- Track 9 : Malisha_6
- Track 10 : Asapag_6, Lutum_6, BENtherdunthat_6, Getalong_6, Leroy_6, Horus_6, Kenna_6, Periwinkle_6, Whitney_6, Frickyeah_6
- Track 11 : Holliday_6
- Track 12 : Phistory_6
- Track 13 : Spooky_6
- Track 14 : Squiddly_7
- Track 15 : Blarby_7
- Track 16 : Alexphander_6, Leozinho_6, SimranZ1_6, Frankie_6, Juice456_6, Beakin_6, BigPhil_6, Bobi_6, Kingsley_6, Drago_6, RockyHorror_6, Seagreen_6, Boomer_6, Enby_6, BuzzLyseyear_6, JalFarm20_6, Flathead_6, MulchExplorer_6, DirtMcgirt_6, Stap_6, OwlsT2W_6, Plumbus_6, Cerasum_6, LittleShirley_6, Sarma624_6, Oksu_6, DosHalletts_6, UncleRicky_6, Kimberlium_6, Squirty_6, Lorde_6, Velveteen_6, Tootsieroll_6
- Track 17 : Coco12_6, TootsiePop_6, Rialto_6, Starcevich_6, ChickenDinner_6, Piper2020_6, DocMcStuffins_6, Mova_6, Pollywog_6, DaWorst_6, Awesomesauce_6, Misha28_6, Spikelee_6, Totinger_6
- Track 18 : Job42_6, Marker_6, Madiba_6
- Track 19 : Ramsey_6
- Track 20 : Hegedechwinu_6
- Track 21 : Girafales_6, Mozy_6, Cornucopia_6, Quico_6
- Track 22 : Che9d_6, Yoshi_6, Zapner_7, Jabbawokkie_7, Ogopogo_7
- Track 23 : Avani_6
- Track 24 : Soul22_6
- Track 25 : Demsculpinboyz_6
- Track 26 : Pitbull_5
- Track 27 : LastHope_12, TingHuaYa_12

- Track 28 : JAWS_12, Tiri_12, Capricorn_12, CheetoDust_12, SamuelLPlaqson_12, Atiba_12, Blizzard_12, Adonis_12, Lunahalos_12, Dalmuri_12, BEEST_12, Belladonna_12, Adephegia_12, Emerson_12, Tachez_12, HedwigODU_12, Homura_12, YoureAdopted_11, Spock_12, Twitch_12, MeaningOfLife_12, TaiwanKao_12, ShiaSurprise_12, Ganymede_12, Beezoo_12, Durfee_12, Llorens_12, TreyKay_12, Rosmarinus_12, Prithvi_12, CaseJules_12, Peel_12, Jarvi_12, TruffulaTree_12, Mynx_12, Asayake_12, Megsy_12, BGlluviae_12, CREW_12, TiniBug_12, DrHayes_12, Geraldini_12, Piatt_12, Padfoot_12, BarrelRoll_12, Apocalypse_12, LindNT_12, Padpat_12, Topper_12, Hyperbowlee_12, Bella96_12, Ramen_12, Inky_12, Jeckyll_12, Zabiza_12, ActinUp_12, BaghaKamala_12, Veliki_12, Urkel_12, Zavala_12, Pokerus_11, QuincyRose_11, Boiiii_12, Joy99_12
- Track 29 : Dartin_12, Richo_12, McMater_12
- Track 30 : Scarlett_11, LeMond_11, KiSi_11, Oscar_11
- Track 31 : Ageofdapage_12, Murucutumbu_12, Dole_12, Devera_12, Illumine_12, LaterM_12, Stinson_12
- Track 32 : MarkPheW_11
- Track 33 : Angelica_12, Sulley_12, Deby_12
- Track 34 : Enkosi_8, Torres_8, Mdavu_8, Nutello_8, Amelie_8, Nikao_8, SgtBeansprout_8, LilPharaoh_8, Biglebops_8
- Track 35 : CrimD_12
- Track 36 : Anaya_13
- Track 37 : Guanica15_12, Efra2_12, Yunkel11_12
- Track 38 : Curiosium_13
- Track 39 : Jayhawk_12, Rapunzel97_12, Slimphazie_12
- Track 40 : Peanam_12, Shaobing_12, Niklas_12
- Track 41 : Validus_12
- Track 42 : AlishaPH_12
- Track 43 : Chris_11
- Track 44 : Nibb_11
- Track 45 : DismalFunk_8, Findley_8, DismalStressor_8, Milly_8, Marcoliusprime_8, Strobilo_8
- Track 46 : ZoeJ_8, Mufasa_8, BoostSeason_8
- Track 47 : TM4_8
- Track 48 : Pharb_11
- Track 49 : Keshu_11
- Track 50 : Pixie_11
- Track 51 : TBond007_11
- Track 52 : ShedlockHolmes_11
- Track 53 : Hurricane_11
- Track 54 : MacnCheese_12
- Track 55 : TribbleTrouble_10
- Track 56 : Slarp_13, Wintermute_13, OmniCritical_13, Cheetobro_13, Mitti_13, MissDaisy_13, Chancellor_13, Kraw_13, Malthus_13, SamScheppers_11, Fionnbharth_13, Patt_13
- Track 57 : Taquito_11
- Track 58 : JF1_13, Y10_13, Y2_13
- Track 59 : Eponine_13, Ruthiejr_12, Juliette_13
- Track 60 : Reptar3000_13
- Track 61 : Agent47_10, Edugator_9, Dadosky_10, Psycho_10
- Track 62 : Collard_10, Gengar_10, Leston_10
- Track 63 : Heftyboy_10, Thyatira_10, Miryou_10, SoSeph_10, Waterfoul_10
- Track 64 : Paola_10, Feyre_10, OkiRoe_10

- Track 65 : InvictusManeo_10
- Track 66 : Rando14_10
- Track 67 : AlleyCat_10, Larva_10, Kratio_9
- Track 68 : Guillsminger_10
- Track 69 : Omnicron_10
- Track 70 : PhelpsODU_11, Unicorn_11
- Track 71 : Syra333_11
- Track 72 : Ximenita_12
- Track 73 : SirPhilip_11
- Track 74 : Amgine_10, Ellie_9, Fefferhead_11
- Track 75 : Amohnition_11, DarthP_11
- Track 76 : Cain_11, Phrank_11, Bryler_11, Sunflower1121_10
- Track 77 : Marshawn_13
- Track 78 : TClif_11
- Track 79 : Hammy_11
- Track 80 : Yuna_12
- Track 81 : Tierra_11
- Track 82 : Ekdilam_9
- Track 83 : Krueger_11
- Track 84 : Shadow1_10
- Track 85 : Aminay_10
- Track 86 : Boilgate_9
- Track 87 : DS6A_10

Summary of Final Annotations (See graph section above for start numbers):

The start number called the most often in the published annotations is 36, it was called in 99 of the 289 non-draft genes in the pham.

Genes that call this "Most Annotated" start:

- ActinUp_12, Adephegia_12, Adonis_12, Ageofdapage_12, AlishaPH_12, Amelie_8, Anaya_13, Angelica_12, Apocalypse_12, Asayake_12, Atiba_12, BEEST_12, BGlluviae_12, BaghaKamala_12, BarrelRoll_12, Beezoo_12, Bella96_12, Belladonna_12, Biglebops_8, Blizzard_12, Boiiii_12, CREW_12, Capricorn_12, CaseJules_12, CheetoDust_12, Chris_11, CrimD_12, Dalmuri_12, Deby_12, Devera_12, Dole_12, DrHayes_12, Durfee_12, Efra2_12, Emerson_12, Enkosi_8, Ganymede_12, Geraldini_12, Guanica15_12, HedwigODU_12, Homura_12, Hyperbowlee_12, Illumine_12, Inky_12, JAWS_12, Jarvi_12, Jeckyll_12, Joy99_12, KiSi_11, LaterM_12, LeMond_11, LilPharaoh_8, LindNT_12, Llorens_12, Lunahalos_12, MarkPhew_11, Marshawn_13, Mdavu_8, MeaningOfLife_12, Megsy_12, Murucutumbu_12, Mynx_12, Nibb_11, Nikao_8, Niklas_12, Nutello_8, Oscar_11, Padfoot_12, Padpat_12, Peanam_12, Peel_12, Piatt_12, Pokerus_11, Prithvi_12, QuincyRose_11, Ramen_12, Rosmarinus_12, SamuelLPlaqson_12, Scarlett_11, SgtBeansprout_8, Shaobing_12, ShiaSurprise_12, Spock_12, Stinson_12, Sulley_12, Tachez_12, TaiwanKao_12, TiniBug_12, Tiri_12, Topper_12, Torres_8, TreyKay_12, TruffulaTree_12, Twitch_12, Urkel_12, Validus_12, Veliki_12, YoureAdopted_11, Yunkel11_12, Zabiza_12, Zavala_12,

Genes that have the "Most Annotated" start but do not call it:

- Dartin_12, McMater_12, Richo_12,

Genes that do not have the "Most Annotated" start:

- Agent47_10, Alexphander_6, AlleyCat_10, Amgine_10, Aminay_10, Amohnition_11, Angelique_5, Asapag_6, Avani_6, Awesomesauce_6, BENtherdunthat_6, Beakin_6, BeeGee_5, BigPhil_6, Blarby_7, Bobi_6, Boilgate_9, Boomer_6, BoostSeason_8, Bradissa_5, BritBrat_5, Bryler_11, Budski_6, BuzzLyseyear_6, Cain_11, Cashline_5, Cerasum_6, Chancellor_13, Che9d_6, CheeseTouch_6, Cheetobro_13, ChickenDinner_6, Coco12_6, Collard_10, Confidence_5, Cornucopia_6, Curiosium_13, DS6A_10, DaWorst_6, Dadosky_10, DarthP_11, Demsculpinboyz_6, DirtMcgirt_6, DismalFunk_8, DismalStressor_8, DocMcStuffins_6, DosHalletts_6, Drago_6, EMSquaredA_5, Ecliptus_6, Edugator_9, Ekdilam_9, Ellie_9, EnalisNailo_5, Enby_6, Eponine_13, Farewell_5, Fefferhead_11, Feyre_10, Findley_8, Fionnbharth_13, Flathead_6, Floral_5, Frankie_6, Frickyeah_6, Gengar_10, Getalong_6, Girafales_6, Guillsminger_10, Hammy_11, Heftyboy_10, Hegedechwinu_6, Holliday_6, Horus_6, Hurricane_11, InvictusManeo_10, JF1_13, Jabbawokkie_7, Jablanski_5, JalFarm20_6, Jayhawk_12, Job42_6, Juice456_6, Juliette_13, Kamaru_6, Kenna_6, Keshu_11, Kimberlium_6, Kingsley_6, Kratio_9, Kraw_13, Krueger_11, Larva_10, LastHope_12, Leozinho_6, Leroy_6, Leston_10, Lilas_5, LitninMcQueen_6, LittleShirley_6, LonelyBoi_5, Lorde_6, Lutum_6, MacnCheese_12, Madiba_6, Malisha_6, Malthus_13, Marcoliusprime_8, Marker_6, Marteena_5, Milly_8, Miryou_10, Misha28_6, MissDaisy_13, Mitti_13, Mova_6, Mozy_6, Mufasa_8, MulchExplorer_6, ODay_6, Ogopogo_7, OkiRoe_10, Oksu_6, OmniCritical_13, Omnicron_10, OwisT2W_6, Paola_10, Patt_13, Periwinkle_6, Phabuloso_6, Pharb_11, PhelpsODU_11, Phistory_6, Phrank_11, Piper2020_6, Pitbull_5, Pixie_11, Plumbus_6, Pollux_5, Pollywog_6, Posh_5, Psycho_10, Pytheas_5, Quico_6, Ramsey_6, Rando14_10, Rapunzel97_12, Reptar3000_13, Rialto_6, RockyHorror_6, Ruthiejr_12, SamScheppers_11, Sarma624_6, Seagreen_6, Shadow1_10, ShedlockHolmes_11, SimranZ1_6, SirPhilip_11, Slarp_13, Slimphazie_12, SoSeph_10, Soul22_6, Sparky_5, Spikelee_6, Spooky_6, Squiddly_7, Squirty_6, Stap_6, Starcevich_6, Strobilo_8, Sunflower1121_10, Syra333_11, TBond007_11, TClif_11, TM4_8, Taquito_11, Thyatira_10, Tierra_11, TingHuaYa_12, TootsiePop_6, Tootsieroll_6, Totinger_6, TripleTrouble_10, UncleRicky_6, Unicorn_11, Velveteen_6, Waterfoul_10, Whitney_6, Wintermute_13, Wrigley_5, Ximenita_12, Y10_13, Y2_13, Yoshi_6, Yuna_12, Zapner_7, ZoeJ_8,

Summary by start number:

Start 19:

- Found in 14 of 301 (4.7%) of genes in pham
- Manual Annotations of this start: 4 of 289
- Called 28.6% of time when present
- Phage (with cluster) where this start called: Collard_10 (K5), Gengar_10 (K5), Leston_10 (K5), Omnicron_10 (K5),

Start 21:

- Found in 17 of 301 (5.6%) of genes in pham
- Manual Annotations of this start: 2 of 289
- Called 11.8% of time when present
- Phage (with cluster) where this start called: BritBrat_5 (CY2), Pollux_5 (CY1),

Start 22:

- Found in 17 of 301 (5.6%) of genes in pham
- Manual Annotations of this start: 15 of 289

- Called 88.2% of time when present
- Phage (with cluster) where this start called: Angelique_5 (CY1), BeeGee_5 (CY), Bradissa_5 (CY1), Cashline_5 (CY), Confidence_5 (CY1), EMSquaredA_5 (CY1), EnalisNailo_5 (CY1), Floral_5 (CY1), Jablanski_5 (CY), Lilas_5 (CY1), LonelyBoi_5 (CY), Marteenaa_5 (CY1), Posh_5 (CY), Pytheas_5 (CY), Wrigley_5 (CY),

Start 23:

- Found in 14 of 301 (4.7%) of genes in pham
- Manual Annotations of this start: 1 of 289
- Called 7.1% of time when present
- Phage (with cluster) where this start called: Guillsminger_10 (K5),

Start 24:

- Found in 1 of 301 (0.3%) of genes in pham
- Manual Annotations of this start: 1 of 289
- Called 100.0% of time when present
- Phage (with cluster) where this start called: Krueger_11 (K6),

Start 28:

- Found in 1 of 301 (0.3%) of genes in pham
- Manual Annotations of this start: 1 of 289
- Called 100.0% of time when present
- Phage (with cluster) where this start called: Malisha_6 (DN),

Start 31:

- Found in 1 of 301 (0.3%) of genes in pham
- Manual Annotations of this start: 1 of 289
- Called 100.0% of time when present
- Phage (with cluster) where this start called: TM4_8 (K2),

Start 32:

- Found in 9 of 301 (3.0%) of genes in pham
- No Manual Annotations of this start.
- Called 33.3% of time when present
- Phage (with cluster) where this start called: Dartin_12 (K1), McMater_12 (K1), Richo_12 (K1),

Start 33:

- Found in 9 of 301 (3.0%) of genes in pham
- Manual Annotations of this start: 3 of 289
- Called 33.3% of time when present
- Phage (with cluster) where this start called: Holliday_6 (DN1), Spooky_6 (DN2), Squiddly_7 (DN2),

Start 34:

- Found in 6 of 301 (2.0%) of genes in pham
- Manual Annotations of this start: 3 of 289
- Called 50.0% of time when present
- Phage (with cluster) where this start called: MacnCheese_12 (K3), Pixie_11 (K3), ShedlockHolmes_11 (K3),

Start 35:

- Found in 23 of 301 (7.6%) of genes in pham

- Manual Annotations of this start: 5 of 289
- Called 26.1% of time when present
- Phage (with cluster) where this start called: AlleyCat_10 (K5), Curiosium_13 (K1), Kratio_9 (K5), Larva_10 (K5), LastHope_12 (K1), TingHuaYa_12 (K1),

Start 36:

- Found in 104 of 301 (34.6%) of genes in pham
- Manual Annotations of this start: 99 of 289
- Called 97.1% of time when present
- Phage (with cluster) where this start called: ActinUp_12 (K1), Adephagia_12 (K1), Adonis_12 (K1), Ageofdapage_12 (K1), AlishaPH_12 (K1), Amelie_8 (K1), Anaya_13 (K1), Angelica_12 (K1), Apocalypse_12 (K1), Asayake_12 (K1), Atiba_12 (K1), BEEST_12 (K1), BGlluviae_12 (K1), BaghaKamala_12 (K1), BarrelRoll_12 (K1), Beezoo_12 (K1), Bella96_12 (K1), Belladonna_12 (K1), Binglebops_8 (K1), Blizzard_12 (K1), Boiiii_12 (K1), CREW_12 (K1), Capricorn_12 (K1), CaseJules_12 (K1), CheetoDust_12 (K1), Chris_11 (K1), CrimD_12 (K1), Dalmuri_12 (K1), Deby_12 (K1), Devera_12 (K1), Dole_12 (K1), DrHayes_12 (K1), Durfee_12 (K1), Efra2_12 (K1), Emerson_12 (K1), Enkosi_8 (K1), Ganymede_12 (K1), Geraldini_12 (K1), Guanica15_12 (K1), HedwigODU_12 (K1), Homura_12 (K1), Hyperbowlee_12 (K1), Illumine_12 (K1), Inky_12 (K1), JAWS_12 (K1), Jarvi_12 (K1), Jeckyll_12 (K1), Joy99_12 (K1), KiSi_11 (K1), LaterM_12 (K1), LeMond_11 (K1), LilPharaoh_8 (K1), LindNT_12 (K1), Llorens_12 (K1), Lunahalos_12 (K1), MarkPhew_11 (K1), Marshawn_13 (K6), Mdavu_8 (K1), MeaningOfLife_12 (K1), Megsy_12 (K1), Murucutumbu_12 (K1), Mynx_12 (K1), Nibb_11 (K1), Nikao_8 (K1), Niklas_12 (K1), Nutello_8 (K1), Oscar_11 (K1), Padfoot_12 (K1), Padpat_12 (K1), Peanam_12 (K1), Peel_12 (K1), Piatt_12 (K1), Pokerus_11 (K1), Prithvi_12 (K1), QuincyRose_11 (K1), Ramen_12 (K1), Rosmarinus_12 (K1), SamuelLPlaqson_12 (K1), Scarlett_11 (K1), SgtBeansprout_8 (K1), Shaobing_12 (K1), ShiaSurprise_12 (K1), Spock_12 (K1), Stinson_12 (K1), Sulley_12 (K1), Tachez_12 (K1), TaiwanKao_12 (K1), TiniBug_12 (K1), Tiri_12 (K1), Topper_12 (K1), Torres_8 (K1), TreyKay_12 (K1), TruffulaTree_12 (K1), Twitch_12 (K1), Urkel_12 (K1), Validus_12 (K1), Veliki_12 (K1), YoureAdopted_11 (K1), Yunkel11_12 (K1), Zabiza_12 (K1), Zavala_12 (K1),

Start 37:

- Found in 56 of 301 (18.6%) of genes in pham
- Manual Annotations of this start: 52 of 289
- Called 94.6% of time when present
- Phage (with cluster) where this start called: Amgine_10 (K6), Aminay_10 (K7), Amohntion_11 (K6), Boilgate_9 (K8), BoostSeason_8 (K2), Bryler_11 (K6), Cain_11 (K6), Chancellor_13 (K4), Cheetobro_13 (K4), DarthP_11 (K6), DismalFunk_8 (K2), DismalStressor_8 (K2), Ekdilam_9 (K6), Ellie_9 (K6), Eponine_13 (K4), Fefferhead_11 (K6), Findley_8 (K2), Fionnbharth_13 (K4), Hammy_11 (K6), JF1_13 (K4), Jayhawk_12 (K1), Juliette_13 (K4), Kraw_13 (K4), Malthus_13 (K4), Marcoliusprime_8 (K2), Milly_8 (K2), MissDaisy_13 (K4), Mitti_13 (K4), Mufasa_8 (K2), OmniCritical_13 (K4), Patt_13 (K4), PhelpsODU_11 (K6), Phrank_11 (K6), Rapunzel97_12 (K1), Reptar3000_13 (K4), Ruthiejr_12 (K4), SamScheppers_11 (K4), Shadow1_10 (K6), Slarp_13 (K4), Slimphazie_12 (K1), Strobilo_8 (K2), Sunflower1121_10 (K6), Syra333_11 (K6), TClif_11 (K6), Taquito_11 (K4), Tierra_11 (K6), Unicorn_11 (K6), Wintermute_13 (K4), Ximenita_12 (K6), Y10_13 (K4), Y2_13 (K4), Yuna_12 (K6), ZoeJ_8 (K2),

Start 38:

- Found in 56 of 301 (18.6%) of genes in pham

- Manual Annotations of this start: 53 of 289
- Called 100.0% of time when present
- Phage (with cluster) where this start called: Alexphander_6 (F1), Awesomesauce_6 (F1), Beakin_6 (F1), BigPhil_6 (F1), Bobi_6 (F1), Boomer_6 (F1), BuzzLyseyear_6 (F1), Cerasum_6 (F1), ChickenDinner_6 (F1), Coco12_6 (F1), Cornucopia_6 (F1), DaWorst_6 (F1), DirtMcgirt_6 (F1), DocMcStuffins_6 (F1), DosHalletts_6 (F1), Drago_6 (F1), Enby_6 (F1), Flathead_6 (F1), Frankie_6 (F1), Girafales_6 (F1), Hegedechwinu_6 (F1), JalFarm20_6 (F1), Job42_6 (F1), Juice456_6 (F1), Kimberlium_6 (F1), Kingsley_6 (F1), Leozinho_6 (F1), LittleShirley_6 (F1), Lorde_6 (F1), Madiba_6 (F1), Marker_6 (F1), Misha28_6 (F1), Mova_6 (F1), Mozy_6 (F1), MulchExplorer_6 (F1), Oksu_6 (F1), OwlsT2W_6 (F1), Piper2020_6 (F1), Plumbus_6 (F1), Pollywog_6 (F1), Quico_6 (F1), Ramsey_6 (F1), Rialto_6 (F1), RockyHorror_6 (F1), Sarma624_6 (F1), Seagreen_6 (F1), SimranZ1_6 (F1), Spikelee_6 (F1), Squirty_6 (F3), Stap_6 (F1), Starcevich_6 (F1), TootsiePop_6 (F1), Tootsieroll_6 (F1), Totinger_6 (F1), UncleRicky_6 (F1), Velveteen_6 (F1),

Start 39:

- Found in 20 of 301 (6.6%) of genes in pham
- Manual Annotations of this start: 3 of 289
- Called 15.0% of time when present
- Phage (with cluster) where this start called: Feyre_10 (K5), OkiRoe_10 (K5), Paola_10 (K5),

Start 40:

- Found in 11 of 301 (3.7%) of genes in pham
- Manual Annotations of this start: 10 of 289
- Called 100.0% of time when present
- Phage (with cluster) where this start called: Avani_6 (F2), Blarby_7 (F), Che9d_6 (F2), Demsculpinboyz_6 (F2), Ecliptus_6 (DN), Jabbawokkie_7 (F2), ODay_6 (DN), Ogopogo_7 (F1), Soul22_6 (F2), Yoshi_6 (F2), Zapner_7 (F2),

Start 41:

- Found in 18 of 301 (6.0%) of genes in pham
- Manual Annotations of this start: 1 of 289
- Called 5.6% of time when present
- Phage (with cluster) where this start called: Pitbull_5 (FQ),

Start 42:

- Found in 36 of 301 (12.0%) of genes in pham
- Manual Annotations of this start: 15 of 289
- Called 44.4% of time when present
- Phage (with cluster) where this start called: Asapag_6 (DN1), BENtherdunthat_6 (DN1), Budski_6 (DN), CheeseTouch_6 (DN1), Frickyeah_6 (DN1), Getalong_6 (DN1), Horus_6 (DN1), Kamaru_6 (DN1), Kenna_6 (DN1), Leroy_6 (DN1), LitninMcQueen_6 (DN1), Lutum_6 (DN1), Periwinkle_6 (DN1), Phabuloso_6 (DN1), Phistory_6 (DN1), Whitney_6 (DN1),

Start 44:

- Found in 20 of 301 (6.6%) of genes in pham
- Manual Annotations of this start: 10 of 289
- Called 50.0% of time when present
- Phage (with cluster) where this start called: Agent47_10 (K5), Dadosky_10 (K5), Edugator_9 (K5), Heftyboy_10 (K5), InvictusManeo_10 (K5), Miryou_10 (K5),

Psycho_10 (K5), SoSeph_10 (K5), Thyatira_10 (K5), Waterfoul_10 (K5),

Start 45:

- Found in 11 of 301 (3.7%) of genes in pham
- Manual Annotations of this start: 6 of 289
- Called 54.5% of time when present
- Phage (with cluster) where this start called: Hurricane_11 (K3), Keshu_11 (K3), Pharb_11 (K3), Rando14_10 (K5), TBond007_11 (K3), TribbleTrouble_10 (K3),

Start 46:

- Found in 2 of 301 (0.7%) of genes in pham
- Manual Annotations of this start: 2 of 289
- Called 100.0% of time when present
- Phage (with cluster) where this start called: Farewell_5 (AF), Sparky_5 (AF),

Start 47:

- Found in 1 of 301 (0.3%) of genes in pham
- Manual Annotations of this start: 1 of 289
- Called 100.0% of time when present
- Phage (with cluster) where this start called: DS6A_10 (singleton),

Start 50:

- Found in 1 of 301 (0.3%) of genes in pham
- Manual Annotations of this start: 1 of 289
- Called 100.0% of time when present
- Phage (with cluster) where this start called: SirPhilip_11 (K6),

Summary by clusters:

There are 21 clusters represented in this pham: DN, F1, CY1, F3, AF, F, DN2, FQ, CY, CY2, K3, K2, K1, DN1, K6, K5, K4, F2, K7, singleton, K8,

Info for manual annotations of cluster AF:

- Start number 46 was manually annotated 2 times for cluster AF.

Info for manual annotations of cluster CY:

- Start number 22 was manually annotated 7 times for cluster CY.

Info for manual annotations of cluster CY1:

- Start number 21 was manually annotated 1 time for cluster CY1.
- Start number 22 was manually annotated 8 times for cluster CY1.

Info for manual annotations of cluster CY2:

- Start number 21 was manually annotated 1 time for cluster CY2.

Info for manual annotations of cluster DN:

- Start number 28 was manually annotated 1 time for cluster DN.
- Start number 40 was manually annotated 2 times for cluster DN.
- Start number 42 was manually annotated 1 time for cluster DN.

Info for manual annotations of cluster DN1:

- Start number 33 was manually annotated 1 time for cluster DN1.
- Start number 42 was manually annotated 14 times for cluster DN1.

Info for manual annotations of cluster DN2:

- Start number 33 was manually annotated 2 times for cluster DN2.

Info for manual annotations of cluster F1:

- Start number 38 was manually annotated 52 times for cluster F1.
- Start number 40 was manually annotated 1 time for cluster F1.

Info for manual annotations of cluster F2:

- Start number 40 was manually annotated 7 times for cluster F2.

Info for manual annotations of cluster F3:

- Start number 38 was manually annotated 1 time for cluster F3.

Info for manual annotations of cluster FQ:

- Start number 41 was manually annotated 1 time for cluster FQ.

Info for manual annotations of cluster K1:

- Start number 35 was manually annotated 2 times for cluster K1.
- Start number 36 was manually annotated 98 times for cluster K1.
- Start number 37 was manually annotated 3 times for cluster K1.

Info for manual annotations of cluster K2:

- Start number 31 was manually annotated 1 time for cluster K2.
- Start number 37 was manually annotated 9 times for cluster K2.

Info for manual annotations of cluster K3:

- Start number 34 was manually annotated 3 times for cluster K3.
- Start number 45 was manually annotated 5 times for cluster K3.

Info for manual annotations of cluster K4:

- Start number 37 was manually annotated 19 times for cluster K4.

Info for manual annotations of cluster K5:

- Start number 19 was manually annotated 4 times for cluster K5.
- Start number 23 was manually annotated 1 time for cluster K5.
- Start number 35 was manually annotated 3 times for cluster K5.
- Start number 39 was manually annotated 3 times for cluster K5.
- Start number 44 was manually annotated 10 times for cluster K5.
- Start number 45 was manually annotated 1 time for cluster K5.

Info for manual annotations of cluster K6:

- Start number 24 was manually annotated 1 time for cluster K6.
- Start number 36 was manually annotated 1 time for cluster K6.
- Start number 37 was manually annotated 19 times for cluster K6.
- Start number 50 was manually annotated 1 time for cluster K6.

Info for manual annotations of cluster K7:

- Start number 37 was manually annotated 1 time for cluster K7.

Info for manual annotations of cluster K8:

- Start number 37 was manually annotated 1 time for cluster K8.

Gene Information:

Gene: ActinUp_12 Start: 7313, Stop: 7855, Start Num: 36

Candidate Starts for ActinUp_12:

(Start: 36 @7313 has 99 MA's), (60, 7448), (76, 7616), (90, 7811), (92, 7829), (93, 7838),

Gene: Adephagia_12 Start: 7313, Stop: 7855, Start Num: 36

Candidate Starts for Adephagia_12:

(Start: 36 @7313 has 99 MA's), (60, 7448), (76, 7616), (90, 7811), (92, 7829), (93, 7838),

Gene: Adonis_12 Start: 7324, Stop: 7866, Start Num: 36

Candidate Starts for Adonis_12:

(Start: 36 @7324 has 99 MA's), (60, 7459), (76, 7627), (90, 7822), (92, 7840), (93, 7849),

Gene: Agent47_10 Start: 7496, Stop: 8026, Start Num: 44

Candidate Starts for Agent47_10:

(Start: 35 @7460 has 5 MA's), (Start: 39 @7481 has 3 MA's), (Start: 44 @7496 has 10 MA's), (48, 7508), (76, 7793),

Gene: Ageofdapage_12 Start: 7253, Stop: 7795, Start Num: 36

Candidate Starts for Ageofdapage_12:

(Start: 36 @7253 has 99 MA's), (60, 7388), (76, 7556), (92, 7769), (93, 7778),

Gene: Alexphander_6 Start: 4408, Stop: 4944, Start Num: 38

Candidate Starts for Alexphander_6:

(Start: 38 @4408 has 53 MA's), (65, 4630), (72, 4699), (74, 4708), (82, 4810), (93, 4927),

Gene: AlishaPH_12 Start: 7315, Stop: 7857, Start Num: 36

Candidate Starts for AlishaPH_12:

(Start: 36 @7315 has 99 MA's), (60, 7450), (62, 7483), (76, 7618), (90, 7813), (92, 7831), (93, 7840),

Gene: AlleyCat_10 Start: 7355, Stop: 7921, Start Num: 35

Candidate Starts for AlleyCat_10:

(Start: 35 @7355 has 5 MA's), (Start: 39 @7376 has 3 MA's), (Start: 44 @7391 has 10 MA's), (48, 7403), (76, 7688),

Gene: Amelie_8 Start: 6589, Stop: 7137, Start Num: 36

Candidate Starts for Amelie_8:

(Start: 36 @6589 has 99 MA's), (76, 6904), (90, 7093), (92, 7111),

Gene: Amgine_10 Start: 6944, Stop: 7507, Start Num: 37

Candidate Starts for Amgine_10:

(Start: 37 @6944 has 52 MA's), (76, 7274), (92, 7481), (93, 7490),

Gene: Aminay_10 Start: 7229, Stop: 7786, Start Num: 37

Candidate Starts for Aminay_10:

(Start: 37 @7229 has 52 MA's), (93, 7769),

Gene: Amohnition_11 Start: 7198, Stop: 7755, Start Num: 37

Candidate Starts for Amohnition_11:

(29, 7180), (Start: 37 @7198 has 52 MA's), (76, 7522), (90, 7711), (92, 7729), (93, 7738),

Gene: Anaya_13 Start: 7316, Stop: 7855, Start Num: 36

Candidate Starts for Anaya_13:

(Start: 36 @7316 has 99 MA's), (60, 7451), (71, 7583), (76, 7619), (90, 7811), (92, 7829), (93, 7838),

Gene: Angelica_12 Start: 7293, Stop: 7826, Start Num: 36

Candidate Starts for Angelica_12:

(Start: 36 @7293 has 99 MA's), (60, 7422), (92, 7800), (93, 7809),

Gene: Angelique_5 Start: 4595, Stop: 5251, Start Num: 22

Candidate Starts for Angelique_5:

(Start: 21 @4568 has 2 MA's), (Start: 22 @4595 has 15 MA's), (26, 4604), (30, 4628), (Start: 41 @4670 has 1 MA's), (Start: 42 @4673 has 15 MA's), (66, 4919),

Gene: Apocalypse_12 Start: 7291, Stop: 7833, Start Num: 36

Candidate Starts for Apocalypse_12:

(Start: 36 @7291 has 99 MA's), (60, 7426), (76, 7594), (90, 7789), (92, 7807), (93, 7816),

Gene: Asapag_6 Start: 4327, Stop: 4878, Start Num: 42

Candidate Starts for Asapag_6:

(Start: 42 @4327 has 15 MA's), (51, 4408), (58, 4480), (88, 4786),

Gene: Asayake_12 Start: 7357, Stop: 7899, Start Num: 36

Candidate Starts for Asayake_12:

(Start: 36 @7357 has 99 MA's), (60, 7492), (76, 7660), (90, 7855), (92, 7873), (93, 7882),

Gene: Atiba_12 Start: 7279, Stop: 7821, Start Num: 36

Candidate Starts for Atiba_12:

(Start: 36 @7279 has 99 MA's), (60, 7414), (76, 7582), (90, 7777), (92, 7795), (93, 7804),

Gene: Avani_6 Start: 4307, Stop: 4855, Start Num: 40

Candidate Starts for Avani_6:

(20, 4205), (Start: 40 @4307 has 10 MA's), (53, 4412), (56, 4436), (71, 4595), (88, 4760),

Gene: Awesomesauce_6 Start: 4411, Stop: 4947, Start Num: 38

Candidate Starts for Awesomesauce_6:

(Start: 38 @4411 has 53 MA's), (65, 4633), (72, 4702), (74, 4711), (76, 4729), (82, 4813), (93, 4930),

Gene: BEEST_12 Start: 7357, Stop: 7899, Start Num: 36

Candidate Starts for BEEST_12:

(Start: 36 @7357 has 99 MA's), (60, 7492), (76, 7660), (90, 7855), (92, 7873), (93, 7882),

Gene: BENtherdunthat_6 Start: 4327, Stop: 4878, Start Num: 42

Candidate Starts for BENtherdunthat_6:

(Start: 42 @4327 has 15 MA's), (51, 4408), (58, 4480), (88, 4786),

Gene: BGlluviae_12 Start: 7357, Stop: 7899, Start Num: 36

Candidate Starts for BGlluviae_12:

(Start: 36 @7357 has 99 MA's), (60, 7492), (76, 7660), (90, 7855), (92, 7873), (93, 7882),

Gene: BaghaKamala_12 Start: 7289, Stop: 7825, Start Num: 36

Candidate Starts for BaghaKamala_12:

(Start: 36 @7289 has 99 MA's), (60, 7418), (76, 7586), (90, 7781), (92, 7799), (93, 7808),

Gene: BarrelRoll_12 Start: 7307, Stop: 7849, Start Num: 36

Candidate Starts for BarrelRoll_12:

(Start: 36 @7307 has 99 MA's), (60, 7442), (76, 7610), (90, 7805), (92, 7823), (93, 7832),

Gene: Beakin_6 Start: 4411, Stop: 4947, Start Num: 38

Candidate Starts for Beakin_6:

(Start: 38 @4411 has 53 MA's), (65, 4633), (72, 4702), (74, 4711), (82, 4813), (93, 4930),

Gene: BeeGee_5 Start: 4598, Stop: 5254, Start Num: 22

Candidate Starts for BeeGee_5:

(Start: 21 @4571 has 2 MA's), (Start: 22 @4598 has 15 MA's), (26, 4607), (30, 4631), (Start: 41 @4673 has 1 MA's), (Start: 42 @4676 has 15 MA's), (66, 4922),

Gene: Beezoo_12 Start: 7339, Stop: 7875, Start Num: 36

Candidate Starts for Beezoo_12:

(Start: 36 @7339 has 99 MA's), (60, 7468), (76, 7636), (90, 7831), (92, 7849), (93, 7858),

Gene: Bella96_12 Start: 7242, Stop: 7784, Start Num: 36

Candidate Starts for Bella96_12:

(Start: 36 @7242 has 99 MA's), (60, 7377), (76, 7545), (90, 7740), (92, 7758), (93, 7767),

Gene: Belladonna_12 Start: 7357, Stop: 7899, Start Num: 36

Candidate Starts for Belladonna_12:

(Start: 36 @7357 has 99 MA's), (60, 7492), (76, 7660), (90, 7855), (92, 7873), (93, 7882),

Gene: BigPhil_6 Start: 4408, Stop: 4944, Start Num: 38

Candidate Starts for BigPhil_6:

(Start: 38 @4408 has 53 MA's), (65, 4630), (72, 4699), (74, 4708), (82, 4810), (93, 4927),

Gene: Biglebops_8 Start: 6589, Stop: 7137, Start Num: 36

Candidate Starts for Biglebops_8:

(Start: 36 @6589 has 99 MA's), (76, 6904), (90, 7093), (92, 7111),

Gene: Blarby_7 Start: 4831, Stop: 5379, Start Num: 40

Candidate Starts for Blarby_7:

(1, 4405), (2, 4408), (4, 4540), (11, 4615), (16, 4651), (18, 4714), (Start: 40 @4831 has 10 MA's), (53, 4936), (56, 4960), (71, 5119), (88, 5284),

Gene: Blizzard_12 Start: 7357, Stop: 7899, Start Num: 36

Candidate Starts for Blizzard_12:

(Start: 36 @7357 has 99 MA's), (60, 7492), (76, 7660), (90, 7855), (92, 7873), (93, 7882),

Gene: Bobi_6 Start: 4408, Stop: 4944, Start Num: 38

Candidate Starts for Bobi_6:

(Start: 38 @4408 has 53 MA's), (65, 4630), (72, 4699), (74, 4708), (82, 4810), (93, 4927),

Gene: Boiiii_12 Start: 7357, Stop: 7899, Start Num: 36

Candidate Starts for Boiiii_12:

(Start: 36 @7357 has 99 MA's), (60, 7492), (76, 7660), (90, 7855), (92, 7873), (93, 7882),

Gene: Boilgate_9 Start: 7303, Stop: 7857, Start Num: 37

Candidate Starts for Boilgate_9:

(Start: 37 @7303 has 52 MA's), (52, 7414), (62, 7501), (65, 7534), (69, 7591), (76, 7630), (77, 7636), (92, 7831),

Gene: Boomer_6 Start: 4408, Stop: 4944, Start Num: 38

Candidate Starts for Boomer_6:

(Start: 38 @4408 has 53 MA's), (65, 4630), (72, 4699), (74, 4708), (82, 4810), (93, 4927),

Gene: BoostSeason_8 Start: 5333, Stop: 5878, Start Num: 37

Candidate Starts for BoostSeason_8:

(Start: 37 @5333 has 52 MA's), (73, 5636), (76, 5654), (92, 5852),

Gene: Bradissa_5 Start: 4602, Stop: 5258, Start Num: 22

Candidate Starts for Bradissa_5:

(Start: 21 @4575 has 2 MA's), (Start: 22 @4602 has 15 MA's), (26, 4611), (30, 4635), (Start: 41 @4677 has 1 MA's), (Start: 42 @4680 has 15 MA's), (66, 4926),

Gene: BritBrat_5 Start: 4577, Stop: 5260, Start Num: 21

Candidate Starts for BritBrat_5:

(Start: 21 @4577 has 2 MA's), (Start: 22 @4604 has 15 MA's), (26, 4613), (30, 4637), (Start: 41 @4679 has 1 MA's), (Start: 42 @4682 has 15 MA's), (66, 4928),

Gene: Bryler_11 Start: 6246, Stop: 6824, Start Num: 37

Candidate Starts for Bryler_11:

(Start: 37 @6246 has 52 MA's), (76, 6591), (79, 6630), (93, 6807),

Gene: Budski_6 Start: 4327, Stop: 4875, Start Num: 42

Candidate Starts for Budski_6:

(3, 3985), (4, 4027), (7, 4060), (9, 4096), (14, 4120), (16, 4141), (Start: 33 @4294 has 3 MA's), (Start: 42 @4327 has 15 MA's), (58, 4480), (83, 4723), (88, 4786),

Gene: BuzzLyseyear_6 Start: 4407, Stop: 4943, Start Num: 38

Candidate Starts for BuzzLyseyear_6:

(Start: 38 @4407 has 53 MA's), (65, 4629), (72, 4698), (74, 4707), (82, 4809), (93, 4926),

Gene: CREW_12 Start: 7357, Stop: 7899, Start Num: 36

Candidate Starts for CREW_12:

(Start: 36 @7357 has 99 MA's), (60, 7492), (76, 7660), (90, 7855), (92, 7873), (93, 7882),

Gene: Cain_11 Start: 6234, Stop: 6812, Start Num: 37

Candidate Starts for Cain_11:

(Start: 37 @6234 has 52 MA's), (76, 6579), (79, 6618), (93, 6795),

Gene: Capricorn_12 Start: 7357, Stop: 7899, Start Num: 36

Candidate Starts for Capricorn_12:

(Start: 36 @7357 has 99 MA's), (60, 7492), (76, 7660), (90, 7855), (92, 7873), (93, 7882),

Gene: CaseJules_12 Start: 7357, Stop: 7899, Start Num: 36

Candidate Starts for CaseJules_12:

(Start: 36 @7357 has 99 MA's), (60, 7492), (76, 7660), (90, 7855), (92, 7873), (93, 7882),

Gene: Cashline_5 Start: 4451, Stop: 5107, Start Num: 22

Candidate Starts for Cashline_5:

(Start: 21 @4424 has 2 MA's), (Start: 22 @4451 has 15 MA's), (26, 4460), (Start: 41 @4526 has 1 MA's), (Start: 42 @4529 has 15 MA's), (66, 4775),

Gene: Cerasum_6 Start: 4408, Stop: 4944, Start Num: 38

Candidate Starts for Cerasum_6:

(Start: 38 @4408 has 53 MA's), (65, 4630), (72, 4699), (74, 4708), (82, 4810), (93, 4927),

Gene: Chancellor_13 Start: 8544, Stop: 9116, Start Num: 37

Candidate Starts for Chancellor_13:

(Start: 37 @8544 has 52 MA's), (69, 8832), (76, 8877),

Gene: Che9d_6 Start: 4316, Stop: 4864, Start Num: 40

Candidate Starts for Che9d_6:

(2, 3893), (4, 4025), (11, 4100), (16, 4136), (18, 4199), (Start: 40 @4316 has 10 MA's), (53, 4421), (56, 4445), (71, 4604), (88, 4769),

Gene: CheeseTouch_6 Start: 4327, Stop: 4875, Start Num: 42

Candidate Starts for CheeseTouch_6:

(3, 3985), (4, 4027), (7, 4060), (9, 4096), (14, 4120), (16, 4141), (Start: 33 @4294 has 3 MA's), (Start: 42 @4327 has 15 MA's), (58, 4480), (83, 4723), (88, 4786),

Gene: CheetoDust_12 Start: 7333, Stop: 7875, Start Num: 36

Candidate Starts for CheetoDust_12:

(Start: 36 @7333 has 99 MA's), (60, 7468), (76, 7636), (90, 7831), (92, 7849), (93, 7858),

Gene: Cheetobro_13 Start: 8544, Stop: 9116, Start Num: 37

Candidate Starts for Cheetobro_13:

(Start: 37 @8544 has 52 MA's), (69, 8832), (76, 8877),

Gene: ChickenDinner_6 Start: 4412, Stop: 4948, Start Num: 38

Candidate Starts for ChickenDinner_6:

(Start: 38 @4412 has 53 MA's), (65, 4634), (72, 4703), (74, 4712), (76, 4730), (82, 4814), (93, 4931),

Gene: Chris_11 Start: 6182, Stop: 6724, Start Num: 36

Candidate Starts for Chris_11:

(Start: 36 @6182 has 99 MA's), (90, 6680), (92, 6698), (93, 6707),

Gene: Coco12_6 Start: 4408, Stop: 4944, Start Num: 38

Candidate Starts for Coco12_6:

(Start: 38 @4408 has 53 MA's), (65, 4630), (72, 4699), (74, 4708), (76, 4726), (82, 4810), (93, 4927),

Gene: Collard_10 Start: 7358, Stop: 7987, Start Num: 19

Candidate Starts for Collard_10:

(Start: 19 @7358 has 4 MA's), (Start: 23 @7397 has 1 MA's), (Start: 35 @7442 has 5 MA's), (Start: 39 @7463 has 3 MA's), (Start: 44 @7478 has 10 MA's), (48, 7490), (76, 7763),

Gene: Confidence_5 Start: 4598, Stop: 5254, Start Num: 22

Candidate Starts for Confidence_5:

(Start: 21 @4571 has 2 MA's), (Start: 22 @4598 has 15 MA's), (26, 4607), (30, 4631), (Start: 41 @4673 has 1 MA's), (Start: 42 @4676 has 15 MA's), (66, 4922),

Gene: Cornucopia_6 Start: 4408, Stop: 4944, Start Num: 38

Candidate Starts for Cornucopia_6:

(Start: 38 @4408 has 53 MA's), (72, 4699), (74, 4708), (93, 4927),

Gene: CrimD_12 Start: 7285, Stop: 7827, Start Num: 36

Candidate Starts for CrimD_12:

(Start: 36 @7285 has 99 MA's), (60, 7420), (73, 7564), (76, 7588), (90, 7783), (92, 7801), (93, 7810),

Gene: Curiosium_13 Start: 6689, Stop: 7222, Start Num: 35

Candidate Starts for Curiosium_13:

(Start: 35 @6689 has 5 MA's), (60, 6824), (76, 6992), (92, 7196), (93, 7205),

Gene: DS6A_10 Start: 7559, Stop: 8122, Start Num: 47

Candidate Starts for DS6A_10:

(Start: 47 @7559 has 1 MA's), (70, 7835), (75, 7868), (93, 8105),

Gene: DaWorst_6 Start: 4409, Stop: 4945, Start Num: 38

Candidate Starts for DaWorst_6:

(Start: 38 @4409 has 53 MA's), (65, 4631), (72, 4700), (74, 4709), (76, 4727), (82, 4811), (93, 4928),

Gene: Dadosky_10 Start: 7391, Stop: 7921, Start Num: 44

Candidate Starts for Dadosky_10:

(Start: 35 @7355 has 5 MA's), (Start: 39 @7376 has 3 MA's), (Start: 44 @7391 has 10 MA's), (48, 7403), (76, 7688),

Gene: Dalmuri_12 Start: 7357, Stop: 7899, Start Num: 36

Candidate Starts for Dalmuri_12:

(Start: 36 @7357 has 99 MA's), (60, 7492), (76, 7660), (90, 7855), (92, 7873), (93, 7882),

Gene: DarthP_11 Start: 7198, Stop: 7755, Start Num: 37

Candidate Starts for DarthP_11:

(29, 7180), (Start: 37 @7198 has 52 MA's), (76, 7522), (90, 7711), (92, 7729), (93, 7738),

Gene: Dartin_12 Start: 6370, Stop: 6936, Start Num: 32

Candidate Starts for Dartin_12:

(32, 6370), (Start: 36 @6376 has 99 MA's), (60, 6532), (76, 6700), (92, 6910),

Gene: Deby_12 Start: 7293, Stop: 7826, Start Num: 36

Candidate Starts for Deby_12:

(Start: 36 @7293 has 99 MA's), (60, 7422), (92, 7800), (93, 7809),

Gene: Demsculpinboyz_6 Start: 4307, Stop: 4855, Start Num: 40

Candidate Starts for Demsculpinboyz_6:

(4, 4016), (11, 4091), (16, 4127), (18, 4190), (Start: 40 @4307 has 10 MA's), (53, 4412), (56, 4436), (71, 4595), (88, 4760),

Gene: Devera_12 Start: 7321, Stop: 7854, Start Num: 36

Candidate Starts for Devera_12:

(Start: 36 @7321 has 99 MA's), (60, 7447), (76, 7615), (92, 7828), (93, 7837),

Gene: DirtMcgirt_6 Start: 4410, Stop: 4946, Start Num: 38

Candidate Starts for DirtMcgirt_6:

(Start: 38 @4410 has 53 MA's), (65, 4632), (72, 4701), (74, 4710), (82, 4812), (93, 4929),

Gene: DismalFunk_8 Start: 5349, Stop: 5891, Start Num: 37

Candidate Starts for DismalFunk_8:

(Start: 37 @5349 has 52 MA's), (73, 5652), (76, 5670), (92, 5865),

Gene: DismalStressor_8 Start: 5349, Stop: 5891, Start Num: 37

Candidate Starts for DismalStressor_8:

(Start: 37 @5349 has 52 MA's), (73, 5652), (76, 5670), (92, 5865),

Gene: DocMcStuffins_6 Start: 4412, Stop: 4948, Start Num: 38

Candidate Starts for DocMcStuffins_6:

(Start: 38 @4412 has 53 MA's), (65, 4634), (72, 4703), (74, 4712), (76, 4730), (82, 4814), (93, 4931),

Gene: Dole_12 Start: 7321, Stop: 7854, Start Num: 36

Candidate Starts for Dole_12:

(Start: 36 @7321 has 99 MA's), (60, 7447), (76, 7615), (92, 7828), (93, 7837),

Gene: DosHalletts_6 Start: 4408, Stop: 4944, Start Num: 38

Candidate Starts for DosHalletts_6:

(Start: 38 @4408 has 53 MA's), (65, 4630), (72, 4699), (74, 4708), (82, 4810), (93, 4927),

Gene: DrHayes_12 Start: 7263, Stop: 7805, Start Num: 36

Candidate Starts for DrHayes_12:

(Start: 36 @7263 has 99 MA's), (60, 7398), (76, 7566), (90, 7761), (92, 7779), (93, 7788),

Gene: Drago_6 Start: 4408, Stop: 4944, Start Num: 38

Candidate Starts for Drago_6:

(Start: 38 @4408 has 53 MA's), (65, 4630), (72, 4699), (74, 4708), (82, 4810), (93, 4927),

Gene: Durfee_12 Start: 7357, Stop: 7899, Start Num: 36

Candidate Starts for Durfee_12:

(Start: 36 @7357 has 99 MA's), (60, 7492), (76, 7660), (90, 7855), (92, 7873), (93, 7882),

Gene: EMSquaredA_5 Start: 4604, Stop: 5260, Start Num: 22

Candidate Starts for EMSquaredA_5:

(Start: 21 @4577 has 2 MA's), (Start: 22 @4604 has 15 MA's), (26, 4613), (30, 4637), (Start: 41 @4679 has 1 MA's), (Start: 42 @4682 has 15 MA's), (66, 4928),

Gene: Ecliptus_6 Start: 4342, Stop: 4902, Start Num: 40

Candidate Starts for Ecliptus_6:

(Start: 40 @4342 has 10 MA's), (56, 4483), (86, 4768), (88, 4807),

Gene: Edugator_9 Start: 7391, Stop: 7921, Start Num: 44

Candidate Starts for Edugator_9:

(Start: 35 @7355 has 5 MA's), (Start: 39 @7376 has 3 MA's), (Start: 44 @7391 has 10 MA's), (48, 7403), (76, 7688),

Gene: Efra2_12 Start: 6263, Stop: 6796, Start Num: 36

Candidate Starts for Efra2_12:

(32, 6257), (Start: 36 @6263 has 99 MA's), (60, 6392), (76, 6560), (92, 6770), (93, 6779),

Gene: Ekdilam_9 Start: 6928, Stop: 7482, Start Num: 37

Candidate Starts for Ekdilam_9:

(Start: 37 @6928 has 52 MA's), (76, 7249), (90, 7438), (92, 7456), (93, 7465),

Gene: Ellie_9 Start: 7015, Stop: 7581, Start Num: 37
Candidate Starts for Ellie_9:
(Start: 37 @7015 has 52 MA's), (76, 7348), (92, 7555), (93, 7564),

Gene: Emerson_12 Start: 7316, Stop: 7858, Start Num: 36
Candidate Starts for Emerson_12:
(Start: 36 @7316 has 99 MA's), (60, 7451), (76, 7619), (90, 7814), (92, 7832), (93, 7841),

Gene: EnalisNailo_5 Start: 4604, Stop: 5260, Start Num: 22
Candidate Starts for EnalisNailo_5:
(Start: 21 @4577 has 2 MA's), (Start: 22 @4604 has 15 MA's), (26, 4613), (30, 4637), (Start: 41 @4679 has 1 MA's), (Start: 42 @4682 has 15 MA's), (66, 4928),

Gene: Enby_6 Start: 4408, Stop: 4944, Start Num: 38
Candidate Starts for Enby_6:
(Start: 38 @4408 has 53 MA's), (65, 4630), (72, 4699), (74, 4708), (82, 4810), (93, 4927),

Gene: Enkosi_8 Start: 6589, Stop: 7137, Start Num: 36
Candidate Starts for Enkosi_8:
(Start: 36 @6589 has 99 MA's), (76, 6904), (90, 7093), (92, 7111),

Gene: Eponine_13 Start: 8420, Stop: 8992, Start Num: 37
Candidate Starts for Eponine_13:
(12, 8240), (Start: 37 @8420 has 52 MA's), (69, 8708), (76, 8753),

Gene: Farewell_5 Start: 4759, Stop: 5304, Start Num: 46
Candidate Starts for Farewell_5:
(Start: 46 @4759 has 2 MA's), (59, 4870), (60, 4879), (81, 5128), (85, 5164), (89, 5236),

Gene: Fefferhead_11 Start: 7185, Stop: 7748, Start Num: 37
Candidate Starts for Fefferhead_11:
(Start: 37 @7185 has 52 MA's), (76, 7515), (92, 7722), (93, 7731),

Gene: Feyre_10 Start: 7278, Stop: 7802, Start Num: 39
Candidate Starts for Feyre_10:
(Start: 19 @7173 has 4 MA's), (Start: 23 @7212 has 1 MA's), (Start: 35 @7257 has 5 MA's), (Start: 39 @7278 has 3 MA's), (Start: 44 @7293 has 10 MA's), (48, 7305), (76, 7578),

Gene: Findley_8 Start: 5349, Stop: 5891, Start Num: 37
Candidate Starts for Findley_8:
(Start: 37 @5349 has 52 MA's), (73, 5652), (76, 5670), (92, 5865),

Gene: Fionnbharth_13 Start: 8534, Stop: 9106, Start Num: 37
Candidate Starts for Fionnbharth_13:
(Start: 37 @8534 has 52 MA's), (69, 8822), (76, 8867),

Gene: Flathead_6 Start: 4408, Stop: 4944, Start Num: 38
Candidate Starts for Flathead_6:
(Start: 38 @4408 has 53 MA's), (65, 4630), (72, 4699), (74, 4708), (82, 4810), (93, 4927),

Gene: Floral_5 Start: 4604, Stop: 5260, Start Num: 22
Candidate Starts for Floral_5:

(Start: 21 @4577 has 2 MA's), (Start: 22 @4604 has 15 MA's), (26, 4613), (30, 4637), (Start: 41 @4679 has 1 MA's), (Start: 42 @4682 has 15 MA's), (66, 4928),

Gene: Frankie_6 Start: 4602, Stop: 5138, Start Num: 38

Candidate Starts for Frankie_6:

(Start: 38 @4602 has 53 MA's), (65, 4824), (72, 4893), (74, 4902), (82, 5004), (93, 5121),

Gene: Frickyeah_6 Start: 4327, Stop: 4878, Start Num: 42

Candidate Starts for Frickyeah_6:

(Start: 42 @4327 has 15 MA's), (51, 4408), (58, 4480), (88, 4786),

Gene: Ganymede_12 Start: 7333, Stop: 7875, Start Num: 36

Candidate Starts for Ganymede_12:

(Start: 36 @7333 has 99 MA's), (60, 7468), (76, 7636), (90, 7831), (92, 7849), (93, 7858),

Gene: Gengar_10 Start: 7279, Stop: 7908, Start Num: 19

Candidate Starts for Gengar_10:

(Start: 19 @7279 has 4 MA's), (Start: 23 @7318 has 1 MA's), (Start: 35 @7363 has 5 MA's), (Start: 39 @7384 has 3 MA's), (Start: 44 @7399 has 10 MA's), (48, 7411), (76, 7684),

Gene: Geraldini_12 Start: 7339, Stop: 7875, Start Num: 36

Candidate Starts for Geraldini_12:

(Start: 36 @7339 has 99 MA's), (60, 7468), (76, 7636), (90, 7831), (92, 7849), (93, 7858),

Gene: Getalong_6 Start: 4327, Stop: 4878, Start Num: 42

Candidate Starts for Getalong_6:

(Start: 42 @4327 has 15 MA's), (51, 4408), (58, 4480), (88, 4786),

Gene: Girafales_6 Start: 4403, Stop: 4939, Start Num: 38

Candidate Starts for Girafales_6:

(Start: 38 @4403 has 53 MA's), (72, 4694), (74, 4703), (93, 4922),

Gene: Guanica15_12 Start: 6279, Stop: 6812, Start Num: 36

Candidate Starts for Guanica15_12:

(32, 6273), (Start: 36 @6279 has 99 MA's), (60, 6408), (76, 6576), (92, 6786), (93, 6795),

Gene: Guillsminger_10 Start: 7293, Stop: 7883, Start Num: 23

Candidate Starts for Guillsminger_10:

(Start: 19 @7254 has 4 MA's), (Start: 23 @7293 has 1 MA's), (Start: 35 @7338 has 5 MA's), (Start: 39 @7359 has 3 MA's), (Start: 44 @7374 has 10 MA's), (48, 7386), (76, 7659),

Gene: Hammy_11 Start: 7195, Stop: 7752, Start Num: 37

Candidate Starts for Hammy_11:

(29, 7177), (Start: 37 @7195 has 52 MA's), (76, 7519), (90, 7708), (93, 7735),

Gene: HedwigODU_12 Start: 7313, Stop: 7855, Start Num: 36

Candidate Starts for HedwigODU_12:

(Start: 36 @7313 has 99 MA's), (60, 7448), (76, 7616), (90, 7811), (92, 7829), (93, 7838),

Gene: Heftyboy_10 Start: 7501, Stop: 8010, Start Num: 44

Candidate Starts for Heftyboy_10:

(Start: 19 @7381 has 4 MA's), (Start: 23 @7420 has 1 MA's), (Start: 35 @7465 has 5 MA's), (Start: 39 @7486 has 3 MA's), (Start: 44 @7501 has 10 MA's), (48, 7513), (76, 7786),

Gene: Hegedechwinu_6 Start: 4408, Stop: 4944, Start Num: 38
Candidate Starts for Hegedechwinu_6:
(Start: 38 @4408 has 53 MA's), (65, 4630), (74, 4708), (82, 4810), (93, 4927),

Gene: Holliday_6 Start: 4294, Stop: 4875, Start Num: 33
Candidate Starts for Holliday_6:
(3, 3985), (4, 4027), (7, 4060), (9, 4096), (14, 4120), (16, 4141), (Start: 33 @4294 has 3 MA's), (Start: 42 @4327 has 15 MA's), (58, 4480), (83, 4723), (88, 4786),

Gene: Homura_12 Start: 7357, Stop: 7899, Start Num: 36
Candidate Starts for Homura_12:
(Start: 36 @7357 has 99 MA's), (60, 7492), (76, 7660), (90, 7855), (92, 7873), (93, 7882),

Gene: Horus_6 Start: 4327, Stop: 4878, Start Num: 42
Candidate Starts for Horus_6:
(Start: 42 @4327 has 15 MA's), (51, 4408), (58, 4480), (88, 4786),

Gene: Hurricane_11 Start: 7335, Stop: 7883, Start Num: 45
Candidate Starts for Hurricane_11:
(15, 7140), (Start: 34 @7299 has 3 MA's), (Start: 45 @7335 has 6 MA's), (57, 7461), (65, 7545), (76, 7647), (93, 7866),

Gene: Hyperbowlee_12 Start: 7357, Stop: 7899, Start Num: 36
Candidate Starts for Hyperbowlee_12:
(Start: 36 @7357 has 99 MA's), (60, 7492), (76, 7660), (90, 7855), (92, 7873), (93, 7882),

Gene: Illumine_12 Start: 7321, Stop: 7854, Start Num: 36
Candidate Starts for Illumine_12:
(Start: 36 @7321 has 99 MA's), (60, 7447), (76, 7615), (92, 7828), (93, 7837),

Gene: Inky_12 Start: 7357, Stop: 7899, Start Num: 36
Candidate Starts for Inky_12:
(Start: 36 @7357 has 99 MA's), (60, 7492), (76, 7660), (90, 7855), (92, 7873), (93, 7882),

Gene: InvictusManeo_10 Start: 7500, Stop: 8030, Start Num: 44
Candidate Starts for InvictusManeo_10:
(17, 7356), (Start: 19 @7377 has 4 MA's), (Start: 35 @7464 has 5 MA's), (Start: 39 @7485 has 3 MA's), (Start: 44 @7500 has 10 MA's), (48, 7512), (76, 7797),

Gene: JAWS_12 Start: 7310, Stop: 7852, Start Num: 36
Candidate Starts for JAWS_12:
(Start: 36 @7310 has 99 MA's), (60, 7445), (76, 7613), (90, 7808), (92, 7826), (93, 7835),

Gene: JF1_13 Start: 8533, Stop: 9105, Start Num: 37
Candidate Starts for JF1_13:
(Start: 37 @8533 has 52 MA's), (69, 8821), (76, 8866),

Gene: Jabbawokkie_7 Start: 4830, Stop: 5378, Start Num: 40
Candidate Starts for Jabbawokkie_7:
(2, 4407), (4, 4539), (11, 4614), (16, 4650), (18, 4713), (Start: 40 @4830 has 10 MA's), (53, 4935), (56, 4959), (71, 5118), (88, 5283),

Gene: Jablanski_5 Start: 4451, Stop: 5107, Start Num: 22
Candidate Starts for Jablanski_5:
(Start: 21 @4424 has 2 MA's), (Start: 22 @4451 has 15 MA's), (26, 4460), (30, 4484), (Start: 41 @4526 has 1 MA's), (Start: 42 @4529 has 15 MA's), (66, 4775),

Gene: JalFarm20_6 Start: 4408, Stop: 4944, Start Num: 38
Candidate Starts for JalFarm20_6:
(Start: 38 @4408 has 53 MA's), (65, 4630), (72, 4699), (74, 4708), (82, 4810), (93, 4927),

Gene: Jarvi_12 Start: 7357, Stop: 7899, Start Num: 36
Candidate Starts for Jarvi_12:
(Start: 36 @7357 has 99 MA's), (60, 7492), (76, 7660), (90, 7855), (92, 7873), (93, 7882),

Gene: Jayhawk_12 Start: 7314, Stop: 7856, Start Num: 37
Candidate Starts for Jayhawk_12:
(13, 7131), (Start: 37 @7314 has 52 MA's), (60, 7449), (76, 7617), (90, 7812), (92, 7830), (93, 7839),

Gene: Jeckyll_12 Start: 7357, Stop: 7899, Start Num: 36
Candidate Starts for Jeckyll_12:
(Start: 36 @7357 has 99 MA's), (60, 7492), (76, 7660), (90, 7855), (92, 7873), (93, 7882),

Gene: Job42_6 Start: 4408, Stop: 4944, Start Num: 38
Candidate Starts for Job42_6:
(Start: 38 @4408 has 53 MA's), (65, 4630), (72, 4699), (74, 4708), (76, 4726), (80, 4786), (82, 4810), (93, 4927),

Gene: Joy99_12 Start: 7289, Stop: 7825, Start Num: 36
Candidate Starts for Joy99_12:
(Start: 36 @7289 has 99 MA's), (60, 7418), (76, 7586), (90, 7781), (92, 7799), (93, 7808),

Gene: Juice456_6 Start: 4409, Stop: 4945, Start Num: 38
Candidate Starts for Juice456_6:
(Start: 38 @4409 has 53 MA's), (65, 4631), (72, 4700), (74, 4709), (82, 4811), (93, 4928),

Gene: Juliette_13 Start: 8420, Stop: 8992, Start Num: 37
Candidate Starts for Juliette_13:
(12, 8240), (Start: 37 @8420 has 52 MA's), (69, 8708), (76, 8753),

Gene: Kamaru_6 Start: 4327, Stop: 4875, Start Num: 42
Candidate Starts for Kamaru_6:
(3, 3985), (4, 4027), (7, 4060), (9, 4096), (14, 4120), (16, 4141), (Start: 33 @4294 has 3 MA's), (Start: 42 @4327 has 15 MA's), (58, 4480), (83, 4723), (88, 4786),

Gene: Kenna_6 Start: 4327, Stop: 4878, Start Num: 42
Candidate Starts for Kenna_6:
(Start: 42 @4327 has 15 MA's), (51, 4408), (58, 4480), (88, 4786),

Gene: Keshu_11 Start: 7324, Stop: 7872, Start Num: 45
Candidate Starts for Keshu_11:
(Start: 45 @7324 has 6 MA's), (53, 7417), (76, 7636), (93, 7855),

Gene: KiSi_11 Start: 6171, Stop: 6728, Start Num: 36
Candidate Starts for KiSi_11:

(Start: 36 @6171 has 99 MA's), (90, 6684), (92, 6702), (93, 6711),

Gene: Kimberlium_6 Start: 4409, Stop: 4945, Start Num: 38

Candidate Starts for Kimberlium_6:

(Start: 38 @4409 has 53 MA's), (65, 4631), (72, 4700), (74, 4709), (82, 4811), (93, 4928),

Gene: Kingsley_6 Start: 4408, Stop: 4944, Start Num: 38

Candidate Starts for Kingsley_6:

(Start: 38 @4408 has 53 MA's), (65, 4630), (72, 4699), (74, 4708), (82, 4810), (93, 4927),

Gene: Kratio_9 Start: 7091, Stop: 7657, Start Num: 35

Candidate Starts for Kratio_9:

(Start: 35 @7091 has 5 MA's), (Start: 39 @7112 has 3 MA's), (Start: 44 @7127 has 10 MA's), (48, 7139), (76, 7424),

Gene: Kraw_13 Start: 8453, Stop: 9025, Start Num: 37

Candidate Starts for Kraw_13:

(Start: 37 @8453 has 52 MA's), (69, 8741), (76, 8786),

Gene: Krueger_11 Start: 6185, Stop: 6796, Start Num: 24

Candidate Starts for Krueger_11:

(Start: 24 @6185 has 1 MA's), (Start: 37 @6224 has 52 MA's), (68, 6512), (76, 6563), (79, 6602), (92, 6770), (93, 6779),

Gene: Larva_10 Start: 7222, Stop: 7788, Start Num: 35

Candidate Starts for Larva_10:

(Start: 35 @7222 has 5 MA's), (Start: 39 @7243 has 3 MA's), (Start: 44 @7258 has 10 MA's), (48, 7270), (76, 7555),

Gene: LastHope_12 Start: 6334, Stop: 6882, Start Num: 35

Candidate Starts for LastHope_12:

(Start: 35 @6334 has 5 MA's), (60, 6484), (76, 6652), (79, 6691), (90, 6838), (92, 6856), (93, 6865),

Gene: LaterM_12 Start: 7280, Stop: 7822, Start Num: 36

Candidate Starts for LaterM_12:

(Start: 36 @7280 has 99 MA's), (60, 7415), (76, 7583), (92, 7796), (93, 7805),

Gene: LeMond_11 Start: 6171, Stop: 6728, Start Num: 36

Candidate Starts for LeMond_11:

(Start: 36 @6171 has 99 MA's), (90, 6684), (92, 6702), (93, 6711),

Gene: Leozinho_6 Start: 4408, Stop: 4944, Start Num: 38

Candidate Starts for Leozinho_6:

(Start: 38 @4408 has 53 MA's), (65, 4630), (72, 4699), (74, 4708), (82, 4810), (93, 4927),

Gene: Leroy_6 Start: 4328, Stop: 4879, Start Num: 42

Candidate Starts for Leroy_6:

(Start: 42 @4328 has 15 MA's), (51, 4409), (58, 4481), (88, 4787),

Gene: Leston_10 Start: 7384, Stop: 8013, Start Num: 19

Candidate Starts for Leston_10:

(Start: 19 @7384 has 4 MA's), (Start: 23 @7423 has 1 MA's), (Start: 35 @7468 has 5 MA's), (Start: 39 @7489 has 3 MA's), (Start: 44 @7504 has 10 MA's), (48, 7516), (76, 7789),

Gene: LilPharaoh_8 Start: 6589, Stop: 7137, Start Num: 36
Candidate Starts for LilPharaoh_8:
(Start: 36 @6589 has 99 MA's), (76, 6904), (90, 7093), (92, 7111),

Gene: Lilas_5 Start: 4604, Stop: 5260, Start Num: 22
Candidate Starts for Lilas_5:
(Start: 21 @4577 has 2 MA's), (Start: 22 @4604 has 15 MA's), (26, 4613), (30, 4637), (Start: 41 @4679 has 1 MA's), (Start: 42 @4682 has 15 MA's), (66, 4928),

Gene: LindNT_12 Start: 7280, Stop: 7822, Start Num: 36
Candidate Starts for LindNT_12:
(Start: 36 @7280 has 99 MA's), (60, 7415), (76, 7583), (90, 7778), (92, 7796), (93, 7805),

Gene: LitninMcQueen_6 Start: 4327, Stop: 4875, Start Num: 42
Candidate Starts for LitninMcQueen_6:
(3, 3985), (4, 4027), (7, 4060), (9, 4096), (14, 4120), (16, 4141), (Start: 33 @4294 has 3 MA's), (Start: 42 @4327 has 15 MA's), (58, 4480), (83, 4723), (88, 4786),

Gene: LittleShirley_6 Start: 4409, Stop: 4945, Start Num: 38
Candidate Starts for LittleShirley_6:
(Start: 38 @4409 has 53 MA's), (65, 4631), (72, 4700), (74, 4709), (82, 4811), (93, 4928),

Gene: Llorens_12 Start: 7357, Stop: 7899, Start Num: 36
Candidate Starts for Llorens_12:
(Start: 36 @7357 has 99 MA's), (60, 7492), (76, 7660), (90, 7855), (92, 7873), (93, 7882),

Gene: LonelyBoi_5 Start: 4451, Stop: 5107, Start Num: 22
Candidate Starts for LonelyBoi_5:
(Start: 21 @4424 has 2 MA's), (Start: 22 @4451 has 15 MA's), (26, 4460), (30, 4484), (Start: 41 @4526 has 1 MA's), (Start: 42 @4529 has 15 MA's), (66, 4775),

Gene: Lorde_6 Start: 4408, Stop: 4944, Start Num: 38
Candidate Starts for Lorde_6:
(Start: 38 @4408 has 53 MA's), (65, 4630), (72, 4699), (74, 4708), (82, 4810), (93, 4927),

Gene: Lunahalos_12 Start: 7357, Stop: 7899, Start Num: 36
Candidate Starts for Lunahalos_12:
(Start: 36 @7357 has 99 MA's), (60, 7492), (76, 7660), (90, 7855), (92, 7873), (93, 7882),

Gene: Lutum_6 Start: 4327, Stop: 4878, Start Num: 42
Candidate Starts for Lutum_6:
(Start: 42 @4327 has 15 MA's), (51, 4408), (58, 4480), (88, 4786),

Gene: MacnCheese_12 Start: 7513, Stop: 8091, Start Num: 34
Candidate Starts for MacnCheese_12:
(Start: 34 @7513 has 3 MA's), (Start: 45 @7549 has 6 MA's), (53, 7633), (76, 7852), (93, 8074),

Gene: Madiba_6 Start: 4407, Stop: 4943, Start Num: 38
Candidate Starts for Madiba_6:
(Start: 38 @4407 has 53 MA's), (65, 4629), (72, 4698), (74, 4707), (76, 4725), (80, 4785), (82, 4809), (93, 4926),

Gene: Malisha_6 Start: 5305, Stop: 5919, Start Num: 28
Candidate Starts for Malisha_6:
(Start: 28 @5305 has 1 MA's), (43, 5359), (53, 5458), (56, 5482), (78, 5695), (84, 5773), (87, 5794),
(88, 5824),

Gene: Malthus_13 Start: 8453, Stop: 9025, Start Num: 37
Candidate Starts for Malthus_13:
(Start: 37 @8453 has 52 MA's), (69, 8741), (76, 8786),

Gene: Marcoliusprime_8 Start: 5349, Stop: 5891, Start Num: 37
Candidate Starts for Marcoliusprime_8:
(Start: 37 @5349 has 52 MA's), (73, 5652), (76, 5670), (92, 5865),

Gene: MarkPhew_11 Start: 6090, Stop: 6629, Start Num: 36
Candidate Starts for MarkPhew_11:
(Start: 36 @6090 has 99 MA's), (68, 6342), (71, 6357), (90, 6585), (92, 6603), (93, 6612),

Gene: Marker_6 Start: 4407, Stop: 4943, Start Num: 38
Candidate Starts for Marker_6:
(Start: 38 @4407 has 53 MA's), (65, 4629), (72, 4698), (74, 4707), (76, 4725), (80, 4785), (82, 4809),
(93, 4926),

Gene: Marshawn_13 Start: 6726, Stop: 7280, Start Num: 36
Candidate Starts for Marshawn_13:
(Start: 36 @6726 has 99 MA's), (60, 6876), (71, 7008), (90, 7236), (92, 7254),

Gene: Marteena_5 Start: 4604, Stop: 5260, Start Num: 22
Candidate Starts for Marteena_5:
(Start: 21 @4577 has 2 MA's), (Start: 22 @4604 has 15 MA's), (26, 4613), (30, 4637), (Start: 41
@4679 has 1 MA's), (Start: 42 @4682 has 15 MA's), (66, 4928),

Gene: McMater_12 Start: 6370, Stop: 6936, Start Num: 32
Candidate Starts for McMater_12:
(32, 6370), (Start: 36 @6376 has 99 MA's), (60, 6532), (76, 6700), (92, 6910),

Gene: Mdavu_8 Start: 6577, Stop: 7125, Start Num: 36
Candidate Starts for Mdavu_8:
(Start: 36 @6577 has 99 MA's), (76, 6892), (90, 7081), (92, 7099),

Gene: MeaningOfLife_12 Start: 7286, Stop: 7828, Start Num: 36
Candidate Starts for MeaningOfLife_12:
(Start: 36 @7286 has 99 MA's), (60, 7421), (76, 7589), (90, 7784), (92, 7802), (93, 7811),

Gene: Megsy_12 Start: 7283, Stop: 7825, Start Num: 36
Candidate Starts for Megsy_12:
(Start: 36 @7283 has 99 MA's), (60, 7418), (76, 7586), (90, 7781), (92, 7799), (93, 7808),

Gene: Milly_8 Start: 5349, Stop: 5891, Start Num: 37
Candidate Starts for Milly_8:
(Start: 37 @5349 has 52 MA's), (73, 5652), (76, 5670), (92, 5865),

Gene: Miryou_10 Start: 7374, Stop: 7883, Start Num: 44
Candidate Starts for Miryou_10:

(Start: 19 @7254 has 4 MA's), (Start: 23 @7293 has 1 MA's), (Start: 35 @7338 has 5 MA's), (Start: 39 @7359 has 3 MA's), (Start: 44 @7374 has 10 MA's), (48, 7386), (76, 7659),

Gene: Misha28_6 Start: 4412, Stop: 4948, Start Num: 38

Candidate Starts for Misha28_6:

(Start: 38 @4412 has 53 MA's), (65, 4634), (72, 4703), (74, 4712), (76, 4730), (82, 4814), (93, 4931),

Gene: MissDaisy_13 Start: 8319, Stop: 8891, Start Num: 37

Candidate Starts for MissDaisy_13:

(Start: 37 @8319 has 52 MA's), (69, 8607), (76, 8652),

Gene: Mitti_13 Start: 8457, Stop: 9029, Start Num: 37

Candidate Starts for Mitti_13:

(Start: 37 @8457 has 52 MA's), (69, 8745), (76, 8790),

Gene: Mova_6 Start: 4410, Stop: 4946, Start Num: 38

Candidate Starts for Mova_6:

(Start: 38 @4410 has 53 MA's), (65, 4632), (72, 4701), (74, 4710), (76, 4728), (82, 4812), (93, 4929),

Gene: Mozy_6 Start: 4405, Stop: 4941, Start Num: 38

Candidate Starts for Mozy_6:

(Start: 38 @4405 has 53 MA's), (72, 4696), (74, 4705), (93, 4924),

Gene: Mufasa_8 Start: 5333, Stop: 5878, Start Num: 37

Candidate Starts for Mufasa_8:

(Start: 37 @5333 has 52 MA's), (73, 5636), (76, 5654), (92, 5852),

Gene: MulchExplorer_6 Start: 4409, Stop: 4945, Start Num: 38

Candidate Starts for MulchExplorer_6:

(Start: 38 @4409 has 53 MA's), (65, 4631), (72, 4700), (74, 4709), (82, 4811), (93, 4928),

Gene: Murucutumbu_12 Start: 7273, Stop: 7815, Start Num: 36

Candidate Starts for Murucutumbu_12:

(Start: 36 @7273 has 99 MA's), (60, 7408), (76, 7576), (92, 7789), (93, 7798),

Gene: Mynx_12 Start: 7336, Stop: 7878, Start Num: 36

Candidate Starts for Mynx_12:

(Start: 36 @7336 has 99 MA's), (60, 7471), (76, 7639), (90, 7834), (92, 7852), (93, 7861),

Gene: Nibb_11 Start: 6227, Stop: 6772, Start Num: 36

Candidate Starts for Nibb_11:

(Start: 36 @6227 has 99 MA's), (79, 6572), (90, 6728), (92, 6746), (93, 6755),

Gene: Nikao_8 Start: 6589, Stop: 7137, Start Num: 36

Candidate Starts for Nikao_8:

(Start: 36 @6589 has 99 MA's), (76, 6904), (90, 7093), (92, 7111),

Gene: Niklas_12 Start: 6376, Stop: 6936, Start Num: 36

Candidate Starts for Niklas_12:

(32, 6370), (Start: 36 @6376 has 99 MA's), (60, 6532), (76, 6700), (92, 6910),

Gene: Nutello_8 Start: 6589, Stop: 7137, Start Num: 36

Candidate Starts for Nutello_8:

(Start: 36 @6589 has 99 MA's), (76, 6904), (90, 7093), (92, 7111),

Gene: ODay_6 Start: 4340, Stop: 4900, Start Num: 40

Candidate Starts for ODay_6:

(Start: 40 @4340 has 10 MA's), (56, 4481), (86, 4766), (88, 4805),

Gene: Ogopogo_7 Start: 4568, Stop: 5116, Start Num: 40

Candidate Starts for Ogopogo_7:

(2, 4145), (4, 4277), (11, 4352), (16, 4388), (18, 4451), (Start: 40 @4568 has 10 MA's), (53, 4673), (56, 4697), (71, 4856), (88, 5021),

Gene: OkiRoe_10 Start: 7360, Stop: 7884, Start Num: 39

Candidate Starts for OkiRoe_10:

(Start: 19 @7255 has 4 MA's), (Start: 23 @7294 has 1 MA's), (Start: 35 @7339 has 5 MA's), (Start: 39 @7360 has 3 MA's), (Start: 44 @7375 has 10 MA's), (48, 7387), (76, 7660),

Gene: Oksu_6 Start: 4409, Stop: 4945, Start Num: 38

Candidate Starts for Oksu_6:

(Start: 38 @4409 has 53 MA's), (65, 4631), (72, 4700), (74, 4709), (82, 4811), (93, 4928),

Gene: OmniCritical_13 Start: 8444, Stop: 9016, Start Num: 37

Candidate Starts for OmniCritical_13:

(Start: 37 @8444 has 52 MA's), (69, 8732), (76, 8777),

Gene: Omnicron_10 Start: 6242, Stop: 6898, Start Num: 19

Candidate Starts for Omnicron_10:

(Start: 19 @6242 has 4 MA's), (Start: 23 @6281 has 1 MA's), (Start: 37 @6329 has 52 MA's), (Start: 45 @6365 has 6 MA's), (48, 6377), (76, 6665), (92, 6872),

Gene: Oscar_11 Start: 6172, Stop: 6729, Start Num: 36

Candidate Starts for Oscar_11:

(Start: 36 @6172 has 99 MA's), (90, 6685), (92, 6703), (93, 6712),

Gene: OwlsT2W_6 Start: 4408, Stop: 4944, Start Num: 38

Candidate Starts for OwlsT2W_6:

(Start: 38 @4408 has 53 MA's), (65, 4630), (72, 4699), (74, 4708), (82, 4810), (93, 4927),

Gene: Padfoot_12 Start: 7357, Stop: 7899, Start Num: 36

Candidate Starts for Padfoot_12:

(Start: 36 @7357 has 99 MA's), (60, 7492), (76, 7660), (90, 7855), (92, 7873), (93, 7882),

Gene: Padpat_12 Start: 7316, Stop: 7858, Start Num: 36

Candidate Starts for Padpat_12:

(Start: 36 @7316 has 99 MA's), (60, 7451), (76, 7619), (90, 7814), (92, 7832), (93, 7841),

Gene: Paola_10 Start: 7359, Stop: 7883, Start Num: 39

Candidate Starts for Paola_10:

(Start: 19 @7254 has 4 MA's), (Start: 23 @7293 has 1 MA's), (Start: 35 @7338 has 5 MA's), (Start: 39 @7359 has 3 MA's), (Start: 44 @7374 has 10 MA's), (48, 7386), (76, 7659),

Gene: Patt_13 Start: 8295, Stop: 8867, Start Num: 37

Candidate Starts for Patt_13:

(Start: 37 @8295 has 52 MA's), (69, 8583), (76, 8628),

Gene: Peanam_12 Start: 6376, Stop: 6936, Start Num: 36

Candidate Starts for Peanam_12:

(32, 6370), (Start: 36 @6376 has 99 MA's), (60, 6532), (76, 6700), (92, 6910),

Gene: Peel_12 Start: 7357, Stop: 7899, Start Num: 36

Candidate Starts for Peel_12:

(Start: 36 @7357 has 99 MA's), (60, 7492), (76, 7660), (90, 7855), (92, 7873), (93, 7882),

Gene: Periwinkle_6 Start: 4327, Stop: 4878, Start Num: 42

Candidate Starts for Periwinkle_6:

(Start: 42 @4327 has 15 MA's), (51, 4408), (58, 4480), (88, 4786),

Gene: Phabuloso_6 Start: 4327, Stop: 4875, Start Num: 42

Candidate Starts for Phabuloso_6:

(3, 3985), (4, 4027), (7, 4060), (9, 4096), (14, 4120), (16, 4141), (Start: 33 @4294 has 3 MA's), (Start: 42 @4327 has 15 MA's), (58, 4480), (83, 4723), (88, 4786),

Gene: Pharb_11 Start: 7169, Stop: 7717, Start Num: 45

Candidate Starts for Pharb_11:

(Start: 23 @7088 has 1 MA's), (27, 7094), (Start: 45 @7169 has 6 MA's), (49, 7184), (76, 7481), (93, 7700),

Gene: PhelpsODU_11 Start: 6278, Stop: 6850, Start Num: 37

Candidate Starts for PhelpsODU_11:

(10, 6080), (25, 6236), (Start: 37 @6278 has 52 MA's), (76, 6617), (79, 6656), (90, 6806), (92, 6824),

Gene: Phistory_6 Start: 4325, Stop: 4867, Start Num: 42

Candidate Starts for Phistory_6:

(3, 3986), (4, 4028), (5, 4034), (7, 4061), (8, 4067), (14, 4121), (16, 4142), (Start: 33 @4295 has 3 MA's), (Start: 42 @4325 has 15 MA's), (58, 4469), (64, 4541), (79, 4661), (88, 4775),

Gene: Phrank_11 Start: 6234, Stop: 6800, Start Num: 37

Candidate Starts for Phrank_11:

(Start: 37 @6234 has 52 MA's), (76, 6567), (79, 6606), (93, 6783),

Gene: Piatt_12 Start: 7357, Stop: 7899, Start Num: 36

Candidate Starts for Piatt_12:

(Start: 36 @7357 has 99 MA's), (60, 7492), (76, 7660), (90, 7855), (92, 7873), (93, 7882),

Gene: Piper2020_6 Start: 4411, Stop: 4947, Start Num: 38

Candidate Starts for Piper2020_6:

(Start: 38 @4411 has 53 MA's), (65, 4633), (72, 4702), (74, 4711), (76, 4729), (82, 4813), (93, 4930),

Gene: Pitbull_5 Start: 3934, Stop: 4455, Start Num: 41

Candidate Starts for Pitbull_5:

(Start: 41 @3934 has 1 MA's), (63, 4144), (65, 4165),

Gene: Pixie_11 Start: 7042, Stop: 7626, Start Num: 34

Candidate Starts for Pixie_11:

(Start: 34 @7042 has 3 MA's), (Start: 45 @7078 has 6 MA's), (71, 7354), (76, 7390), (93, 7609),

Gene: Plumbus_6 Start: 4409, Stop: 4945, Start Num: 38

Candidate Starts for Plumbus_6:

(Start: 38 @4409 has 53 MA's), (65, 4631), (72, 4700), (74, 4709), (82, 4811), (93, 4928),

Gene: Pokerus_11 Start: 7270, Stop: 7812, Start Num: 36

Candidate Starts for Pokerus_11:

(Start: 36 @7270 has 99 MA's), (60, 7405), (76, 7573), (90, 7768), (92, 7786), (93, 7795),

Gene: Pollux_5 Start: 4577, Stop: 5260, Start Num: 21

Candidate Starts for Pollux_5:

(Start: 21 @4577 has 2 MA's), (Start: 22 @4604 has 15 MA's), (26, 4613), (30, 4637), (Start: 41 @4679 has 1 MA's), (Start: 42 @4682 has 15 MA's), (66, 4928),

Gene: Pollywog_6 Start: 4408, Stop: 4944, Start Num: 38

Candidate Starts for Pollywog_6:

(Start: 38 @4408 has 53 MA's), (65, 4630), (72, 4699), (74, 4708), (76, 4726), (82, 4810), (93, 4927),

Gene: Posh_5 Start: 4598, Stop: 5254, Start Num: 22

Candidate Starts for Posh_5:

(Start: 21 @4571 has 2 MA's), (Start: 22 @4598 has 15 MA's), (26, 4607), (30, 4631), (Start: 41 @4673 has 1 MA's), (Start: 42 @4676 has 15 MA's), (66, 4922),

Gene: Prithvi_12 Start: 7280, Stop: 7822, Start Num: 36

Candidate Starts for Prithvi_12:

(Start: 36 @7280 has 99 MA's), (60, 7415), (76, 7583), (90, 7778), (92, 7796), (93, 7805),

Gene: Psycho_10 Start: 7388, Stop: 7918, Start Num: 44

Candidate Starts for Psycho_10:

(Start: 35 @7352 has 5 MA's), (Start: 39 @7373 has 3 MA's), (Start: 44 @7388 has 10 MA's), (48, 7400), (76, 7685),

Gene: Pytheas_5 Start: 4451, Stop: 5107, Start Num: 22

Candidate Starts for Pytheas_5:

(Start: 21 @4424 has 2 MA's), (Start: 22 @4451 has 15 MA's), (26, 4460), (30, 4484), (Start: 41 @4526 has 1 MA's), (Start: 42 @4529 has 15 MA's), (66, 4775),

Gene: Quico_6 Start: 4403, Stop: 4939, Start Num: 38

Candidate Starts for Quico_6:

(Start: 38 @4403 has 53 MA's), (72, 4694), (74, 4703), (93, 4922),

Gene: QuincyRose_11 Start: 7333, Stop: 7875, Start Num: 36

Candidate Starts for QuincyRose_11:

(Start: 36 @7333 has 99 MA's), (60, 7468), (76, 7636), (90, 7831), (92, 7849), (93, 7858),

Gene: Ramen_12 Start: 7313, Stop: 7855, Start Num: 36

Candidate Starts for Ramen_12:

(Start: 36 @7313 has 99 MA's), (60, 7448), (76, 7616), (90, 7811), (92, 7829), (93, 7838),

Gene: Ramsey_6 Start: 4408, Stop: 4944, Start Num: 38

Candidate Starts for Ramsey_6:

(Start: 38 @4408 has 53 MA's), (72, 4699), (74, 4708), (82, 4810), (93, 4927),

Gene: Rando14_10 Start: 6393, Stop: 6926, Start Num: 45

Candidate Starts for Rando14_10:

(Start: 37 @6357 has 52 MA's), (Start: 45 @6393 has 6 MA's), (48, 6405), (76, 6693), (80, 6753), (92, 6900),

Gene: Rapunzel97_12 Start: 7314, Stop: 7856, Start Num: 37

Candidate Starts for Rapunzel97_12:

(13, 7131), (Start: 37 @7314 has 52 MA's), (60, 7449), (76, 7617), (90, 7812), (92, 7830), (93, 7839),

Gene: Reptar3000_13 Start: 8297, Stop: 8869, Start Num: 37

Candidate Starts for Reptar3000_13:

(Start: 37 @8297 has 52 MA's), (69, 8585), (76, 8630),

Gene: Rialto_6 Start: 4409, Stop: 4945, Start Num: 38

Candidate Starts for Rialto_6:

(Start: 38 @4409 has 53 MA's), (65, 4631), (72, 4700), (74, 4709), (76, 4727), (82, 4811), (93, 4928),

Gene: Richo_12 Start: 6370, Stop: 6936, Start Num: 32

Candidate Starts for Richo_12:

(32, 6370), (Start: 36 @6376 has 99 MA's), (60, 6532), (76, 6700), (92, 6910),

Gene: RockyHorror_6 Start: 4408, Stop: 4944, Start Num: 38

Candidate Starts for RockyHorror_6:

(Start: 38 @4408 has 53 MA's), (65, 4630), (72, 4699), (74, 4708), (82, 4810), (93, 4927),

Gene: Rosmarinus_12 Start: 7345, Stop: 7887, Start Num: 36

Candidate Starts for Rosmarinus_12:

(Start: 36 @7345 has 99 MA's), (60, 7480), (76, 7648), (90, 7843), (92, 7861), (93, 7870),

Gene: Ruthiejr_12 Start: 8151, Stop: 8723, Start Num: 37

Candidate Starts for Ruthiejr_12:

(12, 7971), (Start: 37 @8151 has 52 MA's), (69, 8439), (76, 8484),

Gene: SamScheppers_11 Start: 8060, Stop: 8632, Start Num: 37

Candidate Starts for SamScheppers_11:

(Start: 37 @8060 has 52 MA's), (69, 8348), (76, 8393),

Gene: SamuelLPlaqson_12 Start: 7263, Stop: 7805, Start Num: 36

Candidate Starts for SamuelLPlaqson_12:

(Start: 36 @7263 has 99 MA's), (60, 7398), (76, 7566), (90, 7761), (92, 7779), (93, 7788),

Gene: Sarma624_6 Start: 4408, Stop: 4944, Start Num: 38

Candidate Starts for Sarma624_6:

(Start: 38 @4408 has 53 MA's), (65, 4630), (72, 4699), (74, 4708), (82, 4810), (93, 4927),

Gene: Scarlett_11 Start: 6171, Stop: 6728, Start Num: 36

Candidate Starts for Scarlett_11:

(Start: 36 @6171 has 99 MA's), (90, 6684), (92, 6702), (93, 6711),

Gene: Seagreen_6 Start: 4409, Stop: 4945, Start Num: 38

Candidate Starts for Seagreen_6:

(Start: 38 @4409 has 53 MA's), (65, 4631), (72, 4700), (74, 4709), (82, 4811), (93, 4928),

Gene: SgtBeansprout_8 Start: 6589, Stop: 7137, Start Num: 36

Candidate Starts for SgtBeansprout_8:

(Start: 36 @6589 has 99 MA's), (76, 6904), (90, 7093), (92, 7111),

Gene: Shadow1_10 Start: 6145, Stop: 6711, Start Num: 37

Candidate Starts for Shadow1_10:

(Start: 37 @6145 has 52 MA's), (79, 6517), (93, 6694),

Gene: Shaobing_12 Start: 6376, Stop: 6936, Start Num: 36

Candidate Starts for Shaobing_12:

(32, 6370), (Start: 36 @6376 has 99 MA's), (60, 6532), (76, 6700), (92, 6910),

Gene: ShedlockHolmes_11 Start: 7290, Stop: 7874, Start Num: 34

Candidate Starts for ShedlockHolmes_11:

(Start: 34 @7290 has 3 MA's), (Start: 45 @7326 has 6 MA's), (71, 7602), (76, 7638), (93, 7857),

Gene: ShiaSurprise_12 Start: 7357, Stop: 7899, Start Num: 36

Candidate Starts for ShiaSurprise_12:

(Start: 36 @7357 has 99 MA's), (60, 7492), (76, 7660), (90, 7855), (92, 7873), (93, 7882),

Gene: SimranZ1_6 Start: 4408, Stop: 4944, Start Num: 38

Candidate Starts for SimranZ1_6:

(Start: 38 @4408 has 53 MA's), (65, 4630), (72, 4699), (74, 4708), (82, 4810), (93, 4927),

Gene: SirPhilip_11 Start: 6046, Stop: 6564, Start Num: 50

Candidate Starts for SirPhilip_11:

(Start: 50 @6046 has 1 MA's), (60, 6163), (91, 6529), (92, 6538), (93, 6547),

Gene: Slarp_13 Start: 8544, Stop: 9116, Start Num: 37

Candidate Starts for Slarp_13:

(Start: 37 @8544 has 52 MA's), (69, 8832), (76, 8877),

Gene: Slimphazie_12 Start: 7314, Stop: 7856, Start Num: 37

Candidate Starts for Slimphazie_12:

(13, 7131), (Start: 37 @7314 has 52 MA's), (60, 7449), (76, 7617), (90, 7812), (92, 7830), (93, 7839),

Gene: SoSeph_10 Start: 7501, Stop: 8010, Start Num: 44

Candidate Starts for SoSeph_10:

(Start: 19 @7381 has 4 MA's), (Start: 23 @7420 has 1 MA's), (Start: 35 @7465 has 5 MA's), (Start: 39 @7486 has 3 MA's), (Start: 44 @7501 has 10 MA's), (48, 7513), (76, 7786),

Gene: Soul22_6 Start: 4306, Stop: 4854, Start Num: 40

Candidate Starts for Soul22_6:

(2, 3883), (4, 4015), (6, 4039), (11, 4090), (16, 4126), (18, 4189), (Start: 40 @4306 has 10 MA's), (53, 4411), (56, 4435), (71, 4594), (88, 4759),

Gene: Sparky_5 Start: 4760, Stop: 5305, Start Num: 46

Candidate Starts for Sparky_5:

(Start: 46 @4760 has 2 MA's), (59, 4871), (60, 4880), (81, 5129), (85, 5165), (89, 5237),

Gene: Spikelee_6 Start: 4409, Stop: 4945, Start Num: 38

Candidate Starts for Spikelee_6:

(Start: 38 @4409 has 53 MA's), (65, 4631), (72, 4700), (74, 4709), (76, 4727), (82, 4811), (93, 4928),

Gene: Spock_12 Start: 7357, Stop: 7899, Start Num: 36

Candidate Starts for Spock_12:

(Start: 36 @7357 has 99 MA's), (60, 7492), (76, 7660), (90, 7855), (92, 7873), (93, 7882),

Gene: Spooky_6 Start: 4301, Stop: 4870, Start Num: 33

Candidate Starts for Spooky_6:

(Start: 33 @4301 has 3 MA's), (Start: 42 @4331 has 15 MA's), (58, 4472), (61, 4502), (67, 4589), (88, 4778),

Gene: Squiddly_7 Start: 4994, Stop: 5563, Start Num: 33

Candidate Starts for Squiddly_7:

(Start: 33 @4994 has 3 MA's), (Start: 42 @5024 has 15 MA's), (54, 5129), (58, 5165), (61, 5195), (84, 5420), (88, 5471),

Gene: Squirty_6 Start: 4407, Stop: 4943, Start Num: 38

Candidate Starts for Squirty_6:

(Start: 38 @4407 has 53 MA's), (65, 4629), (72, 4698), (74, 4707), (82, 4809), (93, 4926),

Gene: Stap_6 Start: 4408, Stop: 4944, Start Num: 38

Candidate Starts for Stap_6:

(Start: 38 @4408 has 53 MA's), (65, 4630), (72, 4699), (74, 4708), (82, 4810), (93, 4927),

Gene: Starcevich_6 Start: 4409, Stop: 4945, Start Num: 38

Candidate Starts for Starcevich_6:

(Start: 38 @4409 has 53 MA's), (65, 4631), (72, 4700), (74, 4709), (76, 4727), (82, 4811), (93, 4928),

Gene: Stinson_12 Start: 7285, Stop: 7827, Start Num: 36

Candidate Starts for Stinson_12:

(Start: 36 @7285 has 99 MA's), (60, 7420), (76, 7588), (92, 7801), (93, 7810),

Gene: Strobilo_8 Start: 5349, Stop: 5891, Start Num: 37

Candidate Starts for Strobilo_8:

(Start: 37 @5349 has 52 MA's), (73, 5652), (76, 5670), (92, 5865),

Gene: Sulley_12 Start: 7292, Stop: 7825, Start Num: 36

Candidate Starts for Sulley_12:

(Start: 36 @7292 has 99 MA's), (60, 7421), (92, 7799), (93, 7808),

Gene: Sunflower1121_10 Start: 6147, Stop: 6722, Start Num: 37

Candidate Starts for Sunflower1121_10:

(Start: 37 @6147 has 52 MA's), (76, 6489), (79, 6528), (93, 6705),

Gene: Syra333_11 Start: 6243, Stop: 6815, Start Num: 37

Candidate Starts for Syra333_11:

(Start: 37 @6243 has 52 MA's), (68, 6531), (76, 6582), (79, 6621), (92, 6789), (93, 6798),

Gene: TBond007_11 Start: 7077, Stop: 7625, Start Num: 45

Candidate Starts for TBond007_11:

(Start: 34 @7041 has 3 MA's), (Start: 45 @7077 has 6 MA's), (71, 7353), (76, 7389), (93, 7608),

Gene: TClif_11 Start: 6257, Stop: 6814, Start Num: 37

Candidate Starts for TClif_11:

(Start: 37 @6257 has 52 MA's), (Start: 45 @6290 has 6 MA's), (76, 6581), (93, 6797),

Gene: TM4_8 Start: 5384, Stop: 5944, Start Num: 31
Candidate Starts for TM4_8:
(Start: 31 @5384 has 1 MA's), (55, 5516), (73, 5702), (76, 5720), (92, 5918),

Gene: Tachez_12 Start: 7279, Stop: 7821, Start Num: 36
Candidate Starts for Tachez_12:
(Start: 36 @7279 has 99 MA's), (60, 7414), (76, 7582), (90, 7777), (92, 7795), (93, 7804),

Gene: TaiwanKao_12 Start: 7286, Stop: 7828, Start Num: 36
Candidate Starts for TaiwanKao_12:
(Start: 36 @7286 has 99 MA's), (60, 7421), (76, 7589), (90, 7784), (92, 7802), (93, 7811),

Gene: Taquito_11 Start: 8133, Stop: 8702, Start Num: 37
Candidate Starts for Taquito_11:
(Start: 37 @8133 has 52 MA's), (69, 8418), (76, 8463),

Gene: Thyatira_10 Start: 7374, Stop: 7883, Start Num: 44
Candidate Starts for Thyatira_10:
(Start: 19 @7254 has 4 MA's), (Start: 23 @7293 has 1 MA's), (Start: 35 @7338 has 5 MA's), (Start: 39 @7359 has 3 MA's), (Start: 44 @7374 has 10 MA's), (48, 7386), (76, 7659),

Gene: Tierra_11 Start: 6942, Stop: 7514, Start Num: 37
Candidate Starts for Tierra_11:
(10, 6744), (25, 6900), (Start: 37 @6942 has 52 MA's), (76, 7281), (79, 7320), (90, 7470), (92, 7488),

Gene: TingHuaYa_12 Start: 6338, Stop: 6886, Start Num: 35
Candidate Starts for TingHuaYa_12:
(Start: 35 @6338 has 5 MA's), (60, 6488), (76, 6656), (79, 6695), (90, 6842), (92, 6860), (93, 6869),

Gene: TiniBug_12 Start: 7263, Stop: 7805, Start Num: 36
Candidate Starts for TiniBug_12:
(Start: 36 @7263 has 99 MA's), (60, 7398), (76, 7566), (90, 7761), (92, 7779), (93, 7788),

Gene: Tiri_12 Start: 7324, Stop: 7866, Start Num: 36
Candidate Starts for Tiri_12:
(Start: 36 @7324 has 99 MA's), (60, 7459), (76, 7627), (90, 7822), (92, 7840), (93, 7849),

Gene: TootsiePop_6 Start: 4412, Stop: 4948, Start Num: 38
Candidate Starts for TootsiePop_6:
(Start: 38 @4412 has 53 MA's), (65, 4634), (72, 4703), (74, 4712), (76, 4730), (82, 4814), (93, 4931),

Gene: Tootsieroll_6 Start: 4408, Stop: 4944, Start Num: 38
Candidate Starts for Tootsieroll_6:
(Start: 38 @4408 has 53 MA's), (65, 4630), (72, 4699), (74, 4708), (82, 4810), (93, 4927),

Gene: Topper_12 Start: 7357, Stop: 7899, Start Num: 36
Candidate Starts for Topper_12:
(Start: 36 @7357 has 99 MA's), (60, 7492), (76, 7660), (90, 7855), (92, 7873), (93, 7882),

Gene: Torres_8 Start: 6589, Stop: 7137, Start Num: 36
Candidate Starts for Torres_8:
(Start: 36 @6589 has 99 MA's), (76, 6904), (90, 7093), (92, 7111),

Gene: Totinger_6 Start: 4409, Stop: 4945, Start Num: 38
Candidate Starts for Totinger_6:
(Start: 38 @4409 has 53 MA's), (65, 4631), (72, 4700), (74, 4709), (76, 4727), (82, 4811), (93, 4928),

Gene: TreyKay_12 Start: 7280, Stop: 7822, Start Num: 36
Candidate Starts for TreyKay_12:
(Start: 36 @7280 has 99 MA's), (60, 7415), (76, 7583), (90, 7778), (92, 7796), (93, 7805),

Gene: TribelTrouble_10 Start: 7121, Stop: 7663, Start Num: 45
Candidate Starts for TribelTrouble_10:
(15, 6923), (Start: 34 @7085 has 3 MA's), (Start: 45 @7121 has 6 MA's), (57, 7238),

Gene: TruffulaTree_12 Start: 7310, Stop: 7852, Start Num: 36
Candidate Starts for TruffulaTree_12:
(Start: 36 @7310 has 99 MA's), (60, 7445), (76, 7613), (90, 7808), (92, 7826), (93, 7835),

Gene: Twitch_12 Start: 7357, Stop: 7899, Start Num: 36
Candidate Starts for Twitch_12:
(Start: 36 @7357 has 99 MA's), (60, 7492), (76, 7660), (90, 7855), (92, 7873), (93, 7882),

Gene: UncleRicky_6 Start: 4408, Stop: 4944, Start Num: 38
Candidate Starts for UncleRicky_6:
(Start: 38 @4408 has 53 MA's), (65, 4630), (72, 4699), (74, 4708), (82, 4810), (93, 4927),

Gene: Unicorn_11 Start: 6278, Stop: 6850, Start Num: 37
Candidate Starts for Unicorn_11:
(10, 6080), (25, 6236), (Start: 37 @6278 has 52 MA's), (76, 6617), (79, 6656), (90, 6806), (92, 6824),

Gene: Urkel_12 Start: 7263, Stop: 7805, Start Num: 36
Candidate Starts for Urkel_12:
(Start: 36 @7263 has 99 MA's), (60, 7398), (76, 7566), (90, 7761), (92, 7779), (93, 7788),

Gene: Validus_12 Start: 6293, Stop: 6850, Start Num: 36
Candidate Starts for Validus_12:
(Start: 36 @6293 has 99 MA's), (60, 6446), (76, 6614), (92, 6824),

Gene: Veliki_12 Start: 7357, Stop: 7899, Start Num: 36
Candidate Starts for Veliki_12:
(Start: 36 @7357 has 99 MA's), (60, 7492), (76, 7660), (90, 7855), (92, 7873), (93, 7882),

Gene: Velveteen_6 Start: 4408, Stop: 4944, Start Num: 38
Candidate Starts for Velveteen_6:
(Start: 38 @4408 has 53 MA's), (65, 4630), (72, 4699), (74, 4708), (82, 4810), (93, 4927),

Gene: Waterfoul_10 Start: 7396, Stop: 7905, Start Num: 44
Candidate Starts for Waterfoul_10:
(Start: 19 @7276 has 4 MA's), (Start: 23 @7315 has 1 MA's), (Start: 35 @7360 has 5 MA's), (Start: 39 @7381 has 3 MA's), (Start: 44 @7396 has 10 MA's), (48, 7408), (76, 7681),

Gene: Whitney_6 Start: 4327, Stop: 4878, Start Num: 42
Candidate Starts for Whitney_6:
(Start: 42 @4327 has 15 MA's), (51, 4408), (58, 4480), (88, 4786),

Gene: Wintermute_13 Start: 8533, Stop: 9105, Start Num: 37

Candidate Starts for Wintermute_13:

(Start: 37 @8533 has 52 MA's), (69, 8821), (76, 8866),

Gene: Wrigley_5 Start: 4448, Stop: 5104, Start Num: 22

Candidate Starts for Wrigley_5:

(Start: 21 @4421 has 2 MA's), (Start: 22 @4448 has 15 MA's), (26, 4457), (30, 4481), (Start: 41 @4523 has 1 MA's), (Start: 42 @4526 has 15 MA's), (66, 4772),

Gene: Ximenita_12 Start: 6410, Stop: 6994, Start Num: 37

Candidate Starts for Ximenita_12:

(Start: 37 @6410 has 52 MA's), (65, 6659), (68, 6710), (76, 6761), (79, 6800), (93, 6977),

Gene: Y10_13 Start: 8533, Stop: 9105, Start Num: 37

Candidate Starts for Y10_13:

(Start: 37 @8533 has 52 MA's), (69, 8821), (76, 8866),

Gene: Y2_13 Start: 8533, Stop: 9105, Start Num: 37

Candidate Starts for Y2_13:

(Start: 37 @8533 has 52 MA's), (69, 8821), (76, 8866),

Gene: Yoshi_6 Start: 4306, Stop: 4854, Start Num: 40

Candidate Starts for Yoshi_6:

(2, 3883), (4, 4015), (11, 4090), (16, 4126), (18, 4189), (Start: 40 @4306 has 10 MA's), (53, 4411), (56, 4435), (71, 4594), (88, 4759),

Gene: YoureAdopted_11 Start: 7286, Stop: 7828, Start Num: 36

Candidate Starts for YoureAdopted_11:

(Start: 36 @7286 has 99 MA's), (60, 7421), (76, 7589), (90, 7784), (92, 7802), (93, 7811),

Gene: Yuna_12 Start: 6421, Stop: 6981, Start Num: 37

Candidate Starts for Yuna_12:

(Start: 37 @6421 has 52 MA's), (79, 6781), (92, 6955), (93, 6964),

Gene: Yunkel11_12 Start: 6279, Stop: 6812, Start Num: 36

Candidate Starts for Yunkel11_12:

(32, 6273), (Start: 36 @6279 has 99 MA's), (60, 6408), (76, 6576), (92, 6786), (93, 6795),

Gene: Zabiza_12 Start: 7313, Stop: 7855, Start Num: 36

Candidate Starts for Zabiza_12:

(Start: 36 @7313 has 99 MA's), (60, 7448), (76, 7616), (90, 7811), (92, 7829), (93, 7838),

Gene: Zapner_7 Start: 4831, Stop: 5379, Start Num: 40

Candidate Starts for Zapner_7:

(2, 4408), (4, 4540), (11, 4615), (16, 4651), (18, 4714), (Start: 40 @4831 has 10 MA's), (53, 4936), (56, 4960), (71, 5119), (88, 5284),

Gene: Zavala_12 Start: 7295, Stop: 7837, Start Num: 36

Candidate Starts for Zavala_12:

(Start: 36 @7295 has 99 MA's), (60, 7430), (76, 7598), (90, 7793), (92, 7811), (93, 7820),

Gene: ZoeJ_8 Start: 5306, Stop: 5842, Start Num: 37

Candidate Starts for ZoeJ_8:

(Start: 37 @5306 has 52 MA's), (73, 5603), (76, 5621), (92, 5816),