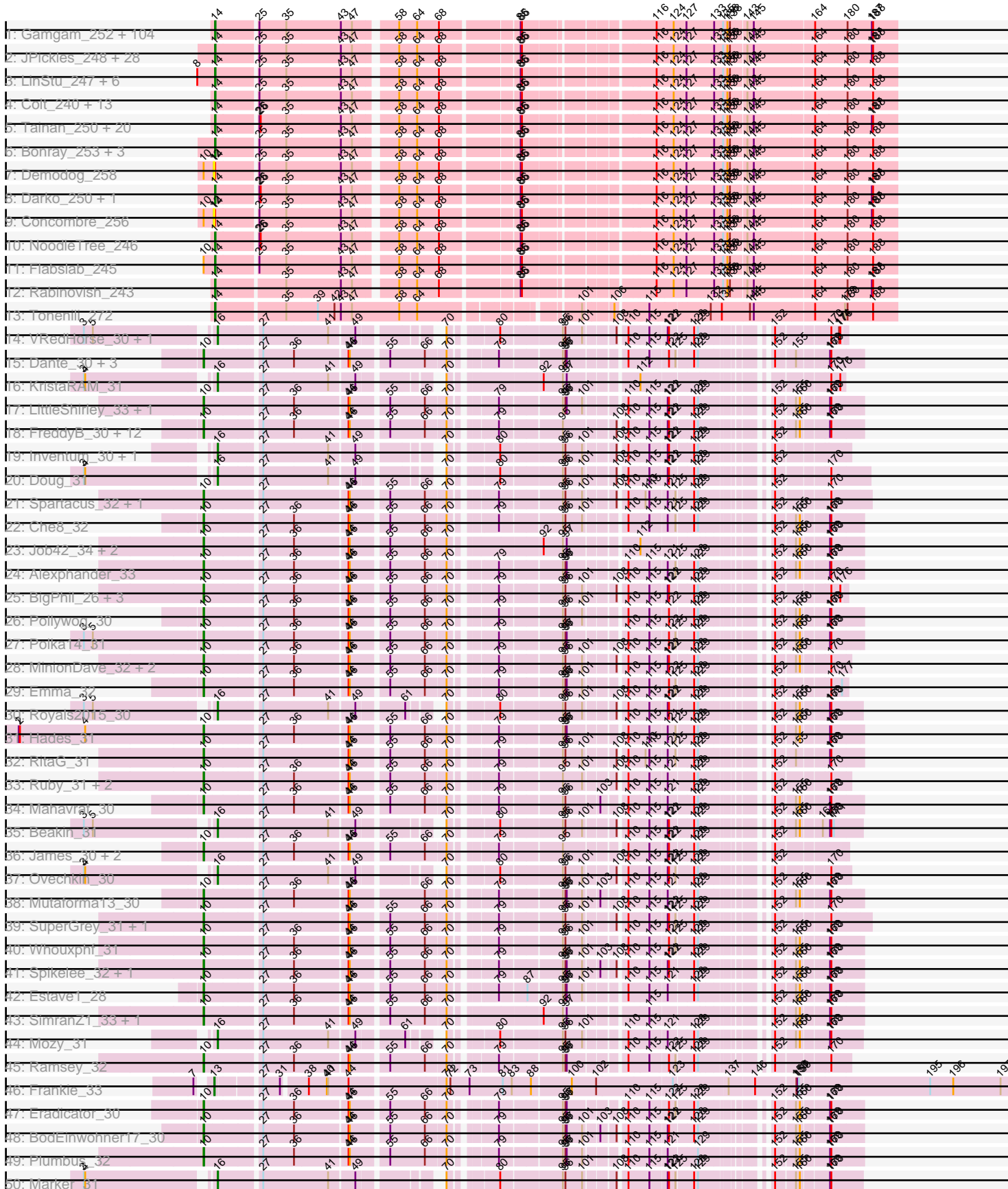
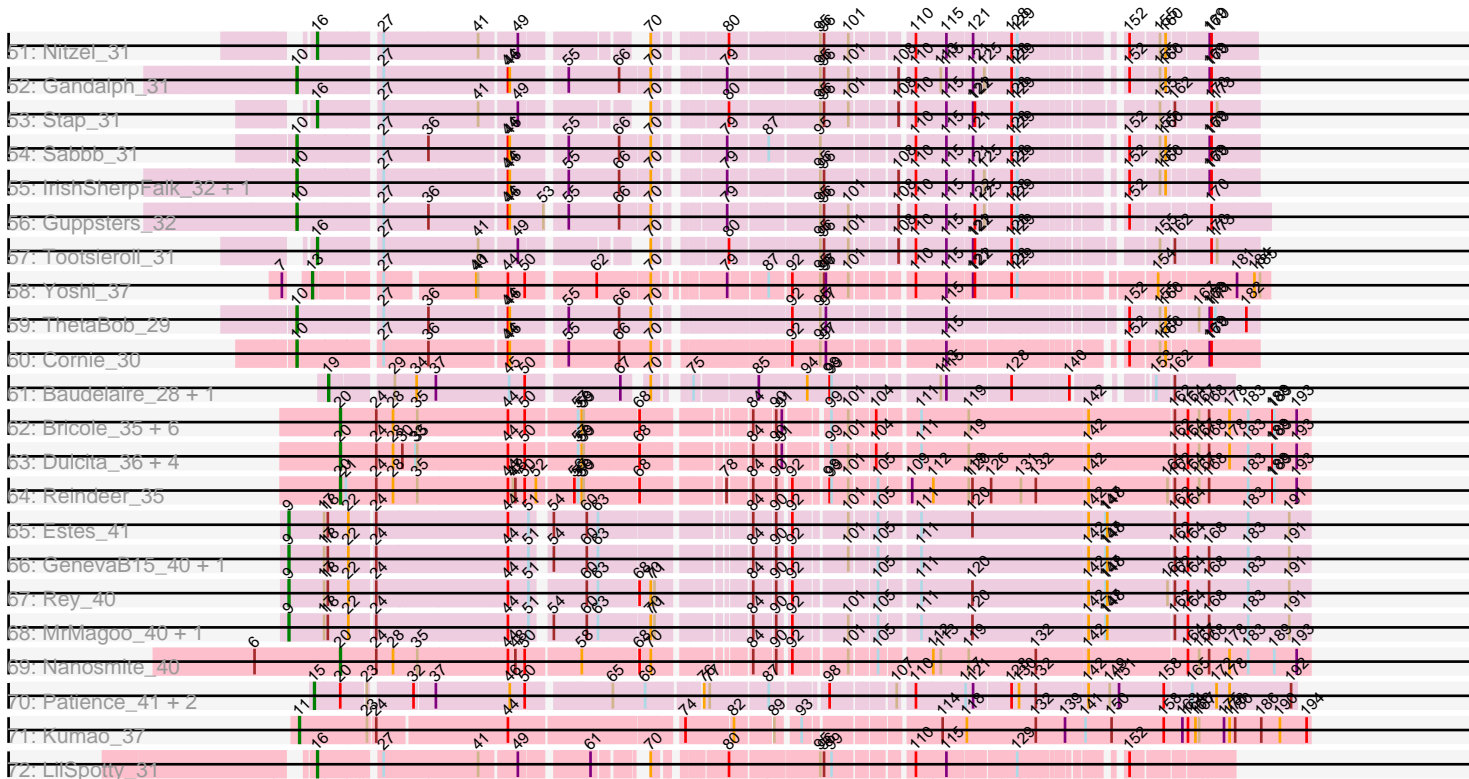


Pham 196237



Pham 196237



Note: Tracks are now grouped by subcluster and scaled. Switching in subcluster is indicated by changes in track color. Track scale is now set by default to display the region 30 bp upstream of start 1 to 30 bp downstream of the last possible start. If this default region is judged to be packed too tightly with annotated starts, the track will be further scaled to only show that region of the ORF with annotated starts. This action will be indicated by adding "Zoomed" to the title. For starts, yellow indicates the location of called starts comprised solely of Glimmer/GeneMark auto-annotations, green indicates the location of called starts with at least 1 manual gene annotation.

Pham 196237 Report

This analysis was run 12/09/24 on database version 580.

Pham number 196237 has 296 members, 18 are drafts.

Phages represented in each track:

- Track 1 : Gamgam_252, Grungle_232, BeanWater_243, YemiJoy2021_251, Pier_249, Pivoine_251, Ewok_249, DTDevon_251, Ghost_250, ScottMcG_242, Daffodil_256, Koguma_249, EmmaElysia_255, Drazdys_247, Breeniome_250, LRRHood_242, Melpomini_245, Loanshark_247, QBert_242, Delylah_252, Jedediah_252, Dietrick_239, Roots515_253, EasyJones_251, Grasshills_257, Momo_252, ParkTD_249, Catera_239, Cali_240, Izajani_246, Burrough_251, Sauce_247, Quasimodo_253, Shelob_251, Naija_251, Kboogie_254, Rahel_252, NedWong_249, LolaVinca_246, Phusco_249, Iota_247, Pio_257, Amataga_251, Atlantean_250, Audrick_253, Jaygup_247, Sprinklers_248, DrPhinkDaddy_247, ArcherS7_251, Turret_241, Shnickers_249, Derek_246, ChaylaJr_249, Capablanca_255, Tortoise16_248, Adlitam_250, ChickenPhender_246, MikeLiesIn_251, YoungMoneyMata_250, Zeenon_251, I3_260, Delilah_248, Spud_242, Napoleon13_247, Ngannou_245, Latch_250, Jemmno_250, DirtMonster_239, Fludd_250, Pleione_254, BigCity_258, JustHall_244, Gabriel_253, BackyardAgain_245, Babyland_253, ValleyTerrace_251, Spec_244, InigoMontoya_254, Chomp_249, Zalkecks_249, Tyke_247, SilverDipper_255, Phox_251, Bangla1971_251, NuevoMundo_252, Rizal_239, Bipolarisk_248, Caravan_240, Halldule_242, Bxz1_236, LifeSavor_251, Littleton_254, Norm_250, Megamind_247, Mangeria_250, Wally_248, Essence_248, ShiaLabeouf_248, EggyFarm_258, Matsumoto_248, JigglyPuff_256, Willis_251, Ava3_247, Phlegm_255, SmallFry_251
- Track 2 : JPickles_248, StubbySaigey_257, Blackbrain_249, Basquiat_248, TinyTim_249, Erdmann_252, Cactojaque_245, Gizmo_256, ZygoTaiga_247, Trinitium_247, Chargie21_248, Yucca_251, Bread_247, Astraea_246, Specks_255, Lee7_251, ErnieJ_244, EmToTheThree_251, FoxtrotP1_249, Morizzled23_248, Janiyra_254, Maby2021_251, Shrimp_253, FudgeTart_246, Salacia_252, SrishMeg2525_248, Teardrop_249, McGee_252, Ading_253
- Track 3 : LinStu_247, Stubby_233, Yassified_246, ET08_236, Ronan_246, Pinkcreek_230, Alice_236
- Track 4 : Colt_240, Blackdragon_245, Cane17_239, CharlieB_245, Jessibeth14_250, Blubba_237, Sebata_250, JayJay_246, JulietS_242, McWolfish_247, HyRo_235, Shaqnato_241, Shifa_226, Khaleesi_249
- Track 5 : Tainan_250, IkeLoa_244, Patter_252, StephanieG_244, LordLeafolot_252, Mikro_244, BadAgartude_244, Dandelion_256, MoMoMixon_246, Nappy_249, Kamryn_249, Bigswole_255, Nidhogg_251, Naval22_255, FrayBell_253, Domi_244, Guwapp_246, InterFolia_252, CindyLou_251, Lukilu_239, RoMag_245
- Track 6 : Bonray_253, Issimir_244, PurduePete_251, Asterius_247

- Track 7 : Demodog_258
- Track 8 : Darko_250, BananaFence_248
- Track 9 : Concombre_256
- Track 10 : NoodleTree_246
- Track 11 : Flabslab_245
- Track 12 : Rabinovish_243
- Track 13 : Tonenili_272
- Track 14 : VRedHorse_30, Cornucopia_31
- Track 15 : Dante_30, Empress_31, Sandalphon_31, OldBen_30
- Track 16 : KristaRAM_31
- Track 17 : LittleShirley_33, Rialto_34
- Track 18 : FreddyB_30, Saal_30, OlympiaSaint_30, DRBy19_30, Cabrinians_30, Spoonbill_30, Priscilla_30, Sparkdehlily_30, Gorge_30, Radiance_30, Philus_30, Totinger_31, TDanisky_30
- Track 19 : Inventum_30, Sassafras_30
- Track 20 : Doug_31
- Track 21 : Spartacus_32, Bubbles123_32
- Track 22 : Che8_32
- Track 23 : Job42_34, DosHalletts_32, Minnie_32
- Track 24 : Alexphander_33
- Track 25 : BigPhil_26, Cerasum_26, Velveteen_26, Sarma624_26
- Track 26 : Pollywog_30
- Track 27 : Polka14_31
- Track 28 : MinionDave_32, LunaBlu_32, Galactic_31
- Track 29 : Emma_32
- Track 30 : Royals2015_30
- Track 31 : Hades_31
- Track 32 : RitaG_31
- Track 33 : Ruby_31, MisterCuddles_31, Girr_31
- Track 34 : Mahavrat_30
- Track 35 : Beakin_31
- Track 36 : James_30, Mattes_30, BobaPhett_30
- Track 37 : Ovechkin_30
- Track 38 : Mutaforma13_30
- Track 39 : SuperGrey_31, Rita_31
- Track 40 : Whouxphf_31
- Track 41 : Spikelee_32, BuzzLyseyear_33
- Track 42 : Estave1_28
- Track 43 : SimranZ1_33, Boomer_32
- Track 44 : Mozy_31
- Track 45 : Ramsey_32
- Track 46 : Frankie_33
- Track 47 : Eradicator_30
- Track 48 : BodEinwohner17_30
- Track 49 : Plumbus_32
- Track 50 : Marker_31
- Track 51 : Nitzel_31
- Track 52 : Gandalph_31
- Track 53 : Stap_31
- Track 54 : Sabbb_31
- Track 55 : IrishSherpFalk_32, WillSterrel_32
- Track 56 : Guppsters_32
- Track 57 : Tootsieroll_31

- Track 58 : Yoshi_37
- Track 59 : ThetaBob_29
- Track 60 : Cornie_30
- Track 61 : Baudelaire_28, Aegeus_28
- Track 62 : Bricole_35, IPHane7_35, Skinny_36, Bongo_35, PegLeg_35, LilhomieP_34, TyDawg_35
- Track 63 : Dulcita_36, Auspice_35, Glaske16_36, SlimJimmy_34, Diminimus_36
- Track 64 : Reindeer_35
- Track 65 : Estes_41
- Track 66 : GenevaB15_40, Aziz_40
- Track 67 : Rey_40
- Track 68 : MrMagoo_40, GardenSalsa_40
- Track 69 : Nanosmite_40
- Track 70 : Patience_41, Labelle_40, Madrug_39
- Track 71 : Kumao_37
- Track 72 : LilSpotty_31

Summary of Final Annotations (See graph section above for start numbers):

The start number called the most often in the published annotations is 14, it was called in 170 of the 278 non-draft genes in the pham.

Genes that call this "Most Annotated" start:

- Ading_253, Adlitam_250, Alice_236, Amataga_251, ArcherS7_251, Asterius_247, Astraea_246, Atlantean_250, Audrick_253, Ava3_247, Babyland_253, BackyardAgain_245, BadAgartude_244, BananaFence_248, Bangla1971_251, Basquiat_248, BeanWater_243, BigCity_258, Bigswole_255, Bipolarisk_248, Blackbrain_249, Blackdragon_245, Blubba_237, Bonray_253, Bread_247, Breeniome_250, Burrough_251, Bxz1_236, Cactojaque_245, Cali_240, Cane17_239, Capablanca_255, Caravan_240, Catera_239, Chargie21_248, CharlieB_245, ChaylaJr_249, ChickenPhender_246, Chomp_249, CindyLou_251, Colt_240, DTDevon_251, Daffodil_256, Dandelion_256, Darko_250, Delilah_248, Delylah_252, Derek_246, Dietrick_239, DirtMonster_239, Domi_244, DrPhinkDaddy_247, Drazdys_247, ET08_236, EasyJones_251, EggyFarm_258, EmToTheThree_251, EmmaElysia_255, Erdmann_252, ErnieJ_244, Essence_248, Ewok_249, Flabslab_245, Fludd_250, FoxtrotP1_249, FrayBell_253, FudgeTart_246, Gabriel_253, Gamgam_252, Ghost_250, Gizmo_256, Grasshills_257, Grungle_232, Guwapp_246, Halldule_242, HyRo_235, I3_260, IkeLoa_244, InigoMontoya_254, InterFolia_252, Iota_247, Issimir_244, Izajani_246, JPickles_248, Janiyra_254, JayJay_246, Jaygup_247, Jediah_252, Jemmno_250, Jessibeth14_250, JigglyPuff_256, JulietS_242, JustHall_244, Kamryn_249, Kboogie_254, Khaleesi_249, Koguma_249, LRRHood_242, Latch_250, Lee7_251, LifeSavor_251, LinStu_247, Littleton_254, Loanshark_247, LolaVinca_246, LordLeafolot_252, Lukilu_239, Maby2021_251, Mangeria_250, Matsumoto_248, McGee_252, McWolfish_247, Megamind_247, Melpomini_245, MikeLiesIn_251, Mikro_244, MoMoMixon_246, Momo_252, Morizzled23_248, Naija_251, Napoleon13_247, Nappy_249, Naval22_255, NedWong_249, Ngannou_245, Nidhogg_251, NoodleTree_246, Norm_250, NuevoMundo_252, ParkTD_249, Patter_252, Phlegm_255, Phox_251, Phusco_249, Pier_249, Pinkcreek_230, Pio_257, Pivoine_251, Pleione_254, PurduePete_251, QBert_242, Quasimodo_253,

Rabinovish_243, Rahel_252, Rizal_239, RoMag_245, Ronan_246, Roots515_253, Salacia_252, Sauce_247, ScottMcG_242, Sebata_250, Shaqnato_241, Shelob_251, ShiaLabeouf_248, Shifa_226, Shnickers_249, Shrimp_253, SilverDipper_255, SmallFry_251, Spec_244, Specks_255, Sprinklers_248, Spud_242, SrishMeg2525_248, StephanieG_244, StubbySaigey_257, Stubby_233, Tainan_250, Teardrop_249, TinyTim_249, Tonenili_272, Tortoise16_248, Trinitium_247, Turret_241, Tyke_247, ValleyTerrace_251, Wally_248, Willis_251, Yassified_246, YemiJoy2021_251, YoungMoneyMata_250, Yucca_251, Zalkecks_249, Zeenon_251, ZygoTaiga_247,

Genes that have the "Most Annotated" start but do not call it:

- Concombre_256, Demodog_258,

Genes that do not have the "Most Annotated" start:

- Aegeus_28, Alexphander_33, Auspice_35, Aziz_40, Baudelaire_28, Beakin_31, BigPhil_26, BobaPhett_30, BodEinwohner17_30, Bongo_35, Boomer_32, Bricole_35, Bubbles123_32, BuzzLyseyear_33, Cabrinians_30, Cerasum_26, Che8_32, Cornie_30, Cornucopia_31, DRBy19_30, Dante_30, Diminimus_36, DosHalletts_32, Doug_31, Dulcita_36, Emma_32, Empress_31, Eradicator_30, Estave1_28, Estes_41, Frankie_33, FreddyB_30, Galactic_31, Gandalph_31, GardenSalsa_40, GenevaB15_40, Girr_31, Glaske16_36, Gorge_30, Guppsters_32, Hades_31, IPhane7_35, Inventum_30, IrishSherpFalk_32, James_30, Job42_34, KristaRAM_31, Kumao_37, Labelle_40, LilSpotty_31, LilhomieP_34, LittleShirley_33, LunaBlu_32, Madrug_39, Mahavrat_30, Marker_31, Mattes_30, MinionDave_32, Minnie_32, MisterCuddles_31, Mozy_31, MrMagoo_40, Mutaforma13_30, Nanosmite_40, Nitzel_31, OldBen_30, OlympiaSaint_30, Ovechkin_30, Patience_41, PegLeg_35, Philus_30, Plumbus_32, Polka14_31, Pollywog_30, Priscilla_30, Radiance_30, Ramsey_32, Reindeer_35, Rey_40, Rialto_34, RitaG_31, Rita_31, Royals2015_30, Ruby_31, Saal_30, Sabbb_31, Sandalphon_31, Sarma624_26, Sassafras_30, SimranZ1_33, Skinny_36, SlimJimmy_34, Sparkdehlily_30, Spartacus_32, Spikelee_32, Spoonbill_30, Stap_31, SuperGrey_31, TDanisky_30, ThetaBob_29, Tootsieroll_31, Totinger_31, TyDawg_35, VRedHorse_30, Velveteen_26, Whouphf_31, WillSterrel_32, Yoshi_37,

Summary by start number:

Start 9:

- Found in 6 of 296 (2.0%) of genes in pham
- Manual Annotations of this start: 6 of 278
- Called 100.0% of time when present
- Phage (with cluster) where this start called: Aziz_40 (M2), Estes_41 (M2), GardenSalsa_40 (M2), GenevaB15_40 (M2), MrMagoo_40 (M2), Rey_40 (M2),

Start 10:

- Found in 68 of 296 (23.0%) of genes in pham
- Manual Annotations of this start: 65 of 278
- Called 95.6% of time when present
- Phage (with cluster) where this start called: Alexphander_33 (F1), BigPhil_26 (F1), BobaPhett_30 (F1), BodEinwohner17_30 (F1), Boomer_32 (F1), Bubbles123_32 (F1), BuzzLyseyear_33 (F1), Cabrinians_30 (F1), Cerasum_26 (F1), Che8_32 (F1), Cornie_30 (F5), DRBy19_30 (F1), Dante_30 (F1), DosHalletts_32 (F1), Emma_32 (F1), Empress_31 (F1), Eradicator_30 (F1), Estave1_28 (F1), FreddyB_30 (F1), Galactic_31 (F1), Gandalph_31 (F1), Girr_31 (F1), Gorge_30 (F1), Guppsters_32

(F1), Hades_31 (F1), IrishSherpFalk_32 (F1), James_30 (F1), Job42_34 (F1), LittleShirley_33 (F1), LunaBlu_32 (F1), Mahavrat_30 (F1), Mattes_30 (F1), MinionDave_32 (F1), Minnie_32 (F1), MisterCuddles_31 (F1), Mutaforma13_30 (F1), OldBen_30 (F1), OlympiaSaint_30 (F1), Philus_30 (F1), Plumbus_32 (F1), Polka14_31 (F1), Pollywog_30 (F1), Priscilla_30 (F1), Radiance_30 (F1), Ramsey_32 (F1), Rialto_34 (F1), RitaG_31 (F1), Rita_31 (F1), Ruby_31 (F1), Saal_30 (F1), Sabbb_31 (F1), Sandalphon_31 (F1), Sarma624_26 (F1), SimranZ1_33 (F1), Sparkdehlily_30 (F1), Spartacus_32 (F1), Spikelee_32 (F1), Spoonbill_30 (F1), SuperGrey_31 (F1), TDanisky_30 (F1), ThetaBob_29 (F4), Totinger_31 (F1), Velveteen_26 (F1), Whouxphf_31 (F1), WillSterrel_32 (F1),

Start 11:

- Found in 1 of 296 (0.3%) of genes in pham
- Manual Annotations of this start: 1 of 278
- Called 100.0% of time when present
- Phage (with cluster) where this start called: Kumao_37 (singleton),

Start 12:

- Found in 2 of 296 (0.7%) of genes in pham
- No Manual Annotations of this start.
- Called 100.0% of time when present
- Phage (with cluster) where this start called: Concombre_256 (C1), Demodog_258 (C1),

Start 13:

- Found in 2 of 296 (0.7%) of genes in pham
- Manual Annotations of this start: 2 of 278
- Called 100.0% of time when present
- Phage (with cluster) where this start called: Frankie_33 (F1), Yoshi_37 (F2),

Start 14:

- Found in 188 of 296 (63.5%) of genes in pham
- Manual Annotations of this start: 170 of 278
- Called 98.9% of time when present
- Phage (with cluster) where this start called: Ading_253 (C1), Adlitam_250 (C1), Alice_236 (C1), Amataga_251 (C1), ArcherS7_251 (C1), Asterius_247 (C1), Astraea_246 (C1), Atlantean_250 (C1), Audrick_253 (C1), Ava3_247 (C1), Babyland_253 (C1), BackyardAgain_245 (C1), BadAgartude_244 (C1), BananaFence_248 (C1), Bangla1971_251 (C1), Basquiat_248 (C1), BeanWater_243 (C1), BigCity_258 (C1), Bigswole_255 (C1), Bipolarisk_248 (C1), Blackbrain_249 (C1), Blackdragon_245 (C1), Blubba_237 (C1), Bonray_253 (C1), Bread_247 (C1), Breeniome_250 (C1), Burrough_251 (C1), Bxz1_236 (C1), Cactojaque_245 (C1), Cali_240 (C1), Cane17_239 (C1), Capablanca_255 (C1), Caravan_240 (C1), Catera_239 (C1), Chargie21_248 (C1), CharlieB_245 (C1), ChaylaJr_249 (C1), ChickenPhender_246 (C1), Chomp_249 (C1), CindyLou_251 (C1), Colt_240 (C1), DTDevon_251 (C1), Daffodil_256 (C1), Dandelion_256 (C1), Darko_250 (C1), Delilah_248 (C1), Delylah_252 (C1), Derek_246 (C1), Dietrick_239 (C1), DirtMonster_239 (C1), Domi_244 (C1), DrPhinkDaddy_247 (C1), Drazdys_247 (C1), ET08_236 (C1), EasyJones_251 (C1), EggyFarm_258 (C1), EmToTheThree_251 (C1), EmmaElysia_255 (C1), Erdmann_252 (C1), ErnieJ_244 (C1), Essence_248 (C1), Ewok_249 (C1), Flabslab_245 (C1), Fludd_250 (C1), FoxtrotP1_249 (C1), FrayBell_253 (C1), FudgeTart_246 (C1), Gabriel_253 (C1), Gamgam_252 (C1), Ghost_250 (C1), Gizmo_256 (C1), Grasshills_257 (C1), Grungle_232 (C1),

Guwapp_246 (C1), Halldule_242 (C1), HyRo_235 (C1), I3_260 (C1), IkeLoa_244 (C1), InigoMontoya_254 (C1), InterFolia_252 (C1), Iota_247 (C1), Issimir_244 (C1), Izajani_246 (C1), JPickles_248 (C1), Janiyr_254 (C1), JayJay_246 (C1), Jaygup_247 (C1), Jedediah_252 (C1), Jemmno_250 (C1), Jessibeth14_250 (C1), JigglyPuff_256 (C1), JulietS_242 (C1), JustHall_244 (C1), Kamryn_249 (C1), Kboogie_254 (C1), Khaleesi_249 (C1), Koguma_249 (C1), LRRHood_242 (C1), Latch_250 (C1), Lee7_251 (C1), LifeSavor_251 (C1), LinStu_247 (C1), Littleton_254 (C1), Loanshark_247 (C1), LolaVinca_246 (C1), LordLeafolot_252 (C1), Lukilu_239 (C1), Maby2021_251 (C1), Mangeria_250 (C1), Matsumoto_248 (C1), McGee_252 (C1), McWolfish_247 (C1), Megamind_247 (C1), Melpomini_245 (C1), MikeLiesIn_251 (C1), Mikro_244 (C1), MoMoMixon_246 (C1), Momo_252 (C1), Morizzled23_248 (C1), Naija_251 (C1), Napoleon13_247 (C1), Nappy_249 (C1), Naval22_255 (C1), NedWong_249 (C1), Ngannou_245 (C1), Nidhogg_251 (C1), NoodleTree_246 (C1), Norm_250 (C1), NuevoMundo_252 (C1), ParkTD_249 (C1), Patter_252 (C1), Phlegm_255 (C1), Phox_251 (C1), Phusco_249 (C1), Pier_249 (C1), Pinkcreek_230 (C1), Pio_257 (C1), Pivoine_251 (C1), Pleione_254 (C1), PurduePete_251 (C1), QBert_242 (C1), Quasimodo_253 (C1), Rabinovish_243 (C1), Rahel_252 (C1), Rizal_239 (C1), RoMag_245 (C1), Ronan_246 (C1), Roots515_253 (C1), Salacia_252 (C1), Sauce_247 (C1), ScottMcG_242 (C1), Sebata_250 (C1), Shaqato_241 (C1), Shelob_251 (C1), ShiaLabeouf_248 (C1), Shifa_226 (C1), Shnickers_249 (C1), Shrimp_253 (C1), SilverDipper_255 (C1), SmallFry_251 (C1), Spec_244 (C1), Specks_255 (C1), Sprinklers_248 (C1), Spud_242 (C1), SrishMeg2525_248 (C1), StephanieG_244 (C1), StubbySaigey_257 (C1), Stubby_233 (C1), Tainan_250 (C1), Teardrop_249 (C1), TinyTim_249 (C1), Tonenili_272 (C1), Tortoise16_248 (C1), Trinitium_247 (C1), Turret_241 (C1), Tyke_247 (C1), ValleyTerrace_251 (C1), Wally_248 (C1), Willis_251 (C1), Yassified_246 (C1), YemiJoy2021_251 (C1), YoungMoneyMata_250 (C1), Yucca_251 (C1), Zalkecks_249 (C1), Zeenon_251 (C1), ZygoTaiga_247 (C1),

Start 15:

- Found in 3 of 296 (1.0%) of genes in pham
- Manual Annotations of this start: 3 of 278
- Called 100.0% of time when present
- Phage (with cluster) where this start called: Labelle_40 (U), Madruga_39 (U), Patience_41 (U),

Start 16:

- Found in 15 of 296 (5.1%) of genes in pham
- Manual Annotations of this start: 15 of 278
- Called 100.0% of time when present
- Phage (with cluster) where this start called: Beakin_31 (F1), Cornucopia_31 (F1), Doug_31 (F1), Inventum_30 (F1), KristaRAM_31 (F1), LilSpotty_31 (singleton), Marker_31 (F1), Mozy_31 (F1), Nitzel_31 (F1), Ovechkin_30 (F1), Royals2015_30 (F1), Sassafras_30 (F1), Stap_31 (F1), Tootsieroll_31 (F1), VRedHorse_30 (F1),

Start 19:

- Found in 2 of 296 (0.7%) of genes in pham
- Manual Annotations of this start: 2 of 278
- Called 100.0% of time when present
- Phage (with cluster) where this start called: Aegeus_28 (L5), Baudelaire_28 (L5),

Start 20:

- Found in 17 of 296 (5.7%) of genes in pham

- Manual Annotations of this start: 14 of 278
- Called 82.4% of time when present
- Phage (with cluster) where this start called: Auspice_35 (M1), Bongo_35 (M1), Bricole_35 (M1), Diminimus_36 (M1), Dulcita_36 (M1), Glaske16_36 (M1), IPhane7_35 (M1), LilhomieP_34 (M1), Nanosmite_40 (M3), PegLeg_35 (M1), Reindeer_35 (M1), Skinny_36 (M1), SlimJimmy_34 (M1), TyDawg_35 (M1),

Summary by clusters:

There are 11 clusters represented in this pham: F1, F2, F4, F5, singleton, L5, M1, M3, M2, U, C1,

Info for manual annotations of cluster C1:

- Start number 14 was manually annotated 170 times for cluster C1.

Info for manual annotations of cluster F1:

- Start number 10 was manually annotated 63 times for cluster F1.
- Start number 13 was manually annotated 1 time for cluster F1.
- Start number 16 was manually annotated 14 times for cluster F1.

Info for manual annotations of cluster F2:

- Start number 13 was manually annotated 1 time for cluster F2.

Info for manual annotations of cluster F4:

- Start number 10 was manually annotated 1 time for cluster F4.

Info for manual annotations of cluster F5:

- Start number 10 was manually annotated 1 time for cluster F5.

Info for manual annotations of cluster L5:

- Start number 19 was manually annotated 2 times for cluster L5.

Info for manual annotations of cluster M1:

- Start number 20 was manually annotated 13 times for cluster M1.

Info for manual annotations of cluster M2:

- Start number 9 was manually annotated 6 times for cluster M2.

Info for manual annotations of cluster M3:

- Start number 20 was manually annotated 1 time for cluster M3.

Info for manual annotations of cluster U:

- Start number 15 was manually annotated 3 times for cluster U.

Gene Information:

Gene: Ading_253 Start: 144805, Stop: 146235, Start Num: 14

Candidate Starts for Ading_253:

(Start: 14 @144805 has 170 MA's), (25, 144895), (35, 144958), (43, 145081), (47, 145105), (58, 145189), (64, 145231), (68, 145273), (85, 145438), (86, 145441), (116, 145696), (124, 145735), (127, 145765), (133, 145828), (135, 145849), (136, 145858), (138, 145861), (143, 145894), (145, 145909),

(164, 146044), (180, 146119), (187, 146176), (188, 146179),

Gene: Adlitam_250 Start: 142960, Stop: 144390, Start Num: 14

Candidate Starts for Adlitam_250:

(Start: 14 @142960 has 170 MA's), (25, 143050), (35, 143113), (43, 143236), (47, 143260), (58, 143344), (64, 143386), (68, 143428), (85, 143593), (86, 143596), (116, 143851), (124, 143890), (127, 143920), (133, 143983), (135, 144004), (136, 144013), (138, 144016), (143, 144049), (145, 144064), (164, 144199), (180, 144274), (187, 144331), (188, 144334),

Gene: Aegeus_28 Start: 24440, Stop: 25621, Start Num: 19

Candidate Starts for Aegeus_28:

(Start: 19 @24440 has 2 MA's), (29, 24524), (34, 24557), (37, 24587), (45, 24701), (50, 24725), (67, 24854), (70, 24881), (75, 24914), (85, 25004), (94, 25082), (98, 25118), (99, 25121), (113, 25262), (115, 25268), (128, 25358), (140, 25433), (153, 25511), (162, 25535),

Gene: Alexphander_33 Start: 27007, Stop: 28281, Start Num: 10

Candidate Starts for Alexphander_33:

(Start: 10 @27007 has 65 MA's), (27, 27127), (36, 27199), (44, 27316), (46, 27319), (55, 27397), (66, 27478), (70, 27520), (79, 27598), (95, 27724), (96, 27730), (97, 27733), (110, 27844), (115, 27886), (121, 27922), (125, 27940), (128, 27976), (129, 27985), (152, 28099), (155, 28141), (160, 28150), (169, 28207), (170, 28210),

Gene: Alice_236 Start: 140036, Stop: 141466, Start Num: 14

Candidate Starts for Alice_236:

(8, 139994), (Start: 14 @140036 has 170 MA's), (25, 140126), (35, 140189), (43, 140312), (47, 140336), (58, 140420), (64, 140462), (68, 140504), (85, 140669), (86, 140672), (116, 140927), (124, 140966), (127, 140996), (133, 141059), (135, 141080), (136, 141089), (138, 141092), (143, 141125), (145, 141140), (164, 141275), (180, 141350), (188, 141410),

Gene: Amataga_251 Start: 141959, Stop: 143389, Start Num: 14

Candidate Starts for Amataga_251:

(Start: 14 @141959 has 170 MA's), (25, 142049), (35, 142112), (43, 142235), (47, 142259), (58, 142343), (64, 142385), (68, 142427), (85, 142592), (86, 142595), (116, 142850), (124, 142889), (127, 142919), (133, 142982), (135, 143003), (136, 143012), (138, 143015), (143, 143048), (145, 143063), (164, 143198), (180, 143273), (187, 143330), (188, 143333),

Gene: ArcherS7_251 Start: 143704, Stop: 145134, Start Num: 14

Candidate Starts for ArcherS7_251:

(Start: 14 @143704 has 170 MA's), (25, 143794), (35, 143857), (43, 143980), (47, 144004), (58, 144088), (64, 144130), (68, 144172), (85, 144337), (86, 144340), (116, 144595), (124, 144634), (127, 144664), (133, 144727), (135, 144748), (136, 144757), (138, 144760), (143, 144793), (145, 144808), (164, 144943), (180, 145018), (187, 145075), (188, 145078),

Gene: Asterius_247 Start: 142817, Stop: 144247, Start Num: 14

Candidate Starts for Asterius_247:

(Start: 14 @142817 has 170 MA's), (25, 142907), (35, 142970), (43, 143093), (47, 143117), (58, 143201), (64, 143243), (68, 143285), (85, 143450), (86, 143453), (116, 143708), (124, 143747), (127, 143777), (133, 143840), (135, 143861), (136, 143870), (138, 143873), (143, 143906), (145, 143921), (164, 144056), (180, 144131), (188, 144191),

Gene: Astraea_246 Start: 142012, Stop: 143442, Start Num: 14

Candidate Starts for Astraea_246:

(Start: 14 @142012 has 170 MA's), (25, 142102), (35, 142165), (43, 142288), (47, 142312), (58, 142396), (64, 142438), (68, 142480), (85, 142645), (86, 142648), (116, 142903), (124, 142942), (127, 142972), (133, 143035), (135, 143056), (136, 143065), (138, 143068), (143, 143101), (145, 143116), (164, 143251), (180, 143326), (187, 143383), (188, 143386),

Gene: Atlantean_250 Start: 141959, Stop: 143389, Start Num: 14

Candidate Starts for Atlantean_250:

(Start: 14 @141959 has 170 MA's), (25, 142049), (35, 142112), (43, 142235), (47, 142259), (58, 142343), (64, 142385), (68, 142427), (85, 142592), (86, 142595), (116, 142850), (124, 142889), (127, 142919), (133, 142982), (135, 143003), (136, 143012), (138, 143015), (143, 143048), (145, 143063), (164, 143198), (180, 143273), (187, 143330), (188, 143333),

Gene: Audrick_253 Start: 141849, Stop: 143279, Start Num: 14

Candidate Starts for Audrick_253:

(Start: 14 @141849 has 170 MA's), (25, 141939), (35, 142002), (43, 142125), (47, 142149), (58, 142233), (64, 142275), (68, 142317), (85, 142482), (86, 142485), (116, 142740), (124, 142779), (127, 142809), (133, 142872), (135, 142893), (136, 142902), (138, 142905), (143, 142938), (145, 142953), (164, 143088), (180, 143163), (187, 143220), (188, 143223),

Gene: Auspice_35 Start: 29799, Stop: 31166, Start Num: 20

Candidate Starts for Auspice_35:

(Start: 20 @29799 has 14 MA's), (24, 29856), (28, 29883), (30, 29898), (33, 29919), (35, 29922), (44, 30060), (50, 30084), (57, 30162), (58, 30168), (59, 30171), (68, 30246), (84, 30378), (90, 30405), (91, 30414), (99, 30468), (101, 30495), (104, 30525), (111, 30579), (119, 30651), (142, 30837), (162, 30957), (164, 30978), (167, 30996), (168, 31011), (178, 31041), (183, 31071), (188, 31107), (189, 31110), (193, 31146),

Gene: Ava3_247 Start: 142419, Stop: 143849, Start Num: 14

Candidate Starts for Ava3_247:

(Start: 14 @142419 has 170 MA's), (25, 142509), (35, 142572), (43, 142695), (47, 142719), (58, 142803), (64, 142845), (68, 142887), (85, 143052), (86, 143055), (116, 143310), (124, 143349), (127, 143379), (133, 143442), (135, 143463), (136, 143472), (138, 143475), (143, 143508), (145, 143523), (164, 143658), (180, 143733), (187, 143790), (188, 143793),

Gene: Aziz_40 Start: 30943, Stop: 32358, Start Num: 9

Candidate Starts for Aziz_40:

(Start: 9 @30943 has 6 MA's), (17, 30997), (18, 31003), (22, 31033), (24, 31069), (44, 31270), (51, 31300), (54, 31318), (60, 31369), (63, 31384), (84, 31573), (90, 31600), (92, 31615), (101, 31690), (105, 31723), (111, 31774), (142, 32029), (147, 32053), (148, 32056), (162, 32149), (164, 32170), (168, 32203), (183, 32263), (191, 32326),

Gene: Babyland_253 Start: 142736, Stop: 144166, Start Num: 14

Candidate Starts for Babyland_253:

(Start: 14 @142736 has 170 MA's), (25, 142826), (35, 142889), (43, 143012), (47, 143036), (58, 143120), (64, 143162), (68, 143204), (85, 143369), (86, 143372), (116, 143627), (124, 143666), (127, 143696), (133, 143759), (135, 143780), (136, 143789), (138, 143792), (143, 143825), (145, 143840), (164, 143975), (180, 144050), (187, 144107), (188, 144110),

Gene: BackyardAgain_245 Start: 140109, Stop: 141539, Start Num: 14

Candidate Starts for BackyardAgain_245:

(Start: 14 @140109 has 170 MA's), (25, 140199), (35, 140262), (43, 140385), (47, 140409), (58, 140493), (64, 140535), (68, 140577), (85, 140742), (86, 140745), (116, 141000), (124, 141039), (127, 141069), (133, 141132), (135, 141153), (136, 141162), (138, 141165), (143, 141198), (145, 141213),

(164, 141348), (180, 141423), (187, 141480), (188, 141483),

Gene: BadAgartude_244 Start: 142021, Stop: 143451, Start Num: 14

Candidate Starts for BadAgartude_244:

(Start: 14 @142021 has 170 MA's), (25, 142111), (26, 142114), (35, 142174), (43, 142297), (47, 142321), (58, 142405), (64, 142447), (68, 142489), (85, 142654), (86, 142657), (116, 142912), (124, 142951), (127, 142981), (133, 143044), (135, 143065), (136, 143074), (138, 143077), (143, 143110), (145, 143125), (164, 143260), (180, 143335), (187, 143392), (188, 143395),

Gene: BananaFence_248 Start: 142641, Stop: 144071, Start Num: 14

Candidate Starts for BananaFence_248:

(Start: 14 @142641 has 170 MA's), (25, 142731), (26, 142734), (35, 142794), (43, 142917), (47, 142941), (58, 143025), (64, 143067), (68, 143109), (85, 143274), (86, 143277), (116, 143532), (124, 143571), (127, 143601), (133, 143664), (135, 143685), (136, 143694), (138, 143697), (143, 143730), (145, 143745), (164, 143880), (180, 143955), (187, 144012), (188, 144015),

Gene: Bangla1971_251 Start: 142668, Stop: 144098, Start Num: 14

Candidate Starts for Bangla1971_251:

(Start: 14 @142668 has 170 MA's), (25, 142758), (35, 142821), (43, 142944), (47, 142968), (58, 143052), (64, 143094), (68, 143136), (85, 143301), (86, 143304), (116, 143559), (124, 143598), (127, 143628), (133, 143691), (135, 143712), (136, 143721), (138, 143724), (143, 143757), (145, 143772), (164, 143907), (180, 143982), (187, 144039), (188, 144042),

Gene: Basquiat_248 Start: 140927, Stop: 142357, Start Num: 14

Candidate Starts for Basquiat_248:

(Start: 14 @140927 has 170 MA's), (25, 141017), (35, 141080), (43, 141203), (47, 141227), (58, 141311), (64, 141353), (68, 141395), (85, 141560), (86, 141563), (116, 141818), (124, 141857), (127, 141887), (133, 141950), (135, 141971), (136, 141980), (138, 141983), (143, 142016), (145, 142031), (164, 142166), (180, 142241), (187, 142298), (188, 142301),

Gene: Baudelaire_28 Start: 24440, Stop: 25621, Start Num: 19

Candidate Starts for Baudelaire_28:

(Start: 19 @24440 has 2 MA's), (29, 24524), (34, 24557), (37, 24587), (45, 24701), (50, 24725), (67, 24854), (70, 24881), (75, 24914), (85, 25004), (94, 25082), (98, 25118), (99, 25121), (113, 25262), (115, 25268), (128, 25358), (140, 25433), (153, 25511), (162, 25535),

Gene: Beakin_31 Start: 26224, Stop: 27414, Start Num: 16

Candidate Starts for Beakin_31:

(3, 25951), (5, 25972), (Start: 16 @26224 has 15 MA's), (27, 26308), (41, 26458), (49, 26512), (70, 26653), (80, 26731), (95, 26857), (96, 26863), (101, 26902), (108, 26962), (110, 26977), (115, 27019), (121, 27055), (122, 27058), (128, 27109), (129, 27118), (152, 27232), (155, 27274), (160, 27283), (167, 27325), (169, 27340), (170, 27343), (171, 27349),

Gene: BeanWater_243 Start: 141804, Stop: 143234, Start Num: 14

Candidate Starts for BeanWater_243:

(Start: 14 @141804 has 170 MA's), (25, 141894), (35, 141957), (43, 142080), (47, 142104), (58, 142188), (64, 142230), (68, 142272), (85, 142437), (86, 142440), (116, 142695), (124, 142734), (127, 142764), (133, 142827), (135, 142848), (136, 142857), (138, 142860), (143, 142893), (145, 142908), (164, 143043), (180, 143118), (187, 143175), (188, 143178),

Gene: BigCity_258 Start: 144559, Stop: 145989, Start Num: 14

Candidate Starts for BigCity_258:

(Start: 14 @144559 has 170 MA's), (25, 144649), (35, 144712), (43, 144835), (47, 144859), (58, 144943), (64, 144985), (68, 145027), (85, 145192), (86, 145195), (116, 145450), (124, 145489), (127, 145519), (133, 145582), (135, 145603), (136, 145612), (138, 145615), (143, 145648), (145, 145663), (164, 145798), (180, 145873), (187, 145930), (188, 145933),

Gene: BigPhil_26 Start: 22498, Stop: 23733, Start Num: 10

Candidate Starts for BigPhil_26:

(Start: 10 @22498 has 65 MA's), (27, 22618), (36, 22690), (44, 22807), (46, 22810), (55, 22888), (66, 22969), (70, 23011), (79, 23089), (95, 23215), (96, 23221), (101, 23260), (108, 23320), (110, 23335), (115, 23377), (121, 23413), (122, 23416), (128, 23467), (129, 23476), (152, 23590), (170, 23701), (176, 23722),

Gene: Bigswole_255 Start: 144470, Stop: 145900, Start Num: 14

Candidate Starts for Bigswole_255:

(Start: 14 @144470 has 170 MA's), (25, 144560), (26, 144563), (35, 144623), (43, 144746), (47, 144770), (58, 144854), (64, 144896), (68, 144938), (85, 145103), (86, 145106), (116, 145361), (124, 145400), (127, 145430), (133, 145493), (135, 145514), (136, 145523), (138, 145526), (143, 145559), (145, 145574), (164, 145709), (180, 145784), (187, 145841), (188, 145844),

Gene: Bipolarisk_248 Start: 142687, Stop: 144117, Start Num: 14

Candidate Starts for Bipolarisk_248:

(Start: 14 @142687 has 170 MA's), (25, 142777), (35, 142840), (43, 142963), (47, 142987), (58, 143071), (64, 143113), (68, 143155), (85, 143320), (86, 143323), (116, 143578), (124, 143617), (127, 143647), (133, 143710), (135, 143731), (136, 143740), (138, 143743), (143, 143776), (145, 143791), (164, 143926), (180, 144001), (187, 144058), (188, 144061),

Gene: Blackbrain_249 Start: 142704, Stop: 144134, Start Num: 14

Candidate Starts for Blackbrain_249:

(Start: 14 @142704 has 170 MA's), (25, 142794), (35, 142857), (43, 142980), (47, 143004), (58, 143088), (64, 143130), (68, 143172), (85, 143337), (86, 143340), (116, 143595), (124, 143634), (127, 143664), (133, 143727), (135, 143748), (136, 143757), (138, 143760), (143, 143793), (145, 143808), (164, 143943), (180, 144018), (187, 144075), (188, 144078),

Gene: Blackdragon_245 Start: 142252, Stop: 143682, Start Num: 14

Candidate Starts for Blackdragon_245:

(Start: 14 @142252 has 170 MA's), (25, 142342), (35, 142405), (43, 142528), (47, 142552), (58, 142636), (64, 142678), (68, 142720), (85, 142885), (86, 142888), (116, 143143), (124, 143182), (127, 143212), (133, 143275), (135, 143296), (136, 143305), (138, 143308), (143, 143341), (145, 143356), (164, 143491), (180, 143566), (188, 143626),

Gene: Blubba_237 Start: 145431, Stop: 146861, Start Num: 14

Candidate Starts for Blubba_237:

(Start: 14 @145431 has 170 MA's), (25, 145521), (35, 145584), (43, 145707), (47, 145731), (58, 145815), (64, 145857), (68, 145899), (85, 146064), (86, 146067), (116, 146322), (124, 146361), (127, 146391), (133, 146454), (135, 146475), (136, 146484), (138, 146487), (143, 146520), (145, 146535), (164, 146670), (180, 146745), (188, 146805),

Gene: BobaPhett_30 Start: 26476, Stop: 27711, Start Num: 10

Candidate Starts for BobaPhett_30:

(Start: 10 @26476 has 65 MA's), (27, 26593), (36, 26665), (44, 26782), (46, 26785), (55, 26863), (66, 26944), (70, 26986), (79, 27064), (95, 27190), (110, 27310), (115, 27352), (121, 27388), (122, 27391), (128, 27442), (129, 27451), (152, 27565),

Gene: BodEinwohner17_30 Start: 26635, Stop: 27906, Start Num: 10

Candidate Starts for BodEinwohner17_30:

(Start: 10 @26635 has 65 MA's), (27, 26752), (36, 26824), (44, 26941), (46, 26944), (55, 27022), (66, 27103), (70, 27145), (79, 27223), (95, 27349), (96, 27355), (97, 27358), (101, 27394), (103, 27424), (108, 27454), (110, 27469), (115, 27511), (121, 27547), (122, 27550), (128, 27601), (129, 27610), (152, 27724), (155, 27766), (160, 27775), (169, 27832), (170, 27835),

Gene: Bongo_35 Start: 29799, Stop: 31166, Start Num: 20

Candidate Starts for Bongo_35:

(Start: 20 @29799 has 14 MA's), (24, 29856), (28, 29883), (35, 29922), (44, 30060), (50, 30084), (57, 30162), (58, 30168), (59, 30171), (68, 30246), (84, 30378), (90, 30405), (91, 30414), (99, 30468), (101, 30495), (104, 30525), (111, 30579), (119, 30651), (142, 30837), (162, 30957), (164, 30978), (167, 30996), (168, 31011), (178, 31041), (183, 31071), (188, 31107), (189, 31110), (193, 31146),

Gene: Bonray_253 Start: 144504, Stop: 145934, Start Num: 14

Candidate Starts for Bonray_253:

(Start: 14 @144504 has 170 MA's), (25, 144594), (35, 144657), (43, 144780), (47, 144804), (58, 144888), (64, 144930), (68, 144972), (85, 145137), (86, 145140), (116, 145395), (124, 145434), (127, 145464), (133, 145527), (135, 145548), (136, 145557), (138, 145560), (143, 145593), (145, 145608), (164, 145743), (180, 145818), (188, 145878),

Gene: Boomer_32 Start: 26275, Stop: 27576, Start Num: 10

Candidate Starts for Boomer_32:

(Start: 10 @26275 has 65 MA's), (27, 26395), (36, 26467), (44, 26584), (46, 26587), (55, 26665), (66, 26746), (70, 26797), (92, 26974), (95, 27016), (97, 27025), (115, 27181), (152, 27394), (155, 27436), (160, 27445), (169, 27502), (170, 27505),

Gene: Bread_247 Start: 142471, Stop: 143901, Start Num: 14

Candidate Starts for Bread_247:

(Start: 14 @142471 has 170 MA's), (25, 142561), (35, 142624), (43, 142747), (47, 142771), (58, 142855), (64, 142897), (68, 142939), (85, 143104), (86, 143107), (116, 143362), (124, 143401), (127, 143431), (133, 143494), (135, 143515), (136, 143524), (138, 143527), (143, 143560), (145, 143575), (164, 143710), (180, 143785), (187, 143842), (188, 143845),

Gene: Breeniome_250 Start: 141459, Stop: 142889, Start Num: 14

Candidate Starts for Breeniome_250:

(Start: 14 @141459 has 170 MA's), (25, 141549), (35, 141612), (43, 141735), (47, 141759), (58, 141843), (64, 141885), (68, 141927), (85, 142092), (86, 142095), (116, 142350), (124, 142389), (127, 142419), (133, 142482), (135, 142503), (136, 142512), (138, 142515), (143, 142548), (145, 142563), (164, 142698), (180, 142773), (187, 142830), (188, 142833),

Gene: Bricole_35 Start: 29785, Stop: 31152, Start Num: 20

Candidate Starts for Bricole_35:

(Start: 20 @29785 has 14 MA's), (24, 29842), (28, 29869), (35, 29908), (44, 30046), (50, 30070), (57, 30148), (58, 30154), (59, 30157), (68, 30232), (84, 30364), (90, 30391), (91, 30400), (99, 30454), (101, 30481), (104, 30511), (111, 30565), (119, 30637), (142, 30823), (162, 30943), (164, 30964), (167, 30982), (168, 30997), (178, 31027), (183, 31057), (188, 31093), (189, 31096), (193, 31132),

Gene: Bubbles123_32 Start: 27209, Stop: 28501, Start Num: 10

Candidate Starts for Bubbles123_32:

(Start: 10 @27209 has 65 MA's), (27, 27329), (44, 27518), (46, 27521), (55, 27599), (66, 27680), (70, 27722), (79, 27800), (95, 27926), (96, 27932), (101, 27971), (108, 28031), (110, 28046), (113, 28082), (115, 28088), (121, 28124), (125, 28142), (128, 28178), (129, 28187), (152, 28301), (170, 28412),

Gene: Burrough_251 Start: 143832, Stop: 145262, Start Num: 14

Candidate Starts for Burrough_251:

(Start: 14 @143832 has 170 MA's), (25, 143922), (35, 143985), (43, 144108), (47, 144132), (58, 144216), (64, 144258), (68, 144300), (85, 144465), (86, 144468), (116, 144723), (124, 144762), (127, 144792), (133, 144855), (135, 144876), (136, 144885), (138, 144888), (143, 144921), (145, 144936), (164, 145071), (180, 145146), (187, 145203), (188, 145206),

Gene: BuzzLyseyear_33 Start: 27038, Stop: 28312, Start Num: 10

Candidate Starts for BuzzLyseyear_33:

(Start: 10 @27038 has 65 MA's), (27, 27158), (36, 27230), (44, 27347), (46, 27350), (55, 27428), (66, 27509), (70, 27551), (79, 27629), (95, 27755), (96, 27761), (97, 27764), (101, 27800), (103, 27830), (108, 27860), (110, 27875), (115, 27917), (121, 27953), (122, 27956), (128, 28007), (129, 28016), (152, 28130), (155, 28172), (160, 28181), (169, 28238), (170, 28241),

Gene: Bxz1_236 Start: 144036, Stop: 145466, Start Num: 14

Candidate Starts for Bxz1_236:

(Start: 14 @144036 has 170 MA's), (25, 144126), (35, 144189), (43, 144312), (47, 144336), (58, 144420), (64, 144462), (68, 144504), (85, 144669), (86, 144672), (116, 144927), (124, 144966), (127, 144996), (133, 145059), (135, 145080), (136, 145089), (138, 145092), (143, 145125), (145, 145140), (164, 145275), (180, 145350), (187, 145407), (188, 145410),

Gene: Cabrinians_30 Start: 26504, Stop: 27775, Start Num: 10

Candidate Starts for Cabrinians_30:

(Start: 10 @26504 has 65 MA's), (27, 26621), (36, 26693), (44, 26810), (46, 26813), (55, 26891), (66, 26972), (70, 27014), (79, 27092), (95, 27218), (108, 27323), (110, 27338), (115, 27380), (121, 27416), (122, 27419), (128, 27470), (129, 27479), (152, 27593), (155, 27635), (160, 27644), (169, 27701), (170, 27704),

Gene: Cactojaque_245 Start: 141650, Stop: 143080, Start Num: 14

Candidate Starts for Cactojaque_245:

(Start: 14 @141650 has 170 MA's), (25, 141740), (35, 141803), (43, 141926), (47, 141950), (58, 142034), (64, 142076), (68, 142118), (85, 142283), (86, 142286), (116, 142541), (124, 142580), (127, 142610), (133, 142673), (135, 142694), (136, 142703), (138, 142706), (143, 142739), (145, 142754), (164, 142889), (180, 142964), (187, 143021), (188, 143024),

Gene: Cali_240 Start: 142429, Stop: 143859, Start Num: 14

Candidate Starts for Cali_240:

(Start: 14 @142429 has 170 MA's), (25, 142519), (35, 142582), (43, 142705), (47, 142729), (58, 142813), (64, 142855), (68, 142897), (85, 143062), (86, 143065), (116, 143320), (124, 143359), (127, 143389), (133, 143452), (135, 143473), (136, 143482), (138, 143485), (143, 143518), (145, 143533), (164, 143668), (180, 143743), (187, 143800), (188, 143803),

Gene: Cane17_239 Start: 145840, Stop: 147270, Start Num: 14

Candidate Starts for Cane17_239:

(Start: 14 @145840 has 170 MA's), (25, 145930), (35, 145993), (43, 146116), (47, 146140), (58, 146224), (64, 146266), (68, 146308), (85, 146473), (86, 146476), (116, 146731), (124, 146770), (127, 146800), (133, 146863), (135, 146884), (136, 146893), (138, 146896), (143, 146929), (145, 146944), (164, 147079), (180, 147154), (188, 147214),

Gene: Capablanca_255 Start: 144683, Stop: 146113, Start Num: 14

Candidate Starts for Capablanca_255:

(Start: 14 @144683 has 170 MA's), (25, 144773), (35, 144836), (43, 144959), (47, 144983), (58, 145067), (64, 145109), (68, 145151), (85, 145316), (86, 145319), (116, 145574), (124, 145613), (127, 145643), (133, 145706), (135, 145727), (136, 145736), (138, 145739), (143, 145772), (145, 145787), (164, 145922), (180, 145997), (187, 146054), (188, 146057),

Gene: Caravan_240 Start: 142733, Stop: 144163, Start Num: 14

Candidate Starts for Caravan_240:

(Start: 14 @142733 has 170 MA's), (25, 142823), (35, 142886), (43, 143009), (47, 143033), (58, 143117), (64, 143159), (68, 143201), (85, 143366), (86, 143369), (116, 143624), (124, 143663), (127, 143693), (133, 143756), (135, 143777), (136, 143786), (138, 143789), (143, 143822), (145, 143837), (164, 143972), (180, 144047), (187, 144104), (188, 144107),

Gene: Catera_239 Start: 141172, Stop: 142602, Start Num: 14

Candidate Starts for Catera_239:

(Start: 14 @141172 has 170 MA's), (25, 141262), (35, 141325), (43, 141448), (47, 141472), (58, 141556), (64, 141598), (68, 141640), (85, 141805), (86, 141808), (116, 142063), (124, 142102), (127, 142132), (133, 142195), (135, 142216), (136, 142225), (138, 142228), (143, 142261), (145, 142276), (164, 142411), (180, 142486), (187, 142543), (188, 142546),

Gene: Cerasum_26 Start: 22498, Stop: 23733, Start Num: 10

Candidate Starts for Cerasum_26:

(Start: 10 @22498 has 65 MA's), (27, 22618), (36, 22690), (44, 22807), (46, 22810), (55, 22888), (66, 22969), (70, 23011), (79, 23089), (95, 23215), (96, 23221), (101, 23260), (108, 23320), (110, 23335), (115, 23377), (121, 23413), (122, 23416), (128, 23467), (129, 23476), (152, 23590), (170, 23701), (176, 23722),

Gene: Chargie21_248 Start: 140927, Stop: 142357, Start Num: 14

Candidate Starts for Chargie21_248:

(Start: 14 @140927 has 170 MA's), (25, 141017), (35, 141080), (43, 141203), (47, 141227), (58, 141311), (64, 141353), (68, 141395), (85, 141560), (86, 141563), (116, 141818), (124, 141857), (127, 141887), (133, 141950), (135, 141971), (136, 141980), (138, 141983), (143, 142016), (145, 142031), (164, 142166), (180, 142241), (187, 142298), (188, 142301),

Gene: CharlieB_245 Start: 142195, Stop: 143625, Start Num: 14

Candidate Starts for CharlieB_245:

(Start: 14 @142195 has 170 MA's), (25, 142285), (35, 142348), (43, 142471), (47, 142495), (58, 142579), (64, 142621), (68, 142663), (85, 142828), (86, 142831), (116, 143086), (124, 143125), (127, 143155), (133, 143218), (135, 143239), (136, 143248), (138, 143251), (143, 143284), (145, 143299), (164, 143434), (180, 143509), (188, 143569),

Gene: ChaylaJr_249 Start: 141869, Stop: 143299, Start Num: 14

Candidate Starts for ChaylaJr_249:

(Start: 14 @141869 has 170 MA's), (25, 141959), (35, 142022), (43, 142145), (47, 142169), (58, 142253), (64, 142295), (68, 142337), (85, 142502), (86, 142505), (116, 142760), (124, 142799), (127, 142829), (133, 142892), (135, 142913), (136, 142922), (138, 142925), (143, 142958), (145, 142973), (164, 143108), (180, 143183), (187, 143240), (188, 143243),

Gene: Che8_32 Start: 26683, Stop: 27957, Start Num: 10

Candidate Starts for Che8_32:

(Start: 10 @26683 has 65 MA's), (27, 26803), (36, 26875), (44, 26992), (46, 26995), (55, 27073), (66, 27154), (70, 27196), (79, 27274), (95, 27400), (96, 27406), (101, 27445), (110, 27520), (115, 27562), (121, 27598), (125, 27616), (128, 27652), (129, 27661), (152, 27775), (155, 27817), (160, 27826), (169, 27883), (170, 27886),

Gene: ChickenPhender_246 Start: 140625, Stop: 142055, Start Num: 14

Candidate Starts for ChickenPhender_246:

(Start: 14 @140625 has 170 MA's), (25, 140715), (35, 140778), (43, 140901), (47, 140925), (58, 141009), (64, 141051), (68, 141093), (85, 141258), (86, 141261), (116, 141516), (124, 141555), (127, 141585), (133, 141648), (135, 141669), (136, 141678), (138, 141681), (143, 141714), (145, 141729), (164, 141864), (180, 141939), (187, 141996), (188, 141999),

Gene: Chomp_249 Start: 144061, Stop: 145491, Start Num: 14

Candidate Starts for Chomp_249:

(Start: 14 @144061 has 170 MA's), (25, 144151), (35, 144214), (43, 144337), (47, 144361), (58, 144445), (64, 144487), (68, 144529), (85, 144694), (86, 144697), (116, 144952), (124, 144991), (127, 145021), (133, 145084), (135, 145105), (136, 145114), (138, 145117), (143, 145150), (145, 145165), (164, 145300), (180, 145375), (187, 145432), (188, 145435),

Gene: CindyLou_251 Start: 144321, Stop: 145751, Start Num: 14

Candidate Starts for CindyLou_251:

(Start: 14 @144321 has 170 MA's), (25, 144411), (26, 144414), (35, 144474), (43, 144597), (47, 144621), (58, 144705), (64, 144747), (68, 144789), (85, 144954), (86, 144957), (116, 145212), (124, 145251), (127, 145281), (133, 145344), (135, 145365), (136, 145374), (138, 145377), (143, 145410), (145, 145425), (164, 145560), (180, 145635), (187, 145692), (188, 145695),

Gene: Colt_240 Start: 145032, Stop: 146462, Start Num: 14

Candidate Starts for Colt_240:

(Start: 14 @145032 has 170 MA's), (25, 145122), (35, 145185), (43, 145308), (47, 145332), (58, 145416), (64, 145458), (68, 145500), (85, 145665), (86, 145668), (116, 145923), (124, 145962), (127, 145992), (133, 146055), (135, 146076), (136, 146085), (138, 146088), (143, 146121), (145, 146136), (164, 146271), (180, 146346), (188, 146406),

Gene: Concombres_256 Start: 144663, Stop: 146096, Start Num: 12

Candidate Starts for Concombres_256:

(Start: 10 @144639 has 65 MA's), (12, 144663), (Start: 14 @144666 has 170 MA's), (25, 144756), (35, 144819), (43, 144942), (47, 144966), (58, 145050), (64, 145092), (68, 145134), (85, 145299), (86, 145302), (116, 145557), (124, 145596), (127, 145626), (133, 145689), (135, 145710), (136, 145719), (138, 145722), (143, 145755), (145, 145770), (164, 145905), (180, 145980), (187, 146037), (188, 146040),

Gene: Cornie_30 Start: 26720, Stop: 28018, Start Num: 10

Candidate Starts for Cornie_30:

(Start: 10 @26720 has 65 MA's), (27, 26837), (36, 26909), (44, 27026), (46, 27029), (55, 27107), (66, 27188), (70, 27239), (92, 27416), (95, 27458), (97, 27467), (115, 27623), (152, 27836), (155, 27878), (160, 27887), (169, 27944), (170, 27947),

Gene: Cornucopia_31 Start: 26383, Stop: 27534, Start Num: 16

Candidate Starts for Cornucopia_31:

(3, 26110), (5, 26131), (Start: 16 @26383 has 15 MA's), (27, 26467), (41, 26617), (49, 26671), (70, 26812), (80, 26890), (95, 27016), (96, 27022), (101, 27061), (108, 27121), (110, 27136), (115, 27178), (121, 27214), (122, 27217), (128, 27268), (129, 27277), (152, 27391), (170, 27502), (174, 27520), (176, 27523),

Gene: DRBy19_30 Start: 26346, Stop: 27617, Start Num: 10

Candidate Starts for DRBy19_30:

(Start: 10 @26346 has 65 MA's), (27, 26463), (36, 26535), (44, 26652), (46, 26655), (55, 26733), (66, 26814), (70, 26856), (79, 26934), (95, 27060), (108, 27165), (110, 27180), (115, 27222), (121, 27258), (122, 27261), (128, 27312), (129, 27321), (152, 27435), (155, 27477), (160, 27486), (169, 27543), (170, 27546),

Gene: DTDevon_251 Start: 144700, Stop: 146130, Start Num: 14

Candidate Starts for DTDevon_251:

(Start: 14 @144700 has 170 MA's), (25, 144790), (35, 144853), (43, 144976), (47, 145000), (58, 145084), (64, 145126), (68, 145168), (85, 145333), (86, 145336), (116, 145591), (124, 145630), (127, 145660), (133, 145723), (135, 145744), (136, 145753), (138, 145756), (143, 145789), (145, 145804), (164, 145939), (180, 146014), (187, 146071), (188, 146074),

Gene: Daffodil_256 Start: 142987, Stop: 144417, Start Num: 14

Candidate Starts for Daffodil_256:

(Start: 14 @142987 has 170 MA's), (25, 143077), (35, 143140), (43, 143263), (47, 143287), (58, 143371), (64, 143413), (68, 143455), (85, 143620), (86, 143623), (116, 143878), (124, 143917), (127, 143947), (133, 144010), (135, 144031), (136, 144040), (138, 144043), (143, 144076), (145, 144091), (164, 144226), (180, 144301), (187, 144358), (188, 144361),

Gene: Dandelion_256 Start: 145521, Stop: 146951, Start Num: 14

Candidate Starts for Dandelion_256:

(Start: 14 @145521 has 170 MA's), (25, 145611), (26, 145614), (35, 145674), (43, 145797), (47, 145821), (58, 145905), (64, 145947), (68, 145989), (85, 146154), (86, 146157), (116, 146412), (124, 146451), (127, 146481), (133, 146544), (135, 146565), (136, 146574), (138, 146577), (143, 146610), (145, 146625), (164, 146760), (180, 146835), (187, 146892), (188, 146895),

Gene: Dante_30 Start: 26366, Stop: 27637, Start Num: 10

Candidate Starts for Dante_30:

(Start: 10 @26366 has 65 MA's), (27, 26483), (36, 26555), (44, 26672), (46, 26675), (55, 26753), (66, 26834), (70, 26876), (79, 26954), (95, 27080), (96, 27086), (97, 27089), (110, 27200), (115, 27242), (122, 27281), (125, 27296), (128, 27332), (129, 27341), (152, 27455), (155, 27497), (169, 27563), (170, 27566),

Gene: Darko_250 Start: 142645, Stop: 144075, Start Num: 14

Candidate Starts for Darko_250:

(Start: 14 @142645 has 170 MA's), (25, 142735), (26, 142738), (35, 142798), (43, 142921), (47, 142945), (58, 143029), (64, 143071), (68, 143113), (85, 143278), (86, 143281), (116, 143536), (124, 143575), (127, 143605), (133, 143668), (135, 143689), (136, 143698), (138, 143701), (143, 143734), (145, 143749), (164, 143884), (180, 143959), (187, 144016), (188, 144019),

Gene: Delilah_248 Start: 143080, Stop: 144510, Start Num: 14

Candidate Starts for Delilah_248:

(Start: 14 @143080 has 170 MA's), (25, 143170), (35, 143233), (43, 143356), (47, 143380), (58, 143464), (64, 143506), (68, 143548), (85, 143713), (86, 143716), (116, 143971), (124, 144010), (127, 144040), (133, 144103), (135, 144124), (136, 144133), (138, 144136), (143, 144169), (145, 144184), (164, 144319), (180, 144394), (187, 144451), (188, 144454),

Gene: Delylah_252 Start: 143357, Stop: 144787, Start Num: 14

Candidate Starts for Delylah_252:

(Start: 14 @143357 has 170 MA's), (25, 143447), (35, 143510), (43, 143633), (47, 143657), (58, 143741), (64, 143783), (68, 143825), (85, 143990), (86, 143993), (116, 144248), (124, 144287), (127, 144317), (133, 144380), (135, 144401), (136, 144410), (138, 144413), (143, 144446), (145, 144461), (164, 144596), (180, 144671), (187, 144728), (188, 144731),

Gene: Demodog_258 Start: 144673, Stop: 146106, Start Num: 12

Candidate Starts for Demodog_258:

(Start: 10 @144649 has 65 MA's), (12, 144673), (Start: 14 @144676 has 170 MA's), (25, 144766), (35, 144829), (43, 144952), (47, 144976), (58, 145060), (64, 145102), (68, 145144), (85, 145309), (86, 145312), (116, 145567), (124, 145606), (127, 145636), (133, 145699), (135, 145720), (136, 145729), (138, 145732), (143, 145765), (145, 145780), (164, 145915), (180, 145990), (188, 146050),

Gene: Derek_246 Start: 143338, Stop: 144768, Start Num: 14

Candidate Starts for Derek_246:

(Start: 14 @143338 has 170 MA's), (25, 143428), (35, 143491), (43, 143614), (47, 143638), (58, 143722), (64, 143764), (68, 143806), (85, 143971), (86, 143974), (116, 144229), (124, 144268), (127, 144298), (133, 144361), (135, 144382), (136, 144391), (138, 144394), (143, 144427), (145, 144442), (164, 144577), (180, 144652), (187, 144709), (188, 144712),

Gene: Dietrick_239 Start: 141201, Stop: 142631, Start Num: 14

Candidate Starts for Dietrick_239:

(Start: 14 @141201 has 170 MA's), (25, 141291), (35, 141354), (43, 141477), (47, 141501), (58, 141585), (64, 141627), (68, 141669), (85, 141834), (86, 141837), (116, 142092), (124, 142131), (127, 142161), (133, 142224), (135, 142245), (136, 142254), (138, 142257), (143, 142290), (145, 142305), (164, 142440), (180, 142515), (187, 142572), (188, 142575),

Gene: Diminimus_36 Start: 29798, Stop: 31165, Start Num: 20

Candidate Starts for Diminimus_36:

(Start: 20 @29798 has 14 MA's), (24, 29855), (28, 29882), (30, 29897), (33, 29918), (35, 29921), (44, 30059), (50, 30083), (57, 30161), (58, 30167), (59, 30170), (68, 30245), (84, 30377), (90, 30404), (91, 30413), (99, 30467), (101, 30494), (104, 30524), (111, 30578), (119, 30650), (142, 30836), (162, 30956), (164, 30977), (167, 30995), (168, 31010), (178, 31040), (183, 31070), (188, 31106), (189, 31109), (193, 31145),

Gene: DirtMonster_239 Start: 141933, Stop: 143363, Start Num: 14

Candidate Starts for DirtMonster_239:

(Start: 14 @141933 has 170 MA's), (25, 142023), (35, 142086), (43, 142209), (47, 142233), (58, 142317), (64, 142359), (68, 142401), (85, 142566), (86, 142569), (116, 142824), (124, 142863), (127, 142893), (133, 142956), (135, 142977), (136, 142986), (138, 142989), (143, 143022), (145, 143037), (164, 143172), (180, 143247), (187, 143304), (188, 143307),

Gene: Domi_244 Start: 142540, Stop: 143970, Start Num: 14

Candidate Starts for Domi_244:

(Start: 14 @142540 has 170 MA's), (25, 142630), (26, 142633), (35, 142693), (43, 142816), (47, 142840), (58, 142924), (64, 142966), (68, 143008), (85, 143173), (86, 143176), (116, 143431), (124, 143470), (127, 143500), (133, 143563), (135, 143584), (136, 143593), (138, 143596), (143, 143629), (145, 143644), (164, 143779), (180, 143854), (187, 143911), (188, 143914),

Gene: DosHalletts_32 Start: 26602, Stop: 27903, Start Num: 10

Candidate Starts for DosHalletts_32:

(Start: 10 @26602 has 65 MA's), (27, 26722), (36, 26794), (44, 26911), (46, 26914), (55, 26992), (66, 27073), (70, 27124), (92, 27301), (95, 27343), (97, 27352), (112, 27490), (152, 27721), (155, 27763), (160, 27772), (169, 27829), (170, 27832),

Gene: Doug_31 Start: 26879, Stop: 28087, Start Num: 16

Candidate Starts for Doug_31:

(3, 26606), (4, 26609), (Start: 16 @26879 has 15 MA's), (27, 26963), (41, 27113), (49, 27167), (70, 27308), (80, 27386), (95, 27512), (96, 27518), (101, 27557), (108, 27617), (110, 27632), (115, 27674), (121, 27710), (122, 27713), (128, 27764), (129, 27773), (152, 27887), (170, 27998),

Gene: DrPhinkDaddy_247 Start: 143765, Stop: 145195, Start Num: 14

Candidate Starts for DrPhinkDaddy_247:

(Start: 14 @143765 has 170 MA's), (25, 143855), (35, 143918), (43, 144041), (47, 144065), (58, 144149), (64, 144191), (68, 144233), (85, 144398), (86, 144401), (116, 144656), (124, 144695), (127, 144725), (133, 144788), (135, 144809), (136, 144818), (138, 144821), (143, 144854), (145, 144869), (164, 145004), (180, 145079), (187, 145136), (188, 145139),

Gene: Drazdys_247 Start: 143345, Stop: 144775, Start Num: 14

Candidate Starts for Drazdys_247:

(Start: 14 @143345 has 170 MA's), (25, 143435), (35, 143498), (43, 143621), (47, 143645), (58, 143729), (64, 143771), (68, 143813), (85, 143978), (86, 143981), (116, 144236), (124, 144275), (127, 144305), (133, 144368), (135, 144389), (136, 144398), (138, 144401), (143, 144434), (145, 144449), (164, 144584), (180, 144659), (187, 144716), (188, 144719),

Gene: Dulcita_36 Start: 29798, Stop: 31165, Start Num: 20

Candidate Starts for Dulcita_36:

(Start: 20 @29798 has 14 MA's), (24, 29855), (28, 29882), (30, 29897), (33, 29918), (35, 29921), (44, 30059), (50, 30083), (57, 30161), (58, 30167), (59, 30170), (68, 30245), (84, 30377), (90, 30404), (91, 30413), (99, 30467), (101, 30494), (104, 30524), (111, 30578), (119, 30650), (142, 30836), (162, 30956), (164, 30977), (167, 30995), (168, 31010), (178, 31040), (183, 31070), (188, 31106), (189, 31109), (193, 31145),

Gene: ET08_236 Start: 141669, Stop: 143099, Start Num: 14

Candidate Starts for ET08_236:

(8, 141627), (Start: 14 @141669 has 170 MA's), (25, 141759), (35, 141822), (43, 141945), (47, 141969), (58, 142053), (64, 142095), (68, 142137), (85, 142302), (86, 142305), (116, 142560), (124, 142599), (127, 142629), (133, 142692), (135, 142713), (136, 142722), (138, 142725), (143, 142758), (145, 142773), (164, 142908), (180, 142983), (188, 143043),

Gene: EasyJones_251 Start: 141721, Stop: 143151, Start Num: 14

Candidate Starts for EasyJones_251:

(Start: 14 @141721 has 170 MA's), (25, 141811), (35, 141874), (43, 141997), (47, 142021), (58, 142105), (64, 142147), (68, 142189), (85, 142354), (86, 142357), (116, 142612), (124, 142651), (127, 142681), (133, 142744), (135, 142765), (136, 142774), (138, 142777), (143, 142810), (145, 142825), (164, 142960), (180, 143035), (187, 143092), (188, 143095),

Gene: EggyFarm_258 Start: 144560, Stop: 145990, Start Num: 14

Candidate Starts for EggyFarm_258:

(Start: 14 @144560 has 170 MA's), (25, 144650), (35, 144713), (43, 144836), (47, 144860), (58, 144944), (64, 144986), (68, 145028), (85, 145193), (86, 145196), (116, 145451), (124, 145490), (127, 145520), (133, 145583), (135, 145604), (136, 145613), (138, 145616), (143, 145649), (145, 145664), (164, 145799), (180, 145874), (187, 145931), (188, 145934),

Gene: EmToTheThree_251 Start: 143553, Stop: 144983, Start Num: 14

Candidate Starts for EmToTheThree_251:

(Start: 14 @143553 has 170 MA's), (25, 143643), (35, 143706), (43, 143829), (47, 143853), (58, 143937), (64, 143979), (68, 144021), (85, 144186), (86, 144189), (116, 144444), (124, 144483), (127, 144513), (133, 144576), (135, 144597), (136, 144606), (138, 144609), (143, 144642), (145, 144657), (164, 144792), (180, 144867), (187, 144924), (188, 144927),

Gene: Emma_32 Start: 26896, Stop: 28128, Start Num: 10

Candidate Starts for Emma_32:

(Start: 10 @26896 has 65 MA's), (27, 27013), (36, 27085), (44, 27202), (46, 27205), (55, 27283), (66, 27364), (70, 27406), (79, 27484), (95, 27610), (96, 27616), (97, 27619), (101, 27655), (110, 27730), (115, 27772), (122, 27811), (125, 27826), (128, 27862), (129, 27871), (152, 27985), (170, 28096), (177, 28117),

Gene: EmmaElysia_255 Start: 144216, Stop: 145646, Start Num: 14

Candidate Starts for EmmaElysia_255:

(Start: 14 @144216 has 170 MA's), (25, 144306), (35, 144369), (43, 144492), (47, 144516), (58, 144600), (64, 144642), (68, 144684), (85, 144849), (86, 144852), (116, 145107), (124, 145146), (127, 145176), (133, 145239), (135, 145260), (136, 145269), (138, 145272), (143, 145305), (145, 145320), (164, 145455), (180, 145530), (187, 145587), (188, 145590),

Gene: Empress_31 Start: 27662, Stop: 28933, Start Num: 10

Candidate Starts for Empress_31:

(Start: 10 @27662 has 65 MA's), (27, 27779), (36, 27851), (44, 27968), (46, 27971), (55, 28049), (66, 28130), (70, 28172), (79, 28250), (95, 28376), (96, 28382), (97, 28385), (110, 28496), (115, 28538), (122, 28577), (125, 28592), (128, 28628), (129, 28637), (152, 28751), (155, 28793), (169, 28859), (170, 28862),

Gene: Eradicator_30 Start: 26355, Stop: 27626, Start Num: 10

Candidate Starts for Eradicator_30:

(Start: 10 @26355 has 65 MA's), (27, 26472), (36, 26544), (44, 26661), (46, 26664), (55, 26742), (66, 26823), (70, 26865), (79, 26943), (95, 27069), (96, 27075), (97, 27078), (110, 27189), (115, 27231), (122, 27270), (125, 27285), (128, 27321), (129, 27330), (152, 27444), (155, 27486), (160, 27495), (169, 27552), (170, 27555),

Gene: Erdmann_252 Start: 143521, Stop: 144951, Start Num: 14

Candidate Starts for Erdmann_252:

(Start: 14 @143521 has 170 MA's), (25, 143611), (35, 143674), (43, 143797), (47, 143821), (58, 143905), (64, 143947), (68, 143989), (85, 144154), (86, 144157), (116, 144412), (124, 144451), (127, 144481), (133, 144544), (135, 144565), (136, 144574), (138, 144577), (143, 144610), (145, 144625), (164, 144760), (180, 144835), (187, 144892), (188, 144895),

Gene: ErnieJ_244 Start: 140349, Stop: 141779, Start Num: 14

Candidate Starts for ErnieJ_244:

(Start: 14 @140349 has 170 MA's), (25, 140439), (35, 140502), (43, 140625), (47, 140649), (58, 140733), (64, 140775), (68, 140817), (85, 140982), (86, 140985), (116, 141240), (124, 141279), (127, 141309), (133, 141372), (135, 141393), (136, 141402), (138, 141405), (143, 141438), (145, 141453), (164, 141588), (180, 141663), (187, 141720), (188, 141723),

Gene: Essence_248 Start: 142557, Stop: 143987, Start Num: 14

Candidate Starts for Essence_248:

(Start: 14 @142557 has 170 MA's), (25, 142647), (35, 142710), (43, 142833), (47, 142857), (58, 142941), (64, 142983), (68, 143025), (85, 143190), (86, 143193), (116, 143448), (124, 143487), (127, 143517), (133, 143580), (135, 143601), (136, 143610), (138, 143613), (143, 143646), (145, 143661), (164, 143796), (180, 143871), (187, 143928), (188, 143931),

Gene: Estave1_28 Start: 25767, Stop: 27038, Start Num: 10

Candidate Starts for Estave1_28:

(Start: 10 @25767 has 65 MA's), (27, 25884), (36, 25956), (44, 26073), (46, 26076), (55, 26154), (66, 26235), (70, 26277), (79, 26355), (87, 26409), (95, 26481), (96, 26487), (97, 26490), (101, 26526), (110, 26601), (115, 26643), (121, 26679), (128, 26733), (129, 26742), (152, 26856), (155, 26898), (160, 26907), (169, 26964), (170, 26967),

Gene: Estes_41 Start: 31074, Stop: 32489, Start Num: 9

Candidate Starts for Estes_41:

(Start: 9 @31074 has 6 MA's), (17, 31128), (18, 31134), (22, 31164), (24, 31200), (44, 31401), (51, 31431), (54, 31449), (60, 31500), (63, 31515), (84, 31704), (90, 31731), (92, 31746), (101, 31821), (105, 31854), (111, 31905), (120, 31983), (142, 32160), (147, 32184), (148, 32187), (162, 32280), (164, 32301), (183, 32394), (191, 32457),

Gene: Ewok_249 Start: 143015, Stop: 144445, Start Num: 14

Candidate Starts for Ewok_249:

(Start: 14 @143015 has 170 MA's), (25, 143105), (35, 143168), (43, 143291), (47, 143315), (58, 143399), (64, 143441), (68, 143483), (85, 143648), (86, 143651), (116, 143906), (124, 143945), (127, 143975), (133, 144038), (135, 144059), (136, 144068), (138, 144071), (143, 144104), (145, 144119), (164, 144254), (180, 144329), (187, 144386), (188, 144389),

Gene: Flabslab_245 Start: 139614, Stop: 141044, Start Num: 14

Candidate Starts for Flabslab_245:

(Start: 10 @139587 has 65 MA's), (Start: 14 @139614 has 170 MA's), (25, 139704), (35, 139767), (43, 139890), (47, 139914), (58, 139998), (64, 140040), (68, 140082), (85, 140247), (86, 140250), (116, 140505), (124, 140544), (127, 140574), (133, 140637), (135, 140658), (136, 140667), (138, 140670), (143, 140703), (145, 140718), (164, 140853), (180, 140928), (188, 140988),

Gene: Fludd_250 Start: 141433, Stop: 142863, Start Num: 14

Candidate Starts for Fludd_250:

(Start: 14 @141433 has 170 MA's), (25, 141523), (35, 141586), (43, 141709), (47, 141733), (58, 141817), (64, 141859), (68, 141901), (85, 142066), (86, 142069), (116, 142324), (124, 142363), (127, 142393), (133, 142456), (135, 142477), (136, 142486), (138, 142489), (143, 142522), (145, 142537), (164, 142672), (180, 142747), (187, 142804), (188, 142807),

Gene: FoxtrotP1_249 Start: 144107, Stop: 145537, Start Num: 14

Candidate Starts for FoxtrotP1_249:

(Start: 14 @144107 has 170 MA's), (25, 144197), (35, 144260), (43, 144383), (47, 144407), (58, 144491), (64, 144533), (68, 144575), (85, 144740), (86, 144743), (116, 144998), (124, 145037), (127, 145067), (133, 145130), (135, 145151), (136, 145160), (138, 145163), (143, 145196), (145, 145211), (164, 145346), (180, 145421), (187, 145478), (188, 145481),

Gene: Frankie_33 Start: 26909, Stop: 28665, Start Num: 13

Candidate Starts for Frankie_33:

(7, 26888), (Start: 13 @26909 has 2 MA's), (27, 26990), (31, 27029), (38, 27080), (40, 27122), (41, 27125), (44, 27170), (70, 27365), (72, 27374), (73, 27419), (81, 27497), (83, 27518), (88, 27563), (100, 27647), (102, 27704), (123, 27872), (137, 27992), (146, 28046), (156, 28133), (157, 28136), (159, 28139), (195, 28433), (196, 28487), (197, 28598),

Gene: FrayBell_253 Start: 141564, Stop: 142994, Start Num: 14

Candidate Starts for FrayBell_253:

(Start: 14 @141564 has 170 MA's), (25, 141654), (26, 141657), (35, 141717), (43, 141840), (47, 141864), (58, 141948), (64, 141990), (68, 142032), (85, 142197), (86, 142200), (116, 142455), (124, 142494), (127, 142524), (133, 142587), (135, 142608), (136, 142617), (138, 142620), (143, 142653), (145, 142668), (164, 142803), (180, 142878), (187, 142935), (188, 142938),

Gene: FreddyB_30 Start: 26513, Stop: 27784, Start Num: 10

Candidate Starts for FreddyB_30:

(Start: 10 @26513 has 65 MA's), (27, 26630), (36, 26702), (44, 26819), (46, 26822), (55, 26900), (66, 26981), (70, 27023), (79, 27101), (95, 27227), (108, 27332), (110, 27347), (115, 27389), (121, 27425), (122, 27428), (128, 27479), (129, 27488), (152, 27602), (155, 27644), (160, 27653), (169, 27710), (170, 27713),

Gene: FudgeTart_246 Start: 142611, Stop: 144041, Start Num: 14

Candidate Starts for FudgeTart_246:

(Start: 14 @142611 has 170 MA's), (25, 142701), (35, 142764), (43, 142887), (47, 142911), (58, 142995), (64, 143037), (68, 143079), (85, 143244), (86, 143247), (116, 143502), (124, 143541), (127, 143571), (133, 143634), (135, 143655), (136, 143664), (138, 143667), (143, 143700), (145, 143715), (164, 143850), (180, 143925), (187, 143982), (188, 143985),

Gene: Gabriel_253 Start: 141592, Stop: 143022, Start Num: 14

Candidate Starts for Gabriel_253:

(Start: 14 @141592 has 170 MA's), (25, 141682), (35, 141745), (43, 141868), (47, 141892), (58, 141976), (64, 142018), (68, 142060), (85, 142225), (86, 142228), (116, 142483), (124, 142522), (127, 142552), (133, 142615), (135, 142636), (136, 142645), (138, 142648), (143, 142681), (145, 142696), (164, 142831), (180, 142906), (187, 142963), (188, 142966),

Gene: Galactic_31 Start: 26523, Stop: 27770, Start Num: 10

Candidate Starts for Galactic_31:

(Start: 10 @26523 has 65 MA's), (27, 26643), (36, 26715), (44, 26832), (46, 26835), (55, 26913), (66, 26994), (70, 27036), (79, 27114), (95, 27240), (96, 27246), (101, 27285), (108, 27345), (110, 27360), (115, 27402), (121, 27438), (122, 27441), (128, 27492), (129, 27501), (152, 27615), (155, 27657), (160, 27666), (170, 27726),

Gene: Gamgam_252 Start: 141949, Stop: 143379, Start Num: 14

Candidate Starts for Gamgam_252:

(Start: 14 @141949 has 170 MA's), (25, 142039), (35, 142102), (43, 142225), (47, 142249), (58, 142333), (64, 142375), (68, 142417), (85, 142582), (86, 142585), (116, 142840), (124, 142879), (127, 142909), (133, 142972), (135, 142993), (136, 143002), (138, 143005), (143, 143038), (145, 143053), (164, 143188), (180, 143263), (187, 143320), (188, 143323),

Gene: Gandalph_31 Start: 26586, Stop: 27860, Start Num: 10

Candidate Starts for Gandalph_31:

(Start: 10 @26586 has 65 MA's), (27, 26706), (44, 26895), (46, 26898), (55, 26976), (66, 27057), (70, 27099), (79, 27177), (95, 27303), (96, 27309), (101, 27348), (108, 27408), (110, 27423), (113, 27459), (115, 27465), (121, 27501), (125, 27519), (128, 27555), (129, 27564), (152, 27678), (155, 27720), (160, 27729), (169, 27786), (170, 27789),

Gene: GardenSalsa_40 Start: 30898, Stop: 32313, Start Num: 9

Candidate Starts for GardenSalsa_40:

(Start: 9 @30898 has 6 MA's), (17, 30952), (18, 30958), (22, 30988), (24, 31024), (44, 31225), (51, 31255), (54, 31273), (60, 31324), (63, 31339), (70, 31411), (71, 31417), (84, 31528), (90, 31555), (92, 31570), (101, 31645), (105, 31678), (111, 31729), (120, 31807), (142, 31984), (147, 32008), (148, 32011), (162, 32104), (164, 32125), (168, 32158), (183, 32218), (191, 32281),

Gene: GenevaB15_40 Start: 30943, Stop: 32358, Start Num: 9

Candidate Starts for GenevaB15_40:

(Start: 9 @30943 has 6 MA's), (17, 30997), (18, 31003), (22, 31033), (24, 31069), (44, 31270), (51, 31300), (54, 31318), (60, 31369), (63, 31384), (84, 31573), (90, 31600), (92, 31615), (101, 31690), (105, 31723), (111, 31774), (142, 32029), (147, 32053), (148, 32056), (162, 32149), (164, 32170), (168, 32203), (183, 32263), (191, 32326),

Gene: Ghost_250 Start: 142573, Stop: 144003, Start Num: 14

Candidate Starts for Ghost_250:

(Start: 14 @142573 has 170 MA's), (25, 142663), (35, 142726), (43, 142849), (47, 142873), (58, 142957), (64, 142999), (68, 143041), (85, 143206), (86, 143209), (116, 143464), (124, 143503), (127, 143533), (133, 143596), (135, 143617), (136, 143626), (138, 143629), (143, 143662), (145, 143677), (164, 143812), (180, 143887), (187, 143944), (188, 143947),

Gene: Girr_31 Start: 26444, Stop: 27691, Start Num: 10

Candidate Starts for Girr_31:

(Start: 10 @26444 has 65 MA's), (27, 26564), (36, 26636), (44, 26753), (46, 26756), (55, 26834), (66, 26915), (70, 26957), (79, 27035), (95, 27161), (101, 27206), (108, 27266), (110, 27281), (115, 27323), (121, 27359), (128, 27413), (129, 27422), (152, 27536), (170, 27647),

Gene: Gizmo_256 Start: 145438, Stop: 146868, Start Num: 14

Candidate Starts for Gizmo_256:

(Start: 14 @145438 has 170 MA's), (25, 145528), (35, 145591), (43, 145714), (47, 145738), (58, 145822), (64, 145864), (68, 145906), (85, 146071), (86, 146074), (116, 146329), (124, 146368), (127, 146398), (133, 146461), (135, 146482), (136, 146491), (138, 146494), (143, 146527), (145, 146542), (164, 146677), (180, 146752), (187, 146809), (188, 146812),

Gene: Glaske16_36 Start: 29798, Stop: 31165, Start Num: 20

Candidate Starts for Glaske16_36:

(Start: 20 @29798 has 14 MA's), (24, 29855), (28, 29882), (30, 29897), (33, 29918), (35, 29921), (44, 30059), (50, 30083), (57, 30161), (58, 30167), (59, 30170), (68, 30245), (84, 30377), (90, 30404), (91, 30413), (99, 30467), (101, 30494), (104, 30524), (111, 30578), (119, 30650), (142, 30836), (162, 30956), (164, 30977), (167, 30995), (168, 31010), (178, 31040), (183, 31070), (188, 31106), (189, 31109), (193, 31145),

Gene: Gorge_30 Start: 26480, Stop: 27751, Start Num: 10

Candidate Starts for Gorge_30:

(Start: 10 @26480 has 65 MA's), (27, 26597), (36, 26669), (44, 26786), (46, 26789), (55, 26867), (66, 26948), (70, 26990), (79, 27068), (95, 27194), (108, 27299), (110, 27314), (115, 27356), (121, 27392), (122, 27395), (128, 27446), (129, 27455), (152, 27569), (155, 27611), (160, 27620), (169, 27677), (170, 27680),

Gene: Grasshills_257 Start: 144559, Stop: 145989, Start Num: 14

Candidate Starts for Grasshills_257:

(Start: 14 @144559 has 170 MA's), (25, 144649), (35, 144712), (43, 144835), (47, 144859), (58, 144943), (64, 144985), (68, 145027), (85, 145192), (86, 145195), (116, 145450), (124, 145489), (127, 145519), (133, 145582), (135, 145603), (136, 145612), (138, 145615), (143, 145648), (145, 145663), (164, 145798), (180, 145873), (187, 145930), (188, 145933),

Gene: Grungle_232 Start: 139838, Stop: 141268, Start Num: 14

Candidate Starts for Grungle_232:

(Start: 14 @139838 has 170 MA's), (25, 139928), (35, 139991), (43, 140114), (47, 140138), (58, 140222), (64, 140264), (68, 140306), (85, 140471), (86, 140474), (116, 140729), (124, 140768), (127, 140798), (133, 140861), (135, 140882), (136, 140891), (138, 140894), (143, 140927), (145, 140942), (164, 141077), (180, 141152), (187, 141209), (188, 141212),

Gene: Guppsters_32 Start: 26753, Stop: 28045, Start Num: 10

Candidate Starts for Guppsters_32:

(Start: 10 @26753 has 65 MA's), (27, 26873), (36, 26945), (44, 27062), (46, 27065), (53, 27119), (55, 27143), (66, 27224), (70, 27266), (79, 27344), (95, 27470), (96, 27476), (101, 27515), (108, 27575), (110, 27590), (115, 27632), (122, 27671), (125, 27686), (128, 27722), (129, 27731), (152, 27845), (170, 27956),

Gene: Guwapp_246 Start: 141407, Stop: 142837, Start Num: 14

Candidate Starts for Guwapp_246:

(Start: 14 @141407 has 170 MA's), (25, 141497), (26, 141500), (35, 141560), (43, 141683), (47, 141707), (58, 141791), (64, 141833), (68, 141875), (85, 142040), (86, 142043), (116, 142298), (124, 142337), (127, 142367), (133, 142430), (135, 142451), (136, 142460), (138, 142463), (143, 142496), (145, 142511), (164, 142646), (180, 142721), (187, 142778), (188, 142781),

Gene: Hades_31 Start: 26579, Stop: 27853, Start Num: 10

Candidate Starts for Hades_31:

(1, 26147), (2, 26150), (4, 26303), (Start: 10 @26579 has 65 MA's), (27, 26699), (36, 26771), (44, 26888), (46, 26891), (55, 26969), (66, 27050), (70, 27092), (79, 27170), (95, 27296), (96, 27302), (97, 27305), (110, 27416), (115, 27458), (121, 27494), (125, 27512), (128, 27548), (129, 27557), (152, 27671), (155, 27713), (160, 27722), (169, 27779), (170, 27782),

Gene: Halldule_242 Start: 141020, Stop: 142450, Start Num: 14

Candidate Starts for Halldule_242:

(Start: 14 @141020 has 170 MA's), (25, 141110), (35, 141173), (43, 141296), (47, 141320), (58, 141404), (64, 141446), (68, 141488), (85, 141653), (86, 141656), (116, 141911), (124, 141950), (127, 141980), (133, 142043), (135, 142064), (136, 142073), (138, 142076), (143, 142109), (145, 142124), (164, 142259), (180, 142334), (187, 142391), (188, 142394),

Gene: HyRo_235 Start: 141924, Stop: 143354, Start Num: 14

Candidate Starts for HyRo_235:

(Start: 14 @141924 has 170 MA's), (25, 142014), (35, 142077), (43, 142200), (47, 142224), (58, 142308), (64, 142350), (68, 142392), (85, 142557), (86, 142560), (116, 142815), (124, 142854), (127, 142884), (133, 142947), (135, 142968), (136, 142977), (138, 142980), (143, 143013), (145, 143028), (164, 143163), (180, 143238), (188, 143298),

Gene: I3_260 Start: 143715, Stop: 145145, Start Num: 14

Candidate Starts for I3_260:

(Start: 14 @143715 has 170 MA's), (25, 143805), (35, 143868), (43, 143991), (47, 144015), (58, 144099), (64, 144141), (68, 144183), (85, 144348), (86, 144351), (116, 144606), (124, 144645), (127, 144675), (133, 144738), (135, 144759), (136, 144768), (138, 144771), (143, 144804), (145, 144819), (164, 144954), (180, 145029), (187, 145086), (188, 145089),

Gene: IPhane7_35 Start: 29799, Stop: 31166, Start Num: 20

Candidate Starts for IPhane7_35:

(Start: 20 @29799 has 14 MA's), (24, 29856), (28, 29883), (35, 29922), (44, 30060), (50, 30084), (57, 30162), (58, 30168), (59, 30171), (68, 30246), (84, 30378), (90, 30405), (91, 30414), (99, 30468), (101, 30495), (104, 30525), (111, 30579), (119, 30651), (142, 30837), (162, 30957), (164, 30978), (167, 30996), (168, 31011), (178, 31041), (183, 31071), (188, 31107), (189, 31110), (193, 31146),

Gene: IkeLoa_244 Start: 142305, Stop: 143735, Start Num: 14

Candidate Starts for IkeLoa_244:

(Start: 14 @142305 has 170 MA's), (25, 142395), (26, 142398), (35, 142458), (43, 142581), (47, 142605), (58, 142689), (64, 142731), (68, 142773), (85, 142938), (86, 142941), (116, 143196), (124, 143235), (127, 143265), (133, 143328), (135, 143349), (136, 143358), (138, 143361), (143, 143394), (145, 143409), (164, 143544), (180, 143619), (187, 143676), (188, 143679),

Gene: InigoMontoya_254 Start: 142623, Stop: 144053, Start Num: 14

Candidate Starts for InigoMontoya_254:

(Start: 14 @142623 has 170 MA's), (25, 142713), (35, 142776), (43, 142899), (47, 142923), (58, 143007), (64, 143049), (68, 143091), (85, 143256), (86, 143259), (116, 143514), (124, 143553), (127, 143583), (133, 143646), (135, 143667), (136, 143676), (138, 143679), (143, 143712), (145, 143727), (164, 143862), (180, 143937), (187, 143994), (188, 143997),

Gene: InterFolia_252 Start: 143369, Stop: 144799, Start Num: 14

Candidate Starts for InterFolia_252:

(Start: 14 @143369 has 170 MA's), (25, 143459), (26, 143462), (35, 143522), (43, 143645), (47, 143669), (58, 143753), (64, 143795), (68, 143837), (85, 144002), (86, 144005), (116, 144260), (124, 144299), (127, 144329), (133, 144392), (135, 144413), (136, 144422), (138, 144425), (143, 144458), (145, 144473), (164, 144608), (180, 144683), (187, 144740), (188, 144743),

Gene: Inventum_30 Start: 26444, Stop: 27607, Start Num: 16

Candidate Starts for Inventum_30:

(Start: 16 @26444 has 15 MA's), (27, 26528), (41, 26678), (49, 26732), (70, 26873), (80, 26951), (95, 27077), (96, 27083), (101, 27122), (108, 27182), (110, 27197), (115, 27239), (121, 27275), (122, 27278), (128, 27329), (129, 27338), (152, 27452),

Gene: Iota_247 Start: 142335, Stop: 143765, Start Num: 14

Candidate Starts for Iota_247:

(Start: 14 @142335 has 170 MA's), (25, 142425), (35, 142488), (43, 142611), (47, 142635), (58, 142719), (64, 142761), (68, 142803), (85, 142968), (86, 142971), (116, 143226), (124, 143265), (127, 143295), (133, 143358), (135, 143379), (136, 143388), (138, 143391), (143, 143424), (145, 143439), (164, 143574), (180, 143649), (187, 143706), (188, 143709),

Gene: IrishSherpFalk_32 Start: 27838, Stop: 29112, Start Num: 10

Candidate Starts for IrishSherpFalk_32:

(Start: 10 @27838 has 65 MA's), (27, 27958), (44, 28147), (46, 28150), (55, 28228), (66, 28309), (70, 28351), (79, 28429), (95, 28555), (96, 28561), (108, 28660), (110, 28675), (115, 28717), (121, 28753), (125, 28771), (128, 28807), (129, 28816), (152, 28930), (155, 28972), (160, 28981), (169, 29038), (170, 29041),

Gene: Issimir_244 Start: 142710, Stop: 144140, Start Num: 14

Candidate Starts for Issimir_244:

(Start: 14 @142710 has 170 MA's), (25, 142800), (35, 142863), (43, 142986), (47, 143010), (58, 143094), (64, 143136), (68, 143178), (85, 143343), (86, 143346), (116, 143601), (124, 143640), (127, 143670), (133, 143733), (135, 143754), (136, 143763), (138, 143766), (143, 143799), (145, 143814), (164, 143949), (180, 144024), (188, 144084),

Gene: Izajani_246 Start: 143155, Stop: 144585, Start Num: 14

Candidate Starts for Izajani_246:

(Start: 14 @143155 has 170 MA's), (25, 143245), (35, 143308), (43, 143431), (47, 143455), (58, 143539), (64, 143581), (68, 143623), (85, 143788), (86, 143791), (116, 144046), (124, 144085), (127, 144115), (133, 144178), (135, 144199), (136, 144208), (138, 144211), (143, 144244), (145, 144259), (164, 144394), (180, 144469), (187, 144526), (188, 144529),

Gene: JPickles_248 Start: 141760, Stop: 143190, Start Num: 14

Candidate Starts for JPickles_248:

(Start: 14 @141760 has 170 MA's), (25, 141850), (35, 141913), (43, 142036), (47, 142060), (58, 142144), (64, 142186), (68, 142228), (85, 142393), (86, 142396), (116, 142651), (124, 142690), (127, 142720), (133, 142783), (135, 142804), (136, 142813), (138, 142816), (143, 142849), (145, 142864), (164, 142999), (180, 143074), (187, 143131), (188, 143134),

Gene: James_30 Start: 26476, Stop: 27711, Start Num: 10

Candidate Starts for James_30:

(Start: 10 @26476 has 65 MA's), (27, 26593), (36, 26665), (44, 26782), (46, 26785), (55, 26863), (66, 26944), (70, 26986), (79, 27064), (95, 27190), (110, 27310), (115, 27352), (121, 27388), (122, 27391), (128, 27442), (129, 27451), (152, 27565),

Gene: Janiyra_254 Start: 143297, Stop: 144727, Start Num: 14

Candidate Starts for Janiyra_254:

(Start: 14 @143297 has 170 MA's), (25, 143387), (35, 143450), (43, 143573), (47, 143597), (58, 143681), (64, 143723), (68, 143765), (85, 143930), (86, 143933), (116, 144188), (124, 144227), (127, 144257), (133, 144320), (135, 144341), (136, 144350), (138, 144353), (143, 144386), (145, 144401), (164, 144536), (180, 144611), (187, 144668), (188, 144671),

Gene: JayJay_246 Start: 142096, Stop: 143526, Start Num: 14

Candidate Starts for JayJay_246:

(Start: 14 @142096 has 170 MA's), (25, 142186), (35, 142249), (43, 142372), (47, 142396), (58, 142480), (64, 142522), (68, 142564), (85, 142729), (86, 142732), (116, 142987), (124, 143026), (127, 143056), (133, 143119), (135, 143140), (136, 143149), (138, 143152), (143, 143185), (145, 143200), (164, 143335), (180, 143410), (188, 143470),

Gene: Jaygup_247 Start: 142482, Stop: 143912, Start Num: 14

Candidate Starts for Jaygup_247:

(Start: 14 @142482 has 170 MA's), (25, 142572), (35, 142635), (43, 142758), (47, 142782), (58, 142866), (64, 142908), (68, 142950), (85, 143115), (86, 143118), (116, 143373), (124, 143412), (127, 143442), (133, 143505), (135, 143526), (136, 143535), (138, 143538), (143, 143571), (145, 143586), (164, 143721), (180, 143796), (187, 143853), (188, 143856),

Gene: Jedediah_252 Start: 143535, Stop: 144965, Start Num: 14

Candidate Starts for Jedediah_252:

(Start: 14 @143535 has 170 MA's), (25, 143625), (35, 143688), (43, 143811), (47, 143835), (58, 143919), (64, 143961), (68, 144003), (85, 144168), (86, 144171), (116, 144426), (124, 144465), (127, 144495), (133, 144558), (135, 144579), (136, 144588), (138, 144591), (143, 144624), (145, 144639), (164, 144774), (180, 144849), (187, 144906), (188, 144909),

Gene: Jemmno_250 Start: 142254, Stop: 143684, Start Num: 14

Candidate Starts for Jemmno_250:

(Start: 14 @142254 has 170 MA's), (25, 142344), (35, 142407), (43, 142530), (47, 142554), (58, 142638), (64, 142680), (68, 142722), (85, 142887), (86, 142890), (116, 143145), (124, 143184), (127, 143214), (133, 143277), (135, 143298), (136, 143307), (138, 143310), (143, 143343), (145, 143358), (164, 143493), (180, 143568), (187, 143625), (188, 143628),

Gene: Jessibeth14_250 Start: 143730, Stop: 145160, Start Num: 14

Candidate Starts for Jessibeth14_250:

(Start: 14 @143730 has 170 MA's), (25, 143820), (35, 143883), (43, 144006), (47, 144030), (58, 144114), (64, 144156), (68, 144198), (85, 144363), (86, 144366), (116, 144621), (124, 144660), (127, 144690), (133, 144753), (135, 144774), (136, 144783), (138, 144786), (143, 144819), (145, 144834),

(164, 144969), (180, 145044), (188, 145104),

Gene: JigglyPuff_256 Start: 144225, Stop: 145655, Start Num: 14

Candidate Starts for JigglyPuff_256:

(Start: 14 @144225 has 170 MA's), (25, 144315), (35, 144378), (43, 144501), (47, 144525), (58, 144609), (64, 144651), (68, 144693), (85, 144858), (86, 144861), (116, 145116), (124, 145155), (127, 145185), (133, 145248), (135, 145269), (136, 145278), (138, 145281), (143, 145314), (145, 145329), (164, 145464), (180, 145539), (187, 145596), (188, 145599),

Gene: Job42_34 Start: 28216, Stop: 29517, Start Num: 10

Candidate Starts for Job42_34:

(Start: 10 @28216 has 65 MA's), (27, 28336), (36, 28408), (44, 28525), (46, 28528), (55, 28606), (66, 28687), (70, 28738), (92, 28915), (95, 28957), (97, 28966), (112, 29104), (152, 29335), (155, 29377), (160, 29386), (169, 29443), (170, 29446),

Gene: JulietS_242 Start: 139834, Stop: 141264, Start Num: 14

Candidate Starts for JulietS_242:

(Start: 14 @139834 has 170 MA's), (25, 139924), (35, 139987), (43, 140110), (47, 140134), (58, 140218), (64, 140260), (68, 140302), (85, 140467), (86, 140470), (116, 140725), (124, 140764), (127, 140794), (133, 140857), (135, 140878), (136, 140887), (138, 140890), (143, 140923), (145, 140938), (164, 141073), (180, 141148), (188, 141208),

Gene: JustHall_244 Start: 141784, Stop: 143214, Start Num: 14

Candidate Starts for JustHall_244:

(Start: 14 @141784 has 170 MA's), (25, 141874), (35, 141937), (43, 142060), (47, 142084), (58, 142168), (64, 142210), (68, 142252), (85, 142417), (86, 142420), (116, 142675), (124, 142714), (127, 142744), (133, 142807), (135, 142828), (136, 142837), (138, 142840), (143, 142873), (145, 142888), (164, 143023), (180, 143098), (187, 143155), (188, 143158),

Gene: Kamryn_249 Start: 143374, Stop: 144804, Start Num: 14

Candidate Starts for Kamryn_249:

(Start: 14 @143374 has 170 MA's), (25, 143464), (26, 143467), (35, 143527), (43, 143650), (47, 143674), (58, 143758), (64, 143800), (68, 143842), (85, 144007), (86, 144010), (116, 144265), (124, 144304), (127, 144334), (133, 144397), (135, 144418), (136, 144427), (138, 144430), (143, 144463), (145, 144478), (164, 144613), (180, 144688), (187, 144745), (188, 144748),

Gene: Kboogie_254 Start: 142413, Stop: 143843, Start Num: 14

Candidate Starts for Kboogie_254:

(Start: 14 @142413 has 170 MA's), (25, 142503), (35, 142566), (43, 142689), (47, 142713), (58, 142797), (64, 142839), (68, 142881), (85, 143046), (86, 143049), (116, 143304), (124, 143343), (127, 143373), (133, 143436), (135, 143457), (136, 143466), (138, 143469), (143, 143502), (145, 143517), (164, 143652), (180, 143727), (187, 143784), (188, 143787),

Gene: Khaleesi_249 Start: 143197, Stop: 144627, Start Num: 14

Candidate Starts for Khaleesi_249:

(Start: 14 @143197 has 170 MA's), (25, 143287), (35, 143350), (43, 143473), (47, 143497), (58, 143581), (64, 143623), (68, 143665), (85, 143830), (86, 143833), (116, 144088), (124, 144127), (127, 144157), (133, 144220), (135, 144241), (136, 144250), (138, 144253), (143, 144286), (145, 144301), (164, 144436), (180, 144511), (188, 144571),

Gene: Koguma_249 Start: 141996, Stop: 143426, Start Num: 14

Candidate Starts for Koguma_249:

(Start: 14 @141996 has 170 MA's), (25, 142086), (35, 142149), (43, 142272), (47, 142296), (58, 142380), (64, 142422), (68, 142464), (85, 142629), (86, 142632), (116, 142887), (124, 142926), (127, 142956), (133, 143019), (135, 143040), (136, 143049), (138, 143052), (143, 143085), (145, 143100), (164, 143235), (180, 143310), (187, 143367), (188, 143370),

Gene: KristaRAM_31 Start: 27175, Stop: 28344, Start Num: 16

Candidate Starts for KristaRAM_31:

(3, 26902), (4, 26905), (Start: 16 @27175 has 15 MA's), (27, 27259), (41, 27409), (49, 27463), (70, 27604), (92, 27781), (95, 27823), (97, 27832), (112, 27970), (170, 28312), (176, 28333),

Gene: Kumao_37 Start: 32402, Stop: 33853, Start Num: 11

Candidate Starts for Kumao_37:

(Start: 11 @32402 has 1 MA's), (23, 32510), (24, 32519), (44, 32714), (74, 32951), (82, 33023), (89, 33071), (93, 33101), (114, 33278), (118, 33314), (132, 33422), (139, 33467), (141, 33500), (150, 33542), (158, 33626), (163, 33656), (164, 33665), (166, 33677), (167, 33683), (175, 33719), (178, 33728), (180, 33737), (186, 33776), (190, 33806), (194, 33848),

Gene: LRRHood_242 Start: 141406, Stop: 142836, Start Num: 14

Candidate Starts for LRRHood_242:

(Start: 14 @141406 has 170 MA's), (25, 141496), (35, 141559), (43, 141682), (47, 141706), (58, 141790), (64, 141832), (68, 141874), (85, 142039), (86, 142042), (116, 142297), (124, 142336), (127, 142366), (133, 142429), (135, 142450), (136, 142459), (138, 142462), (143, 142495), (145, 142510), (164, 142645), (180, 142720), (187, 142777), (188, 142780),

Gene: Labelle_40 Start: 33850, Stop: 35241, Start Num: 15

Candidate Starts for Labelle_40:

(Start: 15 @33850 has 3 MA's), (Start: 20 @33889 has 14 MA's), (23, 33925), (32, 33985), (37, 34015), (46, 34132), (50, 34156), (65, 34273), (69, 34318), (76, 34393), (77, 34402), (87, 34489), (98, 34561), (107, 34648), (110, 34666), (117, 34738), (121, 34750), (128, 34804), (130, 34816), (132, 34840), (142, 34918), (149, 34951), (151, 34966), (158, 35035), (165, 35074), (172, 35113), (178, 35134), (192, 35233),

Gene: Latch_250 Start: 141959, Stop: 143389, Start Num: 14

Candidate Starts for Latch_250:

(Start: 14 @141959 has 170 MA's), (25, 142049), (35, 142112), (43, 142235), (47, 142259), (58, 142343), (64, 142385), (68, 142427), (85, 142592), (86, 142595), (116, 142850), (124, 142889), (127, 142919), (133, 142982), (135, 143003), (136, 143012), (138, 143015), (143, 143048), (145, 143063), (164, 143198), (180, 143273), (187, 143330), (188, 143333),

Gene: Lee7_251 Start: 145060, Stop: 146490, Start Num: 14

Candidate Starts for Lee7_251:

(Start: 14 @145060 has 170 MA's), (25, 145150), (35, 145213), (43, 145336), (47, 145360), (58, 145444), (64, 145486), (68, 145528), (85, 145693), (86, 145696), (116, 145951), (124, 145990), (127, 146020), (133, 146083), (135, 146104), (136, 146113), (138, 146116), (143, 146149), (145, 146164), (164, 146299), (180, 146374), (187, 146431), (188, 146434),

Gene: LifeSavor_251 Start: 143187, Stop: 144617, Start Num: 14

Candidate Starts for LifeSavor_251:

(Start: 14 @143187 has 170 MA's), (25, 143277), (35, 143340), (43, 143463), (47, 143487), (58, 143571), (64, 143613), (68, 143655), (85, 143820), (86, 143823), (116, 144078), (124, 144117), (127, 144147), (133, 144210), (135, 144231), (136, 144240), (138, 144243), (143, 144276), (145, 144291), (164, 144426), (180, 144501), (187, 144558), (188, 144561),

Gene: LilSpotty_31 Start: 23805, Stop: 24962, Start Num: 16

Candidate Starts for LilSpotty_31:

(Start: 16 @23805 has 15 MA's), (27, 23889), (41, 24039), (49, 24093), (61, 24186), (70, 24237), (80, 24315), (95, 24441), (96, 24447), (99, 24459), (110, 24561), (115, 24603), (129, 24702), (152, 24816),

Gene: LilhomieP_34 Start: 29799, Stop: 31166, Start Num: 20

Candidate Starts for LilhomieP_34:

(Start: 20 @29799 has 14 MA's), (24, 29856), (28, 29883), (35, 29922), (44, 30060), (50, 30084), (57, 30162), (58, 30168), (59, 30171), (68, 30246), (84, 30378), (90, 30405), (91, 30414), (99, 30468), (101, 30495), (104, 30525), (111, 30579), (119, 30651), (142, 30837), (162, 30957), (164, 30978), (167, 30996), (168, 31011), (178, 31041), (183, 31071), (188, 31107), (189, 31110), (193, 31146),

Gene: LinStu_247 Start: 141288, Stop: 142718, Start Num: 14

Candidate Starts for LinStu_247:

(8, 141246), (Start: 14 @141288 has 170 MA's), (25, 141378), (35, 141441), (43, 141564), (47, 141588), (58, 141672), (64, 141714), (68, 141756), (85, 141921), (86, 141924), (116, 142179), (124, 142218), (127, 142248), (133, 142311), (135, 142332), (136, 142341), (138, 142344), (143, 142377), (145, 142392), (164, 142527), (180, 142602), (188, 142662),

Gene: LittleShirley_33 Start: 27885, Stop: 29159, Start Num: 10

Candidate Starts for LittleShirley_33:

(Start: 10 @27885 has 65 MA's), (27, 28005), (36, 28077), (44, 28194), (46, 28197), (55, 28275), (66, 28356), (70, 28398), (79, 28476), (95, 28602), (96, 28608), (97, 28611), (101, 28647), (110, 28722), (115, 28764), (121, 28800), (122, 28803), (128, 28854), (129, 28863), (152, 28977), (155, 29019), (160, 29028), (169, 29085), (170, 29088),

Gene: Littleton_254 Start: 143196, Stop: 144626, Start Num: 14

Candidate Starts for Littleton_254:

(Start: 14 @143196 has 170 MA's), (25, 143286), (35, 143349), (43, 143472), (47, 143496), (58, 143580), (64, 143622), (68, 143664), (85, 143829), (86, 143832), (116, 144087), (124, 144126), (127, 144156), (133, 144219), (135, 144240), (136, 144249), (138, 144252), (143, 144285), (145, 144300), (164, 144435), (180, 144510), (187, 144567), (188, 144570),

Gene: Loanshark_247 Start: 142546, Stop: 143976, Start Num: 14

Candidate Starts for Loanshark_247:

(Start: 14 @142546 has 170 MA's), (25, 142636), (35, 142699), (43, 142822), (47, 142846), (58, 142930), (64, 142972), (68, 143014), (85, 143179), (86, 143182), (116, 143437), (124, 143476), (127, 143506), (133, 143569), (135, 143590), (136, 143599), (138, 143602), (143, 143635), (145, 143650), (164, 143785), (180, 143860), (187, 143917), (188, 143920),

Gene: LolaVinca_246 Start: 142799, Stop: 144229, Start Num: 14

Candidate Starts for LolaVinca_246:

(Start: 14 @142799 has 170 MA's), (25, 142889), (35, 142952), (43, 143075), (47, 143099), (58, 143183), (64, 143225), (68, 143267), (85, 143432), (86, 143435), (116, 143690), (124, 143729), (127, 143759), (133, 143822), (135, 143843), (136, 143852), (138, 143855), (143, 143888), (145, 143903), (164, 144038), (180, 144113), (187, 144170), (188, 144173),

Gene: LordLeafolot_252 Start: 142412, Stop: 143842, Start Num: 14

Candidate Starts for LordLeafolot_252:

(Start: 14 @142412 has 170 MA's), (25, 142502), (26, 142505), (35, 142565), (43, 142688), (47, 142712), (58, 142796), (64, 142838), (68, 142880), (85, 143045), (86, 143048), (116, 143303), (124, 143342), (127, 143372), (133, 143435), (135, 143456), (136, 143465), (138, 143468), (143, 143501), (145, 143516), (164, 143651), (180, 143726), (187, 143783), (188, 143786),

Gene: Lukilu_239 Start: 143415, Stop: 144845, Start Num: 14

Candidate Starts for Lukilu_239:

(Start: 14 @143415 has 170 MA's), (25, 143505), (26, 143508), (35, 143568), (43, 143691), (47, 143715), (58, 143799), (64, 143841), (68, 143883), (85, 144048), (86, 144051), (116, 144306), (124, 144345), (127, 144375), (133, 144438), (135, 144459), (136, 144468), (138, 144471), (143, 144504), (145, 144519), (164, 144654), (180, 144729), (187, 144786), (188, 144789),

Gene: LunaBlu_32 Start: 26697, Stop: 27944, Start Num: 10

Candidate Starts for LunaBlu_32:

(Start: 10 @26697 has 65 MA's), (27, 26817), (36, 26889), (44, 27006), (46, 27009), (55, 27087), (66, 27168), (70, 27210), (79, 27288), (95, 27414), (96, 27420), (101, 27459), (108, 27519), (110, 27534), (115, 27576), (121, 27612), (122, 27615), (128, 27666), (129, 27675), (152, 27789), (155, 27831), (160, 27840), (170, 27900),

Gene: Maby2021_251 Start: 144099, Stop: 145529, Start Num: 14

Candidate Starts for Maby2021_251:

(Start: 14 @144099 has 170 MA's), (25, 144189), (35, 144252), (43, 144375), (47, 144399), (58, 144483), (64, 144525), (68, 144567), (85, 144732), (86, 144735), (116, 144990), (124, 145029), (127, 145059), (133, 145122), (135, 145143), (136, 145152), (138, 145155), (143, 145188), (145, 145203), (164, 145338), (180, 145413), (187, 145470), (188, 145473),

Gene: Madrug_a_39 Start: 33518, Stop: 34909, Start Num: 15

Candidate Starts for Madrug_a_39:

(Start: 15 @33518 has 3 MA's), (Start: 20 @33557 has 14 MA's), (23, 33593), (32, 33653), (37, 33683), (46, 33800), (50, 33824), (65, 33941), (69, 33986), (76, 34061), (77, 34070), (87, 34157), (98, 34229), (107, 34316), (110, 34334), (117, 34406), (121, 34418), (128, 34472), (130, 34484), (132, 34508), (142, 34586), (149, 34619), (151, 34634), (158, 34703), (165, 34742), (172, 34781), (178, 34802), (192, 34901),

Gene: Mahavrat_30 Start: 26287, Stop: 27558, Start Num: 10

Candidate Starts for Mahavrat_30:

(Start: 10 @26287 has 65 MA's), (27, 26404), (36, 26476), (44, 26593), (46, 26596), (55, 26674), (66, 26755), (70, 26797), (79, 26875), (95, 27001), (96, 27007), (103, 27076), (110, 27121), (115, 27163), (121, 27199), (128, 27253), (129, 27262), (152, 27376), (155, 27418), (160, 27427), (169, 27484), (170, 27487),

Gene: Mangeria_250 Start: 143310, Stop: 144740, Start Num: 14

Candidate Starts for Mangeria_250:

(Start: 14 @143310 has 170 MA's), (25, 143400), (35, 143463), (43, 143586), (47, 143610), (58, 143694), (64, 143736), (68, 143778), (85, 143943), (86, 143946), (116, 144201), (124, 144240), (127, 144270), (133, 144333), (135, 144354), (136, 144363), (138, 144366), (143, 144399), (145, 144414), (164, 144549), (180, 144624), (187, 144681), (188, 144684),

Gene: Marker_31 Start: 26193, Stop: 27383, Start Num: 16

Candidate Starts for Marker_31:

(3, 25920), (4, 25923), (Start: 16 @26193 has 15 MA's), (27, 26277), (41, 26427), (49, 26481), (70, 26622), (80, 26700), (95, 26826), (96, 26832), (101, 26871), (108, 26931), (110, 26946), (115, 26988), (121, 27024), (122, 27027), (125, 27042), (128, 27078), (129, 27087), (152, 27201), (155, 27243), (160, 27252), (169, 27309), (170, 27312),

Gene: Matsumoto_248 Start: 142401, Stop: 143831, Start Num: 14

Candidate Starts for Matsumoto_248:

(Start: 14 @142401 has 170 MA's), (25, 142491), (35, 142554), (43, 142677), (47, 142701), (58, 142785), (64, 142827), (68, 142869), (85, 143034), (86, 143037), (116, 143292), (124, 143331), (127, 143361), (133, 143424), (135, 143445), (136, 143454), (138, 143457), (143, 143490), (145, 143505), (164, 143640), (180, 143715), (187, 143772), (188, 143775),

Gene: Mattes_30 Start: 26476, Stop: 27711, Start Num: 10

Candidate Starts for Mattes_30:

(Start: 10 @26476 has 65 MA's), (27, 26593), (36, 26665), (44, 26782), (46, 26785), (55, 26863), (66, 26944), (70, 26986), (79, 27064), (95, 27190), (110, 27310), (115, 27352), (121, 27388), (122, 27391), (128, 27442), (129, 27451), (152, 27565),

Gene: McGee_252 Start: 142747, Stop: 144177, Start Num: 14

Candidate Starts for McGee_252:

(Start: 14 @142747 has 170 MA's), (25, 142837), (35, 142900), (43, 143023), (47, 143047), (58, 143131), (64, 143173), (68, 143215), (85, 143380), (86, 143383), (116, 143638), (124, 143677), (127, 143707), (133, 143770), (135, 143791), (136, 143800), (138, 143803), (143, 143836), (145, 143851), (164, 143986), (180, 144061), (187, 144118), (188, 144121),

Gene: McWolfish_247 Start: 142408, Stop: 143838, Start Num: 14

Candidate Starts for McWolfish_247:

(Start: 14 @142408 has 170 MA's), (25, 142498), (35, 142561), (43, 142684), (47, 142708), (58, 142792), (64, 142834), (68, 142876), (85, 143041), (86, 143044), (116, 143299), (124, 143338), (127, 143368), (133, 143431), (135, 143452), (136, 143461), (138, 143464), (143, 143497), (145, 143512), (164, 143647), (180, 143722), (188, 143782),

Gene: Megamind_247 Start: 142733, Stop: 144163, Start Num: 14

Candidate Starts for Megamind_247:

(Start: 14 @142733 has 170 MA's), (25, 142823), (35, 142886), (43, 143009), (47, 143033), (58, 143117), (64, 143159), (68, 143201), (85, 143366), (86, 143369), (116, 143624), (124, 143663), (127, 143693), (133, 143756), (135, 143777), (136, 143786), (138, 143789), (143, 143822), (145, 143837), (164, 143972), (180, 144047), (187, 144104), (188, 144107),

Gene: Melpomini_245 Start: 141493, Stop: 142923, Start Num: 14

Candidate Starts for Melpomini_245:

(Start: 14 @141493 has 170 MA's), (25, 141583), (35, 141646), (43, 141769), (47, 141793), (58, 141877), (64, 141919), (68, 141961), (85, 142126), (86, 142129), (116, 142384), (124, 142423), (127, 142453), (133, 142516), (135, 142537), (136, 142546), (138, 142549), (143, 142582), (145, 142597), (164, 142732), (180, 142807), (187, 142864), (188, 142867),

Gene: MikeLiesIn_251 Start: 143869, Stop: 145299, Start Num: 14

Candidate Starts for MikeLiesIn_251:

(Start: 14 @143869 has 170 MA's), (25, 143959), (35, 144022), (43, 144145), (47, 144169), (58, 144253), (64, 144295), (68, 144337), (85, 144502), (86, 144505), (116, 144760), (124, 144799), (127, 144829), (133, 144892), (135, 144913), (136, 144922), (138, 144925), (143, 144958), (145, 144973), (164, 145108), (180, 145183), (187, 145240), (188, 145243),

Gene: Mikro_244 Start: 144312, Stop: 145742, Start Num: 14

Candidate Starts for Mikro_244:

(Start: 14 @144312 has 170 MA's), (25, 144402), (26, 144405), (35, 144465), (43, 144588), (47, 144612), (58, 144696), (64, 144738), (68, 144780), (85, 144945), (86, 144948), (116, 145203), (124, 145242), (127, 145272), (133, 145335), (135, 145356), (136, 145365), (138, 145368), (143, 145401), (145, 145416), (164, 145551), (180, 145626), (187, 145683), (188, 145686),

Gene: MinionDave_32 Start: 26855, Stop: 28102, Start Num: 10

Candidate Starts for MinionDave_32:

(Start: 10 @26855 has 65 MA's), (27, 26975), (36, 27047), (44, 27164), (46, 27167), (55, 27245), (66, 27326), (70, 27368), (79, 27446), (95, 27572), (96, 27578), (101, 27617), (108, 27677), (110, 27692), (115, 27734), (121, 27770), (122, 27773), (128, 27824), (129, 27833), (152, 27947), (155, 27989), (160, 27998), (170, 28058),

Gene: Minnie_32 Start: 27202, Stop: 28503, Start Num: 10

Candidate Starts for Minnie_32:

(Start: 10 @27202 has 65 MA's), (27, 27322), (36, 27394), (44, 27511), (46, 27514), (55, 27592), (66, 27673), (70, 27724), (92, 27901), (95, 27943), (97, 27952), (112, 28090), (152, 28321), (155, 28363), (160, 28372), (169, 28429), (170, 28432),

Gene: MisterCuddles_31 Start: 26444, Stop: 27691, Start Num: 10

Candidate Starts for MisterCuddles_31:

(Start: 10 @26444 has 65 MA's), (27, 26564), (36, 26636), (44, 26753), (46, 26756), (55, 26834), (66, 26915), (70, 26957), (79, 27035), (95, 27161), (101, 27206), (108, 27266), (110, 27281), (115, 27323), (121, 27359), (128, 27413), (129, 27422), (152, 27536), (170, 27647),

Gene: MoMoMixon_246 Start: 142828, Stop: 144258, Start Num: 14

Candidate Starts for MoMoMixon_246:

(Start: 14 @142828 has 170 MA's), (25, 142918), (26, 142921), (35, 142981), (43, 143104), (47, 143128), (58, 143212), (64, 143254), (68, 143296), (85, 143461), (86, 143464), (116, 143719), (124, 143758), (127, 143788), (133, 143851), (135, 143872), (136, 143881), (138, 143884), (143, 143917), (145, 143932), (164, 144067), (180, 144142), (187, 144199), (188, 144202),

Gene: Momo_252 Start: 141959, Stop: 143389, Start Num: 14

Candidate Starts for Momo_252:

(Start: 14 @141959 has 170 MA's), (25, 142049), (35, 142112), (43, 142235), (47, 142259), (58, 142343), (64, 142385), (68, 142427), (85, 142592), (86, 142595), (116, 142850), (124, 142889), (127, 142919), (133, 142982), (135, 143003), (136, 143012), (138, 143015), (143, 143048), (145, 143063), (164, 143198), (180, 143273), (187, 143330), (188, 143333),

Gene: Morizzled23_248 Start: 141775, Stop: 143205, Start Num: 14

Candidate Starts for Morizzled23_248:

(Start: 14 @141775 has 170 MA's), (25, 141865), (35, 141928), (43, 142051), (47, 142075), (58, 142159), (64, 142201), (68, 142243), (85, 142408), (86, 142411), (116, 142666), (124, 142705), (127, 142735), (133, 142798), (135, 142819), (136, 142828), (138, 142831), (143, 142864), (145, 142879), (164, 143014), (180, 143089), (187, 143146), (188, 143149),

Gene: Mozy_31 Start: 26391, Stop: 27581, Start Num: 16

Candidate Starts for Mozy_31:

(Start: 16 @26391 has 15 MA's), (27, 26475), (41, 26625), (49, 26679), (61, 26772), (70, 26820), (80, 26898), (95, 27024), (96, 27030), (101, 27069), (110, 27144), (115, 27186), (121, 27222), (128, 27276), (129, 27285), (152, 27399), (155, 27441), (160, 27450), (169, 27507), (170, 27510),

Gene: MrMagoo_40 Start: 30898, Stop: 32313, Start Num: 9

Candidate Starts for MrMagoo_40:

(Start: 9 @30898 has 6 MA's), (17, 30952), (18, 30958), (22, 30988), (24, 31024), (44, 31225), (51, 31255), (54, 31273), (60, 31324), (63, 31339), (70, 31411), (71, 31417), (84, 31528), (90, 31555), (92, 31570), (101, 31645), (105, 31678), (111, 31729), (120, 31807), (142, 31984), (147, 32008), (148, 32011), (162, 32104), (164, 32125), (168, 32158), (183, 32218), (191, 32281),

Gene: Mutaforma13_30 Start: 26510, Stop: 27781, Start Num: 10

Candidate Starts for Mutaforma13_30:

(Start: 10 @26510 has 65 MA's), (27, 26627), (36, 26699), (44, 26816), (46, 26819), (66, 26978), (70, 27020), (79, 27098), (95, 27224), (96, 27230), (97, 27233), (101, 27269), (103, 27299), (110, 27344), (115, 27386), (121, 27422), (128, 27476), (129, 27485), (152, 27599), (155, 27641), (160, 27650), (169, 27707), (170, 27710),

Gene: Naija_251 Start: 142662, Stop: 144092, Start Num: 14

Candidate Starts for Naija_251:

(Start: 14 @142662 has 170 MA's), (25, 142752), (35, 142815), (43, 142938), (47, 142962), (58, 143046), (64, 143088), (68, 143130), (85, 143295), (86, 143298), (116, 143553), (124, 143592), (127, 143622), (133, 143685), (135, 143706), (136, 143715), (138, 143718), (143, 143751), (145, 143766), (164, 143901), (180, 143976), (187, 144033), (188, 144036),

Gene: Nanosmite_40 Start: 30775, Stop: 32142, Start Num: 20

Candidate Starts for Nanosmite_40:

(6, 30640), (Start: 20 @30775 has 14 MA's), (24, 30832), (28, 30859), (35, 30898), (44, 31036), (48, 31045), (50, 31060), (58, 31144), (68, 31222), (70, 31240), (84, 31354), (90, 31381), (92, 31396), (101, 31471), (105, 31504), (112, 31573), (113, 31585), (119, 31627), (132, 31735), (142, 31813), (164, 31954), (167, 31972), (168, 31987), (178, 32017), (183, 32047), (189, 32086), (193, 32122),

Gene: Napoleon13_247 Start: 141691, Stop: 143121, Start Num: 14

Candidate Starts for Napoleon13_247:

(Start: 14 @141691 has 170 MA's), (25, 141781), (35, 141844), (43, 141967), (47, 141991), (58, 142075), (64, 142117), (68, 142159), (85, 142324), (86, 142327), (116, 142582), (124, 142621), (127, 142651), (133, 142714), (135, 142735), (136, 142744), (138, 142747), (143, 142780), (145, 142795), (164, 142930), (180, 143005), (187, 143062), (188, 143065),

Gene: Nappy_249 Start: 143768, Stop: 145198, Start Num: 14

Candidate Starts for Nappy_249:

(Start: 14 @143768 has 170 MA's), (25, 143858), (26, 143861), (35, 143921), (43, 144044), (47, 144068), (58, 144152), (64, 144194), (68, 144236), (85, 144401), (86, 144404), (116, 144659), (124, 144698), (127, 144728), (133, 144791), (135, 144812), (136, 144821), (138, 144824), (143, 144857), (145, 144872), (164, 145007), (180, 145082), (187, 145139), (188, 145142),

Gene: Naval22_255 Start: 144442, Stop: 145872, Start Num: 14

Candidate Starts for Naval22_255:

(Start: 14 @144442 has 170 MA's), (25, 144532), (26, 144535), (35, 144595), (43, 144718), (47, 144742), (58, 144826), (64, 144868), (68, 144910), (85, 145075), (86, 145078), (116, 145333), (124, 145372), (127, 145402), (133, 145465), (135, 145486), (136, 145495), (138, 145498), (143, 145531), (145, 145546), (164, 145681), (180, 145756), (187, 145813), (188, 145816),

Gene: NedWong_249 Start: 143120, Stop: 144550, Start Num: 14

Candidate Starts for NedWong_249:

(Start: 14 @143120 has 170 MA's), (25, 143210), (35, 143273), (43, 143396), (47, 143420), (58, 143504), (64, 143546), (68, 143588), (85, 143753), (86, 143756), (116, 144011), (124, 144050), (127, 144080), (133, 144143), (135, 144164), (136, 144173), (138, 144176), (143, 144209), (145, 144224), (164, 144359), (180, 144434), (187, 144491), (188, 144494),

Gene: Ngannou_245 Start: 141644, Stop: 143074, Start Num: 14

Candidate Starts for Ngannou_245:

(Start: 14 @141644 has 170 MA's), (25, 141734), (35, 141797), (43, 141920), (47, 141944), (58, 142028), (64, 142070), (68, 142112), (85, 142277), (86, 142280), (116, 142535), (124, 142574), (127,

142604), (133, 142667), (135, 142688), (136, 142697), (138, 142700), (143, 142733), (145, 142748), (164, 142883), (180, 142958), (187, 143015), (188, 143018),

Gene: Nidhogg_251 Start: 143488, Stop: 144918, Start Num: 14

Candidate Starts for Nidhogg_251:

(Start: 14 @143488 has 170 MA's), (25, 143578), (26, 143581), (35, 143641), (43, 143764), (47, 143788), (58, 143872), (64, 143914), (68, 143956), (85, 144121), (86, 144124), (116, 144379), (124, 144418), (127, 144448), (133, 144511), (135, 144532), (136, 144541), (138, 144544), (143, 144577), (145, 144592), (164, 144727), (180, 144802), (187, 144859), (188, 144862),

Gene: Nitzel_31 Start: 27046, Stop: 28239, Start Num: 16

Candidate Starts for Nitzel_31:

(Start: 16 @27046 has 15 MA's), (27, 27130), (41, 27280), (49, 27334), (70, 27475), (80, 27556), (95, 27682), (96, 27688), (101, 27727), (110, 27802), (115, 27844), (121, 27880), (128, 27934), (129, 27943), (152, 28057), (155, 28099), (160, 28108), (169, 28165), (170, 28168),

Gene: NoodleTree_246 Start: 138239, Stop: 139669, Start Num: 14

Candidate Starts for NoodleTree_246:

(Start: 14 @138239 has 170 MA's), (25, 138329), (26, 138332), (35, 138392), (43, 138515), (47, 138539), (58, 138623), (64, 138665), (68, 138707), (85, 138872), (86, 138875), (116, 139130), (124, 139169), (127, 139199), (133, 139262), (135, 139283), (136, 139292), (138, 139295), (143, 139328), (145, 139343), (164, 139478), (180, 139553), (188, 139613),

Gene: Norm_250 Start: 143389, Stop: 144819, Start Num: 14

Candidate Starts for Norm_250:

(Start: 14 @143389 has 170 MA's), (25, 143479), (35, 143542), (43, 143665), (47, 143689), (58, 143773), (64, 143815), (68, 143857), (85, 144022), (86, 144025), (116, 144280), (124, 144319), (127, 144349), (133, 144412), (135, 144433), (136, 144442), (138, 144445), (143, 144478), (145, 144493), (164, 144628), (180, 144703), (187, 144760), (188, 144763),

Gene: NuevoMundo_252 Start: 143875, Stop: 145305, Start Num: 14

Candidate Starts for NuevoMundo_252:

(Start: 14 @143875 has 170 MA's), (25, 143965), (35, 144028), (43, 144151), (47, 144175), (58, 144259), (64, 144301), (68, 144343), (85, 144508), (86, 144511), (116, 144766), (124, 144805), (127, 144835), (133, 144898), (135, 144919), (136, 144928), (138, 144931), (143, 144964), (145, 144979), (164, 145114), (180, 145189), (187, 145246), (188, 145249),

Gene: OldBen_30 Start: 26283, Stop: 27554, Start Num: 10

Candidate Starts for OldBen_30:

(Start: 10 @26283 has 65 MA's), (27, 26400), (36, 26472), (44, 26589), (46, 26592), (55, 26670), (66, 26751), (70, 26793), (79, 26871), (95, 26997), (96, 27003), (97, 27006), (110, 27117), (115, 27159), (122, 27198), (125, 27213), (128, 27249), (129, 27258), (152, 27372), (155, 27414), (169, 27480), (170, 27483),

Gene: OlympiaSaint_30 Start: 26699, Stop: 27970, Start Num: 10

Candidate Starts for OlympiaSaint_30:

(Start: 10 @26699 has 65 MA's), (27, 26816), (36, 26888), (44, 27005), (46, 27008), (55, 27086), (66, 27167), (70, 27209), (79, 27287), (95, 27413), (108, 27518), (110, 27533), (115, 27575), (121, 27611), (122, 27614), (128, 27665), (129, 27674), (152, 27788), (155, 27830), (160, 27839), (169, 27896), (170, 27899),

Gene: Ovechkin_30 Start: 26501, Stop: 27664, Start Num: 16

Candidate Starts for Ovechkin_30:

(3, 26228), (4, 26231), (Start: 16 @26501 has 15 MA's), (27, 26585), (41, 26735), (49, 26789), (70, 26930), (80, 27008), (95, 27134), (96, 27140), (101, 27179), (108, 27239), (110, 27254), (115, 27296), (121, 27332), (122, 27335), (125, 27350), (128, 27386), (129, 27395), (152, 27509), (170, 27620),

Gene: ParkTD_249 Start: 142959, Stop: 144389, Start Num: 14

Candidate Starts for ParkTD_249:

(Start: 14 @142959 has 170 MA's), (25, 143049), (35, 143112), (43, 143235), (47, 143259), (58, 143343), (64, 143385), (68, 143427), (85, 143592), (86, 143595), (116, 143850), (124, 143889), (127, 143919), (133, 143982), (135, 144003), (136, 144012), (138, 144015), (143, 144048), (145, 144063), (164, 144198), (180, 144273), (187, 144330), (188, 144333),

Gene: Patience_41 Start: 34399, Stop: 35790, Start Num: 15

Candidate Starts for Patience_41:

(Start: 15 @34399 has 3 MA's), (Start: 20 @34438 has 14 MA's), (23, 34474), (32, 34534), (37, 34564), (46, 34681), (50, 34705), (65, 34822), (69, 34867), (76, 34942), (77, 34951), (87, 35038), (98, 35110), (107, 35197), (110, 35215), (117, 35287), (121, 35299), (128, 35353), (130, 35365), (132, 35389), (142, 35467), (149, 35500), (151, 35515), (158, 35584), (165, 35623), (172, 35662), (178, 35683), (192, 35782),

Gene: Patter_252 Start: 142619, Stop: 144049, Start Num: 14

Candidate Starts for Patter_252:

(Start: 14 @142619 has 170 MA's), (25, 142709), (26, 142712), (35, 142772), (43, 142895), (47, 142919), (58, 143003), (64, 143045), (68, 143087), (85, 143252), (86, 143255), (116, 143510), (124, 143549), (127, 143579), (133, 143642), (135, 143663), (136, 143672), (138, 143675), (143, 143708), (145, 143723), (164, 143858), (180, 143933), (187, 143990), (188, 143993),

Gene: PegLeg_35 Start: 29798, Stop: 31165, Start Num: 20

Candidate Starts for PegLeg_35:

(Start: 20 @29798 has 14 MA's), (24, 29855), (28, 29882), (35, 29921), (44, 30059), (50, 30083), (57, 30161), (58, 30167), (59, 30170), (68, 30245), (84, 30377), (90, 30404), (91, 30413), (99, 30467), (101, 30494), (104, 30524), (111, 30578), (119, 30650), (142, 30836), (162, 30956), (164, 30977), (167, 30995), (168, 31010), (178, 31040), (183, 31070), (188, 31106), (189, 31109), (193, 31145),

Gene: Philus_30 Start: 26322, Stop: 27593, Start Num: 10

Candidate Starts for Philus_30:

(Start: 10 @26322 has 65 MA's), (27, 26439), (36, 26511), (44, 26628), (46, 26631), (55, 26709), (66, 26790), (70, 26832), (79, 26910), (95, 27036), (108, 27141), (110, 27156), (115, 27198), (121, 27234), (122, 27237), (128, 27288), (129, 27297), (152, 27411), (155, 27453), (160, 27462), (169, 27519), (170, 27522),

Gene: Phlegm_255 Start: 143365, Stop: 144795, Start Num: 14

Candidate Starts for Phlegm_255:

(Start: 14 @143365 has 170 MA's), (25, 143455), (35, 143518), (43, 143641), (47, 143665), (58, 143749), (64, 143791), (68, 143833), (85, 143998), (86, 144001), (116, 144256), (124, 144295), (127, 144325), (133, 144388), (135, 144409), (136, 144418), (138, 144421), (143, 144454), (145, 144469), (164, 144604), (180, 144679), (187, 144736), (188, 144739),

Gene: Phox_251 Start: 142614, Stop: 144044, Start Num: 14

Candidate Starts for Phox_251:

(Start: 14 @142614 has 170 MA's), (25, 142704), (35, 142767), (43, 142890), (47, 142914), (58, 142998), (64, 143040), (68, 143082), (85, 143247), (86, 143250), (116, 143505), (124, 143544), (127, 143574), (133, 143637), (135, 143658), (136, 143667), (138, 143670), (143, 143703), (145, 143718), (164, 143853), (180, 143928), (187, 143985), (188, 143988),

Gene: Phusco_249 Start: 142197, Stop: 143627, Start Num: 14

Candidate Starts for Phusco_249:

(Start: 14 @142197 has 170 MA's), (25, 142287), (35, 142350), (43, 142473), (47, 142497), (58, 142581), (64, 142623), (68, 142665), (85, 142830), (86, 142833), (116, 143088), (124, 143127), (127, 143157), (133, 143220), (135, 143241), (136, 143250), (138, 143253), (143, 143286), (145, 143301), (164, 143436), (180, 143511), (187, 143568), (188, 143571),

Gene: Pier_249 Start: 143490, Stop: 144920, Start Num: 14

Candidate Starts for Pier_249:

(Start: 14 @143490 has 170 MA's), (25, 143580), (35, 143643), (43, 143766), (47, 143790), (58, 143874), (64, 143916), (68, 143958), (85, 144123), (86, 144126), (116, 144381), (124, 144420), (127, 144450), (133, 144513), (135, 144534), (136, 144543), (138, 144546), (143, 144579), (145, 144594), (164, 144729), (180, 144804), (187, 144861), (188, 144864),

Gene: Pinkcreek_230 Start: 139816, Stop: 141246, Start Num: 14

Candidate Starts for Pinkcreek_230:

(8, 139774), (Start: 14 @139816 has 170 MA's), (25, 139906), (35, 139969), (43, 140092), (47, 140116), (58, 140200), (64, 140242), (68, 140284), (85, 140449), (86, 140452), (116, 140707), (124, 140746), (127, 140776), (133, 140839), (135, 140860), (136, 140869), (138, 140872), (143, 140905), (145, 140920), (164, 141055), (180, 141130), (188, 141190),

Gene: Pio_257 Start: 144693, Stop: 146123, Start Num: 14

Candidate Starts for Pio_257:

(Start: 14 @144693 has 170 MA's), (25, 144783), (35, 144846), (43, 144969), (47, 144993), (58, 145077), (64, 145119), (68, 145161), (85, 145326), (86, 145329), (116, 145584), (124, 145623), (127, 145653), (133, 145716), (135, 145737), (136, 145746), (138, 145749), (143, 145782), (145, 145797), (164, 145932), (180, 146007), (187, 146064), (188, 146067),

Gene: Pivoine_251 Start: 142662, Stop: 144092, Start Num: 14

Candidate Starts for Pivoine_251:

(Start: 14 @142662 has 170 MA's), (25, 142752), (35, 142815), (43, 142938), (47, 142962), (58, 143046), (64, 143088), (68, 143130), (85, 143295), (86, 143298), (116, 143553), (124, 143592), (127, 143622), (133, 143685), (135, 143706), (136, 143715), (138, 143718), (143, 143751), (145, 143766), (164, 143901), (180, 143976), (187, 144033), (188, 144036),

Gene: Pleione_254 Start: 143425, Stop: 144855, Start Num: 14

Candidate Starts for Pleione_254:

(Start: 14 @143425 has 170 MA's), (25, 143515), (35, 143578), (43, 143701), (47, 143725), (58, 143809), (64, 143851), (68, 143893), (85, 144058), (86, 144061), (116, 144316), (124, 144355), (127, 144385), (133, 144448), (135, 144469), (136, 144478), (138, 144481), (143, 144514), (145, 144529), (164, 144664), (180, 144739), (187, 144796), (188, 144799),

Gene: Plumbus_32 Start: 26320, Stop: 27594, Start Num: 10

Candidate Starts for Plumbus_32:

(Start: 10 @26320 has 65 MA's), (27, 26440), (36, 26512), (44, 26629), (46, 26632), (55, 26710), (66, 26791), (70, 26833), (79, 26911), (95, 27037), (96, 27043), (97, 27046), (101, 27082), (110, 27157), (115, 27199), (121, 27235), (129, 27298), (152, 27412), (155, 27454), (160, 27463), (169, 27520), (170, 27523),

Gene: Polka14_31 Start: 26869, Stop: 28140, Start Num: 10

Candidate Starts for Polka14_31:

(3, 26596), (5, 26617), (Start: 10 @26869 has 65 MA's), (27, 26986), (36, 27058), (44, 27175), (46, 27178), (55, 27256), (66, 27337), (70, 27379), (79, 27457), (95, 27583), (96, 27589), (97, 27592), (110, 27703), (115, 27745), (122, 27784), (125, 27799), (128, 27835), (129, 27844), (152, 27958), (155, 28000), (160, 28009), (169, 28066), (170, 28069),

Gene: Pollywog_30 Start: 26566, Stop: 27849, Start Num: 10

Candidate Starts for Pollywog_30:

(Start: 10 @26566 has 65 MA's), (27, 26683), (36, 26755), (44, 26872), (46, 26875), (55, 26953), (66, 27034), (70, 27085), (79, 27163), (95, 27289), (96, 27295), (101, 27334), (110, 27409), (115, 27451), (122, 27490), (128, 27541), (129, 27550), (152, 27667), (155, 27709), (160, 27718), (169, 27775), (170, 27778),

Gene: Priscilla_30 Start: 26513, Stop: 27784, Start Num: 10

Candidate Starts for Priscilla_30:

(Start: 10 @26513 has 65 MA's), (27, 26630), (36, 26702), (44, 26819), (46, 26822), (55, 26900), (66, 26981), (70, 27023), (79, 27101), (95, 27227), (108, 27332), (110, 27347), (115, 27389), (121, 27425), (122, 27428), (128, 27479), (129, 27488), (152, 27602), (155, 27644), (160, 27653), (169, 27710), (170, 27713),

Gene: PurduePete_251 Start: 144139, Stop: 145569, Start Num: 14

Candidate Starts for PurduePete_251:

(Start: 14 @144139 has 170 MA's), (25, 144229), (35, 144292), (43, 144415), (47, 144439), (58, 144523), (64, 144565), (68, 144607), (85, 144772), (86, 144775), (116, 145030), (124, 145069), (127, 145099), (133, 145162), (135, 145183), (136, 145192), (138, 145195), (143, 145228), (145, 145243), (164, 145378), (180, 145453), (188, 145513),

Gene: QBert_242 Start: 141012, Stop: 142442, Start Num: 14

Candidate Starts for QBert_242:

(Start: 14 @141012 has 170 MA's), (25, 141102), (35, 141165), (43, 141288), (47, 141312), (58, 141396), (64, 141438), (68, 141480), (85, 141645), (86, 141648), (116, 141903), (124, 141942), (127, 141972), (133, 142035), (135, 142056), (136, 142065), (138, 142068), (143, 142101), (145, 142116), (164, 142251), (180, 142326), (187, 142383), (188, 142386),

Gene: Quasimodo_253 Start: 142998, Stop: 144428, Start Num: 14

Candidate Starts for Quasimodo_253:

(Start: 14 @142998 has 170 MA's), (25, 143088), (35, 143151), (43, 143274), (47, 143298), (58, 143382), (64, 143424), (68, 143466), (85, 143631), (86, 143634), (116, 143889), (124, 143928), (127, 143958), (133, 144021), (135, 144042), (136, 144051), (138, 144054), (143, 144087), (145, 144102), (164, 144237), (180, 144312), (187, 144369), (188, 144372),

Gene: Rabinovish_243 Start: 141502, Stop: 142932, Start Num: 14

Candidate Starts for Rabinovish_243:

(Start: 14 @141502 has 170 MA's), (35, 141655), (43, 141778), (47, 141802), (58, 141886), (64, 141928), (68, 141970), (85, 142135), (86, 142138), (116, 142393), (124, 142432), (127, 142462), (133, 142525), (135, 142546), (136, 142555), (138, 142558), (143, 142591), (145, 142606), (164, 142741), (180, 142816), (187, 142873), (188, 142876),

Gene: Radiance_30 Start: 26421, Stop: 27692, Start Num: 10

Candidate Starts for Radiance_30:

(Start: 10 @26421 has 65 MA's), (27, 26538), (36, 26610), (44, 26727), (46, 26730), (55, 26808), (66, 26889), (70, 26931), (79, 27009), (95, 27135), (108, 27240), (110, 27255), (115, 27297), (121, 27333), (122, 27336), (128, 27387), (129, 27396), (152, 27510), (155, 27552), (160, 27561), (169, 27618), (170, 27621),

Gene: Rahel_252 Start: 143100, Stop: 144530, Start Num: 14

Candidate Starts for Rahel_252:

(Start: 14 @143100 has 170 MA's), (25, 143190), (35, 143253), (43, 143376), (47, 143400), (58, 143484), (64, 143526), (68, 143568), (85, 143733), (86, 143736), (116, 143991), (124, 144030), (127, 144060), (133, 144123), (135, 144144), (136, 144153), (138, 144156), (143, 144189), (145, 144204), (164, 144339), (180, 144414), (187, 144471), (188, 144474),

Gene: Ramsey_32 Start: 26518, Stop: 27765, Start Num: 10

Candidate Starts for Ramsey_32:

(Start: 10 @26518 has 65 MA's), (27, 26638), (36, 26710), (44, 26827), (46, 26830), (55, 26908), (66, 26989), (70, 27031), (79, 27109), (95, 27235), (96, 27241), (97, 27244), (110, 27355), (115, 27397), (122, 27436), (125, 27451), (128, 27487), (129, 27496), (152, 27610), (170, 27721),

Gene: Reindeer_35 Start: 30311, Stop: 31678, Start Num: 20

Candidate Starts for Reindeer_35:

(Start: 20 @30311 has 14 MA's), (21, 30320), (24, 30368), (28, 30395), (35, 30434), (44, 30572), (47, 30578), (48, 30581), (50, 30596), (52, 30614), (56, 30668), (57, 30674), (58, 30680), (59, 30683), (68, 30758), (78, 30860), (84, 30890), (90, 30917), (92, 30932), (98, 30977), (99, 30980), (101, 31007), (105, 31040), (109, 31076), (112, 31109), (119, 31163), (120, 31169), (126, 31199), (131, 31247), (132, 31271), (142, 31349), (161, 31463), (162, 31469), (164, 31490), (167, 31508), (168, 31523), (183, 31583), (188, 31619), (189, 31622), (193, 31658),

Gene: Rey_40 Start: 31173, Stop: 32588, Start Num: 9

Candidate Starts for Rey_40:

(Start: 9 @31173 has 6 MA's), (17, 31227), (18, 31233), (22, 31263), (24, 31299), (44, 31500), (51, 31530), (60, 31599), (63, 31614), (68, 31668), (70, 31686), (71, 31692), (84, 31803), (90, 31830), (92, 31845), (105, 31953), (111, 32004), (120, 32082), (142, 32259), (147, 32283), (148, 32286), (161, 32373), (162, 32379), (164, 32400), (168, 32433), (183, 32493), (191, 32556),

Gene: Rialto_34 Start: 28576, Stop: 29850, Start Num: 10

Candidate Starts for Rialto_34:

(Start: 10 @28576 has 65 MA's), (27, 28696), (36, 28768), (44, 28885), (46, 28888), (55, 28966), (66, 29047), (70, 29089), (79, 29167), (95, 29293), (96, 29299), (97, 29302), (101, 29338), (110, 29413), (115, 29455), (121, 29491), (122, 29494), (128, 29545), (129, 29554), (152, 29668), (155, 29710), (160, 29719), (169, 29776), (170, 29779),

Gene: Rita_31 Start: 26482, Stop: 27774, Start Num: 10

Candidate Starts for Rita_31:

(Start: 10 @26482 has 65 MA's), (27, 26602), (44, 26791), (46, 26794), (55, 26872), (66, 26953), (70, 26995), (79, 27073), (95, 27199), (96, 27205), (101, 27244), (108, 27304), (110, 27319), (115, 27361), (121, 27397), (122, 27400), (125, 27415), (128, 27451), (129, 27460), (152, 27574), (170, 27685),

Gene: RitaG_31 Start: 26686, Stop: 27960, Start Num: 10

Candidate Starts for RitaG_31:

(Start: 10 @26686 has 65 MA's), (27, 26806), (44, 26995), (46, 26998), (55, 27076), (66, 27157), (70, 27199), (79, 27277), (95, 27403), (96, 27409), (101, 27448), (108, 27508), (110, 27523), (113, 27559), (115, 27565), (121, 27601), (125, 27619), (128, 27655), (129, 27664), (152, 27778), (155, 27820), (169, 27886), (170, 27889),

Gene: Rizal_239 Start: 140915, Stop: 142345, Start Num: 14

Candidate Starts for Rizal_239:

(Start: 14 @140915 has 170 MA's), (25, 141005), (35, 141068), (43, 141191), (47, 141215), (58, 141299), (64, 141341), (68, 141383), (85, 141548), (86, 141551), (116, 141806), (124, 141845), (127, 141875), (133, 141938), (135, 141959), (136, 141968), (138, 141971), (143, 142004), (145, 142019), (164, 142154), (180, 142229), (187, 142286), (188, 142289),

Gene: RoMag_245 Start: 142696, Stop: 144126, Start Num: 14

Candidate Starts for RoMag_245:

(Start: 14 @142696 has 170 MA's), (25, 142786), (26, 142789), (35, 142849), (43, 142972), (47, 142996), (58, 143080), (64, 143122), (68, 143164), (85, 143329), (86, 143332), (116, 143587), (124, 143626), (127, 143656), (133, 143719), (135, 143740), (136, 143749), (138, 143752), (143, 143785), (145, 143800), (164, 143935), (180, 144010), (187, 144067), (188, 144070),

Gene: Ronan_246 Start: 141077, Stop: 142507, Start Num: 14

Candidate Starts for Ronan_246:

(8, 141035), (Start: 14 @141077 has 170 MA's), (25, 141167), (35, 141230), (43, 141353), (47, 141377), (58, 141461), (64, 141503), (68, 141545), (85, 141710), (86, 141713), (116, 141968), (124, 142007), (127, 142037), (133, 142100), (135, 142121), (136, 142130), (138, 142133), (143, 142166), (145, 142181), (164, 142316), (180, 142391), (188, 142451),

Gene: Roots515_253 Start: 144241, Stop: 145671, Start Num: 14

Candidate Starts for Roots515_253:

(Start: 14 @144241 has 170 MA's), (25, 144331), (35, 144394), (43, 144517), (47, 144541), (58, 144625), (64, 144667), (68, 144709), (85, 144874), (86, 144877), (116, 145132), (124, 145171), (127, 145201), (133, 145264), (135, 145285), (136, 145294), (138, 145297), (143, 145330), (145, 145345), (164, 145480), (180, 145555), (187, 145612), (188, 145615),

Gene: Royals2015_30 Start: 26424, Stop: 27614, Start Num: 16

Candidate Starts for Royals2015_30:

(3, 26151), (5, 26172), (Start: 16 @26424 has 15 MA's), (27, 26508), (41, 26658), (49, 26712), (61, 26805), (70, 26853), (80, 26931), (95, 27057), (96, 27063), (101, 27102), (108, 27162), (110, 27177), (115, 27219), (121, 27255), (122, 27258), (128, 27309), (129, 27318), (152, 27432), (155, 27474), (160, 27483), (169, 27540), (170, 27543),

Gene: Ruby_31 Start: 26444, Stop: 27691, Start Num: 10

Candidate Starts for Ruby_31:

(Start: 10 @26444 has 65 MA's), (27, 26564), (36, 26636), (44, 26753), (46, 26756), (55, 26834), (66, 26915), (70, 26957), (79, 27035), (95, 27161), (101, 27206), (108, 27266), (110, 27281), (115, 27323), (121, 27359), (128, 27413), (129, 27422), (152, 27536), (170, 27647),

Gene: Saal_30 Start: 26300, Stop: 27571, Start Num: 10

Candidate Starts for Saal_30:

(Start: 10 @26300 has 65 MA's), (27, 26417), (36, 26489), (44, 26606), (46, 26609), (55, 26687), (66, 26768), (70, 26810), (79, 26888), (95, 27014), (108, 27119), (110, 27134), (115, 27176), (121, 27212), (122, 27215), (128, 27266), (129, 27275), (152, 27389), (155, 27431), (160, 27440), (169, 27497), (170, 27500),

Gene: Sabbb_31 Start: 26645, Stop: 27916, Start Num: 10

Candidate Starts for Sabbb_31:

(Start: 10 @26645 has 65 MA's), (27, 26762), (36, 26834), (44, 26951), (46, 26954), (55, 27032), (66, 27113), (70, 27155), (79, 27233), (87, 27287), (95, 27359), (110, 27479), (115, 27521), (121, 27557), (128, 27611), (129, 27620), (152, 27734), (155, 27776), (160, 27785), (169, 27842), (170, 27845),

Gene: Salacia_252 Start: 144565, Stop: 145995, Start Num: 14

Candidate Starts for Salacia_252:

(Start: 14 @144565 has 170 MA's), (25, 144655), (35, 144718), (43, 144841), (47, 144865), (58, 144949), (64, 144991), (68, 145033), (85, 145198), (86, 145201), (116, 145456), (124, 145495), (127, 145525), (133, 145588), (135, 145609), (136, 145618), (138, 145621), (143, 145654), (145, 145669), (164, 145804), (180, 145879), (187, 145936), (188, 145939),

Gene: Sandalphon_31 Start: 27031, Stop: 28302, Start Num: 10

Candidate Starts for Sandalphon_31:

(Start: 10 @27031 has 65 MA's), (27, 27148), (36, 27220), (44, 27337), (46, 27340), (55, 27418), (66, 27499), (70, 27541), (79, 27619), (95, 27745), (96, 27751), (97, 27754), (110, 27865), (115, 27907), (122, 27946), (125, 27961), (128, 27997), (129, 28006), (152, 28120), (155, 28162), (169, 28228), (170, 28231),

Gene: Sarma624_26 Start: 22498, Stop: 23733, Start Num: 10

Candidate Starts for Sarma624_26:

(Start: 10 @22498 has 65 MA's), (27, 22618), (36, 22690), (44, 22807), (46, 22810), (55, 22888), (66, 22969), (70, 23011), (79, 23089), (95, 23215), (96, 23221), (101, 23260), (108, 23320), (110, 23335), (115, 23377), (121, 23413), (122, 23416), (128, 23467), (129, 23476), (152, 23590), (170, 23701), (176, 23722),

Gene: Sassafras_30 Start: 26444, Stop: 27607, Start Num: 16

Candidate Starts for Sassafras_30:

(Start: 16 @26444 has 15 MA's), (27, 26528), (41, 26678), (49, 26732), (70, 26873), (80, 26951), (95, 27077), (96, 27083), (101, 27122), (108, 27182), (110, 27197), (115, 27239), (121, 27275), (122, 27278), (128, 27329), (129, 27338), (152, 27452),

Gene: Sauce_247 Start: 142424, Stop: 143854, Start Num: 14

Candidate Starts for Sauce_247:

(Start: 14 @142424 has 170 MA's), (25, 142514), (35, 142577), (43, 142700), (47, 142724), (58, 142808), (64, 142850), (68, 142892), (85, 143057), (86, 143060), (116, 143315), (124, 143354), (127, 143384), (133, 143447), (135, 143468), (136, 143477), (138, 143480), (143, 143513), (145, 143528), (164, 143663), (180, 143738), (187, 143795), (188, 143798),

Gene: ScottMcG_242 Start: 141625, Stop: 143055, Start Num: 14

Candidate Starts for ScottMcG_242:

(Start: 14 @141625 has 170 MA's), (25, 141715), (35, 141778), (43, 141901), (47, 141925), (58, 142009), (64, 142051), (68, 142093), (85, 142258), (86, 142261), (116, 142516), (124, 142555), (127, 142585), (133, 142648), (135, 142669), (136, 142678), (138, 142681), (143, 142714), (145, 142729), (164, 142864), (180, 142939), (187, 142996), (188, 142999),

Gene: Sebata_250 Start: 143284, Stop: 144714, Start Num: 14

Candidate Starts for Sebata_250:

(Start: 14 @143284 has 170 MA's), (25, 143374), (35, 143437), (43, 143560), (47, 143584), (58, 143668), (64, 143710), (68, 143752), (85, 143917), (86, 143920), (116, 144175), (124, 144214), (127, 144244), (133, 144307), (135, 144328), (136, 144337), (138, 144340), (143, 144373), (145, 144388), (164, 144523), (180, 144598), (188, 144658),

Gene: Shaqnato_241 Start: 141833, Stop: 143263, Start Num: 14

Candidate Starts for Shaqnato_241:

(Start: 14 @141833 has 170 MA's), (25, 141923), (35, 141986), (43, 142109), (47, 142133), (58, 142217), (64, 142259), (68, 142301), (85, 142466), (86, 142469), (116, 142724), (124, 142763), (127, 142793), (133, 142856), (135, 142877), (136, 142886), (138, 142889), (143, 142922), (145, 142937), (164, 143072), (180, 143147), (188, 143207),

Gene: Shelob_251 Start: 144559, Stop: 145989, Start Num: 14

Candidate Starts for Shelob_251:

(Start: 14 @144559 has 170 MA's), (25, 144649), (35, 144712), (43, 144835), (47, 144859), (58, 144943), (64, 144985), (68, 145027), (85, 145192), (86, 145195), (116, 145450), (124, 145489), (127, 145519), (133, 145582), (135, 145603), (136, 145612), (138, 145615), (143, 145648), (145, 145663), (164, 145798), (180, 145873), (187, 145930), (188, 145933),

Gene: ShiaLabeouf_248 Start: 142418, Stop: 143848, Start Num: 14

Candidate Starts for ShiaLabeouf_248:

(Start: 14 @142418 has 170 MA's), (25, 142508), (35, 142571), (43, 142694), (47, 142718), (58, 142802), (64, 142844), (68, 142886), (85, 143051), (86, 143054), (116, 143309), (124, 143348), (127, 143378), (133, 143441), (135, 143462), (136, 143471), (138, 143474), (143, 143507), (145, 143522), (164, 143657), (180, 143732), (187, 143789), (188, 143792),

Gene: Shifa_226 Start: 141892, Stop: 143322, Start Num: 14

Candidate Starts for Shifa_226:

(Start: 14 @141892 has 170 MA's), (25, 141982), (35, 142045), (43, 142168), (47, 142192), (58, 142276), (64, 142318), (68, 142360), (85, 142525), (86, 142528), (116, 142783), (124, 142822), (127, 142852), (133, 142915), (135, 142936), (136, 142945), (138, 142948), (143, 142981), (145, 142996), (164, 143131), (180, 143206), (188, 143266),

Gene: Shnickers_249 Start: 142482, Stop: 143912, Start Num: 14

Candidate Starts for Shnickers_249:

(Start: 14 @142482 has 170 MA's), (25, 142572), (35, 142635), (43, 142758), (47, 142782), (58, 142866), (64, 142908), (68, 142950), (85, 143115), (86, 143118), (116, 143373), (124, 143412), (127, 143442), (133, 143505), (135, 143526), (136, 143535), (138, 143538), (143, 143571), (145, 143586), (164, 143721), (180, 143796), (187, 143853), (188, 143856),

Gene: Shrimp_253 Start: 144176, Stop: 145606, Start Num: 14

Candidate Starts for Shrimp_253:

(Start: 14 @144176 has 170 MA's), (25, 144266), (35, 144329), (43, 144452), (47, 144476), (58, 144560), (64, 144602), (68, 144644), (85, 144809), (86, 144812), (116, 145067), (124, 145106), (127, 145136), (133, 145199), (135, 145220), (136, 145229), (138, 145232), (143, 145265), (145, 145280), (164, 145415), (180, 145490), (187, 145547), (188, 145550),

Gene: SilverDipper_255 Start: 143218, Stop: 144648, Start Num: 14

Candidate Starts for SilverDipper_255:

(Start: 14 @143218 has 170 MA's), (25, 143308), (35, 143371), (43, 143494), (47, 143518), (58, 143602), (64, 143644), (68, 143686), (85, 143851), (86, 143854), (116, 144109), (124, 144148), (127, 144178), (133, 144241), (135, 144262), (136, 144271), (138, 144274), (143, 144307), (145, 144322), (164, 144457), (180, 144532), (187, 144589), (188, 144592),

Gene: SimranZ1_33 Start: 26526, Stop: 27818, Start Num: 10

Candidate Starts for SimranZ1_33:

(Start: 10 @26526 has 65 MA's), (27, 26646), (36, 26718), (44, 26835), (46, 26838), (55, 26916), (66, 26997), (70, 27039), (92, 27216), (95, 27258), (97, 27267), (115, 27423), (152, 27636), (155, 27678), (160, 27687), (169, 27744), (170, 27747),

Gene: Skinny_36 Start: 30228, Stop: 31595, Start Num: 20

Candidate Starts for Skinny_36:

(Start: 20 @30228 has 14 MA's), (24, 30285), (28, 30312), (35, 30351), (44, 30489), (50, 30513), (57, 30591), (58, 30597), (59, 30600), (68, 30675), (84, 30807), (90, 30834), (91, 30843), (99, 30897),

(101, 30924), (104, 30954), (111, 31008), (119, 31080), (142, 31266), (162, 31386), (164, 31407), (167, 31425), (168, 31440), (178, 31470), (183, 31500), (188, 31536), (189, 31539), (193, 31575),

Gene: SlimJimmy_34 Start: 29782, Stop: 31149, Start Num: 20

Candidate Starts for SlimJimmy_34:

(Start: 20 @29782 has 14 MA's), (24, 29839), (28, 29866), (30, 29881), (33, 29902), (35, 29905), (44, 30043), (50, 30067), (57, 30145), (58, 30151), (59, 30154), (68, 30229), (84, 30361), (90, 30388), (91, 30397), (99, 30451), (101, 30478), (104, 30508), (111, 30562), (119, 30634), (142, 30820), (162, 30940), (164, 30961), (167, 30979), (168, 30994), (178, 31024), (183, 31054), (188, 31090), (189, 31093), (193, 31129),

Gene: SmallFry_251 Start: 142576, Stop: 144006, Start Num: 14

Candidate Starts for SmallFry_251:

(Start: 14 @142576 has 170 MA's), (25, 142666), (35, 142729), (43, 142852), (47, 142876), (58, 142960), (64, 143002), (68, 143044), (85, 143209), (86, 143212), (116, 143467), (124, 143506), (127, 143536), (133, 143599), (135, 143620), (136, 143629), (138, 143632), (143, 143665), (145, 143680), (164, 143815), (180, 143890), (187, 143947), (188, 143950),

Gene: Sparkdehlily_30 Start: 26346, Stop: 27617, Start Num: 10

Candidate Starts for Sparkdehlily_30:

(Start: 10 @26346 has 65 MA's), (27, 26463), (36, 26535), (44, 26652), (46, 26655), (55, 26733), (66, 26814), (70, 26856), (79, 26934), (95, 27060), (108, 27165), (110, 27180), (115, 27222), (121, 27258), (122, 27261), (128, 27312), (129, 27321), (152, 27435), (155, 27477), (160, 27486), (169, 27543), (170, 27546),

Gene: Spartacus_32 Start: 26738, Stop: 28030, Start Num: 10

Candidate Starts for Spartacus_32:

(Start: 10 @26738 has 65 MA's), (27, 26858), (44, 27047), (46, 27050), (55, 27128), (66, 27209), (70, 27251), (79, 27329), (95, 27455), (96, 27461), (101, 27500), (108, 27560), (110, 27575), (113, 27611), (115, 27617), (121, 27653), (125, 27671), (128, 27707), (129, 27716), (152, 27830), (170, 27941),

Gene: Spec_244 Start: 142588, Stop: 144018, Start Num: 14

Candidate Starts for Spec_244:

(Start: 14 @142588 has 170 MA's), (25, 142678), (35, 142741), (43, 142864), (47, 142888), (58, 142972), (64, 143014), (68, 143056), (85, 143221), (86, 143224), (116, 143479), (124, 143518), (127, 143548), (133, 143611), (135, 143632), (136, 143641), (138, 143644), (143, 143677), (145, 143692), (164, 143827), (180, 143902), (187, 143959), (188, 143962),

Gene: Specks_255 Start: 143516, Stop: 144946, Start Num: 14

Candidate Starts for Specks_255:

(Start: 14 @143516 has 170 MA's), (25, 143606), (35, 143669), (43, 143792), (47, 143816), (58, 143900), (64, 143942), (68, 143984), (85, 144149), (86, 144152), (116, 144407), (124, 144446), (127, 144476), (133, 144539), (135, 144560), (136, 144569), (138, 144572), (143, 144605), (145, 144620), (164, 144755), (180, 144830), (187, 144887), (188, 144890),

Gene: Spikelee_32 Start: 26496, Stop: 27770, Start Num: 10

Candidate Starts for Spikelee_32:

(Start: 10 @26496 has 65 MA's), (27, 26616), (36, 26688), (44, 26805), (46, 26808), (55, 26886), (66, 26967), (70, 27009), (79, 27087), (95, 27213), (96, 27219), (97, 27222), (101, 27258), (103, 27288), (108, 27318), (110, 27333), (115, 27375), (121, 27411), (122, 27414), (128, 27465), (129, 27474), (152, 27588), (155, 27630), (160, 27639), (169, 27696), (170, 27699),

Gene: Spoonbill_30 Start: 26510, Stop: 27781, Start Num: 10

Candidate Starts for Spoonbill_30:

(Start: 10 @26510 has 65 MA's), (27, 26627), (36, 26699), (44, 26816), (46, 26819), (55, 26897), (66, 26978), (70, 27020), (79, 27098), (95, 27224), (108, 27329), (110, 27344), (115, 27386), (121, 27422), (122, 27425), (128, 27476), (129, 27485), (152, 27599), (155, 27641), (160, 27650), (169, 27707), (170, 27710),

Gene: Sprinklers_248 Start: 142284, Stop: 143714, Start Num: 14

Candidate Starts for Sprinklers_248:

(Start: 14 @142284 has 170 MA's), (25, 142374), (35, 142437), (43, 142560), (47, 142584), (58, 142668), (64, 142710), (68, 142752), (85, 142917), (86, 142920), (116, 143175), (124, 143214), (127, 143244), (133, 143307), (135, 143328), (136, 143337), (138, 143340), (143, 143373), (145, 143388), (164, 143523), (180, 143598), (187, 143655), (188, 143658),

Gene: Spud_242 Start: 142033, Stop: 143463, Start Num: 14

Candidate Starts for Spud_242:

(Start: 14 @142033 has 170 MA's), (25, 142123), (35, 142186), (43, 142309), (47, 142333), (58, 142417), (64, 142459), (68, 142501), (85, 142666), (86, 142669), (116, 142924), (124, 142963), (127, 142993), (133, 143056), (135, 143077), (136, 143086), (138, 143089), (143, 143122), (145, 143137), (164, 143272), (180, 143347), (187, 143404), (188, 143407),

Gene: SrishMeg2525_248 Start: 143671, Stop: 145101, Start Num: 14

Candidate Starts for SrishMeg2525_248:

(Start: 14 @143671 has 170 MA's), (25, 143761), (35, 143824), (43, 143947), (47, 143971), (58, 144055), (64, 144097), (68, 144139), (85, 144304), (86, 144307), (116, 144562), (124, 144601), (127, 144631), (133, 144694), (135, 144715), (136, 144724), (138, 144727), (143, 144760), (145, 144775), (164, 144910), (180, 144985), (187, 145042), (188, 145045),

Gene: Stap_31 Start: 26476, Stop: 27678, Start Num: 16

Candidate Starts for Stap_31:

(Start: 16 @26476 has 15 MA's), (27, 26560), (41, 26710), (49, 26764), (70, 26905), (80, 26983), (95, 27109), (96, 27115), (101, 27154), (108, 27214), (110, 27229), (115, 27271), (121, 27307), (122, 27310), (128, 27361), (129, 27370), (155, 27535), (162, 27553), (170, 27604), (173, 27613),

Gene: StephanieG_244 Start: 143219, Stop: 144649, Start Num: 14

Candidate Starts for StephanieG_244:

(Start: 14 @143219 has 170 MA's), (25, 143309), (26, 143312), (35, 143372), (43, 143495), (47, 143519), (58, 143603), (64, 143645), (68, 143687), (85, 143852), (86, 143855), (116, 144110), (124, 144149), (127, 144179), (133, 144242), (135, 144263), (136, 144272), (138, 144275), (143, 144308), (145, 144323), (164, 144458), (180, 144533), (187, 144590), (188, 144593),

Gene: Stubby_233 Start: 140004, Stop: 141434, Start Num: 14

Candidate Starts for Stubby_233:

(8, 139962), (Start: 14 @140004 has 170 MA's), (25, 140094), (35, 140157), (43, 140280), (47, 140304), (58, 140388), (64, 140430), (68, 140472), (85, 140637), (86, 140640), (116, 140895), (124, 140934), (127, 140964), (133, 141027), (135, 141048), (136, 141057), (138, 141060), (143, 141093), (145, 141108), (164, 141243), (180, 141318), (188, 141378),

Gene: StubbySaigey_257 Start: 143201, Stop: 144631, Start Num: 14

Candidate Starts for StubbySaigey_257:

(Start: 14 @143201 has 170 MA's), (25, 143291), (35, 143354), (43, 143477), (47, 143501), (58, 143585), (64, 143627), (68, 143669), (85, 143834), (86, 143837), (116, 144092), (124, 144131), (127, 144161), (133, 144224), (135, 144245), (136, 144254), (138, 144257), (143, 144290), (145, 144305), (164, 144440), (180, 144515), (187, 144572), (188, 144575),

Gene: SuperGrey_31 Start: 27204, Stop: 28496, Start Num: 10

Candidate Starts for SuperGrey_31:

(Start: 10 @27204 has 65 MA's), (27, 27324), (44, 27513), (46, 27516), (55, 27594), (66, 27675), (70, 27717), (79, 27795), (95, 27921), (96, 27927), (101, 27966), (108, 28026), (110, 28041), (115, 28083), (121, 28119), (122, 28122), (125, 28137), (128, 28173), (129, 28182), (152, 28296), (170, 28407),

Gene: TDanisky_30 Start: 26346, Stop: 27617, Start Num: 10

Candidate Starts for TDanisky_30:

(Start: 10 @26346 has 65 MA's), (27, 26463), (36, 26535), (44, 26652), (46, 26655), (55, 26733), (66, 26814), (70, 26856), (79, 26934), (95, 27060), (108, 27165), (110, 27180), (115, 27222), (121, 27258), (122, 27261), (128, 27312), (129, 27321), (152, 27435), (155, 27477), (160, 27486), (169, 27543), (170, 27546),

Gene: Tainan_250 Start: 142139, Stop: 143569, Start Num: 14

Candidate Starts for Tainan_250:

(Start: 14 @142139 has 170 MA's), (25, 142229), (26, 142232), (35, 142292), (43, 142415), (47, 142439), (58, 142523), (64, 142565), (68, 142607), (85, 142772), (86, 142775), (116, 143030), (124, 143069), (127, 143099), (133, 143162), (135, 143183), (136, 143192), (138, 143195), (143, 143228), (145, 143243), (164, 143378), (180, 143453), (187, 143510), (188, 143513),

Gene: Teardrop_249 Start: 142528, Stop: 143958, Start Num: 14

Candidate Starts for Teardrop_249:

(Start: 14 @142528 has 170 MA's), (25, 142618), (35, 142681), (43, 142804), (47, 142828), (58, 142912), (64, 142954), (68, 142996), (85, 143161), (86, 143164), (116, 143419), (124, 143458), (127, 143488), (133, 143551), (135, 143572), (136, 143581), (138, 143584), (143, 143617), (145, 143632), (164, 143767), (180, 143842), (187, 143899), (188, 143902),

Gene: ThetaBob_29 Start: 25694, Stop: 27004, Start Num: 10

Candidate Starts for ThetaBob_29:

(Start: 10 @25694 has 65 MA's), (27, 25811), (36, 25883), (44, 26000), (46, 26003), (55, 26081), (66, 26162), (70, 26213), (92, 26390), (95, 26432), (97, 26441), (115, 26597), (152, 26819), (155, 26861), (160, 26870), (167, 26912), (169, 26927), (170, 26930), (171, 26936), (182, 26984),

Gene: TinyTim_249 Start: 142495, Stop: 143925, Start Num: 14

Candidate Starts for TinyTim_249:

(Start: 14 @142495 has 170 MA's), (25, 142585), (35, 142648), (43, 142771), (47, 142795), (58, 142879), (64, 142921), (68, 142963), (85, 143128), (86, 143131), (116, 143386), (124, 143425), (127, 143455), (133, 143518), (135, 143539), (136, 143548), (138, 143551), (143, 143584), (145, 143599), (164, 143734), (180, 143809), (187, 143866), (188, 143869),

Gene: Tonenili_272 Start: 147835, Stop: 149253, Start Num: 14

Candidate Starts for Tonenili_272:

(Start: 14 @147835 has 170 MA's), (35, 147988), (39, 148060), (42, 148099), (43, 148111), (47, 148135), (58, 148246), (64, 148288), (101, 148585), (106, 148642), (115, 148702), (132, 148831), (134, 148855), (144, 148918), (145, 148927), (164, 149062), (179, 149131), (180, 149137), (188, 149197),

Gene: Tootsieroll_31 Start: 26372, Stop: 27574, Start Num: 16

Candidate Starts for Tootsieroll_31:

(Start: 16 @26372 has 15 MA's), (27, 26456), (41, 26606), (49, 26660), (70, 26801), (80, 26879), (95, 27005), (96, 27011), (101, 27050), (108, 27110), (110, 27125), (115, 27167), (121, 27203), (122, 27206), (128, 27257), (129, 27266), (155, 27431), (162, 27449), (170, 27500), (173, 27509),

Gene: Tortoise16_248 Start: 142508, Stop: 143938, Start Num: 14

Candidate Starts for Tortoise16_248:

(Start: 14 @142508 has 170 MA's), (25, 142598), (35, 142661), (43, 142784), (47, 142808), (58, 142892), (64, 142934), (68, 142976), (85, 143141), (86, 143144), (116, 143399), (124, 143438), (127, 143468), (133, 143531), (135, 143552), (136, 143561), (138, 143564), (143, 143597), (145, 143612), (164, 143747), (180, 143822), (187, 143879), (188, 143882),

Gene: Totinger_31 Start: 26230, Stop: 27501, Start Num: 10

Candidate Starts for Totinger_31:

(Start: 10 @26230 has 65 MA's), (27, 26347), (36, 26419), (44, 26536), (46, 26539), (55, 26617), (66, 26698), (70, 26740), (79, 26818), (95, 26944), (108, 27049), (110, 27064), (115, 27106), (121, 27142), (122, 27145), (128, 27196), (129, 27205), (152, 27319), (155, 27361), (160, 27370), (169, 27427), (170, 27430),

Gene: Trinitium_247 Start: 141249, Stop: 142679, Start Num: 14

Candidate Starts for Trinitium_247:

(Start: 14 @141249 has 170 MA's), (25, 141339), (35, 141402), (43, 141525), (47, 141549), (58, 141633), (64, 141675), (68, 141717), (85, 141882), (86, 141885), (116, 142140), (124, 142179), (127, 142209), (133, 142272), (135, 142293), (136, 142302), (138, 142305), (143, 142338), (145, 142353), (164, 142488), (180, 142563), (187, 142620), (188, 142623),

Gene: Turret_241 Start: 140382, Stop: 141812, Start Num: 14

Candidate Starts for Turret_241:

(Start: 14 @140382 has 170 MA's), (25, 140472), (35, 140535), (43, 140658), (47, 140682), (58, 140766), (64, 140808), (68, 140850), (85, 141015), (86, 141018), (116, 141273), (124, 141312), (127, 141342), (133, 141405), (135, 141426), (136, 141435), (138, 141438), (143, 141471), (145, 141486), (164, 141621), (180, 141696), (187, 141753), (188, 141756),

Gene: TyDawg_35 Start: 29799, Stop: 31166, Start Num: 20

Candidate Starts for TyDawg_35:

(Start: 20 @29799 has 14 MA's), (24, 29856), (28, 29883), (35, 29922), (44, 30060), (50, 30084), (57, 30162), (58, 30168), (59, 30171), (68, 30246), (84, 30378), (90, 30405), (91, 30414), (99, 30468), (101, 30495), (104, 30525), (111, 30579), (119, 30651), (142, 30837), (162, 30957), (164, 30978), (167, 30996), (168, 31011), (178, 31041), (183, 31071), (188, 31107), (189, 31110), (193, 31146),

Gene: Tyke_247 Start: 144631, Stop: 146061, Start Num: 14

Candidate Starts for Tyke_247:

(Start: 14 @144631 has 170 MA's), (25, 144721), (35, 144784), (43, 144907), (47, 144931), (58, 145015), (64, 145057), (68, 145099), (85, 145264), (86, 145267), (116, 145522), (124, 145561), (127, 145591), (133, 145654), (135, 145675), (136, 145684), (138, 145687), (143, 145720), (145, 145735), (164, 145870), (180, 145945), (187, 146002), (188, 146005),

Gene: VRedHorse_30 Start: 26539, Stop: 27690, Start Num: 16

Candidate Starts for VRedHorse_30:

(3, 26266), (5, 26287), (Start: 16 @26539 has 15 MA's), (27, 26623), (41, 26773), (49, 26827), (70, 26968), (80, 27046), (95, 27172), (96, 27178), (101, 27217), (108, 27277), (110, 27292), (115, 27334), (121, 27370), (122, 27373), (128, 27424), (129, 27433), (152, 27547), (170, 27658), (174, 27676), (176, 27679),

Gene: ValleyTerrace_251 Start: 141959, Stop: 143389, Start Num: 14

Candidate Starts for ValleyTerrace_251:

(Start: 14 @141959 has 170 MA's), (25, 142049), (35, 142112), (43, 142235), (47, 142259), (58, 142343), (64, 142385), (68, 142427), (85, 142592), (86, 142595), (116, 142850), (124, 142889), (127, 142919), (133, 142982), (135, 143003), (136, 143012), (138, 143015), (143, 143048), (145, 143063), (164, 143198), (180, 143273), (187, 143330), (188, 143333),

Gene: Velveteen_26 Start: 22498, Stop: 23733, Start Num: 10

Candidate Starts for Velveteen_26:

(Start: 10 @22498 has 65 MA's), (27, 22618), (36, 22690), (44, 22807), (46, 22810), (55, 22888), (66, 22969), (70, 23011), (79, 23089), (95, 23215), (96, 23221), (101, 23260), (108, 23320), (110, 23335), (115, 23377), (121, 23413), (122, 23416), (128, 23467), (129, 23476), (152, 23590), (170, 23701), (176, 23722),

Gene: Wally_248 Start: 141943, Stop: 143373, Start Num: 14

Candidate Starts for Wally_248:

(Start: 14 @141943 has 170 MA's), (25, 142033), (35, 142096), (43, 142219), (47, 142243), (58, 142327), (64, 142369), (68, 142411), (85, 142576), (86, 142579), (116, 142834), (124, 142873), (127, 142903), (133, 142966), (135, 142987), (136, 142996), (138, 142999), (143, 143032), (145, 143047), (164, 143182), (180, 143257), (187, 143314), (188, 143317),

Gene: Whouxphf_31 Start: 26736, Stop: 28010, Start Num: 10

Candidate Starts for Whouxphf_31:

(Start: 10 @26736 has 65 MA's), (27, 26856), (36, 26928), (44, 27045), (46, 27048), (55, 27126), (66, 27207), (70, 27249), (79, 27327), (95, 27453), (96, 27459), (101, 27498), (110, 27573), (115, 27615), (122, 27654), (125, 27669), (128, 27705), (129, 27714), (152, 27828), (155, 27870), (160, 27879), (169, 27936), (170, 27939),

Gene: WillSterrel_32 Start: 27871, Stop: 29145, Start Num: 10

Candidate Starts for WillSterrel_32:

(Start: 10 @27871 has 65 MA's), (27, 27991), (44, 28180), (46, 28183), (55, 28261), (66, 28342), (70, 28384), (79, 28462), (95, 28588), (96, 28594), (108, 28693), (110, 28708), (115, 28750), (121, 28786), (125, 28804), (128, 28840), (129, 28849), (152, 28963), (155, 29005), (160, 29014), (169, 29071), (170, 29074),

Gene: Willis_251 Start: 142882, Stop: 144312, Start Num: 14

Candidate Starts for Willis_251:

(Start: 14 @142882 has 170 MA's), (25, 142972), (35, 143035), (43, 143158), (47, 143182), (58, 143266), (64, 143308), (68, 143350), (85, 143515), (86, 143518), (116, 143773), (124, 143812), (127, 143842), (133, 143905), (135, 143926), (136, 143935), (138, 143938), (143, 143971), (145, 143986), (164, 144121), (180, 144196), (187, 144253), (188, 144256),

Gene: Yassified_246 Start: 142078, Stop: 143508, Start Num: 14

Candidate Starts for Yassified_246:

(8, 142036), (Start: 14 @142078 has 170 MA's), (25, 142168), (35, 142231), (43, 142354), (47, 142378), (58, 142462), (64, 142504), (68, 142546), (85, 142711), (86, 142714), (116, 142969), (124, 143008), (127, 143038), (133, 143101), (135, 143122), (136, 143131), (138, 143134), (143, 143167), (145, 143182), (164, 143317), (180, 143392), (188, 143452),

Gene: YemiJoy2021_251 Start: 143613, Stop: 145043, Start Num: 14

Candidate Starts for YemiJoy2021_251:

(Start: 14 @143613 has 170 MA's), (25, 143703), (35, 143766), (43, 143889), (47, 143913), (58, 143997), (64, 144039), (68, 144081), (85, 144246), (86, 144249), (116, 144504), (124, 144543), (127, 144573), (133, 144636), (135, 144657), (136, 144666), (138, 144669), (143, 144702), (145, 144717), (164, 144852), (180, 144927), (187, 144984), (188, 144987),

Gene: Yoshi_37 Start: 25847, Stop: 27094, Start Num: 13

Candidate Starts for Yoshi_37:

(7, 25826), (Start: 13 @25847 has 2 MA's), (27, 25928), (40, 26060), (41, 26063), (44, 26108), (50, 26132), (62, 26222), (70, 26303), (79, 26384), (87, 26438), (92, 26468), (95, 26510), (96, 26516), (97, 26519), (101, 26555), (110, 26630), (115, 26672), (121, 26708), (122, 26711), (128, 26762), (129, 26771), (154, 26933), (181, 27047), (184, 27071), (185, 27080),

Gene: YoungMoneyMata_250 Start: 143074, Stop: 144504, Start Num: 14

Candidate Starts for YoungMoneyMata_250:

(Start: 14 @143074 has 170 MA's), (25, 143164), (35, 143227), (43, 143350), (47, 143374), (58, 143458), (64, 143500), (68, 143542), (85, 143707), (86, 143710), (116, 143965), (124, 144004), (127, 144034), (133, 144097), (135, 144118), (136, 144127), (138, 144130), (143, 144163), (145, 144178), (164, 144313), (180, 144388), (187, 144445), (188, 144448),

Gene: Yucca_251 Start: 144054, Stop: 145484, Start Num: 14

Candidate Starts for Yucca_251:

(Start: 14 @144054 has 170 MA's), (25, 144144), (35, 144207), (43, 144330), (47, 144354), (58, 144438), (64, 144480), (68, 144522), (85, 144687), (86, 144690), (116, 144945), (124, 144984), (127, 145014), (133, 145077), (135, 145098), (136, 145107), (138, 145110), (143, 145143), (145, 145158), (164, 145293), (180, 145368), (187, 145425), (188, 145428),

Gene: Zalkecks_249 Start: 142711, Stop: 144141, Start Num: 14

Candidate Starts for Zalkecks_249:

(Start: 14 @142711 has 170 MA's), (25, 142801), (35, 142864), (43, 142987), (47, 143011), (58, 143095), (64, 143137), (68, 143179), (85, 143344), (86, 143347), (116, 143602), (124, 143641), (127, 143671), (133, 143734), (135, 143755), (136, 143764), (138, 143767), (143, 143800), (145, 143815), (164, 143950), (180, 144025), (187, 144082), (188, 144085),

Gene: Zeenon_251 Start: 143245, Stop: 144675, Start Num: 14

Candidate Starts for Zeenon_251:

(Start: 14 @143245 has 170 MA's), (25, 143335), (35, 143398), (43, 143521), (47, 143545), (58, 143629), (64, 143671), (68, 143713), (85, 143878), (86, 143881), (116, 144136), (124, 144175), (127, 144205), (133, 144268), (135, 144289), (136, 144298), (138, 144301), (143, 144334), (145, 144349), (164, 144484), (180, 144559), (187, 144616), (188, 144619),

Gene: ZygoTaiga_247 Start: 144351, Stop: 145781, Start Num: 14

Candidate Starts for ZygoTaiga_247:

(Start: 14 @144351 has 170 MA's), (25, 144441), (35, 144504), (43, 144627), (47, 144651), (58, 144735), (64, 144777), (68, 144819), (85, 144984), (86, 144987), (116, 145242), (124, 145281), (127, 145311), (133, 145374), (135, 145395), (136, 145404), (138, 145407), (143, 145440), (145, 145455), (164, 145590), (180, 145665), (187, 145722), (188, 145725),