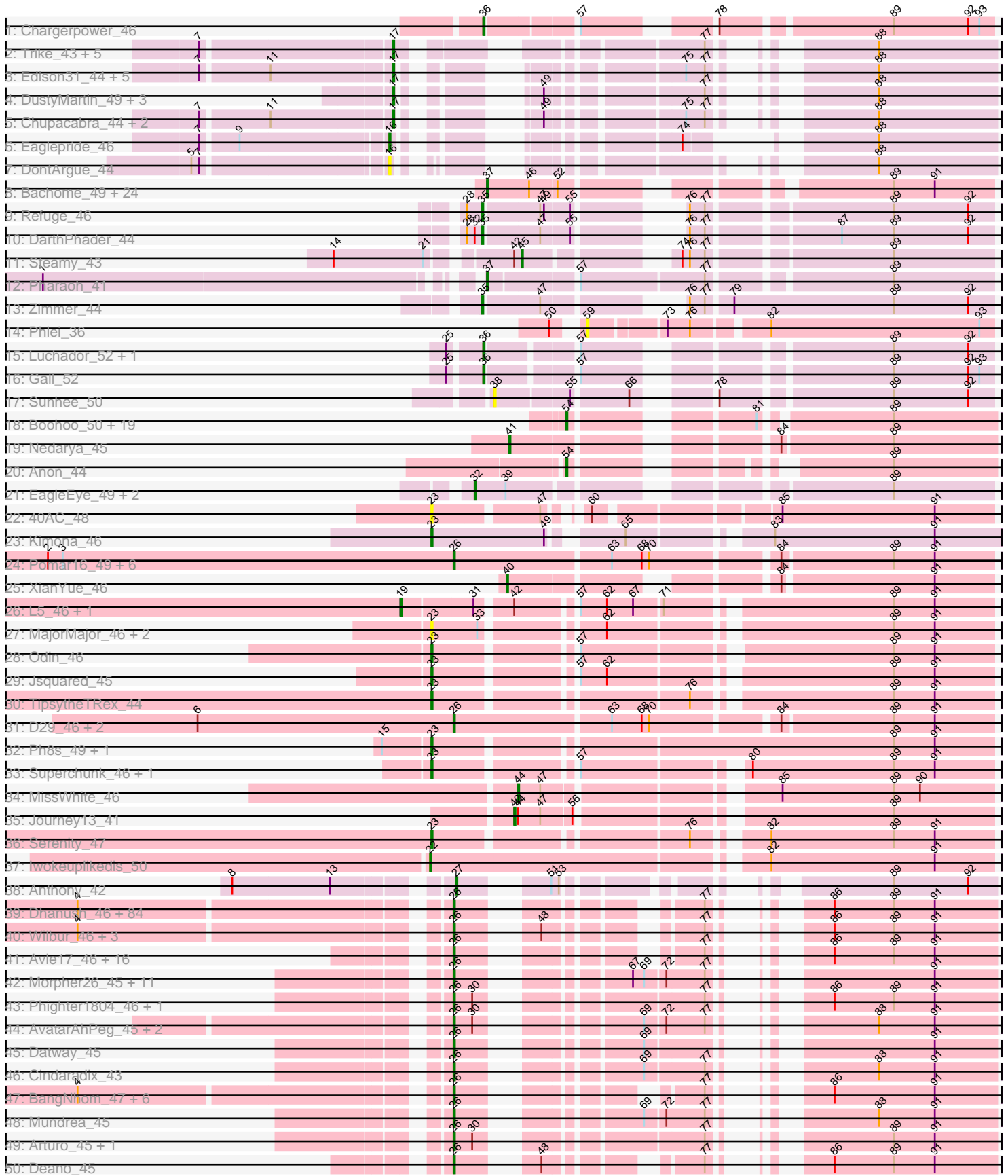
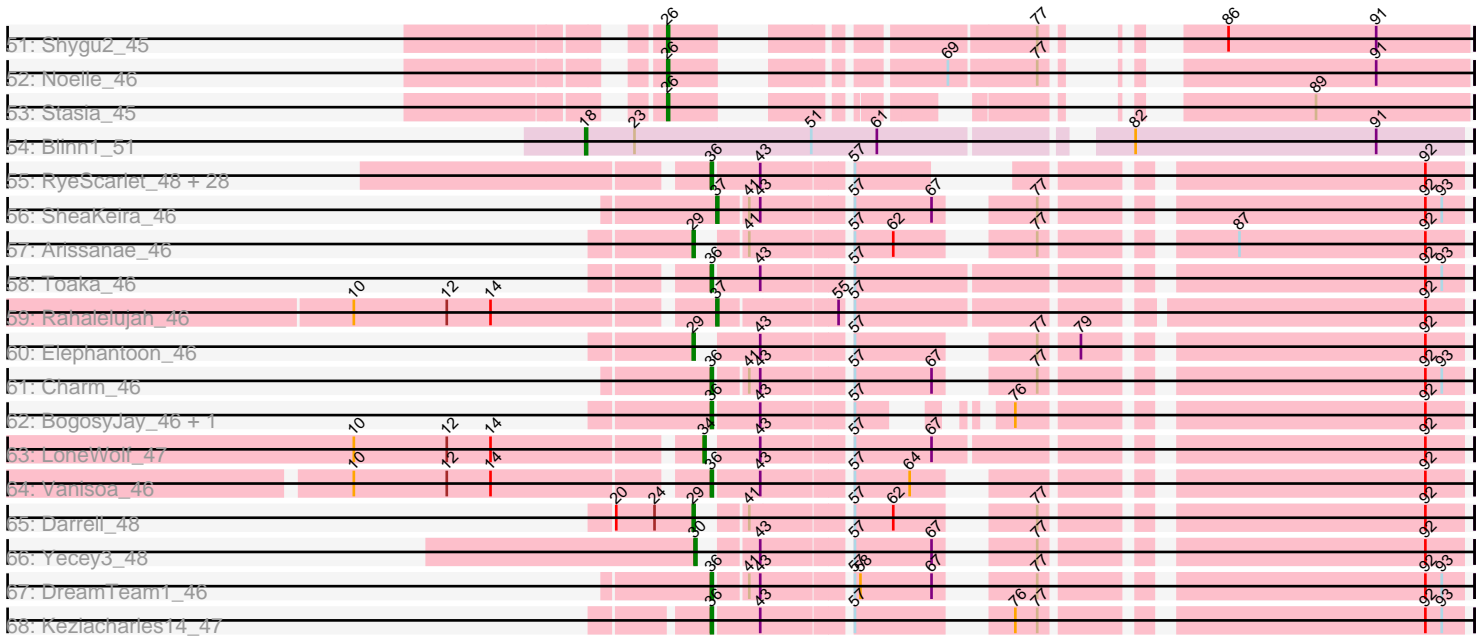


Pham 196238



Pham 196238



Note: Tracks are now grouped by subcluster and scaled. Switching in subcluster is indicated by changes in track color. Track scale is now set by default to display the region 30 bp upstream of start 1 to 30 bp downstream of the last possible start. If this default region is judged to be packed too tightly with annotated starts, the track will be further scaled to only show that region of the ORF with annotated starts. This action will be indicated by adding "Zoomed" to the title. For starts, yellow indicates the location of called starts comprised solely of Glimmer/GeneMark auto-annotations, green indicates the location of called starts with at least 1 manual gene annotation.

Pham 196238 Report

This analysis was run 12/09/24 on database version 580.

Pham number 196238 has 295 members, 25 are drafts.

Phages represented in each track:

- Track 1 : Chargerpower_46
- Track 2 : Trike_43, Drake94_43, Poompha_44, Severus_43, PeaceMeal1_43, KittenMittens_42
- Track 3 : Edison31_44, Rebeuca_45, Topanga_43, WalterMcMickey_43, Kristoff_45, Twister_43
- Track 4 : DustyMartin_49, RhynO_46, Shapes_49, Rowdy_49
- Track 5 : Chupacabra_44, OKCentral2016_44, Goose_45
- Track 6 : Eaglepride_46
- Track 7 : DontArgue_44
- Track 8 : Bachome_49, Jabith_48, Sham4_47, Fibonacci_47, Petersenfast_46, Lucivia_48, Flaverint_48, Orange_47, Bowtie_48, Hutc2_47, Insomnia_48, Ebony_47, Mulciber_47, Snape_47, Mabel_47, MaCh_48, Timothy_47, TinyTimmy_47, Gilberta_48, Munch_48, Aneem_48, Salz_46, Et2Brutus_46, Bud_47, Joselito_48
- Track 9 : Refuge_46
- Track 10 : DarthPhader_44
- Track 11 : Steamy_43
- Track 12 : Pharaoh_41
- Track 13 : Zimmer_44
- Track 14 : Phlei_36
- Track 15 : Luchador_52, Jeeves_52
- Track 16 : Gail_52
- Track 17 : Sunhee_50
- Track 18 : Boohoo_50, DekHockey33_50, Switzerland_49, ShayRa_51, Anaysia_50, LastResort_49, Rosalind_48, Epsocamisio_48, Oofda_50, Nebulosus_49, KatherineG_51, Waits_49, Remus_49, Looper_50, ReMo_49, MinecraftSteve_50, Battleship_50, Soups_50, JSwag_48, Strosahl_49
- Track 19 : Nedarya_45
- Track 20 : Anon_44
- Track 21 : EagleEye_49, PainterBoy_48, Lucyedi_48
- Track 22 : 40AC_48
- Track 23 : Kimona_46
- Track 24 : Pomar16_49, Travvers_49, Duplo_49, DBQu4n_49, Tomathan_49, Kerberos_49, StarStuff_49
- Track 25 : XianYue_46
- Track 26 : L5_46, Koduck_47
- Track 27 : MajorMajor_46, Bradman_46, Quokka_45

- Track 28 : Odin_46
- Track 29 : Jsquared_45
- Track 30 : TipsytheTRex_44
- Track 31 : D29_46, Naji_49, D32_49
- Track 32 : Ph8s_49, Adzzy_49
- Track 33 : Superchunk_46, Caraxes_47
- Track 34 : MissWhite_46
- Track 35 : Journey13_41
- Track 36 : Serenity_47
- Track 37 : Iwokeuplikedis_50
- Track 38 : Anthony_42
- Track 39 : Dhanush_46, Bombshell_46, Nebs_47, Relief_45, Eagle_46, HamSlice_45, Chaph_46, NorthStar_45, CentreCat_46, Melvin_48, Abdiel_46, Kamy_46, Pipcraft_44, TygerBlood_46, Broseidon_46, Lemur_46, Millski_45, Caelakin_46, LittleB_46, Annyong_46, Morrow_47, TroyPia_47, Alberto7_47, Medusa_46, Jaykayelowell_44, MeeZee_46, Nyxis_46, Connomayer_46, Phelipe_47, KFPoly_45, Blackmoor_46, BubbleTrouble_45, Shaka_46, LeoAvram_46, Scamp_46, Clarenza_45, Wizard007_46, Skipitt_45, Lunsford_47, Sabertooth_46, Iceman_46, Eurydice_47, ICleared_46, Druantia_46, Flux_46, JetBlade_46, Burger_44, Peaches_46, Happiness_45, Eros_46, LittleGuy_46, Eapen_46, Sparxx_47, Pumbaa_46, Albee_46, Bartimeaus_46, Citius_46, Maxo_47, Baby16_46, Cintron_45, LappelDuVide_46, Ruin_46, Tinybot_45, Kingmustik0402_46, Palestino_45, Phontbonne_46, Eris_45, TinaFeyge_46, Polymorphads_47, Iracema64_47, OKaNui_46, Commander_46, TiroTheta9_46, Lorenzo_46, Koreni_45, Florean_46, Thanksgivukkah_45, Ulysses_45, Roosevelt_45, Ohfah_47, PeterPeter_46, YoSam321_46, Taquarus_46, Spino_45, Holli_45
- Track 40 : Wilbur_46, Rosa24_45, Romney_46, LochMonster_47
- Track 41 : Avle17_46, NotAPhaseMom_46, JoongJeon_45, BellusTerra_47, Bruiser_45, Wander_46, Mazhar510_46, Camperdownii_44, Houdini22_46, Phacado_46, Gadost_46, Maverick_46, Funston_45, Huxley_46, Kyee_46, Cocoaberry_46, Nemo27_46
- Track 42 : Morpher26_45, Cici_45, Xena_44, Badger_44, Bumblebee11_44, AbbysRanger_45, Backyardigan_44, Achebe_44, PetiteSangsue_45, Katalie136_45, Perplexer_45, Wile_45
- Track 43 : Phighter1804_46, DirtyDunning_45
- Track 44 : AvatarAhPeg_45, Stink_46, Miramae_45
- Track 45 : Datway_45
- Track 46 : Cindaradix_43
- Track 47 : BangNhom_47, Cerulean_47, SheldonCooper_48, Obama12_47, ChampagnePapi_48, Kremtemulon_46, LHTSCC_48
- Track 48 : Mundrea_45
- Track 49 : Arturo_45, Kratak_46
- Track 50 : Deano_45
- Track 51 : Shygu2_45
- Track 52 : Noelle_46
- Track 53 : Stasia_45
- Track 54 : Blinn1_51
- Track 55 : RyeScarlet_48, Eidsmoe_47, EmyBug_46, Halex_46, Lilleskat_45, Aliter_47, Myxus_47, Priya_47, Beemo_47, ExplosioNervosa_47, PackMan_46, Ugenie5_44, Phonnegut_47, Onglai_45, HortumSL17_47, Scherzo_47, Spouty_47, EdogawaKiddo_45, Conquerage_47, Qobbit_47, Fayely_47, Sachima_44, Jiawan_45, Hanray_45, Phaeder_47, Tubs_47, Pioneer_47, Catalina_48, Alma_47

- Track 56 : SheaKeira_46
- Track 57 : Arissanae_46
- Track 58 : Toaka_46
- Track 59 : Rahalelujah_46
- Track 60 : Elephantoon_46
- Track 61 : Charm_46
- Track 62 : BogosyJay_46, Maminiaina_46
- Track 63 : LoneWolf_47
- Track 64 : Vanisoa_46
- Track 65 : Darrell_48
- Track 66 : Yecey3_48
- Track 67 : DreamTeam1_46
- Track 68 : Keziacharles14_47

Summary of Final Annotations (See graph section above for start numbers):

The start number called the most often in the published annotations is 26, it was called in 146 of the 270 non-draft genes in the pham.

Genes that call this "Most Annotated" start:

- AbbysRanger_45, Abdiel_46, Achebe_44, Albee_46, Alberto7_47, Annyong_46, Arturo_45, AvatarAhPeg_45, Avle17_46, Baby16_46, Backyardigan_44, Badger_44, BangNhom_47, Bartimeaus_46, BellusTerra_47, Blackmoor_46, Bombshell_46, Broseidon_46, Bruiser_45, BubbleTrouble_45, Bumblebee11_44, Burger_44, Caelakin_46, Camperdownii_44, CentreCat_46, Cerulean_47, ChampagnePapi_48, Chaph_46, Cici_45, Cindaradix_43, Cintron_45, Citius_46, Clarenza_45, Cocoaberry_46, Commander_46, Connomayer_46, D29_46, D32_49, DBQu4n_49, Datway_45, Deano_45, Dhanush_46, DirtyDunning_45, Druantia_46, Duplo_49, Eagle_46, Eapen_46, Eris_45, Eros_46, Eurydice_47, Florean_46, Flux_46, Funston_45, Gadost_46, HamSlice_45, Happiness_45, Holli_45, Houdini22_46, Huxley_46, ICleared_46, Iceman_46, Iracema64_47, Jaykayelowell_44, JetBlade_46, JoongJeon_45, KFPoly_45, Kampy_46, Katalie136_45, Kerberos_49, Kingmustik0402_46, Koreni_45, Kratark_46, Kremtemulon_46, Kye_46, LHTSCC_48, LappelDuVide_46, Lemur_46, LeoAvram_46, LittleB_46, LittleGuy_46, LochMonster_47, Lorenzo_46, Lunsford_47, Maverick_46, Maxo_47, Mazhar510_46, Medusa_46, MeeZee_46, Melvin_48, Millski_45, Miramae_45, Morpher26_45, Morrow_47, Mundrea_45, Naji_49, Nebs_47, Nemo27_46, Noelle_46, NorthStar_45, NotAPhaseMom_46, Nyxis_46, OKaNui_46, Obama12_47, Ohfah_47, Palestino_45, Peaches_46, Perplexer_45, PeterPeter_46, PetiteSangsue_45, Phacado_46, Phelipe_47, Phighter1804_46, Phontbonne_46, Pipcraft_44, Polymorphads_47, Pomar16_49, Pumbaa_46, Relief_45, Romney_46, Roosevelt_45, Rosa24_45, Ruin_46, Sabertooth_46, Scamp_46, Shaka_46, SheldonCooper_48, Shygu2_45, Skipitt_45, Sparxx_47, Spino_45, StarStuff_49, Stasia_45, Stink_46, Taquarus_46, Thanksgivukkah_45, TinaFeyge_46, Tinybot_45, TiroTheta9_46, Tomathan_49, Travvers_49, TroyPia_47, TygerBlood_46, Ulysses_45, Wander_46, Wilbur_46, Wile_45, Wizard007_46, Xena_44, YoSam321_46,

Genes that have the "Most Annotated" start but do not call it:

-

Genes that do not have the "Most Annotated" start:

- 40AC_48, Adzzy_49, Aliter_47, Alma_47, Anaysia_50, Aneem_48, Anon_44, Anthony_42, Arissanae_46, Bachome_49, Battleship_50, Beemo_47, Blinn1_51, BogosyJay_46, Boohoo_50, Bowtie_48, Bradman_46, Bud_47, Caraxes_47, Catalina_48, Chargerpower_46, Charm_46, Chupacabra_44, Conquerage_47, Darrell_48, DARTHPhader_44, DekHockey33_50, DontArgue_44, Drake94_43, DreamTeam1_46, DustyMartin_49, EagleEye_49, Eaglepride_46, Ebony_47, Edison31_44, EdogawaKiddo_45, Eidsmoe_47, Elephanto_46, EmyBug_46, Epsocamisio_48, Et2Brutus_46, ExplosioNervosa_47, Fayely_47, Fibonacci_47, Flaverint_48, Gail_52, Gilberta_48, Goose_45, Hanray_45, Halex_46, HortumSL17_47, Hutc2_47, Insomnia_48, Iwokeuplikedis_50, JSwag_48, Jabith_48, Jeeves_52, Jiawan_45, Joselito_48, Journey13_41, Jsquared_45, KatherineG_51, Keziacharles14_47, Kimona_46, KittenMittens_42, Koduck_47, Kristoff_45, L5_46, LastResort_49, Lilleskat_45, LoneWolf_47, Looper_50, Luchador_52, Lucivia_48, Lucyedi_48, MaCh_48, Mabel_47, MajorMajor_46, Maminiana_46, MinecraftSteve_50, MissWhite_46, Mulciber_47, Munch_48, Myxus_47, Nebulosus_49, Nedarya_45, OKCentral2016_44, Odin_46, Onglai_45, Oofda_50, Orange_47, PackMan_46, PainterBoy_48, PeaceMeal1_43, Petersenfast_46, Ph8s_49, Phaeder_47, Pharaoh_41, Phlei_36, Phonnegut_47, Pioneer_47, Poompha_44, Priya_47, Qobbit_47, Quokka_45, Rahalelujah_46, ReMo_49, Rebeuca_45, Refuge_46, Remus_49, RhynO_46, Rosalind_48, Rowdy_49, RyeScarlet_48, Sachima_44, Salz_46, Scherzo_47, Serenity_47, Severus_43, Sham4_47, Shapes_49, ShayRa_51, SheaKeira_46, Snape_47, Soups_50, Spouty_47, Steamy_43, Strosahl_49, Sunhee_50, Superchunk_46, Switzerland_49, Timothy_47, TinyTimmy_47, TopsytheTRex_44, Toaka_46, Topanga_43, Trike_43, Tubs_47, Twister_43, Ugenie5_44, Vanisoa_46, Waits_49, WalterMcMickey_43, XianYue_46, Yecey3_48, Zimmer_44,

Summary by start number:

Start 16:

- Found in 2 of 295 (0.7%) of genes in pham
- Manual Annotations of this start: 1 of 270
- Called 100.0% of time when present
- Phage (with cluster) where this start called: DontArgue_44 (A10), Eaglepride_46 (A10),

Start 17:

- Found in 19 of 295 (6.4%) of genes in pham
- Manual Annotations of this start: 16 of 270
- Called 100.0% of time when present
- Phage (with cluster) where this start called: Chupacabra_44 (A10), Drake94_43 (A10), DustyMartin_49 (A10), Edison31_44 (A10), Goose_45 (A10), KittenMittens_42 (A10), Kristoff_45 (A10), OKCentral2016_44 (A10), PeaceMeal1_43 (A10), Poompha_44 (A10), Rebeuca_45 (A10), RhynO_46 (A10), Rowdy_49 (A10), Severus_43 (A10), Shapes_49 (A10), Topanga_43 (A10), Trike_43 (A10), Twister_43 (A10), WalterMcMickey_43 (A10),

Start 18:

- Found in 1 of 295 (0.3%) of genes in pham
- Manual Annotations of this start: 1 of 270
- Called 100.0% of time when present
- Phage (with cluster) where this start called: Blinn1_51 (A6),

Start 19:

- Found in 2 of 295 (0.7%) of genes in pham
- Manual Annotations of this start: 1 of 270
- Called 100.0% of time when present
- Phage (with cluster) where this start called: Koduck_47 (A2), L5_46 (A2),

Start 22:

- Found in 1 of 295 (0.3%) of genes in pham
- Manual Annotations of this start: 1 of 270
- Called 100.0% of time when present
- Phage (with cluster) where this start called: Iwokeuplikedis_50 (A2),

Start 23:

- Found in 14 of 295 (4.7%) of genes in pham
- Manual Annotations of this start: 8 of 270
- Called 92.9% of time when present
- Phage (with cluster) where this start called: 40AC_48 (A17), Adzzy_49 (A2), Bradman_46 (A2), Caraxes_47 (A2), Jsquared_45 (A2), Kimona_46 (A19), MajorMajor_46 (A2), Odin_46 (A2), Ph8s_49 (A2), Quokka_45 (A2), Serenity_47 (A2), Superchunk_46 (A2), TipsytheTRex_44 (A2),

Start 26:

- Found in 149 of 295 (50.5%) of genes in pham
- Manual Annotations of this start: 146 of 270
- Called 100.0% of time when present
- Phage (with cluster) where this start called: AbbysRanger_45 (A4), Abdiel_46 (A4), Achebe_44 (A4), Albee_46 (A4), Alberto7_47 (A4), Annyong_46 (A4), Arturo_45 (A4), AvatarAhPeg_45 (A4), Avle17_46 (A4), Baby16_46 (A4), Backyardigan_44 (A4), Badger_44 (A4), BangNhom_47 (A4), Bartimeaus_46 (A4), BellusTerra_47 (A4), Blackmoor_46 (A4), Bombshell_46 (A4), Broseidon_46 (A4), Bruiser_45 (A4), BubbleTrouble_45 (A4), Bumblebee11_44 (A4), Burger_44 (A4), Caelakin_46 (A4), Camperdownii_44 (A4), CentreCat_46 (A4), Cerulean_47 (A4), ChampagnePapi_48 (A4), Chaph_46 (A4), Cici_45 (A4), Cindaradix_43 (A4), Cintron_45 (A4), Citius_46 (A4), Clarenza_45 (A4), Cocoaberry_46 (A4), Commander_46 (A4), Connomayer_46 (A4), D29_46 (A2), D32_49 (A2), DBQu4n_49 (A2), Datway_45 (A4), Deano_45 (A4), Dhanush_46 (A4), DirtyDunning_45 (A4), Druantia_46 (A4), Duplo_49 (A2), Eagle_46 (A4), Eapen_46 (A4), Eris_45 (A4), Eros_46 (A4), Eurydice_47 (A4), Florean_46 (A4), Flux_46 (A4), Funston_45 (A4), Gadost_46 (A4), HamSlice_45 (A4), Happiness_45 (A4), Holli_45 (A4), Houdini22_46 (A4), Huxley_46 (A4), ICleared_46 (A4), Iceman_46 (A4), Iracema64_47 (A4), Jaykayelowell_44 (A4), JetBlade_46 (A4), JoongJeon_45 (A4), KFPoly_45 (A4), Kampy_46 (A4), Katalie136_45 (A4), Kerberos_49 (A2), Kingmustik0402_46 (A4), Koreni_45 (A4), Kratark_46 (A4), Kremtemulon_46 (A4), Kyee_46 (A4), LHTSCC_48 (A4), LappelDuVide_46 (A4), Lemur_46 (A4), LeoAvram_46 (A4), LittleB_46 (A4), LittleGuy_46 (A4), LochMonster_47 (A4), Lorenzo_46 (A4), Lunsford_47 (A4), Maverick_46 (A4), Maxo_47 (A4), Mazhar510_46 (A4), Medusa_46 (A4), MeeZee_46 (A4), Melvin_48 (A4), Millski_45 (A4), Miramae_45 (A4), Morpher26_45 (A4), Morrow_47 (A4), Mundrea_45 (A4), Naji_49 (A2), Nebs_47 (A4), Nemo27_46 (A4), Noelle_46 (A4), NorthStar_45 (A4), NotAPhaseMom_46 (A4), Nyxis_46 (A4), OKaNui_46 (A4), Obama12_47 (A4), Ohfah_47 (A4), Palestino_45 (A4), Peaches_46 (A4), Perplexer_45 (A4), PeterPeter_46 (A4), PetiteSangsue_45 (A4), Phacado_46 (A4), Phelipe_47 (A4), Phighter1804_46 (A4), Phontbonne_46 (A4), Pipcraft_44 (A4),

Polymorphads_47 (A4), Pomar16_49 (A2), Pumbaa_46 (A4), Relief_45 (A4), Romney_46 (A4), Roosevelt_45 (A4), Rosa24_45 (A4), Ruin_46 (A4), Sabertooth_46 (A4), Scamp_46 (A4), Shaka_46 (A4), SheldonCooper_48 (A4), Shygu2_45 (A4), Skipitt_45 (A4), Sparxx_47 (A4), Spino_45 (A4), StarStuff_49 (A2), Stasia_45 (A4), Stink_46 (A4), Taquarus_46 (A4), Thanksgivukkah_45 (A4), TinaFeyge_46 (A4), Tinybot_45 (A4), TiroTheta9_46 (A4), Tomathan_49 (A2), Travvers_49 (A2), TroyPia_47 (A4), TygerBlood_46 (A4), Ulysses_45 (A4), Wander_46 (A4), Wilbur_46 (A4), Wile_45 (A4), Wizard007_46 (A4), Xena_44 (A4), YoSam321_46 (A4),

Start 27:

- Found in 1 of 295 (0.3%) of genes in pham
- Manual Annotations of this start: 1 of 270
- Called 100.0% of time when present
- Phage (with cluster) where this start called: Anthony_42 (A20),

Start 29:

- Found in 3 of 295 (1.0%) of genes in pham
- Manual Annotations of this start: 3 of 270
- Called 100.0% of time when present
- Phage (with cluster) where this start called: Arissanee_46 (A9), Darrell_48 (A9), Elephantoon_46 (A9),

Start 30:

- Found in 8 of 295 (2.7%) of genes in pham
- Manual Annotations of this start: 1 of 270
- Called 12.5% of time when present
- Phage (with cluster) where this start called: Yecey3_48 (A9),

Start 32:

- Found in 4 of 295 (1.4%) of genes in pham
- Manual Annotations of this start: 3 of 270
- Called 75.0% of time when present
- Phage (with cluster) where this start called: EagleEye_49 (A16), Lucyedi_48 (A16), PainterBoy_48 (A16),

Start 34:

- Found in 1 of 295 (0.3%) of genes in pham
- Manual Annotations of this start: 1 of 270
- Called 100.0% of time when present
- Phage (with cluster) where this start called: LoneWolf_47 (A9),

Start 35:

- Found in 3 of 295 (1.0%) of genes in pham
- Manual Annotations of this start: 3 of 270
- Called 100.0% of time when present
- Phage (with cluster) where this start called: DARTHPhader_44 (A12), Refuge_46 (A12), Zimmer_44 (A12),

Start 36:

- Found in 40 of 295 (13.6%) of genes in pham
- Manual Annotations of this start: 32 of 270
- Called 100.0% of time when present

- Phage (with cluster) where this start called: Aliter_47 (A9), Alma_47 (A9), Beemo_47 (A9), BogosyJay_46 (A9), Catalina_48 (A9), Chargerpower_46 (A), Charm_46 (A9), Conquerage_47 (A9), DreamTeam1_46 (A9), EdogawaKiddo_45 (A9), Eidsmoe_47 (A9), EmyBug_46 (A9), ExplosioNervosa_47 (A9), Fayely_47 (A9), Gail_52 (A14), Hanray_45 (A9), Halex_46 (A9), HortumSL17_47 (A9), Jeeves_52 (A14), Jiawan_45 (A9), Keziacharles14_47 (A9), Lilleskat_45 (A9), Luchador_52 (A14), Maminiaina_46 (A9), Myxus_47 (A9), Onglai_45 (A9), PackMan_46 (A9), Phaeder_47 (A9), Phonnegut_47 (A9), Pioneer_47 (A9), Priya_47 (A9), Qobbit_47 (A9), RyeScarlet_48 (A9), Sachima_44 (A9), Scherzo_47 (A9), Spouty_47 (A9), Toaka_46 (A9), Tubs_47 (A9), Ugenie5_44 (A9), Vanisoa_46 (A9),

Start 37:

- Found in 28 of 295 (9.5%) of genes in pham
- Manual Annotations of this start: 27 of 270
- Called 100.0% of time when present
- Phage (with cluster) where this start called: Aneem_48 (A11), Bachome_49 (A11), Bowtie_48 (A11), Bud_47 (A11), Ebony_47 (A11), Et2Brutus_46 (A11), Fibonacci_47 (A11), Flaverint_48 (A11), Gilberta_48 (A11), Hutc2_47 (A11), Insomnia_48 (A11), Jabith_48 (A11), Joselito_48 (A11), Lucivia_48 (A11), MaCh_48 (A11), Mabel_47 (A11), Mulciber_47 (A11), Munch_48 (A11), Orange_47 (A11), Petersenfast_46 (A11), Pharaoh_41 (A12), Rahalelujah_46 (A9), Salz_46 (A11), Sham4_47 (A11), SheaKeira_46 (A9), Snape_47 (A11), Timothy_47 (A11), TinyTimmy_47 (A11),

Start 38:

- Found in 1 of 295 (0.3%) of genes in pham
- No Manual Annotations of this start.
- Called 100.0% of time when present
- Phage (with cluster) where this start called: Sunhee_50 (A14),

Start 40:

- Found in 1 of 295 (0.3%) of genes in pham
- Manual Annotations of this start: 1 of 270
- Called 100.0% of time when present
- Phage (with cluster) where this start called: XianYue_46 (A2),

Start 41:

- Found in 6 of 295 (2.0%) of genes in pham
- Manual Annotations of this start: 1 of 270
- Called 16.7% of time when present
- Phage (with cluster) where this start called: Nedarya_45 (A15),

Start 42:

- Found in 4 of 295 (1.4%) of genes in pham
- Manual Annotations of this start: 1 of 270
- Called 25.0% of time when present
- Phage (with cluster) where this start called: Journey13_41 (A2),

Start 44:

- Found in 2 of 295 (0.7%) of genes in pham
- Manual Annotations of this start: 1 of 270
- Called 50.0% of time when present
- Phage (with cluster) where this start called: MissWhite_46 (A2),

Start 45:

- Found in 1 of 295 (0.3%) of genes in pham
- Manual Annotations of this start: 1 of 270
- Called 100.0% of time when present
- Phage (with cluster) where this start called: Steamy_43 (A12),

Start 54:

- Found in 21 of 295 (7.1%) of genes in pham
- Manual Annotations of this start: 20 of 270
- Called 100.0% of time when present
- Phage (with cluster) where this start called: Anaysia_50 (A15), Anon_44 (A15), Battleship_50 (A15), Boohoo_50 (A15), DekHockey33_50 (A15), Epsocamisio_48 (A15), JSwag_48 (A15), KatherineG_51 (A15), LastResort_49 (A15), Looper_50 (A15), MinecraftSteve_50 (A15), Nebulosus_49 (A15), Oofda_50 (A15), ReMo_49 (A15), Remus_49 (A15), Rosalind_48 (A15), ShayRa_51 (A15), Soups_50 (A15), Strosahl_49 (A15), Switzerland_49 (A15), Waits_49 (A15),

Start 59:

- Found in 1 of 295 (0.3%) of genes in pham
- No Manual Annotations of this start.
- Called 100.0% of time when present
- Phage (with cluster) where this start called: Phlei_36 (A13),

Summary by clusters:

There are 15 clusters represented in this pham: A15, A14, A17, A16, A11, A10, A13, A12, A19, A20, A2, A, A4, A6, A9,

Info for manual annotations of cluster A:

- Start number 36 was manually annotated 1 time for cluster A.

Info for manual annotations of cluster A10:

- Start number 16 was manually annotated 1 time for cluster A10.
- Start number 17 was manually annotated 16 times for cluster A10.

Info for manual annotations of cluster A11:

- Start number 37 was manually annotated 24 times for cluster A11.

Info for manual annotations of cluster A12:

- Start number 35 was manually annotated 3 times for cluster A12.
- Start number 37 was manually annotated 1 time for cluster A12.
- Start number 45 was manually annotated 1 time for cluster A12.

Info for manual annotations of cluster A14:

- Start number 36 was manually annotated 3 times for cluster A14.

Info for manual annotations of cluster A15:

- Start number 41 was manually annotated 1 time for cluster A15.
- Start number 54 was manually annotated 20 times for cluster A15.

Info for manual annotations of cluster A16:

- Start number 32 was manually annotated 3 times for cluster A16.

Info for manual annotations of cluster A19:

- Start number 23 was manually annotated 1 time for cluster A19.

Info for manual annotations of cluster A2:

- Start number 19 was manually annotated 1 time for cluster A2.
- Start number 22 was manually annotated 1 time for cluster A2.
- Start number 23 was manually annotated 7 times for cluster A2.
- Start number 26 was manually annotated 9 times for cluster A2.
- Start number 40 was manually annotated 1 time for cluster A2.
- Start number 42 was manually annotated 1 time for cluster A2.
- Start number 44 was manually annotated 1 time for cluster A2.

Info for manual annotations of cluster A20:

- Start number 27 was manually annotated 1 time for cluster A20.

Info for manual annotations of cluster A4:

- Start number 26 was manually annotated 137 times for cluster A4.

Info for manual annotations of cluster A6:

- Start number 18 was manually annotated 1 time for cluster A6.

Info for manual annotations of cluster A9:

- Start number 29 was manually annotated 3 times for cluster A9.
- Start number 30 was manually annotated 1 time for cluster A9.
- Start number 34 was manually annotated 1 time for cluster A9.
- Start number 36 was manually annotated 28 times for cluster A9.
- Start number 37 was manually annotated 2 times for cluster A9.

Gene Information:

Gene: 40AC_48 Start: 33450, Stop: 33055, Start Num: 23

Candidate Starts for 40AC_48:

(Start: 23 @33450 has 8 MA's), (47, 33372), (60, 33354), (85, 33225), (91, 33102),

Gene: AbbysRanger_45 Start: 31867, Stop: 31544, Start Num: 26

Candidate Starts for AbbysRanger_45:

(Start: 26 @31867 has 146 MA's), (67, 31768), (69, 31759), (72, 31744), (77, 31714), (91, 31594),

Gene: Abdiel_46 Start: 31881, Stop: 31579, Start Num: 26

Candidate Starts for Abdiel_46:

(4, 32151), (Start: 26 @31881 has 146 MA's), (77, 31749), (86, 31710), (89, 31662), (91, 31629),

Gene: Achebe_44 Start: 31850, Stop: 31527, Start Num: 26

Candidate Starts for Achebe_44:

(Start: 26 @31850 has 146 MA's), (67, 31751), (69, 31742), (72, 31727), (77, 31697), (91, 31577),

Gene: Adzzy_49 Start: 31071, Stop: 30643, Start Num: 23

Candidate Starts for Adzzy_49:

(15, 31107), (Start: 23 @31071 has 8 MA's), (89, 30723), (91, 30690),

Gene: Albee_46 Start: 31880, Stop: 31578, Start Num: 26
Candidate Starts for Albee_46:
(4, 32150), (Start: 26 @31880 has 146 MA's), (77, 31748), (86, 31709), (89, 31661), (91, 31628),

Gene: Alberto7_47 Start: 32217, Stop: 31915, Start Num: 26
Candidate Starts for Alberto7_47:
(4, 32487), (Start: 26 @32217 has 146 MA's), (77, 32085), (86, 32046), (89, 31998), (91, 31965),

Gene: Aliter_47 Start: 32037, Stop: 31711, Start Num: 36
Candidate Starts for Aliter_47:
(Start: 36 @32037 has 32 MA's), (43, 32013), (57, 31971), (92, 31731),

Gene: Alma_47 Start: 32160, Stop: 31834, Start Num: 36
Candidate Starts for Alma_47:
(Start: 36 @32160 has 32 MA's), (43, 32136), (57, 32094), (92, 31854),

Gene: Anaysia_50 Start: 30853, Stop: 30560, Start Num: 54
Candidate Starts for Anaysia_50:
(Start: 54 @30853 has 20 MA's), (81, 30736), (89, 30643),

Gene: Aneem_48 Start: 31705, Stop: 31358, Start Num: 37
Candidate Starts for Aneem_48:
(Start: 37 @31705 has 27 MA's), (46, 31672), (52, 31651), (89, 31438), (91, 31405),

Gene: Annyong_46 Start: 31925, Stop: 31623, Start Num: 26
Candidate Starts for Annyong_46:
(4, 32195), (Start: 26 @31925 has 146 MA's), (77, 31793), (86, 31754), (89, 31706), (91, 31673),

Gene: Anon_44 Start: 29643, Stop: 29365, Start Num: 54
Candidate Starts for Anon_44:
(Start: 54 @29643 has 20 MA's), (89, 29448),

Gene: Anthony_42 Start: 29795, Stop: 29478, Start Num: 27
Candidate Starts for Anthony_42:
(8, 29948), (13, 29870), (Start: 27 @29795 has 1 MA's), (51, 29747), (53, 29741), (89, 29561), (92, 29501),

Gene: Arissanae_46 Start: 32694, Stop: 32350, Start Num: 29
Candidate Starts for Arissanae_46:
(Start: 29 @32694 has 3 MA's), (Start: 41 @32679 has 1 MA's), (57, 32631), (62, 32610), (77, 32556), (87, 32472), (92, 32370),

Gene: Arturo_45 Start: 32157, Stop: 31834, Start Num: 26
Candidate Starts for Arturo_45:
(Start: 26 @32157 has 146 MA's), (Start: 30 @32142 has 1 MA's), (77, 32004), (89, 31917), (91, 31884),

Gene: AvatarAhPeg_45 Start: 32379, Stop: 32056, Start Num: 26
Candidate Starts for AvatarAhPeg_45:
(Start: 26 @32379 has 146 MA's), (Start: 30 @32364 has 1 MA's), (69, 32271), (72, 32256), (77, 32226), (88, 32151), (91, 32106),

Gene: Avle17_46 Start: 31877, Stop: 31575, Start Num: 26
Candidate Starts for Avle17_46:
(Start: 26 @31877 has 146 MA's), (77, 31745), (86, 31706), (89, 31658), (91, 31625),

Gene: Baby16_46 Start: 31891, Stop: 31589, Start Num: 26
Candidate Starts for Baby16_46:
(4, 32161), (Start: 26 @31891 has 146 MA's), (77, 31759), (86, 31720), (89, 31672), (91, 31639),

Gene: Bachome_49 Start: 31693, Stop: 31346, Start Num: 37
Candidate Starts for Bachome_49:
(Start: 37 @31693 has 27 MA's), (46, 31660), (52, 31639), (89, 31426), (91, 31393),

Gene: Backyardigan_44 Start: 31883, Stop: 31560, Start Num: 26
Candidate Starts for Backyardigan_44:
(Start: 26 @31883 has 146 MA's), (67, 31784), (69, 31775), (72, 31760), (77, 31730), (91, 31610),

Gene: Badger_44 Start: 31851, Stop: 31528, Start Num: 26
Candidate Starts for Badger_44:
(Start: 26 @31851 has 146 MA's), (67, 31752), (69, 31743), (72, 31728), (77, 31698), (91, 31578),

Gene: BangNhom_47 Start: 32302, Stop: 32000, Start Num: 26
Candidate Starts for BangNhom_47:
(4, 32572), (Start: 26 @32302 has 146 MA's), (77, 32170), (86, 32131), (91, 32050),

Gene: Bartimeaus_46 Start: 31882, Stop: 31580, Start Num: 26
Candidate Starts for Bartimeaus_46:
(4, 32152), (Start: 26 @31882 has 146 MA's), (77, 31750), (86, 31711), (89, 31663), (91, 31630),

Gene: Battleship_50 Start: 30586, Stop: 30293, Start Num: 54
Candidate Starts for Battleship_50:
(Start: 54 @30586 has 20 MA's), (81, 30469), (89, 30376),

Gene: Beemo_47 Start: 32159, Stop: 31833, Start Num: 36
Candidate Starts for Beemo_47:
(Start: 36 @32159 has 32 MA's), (43, 32135), (57, 32093), (92, 31853),

Gene: BellusTerra_47 Start: 31881, Stop: 31579, Start Num: 26
Candidate Starts for BellusTerra_47:
(Start: 26 @31881 has 146 MA's), (77, 31749), (86, 31710), (89, 31662), (91, 31629),

Gene: Blackmoor_46 Start: 31882, Stop: 31580, Start Num: 26
Candidate Starts for Blackmoor_46:
(4, 32152), (Start: 26 @31882 has 146 MA's), (77, 31750), (86, 31711), (89, 31663), (91, 31630),

Gene: Blinn1_51 Start: 31121, Stop: 30666, Start Num: 18
Candidate Starts for Blinn1_51:
(Start: 18 @31121 has 1 MA's), (Start: 23 @31094 has 8 MA's), (51, 30998), (61, 30962), (82, 30845),
(91, 30713),

Gene: BogosyJay_46 Start: 31869, Stop: 31543, Start Num: 36
Candidate Starts for BogosyJay_46:
(Start: 36 @31869 has 32 MA's), (43, 31845), (57, 31803), (76, 31761), (92, 31563),

Gene: Bombshell_46 Start: 31877, Stop: 31575, Start Num: 26
Candidate Starts for Bombshell_46:
(4, 32147), (Start: 26 @31877 has 146 MA's), (77, 31745), (86, 31706), (89, 31658), (91, 31625),

Gene: Boohoo_50 Start: 30853, Stop: 30560, Start Num: 54
Candidate Starts for Boohoo_50:
(Start: 54 @30853 has 20 MA's), (81, 30736), (89, 30643),

Gene: Bowtie_48 Start: 31712, Stop: 31365, Start Num: 37
Candidate Starts for Bowtie_48:
(Start: 37 @31712 has 27 MA's), (46, 31679), (52, 31658), (89, 31445), (91, 31412),

Gene: Bradman_46 Start: 31085, Stop: 30678, Start Num: 23
Candidate Starts for Bradman_46:
(Start: 23 @31085 has 8 MA's), (33, 31049), (62, 30965), (89, 30758), (91, 30725),

Gene: Broseidon_46 Start: 31882, Stop: 31580, Start Num: 26
Candidate Starts for Broseidon_46:
(4, 32152), (Start: 26 @31882 has 146 MA's), (77, 31750), (86, 31711), (89, 31663), (91, 31630),

Gene: Bruiser_45 Start: 31880, Stop: 31578, Start Num: 26
Candidate Starts for Bruiser_45:
(Start: 26 @31880 has 146 MA's), (77, 31748), (86, 31709), (89, 31661), (91, 31628),

Gene: BubbleTrouble_45 Start: 31880, Stop: 31578, Start Num: 26
Candidate Starts for BubbleTrouble_45:
(4, 32150), (Start: 26 @31880 has 146 MA's), (77, 31748), (86, 31709), (89, 31661), (91, 31628),

Gene: Bud_47 Start: 31267, Stop: 30920, Start Num: 37
Candidate Starts for Bud_47:
(Start: 37 @31267 has 27 MA's), (46, 31234), (52, 31213), (89, 31000), (91, 30967),

Gene: Bumblebee11_44 Start: 31853, Stop: 31530, Start Num: 26
Candidate Starts for Bumblebee11_44:
(Start: 26 @31853 has 146 MA's), (67, 31754), (69, 31745), (72, 31730), (77, 31700), (91, 31580),

Gene: Burger_44 Start: 31880, Stop: 31578, Start Num: 26
Candidate Starts for Burger_44:
(4, 32150), (Start: 26 @31880 has 146 MA's), (77, 31748), (86, 31709), (89, 31661), (91, 31628),

Gene: Caelakin_46 Start: 31880, Stop: 31578, Start Num: 26
Candidate Starts for Caelakin_46:
(4, 32150), (Start: 26 @31880 has 146 MA's), (77, 31748), (86, 31709), (89, 31661), (91, 31628),

Gene: Camperdownii_44 Start: 31553, Stop: 31251, Start Num: 26
Candidate Starts for Camperdownii_44:
(Start: 26 @31553 has 146 MA's), (77, 31421), (86, 31382), (89, 31334), (91, 31301),

Gene: Caraxes_47 Start: 30723, Stop: 30316, Start Num: 23
Candidate Starts for Caraxes_47:
(Start: 23 @30723 has 8 MA's), (57, 30624), (80, 30510), (89, 30396), (91, 30363),

Gene: Catalina_48 Start: 32110, Stop: 31784, Start Num: 36

Candidate Starts for Catalina_48:

(Start: 36 @32110 has 32 MA's), (43, 32086), (57, 32044), (92, 31804),

Gene: CentreCat_46 Start: 31883, Stop: 31581, Start Num: 26

Candidate Starts for CentreCat_46:

(4, 32153), (Start: 26 @31883 has 146 MA's), (77, 31751), (86, 31712), (89, 31664), (91, 31631),

Gene: Cerulean_47 Start: 32303, Stop: 32001, Start Num: 26

Candidate Starts for Cerulean_47:

(4, 32573), (Start: 26 @32303 has 146 MA's), (77, 32171), (86, 32132), (91, 32051),

Gene: ChampagnePapi_48 Start: 32302, Stop: 32000, Start Num: 26

Candidate Starts for ChampagnePapi_48:

(4, 32572), (Start: 26 @32302 has 146 MA's), (77, 32170), (86, 32131), (91, 32050),

Gene: Chaph_46 Start: 31891, Stop: 31589, Start Num: 26

Candidate Starts for Chaph_46:

(4, 32161), (Start: 26 @31891 has 146 MA's), (77, 31759), (86, 31720), (89, 31672), (91, 31639),

Gene: Chargerpower_46 Start: 31054, Stop: 30704, Start Num: 36

Candidate Starts for Chargerpower_46:

(Start: 36 @31054 has 32 MA's), (57, 30991), (78, 30910), (89, 30784), (92, 30724), (93, 30715),

Gene: Charm_46 Start: 31899, Stop: 31555, Start Num: 36

Candidate Starts for Charm_46:

(Start: 36 @31899 has 32 MA's), (Start: 41 @31884 has 1 MA's), (43, 31878), (57, 31836), (67, 31794), (77, 31761), (92, 31575), (93, 31566),

Gene: Chupacabra_44 Start: 31467, Stop: 31129, Start Num: 17

Candidate Starts for Chupacabra_44:

(7, 31611), (11, 31560), (Start: 17 @31467 has 16 MA's), (49, 31407), (75, 31317), (77, 31302), (88, 31224),

Gene: Cici_45 Start: 31868, Stop: 31545, Start Num: 26

Candidate Starts for Cici_45:

(Start: 26 @31868 has 146 MA's), (67, 31769), (69, 31760), (72, 31745), (77, 31715), (91, 31595),

Gene: Cindaradix_43 Start: 31493, Stop: 31170, Start Num: 26

Candidate Starts for Cindaradix_43:

(Start: 26 @31493 has 146 MA's), (69, 31385), (77, 31340), (88, 31265), (91, 31220),

Gene: Cintron_45 Start: 31860, Stop: 31558, Start Num: 26

Candidate Starts for Cintron_45:

(4, 32130), (Start: 26 @31860 has 146 MA's), (77, 31728), (86, 31689), (89, 31641), (91, 31608),

Gene: Citius_46 Start: 31901, Stop: 31599, Start Num: 26

Candidate Starts for Citius_46:

(4, 32171), (Start: 26 @31901 has 146 MA's), (77, 31769), (86, 31730), (89, 31682), (91, 31649),

Gene: Clarenza_45 Start: 31877, Stop: 31575, Start Num: 26

Candidate Starts for Clarenza_45:

(4, 32147), (Start: 26 @31877 has 146 MA's), (77, 31745), (86, 31706), (89, 31658), (91, 31625),

Gene: Cocoaberry_46 Start: 31884, Stop: 31582, Start Num: 26
Candidate Starts for Cocoaberry_46:
(Start: 26 @31884 has 146 MA's), (77, 31752), (86, 31713), (89, 31665), (91, 31632),

Gene: Commander_46 Start: 31879, Stop: 31577, Start Num: 26
Candidate Starts for Commander_46:
(4, 32149), (Start: 26 @31879 has 146 MA's), (77, 31747), (86, 31708), (89, 31660), (91, 31627),

Gene: Connomayer_46 Start: 31880, Stop: 31578, Start Num: 26
Candidate Starts for Connomayer_46:
(4, 32150), (Start: 26 @31880 has 146 MA's), (77, 31748), (86, 31709), (89, 31661), (91, 31628),

Gene: Conquerage_47 Start: 32133, Stop: 31807, Start Num: 36
Candidate Starts for Conquerage_47:
(Start: 36 @32133 has 32 MA's), (43, 32109), (57, 32067), (92, 31827),

Gene: D29_46 Start: 31906, Stop: 31496, Start Num: 26
Candidate Starts for D29_46:
(6, 32113), (Start: 26 @31906 has 146 MA's), (63, 31786), (68, 31762), (70, 31756), (84, 31663), (89, 31576), (91, 31543),

Gene: D32_49 Start: 31906, Stop: 31496, Start Num: 26
Candidate Starts for D32_49:
(6, 32113), (Start: 26 @31906 has 146 MA's), (63, 31786), (68, 31762), (70, 31756), (84, 31663), (89, 31576), (91, 31543),

Gene: DBQu4n_49 Start: 31906, Stop: 31496, Start Num: 26
Candidate Starts for DBQu4n_49:
(2, 32233), (3, 32221), (Start: 26 @31906 has 146 MA's), (63, 31786), (68, 31762), (70, 31756), (84, 31663), (89, 31576), (91, 31543),

Gene: Darrell_48 Start: 32497, Stop: 32153, Start Num: 29
Candidate Starts for Darrell_48:
(20, 32539), (24, 32518), (Start: 29 @32497 has 3 MA's), (Start: 41 @32482 has 1 MA's), (57, 32434), (62, 32413), (77, 32359), (92, 32173),

Gene: DARTHPhader_44 Start: 32954, Stop: 32610, Start Num: 35
Candidate Starts for DARTHPhader_44:
(28, 32966), (Start: 32 @32960 has 3 MA's), (Start: 35 @32954 has 3 MA's), (47, 32912), (55, 32891), (76, 32837), (77, 32825), (87, 32732), (89, 32690), (92, 32630),

Gene: Datway_45 Start: 31839, Stop: 31516, Start Num: 26
Candidate Starts for Datway_45:
(Start: 26 @31839 has 146 MA's), (69, 31731), (91, 31566),

Gene: Deano_45 Start: 31888, Stop: 31586, Start Num: 26
Candidate Starts for Deano_45:
(Start: 26 @31888 has 146 MA's), (48, 31846), (77, 31756), (86, 31717), (89, 31669), (91, 31636),

Gene: DekHockey33_50 Start: 31068, Stop: 30775, Start Num: 54
Candidate Starts for DekHockey33_50:
(Start: 54 @31068 has 20 MA's), (81, 30951), (89, 30858),

Gene: Dhanush_46 Start: 31883, Stop: 31581, Start Num: 26
Candidate Starts for Dhanush_46:
(4, 32153), (Start: 26 @31883 has 146 MA's), (77, 31751), (86, 31712), (89, 31664), (91, 31631),

Gene: DirtyDunning_45 Start: 31898, Stop: 31575, Start Num: 26
Candidate Starts for DirtyDunning_45:
(Start: 26 @31898 has 146 MA's), (Start: 30 @31883 has 1 MA's), (77, 31745), (86, 31706), (89, 31658), (91, 31625),

Gene: DontArgue_44 Start: 30703, Stop: 30368, Start Num: 16
Candidate Starts for DontArgue_44:
(5, 30847), (7, 30841), (Start: 16 @30703 has 1 MA's), (88, 30463),

Gene: Drake94_43 Start: 30743, Stop: 30387, Start Num: 17
Candidate Starts for Drake94_43:
(7, 30887), (Start: 17 @30743 has 16 MA's), (77, 30560), (88, 30482),

Gene: DreamTeam1_46 Start: 31773, Stop: 31429, Start Num: 36
Candidate Starts for DreamTeam1_46:
(Start: 36 @31773 has 32 MA's), (Start: 41 @31758 has 1 MA's), (43, 31752), (57, 31710), (58, 31707), (67, 31668), (77, 31635), (92, 31449), (93, 31440),

Gene: Druantia_46 Start: 31883, Stop: 31581, Start Num: 26
Candidate Starts for Druantia_46:
(4, 32153), (Start: 26 @31883 has 146 MA's), (77, 31751), (86, 31712), (89, 31664), (91, 31631),

Gene: Duplo_49 Start: 31944, Stop: 31534, Start Num: 26
Candidate Starts for Duplo_49:
(2, 32271), (3, 32259), (Start: 26 @31944 has 146 MA's), (63, 31824), (68, 31800), (70, 31794), (84, 31701), (89, 31614), (91, 31581),

Gene: DustyMartin_49 Start: 31547, Stop: 31209, Start Num: 17
Candidate Starts for DustyMartin_49:
(Start: 17 @31547 has 16 MA's), (49, 31487), (77, 31382), (88, 31304),

Gene: Eagle_46 Start: 31905, Stop: 31603, Start Num: 26
Candidate Starts for Eagle_46:
(4, 32175), (Start: 26 @31905 has 146 MA's), (77, 31773), (86, 31734), (89, 31686), (91, 31653),

Gene: EagleEye_49 Start: 31670, Stop: 31308, Start Num: 32
Candidate Starts for EagleEye_49:
(Start: 32 @31670 has 3 MA's), (39, 31646), (89, 31388),

Gene: Eaglepride_46 Start: 31543, Stop: 31214, Start Num: 16
Candidate Starts for Eaglepride_46:
(7, 31681), (9, 31654), (Start: 16 @31543 has 1 MA's), (74, 31393), (88, 31309),

Gene: Eapen_46 Start: 31875, Stop: 31573, Start Num: 26
Candidate Starts for Eapen_46:
(4, 32145), (Start: 26 @31875 has 146 MA's), (77, 31743), (86, 31704), (89, 31656), (91, 31623),

Gene: Ebony_47 Start: 31284, Stop: 30937, Start Num: 37
Candidate Starts for Ebony_47:

(Start: 37 @31284 has 27 MA's), (46, 31251), (52, 31230), (89, 31017), (91, 30984),

Gene: Edison31_44 Start: 31487, Stop: 31149, Start Num: 17

Candidate Starts for Edison31_44:

(7, 31631), (11, 31580), (Start: 17 @31487 has 16 MA's), (75, 31337), (77, 31322), (88, 31244),

Gene: EdogawaKiddo_45 Start: 32110, Stop: 31784, Start Num: 36

Candidate Starts for EdogawaKiddo_45:

(Start: 36 @32110 has 32 MA's), (43, 32086), (57, 32044), (92, 31804),

Gene: Eidsmoe_47 Start: 32173, Stop: 31847, Start Num: 36

Candidate Starts for Eidsmoe_47:

(Start: 36 @32173 has 32 MA's), (43, 32149), (57, 32107), (92, 31867),

Gene: Elephantoon_46 Start: 31477, Stop: 31130, Start Num: 29

Candidate Starts for Elephantoon_46:

(Start: 29 @31477 has 3 MA's), (43, 31453), (57, 31411), (77, 31336), (79, 31318), (92, 31150),

Gene: EmyBug_46 Start: 32175, Stop: 31849, Start Num: 36

Candidate Starts for EmyBug_46:

(Start: 36 @32175 has 32 MA's), (43, 32151), (57, 32109), (92, 31869),

Gene: Epsocamisio_48 Start: 30391, Stop: 30098, Start Num: 54

Candidate Starts for Epsocamisio_48:

(Start: 54 @30391 has 20 MA's), (81, 30274), (89, 30181),

Gene: Eris_45 Start: 31880, Stop: 31578, Start Num: 26

Candidate Starts for Eris_45:

(4, 32150), (Start: 26 @31880 has 146 MA's), (77, 31748), (86, 31709), (89, 31661), (91, 31628),

Gene: Eros_46 Start: 31882, Stop: 31580, Start Num: 26

Candidate Starts for Eros_46:

(4, 32152), (Start: 26 @31882 has 146 MA's), (77, 31750), (86, 31711), (89, 31663), (91, 31630),

Gene: Et2Brutus_46 Start: 31244, Stop: 30897, Start Num: 37

Candidate Starts for Et2Brutus_46:

(Start: 37 @31244 has 27 MA's), (46, 31211), (52, 31190), (89, 30977), (91, 30944),

Gene: Eurydice_47 Start: 31877, Stop: 31575, Start Num: 26

Candidate Starts for Eurydice_47:

(4, 32147), (Start: 26 @31877 has 146 MA's), (77, 31745), (86, 31706), (89, 31658), (91, 31625),

Gene: ExplosioNervosa_47 Start: 32193, Stop: 31867, Start Num: 36

Candidate Starts for ExplosioNervosa_47:

(Start: 36 @32193 has 32 MA's), (43, 32169), (57, 32127), (92, 31887),

Gene: Fayely_47 Start: 32142, Stop: 31816, Start Num: 36

Candidate Starts for Fayely_47:

(Start: 36 @32142 has 32 MA's), (43, 32118), (57, 32076), (92, 31836),

Gene: Fibonacci_47 Start: 31259, Stop: 30912, Start Num: 37

Candidate Starts for Fibonacci_47:

(Start: 37 @31259 has 27 MA's), (46, 31226), (52, 31205), (89, 30992), (91, 30959),

Gene: Flaverint_48 Start: 31706, Stop: 31359, Start Num: 37

Candidate Starts for Flaverint_48:

(Start: 37 @31706 has 27 MA's), (46, 31673), (52, 31652), (89, 31439), (91, 31406),

Gene: Florean_46 Start: 31879, Stop: 31577, Start Num: 26

Candidate Starts for Florean_46:

(4, 32149), (Start: 26 @31879 has 146 MA's), (77, 31747), (86, 31708), (89, 31660), (91, 31627),

Gene: Flux_46 Start: 31879, Stop: 31577, Start Num: 26

Candidate Starts for Flux_46:

(4, 32149), (Start: 26 @31879 has 146 MA's), (77, 31747), (86, 31708), (89, 31660), (91, 31627),

Gene: Funston_45 Start: 31880, Stop: 31578, Start Num: 26

Candidate Starts for Funston_45:

(Start: 26 @31880 has 146 MA's), (77, 31748), (86, 31709), (89, 31661), (91, 31628),

Gene: Gadost_46 Start: 31884, Stop: 31582, Start Num: 26

Candidate Starts for Gadost_46:

(Start: 26 @31884 has 146 MA's), (77, 31752), (86, 31713), (89, 31665), (91, 31632),

Gene: Gail_52 Start: 33875, Stop: 33528, Start Num: 36

Candidate Starts for Gail_52:

(25, 33899), (Start: 36 @33875 has 32 MA's), (57, 33815), (89, 33608), (92, 33548), (93, 33539),

Gene: Gilberta_48 Start: 31696, Stop: 31349, Start Num: 37

Candidate Starts for Gilberta_48:

(Start: 37 @31696 has 27 MA's), (46, 31663), (52, 31642), (89, 31429), (91, 31396),

Gene: Goose_45 Start: 31271, Stop: 30933, Start Num: 17

Candidate Starts for Goose_45:

(7, 31415), (11, 31364), (Start: 17 @31271 has 16 MA's), (49, 31211), (75, 31121), (77, 31106), (88, 31028),

Gene: HamSlice_45 Start: 31878, Stop: 31576, Start Num: 26

Candidate Starts for HamSlice_45:

(4, 32148), (Start: 26 @31878 has 146 MA's), (77, 31746), (86, 31707), (89, 31659), (91, 31626),

Gene: Hanray_45 Start: 32114, Stop: 31788, Start Num: 36

Candidate Starts for Hanray_45:

(Start: 36 @32114 has 32 MA's), (43, 32090), (57, 32048), (92, 31808),

Gene: Happiness_45 Start: 31885, Stop: 31583, Start Num: 26

Candidate Starts for Happiness_45:

(4, 32155), (Start: 26 @31885 has 146 MA's), (77, 31753), (86, 31714), (89, 31666), (91, 31633),

Gene: Holec_46 Start: 32133, Stop: 31807, Start Num: 36

Candidate Starts for Holec_46:

(Start: 36 @32133 has 32 MA's), (43, 32109), (57, 32067), (92, 31827),

Gene: Holli_45 Start: 31670, Stop: 31368, Start Num: 26

Candidate Starts for Holli_45:

(4, 31940), (Start: 26 @31670 has 146 MA's), (77, 31538), (86, 31499), (89, 31451), (91, 31418),

Gene: HortumSL17_47 Start: 32109, Stop: 31783, Start Num: 36
Candidate Starts for HortumSL17_47:
(Start: 36 @32109 has 32 MA's), (43, 32085), (57, 32043), (92, 31803),

Gene: Houdini22_46 Start: 31884, Stop: 31582, Start Num: 26
Candidate Starts for Houdini22_46:
(Start: 26 @31884 has 146 MA's), (77, 31752), (86, 31713), (89, 31665), (91, 31632),

Gene: Hutc2_47 Start: 31259, Stop: 30912, Start Num: 37
Candidate Starts for Hutc2_47:
(Start: 37 @31259 has 27 MA's), (46, 31226), (52, 31205), (89, 30992), (91, 30959),

Gene: Huxley_46 Start: 31941, Stop: 31639, Start Num: 26
Candidate Starts for Huxley_46:
(Start: 26 @31941 has 146 MA's), (77, 31809), (86, 31770), (89, 31722), (91, 31689),

Gene: ICleared_46 Start: 31909, Stop: 31607, Start Num: 26
Candidate Starts for ICleared_46:
(4, 32179), (Start: 26 @31909 has 146 MA's), (77, 31777), (86, 31738), (89, 31690), (91, 31657),

Gene: Iceman_46 Start: 32166, Stop: 31864, Start Num: 26
Candidate Starts for Iceman_46:
(4, 32436), (Start: 26 @32166 has 146 MA's), (77, 32034), (86, 31995), (89, 31947), (91, 31914),

Gene: Insomnia_48 Start: 31764, Stop: 31417, Start Num: 37
Candidate Starts for Insomnia_48:
(Start: 37 @31764 has 27 MA's), (46, 31731), (52, 31710), (89, 31497), (91, 31464),

Gene: Iracema64_47 Start: 32144, Stop: 31842, Start Num: 26
Candidate Starts for Iracema64_47:
(4, 32414), (Start: 26 @32144 has 146 MA's), (77, 32012), (86, 31973), (89, 31925), (91, 31892),

Gene: Iwokeuplikedis_50 Start: 32216, Stop: 31788, Start Num: 22
Candidate Starts for Iwokeuplikedis_50:
(Start: 22 @32216 has 1 MA's), (82, 31967), (91, 31835),

Gene: JSwag_48 Start: 30329, Stop: 30036, Start Num: 54
Candidate Starts for JSwag_48:
(Start: 54 @30329 has 20 MA's), (81, 30212), (89, 30119),

Gene: Jabith_48 Start: 31765, Stop: 31418, Start Num: 37
Candidate Starts for Jabith_48:
(Start: 37 @31765 has 27 MA's), (46, 31732), (52, 31711), (89, 31498), (91, 31465),

Gene: Jaykayelowell_44 Start: 31873, Stop: 31571, Start Num: 26
Candidate Starts for Jaykayelowell_44:
(4, 32143), (Start: 26 @31873 has 146 MA's), (77, 31741), (86, 31702), (89, 31654), (91, 31621),

Gene: Jeeves_52 Start: 32647, Stop: 32300, Start Num: 36
Candidate Starts for Jeeves_52:
(25, 32671), (Start: 36 @32647 has 32 MA's), (57, 32587), (89, 32380), (92, 32320),

Gene: JetBlade_46 Start: 31874, Stop: 31572, Start Num: 26
Candidate Starts for JetBlade_46:
(4, 32144), (Start: 26 @31874 has 146 MA's), (77, 31742), (86, 31703), (89, 31655), (91, 31622),

Gene: Jiawan_45 Start: 32146, Stop: 31820, Start Num: 36
Candidate Starts for Jiawan_45:
(Start: 36 @32146 has 32 MA's), (43, 32122), (57, 32080), (92, 31840),

Gene: JoongJeon_45 Start: 31877, Stop: 31575, Start Num: 26
Candidate Starts for JoongJeon_45:
(Start: 26 @31877 has 146 MA's), (77, 31745), (86, 31706), (89, 31658), (91, 31625),

Gene: Joselito_48 Start: 31705, Stop: 31358, Start Num: 37
Candidate Starts for Joselito_48:
(Start: 37 @31705 has 27 MA's), (46, 31672), (52, 31651), (89, 31438), (91, 31405),

Gene: Journey13_41 Start: 30529, Stop: 30176, Start Num: 42
Candidate Starts for Journey13_41:
(Start: 42 @30529 has 1 MA's), (Start: 44 @30526 has 1 MA's), (47, 30508), (56, 30484), (89, 30256),

Gene: Jsquared_45 Start: 31025, Stop: 30618, Start Num: 23
Candidate Starts for Jsquared_45:
(Start: 23 @31025 has 8 MA's), (57, 30926), (62, 30905), (89, 30698), (91, 30665),

Gene: KFPoly_45 Start: 31874, Stop: 31572, Start Num: 26
Candidate Starts for KFPoly_45:
(4, 32144), (Start: 26 @31874 has 146 MA's), (77, 31742), (86, 31703), (89, 31655), (91, 31622),

Gene: Kamy_46 Start: 31882, Stop: 31580, Start Num: 26
Candidate Starts for Kamy_46:
(4, 32152), (Start: 26 @31882 has 146 MA's), (77, 31750), (86, 31711), (89, 31663), (91, 31630),

Gene: Katalie136_45 Start: 31853, Stop: 31530, Start Num: 26
Candidate Starts for Katalie136_45:
(Start: 26 @31853 has 146 MA's), (67, 31754), (69, 31745), (72, 31730), (77, 31700), (91, 31580),

Gene: KatherineG_51 Start: 31068, Stop: 30775, Start Num: 54
Candidate Starts for KatherineG_51:
(Start: 54 @31068 has 20 MA's), (81, 30951), (89, 30858),

Gene: Kerberos_49 Start: 31906, Stop: 31496, Start Num: 26
Candidate Starts for Kerberos_49:
(2, 32233), (3, 32221), (Start: 26 @31906 has 146 MA's), (63, 31786), (68, 31762), (70, 31756), (84, 31663), (89, 31576), (91, 31543),

Gene: Keziacharles14_47 Start: 33144, Stop: 32797, Start Num: 36
Candidate Starts for Keziacharles14_47:
(Start: 36 @33144 has 32 MA's), (43, 33120), (57, 33078), (76, 33015), (77, 33003), (92, 32817), (93, 32808),

Gene: Kimona_46 Start: 30459, Stop: 30046, Start Num: 23
Candidate Starts for Kimona_46:
(Start: 23 @30459 has 8 MA's), (49, 30369), (65, 30324), (83, 30228), (91, 30099),

Gene: Kingmustik0402_46 Start: 31869, Stop: 31567, Start Num: 26
Candidate Starts for Kingmustik0402_46:
(4, 32139), (Start: 26 @31869 has 146 MA's), (77, 31737), (86, 31698), (89, 31650), (91, 31617),

Gene: KittenMittens_42 Start: 30751, Stop: 30395, Start Num: 17
Candidate Starts for KittenMittens_42:
(7, 30895), (Start: 17 @30751 has 16 MA's), (77, 30568), (88, 30490),

Gene: Koduck_47 Start: 31317, Stop: 30889, Start Num: 19
Candidate Starts for Koduck_47:
(Start: 19 @31317 has 1 MA's), (31, 31263), (Start: 42 @31239 has 1 MA's), (57, 31197), (62, 31176),
(67, 31155), (71, 31134), (89, 30969), (91, 30936),

Gene: Koreni_45 Start: 31561, Stop: 31259, Start Num: 26
Candidate Starts for Koreni_45:
(4, 31831), (Start: 26 @31561 has 146 MA's), (77, 31429), (86, 31390), (89, 31342), (91, 31309),

Gene: Kratark_46 Start: 32040, Stop: 31717, Start Num: 26
Candidate Starts for Kratark_46:
(Start: 26 @32040 has 146 MA's), (Start: 30 @32025 has 1 MA's), (77, 31887), (89, 31800), (91,
31767),

Gene: Kremtemulon_46 Start: 31831, Stop: 31529, Start Num: 26
Candidate Starts for Kremtemulon_46:
(4, 32101), (Start: 26 @31831 has 146 MA's), (77, 31699), (86, 31660), (91, 31579),

Gene: Kristoff_45 Start: 31839, Stop: 31501, Start Num: 17
Candidate Starts for Kristoff_45:
(7, 31983), (11, 31932), (Start: 17 @31839 has 16 MA's), (75, 31689), (77, 31674), (88, 31596),

Gene: Kyee_46 Start: 31878, Stop: 31576, Start Num: 26
Candidate Starts for Kyee_46:
(Start: 26 @31878 has 146 MA's), (77, 31746), (86, 31707), (89, 31659), (91, 31626),

Gene: L5_46 Start: 31389, Stop: 30961, Start Num: 19
Candidate Starts for L5_46:
(Start: 19 @31389 has 1 MA's), (31, 31335), (Start: 42 @31311 has 1 MA's), (57, 31269), (62, 31248),
(67, 31227), (71, 31206), (89, 31041), (91, 31008),

Gene: LHTSCC_48 Start: 32302, Stop: 32000, Start Num: 26
Candidate Starts for LHTSCC_48:
(4, 32572), (Start: 26 @32302 has 146 MA's), (77, 32170), (86, 32131), (91, 32050),

Gene: LappelDuVide_46 Start: 31879, Stop: 31577, Start Num: 26
Candidate Starts for LappelDuVide_46:
(4, 32149), (Start: 26 @31879 has 146 MA's), (77, 31747), (86, 31708), (89, 31660), (91, 31627),

Gene: LastResort_49 Start: 30629, Stop: 30336, Start Num: 54
Candidate Starts for LastResort_49:
(Start: 54 @30629 has 20 MA's), (81, 30512), (89, 30419),

Gene: Lemur_46 Start: 31877, Stop: 31575, Start Num: 26

Candidate Starts for Lemur_46:

(4, 32147), (Start: 26 @31877 has 146 MA's), (77, 31745), (86, 31706), (89, 31658), (91, 31625),

Gene: LeoAvram_46 Start: 31880, Stop: 31578, Start Num: 26

Candidate Starts for LeoAvram_46:

(4, 32150), (Start: 26 @31880 has 146 MA's), (77, 31748), (86, 31709), (89, 31661), (91, 31628),

Gene: Lilleskat_45 Start: 32063, Stop: 31737, Start Num: 36

Candidate Starts for Lilleskat_45:

(Start: 36 @32063 has 32 MA's), (43, 32039), (57, 31997), (92, 31757),

Gene: LittleB_46 Start: 31881, Stop: 31579, Start Num: 26

Candidate Starts for LittleB_46:

(4, 32151), (Start: 26 @31881 has 146 MA's), (77, 31749), (86, 31710), (89, 31662), (91, 31629),

Gene: LittleGuy_46 Start: 31776, Stop: 31474, Start Num: 26

Candidate Starts for LittleGuy_46:

(4, 32046), (Start: 26 @31776 has 146 MA's), (77, 31644), (86, 31605), (89, 31557), (91, 31524),

Gene: LochMonster_47 Start: 32116, Stop: 31814, Start Num: 26

Candidate Starts for LochMonster_47:

(4, 32386), (Start: 26 @32116 has 146 MA's), (48, 32074), (77, 31984), (86, 31945), (89, 31897), (91, 31864),

Gene: LoneWolf_47 Start: 31870, Stop: 31502, Start Num: 34

Candidate Starts for LoneWolf_47:

(10, 32050), (12, 31999), (14, 31975), (Start: 34 @31870 has 1 MA's), (43, 31846), (57, 31804), (67, 31762), (92, 31522),

Gene: Looper_50 Start: 30606, Stop: 30313, Start Num: 54

Candidate Starts for Looper_50:

(Start: 54 @30606 has 20 MA's), (81, 30489), (89, 30396),

Gene: Lorenzo_46 Start: 31880, Stop: 31578, Start Num: 26

Candidate Starts for Lorenzo_46:

(4, 32150), (Start: 26 @31880 has 146 MA's), (77, 31748), (86, 31709), (89, 31661), (91, 31628),

Gene: Luchador_52 Start: 34435, Stop: 34088, Start Num: 36

Candidate Starts for Luchador_52:

(25, 34459), (Start: 36 @34435 has 32 MA's), (57, 34375), (89, 34168), (92, 34108),

Gene: Lucivia_48 Start: 31754, Stop: 31407, Start Num: 37

Candidate Starts for Lucivia_48:

(Start: 37 @31754 has 27 MA's), (46, 31721), (52, 31700), (89, 31487), (91, 31454),

Gene: Lucyedi_48 Start: 31865, Stop: 31503, Start Num: 32

Candidate Starts for Lucyedi_48:

(Start: 32 @31865 has 3 MA's), (39, 31841), (89, 31583),

Gene: Lunsford_47 Start: 31874, Stop: 31572, Start Num: 26

Candidate Starts for Lunsford_47:

(4, 32144), (Start: 26 @31874 has 146 MA's), (77, 31742), (86, 31703), (89, 31655), (91, 31622),

Gene: MaCh_48 Start: 31692, Stop: 31345, Start Num: 37
Candidate Starts for MaCh_48:
(Start: 37 @31692 has 27 MA's), (46, 31659), (52, 31638), (89, 31425), (91, 31392),

Gene: Mabel_47 Start: 31294, Stop: 30947, Start Num: 37
Candidate Starts for Mabel_47:
(Start: 37 @31294 has 27 MA's), (46, 31261), (52, 31240), (89, 31027), (91, 30994),

Gene: MajorMajor_46 Start: 31085, Stop: 30678, Start Num: 23
Candidate Starts for MajorMajor_46:
(Start: 23 @31085 has 8 MA's), (33, 31049), (62, 30965), (89, 30758), (91, 30725),

Gene: Maminiaina_46 Start: 31851, Stop: 31525, Start Num: 36
Candidate Starts for Maminiaina_46:
(Start: 36 @31851 has 32 MA's), (43, 31827), (57, 31785), (76, 31743), (92, 31545),

Gene: Maverick_46 Start: 31880, Stop: 31578, Start Num: 26
Candidate Starts for Maverick_46:
(Start: 26 @31880 has 146 MA's), (77, 31748), (86, 31709), (89, 31661), (91, 31628),

Gene: Maxo_47 Start: 31882, Stop: 31580, Start Num: 26
Candidate Starts for Maxo_47:
(4, 32152), (Start: 26 @31882 has 146 MA's), (77, 31750), (86, 31711), (89, 31663), (91, 31630),

Gene: Mazhar510_46 Start: 31881, Stop: 31579, Start Num: 26
Candidate Starts for Mazhar510_46:
(Start: 26 @31881 has 146 MA's), (77, 31749), (86, 31710), (89, 31662), (91, 31629),

Gene: Medusa_46 Start: 31879, Stop: 31577, Start Num: 26
Candidate Starts for Medusa_46:
(4, 32149), (Start: 26 @31879 has 146 MA's), (77, 31747), (86, 31708), (89, 31660), (91, 31627),

Gene: MeeZee_46 Start: 31877, Stop: 31575, Start Num: 26
Candidate Starts for MeeZee_46:
(4, 32147), (Start: 26 @31877 has 146 MA's), (77, 31745), (86, 31706), (89, 31658), (91, 31625),

Gene: Melvin_48 Start: 31875, Stop: 31573, Start Num: 26
Candidate Starts for Melvin_48:
(4, 32145), (Start: 26 @31875 has 146 MA's), (77, 31743), (86, 31704), (89, 31656), (91, 31623),

Gene: Millski_45 Start: 31881, Stop: 31579, Start Num: 26
Candidate Starts for Millski_45:
(4, 32151), (Start: 26 @31881 has 146 MA's), (77, 31749), (86, 31710), (89, 31662), (91, 31629),

Gene: MinecraftSteve_50 Start: 30593, Stop: 30300, Start Num: 54
Candidate Starts for MinecraftSteve_50:
(Start: 54 @30593 has 20 MA's), (81, 30476), (89, 30383),

Gene: Miramae_45 Start: 32041, Stop: 31718, Start Num: 26
Candidate Starts for Miramae_45:
(Start: 26 @32041 has 146 MA's), (Start: 30 @32026 has 1 MA's), (69, 31933), (72, 31918), (77, 31888), (88, 31813), (91, 31768),

Gene: MissWhite_46 Start: 30606, Stop: 30256, Start Num: 44

Candidate Starts for MissWhite_46:

(Start: 44 @30606 has 1 MA's), (47, 30588), (85, 30426), (89, 30336), (90, 30315),

Gene: Morpher26_45 Start: 31874, Stop: 31551, Start Num: 26

Candidate Starts for Morpher26_45:

(Start: 26 @31874 has 146 MA's), (67, 31775), (69, 31766), (72, 31751), (77, 31721), (91, 31601),

Gene: Morrow_47 Start: 31886, Stop: 31584, Start Num: 26

Candidate Starts for Morrow_47:

(4, 32156), (Start: 26 @31886 has 146 MA's), (77, 31754), (86, 31715), (89, 31667), (91, 31634),

Gene: Mulciber_47 Start: 31256, Stop: 30909, Start Num: 37

Candidate Starts for Mulciber_47:

(Start: 37 @31256 has 27 MA's), (46, 31223), (52, 31202), (89, 30989), (91, 30956),

Gene: Munch_48 Start: 31705, Stop: 31358, Start Num: 37

Candidate Starts for Munch_48:

(Start: 37 @31705 has 27 MA's), (46, 31672), (52, 31651), (89, 31438), (91, 31405),

Gene: Mundrea_45 Start: 31861, Stop: 31538, Start Num: 26

Candidate Starts for Mundrea_45:

(Start: 26 @31861 has 146 MA's), (69, 31753), (72, 31738), (77, 31708), (88, 31633), (91, 31588),

Gene: Myxus_47 Start: 32109, Stop: 31783, Start Num: 36

Candidate Starts for Myxus_47:

(Start: 36 @32109 has 32 MA's), (43, 32085), (57, 32043), (92, 31803),

Gene: Naji_49 Start: 31906, Stop: 31496, Start Num: 26

Candidate Starts for Naji_49:

(6, 32113), (Start: 26 @31906 has 146 MA's), (63, 31786), (68, 31762), (70, 31756), (84, 31663), (89, 31576), (91, 31543),

Gene: Nebs_47 Start: 31880, Stop: 31578, Start Num: 26

Candidate Starts for Nebs_47:

(4, 32150), (Start: 26 @31880 has 146 MA's), (77, 31748), (86, 31709), (89, 31661), (91, 31628),

Gene: Nebulosus_49 Start: 30625, Stop: 30332, Start Num: 54

Candidate Starts for Nebulosus_49:

(Start: 54 @30625 has 20 MA's), (81, 30508), (89, 30415),

Gene: Nedarya_45 Start: 30054, Stop: 29713, Start Num: 41

Candidate Starts for Nedarya_45:

(Start: 41 @30054 has 1 MA's), (84, 29883), (89, 29796),

Gene: Nemo27_46 Start: 31879, Stop: 31577, Start Num: 26

Candidate Starts for Nemo27_46:

(Start: 26 @31879 has 146 MA's), (77, 31747), (86, 31708), (89, 31660), (91, 31627),

Gene: Noelle_46 Start: 32163, Stop: 31840, Start Num: 26

Candidate Starts for Noelle_46:

(Start: 26 @32163 has 146 MA's), (69, 32055), (77, 32010), (91, 31890),

Gene: NorthStar_45 Start: 31880, Stop: 31578, Start Num: 26
Candidate Starts for NorthStar_45:
(4, 32150), (Start: 26 @31880 has 146 MA's), (77, 31748), (86, 31709), (89, 31661), (91, 31628),

Gene: NotAPhaseMom_46 Start: 31884, Stop: 31582, Start Num: 26
Candidate Starts for NotAPhaseMom_46:
(Start: 26 @31884 has 146 MA's), (77, 31752), (86, 31713), (89, 31665), (91, 31632),

Gene: Nyxis_46 Start: 31770, Stop: 31468, Start Num: 26
Candidate Starts for Nyxis_46:
(4, 32040), (Start: 26 @31770 has 146 MA's), (77, 31638), (86, 31599), (89, 31551), (91, 31518),

Gene: OKCentral2016_44 Start: 31174, Stop: 30836, Start Num: 17
Candidate Starts for OKCentral2016_44:
(7, 31318), (11, 31267), (Start: 17 @31174 has 16 MA's), (49, 31114), (75, 31024), (77, 31009), (88, 30931),

Gene: OKaNui_46 Start: 31930, Stop: 31628, Start Num: 26
Candidate Starts for OKaNui_46:
(4, 32200), (Start: 26 @31930 has 146 MA's), (77, 31798), (86, 31759), (89, 31711), (91, 31678),

Gene: Obama12_47 Start: 32304, Stop: 32002, Start Num: 26
Candidate Starts for Obama12_47:
(4, 32574), (Start: 26 @32304 has 146 MA's), (77, 32172), (86, 32133), (91, 32052),

Gene: Odin_46 Start: 30872, Stop: 30465, Start Num: 23
Candidate Starts for Odin_46:
(Start: 23 @30872 has 8 MA's), (57, 30773), (89, 30545), (91, 30512),

Gene: Ohfah_47 Start: 31880, Stop: 31578, Start Num: 26
Candidate Starts for Ohfah_47:
(4, 32150), (Start: 26 @31880 has 146 MA's), (77, 31748), (86, 31709), (89, 31661), (91, 31628),

Gene: Onglai_45 Start: 30450, Stop: 30124, Start Num: 36
Candidate Starts for Onglai_45:
(Start: 36 @30450 has 32 MA's), (43, 30426), (57, 30384), (92, 30144),

Gene: Oofda_50 Start: 30484, Stop: 30191, Start Num: 54
Candidate Starts for Oofda_50:
(Start: 54 @30484 has 20 MA's), (81, 30367), (89, 30274),

Gene: Orange_47 Start: 31254, Stop: 30907, Start Num: 37
Candidate Starts for Orange_47:
(Start: 37 @31254 has 27 MA's), (46, 31221), (52, 31200), (89, 30987), (91, 30954),

Gene: PackMan_46 Start: 32109, Stop: 31783, Start Num: 36
Candidate Starts for PackMan_46:
(Start: 36 @32109 has 32 MA's), (43, 32085), (57, 32043), (92, 31803),

Gene: PainterBoy_48 Start: 31801, Stop: 31439, Start Num: 32
Candidate Starts for PainterBoy_48:
(Start: 32 @31801 has 3 MA's), (39, 31777), (89, 31519),

Gene: Palestino_45 Start: 31880, Stop: 31578, Start Num: 26
Candidate Starts for Palestino_45:
(4, 32150), (Start: 26 @31880 has 146 MA's), (77, 31748), (86, 31709), (89, 31661), (91, 31628),

Gene: PeaceMeal1_43 Start: 30752, Stop: 30396, Start Num: 17
Candidate Starts for PeaceMeal1_43:
(7, 30896), (Start: 17 @30752 has 16 MA's), (77, 30569), (88, 30491),

Gene: Peaches_46 Start: 31879, Stop: 31577, Start Num: 26
Candidate Starts for Peaches_46:
(4, 32149), (Start: 26 @31879 has 146 MA's), (77, 31747), (86, 31708), (89, 31660), (91, 31627),

Gene: Perplexer_45 Start: 31850, Stop: 31527, Start Num: 26
Candidate Starts for Perplexer_45:
(Start: 26 @31850 has 146 MA's), (67, 31751), (69, 31742), (72, 31727), (77, 31697), (91, 31577),

Gene: PeterPeter_46 Start: 31877, Stop: 31575, Start Num: 26
Candidate Starts for PeterPeter_46:
(4, 32147), (Start: 26 @31877 has 146 MA's), (77, 31745), (86, 31706), (89, 31658), (91, 31625),

Gene: Petersenfast_46 Start: 31261, Stop: 30914, Start Num: 37
Candidate Starts for Petersenfast_46:
(Start: 37 @31261 has 27 MA's), (46, 31228), (52, 31207), (89, 30994), (91, 30961),

Gene: PetiteSangsue_45 Start: 31853, Stop: 31530, Start Num: 26
Candidate Starts for PetiteSangsue_45:
(Start: 26 @31853 has 146 MA's), (67, 31754), (69, 31745), (72, 31730), (77, 31700), (91, 31580),

Gene: Ph8s_49 Start: 31506, Stop: 31078, Start Num: 23
Candidate Starts for Ph8s_49:
(15, 31542), (Start: 23 @31506 has 8 MA's), (89, 31158), (91, 31125),

Gene: Phacado_46 Start: 31879, Stop: 31577, Start Num: 26
Candidate Starts for Phacado_46:
(Start: 26 @31879 has 146 MA's), (77, 31747), (86, 31708), (89, 31660), (91, 31627),

Gene: Phaeder_47 Start: 32109, Stop: 31783, Start Num: 36
Candidate Starts for Phaeder_47:
(Start: 36 @32109 has 32 MA's), (43, 32085), (57, 32043), (92, 31803),

Gene: Pharaoh_41 Start: 31682, Stop: 31311, Start Num: 37
Candidate Starts for Pharaoh_41:
(1, 32006), (Start: 37 @31682 has 27 MA's), (57, 31619), (77, 31523), (89, 31391),

Gene: Phelipe_47 Start: 31880, Stop: 31578, Start Num: 26
Candidate Starts for Phelipe_47:
(4, 32150), (Start: 26 @31880 has 146 MA's), (77, 31748), (86, 31709), (89, 31661), (91, 31628),

Gene: Phighter1804_46 Start: 31943, Stop: 31620, Start Num: 26
Candidate Starts for Phighter1804_46:
(Start: 26 @31943 has 146 MA's), (Start: 30 @31928 has 1 MA's), (77, 31790), (86, 31751), (89, 31703), (91, 31670),

Gene: Phlei_36 Start: 31613, Stop: 31308, Start Num: 59
Candidate Starts for Phlei_36:
(50, 31628), (59, 31613), (73, 31559), (76, 31541), (82, 31487), (93, 31319),

Gene: Phonnegut_47 Start: 32158, Stop: 31832, Start Num: 36
Candidate Starts for Phonnegut_47:
(Start: 36 @32158 has 32 MA's), (43, 32134), (57, 32092), (92, 31852),

Gene: Phontbonne_46 Start: 31771, Stop: 31469, Start Num: 26
Candidate Starts for Phontbonne_46:
(4, 32041), (Start: 26 @31771 has 146 MA's), (77, 31639), (86, 31600), (89, 31552), (91, 31519),

Gene: Pioneer_47 Start: 32158, Stop: 31832, Start Num: 36
Candidate Starts for Pioneer_47:
(Start: 36 @32158 has 32 MA's), (43, 32134), (57, 32092), (92, 31852),

Gene: Pipcraft_44 Start: 31880, Stop: 31578, Start Num: 26
Candidate Starts for Pipcraft_44:
(4, 32150), (Start: 26 @31880 has 146 MA's), (77, 31748), (86, 31709), (89, 31661), (91, 31628),

Gene: Polymorphads_47 Start: 31873, Stop: 31571, Start Num: 26
Candidate Starts for Polymorphads_47:
(4, 32143), (Start: 26 @31873 has 146 MA's), (77, 31741), (86, 31702), (89, 31654), (91, 31621),

Gene: Pomar16_49 Start: 31947, Stop: 31537, Start Num: 26
Candidate Starts for Pomar16_49:
(2, 32274), (3, 32262), (Start: 26 @31947 has 146 MA's), (63, 31827), (68, 31803), (70, 31797), (84, 31704), (89, 31617), (91, 31584),

Gene: Poompha_44 Start: 30750, Stop: 30394, Start Num: 17
Candidate Starts for Poompha_44:
(7, 30894), (Start: 17 @30750 has 16 MA's), (77, 30567), (88, 30489),

Gene: Priya_47 Start: 32176, Stop: 31850, Start Num: 36
Candidate Starts for Priya_47:
(Start: 36 @32176 has 32 MA's), (43, 32152), (57, 32110), (92, 31870),

Gene: Pumbaa_46 Start: 31825, Stop: 31523, Start Num: 26
Candidate Starts for Pumbaa_46:
(4, 32095), (Start: 26 @31825 has 146 MA's), (77, 31693), (86, 31654), (89, 31606), (91, 31573),

Gene: Qobbit_47 Start: 32138, Stop: 31812, Start Num: 36
Candidate Starts for Qobbit_47:
(Start: 36 @32138 has 32 MA's), (43, 32114), (57, 32072), (92, 31832),

Gene: Quokka_45 Start: 31085, Stop: 30678, Start Num: 23
Candidate Starts for Quokka_45:
(Start: 23 @31085 has 8 MA's), (33, 31049), (62, 30965), (89, 30758), (91, 30725),

Gene: Rahalelujah_46 Start: 31411, Stop: 31040, Start Num: 37
Candidate Starts for Rahalelujah_46:
(10, 31597), (12, 31546), (14, 31522), (Start: 37 @31411 has 27 MA's), (55, 31351), (57, 31348), (92, 31060),

Gene: ReMo_49 Start: 30626, Stop: 30333, Start Num: 54

Candidate Starts for ReMo_49:

(Start: 54 @30626 has 20 MA's), (81, 30509), (89, 30416),

Gene: Rebeuca_45 Start: 31840, Stop: 31502, Start Num: 17

Candidate Starts for Rebeuca_45:

(7, 31984), (11, 31933), (Start: 17 @31840 has 16 MA's), (75, 31690), (77, 31675), (88, 31597),

Gene: Refuge_46 Start: 33330, Stop: 32986, Start Num: 35

Candidate Starts for Refuge_46:

(28, 33342), (Start: 35 @33330 has 3 MA's), (47, 33288), (49, 33285), (55, 33267), (76, 33213), (77, 33201), (89, 33066), (92, 33006),

Gene: Relief_45 Start: 31877, Stop: 31575, Start Num: 26

Candidate Starts for Relief_45:

(4, 32147), (Start: 26 @31877 has 146 MA's), (77, 31745), (86, 31706), (89, 31658), (91, 31625),

Gene: Remus_49 Start: 30309, Stop: 30016, Start Num: 54

Candidate Starts for Remus_49:

(Start: 54 @30309 has 20 MA's), (81, 30192), (89, 30099),

Gene: RhynO_46 Start: 31639, Stop: 31301, Start Num: 17

Candidate Starts for RhynO_46:

(Start: 17 @31639 has 16 MA's), (49, 31579), (77, 31474), (88, 31396),

Gene: Romney_46 Start: 31877, Stop: 31575, Start Num: 26

Candidate Starts for Romney_46:

(4, 32147), (Start: 26 @31877 has 146 MA's), (48, 31835), (77, 31745), (86, 31706), (89, 31658), (91, 31625),

Gene: Roosevelt_45 Start: 31882, Stop: 31580, Start Num: 26

Candidate Starts for Roosevelt_45:

(4, 32152), (Start: 26 @31882 has 146 MA's), (77, 31750), (86, 31711), (89, 31663), (91, 31630),

Gene: Rosa24_45 Start: 31911, Stop: 31609, Start Num: 26

Candidate Starts for Rosa24_45:

(4, 32181), (Start: 26 @31911 has 146 MA's), (48, 31869), (77, 31779), (86, 31740), (89, 31692), (91, 31659),

Gene: Rosalind_48 Start: 30512, Stop: 30219, Start Num: 54

Candidate Starts for Rosalind_48:

(Start: 54 @30512 has 20 MA's), (81, 30395), (89, 30302),

Gene: Rowdy_49 Start: 31547, Stop: 31209, Start Num: 17

Candidate Starts for Rowdy_49:

(Start: 17 @31547 has 16 MA's), (49, 31487), (77, 31382), (88, 31304),

Gene: Ruin_46 Start: 31873, Stop: 31571, Start Num: 26

Candidate Starts for Ruin_46:

(4, 32143), (Start: 26 @31873 has 146 MA's), (77, 31741), (86, 31702), (89, 31654), (91, 31621),

Gene: RyeScarlet_48 Start: 32133, Stop: 31807, Start Num: 36

Candidate Starts for RyeScarlet_48:

(Start: 36 @32133 has 32 MA's), (43, 32109), (57, 32067), (92, 31827),

Gene: Sabertooth_46 Start: 31882, Stop: 31580, Start Num: 26

Candidate Starts for Sabertooth_46:

(4, 32152), (Start: 26 @31882 has 146 MA's), (77, 31750), (86, 31711), (89, 31663), (91, 31630),

Gene: Sachima_44 Start: 32043, Stop: 31717, Start Num: 36

Candidate Starts for Sachima_44:

(Start: 36 @32043 has 32 MA's), (43, 32019), (57, 31977), (92, 31737),

Gene: Salz_46 Start: 31232, Stop: 30885, Start Num: 37

Candidate Starts for Salz_46:

(Start: 37 @31232 has 27 MA's), (46, 31199), (52, 31178), (89, 30965), (91, 30932),

Gene: Scamp_46 Start: 31882, Stop: 31580, Start Num: 26

Candidate Starts for Scamp_46:

(4, 32152), (Start: 26 @31882 has 146 MA's), (77, 31750), (86, 31711), (89, 31663), (91, 31630),

Gene: Scherzo_47 Start: 32347, Stop: 32021, Start Num: 36

Candidate Starts for Scherzo_47:

(Start: 36 @32347 has 32 MA's), (43, 32323), (57, 32281), (92, 32041),

Gene: Serenity_47 Start: 31249, Stop: 30842, Start Num: 23

Candidate Starts for Serenity_47:

(Start: 23 @31249 has 8 MA's), (76, 31066), (82, 31021), (89, 30922), (91, 30889),

Gene: Severus_43 Start: 30750, Stop: 30394, Start Num: 17

Candidate Starts for Severus_43:

(7, 30894), (Start: 17 @30750 has 16 MA's), (77, 30567), (88, 30489),

Gene: Shaka_46 Start: 31877, Stop: 31575, Start Num: 26

Candidate Starts for Shaka_46:

(4, 32147), (Start: 26 @31877 has 146 MA's), (77, 31745), (86, 31706), (89, 31658), (91, 31625),

Gene: Sham4_47 Start: 31260, Stop: 30913, Start Num: 37

Candidate Starts for Sham4_47:

(Start: 37 @31260 has 27 MA's), (46, 31227), (52, 31206), (89, 30993), (91, 30960),

Gene: Shapes_49 Start: 31547, Stop: 31209, Start Num: 17

Candidate Starts for Shapes_49:

(Start: 17 @31547 has 16 MA's), (49, 31487), (77, 31382), (88, 31304),

Gene: ShayRa_51 Start: 30830, Stop: 30537, Start Num: 54

Candidate Starts for ShayRa_51:

(Start: 54 @30830 has 20 MA's), (81, 30713), (89, 30620),

Gene: SheaKeira_46 Start: 31684, Stop: 31340, Start Num: 37

Candidate Starts for SheaKeira_46:

(Start: 37 @31684 has 27 MA's), (Start: 41 @31669 has 1 MA's), (43, 31663), (57, 31621), (67, 31579), (77, 31546), (92, 31360), (93, 31351),

Gene: SheldonCooper_48 Start: 32303, Stop: 32001, Start Num: 26

Candidate Starts for SheldonCooper_48:

(4, 32573), (Start: 26 @32303 has 146 MA's), (77, 32171), (86, 32132), (91, 32051),

Gene: Shygu2_45 Start: 31853, Stop: 31530, Start Num: 26

Candidate Starts for Shygu2_45:

(Start: 26 @31853 has 146 MA's), (77, 31700), (86, 31661), (91, 31580),

Gene: Skipitt_45 Start: 31874, Stop: 31572, Start Num: 26

Candidate Starts for Skipitt_45:

(4, 32144), (Start: 26 @31874 has 146 MA's), (77, 31742), (86, 31703), (89, 31655), (91, 31622),

Gene: Snape_47 Start: 31258, Stop: 30911, Start Num: 37

Candidate Starts for Snape_47:

(Start: 37 @31258 has 27 MA's), (46, 31225), (52, 31204), (89, 30991), (91, 30958),

Gene: Soups_50 Start: 30829, Stop: 30536, Start Num: 54

Candidate Starts for Soups_50:

(Start: 54 @30829 has 20 MA's), (81, 30712), (89, 30619),

Gene: Sparxx_47 Start: 31875, Stop: 31573, Start Num: 26

Candidate Starts for Sparxx_47:

(4, 32145), (Start: 26 @31875 has 146 MA's), (77, 31743), (86, 31704), (89, 31656), (91, 31623),

Gene: Spino_45 Start: 31880, Stop: 31578, Start Num: 26

Candidate Starts for Spino_45:

(4, 32150), (Start: 26 @31880 has 146 MA's), (77, 31748), (86, 31709), (89, 31661), (91, 31628),

Gene: Spouty_47 Start: 32175, Stop: 31849, Start Num: 36

Candidate Starts for Spouty_47:

(Start: 36 @32175 has 32 MA's), (43, 32151), (57, 32109), (92, 31869),

Gene: StarStuff_49 Start: 31909, Stop: 31499, Start Num: 26

Candidate Starts for StarStuff_49:

(2, 32236), (3, 32224), (Start: 26 @31909 has 146 MA's), (63, 31789), (68, 31765), (70, 31759), (84, 31666), (89, 31579), (91, 31546),

Gene: Stasia_45 Start: 31752, Stop: 31450, Start Num: 26

Candidate Starts for Stasia_45:

(Start: 26 @31752 has 146 MA's), (89, 31533),

Gene: Steamy_43 Start: 31608, Stop: 31282, Start Num: 45

Candidate Starts for Steamy_43:

(14, 31740), (21, 31668), (Start: 42 @31614 has 1 MA's), (Start: 45 @31608 has 1 MA's), (74, 31515), (76, 31509), (77, 31497), (89, 31362),

Gene: Stink_46 Start: 32321, Stop: 31998, Start Num: 26

Candidate Starts for Stink_46:

(Start: 26 @32321 has 146 MA's), (Start: 30 @32306 has 1 MA's), (69, 32213), (72, 32198), (77, 32168), (88, 32093), (91, 32048),

Gene: Strosahl_49 Start: 30309, Stop: 30016, Start Num: 54

Candidate Starts for Strosahl_49:

(Start: 54 @30309 has 20 MA's), (81, 30192), (89, 30099),

Gene: Sunhee_50 Start: 32074, Stop: 31730, Start Num: 38
Candidate Starts for Sunhee_50:
(38, 32074), (55, 32020), (66, 31978), (78, 31936), (89, 31810), (92, 31750),

Gene: Superchunk_46 Start: 30723, Stop: 30316, Start Num: 23
Candidate Starts for Superchunk_46:
(Start: 23 @30723 has 8 MA's), (57, 30624), (80, 30510), (89, 30396), (91, 30363),

Gene: Switzerland_49 Start: 30692, Stop: 30399, Start Num: 54
Candidate Starts for Switzerland_49:
(Start: 54 @30692 has 20 MA's), (81, 30575), (89, 30482),

Gene: Taquarus_46 Start: 31883, Stop: 31581, Start Num: 26
Candidate Starts for Taquarus_46:
(4, 32153), (Start: 26 @31883 has 146 MA's), (77, 31751), (86, 31712), (89, 31664), (91, 31631),

Gene: Thanksgivukkah_45 Start: 31878, Stop: 31576, Start Num: 26
Candidate Starts for Thanksgivukkah_45:
(4, 32148), (Start: 26 @31878 has 146 MA's), (77, 31746), (86, 31707), (89, 31659), (91, 31626),

Gene: Timothy_47 Start: 31235, Stop: 30888, Start Num: 37
Candidate Starts for Timothy_47:
(Start: 37 @31235 has 27 MA's), (46, 31202), (52, 31181), (89, 30968), (91, 30935),

Gene: TinaFeyge_46 Start: 31875, Stop: 31573, Start Num: 26
Candidate Starts for TinaFeyge_46:
(4, 32145), (Start: 26 @31875 has 146 MA's), (77, 31743), (86, 31704), (89, 31656), (91, 31623),

Gene: TinyTimmy_47 Start: 31278, Stop: 30931, Start Num: 37
Candidate Starts for TinyTimmy_47:
(Start: 37 @31278 has 27 MA's), (46, 31245), (52, 31224), (89, 31011), (91, 30978),

Gene: Tinybot_45 Start: 31907, Stop: 31605, Start Num: 26
Candidate Starts for Tinybot_45:
(4, 32177), (Start: 26 @31907 has 146 MA's), (77, 31775), (86, 31736), (89, 31688), (91, 31655),

Gene: TipsytheTRex_44 Start: 31322, Stop: 30915, Start Num: 23
Candidate Starts for TipsytheTRex_44:
(Start: 23 @31322 has 8 MA's), (76, 31139), (89, 30995), (91, 30962),

Gene: TiroTheta9_46 Start: 31874, Stop: 31572, Start Num: 26
Candidate Starts for TiroTheta9_46:
(4, 32144), (Start: 26 @31874 has 146 MA's), (77, 31742), (86, 31703), (89, 31655), (91, 31622),

Gene: Toaka_46 Start: 31676, Stop: 31308, Start Num: 36
Candidate Starts for Toaka_46:
(Start: 36 @31676 has 32 MA's), (43, 31652), (57, 31610), (92, 31328), (93, 31319),

Gene: Tomathan_49 Start: 31906, Stop: 31496, Start Num: 26
Candidate Starts for Tomathan_49:
(2, 32233), (3, 32221), (Start: 26 @31906 has 146 MA's), (63, 31786), (68, 31762), (70, 31756), (84, 31663), (89, 31576), (91, 31543),

Gene: Topanga_43 Start: 31489, Stop: 31151, Start Num: 17

Candidate Starts for Topanga_43:

(7, 31633), (11, 31582), (Start: 17 @31489 has 16 MA's), (75, 31339), (77, 31324), (88, 31246),

Gene: Travvers_49 Start: 31906, Stop: 31496, Start Num: 26

Candidate Starts for Travvers_49:

(2, 32233), (3, 32221), (Start: 26 @31906 has 146 MA's), (63, 31786), (68, 31762), (70, 31756), (84, 31663), (89, 31576), (91, 31543),

Gene: Trike_43 Start: 30758, Stop: 30402, Start Num: 17

Candidate Starts for Trike_43:

(7, 30902), (Start: 17 @30758 has 16 MA's), (77, 30575), (88, 30497),

Gene: TroyPia_47 Start: 31878, Stop: 31576, Start Num: 26

Candidate Starts for TroyPia_47:

(4, 32148), (Start: 26 @31878 has 146 MA's), (77, 31746), (86, 31707), (89, 31659), (91, 31626),

Gene: Tubs_47 Start: 32109, Stop: 31783, Start Num: 36

Candidate Starts for Tubs_47:

(Start: 36 @32109 has 32 MA's), (43, 32085), (57, 32043), (92, 31803),

Gene: Twister_43 Start: 31400, Stop: 31062, Start Num: 17

Candidate Starts for Twister_43:

(7, 31544), (11, 31493), (Start: 17 @31400 has 16 MA's), (75, 31250), (77, 31235), (88, 31157),

Gene: TygerBlood_46 Start: 31880, Stop: 31578, Start Num: 26

Candidate Starts for TygerBlood_46:

(4, 32150), (Start: 26 @31880 has 146 MA's), (77, 31748), (86, 31709), (89, 31661), (91, 31628),

Gene: Ugenie5_44 Start: 32346, Stop: 32020, Start Num: 36

Candidate Starts for Ugenie5_44:

(Start: 36 @32346 has 32 MA's), (43, 32322), (57, 32280), (92, 32040),

Gene: Ulysses_45 Start: 31557, Stop: 31255, Start Num: 26

Candidate Starts for Ulysses_45:

(4, 31827), (Start: 26 @31557 has 146 MA's), (77, 31425), (86, 31386), (89, 31338), (91, 31305),

Gene: Vanisoa_46 Start: 32705, Stop: 32358, Start Num: 36

Candidate Starts for Vanisoa_46:

(10, 32888), (12, 32837), (14, 32813), (Start: 36 @32705 has 32 MA's), (43, 32681), (57, 32639), (64, 32609), (92, 32378),

Gene: Waits_49 Start: 30481, Stop: 30188, Start Num: 54

Candidate Starts for Waits_49:

(Start: 54 @30481 has 20 MA's), (81, 30364), (89, 30271),

Gene: WalterMcMickey_43 Start: 31400, Stop: 31062, Start Num: 17

Candidate Starts for WalterMcMickey_43:

(7, 31544), (11, 31493), (Start: 17 @31400 has 16 MA's), (75, 31250), (77, 31235), (88, 31157),

Gene: Wander_46 Start: 31877, Stop: 31575, Start Num: 26

Candidate Starts for Wander_46:

(Start: 26 @31877 has 146 MA's), (77, 31745), (86, 31706), (89, 31658), (91, 31625),

Gene: Wilbur_46 Start: 31877, Stop: 31575, Start Num: 26

Candidate Starts for Wilbur_46:

(4, 32147), (Start: 26 @31877 has 146 MA's), (48, 31835), (77, 31745), (86, 31706), (89, 31658), (91, 31625),

Gene: Wile_45 Start: 31884, Stop: 31561, Start Num: 26

Candidate Starts for Wile_45:

(Start: 26 @31884 has 146 MA's), (67, 31785), (69, 31776), (72, 31761), (77, 31731), (91, 31611),

Gene: Wizard007_46 Start: 31885, Stop: 31583, Start Num: 26

Candidate Starts for Wizard007_46:

(4, 32155), (Start: 26 @31885 has 146 MA's), (77, 31753), (86, 31714), (89, 31666), (91, 31633),

Gene: Xena_44 Start: 31850, Stop: 31527, Start Num: 26

Candidate Starts for Xena_44:

(Start: 26 @31850 has 146 MA's), (67, 31751), (69, 31742), (72, 31727), (77, 31697), (91, 31577),

Gene: XianYue_46 Start: 31886, Stop: 31548, Start Num: 40

Candidate Starts for XianYue_46:

(Start: 40 @31886 has 1 MA's), (84, 31712), (91, 31595),

Gene: Yecey3_48 Start: 31582, Stop: 31238, Start Num: 30

Candidate Starts for Yecey3_48:

(Start: 30 @31582 has 1 MA's), (43, 31561), (57, 31519), (67, 31477), (77, 31444), (92, 31258),

Gene: YoSam321_46 Start: 31874, Stop: 31572, Start Num: 26

Candidate Starts for YoSam321_46:

(4, 32144), (Start: 26 @31874 has 146 MA's), (77, 31742), (86, 31703), (89, 31655), (91, 31622),

Gene: Zimmer_44 Start: 32823, Stop: 32467, Start Num: 35

Candidate Starts for Zimmer_44:

(Start: 35 @32823 has 3 MA's), (47, 32781), (76, 32706), (77, 32694), (79, 32676), (89, 32547), (92, 32487),