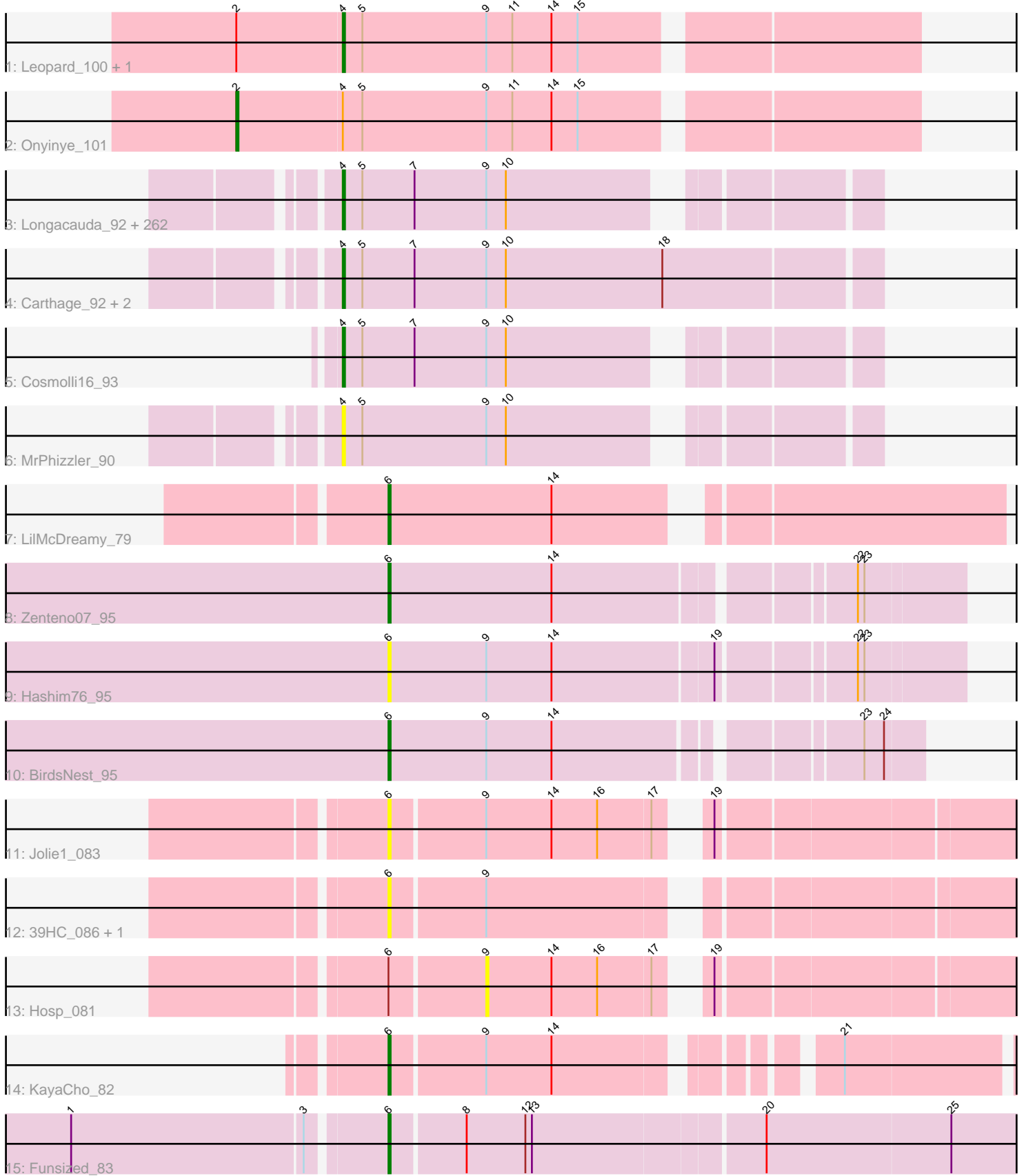


Pham 196245



Note: Tracks are now grouped by subcluster and scaled. Switching in subcluster is indicated by changes in track color. Track scale is now set by default to display the region 30 bp upstream of start 1 to 30 bp downstream of the last possible start. If this default region is judged to be packed too tightly with annotated starts, the track will be further scaled to only show that region of the ORF with annotated starts. This action will be indicated by adding "Zoomed" to the title. For starts, yellow indicates the location of called starts comprised solely of Glimmer/GeneMark auto-annotations, green indicates the location of called starts with at least 1 manual gene annotation.

Pham 196245 Report

This analysis was run 12/09/24 on database version 580.

Pham number 196245 has 281 members, 15 are drafts.

Phages represented in each track:

- Track 1 : Leopard_100, Aikoy_102
- Track 2 : Onyinye_101
- Track 3 : Longacauda_92, Virgeve_89, Simielle_90, GeneCoco_91, Mcshane_90, CampRoach_91, Craff_92, Phipps_89, LeeLot_89, BatteryCK_89, Serendipity_90, SDcharge11_90, Sigman_90, Chunky_90, Pherdinand_92, Riggan_92, Struggle_91, Lulumae_86, BlackStallion_90, QueenBeane_91, AltPhacts_88, Piglet_0090, Thunderbird_91, Antonia_90, Labeouficaum_91, Olak_90, Phergie_91, UAch1_92, Eugenia_93, Zaider_92, Lego3393_89, Podrick_89, Oline_90, Harvey_88, Placalicious_89, SilverBell_92, Wallhey_92, Hocus_89, JacAttac_91, Hartsy_89, Orfeu_90, Pinkman_90, Basato_90, Lumine_92, Held_89, Phunky_88, Quisquilliae_93, Anderson_92, Dingo_88, Etaye_90, TallGrassMM_90, Doddsville_88, Inchworm_92, Bishoperium_91, Boehler_89, FluffyNinja_92, Numberten_90, PhrodoBaggins_93, Gwilliam_91, Roliet_88, Banjo_87, Mutante_92, Kikipoo_93, Chah_93, Badfish_91, Chorkpop_92, Hetaeria_91, HSavage_89, Inverness_89, Cannibal_91, Frankicide_89, Kwadwo_90, Slatt_91, Adriana_91, Orwigg_91, Hertubise_90, Morgushi_88, Gareth_91, KlimbOn_90, TomBombadil_91, Fozzie_88, Matalotodo_89, Manad_90, Fringe_95, Chaelin_92, Serpentine_0092, DirtJuice_90, CheetO_88, Soto_88, Surely_91, Nicole21_92, ShiVal_89, Vista_90, Childish_91, Daffy_90, Altwerkus_88, Olive_87, Roscoe_90, Burr_91, Kwksand96_92, Beaglebox_87, KLucky39_89, LuckyMarjie_88, Vivaldi_91, Plmatters_88, Chute_91, Bluephacebaby_90, Legolas_92, Thora_89, Dione_89, Colbert_89, OSmaximus_92, MitKao_91, EmpTee_90, LemonSlice_91, Haimas_88, Phareon_88, Horchata_86, Oosterbaan_91, Cobra_91, Jillium_92, Sheila_85, Spartan300_90, Cher_91, Pipsqueak_88, Tooj_88, DonSanchon_86, Squid_90, Samaymay_91, CamL_91, Buckeye_90, Morty_91, Scoot17C_91, MiniBoss_87, MRabcd_91, Nacho_0093, Haleema_90, Scrick_90, ABU_89, MelsMeow_90, Kloppinator_91, Jiminy_91, DaddyDaniels_94, Kimbrough_92, HighStump_92, FriarPreacher_88, Melc17_88, Selr12_92, LostAndPhound_90, Virapocalypse_92, Ashraf_92, Sophia_89, Yoshand_92, Mulan_90, BlueHusk_92, Usavi_91, JakeO_92, Crownjwl_88, Coletti_93, Magic8_90, Eremos_89, Mikota_86, Swiphy_95, Daka_93, DoesntMatter_88, Vaticameos_88, RedMaple_90, Zelda_91, Mosaic_88, OliverWalter_90, Freya_87, Dice_90, UncleHowie_87, Soile_92, Apizium_89, DuchessDung_88, Mesh1_92, Lasso_90, PG1_89, Grand2040_89, LasagnaCat_92, Durga_93, DelRivs_89, Kahve_91, Waterdiva_92, Duggie_91, Mecca_91, Prickles_92, Mana_88, PinheadLarry_90, Mag7_89, KingTut_82, Maru_91, Keitherie_94, Megamind20_91, Iridoclysis_90, Gyarad_0090, Megatron_92, Orion_89, Skippy_91, PhenghisKhan_91, Toni_90, AbsoluteMadLad_89, Dati_88,

PhatLouie_93, LeiMonet_93, Xavier_90, ImtiyazSitla_92, Roy17_88, Solosis_89, ProfessorX_89, Emiris_93, Andre_93, Pacifista_90, Charles1_92, MichaelPhcott_89, Potter_85, Schueller_90, Veritas_90, KingVeVeVe_89, Maskar_92, Trypo_91, Brilliant_94, Nyala_90, Valjean_89, PhatCats2014_90, Murdoc_87, Ricotta_91, CharlieGBrown_89, Timmi_89, Vortex_89, PhrankReynolds_89, Puhltonio_87, Newman_87, Fang_92, JDog_90, Tomlarah_91, IsaacEli_93, Pops_88, Swish_92, Phleuron_88, TyrionL_91, Omniscient_92, Giraffe_91, Lulwa_88, HenryJackson_91, Zonia_91, Derpp_90, Squiggle_90, Kailash_89, True_89, Weher20_88, Telesworld_89, ThreeOh3D2_92, FugateOSU_91, Windsor_91, YouGoGlencoco_91, Gophee_90, Katniss_93, Hamish_88, Phamished_90, SassyCat97_89, JangoPhett_89

- Track 4 : Carthage_92, Robyn_93, Vaishali24_92
- Track 5 : Cosmolli16_93
- Track 6 : MrPhizzler_90
- Track 7 : LilMcDreamy_79
- Track 8 : Zenteno07_95
- Track 9 : Hashim76_95
- Track 10 : BirdsNest_95
- Track 11 : Jolie1_083
- Track 12 : 39HC_086, 40BC_086
- Track 13 : Hosp_081
- Track 14 : KayaCho_82
- Track 15 : Funsized_83

Summary of Final Annotations (See graph section above for start numbers):

The start number called the most often in the published annotations is 4, it was called in 260 of the 266 non-draft genes in the pham.

Genes that call this "Most Annotated" start:

- ABU_89, AbsoluteMadLad_89, Adriana_91, Aikoy_102, AltPhacts_88, Altwerkus_88, Anderson_92, Andre_93, Antonia_90, Apizium_89, Ashraf_92, Badfish_91, Banjo_87, Basato_90, BatteryCK_89, Beaglebox_87, Bishoperium_91, BlackStallion_90, BlueHusk_92, Bluephacebaby_90, Boehler_89, Brilliant_94, Buckeye_90, Burr_91, CamL_91, CampRoach_91, Cannibal_91, Carthage_92, Chaelin_92, Chah_93, Charles1_92, CharlieGBrown_89, CheetO_88, Cher_91, Childish_91, Chorkpop_92, Chunky_90, Chute_91, Cobra_91, Colbert_89, Coletti_93, Cosmolli16_93, Craff_92, Crownjwl_88, DaddyDaniels_94, Daffy_90, Daka_93, Dati_88, DelRivs_89, Derpp_90, Dice_90, Dingo_88, Dione_89, DirtJuice_90, Doddsville_88, DoesntMatter_88, DonSanchon_86, DuchessDung_88, Duggie_91, Durga_93, Emiris_93, EmpTee_90, Eremos_89, Etaye_90, Eugenia_93, Fang_92, FluffyNinja_92, Fozzie_88, Frankicide_89, Freya_87, FriarPreacher_88, Fringe_95, FugateOSU_91, Gareth_91, GeneCoco_91, Giraffe_91, Gophee_90, Grand2040_89, Gwilliam_91, Gyarad_0090, HSavage_89, Haimas_88, Haleema_90, Hamish_88, Hartsy_89, Harvey_88, Held_89, HenryJackson_91, Hertubise_90, Hetaeria_91, HighStump_92, Hocus_89, Horchata_86, ImtiyazSitla_92, Inchworm_92, Inverness_89, Iridoclysis_90, IsaacEli_93, JDog_90, JacAttac_91, JakeO_92, JangoPhett_89, Jillium_92, Jiminy_91, KLucky39_89, Kahve_91, Kailash_89, Katniss_93, Keitherie_94, Kikipoo_93, Kimbrough_92, KingTut_82, KingVeVeVe_89, KlimbOn_90, Kloppinator_91, Kwadwo_90, Kwksand96_92,

Labeouficaum_91, LasagnaCat_92, Lasso_90, LeeLot_89, Lego3393_89, Legolas_92, LeiMonet_93, LemonSlice_91, Leopard_100, Longacauda_92, LostAndPhound_90, LuckyMarjie_88, Lulumae_86, Lulwa_88, Lumine_92, MRabcd_91, Mag7_89, Magic8_90, Mana_88, Manad_90, Maru_91, Maskar_92, Matalotodo_89, Mcshane_90, Mecca_91, Megamind20_91, Megatron_92, Melc17_88, MelsMeow_90, Mesh1_92, MichaelPhcott_89, Mikota_86, MiniBoss_87, MitKao_91, Morgushi_88, Morty_91, Mosaic_88, MrPhizzler_90, Mulan_90, Murdoc_87, Mutante_92, Nacho_0093, Newman_87, Nicole21_92, Numberten_90, Nyala_90, OSmaximus_92, Olak_90, Oline_90, Olive_87, OliverWalter_90, Omniscient_92, Oosterbaan_91, Orfeu_90, Orion_89, Orwigg_91, PG1_89, Pacifista_90, Phamished_90, Phareon_88, PhatCats2014_90, PhatLouie_93, PhenghisKhan_91, Pherdinand_92, Phergie_91, Phipps_89, Phleuron_88, PhrankReynolds_89, PhrodoBaggins_93, Phunky_88, Piglet_0090, PinheadLarry_90, Pinkman_90, Pipsqueak_88, Placalicious_89, Plmatters_88, Podrick_89, Pops_88, Potter_85, Prickles_92, ProfessorX_89, Puhltonio_87, QueenBeane_91, Quisquiliae_93, RedMaple_90, Ricotta_91, Riggan_92, Robyn_93, Roliet_88, Roscoe_90, Roy17_88, SDcharge11_90, Samaymay_91, SassyCat97_89, Schueller_90, Scoot17C_91, Scrick_90, Selr12_92, Serendipity_90, Serpentine_0092, Sheila_85, ShiVal_89, Sigman_90, SilverBell_92, Simielle_90, Skippy_91, Slatt_91, Soile_92, Solosis_89, Sophia_89, Soto_88, Spartan300_90, Squid_90, Squiggle_90, Struggle_91, Surely_91, Swiphy_95, Swish_92, TallGrassMM_90, Telesworld_89, Thora_89, ThreeOh3D2_92, Thunderbird_91, Timmi_89, TomBombadil_91, Tomlarah_91, Toni_90, Tooj_88, True_89, Trypo_91, TyrionL_91, UAch1_92, UncleHowie_87, Usavi_91, Vaishali24_92, Valjean_89, Vaticameos_88, Veritas_90, Virapocalypse_92, Virgeve_89, Vista_90, Vivaldi_91, Vortex_89, Wallhey_92, Waterdiva_92, Weher20_88, Windsor_91, Xavier_90, Yoshand_92, YouGoGlencoco_91, Zaider_92, Zelda_91, Zonia_91,

Genes that have the "Most Annotated" start but do not call it:

- Onyinye_101,

Genes that do not have the "Most Annotated" start:

- 39HC_086, 40BC_086, BirdsNest_95, Funsized_83, Hashim76_95, Hosp_081, Jolie1_083, KayaCho_82, LilMcDreamy_79, Zenteno07_95,

Summary by start number:

Start 2:

- Found in 3 of 281 (1.1%) of genes in pham
- Manual Annotations of this start: 1 of 266
- Called 33.3% of time when present
- Phage (with cluster) where this start called: Onyinye_101 (AE),

Start 4:

- Found in 271 of 281 (96.4%) of genes in pham
- Manual Annotations of this start: 260 of 266
- Called 99.6% of time when present
- Phage (with cluster) where this start called: ABU_89 (B1), AbsoluteMadLad_89 (B1), Adriana_91 (B1), Aikoy_102 (AE), AltPhacts_88 (B1), Altwerkus_88 (B1), Anderson_92 (B1), Andre_93 (B1), Antonia_90 (B1), Apizium_89 (B1), Ashraf_92 (B1), Badfish_91 (B1), Banjo_87 (B1), Basato_90 (B1), BatteryCK_89 (B1), Beaglebox_87 (B1), Bishoperium_91 (B1), BlackStallion_90 (B1), BlueHusk_92 (B1), Bluephacebaby_90 (B1), Boehler_89 (B1), Brilliant_94 (B1), Buckeye_90 (B1),

Burr_91 (B1), CamL_91 (B1), CampRoach_91 (B1), Cannibal_91 (B1), Carthage_92 (B1), Chaelin_92 (B1), Chah_93 (B1), Charles1_92 (B1), CharlieGBrown_89 (B1), CheetO_88 (B1), Cher_91 (B1), Childish_91 (B1), Chorkpop_92 (B1), Chunky_90 (B1), Chute_91 (B1), Cobra_91 (B1), Colbert_89 (B1), Coletti_93 (B1), Cosmolli16_93 (B1), Craff_92 (B1), Crownjwl_88 (B1), DaddyDaniels_94 (B1), Daffy_90 (B1), Daka_93 (B1), Dati_88 (B1), DelRivs_89 (B1), Derpp_90 (B1), Dice_90 (B1), Dingo_88 (B1), Dione_89 (B1), DirtJuice_90 (B1), Doddsville_88 (B1), DoesntMatter_88 (B1), DonSanchon_86 (B1), DuchessDung_88 (B1), Duggie_91 (B1), Durga_93 (B1), Emiris_93 (B1), EmpTee_90 (B1), Eremos_89 (B1), Etaye_90 (B1), Eugenia_93 (B1), Fang_92 (B1), FluffyNinja_92 (B1), Fozzie_88 (B1), Frankicide_89 (B1), Freya_87 (B1), FriarPreacher_88 (B1), Fringe_95 (B1), FugateOSU_91 (B1), Gareth_91 (B1), GeneCoco_91 (B1), Giraffe_91 (B1), Gophee_90 (B1), Grand2040_89 (B1), Gwilliam_91 (B1), Gyarad_0090 (B1), HSavage_89 (B1), Haimas_88 (B1), Haleema_90 (B1), Hamish_88 (B1), Hartsy_89 (B1), Harvey_88 (B1), Held_89 (B1), HenryJackson_91 (B1), Hertubise_90 (B1), Hetaeria_91 (B1), HighStump_92 (B1), Hocus_89 (B1), Horchata_86 (B1), ImtiyazSitla_92 (B1), Inchworm_92 (B1), Inverness_89 (B1), Iridoclysis_90 (B1), IsaacEli_93 (B1), JDog_90 (B1), JacAttac_91 (B1), JakeO_92 (B1), JangoPhett_89 (B1), Jillium_92 (B1), Jiminy_91 (B1), KLucky39_89 (B1), Kahve_91 (B1), Kailash_89 (B1), Katniss_93 (B1), Keitherie_94 (B1), Kikipoo_93 (B1), Kimbrough_92 (B1), KingTut_82 (B1), KingVeVeVe_89 (B1), KlimbOn_90 (B1), Kloppinator_91 (B1), Kwadwo_90 (B1), Kwksand96_92 (B1), Labeouficaum_91 (B1), LasagnaCat_92 (B1), Lasso_90 (B1), LeeLot_89 (B1), Lego3393_89 (B1), Legolas_92 (B1), LeiMonet_93 (B1), LemonSlice_91 (B1), Leopard_100 (AE), Longacauda_92 (B1), LostAndPhound_90 (B1), LuckyMarjie_88 (B1), Lulumae_86 (B1), Lulwa_88 (B1), Lumine_92 (B1), MRabcd_91 (B1), Mag7_89 (B1), Magic8_90 (B1), Mana_88 (B1), Manad_90 (B1), Maru_91 (B1), Maskar_92 (B1), Matalotodo_89 (B1), Mcshane_90 (B1), Mecca_91 (B1), Megamind20_91 (B1), Megatron_92 (B1), Melc17_88 (B1), MelsMeow_90 (B1), Mesh1_92 (B1), MichaelPhcott_89 (B1), Mikota_86 (B1), MiniBoss_87 (B1), MitKao_91 (B1), Morgushi_88 (B1), Morty_91 (B1), Mosaic_88 (B1), MrPhizzler_90 (B1), Mulan_90 (B1), Murdoc_87 (B1), Mutante_92 (B1), Nacho_0093 (B1), Newman_87 (B1), Nicole21_92 (B1), Numberten_90 (B1), Nyala_90 (B1), OSmaximus_92 (B1), Olak_90 (B1), Oline_90 (B1), Olive_87 (B1), OliverWalter_90 (B1), Omniscient_92 (B1), Oosterbaan_91 (B1), Orfeu_90 (B1), Orion_89 (B1), Orwigg_91 (B1), PG1_89 (B1), Pacifista_90 (B1), Phamished_90 (B1), Phareon_88 (B1), PhatCats2014_90 (B1), PhatLouie_93 (B1), PhenghisKhan_91 (B1), Pherdinand_92 (B1), Phergie_91 (B1), Phipps_89 (B1), Phleuron_88 (B1), PhrankReynolds_89 (B1), PhrodoBaggins_93 (B1), Phunky_88 (B1), Piglet_0090 (B1), PinheadLarry_90 (B1), Pinkman_90 (B1), Pipsqueak_88 (B1), Placalicious_89 (B1), Plmatters_88 (B1), Podrick_89 (B1), Pops_88 (B1), Potter_85 (B1), Prickles_92 (B1), ProfessorX_89 (B1), Puhltonio_87 (B1), QueenBeane_91 (B1), Quisquilliae_93 (B1), RedMaple_90 (B1), Ricotta_91 (B1), Riggan_92 (B1), Robyn_93 (B1), Roliet_88 (B1), Roscoe_90 (B1), Roy17_88 (B1), SDcharge11_90 (B1), Samaymay_91 (B1), SassyCat97_89 (B1), Schueller_90 (B1), Scoot17C_91 (B1), Scrick_90 (B1), Selr12_92 (B1), Serendipity_90 (B1), Serpentine_0092 (B1), Sheila_85 (B1), ShiVal_89 (B1), Sigman_90 (B1), SilverBell_92 (B1), Simielle_90 (B1), Skippy_91 (B1), Slatt_91 (B1), Soile_92 (B1), Solosis_89 (B1), Sophia_89 (B1), Soto_88 (B1), Spartan300_90 (B1), Squid_90 (B1), Squiggle_90 (B1), Struggle_91 (B1), Surely_91 (B1), Swiphy_95 (B1), Swish_92 (B1), TallGrassMM_90 (B1), Telesworld_89 (B1), Thora_89 (B1), ThreeOh3D2_92 (B1), Thunderbird_91 (B1), Timmi_89 (B1), TomBombadil_91 (B1), Tomlarah_91 (B1), Toni_90 (B1), Tooj_88 (B1), True_89 (B1), Trypo_91 (B1), TyrionL_91 (B1), UAch1_92 (B1), UncleHowie_87 (B1), Usavi_91 (B1), Vaishali24_92 (B1), Valjean_89 (B1), Vaticameos_88 (B1),

Veritas_90 (B1), Virapocalypse_92 (B1), Virgeve_89 (B1), Vista_90 (B1), Vivaldi_91 (B1), Vortex_89 (B1), Wallhey_92 (B1), Waterdiva_92 (B1), Weher20_88 (B1), Windsor_91 (B1), Xavier_90 (B1), Yoshand_92 (B1), YouGoGlencoco_91 (B1), Zaider_92 (B1), Zelda_91 (B1), Zonia_91 (B1),

Start 6:

- Found in 10 of 281 (3.6%) of genes in pham
- Manual Annotations of this start: 5 of 266
- Called 90.0% of time when present
- Phage (with cluster) where this start called: 39HC_086 (B6), 40BC_086 (B6), BirdsNest_95 (B13), Funsized_83 (B9), Hashim76_95 (B13), Jolie1_083 (B6), KayaCho_82 (B6), LilMcDreamy_79 (B12), Zenteno07_95 (B13),

Start 9:

- Found in 278 of 281 (98.9%) of genes in pham
- No Manual Annotations of this start.
- Called 0.4% of time when present
- Phage (with cluster) where this start called: Hosp_081 (B6),

Summary by clusters:

There are 6 clusters represented in this pham: AE, B6, B12, B1, B9, B13,

Info for manual annotations of cluster AE:

- Start number 2 was manually annotated 1 time for cluster AE.
- Start number 4 was manually annotated 2 times for cluster AE.

Info for manual annotations of cluster B1:

- Start number 4 was manually annotated 258 times for cluster B1.

Info for manual annotations of cluster B12:

- Start number 6 was manually annotated 1 time for cluster B12.

Info for manual annotations of cluster B13:

- Start number 6 was manually annotated 2 times for cluster B13.

Info for manual annotations of cluster B6:

- Start number 6 was manually annotated 1 time for cluster B6.

Info for manual annotations of cluster B9:

- Start number 6 was manually annotated 1 time for cluster B9.

Gene Information:

Gene: 39HC_086 Start: 65073, Stop: 64801, Start Num: 6

Candidate Starts for 39HC_086:

(Start: 6 @65073 has 5 MA's), (9, 65031),

Gene: 40BC_086 Start: 65073, Stop: 64801, Start Num: 6

Candidate Starts for 40BC_086:

(Start: 6 @65073 has 5 MA's), (9, 65031),

Gene: ABU_89 Start: 64749, Stop: 64528, Start Num: 4

Candidate Starts for ABU_89:

(Start: 4 @64749 has 260 MA's), (5, 64740), (7, 64716), (9, 64683), (10, 64674),

Gene: AbsoluteMadLad_89 Start: 64702, Stop: 64481, Start Num: 4

Candidate Starts for AbsoluteMadLad_89:

(Start: 4 @64702 has 260 MA's), (5, 64693), (7, 64669), (9, 64636), (10, 64627),

Gene: Adriana_91 Start: 65264, Stop: 65043, Start Num: 4

Candidate Starts for Adriana_91:

(Start: 4 @65264 has 260 MA's), (5, 65255), (7, 65231), (9, 65198), (10, 65189),

Gene: Aikoy_102 Start: 66205, Stop: 66456, Start Num: 4

Candidate Starts for Aikoy_102:

(Start: 2 @66157 has 1 MA's), (Start: 4 @66205 has 260 MA's), (5, 66214), (9, 66271), (11, 66283), (14, 66301), (15, 66313),

Gene: AltPhacts_88 Start: 63968, Stop: 63747, Start Num: 4

Candidate Starts for AltPhacts_88:

(Start: 4 @63968 has 260 MA's), (5, 63959), (7, 63935), (9, 63902), (10, 63893),

Gene: Altwerkus_88 Start: 64078, Stop: 63857, Start Num: 4

Candidate Starts for Altwerkus_88:

(Start: 4 @64078 has 260 MA's), (5, 64069), (7, 64045), (9, 64012), (10, 64003),

Gene: Anderson_92 Start: 64625, Stop: 64404, Start Num: 4

Candidate Starts for Anderson_92:

(Start: 4 @64625 has 260 MA's), (5, 64616), (7, 64592), (9, 64559), (10, 64550),

Gene: Andre_93 Start: 64647, Stop: 64426, Start Num: 4

Candidate Starts for Andre_93:

(Start: 4 @64647 has 260 MA's), (5, 64638), (7, 64614), (9, 64581), (10, 64572),

Gene: Antonia_90 Start: 64251, Stop: 64030, Start Num: 4

Candidate Starts for Antonia_90:

(Start: 4 @64251 has 260 MA's), (5, 64242), (7, 64218), (9, 64185), (10, 64176),

Gene: Apizium_89 Start: 63906, Stop: 63685, Start Num: 4

Candidate Starts for Apizium_89:

(Start: 4 @63906 has 260 MA's), (5, 63897), (7, 63873), (9, 63840), (10, 63831),

Gene: Ashraf_92 Start: 64738, Stop: 64517, Start Num: 4

Candidate Starts for Ashraf_92:

(Start: 4 @64738 has 260 MA's), (5, 64729), (7, 64705), (9, 64672), (10, 64663),

Gene: Badfish_91 Start: 64929, Stop: 64708, Start Num: 4

Candidate Starts for Badfish_91:

(Start: 4 @64929 has 260 MA's), (5, 64920), (7, 64896), (9, 64863), (10, 64854),

Gene: Banjo_87 Start: 64195, Stop: 63974, Start Num: 4

Candidate Starts for Banjo_87:

(Start: 4 @64195 has 260 MA's), (5, 64186), (7, 64162), (9, 64129), (10, 64120),

Gene: Basato_90 Start: 64660, Stop: 64439, Start Num: 4
Candidate Starts for Basato_90:
(Start: 4 @64660 has 260 MA's), (5, 64651), (7, 64627), (9, 64594), (10, 64585),

Gene: BatteryCK_89 Start: 64186, Stop: 63965, Start Num: 4
Candidate Starts for BatteryCK_89:
(Start: 4 @64186 has 260 MA's), (5, 64177), (7, 64153), (9, 64120), (10, 64111),

Gene: Beaglebox_87 Start: 64317, Stop: 64096, Start Num: 4
Candidate Starts for Beaglebox_87:
(Start: 4 @64317 has 260 MA's), (5, 64308), (7, 64284), (9, 64251), (10, 64242),

Gene: BirdsNest_95 Start: 67179, Stop: 66952, Start Num: 6
Candidate Starts for BirdsNest_95:
(Start: 6 @67179 has 5 MA's), (9, 67134), (14, 67104), (23, 66978), (24, 66969),

Gene: Bishoperium_91 Start: 64764, Stop: 64543, Start Num: 4
Candidate Starts for Bishoperium_91:
(Start: 4 @64764 has 260 MA's), (5, 64755), (7, 64731), (9, 64698), (10, 64689),

Gene: BlackStallion_90 Start: 64614, Stop: 64393, Start Num: 4
Candidate Starts for BlackStallion_90:
(Start: 4 @64614 has 260 MA's), (5, 64605), (7, 64581), (9, 64548), (10, 64539),

Gene: BlueHusk_92 Start: 64438, Stop: 64217, Start Num: 4
Candidate Starts for BlueHusk_92:
(Start: 4 @64438 has 260 MA's), (5, 64429), (7, 64405), (9, 64372), (10, 64363),

Gene: Bluephacebaby_90 Start: 64798, Stop: 64577, Start Num: 4
Candidate Starts for Bluephacebaby_90:
(Start: 4 @64798 has 260 MA's), (5, 64789), (7, 64765), (9, 64732), (10, 64723),

Gene: Boehler_89 Start: 64589, Stop: 64368, Start Num: 4
Candidate Starts for Boehler_89:
(Start: 4 @64589 has 260 MA's), (5, 64580), (7, 64556), (9, 64523), (10, 64514),

Gene: Brilliant_94 Start: 64778, Stop: 64557, Start Num: 4
Candidate Starts for Brilliant_94:
(Start: 4 @64778 has 260 MA's), (5, 64769), (7, 64745), (9, 64712), (10, 64703),

Gene: Buckeye_90 Start: 65316, Stop: 65095, Start Num: 4
Candidate Starts for Buckeye_90:
(Start: 4 @65316 has 260 MA's), (5, 65307), (7, 65283), (9, 65250), (10, 65241),

Gene: Burr_91 Start: 64250, Stop: 64029, Start Num: 4
Candidate Starts for Burr_91:
(Start: 4 @64250 has 260 MA's), (5, 64241), (7, 64217), (9, 64184), (10, 64175),

Gene: CamL_91 Start: 64549, Stop: 64328, Start Num: 4
Candidate Starts for CamL_91:
(Start: 4 @64549 has 260 MA's), (5, 64540), (7, 64516), (9, 64483), (10, 64474),

Gene: CampRoach_91 Start: 64646, Stop: 64425, Start Num: 4
Candidate Starts for CampRoach_91:
(Start: 4 @64646 has 260 MA's), (5, 64637), (7, 64613), (9, 64580), (10, 64571),

Gene: Cannibal_91 Start: 64652, Stop: 64431, Start Num: 4
Candidate Starts for Cannibal_91:
(Start: 4 @64652 has 260 MA's), (5, 64643), (7, 64619), (9, 64586), (10, 64577),

Gene: Carthage_92 Start: 64329, Stop: 64087, Start Num: 4
Candidate Starts for Carthage_92:
(Start: 4 @64329 has 260 MA's), (5, 64320), (7, 64296), (9, 64263), (10, 64254), (18, 64182),

Gene: Chaelin_92 Start: 64780, Stop: 64559, Start Num: 4
Candidate Starts for Chaelin_92:
(Start: 4 @64780 has 260 MA's), (5, 64771), (7, 64747), (9, 64714), (10, 64705),

Gene: Chah_93 Start: 64349, Stop: 64128, Start Num: 4
Candidate Starts for Chah_93:
(Start: 4 @64349 has 260 MA's), (5, 64340), (7, 64316), (9, 64283), (10, 64274),

Gene: Charles1_92 Start: 64558, Stop: 64337, Start Num: 4
Candidate Starts for Charles1_92:
(Start: 4 @64558 has 260 MA's), (5, 64549), (7, 64525), (9, 64492), (10, 64483),

Gene: CharlieGBrown_89 Start: 64281, Stop: 64060, Start Num: 4
Candidate Starts for CharlieGBrown_89:
(Start: 4 @64281 has 260 MA's), (5, 64272), (7, 64248), (9, 64215), (10, 64206),

Gene: CheetO_88 Start: 64655, Stop: 64434, Start Num: 4
Candidate Starts for CheetO_88:
(Start: 4 @64655 has 260 MA's), (5, 64646), (7, 64622), (9, 64589), (10, 64580),

Gene: Cher_91 Start: 64753, Stop: 64532, Start Num: 4
Candidate Starts for Cher_91:
(Start: 4 @64753 has 260 MA's), (5, 64744), (7, 64720), (9, 64687), (10, 64678),

Gene: Childish_91 Start: 64943, Stop: 64722, Start Num: 4
Candidate Starts for Childish_91:
(Start: 4 @64943 has 260 MA's), (5, 64934), (7, 64910), (9, 64877), (10, 64868),

Gene: Chorkpop_92 Start: 64406, Stop: 64185, Start Num: 4
Candidate Starts for Chorkpop_92:
(Start: 4 @64406 has 260 MA's), (5, 64397), (7, 64373), (9, 64340), (10, 64331),

Gene: Chunky_90 Start: 64251, Stop: 64030, Start Num: 4
Candidate Starts for Chunky_90:
(Start: 4 @64251 has 260 MA's), (5, 64242), (7, 64218), (9, 64185), (10, 64176),

Gene: Chute_91 Start: 64944, Stop: 64723, Start Num: 4
Candidate Starts for Chute_91:
(Start: 4 @64944 has 260 MA's), (5, 64935), (7, 64911), (9, 64878), (10, 64869),

Gene: Cobra_91 Start: 64775, Stop: 64554, Start Num: 4

Candidate Starts for Cobra_91:

(Start: 4 @64775 has 260 MA's), (5, 64766), (7, 64742), (9, 64709), (10, 64700),

Gene: Colbert_89 Start: 63673, Stop: 63452, Start Num: 4

Candidate Starts for Colbert_89:

(Start: 4 @63673 has 260 MA's), (5, 63664), (7, 63640), (9, 63607), (10, 63598),

Gene: Coletti_93 Start: 65300, Stop: 65079, Start Num: 4

Candidate Starts for Coletti_93:

(Start: 4 @65300 has 260 MA's), (5, 65291), (7, 65267), (9, 65234), (10, 65225),

Gene: Cosmolli16_93 Start: 65121, Stop: 64900, Start Num: 4

Candidate Starts for Cosmolli16_93:

(Start: 4 @65121 has 260 MA's), (5, 65112), (7, 65088), (9, 65055), (10, 65046),

Gene: Craff_92 Start: 65164, Stop: 64943, Start Num: 4

Candidate Starts for Craff_92:

(Start: 4 @65164 has 260 MA's), (5, 65155), (7, 65131), (9, 65098), (10, 65089),

Gene: Crownjwl_88 Start: 64430, Stop: 64209, Start Num: 4

Candidate Starts for Crownjwl_88:

(Start: 4 @64430 has 260 MA's), (5, 64421), (7, 64397), (9, 64364), (10, 64355),

Gene: DaddyDaniels_94 Start: 64897, Stop: 64676, Start Num: 4

Candidate Starts for DaddyDaniels_94:

(Start: 4 @64897 has 260 MA's), (5, 64888), (7, 64864), (9, 64831), (10, 64822),

Gene: Daffy_90 Start: 64391, Stop: 64170, Start Num: 4

Candidate Starts for Daffy_90:

(Start: 4 @64391 has 260 MA's), (5, 64382), (7, 64358), (9, 64325), (10, 64316),

Gene: Daka_93 Start: 64596, Stop: 64375, Start Num: 4

Candidate Starts for Daka_93:

(Start: 4 @64596 has 260 MA's), (5, 64587), (7, 64563), (9, 64530), (10, 64521),

Gene: Dati_88 Start: 64575, Stop: 64354, Start Num: 4

Candidate Starts for Dati_88:

(Start: 4 @64575 has 260 MA's), (5, 64566), (7, 64542), (9, 64509), (10, 64500),

Gene: DelRivs_89 Start: 64204, Stop: 63983, Start Num: 4

Candidate Starts for DelRivs_89:

(Start: 4 @64204 has 260 MA's), (5, 64195), (7, 64171), (9, 64138), (10, 64129),

Gene: Derpp_90 Start: 64314, Stop: 64093, Start Num: 4

Candidate Starts for Derpp_90:

(Start: 4 @64314 has 260 MA's), (5, 64305), (7, 64281), (9, 64248), (10, 64239),

Gene: Dice_90 Start: 64236, Stop: 64015, Start Num: 4

Candidate Starts for Dice_90:

(Start: 4 @64236 has 260 MA's), (5, 64227), (7, 64203), (9, 64170), (10, 64161),

Gene: Dingo_88 Start: 63957, Stop: 63736, Start Num: 4

Candidate Starts for Dingo_88:

(Start: 4 @63957 has 260 MA's), (5, 63948), (7, 63924), (9, 63891), (10, 63882),

Gene: Dione_89 Start: 63956, Stop: 63735, Start Num: 4

Candidate Starts for Dione_89:

(Start: 4 @63956 has 260 MA's), (5, 63947), (7, 63923), (9, 63890), (10, 63881),

Gene: DirtJuice_90 Start: 64696, Stop: 64475, Start Num: 4

Candidate Starts for DirtJuice_90:

(Start: 4 @64696 has 260 MA's), (5, 64687), (7, 64663), (9, 64630), (10, 64621),

Gene: Doddsville_88 Start: 64396, Stop: 64175, Start Num: 4

Candidate Starts for Doddsville_88:

(Start: 4 @64396 has 260 MA's), (5, 64387), (7, 64363), (9, 64330), (10, 64321),

Gene: DoesntMatter_88 Start: 64232, Stop: 64011, Start Num: 4

Candidate Starts for DoesntMatter_88:

(Start: 4 @64232 has 260 MA's), (5, 64223), (7, 64199), (9, 64166), (10, 64157),

Gene: DonSanchon_86 Start: 63914, Stop: 63693, Start Num: 4

Candidate Starts for DonSanchon_86:

(Start: 4 @63914 has 260 MA's), (5, 63905), (7, 63881), (9, 63848), (10, 63839),

Gene: DuchessDung_88 Start: 63912, Stop: 63691, Start Num: 4

Candidate Starts for DuchessDung_88:

(Start: 4 @63912 has 260 MA's), (5, 63903), (7, 63879), (9, 63846), (10, 63837),

Gene: Duggie_91 Start: 64538, Stop: 64317, Start Num: 4

Candidate Starts for Duggie_91:

(Start: 4 @64538 has 260 MA's), (5, 64529), (7, 64505), (9, 64472), (10, 64463),

Gene: Durga_93 Start: 65020, Stop: 64799, Start Num: 4

Candidate Starts for Durga_93:

(Start: 4 @65020 has 260 MA's), (5, 65011), (7, 64987), (9, 64954), (10, 64945),

Gene: Emiris_93 Start: 64926, Stop: 64705, Start Num: 4

Candidate Starts for Emiris_93:

(Start: 4 @64926 has 260 MA's), (5, 64917), (7, 64893), (9, 64860), (10, 64851),

Gene: EmpTee_90 Start: 64328, Stop: 64107, Start Num: 4

Candidate Starts for EmpTee_90:

(Start: 4 @64328 has 260 MA's), (5, 64319), (7, 64295), (9, 64262), (10, 64253),

Gene: Eremos_89 Start: 64618, Stop: 64397, Start Num: 4

Candidate Starts for Eremos_89:

(Start: 4 @64618 has 260 MA's), (5, 64609), (7, 64585), (9, 64552), (10, 64543),

Gene: Etaye_90 Start: 65104, Stop: 64883, Start Num: 4

Candidate Starts for Etaye_90:

(Start: 4 @65104 has 260 MA's), (5, 65095), (7, 65071), (9, 65038), (10, 65029),

Gene: Eugenia_93 Start: 65038, Stop: 64817, Start Num: 4

Candidate Starts for Eugenia_93:

(Start: 4 @65038 has 260 MA's), (5, 65029), (7, 65005), (9, 64972), (10, 64963),

Gene: Fang_92 Start: 64746, Stop: 64525, Start Num: 4
Candidate Starts for Fang_92:
(Start: 4 @64746 has 260 MA's), (5, 64737), (7, 64713), (9, 64680), (10, 64671),

Gene: FluffyNinja_92 Start: 64616, Stop: 64395, Start Num: 4
Candidate Starts for FluffyNinja_92:
(Start: 4 @64616 has 260 MA's), (5, 64607), (7, 64583), (9, 64550), (10, 64541),

Gene: Fozzie_88 Start: 64942, Stop: 64721, Start Num: 4
Candidate Starts for Fozzie_88:
(Start: 4 @64942 has 260 MA's), (5, 64933), (7, 64909), (9, 64876), (10, 64867),

Gene: Frankicide_89 Start: 64442, Stop: 64221, Start Num: 4
Candidate Starts for Frankicide_89:
(Start: 4 @64442 has 260 MA's), (5, 64433), (7, 64409), (9, 64376), (10, 64367),

Gene: Freya_87 Start: 63934, Stop: 63713, Start Num: 4
Candidate Starts for Freya_87:
(Start: 4 @63934 has 260 MA's), (5, 63925), (7, 63901), (9, 63868), (10, 63859),

Gene: FriarPreacher_88 Start: 64315, Stop: 64094, Start Num: 4
Candidate Starts for FriarPreacher_88:
(Start: 4 @64315 has 260 MA's), (5, 64306), (7, 64282), (9, 64249), (10, 64240),

Gene: Fringe_95 Start: 65092, Stop: 64871, Start Num: 4
Candidate Starts for Fringe_95:
(Start: 4 @65092 has 260 MA's), (5, 65083), (7, 65059), (9, 65026), (10, 65017),

Gene: FugateOSU_91 Start: 65375, Stop: 65154, Start Num: 4
Candidate Starts for FugateOSU_91:
(Start: 4 @65375 has 260 MA's), (5, 65366), (7, 65342), (9, 65309), (10, 65300),

Gene: Funsized_83 Start: 66552, Stop: 66259, Start Num: 6
Candidate Starts for Funsized_83:
(1, 66690), (3, 66585), (Start: 6 @66552 has 5 MA's), (8, 66519), (12, 66492), (13, 66489), (20, 66387), (25, 66303),

Gene: Gareth_91 Start: 64764, Stop: 64543, Start Num: 4
Candidate Starts for Gareth_91:
(Start: 4 @64764 has 260 MA's), (5, 64755), (7, 64731), (9, 64698), (10, 64689),

Gene: GeneCoco_91 Start: 64944, Stop: 64723, Start Num: 4
Candidate Starts for GeneCoco_91:
(Start: 4 @64944 has 260 MA's), (5, 64935), (7, 64911), (9, 64878), (10, 64869),

Gene: Giraffe_91 Start: 64768, Stop: 64547, Start Num: 4
Candidate Starts for Giraffe_91:
(Start: 4 @64768 has 260 MA's), (5, 64759), (7, 64735), (9, 64702), (10, 64693),

Gene: Gophee_90 Start: 64755, Stop: 64534, Start Num: 4
Candidate Starts for Gophee_90:
(Start: 4 @64755 has 260 MA's), (5, 64746), (7, 64722), (9, 64689), (10, 64680),

Gene: Grand2040_89 Start: 64733, Stop: 64512, Start Num: 4

Candidate Starts for Grand2040_89:

(Start: 4 @64733 has 260 MA's), (5, 64724), (7, 64700), (9, 64667), (10, 64658),

Gene: Gwilliam_91 Start: 65299, Stop: 65078, Start Num: 4

Candidate Starts for Gwilliam_91:

(Start: 4 @65299 has 260 MA's), (5, 65290), (7, 65266), (9, 65233), (10, 65224),

Gene: Gyarad_0090 Start: 64253, Stop: 64032, Start Num: 4

Candidate Starts for Gyarad_0090:

(Start: 4 @64253 has 260 MA's), (5, 64244), (7, 64220), (9, 64187), (10, 64178),

Gene: HSavage_89 Start: 64270, Stop: 64049, Start Num: 4

Candidate Starts for HSavage_89:

(Start: 4 @64270 has 260 MA's), (5, 64261), (7, 64237), (9, 64204), (10, 64195),

Gene: Haimas_88 Start: 64195, Stop: 63974, Start Num: 4

Candidate Starts for Haimas_88:

(Start: 4 @64195 has 260 MA's), (5, 64186), (7, 64162), (9, 64129), (10, 64120),

Gene: Haleema_90 Start: 64314, Stop: 64093, Start Num: 4

Candidate Starts for Haleema_90:

(Start: 4 @64314 has 260 MA's), (5, 64305), (7, 64281), (9, 64248), (10, 64239),

Gene: Hamish_88 Start: 64483, Stop: 64262, Start Num: 4

Candidate Starts for Hamish_88:

(Start: 4 @64483 has 260 MA's), (5, 64474), (7, 64450), (9, 64417), (10, 64408),

Gene: Hartsy_89 Start: 64432, Stop: 64211, Start Num: 4

Candidate Starts for Hartsy_89:

(Start: 4 @64432 has 260 MA's), (5, 64423), (7, 64399), (9, 64366), (10, 64357),

Gene: Harvey_88 Start: 64092, Stop: 63871, Start Num: 4

Candidate Starts for Harvey_88:

(Start: 4 @64092 has 260 MA's), (5, 64083), (7, 64059), (9, 64026), (10, 64017),

Gene: Hashim76_95 Start: 66668, Stop: 66417, Start Num: 6

Candidate Starts for Hashim76_95:

(Start: 6 @66668 has 5 MA's), (9, 66623), (14, 66593), (19, 66521), (22, 66464), (23, 66461),

Gene: Held_89 Start: 64213, Stop: 63992, Start Num: 4

Candidate Starts for Held_89:

(Start: 4 @64213 has 260 MA's), (5, 64204), (7, 64180), (9, 64147), (10, 64138),

Gene: HenryJackson_91 Start: 64932, Stop: 64711, Start Num: 4

Candidate Starts for HenryJackson_91:

(Start: 4 @64932 has 260 MA's), (5, 64923), (7, 64899), (9, 64866), (10, 64857),

Gene: Hertubise_90 Start: 64574, Stop: 64353, Start Num: 4

Candidate Starts for Hertubise_90:

(Start: 4 @64574 has 260 MA's), (5, 64565), (7, 64541), (9, 64508), (10, 64499),

Gene: Hetaeria_91 Start: 64581, Stop: 64360, Start Num: 4
Candidate Starts for Hetaeria_91:
(Start: 4 @64581 has 260 MA's), (5, 64572), (7, 64548), (9, 64515), (10, 64506),

Gene: HighStump_92 Start: 64719, Stop: 64498, Start Num: 4
Candidate Starts for HighStump_92:
(Start: 4 @64719 has 260 MA's), (5, 64710), (7, 64686), (9, 64653), (10, 64644),

Gene: Hocus_89 Start: 64233, Stop: 64012, Start Num: 4
Candidate Starts for Hocus_89:
(Start: 4 @64233 has 260 MA's), (5, 64224), (7, 64200), (9, 64167), (10, 64158),

Gene: Horchata_86 Start: 64410, Stop: 64189, Start Num: 4
Candidate Starts for Horchata_86:
(Start: 4 @64410 has 260 MA's), (5, 64401), (7, 64377), (9, 64344), (10, 64335),

Gene: Hosp_081 Start: 62319, Stop: 62089, Start Num: 9
Candidate Starts for Hosp_081:
(Start: 6 @62361 has 5 MA's), (9, 62319), (14, 62289), (16, 62268), (17, 62244), (19, 62232),

Gene: ImtiyazSitla_92 Start: 64738, Stop: 64517, Start Num: 4
Candidate Starts for ImtiyazSitla_92:
(Start: 4 @64738 has 260 MA's), (5, 64729), (7, 64705), (9, 64672), (10, 64663),

Gene: Inchworm_92 Start: 64606, Stop: 64385, Start Num: 4
Candidate Starts for Inchworm_92:
(Start: 4 @64606 has 260 MA's), (5, 64597), (7, 64573), (9, 64540), (10, 64531),

Gene: Inverness_89 Start: 64407, Stop: 64186, Start Num: 4
Candidate Starts for Inverness_89:
(Start: 4 @64407 has 260 MA's), (5, 64398), (7, 64374), (9, 64341), (10, 64332),

Gene: Iridoclysis_90 Start: 64497, Stop: 64276, Start Num: 4
Candidate Starts for Iridoclysis_90:
(Start: 4 @64497 has 260 MA's), (5, 64488), (7, 64464), (9, 64431), (10, 64422),

Gene: IsaacEli_93 Start: 64737, Stop: 64516, Start Num: 4
Candidate Starts for IsaacEli_93:
(Start: 4 @64737 has 260 MA's), (5, 64728), (7, 64704), (9, 64671), (10, 64662),

Gene: JDog_90 Start: 64767, Stop: 64546, Start Num: 4
Candidate Starts for JDog_90:
(Start: 4 @64767 has 260 MA's), (5, 64758), (7, 64734), (9, 64701), (10, 64692),

Gene: JacAttac_91 Start: 64211, Stop: 63990, Start Num: 4
Candidate Starts for JacAttac_91:
(Start: 4 @64211 has 260 MA's), (5, 64202), (7, 64178), (9, 64145), (10, 64136),

Gene: JakeO_92 Start: 64495, Stop: 64274, Start Num: 4
Candidate Starts for JakeO_92:
(Start: 4 @64495 has 260 MA's), (5, 64486), (7, 64462), (9, 64429), (10, 64420),

Gene: JangoPhett_89 Start: 64571, Stop: 64350, Start Num: 4

Candidate Starts for JangoPhett_89:

(Start: 4 @64571 has 260 MA's), (5, 64562), (7, 64538), (9, 64505), (10, 64496),

Gene: Jillium_92 Start: 64927, Stop: 64706, Start Num: 4

Candidate Starts for Jillium_92:

(Start: 4 @64927 has 260 MA's), (5, 64918), (7, 64894), (9, 64861), (10, 64852),

Gene: Jiminy_91 Start: 64431, Stop: 64210, Start Num: 4

Candidate Starts for Jiminy_91:

(Start: 4 @64431 has 260 MA's), (5, 64422), (7, 64398), (9, 64365), (10, 64356),

Gene: Jolie1_083 Start: 64388, Stop: 64116, Start Num: 6

Candidate Starts for Jolie1_083:

(Start: 6 @64388 has 5 MA's), (9, 64346), (14, 64316), (16, 64295), (17, 64271), (19, 64259),

Gene: KLucky39_89 Start: 64290, Stop: 64069, Start Num: 4

Candidate Starts for KLucky39_89:

(Start: 4 @64290 has 260 MA's), (5, 64281), (7, 64257), (9, 64224), (10, 64215),

Gene: Kahve_91 Start: 64930, Stop: 64709, Start Num: 4

Candidate Starts for Kahve_91:

(Start: 4 @64930 has 260 MA's), (5, 64921), (7, 64897), (9, 64864), (10, 64855),

Gene: Kailash_89 Start: 64630, Stop: 64409, Start Num: 4

Candidate Starts for Kailash_89:

(Start: 4 @64630 has 260 MA's), (5, 64621), (7, 64597), (9, 64564), (10, 64555),

Gene: Katniss_93 Start: 64346, Stop: 64125, Start Num: 4

Candidate Starts for Katniss_93:

(Start: 4 @64346 has 260 MA's), (5, 64337), (7, 64313), (9, 64280), (10, 64271),

Gene: KayaCho_82 Start: 64280, Stop: 64017, Start Num: 6

Candidate Starts for KayaCho_82:

(Start: 6 @64280 has 5 MA's), (9, 64238), (14, 64208), (21, 64103),

Gene: Keitherie_94 Start: 64988, Stop: 64767, Start Num: 4

Candidate Starts for Keitherie_94:

(Start: 4 @64988 has 260 MA's), (5, 64979), (7, 64955), (9, 64922), (10, 64913),

Gene: Kikipoo_93 Start: 64737, Stop: 64516, Start Num: 4

Candidate Starts for Kikipoo_93:

(Start: 4 @64737 has 260 MA's), (5, 64728), (7, 64704), (9, 64671), (10, 64662),

Gene: Kimbrough_92 Start: 64809, Stop: 64588, Start Num: 4

Candidate Starts for Kimbrough_92:

(Start: 4 @64809 has 260 MA's), (5, 64800), (7, 64776), (9, 64743), (10, 64734),

Gene: KingTut_82 Start: 60969, Stop: 60748, Start Num: 4

Candidate Starts for KingTut_82:

(Start: 4 @60969 has 260 MA's), (5, 60960), (7, 60936), (9, 60903), (10, 60894),

Gene: KingVeVeVe_89 Start: 63943, Stop: 63722, Start Num: 4

Candidate Starts for KingVeVeVe_89:

(Start: 4 @63943 has 260 MA's), (5, 63934), (7, 63910), (9, 63877), (10, 63868),

Gene: KlimbOn_90 Start: 64249, Stop: 64028, Start Num: 4

Candidate Starts for KlimbOn_90:

(Start: 4 @64249 has 260 MA's), (5, 64240), (7, 64216), (9, 64183), (10, 64174),

Gene: Kloppinator_91 Start: 64379, Stop: 64158, Start Num: 4

Candidate Starts for Kloppinator_91:

(Start: 4 @64379 has 260 MA's), (5, 64370), (7, 64346), (9, 64313), (10, 64304),

Gene: Kwadwo_90 Start: 64234, Stop: 64013, Start Num: 4

Candidate Starts for Kwadwo_90:

(Start: 4 @64234 has 260 MA's), (5, 64225), (7, 64201), (9, 64168), (10, 64159),

Gene: Kwksand96_92 Start: 64501, Stop: 64280, Start Num: 4

Candidate Starts for Kwksand96_92:

(Start: 4 @64501 has 260 MA's), (5, 64492), (7, 64468), (9, 64435), (10, 64426),

Gene: Labeouficaum_91 Start: 64314, Stop: 64093, Start Num: 4

Candidate Starts for Labeouficaum_91:

(Start: 4 @64314 has 260 MA's), (5, 64305), (7, 64281), (9, 64248), (10, 64239),

Gene: LasagnaCat_92 Start: 64616, Stop: 64395, Start Num: 4

Candidate Starts for LasagnaCat_92:

(Start: 4 @64616 has 260 MA's), (5, 64607), (7, 64583), (9, 64550), (10, 64541),

Gene: Lasso_90 Start: 64475, Stop: 64254, Start Num: 4

Candidate Starts for Lasso_90:

(Start: 4 @64475 has 260 MA's), (5, 64466), (7, 64442), (9, 64409), (10, 64400),

Gene: LeeLot_89 Start: 64819, Stop: 64598, Start Num: 4

Candidate Starts for LeeLot_89:

(Start: 4 @64819 has 260 MA's), (5, 64810), (7, 64786), (9, 64753), (10, 64744),

Gene: Lego3393_89 Start: 64936, Stop: 64715, Start Num: 4

Candidate Starts for Lego3393_89:

(Start: 4 @64936 has 260 MA's), (5, 64927), (7, 64903), (9, 64870), (10, 64861),

Gene: Legolas_92 Start: 64563, Stop: 64342, Start Num: 4

Candidate Starts for Legolas_92:

(Start: 4 @64563 has 260 MA's), (5, 64554), (7, 64530), (9, 64497), (10, 64488),

Gene: LeiMonet_93 Start: 64697, Stop: 64476, Start Num: 4

Candidate Starts for LeiMonet_93:

(Start: 4 @64697 has 260 MA's), (5, 64688), (7, 64664), (9, 64631), (10, 64622),

Gene: LemonSlice_91 Start: 64222, Stop: 64001, Start Num: 4

Candidate Starts for LemonSlice_91:

(Start: 4 @64222 has 260 MA's), (5, 64213), (7, 64189), (9, 64156), (10, 64147),

Gene: Leopard_100 Start: 66137, Stop: 66388, Start Num: 4

Candidate Starts for Leopard_100:

(Start: 2 @66089 has 1 MA's), (Start: 4 @66137 has 260 MA's), (5, 66146), (9, 66203), (11, 66215), (14, 66233), (15, 66245),

Gene: LilMcDreamy_79 Start: 63285, Stop: 63025, Start Num: 6
Candidate Starts for LilMcDreamy_79:
(Start: 6 @63285 has 5 MA's), (14, 63210),

Gene: Longacauda_92 Start: 64716, Stop: 64495, Start Num: 4
Candidate Starts for Longacauda_92:
(Start: 4 @64716 has 260 MA's), (5, 64707), (7, 64683), (9, 64650), (10, 64641),

Gene: LostAndPhound_90 Start: 64764, Stop: 64543, Start Num: 4
Candidate Starts for LostAndPhound_90:
(Start: 4 @64764 has 260 MA's), (5, 64755), (7, 64731), (9, 64698), (10, 64689),

Gene: LuckyMarjie_88 Start: 63974, Stop: 63753, Start Num: 4
Candidate Starts for LuckyMarjie_88:
(Start: 4 @63974 has 260 MA's), (5, 63965), (7, 63941), (9, 63908), (10, 63899),

Gene: Lulumae_86 Start: 63955, Stop: 63734, Start Num: 4
Candidate Starts for Lulumae_86:
(Start: 4 @63955 has 260 MA's), (5, 63946), (7, 63922), (9, 63889), (10, 63880),

Gene: Lulwa_88 Start: 63588, Stop: 63367, Start Num: 4
Candidate Starts for Lulwa_88:
(Start: 4 @63588 has 260 MA's), (5, 63579), (7, 63555), (9, 63522), (10, 63513),

Gene: Lumine_92 Start: 64413, Stop: 64192, Start Num: 4
Candidate Starts for Lumine_92:
(Start: 4 @64413 has 260 MA's), (5, 64404), (7, 64380), (9, 64347), (10, 64338),

Gene: MRabcd_91 Start: 64690, Stop: 64469, Start Num: 4
Candidate Starts for MRabcd_91:
(Start: 4 @64690 has 260 MA's), (5, 64681), (7, 64657), (9, 64624), (10, 64615),

Gene: Mag7_89 Start: 64174, Stop: 63953, Start Num: 4
Candidate Starts for Mag7_89:
(Start: 4 @64174 has 260 MA's), (5, 64165), (7, 64141), (9, 64108), (10, 64099),

Gene: Magic8_90 Start: 64542, Stop: 64321, Start Num: 4
Candidate Starts for Magic8_90:
(Start: 4 @64542 has 260 MA's), (5, 64533), (7, 64509), (9, 64476), (10, 64467),

Gene: Mana_88 Start: 64378, Stop: 64157, Start Num: 4
Candidate Starts for Mana_88:
(Start: 4 @64378 has 260 MA's), (5, 64369), (7, 64345), (9, 64312), (10, 64303),

Gene: Manad_90 Start: 64488, Stop: 64267, Start Num: 4
Candidate Starts for Manad_90:
(Start: 4 @64488 has 260 MA's), (5, 64479), (7, 64455), (9, 64422), (10, 64413),

Gene: Maru_91 Start: 64826, Stop: 64605, Start Num: 4
Candidate Starts for Maru_91:

(Start: 4 @64826 has 260 MA's), (5, 64817), (7, 64793), (9, 64760), (10, 64751),

Gene: Maskar_92 Start: 64738, Stop: 64517, Start Num: 4

Candidate Starts for Maskar_92:

(Start: 4 @64738 has 260 MA's), (5, 64729), (7, 64705), (9, 64672), (10, 64663),

Gene: Matalotodo_89 Start: 65222, Stop: 65001, Start Num: 4

Candidate Starts for Matalotodo_89:

(Start: 4 @65222 has 260 MA's), (5, 65213), (7, 65189), (9, 65156), (10, 65147),

Gene: Mcshane_90 Start: 64236, Stop: 64015, Start Num: 4

Candidate Starts for Mcshane_90:

(Start: 4 @64236 has 260 MA's), (5, 64227), (7, 64203), (9, 64170), (10, 64161),

Gene: Mecca_91 Start: 64790, Stop: 64569, Start Num: 4

Candidate Starts for Mecca_91:

(Start: 4 @64790 has 260 MA's), (5, 64781), (7, 64757), (9, 64724), (10, 64715),

Gene: Megamind20_91 Start: 64200, Stop: 63979, Start Num: 4

Candidate Starts for Megamind20_91:

(Start: 4 @64200 has 260 MA's), (5, 64191), (7, 64167), (9, 64134), (10, 64125),

Gene: Megatron_92 Start: 64908, Stop: 64687, Start Num: 4

Candidate Starts for Megatron_92:

(Start: 4 @64908 has 260 MA's), (5, 64899), (7, 64875), (9, 64842), (10, 64833),

Gene: Melc17_88 Start: 64858, Stop: 64637, Start Num: 4

Candidate Starts for Melc17_88:

(Start: 4 @64858 has 260 MA's), (5, 64849), (7, 64825), (9, 64792), (10, 64783),

Gene: MelsMeow_90 Start: 64498, Stop: 64277, Start Num: 4

Candidate Starts for MelsMeow_90:

(Start: 4 @64498 has 260 MA's), (5, 64489), (7, 64465), (9, 64432), (10, 64423),

Gene: Mesh1_92 Start: 64951, Stop: 64730, Start Num: 4

Candidate Starts for Mesh1_92:

(Start: 4 @64951 has 260 MA's), (5, 64942), (7, 64918), (9, 64885), (10, 64876),

Gene: MichaelPhcott_89 Start: 64171, Stop: 63950, Start Num: 4

Candidate Starts for MichaelPhcott_89:

(Start: 4 @64171 has 260 MA's), (5, 64162), (7, 64138), (9, 64105), (10, 64096),

Gene: Mikota_86 Start: 63942, Stop: 63721, Start Num: 4

Candidate Starts for Mikota_86:

(Start: 4 @63942 has 260 MA's), (5, 63933), (7, 63909), (9, 63876), (10, 63867),

Gene: MiniBoss_87 Start: 63542, Stop: 63321, Start Num: 4

Candidate Starts for MiniBoss_87:

(Start: 4 @63542 has 260 MA's), (5, 63533), (7, 63509), (9, 63476), (10, 63467),

Gene: MitKao_91 Start: 64392, Stop: 64171, Start Num: 4

Candidate Starts for MitKao_91:

(Start: 4 @64392 has 260 MA's), (5, 64383), (7, 64359), (9, 64326), (10, 64317),

Gene: Morgushi_88 Start: 64206, Stop: 63985, Start Num: 4
Candidate Starts for Morgushi_88:
(Start: 4 @64206 has 260 MA's), (5, 64197), (7, 64173), (9, 64140), (10, 64131),

Gene: Morty_91 Start: 64778, Stop: 64557, Start Num: 4
Candidate Starts for Morty_91:
(Start: 4 @64778 has 260 MA's), (5, 64769), (7, 64745), (9, 64712), (10, 64703),

Gene: Mosaic_88 Start: 64388, Stop: 64167, Start Num: 4
Candidate Starts for Mosaic_88:
(Start: 4 @64388 has 260 MA's), (5, 64379), (7, 64355), (9, 64322), (10, 64313),

Gene: MrPhizzler_90 Start: 64686, Stop: 64465, Start Num: 4
Candidate Starts for MrPhizzler_90:
(Start: 4 @64686 has 260 MA's), (5, 64677), (9, 64620), (10, 64611),

Gene: Mulan_90 Start: 64420, Stop: 64199, Start Num: 4
Candidate Starts for Mulan_90:
(Start: 4 @64420 has 260 MA's), (5, 64411), (7, 64387), (9, 64354), (10, 64345),

Gene: Murdoc_87 Start: 64499, Stop: 64278, Start Num: 4
Candidate Starts for Murdoc_87:
(Start: 4 @64499 has 260 MA's), (5, 64490), (7, 64466), (9, 64433), (10, 64424),

Gene: Mutante_92 Start: 64393, Stop: 64172, Start Num: 4
Candidate Starts for Mutante_92:
(Start: 4 @64393 has 260 MA's), (5, 64384), (7, 64360), (9, 64327), (10, 64318),

Gene: Nacho_0093 Start: 65464, Stop: 65243, Start Num: 4
Candidate Starts for Nacho_0093:
(Start: 4 @65464 has 260 MA's), (5, 65455), (7, 65431), (9, 65398), (10, 65389),

Gene: Newman_87 Start: 64741, Stop: 64520, Start Num: 4
Candidate Starts for Newman_87:
(Start: 4 @64741 has 260 MA's), (5, 64732), (7, 64708), (9, 64675), (10, 64666),

Gene: Nicole21_92 Start: 64526, Stop: 64305, Start Num: 4
Candidate Starts for Nicole21_92:
(Start: 4 @64526 has 260 MA's), (5, 64517), (7, 64493), (9, 64460), (10, 64451),

Gene: Numberten_90 Start: 64508, Stop: 64287, Start Num: 4
Candidate Starts for Numberten_90:
(Start: 4 @64508 has 260 MA's), (5, 64499), (7, 64475), (9, 64442), (10, 64433),

Gene: Nyala_90 Start: 64242, Stop: 64021, Start Num: 4
Candidate Starts for Nyala_90:
(Start: 4 @64242 has 260 MA's), (5, 64233), (7, 64209), (9, 64176), (10, 64167),

Gene: OSmaximus_92 Start: 65073, Stop: 64852, Start Num: 4
Candidate Starts for OSmaximus_92:
(Start: 4 @65073 has 260 MA's), (5, 65064), (7, 65040), (9, 65007), (10, 64998),

Gene: Olak_90 Start: 64406, Stop: 64185, Start Num: 4
Candidate Starts for Olak_90:
(Start: 4 @64406 has 260 MA's), (5, 64397), (7, 64373), (9, 64340), (10, 64331),

Gene: Oline_90 Start: 64397, Stop: 64176, Start Num: 4
Candidate Starts for Oline_90:
(Start: 4 @64397 has 260 MA's), (5, 64388), (7, 64364), (9, 64331), (10, 64322),

Gene: Olive_87 Start: 64638, Stop: 64417, Start Num: 4
Candidate Starts for Olive_87:
(Start: 4 @64638 has 260 MA's), (5, 64629), (7, 64605), (9, 64572), (10, 64563),

Gene: OliverWalter_90 Start: 64693, Stop: 64472, Start Num: 4
Candidate Starts for OliverWalter_90:
(Start: 4 @64693 has 260 MA's), (5, 64684), (7, 64660), (9, 64627), (10, 64618),

Gene: Omniscient_92 Start: 65096, Stop: 64875, Start Num: 4
Candidate Starts for Omniscient_92:
(Start: 4 @65096 has 260 MA's), (5, 65087), (7, 65063), (9, 65030), (10, 65021),

Gene: Onyinye_101 Start: 65950, Stop: 66249, Start Num: 2
Candidate Starts for Onyinye_101:
(Start: 2 @65950 has 1 MA's), (Start: 4 @65998 has 260 MA's), (5, 66007), (9, 66064), (11, 66076),
(14, 66094), (15, 66106),

Gene: Oosterbaan_91 Start: 64633, Stop: 64412, Start Num: 4
Candidate Starts for Oosterbaan_91:
(Start: 4 @64633 has 260 MA's), (5, 64624), (7, 64600), (9, 64567), (10, 64558),

Gene: Orfeu_90 Start: 64756, Stop: 64535, Start Num: 4
Candidate Starts for Orfeu_90:
(Start: 4 @64756 has 260 MA's), (5, 64747), (7, 64723), (9, 64690), (10, 64681),

Gene: Orion_89 Start: 64326, Stop: 64105, Start Num: 4
Candidate Starts for Orion_89:
(Start: 4 @64326 has 260 MA's), (5, 64317), (7, 64293), (9, 64260), (10, 64251),

Gene: Orwigg_91 Start: 64162, Stop: 63941, Start Num: 4
Candidate Starts for Orwigg_91:
(Start: 4 @64162 has 260 MA's), (5, 64153), (7, 64129), (9, 64096), (10, 64087),

Gene: PG1_89 Start: 64898, Stop: 64677, Start Num: 4
Candidate Starts for PG1_89:
(Start: 4 @64898 has 260 MA's), (5, 64889), (7, 64865), (9, 64832), (10, 64823),

Gene: Pacifista_90 Start: 64247, Stop: 64026, Start Num: 4
Candidate Starts for Pacifista_90:
(Start: 4 @64247 has 260 MA's), (5, 64238), (7, 64214), (9, 64181), (10, 64172),

Gene: Phamished_90 Start: 64414, Stop: 64193, Start Num: 4
Candidate Starts for Phamished_90:
(Start: 4 @64414 has 260 MA's), (5, 64405), (7, 64381), (9, 64348), (10, 64339),

Gene: Phareon_88 Start: 63939, Stop: 63718, Start Num: 4
Candidate Starts for Phareon_88:
(Start: 4 @63939 has 260 MA's), (5, 63930), (7, 63906), (9, 63873), (10, 63864),

Gene: PhatCats2014_90 Start: 64898, Stop: 64677, Start Num: 4
Candidate Starts for PhatCats2014_90:
(Start: 4 @64898 has 260 MA's), (5, 64889), (7, 64865), (9, 64832), (10, 64823),

Gene: PhatLouie_93 Start: 64772, Stop: 64551, Start Num: 4
Candidate Starts for PhatLouie_93:
(Start: 4 @64772 has 260 MA's), (5, 64763), (7, 64739), (9, 64706), (10, 64697),

Gene: PhenghisKhan_91 Start: 64403, Stop: 64182, Start Num: 4
Candidate Starts for PhenghisKhan_91:
(Start: 4 @64403 has 260 MA's), (5, 64394), (7, 64370), (9, 64337), (10, 64328),

Gene: Pherdinand_92 Start: 64618, Stop: 64397, Start Num: 4
Candidate Starts for Pherdinand_92:
(Start: 4 @64618 has 260 MA's), (5, 64609), (7, 64585), (9, 64552), (10, 64543),

Gene: Phergie_91 Start: 64392, Stop: 64171, Start Num: 4
Candidate Starts for Phergie_91:
(Start: 4 @64392 has 260 MA's), (5, 64383), (7, 64359), (9, 64326), (10, 64317),

Gene: Phipps_89 Start: 64470, Stop: 64249, Start Num: 4
Candidate Starts for Phipps_89:
(Start: 4 @64470 has 260 MA's), (5, 64461), (7, 64437), (9, 64404), (10, 64395),

Gene: Phleuron_88 Start: 64204, Stop: 63983, Start Num: 4
Candidate Starts for Phleuron_88:
(Start: 4 @64204 has 260 MA's), (5, 64195), (7, 64171), (9, 64138), (10, 64129),

Gene: PhrankReynolds_89 Start: 64397, Stop: 64176, Start Num: 4
Candidate Starts for PhrankReynolds_89:
(Start: 4 @64397 has 260 MA's), (5, 64388), (7, 64364), (9, 64331), (10, 64322),

Gene: PhrodoBaggins_93 Start: 64773, Stop: 64552, Start Num: 4
Candidate Starts for PhrodoBaggins_93:
(Start: 4 @64773 has 260 MA's), (5, 64764), (7, 64740), (9, 64707), (10, 64698),

Gene: Phunky_88 Start: 64276, Stop: 64055, Start Num: 4
Candidate Starts for Phunky_88:
(Start: 4 @64276 has 260 MA's), (5, 64267), (7, 64243), (9, 64210), (10, 64201),

Gene: Piglet_0090 Start: 64892, Stop: 64671, Start Num: 4
Candidate Starts for Piglet_0090:
(Start: 4 @64892 has 260 MA's), (5, 64883), (7, 64859), (9, 64826), (10, 64817),

Gene: PinheadLarry_90 Start: 64543, Stop: 64322, Start Num: 4
Candidate Starts for PinheadLarry_90:
(Start: 4 @64543 has 260 MA's), (5, 64534), (7, 64510), (9, 64477), (10, 64468),

Gene: Pinkman_90 Start: 64616, Stop: 64395, Start Num: 4

Candidate Starts for Pinkman_90:

(Start: 4 @64616 has 260 MA's), (5, 64607), (7, 64583), (9, 64550), (10, 64541),

Gene: Pipsqueak_88 Start: 64229, Stop: 64008, Start Num: 4

Candidate Starts for Pipsqueak_88:

(Start: 4 @64229 has 260 MA's), (5, 64220), (7, 64196), (9, 64163), (10, 64154),

Gene: Placalicious_89 Start: 65262, Stop: 65041, Start Num: 4

Candidate Starts for Placalicious_89:

(Start: 4 @65262 has 260 MA's), (5, 65253), (7, 65229), (9, 65196), (10, 65187),

Gene: Plmatters_88 Start: 64217, Stop: 63996, Start Num: 4

Candidate Starts for Plmatters_88:

(Start: 4 @64217 has 260 MA's), (5, 64208), (7, 64184), (9, 64151), (10, 64142),

Gene: Podrick_89 Start: 64305, Stop: 64084, Start Num: 4

Candidate Starts for Podrick_89:

(Start: 4 @64305 has 260 MA's), (5, 64296), (7, 64272), (9, 64239), (10, 64230),

Gene: Pops_88 Start: 64407, Stop: 64186, Start Num: 4

Candidate Starts for Pops_88:

(Start: 4 @64407 has 260 MA's), (5, 64398), (7, 64374), (9, 64341), (10, 64332),

Gene: Potter_85 Start: 64226, Stop: 64005, Start Num: 4

Candidate Starts for Potter_85:

(Start: 4 @64226 has 260 MA's), (5, 64217), (7, 64193), (9, 64160), (10, 64151),

Gene: Prickles_92 Start: 64595, Stop: 64374, Start Num: 4

Candidate Starts for Prickles_92:

(Start: 4 @64595 has 260 MA's), (5, 64586), (7, 64562), (9, 64529), (10, 64520),

Gene: ProfessorX_89 Start: 64263, Stop: 64042, Start Num: 4

Candidate Starts for ProfessorX_89:

(Start: 4 @64263 has 260 MA's), (5, 64254), (7, 64230), (9, 64197), (10, 64188),

Gene: Puhltonio_87 Start: 64500, Stop: 64279, Start Num: 4

Candidate Starts for Puhltonio_87:

(Start: 4 @64500 has 260 MA's), (5, 64491), (7, 64467), (9, 64434), (10, 64425),

Gene: QueenBeane_91 Start: 64549, Stop: 64328, Start Num: 4

Candidate Starts for QueenBeane_91:

(Start: 4 @64549 has 260 MA's), (5, 64540), (7, 64516), (9, 64483), (10, 64474),

Gene: Quisquilliae_93 Start: 64560, Stop: 64339, Start Num: 4

Candidate Starts for Quisquilliae_93:

(Start: 4 @64560 has 260 MA's), (5, 64551), (7, 64527), (9, 64494), (10, 64485),

Gene: RedMaple_90 Start: 65163, Stop: 64942, Start Num: 4

Candidate Starts for RedMaple_90:

(Start: 4 @65163 has 260 MA's), (5, 65154), (7, 65130), (9, 65097), (10, 65088),

Gene: Ricotta_91 Start: 64245, Stop: 64024, Start Num: 4

Candidate Starts for Ricotta_91:

(Start: 4 @64245 has 260 MA's), (5, 64236), (7, 64212), (9, 64179), (10, 64170),

Gene: Riggan_92 Start: 64730, Stop: 64509, Start Num: 4

Candidate Starts for Riggan_92:

(Start: 4 @64730 has 260 MA's), (5, 64721), (7, 64697), (9, 64664), (10, 64655),

Gene: Robyn_93 Start: 64997, Stop: 64755, Start Num: 4

Candidate Starts for Robyn_93:

(Start: 4 @64997 has 260 MA's), (5, 64988), (7, 64964), (9, 64931), (10, 64922), (18, 64850),

Gene: Roliet_88 Start: 63590, Stop: 63369, Start Num: 4

Candidate Starts for Roliet_88:

(Start: 4 @63590 has 260 MA's), (5, 63581), (7, 63557), (9, 63524), (10, 63515),

Gene: Roscoe_90 Start: 64850, Stop: 64629, Start Num: 4

Candidate Starts for Roscoe_90:

(Start: 4 @64850 has 260 MA's), (5, 64841), (7, 64817), (9, 64784), (10, 64775),

Gene: Roy17_88 Start: 63955, Stop: 63734, Start Num: 4

Candidate Starts for Roy17_88:

(Start: 4 @63955 has 260 MA's), (5, 63946), (7, 63922), (9, 63889), (10, 63880),

Gene: SDcharge11_90 Start: 63883, Stop: 63662, Start Num: 4

Candidate Starts for SDcharge11_90:

(Start: 4 @63883 has 260 MA's), (5, 63874), (7, 63850), (9, 63817), (10, 63808),

Gene: Samaymay_91 Start: 64549, Stop: 64328, Start Num: 4

Candidate Starts for Samaymay_91:

(Start: 4 @64549 has 260 MA's), (5, 64540), (7, 64516), (9, 64483), (10, 64474),

Gene: SassyCat97_89 Start: 64217, Stop: 63996, Start Num: 4

Candidate Starts for SassyCat97_89:

(Start: 4 @64217 has 260 MA's), (5, 64208), (7, 64184), (9, 64151), (10, 64142),

Gene: Schueller_90 Start: 64491, Stop: 64270, Start Num: 4

Candidate Starts for Schueller_90:

(Start: 4 @64491 has 260 MA's), (5, 64482), (7, 64458), (9, 64425), (10, 64416),

Gene: Scoot17C_91 Start: 64330, Stop: 64109, Start Num: 4

Candidate Starts for Scoot17C_91:

(Start: 4 @64330 has 260 MA's), (5, 64321), (7, 64297), (9, 64264), (10, 64255),

Gene: Scrick_90 Start: 64231, Stop: 64010, Start Num: 4

Candidate Starts for Scrick_90:

(Start: 4 @64231 has 260 MA's), (5, 64222), (7, 64198), (9, 64165), (10, 64156),

Gene: Selr12_92 Start: 64272, Stop: 64051, Start Num: 4

Candidate Starts for Selr12_92:

(Start: 4 @64272 has 260 MA's), (5, 64263), (7, 64239), (9, 64206), (10, 64197),

Gene: Serendipity_90 Start: 64703, Stop: 64482, Start Num: 4

Candidate Starts for Serendipity_90:

(Start: 4 @64703 has 260 MA's), (5, 64694), (7, 64670), (9, 64637), (10, 64628),

Gene: Serpentine_0092 Start: 64784, Stop: 64563, Start Num: 4
Candidate Starts for Serpentine_0092:
(Start: 4 @64784 has 260 MA's), (5, 64775), (7, 64751), (9, 64718), (10, 64709),

Gene: Sheila_85 Start: 63796, Stop: 63575, Start Num: 4
Candidate Starts for Sheila_85:
(Start: 4 @63796 has 260 MA's), (5, 63787), (7, 63763), (9, 63730), (10, 63721),

Gene: ShiVal_89 Start: 64254, Stop: 64033, Start Num: 4
Candidate Starts for ShiVal_89:
(Start: 4 @64254 has 260 MA's), (5, 64245), (7, 64221), (9, 64188), (10, 64179),

Gene: Sigman_90 Start: 64211, Stop: 63990, Start Num: 4
Candidate Starts for Sigman_90:
(Start: 4 @64211 has 260 MA's), (5, 64202), (7, 64178), (9, 64145), (10, 64136),

Gene: SilverBell_92 Start: 64664, Stop: 64443, Start Num: 4
Candidate Starts for SilverBell_92:
(Start: 4 @64664 has 260 MA's), (5, 64655), (7, 64631), (9, 64598), (10, 64589),

Gene: Simielle_90 Start: 64196, Stop: 63975, Start Num: 4
Candidate Starts for Simielle_90:
(Start: 4 @64196 has 260 MA's), (5, 64187), (7, 64163), (9, 64130), (10, 64121),

Gene: Skippy_91 Start: 64625, Stop: 64404, Start Num: 4
Candidate Starts for Skippy_91:
(Start: 4 @64625 has 260 MA's), (5, 64616), (7, 64592), (9, 64559), (10, 64550),

Gene: Slatt_91 Start: 64512, Stop: 64291, Start Num: 4
Candidate Starts for Slatt_91:
(Start: 4 @64512 has 260 MA's), (5, 64503), (7, 64479), (9, 64446), (10, 64437),

Gene: Soile_92 Start: 64750, Stop: 64529, Start Num: 4
Candidate Starts for Soile_92:
(Start: 4 @64750 has 260 MA's), (5, 64741), (7, 64717), (9, 64684), (10, 64675),

Gene: Solosis_89 Start: 64218, Stop: 63997, Start Num: 4
Candidate Starts for Solosis_89:
(Start: 4 @64218 has 260 MA's), (5, 64209), (7, 64185), (9, 64152), (10, 64143),

Gene: Sophia_89 Start: 64206, Stop: 63985, Start Num: 4
Candidate Starts for Sophia_89:
(Start: 4 @64206 has 260 MA's), (5, 64197), (7, 64173), (9, 64140), (10, 64131),

Gene: Soto_88 Start: 63923, Stop: 63702, Start Num: 4
Candidate Starts for Soto_88:
(Start: 4 @63923 has 260 MA's), (5, 63914), (7, 63890), (9, 63857), (10, 63848),

Gene: Spartan300_90 Start: 64468, Stop: 64247, Start Num: 4
Candidate Starts for Spartan300_90:
(Start: 4 @64468 has 260 MA's), (5, 64459), (7, 64435), (9, 64402), (10, 64393),

Gene: Squid_90 Start: 64497, Stop: 64276, Start Num: 4
Candidate Starts for Squid_90:
(Start: 4 @64497 has 260 MA's), (5, 64488), (7, 64464), (9, 64431), (10, 64422),

Gene: Squiggle_90 Start: 64225, Stop: 64004, Start Num: 4
Candidate Starts for Squiggle_90:
(Start: 4 @64225 has 260 MA's), (5, 64216), (7, 64192), (9, 64159), (10, 64150),

Gene: Struggle_91 Start: 64323, Stop: 64102, Start Num: 4
Candidate Starts for Struggle_91:
(Start: 4 @64323 has 260 MA's), (5, 64314), (7, 64290), (9, 64257), (10, 64248),

Gene: Surely_91 Start: 64788, Stop: 64567, Start Num: 4
Candidate Starts for Surely_91:
(Start: 4 @64788 has 260 MA's), (5, 64779), (7, 64755), (9, 64722), (10, 64713),

Gene: Swiphy_95 Start: 64772, Stop: 64551, Start Num: 4
Candidate Starts for Swiphy_95:
(Start: 4 @64772 has 260 MA's), (5, 64763), (7, 64739), (9, 64706), (10, 64697),

Gene: Swish_92 Start: 64634, Stop: 64413, Start Num: 4
Candidate Starts for Swish_92:
(Start: 4 @64634 has 260 MA's), (5, 64625), (7, 64601), (9, 64568), (10, 64559),

Gene: TallGrassMM_90 Start: 64283, Stop: 64062, Start Num: 4
Candidate Starts for TallGrassMM_90:
(Start: 4 @64283 has 260 MA's), (5, 64274), (7, 64250), (9, 64217), (10, 64208),

Gene: Telesworld_89 Start: 64360, Stop: 64139, Start Num: 4
Candidate Starts for Telesworld_89:
(Start: 4 @64360 has 260 MA's), (5, 64351), (7, 64327), (9, 64294), (10, 64285),

Gene: Thora_89 Start: 64737, Stop: 64516, Start Num: 4
Candidate Starts for Thora_89:
(Start: 4 @64737 has 260 MA's), (5, 64728), (7, 64704), (9, 64671), (10, 64662),

Gene: ThreeOh3D2_92 Start: 64891, Stop: 64670, Start Num: 4
Candidate Starts for ThreeOh3D2_92:
(Start: 4 @64891 has 260 MA's), (5, 64882), (7, 64858), (9, 64825), (10, 64816),

Gene: Thunderbird_91 Start: 64480, Stop: 64259, Start Num: 4
Candidate Starts for Thunderbird_91:
(Start: 4 @64480 has 260 MA's), (5, 64471), (7, 64447), (9, 64414), (10, 64405),

Gene: Timmi_89 Start: 64254, Stop: 64033, Start Num: 4
Candidate Starts for Timmi_89:
(Start: 4 @64254 has 260 MA's), (5, 64245), (7, 64221), (9, 64188), (10, 64179),

Gene: TomBombadil_91 Start: 64781, Stop: 64560, Start Num: 4
Candidate Starts for TomBombadil_91:
(Start: 4 @64781 has 260 MA's), (5, 64772), (7, 64748), (9, 64715), (10, 64706),

Gene: Tomlarah_91 Start: 65087, Stop: 64866, Start Num: 4

Candidate Starts for Tomlarah_91:

(Start: 4 @65087 has 260 MA's), (5, 65078), (7, 65054), (9, 65021), (10, 65012),

Gene: Toni_90 Start: 64683, Stop: 64462, Start Num: 4

Candidate Starts for Toni_90:

(Start: 4 @64683 has 260 MA's), (5, 64674), (7, 64650), (9, 64617), (10, 64608),

Gene: Tooj_88 Start: 63897, Stop: 63676, Start Num: 4

Candidate Starts for Tooj_88:

(Start: 4 @63897 has 260 MA's), (5, 63888), (7, 63864), (9, 63831), (10, 63822),

Gene: True_89 Start: 64230, Stop: 64009, Start Num: 4

Candidate Starts for True_89:

(Start: 4 @64230 has 260 MA's), (5, 64221), (7, 64197), (9, 64164), (10, 64155),

Gene: Trypo_91 Start: 64952, Stop: 64731, Start Num: 4

Candidate Starts for Trypo_91:

(Start: 4 @64952 has 260 MA's), (5, 64943), (7, 64919), (9, 64886), (10, 64877),

Gene: TyrionL_91 Start: 64314, Stop: 64093, Start Num: 4

Candidate Starts for TyrionL_91:

(Start: 4 @64314 has 260 MA's), (5, 64305), (7, 64281), (9, 64248), (10, 64239),

Gene: UAch1_92 Start: 64581, Stop: 64360, Start Num: 4

Candidate Starts for UAch1_92:

(Start: 4 @64581 has 260 MA's), (5, 64572), (7, 64548), (9, 64515), (10, 64506),

Gene: UncleHowie_87 Start: 63918, Stop: 63697, Start Num: 4

Candidate Starts for UncleHowie_87:

(Start: 4 @63918 has 260 MA's), (5, 63909), (7, 63885), (9, 63852), (10, 63843),

Gene: Usavi_91 Start: 65078, Stop: 64857, Start Num: 4

Candidate Starts for Usavi_91:

(Start: 4 @65078 has 260 MA's), (5, 65069), (7, 65045), (9, 65012), (10, 65003),

Gene: Vaishali24_92 Start: 64678, Stop: 64436, Start Num: 4

Candidate Starts for Vaishali24_92:

(Start: 4 @64678 has 260 MA's), (5, 64669), (7, 64645), (9, 64612), (10, 64603), (18, 64531),

Gene: Valjean_89 Start: 64472, Stop: 64251, Start Num: 4

Candidate Starts for Valjean_89:

(Start: 4 @64472 has 260 MA's), (5, 64463), (7, 64439), (9, 64406), (10, 64397),

Gene: Vaticameos_88 Start: 62787, Stop: 62566, Start Num: 4

Candidate Starts for Vaticameos_88:

(Start: 4 @62787 has 260 MA's), (5, 62778), (7, 62754), (9, 62721), (10, 62712),

Gene: Veritas_90 Start: 64395, Stop: 64174, Start Num: 4

Candidate Starts for Veritas_90:

(Start: 4 @64395 has 260 MA's), (5, 64386), (7, 64362), (9, 64329), (10, 64320),

Gene: Virapocalypse_92 Start: 64580, Stop: 64359, Start Num: 4

Candidate Starts for Virapocalypse_92:

(Start: 4 @64580 has 260 MA's), (5, 64571), (7, 64547), (9, 64514), (10, 64505),

Gene: Virgeve_89 Start: 64199, Stop: 63978, Start Num: 4

Candidate Starts for Virgeve_89:

(Start: 4 @64199 has 260 MA's), (5, 64190), (7, 64166), (9, 64133), (10, 64124),

Gene: Vista_90 Start: 64393, Stop: 64172, Start Num: 4

Candidate Starts for Vista_90:

(Start: 4 @64393 has 260 MA's), (5, 64384), (7, 64360), (9, 64327), (10, 64318),

Gene: Vivaldi_91 Start: 64659, Stop: 64438, Start Num: 4

Candidate Starts for Vivaldi_91:

(Start: 4 @64659 has 260 MA's), (5, 64650), (7, 64626), (9, 64593), (10, 64584),

Gene: Vortex_89 Start: 64500, Stop: 64279, Start Num: 4

Candidate Starts for Vortex_89:

(Start: 4 @64500 has 260 MA's), (5, 64491), (7, 64467), (9, 64434), (10, 64425),

Gene: Wallhey_92 Start: 64501, Stop: 64280, Start Num: 4

Candidate Starts for Wallhey_92:

(Start: 4 @64501 has 260 MA's), (5, 64492), (7, 64468), (9, 64435), (10, 64426),

Gene: Waterdiva_92 Start: 64767, Stop: 64546, Start Num: 4

Candidate Starts for Waterdiva_92:

(Start: 4 @64767 has 260 MA's), (5, 64758), (7, 64734), (9, 64701), (10, 64692),

Gene: Weher20_88 Start: 64838, Stop: 64617, Start Num: 4

Candidate Starts for Weher20_88:

(Start: 4 @64838 has 260 MA's), (5, 64829), (7, 64805), (9, 64772), (10, 64763),

Gene: Windsor_91 Start: 64783, Stop: 64562, Start Num: 4

Candidate Starts for Windsor_91:

(Start: 4 @64783 has 260 MA's), (5, 64774), (7, 64750), (9, 64717), (10, 64708),

Gene: Xavier_90 Start: 64392, Stop: 64171, Start Num: 4

Candidate Starts for Xavier_90:

(Start: 4 @64392 has 260 MA's), (5, 64383), (7, 64359), (9, 64326), (10, 64317),

Gene: Yoshand_92 Start: 64617, Stop: 64396, Start Num: 4

Candidate Starts for Yoshand_92:

(Start: 4 @64617 has 260 MA's), (5, 64608), (7, 64584), (9, 64551), (10, 64542),

Gene: YouGoGlencoco_91 Start: 64507, Stop: 64286, Start Num: 4

Candidate Starts for YouGoGlencoco_91:

(Start: 4 @64507 has 260 MA's), (5, 64498), (7, 64474), (9, 64441), (10, 64432),

Gene: Zaider_92 Start: 64882, Stop: 64661, Start Num: 4

Candidate Starts for Zaider_92:

(Start: 4 @64882 has 260 MA's), (5, 64873), (7, 64849), (9, 64816), (10, 64807),

Gene: Zelda_91 Start: 64838, Stop: 64617, Start Num: 4

Candidate Starts for Zelda_91:

(Start: 4 @64838 has 260 MA's), (5, 64829), (7, 64805), (9, 64772), (10, 64763),

Gene: Zenteno07_95 Start: 66788, Stop: 66540, Start Num: 6

Candidate Starts for Zenteno07_95:

(Start: 6 @66788 has 5 MA's), (14, 66713), (22, 66587), (23, 66584),

Gene: Zonia_91 Start: 64949, Stop: 64728, Start Num: 4

Candidate Starts for Zonia_91:

(Start: 4 @64949 has 260 MA's), (5, 64940), (7, 64916), (9, 64883), (10, 64874),