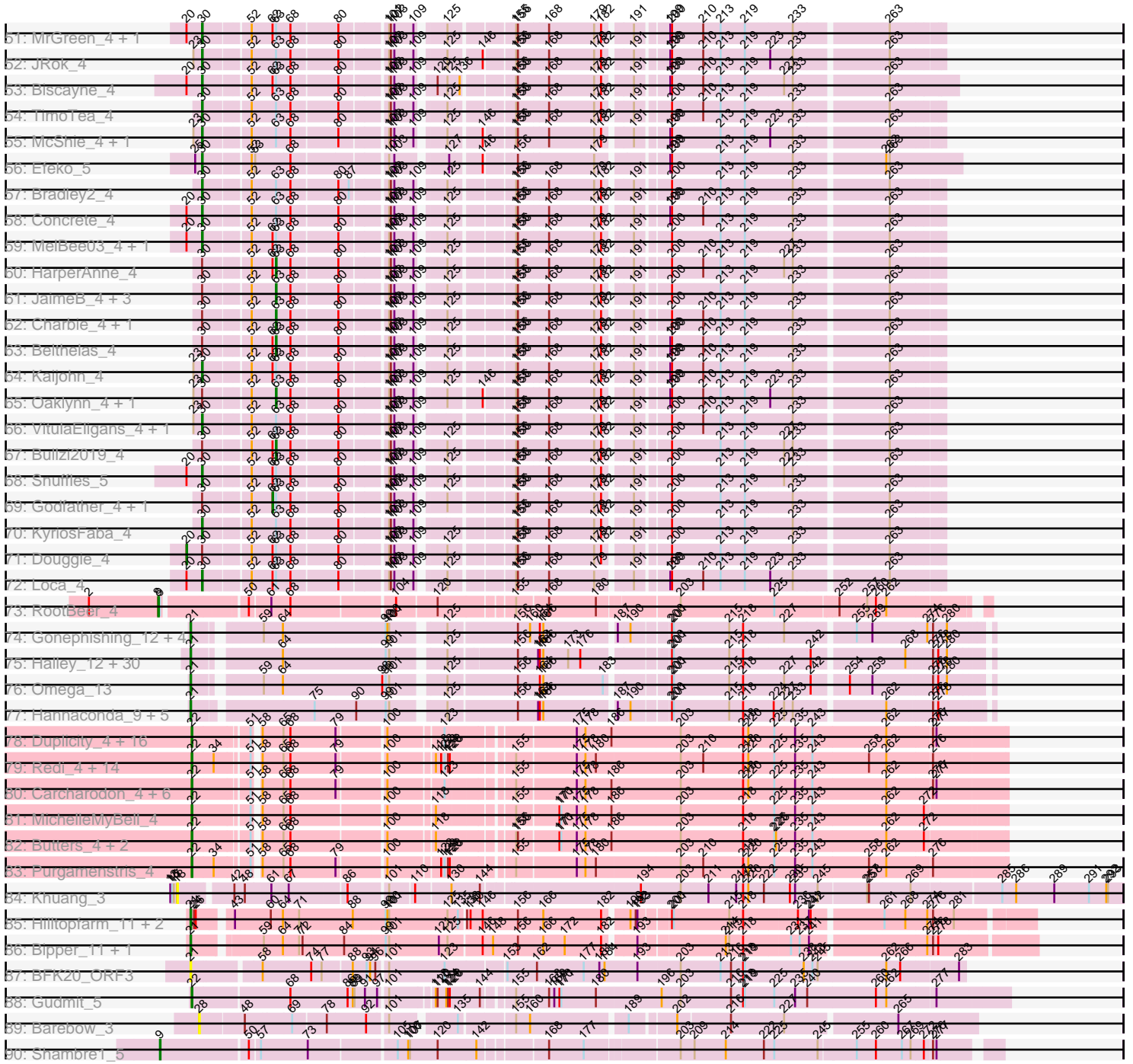


Pham 196247



Note: Tracks are now grouped by subcluster and scaled. Switching in subcluster is indicated by changes in track color. Track scale is now set by default to display the region 30 bp upstream of start 1 to 30 bp downstream of the last possible start. If this default region is judged to be packed too tightly with annotated starts, the track will be further scaled to only show that region of the ORF with annotated starts. This action will be indicated by adding "Zoomed" to the title. For starts, yellow indicates the location of called starts comprised solely of Glimmer/GeneMark auto-annotations, green indicates the location of called starts with at least 1 manual gene annotation.

Pham 196247 Report

This analysis was run 12/09/24 on database version 580.

WARNING: Pham size does not match number of genes in report. Either unphamerated genes have been added (by you) or starterator has removed genes due to invalid start codon.

Pham number 196247 has 277 members, 21 are drafts.

Phages represented in each track:

- Track 1 : phiBT1_34
- Track 2 : Samora_3
- Track 3 : Lilbooboo_3
- Track 4 : Euratis_3
- Track 5 : Vash_3
- Track 6 : Shawty_3
- Track 7 : TG1_3
- Track 8 : RemusLoopin_3
- Track 9 : Heather_3
- Track 10 : Sebastisaurus_3
- Track 11 : B3_4
- Track 12 : E1_4, Anatole_4
- Track 13 : Trine_3
- Track 14 : Widow_3
- Track 15 : Mahdia_3
- Track 16 : Morrissey_3
- Track 17 : Puppies_3
- Track 18 : Gustav_3
- Track 19 : Upyo_3
- Track 20 : Huffy_10, TZGordon_10, DinoDaryn_10
- Track 21 : TinaLin_11, Banquo_12
- Track 22 : Vendetta_8, Goib_9, Splinter_8
- Track 23 : Gspu1_6
- Track 24 : Dardanus_10
- Track 25 : Schmidt_6
- Track 26 : Catfish_7
- Track 27 : Pepperoni_4
- Track 28 : Lton_4
- Track 29 : OneDirection_4
- Track 30 : Faith5x5_4
- Track 31 : Moosehead_4
- Track 32 : Ghobes_2
- Track 33 : Frizzle_2

- Track 34 : Sapo_2
- Track 35 : Archimedes_2
- Track 36 : Santhid_4, Tarzan_4
- Track 37 : Jojo24_4
- Track 38 : Reyja_5
- Track 39 : Hibiscus_4, DonkeyMan_4
- Track 40 : Heinz_4
- Track 41 : BonaeVitae_4, Naby_4
- Track 42 : Hulk_4
- Track 43 : Niffler_4, Slizam_4, Miaurora_4, Lunatic_4, Trireme_4, TomBrady12_4, JooneeDee_4, Clownery_4, Nobel_4, Cazares_4, PuffyCat_4, Stem_4, Yami_4, TinyTruffula_4, Bintii_4
- Track 44 : Ekko14_4, Elspeth_4, Noelani_4
- Track 45 : SeaWolves_4, Majesty_4, Alucard_4, Goobery_4, Picnic_4, Erin_4, Baine_4, Minima_4, BurtonThePup_4, Lola20_4, EdElric_4, ManAs_4, LemonPepper_4, Jahseh_4, Eightball_4, Horacetta_4, Sara_4, Gabbspett_4, Gillker_4, Owens_4, Gardevoir_4, Dooby_4, Aztec_4, Cayde6_4, Jannah_4, Dongwon_4, TeddyBoy_4, JoBros_4, LionelHutz_4, Witch_4, NeumannU_4, Slentz_4, Yasuo_4, GoldenBlanche_4, Puddles3_4, PaoPu_4, BinkBonk_4, Anseraureola_4, Yubaba_4, BarBear_4, Pondwater_4, YertPhresh_4, Octopus_4, Chatham_4, Danimal_4, Scrunchy_4, Ciel_4
- Track 46 : Luxx_4
- Track 47 : KillerTomato_4, Bri160_4, BoomRoasted_4
- Track 48 : Namsahir_4, Publix_4, PoRanda_4, MirimarMandM_4, Upsilon_4
- Track 49 : Scamander_4, RoscoWindex_4, Avvas_4, SantasSleigh_4, MasterPitts_4, Otwor_4, DaftyDuck_4, LaviMo_4, Burgy_4, Danno_4, Cheesecake_4, Josuke_4, Sage7_4, Rhysand_4, Aries55_4, Vanisius_4
- Track 50 : Livingwater_4, Quaker_4, Sippinontea_4, Bodhi17_4, KayPaulus_4, Wolfpack_4
- Track 51 : MrGreen_4, Leafy_4
- Track 52 : JRok_4
- Track 53 : Biscayne_4
- Track 54 : TimoTea_4
- Track 55 : McShie_4, BrokMonster_4
- Track 56 : Efeko_5
- Track 57 : Bradley2_4
- Track 58 : Concrete_4
- Track 59 : MelBee03_4, Kevanna_4
- Track 60 : HarperAnne_4
- Track 61 : JaimeB_4, Rhogar_4, Hernandez44_4, Astro16_4
- Track 62 : Charbie_4, Maneater_4
- Track 63 : Belthelas_4
- Track 64 : Kaijohn_4
- Track 65 : Oaklynn_4, Azizam_4
- Track 66 : VitulaEligans_4, Jerky_4
- Track 67 : Bullzi2019_4
- Track 68 : Snuffles_5
- Track 69 : Godfather_4, Kojax4_4
- Track 70 : KyriosFaba_4
- Track 71 : Duggie_4
- Track 72 : Loca_4
- Track 73 : RootBeer_4
- Track 74 : Gonephishing_12, Ariel_11, LittleE_11, Squint_12, Lucky2013_12

- Track 75 : Halley_12, Klein_12, BAKA_8, Duke13_8, Bombitas_9, Phoebus_12, Dove_9, Optimus_9, Dallas_11, Ejimix_13, Minerva_11, Schatzie_10, Pound_11, EricMillard_12, Beem_12, DmpstrDiver_11, Odette_11, Hughesyang_11, JuicyJay_13, Bobby_13, Bagrid_10, Zelink_12, NihilNomen_11, HokkenD_7, Yeet_10, Kalah2_12, Wanda_12, Thibault_8, ThreeRngTarjay_11, Redno2_11, Constella_7
- Track 76 : Omega_13
- Track 77 : Hannaconda_9, Porcelain_12, Courthouse_12, KashFlow_6, Superphikiman_12, MiaZeal_12
- Track 78 : Duplicity_4, Bosection6_4, Parmesanjohn_4, Gex_4, Schnauzer_4, Journey_4, Tapioca_4, Magsby_4, Aggie_4, Philonius_4, Xerxes_4, Charlie_4, Silvy_4, Pipsqueaks_4, Smurph_4, Chewbacca_4, Melville_4
- Track 79 : Redi_4, Jamie19_4, Hanako_4, Phrann_4, Raymond7_4, Shweta_4, SkinnyPete_4, Nenae_4, ShrimpFriedEgg_4, PhancyPhin_4, Snekmaggon_4, Panchino_4, Rebel_4, SpongeBob_4, BabeRuth_4
- Track 80 : Carcharodon_4, Phloss_4, Scitech_4, Andies_4, Fulbright_4, Xeno_4, Silvafighter_4
- Track 81 : MichelleMyBell_4
- Track 82 : Butters_4, Rubeelu_4, Kevin1_4
- Track 83 : Purgamenstris_4
- Track 84 : Khuang_3
- Track 85 : Hilltopfarm_11, AuntGwenStacy_11, Typha_11
- Track 86 : Bipper_11, Cracklewink_11
- Track 87 : BFK20_ORF3
- Track 88 : Gudmit_5
- Track 89 : Barebow_3
- Track 90 : Shambre1_5

Summary of Final Annotations (See graph section above for start numbers):

The start number called the most often in the published annotations is 30, it was called in 109 of the 256 non-draft genes in the pham.

Genes that call this "Most Annotated" start:

- Alucard_4, Anseraureola_4, Aries55_4, Avvas_4, Aztec_4, Baine_4, BarBear_4, BinkBonk_4, Bintii_4, Biscayne_4, Bodhi17_4, BonaeVitae_4, BoomRoasted_4, Bradley2_4, Bri160_4, BrokMonster_4, Burgy_4, BurtonThePup_4, Cayde6_4, Cazares_4, Chatham_4, Cheesecake_4, Ciel_4, Clownery_4, Concrete_4, DaftyDuck_4, Danimal_4, Danno_4, Dongwon_4, Dooby_4, EdElric_4, Efeko_5, Eightball_4, Ekko14_4, Elspeth_4, Erin_4, Gabbspett_4, Gardevoir_4, Gillker_4, GoldenBlanche_4, Goobery_4, Horacetta_4, JRok_4, Jahseh_4, Jannah_4, Jerky_4, JoBros_4, JooneeDee_4, Josuke_4, Kaijohn_4, KayPaulus_4, Kevanna_4, KillerTomato_4, KyriosFaba_4, LaviMo_4, Leafy_4, LemonPepper_4, LionelHutz_4, Livingwater_4, Loca_4, Lola20_4, Lunatic_4, Majesty_4, ManAs_4, MasterPitts_4, McShie_4, MelBee03_4, Miaurora_4, Minima_4, MirimarMandM_4, MrGreen_4, Naby_4, Namsahir_4, NeumannU_4, Niffler_4, Nobel_4, Noelani_4, Octopus_4, Otwor_4, Owens_4, PaoPu_4, Picnic_4, PoRanda_4, Pondwater_4, Publix_4, Puddles3_4, PuffyCat_4, Quaker_4, Rhysand_4, RoscoWindex_4, Sage7_4, SantasSleigh_4, Sara_4, Scamander_4, Scrunchy_4, SeaWolves_4, Sippinontea_4, Slentz_4, Slizam_4, Snuffles_5, Stem_4, TeddyBoy_4, TimoTea_4, TinyTruffula_4,

TomBrady12_4, Trireme_4, Upsilon_4, Vanisius_4, VitulaEligans_4, Witch_4, Wolfpack_4, Yami_4, Yasuo_4, YertPhresh_4, Yubaba_4,

Genes that have the "Most Annotated" start but do not call it:

- Astro16_4, Azizam_4, Belthelas_4, Bullzi2019_4, Charbie_4, Douggie_4, Godfather_4, HarperAnne_4, Hernandez44_4, Hulk_4, JaimeB_4, Kojax4_4, Luxx_4, Maneater_4, Oaklynn_4, Rhogar_4,

Genes that do not have the "Most Annotated" start:

- Aggie_4, Anatole_4, Andies_4, Archimedes_2, Ariel_11, AuntGwenStacy_11, B3_4, BAKA_8, BFK20_ORF3, BabeRuth_4, Bagrid_10, Banquo_12, Barebow_3, Beem_12, Bipper_11, Bobby_13, Bombitas_9, Bosection6_4, Butters_4, Carcharodon_4, Catfish_7, Charlie_4, Chewbacca_4, Constella_7, Courthouse_12, Cracklewink_11, Dallas_11, Dardanus_10, DinoDaryn_10, DmpstrDiver_11, DonkeyMan_4, Dove_9, Duke13_8, Duplicity_4, E1_4, Ejimix_13, EricMillard_12, Euratis_3, Faith5x5_4, Frizzle_2, Fulbright_4, Gex_4, Ghobes_2, Goib_9, Gonephishing_12, Gspu1_6, Gudmit_5, Gustav_3, Halley_12, Hanako_4, Hannaconda_9, Heather_3, Heinz_4, Hibiscus_4, Hilltopfarm_11, HokkenD_7, Huffy_10, Hughesyang_11, Jamie19_4, Jojo24_4, Journey_4, JuicyJay_13, Kalah2_12, KashFlow_6, Kevin1_4, Khuang_3, Klein_12, Lilbooboo_3, LittleE_11, Lton_4, Lucky2013_12, Magsby_4, Mahdia_3, Melville_4, MiaZeal_12, MichelleMyBell_4, Minerva_11, Moosehead_4, Morrissey_3, Nenae_4, NihilNomen_11, Odette_11, Omega_13, OneDirection_4, Optimus_9, Panchino_4, Parmesanjohn_4, Pepperoni_4, PhancyPhin_4, Philonius_4, Phloss_4, Phoebus_12, Phrann_4, Pipsqueaks_4, Porcelain_12, Pound_11, Puppies_3, Purgamenstris_4, Raymond7_4, Rebel_4, Redi_4, Redno2_11, RemusLoopin_3, Reyja_5, RootBeer_4, Rubeelu_4, Samora_3, Santhid_4, Sapo_2, Schatzie_10, Schmidt_6, Schnauzer_4, Scitech_4, Sebastisaurus_3, Shambre1_5, Shawty_3, ShrimpFriedEgg_4, Shweta_4, Silvafighter_4, Silvy_4, SkinnyPete_4, Smurph_4, Snekmaggon_4, Splinter_8, SpongeBob_4, Squint_12, Superphikiman_12, TG1_3, TZGordon_10, Tapioca_4, Tarzan_4, Thibault_8, ThreeRngTarjay_11, TinaLin_11, Trine_3, Typha_11, Upyo_3, Vash_3, Vendetta_8, Wanda_12, Widow_3, Xeno_4, Xerxes_4, Yeet_10, Zelink_12, phiBT1_34,

Summary by start number:

Start 8:

- Found in 1 of 277 (0.4%) of genes in pham
- Manual Annotations of this start: 1 of 256
- Called 100.0% of time when present
- Phage (with cluster) where this start called: RootBeer_4 (FA),

Start 9:

- Found in 2 of 277 (0.7%) of genes in pham
- Manual Annotations of this start: 1 of 256
- Called 50.0% of time when present
- Phage (with cluster) where this start called: Shambre1_5 (singleton),

Start 18:

- Found in 1 of 277 (0.4%) of genes in pham
- No Manual Annotations of this start.
- Called 100.0% of time when present
- Phage (with cluster) where this start called: Khuang_3 (UNK),

Start 19:

- Found in 9 of 277 (3.2%) of genes in pham
- Manual Annotations of this start: 8 of 256
- Called 88.9% of time when present
- Phage (with cluster) where this start called: Banquo_12 (CU1), DinoDaryn_10 (CU1), Goib_9 (CU1), Huff_10 (CU1), Splinter_8 (CU1), TZGordon_10 (CU1), TinaLin_11 (CU1), Vendetta_8 (CU1),

Start 20:

- Found in 19 of 277 (6.9%) of genes in pham
- Manual Annotations of this start: 1 of 256
- Called 5.3% of time when present
- Phage (with cluster) where this start called: Douggie_4 (EE),

Start 21:

- Found in 82 of 277 (29.6%) of genes in pham
- Manual Annotations of this start: 66 of 256
- Called 90.2% of time when present
- Phage (with cluster) where this start called: Archimedes_2 (DA), Ariel_11 (J), AuntGwenStacy_11 (Y), BAKA_8 (J), BFK20_ORF3 (singleton), Bagrid_10 (J), Beem_12 (J), Bipper_11 (Y), Bobby_13 (J), Bombitas_9 (J), Catfish_7 (CU5), Constella_7 (J), Courthouse_12 (J), Cracklewink_11 (Y), Dallas_11 (J), Dardanus_10 (CU3), DmpstrDiver_11 (J), Dove_9 (J), Duke13_8 (J), Ejimix_13 (J), EricMillard_12 (J), Euratis_3 (BB1), Frizzle_2 (DA), Ghobes_2 (DA), Gonephishing_12 (J), Gsput1_6 (CU2), Gustav_3 (CD), Halley_12 (J), Hannaconda_9 (J), Heather_3 (BB2), Hilltopfarm_11 (Y), HokkenD_7 (J), Hughesyang_11 (J), JuicyJay_13 (J), Kalah2_12 (J), KashFlow_6 (J), Klein_12 (J), Lilbooboo_3 (BB1), LittleE_11 (J), Lucky2013_12 (J), Mahdia_3 (CD), MiaZeal_12 (J), Minerva_11 (J), Morrissey_3 (CD), NihilNomen_11 (J), Odette_11 (J), Omega_13 (J), Optimus_9 (J), Phoebus_12 (J), Porcelain_12 (J), Pound_11 (J), Puppies_3 (CD), Redno2_11 (J), RemusLoopin_3 (BB2), Samora_3 (BB1), Sapo_2 (DA), Schatzie_10 (J), Schmidt_6 (CU4), Sebastisaurus_3 (BB2), Shawty_3 (BB1), Squint_12 (J), Superphikiman_12 (J), TG1_3 (BB1), Thibault_8 (J), ThreeRngTarjay_11 (J), Trine_3 (CD), Typha_11 (Y), Upyo_3 (CD), Vash_3 (BB1), Wanda_12 (J), Widow_3 (CD), Yeet_10 (J), Zelink_12 (J), phiBT1_34 (BB1),

Start 22:

- Found in 59 of 277 (21.3%) of genes in pham
- Manual Annotations of this start: 51 of 256
- Called 94.9% of time when present
- Phage (with cluster) where this start called: Aggie_4 (N), Andies_4 (N), BabeRuth_4 (N), Bosection6_4 (N), Butters_4 (N), Carcharodon_4 (N), Charlie_4 (N), Chewbacca_4 (N), DonkeyMan_4 (DY), Duplicity_4 (N), Faith5x5_4 (CZ6), Fulbright_4 (N), Gex_4 (N), Gudmit_5 (singleton), Hanako_4 (N), Heinz_4 (DY), Hibiscus_4 (DY), Jamie19_4 (N), Journey_4 (N), Kevin1_4 (N), Lton_4 (CZ), Magsby_4 (N), Melville_4 (N), MichelleMyBell_4 (N), Moosehead_4 (CZ6), Nenae_4 (N), OneDirection_4 (CZ6), Panchino_4 (N), Parmesanjohn_4 (N), Pepperoni_4 (CZ), PhancyPhin_4 (N), Philonius_4 (N), Phloss_4 (N), Phrann_4 (N), Pipsqueaks_4 (N), Purgamenstris_4 (N), Raymond7_4 (N), Rebel_4 (N), Redi_4 (N), Reyja_5 (DY), Rubeelu_4 (N), Santhid_4 (DY), Schnauzer_4 (N), Scitech_4 (N), ShrimpFriedEgg_4 (N), Shweta_4 (N), Silvafighter_4 (N), Silvy_4 (N), SkinnyPete_4 (N), Smurph_4 (N), Snekmaggon_4 (N), SpongeBob_4 (N), Tapioca_4 (N), Tarzan_4 (DY), Xeno_4

(N), Xerxes_4 (N),

Start 23:

- Found in 17 of 277 (6.1%) of genes in pham
- Manual Annotations of this start: 1 of 256
- Called 5.9% of time when present
- Phage (with cluster) where this start called: Jojo24_4 (DY),

Start 28:

- Found in 1 of 277 (0.4%) of genes in pham
- No Manual Annotations of this start.
- Called 100.0% of time when present
- Phage (with cluster) where this start called: Barebow_3 (singleton),

Start 30:

- Found in 131 of 277 (47.3%) of genes in pham
- Manual Annotations of this start: 109 of 256
- Called 87.8% of time when present
- Phage (with cluster) where this start called: Alucard_4 (EE), Anseraureola_4 (EE), Aries55_4 (EE), Avvas_4 (EE), Aztec_4 (EE), Baine_4 (EE), BarBear_4 (EE), BinkBonk_4 (EE), Bintii_4 (EE), Biscayne_4 (EE), Bodhi17_4 (EE), BonaeVitae_4 (EE), BoomRoasted_4 (EE), Bradley2_4 (EE), Bri160_4 (EE), BrokMonster_4 (EE), Burgy_4 (EE), BurtonThePup_4 (EE), Cayde6_4 (EE), Cazares_4 (EE), Chatham_4 (EE), Cheesecake_4 (EE), Ciel_4 (EE), Clownery_4 (EE), Concrete_4 (EE), DaftyDuck_4 (EE), Danimal_4 (EE), Danno_4 (EE), Dongwon_4 (EE), Dooby_4 (EE), EdElric_4 (EE), Efeko_5 (EE), Eightball_4 (EE), Ekko14_4 (EE), Elspeth_4 (EE), Erin_4 (EE), Gabbspett_4 (EE), Gardevoir_4 (EE), Gillker_4 (EE), GoldenBlanche_4 (EE), Goobery_4 (EE), Horacetta_4 (EE), JRok_4 (EE), Jahseh_4 (EE), Jannah_4 (EE), Jerky_4 (EE), JoBros_4 (EE), JooneeDee_4 (EE), Josuke_4 (EE), Kaijohn_4 (EE), KayPaulus_4 (EE), Kevanna_4 (EE), KillerTomato_4 (EE), KyriosFaba_4 (EE), LaviMo_4 (EE), Leafy_4 (EE), LemonPepper_4 (EE), LionelHutz_4 (EE), Livingwater_4 (EE), Loca_4 (EE), Lola20_4 (EE), Lunatic_4 (EE), Majesty_4 (EE), ManAs_4 (EE), MasterPitts_4 (EE), McShie_4 (EE), MelBee03_4 (EE), Miaurora_4 (EE), Minima_4 (EE), MirimarMandM_4 (EE), MrGreen_4 (EE), Naby_4 (EE), Namsahir_4 (EE), NeumannU_4 (EE), Niffler_4 (EE), Nobel_4 (EE), Noelani_4 (EE), Octopus_4 (EE), Otwor_4 (EE), Owens_4 (EE), PaoPu_4 (EE), Picnic_4 (EE), PoRanda_4 (EE), Pondwater_4 (EE), Publix_4 (EE), Puddles3_4 (EE), PuffyCat_4 (EE), Quaker_4 (EE), Rhysand_4 (EE), RoscoWindex_4 (EE), Sage7_4 (EE), SantasSleigh_4 (EE), Sara_4 (EE), Scamander_4 (EE), Scrunchy_4 (EE), SeaWolves_4 (EE), Sippinontea_4 (EE), Slentz_4 (EE), Slizam_4 (EE), Snuffles_5 (EE), Stem_4 (EE), TeddyBoy_4 (EE), TimoTea_4 (EE), TinyTruffula_4 (EE), TomBrady12_4 (EE), Trireme_4 (EE), Upsilon_4 (EE), Vanisius_4 (EE), VitulaEligans_4 (EE), Witch_4 (EE), Wolfpack_4 (EE), Yami_4 (EE), Yasuo_4 (EE), YertPhresh_4 (EE), Yubaba_4 (EE),

Start 32:

- Found in 3 of 277 (1.1%) of genes in pham
- Manual Annotations of this start: 3 of 256
- Called 100.0% of time when present
- Phage (with cluster) where this start called: Anatole_4 (BV), B3_4 (BV), E1_4 (BV),

Start 62:

- Found in 66 of 277 (23.8%) of genes in pham

- Manual Annotations of this start: 2 of 256
- Called 3.0% of time when present
- Phage (with cluster) where this start called: Godfather_4 (EE), Kojax4_4 (EE),

Start 63:

- Found in 130 of 277 (46.9%) of genes in pham
- Manual Annotations of this start: 13 of 256
- Called 10.0% of time when present
- Phage (with cluster) where this start called: Astro16_4 (EE), Azizam_4 (EE), Belthelas_4 (EE), Bullzi2019_4 (EE), Charbie_4 (EE), HarperAnne_4 (EE), Hernandez44_4 (EE), Hulk_4 (EE), JaimeB_4 (EE), Luxx_4 (EE), Maneater_4 (EE), Oaklynn_4 (EE), Rhogar_4 (EE),

Summary by clusters:

There are 20 clusters represented in this pham: CU5, UNK, DA, CU2, CU1, CZ, EE, J, CZ6, singleton, N, FA, BV, CU4, DY, Y, CU3, CD, BB2, BB1,

Info for manual annotations of cluster BB1:

- Start number 21 was manually annotated 6 times for cluster BB1.

Info for manual annotations of cluster BB2:

- Start number 21 was manually annotated 3 times for cluster BB2.

Info for manual annotations of cluster BV:

- Start number 32 was manually annotated 3 times for cluster BV.

Info for manual annotations of cluster CD:

- Start number 21 was manually annotated 7 times for cluster CD.

Info for manual annotations of cluster CU1:

- Start number 19 was manually annotated 8 times for cluster CU1.

Info for manual annotations of cluster CU3:

- Start number 21 was manually annotated 1 time for cluster CU3.

Info for manual annotations of cluster CU4:

- Start number 21 was manually annotated 1 time for cluster CU4.

Info for manual annotations of cluster CU5:

- Start number 21 was manually annotated 1 time for cluster CU5.

Info for manual annotations of cluster CZ:

- Start number 22 was manually annotated 1 time for cluster CZ.

Info for manual annotations of cluster CZ6:

- Start number 22 was manually annotated 3 times for cluster CZ6.

Info for manual annotations of cluster DA:

- Start number 21 was manually annotated 3 times for cluster DA.

Info for manual annotations of cluster DY:

- Start number 22 was manually annotated 4 times for cluster DY.
- Start number 23 was manually annotated 1 time for cluster DY.

Info for manual annotations of cluster EE:

- Start number 20 was manually annotated 1 time for cluster EE.
- Start number 30 was manually annotated 109 times for cluster EE.
- Start number 62 was manually annotated 2 times for cluster EE.
- Start number 63 was manually annotated 13 times for cluster EE.

Info for manual annotations of cluster FA:

- Start number 8 was manually annotated 1 time for cluster FA.

Info for manual annotations of cluster J:

- Start number 21 was manually annotated 40 times for cluster J.

Info for manual annotations of cluster N:

- Start number 22 was manually annotated 42 times for cluster N.

Info for manual annotations of cluster Y:

- Start number 21 was manually annotated 4 times for cluster Y.

Gene Information:

Gene: Aggie_4 Start: 2249, Stop: 3538, Start Num: 22

Candidate Starts for Aggie_4:

(Start: 22 @2249 has 51 MA's), (51, 2336), (58, 2342), (65, 2378), (68, 2390), (79, 2468), (100, 2543), (123, 2630), (175, 2825), (178, 2840), (186, 2882), (203, 2996), (218, 3101), (220, 3110), (225, 3155), (235, 3191), (243, 3221), (262, 3344), (276, 3416), (277, 3422),

Gene: Alucard_4 Start: 2660, Stop: 3787, Start Num: 30

Candidate Starts for Alucard_4:

(Start: 30 @2660 has 109 MA's), (52, 2729), (Start: 63 @2771 has 13 MA's), (68, 2795), (80, 2870), (101, 2942), (102, 2945), (103, 2951), (109, 2984), (125, 3020), (155, 3113), (156, 3116), (168, 3167), (179, 3245), (182, 3257), (191, 3299), (200, 3350), (213, 3431), (219, 3473), (233, 3554), (263, 3704),

Gene: Anatole_4 Start: 2800, Stop: 4233, Start Num: 32

Candidate Starts for Anatole_4:

(5, 2701), (10, 2725), (Start: 32 @2800 has 3 MA's), (35, 2809), (41, 2842), (46, 2851), (55, 2884), (67, 2938), (72, 2962), (74, 2977), (77, 2995), (93, 3067), (101, 3097), (130, 3199), (144, 3244), (149, 3262), (154, 3289), (165, 3328), (167, 3334), (168, 3343), (169, 3352), (173, 3376), (193, 3490), (203, 3559), (205, 3565), (212, 3610), (218, 3664), (225, 3718), (230, 3745), (247, 3802), (257, 3871), (258, 3874), (262, 3901), (273, 3964), (274, 3967), (277, 3979), (284, 4045), (286, 4102), (288, 4150), (290, 4204),

Gene: Andies_4 Start: 2249, Stop: 3538, Start Num: 22

Candidate Starts for Andies_4:

(Start: 22 @2249 has 51 MA's), (51, 2336), (58, 2342), (65, 2378), (68, 2390), (79, 2468), (100, 2543), (123, 2630), (155, 2726), (175, 2825), (178, 2840), (186, 2882), (203, 2996), (218, 3101), (220, 3110), (225, 3155), (235, 3191), (243, 3221), (262, 3344), (276, 3416), (277, 3422),

Gene: Anseraureola_4 Start: 2683, Stop: 3810, Start Num: 30

Candidate Starts for Anseraureola_4:

(Start: 30 @2683 has 109 MA's), (52, 2752), (Start: 63 @2794 has 13 MA's), (68, 2818), (80, 2893), (101, 2965), (102, 2968), (103, 2974), (109, 3007), (125, 3043), (155, 3136), (156, 3139), (168, 3190), (179, 3268), (182, 3280), (191, 3322), (200, 3373), (213, 3454), (219, 3496), (233, 3577), (263, 3727),

Gene: Archimedes_2 Start: 1796, Stop: 3112, Start Num: 21

Candidate Starts for Archimedes_2:

(Start: 21 @1796 has 66 MA's), (101, 2105), (106, 2138), (131, 2213), (144, 2258), (161, 2333), (167, 2351), (168, 2360), (203, 2582), (214, 2657), (216, 2666), (218, 2687), (220, 2696), (225, 2741), (242, 2804), (244, 2813), (253, 2855), (257, 2897),

Gene: Ariel_11 Start: 4635, Stop: 5864, Start Num: 21

Candidate Starts for Ariel_11:

(Start: 21 @4635 has 66 MA's), (59, 4728), (64, 4761), (99, 4932), (100, 4935), (101, 4938), (125, 5016), (156, 5127), (160, 5148), (164, 5163), (166, 5169), (187, 5283), (190, 5304), (200, 5361), (201, 5364), (215, 5457), (218, 5481), (227, 5547), (255, 5658), (259, 5685), (274, 5769), (276, 5778), (280, 5802),

Gene: Aries55_4 Start: 2671, Stop: 3798, Start Num: 30

Candidate Starts for Aries55_4:

(Start: 30 @2671 has 109 MA's), (52, 2740), (Start: 62 @2776 has 2 MA's), (Start: 63 @2782 has 13 MA's), (68, 2806), (80, 2881), (101, 2953), (102, 2956), (103, 2962), (109, 2995), (125, 3031), (155, 3124), (156, 3127), (168, 3178), (179, 3256), (182, 3268), (191, 3310), (200, 3361), (213, 3442), (219, 3484), (233, 3565), (263, 3715),

Gene: Astro16_4 Start: 2782, Stop: 3798, Start Num: 63

Candidate Starts for Astro16_4:

(Start: 30 @2671 has 109 MA's), (52, 2740), (Start: 63 @2782 has 13 MA's), (68, 2806), (80, 2881), (101, 2953), (102, 2956), (103, 2962), (109, 2995), (125, 3031), (155, 3124), (156, 3127), (168, 3178), (179, 3256), (182, 3268), (191, 3310), (200, 3361), (213, 3442), (219, 3484), (233, 3565), (263, 3715),

Gene: AuntGwenStacy_11 Start: 6484, Stop: 7815, Start Num: 21

Candidate Starts for AuntGwenStacy_11:

(Start: 21 @6484 has 66 MA's), (24, 6490), (26, 6493), (43, 6541), (60, 6598), (64, 6619), (71, 6646), (88, 6739), (99, 6790), (100, 6793), (101, 6796), (125, 6895), (135, 6913), (138, 6922), (140, 6928), (146, 6949), (156, 7009), (166, 7051), (182, 7150), (190, 7186), (192, 7195), (193, 7198), (200, 7243), (201, 7246), (215, 7339), (218, 7363), (236, 7453), (241, 7471), (242, 7474), (261, 7585), (268, 7621), (274, 7654), (276, 7663), (281, 7699),

Gene: Avvas_4 Start: 2671, Stop: 3798, Start Num: 30

Candidate Starts for Avvas_4:

(Start: 30 @2671 has 109 MA's), (52, 2740), (Start: 62 @2776 has 2 MA's), (Start: 63 @2782 has 13 MA's), (68, 2806), (80, 2881), (101, 2953), (102, 2956), (103, 2962), (109, 2995), (125, 3031), (155, 3124), (156, 3127), (168, 3178), (179, 3256), (182, 3268), (191, 3310), (200, 3361), (213, 3442), (219, 3484), (233, 3565), (263, 3715),

Gene: Azizam_4 Start: 2770, Stop: 3786, Start Num: 63

Candidate Starts for Azizam_4:

(Start: 23 @2644 has 1 MA's), (Start: 30 @2659 has 109 MA's), (52, 2728), (Start: 63 @2770 has 13 MA's), (68, 2794), (80, 2869), (101, 2941), (102, 2944), (103, 2950), (109, 2983), (125, 3019), (146, 3067), (155, 3112), (156, 3115), (168, 3166), (179, 3244), (182, 3256), (191, 3298), (199, 3346), (200, 3349), (210, 3400), (213, 3430), (219, 3472), (223, 3514), (233, 3553), (263, 3703),

Gene: Aztec_4 Start: 2659, Stop: 3786, Start Num: 30

Candidate Starts for Aztec_4:

(Start: 30 @2659 has 109 MA's), (52, 2728), (Start: 63 @2770 has 13 MA's), (68, 2794), (80, 2869), (101, 2941), (102, 2944), (103, 2950), (109, 2983), (125, 3019), (155, 3112), (156, 3115), (168, 3166), (179, 3244), (182, 3256), (191, 3298), (200, 3349), (213, 3430), (219, 3472), (233, 3553), (263, 3703),

Gene: B3_4 Start: 2800, Stop: 4233, Start Num: 32

Candidate Starts for B3_4:

(5, 2701), (10, 2725), (Start: 32 @2800 has 3 MA's), (35, 2809), (41, 2842), (46, 2851), (55, 2884), (67, 2938), (72, 2962), (74, 2977), (77, 2995), (93, 3067), (101, 3097), (130, 3199), (144, 3244), (154, 3289), (165, 3328), (167, 3334), (168, 3343), (169, 3352), (173, 3376), (183, 3436), (203, 3559), (205, 3565), (212, 3610), (218, 3664), (225, 3718), (232, 3748), (247, 3802), (257, 3871), (258, 3874), (262, 3901), (273, 3964), (274, 3967), (277, 3979), (284, 4045), (286, 4102), (288, 4150), (290, 4204),

Gene: BAKA_8 Start: 5468, Stop: 6691, Start Num: 21

Candidate Starts for BAKA_8:

(Start: 21 @5468 has 66 MA's), (64, 5594), (99, 5765), (101, 5771), (125, 5849), (156, 5954), (163, 5987), (164, 5990), (166, 5996), (173, 6038), (176, 6059), (200, 6188), (201, 6191), (215, 6284), (218, 6308), (242, 6419), (268, 6566), (276, 6605), (278, 6614), (280, 6629),

Gene: BFK20_ORF3 Start: 2178, Stop: 3449, Start Num: 21

Candidate Starts for BFK20_ORF3:

(Start: 21 @2178 has 66 MA's), (58, 2286), (74, 2370), (77, 2388), (88, 2436), (93, 2460), (94, 2466), (96, 2475), (101, 2490), (123, 2583), (153, 2679), (162, 2727), (177, 2808), (181, 2835), (184, 2844), (193, 2901), (203, 2973), (213, 3039), (216, 3057), (218, 3078), (219, 3081), (238, 3183), (243, 3198), (245, 3207), (262, 3321), (266, 3345), (283, 3438),

Gene: BabeRuth_4 Start: 2263, Stop: 3552, Start Num: 22

Candidate Starts for BabeRuth_4:

(Start: 22 @2263 has 51 MA's), (34, 2299), (51, 2350), (58, 2356), (65, 2392), (68, 2404), (79, 2482), (100, 2557), (118, 2629), (122, 2638), (123, 2644), (126, 2650), (128, 2653), (155, 2740), (175, 2839), (178, 2854), (180, 2872), (203, 3010), (210, 3046), (218, 3115), (220, 3124), (225, 3169), (235, 3205), (243, 3235), (258, 3331), (262, 3358), (276, 3430),

Gene: Bagrid_10 Start: 5265, Stop: 6488, Start Num: 21

Candidate Starts for Bagrid_10:

(Start: 21 @5265 has 66 MA's), (64, 5391), (99, 5562), (101, 5568), (125, 5646), (156, 5751), (163, 5784), (164, 5787), (166, 5793), (173, 5835), (176, 5856), (200, 5985), (201, 5988), (215, 6081), (218, 6105), (242, 6216), (268, 6363), (276, 6402), (278, 6411), (280, 6426),

Gene: Baine_4 Start: 2656, Stop: 3783, Start Num: 30

Candidate Starts for Baine_4:

(Start: 30 @2656 has 109 MA's), (52, 2725), (Start: 63 @2767 has 13 MA's), (68, 2791), (80, 2866), (101, 2938), (102, 2941), (103, 2947), (109, 2980), (125, 3016), (155, 3109), (156, 3112), (168, 3163), (179, 3241), (182, 3253), (191, 3295), (200, 3346), (213, 3427), (219, 3469), (233, 3550), (263, 3700),

Gene: Banquo_12 Start: 6215, Stop: 7504, Start Num: 19

Candidate Starts for Banquo_12:

(1, 5927), (Start: 19 @6215 has 8 MA's), (Start: 21 @6224 has 66 MA's), (68, 6374), (96, 6515), (106, 6563), (107, 6566), (133, 6638), (145, 6680), (152, 6707), (153, 6710), (155, 6725), (167, 6770), (180, 6860), (193, 6926), (203, 6998), (214, 7073), (218, 7103), (222, 7139), (235, 7193), (251, 7256), (262, 7340), (283, 7454),

Gene: BarBear_4 Start: 2671, Stop: 3798, Start Num: 30

Candidate Starts for BarBear_4:

(Start: 30 @2671 has 109 MA's), (52, 2740), (Start: 63 @2782 has 13 MA's), (68, 2806), (80, 2881), (101, 2953), (102, 2956), (103, 2962), (109, 2995), (125, 3031), (155, 3124), (156, 3127), (168, 3178), (179, 3256), (182, 3268), (191, 3310), (200, 3361), (213, 3442), (219, 3484), (233, 3565), (263, 3715),

Gene: Barebow_3 Start: 1899, Stop: 3107, Start Num: 28

Candidate Starts for Barebow_3:

(28, 1899), (48, 1971), (69, 2049), (78, 2103), (92, 2166), (101, 2196), (135, 2289), (155, 2373), (160, 2397), (189, 2550), (202, 2616), (216, 2700), (227, 2790), (265, 2970),

Gene: Beem_12 Start: 5831, Stop: 7054, Start Num: 21

Candidate Starts for Beem_12:

(Start: 21 @5831 has 66 MA's), (64, 5957), (99, 6128), (101, 6134), (125, 6212), (156, 6317), (163, 6350), (164, 6353), (166, 6359), (173, 6401), (176, 6422), (200, 6551), (201, 6554), (215, 6647), (218, 6671), (242, 6782), (268, 6929), (276, 6968), (278, 6977), (280, 6992),

Gene: Belthelas_4 Start: 2821, Stop: 3837, Start Num: 63

Candidate Starts for Belthelas_4:

(Start: 30 @2710 has 109 MA's), (52, 2779), (Start: 62 @2815 has 2 MA's), (Start: 63 @2821 has 13 MA's), (68, 2845), (80, 2920), (101, 2992), (102, 2995), (103, 3001), (109, 3034), (125, 3070), (155, 3163), (156, 3166), (168, 3217), (179, 3295), (182, 3307), (191, 3349), (199, 3397), (200, 3400), (210, 3451), (213, 3481), (219, 3523), (233, 3604), (263, 3754),

Gene: BinkBonk_4 Start: 2671, Stop: 3798, Start Num: 30

Candidate Starts for BinkBonk_4:

(Start: 30 @2671 has 109 MA's), (52, 2740), (Start: 63 @2782 has 13 MA's), (68, 2806), (80, 2881), (101, 2953), (102, 2956), (103, 2962), (109, 2995), (125, 3031), (155, 3124), (156, 3127), (168, 3178), (179, 3256), (182, 3268), (191, 3310), (200, 3361), (213, 3442), (219, 3484), (233, 3565), (263, 3715),

Gene: Bintii_4 Start: 2689, Stop: 3816, Start Num: 30

Candidate Starts for Bintii_4:

(Start: 30 @2689 has 109 MA's), (52, 2758), (Start: 62 @2794 has 2 MA's), (Start: 63 @2800 has 13 MA's), (68, 2824), (80, 2899), (101, 2971), (102, 2974), (103, 2980), (109, 3013), (125, 3049), (155, 3142), (156, 3145), (168, 3196), (179, 3274), (182, 3286), (191, 3328), (200, 3379), (213, 3460), (219, 3502), (227, 3568), (233, 3583), (263, 3733),

Gene: Bipper_11 Start: 6524, Stop: 7870, Start Num: 21

Candidate Starts for Bipper_11:

(Start: 21 @6524 has 66 MA's), (59, 6623), (64, 6656), (71, 6683), (72, 6689), (84, 6761), (99, 6830), (101, 6836), (121, 6920), (125, 6935), (146, 6989), (148, 7007), (156, 7049), (166, 7091), (172, 7127), (182, 7190), (193, 7238), (214, 7373), (215, 7379), (218, 7403), (231, 7481), (237, 7496), (241, 7511), (274, 7694), (276, 7703), (278, 7712),

Gene: Biscayne_4 Start: 2687, Stop: 3844, Start Num: 30

Candidate Starts for Biscayne_4:

(Start: 20 @2660 has 1 MA's), (Start: 30 @2687 has 109 MA's), (52, 2756), (Start: 62 @2792 has 2 MA's), (Start: 63 @2798 has 13 MA's), (68, 2822), (80, 2897), (101, 2969), (102, 2972), (103, 2978), (109, 3011), (120, 3032), (125, 3047), (136, 3065), (155, 3140), (156, 3143), (168, 3194), (179, 3272), (182, 3284), (191, 3326), (199, 3374), (200, 3377), (210, 3428), (213, 3458), (219, 3500), (227, 3566), (233, 3581), (263, 3731),

Gene: Bobby_13 Start: 5558, Stop: 6781, Start Num: 21

Candidate Starts for Bobby_13:

(Start: 21 @5558 has 66 MA's), (64, 5684), (99, 5855), (101, 5861), (125, 5939), (156, 6044), (163, 6077), (164, 6080), (166, 6086), (173, 6128), (176, 6149), (200, 6278), (201, 6281), (215, 6374), (218, 6398), (242, 6509), (268, 6656), (276, 6695), (278, 6704), (280, 6719),

Gene: Bodhi17_4 Start: 2656, Stop: 3783, Start Num: 30

Candidate Starts for Bodhi17_4:

(Start: 20 @2629 has 1 MA's), (Start: 30 @2656 has 109 MA's), (52, 2725), (Start: 62 @2761 has 2 MA's), (Start: 63 @2767 has 13 MA's), (68, 2791), (80, 2866), (101, 2938), (102, 2941), (103, 2947), (109, 2980), (125, 3016), (146, 3064), (155, 3109), (156, 3112), (168, 3163), (179, 3241), (182, 3253), (191, 3295), (200, 3346), (213, 3427), (219, 3469), (233, 3550), (263, 3700),

Gene: Bombitas_9 Start: 5140, Stop: 6363, Start Num: 21

Candidate Starts for Bombitas_9:

(Start: 21 @5140 has 66 MA's), (64, 5266), (99, 5437), (101, 5443), (125, 5521), (156, 5626), (163, 5659), (164, 5662), (166, 5668), (173, 5710), (176, 5731), (200, 5860), (201, 5863), (215, 5956), (218, 5980), (242, 6091), (268, 6238), (276, 6277), (278, 6286), (280, 6301),

Gene: BonaeVitae_4 Start: 2373, Stop: 3533, Start Num: 30

Candidate Starts for BonaeVitae_4:

(Start: 22 @2355 has 51 MA's), (27, 2364), (Start: 30 @2373 has 109 MA's), (Start: 63 @2484 has 13 MA's), (68, 2508), (82, 2586), (101, 2655), (103, 2664), (109, 2697), (146, 2781), (156, 2829), (179, 2958), (182, 2970), (189, 3003), (198, 3057), (200, 3063), (210, 3114), (219, 3186), (227, 3252), (233, 3267), (262, 3411), (263, 3417),

Gene: BoomRoasted_4 Start: 2710, Stop: 3837, Start Num: 30

Candidate Starts for BoomRoasted_4:

(Start: 20 @2683 has 1 MA's), (Start: 30 @2710 has 109 MA's), (52, 2779), (Start: 62 @2815 has 2 MA's), (Start: 63 @2821 has 13 MA's), (68, 2845), (80, 2920), (101, 2992), (102, 2995), (103, 3001), (109, 3034), (125, 3070), (146, 3118), (155, 3163), (156, 3166), (168, 3217), (179, 3295), (182, 3307), (191, 3349), (199, 3397), (200, 3400), (210, 3451), (213, 3481), (219, 3523), (233, 3604), (263, 3754),

Gene: Bosection6_4 Start: 2249, Stop: 3538, Start Num: 22

Candidate Starts for Bosection6_4:

(Start: 22 @2249 has 51 MA's), (51, 2336), (58, 2342), (65, 2378), (68, 2390), (79, 2468), (100, 2543), (123, 2630), (175, 2825), (178, 2840), (186, 2882), (203, 2996), (218, 3101), (220, 3110), (225, 3155), (235, 3191), (243, 3221), (262, 3344), (276, 3416), (277, 3422),

Gene: Bradley2_4 Start: 2659, Stop: 3786, Start Num: 30

Candidate Starts for Bradley2_4:

(Start: 30 @2659 has 109 MA's), (52, 2728), (Start: 63 @2770 has 13 MA's), (68, 2794), (80, 2869), (87, 2887), (101, 2941), (102, 2944), (103, 2950), (109, 2983), (125, 3019), (155, 3112), (156, 3115), (168, 3166), (179, 3244), (182, 3256), (191, 3298), (200, 3349), (213, 3430), (219, 3472), (233, 3553), (263, 3703),

Gene: Bri160_4 Start: 2710, Stop: 3837, Start Num: 30

Candidate Starts for Bri160_4:

(Start: 20 @2683 has 1 MA's), (Start: 30 @2710 has 109 MA's), (52, 2779), (Start: 62 @2815 has 2 MA's), (Start: 63 @2821 has 13 MA's), (68, 2845), (80, 2920), (101, 2992), (102, 2995), (103, 3001), (109, 3034), (125, 3070), (146, 3118), (155, 3163), (156, 3166), (168, 3217), (179, 3295), (182, 3307), (191, 3349), (199, 3397), (200, 3400), (210, 3451), (213, 3481), (219, 3523), (233, 3604), (263, 3754),

Gene: BrokMonster_4 Start: 2656, Stop: 3783, Start Num: 30

Candidate Starts for BrokMonster_4:

(Start: 23 @2641 has 1 MA's), (Start: 30 @2656 has 109 MA's), (52, 2725), (Start: 63 @2767 has 13 MA's), (68, 2791), (80, 2866), (101, 2938), (102, 2941), (103, 2947), (109, 2980), (125, 3016), (146, 3064), (155, 3109), (156, 3112), (168, 3163), (179, 3241), (182, 3253), (191, 3295), (199, 3343), (200, 3346), (213, 3427), (219, 3469), (223, 3511), (233, 3550), (263, 3700),

Gene: Bullzi2019_4 Start: 2791, Stop: 3807, Start Num: 63

Candidate Starts for Bullzi2019_4:

(Start: 30 @2680 has 109 MA's), (52, 2749), (Start: 62 @2785 has 2 MA's), (Start: 63 @2791 has 13 MA's), (68, 2815), (80, 2890), (101, 2962), (102, 2965), (103, 2971), (109, 3004), (125, 3040), (155, 3133), (156, 3136), (168, 3187), (179, 3265), (182, 3277), (191, 3319), (200, 3370), (213, 3451), (219, 3493), (227, 3559), (233, 3574), (263, 3724),

Gene: Burgy_4 Start: 2671, Stop: 3798, Start Num: 30

Candidate Starts for Burgy_4:

(Start: 30 @2671 has 109 MA's), (52, 2740), (Start: 62 @2776 has 2 MA's), (Start: 63 @2782 has 13 MA's), (68, 2806), (80, 2881), (101, 2953), (102, 2956), (103, 2962), (109, 2995), (125, 3031), (155, 3124), (156, 3127), (168, 3178), (179, 3256), (182, 3268), (191, 3310), (200, 3361), (213, 3442), (219, 3484), (233, 3565), (263, 3715),

Gene: BurtonThePup_4 Start: 2671, Stop: 3798, Start Num: 30

Candidate Starts for BurtonThePup_4:

(Start: 30 @2671 has 109 MA's), (52, 2740), (Start: 63 @2782 has 13 MA's), (68, 2806), (80, 2881), (101, 2953), (102, 2956), (103, 2962), (109, 2995), (125, 3031), (155, 3124), (156, 3127), (168, 3178), (179, 3256), (182, 3268), (191, 3310), (200, 3361), (213, 3442), (219, 3484), (233, 3565), (263, 3715),

Gene: Butters_4 Start: 2249, Stop: 3535, Start Num: 22

Candidate Starts for Butters_4:

(Start: 22 @2249 has 51 MA's), (51, 2336), (58, 2342), (65, 2378), (68, 2390), (100, 2543), (118, 2615), (155, 2726), (156, 2729), (170, 2795), (171, 2798), (175, 2825), (178, 2840), (186, 2882), (203, 2996), (218, 3101), (225, 3155), (226, 3158), (235, 3191), (243, 3221), (262, 3344), (272, 3404),

Gene: Carcharodon_4 Start: 2249, Stop: 3538, Start Num: 22

Candidate Starts for Carcharodon_4:

(Start: 22 @2249 has 51 MA's), (51, 2336), (58, 2342), (65, 2378), (68, 2390), (79, 2468), (100, 2543), (123, 2630), (155, 2726), (175, 2825), (178, 2840), (186, 2882), (203, 2996), (218, 3101), (220, 3110), (225, 3155), (235, 3191), (243, 3221), (262, 3344), (276, 3416), (277, 3422),

Gene: Catfish_7 Start: 4168, Stop: 5466, Start Num: 21

Candidate Starts for Catfish_7:

(Start: 21 @4168 has 66 MA's), (49, 4246), (56, 4264), (61, 4285), (68, 4318), (79, 4396), (85, 4408), (88, 4420), (104, 4486), (105, 4489), (107, 4510), (118, 4549), (155, 4669), (157, 4675), (167, 4714), (177, 4783), (180, 4804), (203, 4942), (214, 5017), (218, 5047), (222, 5083), (243, 5167), (244, 5173), (246, 5182), (249, 5194), (262, 5284),

Gene: Cayde6_4 Start: 2656, Stop: 3783, Start Num: 30

Candidate Starts for Cayde6_4:

(Start: 30 @2656 has 109 MA's), (52, 2725), (Start: 63 @2767 has 13 MA's), (68, 2791), (80, 2866), (101, 2938), (102, 2941), (103, 2947), (109, 2980), (125, 3016), (155, 3109), (156, 3112), (168, 3163), (179, 3241), (182, 3253), (191, 3295), (200, 3346), (213, 3427), (219, 3469), (233, 3550), (263, 3700),

Gene: Cazares_4 Start: 2647, Stop: 3774, Start Num: 30

Candidate Starts for Cazares_4:

(Start: 30 @2647 has 109 MA's), (52, 2716), (Start: 62 @2752 has 2 MA's), (Start: 63 @2758 has 13 MA's), (68, 2782), (80, 2857), (101, 2929), (102, 2932), (103, 2938), (109, 2971), (125, 3007), (155, 3100), (156, 3103), (168, 3154), (179, 3232), (182, 3244), (191, 3286), (200, 3337), (213, 3418), (219, 3460), (227, 3526), (233, 3541), (263, 3691),

Gene: Charbie_4 Start: 2758, Stop: 3774, Start Num: 63

Candidate Starts for Charbie_4:

(Start: 30 @2647 has 109 MA's), (52, 2716), (Start: 63 @2758 has 13 MA's), (68, 2782), (80, 2857), (101, 2929), (102, 2932), (103, 2938), (109, 2971), (125, 3007), (155, 3100), (156, 3103), (168, 3154), (179, 3232), (182, 3244), (191, 3286), (200, 3337), (210, 3388), (213, 3418), (219, 3460), (233, 3541), (263, 3691),

Gene: Charlie_4 Start: 2249, Stop: 3538, Start Num: 22

Candidate Starts for Charlie_4:

(Start: 22 @2249 has 51 MA's), (51, 2336), (58, 2342), (65, 2378), (68, 2390), (79, 2468), (100, 2543), (123, 2630), (175, 2825), (178, 2840), (186, 2882), (203, 2996), (218, 3101), (220, 3110), (225, 3155), (235, 3191), (243, 3221), (262, 3344), (276, 3416), (277, 3422),

Gene: Chatham_4 Start: 2659, Stop: 3786, Start Num: 30

Candidate Starts for Chatham_4:

(Start: 30 @2659 has 109 MA's), (52, 2728), (Start: 63 @2770 has 13 MA's), (68, 2794), (80, 2869), (101, 2941), (102, 2944), (103, 2950), (109, 2983), (125, 3019), (155, 3112), (156, 3115), (168, 3166), (179, 3244), (182, 3256), (191, 3298), (200, 3349), (213, 3430), (219, 3472), (233, 3553), (263, 3703),

Gene: Cheesecake_4 Start: 2671, Stop: 3798, Start Num: 30

Candidate Starts for Cheesecake_4:

(Start: 30 @2671 has 109 MA's), (52, 2740), (Start: 62 @2776 has 2 MA's), (Start: 63 @2782 has 13 MA's), (68, 2806), (80, 2881), (101, 2953), (102, 2956), (103, 2962), (109, 2995), (125, 3031), (155, 3124), (156, 3127), (168, 3178), (179, 3256), (182, 3268), (191, 3310), (200, 3361), (213, 3442), (219, 3484), (233, 3565), (263, 3715),

Gene: Chewbacca_4 Start: 2249, Stop: 3538, Start Num: 22

Candidate Starts for Chewbacca_4:

(Start: 22 @2249 has 51 MA's), (51, 2336), (58, 2342), (65, 2378), (68, 2390), (79, 2468), (100, 2543), (123, 2630), (175, 2825), (178, 2840), (186, 2882), (203, 2996), (218, 3101), (220, 3110), (225, 3155), (235, 3191), (243, 3221), (262, 3344), (276, 3416), (277, 3422),

Gene: Ciel_4 Start: 2671, Stop: 3798, Start Num: 30

Candidate Starts for Ciel_4:

(Start: 30 @2671 has 109 MA's), (52, 2740), (Start: 63 @2782 has 13 MA's), (68, 2806), (80, 2881), (101, 2953), (102, 2956), (103, 2962), (109, 2995), (125, 3031), (155, 3124), (156, 3127), (168, 3178), (179, 3256), (182, 3268), (191, 3310), (200, 3361), (213, 3442), (219, 3484), (233, 3565), (263, 3715),

Gene: Clownery_4 Start: 2764, Stop: 3891, Start Num: 30

Candidate Starts for Clownery_4:

(Start: 30 @2764 has 109 MA's), (52, 2833), (Start: 62 @2869 has 2 MA's), (Start: 63 @2875 has 13 MA's), (68, 2899), (80, 2974), (101, 3046), (102, 3049), (103, 3055), (109, 3088), (125, 3124), (155, 3217), (156, 3220), (168, 3271), (179, 3349), (182, 3361), (191, 3403), (200, 3454), (213, 3535), (219, 3577), (227, 3643), (233, 3658), (263, 3808),

Gene: Concrete_4 Start: 2710, Stop: 3837, Start Num: 30

Candidate Starts for Concrete_4:

(Start: 20 @2683 has 1 MA's), (Start: 30 @2710 has 109 MA's), (52, 2779), (Start: 63 @2821 has 13 MA's), (68, 2845), (80, 2920), (101, 2992), (102, 2995), (103, 3001), (109, 3034), (125, 3070), (155, 3163), (156, 3166), (168, 3217), (179, 3295), (182, 3307), (191, 3349), (199, 3397), (200, 3400), (210, 3451), (213, 3481), (219, 3523), (233, 3604), (263, 3754),

Gene: Constella_7 Start: 4649, Stop: 5872, Start Num: 21

Candidate Starts for Constella_7:

(Start: 21 @4649 has 66 MA's), (64, 4775), (99, 4946), (101, 4952), (125, 5030), (156, 5135), (163, 5168), (164, 5171), (166, 5177), (173, 5219), (176, 5240), (200, 5369), (201, 5372), (215, 5465), (218, 5489), (242, 5600), (268, 5747), (276, 5786), (278, 5795), (280, 5810),

Gene: Courthouse_12 Start: 5434, Stop: 6669, Start Num: 21

Candidate Starts for Courthouse_12:

(Start: 21 @5434 has 66 MA's), (75, 5620), (90, 5689), (99, 5737), (101, 5743), (125, 5821), (156, 5929), (163, 5962), (164, 5965), (166, 5971), (187, 6085), (190, 6106), (200, 6163), (201, 6166), (215, 6259), (218, 6283), (224, 6334), (227, 6349), (233, 6364), (262, 6508), (276, 6580), (278, 6589),

Gene: Cracklewink_11 Start: 6524, Stop: 7870, Start Num: 21

Candidate Starts for Cracklewink_11:

(Start: 21 @6524 has 66 MA's), (59, 6623), (64, 6656), (71, 6683), (72, 6689), (84, 6761), (99, 6830), (101, 6836), (121, 6920), (125, 6935), (146, 6989), (148, 7007), (156, 7049), (166, 7091), (172, 7127), (182, 7190), (193, 7238), (214, 7373), (215, 7379), (218, 7403), (231, 7481), (237, 7496), (241, 7511), (274, 7694), (276, 7703), (278, 7712),

Gene: DaftyDuck_4 Start: 2671, Stop: 3798, Start Num: 30

Candidate Starts for DaftyDuck_4:

(Start: 30 @2671 has 109 MA's), (52, 2740), (Start: 62 @2776 has 2 MA's), (Start: 63 @2782 has 13 MA's), (68, 2806), (80, 2881), (101, 2953), (102, 2956), (103, 2962), (109, 2995), (125, 3031), (155, 3124), (156, 3127), (168, 3178), (179, 3256), (182, 3268), (191, 3310), (200, 3361), (213, 3442), (219, 3484), (233, 3565), (263, 3715),

Gene: Dallas_11 Start: 5370, Stop: 6593, Start Num: 21

Candidate Starts for Dallas_11:

(Start: 21 @5370 has 66 MA's), (64, 5496), (99, 5667), (101, 5673), (125, 5751), (156, 5856), (163, 5889), (164, 5892), (166, 5898), (173, 5940), (176, 5961), (200, 6090), (201, 6093), (215, 6186), (218, 6210), (242, 6321), (268, 6468), (276, 6507), (278, 6516), (280, 6531),

Gene: Danimal_4 Start: 2659, Stop: 3786, Start Num: 30

Candidate Starts for Danimal_4:

(Start: 30 @2659 has 109 MA's), (52, 2728), (Start: 63 @2770 has 13 MA's), (68, 2794), (80, 2869), (101, 2941), (102, 2944), (103, 2950), (109, 2983), (125, 3019), (155, 3112), (156, 3115), (168, 3166), (179, 3244), (182, 3256), (191, 3298), (200, 3349), (213, 3430), (219, 3472), (233, 3553), (263, 3703),

Gene: Danno_4 Start: 2671, Stop: 3798, Start Num: 30

Candidate Starts for Danno_4:

(Start: 30 @2671 has 109 MA's), (52, 2740), (Start: 62 @2776 has 2 MA's), (Start: 63 @2782 has 13 MA's), (68, 2806), (80, 2881), (101, 2953), (102, 2956), (103, 2962), (109, 2995), (125, 3031), (155, 3124), (156, 3127), (168, 3178), (179, 3256), (182, 3268), (191, 3310), (200, 3361), (213, 3442), (219, 3484), (233, 3565), (263, 3715),

Gene: Dardanus_10 Start: 5244, Stop: 6548, Start Num: 21

Candidate Starts for Dardanus_10:

(Start: 21 @5244 has 66 MA's), (29, 5262), (61, 5361), (66, 5388), (79, 5472), (86, 5487), (101, 5550), (107, 5586), (108, 5589), (109, 5592), (133, 5658), (144, 5697), (152, 5727), (153, 5730), (155, 5745), (167, 5790), (177, 5859), (180, 5880), (203, 6018), (205, 6024), (214, 6093), (216, 6102), (218, 6123), (222, 6159), (235, 6213), (243, 6243), (249, 6270), (251, 6276), (262, 6360), (268, 6393), (271, 6417), (274, 6426), (276, 6432),

Gene: DinoDaryn_10 Start: 5301, Stop: 6593, Start Num: 19

Candidate Starts for DinoDaryn_10:

(4, 5223), (Start: 19 @5301 has 8 MA's), (Start: 21 @5310 has 66 MA's), (56, 5406), (68, 5460), (101, 5616), (107, 5652), (118, 5691), (128, 5715), (144, 5763), (145, 5766), (153, 5796), (155, 5811), (156, 5814), (167, 5856), (193, 6012), (203, 6084), (218, 6189), (221, 6201), (222, 6225), (235, 6279), (243, 6309), (244, 6315), (262, 6426),

Gene: DmpstrDiver_11 Start: 6011, Stop: 7234, Start Num: 21

Candidate Starts for DmpstrDiver_11:

(Start: 21 @6011 has 66 MA's), (64, 6137), (99, 6308), (101, 6314), (125, 6392), (156, 6497), (163, 6530), (164, 6533), (166, 6539), (173, 6581), (176, 6602), (200, 6731), (201, 6734), (215, 6827), (218, 6851), (242, 6962), (268, 7109), (276, 7148), (278, 7157), (280, 7172),

Gene: Dongwon_4 Start: 2659, Stop: 3786, Start Num: 30

Candidate Starts for Dongwon_4:

(Start: 30 @2659 has 109 MA's), (52, 2728), (Start: 63 @2770 has 13 MA's), (68, 2794), (80, 2869), (101, 2941), (102, 2944), (103, 2950), (109, 2983), (125, 3019), (155, 3112), (156, 3115), (168, 3166), (179, 3244), (182, 3256), (191, 3298), (200, 3349), (213, 3430), (219, 3472), (233, 3553), (263, 3703),

Gene: DonkeyMan_4 Start: 2354, Stop: 3652, Start Num: 22

Candidate Starts for DonkeyMan_4:

(Start: 22 @2354 has 51 MA's), (Start: 23 @2357 has 1 MA's), (31, 2381), (38, 2411), (65, 2483), (88, 2600), (120, 2732), (124, 2747), (126, 2750), (169, 2906), (180, 2978), (203, 3119), (206, 3128), (208, 3140), (210, 3155), (217, 3212), (218, 3224), (225, 3278), (226, 3281), (228, 3296), (235, 3314), (240, 3335), (262, 3461),

Gene: Dooby_4 Start: 2659, Stop: 3786, Start Num: 30

Candidate Starts for Dooby_4:

(Start: 30 @2659 has 109 MA's), (52, 2728), (Start: 63 @2770 has 13 MA's), (68, 2794), (80, 2869), (101, 2941), (102, 2944), (103, 2950), (109, 2983), (125, 3019), (155, 3112), (156, 3115), (168, 3166), (179, 3244), (182, 3256), (191, 3298), (200, 3349), (213, 3430), (219, 3472), (233, 3553), (263, 3703),

Gene: Duggie_4 Start: 2629, Stop: 3783, Start Num: 20

Candidate Starts for Duggie_4:

(Start: 20 @2629 has 1 MA's), (Start: 30 @2656 has 109 MA's), (52, 2725), (Start: 62 @2761 has 2 MA's), (Start: 63 @2767 has 13 MA's), (68, 2791), (80, 2866), (101, 2938), (102, 2941), (103, 2947), (109, 2980), (125, 3016), (155, 3109), (156, 3112), (168, 3163), (179, 3241), (182, 3253), (191, 3295), (200, 3346), (213, 3427), (219, 3469), (233, 3550), (263, 3700),

Gene: Dove_9 Start: 5139, Stop: 6362, Start Num: 21

Candidate Starts for Dove_9:

(Start: 21 @5139 has 66 MA's), (64, 5265), (99, 5436), (101, 5442), (125, 5520), (156, 5625), (163, 5658), (164, 5661), (166, 5667), (173, 5709), (176, 5730), (200, 5859), (201, 5862), (215, 5955), (218, 5979), (242, 6090), (268, 6237), (276, 6276), (278, 6285), (280, 6300),

Gene: Duke13_8 Start: 5396, Stop: 6619, Start Num: 21

Candidate Starts for Duke13_8:

(Start: 21 @5396 has 66 MA's), (64, 5522), (99, 5693), (101, 5699), (125, 5777), (156, 5882), (163, 5915), (164, 5918), (166, 5924), (173, 5966), (176, 5987), (200, 6116), (201, 6119), (215, 6212), (218, 6236), (242, 6347), (268, 6494), (276, 6533), (278, 6542), (280, 6557),

Gene: Duplicity_4 Start: 2249, Stop: 3538, Start Num: 22

Candidate Starts for Duplicity_4:

(Start: 22 @2249 has 51 MA's), (51, 2336), (58, 2342), (65, 2378), (68, 2390), (79, 2468), (100, 2543), (123, 2630), (175, 2825), (178, 2840), (186, 2882), (203, 2996), (218, 3101), (220, 3110), (225, 3155), (235, 3191), (243, 3221), (262, 3344), (276, 3416), (277, 3422),

Gene: E1_4 Start: 2800, Stop: 4233, Start Num: 32

Candidate Starts for E1_4:

(5, 2701), (10, 2725), (Start: 32 @2800 has 3 MA's), (35, 2809), (41, 2842), (46, 2851), (55, 2884), (67, 2938), (72, 2962), (74, 2977), (77, 2995), (93, 3067), (101, 3097), (130, 3199), (144, 3244), (149, 3262), (154, 3289), (165, 3328), (167, 3334), (168, 3343), (169, 3352), (173, 3376), (193, 3490), (203, 3559), (205, 3565), (212, 3610), (218, 3664), (225, 3718), (230, 3745), (247, 3802), (257, 3871), (258, 3874), (262, 3901), (273, 3964), (274, 3967), (277, 3979), (284, 4045), (286, 4102), (288, 4150), (290, 4204),

Gene: EdElric_4 Start: 2659, Stop: 3786, Start Num: 30

Candidate Starts for EdElric_4:

(Start: 30 @2659 has 109 MA's), (52, 2728), (Start: 63 @2770 has 13 MA's), (68, 2794), (80, 2869), (101, 2941), (102, 2944), (103, 2950), (109, 2983), (125, 3019), (155, 3112), (156, 3115), (168, 3166), (179, 3244), (182, 3256), (191, 3298), (200, 3349), (213, 3430), (219, 3472), (233, 3553), (263, 3703),

Gene: Efeko_5 Start: 2520, Stop: 3692, Start Num: 30

Candidate Starts for Efeko_5:

(25, 2508), (Start: 30 @2520 has 109 MA's), (52, 2592), (53, 2598), (68, 2658), (101, 2805), (103, 2814), (127, 2886), (146, 2931), (156, 2979), (179, 3108), (199, 3210), (200, 3213), (213, 3294), (219, 3336), (233, 3417), (262, 3561), (263, 3567),

Gene: Eightball_4 Start: 2671, Stop: 3798, Start Num: 30

Candidate Starts for Eightball_4:

(Start: 30 @2671 has 109 MA's), (52, 2740), (Start: 63 @2782 has 13 MA's), (68, 2806), (80, 2881), (101, 2953), (102, 2956), (103, 2962), (109, 2995), (125, 3031), (155, 3124), (156, 3127), (168, 3178), (179, 3256), (182, 3268), (191, 3310), (200, 3361), (213, 3442), (219, 3484), (233, 3565), (263, 3715),

Gene: Ejimix_13 Start: 6581, Stop: 7804, Start Num: 21

Candidate Starts for Ejimix_13:

(Start: 21 @6581 has 66 MA's), (64, 6707), (99, 6878), (101, 6884), (125, 6962), (156, 7067), (163, 7100), (164, 7103), (166, 7109), (173, 7151), (176, 7172), (200, 7301), (201, 7304), (215, 7397), (218, 7421), (242, 7532), (268, 7679), (276, 7718), (278, 7727), (280, 7742),

Gene: Ekko14_4 Start: 2647, Stop: 3774, Start Num: 30

Candidate Starts for Ekko14_4:

(Start: 30 @2647 has 109 MA's), (52, 2716), (Start: 62 @2752 has 2 MA's), (Start: 63 @2758 has 13 MA's), (68, 2782), (80, 2857), (101, 2929), (102, 2932), (103, 2938), (109, 2971), (125, 3007), (155, 3100), (156, 3103), (168, 3154), (179, 3232), (182, 3244), (191, 3286), (200, 3337), (210, 3388), (213, 3418), (219, 3460), (227, 3526), (233, 3541), (263, 3691),

Gene: Elspeth_4 Start: 2647, Stop: 3774, Start Num: 30

Candidate Starts for Elspeth_4:

(Start: 30 @2647 has 109 MA's), (52, 2716), (Start: 62 @2752 has 2 MA's), (Start: 63 @2758 has 13 MA's), (68, 2782), (80, 2857), (101, 2929), (102, 2932), (103, 2938), (109, 2971), (125, 3007), (155, 3100), (156, 3103), (168, 3154), (179, 3232), (182, 3244), (191, 3286), (200, 3337), (210, 3388), (213, 3418), (219, 3460), (227, 3526), (233, 3541), (263, 3691),

Gene: EricMillard_12 Start: 6116, Stop: 7339, Start Num: 21

Candidate Starts for EricMillard_12:

(Start: 21 @6116 has 66 MA's), (64, 6242), (99, 6413), (101, 6419), (125, 6497), (156, 6602), (163, 6635), (164, 6638), (166, 6644), (173, 6686), (176, 6707), (200, 6836), (201, 6839), (215, 6932), (218, 6956), (242, 7067), (268, 7214), (276, 7253), (278, 7262), (280, 7277),

Gene: Erin_4 Start: 2659, Stop: 3786, Start Num: 30

Candidate Starts for Erin_4:

(Start: 30 @2659 has 109 MA's), (52, 2728), (Start: 63 @2770 has 13 MA's), (68, 2794), (80, 2869), (101, 2941), (102, 2944), (103, 2950), (109, 2983), (125, 3019), (155, 3112), (156, 3115), (168, 3166), (179, 3244), (182, 3256), (191, 3298), (200, 3349), (213, 3430), (219, 3472), (233, 3553), (263, 3703),

Gene: Euratis_3 Start: 2222, Stop: 3574, Start Num: 21

Candidate Starts for Euratis_3:

(14, 2192), (Start: 21 @2222 has 66 MA's), (49, 2300), (66, 2366), (71, 2387), (84, 2462), (95, 2510), (119, 2615), (132, 2645), (139, 2669), (147, 2699), (152, 2726), (158, 2768), (159, 2771), (179, 2882), (182, 2894), (188, 2915), (208, 3032), (217, 3104), (229, 3185), (253, 3284), (256, 3320), (264, 3371), (270, 3410), (275, 3428), (279, 3449),

Gene: Faith5x5_4 Start: 2170, Stop: 3483, Start Num: 22

Candidate Starts for Faith5x5_4:

(Start: 22 @2170 has 51 MA's), (31, 2197), (51, 2260), (58, 2281), (61, 2296), (65, 2317), (68, 2329), (79, 2407), (86, 2428), (88, 2437), (89, 2440), (97, 2479), (101, 2491), (109, 2533), (118, 2557), (120, 2560), (126, 2578), (128, 2581), (156, 2671), (170, 2737), (180, 2800), (203, 2938), (217, 3031), (218, 3043), (225, 3097), (235, 3133), (253, 3214), (262, 3286), (263, 3292), (277, 3364),

Gene: Frizzle_2 Start: 1804, Stop: 3138, Start Num: 21

Candidate Starts for Frizzle_2:

(Start: 21 @1804 has 66 MA's), (36, 1846), (68, 1960), (72, 1981), (73, 1990), (88, 2062), (107, 2152), (153, 2299), (167, 2359), (180, 2449), (203, 2590), (214, 2665), (217, 2683), (218, 2695), (219, 2698), (222, 2731), (234, 2782), (243, 2815), (251, 2851), (253, 2863), (255, 2887), (282, 3043),

Gene: Fulbright_4 Start: 2249, Stop: 3538, Start Num: 22

Candidate Starts for Fulbright_4:

(Start: 22 @2249 has 51 MA's), (51, 2336), (58, 2342), (65, 2378), (68, 2390), (79, 2468), (100, 2543), (123, 2630), (155, 2726), (175, 2825), (178, 2840), (186, 2882), (203, 2996), (218, 3101), (220, 3110), (225, 3155), (235, 3191), (243, 3221), (262, 3344), (276, 3416), (277, 3422),

Gene: Gabbspett_4 Start: 2761, Stop: 3888, Start Num: 30

Candidate Starts for Gabbspett_4:

(Start: 30 @2761 has 109 MA's), (52, 2830), (Start: 63 @2872 has 13 MA's), (68, 2896), (80, 2971), (101, 3043), (102, 3046), (103, 3052), (109, 3085), (125, 3121), (155, 3214), (156, 3217), (168, 3268), (179, 3346), (182, 3358), (191, 3400), (200, 3451), (213, 3532), (219, 3574), (233, 3655), (263, 3805),

Gene: Gardevoir_4 Start: 2660, Stop: 3787, Start Num: 30

Candidate Starts for Gardevoir_4:

(Start: 30 @2660 has 109 MA's), (52, 2729), (Start: 63 @2771 has 13 MA's), (68, 2795), (80, 2870), (101, 2942), (102, 2945), (103, 2951), (109, 2984), (125, 3020), (155, 3113), (156, 3116), (168, 3167),

(179, 3245), (182, 3257), (191, 3299), (200, 3350), (213, 3431), (219, 3473), (233, 3554), (263, 3704),

Gene: Gex_4 Start: 2249, Stop: 3538, Start Num: 22

Candidate Starts for Gex_4:

(Start: 22 @2249 has 51 MA's), (51, 2336), (58, 2342), (65, 2378), (68, 2390), (79, 2468), (100, 2543), (123, 2630), (175, 2825), (178, 2840), (186, 2882), (203, 2996), (218, 3101), (220, 3110), (225, 3155), (235, 3191), (243, 3221), (262, 3344), (276, 3416), (277, 3422),

Gene: Ghobes_2 Start: 1804, Stop: 3138, Start Num: 21

Candidate Starts for Ghobes_2:

(Start: 21 @1804 has 66 MA's), (36, 1846), (68, 1960), (70, 1969), (72, 1981), (73, 1990), (88, 2062), (107, 2152), (153, 2299), (167, 2359), (171, 2389), (180, 2449), (203, 2590), (207, 2605), (214, 2665), (217, 2683), (218, 2695), (219, 2698), (222, 2731), (234, 2782), (243, 2815), (251, 2851), (253, 2863), (255, 2887), (282, 3043),

Gene: Gillker_4 Start: 2659, Stop: 3786, Start Num: 30

Candidate Starts for Gillker_4:

(Start: 30 @2659 has 109 MA's), (52, 2728), (Start: 63 @2770 has 13 MA's), (68, 2794), (80, 2869), (101, 2941), (102, 2944), (103, 2950), (109, 2983), (125, 3019), (155, 3112), (156, 3115), (168, 3166), (179, 3244), (182, 3256), (191, 3298), (200, 3349), (213, 3430), (219, 3472), (233, 3553), (263, 3703),

Gene: Godfather_4 Start: 2776, Stop: 3798, Start Num: 62

Candidate Starts for Godfather_4:

(Start: 30 @2671 has 109 MA's), (52, 2740), (Start: 62 @2776 has 2 MA's), (Start: 63 @2782 has 13 MA's), (68, 2806), (80, 2881), (101, 2953), (102, 2956), (103, 2962), (109, 2995), (125, 3031), (155, 3124), (156, 3127), (168, 3178), (179, 3256), (182, 3268), (191, 3310), (200, 3361), (213, 3442), (219, 3484), (233, 3565), (263, 3715),

Gene: Goib_9 Start: 5071, Stop: 6363, Start Num: 19

Candidate Starts for Goib_9:

(4, 4993), (Start: 19 @5071 has 8 MA's), (Start: 21 @5080 has 66 MA's), (56, 5176), (68, 5230), (101, 5386), (107, 5422), (118, 5461), (128, 5485), (144, 5533), (145, 5536), (153, 5566), (155, 5581), (156, 5584), (167, 5626), (193, 5782), (198, 5833), (203, 5854), (218, 5959), (221, 5971), (222, 5995), (235, 6049), (243, 6079), (244, 6085), (262, 6196), (279, 6280),

Gene: GoldenBlanche_4 Start: 2659, Stop: 3786, Start Num: 30

Candidate Starts for GoldenBlanche_4:

(Start: 30 @2659 has 109 MA's), (52, 2728), (Start: 63 @2770 has 13 MA's), (68, 2794), (80, 2869), (101, 2941), (102, 2944), (103, 2950), (109, 2983), (125, 3019), (155, 3112), (156, 3115), (168, 3166), (179, 3244), (182, 3256), (191, 3298), (200, 3349), (213, 3430), (219, 3472), (233, 3553), (263, 3703),

Gene: Gonephishing_12 Start: 5962, Stop: 7191, Start Num: 21

Candidate Starts for Gonephishing_12:

(Start: 21 @5962 has 66 MA's), (59, 6055), (64, 6088), (99, 6259), (100, 6262), (101, 6265), (125, 6343), (156, 6454), (160, 6475), (164, 6490), (166, 6496), (187, 6610), (190, 6631), (200, 6688), (201, 6691), (215, 6784), (218, 6808), (227, 6874), (255, 6985), (259, 7012), (274, 7096), (276, 7105), (280, 7129),

Gene: Goobery_4 Start: 2671, Stop: 3798, Start Num: 30

Candidate Starts for Goobery_4:

(Start: 30 @2671 has 109 MA's), (52, 2740), (Start: 63 @2782 has 13 MA's), (68, 2806), (80, 2881), (101, 2953), (102, 2956), (103, 2962), (109, 2995), (125, 3031), (155, 3124), (156, 3127), (168, 3178), (179, 3256), (182, 3268), (191, 3310), (200, 3361), (213, 3442), (219, 3484), (233, 3565), (263, 3715),

Gene: Gspu1_6 Start: 3629, Stop: 4933, Start Num: 21

Candidate Starts for Gspu1_6:

(Start: 19 @3623 has 8 MA's), (Start: 21 @3629 has 66 MA's), (49, 3707), (56, 3725), (65, 3767), (67, 3776), (74, 3815), (76, 3830), (79, 3857), (96, 3920), (105, 3950), (107, 3971), (108, 3974), (118, 4010), (151, 4109), (153, 4115), (155, 4130), (157, 4136), (177, 4244), (198, 4382), (214, 4478), (218, 4508), (220, 4517), (235, 4598), (238, 4613), (262, 4745), (268, 4778), (272, 4805), (274, 4811),

Gene: Gudmit_5 Start: 2938, Stop: 4251, Start Num: 22

Candidate Starts for Gudmit_5:

(Start: 22 @2938 has 51 MA's), (68, 3097), (86, 3196), (88, 3205), (89, 3208), (91, 3226), (97, 3247), (101, 3259), (118, 3325), (120, 3328), (124, 3343), (126, 3346), (128, 3349), (144, 3394), (155, 3436), (168, 3487), (169, 3496), (170, 3505), (171, 3508), (180, 3568), (196, 3673), (203, 3706), (216, 3790), (218, 3811), (219, 3814), (225, 3865), (235, 3901), (240, 3922), (260, 4039), (262, 4054), (277, 4132),

Gene: Gustav_3 Start: 2120, Stop: 3523, Start Num: 21

Candidate Starts for Gustav_3:

(Start: 21 @2120 has 66 MA's), (26, 2129), (44, 2192), (72, 2294), (101, 2429), (108, 2468), (111, 2477), (116, 2501), (143, 2576), (155, 2627), (161, 2654), (165, 2666), (167, 2672), (174, 2723), (203, 2903), (207, 2918), (211, 2948), (214, 2978), (218, 3008), (219, 3011), (225, 3062), (226, 3065), (245, 3137), (250, 3164), (256, 3215), (257, 3221),

Gene: Halley_12 Start: 5831, Stop: 7054, Start Num: 21

Candidate Starts for Halley_12:

(Start: 21 @5831 has 66 MA's), (64, 5957), (99, 6128), (101, 6134), (125, 6212), (156, 6317), (163, 6350), (164, 6353), (166, 6359), (173, 6401), (176, 6422), (200, 6551), (201, 6554), (215, 6647), (218, 6671), (242, 6782), (268, 6929), (276, 6968), (278, 6977), (280, 6992),

Gene: Hanako_4 Start: 2263, Stop: 3552, Start Num: 22

Candidate Starts for Hanako_4:

(Start: 22 @2263 has 51 MA's), (34, 2299), (51, 2350), (58, 2356), (65, 2392), (68, 2404), (79, 2482), (100, 2557), (118, 2629), (122, 2638), (123, 2644), (126, 2650), (128, 2653), (155, 2740), (175, 2839), (178, 2854), (180, 2872), (203, 3010), (210, 3046), (218, 3115), (220, 3124), (225, 3169), (235, 3205), (243, 3235), (258, 3331), (262, 3358), (276, 3430),

Gene: Hannaconda_9 Start: 4114, Stop: 5349, Start Num: 21

Candidate Starts for Hannaconda_9:

(Start: 21 @4114 has 66 MA's), (75, 4300), (90, 4369), (99, 4417), (101, 4423), (125, 4501), (156, 4609), (163, 4642), (164, 4645), (166, 4651), (187, 4765), (190, 4786), (200, 4843), (201, 4846), (215, 4939), (218, 4963), (224, 5014), (227, 5029), (233, 5044), (262, 5188), (276, 5260), (278, 5269),

Gene: HarperAnne_4 Start: 2758, Stop: 3774, Start Num: 63

Candidate Starts for HarperAnne_4:

(Start: 30 @2647 has 109 MA's), (52, 2716), (Start: 62 @2752 has 2 MA's), (Start: 63 @2758 has 13 MA's), (68, 2782), (80, 2857), (101, 2929), (102, 2932), (103, 2938), (109, 2971), (125, 3007), (155, 3100), (156, 3103), (168, 3154), (179, 3232), (182, 3244), (191, 3286), (200, 3337), (210, 3388), (213, 3418), (219, 3460), (227, 3526), (233, 3541), (263, 3691),

Gene: Heather_3 Start: 2179, Stop: 3543, Start Num: 21

Candidate Starts for Heather_3:

(6, 2119), (7, 2122), (Start: 21 @2179 has 66 MA's), (49, 2272), (Start: 62 @2311 has 2 MA's), (66, 2335), (83, 2428), (95, 2479), (104, 2521), (119, 2584), (127, 2605), (132, 2614), (135, 2620), (147, 2662), (152, 2689), (158, 2731), (159, 2734), (182, 2857), (185, 2866), (188, 2878), (190, 2893), (195,

2935), (208, 2995), (211, 3019), (229, 3148), (251, 3235), (256, 3283), (257, 3289), (260, 3304), (264, 3334), (276, 3397), (279, 3412),

Gene: Heinz_4 Start: 2356, Stop: 3654, Start Num: 22

Candidate Starts for Heinz_4:

(Start: 22 @2356 has 51 MA's), (Start: 23 @2359 has 1 MA's), (31, 2383), (38, 2413), (65, 2485), (81, 2578), (88, 2602), (100, 2653), (101, 2656), (120, 2734), (126, 2752), (169, 2908), (180, 2980), (203, 3121), (206, 3130), (208, 3142), (210, 3157), (217, 3214), (218, 3226), (225, 3280), (226, 3283), (228, 3298), (235, 3316), (240, 3337), (262, 3463),

Gene: Hernandez44_4 Start: 2872, Stop: 3888, Start Num: 63

Candidate Starts for Hernandez44_4:

(Start: 30 @2761 has 109 MA's), (52, 2830), (Start: 63 @2872 has 13 MA's), (68, 2896), (80, 2971), (101, 3043), (102, 3046), (103, 3052), (109, 3085), (125, 3121), (155, 3214), (156, 3217), (168, 3268), (179, 3346), (182, 3358), (191, 3400), (200, 3451), (213, 3532), (219, 3574), (233, 3655), (263, 3805),

Gene: Hibiscus_4 Start: 2356, Stop: 3654, Start Num: 22

Candidate Starts for Hibiscus_4:

(Start: 22 @2356 has 51 MA's), (Start: 23 @2359 has 1 MA's), (31, 2383), (38, 2413), (65, 2485), (88, 2602), (120, 2734), (124, 2749), (126, 2752), (169, 2908), (180, 2980), (203, 3121), (206, 3130), (208, 3142), (210, 3157), (217, 3214), (218, 3226), (225, 3280), (226, 3283), (228, 3298), (235, 3316), (240, 3337), (262, 3463),

Gene: Hilltopfarm_11 Start: 6514, Stop: 7845, Start Num: 21

Candidate Starts for Hilltopfarm_11:

(Start: 21 @6514 has 66 MA's), (24, 6520), (26, 6523), (43, 6571), (60, 6628), (64, 6649), (71, 6676), (88, 6769), (99, 6820), (100, 6823), (101, 6826), (125, 6925), (135, 6943), (138, 6952), (140, 6958), (146, 6979), (156, 7039), (166, 7081), (182, 7180), (190, 7216), (192, 7225), (193, 7228), (200, 7273), (201, 7276), (215, 7369), (218, 7393), (236, 7483), (241, 7501), (242, 7504), (261, 7615), (268, 7651), (274, 7684), (276, 7693), (281, 7729),

Gene: HokkenD_7 Start: 5399, Stop: 6622, Start Num: 21

Candidate Starts for HokkenD_7:

(Start: 21 @5399 has 66 MA's), (64, 5525), (99, 5696), (101, 5702), (125, 5780), (156, 5885), (163, 5918), (164, 5921), (166, 5927), (173, 5969), (176, 5990), (200, 6119), (201, 6122), (215, 6215), (218, 6239), (242, 6350), (268, 6497), (276, 6536), (278, 6545), (280, 6560),

Gene: Horacetta_4 Start: 2659, Stop: 3786, Start Num: 30

Candidate Starts for Horacetta_4:

(Start: 30 @2659 has 109 MA's), (52, 2728), (Start: 63 @2770 has 13 MA's), (68, 2794), (80, 2869), (101, 2941), (102, 2944), (103, 2950), (109, 2983), (125, 3019), (155, 3112), (156, 3115), (168, 3166), (179, 3244), (182, 3256), (191, 3298), (200, 3349), (213, 3430), (219, 3472), (233, 3553), (263, 3703),

Gene: Huffy_10 Start: 5301, Stop: 6593, Start Num: 19

Candidate Starts for Huffy_10:

(4, 5223), (Start: 19 @5301 has 8 MA's), (Start: 21 @5310 has 66 MA's), (56, 5406), (68, 5460), (101, 5616), (107, 5652), (118, 5691), (128, 5715), (144, 5763), (145, 5766), (153, 5796), (155, 5811), (156, 5814), (167, 5856), (193, 6012), (203, 6084), (218, 6189), (221, 6201), (222, 6225), (235, 6279), (243, 6309), (244, 6315), (262, 6426),

Gene: Hughesyang_11 Start: 6011, Stop: 7234, Start Num: 21

Candidate Starts for Hughesyang_11:

(Start: 21 @6011 has 66 MA's), (64, 6137), (99, 6308), (101, 6314), (125, 6392), (156, 6497), (163, 6530), (164, 6533), (166, 6539), (173, 6581), (176, 6602), (200, 6731), (201, 6734), (215, 6827), (218, 6851), (242, 6962), (268, 7109), (276, 7148), (278, 7157), (280, 7172),

Gene: Hulk_4 Start: 2782, Stop: 3798, Start Num: 63

Candidate Starts for Hulk_4:

(Start: 30 @2671 has 109 MA's), (52, 2740), (Start: 63 @2782 has 13 MA's), (68, 2806), (80, 2881), (101, 2953), (103, 2962), (109, 2995), (125, 3031), (155, 3124), (156, 3127), (168, 3178), (179, 3256), (182, 3268), (191, 3310), (199, 3358), (200, 3361), (210, 3412), (213, 3442), (219, 3484), (233, 3565), (263, 3715),

Gene: JRok_4 Start: 2656, Stop: 3783, Start Num: 30

Candidate Starts for JRok_4:

(Start: 23 @2641 has 1 MA's), (Start: 30 @2656 has 109 MA's), (52, 2725), (Start: 63 @2767 has 13 MA's), (68, 2791), (80, 2866), (101, 2938), (102, 2941), (103, 2947), (109, 2980), (125, 3016), (146, 3064), (155, 3109), (156, 3112), (168, 3163), (179, 3241), (182, 3253), (191, 3295), (199, 3343), (200, 3346), (210, 3397), (213, 3427), (219, 3469), (223, 3511), (233, 3550), (263, 3700),

Gene: Jahseh_4 Start: 2659, Stop: 3786, Start Num: 30

Candidate Starts for Jahseh_4:

(Start: 30 @2659 has 109 MA's), (52, 2728), (Start: 63 @2770 has 13 MA's), (68, 2794), (80, 2869), (101, 2941), (102, 2944), (103, 2950), (109, 2983), (125, 3019), (155, 3112), (156, 3115), (168, 3166), (179, 3244), (182, 3256), (191, 3298), (200, 3349), (213, 3430), (219, 3472), (233, 3553), (263, 3703),

Gene: JaimeB_4 Start: 2782, Stop: 3798, Start Num: 63

Candidate Starts for JaimeB_4:

(Start: 30 @2671 has 109 MA's), (52, 2740), (Start: 63 @2782 has 13 MA's), (68, 2806), (80, 2881), (101, 2953), (102, 2956), (103, 2962), (109, 2995), (125, 3031), (155, 3124), (156, 3127), (168, 3178), (179, 3256), (182, 3268), (191, 3310), (200, 3361), (213, 3442), (219, 3484), (233, 3565), (263, 3715),

Gene: Jamie19_4 Start: 2263, Stop: 3552, Start Num: 22

Candidate Starts for Jamie19_4:

(Start: 22 @2263 has 51 MA's), (34, 2299), (51, 2350), (58, 2356), (65, 2392), (68, 2404), (79, 2482), (100, 2557), (118, 2629), (122, 2638), (123, 2644), (126, 2650), (128, 2653), (155, 2740), (175, 2839), (178, 2854), (180, 2872), (203, 3010), (210, 3046), (218, 3115), (220, 3124), (225, 3169), (235, 3205), (243, 3235), (258, 3331), (262, 3358), (276, 3430),

Gene: Jannah_4 Start: 2659, Stop: 3786, Start Num: 30

Candidate Starts for Jannah_4:

(Start: 30 @2659 has 109 MA's), (52, 2728), (Start: 63 @2770 has 13 MA's), (68, 2794), (80, 2869), (101, 2941), (102, 2944), (103, 2950), (109, 2983), (125, 3019), (155, 3112), (156, 3115), (168, 3166), (179, 3244), (182, 3256), (191, 3298), (200, 3349), (213, 3430), (219, 3472), (233, 3553), (263, 3703),

Gene: Jerky_4 Start: 2740, Stop: 3867, Start Num: 30

Candidate Starts for Jerky_4:

(Start: 23 @2725 has 1 MA's), (Start: 30 @2740 has 109 MA's), (52, 2809), (Start: 63 @2851 has 13 MA's), (68, 2875), (80, 2950), (101, 3022), (102, 3025), (103, 3031), (109, 3064), (155, 3193), (156, 3196), (168, 3247), (179, 3325), (182, 3337), (191, 3379), (200, 3430), (210, 3481), (213, 3511), (219, 3553), (233, 3634), (263, 3784),

Gene: JoBros_4 Start: 2660, Stop: 3787, Start Num: 30

Candidate Starts for JoBros_4:

(Start: 30 @2660 has 109 MA's), (52, 2729), (Start: 63 @2771 has 13 MA's), (68, 2795), (80, 2870), (101, 2942), (102, 2945), (103, 2951), (109, 2984), (125, 3020), (155, 3113), (156, 3116), (168, 3167), (179, 3245), (182, 3257), (191, 3299), (200, 3350), (213, 3431), (219, 3473), (233, 3554), (263, 3704),

Gene: Jojo24_4 Start: 2354, Stop: 3649, Start Num: 23

Candidate Starts for Jojo24_4:

(Start: 22 @2351 has 51 MA's), (Start: 23 @2354 has 1 MA's), (31, 2378), (38, 2408), (65, 2480), (88, 2597), (120, 2729), (126, 2747), (169, 2903), (180, 2975), (203, 3116), (206, 3125), (208, 3137), (210, 3152), (217, 3209), (218, 3221), (225, 3275), (226, 3278), (228, 3293), (235, 3311), (240, 3332), (262, 3458),

Gene: JooneeDee_4 Start: 2689, Stop: 3816, Start Num: 30

Candidate Starts for JooneeDee_4:

(Start: 30 @2689 has 109 MA's), (52, 2758), (Start: 62 @2794 has 2 MA's), (Start: 63 @2800 has 13 MA's), (68, 2824), (80, 2899), (101, 2971), (102, 2974), (103, 2980), (109, 3013), (125, 3049), (155, 3142), (156, 3145), (168, 3196), (179, 3274), (182, 3286), (191, 3328), (200, 3379), (213, 3460), (219, 3502), (227, 3568), (233, 3583), (263, 3733),

Gene: Josuke_4 Start: 2671, Stop: 3798, Start Num: 30

Candidate Starts for Josuke_4:

(Start: 30 @2671 has 109 MA's), (52, 2740), (Start: 62 @2776 has 2 MA's), (Start: 63 @2782 has 13 MA's), (68, 2806), (80, 2881), (101, 2953), (102, 2956), (103, 2962), (109, 2995), (125, 3031), (155, 3124), (156, 3127), (168, 3178), (179, 3256), (182, 3268), (191, 3310), (200, 3361), (213, 3442), (219, 3484), (233, 3565), (263, 3715),

Gene: Journey_4 Start: 2249, Stop: 3538, Start Num: 22

Candidate Starts for Journey_4:

(Start: 22 @2249 has 51 MA's), (51, 2336), (58, 2342), (65, 2378), (68, 2390), (79, 2468), (100, 2543), (123, 2630), (175, 2825), (178, 2840), (186, 2882), (203, 2996), (218, 3101), (220, 3110), (225, 3155), (235, 3191), (243, 3221), (262, 3344), (276, 3416), (277, 3422),

Gene: JuicyJay_13 Start: 6661, Stop: 7884, Start Num: 21

Candidate Starts for JuicyJay_13:

(Start: 21 @6661 has 66 MA's), (64, 6787), (99, 6958), (101, 6964), (125, 7042), (156, 7147), (163, 7180), (164, 7183), (166, 7189), (173, 7231), (176, 7252), (200, 7381), (201, 7384), (215, 7477), (218, 7501), (242, 7612), (268, 7759), (276, 7798), (278, 7807), (280, 7822),

Gene: Kaijohn_4 Start: 2665, Stop: 3792, Start Num: 30

Candidate Starts for Kaijohn_4:

(Start: 23 @2650 has 1 MA's), (Start: 30 @2665 has 109 MA's), (52, 2734), (Start: 62 @2770 has 2 MA's), (Start: 63 @2776 has 13 MA's), (68, 2800), (80, 2875), (101, 2947), (102, 2950), (103, 2956), (109, 2989), (125, 3025), (155, 3118), (156, 3121), (168, 3172), (179, 3250), (182, 3262), (191, 3304), (199, 3352), (200, 3355), (210, 3406), (213, 3436), (219, 3478), (233, 3559), (263, 3709),

Gene: Kalah2_12 Start: 6430, Stop: 7653, Start Num: 21

Candidate Starts for Kalah2_12:

(Start: 21 @6430 has 66 MA's), (64, 6556), (99, 6727), (101, 6733), (125, 6811), (156, 6916), (163, 6949), (164, 6952), (166, 6958), (173, 7000), (176, 7021), (200, 7150), (201, 7153), (215, 7246), (218, 7270), (242, 7381), (268, 7528), (276, 7567), (278, 7576), (280, 7591),

Gene: KashFlow_6 Start: 3680, Stop: 4915, Start Num: 21

Candidate Starts for KashFlow_6:

(Start: 21 @3680 has 66 MA's), (75, 3866), (90, 3935), (99, 3983), (101, 3989), (125, 4067), (156, 4175), (163, 4208), (164, 4211), (166, 4217), (187, 4331), (190, 4352), (200, 4409), (201, 4412), (215, 4505), (218, 4529), (224, 4580), (227, 4595), (233, 4610), (262, 4754), (276, 4826), (278, 4835),

Gene: KayPaulus_4 Start: 2656, Stop: 3783, Start Num: 30

Candidate Starts for KayPaulus_4:

(Start: 20 @2629 has 1 MA's), (Start: 30 @2656 has 109 MA's), (52, 2725), (Start: 62 @2761 has 2 MA's), (Start: 63 @2767 has 13 MA's), (68, 2791), (80, 2866), (101, 2938), (102, 2941), (103, 2947), (109, 2980), (125, 3016), (146, 3064), (155, 3109), (156, 3112), (168, 3163), (179, 3241), (182, 3253), (191, 3295), (200, 3346), (213, 3427), (219, 3469), (233, 3550), (263, 3700),

Gene: Kevanna_4 Start: 2656, Stop: 3783, Start Num: 30

Candidate Starts for Kevanna_4:

(Start: 20 @2629 has 1 MA's), (Start: 30 @2656 has 109 MA's), (52, 2725), (Start: 62 @2761 has 2 MA's), (Start: 63 @2767 has 13 MA's), (68, 2791), (80, 2866), (101, 2938), (102, 2941), (103, 2947), (109, 2980), (125, 3016), (155, 3109), (156, 3112), (168, 3163), (179, 3241), (182, 3253), (191, 3295), (200, 3346), (213, 3427), (219, 3469), (233, 3550), (263, 3700),

Gene: Kevin1_4 Start: 2249, Stop: 3535, Start Num: 22

Candidate Starts for Kevin1_4:

(Start: 22 @2249 has 51 MA's), (51, 2336), (58, 2342), (65, 2378), (68, 2390), (100, 2543), (118, 2615), (155, 2726), (156, 2729), (170, 2795), (171, 2798), (175, 2825), (178, 2840), (186, 2882), (203, 2996), (218, 3101), (225, 3155), (226, 3158), (235, 3191), (243, 3221), (262, 3344), (272, 3404),

Gene: Khuang_3 Start: 1991, Stop: 3505, Start Num: 18

Candidate Starts for Khuang_3:

(13, 1979), (15, 1982), (17, 1985), (18, 1991), (42, 2072), (48, 2090), (61, 2132), (67, 2162), (86, 2255), (101, 2318), (110, 2357), (130, 2411), (144, 2456), (194, 2708), (203, 2774), (211, 2819), (217, 2867), (218, 2879), (220, 2888), (222, 2915), (230, 2960), (235, 2969), (245, 3005), (257, 3086), (258, 3089), (269, 3158), (285, 3299), (286, 3323), (289, 3389), (291, 3446), (292, 3476), (293, 3479),

Gene: KillerTomato_4 Start: 2710, Stop: 3837, Start Num: 30

Candidate Starts for KillerTomato_4:

(Start: 20 @2683 has 1 MA's), (Start: 30 @2710 has 109 MA's), (52, 2779), (Start: 62 @2815 has 2 MA's), (Start: 63 @2821 has 13 MA's), (68, 2845), (80, 2920), (101, 2992), (102, 2995), (103, 3001), (109, 3034), (125, 3070), (146, 3118), (155, 3163), (156, 3166), (168, 3217), (179, 3295), (182, 3307), (191, 3349), (199, 3397), (200, 3400), (210, 3451), (213, 3481), (219, 3523), (233, 3604), (263, 3754),

Gene: Klein_12 Start: 5407, Stop: 6630, Start Num: 21

Candidate Starts for Klein_12:

(Start: 21 @5407 has 66 MA's), (64, 5533), (99, 5704), (101, 5710), (125, 5788), (156, 5893), (163, 5926), (164, 5929), (166, 5935), (173, 5977), (176, 5998), (200, 6127), (201, 6130), (215, 6223), (218, 6247), (242, 6358), (268, 6505), (276, 6544), (278, 6553), (280, 6568),

Gene: Kojax4_4 Start: 2776, Stop: 3798, Start Num: 62

Candidate Starts for Kojax4_4:

(Start: 30 @2671 has 109 MA's), (52, 2740), (Start: 62 @2776 has 2 MA's), (Start: 63 @2782 has 13 MA's), (68, 2806), (80, 2881), (101, 2953), (102, 2956), (103, 2962), (109, 2995), (125, 3031), (155, 3124), (156, 3127), (168, 3178), (179, 3256), (182, 3268), (191, 3310), (200, 3361), (213, 3442), (219, 3484), (233, 3565), (263, 3715),

Gene: KyriosFaba_4 Start: 2659, Stop: 3786, Start Num: 30

Candidate Starts for KyriosFaba_4:

(Start: 30 @2659 has 109 MA's), (52, 2728), (Start: 63 @2770 has 13 MA's), (68, 2794), (80, 2869), (101, 2941), (102, 2944), (103, 2950), (109, 2983), (155, 3112), (156, 3115), (168, 3166), (179, 3244), (182, 3256), (191, 3298), (200, 3349), (213, 3430), (219, 3472), (233, 3553), (263, 3703),

Gene: LaviMo_4 Start: 2671, Stop: 3798, Start Num: 30

Candidate Starts for LaviMo_4:

(Start: 30 @2671 has 109 MA's), (52, 2740), (Start: 62 @2776 has 2 MA's), (Start: 63 @2782 has 13 MA's), (68, 2806), (80, 2881), (101, 2953), (102, 2956), (103, 2962), (109, 2995), (125, 3031), (155, 3124), (156, 3127), (168, 3178), (179, 3256), (182, 3268), (191, 3310), (200, 3361), (213, 3442), (219, 3484), (233, 3565), (263, 3715),

Gene: Leafy_4 Start: 2677, Stop: 3804, Start Num: 30

Candidate Starts for Leafy_4:

(Start: 20 @2650 has 1 MA's), (Start: 30 @2677 has 109 MA's), (52, 2746), (Start: 62 @2782 has 2 MA's), (Start: 63 @2788 has 13 MA's), (68, 2812), (80, 2887), (101, 2959), (102, 2962), (103, 2968), (109, 3001), (125, 3037), (155, 3130), (156, 3133), (168, 3184), (179, 3262), (182, 3274), (191, 3316), (199, 3364), (200, 3367), (210, 3418), (213, 3448), (219, 3490), (233, 3571), (263, 3721),

Gene: LemonPepper_4 Start: 2659, Stop: 3786, Start Num: 30

Candidate Starts for LemonPepper_4:

(Start: 30 @2659 has 109 MA's), (52, 2728), (Start: 63 @2770 has 13 MA's), (68, 2794), (80, 2869), (101, 2941), (102, 2944), (103, 2950), (109, 2983), (125, 3019), (155, 3112), (156, 3115), (168, 3166), (179, 3244), (182, 3256), (191, 3298), (200, 3349), (213, 3430), (219, 3472), (233, 3553), (263, 3703),

Gene: Lilbooboo_3 Start: 2201, Stop: 3571, Start Num: 21

Candidate Starts for Lilbooboo_3:

(12, 2165), (Start: 21 @2201 has 66 MA's), (66, 2354), (95, 2498), (115, 2591), (119, 2603), (132, 2633), (135, 2639), (136, 2642), (152, 2708), (158, 2750), (159, 2753), (179, 2864), (182, 2876), (183, 2879), (185, 2885), (188, 2897), (190, 2912), (208, 3014), (217, 3086), (229, 3167), (251, 3254), (256, 3302), (264, 3353), (268, 3371), (270, 3392), (275, 3410),

Gene: LionelHutz_4 Start: 2671, Stop: 3798, Start Num: 30

Candidate Starts for LionelHutz_4:

(Start: 30 @2671 has 109 MA's), (52, 2740), (Start: 63 @2782 has 13 MA's), (68, 2806), (80, 2881), (101, 2953), (102, 2956), (103, 2962), (109, 2995), (125, 3031), (155, 3124), (156, 3127), (168, 3178), (179, 3256), (182, 3268), (191, 3310), (200, 3361), (213, 3442), (219, 3484), (233, 3565), (263, 3715),

Gene: LittleE_11 Start: 5813, Stop: 7042, Start Num: 21

Candidate Starts for LittleE_11:

(Start: 21 @5813 has 66 MA's), (59, 5906), (64, 5939), (99, 6110), (100, 6113), (101, 6116), (125, 6194), (156, 6305), (160, 6326), (164, 6341), (166, 6347), (187, 6461), (190, 6482), (200, 6539), (201, 6542), (215, 6635), (218, 6659), (227, 6725), (255, 6836), (259, 6863), (274, 6947), (276, 6956), (280, 6980),

Gene: Livingwater_4 Start: 2656, Stop: 3783, Start Num: 30

Candidate Starts for Livingwater_4:

(Start: 20 @2629 has 1 MA's), (Start: 30 @2656 has 109 MA's), (52, 2725), (Start: 62 @2761 has 2 MA's), (Start: 63 @2767 has 13 MA's), (68, 2791), (80, 2866), (101, 2938), (102, 2941), (103, 2947), (109, 2980), (125, 3016), (146, 3064), (155, 3109), (156, 3112), (168, 3163), (179, 3241), (182, 3253), (191, 3295), (200, 3346), (213, 3427), (219, 3469), (233, 3550), (263, 3700),

Gene: Loca_4 Start: 2677, Stop: 3804, Start Num: 30

Candidate Starts for Loca_4:

(Start: 20 @2650 has 1 MA's), (Start: 30 @2677 has 109 MA's), (52, 2746), (Start: 62 @2782 has 2 MA's), (Start: 63 @2788 has 13 MA's), (68, 2812), (80, 2887), (101, 2959), (102, 2962), (103, 2968), (109, 3001), (125, 3037), (155, 3130), (156, 3133), (168, 3184), (179, 3262), (191, 3316), (199, 3364), (200, 3367), (210, 3418), (213, 3448), (219, 3490), (223, 3532), (233, 3571), (263, 3721),

Gene: Lola20_4 Start: 2656, Stop: 3783, Start Num: 30

Candidate Starts for Lola20_4:

(Start: 30 @2656 has 109 MA's), (52, 2725), (Start: 63 @2767 has 13 MA's), (68, 2791), (80, 2866), (101, 2938), (102, 2941), (103, 2947), (109, 2980), (125, 3016), (155, 3109), (156, 3112), (168, 3163), (179, 3241), (182, 3253), (191, 3295), (200, 3346), (213, 3427), (219, 3469), (233, 3550), (263, 3700),

Gene: Lton_4 Start: 2174, Stop: 3487, Start Num: 22

Candidate Starts for Lton_4:

(Start: 22 @2174 has 51 MA's), (31, 2201), (42, 2243), (51, 2264), (61, 2300), (65, 2321), (68, 2333), (86, 2432), (88, 2441), (89, 2444), (97, 2483), (101, 2495), (118, 2561), (120, 2564), (126, 2582), (128, 2585), (156, 2675), (170, 2741), (180, 2804), (203, 2942), (210, 2978), (217, 3035), (218, 3047), (219, 3050), (225, 3101), (235, 3137), (260, 3275), (262, 3290), (263, 3296), (277, 3368),

Gene: Lucky2013_12 Start: 5184, Stop: 6413, Start Num: 21

Candidate Starts for Lucky2013_12:

(Start: 21 @5184 has 66 MA's), (59, 5277), (64, 5310), (99, 5481), (100, 5484), (101, 5487), (125, 5565), (156, 5676), (160, 5697), (164, 5712), (166, 5718), (187, 5832), (190, 5853), (200, 5910), (201, 5913), (215, 6006), (218, 6030), (227, 6096), (255, 6207), (259, 6234), (274, 6318), (276, 6327), (280, 6351),

Gene: Lunatic_4 Start: 2647, Stop: 3774, Start Num: 30

Candidate Starts for Lunatic_4:

(Start: 30 @2647 has 109 MA's), (52, 2716), (Start: 62 @2752 has 2 MA's), (Start: 63 @2758 has 13 MA's), (68, 2782), (80, 2857), (101, 2929), (102, 2932), (103, 2938), (109, 2971), (125, 3007), (155, 3100), (156, 3103), (168, 3154), (179, 3232), (182, 3244), (191, 3286), (200, 3337), (213, 3418), (219, 3460), (227, 3526), (233, 3541), (263, 3691),

Gene: Luxx_4 Start: 2794, Stop: 3810, Start Num: 63

Candidate Starts for Luxx_4:

(Start: 20 @2656 has 1 MA's), (Start: 30 @2683 has 109 MA's), (52, 2752), (Start: 63 @2794 has 13 MA's), (68, 2818), (80, 2893), (101, 2965), (102, 2968), (103, 2974), (109, 3007), (125, 3043), (155, 3136), (156, 3139), (168, 3190), (179, 3268), (182, 3280), (191, 3322), (200, 3373), (213, 3454), (219, 3496), (233, 3577), (263, 3727),

Gene: Magsby_4 Start: 2249, Stop: 3538, Start Num: 22

Candidate Starts for Magsby_4:

(Start: 22 @2249 has 51 MA's), (51, 2336), (58, 2342), (65, 2378), (68, 2390), (79, 2468), (100, 2543), (123, 2630), (175, 2825), (178, 2840), (186, 2882), (203, 2996), (218, 3101), (220, 3110), (225, 3155), (235, 3191), (243, 3221), (262, 3344), (276, 3416), (277, 3422),

Gene: Mahdia_3 Start: 2134, Stop: 3525, Start Num: 21

Candidate Starts for Mahdia_3:

(Start: 21 @2134 has 66 MA's), (26, 2143), (44, 2206), (72, 2308), (101, 2443), (110, 2488), (114, 2509), (117, 2518), (133, 2554), (137, 2563), (143, 2590), (203, 2917), (207, 2932), (214, 2992), (218, 3022), (221, 3034), (225, 3076), (226, 3079), (240, 3133), (244, 3148), (250, 3178), (257, 3235), (260, 3250), (262, 3265), (269, 3307), (287, 3463),

Gene: Majesty_4 Start: 2671, Stop: 3798, Start Num: 30

Candidate Starts for Majesty_4:

(Start: 30 @2671 has 109 MA's), (52, 2740), (Start: 63 @2782 has 13 MA's), (68, 2806), (80, 2881), (101, 2953), (102, 2956), (103, 2962), (109, 2995), (125, 3031), (155, 3124), (156, 3127), (168, 3178), (179, 3256), (182, 3268), (191, 3310), (200, 3361), (213, 3442), (219, 3484), (233, 3565), (263, 3715),

Gene: ManAs_4 Start: 2659, Stop: 3786, Start Num: 30

Candidate Starts for ManAs_4:

(Start: 30 @2659 has 109 MA's), (52, 2728), (Start: 63 @2770 has 13 MA's), (68, 2794), (80, 2869), (101, 2941), (102, 2944), (103, 2950), (109, 2983), (125, 3019), (155, 3112), (156, 3115), (168, 3166), (179, 3244), (182, 3256), (191, 3298), (200, 3349), (213, 3430), (219, 3472), (233, 3553), (263, 3703),

Gene: Maneater_4 Start: 2758, Stop: 3774, Start Num: 63

Candidate Starts for Maneater_4:

(Start: 30 @2647 has 109 MA's), (52, 2716), (Start: 63 @2758 has 13 MA's), (68, 2782), (80, 2857), (101, 2929), (102, 2932), (103, 2938), (109, 2971), (125, 3007), (155, 3100), (156, 3103), (168, 3154), (179, 3232), (182, 3244), (191, 3286), (200, 3337), (210, 3388), (213, 3418), (219, 3460), (233, 3541), (263, 3691),

Gene: MasterPitts_4 Start: 2671, Stop: 3798, Start Num: 30

Candidate Starts for MasterPitts_4:

(Start: 30 @2671 has 109 MA's), (52, 2740), (Start: 62 @2776 has 2 MA's), (Start: 63 @2782 has 13 MA's), (68, 2806), (80, 2881), (101, 2953), (102, 2956), (103, 2962), (109, 2995), (125, 3031), (155, 3124), (156, 3127), (168, 3178), (179, 3256), (182, 3268), (191, 3310), (200, 3361), (213, 3442), (219, 3484), (233, 3565), (263, 3715),

Gene: McShie_4 Start: 2656, Stop: 3783, Start Num: 30

Candidate Starts for McShie_4:

(Start: 23 @2641 has 1 MA's), (Start: 30 @2656 has 109 MA's), (52, 2725), (Start: 63 @2767 has 13 MA's), (68, 2791), (80, 2866), (101, 2938), (102, 2941), (103, 2947), (109, 2980), (125, 3016), (146, 3064), (155, 3109), (156, 3112), (168, 3163), (179, 3241), (182, 3253), (191, 3295), (199, 3343), (200, 3346), (213, 3427), (219, 3469), (223, 3511), (233, 3550), (263, 3700),

Gene: MelBee03_4 Start: 2656, Stop: 3783, Start Num: 30

Candidate Starts for MelBee03_4:

(Start: 20 @2629 has 1 MA's), (Start: 30 @2656 has 109 MA's), (52, 2725), (Start: 62 @2761 has 2 MA's), (Start: 63 @2767 has 13 MA's), (68, 2791), (80, 2866), (101, 2938), (102, 2941), (103, 2947), (109, 2980), (125, 3016), (155, 3109), (156, 3112), (168, 3163), (179, 3241), (182, 3253), (191, 3295), (200, 3346), (213, 3427), (219, 3469), (233, 3550), (263, 3700),

Gene: Melville_4 Start: 2249, Stop: 3538, Start Num: 22

Candidate Starts for Melville_4:

(Start: 22 @2249 has 51 MA's), (51, 2336), (58, 2342), (65, 2378), (68, 2390), (79, 2468), (100, 2543), (123, 2630), (175, 2825), (178, 2840), (186, 2882), (203, 2996), (218, 3101), (220, 3110), (225, 3155), (235, 3191), (243, 3221), (262, 3344), (276, 3416), (277, 3422),

Gene: MiaZeal_12 Start: 5253, Stop: 6488, Start Num: 21

Candidate Starts for MiaZeal_12:

(Start: 21 @5253 has 66 MA's), (75, 5439), (90, 5508), (99, 5556), (101, 5562), (125, 5640), (156, 5748), (163, 5781), (164, 5784), (166, 5790), (187, 5904), (190, 5925), (200, 5982), (201, 5985), (215, 6078), (218, 6102), (224, 6153), (227, 6168), (233, 6183), (262, 6327), (276, 6399), (278, 6408),

Gene: Miaurora_4 Start: 2764, Stop: 3891, Start Num: 30

Candidate Starts for Miaurora_4:

(Start: 30 @2764 has 109 MA's), (52, 2833), (Start: 62 @2869 has 2 MA's), (Start: 63 @2875 has 13 MA's), (68, 2899), (80, 2974), (101, 3046), (102, 3049), (103, 3055), (109, 3088), (125, 3124), (155, 3217), (156, 3220), (168, 3271), (179, 3349), (182, 3361), (191, 3403), (200, 3454), (213, 3535), (219, 3577), (227, 3643), (233, 3658), (263, 3808),

Gene: MichelleMyBell_4 Start: 2263, Stop: 3549, Start Num: 22

Candidate Starts for MichelleMyBell_4:

(Start: 22 @2263 has 51 MA's), (51, 2350), (58, 2356), (65, 2392), (68, 2404), (100, 2557), (118, 2629), (155, 2740), (170, 2809), (171, 2812), (175, 2839), (178, 2854), (186, 2896), (203, 3010), (218, 3115), (225, 3169), (235, 3205), (243, 3235), (262, 3358), (272, 3418),

Gene: Minerva_11 Start: 5890, Stop: 7113, Start Num: 21

Candidate Starts for Minerva_11:

(Start: 21 @5890 has 66 MA's), (64, 6016), (99, 6187), (101, 6193), (125, 6271), (156, 6376), (163, 6409), (164, 6412), (166, 6418), (173, 6460), (176, 6481), (200, 6610), (201, 6613), (215, 6706), (218, 6730), (242, 6841), (268, 6988), (276, 7027), (278, 7036), (280, 7051),

Gene: Minima_4 Start: 2659, Stop: 3786, Start Num: 30

Candidate Starts for Minima_4:

(Start: 30 @2659 has 109 MA's), (52, 2728), (Start: 63 @2770 has 13 MA's), (68, 2794), (80, 2869), (101, 2941), (102, 2944), (103, 2950), (109, 2983), (125, 3019), (155, 3112), (156, 3115), (168, 3166), (179, 3244), (182, 3256), (191, 3298), (200, 3349), (213, 3430), (219, 3472), (233, 3553), (263, 3703),

Gene: MirimarMandM_4 Start: 2689, Stop: 3858, Start Num: 30

Candidate Starts for MirimarMandM_4:

(Start: 30 @2689 has 109 MA's), (52, 2758), (Start: 62 @2794 has 2 MA's), (Start: 63 @2800 has 13 MA's), (68, 2824), (80, 2899), (101, 2971), (102, 2974), (103, 2980), (109, 3013), (125, 3049), (155, 3142), (156, 3145), (168, 3196), (179, 3274), (182, 3286), (191, 3328), (200, 3379), (213, 3460), (219, 3502), (227, 3568), (233, 3583), (262, 3727), (263, 3733),

Gene: Moosehead_4 Start: 2170, Stop: 3477, Start Num: 22

Candidate Starts for Moosehead_4:

(Start: 22 @2170 has 51 MA's), (Start: 23 @2173 has 1 MA's), (37, 2221), (38, 2227), (47, 2248), (50, 2260), (51, 2263), (68, 2332), (97, 2476), (101, 2488), (109, 2530), (118, 2554), (126, 2575), (141, 2614), (144, 2623), (155, 2665), (168, 2716), (170, 2734), (180, 2797), (197, 2905), (203, 2935), (216, 3019), (217, 3028), (218, 3040), (225, 3094), (232, 3124), (235, 3130), (254, 3223), (262, 3283),

Gene: Morrissey_3 Start: 2106, Stop: 3524, Start Num: 21

Candidate Starts for Morrissey_3:

(Start: 21 @2106 has 66 MA's), (24, 2112), (26, 2115), (38, 2163), (54, 2202), (65, 2250), (74, 2298), (108, 2457), (110, 2463), (128, 2520), (140, 2553), (143, 2565), (149, 2586), (161, 2643), (174, 2712), (203, 2892), (207, 2907), (211, 2937), (214, 2967), (218, 2997), (219, 3000), (225, 3051), (226, 3054), (245, 3126), (257, 3210), (260, 3225), (267, 3267), (269, 3282),

Gene: MrGreen_4 Start: 2677, Stop: 3804, Start Num: 30

Candidate Starts for MrGreen_4:

(Start: 20 @2650 has 1 MA's), (Start: 30 @2677 has 109 MA's), (52, 2746), (Start: 62 @2782 has 2 MA's), (Start: 63 @2788 has 13 MA's), (68, 2812), (80, 2887), (101, 2959), (102, 2962), (103, 2968), (109, 3001), (125, 3037), (155, 3130), (156, 3133), (168, 3184), (179, 3262), (182, 3274), (191, 3316), (199, 3364), (200, 3367), (210, 3418), (213, 3448), (219, 3490), (233, 3571), (263, 3721),

Gene: Naby_4 Start: 2373, Stop: 3533, Start Num: 30

Candidate Starts for Naby_4:

(Start: 22 @2355 has 51 MA's), (27, 2364), (Start: 30 @2373 has 109 MA's), (Start: 63 @2484 has 13 MA's), (68, 2508), (82, 2586), (101, 2655), (103, 2664), (109, 2697), (146, 2781), (156, 2829), (179, 2958), (182, 2970), (189, 3003), (198, 3057), (200, 3063), (210, 3114), (219, 3186), (227, 3252), (233, 3267), (262, 3411), (263, 3417),

Gene: Namsahir_4 Start: 2680, Stop: 3846, Start Num: 30

Candidate Starts for Namsahir_4:

(Start: 30 @2680 has 109 MA's), (52, 2749), (Start: 62 @2785 has 2 MA's), (Start: 63 @2791 has 13 MA's), (68, 2815), (80, 2890), (101, 2962), (102, 2965), (103, 2971), (109, 3004), (125, 3040), (155, 3133), (156, 3136), (168, 3187), (179, 3265), (182, 3277), (191, 3319), (200, 3370), (213, 3451), (219, 3493), (227, 3559), (233, 3574), (262, 3718), (263, 3724),

Gene: Nенаe_4 Start: 2263, Stop: 3552, Start Num: 22

Candidate Starts for Nенаe_4:

(Start: 22 @2263 has 51 MA's), (34, 2299), (51, 2350), (58, 2356), (65, 2392), (68, 2404), (79, 2482), (100, 2557), (118, 2629), (122, 2638), (123, 2644), (126, 2650), (128, 2653), (155, 2740), (175, 2839), (178, 2854), (180, 2872), (203, 3010), (210, 3046), (218, 3115), (220, 3124), (225, 3169), (235, 3205), (243, 3235), (258, 3331), (262, 3358), (276, 3430),

Gene: NeumannU_4 Start: 2671, Stop: 3798, Start Num: 30

Candidate Starts for NeumannU_4:

(Start: 30 @2671 has 109 MA's), (52, 2740), (Start: 63 @2782 has 13 MA's), (68, 2806), (80, 2881), (101, 2953), (102, 2956), (103, 2962), (109, 2995), (125, 3031), (155, 3124), (156, 3127), (168, 3178), (179, 3256), (182, 3268), (191, 3310), (200, 3361), (213, 3442), (219, 3484), (233, 3565), (263, 3715),

Gene: Niffler_4 Start: 2737, Stop: 3864, Start Num: 30

Candidate Starts for Niffler_4:

(Start: 30 @2737 has 109 MA's), (52, 2806), (Start: 62 @2842 has 2 MA's), (Start: 63 @2848 has 13 MA's), (68, 2872), (80, 2947), (101, 3019), (102, 3022), (103, 3028), (109, 3061), (125, 3097), (155, 3190), (156, 3193), (168, 3244), (179, 3322), (182, 3334), (191, 3376), (200, 3427), (213, 3508), (219, 3550), (227, 3616), (233, 3631), (263, 3781),

Gene: NihilNomen_11 Start: 5890, Stop: 7113, Start Num: 21

Candidate Starts for NihilNomen_11:

(Start: 21 @5890 has 66 MA's), (64, 6016), (99, 6187), (101, 6193), (125, 6271), (156, 6376), (163, 6409), (164, 6412), (166, 6418), (173, 6460), (176, 6481), (200, 6610), (201, 6613), (215, 6706), (218, 6730), (242, 6841), (268, 6988), (276, 7027), (278, 7036), (280, 7051),

Gene: Nobel_4 Start: 2764, Stop: 3891, Start Num: 30

Candidate Starts for Nobel_4:

(Start: 30 @2764 has 109 MA's), (52, 2833), (Start: 62 @2869 has 2 MA's), (Start: 63 @2875 has 13 MA's), (68, 2899), (80, 2974), (101, 3046), (102, 3049), (103, 3055), (109, 3088), (125, 3124), (155, 3217), (156, 3220), (168, 3271), (179, 3349), (182, 3361), (191, 3403), (200, 3454), (213, 3535), (219, 3577), (227, 3643), (233, 3658), (263, 3808),

Gene: Noelani_4 Start: 2647, Stop: 3774, Start Num: 30

Candidate Starts for Noelani_4:

(Start: 30 @2647 has 109 MA's), (52, 2716), (Start: 62 @2752 has 2 MA's), (Start: 63 @2758 has 13 MA's), (68, 2782), (80, 2857), (101, 2929), (102, 2932), (103, 2938), (109, 2971), (125, 3007), (155, 3100), (156, 3103), (168, 3154), (179, 3232), (182, 3244), (191, 3286), (200, 3337), (210, 3388), (213, 3418), (219, 3460), (227, 3526), (233, 3541), (263, 3691),

Gene: Oaklynn_4 Start: 2770, Stop: 3786, Start Num: 63

Candidate Starts for Oaklynn_4:

(Start: 23 @2644 has 1 MA's), (Start: 30 @2659 has 109 MA's), (52, 2728), (Start: 63 @2770 has 13 MA's), (68, 2794), (80, 2869), (101, 2941), (102, 2944), (103, 2950), (109, 2983), (125, 3019), (146, 3067), (155, 3112), (156, 3115), (168, 3166), (179, 3244), (182, 3256), (191, 3298), (199, 3346), (200, 3349), (210, 3400), (213, 3430), (219, 3472), (223, 3514), (233, 3553), (263, 3703),

Gene: Octopus_4 Start: 2659, Stop: 3786, Start Num: 30

Candidate Starts for Octopus_4:

(Start: 30 @2659 has 109 MA's), (52, 2728), (Start: 63 @2770 has 13 MA's), (68, 2794), (80, 2869), (101, 2941), (102, 2944), (103, 2950), (109, 2983), (125, 3019), (155, 3112), (156, 3115), (168, 3166), (179, 3244), (182, 3256), (191, 3298), (200, 3349), (213, 3430), (219, 3472), (233, 3553), (263, 3703),

Gene: Odette_11 Start: 5369, Stop: 6592, Start Num: 21

Candidate Starts for Odette_11:

(Start: 21 @5369 has 66 MA's), (64, 5495), (99, 5666), (101, 5672), (125, 5750), (156, 5855), (163, 5888), (164, 5891), (166, 5897), (173, 5939), (176, 5960), (200, 6089), (201, 6092), (215, 6185), (218, 6209), (242, 6320), (268, 6467), (276, 6506), (278, 6515), (280, 6530),

Gene: Omega_13 Start: 7158, Stop: 8387, Start Num: 21

Candidate Starts for Omega_13:

(Start: 21 @7158 has 66 MA's), (59, 7251), (64, 7284), (98, 7449), (99, 7455), (101, 7461), (125, 7539), (156, 7650), (164, 7686), (166, 7692), (183, 7794), (200, 7884), (201, 7887), (215, 7980), (218, 8004), (227, 8070), (242, 8115), (254, 8169), (259, 8208), (276, 8301), (278, 8310), (280, 8325),

Gene: OneDirection_4 Start: 2171, Stop: 3472, Start Num: 22

Candidate Starts for OneDirection_4:

(Start: 22 @2171 has 51 MA's), (Start: 23 @2174 has 1 MA's), (31, 2198), (37, 2222), (38, 2228), (47, 2249), (50, 2261), (51, 2264), (61, 2300), (68, 2333), (86, 2426), (89, 2438), (97, 2477), (101, 2489), (109, 2531), (118, 2555), (120, 2558), (128, 2579), (141, 2615), (144, 2624), (168, 2717), (170, 2735), (180, 2798), (197, 2906), (203, 2936), (204, 2939), (210, 2972), (216, 3020), (217, 3029), (218, 3041), (219, 3044), (225, 3095), (235, 3131), (240, 3152), (254, 3224), (262, 3284),

Gene: Optimus_9 Start: 5396, Stop: 6619, Start Num: 21

Candidate Starts for Optimus_9:

(Start: 21 @5396 has 66 MA's), (64, 5522), (99, 5693), (101, 5699), (125, 5777), (156, 5882), (163, 5915), (164, 5918), (166, 5924), (173, 5966), (176, 5987), (200, 6116), (201, 6119), (215, 6212), (218, 6236), (242, 6347), (268, 6494), (276, 6533), (278, 6542), (280, 6557),

Gene: Otwor_4 Start: 2671, Stop: 3798, Start Num: 30

Candidate Starts for Otwor_4:

(Start: 30 @2671 has 109 MA's), (52, 2740), (Start: 62 @2776 has 2 MA's), (Start: 63 @2782 has 13 MA's), (68, 2806), (80, 2881), (101, 2953), (102, 2956), (103, 2962), (109, 2995), (125, 3031), (155, 3124), (156, 3127), (168, 3178), (179, 3256), (182, 3268), (191, 3310), (200, 3361), (213, 3442), (219, 3484), (233, 3565), (263, 3715),

Gene: Owens_4 Start: 2671, Stop: 3798, Start Num: 30

Candidate Starts for Owens_4:

(Start: 30 @2671 has 109 MA's), (52, 2740), (Start: 63 @2782 has 13 MA's), (68, 2806), (80, 2881), (101, 2953), (102, 2956), (103, 2962), (109, 2995), (125, 3031), (155, 3124), (156, 3127), (168, 3178), (179, 3256), (182, 3268), (191, 3310), (200, 3361), (213, 3442), (219, 3484), (233, 3565), (263, 3715),

Gene: Panchino_4 Start: 2263, Stop: 3552, Start Num: 22

Candidate Starts for Panchino_4:

(Start: 22 @2263 has 51 MA's), (34, 2299), (51, 2350), (58, 2356), (65, 2392), (68, 2404), (79, 2482), (100, 2557), (118, 2629), (122, 2638), (123, 2644), (126, 2650), (128, 2653), (155, 2740), (175, 2839), (178, 2854), (180, 2872), (203, 3010), (210, 3046), (218, 3115), (220, 3124), (225, 3169), (235, 3205), (243, 3235), (258, 3331), (262, 3358), (276, 3430),

Gene: PaoPu_4 Start: 2659, Stop: 3786, Start Num: 30

Candidate Starts for PaoPu_4:

(Start: 30 @2659 has 109 MA's), (52, 2728), (Start: 63 @2770 has 13 MA's), (68, 2794), (80, 2869), (101, 2941), (102, 2944), (103, 2950), (109, 2983), (125, 3019), (155, 3112), (156, 3115), (168, 3166), (179, 3244), (182, 3256), (191, 3298), (200, 3349), (213, 3430), (219, 3472), (233, 3553), (263, 3703),

Gene: Parmesanjohn_4 Start: 2249, Stop: 3538, Start Num: 22

Candidate Starts for Parmesanjohn_4:

(Start: 22 @2249 has 51 MA's), (51, 2336), (58, 2342), (65, 2378), (68, 2390), (79, 2468), (100, 2543), (123, 2630), (175, 2825), (178, 2840), (186, 2882), (203, 2996), (218, 3101), (220, 3110), (225, 3155), (235, 3191), (243, 3221), (262, 3344), (276, 3416), (277, 3422),

Gene: Pepperoni_4 Start: 2468, Stop: 3781, Start Num: 22

Candidate Starts for Pepperoni_4:

(Start: 22 @2468 has 51 MA's), (31, 2495), (42, 2537), (50, 2555), (51, 2558), (61, 2594), (65, 2615), (68, 2627), (86, 2726), (88, 2735), (89, 2738), (96, 2774), (97, 2777), (101, 2789), (118, 2855), (120, 2858), (126, 2876), (128, 2879), (156, 2969), (170, 3035), (180, 3098), (200, 3221), (203, 3236), (217, 3329), (218, 3341), (219, 3344), (225, 3395), (232, 3425), (235, 3431), (260, 3569), (262, 3584), (263, 3590), (277, 3662),

Gene: PhancyPhin_4 Start: 2263, Stop: 3552, Start Num: 22

Candidate Starts for PhancyPhin_4:

(Start: 22 @2263 has 51 MA's), (34, 2299), (51, 2350), (58, 2356), (65, 2392), (68, 2404), (79, 2482), (100, 2557), (118, 2629), (122, 2638), (123, 2644), (126, 2650), (128, 2653), (155, 2740), (175, 2839), (178, 2854), (180, 2872), (203, 3010), (210, 3046), (218, 3115), (220, 3124), (225, 3169), (235, 3205), (243, 3235), (258, 3331), (262, 3358), (276, 3430),

Gene: Philonius_4 Start: 2249, Stop: 3538, Start Num: 22

Candidate Starts for Philonius_4:

(Start: 22 @2249 has 51 MA's), (51, 2336), (58, 2342), (65, 2378), (68, 2390), (79, 2468), (100, 2543), (123, 2630), (175, 2825), (178, 2840), (186, 2882), (203, 2996), (218, 3101), (220, 3110), (225, 3155), (235, 3191), (243, 3221), (262, 3344), (276, 3416), (277, 3422),

Gene: Phloss_4 Start: 2249, Stop: 3538, Start Num: 22

Candidate Starts for Phloss_4:

(Start: 22 @2249 has 51 MA's), (51, 2336), (58, 2342), (65, 2378), (68, 2390), (79, 2468), (100, 2543), (123, 2630), (155, 2726), (175, 2825), (178, 2840), (186, 2882), (203, 2996), (218, 3101), (220, 3110), (225, 3155), (235, 3191), (243, 3221), (262, 3344), (276, 3416), (277, 3422),

Gene: Phoebus_12 Start: 6116, Stop: 7339, Start Num: 21

Candidate Starts for Phoebus_12:

(Start: 21 @6116 has 66 MA's), (64, 6242), (99, 6413), (101, 6419), (125, 6497), (156, 6602), (163, 6635), (164, 6638), (166, 6644), (173, 6686), (176, 6707), (200, 6836), (201, 6839), (215, 6932), (218, 6956), (242, 7067), (268, 7214), (276, 7253), (278, 7262), (280, 7277),

Gene: Phrann_4 Start: 2263, Stop: 3552, Start Num: 22

Candidate Starts for Phrann_4:

(Start: 22 @2263 has 51 MA's), (34, 2299), (51, 2350), (58, 2356), (65, 2392), (68, 2404), (79, 2482), (100, 2557), (118, 2629), (122, 2638), (123, 2644), (126, 2650), (128, 2653), (155, 2740), (175, 2839), (178, 2854), (180, 2872), (203, 3010), (210, 3046), (218, 3115), (220, 3124), (225, 3169), (235, 3205), (243, 3235), (258, 3331), (262, 3358), (276, 3430),

Gene: Picnic_4 Start: 2659, Stop: 3786, Start Num: 30

Candidate Starts for Picnic_4:

(Start: 30 @2659 has 109 MA's), (52, 2728), (Start: 63 @2770 has 13 MA's), (68, 2794), (80, 2869), (101, 2941), (102, 2944), (103, 2950), (109, 2983), (125, 3019), (155, 3112), (156, 3115), (168, 3166), (179, 3244), (182, 3256), (191, 3298), (200, 3349), (213, 3430), (219, 3472), (233, 3553), (263, 3703),

Gene: Pipsqueaks_4 Start: 2249, Stop: 3538, Start Num: 22

Candidate Starts for Pipsqueaks_4:

(Start: 22 @2249 has 51 MA's), (51, 2336), (58, 2342), (65, 2378), (68, 2390), (79, 2468), (100, 2543), (123, 2630), (175, 2825), (178, 2840), (186, 2882), (203, 2996), (218, 3101), (220, 3110), (225, 3155), (235, 3191), (243, 3221), (262, 3344), (276, 3416), (277, 3422),

Gene: PoRanda_4 Start: 2689, Stop: 3858, Start Num: 30

Candidate Starts for PoRanda_4:

(Start: 30 @2689 has 109 MA's), (52, 2758), (Start: 62 @2794 has 2 MA's), (Start: 63 @2800 has 13 MA's), (68, 2824), (80, 2899), (101, 2971), (102, 2974), (103, 2980), (109, 3013), (125, 3049), (155, 3142), (156, 3145), (168, 3196), (179, 3274), (182, 3286), (191, 3328), (200, 3379), (213, 3460), (219, 3502), (227, 3568), (233, 3583), (262, 3727), (263, 3733),

Gene: Pondwater_4 Start: 2659, Stop: 3786, Start Num: 30

Candidate Starts for Pondwater_4:

(Start: 30 @2659 has 109 MA's), (52, 2728), (Start: 63 @2770 has 13 MA's), (68, 2794), (80, 2869), (101, 2941), (102, 2944), (103, 2950), (109, 2983), (125, 3019), (155, 3112), (156, 3115), (168, 3166), (179, 3244), (182, 3256), (191, 3298), (200, 3349), (213, 3430), (219, 3472), (233, 3553), (263, 3703),

Gene: Porcelain_12 Start: 5253, Stop: 6488, Start Num: 21

Candidate Starts for Porcelain_12:

(Start: 21 @5253 has 66 MA's), (75, 5439), (90, 5508), (99, 5556), (101, 5562), (125, 5640), (156, 5748), (163, 5781), (164, 5784), (166, 5790), (187, 5904), (190, 5925), (200, 5982), (201, 5985), (215, 6078), (218, 6102), (224, 6153), (227, 6168), (233, 6183), (262, 6327), (276, 6399), (278, 6408),

Gene: Pound_11 Start: 5886, Stop: 7109, Start Num: 21

Candidate Starts for Pound_11:

(Start: 21 @5886 has 66 MA's), (64, 6012), (99, 6183), (101, 6189), (125, 6267), (156, 6372), (163, 6405), (164, 6408), (166, 6414), (173, 6456), (176, 6477), (200, 6606), (201, 6609), (215, 6702), (218, 6726), (242, 6837), (268, 6984), (276, 7023), (278, 7032), (280, 7047),

Gene: Publix_4 Start: 2680, Stop: 3846, Start Num: 30

Candidate Starts for Publix_4:

(Start: 30 @2680 has 109 MA's), (52, 2749), (Start: 62 @2785 has 2 MA's), (Start: 63 @2791 has 13 MA's), (68, 2815), (80, 2890), (101, 2962), (102, 2965), (103, 2971), (109, 3004), (125, 3040), (155, 3133), (156, 3136), (168, 3187), (179, 3265), (182, 3277), (191, 3319), (200, 3370), (213, 3451), (219, 3493), (227, 3559), (233, 3574), (262, 3718), (263, 3724),

Gene: Puddles3_4 Start: 2659, Stop: 3786, Start Num: 30

Candidate Starts for Puddles3_4:

(Start: 30 @2659 has 109 MA's), (52, 2728), (Start: 63 @2770 has 13 MA's), (68, 2794), (80, 2869), (101, 2941), (102, 2944), (103, 2950), (109, 2983), (125, 3019), (155, 3112), (156, 3115), (168, 3166),

(179, 3244), (182, 3256), (191, 3298), (200, 3349), (213, 3430), (219, 3472), (233, 3553), (263, 3703),

Gene: PuffyCat_4 Start: 2689, Stop: 3816, Start Num: 30

Candidate Starts for PuffyCat_4:

(Start: 30 @2689 has 109 MA's), (52, 2758), (Start: 62 @2794 has 2 MA's), (Start: 63 @2800 has 13 MA's), (68, 2824), (80, 2899), (101, 2971), (102, 2974), (103, 2980), (109, 3013), (125, 3049), (155, 3142), (156, 3145), (168, 3196), (179, 3274), (182, 3286), (191, 3328), (200, 3379), (213, 3460), (219, 3502), (227, 3568), (233, 3583), (263, 3733),

Gene: Puppies_3 Start: 2078, Stop: 3436, Start Num: 21

Candidate Starts for Puppies_3:

(Start: 21 @2078 has 66 MA's), (26, 2087), (38, 2135), (70, 2243), (89, 2339), (106, 2423), (116, 2462), (152, 2570), (155, 2588), (161, 2615), (168, 2642), (174, 2684), (186, 2747), (203, 2864), (211, 2909), (214, 2939), (218, 2969), (225, 3023), (239, 3077), (262, 3212), (267, 3239),

Gene: Purgamenstris_4 Start: 2263, Stop: 3552, Start Num: 22

Candidate Starts for Purgamenstris_4:

(Start: 22 @2263 has 51 MA's), (34, 2299), (51, 2350), (58, 2356), (65, 2392), (68, 2404), (79, 2482), (100, 2557), (122, 2638), (123, 2644), (126, 2650), (128, 2653), (155, 2740), (175, 2839), (178, 2854), (180, 2872), (203, 3010), (210, 3046), (218, 3115), (220, 3124), (225, 3169), (235, 3205), (243, 3235), (258, 3331), (262, 3358), (276, 3430),

Gene: Quaker_4 Start: 2656, Stop: 3783, Start Num: 30

Candidate Starts for Quaker_4:

(Start: 20 @2629 has 1 MA's), (Start: 30 @2656 has 109 MA's), (52, 2725), (Start: 62 @2761 has 2 MA's), (Start: 63 @2767 has 13 MA's), (68, 2791), (80, 2866), (101, 2938), (102, 2941), (103, 2947), (109, 2980), (125, 3016), (146, 3064), (155, 3109), (156, 3112), (168, 3163), (179, 3241), (182, 3253), (191, 3295), (200, 3346), (213, 3427), (219, 3469), (233, 3550), (263, 3700),

Gene: Raymond7_4 Start: 2263, Stop: 3552, Start Num: 22

Candidate Starts for Raymond7_4:

(Start: 22 @2263 has 51 MA's), (34, 2299), (51, 2350), (58, 2356), (65, 2392), (68, 2404), (79, 2482), (100, 2557), (118, 2629), (122, 2638), (123, 2644), (126, 2650), (128, 2653), (155, 2740), (175, 2839), (178, 2854), (180, 2872), (203, 3010), (210, 3046), (218, 3115), (220, 3124), (225, 3169), (235, 3205), (243, 3235), (258, 3331), (262, 3358), (276, 3430),

Gene: Rebel_4 Start: 2263, Stop: 3552, Start Num: 22

Candidate Starts for Rebel_4:

(Start: 22 @2263 has 51 MA's), (34, 2299), (51, 2350), (58, 2356), (65, 2392), (68, 2404), (79, 2482), (100, 2557), (118, 2629), (122, 2638), (123, 2644), (126, 2650), (128, 2653), (155, 2740), (175, 2839), (178, 2854), (180, 2872), (203, 3010), (210, 3046), (218, 3115), (220, 3124), (225, 3169), (235, 3205), (243, 3235), (258, 3331), (262, 3358), (276, 3430),

Gene: Redi_4 Start: 2263, Stop: 3552, Start Num: 22

Candidate Starts for Redi_4:

(Start: 22 @2263 has 51 MA's), (34, 2299), (51, 2350), (58, 2356), (65, 2392), (68, 2404), (79, 2482), (100, 2557), (118, 2629), (122, 2638), (123, 2644), (126, 2650), (128, 2653), (155, 2740), (175, 2839), (178, 2854), (180, 2872), (203, 3010), (210, 3046), (218, 3115), (220, 3124), (225, 3169), (235, 3205), (243, 3235), (258, 3331), (262, 3358), (276, 3430),

Gene: Redno2_11 Start: 5601, Stop: 6824, Start Num: 21

Candidate Starts for Redno2_11:

(Start: 21 @5601 has 66 MA's), (64, 5727), (99, 5898), (101, 5904), (125, 5982), (156, 6087), (163, 6120), (164, 6123), (166, 6129), (173, 6171), (176, 6192), (200, 6321), (201, 6324), (215, 6417), (218, 6441), (242, 6552), (268, 6699), (276, 6738), (278, 6747), (280, 6762),

Gene: RemusLoopin_3 Start: 2182, Stop: 3525, Start Num: 21

Candidate Starts for RemusLoopin_3:

(11, 2137), (Start: 21 @2182 has 66 MA's), (49, 2260), (Start: 62 @2296 has 2 MA's), (66, 2320), (95, 2464), (115, 2557), (119, 2569), (132, 2599), (135, 2605), (136, 2608), (142, 2629), (158, 2716), (159, 2719), (182, 2842), (188, 2863), (190, 2878), (208, 2980), (211, 3004), (229, 3133), (256, 3268), (260, 3289), (264, 3319), (268, 3337), (270, 3358), (275, 3376), (276, 3382),

Gene: Reyja_5 Start: 2467, Stop: 3768, Start Num: 22

Candidate Starts for Reyja_5:

(Start: 22 @2467 has 51 MA's), (Start: 23 @2470 has 1 MA's), (31, 2494), (38, 2524), (65, 2596), (81, 2689), (88, 2713), (120, 2845), (124, 2860), (126, 2863), (169, 3019), (180, 3091), (203, 3232), (206, 3241), (208, 3253), (210, 3268), (217, 3325), (218, 3337), (225, 3391), (226, 3394), (228, 3409), (235, 3427), (240, 3448), (262, 3574),

Gene: Rhogar_4 Start: 2782, Stop: 3798, Start Num: 63

Candidate Starts for Rhogar_4:

(Start: 30 @2671 has 109 MA's), (52, 2740), (Start: 63 @2782 has 13 MA's), (68, 2806), (80, 2881), (101, 2953), (102, 2956), (103, 2962), (109, 2995), (125, 3031), (155, 3124), (156, 3127), (168, 3178), (179, 3256), (182, 3268), (191, 3310), (200, 3361), (213, 3442), (219, 3484), (233, 3565), (263, 3715),

Gene: Rhysand_4 Start: 2671, Stop: 3798, Start Num: 30

Candidate Starts for Rhysand_4:

(Start: 30 @2671 has 109 MA's), (52, 2740), (Start: 62 @2776 has 2 MA's), (Start: 63 @2782 has 13 MA's), (68, 2806), (80, 2881), (101, 2953), (102, 2956), (103, 2962), (109, 2995), (125, 3031), (155, 3124), (156, 3127), (168, 3178), (179, 3256), (182, 3268), (191, 3310), (200, 3361), (213, 3442), (219, 3484), (233, 3565), (263, 3715),

Gene: RootBeer_4 Start: 2459, Stop: 3739, Start Num: 8

Candidate Starts for RootBeer_4:

(2, 2339), (Start: 8 @2459 has 1 MA's), (Start: 9 @2462 has 1 MA's), (50, 2582), (61, 2615), (68, 2648), (104, 2816), (120, 2879), (155, 2993), (168, 3044), (180, 3125), (203, 3251), (225, 3410), (252, 3515), (257, 3563), (260, 3578), (262, 3593),

Gene: RoscoWindex_4 Start: 2671, Stop: 3798, Start Num: 30

Candidate Starts for RoscoWindex_4:

(Start: 30 @2671 has 109 MA's), (52, 2740), (Start: 62 @2776 has 2 MA's), (Start: 63 @2782 has 13 MA's), (68, 2806), (80, 2881), (101, 2953), (102, 2956), (103, 2962), (109, 2995), (125, 3031), (155, 3124), (156, 3127), (168, 3178), (179, 3256), (182, 3268), (191, 3310), (200, 3361), (213, 3442), (219, 3484), (233, 3565), (263, 3715),

Gene: Rubeelu_4 Start: 2249, Stop: 3535, Start Num: 22

Candidate Starts for Rubeelu_4:

(Start: 22 @2249 has 51 MA's), (51, 2336), (58, 2342), (65, 2378), (68, 2390), (100, 2543), (118, 2615), (155, 2726), (156, 2729), (170, 2795), (171, 2798), (175, 2825), (178, 2840), (186, 2882), (203, 2996), (218, 3101), (225, 3155), (226, 3158), (235, 3191), (243, 3221), (262, 3344), (272, 3404),

Gene: Sage7_4 Start: 2671, Stop: 3798, Start Num: 30

Candidate Starts for Sage7_4:

(Start: 30 @2671 has 109 MA's), (52, 2740), (Start: 62 @2776 has 2 MA's), (Start: 63 @2782 has 13 MA's), (68, 2806), (80, 2881), (101, 2953), (102, 2956), (103, 2962), (109, 2995), (125, 3031), (155, 3124), (156, 3127), (168, 3178), (179, 3256), (182, 3268), (191, 3310), (200, 3361), (213, 3442), (219, 3484), (233, 3565), (263, 3715),

Gene: Samora_3 Start: 2204, Stop: 3595, Start Num: 21

Candidate Starts for Samora_3:

(12, 2168), (Start: 21 @2204 has 66 MA's), (66, 2357), (69, 2366), (95, 2501), (119, 2606), (132, 2636), (135, 2642), (136, 2645), (152, 2711), (158, 2753), (159, 2756), (179, 2867), (182, 2879), (188, 2900), (190, 2915), (208, 3017), (229, 3170), (251, 3257), (256, 3305), (264, 3356), (268, 3374), (270, 3395), (275, 3413),

Gene: SantasSleigh_4 Start: 2695, Stop: 3822, Start Num: 30

Candidate Starts for SantasSleigh_4:

(Start: 30 @2695 has 109 MA's), (52, 2764), (Start: 62 @2800 has 2 MA's), (Start: 63 @2806 has 13 MA's), (68, 2830), (80, 2905), (101, 2977), (102, 2980), (103, 2986), (109, 3019), (125, 3055), (155, 3148), (156, 3151), (168, 3202), (179, 3280), (182, 3292), (191, 3334), (200, 3385), (213, 3466), (219, 3508), (233, 3589), (263, 3739),

Gene: Santhid_4 Start: 2353, Stop: 3651, Start Num: 22

Candidate Starts for Santhid_4:

(Start: 22 @2353 has 51 MA's), (Start: 23 @2356 has 1 MA's), (31, 2380), (38, 2410), (65, 2482), (88, 2599), (120, 2731), (126, 2749), (169, 2905), (180, 2977), (203, 3118), (206, 3127), (208, 3139), (210, 3154), (217, 3211), (218, 3223), (225, 3277), (226, 3280), (228, 3295), (235, 3313), (240, 3334), (262, 3460),

Gene: Sapo_2 Start: 1792, Stop: 3132, Start Num: 21

Candidate Starts for Sapo_2:

(Start: 21 @1792 has 66 MA's), (109, 2155), (143, 2260), (144, 2263), (169, 2374), (189, 2497), (203, 2587), (207, 2602), (214, 2662), (217, 2680), (218, 2692), (219, 2695), (222, 2728), (242, 2809),

Gene: Sara_4 Start: 2659, Stop: 3786, Start Num: 30

Candidate Starts for Sara_4:

(Start: 30 @2659 has 109 MA's), (52, 2728), (Start: 63 @2770 has 13 MA's), (68, 2794), (80, 2869), (101, 2941), (102, 2944), (103, 2950), (109, 2983), (125, 3019), (155, 3112), (156, 3115), (168, 3166), (179, 3244), (182, 3256), (191, 3298), (200, 3349), (213, 3430), (219, 3472), (233, 3553), (263, 3703),

Gene: Scamander_4 Start: 2671, Stop: 3798, Start Num: 30

Candidate Starts for Scamander_4:

(Start: 30 @2671 has 109 MA's), (52, 2740), (Start: 62 @2776 has 2 MA's), (Start: 63 @2782 has 13 MA's), (68, 2806), (80, 2881), (101, 2953), (102, 2956), (103, 2962), (109, 2995), (125, 3031), (155, 3124), (156, 3127), (168, 3178), (179, 3256), (182, 3268), (191, 3310), (200, 3361), (213, 3442), (219, 3484), (233, 3565), (263, 3715),

Gene: Schatzie_10 Start: 5140, Stop: 6363, Start Num: 21

Candidate Starts for Schatzie_10:

(Start: 21 @5140 has 66 MA's), (64, 5266), (99, 5437), (101, 5443), (125, 5521), (156, 5626), (163, 5659), (164, 5662), (166, 5668), (173, 5710), (176, 5731), (200, 5860), (201, 5863), (215, 5956), (218, 5980), (242, 6091), (268, 6238), (276, 6277), (278, 6286), (280, 6301),

Gene: Schmidt_6 Start: 3556, Stop: 4848, Start Num: 21

Candidate Starts for Schmidt_6:

(Start: 21 @3556 has 66 MA's), (29, 3574), (40, 3619), (55, 3652), (67, 3706), (79, 3787), (88, 3811), (97, 3853), (101, 3865), (108, 3904), (109, 3907), (112, 3922), (122, 3949), (143, 4009), (144, 4012), (151, 4042), (153, 4048), (155, 4063), (198, 4315), (200, 4321), (203, 4336), (211, 4381), (217, 4429), (218, 4441), (220, 4450), (222, 4477), (235, 4531), (251, 4594), (257, 4648), (258, 4651), (262, 4678), (264, 4693), (267, 4705), (268, 4711), (274, 4744), (279, 4762), (283, 4792),

Gene: Schnauzer_4 Start: 2249, Stop: 3538, Start Num: 22

Candidate Starts for Schnauzer_4:

(Start: 22 @2249 has 51 MA's), (51, 2336), (58, 2342), (65, 2378), (68, 2390), (79, 2468), (100, 2543), (123, 2630), (175, 2825), (178, 2840), (186, 2882), (203, 2996), (218, 3101), (220, 3110), (225, 3155), (235, 3191), (243, 3221), (262, 3344), (276, 3416), (277, 3422),

Gene: Scitech_4 Start: 2249, Stop: 3538, Start Num: 22

Candidate Starts for Scitech_4:

(Start: 22 @2249 has 51 MA's), (51, 2336), (58, 2342), (65, 2378), (68, 2390), (79, 2468), (100, 2543), (123, 2630), (155, 2726), (175, 2825), (178, 2840), (186, 2882), (203, 2996), (218, 3101), (220, 3110), (225, 3155), (235, 3191), (243, 3221), (262, 3344), (276, 3416), (277, 3422),

Gene: Scrunchy_4 Start: 2671, Stop: 3798, Start Num: 30

Candidate Starts for Scrunchy_4:

(Start: 30 @2671 has 109 MA's), (52, 2740), (Start: 63 @2782 has 13 MA's), (68, 2806), (80, 2881), (101, 2953), (102, 2956), (103, 2962), (109, 2995), (125, 3031), (155, 3124), (156, 3127), (168, 3178), (179, 3256), (182, 3268), (191, 3310), (200, 3361), (213, 3442), (219, 3484), (233, 3565), (263, 3715),

Gene: SeaWolves_4 Start: 2659, Stop: 3786, Start Num: 30

Candidate Starts for SeaWolves_4:

(Start: 30 @2659 has 109 MA's), (52, 2728), (Start: 63 @2770 has 13 MA's), (68, 2794), (80, 2869), (101, 2941), (102, 2944), (103, 2950), (109, 2983), (125, 3019), (155, 3112), (156, 3115), (168, 3166), (179, 3244), (182, 3256), (191, 3298), (200, 3349), (213, 3430), (219, 3472), (233, 3553), (263, 3703),

Gene: Sebastisaurus_3 Start: 2190, Stop: 3551, Start Num: 21

Candidate Starts for Sebastisaurus_3:

(Start: 21 @2190 has 66 MA's), (45, 2265), (49, 2283), (Start: 62 @2319 has 2 MA's), (66, 2343), (95, 2487), (115, 2580), (119, 2592), (127, 2613), (132, 2622), (135, 2628), (136, 2631), (158, 2739), (159, 2742), (185, 2874), (188, 2886), (190, 2901), (207, 2997), (208, 3003), (211, 3027), (229, 3156), (251, 3243), (256, 3291), (257, 3297), (260, 3312), (270, 3381), (276, 3405),

Gene: Shambre1_5 Start: 3925, Stop: 5259, Start Num: 9

Candidate Starts for Shambre1_5:

(Start: 9 @3925 has 1 MA's), (50, 4069), (57, 4084), (73, 4165), (105, 4306), (106, 4324), (107, 4327), (120, 4372), (142, 4438), (168, 4540), (177, 4600), (203, 4747), (209, 4771), (214, 4825), (222, 4888), (225, 4906), (245, 4981), (255, 5041), (260, 5074), (267, 5116), (269, 5131), (272, 5149), (276, 5161), (277, 5167),

Gene: Shawty_3 Start: 2202, Stop: 3572, Start Num: 21

Candidate Starts for Shawty_3:

(Start: 21 @2202 has 66 MA's), (33, 2241), (Start: 62 @2337 has 2 MA's), (66, 2361), (69, 2370), (71, 2382), (95, 2505), (101, 2535), (108, 2574), (132, 2640), (135, 2646), (136, 2649), (142, 2670), (152, 2715), (158, 2757), (159, 2760), (168, 2793), (179, 2871), (182, 2883), (183, 2886), (188, 2904), (207, 3015), (208, 3021), (217, 3093), (229, 3174), (251, 3261), (256, 3309), (264, 3360), (268, 3378), (276, 3423),

Gene: ShrimpFriedEgg_4 Start: 2263, Stop: 3552, Start Num: 22

Candidate Starts for ShrimpFriedEgg_4:

(Start: 22 @2263 has 51 MA's), (34, 2299), (51, 2350), (58, 2356), (65, 2392), (68, 2404), (79, 2482), (100, 2557), (118, 2629), (122, 2638), (123, 2644), (126, 2650), (128, 2653), (155, 2740), (175, 2839), (178, 2854), (180, 2872), (203, 3010), (210, 3046), (218, 3115), (220, 3124), (225, 3169), (235, 3205), (243, 3235), (258, 3331), (262, 3358), (276, 3430),

Gene: Shweta_4 Start: 2263, Stop: 3552, Start Num: 22

Candidate Starts for Shweta_4:

(Start: 22 @2263 has 51 MA's), (34, 2299), (51, 2350), (58, 2356), (65, 2392), (68, 2404), (79, 2482), (100, 2557), (118, 2629), (122, 2638), (123, 2644), (126, 2650), (128, 2653), (155, 2740), (175, 2839), (178, 2854), (180, 2872), (203, 3010), (210, 3046), (218, 3115), (220, 3124), (225, 3169), (235, 3205), (243, 3235), (258, 3331), (262, 3358), (276, 3430),

Gene: Silvafighter_4 Start: 2249, Stop: 3538, Start Num: 22

Candidate Starts for Silvafighter_4:

(Start: 22 @2249 has 51 MA's), (51, 2336), (58, 2342), (65, 2378), (68, 2390), (79, 2468), (100, 2543), (123, 2630), (155, 2726), (175, 2825), (178, 2840), (186, 2882), (203, 2996), (218, 3101), (220, 3110), (225, 3155), (235, 3191), (243, 3221), (262, 3344), (276, 3416), (277, 3422),

Gene: Silvy_4 Start: 2249, Stop: 3538, Start Num: 22

Candidate Starts for Silvy_4:

(Start: 22 @2249 has 51 MA's), (51, 2336), (58, 2342), (65, 2378), (68, 2390), (79, 2468), (100, 2543), (123, 2630), (175, 2825), (178, 2840), (186, 2882), (203, 2996), (218, 3101), (220, 3110), (225, 3155), (235, 3191), (243, 3221), (262, 3344), (276, 3416), (277, 3422),

Gene: Sippinontea_4 Start: 2656, Stop: 3783, Start Num: 30

Candidate Starts for Sippinontea_4:

(Start: 20 @2629 has 1 MA's), (Start: 30 @2656 has 109 MA's), (52, 2725), (Start: 62 @2761 has 2 MA's), (Start: 63 @2767 has 13 MA's), (68, 2791), (80, 2866), (101, 2938), (102, 2941), (103, 2947), (109, 2980), (125, 3016), (146, 3064), (155, 3109), (156, 3112), (168, 3163), (179, 3241), (182, 3253), (191, 3295), (200, 3346), (213, 3427), (219, 3469), (233, 3550), (263, 3700),

Gene: SkinnyPete_4 Start: 2263, Stop: 3552, Start Num: 22

Candidate Starts for SkinnyPete_4:

(Start: 22 @2263 has 51 MA's), (34, 2299), (51, 2350), (58, 2356), (65, 2392), (68, 2404), (79, 2482), (100, 2557), (118, 2629), (122, 2638), (123, 2644), (126, 2650), (128, 2653), (155, 2740), (175, 2839), (178, 2854), (180, 2872), (203, 3010), (210, 3046), (218, 3115), (220, 3124), (225, 3169), (235, 3205), (243, 3235), (258, 3331), (262, 3358), (276, 3430),

Gene: Slentz_4 Start: 2671, Stop: 3798, Start Num: 30

Candidate Starts for Slentz_4:

(Start: 30 @2671 has 109 MA's), (52, 2740), (Start: 63 @2782 has 13 MA's), (68, 2806), (80, 2881), (101, 2953), (102, 2956), (103, 2962), (109, 2995), (125, 3031), (155, 3124), (156, 3127), (168, 3178), (179, 3256), (182, 3268), (191, 3310), (200, 3361), (213, 3442), (219, 3484), (233, 3565), (263, 3715),

Gene: Slizam_4 Start: 2698, Stop: 3825, Start Num: 30

Candidate Starts for Slizam_4:

(Start: 30 @2698 has 109 MA's), (52, 2767), (Start: 62 @2803 has 2 MA's), (Start: 63 @2809 has 13 MA's), (68, 2833), (80, 2908), (101, 2980), (102, 2983), (103, 2989), (109, 3022), (125, 3058), (155, 3151), (156, 3154), (168, 3205), (179, 3283), (182, 3295), (191, 3337), (200, 3388), (213, 3469), (219, 3511), (227, 3577), (233, 3592), (263, 3742),

Gene: Smurph_4 Start: 2249, Stop: 3538, Start Num: 22

Candidate Starts for Smurph_4:

(Start: 22 @2249 has 51 MA's), (51, 2336), (58, 2342), (65, 2378), (68, 2390), (79, 2468), (100, 2543), (123, 2630), (175, 2825), (178, 2840), (186, 2882), (203, 2996), (218, 3101), (220, 3110), (225, 3155), (235, 3191), (243, 3221), (262, 3344), (276, 3416), (277, 3422),

Gene: Snekmaggedon_4 Start: 2263, Stop: 3552, Start Num: 22

Candidate Starts for Snekmaggedon_4:

(Start: 22 @2263 has 51 MA's), (34, 2299), (51, 2350), (58, 2356), (65, 2392), (68, 2404), (79, 2482), (100, 2557), (118, 2629), (122, 2638), (123, 2644), (126, 2650), (128, 2653), (155, 2740), (175, 2839), (178, 2854), (180, 2872), (203, 3010), (210, 3046), (218, 3115), (220, 3124), (225, 3169), (235, 3205), (243, 3235), (258, 3331), (262, 3358), (276, 3430),

Gene: Snuffles_5 Start: 2868, Stop: 3995, Start Num: 30

Candidate Starts for Snuffles_5:

(Start: 20 @2841 has 1 MA's), (Start: 30 @2868 has 109 MA's), (52, 2937), (Start: 62 @2973 has 2 MA's), (Start: 63 @2979 has 13 MA's), (68, 3003), (80, 3078), (101, 3150), (102, 3153), (103, 3159), (109, 3192), (125, 3228), (155, 3321), (156, 3324), (168, 3375), (179, 3453), (182, 3465), (191, 3507), (200, 3558), (213, 3639), (219, 3681), (227, 3747), (233, 3762), (263, 3912),

Gene: Splinter_8 Start: 5071, Stop: 6363, Start Num: 19

Candidate Starts for Splinter_8:

(4, 4993), (Start: 19 @5071 has 8 MA's), (Start: 21 @5080 has 66 MA's), (56, 5176), (68, 5230), (101, 5386), (107, 5422), (118, 5461), (128, 5485), (144, 5533), (145, 5536), (153, 5566), (155, 5581), (156, 5584), (167, 5626), (193, 5782), (198, 5833), (203, 5854), (218, 5959), (221, 5971), (222, 5995), (235, 6049), (243, 6079), (244, 6085), (262, 6196), (279, 6280),

Gene: SpongeBob_4 Start: 2263, Stop: 3552, Start Num: 22

Candidate Starts for SpongeBob_4:

(Start: 22 @2263 has 51 MA's), (34, 2299), (51, 2350), (58, 2356), (65, 2392), (68, 2404), (79, 2482), (100, 2557), (118, 2629), (122, 2638), (123, 2644), (126, 2650), (128, 2653), (155, 2740), (175, 2839), (178, 2854), (180, 2872), (203, 3010), (210, 3046), (218, 3115), (220, 3124), (225, 3169), (235, 3205), (243, 3235), (258, 3331), (262, 3358), (276, 3430),

Gene: Squint_12 Start: 5184, Stop: 6413, Start Num: 21

Candidate Starts for Squint_12:

(Start: 21 @5184 has 66 MA's), (59, 5277), (64, 5310), (99, 5481), (100, 5484), (101, 5487), (125, 5565), (156, 5676), (160, 5697), (164, 5712), (166, 5718), (187, 5832), (190, 5853), (200, 5910), (201, 5913), (215, 6006), (218, 6030), (227, 6096), (255, 6207), (259, 6234), (274, 6318), (276, 6327), (280, 6351),

Gene: Stem_4 Start: 2698, Stop: 3825, Start Num: 30

Candidate Starts for Stem_4:

(Start: 30 @2698 has 109 MA's), (52, 2767), (Start: 62 @2803 has 2 MA's), (Start: 63 @2809 has 13 MA's), (68, 2833), (80, 2908), (101, 2980), (102, 2983), (103, 2989), (109, 3022), (125, 3058), (155, 3151), (156, 3154), (168, 3205), (179, 3283), (182, 3295), (191, 3337), (200, 3388), (213, 3469), (219, 3511), (227, 3577), (233, 3592), (263, 3742),

Gene: Superphikiman_12 Start: 5434, Stop: 6669, Start Num: 21

Candidate Starts for Superphikiman_12:

(Start: 21 @5434 has 66 MA's), (75, 5620), (90, 5689), (99, 5737), (101, 5743), (125, 5821), (156, 5929), (163, 5962), (164, 5965), (166, 5971), (187, 6085), (190, 6106), (200, 6163), (201, 6166), (215, 6259), (218, 6283), (224, 6334), (227, 6349), (233, 6364), (262, 6508), (276, 6580), (278, 6589),

Gene: TG1_3 Start: 2208, Stop: 3587, Start Num: 21

Candidate Starts for TG1_3:

(Start: 21 @2208 has 66 MA's), (66, 2364), (95, 2508), (101, 2538), (129, 2637), (132, 2643), (134, 2646), (142, 2679), (151, 2721), (155, 2748), (158, 2766), (159, 2769), (179, 2880), (182, 2892), (185, 2901), (188, 2913), (208, 3030), (229, 3183), (251, 3270), (264, 3369), (268, 3387), (270, 3408), (276, 3432),

Gene: TZGordon_10 Start: 5216, Stop: 6508, Start Num: 19

Candidate Starts for TZGordon_10:

(4, 5138), (Start: 19 @5216 has 8 MA's), (Start: 21 @5225 has 66 MA's), (56, 5321), (68, 5375), (101, 5531), (107, 5567), (118, 5606), (128, 5630), (144, 5678), (145, 5681), (153, 5711), (155, 5726), (156, 5729), (167, 5771), (193, 5927), (203, 5999), (218, 6104), (221, 6116), (222, 6140), (235, 6194), (243, 6224), (244, 6230), (262, 6341),

Gene: Tapioca_4 Start: 2249, Stop: 3538, Start Num: 22

Candidate Starts for Tapioca_4:

(Start: 22 @2249 has 51 MA's), (51, 2336), (58, 2342), (65, 2378), (68, 2390), (79, 2468), (100, 2543), (123, 2630), (175, 2825), (178, 2840), (186, 2882), (203, 2996), (218, 3101), (220, 3110), (225, 3155), (235, 3191), (243, 3221), (262, 3344), (276, 3416), (277, 3422),

Gene: Tarzan_4 Start: 2353, Stop: 3654, Start Num: 22

Candidate Starts for Tarzan_4:

(Start: 22 @2353 has 51 MA's), (Start: 23 @2356 has 1 MA's), (31, 2380), (38, 2410), (65, 2482), (88, 2599), (120, 2731), (126, 2749), (169, 2905), (180, 2977), (203, 3118), (206, 3127), (208, 3139), (210, 3154), (217, 3211), (218, 3223), (225, 3277), (226, 3280), (228, 3295), (235, 3313), (240, 3334), (262, 3460),

Gene: TeddyBoy_4 Start: 2671, Stop: 3798, Start Num: 30

Candidate Starts for TeddyBoy_4:

(Start: 30 @2671 has 109 MA's), (52, 2740), (Start: 63 @2782 has 13 MA's), (68, 2806), (80, 2881), (101, 2953), (102, 2956), (103, 2962), (109, 2995), (125, 3031), (155, 3124), (156, 3127), (168, 3178), (179, 3256), (182, 3268), (191, 3310), (200, 3361), (213, 3442), (219, 3484), (233, 3565), (263, 3715),

Gene: Thibault_8 Start: 5396, Stop: 6619, Start Num: 21

Candidate Starts for Thibault_8:

(Start: 21 @5396 has 66 MA's), (64, 5522), (99, 5693), (101, 5699), (125, 5777), (156, 5882), (163, 5915), (164, 5918), (166, 5924), (173, 5966), (176, 5987), (200, 6116), (201, 6119), (215, 6212), (218, 6236), (242, 6347), (268, 6494), (276, 6533), (278, 6542), (280, 6557),

Gene: ThreeRngTarjay_11 Start: 5886, Stop: 7109, Start Num: 21

Candidate Starts for ThreeRngTarjay_11:

(Start: 21 @5886 has 66 MA's), (64, 6012), (99, 6183), (101, 6189), (125, 6267), (156, 6372), (163, 6405), (164, 6408), (166, 6414), (173, 6456), (176, 6477), (200, 6606), (201, 6609), (215, 6702), (218, 6726), (242, 6837), (268, 6984), (276, 7023), (278, 7032), (280, 7047),

Gene: TimoTea_4 Start: 2647, Stop: 3774, Start Num: 30

Candidate Starts for TimoTea_4:

(Start: 30 @2647 has 109 MA's), (52, 2716), (Start: 63 @2758 has 13 MA's), (68, 2782), (80, 2857), (101, 2929), (102, 2932), (103, 2938), (109, 2971), (125, 3007), (155, 3100), (156, 3103), (168, 3154), (179, 3232), (182, 3244), (191, 3286), (200, 3337), (210, 3388), (213, 3418), (219, 3460), (233, 3541), (263, 3691),

Gene: TinaLin_11 Start: 5838, Stop: 7127, Start Num: 19

Candidate Starts for TinaLin_11:

(1, 5550), (Start: 19 @5838 has 8 MA's), (Start: 21 @5847 has 66 MA's), (68, 5997), (96, 6138), (106, 6186), (107, 6189), (133, 6261), (145, 6303), (152, 6330), (153, 6333), (155, 6348), (167, 6393), (180, 6483), (193, 6549), (203, 6621), (214, 6696), (218, 6726), (222, 6762), (235, 6816), (251, 6879), (262, 6963), (283, 7077),

Gene: TinyTruffula_4 Start: 2764, Stop: 3891, Start Num: 30

Candidate Starts for TinyTruffula_4:

(Start: 30 @2764 has 109 MA's), (52, 2833), (Start: 62 @2869 has 2 MA's), (Start: 63 @2875 has 13 MA's), (68, 2899), (80, 2974), (101, 3046), (102, 3049), (103, 3055), (109, 3088), (125, 3124), (155, 3217), (156, 3220), (168, 3271), (179, 3349), (182, 3361), (191, 3403), (200, 3454), (213, 3535), (219, 3577), (227, 3643), (233, 3658), (263, 3808),

Gene: TomBrady12_4 Start: 2698, Stop: 3825, Start Num: 30

Candidate Starts for TomBrady12_4:

(Start: 30 @2698 has 109 MA's), (52, 2767), (Start: 62 @2803 has 2 MA's), (Start: 63 @2809 has 13 MA's), (68, 2833), (80, 2908), (101, 2980), (102, 2983), (103, 2989), (109, 3022), (125, 3058), (155, 3151), (156, 3154), (168, 3205), (179, 3283), (182, 3295), (191, 3337), (200, 3388), (213, 3469), (219, 3511), (227, 3577), (233, 3592), (263, 3742),

Gene: Trine_3 Start: 2126, Stop: 3523, Start Num: 21

Candidate Starts for Trine_3:

(Start: 21 @2126 has 66 MA's), (26, 2135), (39, 2177), (44, 2192), (54, 2213), (65, 2261), (72, 2294), (94, 2405), (106, 2462), (108, 2468), (115, 2498), (116, 2501), (133, 2540), (161, 2654), (174, 2723), (177, 2741), (203, 2903), (211, 2948), (214, 2978), (218, 3008), (225, 3062), (235, 3098), (245, 3137), (248, 3149), (250, 3164), (251, 3167), (253, 3179), (257, 3221), (262, 3251), (268, 3284), (269, 3293),

Gene: Trireme_4 Start: 2764, Stop: 3891, Start Num: 30

Candidate Starts for Trireme_4:

(Start: 30 @2764 has 109 MA's), (52, 2833), (Start: 62 @2869 has 2 MA's), (Start: 63 @2875 has 13 MA's), (68, 2899), (80, 2974), (101, 3046), (102, 3049), (103, 3055), (109, 3088), (125, 3124), (155, 3217), (156, 3220), (168, 3271), (179, 3349), (182, 3361), (191, 3403), (200, 3454), (213, 3535), (219, 3577), (227, 3643), (233, 3658), (263, 3808),

Gene: Typha_11 Start: 6484, Stop: 7815, Start Num: 21

Candidate Starts for Typha_11:

(Start: 21 @6484 has 66 MA's), (24, 6490), (26, 6493), (43, 6541), (60, 6598), (64, 6619), (71, 6646), (88, 6739), (99, 6790), (100, 6793), (101, 6796), (125, 6895), (135, 6913), (138, 6922), (140, 6928), (146, 6949), (156, 7009), (166, 7051), (182, 7150), (190, 7186), (192, 7195), (193, 7198), (200, 7243), (201, 7246), (215, 7339), (218, 7363), (236, 7453), (241, 7471), (242, 7474), (261, 7585), (268, 7621), (274, 7654), (276, 7663), (281, 7699),

Gene: Upsilon_4 Start: 2689, Stop: 3858, Start Num: 30

Candidate Starts for Upsilon_4:

(Start: 30 @2689 has 109 MA's), (52, 2758), (Start: 62 @2794 has 2 MA's), (Start: 63 @2800 has 13 MA's), (68, 2824), (80, 2899), (101, 2971), (102, 2974), (103, 2980), (109, 3013), (125, 3049), (155, 3142), (156, 3145), (168, 3196), (179, 3274), (182, 3286), (191, 3328), (200, 3379), (213, 3460), (219, 3502), (227, 3568), (233, 3583), (262, 3727), (263, 3733),

Gene: Upyo_3 Start: 2133, Stop: 3530, Start Num: 21

Candidate Starts for Upyo_3:

(Start: 21 @2133 has 66 MA's), (26, 2142), (38, 2187), (54, 2226), (106, 2475), (110, 2487), (111, 2490), (113, 2505), (128, 2544), (140, 2577), (143, 2589), (151, 2619), (161, 2667), (167, 2685), (203,

2916), (207, 2931), (211, 2961), (214, 2991), (218, 3021), (225, 3075), (241, 3135), (248, 3162), (253, 3192), (256, 3228), (257, 3234), (261, 3261), (262, 3264), (289, 3510),

Gene: Vanisius_4 Start: 2671, Stop: 3798, Start Num: 30

Candidate Starts for Vanisius_4:

(Start: 30 @2671 has 109 MA's), (52, 2740), (Start: 62 @2776 has 2 MA's), (Start: 63 @2782 has 13 MA's), (68, 2806), (80, 2881), (101, 2953), (102, 2956), (103, 2962), (109, 2995), (125, 3031), (155, 3124), (156, 3127), (168, 3178), (179, 3256), (182, 3268), (191, 3310), (200, 3361), (213, 3442), (219, 3484), (233, 3565), (263, 3715),

Gene: Vash_3 Start: 2206, Stop: 3567, Start Num: 21

Candidate Starts for Vash_3:

(3, 2071), (12, 2170), (16, 2179), (Start: 21 @2206 has 66 MA's), (66, 2350), (71, 2371), (95, 2494), (119, 2599), (132, 2629), (135, 2635), (152, 2704), (158, 2746), (159, 2749), (179, 2860), (182, 2872), (183, 2875), (188, 2893), (190, 2908), (208, 3010), (213, 3055), (217, 3082), (229, 3163), (251, 3250), (256, 3298), (264, 3349), (268, 3367), (270, 3388), (275, 3406),

Gene: Vendetta_8 Start: 5071, Stop: 6363, Start Num: 19

Candidate Starts for Vendetta_8:

(4, 4993), (Start: 19 @5071 has 8 MA's), (Start: 21 @5080 has 66 MA's), (56, 5176), (68, 5230), (101, 5386), (107, 5422), (118, 5461), (128, 5485), (144, 5533), (145, 5536), (153, 5566), (155, 5581), (156, 5584), (167, 5626), (193, 5782), (198, 5833), (203, 5854), (218, 5959), (221, 5971), (222, 5995), (235, 6049), (243, 6079), (244, 6085), (262, 6196), (279, 6280),

Gene: VitulaEligans_4 Start: 2740, Stop: 3867, Start Num: 30

Candidate Starts for VitulaEligans_4:

(Start: 23 @2725 has 1 MA's), (Start: 30 @2740 has 109 MA's), (52, 2809), (Start: 63 @2851 has 13 MA's), (68, 2875), (80, 2950), (101, 3022), (102, 3025), (103, 3031), (109, 3064), (155, 3193), (156, 3196), (168, 3247), (179, 3325), (182, 3337), (191, 3379), (200, 3430), (210, 3481), (213, 3511), (219, 3553), (233, 3634), (263, 3784),

Gene: Wanda_12 Start: 5407, Stop: 6630, Start Num: 21

Candidate Starts for Wanda_12:

(Start: 21 @5407 has 66 MA's), (64, 5533), (99, 5704), (101, 5710), (125, 5788), (156, 5893), (163, 5926), (164, 5929), (166, 5935), (173, 5977), (176, 5998), (200, 6127), (201, 6130), (215, 6223), (218, 6247), (242, 6358), (268, 6505), (276, 6544), (278, 6553), (280, 6568),

Gene: Widow_3 Start: 2078, Stop: 3436, Start Num: 21

Candidate Starts for Widow_3:

(Start: 21 @2078 has 66 MA's), (26, 2087), (38, 2135), (70, 2243), (89, 2339), (106, 2423), (116, 2462), (152, 2570), (155, 2588), (161, 2615), (168, 2642), (174, 2684), (186, 2747), (203, 2864), (214, 2939), (218, 2969), (225, 3023), (239, 3077), (245, 3098), (262, 3212), (267, 3239),

Gene: Witch_4 Start: 2660, Stop: 3787, Start Num: 30

Candidate Starts for Witch_4:

(Start: 30 @2660 has 109 MA's), (52, 2729), (Start: 63 @2771 has 13 MA's), (68, 2795), (80, 2870), (101, 2942), (102, 2945), (103, 2951), (109, 2984), (125, 3020), (155, 3113), (156, 3116), (168, 3167), (179, 3245), (182, 3257), (191, 3299), (200, 3350), (213, 3431), (219, 3473), (233, 3554), (263, 3704),

Gene: Wolfpack_4 Start: 2656, Stop: 3783, Start Num: 30

Candidate Starts for Wolfpack_4:

(Start: 20 @2629 has 1 MA's), (Start: 30 @2656 has 109 MA's), (52, 2725), (Start: 62 @2761 has 2 MA's), (Start: 63 @2767 has 13 MA's), (68, 2791), (80, 2866), (101, 2938), (102, 2941), (103, 2947),

(109, 2980), (125, 3016), (146, 3064), (155, 3109), (156, 3112), (168, 3163), (179, 3241), (182, 3253), (191, 3295), (200, 3346), (213, 3427), (219, 3469), (233, 3550), (263, 3700),

Gene: Xeno_4 Start: 2249, Stop: 3538, Start Num: 22

Candidate Starts for Xeno_4:

(Start: 22 @2249 has 51 MA's), (51, 2336), (58, 2342), (65, 2378), (68, 2390), (79, 2468), (100, 2543), (123, 2630), (155, 2726), (175, 2825), (178, 2840), (186, 2882), (203, 2996), (218, 3101), (220, 3110), (225, 3155), (235, 3191), (243, 3221), (262, 3344), (276, 3416), (277, 3422),

Gene: Xerxes_4 Start: 2249, Stop: 3538, Start Num: 22

Candidate Starts for Xerxes_4:

(Start: 22 @2249 has 51 MA's), (51, 2336), (58, 2342), (65, 2378), (68, 2390), (79, 2468), (100, 2543), (123, 2630), (175, 2825), (178, 2840), (186, 2882), (203, 2996), (218, 3101), (220, 3110), (225, 3155), (235, 3191), (243, 3221), (262, 3344), (276, 3416), (277, 3422),

Gene: Yami_4 Start: 2647, Stop: 3774, Start Num: 30

Candidate Starts for Yami_4:

(Start: 30 @2647 has 109 MA's), (52, 2716), (Start: 62 @2752 has 2 MA's), (Start: 63 @2758 has 13 MA's), (68, 2782), (80, 2857), (101, 2929), (102, 2932), (103, 2938), (109, 2971), (125, 3007), (155, 3100), (156, 3103), (168, 3154), (179, 3232), (182, 3244), (191, 3286), (200, 3337), (213, 3418), (219, 3460), (227, 3526), (233, 3541), (263, 3691),

Gene: Yasuo_4 Start: 2656, Stop: 3783, Start Num: 30

Candidate Starts for Yasuo_4:

(Start: 30 @2656 has 109 MA's), (52, 2725), (Start: 63 @2767 has 13 MA's), (68, 2791), (80, 2866), (101, 2938), (102, 2941), (103, 2947), (109, 2980), (125, 3016), (155, 3109), (156, 3112), (168, 3163), (179, 3241), (182, 3253), (191, 3295), (200, 3346), (213, 3427), (219, 3469), (233, 3550), (263, 3700),

Gene: Yeet_10 Start: 5140, Stop: 6363, Start Num: 21

Candidate Starts for Yeet_10:

(Start: 21 @5140 has 66 MA's), (64, 5266), (99, 5437), (101, 5443), (125, 5521), (156, 5626), (163, 5659), (164, 5662), (166, 5668), (173, 5710), (176, 5731), (200, 5860), (201, 5863), (215, 5956), (218, 5980), (242, 6091), (268, 6238), (276, 6277), (278, 6286), (280, 6301),

Gene: YertPhresh_4 Start: 2659, Stop: 3786, Start Num: 30

Candidate Starts for YertPhresh_4:

(Start: 30 @2659 has 109 MA's), (52, 2728), (Start: 63 @2770 has 13 MA's), (68, 2794), (80, 2869), (101, 2941), (102, 2944), (103, 2950), (109, 2983), (125, 3019), (155, 3112), (156, 3115), (168, 3166), (179, 3244), (182, 3256), (191, 3298), (200, 3349), (213, 3430), (219, 3472), (233, 3553), (263, 3703),

Gene: Yubaba_4 Start: 2660, Stop: 3787, Start Num: 30

Candidate Starts for Yubaba_4:

(Start: 30 @2660 has 109 MA's), (52, 2729), (Start: 63 @2771 has 13 MA's), (68, 2795), (80, 2870), (101, 2942), (102, 2945), (103, 2951), (109, 2984), (125, 3020), (155, 3113), (156, 3116), (168, 3167), (179, 3245), (182, 3257), (191, 3299), (200, 3350), (213, 3431), (219, 3473), (233, 3554), (263, 3704),

Gene: Zelink_12 Start: 5914, Stop: 7137, Start Num: 21

Candidate Starts for Zelink_12:

(Start: 21 @5914 has 66 MA's), (64, 6040), (99, 6211), (101, 6217), (125, 6295), (156, 6400), (163, 6433), (164, 6436), (166, 6442), (173, 6484), (176, 6505), (200, 6634), (201, 6637), (215, 6730), (218, 6754), (242, 6865), (268, 7012), (276, 7051), (278, 7060), (280, 7075),

Gene: phiBT1_34 Start: 2227, Stop: 3600, Start Num: 21

Candidate Starts for phiBT1_34:

(Start: 21 @2227 has 66 MA's), (66, 2380), (95, 2524), (108, 2593), (119, 2629), (132, 2659), (135, 2665), (142, 2689), (150, 2728), (151, 2731), (158, 2776), (159, 2779), (179, 2890), (182, 2902), (188, 2923), (190, 2938), (200, 3004), (207, 3034), (208, 3040), (229, 3193), (251, 3280), (256, 3328), (268, 3397), (270, 3418), (275, 3436), (276, 3442),