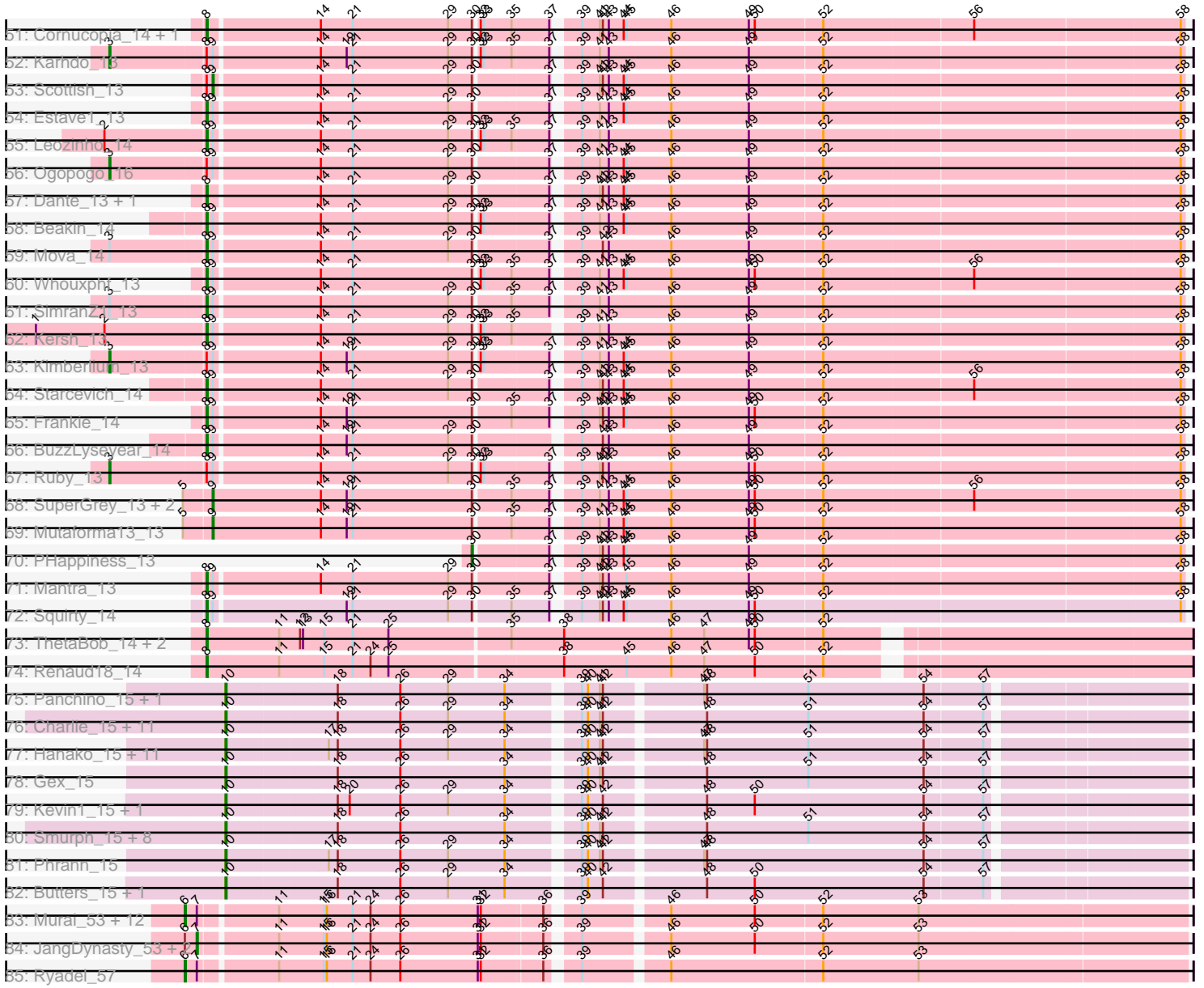


Pham 196249



Note: Tracks are now grouped by subcluster and scaled. Switching in subcluster is indicated by changes in track color. Track scale is now set by default to display the region 30 bp upstream of start 1 to 30 bp downstream of the last possible start. If this default region is judged to be packed too tightly with annotated starts, the track will be further scaled to only show that region of the ORF with annotated starts. This action will be indicated by adding "Zoomed" to the title. For starts, yellow indicates the location of called starts comprised solely of Glimmer/GeneMark auto-annotations, green indicates the location of called starts with at least 1 manual gene annotation.

Pham 196249 Report

This analysis was run 12/09/24 on database version 580.

Pham number 196249 has 272 members, 1 are drafts.

Phages represented in each track:

- Track 1 : Hlubikazi_13, Brocalys_13, JalFarm20_14, Clifton_13, Rockne_13, OwlsT2W_14, Eradicator_13, BlueCrab_13, Saal_13, Cerasum_14, Inventum_13, BodEinwohner17_13, Mandlovu_13, Deb65_13, Dorothy_13, Radiance_13, Nimbo_13, Nitzel_14, Pippy_12, Velveteen_14, Gandolph_13, Daenerys_13, Phatniss_13, Pollywog_14, VRedHorse_13, Blexus_13, Sarma624_14, Sassafras_13, Leperchaun_13, Strokeseat_13, BigPhil_14, Pacc40_13, JoeyJr_13, Kingsley_14, OldBen_13, Geralt_13, Gorge_13, Latretium_13, Koella_13
- Track 2 : DosHalletts_14, Totinger_14, Awesomesauce_14, LittleShirley_14, Piper2020_14
- Track 3 : Emma_13, Galactic_13, Batiatus_13, Job42_14, MilleniumForce_14, SiSi_13, DLane_12
- Track 4 : Bubbles123_13, Donkeykong_12, Cabrinians_13, James_13, FreddyB_13, BobaPhett_13, Yorick_13, Burwell21_13, Jarcob_13, Mattes_13, SwagPiggett_13, Lizziana_13, Maravista_13, Martik_13, Nivrat_13, Philus_13, ShowerHandel_13, Priscilla_13, Zizzle_13
- Track 5 : WillSterrel_13, Guppsters_13, IrishSherpFalk_13, Spartacus_13
- Track 6 : Stap_14, Tootsieroll_14, Ramsey_14, RockyHorror_14
- Track 7 : Modragons_13, Sebastian_13, OfUltron_13, Fancypants_13, Llama_13, Ochi17_13
- Track 8 : Krakatau_14, Bobi_14, Phanphagia_13, Shauna1_12
- Track 9 : GUmbie_12, DeadP_13, Royals2015_13, SG4_13, Tweety_12, KristaRAM_14, Ovechkin_13, Chuckly_13, Taj_13, Byougenkin_13, SassyB_13, CaptainTrips_14, Firehouse51_13, Whatsapiecost_13, Veteran_13, Fruitloop_13, Wee_12, Melissauren88_13, QuickMath_13, PopTart_13
- Track 10 : Wachhund_13
- Track 11 : Aubs_13
- Track 12 : LilMoolah_12
- Track 13 : MilanaBonita_14, DotProduct_13, Phalconet_13, Madiba_14, DillTech15_13, Hamulus_13, XFactor_13, Filuzino_13, ShroomBoi_13, Ardmore_12, EleanorGeorge_13, Phasih_13, Akhila_14, Bipolar_13
- Track 14 : Sabbb_13, Doomphist_13, Poenanya_13
- Track 15 : ArcusAngelus_13, Mozy_13, Chevrolet_13
- Track 16 : RitaG_13
- Track 17 : Flathead_14
- Track 18 : Quico_14, Girafales_14
- Track 19 : Moonbeam_13, Rialto_14
- Track 20 : Coco12_14

- Track 21 : MisterCuddles_13, Girr_13
- Track 22 : Juice456_14, Plumbus_14
- Track 23 : Zerg_13
- Track 24 : StAnnes_13
- Track 25 : ShiLan_13, ByChance_13
- Track 26 : GigiOuiOui_13
- Track 27 : UncleRicky_14, Enby_14, Lorde_14, Drago_14
- Track 28 : Eish_13, Spoonbill_13
- Track 29 : Doug_13
- Track 30 : Spikelee_14
- Track 31 : MinionDave_14
- Track 32 : PhesterPhotato_13
- Track 33 : Misha28_14, TootsiePop_14, DocMcStuffins_14
- Track 34 : Hegedechwinu_14, LunaBlu_13
- Track 35 : LastJedi_13
- Track 36 : Sparkdehlily_13, DRBy19_13, TDanisky_13, MadMen_13
- Track 37 : Fastidio_13
- Track 38 : Alexphander_14
- Track 39 : Hades_13
- Track 40 : Crumble_13, NormanBulbieJr_13
- Track 41 : Mahavrat_13, Juniper1_13
- Track 42 : Florinda_13
- Track 43 : Harley_13, Ibhubesi_12
- Track 44 : Sandalphon_13
- Track 45 : Polka14_13
- Track 46 : DirtMcgirt_14
- Track 47 : Seagreen_14
- Track 48 : OlympiaSaint_13
- Track 49 : DaWorst_14
- Track 50 : KingMidas_13
- Track 51 : Cornucopia_14, Marker_14
- Track 52 : Karhdo_13
- Track 53 : Scottish_13
- Track 54 : Estave1_13
- Track 55 : Leozinho_14
- Track 56 : Ogopogo_16
- Track 57 : Dante_13, Che8_13
- Track 58 : Beakin_14
- Track 59 : Mova_14
- Track 60 : Whouxphf_13
- Track 61 : SimranZ1_13
- Track 62 : Kersh_13
- Track 63 : Kimberlium_13
- Track 64 : Starcevich_14
- Track 65 : Frankie_14
- Track 66 : BuzzLyseyear_14
- Track 67 : Ruby_13
- Track 68 : SuperGrey_13, Rita_13, Kenuha5_13
- Track 69 : Mutaforma13_13
- Track 70 : PHappiness_13
- Track 71 : Mantra_13
- Track 72 : Squirty_14
- Track 73 : ThetaBob_14, TChen_14, LunaStella_14

- Track 74 : Renaud18_14
- Track 75 : Panchino_15, SkinnyPete_15
- Track 76 : Charlie_15, Andies_15, Aggie_15, Magsby_15, Chewbacca_15, Philonius_15, Silvy_15, Melville_15, Xeno_15, Fulbright_15, Journey_15, Tapioca_15
- Track 77 : Hanako_15, PhancyPhin_15, Raymond7_15, Snekmaggedon_15, BabeRuth_15, Shweta_15, ShrimpFriedEgg_15, Nенаe_15, Jamie19_15, Rebel_15, SpongeBob_15, Redi_15
- Track 78 : Gex_15
- Track 79 : Kevin1_15, MichelleMyBell_15
- Track 80 : Smurph_15, Parmesanjohn_15, Duplicity_15, Xerxes_15, Pipsqueaks_15, Carcharodon_15, Silvafighter_15, Schnauzer_15, Phloss_15
- Track 81 : Phrann_15
- Track 82 : Butters_15, Rubeelu_15
- Track 83 : Murai_53, Familton_54, Krili_52, Winget_54, NiebruSaylor_52, Shida_53, TelAviv_50, YungJamal_56, Catdawg_53, Zakhe101_53, Blessica_54, Vorrps_51, Mori_52
- Track 84 : JangDynasty_53, SchoolBus_53, Smooch_55
- Track 85 : Ryadel_57

Summary of Final Annotations (See graph section above for start numbers):

The start number called the most often in the published annotations is 8, it was called in 139 of the 271 non-draft genes in the pham.

Genes that call this "Most Annotated" start:

- Alexphander_14, Awesomesauce_14, Beakin_14, BigPhil_14, Blexus_13, BlueCrab_13, BobaPhett_13, BodEinwohner17_13, Brocalys_13, Bubbles123_13, Burwell21_13, BuzzLyseyear_14, Cabrinians_13, Cerasum_14, Che8_13, Clifton_13, Coco12_14, Cornucopia_14, Crumble_13, DRBy19_13, DaWorst_14, Daenerys_13, Dante_13, Deb65_13, DirtMcgirt_14, DocMcStuffins_14, Donkeykong_12, Doomphist_13, Dorothy_13, DosHalletts_14, Doug_13, Drago_14, Eish_13, Enby_14, Eradicator_13, Estave1_13, Fancypants_13, Fastidio_13, Florinda_13, Frankie_14, FreddyB_13, Gandalph_13, Geralt_13, GigiOuiOui_13, Girr_13, Gorge_13, Hades_13, Harley_13, Hlubikazi_13, Ihubesi_12, Inventum_13, JalFarm20_14, James_13, Jarcob_13, JoeyJr_13, Juice456_14, Juniper1_13, Kersh_13, KingMidas_13, Kingsley_14, Koella_13, LastJedi_13, Latretium_13, Leozinho_14, Leperchaun_13, LittleShirley_14, Lizziana_13, Llama_13, Lorde_14, LunaStella_14, MadMen_13, Mahavrat_13, Mandlovu_13, Mantra_13, Maravista_13, Marker_14, Martik_13, Mattes_13, Misha28_14, MisterCuddles_13, Modragons_13, Moonbeam_13, Mova_14, Nimbo_13, Nitzel_14, Nivrat_13, NormanBulbieJr_13, Ochi17_13, OfUltron_13, OldBen_13, OwlsT2W_14, Pacc40_13, Phatniss_13, Philus_13, Piper2020_14, Pippy_12, Plumbus_14, Poenanya_13, Polka14_13, Pollywog_14, Priscilla_13, Radiance_13, Ramsey_14, Renaud18_14, Rialto_14, RitaG_13, Rockne_13, RockyHorror_14, Saal_13, Sabbb_13, Sandalphon_13, Sarma624_14, Sassafras_13, Seabastian_13, Seagreen_14, ShowerHandel_13, SimranZ1_13, Sparkdehlily_13, Spikelee_14, Spoonbill_13, Squirty_14, Stap_14, Starcevich_14, Strokeseat_13, SwagPiggett_13, TChen_14, TDanisky_13, ThetaBob_14, TootsiePop_14, Tootsieroll_14, Totinger_14, UncleRicky_14, VRedHorse_13, Velveteen_14, Wachhund_13, Whouxphf_13, Yorick_13, Zerg_13, Zizzle_13,

Genes that have the "Most Annotated" start but do not call it:

- ByChance_13, Karhdo_13, Kimberlium_13, Ogotopogo_16, Ruby_13, Scottish_13, ShiLan_13,

Genes that do not have the "Most Annotated" start:

- Aggie_15, Akhila_14, Andies_15, ArcusAngelus_13, Ardmore_12, Aubs_13, BabeRuth_15, Batiatus_13, Bipolar_13, Blessica_54, Bobi_14, Butters_15, Byougenkin_13, CaptainTrips_14, Carcharodon_15, Catdawg_53, Charlie_15, Chevrolet_13, Chewbacca_15, Chuckly_13, DLane_12, DeadP_13, DillTech15_13, DotProduct_13, Duplicity_15, EleanorGeorge_13, Emma_13, Familton_54, Filuzino_13, Firehouse51_13, Flathead_14, Fruitloop_13, Fulbright_15, GUmbie_12, Galactic_13, Gex_15, Girafales_14, Guppsters_13, Hamulus_13, Hanako_15, Hegedechwinu_14, IrishSherpFalk_13, Jamie19_15, JangDynasty_53, Job42_14, Journey_15, Kenuha5_13, Kevin1_15, Krakatau_14, Krili_52, KristaRAM_14, LilMoolah_12, LunaBlu_13, Madiba_14, Magsby_15, Melissauren88_13, Melville_15, MichelleMyBell_15, MilanaBonita_14, MilleniumForce_14, MinionDave_14, Mori_52, Mozy_13, Murai_53, Mutaforma13_13, Nenae_15, NiebruSaylor_52, OlympiaSaint_13, Ovechkin_13, PHappiness_13, Panchino_15, Parmesanjohn_15, Phalconet_13, PhancyPhin_15, Phanphagia_13, Phasih_13, PhesterPhotato_13, Philonius_15, Phloss_15, Phrann_15, Pipsqueaks_15, PopTart_13, QuickMath_13, Quico_14, Raymond7_15, Rebel_15, Redi_15, Rita_13, Royals2015_13, Rubeelu_15, Ryadel_57, SG4_13, SassyB_13, Schnauzer_15, SchoolBus_53, Shauna1_12, Shida_53, ShrimpFriedEgg_15, ShroomBoi_13, Shweta_15, SiSi_13, Silvafighter_15, Silvy_15, SkinnyPete_15, Smooch_55, Smurph_15, Snekmaggon_15, Spartacus_13, SpongeBob_15, StAnnes_13, SuperGrey_13, Taj_13, Tapioca_15, TelAviv_50, Tweety_12, Veteran_13, Vorrps_51, Wee_12, Whatsapiecost_13, WillSterrel_13, Winget_54, XFactor_13, Xeno_15, Xerxes_15, YungJamal_56, Zakhe101_53,

Summary by start number:

Start 3:

- Found in 58 of 272 (21.3%) of genes in pham
- Manual Annotations of this start: 6 of 271
- Called 10.3% of time when present
- Phage (with cluster) where this start called: ByChance_13 (F1), Karhdo_13 (F1), Kimberlium_13 (F1), Ogotopogo_16 (F1), Ruby_13 (F1), ShiLan_13 (F1),

Start 6:

- Found in 17 of 272 (6.2%) of genes in pham
- Manual Annotations of this start: 14 of 271
- Called 82.4% of time when present
- Phage (with cluster) where this start called: Blessica_54 (O), Catdawg_53 (O), Familton_54 (O), Krili_52 (O), Mori_52 (O), Murai_53 (O), NiebruSaylor_52 (O), Ryadel_57 (O), Shida_53 (O), TelAviv_50 (O), Vorrps_51 (O), Winget_54 (O), YungJamal_56 (O), Zakhe101_53 (O),

Start 7:

- Found in 17 of 272 (6.2%) of genes in pham
- Manual Annotations of this start: 3 of 271
- Called 17.6% of time when present

- Phage (with cluster) where this start called: JangDynasty_53 (O), SchoolBus_53 (O), Smooch_55 (O),

Start 8:

- Found in 146 of 272 (53.7%) of genes in pham
- Manual Annotations of this start: 139 of 271
- Called 95.2% of time when present
- Phage (with cluster) where this start called: Alexphander_14 (F1), Awesomesauce_14 (F1), Beakin_14 (F1), BigPhil_14 (F1), Blexus_13 (F1), BlueCrab_13 (F1), BobaPhett_13 (F1), BodEinwohner17_13 (F1), Brocalys_13 (F1), Bubbles123_13 (F1), Burwell21_13 (F1), BuzzLyseyear_14 (F1), Cabrinians_13 (F1), Cerasum_14 (F1), Che8_13 (F1), Clifton_13 (F1), Coco12_14 (F1), Cornucopia_14 (F1), Crumble_13 (F1), DRBy19_13 (F1), DaWorst_14 (F1), Daenerys_13 (F1), Dante_13 (F1), Deb65_13 (F1), DirtMcgirt_14 (F1), DocMcStuffins_14 (F1), Donkeykong_12 (F1), Doomphist_13 (F1), Dorothy_13 (F1), DosHalletts_14 (F1), Doug_13 (F1), Drago_14 (F1), Eish_13 (F1), Enby_14 (F1), Eradicator_13 (F1), Estave1_13 (F1), Fancypants_13 (F1), Fastidio_13 (F1), Florida_13 (F1), Frankie_14 (F1), FreddyB_13 (F1), Gandolph_13 (F1), Geralt_13 (F1), GigiOuiOui_13 (F1), Girr_13 (F1), Gorge_13 (F1), Hades_13 (F1), Harley_13 (F1), Hlubikazi_13 (F1), Ibhubesi_12 (F1), Inventum_13 (F1), JalFarm20_14 (F1), James_13 (F1), Jarcob_13 (F1), JoeyJr_13 (F1), Juice456_14 (F1), Juniper1_13 (F1), Kersh_13 (F1), KingMidas_13 (F1), Kingsley_14 (F1), Koella_13 (F1), LastJedi_13 (F1), Latretium_13 (F1), Leozinho_14 (F1), Leperchaun_13 (F1), LittleShirley_14 (F1), Lizziana_13 (F1), Llama_13 (F1), Lorde_14 (F1), LunaStella_14 (F4), MadMen_13 (F1), Mahavrat_13 (F1), Mandlovu_13 (F1), Mantra_13 (F1), Maravista_13 (F1), Marker_14 (F1), Martik_13 (F1), Mattes_13 (F1), Misha28_14 (F1), MisterCuddles_13 (F1), Modragons_13 (F1), Moonbeam_13 (F1), Mova_14 (F1), Nimbo_13 (F1), Nitzel_14 (F1), Nivrat_13 (F1), NormanBulbieJr_13 (F1), Ochi17_13 (F1), OfUltron_13 (F1), OldBen_13 (F1), OwlsT2W_14 (F1), Pacc40_13 (F1), Phatniss_13 (F1), Philus_13 (F1), Piper2020_14 (F1), Pippy_12 (F1), Plumbus_14 (F1), Poenanya_13 (F1), Polka14_13 (F1), Pollywog_14 (F1), Priscilla_13 (F1), Radiance_13 (F1), Ramsey_14 (F1), Renaud18_14 (F4), Rialto_14 (F1), RitaG_13 (F1), Rockne_13 (F1), RockyHorror_14 (F1), Saal_13 (F1), Sabbb_13 (F1), Sandalphon_13 (F1), Sarma624_14 (F1), Sassafras_13 (F1), Seabastian_13 (F1), Seagreen_14 (F1), ShowerHandel_13 (F1), SimranZ1_13 (F1), Sparkdehliily_13 (F1), Spikelee_14 (F1), Spoonbill_13 (F1), Squirty_14 (F3), Stap_14 (F1), Starcevich_14 (F1), Strokeseat_13 (F1), SwagPigglett_13 (F1), TChen_14 (F4), TDanisky_13 (F1), ThetaBob_14 (F4), TootsiePop_14 (F1), Tootsieroll_14 (F1), Totinger_14 (F1), UncleRicky_14 (F1), VRedHorse_13 (F1), Velveteen_14 (F1), Wachhund_13 (F1), Whouxphf_13 (F1), Yorick_13 (F1), Zerg_13 (F1), Zizzle_13 (F1),

Start 9:

- Found in 204 of 272 (75.0%) of genes in pham
- Manual Annotations of this start: 66 of 271
- Called 32.8% of time when present
- Phage (with cluster) where this start called: Akhila_14 (F1), ArcusAngelus_13 (F1), Ardmore_12 (F1), Aubs_13 (F1), Batiatus_13 (F1), Bipolar_13 (F1), Bobi_14 (F1), Byougenkin_13 (F1), CaptainTrips_14 (F1), Chevrolet_13 (F1), Chuckly_13 (F1), DLane_12 (F1), DeadP_13 (F1), DillTech15_13 (F1), DotProduct_13 (F1), EleanorGeorge_13 (F1), Emma_13 (F1), Filuzino_13 (F1), Firehouse51_13 (F1), Flathead_14 (F1), Fruitloop_13 (F1), GUmbe_12 (F1), Galactic_13 (F1), Girafales_14 (F1), Guppsters_13 (F1), Hamulus_13 (F1), Hegedechwinu_14 (F1),

IrishSherpFalk_13 (F1), Job42_14 (F1), Kenuha5_13 (F1), Krakatau_14 (F1), KristaRAM_14 (F1), LunaBlu_13 (F1), Madiba_14 (F1), Melissauren88_13 (F1), MilanaBonita_14 (F1), MilleniumForce_14 (F1), MinionDave_14 (F1), Mozy_13 (F1), Mutaforma13_13 (F1), OlympiaSaint_13 (F1), Ovechkin_13 (F1), Phalconet_13 (F1), Phanphagia_13 (F1), Phasih_13 (F1), PhesterPhotato_13 (F1), PopTart_13 (F1), QuickMath_13 (F1), Quico_14 (F1), Rita_13 (F1), Royals2015_13 (F1), SG4_13 (F1), SassyB_13 (F1), Scottish_13 (F1), Shauna1_12 (F1), ShroomBoi_13 (F1), SiSi_13 (F1), Spartacus_13 (F1), StAnnes_13 (F1), SuperGrey_13 (F1), Taj_13 (F1), Tweety_12 (F1), Veteran_13 (F1), Wee_12 (F1), Whatsapiecost_13 (F1), WillSterrel_13 (F1), XFactor_13 (F1),

Start 10:

- Found in 41 of 272 (15.1%) of genes in pham
- Manual Annotations of this start: 41 of 271
- Called 100.0% of time when present
- Phage (with cluster) where this start called: Aggie_15 (N), Andies_15 (N), BabeRuth_15 (N), Butters_15 (N), Carcharodon_15 (N), Charlie_15 (N), Chewbacca_15 (N), Duplicity_15 (N), Fulbright_15 (N), Gex_15 (N), Hanako_15 (N), Jamie19_15 (N), Journey_15 (N), Kevin1_15 (N), Magsby_15 (N), Melville_15 (N), MichelleMyBell_15 (N), Nenae_15 (N), Panchino_15 (N), Parmesanjohn_15 (N), PhancyPhin_15 (N), Philonius_15 (N), Phloss_15 (N), Phrann_15 (N), Pipsqueaks_15 (N), Raymond7_15 (N), Rebel_15 (N), Redi_15 (N), Rubeelu_15 (N), Schnauzer_15 (N), ShrimpFriedEgg_15 (N), Shweta_15 (N), Silvafighter_15 (N), Silvy_15 (N), SkinnyPete_15 (N), Smurph_15 (N), Snekmaggedon_15 (N), SpongeBob_15 (N), Tapioca_15 (N), Xeno_15 (N), Xerxes_15 (N),

Start 22:

- Found in 1 of 272 (0.4%) of genes in pham
- Manual Annotations of this start: 1 of 271
- Called 100.0% of time when present
- Phage (with cluster) where this start called: LilMoolah_12 (F1),

Start 30:

- Found in 210 of 272 (77.2%) of genes in pham
- Manual Annotations of this start: 1 of 271
- Called 0.5% of time when present
- Phage (with cluster) where this start called: PHappiness_13 (F1),

Summary by clusters:

There are 5 clusters represented in this pham: F1, F3, F4, O, N,

Info for manual annotations of cluster F1:

- Start number 3 was manually annotated 6 times for cluster F1.
- Start number 8 was manually annotated 134 times for cluster F1.
- Start number 9 was manually annotated 66 times for cluster F1.
- Start number 22 was manually annotated 1 time for cluster F1.
- Start number 30 was manually annotated 1 time for cluster F1.

Info for manual annotations of cluster F3:

- Start number 8 was manually annotated 1 time for cluster F3.

Info for manual annotations of cluster F4:

- Start number 8 was manually annotated 4 times for cluster F4.

Info for manual annotations of cluster N:

- Start number 10 was manually annotated 41 times for cluster N.

Info for manual annotations of cluster O:

- Start number 6 was manually annotated 14 times for cluster O.
- Start number 7 was manually annotated 3 times for cluster O.

Gene Information:

Gene: Aggie_15 Start: 9037, Stop: 9943, Start Num: 10

Candidate Starts for Aggie_15:

(Start: 10 @9037 has 41 MA's), (18, 9145), (26, 9208), (29, 9256), (34, 9313), (39, 9376), (40, 9382), (41, 9394), (42, 9397), (48, 9487), (51, 9589), (54, 9703), (57, 9760),

Gene: Akhila_14 Start: 9227, Stop: 10163, Start Num: 9

Candidate Starts for Akhila_14:

(5, 9200), (Start: 9 @9227 has 66 MA's), (14, 9335), (21, 9365), (Start: 30 @9485 has 1 MA's), (35, 9518), (37, 9554), (39, 9572), (41, 9590), (43, 9599), (44, 9614), (45, 9617), (46, 9662), (49, 9740), (50, 9746), (52, 9812), (56, 9959), (58, 10160),

Gene: Alexphander_14 Start: 8386, Stop: 9322, Start Num: 8

Candidate Starts for Alexphander_14:

(Start: 8 @8386 has 139 MA's), (Start: 9 @8392 has 66 MA's), (14, 8494), (21, 8524), (29, 8620), (Start: 30 @8644 has 1 MA's), (32, 8647), (33, 8650), (37, 8713), (39, 8731), (41, 8749), (43, 8758), (46, 8821), (49, 8899), (52, 8971), (58, 9319),

Gene: Andies_15 Start: 9036, Stop: 9942, Start Num: 10

Candidate Starts for Andies_15:

(Start: 10 @9036 has 41 MA's), (18, 9144), (26, 9207), (29, 9255), (34, 9312), (39, 9375), (40, 9381), (41, 9393), (42, 9396), (48, 9486), (51, 9588), (54, 9702), (57, 9759),

Gene: ArcusAngelus_13 Start: 8567, Stop: 9503, Start Num: 9

Candidate Starts for ArcusAngelus_13:

(5, 8540), (Start: 9 @8567 has 66 MA's), (14, 8675), (21, 8705), (28, 8780), (Start: 30 @8825 has 1 MA's), (32, 8828), (33, 8831), (35, 8858), (37, 8894), (41, 8930), (42, 8933), (43, 8939), (44, 8954), (45, 8957), (46, 9002), (49, 9080), (50, 9086), (52, 9152), (58, 9500),

Gene: Ardmore_12 Start: 8577, Stop: 9513, Start Num: 9

Candidate Starts for Ardmore_12:

(5, 8550), (Start: 9 @8577 has 66 MA's), (14, 8685), (21, 8715), (Start: 30 @8835 has 1 MA's), (35, 8868), (37, 8904), (39, 8922), (41, 8940), (43, 8949), (44, 8964), (45, 8967), (46, 9012), (49, 9090), (50, 9096), (52, 9162), (56, 9309), (58, 9510),

Gene: Aubs_13 Start: 8576, Stop: 9512, Start Num: 9

Candidate Starts for Aubs_13:

(5, 8549), (Start: 9 @8576 has 66 MA's), (14, 8684), (21, 8714), (28, 8789), (Start: 30 @8834 has 1 MA's), (32, 8837), (33, 8840), (35, 8867), (37, 8903), (41, 8939), (42, 8942), (43, 8948), (46, 9011), (49, 9089), (52, 9161), (58, 9509),

Gene: Awesomesauce_14 Start: 8400, Stop: 9336, Start Num: 8

Candidate Starts for Awesomesauce_14:

(Start: 8 @8400 has 139 MA's), (Start: 9 @8406 has 66 MA's), (14, 8508), (21, 8538), (29, 8634), (Start: 30 @8658 has 1 MA's), (37, 8727), (39, 8745), (41, 8763), (42, 8766), (43, 8772), (44, 8787), (45, 8790), (46, 8835), (49, 8913), (52, 8985), (56, 9132), (58, 9333),

Gene: BabeRuth_15 Start: 9081, Stop: 9987, Start Num: 10

Candidate Starts for BabeRuth_15:

(Start: 10 @9081 has 41 MA's), (17, 9180), (18, 9189), (26, 9252), (29, 9300), (34, 9357), (39, 9420), (40, 9426), (41, 9438), (42, 9441), (47, 9528), (48, 9531), (51, 9633), (54, 9747), (57, 9804),

Gene: Batiatus_13 Start: 8576, Stop: 9512, Start Num: 9

Candidate Starts for Batiatus_13:

(5, 8549), (Start: 9 @8576 has 66 MA's), (14, 8684), (21, 8714), (Start: 30 @8834 has 1 MA's), (32, 8837), (33, 8840), (35, 8867), (37, 8903), (39, 8921), (41, 8939), (42, 8942), (43, 8948), (44, 8963), (45, 8966), (46, 9011), (49, 9089), (50, 9095), (52, 9161), (56, 9308), (58, 9509),

Gene: Beakin_14 Start: 8392, Stop: 9328, Start Num: 8

Candidate Starts for Beakin_14:

(Start: 8 @8392 has 139 MA's), (Start: 9 @8398 has 66 MA's), (14, 8500), (21, 8530), (29, 8626), (Start: 30 @8650 has 1 MA's), (32, 8653), (33, 8656), (37, 8719), (39, 8737), (41, 8755), (43, 8764), (44, 8779), (45, 8782), (46, 8827), (49, 8905), (52, 8977), (58, 9325),

Gene: BigPhil_14 Start: 8383, Stop: 9319, Start Num: 8

Candidate Starts for BigPhil_14:

(Start: 8 @8383 has 139 MA's), (Start: 9 @8389 has 66 MA's), (14, 8491), (21, 8521), (29, 8617), (Start: 30 @8641 has 1 MA's), (37, 8710), (39, 8728), (41, 8746), (42, 8749), (43, 8755), (44, 8770), (45, 8773), (46, 8818), (49, 8896), (52, 8968), (58, 9316),

Gene: Bipolar_13 Start: 8545, Stop: 9481, Start Num: 9

Candidate Starts for Bipolar_13:

(5, 8518), (Start: 9 @8545 has 66 MA's), (14, 8653), (21, 8683), (Start: 30 @8803 has 1 MA's), (35, 8836), (37, 8872), (39, 8890), (41, 8908), (43, 8917), (44, 8932), (45, 8935), (46, 8980), (49, 9058), (50, 9064), (52, 9130), (56, 9277), (58, 9478),

Gene: Blessica_54 Start: 26060, Stop: 27011, Start Num: 6

Candidate Starts for Blessica_54:

(Start: 6 @26060 has 14 MA's), (Start: 7 @26072 has 3 MA's), (11, 26144), (15, 26189), (16, 26192), (21, 26216), (24, 26234), (26, 26264), (31, 26342), (32, 26345), (36, 26402), (39, 26426), (46, 26501), (50, 26585), (52, 26651), (53, 26747),

Gene: Blexus_13 Start: 8548, Stop: 9484, Start Num: 8

Candidate Starts for Blexus_13:

(Start: 8 @8548 has 139 MA's), (Start: 9 @8554 has 66 MA's), (14, 8656), (21, 8686), (29, 8782), (Start: 30 @8806 has 1 MA's), (37, 8875), (39, 8893), (41, 8911), (42, 8914), (43, 8920), (44, 8935), (45, 8938), (46, 8983), (49, 9061), (52, 9133), (58, 9481),

Gene: BlueCrab_13 Start: 8532, Stop: 9468, Start Num: 8

Candidate Starts for BlueCrab_13:

(Start: 8 @8532 has 139 MA's), (Start: 9 @8538 has 66 MA's), (14, 8640), (21, 8670), (29, 8766), (Start: 30 @8790 has 1 MA's), (37, 8859), (39, 8877), (41, 8895), (42, 8898), (43, 8904), (44, 8919), (45, 8922), (46, 8967), (49, 9045), (52, 9117), (58, 9465),

Gene: BobaPhett_13 Start: 8529, Stop: 9465, Start Num: 8

Candidate Starts for BobaPhett_13:

(Start: 3 @8436 has 6 MA's), (Start: 8 @8529 has 139 MA's), (Start: 9 @8535 has 66 MA's), (14, 8637), (21, 8667), (29, 8763), (Start: 30 @8787 has 1 MA's), (32, 8790), (33, 8793), (37, 8856), (39, 8874), (41, 8892), (43, 8901), (46, 8964), (49, 9042), (52, 9114), (58, 9462),

Gene: Bobi_14 Start: 8406, Stop: 9342, Start Num: 9

Candidate Starts for Bobi_14:

(5, 8379), (Start: 9 @8406 has 66 MA's), (14, 8514), (21, 8544), (Start: 30 @8664 has 1 MA's), (32, 8667), (33, 8670), (35, 8697), (37, 8733), (39, 8751), (41, 8769), (43, 8778), (44, 8793), (45, 8796), (46, 8841), (49, 8919), (50, 8925), (52, 8991), (56, 9138), (58, 9339),

Gene: BodEinwohner17_13 Start: 8532, Stop: 9468, Start Num: 8

Candidate Starts for BodEinwohner17_13:

(Start: 8 @8532 has 139 MA's), (Start: 9 @8538 has 66 MA's), (14, 8640), (21, 8670), (29, 8766), (Start: 30 @8790 has 1 MA's), (37, 8859), (39, 8877), (41, 8895), (42, 8898), (43, 8904), (44, 8919), (45, 8922), (46, 8967), (49, 9045), (52, 9117), (58, 9465),

Gene: Brocalys_13 Start: 8521, Stop: 9457, Start Num: 8

Candidate Starts for Brocalys_13:

(Start: 8 @8521 has 139 MA's), (Start: 9 @8527 has 66 MA's), (14, 8629), (21, 8659), (29, 8755), (Start: 30 @8779 has 1 MA's), (37, 8848), (39, 8866), (41, 8884), (42, 8887), (43, 8893), (44, 8908), (45, 8911), (46, 8956), (49, 9034), (52, 9106), (58, 9454),

Gene: Bubbles123_13 Start: 8557, Stop: 9493, Start Num: 8

Candidate Starts for Bubbles123_13:

(Start: 3 @8464 has 6 MA's), (Start: 8 @8557 has 139 MA's), (Start: 9 @8563 has 66 MA's), (14, 8665), (21, 8695), (29, 8791), (Start: 30 @8815 has 1 MA's), (32, 8818), (33, 8821), (37, 8884), (39, 8902), (41, 8920), (43, 8929), (46, 8992), (49, 9070), (52, 9142), (58, 9490),

Gene: Burwell21_13 Start: 8536, Stop: 9472, Start Num: 8

Candidate Starts for Burwell21_13:

(Start: 3 @8443 has 6 MA's), (Start: 8 @8536 has 139 MA's), (Start: 9 @8542 has 66 MA's), (14, 8644), (21, 8674), (29, 8770), (Start: 30 @8794 has 1 MA's), (32, 8797), (33, 8800), (37, 8863), (39, 8881), (41, 8899), (43, 8908), (46, 8971), (49, 9049), (52, 9121), (58, 9469),

Gene: Butters_15 Start: 9056, Stop: 9962, Start Num: 10

Candidate Starts for Butters_15:

(Start: 10 @9056 has 41 MA's), (18, 9164), (26, 9227), (29, 9275), (34, 9332), (39, 9395), (40, 9401), (42, 9416), (48, 9506), (50, 9554), (54, 9722), (57, 9779),

Gene: BuzzLyseyear_14 Start: 8386, Stop: 9322, Start Num: 8

Candidate Starts for BuzzLyseyear_14:

(Start: 8 @8386 has 139 MA's), (Start: 9 @8392 has 66 MA's), (14, 8494), (19, 8518), (21, 8524), (29, 8620), (Start: 30 @8644 has 1 MA's), (39, 8731), (42, 8752), (43, 8758), (46, 8821), (49, 8899), (52, 8971), (58, 9319),

Gene: ByChance_13 Start: 8446, Stop: 9475, Start Num: 3

Candidate Starts for ByChance_13:

(Start: 3 @8446 has 6 MA's), (Start: 8 @8539 has 139 MA's), (Start: 9 @8545 has 66 MA's), (14, 8647), (21, 8677), (29, 8773), (Start: 30 @8797 has 1 MA's), (32, 8800), (33, 8803), (37, 8866), (39, 8884), (41, 8902), (43, 8911), (46, 8974), (49, 9052), (52, 9124), (58, 9472),

Gene: Byougenkin_13 Start: 8548, Stop: 9484, Start Num: 9

Candidate Starts for Byougenkin_13:

(5, 8521), (Start: 9 @8548 has 66 MA's), (14, 8656), (21, 8686), (Start: 30 @8806 has 1 MA's), (35, 8839), (37, 8875), (39, 8893), (41, 8911), (42, 8914), (43, 8920), (44, 8935), (45, 8938), (46, 8983), (49, 9061), (50, 9067), (52, 9133), (56, 9280), (58, 9481),

Gene: Cabrinians_13 Start: 8529, Stop: 9465, Start Num: 8

Candidate Starts for Cabrinians_13:

(Start: 3 @8436 has 6 MA's), (Start: 8 @8529 has 139 MA's), (Start: 9 @8535 has 66 MA's), (14, 8637), (21, 8667), (29, 8763), (Start: 30 @8787 has 1 MA's), (32, 8790), (33, 8793), (37, 8856), (39, 8874), (41, 8892), (43, 8901), (46, 8964), (49, 9042), (52, 9114), (58, 9462),

Gene: CaptainTrips_14 Start: 9225, Stop: 10161, Start Num: 9

Candidate Starts for CaptainTrips_14:

(5, 9198), (Start: 9 @9225 has 66 MA's), (14, 9333), (21, 9363), (Start: 30 @9483 has 1 MA's), (35, 9516), (37, 9552), (39, 9570), (41, 9588), (42, 9591), (43, 9597), (44, 9612), (45, 9615), (46, 9660), (49, 9738), (50, 9744), (52, 9810), (56, 9957), (58, 10158),

Gene: Carcharodon_15 Start: 9036, Stop: 9942, Start Num: 10

Candidate Starts for Carcharodon_15:

(Start: 10 @9036 has 41 MA's), (18, 9144), (26, 9207), (34, 9312), (39, 9375), (40, 9381), (41, 9393), (42, 9396), (48, 9486), (51, 9588), (54, 9702), (57, 9759),

Gene: Catdawg_53 Start: 25749, Stop: 26700, Start Num: 6

Candidate Starts for Catdawg_53:

(Start: 6 @25749 has 14 MA's), (Start: 7 @25761 has 3 MA's), (11, 25833), (15, 25878), (16, 25881), (21, 25905), (24, 25923), (26, 25953), (31, 26031), (32, 26034), (36, 26091), (39, 26115), (46, 26190), (50, 26274), (52, 26340), (53, 26436),

Gene: Cerasum_14 Start: 8383, Stop: 9319, Start Num: 8

Candidate Starts for Cerasum_14:

(Start: 8 @8383 has 139 MA's), (Start: 9 @8389 has 66 MA's), (14, 8491), (21, 8521), (29, 8617), (Start: 30 @8641 has 1 MA's), (37, 8710), (39, 8728), (41, 8746), (42, 8749), (43, 8755), (44, 8770), (45, 8773), (46, 8818), (49, 8896), (52, 8968), (58, 9316),

Gene: Charlie_15 Start: 9036, Stop: 9942, Start Num: 10

Candidate Starts for Charlie_15:

(Start: 10 @9036 has 41 MA's), (18, 9144), (26, 9207), (29, 9255), (34, 9312), (39, 9375), (40, 9381), (41, 9393), (42, 9396), (48, 9486), (51, 9588), (54, 9702), (57, 9759),

Gene: Che8_13 Start: 8536, Stop: 9472, Start Num: 8

Candidate Starts for Che8_13:

(Start: 8 @8536 has 139 MA's), (14, 8644), (21, 8674), (29, 8770), (Start: 30 @8794 has 1 MA's), (37, 8863), (39, 8881), (41, 8899), (42, 8902), (43, 8908), (44, 8923), (45, 8926), (46, 8971), (49, 9049), (52, 9121), (58, 9469),

Gene: Chevrolet_13 Start: 8567, Stop: 9503, Start Num: 9

Candidate Starts for Chevrolet_13:

(5, 8540), (Start: 9 @8567 has 66 MA's), (14, 8675), (21, 8705), (28, 8780), (Start: 30 @8825 has 1 MA's), (32, 8828), (33, 8831), (35, 8858), (37, 8894), (41, 8930), (42, 8933), (43, 8939), (44, 8954), (45, 8957), (46, 9002), (49, 9080), (50, 9086), (52, 9152), (58, 9500),

Gene: Chewbacca_15 Start: 9036, Stop: 9942, Start Num: 10

Candidate Starts for Chewbacca_15:

(Start: 10 @9036 has 41 MA's), (18, 9144), (26, 9207), (29, 9255), (34, 9312), (39, 9375), (40, 9381), (41, 9393), (42, 9396), (48, 9486), (51, 9588), (54, 9702), (57, 9759),

Gene: Chuckly_13 Start: 8578, Stop: 9514, Start Num: 9

Candidate Starts for Chuckly_13:

(5, 8551), (Start: 9 @8578 has 66 MA's), (14, 8686), (21, 8716), (Start: 30 @8836 has 1 MA's), (35, 8869), (37, 8905), (39, 8923), (41, 8941), (42, 8944), (43, 8950), (44, 8965), (45, 8968), (46, 9013), (49, 9091), (50, 9097), (52, 9163), (56, 9310), (58, 9511),

Gene: Clifton_13 Start: 8520, Stop: 9456, Start Num: 8

Candidate Starts for Clifton_13:

(Start: 8 @8520 has 139 MA's), (Start: 9 @8526 has 66 MA's), (14, 8628), (21, 8658), (29, 8754), (Start: 30 @8778 has 1 MA's), (37, 8847), (39, 8865), (41, 8883), (42, 8886), (43, 8892), (44, 8907), (45, 8910), (46, 8955), (49, 9033), (52, 9105), (58, 9453),

Gene: Coco12_14 Start: 8385, Stop: 9321, Start Num: 8

Candidate Starts for Coco12_14:

(Start: 8 @8385 has 139 MA's), (Start: 9 @8391 has 66 MA's), (14, 8493), (21, 8523), (29, 8619), (Start: 30 @8643 has 1 MA's), (37, 8712), (39, 8730), (41, 8748), (42, 8751), (43, 8757), (46, 8820), (49, 8898), (52, 8970), (55, 9096), (56, 9117), (58, 9318),

Gene: Cornucopia_14 Start: 8418, Stop: 9354, Start Num: 8

Candidate Starts for Cornucopia_14:

(Start: 8 @8418 has 139 MA's), (14, 8526), (21, 8556), (29, 8652), (Start: 30 @8676 has 1 MA's), (32, 8679), (33, 8682), (35, 8709), (37, 8745), (39, 8763), (41, 8781), (42, 8784), (43, 8790), (44, 8805), (45, 8808), (46, 8853), (49, 8931), (50, 8937), (52, 9003), (56, 9150), (58, 9351),

Gene: Crumble_13 Start: 8537, Stop: 9473, Start Num: 8

Candidate Starts for Crumble_13:

(1, 8372), (2, 8441), (Start: 8 @8537 has 139 MA's), (Start: 9 @8543 has 66 MA's), (14, 8645), (21, 8675), (29, 8771), (Start: 30 @8795 has 1 MA's), (39, 8882), (41, 8900), (43, 8909), (46, 8972), (49, 9050), (52, 9122), (58, 9470),

Gene: DLane_12 Start: 8576, Stop: 9512, Start Num: 9

Candidate Starts for DLane_12:

(5, 8549), (Start: 9 @8576 has 66 MA's), (14, 8684), (21, 8714), (Start: 30 @8834 has 1 MA's), (32, 8837), (33, 8840), (35, 8867), (37, 8903), (39, 8921), (41, 8939), (42, 8942), (43, 8948), (44, 8963), (45, 8966), (46, 9011), (49, 9089), (50, 9095), (52, 9161), (56, 9308), (58, 9509),

Gene: DRBy19_13 Start: 8561, Stop: 9497, Start Num: 8

Candidate Starts for DRBy19_13:

(Start: 8 @8561 has 139 MA's), (Start: 9 @8567 has 66 MA's), (14, 8669), (21, 8699), (Start: 30 @8819 has 1 MA's), (37, 8888), (39, 8906), (41, 8924), (43, 8933), (44, 8948), (45, 8951), (46, 8996), (49, 9074), (52, 9146), (58, 9494),

Gene: DaWorst_14 Start: 8391, Stop: 9327, Start Num: 8

Candidate Starts for DaWorst_14:

(Start: 3 @8298 has 6 MA's), (Start: 8 @8391 has 139 MA's), (Start: 9 @8397 has 66 MA's), (14, 8499), (19, 8523), (21, 8529), (29, 8625), (Start: 30 @8649 has 1 MA's), (32, 8652), (33, 8655), (37, 8718), (39, 8736), (41, 8754), (43, 8763), (46, 8826), (49, 8904), (52, 8976), (58, 9324),

Gene: Daenerys_13 Start: 8532, Stop: 9468, Start Num: 8

Candidate Starts for Daenerys_13:

(Start: 8 @8532 has 139 MA's), (Start: 9 @8538 has 66 MA's), (14, 8640), (21, 8670), (29, 8766), (Start: 30 @8790 has 1 MA's), (37, 8859), (39, 8877), (41, 8895), (42, 8898), (43, 8904), (44, 8919), (45, 8922), (46, 8967), (49, 9045), (52, 9117), (58, 9465),

Gene: Dante_13 Start: 8563, Stop: 9499, Start Num: 8

Candidate Starts for Dante_13:

(Start: 8 @8563 has 139 MA's), (14, 8671), (21, 8701), (29, 8797), (Start: 30 @8821 has 1 MA's), (37, 8890), (39, 8908), (41, 8926), (42, 8929), (43, 8935), (44, 8950), (45, 8953), (46, 8998), (49, 9076), (52, 9148), (58, 9496),

Gene: DeadP_13 Start: 8577, Stop: 9513, Start Num: 9

Candidate Starts for DeadP_13:

(5, 8550), (Start: 9 @8577 has 66 MA's), (14, 8685), (21, 8715), (Start: 30 @8835 has 1 MA's), (35, 8868), (37, 8904), (39, 8922), (41, 8940), (42, 8943), (43, 8949), (44, 8964), (45, 8967), (46, 9012), (49, 9090), (50, 9096), (52, 9162), (56, 9309), (58, 9510),

Gene: Deb65_13 Start: 8532, Stop: 9468, Start Num: 8

Candidate Starts for Deb65_13:

(Start: 8 @8532 has 139 MA's), (Start: 9 @8538 has 66 MA's), (14, 8640), (21, 8670), (29, 8766), (Start: 30 @8790 has 1 MA's), (37, 8859), (39, 8877), (41, 8895), (42, 8898), (43, 8904), (44, 8919), (45, 8922), (46, 8967), (49, 9045), (52, 9117), (58, 9465),

Gene: DillTech15_13 Start: 8576, Stop: 9512, Start Num: 9

Candidate Starts for DillTech15_13:

(5, 8549), (Start: 9 @8576 has 66 MA's), (14, 8684), (21, 8714), (Start: 30 @8834 has 1 MA's), (35, 8867), (37, 8903), (39, 8921), (41, 8939), (43, 8948), (44, 8963), (45, 8966), (46, 9011), (49, 9089), (50, 9095), (52, 9161), (56, 9308), (58, 9509),

Gene: DirtMcgirt_14 Start: 8392, Stop: 9328, Start Num: 8

Candidate Starts for DirtMcgirt_14:

(Start: 3 @8299 has 6 MA's), (Start: 8 @8392 has 139 MA's), (Start: 9 @8398 has 66 MA's), (14, 8500), (21, 8530), (29, 8626), (Start: 30 @8650 has 1 MA's), (37, 8719), (39, 8737), (41, 8755), (42, 8758), (43, 8764), (44, 8779), (45, 8782), (46, 8827), (49, 8905), (50, 8911), (52, 8977), (58, 9325),

Gene: DocMcStuffins_14 Start: 8399, Stop: 9335, Start Num: 8

Candidate Starts for DocMcStuffins_14:

(Start: 8 @8399 has 139 MA's), (Start: 9 @8405 has 66 MA's), (14, 8507), (19, 8531), (21, 8537), (Start: 30 @8657 has 1 MA's), (35, 8690), (37, 8726), (39, 8744), (41, 8762), (42, 8765), (43, 8771), (44, 8786), (45, 8789), (46, 8834), (49, 8912), (52, 8984), (56, 9131), (58, 9332),

Gene: Donkeykong_12 Start: 8555, Stop: 9491, Start Num: 8

Candidate Starts for Donkeykong_12:

(Start: 3 @8462 has 6 MA's), (Start: 8 @8555 has 139 MA's), (Start: 9 @8561 has 66 MA's), (14, 8663), (21, 8693), (29, 8789), (Start: 30 @8813 has 1 MA's), (32, 8816), (33, 8819), (37, 8882), (39, 8900), (41, 8918), (43, 8927), (46, 8990), (49, 9068), (52, 9140), (58, 9488),

Gene: Doomphist_13 Start: 8532, Stop: 9468, Start Num: 8

Candidate Starts for Doomphist_13:

(Start: 8 @8532 has 139 MA's), (Start: 9 @8538 has 66 MA's), (14, 8640), (19, 8664), (21, 8670), (29, 8766), (Start: 30 @8790 has 1 MA's), (35, 8823), (39, 8877), (41, 8895), (43, 8904), (46, 8967), (49, 9045), (52, 9117), (58, 9465),

Gene: Dorothy_13 Start: 8532, Stop: 9468, Start Num: 8

Candidate Starts for Dorothy_13:

(Start: 8 @8532 has 139 MA's), (Start: 9 @8538 has 66 MA's), (14, 8640), (21, 8670), (29, 8766), (Start: 30 @8790 has 1 MA's), (37, 8859), (39, 8877), (41, 8895), (42, 8898), (43, 8904), (44, 8919), (45, 8922), (46, 8967), (49, 9045), (52, 9117), (58, 9465),

Gene: DosHalletts_14 Start: 8385, Stop: 9321, Start Num: 8

Candidate Starts for DosHalletts_14:

(Start: 8 @8385 has 139 MA's), (Start: 9 @8391 has 66 MA's), (14, 8493), (21, 8523), (29, 8619), (Start: 30 @8643 has 1 MA's), (37, 8712), (39, 8730), (41, 8748), (42, 8751), (43, 8757), (44, 8772), (45, 8775), (46, 8820), (49, 8898), (52, 8970), (56, 9117), (58, 9318),

Gene: DotProduct_13 Start: 8578, Stop: 9514, Start Num: 9

Candidate Starts for DotProduct_13:

(5, 8551), (Start: 9 @8578 has 66 MA's), (14, 8686), (21, 8716), (Start: 30 @8836 has 1 MA's), (35, 8869), (37, 8905), (39, 8923), (41, 8941), (43, 8950), (44, 8965), (45, 8968), (46, 9013), (49, 9091), (50, 9097), (52, 9163), (56, 9310), (58, 9511),

Gene: Doug_13 Start: 8539, Stop: 9475, Start Num: 8

Candidate Starts for Doug_13:

(Start: 3 @8446 has 6 MA's), (Start: 8 @8539 has 139 MA's), (Start: 9 @8545 has 66 MA's), (14, 8647), (21, 8677), (29, 8773), (Start: 30 @8797 has 1 MA's), (32, 8800), (33, 8803), (35, 8830), (37, 8866), (39, 8884), (41, 8902), (43, 8911), (44, 8926), (45, 8929), (46, 8974), (49, 9052), (50, 9058), (52, 9124), (58, 9472),

Gene: Drago_14 Start: 8390, Stop: 9326, Start Num: 8

Candidate Starts for Drago_14:

(Start: 3 @8297 has 6 MA's), (Start: 8 @8390 has 139 MA's), (Start: 9 @8396 has 66 MA's), (14, 8498), (21, 8528), (Start: 30 @8648 has 1 MA's), (37, 8717), (39, 8735), (41, 8753), (43, 8762), (46, 8825), (49, 8903), (50, 8909), (52, 8975), (58, 9323),

Gene: Duplicity_15 Start: 9036, Stop: 9942, Start Num: 10

Candidate Starts for Duplicity_15:

(Start: 10 @9036 has 41 MA's), (18, 9144), (26, 9207), (34, 9312), (39, 9375), (40, 9381), (41, 9393), (42, 9396), (48, 9486), (51, 9588), (54, 9702), (57, 9759),

Gene: Eish_13 Start: 8528, Stop: 9464, Start Num: 8

Candidate Starts for Eish_13:

(Start: 3 @8435 has 6 MA's), (Start: 8 @8528 has 139 MA's), (Start: 9 @8534 has 66 MA's), (14, 8636), (21, 8666), (29, 8762), (Start: 30 @8786 has 1 MA's), (32, 8789), (33, 8792), (37, 8855), (39, 8873), (41, 8891), (42, 8894), (43, 8900), (46, 8963), (49, 9041), (52, 9113), (58, 9461),

Gene: EleanorGeorge_13 Start: 8579, Stop: 9515, Start Num: 9

Candidate Starts for EleanorGeorge_13:

(5, 8552), (Start: 9 @8579 has 66 MA's), (14, 8687), (21, 8717), (Start: 30 @8837 has 1 MA's), (35, 8870), (37, 8906), (39, 8924), (41, 8942), (43, 8951), (44, 8966), (45, 8969), (46, 9014), (49, 9092), (50, 9098), (52, 9164), (56, 9311), (58, 9512),

Gene: Emma_13 Start: 8576, Stop: 9512, Start Num: 9

Candidate Starts for Emma_13:

(5, 8549), (Start: 9 @8576 has 66 MA's), (14, 8684), (21, 8714), (Start: 30 @8834 has 1 MA's), (32, 8837), (33, 8840), (35, 8867), (37, 8903), (39, 8921), (41, 8939), (42, 8942), (43, 8948), (44, 8963), (45, 8966), (46, 9011), (49, 9089), (50, 9095), (52, 9161), (56, 9308), (58, 9509),

Gene: Enby_14 Start: 8390, Stop: 9326, Start Num: 8

Candidate Starts for Enby_14:

(Start: 3 @8297 has 6 MA's), (Start: 8 @8390 has 139 MA's), (Start: 9 @8396 has 66 MA's), (14, 8498), (21, 8528), (Start: 30 @8648 has 1 MA's), (37, 8717), (39, 8735), (41, 8753), (43, 8762), (46, 8825), (49, 8903), (50, 8909), (52, 8975), (58, 9323),

Gene: Eradicator_13 Start: 8533, Stop: 9469, Start Num: 8

Candidate Starts for Eradicator_13:

(Start: 8 @8533 has 139 MA's), (Start: 9 @8539 has 66 MA's), (14, 8641), (21, 8671), (29, 8767), (Start: 30 @8791 has 1 MA's), (37, 8860), (39, 8878), (41, 8896), (42, 8899), (43, 8905), (44, 8920), (45, 8923), (46, 8968), (49, 9046), (52, 9118), (58, 9466),

Gene: Estave1_13 Start: 8548, Stop: 9484, Start Num: 8

Candidate Starts for Estave1_13:

(Start: 8 @8548 has 139 MA's), (Start: 9 @8554 has 66 MA's), (14, 8656), (21, 8686), (29, 8782), (Start: 30 @8806 has 1 MA's), (37, 8875), (39, 8893), (41, 8911), (43, 8920), (44, 8935), (45, 8938), (46, 8983), (49, 9061), (52, 9133), (58, 9481),

Gene: Familton_54 Start: 25753, Stop: 26704, Start Num: 6

Candidate Starts for Familton_54:

(Start: 6 @25753 has 14 MA's), (Start: 7 @25765 has 3 MA's), (11, 25837), (15, 25882), (16, 25885), (21, 25909), (24, 25927), (26, 25957), (31, 26035), (32, 26038), (36, 26095), (39, 26119), (46, 26194), (50, 26278), (52, 26344), (53, 26440),

Gene: Fancypants_13 Start: 8539, Stop: 9475, Start Num: 8

Candidate Starts for Fancypants_13:

(Start: 3 @8446 has 6 MA's), (Start: 8 @8539 has 139 MA's), (Start: 9 @8545 has 66 MA's), (14, 8647), (21, 8677), (29, 8773), (Start: 30 @8797 has 1 MA's), (32, 8800), (33, 8803), (35, 8830), (37, 8866), (39, 8884), (41, 8902), (43, 8911), (46, 8974), (49, 9052), (52, 9124), (58, 9472),

Gene: Fastidio_13 Start: 8546, Stop: 9482, Start Num: 8

Candidate Starts for Fastidio_13:

(Start: 8 @8546 has 139 MA's), (Start: 9 @8552 has 66 MA's), (14, 8654), (21, 8684), (Start: 30 @8804 has 1 MA's), (35, 8837), (37, 8873), (39, 8891), (41, 8909), (43, 8918), (44, 8933), (45, 8936), (46, 8981), (49, 9059), (50, 9065), (52, 9131), (56, 9278), (58, 9479),

Gene: Filuzino_13 Start: 8578, Stop: 9514, Start Num: 9

Candidate Starts for Filuzino_13:

(5, 8551), (Start: 9 @8578 has 66 MA's), (14, 8686), (21, 8716), (Start: 30 @8836 has 1 MA's), (35, 8869), (37, 8905), (39, 8923), (41, 8941), (43, 8950), (44, 8965), (45, 8968), (46, 9013), (49, 9091), (50, 9097), (52, 9163), (56, 9310), (58, 9511),

Gene: Firehouse51_13 Start: 8577, Stop: 9513, Start Num: 9

Candidate Starts for Firehouse51_13:

(5, 8550), (Start: 9 @8577 has 66 MA's), (14, 8685), (21, 8715), (Start: 30 @8835 has 1 MA's), (35, 8868), (37, 8904), (39, 8922), (41, 8940), (42, 8943), (43, 8949), (44, 8964), (45, 8967), (46, 9012), (49, 9090), (50, 9096), (52, 9162), (56, 9309), (58, 9510),

Gene: Flathead_14 Start: 8409, Stop: 9345, Start Num: 9

Candidate Starts for Flathead_14:

(5, 8382), (Start: 9 @8409 has 66 MA's), (14, 8517), (19, 8541), (21, 8547), (Start: 30 @8667 has 1 MA's), (35, 8700), (37, 8736), (39, 8754), (41, 8772), (42, 8775), (43, 8781), (44, 8796), (45, 8799),

(46, 8844), (49, 8922), (50, 8928), (52, 8994), (56, 9141), (58, 9342),

Gene: Florinda_13 Start: 8559, Stop: 9495, Start Num: 8

Candidate Starts for Florinda_13:

(Start: 3 @8466 has 6 MA's), (Start: 8 @8559 has 139 MA's), (Start: 9 @8565 has 66 MA's), (14, 8667), (19, 8691), (21, 8697), (29, 8793), (Start: 30 @8817 has 1 MA's), (32, 8820), (33, 8823), (35, 8850), (37, 8886), (39, 8904), (41, 8922), (43, 8931), (46, 8994), (49, 9072), (52, 9144), (56, 9291), (58, 9492),

Gene: Frankie_14 Start: 8588, Stop: 9524, Start Num: 8

Candidate Starts for Frankie_14:

(Start: 8 @8588 has 139 MA's), (Start: 9 @8594 has 66 MA's), (14, 8696), (19, 8720), (21, 8726), (Start: 30 @8846 has 1 MA's), (35, 8879), (37, 8915), (39, 8933), (41, 8951), (42, 8954), (43, 8960), (44, 8975), (45, 8978), (46, 9023), (49, 9101), (50, 9107), (52, 9173), (58, 9521),

Gene: FreddyB_13 Start: 8538, Stop: 9474, Start Num: 8

Candidate Starts for FreddyB_13:

(Start: 3 @8445 has 6 MA's), (Start: 8 @8538 has 139 MA's), (Start: 9 @8544 has 66 MA's), (14, 8646), (21, 8676), (29, 8772), (Start: 30 @8796 has 1 MA's), (32, 8799), (33, 8802), (37, 8865), (39, 8883), (41, 8901), (43, 8910), (46, 8973), (49, 9051), (52, 9123), (58, 9471),

Gene: Fruitloop_13 Start: 8578, Stop: 9514, Start Num: 9

Candidate Starts for Fruitloop_13:

(5, 8551), (Start: 9 @8578 has 66 MA's), (14, 8686), (21, 8716), (Start: 30 @8836 has 1 MA's), (35, 8869), (37, 8905), (39, 8923), (41, 8941), (42, 8944), (43, 8950), (44, 8965), (45, 8968), (46, 9013), (49, 9091), (50, 9097), (52, 9163), (56, 9310), (58, 9511),

Gene: Fulbright_15 Start: 9036, Stop: 9942, Start Num: 10

Candidate Starts for Fulbright_15:

(Start: 10 @9036 has 41 MA's), (18, 9144), (26, 9207), (29, 9255), (34, 9312), (39, 9375), (40, 9381), (41, 9393), (42, 9396), (48, 9486), (51, 9588), (54, 9702), (57, 9759),

Gene: GUmbie_12 Start: 8572, Stop: 9508, Start Num: 9

Candidate Starts for GUmbie_12:

(5, 8545), (Start: 9 @8572 has 66 MA's), (14, 8680), (21, 8710), (Start: 30 @8830 has 1 MA's), (35, 8863), (37, 8899), (39, 8917), (41, 8935), (42, 8938), (43, 8944), (44, 8959), (45, 8962), (46, 9007), (49, 9085), (50, 9091), (52, 9157), (56, 9304), (58, 9505),

Gene: Galactic_13 Start: 8552, Stop: 9488, Start Num: 9

Candidate Starts for Galactic_13:

(5, 8525), (Start: 9 @8552 has 66 MA's), (14, 8660), (21, 8690), (Start: 30 @8810 has 1 MA's), (32, 8813), (33, 8816), (35, 8843), (37, 8879), (39, 8897), (41, 8915), (42, 8918), (43, 8924), (44, 8939), (45, 8942), (46, 8987), (49, 9065), (50, 9071), (52, 9137), (56, 9284), (58, 9485),

Gene: Gandalph_13 Start: 8550, Stop: 9486, Start Num: 8

Candidate Starts for Gandalph_13:

(Start: 8 @8550 has 139 MA's), (Start: 9 @8556 has 66 MA's), (14, 8658), (21, 8688), (29, 8784), (Start: 30 @8808 has 1 MA's), (37, 8877), (39, 8895), (41, 8913), (42, 8916), (43, 8922), (44, 8937), (45, 8940), (46, 8985), (49, 9063), (52, 9135), (58, 9483),

Gene: Geralt_13 Start: 8532, Stop: 9468, Start Num: 8

Candidate Starts for Geralt_13:

(Start: 8 @8532 has 139 MA's), (Start: 9 @8538 has 66 MA's), (14, 8640), (21, 8670), (29, 8766),
(Start: 30 @8790 has 1 MA's), (37, 8859), (39, 8877), (41, 8895), (42, 8898), (43, 8904), (44, 8919),
(45, 8922), (46, 8967), (49, 9045), (52, 9117), (58, 9465),

Gene: Gex_15 Start: 9035, Stop: 9941, Start Num: 10

Candidate Starts for Gex_15:

(Start: 10 @9035 has 41 MA's), (18, 9143), (26, 9206), (34, 9311), (39, 9374), (40, 9380), (41, 9392),
(42, 9395), (48, 9485), (51, 9587), (54, 9701), (57, 9758),

Gene: GigiOuiOui_13 Start: 8549, Stop: 9485, Start Num: 8

Candidate Starts for GigiOuiOui_13:

(Start: 8 @8549 has 139 MA's), (Start: 9 @8555 has 66 MA's), (14, 8657), (21, 8687), (29, 8783),
(Start: 30 @8807 has 1 MA's), (37, 8876), (39, 8894), (41, 8912), (42, 8915), (43, 8921), (44, 8936),
(45, 8939), (46, 8984), (49, 9062), (50, 9068), (52, 9134), (56, 9281), (58, 9482),

Gene: Girafales_14 Start: 8403, Stop: 9339, Start Num: 9

Candidate Starts for Girafales_14:

(5, 8376), (Start: 9 @8403 has 66 MA's), (14, 8511), (21, 8541), (Start: 30 @8661 has 1 MA's), (32,
8664), (33, 8667), (35, 8694), (37, 8730), (41, 8766), (42, 8769), (43, 8775), (44, 8790), (45, 8793),
(46, 8838), (49, 8916), (50, 8922), (52, 8988), (56, 9135), (58, 9336),

Gene: Girr_13 Start: 8542, Stop: 9478, Start Num: 8

Candidate Starts for Girr_13:

(Start: 3 @8449 has 6 MA's), (Start: 8 @8542 has 139 MA's), (Start: 9 @8548 has 66 MA's), (14,
8650), (21, 8680), (29, 8776), (Start: 30 @8800 has 1 MA's), (32, 8803), (33, 8806), (37, 8869), (39,
8887), (41, 8905), (42, 8908), (43, 8914), (46, 8977), (49, 9055), (50, 9061), (52, 9127), (58, 9475),

Gene: Gorge_13 Start: 8521, Stop: 9457, Start Num: 8

Candidate Starts for Gorge_13:

(Start: 8 @8521 has 139 MA's), (Start: 9 @8527 has 66 MA's), (14, 8629), (21, 8659), (29, 8755),
(Start: 30 @8779 has 1 MA's), (37, 8848), (39, 8866), (41, 8884), (42, 8887), (43, 8893), (44, 8908),
(45, 8911), (46, 8956), (49, 9034), (52, 9106), (58, 9454),

Gene: Guppsters_13 Start: 8577, Stop: 9513, Start Num: 9

Candidate Starts for Guppsters_13:

(5, 8550), (Start: 9 @8577 has 66 MA's), (14, 8685), (21, 8715), (Start: 30 @8835 has 1 MA's), (35,
8868), (37, 8904), (39, 8922), (41, 8940), (43, 8949), (46, 9012), (49, 9090), (52, 9162), (58, 9510),

Gene: Hades_13 Start: 8539, Stop: 9475, Start Num: 8

Candidate Starts for Hades_13:

(Start: 3 @8446 has 6 MA's), (Start: 8 @8539 has 139 MA's), (Start: 9 @8545 has 66 MA's), (14,
8647), (21, 8677), (29, 8773), (Start: 30 @8797 has 1 MA's), (32, 8800), (33, 8803), (37, 8866), (39,
8884), (41, 8902), (43, 8911), (46, 8974), (49, 9052), (50, 9058), (52, 9124), (58, 9472),

Gene: Hamulus_13 Start: 8583, Stop: 9519, Start Num: 9

Candidate Starts for Hamulus_13:

(5, 8556), (Start: 9 @8583 has 66 MA's), (14, 8691), (21, 8721), (Start: 30 @8841 has 1 MA's), (35,
8874), (37, 8910), (39, 8928), (41, 8946), (43, 8955), (44, 8970), (45, 8973), (46, 9018), (49, 9096),
(50, 9102), (52, 9168), (56, 9315), (58, 9516),

Gene: Hanako_15 Start: 9081, Stop: 9987, Start Num: 10

Candidate Starts for Hanako_15:

(Start: 10 @9081 has 41 MA's), (17, 9180), (18, 9189), (26, 9252), (29, 9300), (34, 9357), (39, 9420), (40, 9426), (41, 9438), (42, 9441), (47, 9528), (48, 9531), (51, 9633), (54, 9747), (57, 9804),

Gene: Harley_13 Start: 8528, Stop: 9464, Start Num: 8

Candidate Starts for Harley_13:

(Start: 3 @8435 has 6 MA's), (Start: 8 @8528 has 139 MA's), (Start: 9 @8534 has 66 MA's), (14, 8636), (21, 8666), (29, 8762), (Start: 30 @8786 has 1 MA's), (35, 8819), (39, 8873), (41, 8891), (43, 8900), (46, 8963), (49, 9041), (52, 9113), (58, 9461),

Gene: Hegedechwinu_14 Start: 8409, Stop: 9345, Start Num: 9

Candidate Starts for Hegedechwinu_14:

(5, 8382), (Start: 9 @8409 has 66 MA's), (14, 8517), (19, 8541), (21, 8547), (Start: 30 @8667 has 1 MA's), (32, 8670), (33, 8673), (35, 8700), (37, 8736), (39, 8754), (41, 8772), (42, 8775), (43, 8781), (44, 8796), (45, 8799), (46, 8844), (49, 8922), (50, 8928), (52, 8994), (56, 9141), (58, 9342),

Gene: Hlubikazi_13 Start: 8534, Stop: 9470, Start Num: 8

Candidate Starts for Hlubikazi_13:

(Start: 8 @8534 has 139 MA's), (Start: 9 @8540 has 66 MA's), (14, 8642), (21, 8672), (29, 8768), (Start: 30 @8792 has 1 MA's), (37, 8861), (39, 8879), (41, 8897), (42, 8900), (43, 8906), (44, 8921), (45, 8924), (46, 8969), (49, 9047), (52, 9119), (58, 9467),

Gene: lbhubesi_12 Start: 8528, Stop: 9464, Start Num: 8

Candidate Starts for lbhubesi_12:

(Start: 3 @8435 has 6 MA's), (Start: 8 @8528 has 139 MA's), (Start: 9 @8534 has 66 MA's), (14, 8636), (21, 8666), (29, 8762), (Start: 30 @8786 has 1 MA's), (35, 8819), (39, 8873), (41, 8891), (43, 8900), (46, 8963), (49, 9041), (52, 9113), (58, 9461),

Gene: Inventum_13 Start: 8532, Stop: 9468, Start Num: 8

Candidate Starts for Inventum_13:

(Start: 8 @8532 has 139 MA's), (Start: 9 @8538 has 66 MA's), (14, 8640), (21, 8670), (29, 8766), (Start: 30 @8790 has 1 MA's), (37, 8859), (39, 8877), (41, 8895), (42, 8898), (43, 8904), (44, 8919), (45, 8922), (46, 8967), (49, 9045), (52, 9117), (58, 9465),

Gene: IrishSherpFalk_13 Start: 8563, Stop: 9499, Start Num: 9

Candidate Starts for IrishSherpFalk_13:

(5, 8536), (Start: 9 @8563 has 66 MA's), (14, 8671), (21, 8701), (Start: 30 @8821 has 1 MA's), (35, 8854), (37, 8890), (39, 8908), (41, 8926), (43, 8935), (46, 8998), (49, 9076), (52, 9148), (58, 9496),

Gene: JalFarm20_14 Start: 8385, Stop: 9321, Start Num: 8

Candidate Starts for JalFarm20_14:

(Start: 8 @8385 has 139 MA's), (Start: 9 @8391 has 66 MA's), (14, 8493), (21, 8523), (29, 8619), (Start: 30 @8643 has 1 MA's), (37, 8712), (39, 8730), (41, 8748), (42, 8751), (43, 8757), (44, 8772), (45, 8775), (46, 8820), (49, 8898), (52, 8970), (58, 9318),

Gene: James_13 Start: 8529, Stop: 9465, Start Num: 8

Candidate Starts for James_13:

(Start: 3 @8436 has 6 MA's), (Start: 8 @8529 has 139 MA's), (Start: 9 @8535 has 66 MA's), (14, 8637), (21, 8667), (29, 8763), (Start: 30 @8787 has 1 MA's), (32, 8790), (33, 8793), (37, 8856), (39, 8874), (41, 8892), (43, 8901), (46, 8964), (49, 9042), (52, 9114), (58, 9462),

Gene: Jamie19_15 Start: 9081, Stop: 9987, Start Num: 10

Candidate Starts for Jamie19_15:

(Start: 10 @9081 has 41 MA's), (17, 9180), (18, 9189), (26, 9252), (29, 9300), (34, 9357), (39, 9420), (40, 9426), (41, 9438), (42, 9441), (47, 9528), (48, 9531), (51, 9633), (54, 9747), (57, 9804),

Gene: JangDynasty_53 Start: 25854, Stop: 26793, Start Num: 7

Candidate Starts for JangDynasty_53:

(Start: 6 @25842 has 14 MA's), (Start: 7 @25854 has 3 MA's), (11, 25926), (15, 25971), (16, 25974), (21, 25998), (24, 26016), (26, 26046), (31, 26124), (32, 26127), (36, 26184), (39, 26208), (46, 26283), (50, 26367), (52, 26433), (53, 26529),

Gene: Jacob_13 Start: 8537, Stop: 9473, Start Num: 8

Candidate Starts for Jacob_13:

(Start: 3 @8444 has 6 MA's), (Start: 8 @8537 has 139 MA's), (Start: 9 @8543 has 66 MA's), (14, 8645), (21, 8675), (29, 8771), (Start: 30 @8795 has 1 MA's), (32, 8798), (33, 8801), (37, 8864), (39, 8882), (41, 8900), (43, 8909), (46, 8972), (49, 9050), (52, 9122), (58, 9470),

Gene: Job42_14 Start: 8408, Stop: 9344, Start Num: 9

Candidate Starts for Job42_14:

(5, 8381), (Start: 9 @8408 has 66 MA's), (14, 8516), (21, 8546), (Start: 30 @8666 has 1 MA's), (32, 8669), (33, 8672), (35, 8699), (37, 8735), (39, 8753), (41, 8771), (42, 8774), (43, 8780), (44, 8795), (45, 8798), (46, 8843), (49, 8921), (50, 8927), (52, 8993), (56, 9140), (58, 9341),

Gene: JoeyJr_13 Start: 8532, Stop: 9468, Start Num: 8

Candidate Starts for JoeyJr_13:

(Start: 8 @8532 has 139 MA's), (Start: 9 @8538 has 66 MA's), (14, 8640), (21, 8670), (29, 8766), (Start: 30 @8790 has 1 MA's), (37, 8859), (39, 8877), (41, 8895), (42, 8898), (43, 8904), (44, 8919), (45, 8922), (46, 8967), (49, 9045), (52, 9117), (58, 9465),

Gene: Journey_15 Start: 9036, Stop: 9942, Start Num: 10

Candidate Starts for Journey_15:

(Start: 10 @9036 has 41 MA's), (18, 9144), (26, 9207), (29, 9255), (34, 9312), (39, 9375), (40, 9381), (41, 9393), (42, 9396), (48, 9486), (51, 9588), (54, 9702), (57, 9759),

Gene: Juice456_14 Start: 8391, Stop: 9327, Start Num: 8

Candidate Starts for Juice456_14:

(Start: 3 @8298 has 6 MA's), (Start: 8 @8391 has 139 MA's), (Start: 9 @8397 has 66 MA's), (14, 8499), (19, 8523), (21, 8529), (29, 8625), (Start: 30 @8649 has 1 MA's), (32, 8652), (33, 8655), (37, 8718), (39, 8736), (41, 8754), (43, 8763), (44, 8778), (45, 8781), (46, 8826), (49, 8904), (52, 8976), (58, 9324),

Gene: Juniper1_13 Start: 8529, Stop: 9465, Start Num: 8

Candidate Starts for Juniper1_13:

(Start: 3 @8436 has 6 MA's), (Start: 8 @8529 has 139 MA's), (Start: 9 @8535 has 66 MA's), (14, 8637), (19, 8661), (21, 8667), (29, 8763), (Start: 30 @8787 has 1 MA's), (35, 8820), (39, 8874), (42, 8895), (43, 8901), (46, 8964), (49, 9042), (52, 9114), (58, 9462),

Gene: Karhdo_13 Start: 8447, Stop: 9476, Start Num: 3

Candidate Starts for Karhdo_13:

(Start: 3 @8447 has 6 MA's), (Start: 8 @8540 has 139 MA's), (Start: 9 @8546 has 66 MA's), (14, 8648), (19, 8672), (21, 8678), (29, 8774), (Start: 30 @8798 has 1 MA's), (32, 8801), (33, 8804), (35, 8831), (37, 8867), (39, 8885), (41, 8903), (43, 8912), (46, 8975), (49, 9053), (52, 9125), (58, 9473),

Gene: Kenuha5_13 Start: 8545, Stop: 9481, Start Num: 9

Candidate Starts for Kenuha5_13:

(5, 8518), (Start: 9 @8545 has 66 MA's), (14, 8653), (19, 8677), (21, 8683), (Start: 30 @8803 has 1 MA's), (35, 8836), (37, 8872), (39, 8890), (41, 8908), (43, 8917), (44, 8932), (45, 8935), (46, 8980), (49, 9058), (50, 9064), (52, 9130), (56, 9277), (58, 9478),

Gene: Kersh_13 Start: 8532, Stop: 9468, Start Num: 8

Candidate Starts for Kersh_13:

(1, 8364), (2, 8433), (Start: 8 @8532 has 139 MA's), (Start: 9 @8538 has 66 MA's), (14, 8640), (21, 8670), (29, 8766), (Start: 30 @8790 has 1 MA's), (32, 8793), (33, 8796), (35, 8823), (39, 8877), (41, 8895), (43, 8904), (46, 8967), (49, 9045), (52, 9117), (58, 9465),

Gene: Kevin1_15 Start: 9056, Stop: 9962, Start Num: 10

Candidate Starts for Kevin1_15:

(Start: 10 @9056 has 41 MA's), (18, 9164), (20, 9176), (26, 9227), (29, 9275), (34, 9332), (39, 9395), (40, 9401), (42, 9416), (48, 9506), (50, 9554), (54, 9722), (57, 9779),

Gene: Kimberlium_13 Start: 8298, Stop: 9327, Start Num: 3

Candidate Starts for Kimberlium_13:

(Start: 3 @8298 has 6 MA's), (Start: 8 @8391 has 139 MA's), (Start: 9 @8397 has 66 MA's), (14, 8499), (19, 8523), (21, 8529), (29, 8625), (Start: 30 @8649 has 1 MA's), (32, 8652), (33, 8655), (37, 8718), (39, 8736), (41, 8754), (43, 8763), (44, 8778), (45, 8781), (46, 8826), (49, 8904), (52, 8976), (58, 9324),

Gene: KingMidas_13 Start: 8532, Stop: 9468, Start Num: 8

Candidate Starts for KingMidas_13:

(Start: 8 @8532 has 139 MA's), (Start: 9 @8538 has 66 MA's), (14, 8640), (21, 8670), (29, 8766), (Start: 30 @8790 has 1 MA's), (37, 8859), (39, 8877), (41, 8895), (42, 8898), (43, 8904), (44, 8919), (45, 8922), (46, 8967), (49, 9045), (50, 9051), (52, 9117), (58, 9465),

Gene: Kingsley_14 Start: 8383, Stop: 9319, Start Num: 8

Candidate Starts for Kingsley_14:

(Start: 8 @8383 has 139 MA's), (Start: 9 @8389 has 66 MA's), (14, 8491), (21, 8521), (29, 8617), (Start: 30 @8641 has 1 MA's), (37, 8710), (39, 8728), (41, 8746), (42, 8749), (43, 8755), (44, 8770), (45, 8773), (46, 8818), (49, 8896), (52, 8968), (58, 9316),

Gene: Koella_13 Start: 8532, Stop: 9468, Start Num: 8

Candidate Starts for Koella_13:

(Start: 8 @8532 has 139 MA's), (Start: 9 @8538 has 66 MA's), (14, 8640), (21, 8670), (29, 8766), (Start: 30 @8790 has 1 MA's), (37, 8859), (39, 8877), (41, 8895), (42, 8898), (43, 8904), (44, 8919), (45, 8922), (46, 8967), (49, 9045), (52, 9117), (58, 9465),

Gene: Krakatau_14 Start: 9229, Stop: 10165, Start Num: 9

Candidate Starts for Krakatau_14:

(5, 9202), (Start: 9 @9229 has 66 MA's), (14, 9337), (21, 9367), (Start: 30 @9487 has 1 MA's), (32, 9490), (33, 9493), (35, 9520), (37, 9556), (39, 9574), (41, 9592), (43, 9601), (44, 9616), (45, 9619), (46, 9664), (49, 9742), (50, 9748), (52, 9814), (56, 9961), (58, 10162),

Gene: Krili_52 Start: 25464, Stop: 26415, Start Num: 6

Candidate Starts for Krili_52:

(Start: 6 @25464 has 14 MA's), (Start: 7 @25476 has 3 MA's), (11, 25548), (15, 25593), (16, 25596), (21, 25620), (24, 25638), (26, 25668), (31, 25746), (32, 25749), (36, 25806), (39, 25830), (46, 25905), (50, 25989), (52, 26055), (53, 26151),

Gene: KristaRAM_14 Start: 9226, Stop: 10162, Start Num: 9

Candidate Starts for KristaRAM_14:

(5, 9199), (Start: 9 @9226 has 66 MA's), (14, 9334), (21, 9364), (Start: 30 @9484 has 1 MA's), (35, 9517), (37, 9553), (39, 9571), (41, 9589), (42, 9592), (43, 9598), (44, 9613), (45, 9616), (46, 9661), (49, 9739), (50, 9745), (52, 9811), (56, 9958), (58, 10159),

Gene: LastJedi_13 Start: 8528, Stop: 9464, Start Num: 8

Candidate Starts for LastJedi_13:

(Start: 8 @8528 has 139 MA's), (Start: 9 @8534 has 66 MA's), (14, 8636), (21, 8666), (29, 8762), (Start: 30 @8786 has 1 MA's), (32, 8789), (33, 8792), (37, 8855), (39, 8873), (41, 8891), (43, 8900), (46, 8963), (49, 9041), (52, 9113), (58, 9461),

Gene: Latretium_13 Start: 8521, Stop: 9457, Start Num: 8

Candidate Starts for Latretium_13:

(Start: 8 @8521 has 139 MA's), (Start: 9 @8527 has 66 MA's), (14, 8629), (21, 8659), (29, 8755), (Start: 30 @8779 has 1 MA's), (37, 8848), (39, 8866), (41, 8884), (42, 8887), (43, 8893), (44, 8908), (45, 8911), (46, 8956), (49, 9034), (52, 9106), (58, 9454),

Gene: Leozinho_14 Start: 8390, Stop: 9326, Start Num: 8

Candidate Starts for Leozinho_14:

(2, 8291), (Start: 8 @8390 has 139 MA's), (Start: 9 @8396 has 66 MA's), (14, 8498), (21, 8528), (29, 8624), (Start: 30 @8648 has 1 MA's), (32, 8651), (33, 8654), (35, 8681), (37, 8717), (39, 8735), (41, 8753), (43, 8762), (46, 8825), (49, 8903), (52, 8975), (58, 9323),

Gene: Leperchaun_13 Start: 8521, Stop: 9457, Start Num: 8

Candidate Starts for Leperchaun_13:

(Start: 8 @8521 has 139 MA's), (Start: 9 @8527 has 66 MA's), (14, 8629), (21, 8659), (29, 8755), (Start: 30 @8779 has 1 MA's), (37, 8848), (39, 8866), (41, 8884), (42, 8887), (43, 8893), (44, 8908), (45, 8911), (46, 8956), (49, 9034), (52, 9106), (58, 9454),

Gene: LilMoolah_12 Start: 8675, Stop: 9437, Start Num: 22

Candidate Starts for LilMoolah_12:

(Start: 22 @8675 has 1 MA's), (23, 8678), (27, 8723), (Start: 30 @8759 has 1 MA's), (37, 8828), (39, 8846), (41, 8864), (42, 8867), (43, 8873), (44, 8888), (45, 8891), (46, 8936), (49, 9014), (52, 9086), (58, 9434),

Gene: LittleShirley_14 Start: 8386, Stop: 9322, Start Num: 8

Candidate Starts for LittleShirley_14:

(Start: 8 @8386 has 139 MA's), (Start: 9 @8392 has 66 MA's), (14, 8494), (21, 8524), (29, 8620), (Start: 30 @8644 has 1 MA's), (37, 8713), (39, 8731), (41, 8749), (42, 8752), (43, 8758), (44, 8773), (45, 8776), (46, 8821), (49, 8899), (52, 8971), (56, 9118), (58, 9319),

Gene: Lizziana_13 Start: 8538, Stop: 9474, Start Num: 8

Candidate Starts for Lizziana_13:

(Start: 3 @8445 has 6 MA's), (Start: 8 @8538 has 139 MA's), (Start: 9 @8544 has 66 MA's), (14, 8646), (21, 8676), (29, 8772), (Start: 30 @8796 has 1 MA's), (32, 8799), (33, 8802), (37, 8865), (39, 8883), (41, 8901), (43, 8910), (46, 8973), (49, 9051), (52, 9123), (58, 9471),

Gene: Llama_13 Start: 8535, Stop: 9471, Start Num: 8

Candidate Starts for Llama_13:

(Start: 3 @8442 has 6 MA's), (Start: 8 @8535 has 139 MA's), (Start: 9 @8541 has 66 MA's), (14, 8643), (21, 8673), (29, 8769), (Start: 30 @8793 has 1 MA's), (32, 8796), (33, 8799), (35, 8826), (37, 8862), (39, 8880), (41, 8898), (43, 8907), (46, 8970), (49, 9048), (52, 9120), (58, 9468),

Gene: Lorde_14 Start: 8390, Stop: 9326, Start Num: 8

Candidate Starts for Lorde_14:

(Start: 3 @8297 has 6 MA's), (Start: 8 @8390 has 139 MA's), (Start: 9 @8396 has 66 MA's), (14, 8498), (21, 8528), (Start: 30 @8648 has 1 MA's), (37, 8717), (39, 8735), (41, 8753), (43, 8762), (46, 8825), (49, 8903), (50, 8909), (52, 8975), (58, 9323),

Gene: LunaBlu_13 Start: 8552, Stop: 9488, Start Num: 9

Candidate Starts for LunaBlu_13:

(5, 8525), (Start: 9 @8552 has 66 MA's), (14, 8660), (19, 8684), (21, 8690), (Start: 30 @8810 has 1 MA's), (32, 8813), (33, 8816), (35, 8843), (37, 8879), (39, 8897), (41, 8915), (42, 8918), (43, 8924), (44, 8939), (45, 8942), (46, 8987), (49, 9065), (50, 9071), (52, 9137), (56, 9284), (58, 9485),

Gene: LunaStella_14 Start: 8979, Stop: 9921, Start Num: 8

Candidate Starts for LunaStella_14:

(Start: 8 @8979 has 139 MA's), (11, 9051), (12, 9072), (13, 9075), (15, 9096), (21, 9123), (25, 9159), (35, 9276), (38, 9327), (46, 9435), (47, 9468), (49, 9513), (50, 9519), (52, 9585),

Gene: MadMen_13 Start: 8561, Stop: 9497, Start Num: 8

Candidate Starts for MadMen_13:

(Start: 8 @8561 has 139 MA's), (Start: 9 @8567 has 66 MA's), (14, 8669), (21, 8699), (Start: 30 @8819 has 1 MA's), (37, 8888), (39, 8906), (41, 8924), (43, 8933), (44, 8948), (45, 8951), (46, 8996), (49, 9074), (52, 9146), (58, 9494),

Gene: Madiba_14 Start: 8404, Stop: 9340, Start Num: 9

Candidate Starts for Madiba_14:

(5, 8377), (Start: 9 @8404 has 66 MA's), (14, 8512), (21, 8542), (Start: 30 @8662 has 1 MA's), (35, 8695), (37, 8731), (39, 8749), (41, 8767), (43, 8776), (44, 8791), (45, 8794), (46, 8839), (49, 8917), (50, 8923), (52, 8989), (56, 9136), (58, 9337),

Gene: Magsby_15 Start: 9036, Stop: 9942, Start Num: 10

Candidate Starts for Magsby_15:

(Start: 10 @9036 has 41 MA's), (18, 9144), (26, 9207), (29, 9255), (34, 9312), (39, 9375), (40, 9381), (41, 9393), (42, 9396), (48, 9486), (51, 9588), (54, 9702), (57, 9759),

Gene: Mahavrat_13 Start: 8526, Stop: 9462, Start Num: 8

Candidate Starts for Mahavrat_13:

(Start: 3 @8433 has 6 MA's), (Start: 8 @8526 has 139 MA's), (Start: 9 @8532 has 66 MA's), (14, 8634), (19, 8658), (21, 8664), (29, 8760), (Start: 30 @8784 has 1 MA's), (35, 8817), (39, 8871), (42, 8892), (43, 8898), (46, 8961), (49, 9039), (52, 9111), (58, 9459),

Gene: Mandlovu_13 Start: 8534, Stop: 9470, Start Num: 8

Candidate Starts for Mandlovu_13:

(Start: 8 @8534 has 139 MA's), (Start: 9 @8540 has 66 MA's), (14, 8642), (21, 8672), (29, 8768), (Start: 30 @8792 has 1 MA's), (37, 8861), (39, 8879), (41, 8897), (42, 8900), (43, 8906), (44, 8921), (45, 8924), (46, 8969), (49, 9047), (52, 9119), (58, 9467),

Gene: Mantra_13 Start: 8549, Stop: 9485, Start Num: 8

Candidate Starts for Mantra_13:

(Start: 8 @8549 has 139 MA's), (Start: 9 @8555 has 66 MA's), (14, 8657), (21, 8687), (29, 8783), (Start: 30 @8807 has 1 MA's), (37, 8876), (39, 8894), (41, 8912), (42, 8915), (43, 8921), (45, 8939), (46, 8984), (49, 9062), (52, 9134), (58, 9482),

Gene: Maravista_13 Start: 8526, Stop: 9462, Start Num: 8

Candidate Starts for Maravista_13:

(Start: 3 @8433 has 6 MA's), (Start: 8 @8526 has 139 MA's), (Start: 9 @8532 has 66 MA's), (14, 8634), (21, 8664), (29, 8760), (Start: 30 @8784 has 1 MA's), (32, 8787), (33, 8790), (37, 8853), (39, 8871), (41, 8889), (43, 8898), (46, 8961), (49, 9039), (52, 9111), (58, 9459),

Gene: Marker_14 Start: 8397, Stop: 9333, Start Num: 8

Candidate Starts for Marker_14:

(Start: 8 @8397 has 139 MA's), (14, 8505), (21, 8535), (29, 8631), (Start: 30 @8655 has 1 MA's), (32, 8658), (33, 8661), (35, 8688), (37, 8724), (39, 8742), (41, 8760), (42, 8763), (43, 8769), (44, 8784), (45, 8787), (46, 8832), (49, 8910), (50, 8916), (52, 8982), (56, 9129), (58, 9330),

Gene: Martik_13 Start: 8538, Stop: 9474, Start Num: 8

Candidate Starts for Martik_13:

(Start: 3 @8445 has 6 MA's), (Start: 8 @8538 has 139 MA's), (Start: 9 @8544 has 66 MA's), (14, 8646), (21, 8676), (29, 8772), (Start: 30 @8796 has 1 MA's), (32, 8799), (33, 8802), (37, 8865), (39, 8883), (41, 8901), (43, 8910), (46, 8973), (49, 9051), (52, 9123), (58, 9471),

Gene: Mattes_13 Start: 8529, Stop: 9465, Start Num: 8

Candidate Starts for Mattes_13:

(Start: 3 @8436 has 6 MA's), (Start: 8 @8529 has 139 MA's), (Start: 9 @8535 has 66 MA's), (14, 8637), (21, 8667), (29, 8763), (Start: 30 @8787 has 1 MA's), (32, 8790), (33, 8793), (37, 8856), (39, 8874), (41, 8892), (43, 8901), (46, 8964), (49, 9042), (52, 9114), (58, 9462),

Gene: Melissauren88_13 Start: 8577, Stop: 9513, Start Num: 9

Candidate Starts for Melissauren88_13:

(5, 8550), (Start: 9 @8577 has 66 MA's), (14, 8685), (21, 8715), (Start: 30 @8835 has 1 MA's), (35, 8868), (37, 8904), (39, 8922), (41, 8940), (42, 8943), (43, 8949), (44, 8964), (45, 8967), (46, 9012), (49, 9090), (50, 9096), (52, 9162), (56, 9309), (58, 9510),

Gene: Melville_15 Start: 9036, Stop: 9942, Start Num: 10

Candidate Starts for Melville_15:

(Start: 10 @9036 has 41 MA's), (18, 9144), (26, 9207), (29, 9255), (34, 9312), (39, 9375), (40, 9381), (41, 9393), (42, 9396), (48, 9486), (51, 9588), (54, 9702), (57, 9759),

Gene: MichelleMyBell_15 Start: 9075, Stop: 9981, Start Num: 10

Candidate Starts for MichelleMyBell_15:

(Start: 10 @9075 has 41 MA's), (18, 9183), (20, 9195), (26, 9246), (29, 9294), (34, 9351), (39, 9414), (40, 9420), (42, 9435), (48, 9525), (50, 9573), (54, 9741), (57, 9798),

Gene: MilanaBonita_14 Start: 9227, Stop: 10163, Start Num: 9

Candidate Starts for MilanaBonita_14:

(5, 9200), (Start: 9 @9227 has 66 MA's), (14, 9335), (21, 9365), (Start: 30 @9485 has 1 MA's), (35, 9518), (37, 9554), (39, 9572), (41, 9590), (43, 9599), (44, 9614), (45, 9617), (46, 9662), (49, 9740), (50, 9746), (52, 9812), (56, 9959), (58, 10160),

Gene: MilleniumForce_14 Start: 9223, Stop: 10159, Start Num: 9

Candidate Starts for MilleniumForce_14:

(5, 9196), (Start: 9 @9223 has 66 MA's), (14, 9331), (21, 9361), (Start: 30 @9481 has 1 MA's), (32, 9484), (33, 9487), (35, 9514), (37, 9550), (39, 9568), (41, 9586), (42, 9589), (43, 9595), (44, 9610), (45, 9613), (46, 9658), (49, 9736), (50, 9742), (52, 9808), (56, 9955), (58, 10156),

Gene: MinionDave_14 Start: 9227, Stop: 10163, Start Num: 9

Candidate Starts for MinionDave_14:

(5, 9200), (Start: 9 @9227 has 66 MA's), (14, 9335), (21, 9365), (Start: 30 @9485 has 1 MA's), (37, 9554), (39, 9572), (41, 9590), (43, 9599), (46, 9662), (49, 9740), (50, 9746), (52, 9812), (56, 9959), (58, 10160),

Gene: Misha28_14 Start: 8399, Stop: 9335, Start Num: 8

Candidate Starts for Misha28_14:

(Start: 8 @8399 has 139 MA's), (Start: 9 @8405 has 66 MA's), (14, 8507), (19, 8531), (21, 8537), (Start: 30 @8657 has 1 MA's), (35, 8690), (37, 8726), (39, 8744), (41, 8762), (42, 8765), (43, 8771), (44, 8786), (45, 8789), (46, 8834), (49, 8912), (52, 8984), (56, 9131), (58, 9332),

Gene: MisterCuddles_13 Start: 8542, Stop: 9478, Start Num: 8

Candidate Starts for MisterCuddles_13:

(Start: 3 @8449 has 6 MA's), (Start: 8 @8542 has 139 MA's), (Start: 9 @8548 has 66 MA's), (14, 8650), (21, 8680), (29, 8776), (Start: 30 @8800 has 1 MA's), (32, 8803), (33, 8806), (37, 8869), (39, 8887), (41, 8905), (42, 8908), (43, 8914), (46, 8977), (49, 9055), (50, 9061), (52, 9127), (58, 9475),

Gene: Modragons_13 Start: 8535, Stop: 9471, Start Num: 8

Candidate Starts for Modragons_13:

(Start: 3 @8442 has 6 MA's), (Start: 8 @8535 has 139 MA's), (Start: 9 @8541 has 66 MA's), (14, 8643), (21, 8673), (29, 8769), (Start: 30 @8793 has 1 MA's), (32, 8796), (33, 8799), (35, 8826), (37, 8862), (39, 8880), (41, 8898), (43, 8907), (46, 8970), (49, 9048), (52, 9120), (58, 9468),

Gene: Moonbeam_13 Start: 8539, Stop: 9475, Start Num: 8

Candidate Starts for Moonbeam_13:

(Start: 3 @8446 has 6 MA's), (Start: 8 @8539 has 139 MA's), (Start: 9 @8545 has 66 MA's), (14, 8647), (19, 8671), (21, 8677), (29, 8773), (Start: 30 @8797 has 1 MA's), (32, 8800), (33, 8803), (35, 8830), (37, 8866), (39, 8884), (41, 8902), (43, 8911), (46, 8974), (49, 9052), (50, 9058), (52, 9124), (56, 9271), (58, 9472),

Gene: Mori_52 Start: 25335, Stop: 26286, Start Num: 6

Candidate Starts for Mori_52:

(Start: 6 @25335 has 14 MA's), (Start: 7 @25347 has 3 MA's), (11, 25419), (15, 25464), (16, 25467), (21, 25491), (24, 25509), (26, 25539), (31, 25617), (32, 25620), (36, 25677), (39, 25701), (46, 25776), (50, 25860), (52, 25926), (53, 26022),

Gene: Mova_14 Start: 8392, Stop: 9328, Start Num: 8

Candidate Starts for Mova_14:

(Start: 3 @8299 has 6 MA's), (Start: 8 @8392 has 139 MA's), (Start: 9 @8398 has 66 MA's), (14, 8500), (21, 8530), (29, 8626), (Start: 30 @8650 has 1 MA's), (37, 8719), (39, 8737), (42, 8758), (43, 8764), (46, 8827), (49, 8905), (52, 8977), (58, 9325),

Gene: Mozy_13 Start: 8425, Stop: 9361, Start Num: 9

Candidate Starts for Mozy_13:

(5, 8398), (Start: 9 @8425 has 66 MA's), (14, 8533), (21, 8563), (28, 8638), (Start: 30 @8683 has 1 MA's), (32, 8686), (33, 8689), (35, 8716), (37, 8752), (41, 8788), (42, 8791), (43, 8797), (44, 8812), (45, 8815), (46, 8860), (49, 8938), (50, 8944), (52, 9010), (58, 9358),

Gene: Murai_53 Start: 25525, Stop: 26476, Start Num: 6

Candidate Starts for Murai_53:

(Start: 6 @25525 has 14 MA's), (Start: 7 @25537 has 3 MA's), (11, 25609), (15, 25654), (16, 25657), (21, 25681), (24, 25699), (26, 25729), (31, 25807), (32, 25810), (36, 25867), (39, 25891), (46, 25966), (50, 26050), (52, 26116), (53, 26212),

Gene: Mutaforma13_13 Start: 8576, Stop: 9512, Start Num: 9

Candidate Starts for Mutaforma13_13:

(5, 8549), (Start: 9 @8576 has 66 MA's), (14, 8684), (19, 8708), (21, 8714), (Start: 30 @8834 has 1 MA's), (35, 8867), (37, 8903), (39, 8921), (41, 8939), (43, 8948), (44, 8963), (45, 8966), (46, 9011), (49, 9089), (50, 9095), (52, 9161), (58, 9509),

Gene: Nenae_15 Start: 9081, Stop: 9987, Start Num: 10

Candidate Starts for Nenae_15:

(Start: 10 @9081 has 41 MA's), (17, 9180), (18, 9189), (26, 9252), (29, 9300), (34, 9357), (39, 9420), (40, 9426), (41, 9438), (42, 9441), (47, 9528), (48, 9531), (51, 9633), (54, 9747), (57, 9804),

Gene: NiebruSaylor_52 Start: 25336, Stop: 26287, Start Num: 6

Candidate Starts for NiebruSaylor_52:

(Start: 6 @25336 has 14 MA's), (Start: 7 @25348 has 3 MA's), (11, 25420), (15, 25465), (16, 25468), (21, 25492), (24, 25510), (26, 25540), (31, 25618), (32, 25621), (36, 25678), (39, 25702), (46, 25777), (50, 25861), (52, 25927), (53, 26023),

Gene: Nimbo_13 Start: 8532, Stop: 9468, Start Num: 8

Candidate Starts for Nimbo_13:

(Start: 8 @8532 has 139 MA's), (Start: 9 @8538 has 66 MA's), (14, 8640), (21, 8670), (29, 8766), (Start: 30 @8790 has 1 MA's), (37, 8859), (39, 8877), (41, 8895), (42, 8898), (43, 8904), (44, 8919), (45, 8922), (46, 8967), (49, 9045), (52, 9117), (58, 9465),

Gene: Nitzel_14 Start: 9198, Stop: 10134, Start Num: 8

Candidate Starts for Nitzel_14:

(Start: 8 @9198 has 139 MA's), (Start: 9 @9204 has 66 MA's), (14, 9306), (21, 9336), (29, 9432), (Start: 30 @9456 has 1 MA's), (37, 9525), (39, 9543), (41, 9561), (42, 9564), (43, 9570), (44, 9585), (45, 9588), (46, 9633), (49, 9711), (52, 9783), (58, 10131),

Gene: Nivrat_13 Start: 8537, Stop: 9473, Start Num: 8

Candidate Starts for Nivrat_13:

(Start: 3 @8444 has 6 MA's), (Start: 8 @8537 has 139 MA's), (Start: 9 @8543 has 66 MA's), (14, 8645), (21, 8675), (29, 8771), (Start: 30 @8795 has 1 MA's), (32, 8798), (33, 8801), (37, 8864), (39, 8882), (41, 8900), (43, 8909), (46, 8972), (49, 9050), (52, 9122), (58, 9470),

Gene: NormanBulbieJr_13 Start: 8523, Stop: 9459, Start Num: 8

Candidate Starts for NormanBulbieJr_13:

(1, 8358), (2, 8427), (Start: 8 @8523 has 139 MA's), (Start: 9 @8529 has 66 MA's), (14, 8631), (21, 8661), (29, 8757), (Start: 30 @8781 has 1 MA's), (39, 8868), (41, 8886), (43, 8895), (46, 8958), (49, 9036), (52, 9108), (58, 9456),

Gene: Ochi17_13 Start: 8535, Stop: 9471, Start Num: 8

Candidate Starts for Ochi17_13:

(Start: 3 @8442 has 6 MA's), (Start: 8 @8535 has 139 MA's), (Start: 9 @8541 has 66 MA's), (14, 8643), (21, 8673), (29, 8769), (Start: 30 @8793 has 1 MA's), (32, 8796), (33, 8799), (35, 8826), (37, 8862), (39, 8880), (41, 8898), (43, 8907), (46, 8970), (49, 9048), (52, 9120), (58, 9468),

Gene: OfUltron_13 Start: 8535, Stop: 9471, Start Num: 8

Candidate Starts for OfUltron_13:

(Start: 3 @8442 has 6 MA's), (Start: 8 @8535 has 139 MA's), (Start: 9 @8541 has 66 MA's), (14, 8643), (21, 8673), (29, 8769), (Start: 30 @8793 has 1 MA's), (32, 8796), (33, 8799), (35, 8826), (37, 8862), (39, 8880), (41, 8898), (43, 8907), (46, 8970), (49, 9048), (52, 9120), (58, 9468),

Gene: Ogoopogo_16 Start: 8698, Stop: 9727, Start Num: 3

Candidate Starts for Ogoopogo_16:

(Start: 3 @8698 has 6 MA's), (Start: 8 @8791 has 139 MA's), (Start: 9 @8797 has 66 MA's), (14, 8899), (21, 8929), (29, 9025), (Start: 30 @9049 has 1 MA's), (37, 9118), (39, 9136), (41, 9154), (43, 9163), (44, 9178), (45, 9181), (46, 9226), (49, 9304), (52, 9376), (58, 9724),

Gene: OldBen_13 Start: 8532, Stop: 9468, Start Num: 8

Candidate Starts for OldBen_13:

(Start: 8 @8532 has 139 MA's), (Start: 9 @8538 has 66 MA's), (14, 8640), (21, 8670), (29, 8766), (Start: 30 @8790 has 1 MA's), (37, 8859), (39, 8877), (41, 8895), (42, 8898), (43, 8904), (44, 8919), (45, 8922), (46, 8967), (49, 9045), (52, 9117), (58, 9465),

Gene: OlympiaSaint_13 Start: 8556, Stop: 9492, Start Num: 9

Candidate Starts for OlympiaSaint_13:

(5, 8529), (Start: 9 @8556 has 66 MA's), (14, 8664), (21, 8694), (Start: 30 @8814 has 1 MA's), (35, 8847), (37, 8883), (39, 8901), (41, 8919), (43, 8928), (44, 8943), (45, 8946), (46, 8991), (49, 9069), (52, 9141), (58, 9489),

Gene: Ovechkin_13 Start: 8577, Stop: 9513, Start Num: 9

Candidate Starts for Ovechkin_13:

(5, 8550), (Start: 9 @8577 has 66 MA's), (14, 8685), (21, 8715), (Start: 30 @8835 has 1 MA's), (35, 8868), (37, 8904), (39, 8922), (41, 8940), (42, 8943), (43, 8949), (44, 8964), (45, 8967), (46, 9012), (49, 9090), (50, 9096), (52, 9162), (56, 9309), (58, 9510),

Gene: OwlsT2W_14 Start: 8398, Stop: 9334, Start Num: 8

Candidate Starts for OwlsT2W_14:

(Start: 8 @8398 has 139 MA's), (Start: 9 @8404 has 66 MA's), (14, 8506), (21, 8536), (29, 8632), (Start: 30 @8656 has 1 MA's), (37, 8725), (39, 8743), (41, 8761), (42, 8764), (43, 8770), (44, 8785), (45, 8788), (46, 8833), (49, 8911), (52, 8983), (58, 9331),

Gene: PHappiness_13 Start: 8768, Stop: 9446, Start Num: 30

Candidate Starts for PHappiness_13:

(Start: 30 @8768 has 1 MA's), (37, 8837), (39, 8855), (41, 8873), (42, 8876), (43, 8882), (44, 8897), (45, 8900), (46, 8945), (49, 9023), (52, 9095), (58, 9443),

Gene: Pacc40_13 Start: 8532, Stop: 9468, Start Num: 8

Candidate Starts for Pacc40_13:

(Start: 8 @8532 has 139 MA's), (Start: 9 @8538 has 66 MA's), (14, 8640), (21, 8670), (29, 8766), (Start: 30 @8790 has 1 MA's), (37, 8859), (39, 8877), (41, 8895), (42, 8898), (43, 8904), (44, 8919), (45, 8922), (46, 8967), (49, 9045), (52, 9117), (58, 9465),

Gene: Panchino_15 Start: 9057, Stop: 9963, Start Num: 10

Candidate Starts for Panchino_15:

(Start: 10 @9057 has 41 MA's), (18, 9165), (26, 9228), (29, 9276), (34, 9333), (39, 9396), (40, 9402), (41, 9414), (42, 9417), (47, 9504), (48, 9507), (51, 9609), (54, 9723), (57, 9780),

Gene: Parmesanjohn_15 Start: 9036, Stop: 9942, Start Num: 10

Candidate Starts for Parmesanjohn_15:

(Start: 10 @9036 has 41 MA's), (18, 9144), (26, 9207), (34, 9312), (39, 9375), (40, 9381), (41, 9393), (42, 9396), (48, 9486), (51, 9588), (54, 9702), (57, 9759),

Gene: Phalconet_13 Start: 8579, Stop: 9515, Start Num: 9

Candidate Starts for Phalconet_13:

(5, 8552), (Start: 9 @8579 has 66 MA's), (14, 8687), (21, 8717), (Start: 30 @8837 has 1 MA's), (35, 8870), (37, 8906), (39, 8924), (41, 8942), (43, 8951), (44, 8966), (45, 8969), (46, 9014), (49, 9092), (50, 9098), (52, 9164), (56, 9311), (58, 9512),

Gene: PhancyPhin_15 Start: 9081, Stop: 9987, Start Num: 10

Candidate Starts for PhancyPhin_15:

(Start: 10 @9081 has 41 MA's), (17, 9180), (18, 9189), (26, 9252), (29, 9300), (34, 9357), (39, 9420), (40, 9426), (41, 9438), (42, 9441), (47, 9528), (48, 9531), (51, 9633), (54, 9747), (57, 9804),

Gene: Phanphagia_13 Start: 8578, Stop: 9514, Start Num: 9

Candidate Starts for Phanphagia_13:

(5, 8551), (Start: 9 @8578 has 66 MA's), (14, 8686), (21, 8716), (Start: 30 @8836 has 1 MA's), (32, 8839), (33, 8842), (35, 8869), (37, 8905), (39, 8923), (41, 8941), (43, 8950), (44, 8965), (45, 8968), (46, 9013), (49, 9091), (50, 9097), (52, 9163), (56, 9310), (58, 9511),

Gene: Phasih_13 Start: 8571, Stop: 9507, Start Num: 9

Candidate Starts for Phasih_13:

(5, 8544), (Start: 9 @8571 has 66 MA's), (14, 8679), (21, 8709), (Start: 30 @8829 has 1 MA's), (35, 8862), (37, 8898), (39, 8916), (41, 8934), (43, 8943), (44, 8958), (45, 8961), (46, 9006), (49, 9084), (50, 9090), (52, 9156), (56, 9303), (58, 9504),

Gene: Phatniss_13 Start: 8532, Stop: 9468, Start Num: 8

Candidate Starts for Phatniss_13:

(Start: 8 @8532 has 139 MA's), (Start: 9 @8538 has 66 MA's), (14, 8640), (21, 8670), (29, 8766), (Start: 30 @8790 has 1 MA's), (37, 8859), (39, 8877), (41, 8895), (42, 8898), (43, 8904), (44, 8919), (45, 8922), (46, 8967), (49, 9045), (52, 9117), (58, 9465),

Gene: PhesterPhotato_13 Start: 8578, Stop: 9514, Start Num: 9

Candidate Starts for PhesterPhotato_13:

(5, 8551), (Start: 9 @8578 has 66 MA's), (14, 8686), (21, 8716), (Start: 30 @8836 has 1 MA's), (35, 8869), (37, 8905), (41, 8941), (43, 8950), (44, 8965), (45, 8968), (46, 9013), (49, 9091), (50, 9097), (52, 9163), (56, 9310), (58, 9511),

Gene: Philonius_15 Start: 9036, Stop: 9942, Start Num: 10

Candidate Starts for Philonius_15:

(Start: 10 @9036 has 41 MA's), (18, 9144), (26, 9207), (29, 9255), (34, 9312), (39, 9375), (40, 9381), (41, 9393), (42, 9396), (48, 9486), (51, 9588), (54, 9702), (57, 9759),

Gene: Philus_13 Start: 8537, Stop: 9473, Start Num: 8

Candidate Starts for Philus_13:

(Start: 3 @8444 has 6 MA's), (Start: 8 @8537 has 139 MA's), (Start: 9 @8543 has 66 MA's), (14, 8645), (21, 8675), (29, 8771), (Start: 30 @8795 has 1 MA's), (32, 8798), (33, 8801), (37, 8864), (39, 8882), (41, 8900), (43, 8909), (46, 8972), (49, 9050), (52, 9122), (58, 9470),

Gene: Phloss_15 Start: 9036, Stop: 9942, Start Num: 10

Candidate Starts for Phloss_15:

(Start: 10 @9036 has 41 MA's), (18, 9144), (26, 9207), (34, 9312), (39, 9375), (40, 9381), (41, 9393), (42, 9396), (48, 9486), (51, 9588), (54, 9702), (57, 9759),

Gene: Phrann_15 Start: 9081, Stop: 9987, Start Num: 10

Candidate Starts for Phrann_15:

(Start: 10 @9081 has 41 MA's), (17, 9180), (18, 9189), (26, 9252), (29, 9300), (34, 9357), (39, 9420), (40, 9426), (41, 9438), (42, 9441), (47, 9528), (48, 9531), (54, 9747), (57, 9804),

Gene: Piper2020_14 Start: 8399, Stop: 9335, Start Num: 8

Candidate Starts for Piper2020_14:

(Start: 8 @8399 has 139 MA's), (Start: 9 @8405 has 66 MA's), (14, 8507), (21, 8537), (29, 8633), (Start: 30 @8657 has 1 MA's), (37, 8726), (39, 8744), (41, 8762), (42, 8765), (43, 8771), (44, 8786), (45, 8789), (46, 8834), (49, 8912), (52, 8984), (56, 9131), (58, 9332),

Gene: Pippy_12 Start: 8520, Stop: 9456, Start Num: 8

Candidate Starts for Pippy_12:

(Start: 8 @8520 has 139 MA's), (Start: 9 @8526 has 66 MA's), (14, 8628), (21, 8658), (29, 8754), (Start: 30 @8778 has 1 MA's), (37, 8847), (39, 8865), (41, 8883), (42, 8886), (43, 8892), (44, 8907), (45, 8910), (46, 8955), (49, 9033), (52, 9105), (58, 9453),

Gene: Pipsqueaks_15 Start: 9036, Stop: 9942, Start Num: 10

Candidate Starts for Pipsqueaks_15:

(Start: 10 @9036 has 41 MA's), (18, 9144), (26, 9207), (34, 9312), (39, 9375), (40, 9381), (41, 9393), (42, 9396), (48, 9486), (51, 9588), (54, 9702), (57, 9759),

Gene: Plumbus_14 Start: 8391, Stop: 9327, Start Num: 8

Candidate Starts for Plumbus_14:

(Start: 3 @8298 has 6 MA's), (Start: 8 @8391 has 139 MA's), (Start: 9 @8397 has 66 MA's), (14, 8499), (19, 8523), (21, 8529), (29, 8625), (Start: 30 @8649 has 1 MA's), (32, 8652), (33, 8655), (37, 8718), (39, 8736), (41, 8754), (43, 8763), (44, 8778), (45, 8781), (46, 8826), (49, 8904), (52, 8976), (58, 9324),

Gene: Poenanya_13 Start: 8532, Stop: 9468, Start Num: 8

Candidate Starts for Poenanya_13:

(Start: 8 @8532 has 139 MA's), (Start: 9 @8538 has 66 MA's), (14, 8640), (19, 8664), (21, 8670), (29, 8766), (Start: 30 @8790 has 1 MA's), (35, 8823), (39, 8877), (41, 8895), (43, 8904), (46, 8967), (49, 9045), (52, 9117), (58, 9465),

Gene: Polka14_13 Start: 8533, Stop: 9469, Start Num: 8

Candidate Starts for Polka14_13:

(Start: 8 @8533 has 139 MA's), (Start: 9 @8539 has 66 MA's), (14, 8641), (19, 8665), (21, 8671), (29, 8767), (Start: 30 @8791 has 1 MA's), (35, 8824), (37, 8860), (39, 8878), (41, 8896), (43, 8905), (46, 8968), (49, 9046), (52, 9118), (58, 9466),

Gene: Pollywog_14 Start: 8385, Stop: 9321, Start Num: 8

Candidate Starts for Pollywog_14:

(Start: 8 @8385 has 139 MA's), (Start: 9 @8391 has 66 MA's), (14, 8493), (21, 8523), (29, 8619), (Start: 30 @8643 has 1 MA's), (37, 8712), (39, 8730), (41, 8748), (42, 8751), (43, 8757), (44, 8772), (45, 8775), (46, 8820), (49, 8898), (52, 8970), (58, 9318),

Gene: PopTart_13 Start: 8577, Stop: 9513, Start Num: 9

Candidate Starts for PopTart_13:

(5, 8550), (Start: 9 @8577 has 66 MA's), (14, 8685), (21, 8715), (Start: 30 @8835 has 1 MA's), (35, 8868), (37, 8904), (39, 8922), (41, 8940), (42, 8943), (43, 8949), (44, 8964), (45, 8967), (46, 9012), (49, 9090), (50, 9096), (52, 9162), (56, 9309), (58, 9510),

Gene: Priscilla_13 Start: 8538, Stop: 9474, Start Num: 8

Candidate Starts for Priscilla_13:

(Start: 3 @8445 has 6 MA's), (Start: 8 @8538 has 139 MA's), (Start: 9 @8544 has 66 MA's), (14, 8646), (21, 8676), (29, 8772), (Start: 30 @8796 has 1 MA's), (32, 8799), (33, 8802), (37, 8865), (39,

8883), (41, 8901), (43, 8910), (46, 8973), (49, 9051), (52, 9123), (58, 9471),

Gene: QuickMath_13 Start: 8578, Stop: 9514, Start Num: 9

Candidate Starts for QuickMath_13:

(5, 8551), (Start: 9 @8578 has 66 MA's), (14, 8686), (21, 8716), (Start: 30 @8836 has 1 MA's), (35, 8869), (37, 8905), (39, 8923), (41, 8941), (42, 8944), (43, 8950), (44, 8965), (45, 8968), (46, 9013), (49, 9091), (50, 9097), (52, 9163), (56, 9310), (58, 9511),

Gene: Quico_14 Start: 8403, Stop: 9339, Start Num: 9

Candidate Starts for Quico_14:

(5, 8376), (Start: 9 @8403 has 66 MA's), (14, 8511), (21, 8541), (Start: 30 @8661 has 1 MA's), (32, 8664), (33, 8667), (35, 8694), (37, 8730), (41, 8766), (42, 8769), (43, 8775), (44, 8790), (45, 8793), (46, 8838), (49, 8916), (50, 8922), (52, 8988), (56, 9135), (58, 9336),

Gene: Radiance_13 Start: 8531, Stop: 9467, Start Num: 8

Candidate Starts for Radiance_13:

(Start: 8 @8531 has 139 MA's), (Start: 9 @8537 has 66 MA's), (14, 8639), (21, 8669), (29, 8765), (Start: 30 @8789 has 1 MA's), (37, 8858), (39, 8876), (41, 8894), (42, 8897), (43, 8903), (44, 8918), (45, 8921), (46, 8966), (49, 9044), (52, 9116), (58, 9464),

Gene: Ramsey_14 Start: 8388, Stop: 9324, Start Num: 8

Candidate Starts for Ramsey_14:

(Start: 3 @8295 has 6 MA's), (Start: 8 @8388 has 139 MA's), (Start: 9 @8394 has 66 MA's), (14, 8496), (19, 8520), (21, 8526), (29, 8622), (Start: 30 @8646 has 1 MA's), (32, 8649), (33, 8652), (35, 8679), (37, 8715), (39, 8733), (41, 8751), (43, 8760), (46, 8823), (49, 8901), (52, 8973), (58, 9321),

Gene: Raymond7_15 Start: 9081, Stop: 9987, Start Num: 10

Candidate Starts for Raymond7_15:

(Start: 10 @9081 has 41 MA's), (17, 9180), (18, 9189), (26, 9252), (29, 9300), (34, 9357), (39, 9420), (40, 9426), (41, 9438), (42, 9441), (47, 9528), (48, 9531), (51, 9633), (54, 9747), (57, 9804),

Gene: Rebel_15 Start: 9081, Stop: 9987, Start Num: 10

Candidate Starts for Rebel_15:

(Start: 10 @9081 has 41 MA's), (17, 9180), (18, 9189), (26, 9252), (29, 9300), (34, 9357), (39, 9420), (40, 9426), (41, 9438), (42, 9441), (47, 9528), (48, 9531), (51, 9633), (54, 9747), (57, 9804),

Gene: Redi_15 Start: 9081, Stop: 9987, Start Num: 10

Candidate Starts for Redi_15:

(Start: 10 @9081 has 41 MA's), (17, 9180), (18, 9189), (26, 9252), (29, 9300), (34, 9357), (39, 9420), (40, 9426), (41, 9438), (42, 9441), (47, 9528), (48, 9531), (51, 9633), (54, 9747), (57, 9804),

Gene: Renaud18_14 Start: 8852, Stop: 9794, Start Num: 8

Candidate Starts for Renaud18_14:

(Start: 8 @8852 has 139 MA's), (11, 8924), (15, 8969), (21, 8996), (24, 9014), (25, 9032), (38, 9200), (45, 9263), (46, 9308), (47, 9341), (50, 9392), (52, 9458),

Gene: Rialto_14 Start: 8391, Stop: 9327, Start Num: 8

Candidate Starts for Rialto_14:

(Start: 3 @8298 has 6 MA's), (Start: 8 @8391 has 139 MA's), (Start: 9 @8397 has 66 MA's), (14, 8499), (19, 8523), (21, 8529), (29, 8625), (Start: 30 @8649 has 1 MA's), (32, 8652), (33, 8655), (35, 8682), (37, 8718), (39, 8736), (41, 8754), (43, 8763), (46, 8826), (49, 8904), (50, 8910), (52, 8976), (56, 9123), (58, 9324),

Gene: Rita_13 Start: 8546, Stop: 9482, Start Num: 9

Candidate Starts for Rita_13:

(5, 8519), (Start: 9 @8546 has 66 MA's), (14, 8654), (19, 8678), (21, 8684), (Start: 30 @8804 has 1 MA's), (35, 8837), (37, 8873), (39, 8891), (41, 8909), (43, 8918), (44, 8933), (45, 8936), (46, 8981), (49, 9059), (50, 9065), (52, 9131), (56, 9278), (58, 9479),

Gene: RitaG_13 Start: 8532, Stop: 9441, Start Num: 8

Candidate Starts for RitaG_13:

(Start: 8 @8532 has 139 MA's), (Start: 9 @8538 has 66 MA's), (14, 8640), (21, 8670), (Start: 30 @8763 has 1 MA's), (37, 8832), (39, 8850), (41, 8868), (42, 8871), (43, 8877), (44, 8892), (45, 8895), (46, 8940), (49, 9018), (52, 9090), (58, 9438),

Gene: Rockne_13 Start: 8549, Stop: 9485, Start Num: 8

Candidate Starts for Rockne_13:

(Start: 8 @8549 has 139 MA's), (Start: 9 @8555 has 66 MA's), (14, 8657), (21, 8687), (29, 8783), (Start: 30 @8807 has 1 MA's), (37, 8876), (39, 8894), (41, 8912), (42, 8915), (43, 8921), (44, 8936), (45, 8939), (46, 8984), (49, 9062), (52, 9134), (58, 9482),

Gene: RockyHorror_14 Start: 8389, Stop: 9325, Start Num: 8

Candidate Starts for RockyHorror_14:

(Start: 3 @8296 has 6 MA's), (Start: 8 @8389 has 139 MA's), (Start: 9 @8395 has 66 MA's), (14, 8497), (19, 8521), (21, 8527), (29, 8623), (Start: 30 @8647 has 1 MA's), (32, 8650), (33, 8653), (35, 8680), (37, 8716), (39, 8734), (41, 8752), (43, 8761), (46, 8824), (49, 8902), (52, 8974), (58, 9322),

Gene: Royals2015_13 Start: 8576, Stop: 9512, Start Num: 9

Candidate Starts for Royals2015_13:

(5, 8549), (Start: 9 @8576 has 66 MA's), (14, 8684), (21, 8714), (Start: 30 @8834 has 1 MA's), (35, 8867), (37, 8903), (39, 8921), (41, 8939), (42, 8942), (43, 8948), (44, 8963), (45, 8966), (46, 9011), (49, 9089), (50, 9095), (52, 9161), (56, 9308), (58, 9509),

Gene: Rubeelu_15 Start: 9056, Stop: 9962, Start Num: 10

Candidate Starts for Rubeelu_15:

(Start: 10 @9056 has 41 MA's), (18, 9164), (26, 9227), (29, 9275), (34, 9332), (39, 9395), (40, 9401), (42, 9416), (48, 9506), (50, 9554), (54, 9722), (57, 9779),

Gene: Ruby_13 Start: 8449, Stop: 9478, Start Num: 3

Candidate Starts for Ruby_13:

(Start: 3 @8449 has 6 MA's), (Start: 8 @8542 has 139 MA's), (Start: 9 @8548 has 66 MA's), (14, 8650), (21, 8680), (29, 8776), (Start: 30 @8800 has 1 MA's), (32, 8803), (33, 8806), (37, 8869), (39, 8887), (41, 8905), (42, 8908), (43, 8914), (46, 8977), (49, 9055), (50, 9061), (52, 9127), (58, 9475),

Gene: Ryadel_57 Start: 26800, Stop: 27751, Start Num: 6

Candidate Starts for Ryadel_57:

(Start: 6 @26800 has 14 MA's), (Start: 7 @26812 has 3 MA's), (11, 26884), (15, 26929), (16, 26932), (21, 26956), (24, 26974), (26, 27004), (31, 27082), (32, 27085), (36, 27142), (39, 27166), (46, 27241), (52, 27391), (53, 27487),

Gene: SG4_13 Start: 8576, Stop: 9512, Start Num: 9

Candidate Starts for SG4_13:

(5, 8549), (Start: 9 @8576 has 66 MA's), (14, 8684), (21, 8714), (Start: 30 @8834 has 1 MA's), (35, 8867), (37, 8903), (39, 8921), (41, 8939), (42, 8942), (43, 8948), (44, 8963), (45, 8966), (46, 9011), (49, 9089), (50, 9095), (52, 9161), (56, 9308), (58, 9509),

Gene: Saal_13 Start: 8521, Stop: 9457, Start Num: 8

Candidate Starts for Saal_13:

(Start: 8 @8521 has 139 MA's), (Start: 9 @8527 has 66 MA's), (14, 8629), (21, 8659), (29, 8755), (Start: 30 @8779 has 1 MA's), (37, 8848), (39, 8866), (41, 8884), (42, 8887), (43, 8893), (44, 8908), (45, 8911), (46, 8956), (49, 9034), (52, 9106), (58, 9454),

Gene: Sabbb_13 Start: 8550, Stop: 9486, Start Num: 8

Candidate Starts for Sabbb_13:

(Start: 8 @8550 has 139 MA's), (Start: 9 @8556 has 66 MA's), (14, 8658), (19, 8682), (21, 8688), (29, 8784), (Start: 30 @8808 has 1 MA's), (35, 8841), (39, 8895), (41, 8913), (43, 8922), (46, 8985), (49, 9063), (52, 9135), (58, 9483),

Gene: Sandalphon_13 Start: 8549, Stop: 9485, Start Num: 8

Candidate Starts for Sandalphon_13:

(Start: 8 @8549 has 139 MA's), (Start: 9 @8555 has 66 MA's), (14, 8657), (19, 8681), (21, 8687), (29, 8783), (Start: 30 @8807 has 1 MA's), (32, 8810), (33, 8813), (39, 8894), (42, 8915), (43, 8921), (46, 8984), (49, 9062), (52, 9134), (58, 9482),

Gene: Sarma624_14 Start: 8383, Stop: 9319, Start Num: 8

Candidate Starts for Sarma624_14:

(Start: 8 @8383 has 139 MA's), (Start: 9 @8389 has 66 MA's), (14, 8491), (21, 8521), (29, 8617), (Start: 30 @8641 has 1 MA's), (37, 8710), (39, 8728), (41, 8746), (42, 8749), (43, 8755), (44, 8770), (45, 8773), (46, 8818), (49, 8896), (52, 8968), (58, 9316),

Gene: Sassafras_13 Start: 8532, Stop: 9468, Start Num: 8

Candidate Starts for Sassafras_13:

(Start: 8 @8532 has 139 MA's), (Start: 9 @8538 has 66 MA's), (14, 8640), (21, 8670), (29, 8766), (Start: 30 @8790 has 1 MA's), (37, 8859), (39, 8877), (41, 8895), (42, 8898), (43, 8904), (44, 8919), (45, 8922), (46, 8967), (49, 9045), (52, 9117), (58, 9465),

Gene: SassyB_13 Start: 8577, Stop: 9513, Start Num: 9

Candidate Starts for SassyB_13:

(5, 8550), (Start: 9 @8577 has 66 MA's), (14, 8685), (21, 8715), (Start: 30 @8835 has 1 MA's), (35, 8868), (37, 8904), (39, 8922), (41, 8940), (42, 8943), (43, 8949), (44, 8964), (45, 8967), (46, 9012), (49, 9090), (50, 9096), (52, 9162), (56, 9309), (58, 9510),

Gene: Schnauzer_15 Start: 9036, Stop: 9942, Start Num: 10

Candidate Starts for Schnauzer_15:

(Start: 10 @9036 has 41 MA's), (18, 9144), (26, 9207), (34, 9312), (39, 9375), (40, 9381), (41, 9393), (42, 9396), (48, 9486), (51, 9588), (54, 9702), (57, 9759),

Gene: SchoolBus_53 Start: 25762, Stop: 26701, Start Num: 7

Candidate Starts for SchoolBus_53:

(Start: 6 @25750 has 14 MA's), (Start: 7 @25762 has 3 MA's), (11, 25834), (15, 25879), (16, 25882), (21, 25906), (24, 25924), (26, 25954), (31, 26032), (32, 26035), (36, 26092), (39, 26116), (46, 26191), (50, 26275), (52, 26341), (53, 26437),

Gene: Scottish_13 Start: 8538, Stop: 9468, Start Num: 9

Candidate Starts for Scottish_13:

(Start: 8 @8532 has 139 MA's), (Start: 9 @8538 has 66 MA's), (14, 8640), (21, 8670), (29, 8766), (Start: 30 @8790 has 1 MA's), (37, 8859), (39, 8877), (41, 8895), (42, 8898), (43, 8904), (44, 8919), (45, 8922), (46, 8967), (49, 9045), (52, 9117), (58, 9465),

Gene: Seabastian_13 Start: 8535, Stop: 9471, Start Num: 8

Candidate Starts for Seabastian_13:

(Start: 3 @8442 has 6 MA's), (Start: 8 @8535 has 139 MA's), (Start: 9 @8541 has 66 MA's), (14, 8643), (21, 8673), (29, 8769), (Start: 30 @8793 has 1 MA's), (32, 8796), (33, 8799), (35, 8826), (37, 8862), (39, 8880), (41, 8898), (43, 8907), (46, 8970), (49, 9048), (52, 9120), (58, 9468),

Gene: Seagreen_14 Start: 8392, Stop: 9328, Start Num: 8

Candidate Starts for Seagreen_14:

(Start: 8 @8392 has 139 MA's), (Start: 9 @8398 has 66 MA's), (14, 8500), (19, 8524), (21, 8530), (29, 8626), (Start: 30 @8650 has 1 MA's), (35, 8683), (39, 8737), (41, 8755), (43, 8764), (46, 8827), (49, 8905), (52, 8977), (58, 9325),

Gene: Shauna1_12 Start: 8578, Stop: 9514, Start Num: 9

Candidate Starts for Shauna1_12:

(5, 8551), (Start: 9 @8578 has 66 MA's), (14, 8686), (21, 8716), (Start: 30 @8836 has 1 MA's), (32, 8839), (33, 8842), (35, 8869), (37, 8905), (39, 8923), (41, 8941), (43, 8950), (44, 8965), (45, 8968), (46, 9013), (49, 9091), (50, 9097), (52, 9163), (56, 9310), (58, 9511),

Gene: ShiLan_13 Start: 8444, Stop: 9473, Start Num: 3

Candidate Starts for ShiLan_13:

(Start: 3 @8444 has 6 MA's), (Start: 8 @8537 has 139 MA's), (Start: 9 @8543 has 66 MA's), (14, 8645), (21, 8675), (29, 8771), (Start: 30 @8795 has 1 MA's), (32, 8798), (33, 8801), (37, 8864), (39, 8882), (41, 8900), (43, 8909), (46, 8972), (49, 9050), (52, 9122), (58, 9470),

Gene: Shida_53 Start: 25590, Stop: 26541, Start Num: 6

Candidate Starts for Shida_53:

(Start: 6 @25590 has 14 MA's), (Start: 7 @25602 has 3 MA's), (11, 25674), (15, 25719), (16, 25722), (21, 25746), (24, 25764), (26, 25794), (31, 25872), (32, 25875), (36, 25932), (39, 25956), (46, 26031), (50, 26115), (52, 26181), (53, 26277),

Gene: ShowerHandel_13 Start: 8538, Stop: 9474, Start Num: 8

Candidate Starts for ShowerHandel_13:

(Start: 3 @8445 has 6 MA's), (Start: 8 @8538 has 139 MA's), (Start: 9 @8544 has 66 MA's), (14, 8646), (21, 8676), (29, 8772), (Start: 30 @8796 has 1 MA's), (32, 8799), (33, 8802), (37, 8865), (39, 8883), (41, 8901), (43, 8910), (46, 8973), (49, 9051), (52, 9123), (58, 9471),

Gene: ShrimpFriedEgg_15 Start: 9081, Stop: 9987, Start Num: 10

Candidate Starts for ShrimpFriedEgg_15:

(Start: 10 @9081 has 41 MA's), (17, 9180), (18, 9189), (26, 9252), (29, 9300), (34, 9357), (39, 9420), (40, 9426), (41, 9438), (42, 9441), (47, 9528), (48, 9531), (51, 9633), (54, 9747), (57, 9804),

Gene: ShroomBoi_13 Start: 8579, Stop: 9515, Start Num: 9

Candidate Starts for ShroomBoi_13:

(5, 8552), (Start: 9 @8579 has 66 MA's), (14, 8687), (21, 8717), (Start: 30 @8837 has 1 MA's), (35, 8870), (37, 8906), (39, 8924), (41, 8942), (43, 8951), (44, 8966), (45, 8969), (46, 9014), (49, 9092), (50, 9098), (52, 9164), (56, 9311), (58, 9512),

Gene: Shweta_15 Start: 9081, Stop: 9987, Start Num: 10

Candidate Starts for Shweta_15:

(Start: 10 @9081 has 41 MA's), (17, 9180), (18, 9189), (26, 9252), (29, 9300), (34, 9357), (39, 9420), (40, 9426), (41, 9438), (42, 9441), (47, 9528), (48, 9531), (51, 9633), (54, 9747), (57, 9804),

Gene: SiSi_13 Start: 8565, Stop: 9501, Start Num: 9

Candidate Starts for SiSi_13:

(5, 8538), (Start: 9 @8565 has 66 MA's), (14, 8673), (21, 8703), (Start: 30 @8823 has 1 MA's), (32, 8826), (33, 8829), (35, 8856), (37, 8892), (39, 8910), (41, 8928), (42, 8931), (43, 8937), (44, 8952), (45, 8955), (46, 9000), (49, 9078), (50, 9084), (52, 9150), (56, 9297), (58, 9498),

Gene: Silvafighter_15 Start: 9036, Stop: 9942, Start Num: 10

Candidate Starts for Silvafighter_15:

(Start: 10 @9036 has 41 MA's), (18, 9144), (26, 9207), (34, 9312), (39, 9375), (40, 9381), (41, 9393), (42, 9396), (48, 9486), (51, 9588), (54, 9702), (57, 9759),

Gene: Silvy_15 Start: 9037, Stop: 9943, Start Num: 10

Candidate Starts for Silvy_15:

(Start: 10 @9037 has 41 MA's), (18, 9145), (26, 9208), (29, 9256), (34, 9313), (39, 9376), (40, 9382), (41, 9394), (42, 9397), (48, 9487), (51, 9589), (54, 9703), (57, 9760),

Gene: SimranZ1_13 Start: 8388, Stop: 9324, Start Num: 8

Candidate Starts for SimranZ1_13:

(Start: 3 @8295 has 6 MA's), (Start: 8 @8388 has 139 MA's), (Start: 9 @8394 has 66 MA's), (14, 8496), (21, 8526), (29, 8622), (Start: 30 @8646 has 1 MA's), (35, 8679), (37, 8715), (39, 8733), (41, 8751), (43, 8760), (46, 8823), (49, 8901), (52, 8973), (58, 9321),

Gene: SkinnyPete_15 Start: 9081, Stop: 9987, Start Num: 10

Candidate Starts for SkinnyPete_15:

(Start: 10 @9081 has 41 MA's), (18, 9189), (26, 9252), (29, 9300), (34, 9357), (39, 9420), (40, 9426), (41, 9438), (42, 9441), (47, 9528), (48, 9531), (51, 9633), (54, 9747), (57, 9804),

Gene: Smooch_55 Start: 26890, Stop: 27829, Start Num: 7

Candidate Starts for Smooch_55:

(Start: 6 @26878 has 14 MA's), (Start: 7 @26890 has 3 MA's), (11, 26962), (15, 27007), (16, 27010), (21, 27034), (24, 27052), (26, 27082), (31, 27160), (32, 27163), (36, 27220), (39, 27244), (46, 27319), (50, 27403), (52, 27469), (53, 27565),

Gene: Smurph_15 Start: 9036, Stop: 9942, Start Num: 10

Candidate Starts for Smurph_15:

(Start: 10 @9036 has 41 MA's), (18, 9144), (26, 9207), (34, 9312), (39, 9375), (40, 9381), (41, 9393), (42, 9396), (48, 9486), (51, 9588), (54, 9702), (57, 9759),

Gene: Snekmaggedon_15 Start: 9081, Stop: 9987, Start Num: 10

Candidate Starts for Snekmaggedon_15:

(Start: 10 @9081 has 41 MA's), (17, 9180), (18, 9189), (26, 9252), (29, 9300), (34, 9357), (39, 9420), (40, 9426), (41, 9438), (42, 9441), (47, 9528), (48, 9531), (51, 9633), (54, 9747), (57, 9804),

Gene: Sparkdehlily_13 Start: 8561, Stop: 9497, Start Num: 8

Candidate Starts for Sparkdehlily_13:

(Start: 8 @8561 has 139 MA's), (Start: 9 @8567 has 66 MA's), (14, 8669), (21, 8699), (Start: 30 @8819 has 1 MA's), (37, 8888), (39, 8906), (41, 8924), (43, 8933), (44, 8948), (45, 8951), (46, 8996), (49, 9074), (52, 9146), (58, 9494),

Gene: Spartacus_13 Start: 8563, Stop: 9499, Start Num: 9

Candidate Starts for Spartacus_13:

(5, 8536), (Start: 9 @8563 has 66 MA's), (14, 8671), (21, 8701), (Start: 30 @8821 has 1 MA's), (35, 8854), (37, 8890), (39, 8908), (41, 8926), (43, 8935), (46, 8998), (49, 9076), (52, 9148), (58, 9496),

Gene: Spikelee_14 Start: 8390, Stop: 9326, Start Num: 8

Candidate Starts for Spikelee_14:

(2, 8291), (Start: 8 @8390 has 139 MA's), (Start: 9 @8396 has 66 MA's), (14, 8498), (21, 8528), (Start: 30 @8648 has 1 MA's), (32, 8651), (33, 8654), (35, 8681), (37, 8717), (39, 8735), (41, 8753), (43, 8762), (46, 8825), (49, 8903), (52, 8975), (58, 9323),

Gene: SpongeBob_15 Start: 9081, Stop: 9987, Start Num: 10

Candidate Starts for SpongeBob_15:

(Start: 10 @9081 has 41 MA's), (17, 9180), (18, 9189), (26, 9252), (29, 9300), (34, 9357), (39, 9420), (40, 9426), (41, 9438), (42, 9441), (47, 9528), (48, 9531), (51, 9633), (54, 9747), (57, 9804),

Gene: Spoonbill_13 Start: 8538, Stop: 9474, Start Num: 8

Candidate Starts for Spoonbill_13:

(Start: 3 @8445 has 6 MA's), (Start: 8 @8538 has 139 MA's), (Start: 9 @8544 has 66 MA's), (14, 8646), (21, 8676), (29, 8772), (Start: 30 @8796 has 1 MA's), (32, 8799), (33, 8802), (37, 8865), (39, 8883), (41, 8901), (42, 8904), (43, 8910), (46, 8973), (49, 9051), (52, 9123), (58, 9471),

Gene: Squirty_14 Start: 8390, Stop: 9326, Start Num: 8

Candidate Starts for Squirty_14:

(Start: 8 @8390 has 139 MA's), (Start: 9 @8396 has 66 MA's), (19, 8522), (21, 8528), (29, 8624), (Start: 30 @8648 has 1 MA's), (35, 8681), (37, 8717), (39, 8735), (41, 8753), (42, 8756), (43, 8762), (44, 8777), (45, 8780), (46, 8825), (49, 8903), (50, 8909), (52, 8975), (58, 9323),

Gene: StAnnes_13 Start: 8579, Stop: 9515, Start Num: 9

Candidate Starts for StAnnes_13:

(5, 8552), (Start: 9 @8579 has 66 MA's), (14, 8687), (21, 8717), (Start: 30 @8837 has 1 MA's), (35, 8870), (37, 8906), (39, 8924), (41, 8942), (42, 8945), (43, 8951), (44, 8966), (45, 8969), (46, 9014), (49, 9092), (50, 9098), (52, 9164), (58, 9512),

Gene: Stap_14 Start: 8389, Stop: 9325, Start Num: 8

Candidate Starts for Stap_14:

(Start: 3 @8296 has 6 MA's), (Start: 8 @8389 has 139 MA's), (Start: 9 @8395 has 66 MA's), (14, 8497), (19, 8521), (21, 8527), (29, 8623), (Start: 30 @8647 has 1 MA's), (32, 8650), (33, 8653), (35, 8680), (37, 8716), (39, 8734), (41, 8752), (43, 8761), (46, 8824), (49, 8902), (52, 8974), (58, 9322),

Gene: Starcevich_14 Start: 8388, Stop: 9324, Start Num: 8

Candidate Starts for Starcevich_14:

(Start: 8 @8388 has 139 MA's), (Start: 9 @8394 has 66 MA's), (14, 8496), (21, 8526), (29, 8622), (Start: 30 @8646 has 1 MA's), (37, 8715), (39, 8733), (41, 8751), (42, 8754), (43, 8760), (44, 8775), (45, 8778), (46, 8823), (49, 8901), (52, 8973), (56, 9120), (58, 9321),

Gene: Strokeseat_13 Start: 8534, Stop: 9470, Start Num: 8

Candidate Starts for Strokeseat_13:

(Start: 8 @8534 has 139 MA's), (Start: 9 @8540 has 66 MA's), (14, 8642), (21, 8672), (29, 8768), (Start: 30 @8792 has 1 MA's), (37, 8861), (39, 8879), (41, 8897), (42, 8900), (43, 8906), (44, 8921), (45, 8924), (46, 8969), (49, 9047), (52, 9119), (58, 9467),

Gene: SuperGrey_13 Start: 8545, Stop: 9481, Start Num: 9

Candidate Starts for SuperGrey_13:

(5, 8518), (Start: 9 @8545 has 66 MA's), (14, 8653), (19, 8677), (21, 8683), (Start: 30 @8803 has 1 MA's), (35, 8836), (37, 8872), (39, 8890), (41, 8908), (43, 8917), (44, 8932), (45, 8935), (46, 8980), (49, 9058), (50, 9064), (52, 9130), (56, 9277), (58, 9478),

Gene: SwagPiggett_13 Start: 8538, Stop: 9474, Start Num: 8

Candidate Starts for SwagPiggett_13:

(Start: 3 @8445 has 6 MA's), (Start: 8 @8538 has 139 MA's), (Start: 9 @8544 has 66 MA's), (14, 8646), (21, 8676), (29, 8772), (Start: 30 @8796 has 1 MA's), (32, 8799), (33, 8802), (37, 8865), (39, 8883), (41, 8901), (43, 8910), (46, 8973), (49, 9051), (52, 9123), (58, 9471),

Gene: TChen_14 Start: 8979, Stop: 9921, Start Num: 8

Candidate Starts for TChen_14:

(Start: 8 @8979 has 139 MA's), (11, 9051), (12, 9072), (13, 9075), (15, 9096), (21, 9123), (25, 9159), (35, 9276), (38, 9327), (46, 9435), (47, 9468), (49, 9513), (50, 9519), (52, 9585),

Gene: TDanisky_13 Start: 8561, Stop: 9497, Start Num: 8

Candidate Starts for TDanisky_13:

(Start: 8 @8561 has 139 MA's), (Start: 9 @8567 has 66 MA's), (14, 8669), (21, 8699), (Start: 30 @8819 has 1 MA's), (37, 8888), (39, 8906), (41, 8924), (43, 8933), (44, 8948), (45, 8951), (46, 8996), (49, 9074), (52, 9146), (58, 9494),

Gene: Taj_13 Start: 8577, Stop: 9513, Start Num: 9

Candidate Starts for Taj_13:

(5, 8550), (Start: 9 @8577 has 66 MA's), (14, 8685), (21, 8715), (Start: 30 @8835 has 1 MA's), (35, 8868), (37, 8904), (39, 8922), (41, 8940), (42, 8943), (43, 8949), (44, 8964), (45, 8967), (46, 9012), (49, 9090), (50, 9096), (52, 9162), (56, 9309), (58, 9510),

Gene: Tapioca_15 Start: 9036, Stop: 9942, Start Num: 10

Candidate Starts for Tapioca_15:

(Start: 10 @9036 has 41 MA's), (18, 9144), (26, 9207), (29, 9255), (34, 9312), (39, 9375), (40, 9381), (41, 9393), (42, 9396), (48, 9486), (51, 9588), (54, 9702), (57, 9759),

Gene: TelAviv_50 Start: 25744, Stop: 26695, Start Num: 6

Candidate Starts for TelAviv_50:

(Start: 6 @25744 has 14 MA's), (Start: 7 @25756 has 3 MA's), (11, 25828), (15, 25873), (16, 25876), (21, 25900), (24, 25918), (26, 25948), (31, 26026), (32, 26029), (36, 26086), (39, 26110), (46, 26185), (50, 26269), (52, 26335), (53, 26431),

Gene: ThetaBob_14 Start: 8862, Stop: 9804, Start Num: 8

Candidate Starts for ThetaBob_14:

(Start: 8 @8862 has 139 MA's), (11, 8934), (12, 8955), (13, 8958), (15, 8979), (21, 9006), (25, 9042), (35, 9159), (38, 9210), (46, 9318), (47, 9351), (49, 9396), (50, 9402), (52, 9468),

Gene: TootsiePop_14 Start: 8399, Stop: 9335, Start Num: 8

Candidate Starts for TootsiePop_14:

(Start: 8 @8399 has 139 MA's), (Start: 9 @8405 has 66 MA's), (14, 8507), (19, 8531), (21, 8537), (Start: 30 @8657 has 1 MA's), (35, 8690), (37, 8726), (39, 8744), (41, 8762), (42, 8765), (43, 8771), (44, 8786), (45, 8789), (46, 8834), (49, 8912), (52, 8984), (56, 9131), (58, 9332),

Gene: Tootsieroll_14 Start: 8389, Stop: 9325, Start Num: 8

Candidate Starts for Tootsieroll_14:

(Start: 3 @8296 has 6 MA's), (Start: 8 @8389 has 139 MA's), (Start: 9 @8395 has 66 MA's), (14, 8497), (19, 8521), (21, 8527), (29, 8623), (Start: 30 @8647 has 1 MA's), (32, 8650), (33, 8653), (35, 8680), (37, 8716), (39, 8734), (41, 8752), (43, 8761), (46, 8824), (49, 8902), (52, 8974), (58, 9322),

Gene: Totinger_14 Start: 8386, Stop: 9322, Start Num: 8

Candidate Starts for Totinger_14:

(Start: 8 @8386 has 139 MA's), (Start: 9 @8392 has 66 MA's), (14, 8494), (21, 8524), (29, 8620), (Start: 30 @8644 has 1 MA's), (37, 8713), (39, 8731), (41, 8749), (42, 8752), (43, 8758), (44, 8773), (45, 8776), (46, 8821), (49, 8899), (52, 8971), (56, 9118), (58, 9319),

Gene: Tweety_12 Start: 8579, Stop: 9515, Start Num: 9

Candidate Starts for Tweety_12:

(5, 8552), (Start: 9 @8579 has 66 MA's), (14, 8687), (21, 8717), (Start: 30 @8837 has 1 MA's), (35, 8870), (37, 8906), (39, 8924), (41, 8942), (42, 8945), (43, 8951), (44, 8966), (45, 8969), (46, 9014), (49, 9092), (50, 9098), (52, 9164), (56, 9311), (58, 9512),

Gene: UncleRicky_14 Start: 8390, Stop: 9326, Start Num: 8

Candidate Starts for UncleRicky_14:

(Start: 3 @8297 has 6 MA's), (Start: 8 @8390 has 139 MA's), (Start: 9 @8396 has 66 MA's), (14, 8498), (21, 8528), (Start: 30 @8648 has 1 MA's), (37, 8717), (39, 8735), (41, 8753), (43, 8762), (46, 8825), (49, 8903), (50, 8909), (52, 8975), (58, 9323),

Gene: VRedHorse_13 Start: 8534, Stop: 9470, Start Num: 8

Candidate Starts for VRedHorse_13:

(Start: 8 @8534 has 139 MA's), (Start: 9 @8540 has 66 MA's), (14, 8642), (21, 8672), (29, 8768), (Start: 30 @8792 has 1 MA's), (37, 8861), (39, 8879), (41, 8897), (42, 8900), (43, 8906), (44, 8921), (45, 8924), (46, 8969), (49, 9047), (52, 9119), (58, 9467),

Gene: Velveteen_14 Start: 8383, Stop: 9319, Start Num: 8

Candidate Starts for Velveteen_14:

(Start: 8 @8383 has 139 MA's), (Start: 9 @8389 has 66 MA's), (14, 8491), (21, 8521), (29, 8617), (Start: 30 @8641 has 1 MA's), (37, 8710), (39, 8728), (41, 8746), (42, 8749), (43, 8755), (44, 8770), (45, 8773), (46, 8818), (49, 8896), (52, 8968), (58, 9316),

Gene: Veteran_13 Start: 8572, Stop: 9508, Start Num: 9

Candidate Starts for Veteran_13:

(5, 8545), (Start: 9 @8572 has 66 MA's), (14, 8680), (21, 8710), (Start: 30 @8830 has 1 MA's), (35, 8863), (37, 8899), (39, 8917), (41, 8935), (42, 8938), (43, 8944), (44, 8959), (45, 8962), (46, 9007), (49, 9085), (50, 9091), (52, 9157), (56, 9304), (58, 9505),

Gene: Vorrps_51 Start: 25336, Stop: 26287, Start Num: 6

Candidate Starts for Vorrps_51:

(Start: 6 @25336 has 14 MA's), (Start: 7 @25348 has 3 MA's), (11, 25420), (15, 25465), (16, 25468), (21, 25492), (24, 25510), (26, 25540), (31, 25618), (32, 25621), (36, 25678), (39, 25702), (46, 25777), (50, 25861), (52, 25927), (53, 26023),

Gene: Wachhund_13 Start: 8532, Stop: 9468, Start Num: 8

Candidate Starts for Wachhund_13:

(Start: 8 @8532 has 139 MA's), (Start: 9 @8538 has 66 MA's), (14, 8640), (21, 8670), (Start: 30 @8790 has 1 MA's), (35, 8823), (39, 8877), (41, 8895), (43, 8904), (46, 8967), (49, 9045), (50, 9051), (52, 9117), (56, 9264), (58, 9465),

Gene: Wee_12 Start: 8576, Stop: 9512, Start Num: 9

Candidate Starts for Wee_12:

(5, 8549), (Start: 9 @8576 has 66 MA's), (14, 8684), (21, 8714), (Start: 30 @8834 has 1 MA's), (35, 8867), (37, 8903), (39, 8921), (41, 8939), (42, 8942), (43, 8948), (44, 8963), (45, 8966), (46, 9011), (49, 9089), (50, 9095), (52, 9161), (56, 9308), (58, 9509),

Gene: Whatsapiecost_13 Start: 8577, Stop: 9513, Start Num: 9

Candidate Starts for Whatsapiecost_13:

(5, 8550), (Start: 9 @8577 has 66 MA's), (14, 8685), (21, 8715), (Start: 30 @8835 has 1 MA's), (35, 8868), (37, 8904), (39, 8922), (41, 8940), (42, 8943), (43, 8949), (44, 8964), (45, 8967), (46, 9012), (49, 9090), (50, 9096), (52, 9162), (56, 9309), (58, 9510),

Gene: Whouxphf_13 Start: 8526, Stop: 9462, Start Num: 8

Candidate Starts for Whouxphf_13:

(Start: 8 @8526 has 139 MA's), (Start: 9 @8532 has 66 MA's), (14, 8634), (21, 8664), (Start: 30 @8784 has 1 MA's), (32, 8787), (33, 8790), (35, 8817), (37, 8853), (39, 8871), (41, 8889), (43, 8898), (44, 8913), (45, 8916), (46, 8961), (49, 9039), (50, 9045), (52, 9111), (56, 9258), (58, 9459),

Gene: WillSterrel_13 Start: 8563, Stop: 9499, Start Num: 9

Candidate Starts for WillSterrel_13:

(5, 8536), (Start: 9 @8563 has 66 MA's), (14, 8671), (21, 8701), (Start: 30 @8821 has 1 MA's), (35, 8854), (37, 8890), (39, 8908), (41, 8926), (43, 8935), (46, 8998), (49, 9076), (52, 9148), (58, 9496),

Gene: Winget_54 Start: 26016, Stop: 26967, Start Num: 6

Candidate Starts for Winget_54:

(Start: 6 @26016 has 14 MA's), (Start: 7 @26028 has 3 MA's), (11, 26100), (15, 26145), (16, 26148), (21, 26172), (24, 26190), (26, 26220), (31, 26298), (32, 26301), (36, 26358), (39, 26382), (46, 26457), (50, 26541), (52, 26607), (53, 26703),

Gene: XFactor_13 Start: 8577, Stop: 9513, Start Num: 9

Candidate Starts for XFactor_13:

(5, 8550), (Start: 9 @8577 has 66 MA's), (14, 8685), (21, 8715), (Start: 30 @8835 has 1 MA's), (35, 8868), (37, 8904), (39, 8922), (41, 8940), (43, 8949), (44, 8964), (45, 8967), (46, 9012), (49, 9090), (50, 9096), (52, 9162), (56, 9309), (58, 9510),

Gene: Xeno_15 Start: 9036, Stop: 9942, Start Num: 10

Candidate Starts for Xeno_15:

(Start: 10 @9036 has 41 MA's), (18, 9144), (26, 9207), (29, 9255), (34, 9312), (39, 9375), (40, 9381), (41, 9393), (42, 9396), (48, 9486), (51, 9588), (54, 9702), (57, 9759),

Gene: Xerxes_15 Start: 9036, Stop: 9942, Start Num: 10

Candidate Starts for Xerxes_15:

(Start: 10 @9036 has 41 MA's), (18, 9144), (26, 9207), (34, 9312), (39, 9375), (40, 9381), (41, 9393), (42, 9396), (48, 9486), (51, 9588), (54, 9702), (57, 9759),

Gene: Yorick_13 Start: 8536, Stop: 9472, Start Num: 8

Candidate Starts for Yorick_13:

(Start: 3 @8443 has 6 MA's), (Start: 8 @8536 has 139 MA's), (Start: 9 @8542 has 66 MA's), (14, 8644), (21, 8674), (29, 8770), (Start: 30 @8794 has 1 MA's), (32, 8797), (33, 8800), (37, 8863), (39, 8881), (41, 8899), (43, 8908), (46, 8971), (49, 9049), (52, 9121), (58, 9469),

Gene: YungJamal_56 Start: 26055, Stop: 27006, Start Num: 6

Candidate Starts for YungJamal_56:

(Start: 6 @26055 has 14 MA's), (Start: 7 @26067 has 3 MA's), (11, 26139), (15, 26184), (16, 26187), (21, 26211), (24, 26229), (26, 26259), (31, 26337), (32, 26340), (36, 26397), (39, 26421), (46, 26496), (50, 26580), (52, 26646), (53, 26742),

Gene: Zakhe101_53 Start: 25875, Stop: 26826, Start Num: 6

Candidate Starts for Zakhe101_53:

(Start: 6 @25875 has 14 MA's), (Start: 7 @25887 has 3 MA's), (11, 25959), (15, 26004), (16, 26007), (21, 26031), (24, 26049), (26, 26079), (31, 26157), (32, 26160), (36, 26217), (39, 26241), (46, 26316), (50, 26400), (52, 26466), (53, 26562),

Gene: Zerg_13 Start: 8538, Stop: 9474, Start Num: 8

Candidate Starts for Zerg_13:

(4, 8451), (Start: 8 @8538 has 139 MA's), (Start: 9 @8544 has 66 MA's), (14, 8646), (19, 8670), (21, 8676), (29, 8772), (Start: 30 @8796 has 1 MA's), (37, 8865), (39, 8883), (41, 8901), (43, 8910), (44, 8925), (45, 8928), (46, 8973), (49, 9051), (52, 9123), (58, 9471),

Gene: Zizzle_13 Start: 8540, Stop: 9476, Start Num: 8

Candidate Starts for Zizzle_13:

(Start: 3 @8447 has 6 MA's), (Start: 8 @8540 has 139 MA's), (Start: 9 @8546 has 66 MA's), (14, 8648), (21, 8678), (29, 8774), (Start: 30 @8798 has 1 MA's), (32, 8801), (33, 8804), (37, 8867), (39, 8885), (41, 8903), (43, 8912), (46, 8975), (49, 9053), (52, 9125), (58, 9473),