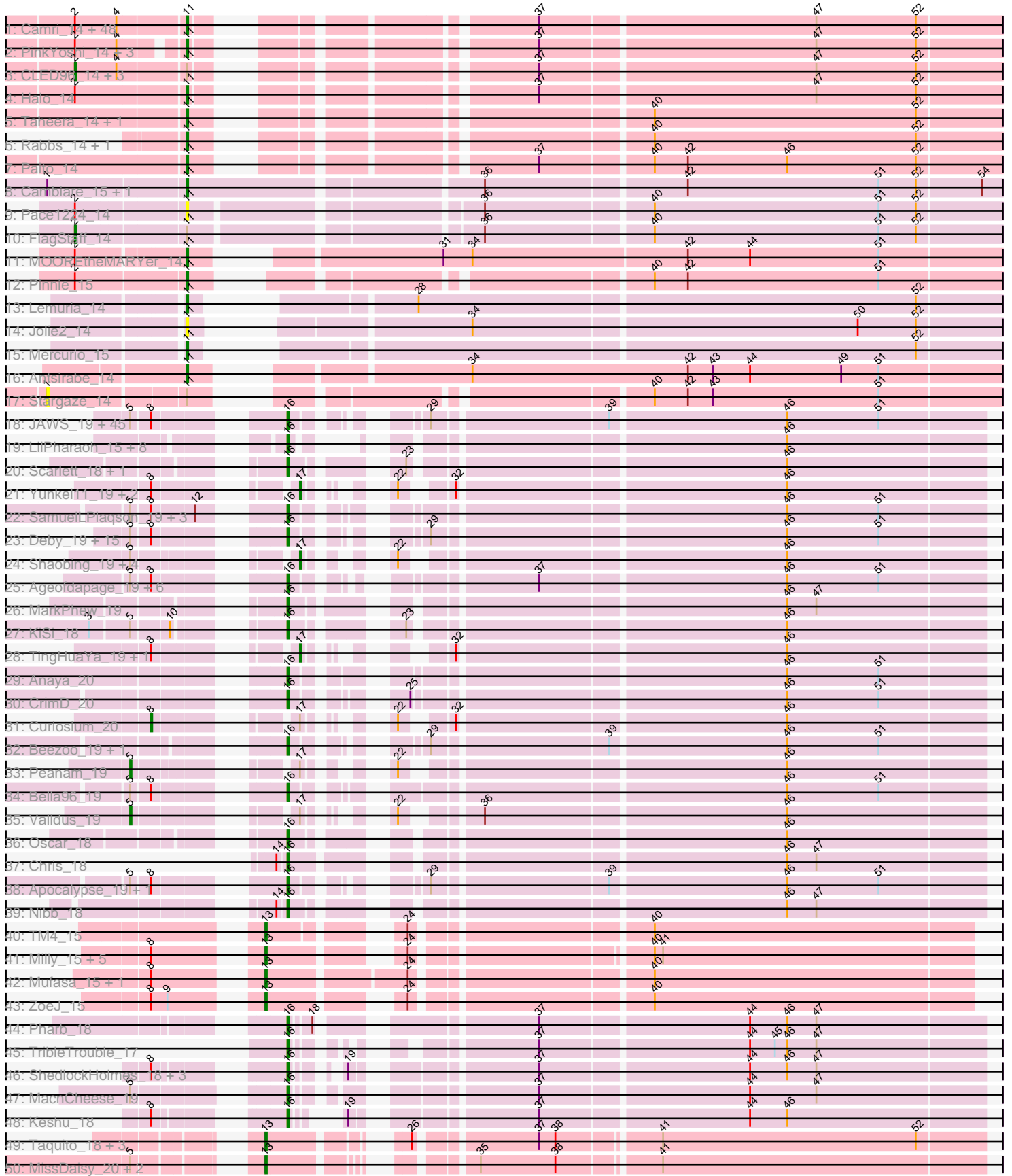
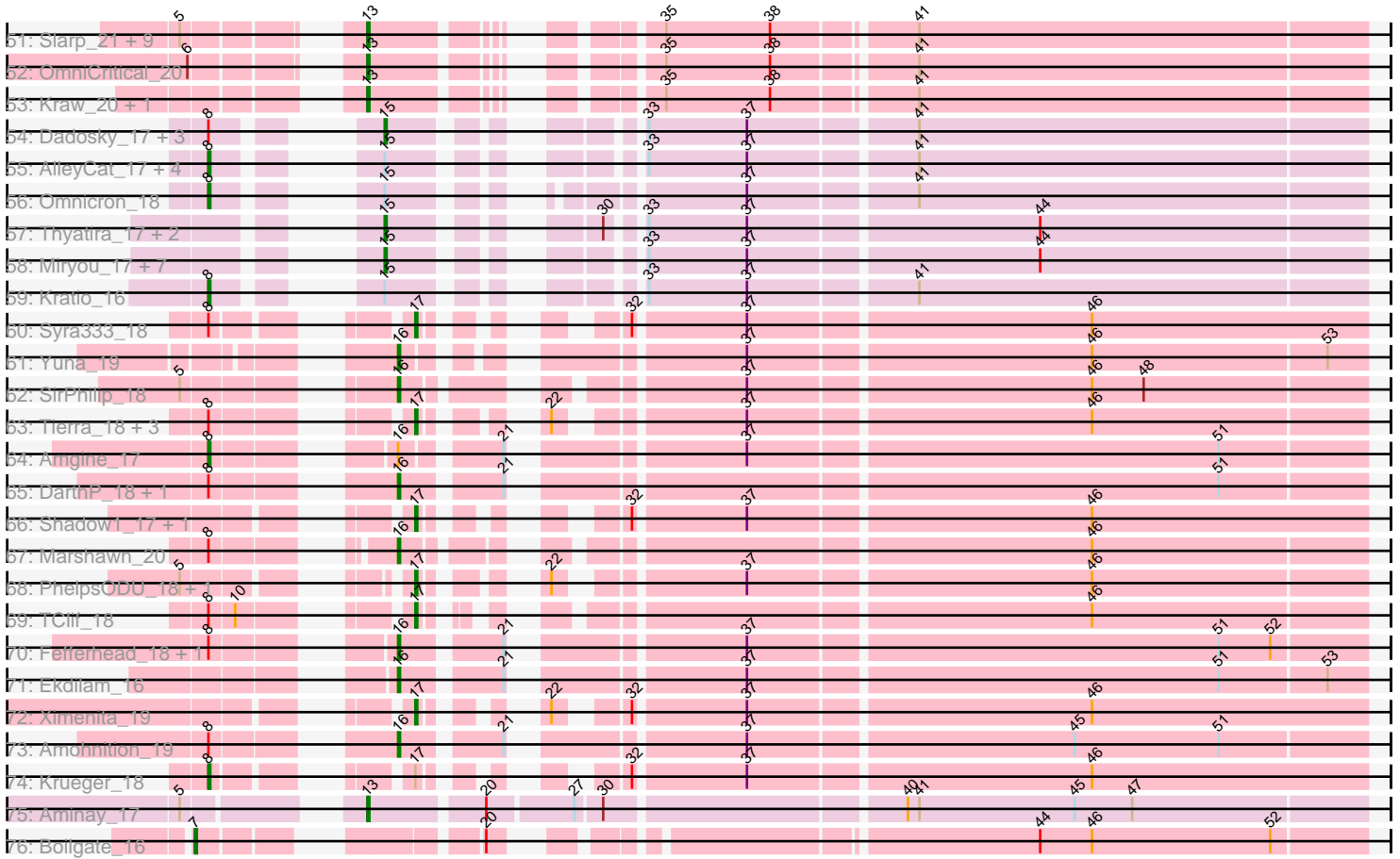


Pham 196255



Pham 196255



Note: Tracks are now grouped by subcluster and scaled. Switching in subcluster is indicated by changes in track color. Track scale is now set by default to display the region 30 bp upstream of start 1 to 30 bp downstream of the last possible start. If this default region is judged to be packed too tightly with annotated starts, the track will be further scaled to only show that region of the ORF with annotated starts. This action will be indicated by adding "Zoomed" to the title. For starts, yellow indicates the location of called starts comprised solely of Glimmer/GeneMark auto-annotations, green indicates the location of called starts with at least 1 manual gene annotation.

Pham 196255 Report

This analysis was run 12/09/24 on database version 580.

Pham number 196255 has 267 members, 13 are drafts.

Phages represented in each track:

- Track 1 : Camri_14, Darionha_14, Crespo_14, ShaboiShabazz_14, ZoMa_14, Gomashi_15, Gideon_14, ECartman_14, Jolene_14, Jane_14, Frosty24_14, Mowgli_14, CassieYates_14, Angel_14, OctaviousRex_15, DMoney_14, Kasen3_14, Sweets_14, Wendigo_14, Peeb_14, Avrafan_14, Cherrybomb426_14, Marmie_14, Periodt_14, Kareem_14, Jonghyun_14, Renaissance_14, Schiebel_14, Plagueis_14, Olga_14, Sizemore_14, Aroostook_14, Barkley26_14, Phish_14, Zombie_14, Hotshotbaby7_14, Hope_15, TomBrady_14, Chance64_15, BruceB_14, Grizzly_14, Maliketh_14, Cedasite_14, AzulaCat_14, JorRay_14, LouisV14_14, Phreak_14, Liefie_14, BPs_14
- Track 2 : PinkYoshi_14, BQuat_14, Coleslaw_14, Annihilator_14
- Track 3 : CLED96_14, DNAlII_0014, Remy19_14, GoldenAsh_14
- Track 4 : Halo_14
- Track 5 : Taheera_14, Terror_14
- Track 6 : Rabbs_14, Sneeze_14
- Track 7 : Paito_14
- Track 8 : Cambiare_15, Avocado_14
- Track 9 : Pace1224_14
- Track 10 : FlagStaff_14
- Track 11 : MOOREtheMARYer_14
- Track 12 : Pinnie_15
- Track 13 : Lemuria_14
- Track 14 : Jolie2_14
- Track 15 : Mercurio_15
- Track 16 : Antsirabe_14
- Track 17 : Stargaze_14
- Track 18 : JAWS_19, Padpat_19, Capricorn_19, Blizzard_19, BEEST_19, Belladonna_19, Lunahalos_19, Adephagia_19, Tachez_19, ActinUp_19, YoureAdopted_18, Mynx_19, Homura_19, Spock_19, MeaningOfLife_19, Durfee_19, ShiaSurprise_19, Llorens_19, Jayhawk_19, Rosmarinus_19, Ramen_19, CaseJules_19, CREW_19, Asayake_19, Jarvi_19, TruffulaTree_19, BGlluviae_19, Peel_19, Piatt_19, Padfoot_19, Dalmuri_19, Topper_19, Boiiii_19, Rapunzel97_19, Hyperbowlee_19, BarrelRoll_19, Twitch_19, Inky_20, Zabiza_19, Jeckyll_19, Atiba_19, Emerson_20, Veliki_19, AlishaPH_19, Slimphazie_19, HedwigODU_19
- Track 19 : LilPharaoh_15, Mdavu_15, Enkosi_15, Nikao_15, Nutello_15, SgtBeansprout_15, Torres_15, Binglebops_15, Amelie_15
- Track 20 : Scarlett_18, LeMond_18
- Track 21 : Yunkel11_19, Efra2_19, Guanica15_19

- Track 22 : SamuelLPlaqson_19, Urkel_19, DrHayes_19, TiniBug_19
- Track 23 : Deby_19, CheetoDust_19, Adonis_19, Angelica_19, Ganymede_20, Prithvi_19, Sulley_19, Tiri_19, Megsy_19, LindNT_19, TreyKay_19, QuincyRose_18, BaghaKamala_19, TaiwanKao_20, Pokerus_18, Joy99_19
- Track 24 : Shaobing_19, Richo_19, Niklas_19, Dartin_19, McMater_19
- Track 25 : Ageofdapage_19, Stinson_19, Devera_19, Illumine_19, Dole_19, Murucutumbu_19, LaterM_19
- Track 26 : MarkPhew_19
- Track 27 : KiSi_18
- Track 28 : TingHuaYa_19, LastHope_20
- Track 29 : Anaya_20
- Track 30 : CrimD_20
- Track 31 : Curiosium_20
- Track 32 : Beezoo_19, Geraldini_19
- Track 33 : Peanam_19
- Track 34 : Bella96_19
- Track 35 : Validus_19
- Track 36 : Oscar_18
- Track 37 : Chris_18
- Track 38 : Apocalypse_19, Zavala_19
- Track 39 : Nibb_18
- Track 40 : TM4_15
- Track 41 : Milly_15, Marcoliusprime_15, Findley_15, DismalFunk_16, Strobilo_15, DismalStressor_15
- Track 42 : Mufasa_15, BoostSeason_15
- Track 43 : ZoeJ_15
- Track 44 : Pharb_18
- Track 45 : TribbleTrouble_17
- Track 46 : ShedlockHolmes_18, TBond007_18, Hurricane_18, Pixie_19
- Track 47 : MacnCheese_19
- Track 48 : Keshu_18
- Track 49 : Taquito_18, Juliette_20, Ruthiejr_19, Eponine_20
- Track 50 : MissDaisy_20, Patt_21, Reptar3000_20
- Track 51 : Slarp_21, Fionnbharth_20, Chancellor_20, JF1_20, Cheetobro_20, SamScheppers_18, Y2_20, Wintermute_20, Mitti_20, Y10_20
- Track 52 : OmniCritical_20
- Track 53 : Kraw_20, Malthus_20
- Track 54 : Dadosky_17, InvictusManeo_17, Agent47_17, Edugator_17
- Track 55 : AlleyCat_17, Collard_18, Psycho_17, Rando14_17, Larva_17
- Track 56 : Omnicron_18
- Track 57 : Thyatira_17, Waterfoul_17, Feyre_17
- Track 58 : Miryou_17, SoSeph_17, OkiRoe_17, Heftyboy_17, Guillsminger_18, Gengar_17, Leston_17, Paola_17
- Track 59 : Kratio_16
- Track 60 : Syra333_18
- Track 61 : Yuna_19
- Track 62 : SirPhilip_18
- Track 63 : Tierra_18, Bryler_18, Cain_18, Phrank_18
- Track 64 : Amgine_17
- Track 65 : DarthP_18, Hammy_18
- Track 66 : Shadow1_17, Sunflower1121_17
- Track 67 : Marshawn_20
- Track 68 : PhelpsODU_18, Unicorn_18

- Track 69 : TClif_18
- Track 70 : Fefferhead_18, Ellie_16
- Track 71 : Ekdilam_16
- Track 72 : Ximenita_19
- Track 73 : Amohnition_19
- Track 74 : Krueger_18
- Track 75 : Aminay_17
- Track 76 : Boilgate_16

Summary of Final Annotations (See graph section above for start numbers):

The start number called the most often in the published annotations is 16, it was called in 111 of the 254 non-draft genes in the pham.

Genes that call this "Most Annotated" start:

- ActinUp_19, Adephegia_19, Adonis_19, Ageofdapage_19, AlishaPH_19, Amelie_15, Amohnition_19, Anaya_20, Angelica_19, Apocalypse_19, Asayake_19, Atiba_19, BEEST_19, BGIlluviae_19, BaghaKamala_19, BarrelRoll_19, Beezoo_19, Bella96_19, Belladonna_19, Binglebops_15, Blizzard_19, Boiiii_19, CREW_19, Capricorn_19, CaseJules_19, CheetoDust_19, Chris_18, CrimD_20, Dalmuri_19, DarthP_18, Deby_19, Devera_19, Dole_19, DrHayes_19, Durfee_19, Ekdilam_16, Ellie_16, Emerson_20, Enkosi_15, Fefferhead_18, Ganymede_20, Geraldini_19, Hammy_18, HedwigODU_19, Homura_19, Hurricane_18, Hyperbowlee_19, Illumine_19, Inky_20, JAWS_19, Jarvi_19, Jayhawk_19, Jeckyll_19, Joy99_19, Keshu_18, KiSi_18, LaterM_19, LeMond_18, LilPharaoh_15, LindNT_19, Llorens_19, Lunahalos_19, MacnCheese_19, MarkPhew_19, Marshawn_20, Mdavu_15, MeaningOfLife_19, Megsy_19, Murucutumbu_19, Mynx_19, Nibb_18, Nikao_15, Nutello_15, Oscar_18, Padfoot_19, Padpat_19, Peel_19, Pharb_18, Piatt_19, Pixie_19, Pokerus_18, Prithvi_19, QuincyRose_18, Ramen_19, Rapunzel97_19, Rosmarinus_19, SamuelLPlaqson_19, Scarlett_18, SgtBeansprout_15, ShedlockHolmes_18, ShiaSurprise_19, SirPhilip_18, Slimphazie_19, Spock_19, Stinson_19, Sulley_19, TBond007_18, Tachez_19, TaiwanKao_20, TiniBug_19, Tiri_19, Topper_19, Torres_15, TreyKay_19, TribbleTrouble_17, TruffulaTree_19, Twitch_19, Urkel_19, Veliki_19, YoureAdopted_18, Yuna_19, Zabiza_19, Zavala_19,

Genes that have the "Most Annotated" start but do not call it:

- Amgine_17,

Genes that do not have the "Most Annotated" start:

- Agent47_17, AlleyCat_17, Aminay_17, Angel_14, Annihilator_14, Antsirabe_14, Aroostook_14, Avocado_14, Avrafan_14, AzulaCat_14, BPs_14, BQuat_14, Barkley26_14, Boilgate_16, BoostSeason_15, BruceB_14, Bryler_18, CLED96_14, Cain_18, Cambiare_15, Camri_14, CassieYates_14, Cedasite_14, Chance64_15, Chancellor_20, Cheetobro_20, Cherrybomb426_14, Coleslaw_14, Collard_18, Crespo_14, Curiosium_20, DMoney_14, DNAlll_0014, Dadosky_17, Darionha_14, Dartin_19, DismalFunk_16, DismalStressor_15, ECartman_14, Edugator_17, Efra2_19, Eponine_20, Feyre_17, Findley_15, Fionnbharth_20, FlagStaff_14, Frosty24_14, Gengar_17, Gideon_14, GoldenAsh_14, Gomashi_15, Grizzly_14, Guanica15_19, Guillsminger_18, Halo_14, Heftyboy_17, Hope_15, Hotshotbaby7_14, InvictusManeo_17, JF1_20, Jane_14, Jolene_14, Jolie2_14,

Jonghyun_14, JorRay_14, Juliette_20, Kareem_14, Kasen3_14, Kratio_16, Kraw_20, Krueger_18, Larva_17, LastHope_20, Lemuria_14, Leston_17, Liefie_14, LouisV14_14, MOOREtheMARYer_14, Maliketh_14, Malthus_20, Marcoliusprime_15, Marmie_14, McMater_19, Mercurio_15, Milly_15, Miryou_17, MissDaisy_20, Mitti_20, Mowgli_14, Mufasa_15, Niklas_19, OctaviousRex_15, OkiRoe_17, Olga_14, OmniCritical_20, Omnicron_18, Pace1224_14, Paito_14, Paola_17, Patt_21, Peanam_19, Peeb_14, Periodt_14, PhelpsODU_18, Phish_14, Phrank_18, Phreak_14, PinkYoshi_14, Pinnie_15, Plagueis_14, Psycho_17, Rabbs_14, Rando14_17, Remy19_14, Renaissance_14, Reptar3000_20, Richo_19, Ruthiejr_19, SamScheppers_18, Schiebel_14, ShaboIshabazz_14, Shadow1_17, Shaobing_19, Sizemore_14, Slarp_21, Sneeze_14, SoSeph_17, Stargaze_14, Strobilo_15, Sunflower1121_17, Sweets_14, Syra333_18, TClif_18, TM4_15, Taheera_14, Taquito_18, Terror_14, Thyatira_17, Tierra_18, TingHuaYa_19, TomBrady_14, Unicorn_18, Validus_19, Waterfoul_17, Wendigo_14, Wintermute_20, Ximenita_19, Y10_20, Y2_20, Yunkel11_19, ZoMa_14, ZoeJ_15, Zombie_14,

Summary by start number:

Start 1:

- Found in 3 of 267 (1.1%) of genes in pham
- No Manual Annotations of this start.
- Called 33.3% of time when present
- Phage (with cluster) where this start called: Stargaze_14 (G5),

Start 2:

- Found in 62 of 267 (23.2%) of genes in pham
- Manual Annotations of this start: 5 of 254
- Called 8.1% of time when present
- Phage (with cluster) where this start called: CLED96_14 (G1), DNAllI_0014 (G1), FlagStaff_14 (G2), GoldenAsh_14 (G1), Remy19_14 (G1),

Start 5:

- Found in 102 of 267 (38.2%) of genes in pham
- Manual Annotations of this start: 2 of 254
- Called 2.0% of time when present
- Phage (with cluster) where this start called: Peanam_19 (K1), Validus_19 (K1),

Start 7:

- Found in 1 of 267 (0.4%) of genes in pham
- Manual Annotations of this start: 1 of 254
- Called 100.0% of time when present
- Phage (with cluster) where this start called: Boilgate_16 (K8),

Start 8:

- Found in 121 of 267 (45.3%) of genes in pham
- Manual Annotations of this start: 10 of 254
- Called 8.3% of time when present
- Phage (with cluster) where this start called: AlleyCat_17 (K5), Amgine_17 (K6), Collard_18 (K5), Curiosium_20 (K1), Kratio_16 (K5), Krueger_18 (K6), Larva_17 (K5), Omnicron_18 (K5), Psycho_17 (K5), Rando14_17 (K5),

Start 11:

- Found in 74 of 267 (27.7%) of genes in pham

- Manual Annotations of this start: 63 of 254
- Called 91.9% of time when present
- Phage (with cluster) where this start called: Angel_14 (G1), Annihilator_14 (G1), Antsirabe_14 (G5), Aroostook_14 (G1), Avocado_14 (G2), Avrafan_14 (G1), AzulaCat_14 (G1), BPs_14 (G1), BQuat_14 (G1), Barkley26_14 (G1), BruceB_14 (G1), Cambiare_15 (G2), Camri_14 (G1), CassieYates_14 (G1), Cedasite_14 (G1), Chance64_15 (G1), Cherrybomb426_14 (G1), Coleslaw_14 (G1), Crespo_14 (G1), DMoney_14 (G1), Darionha_14 (G1), ECartman_14 (G1), Frosty24_14 (G1), Gideon_14 (G1), Gomashi_15 (G1), Grizzly_14 (G1), Halo_14 (G1), Hope_15 (G1), Hotshotbaby7_14 (G1), Jane_14 (G1), Jolene_14 (G1), Jolie2_14 (G4), Jonghyun_14 (G1), JorRay_14 (G1), Kareem_14 (G1), Kasen3_14 (G1), Lemuria_14 (G4), Liefie_14 (G1), LouisV14_14 (G1), MOOREtheMAYer_14 (G3), Maliketh_14 (G1), Marmie_14 (G1), Mercurio_15 (G4), Mowgli_14 (G1), OctaviousRex_15 (G1), Olga_14 (G1), Pace1224_14 (G2), Paito_14 (G1), Peeb_14 (G1), Periodt_14 (G1), Phish_14 (G1), Phreak_14 (G1), PinkYoshi_14 (G1), Pinnie_15 (G3), Plagueis_14 (G1), Rabbs_14 (G1), Renaissance_14 (G1), Schiebel_14 (G1), ShaboiShabazz_14 (G1), Sizemore_14 (G1), Sneeze_14 (G1), Sweets_14 (G1), Taheera_14 (G1), Terror_14 (G1), TomBrady_14 (G1), Wendigo_14 (G1), ZoMa_14 (G1), Zombie_14 (G1),

Start 13:

- Found in 31 of 267 (11.6%) of genes in pham
- Manual Annotations of this start: 30 of 254
- Called 100.0% of time when present
- Phage (with cluster) where this start called: Aminay_17 (K7), BoostSeason_15 (K2), Chancellor_20 (K4), Cheetobro_20 (K4), DismalFunk_16 (K2), DismalStressor_15 (K2), Eponine_20 (K4), Findley_15 (K2), Fionnbharth_20 (K4), JF1_20 (K4), Juliette_20 (K4), Kraw_20 (K4), Malthus_20 (K4), Marcoliusprime_15 (K2), Milly_15 (K2), MissDaisy_20 (K4), Mitti_20 (K4), Mufasa_15 (K2), OmniCritical_20 (K4), Patt_21 (K4), Reptar3000_20 (K4), Ruthiejr_19 (K4), SamScheppers_18 (K4), Slarp_21 (K4), Strobilo_15 (K2), TM4_15 (K2), Taquito_18 (K4), Wintermute_20 (K4), Y10_20 (K4), Y2_20 (K4), ZoeJ_15 (K2),

Start 15:

- Found in 22 of 267 (8.2%) of genes in pham
- Manual Annotations of this start: 15 of 254
- Called 68.2% of time when present
- Phage (with cluster) where this start called: Agent47_17 (K5), Dadosky_17 (K5), Edugator_17 (K5), Feyre_17 (K5), Gengar_17 (K5), Guillsminger_18 (K5), Heftyboy_17 (K5), InvictusManeo_17 (K5), Leston_17 (K5), Miryou_17 (K5), OkiRoe_17 (K5), Paola_17 (K5), SoSeph_17 (K5), Thyatira_17 (K5), Waterfoul_17 (K5),

Start 16:

- Found in 114 of 267 (42.7%) of genes in pham
- Manual Annotations of this start: 111 of 254
- Called 99.1% of time when present
- Phage (with cluster) where this start called: ActinUp_19 (K1), Adephegia_19 (K1), Adonis_19 (K1), Ageofdapage_19 (K1), AlishaPH_19 (K1), Amelie_15 (K1), Amohnition_19 (K6), Anaya_20 (K1), Angelica_19 (K1), Apocalypse_19 (K1), Asayake_19 (K1), Atiba_19 (K1), BEEST_19 (K1), BGIlluviae_19 (K1), BaghaKamala_19 (K1), BarrelRoll_19 (K1), Beezoo_19 (K1), Bella96_19 (K1), Belladonna_19 (K1), Binglebops_15 (K1), Blizzard_19 (K1), Boiiii_19 (K1), CREW_19

(K1), Capricorn_19 (K1), CaseJules_19 (K1), CheetoDust_19 (K1), Chris_18 (K1), CrimD_20 (K1), Dalmuri_19 (K1), DarthP_18 (K6), Deby_19 (K1), Devera_19 (K1), Dole_19 (K1), DrHayes_19 (K1), Durfee_19 (K1), Ekdilam_16 (K6), Ellie_16 (K6), Emerson_20 (K1), Enkosi_15 (K1), Fefferhead_18 (K6), Ganymede_20 (K1), Geraldini_19 (K1), Hammy_18 (K6), HedwigODU_19 (K1), Homura_19 (K1), Hurricane_18 (K3), Hyperbowlee_19 (K1), Illumine_19 (K1), Inky_20 (K1), JAWS_19 (K1), Jarvi_19 (K1), Jayhawk_19 (K1), Jeckyll_19 (K1), Joy99_19 (K1), Keshu_18 (K3), KiSi_18 (K1), LaterM_19 (K1), LeMond_18 (K1), LilPharaoh_15 (K1), LindNT_19 (K1), Llorens_19 (K1), Lunahalos_19 (K1), MacnCheese_19 (K3), MarkPhew_19 (K1), Marshawn_20 (K6), Mdavu_15 (K1), MeaningOfLife_19 (K1), Megsy_19 (K1), Murucutumbu_19 (K1), Mynx_19 (K1), Nibb_18 (K1), Nikao_15 (K1), Nutello_15 (K1), Oscar_18 (K1), Padfoot_19 (K1), Padpat_19 (K1), Peel_19 (K1), Pharb_18 (K3), Piatt_19 (K1), Pixie_19 (K3), Pokerus_18 (K1), Prithvi_19 (K1), QuincyRose_18 (K1), Ramen_19 (K1), Rapunzel97_19 (K1), Rosmarinus_19 (K1), SamuelLPlaqson_19 (K1), Scarlett_18 (K1), SgtBeansprout_15 (K1), ShedlockHolmes_18 (K3), ShiaSurprise_19 (K1), SirPhilip_18 (K6), Slimphazie_19 (K1), Spock_19 (K1), Stinson_19 (K1), Sulley_19 (K1), TBond007_18 (K3), Tachez_19 (K1), TaiwanKao_20 (K1), TiniBug_19 (K1), Tiri_19 (K1), Topper_19 (K1), Torres_15 (K1), TreyKay_19 (K1), TribbleTrouble_17 (K3), TruffulaTree_19 (K1), Twitch_19 (K1), Urkel_19 (K1), Veliki_19 (K1), YoureAdopted_18 (K1), Yuna_19 (K6), Zabiza_19 (K1), Zavala_19 (K1),

Start 17:

- Found in 25 of 267 (9.4%) of genes in pham
- Manual Annotations of this start: 17 of 254
- Called 84.0% of time when present
- Phage (with cluster) where this start called: Bryler_18 (K6), Cain_18 (K6), Dartin_19 (K1), Efra2_19 (K1), Guanica15_19 (K1), LastHope_20 (K1), McMater_19 (K1), Niklas_19 (K1), PhelpsODU_18 (K6), Phrank_18 (K6), Richo_19 (K1), Shadow1_17 (K6), Shaobing_19 (K1), Sunflower1121_17 (K6), Syra333_18 (K6), TClif_18 (K6), Tierra_18 (K6), TingHuaYa_19 (K1), Unicorn_18 (K6), Ximenita_19 (K6), Yunkel11_19 (K1),

Summary by clusters:

There are 13 clusters represented in this pham: G5, G4, G3, G2, G1, K3, K2, K1, K7, K6, K5, K4, K8,

Info for manual annotations of cluster G1:

- Start number 2 was manually annotated 4 times for cluster G1.
- Start number 11 was manually annotated 56 times for cluster G1.

Info for manual annotations of cluster G2:

- Start number 2 was manually annotated 1 time for cluster G2.
- Start number 11 was manually annotated 2 times for cluster G2.

Info for manual annotations of cluster G3:

- Start number 11 was manually annotated 2 times for cluster G3.

Info for manual annotations of cluster G4:

- Start number 11 was manually annotated 2 times for cluster G4.

Info for manual annotations of cluster G5:

- Start number 11 was manually annotated 1 time for cluster G5.

Info for manual annotations of cluster K1:

- Start number 5 was manually annotated 2 times for cluster K1.
- Start number 8 was manually annotated 1 time for cluster K1.
- Start number 16 was manually annotated 94 times for cluster K1.
- Start number 17 was manually annotated 6 times for cluster K1.

Info for manual annotations of cluster K2:

- Start number 13 was manually annotated 10 times for cluster K2.

Info for manual annotations of cluster K3:

- Start number 16 was manually annotated 8 times for cluster K3.

Info for manual annotations of cluster K4:

- Start number 13 was manually annotated 19 times for cluster K4.

Info for manual annotations of cluster K5:

- Start number 8 was manually annotated 7 times for cluster K5.
- Start number 15 was manually annotated 15 times for cluster K5.

Info for manual annotations of cluster K6:

- Start number 8 was manually annotated 2 times for cluster K6.
- Start number 16 was manually annotated 9 times for cluster K6.
- Start number 17 was manually annotated 11 times for cluster K6.

Info for manual annotations of cluster K7:

- Start number 13 was manually annotated 1 time for cluster K7.

Info for manual annotations of cluster K8:

- Start number 7 was manually annotated 1 time for cluster K8.

Gene Information:

Gene: ActinUp_19 Start: 11232, Stop: 11669, Start Num: 16

Candidate Starts for ActinUp_19:

(Start: 5 @11154 has 2 MA's), (Start: 8 @11166 has 10 MA's), (Start: 16 @11232 has 111 MA's), (29, 11289), (39, 11406), (46, 11529), (51, 11595),

Gene: Adephagia_19 Start: 11232, Stop: 11669, Start Num: 16

Candidate Starts for Adephagia_19:

(Start: 5 @11154 has 2 MA's), (Start: 8 @11166 has 10 MA's), (Start: 16 @11232 has 111 MA's), (29, 11289), (39, 11406), (46, 11529), (51, 11595),

Gene: Adonis_19 Start: 11241, Stop: 11678, Start Num: 16

Candidate Starts for Adonis_19:

(Start: 5 @11163 has 2 MA's), (Start: 8 @11175 has 10 MA's), (Start: 16 @11241 has 111 MA's), (29, 11298), (46, 11538), (51, 11604),

Gene: Agent47_17 Start: 11377, Stop: 11823, Start Num: 15

Candidate Starts for Agent47_17:

(Start: 8 @11332 has 10 MA's), (Start: 15 @11377 has 15 MA's), (33, 11461), (37, 11512), (41, 11593),

Gene: Ageofdapage_19 Start: 11170, Stop: 11604, Start Num: 16

Candidate Starts for Ageofdapage_19:

(Start: 5 @11092 has 2 MA's), (Start: 8 @11104 has 10 MA's), (Start: 16 @11170 has 111 MA's), (37, 11293), (46, 11464), (51, 11530),

Gene: AlishaPH_19 Start: 11228, Stop: 11665, Start Num: 16

Candidate Starts for AlishaPH_19:

(Start: 5 @11150 has 2 MA's), (Start: 8 @11162 has 10 MA's), (Start: 16 @11228 has 111 MA's), (29, 11285), (39, 11402), (46, 11525), (51, 11591),

Gene: AlleyCat_17 Start: 11208, Stop: 11699, Start Num: 8

Candidate Starts for AlleyCat_17:

(Start: 8 @11208 has 10 MA's), (Start: 15 @11253 has 15 MA's), (33, 11337), (37, 11388), (41, 11469),

Gene: Amelie_15 Start: 10504, Stop: 10920, Start Num: 16

Candidate Starts for Amelie_15:

(Start: 16 @10504 has 111 MA's), (46, 10780),

Gene: Amgine_17 Start: 10940, Stop: 11455, Start Num: 8

Candidate Starts for Amgine_17:

(Start: 8 @10940 has 10 MA's), (Start: 16 @11003 has 111 MA's), (21, 11045), (37, 11144), (51, 11381),

Gene: Aminay_17 Start: 11067, Stop: 11555, Start Num: 13

Candidate Starts for Aminay_17:

(Start: 5 @11001 has 2 MA's), (Start: 13 @11067 has 30 MA's), (20, 11121), (27, 11163), (30, 11175), (40, 11319), (41, 11325), (45, 11406), (47, 11436),

Gene: Amohndition_19 Start: 11325, Stop: 11780, Start Num: 16

Candidate Starts for Amohndition_19:

(Start: 8 @11256 has 10 MA's), (Start: 16 @11325 has 111 MA's), (21, 11370), (37, 11469), (45, 11631), (51, 11706),

Gene: Anaya_20 Start: 11244, Stop: 11687, Start Num: 16

Candidate Starts for Anaya_20:

(Start: 16 @11244 has 111 MA's), (46, 11547), (51, 11613),

Gene: Angel_14 Start: 10569, Stop: 11078, Start Num: 11

Candidate Starts for Angel_14:

(Start: 2 @10494 has 5 MA's), (4, 10524), (Start: 11 @10569 has 63 MA's), (37, 10755), (47, 10947), (52, 11019),

Gene: Angelica_19 Start: 11203, Stop: 11640, Start Num: 16

Candidate Starts for Angelica_19:

(Start: 5 @11125 has 2 MA's), (Start: 8 @11137 has 10 MA's), (Start: 16 @11203 has 111 MA's), (29, 11260), (46, 11500), (51, 11566),

Gene: Annihilator_14 Start: 10560, Stop: 11069, Start Num: 11

Candidate Starts for Annihilator_14:

(Start: 2 @10494 has 5 MA's), (4, 10524), (Start: 11 @10560 has 63 MA's), (37, 10746), (47, 10938), (52, 11010),

Gene: Antsirabe_14 Start: 10908, Stop: 11438, Start Num: 11

Candidate Starts for Antsirabe_14:

(Start: 11 @10908 has 63 MA's), (34, 11058), (42, 11214), (43, 11232), (44, 11259), (49, 11325), (51, 11352),

Gene: Apocalypse_19 Start: 11206, Stop: 11643, Start Num: 16

Candidate Starts for Apocalypse_19:

(Start: 5 @11128 has 2 MA's), (Start: 8 @11140 has 10 MA's), (Start: 16 @11206 has 111 MA's), (29, 11263), (39, 11380), (46, 11503), (51, 11569),

Gene: Aroostook_14 Start: 10569, Stop: 11078, Start Num: 11

Candidate Starts for Aroostook_14:

(Start: 2 @10494 has 5 MA's), (4, 10524), (Start: 11 @10569 has 63 MA's), (37, 10755), (47, 10947), (52, 11019),

Gene: Asayake_19 Start: 11269, Stop: 11706, Start Num: 16

Candidate Starts for Asayake_19:

(Start: 5 @11191 has 2 MA's), (Start: 8 @11203 has 10 MA's), (Start: 16 @11269 has 111 MA's), (29, 11326), (39, 11443), (46, 11566), (51, 11632),

Gene: Atiba_19 Start: 11195, Stop: 11632, Start Num: 16

Candidate Starts for Atiba_19:

(Start: 5 @11117 has 2 MA's), (Start: 8 @11129 has 10 MA's), (Start: 16 @11195 has 111 MA's), (29, 11252), (39, 11369), (46, 11492), (51, 11558),

Gene: Avocado_14 Start: 10731, Stop: 11291, Start Num: 11

Candidate Starts for Avocado_14:

(1, 10641), (Start: 11 @10731 has 63 MA's), (36, 10929), (42, 11067), (51, 11205), (52, 11232), (54, 11277),

Gene: Avrafan_14 Start: 10569, Stop: 11078, Start Num: 11

Candidate Starts for Avrafan_14:

(Start: 2 @10494 has 5 MA's), (4, 10524), (Start: 11 @10569 has 63 MA's), (37, 10755), (47, 10947), (52, 11019),

Gene: AzulaCat_14 Start: 10569, Stop: 11078, Start Num: 11

Candidate Starts for AzulaCat_14:

(Start: 2 @10494 has 5 MA's), (4, 10524), (Start: 11 @10569 has 63 MA's), (37, 10755), (47, 10947), (52, 11019),

Gene: BEEST_19 Start: 11269, Stop: 11706, Start Num: 16

Candidate Starts for BEEST_19:

(Start: 5 @11191 has 2 MA's), (Start: 8 @11203 has 10 MA's), (Start: 16 @11269 has 111 MA's), (29, 11326), (39, 11443), (46, 11566), (51, 11632),

Gene: BGlluviae_19 Start: 11269, Stop: 11706, Start Num: 16

Candidate Starts for BGlluviae_19:

(Start: 5 @11191 has 2 MA's), (Start: 8 @11203 has 10 MA's), (Start: 16 @11269 has 111 MA's), (29, 11326), (39, 11443), (46, 11566), (51, 11632),

Gene: BPs_14 Start: 10569, Stop: 11078, Start Num: 11

Candidate Starts for BPs_14:

(Start: 2 @10494 has 5 MA's), (4, 10524), (Start: 11 @10569 has 63 MA's), (37, 10755), (47, 10947), (52, 11019),

Gene: BQuat_14 Start: 10560, Stop: 11069, Start Num: 11

Candidate Starts for BQuat_14:

(Start: 2 @10494 has 5 MA's), (4, 10524), (Start: 11 @10560 has 63 MA's), (37, 10746), (47, 10938), (52, 11010),

Gene: BaghaKamala_19 Start: 11198, Stop: 11635, Start Num: 16

Candidate Starts for BaghaKamala_19:

(Start: 5 @11120 has 2 MA's), (Start: 8 @11132 has 10 MA's), (Start: 16 @11198 has 111 MA's), (29, 11255), (46, 11495), (51, 11561),

Gene: Barkley26_14 Start: 10569, Stop: 11078, Start Num: 11

Candidate Starts for Barkley26_14:

(Start: 2 @10494 has 5 MA's), (4, 10524), (Start: 11 @10569 has 63 MA's), (37, 10755), (47, 10947), (52, 11019),

Gene: BarrelRoll_19 Start: 11221, Stop: 11658, Start Num: 16

Candidate Starts for BarrelRoll_19:

(Start: 5 @11143 has 2 MA's), (Start: 8 @11155 has 10 MA's), (Start: 16 @11221 has 111 MA's), (29, 11278), (39, 11395), (46, 11518), (51, 11584),

Gene: Beezoo_19 Start: 11245, Stop: 11682, Start Num: 16

Candidate Starts for Beezoo_19:

(Start: 16 @11245 has 111 MA's), (29, 11302), (39, 11419), (46, 11542), (51, 11608),

Gene: Bella96_19 Start: 11152, Stop: 11595, Start Num: 16

Candidate Starts for Bella96_19:

(Start: 5 @11074 has 2 MA's), (Start: 8 @11086 has 10 MA's), (Start: 16 @11152 has 111 MA's), (46, 11455), (51, 11521),

Gene: Belladonna_19 Start: 11269, Stop: 11706, Start Num: 16

Candidate Starts for Belladonna_19:

(Start: 5 @11191 has 2 MA's), (Start: 8 @11203 has 10 MA's), (Start: 16 @11269 has 111 MA's), (29, 11326), (39, 11443), (46, 11566), (51, 11632),

Gene: Biglebops_15 Start: 10504, Stop: 10920, Start Num: 16

Candidate Starts for Biglebops_15:

(Start: 16 @10504 has 111 MA's), (46, 10780),

Gene: Blizzard_19 Start: 11269, Stop: 11706, Start Num: 16

Candidate Starts for Blizzard_19:

(Start: 5 @11191 has 2 MA's), (Start: 8 @11203 has 10 MA's), (Start: 16 @11269 has 111 MA's), (29, 11326), (39, 11443), (46, 11566), (51, 11632),

Gene: Boiiii_19 Start: 11271, Stop: 11708, Start Num: 16

Candidate Starts for Boiiii_19:

(Start: 5 @11193 has 2 MA's), (Start: 8 @11205 has 10 MA's), (Start: 16 @11271 has 111 MA's), (29, 11328), (39, 11445), (46, 11568), (51, 11634),

Gene: Boilgate_16 Start: 11192, Stop: 11695, Start Num: 7
Candidate Starts for Boilgate_16:
(Start: 7 @11192 has 1 MA's), (20, 11297), (44, 11528), (46, 11555), (52, 11648),

Gene: BoostSeason_15 Start: 9260, Stop: 9730, Start Num: 13
Candidate Starts for BoostSeason_15:
(Start: 8 @9203 has 10 MA's), (Start: 13 @9260 has 30 MA's), (24, 9350), (40, 9503),

Gene: BruceB_14 Start: 10569, Stop: 11078, Start Num: 11
Candidate Starts for BruceB_14:
(Start: 2 @10494 has 5 MA's), (4, 10524), (Start: 11 @10569 has 63 MA's), (37, 10755), (47, 10947),
(52, 11019),

Gene: Bryler_18 Start: 10254, Stop: 10676, Start Num: 17
Candidate Starts for Bryler_18:
(Start: 8 @10188 has 10 MA's), (Start: 17 @10254 has 17 MA's), (22, 10287), (37, 10365), (46,
10536),

Gene: CLED96_14 Start: 10494, Stop: 11078, Start Num: 2
Candidate Starts for CLED96_14:
(Start: 2 @10494 has 5 MA's), (4, 10524), (Start: 11 @10569 has 63 MA's), (37, 10755), (47, 10947),
(52, 11019),

Gene: CREW_19 Start: 11269, Stop: 11706, Start Num: 16
Candidate Starts for CREW_19:
(Start: 5 @11191 has 2 MA's), (Start: 8 @11203 has 10 MA's), (Start: 16 @11269 has 111 MA's), (29,
11326), (39, 11443), (46, 11566), (51, 11632),

Gene: Cain_18 Start: 10242, Stop: 10664, Start Num: 17
Candidate Starts for Cain_18:
(Start: 8 @10176 has 10 MA's), (Start: 17 @10242 has 17 MA's), (22, 10275), (37, 10353), (46,
10524),

Gene: Cambiare_15 Start: 11193, Stop: 11753, Start Num: 11
Candidate Starts for Cambiare_15:
(1, 11103), (Start: 11 @11193 has 63 MA's), (36, 11391), (42, 11529), (51, 11667), (52, 11694), (54,
11739),

Gene: Camri_14 Start: 10569, Stop: 11078, Start Num: 11
Candidate Starts for Camri_14:
(Start: 2 @10494 has 5 MA's), (4, 10524), (Start: 11 @10569 has 63 MA's), (37, 10755), (47, 10947),
(52, 11019),

Gene: Capricorn_19 Start: 11269, Stop: 11706, Start Num: 16
Candidate Starts for Capricorn_19:
(Start: 5 @11191 has 2 MA's), (Start: 8 @11203 has 10 MA's), (Start: 16 @11269 has 111 MA's), (29,
11326), (39, 11443), (46, 11566), (51, 11632),

Gene: CaseJules_19 Start: 11269, Stop: 11706, Start Num: 16
Candidate Starts for CaseJules_19:
(Start: 5 @11191 has 2 MA's), (Start: 8 @11203 has 10 MA's), (Start: 16 @11269 has 111 MA's), (29,
11326), (39, 11443), (46, 11566), (51, 11632),

Gene: CassieYates_14 Start: 10569, Stop: 11078, Start Num: 11
Candidate Starts for CassieYates_14:
(Start: 2 @10494 has 5 MA's), (4, 10524), (Start: 11 @10569 has 63 MA's), (37, 10755), (47, 10947),
(52, 11019),

Gene: Cedasite_14 Start: 10569, Stop: 11078, Start Num: 11
Candidate Starts for Cedasite_14:
(Start: 2 @10494 has 5 MA's), (4, 10524), (Start: 11 @10569 has 63 MA's), (37, 10755), (47, 10947),
(52, 11019),

Gene: Chance64_15 Start: 10569, Stop: 11078, Start Num: 11
Candidate Starts for Chance64_15:
(Start: 2 @10494 has 5 MA's), (4, 10524), (Start: 11 @10569 has 63 MA's), (37, 10755), (47, 10947),
(52, 11019),

Gene: Chancellor_20 Start: 12441, Stop: 12890, Start Num: 13
Candidate Starts for Chancellor_20:
(Start: 5 @12378 has 2 MA's), (Start: 13 @12441 has 30 MA's), (35, 12540), (38, 12594), (41, 12660),

Gene: CheetoDust_19 Start: 11246, Stop: 11683, Start Num: 16
Candidate Starts for CheetoDust_19:
(Start: 5 @11168 has 2 MA's), (Start: 8 @11180 has 10 MA's), (Start: 16 @11246 has 111 MA's), (29,
11303), (46, 11543), (51, 11609),

Gene: Cheetobro_20 Start: 12441, Stop: 12890, Start Num: 13
Candidate Starts for Cheetobro_20:
(Start: 5 @12378 has 2 MA's), (Start: 13 @12441 has 30 MA's), (35, 12540), (38, 12594), (41, 12660),

Gene: Cherrybomb426_14 Start: 10569, Stop: 11078, Start Num: 11
Candidate Starts for Cherrybomb426_14:
(Start: 2 @10494 has 5 MA's), (4, 10524), (Start: 11 @10569 has 63 MA's), (37, 10755), (47, 10947),
(52, 11019),

Gene: Chris_18 Start: 10215, Stop: 10664, Start Num: 16
Candidate Starts for Chris_18:
(14, 10209), (Start: 16 @10215 has 111 MA's), (46, 10524), (47, 10545),

Gene: Coleslaw_14 Start: 10560, Stop: 11069, Start Num: 11
Candidate Starts for Coleslaw_14:
(Start: 2 @10494 has 5 MA's), (4, 10524), (Start: 11 @10560 has 63 MA's), (37, 10746), (47, 10938),
(52, 11010),

Gene: Collard_18 Start: 11293, Stop: 11784, Start Num: 8
Candidate Starts for Collard_18:
(Start: 8 @11293 has 10 MA's), (Start: 15 @11338 has 15 MA's), (33, 11422), (37, 11473), (41,
11554),

Gene: Crespo_14 Start: 10570, Stop: 11079, Start Num: 11
Candidate Starts for Crespo_14:
(Start: 2 @10495 has 5 MA's), (4, 10525), (Start: 11 @10570 has 63 MA's), (37, 10756), (47, 10948),
(52, 11020),

Gene: CrimD_20 Start: 11200, Stop: 11640, Start Num: 16

Candidate Starts for CrimD_20:

(Start: 16 @11200 has 111 MA's), (25, 11251), (46, 11500), (51, 11566),

Gene: Curiosium_20 Start: 10615, Stop: 11094, Start Num: 8

Candidate Starts for Curiosium_20:

(Start: 8 @10615 has 10 MA's), (Start: 17 @10681 has 17 MA's), (22, 10705), (32, 10729), (46, 10954),

Gene: DMoney_14 Start: 10569, Stop: 11078, Start Num: 11

Candidate Starts for DMoney_14:

(Start: 2 @10494 has 5 MA's), (4, 10524), (Start: 11 @10569 has 63 MA's), (37, 10755), (47, 10947), (52, 11019),

Gene: DNAIII_0014 Start: 10503, Stop: 11087, Start Num: 2

Candidate Starts for DNAIII_0014:

(Start: 2 @10503 has 5 MA's), (4, 10533), (Start: 11 @10578 has 63 MA's), (37, 10764), (47, 10956), (52, 11028),

Gene: Dadosky_17 Start: 11254, Stop: 11700, Start Num: 15

Candidate Starts for Dadosky_17:

(Start: 8 @11209 has 10 MA's), (Start: 15 @11254 has 15 MA's), (33, 11338), (37, 11389), (41, 11470),

Gene: Dalmuri_19 Start: 11269, Stop: 11706, Start Num: 16

Candidate Starts for Dalmuri_19:

(Start: 5 @11191 has 2 MA's), (Start: 8 @11203 has 10 MA's), (Start: 16 @11269 has 111 MA's), (29, 11326), (39, 11443), (46, 11566), (51, 11632),

Gene: Darionha_14 Start: 10569, Stop: 11078, Start Num: 11

Candidate Starts for Darionha_14:

(Start: 2 @10494 has 5 MA's), (4, 10524), (Start: 11 @10569 has 63 MA's), (37, 10755), (47, 10947), (52, 11019),

Gene: DarthP_18 Start: 11325, Stop: 11780, Start Num: 16

Candidate Starts for DarthP_18:

(Start: 8 @11256 has 10 MA's), (Start: 16 @11325 has 111 MA's), (21, 11370), (51, 11706),

Gene: Dartin_19 Start: 10305, Stop: 10721, Start Num: 17

Candidate Starts for Dartin_19:

(Start: 5 @10227 has 2 MA's), (Start: 17 @10305 has 17 MA's), (22, 10332), (46, 10581),

Gene: Deby_19 Start: 11203, Stop: 11640, Start Num: 16

Candidate Starts for Deby_19:

(Start: 5 @11125 has 2 MA's), (Start: 8 @11137 has 10 MA's), (Start: 16 @11203 has 111 MA's), (29, 11260), (46, 11500), (51, 11566),

Gene: Devera_19 Start: 11230, Stop: 11664, Start Num: 16

Candidate Starts for Devera_19:

(Start: 5 @11152 has 2 MA's), (Start: 8 @11164 has 10 MA's), (Start: 16 @11230 has 111 MA's), (37, 11353), (46, 11524), (51, 11590),

Gene: DismalFunk_16 Start: 9253, Stop: 9702, Start Num: 13

Candidate Starts for DismalFunk_16:

(Start: 8 @9196 has 10 MA's), (Start: 13 @9253 has 30 MA's), (24, 9325), (40, 9475), (41, 9481),

Gene: DismalStressor_15 Start: 9253, Stop: 9702, Start Num: 13

Candidate Starts for DismalStressor_15:

(Start: 8 @9196 has 10 MA's), (Start: 13 @9253 has 30 MA's), (24, 9325), (40, 9475), (41, 9481),

Gene: Dole_19 Start: 11232, Stop: 11666, Start Num: 16

Candidate Starts for Dole_19:

(Start: 5 @11154 has 2 MA's), (Start: 8 @11166 has 10 MA's), (Start: 16 @11232 has 111 MA's), (37, 11355), (46, 11526), (51, 11592),

Gene: DrHayes_19 Start: 11173, Stop: 11613, Start Num: 16

Candidate Starts for DrHayes_19:

(Start: 5 @11095 has 2 MA's), (Start: 8 @11107 has 10 MA's), (12, 11134), (Start: 16 @11173 has 111 MA's), (46, 11473), (51, 11539),

Gene: Durfee_19 Start: 11269, Stop: 11706, Start Num: 16

Candidate Starts for Durfee_19:

(Start: 5 @11191 has 2 MA's), (Start: 8 @11203 has 10 MA's), (Start: 16 @11269 has 111 MA's), (29, 11326), (39, 11443), (46, 11566), (51, 11632),

Gene: ECartman_14 Start: 10569, Stop: 11078, Start Num: 11

Candidate Starts for ECartman_14:

(Start: 2 @10494 has 5 MA's), (4, 10524), (Start: 11 @10569 has 63 MA's), (37, 10755), (47, 10947), (52, 11019),

Gene: Edugator_17 Start: 11254, Stop: 11700, Start Num: 15

Candidate Starts for Edugator_17:

(Start: 8 @11209 has 10 MA's), (Start: 15 @11254 has 15 MA's), (33, 11338), (37, 11389), (41, 11470),

Gene: Efra2_19 Start: 10171, Stop: 10584, Start Num: 17

Candidate Starts for Efra2_19:

(Start: 8 @10105 has 10 MA's), (Start: 17 @10171 has 17 MA's), (22, 10195), (32, 10219), (46, 10444),

Gene: Ekdilam_16 Start: 11036, Stop: 11491, Start Num: 16

Candidate Starts for Ekdilam_16:

(Start: 16 @11036 has 111 MA's), (21, 11081), (37, 11180), (51, 11417), (53, 11471),

Gene: Ellie_16 Start: 11081, Stop: 11536, Start Num: 16

Candidate Starts for Ellie_16:

(Start: 8 @11015 has 10 MA's), (Start: 16 @11081 has 111 MA's), (21, 11126), (37, 11225), (51, 11462), (52, 11489),

Gene: Emerson_20 Start: 11229, Stop: 11666, Start Num: 16

Candidate Starts for Emerson_20:

(Start: 5 @11151 has 2 MA's), (Start: 8 @11163 has 10 MA's), (Start: 16 @11229 has 111 MA's), (29, 11286), (39, 11403), (46, 11526), (51, 11592),

Gene: Enkosi_15 Start: 10504, Stop: 10920, Start Num: 16

Candidate Starts for Enkosi_15:

(Start: 16 @10504 has 111 MA's), (46, 10780),

Gene: Eponine_20 Start: 12303, Stop: 12755, Start Num: 13
Candidate Starts for Eponine_20:
(Start: 13 @12303 has 30 MA's), (26, 12372), (37, 12447), (38, 12459), (41, 12525), (52, 12708),

Gene: Fefferhead_18 Start: 11248, Stop: 11703, Start Num: 16
Candidate Starts for Fefferhead_18:
(Start: 8 @11182 has 10 MA's), (Start: 16 @11248 has 111 MA's), (21, 11293), (37, 11392), (51, 11629), (52, 11656),

Gene: Feyre_17 Start: 11196, Stop: 11642, Start Num: 15
Candidate Starts for Feyre_17:
(Start: 15 @11196 has 15 MA's), (30, 11268), (33, 11280), (37, 11331), (44, 11475),

Gene: Findley_15 Start: 9253, Stop: 9702, Start Num: 13
Candidate Starts for Findley_15:
(Start: 8 @9196 has 10 MA's), (Start: 13 @9253 has 30 MA's), (24, 9325), (40, 9475), (41, 9481),

Gene: Fionnbharth_20 Start: 12431, Stop: 12880, Start Num: 13
Candidate Starts for Fionnbharth_20:
(Start: 5 @12368 has 2 MA's), (Start: 13 @12431 has 30 MA's), (35, 12530), (38, 12584), (41, 12650),

Gene: FlagStaff_14 Start: 10592, Stop: 11215, Start Num: 2
Candidate Starts for FlagStaff_14:
(Start: 2 @10592 has 5 MA's), (Start: 11 @10664 has 63 MA's), (36, 10853), (40, 10967), (51, 11129), (52, 11156),

Gene: Frosty24_14 Start: 10569, Stop: 11078, Start Num: 11
Candidate Starts for Frosty24_14:
(Start: 2 @10494 has 5 MA's), (4, 10524), (Start: 11 @10569 has 63 MA's), (37, 10755), (47, 10947), (52, 11019),

Gene: Ganymede_20 Start: 11249, Stop: 11686, Start Num: 16
Candidate Starts for Ganymede_20:
(Start: 5 @11171 has 2 MA's), (Start: 8 @11183 has 10 MA's), (Start: 16 @11249 has 111 MA's), (29, 11306), (46, 11546), (51, 11612),

Gene: Gengar_17 Start: 11303, Stop: 11749, Start Num: 15
Candidate Starts for Gengar_17:
(Start: 15 @11303 has 15 MA's), (33, 11387), (37, 11438), (44, 11582),

Gene: Geraldini_19 Start: 11245, Stop: 11682, Start Num: 16
Candidate Starts for Geraldini_19:
(Start: 16 @11245 has 111 MA's), (29, 11302), (39, 11419), (46, 11542), (51, 11608),

Gene: Gideon_14 Start: 10569, Stop: 11078, Start Num: 11
Candidate Starts for Gideon_14:
(Start: 2 @10494 has 5 MA's), (4, 10524), (Start: 11 @10569 has 63 MA's), (37, 10755), (47, 10947), (52, 11019),

Gene: GoldenAsh_14 Start: 10494, Stop: 11078, Start Num: 2
Candidate Starts for GoldenAsh_14:

(Start: 2 @10494 has 5 MA's), (4, 10524), (Start: 11 @10569 has 63 MA's), (37, 10755), (47, 10947), (52, 11019),

Gene: Gomashi_15 Start: 10570, Stop: 11079, Start Num: 11

Candidate Starts for Gomashi_15:

(Start: 2 @10495 has 5 MA's), (4, 10525), (Start: 11 @10570 has 63 MA's), (37, 10756), (47, 10948), (52, 11020),

Gene: Grizzly_14 Start: 10569, Stop: 11078, Start Num: 11

Candidate Starts for Grizzly_14:

(Start: 2 @10494 has 5 MA's), (4, 10524), (Start: 11 @10569 has 63 MA's), (37, 10755), (47, 10947), (52, 11019),

Gene: Guanica15_19 Start: 10187, Stop: 10600, Start Num: 17

Candidate Starts for Guanica15_19:

(Start: 8 @10121 has 10 MA's), (Start: 17 @10187 has 17 MA's), (22, 10211), (32, 10235), (46, 10460),

Gene: Guillsminger_18 Start: 11278, Stop: 11724, Start Num: 15

Candidate Starts for Guillsminger_18:

(Start: 15 @11278 has 15 MA's), (33, 11362), (37, 11413), (44, 11557),

Gene: Halo_14 Start: 10564, Stop: 11073, Start Num: 11

Candidate Starts for Halo_14:

(Start: 2 @10489 has 5 MA's), (Start: 11 @10564 has 63 MA's), (37, 10750), (47, 10942), (52, 11014),

Gene: Hammy_18 Start: 11319, Stop: 11774, Start Num: 16

Candidate Starts for Hammy_18:

(Start: 8 @11250 has 10 MA's), (Start: 16 @11319 has 111 MA's), (21, 11364), (51, 11700),

Gene: HedwigODU_19 Start: 11232, Stop: 11669, Start Num: 16

Candidate Starts for HedwigODU_19:

(Start: 5 @11154 has 2 MA's), (Start: 8 @11166 has 10 MA's), (Start: 16 @11232 has 111 MA's), (29, 11289), (39, 11406), (46, 11529), (51, 11595),

Gene: Heftyboy_17 Start: 11405, Stop: 11851, Start Num: 15

Candidate Starts for Heftyboy_17:

(Start: 15 @11405 has 15 MA's), (33, 11489), (37, 11540), (44, 11684),

Gene: Homura_19 Start: 11269, Stop: 11706, Start Num: 16

Candidate Starts for Homura_19:

(Start: 5 @11191 has 2 MA's), (Start: 8 @11203 has 10 MA's), (Start: 16 @11269 has 111 MA's), (29, 11326), (39, 11443), (46, 11566), (51, 11632),

Gene: Hope_15 Start: 10569, Stop: 11078, Start Num: 11

Candidate Starts for Hope_15:

(Start: 2 @10494 has 5 MA's), (4, 10524), (Start: 11 @10569 has 63 MA's), (37, 10755), (47, 10947), (52, 11019),

Gene: Hotshotbaby7_14 Start: 10569, Stop: 11078, Start Num: 11

Candidate Starts for Hotshotbaby7_14:

(Start: 2 @10494 has 5 MA's), (4, 10524), (Start: 11 @10569 has 63 MA's), (37, 10755), (47, 10947), (52, 11019),

Gene: Hurricane_18 Start: 11360, Stop: 11794, Start Num: 16

Candidate Starts for Hurricane_18:

(Start: 8 @11297 has 10 MA's), (Start: 16 @11360 has 111 MA's), (19, 11378), (37, 11483), (44, 11627), (46, 11654), (47, 11675),

Gene: Hyperbowlee_19 Start: 11269, Stop: 11706, Start Num: 16

Candidate Starts for Hyperbowlee_19:

(Start: 5 @11191 has 2 MA's), (Start: 8 @11203 has 10 MA's), (Start: 16 @11269 has 111 MA's), (29, 11326), (39, 11443), (46, 11566), (51, 11632),

Gene: Illumine_19 Start: 11232, Stop: 11666, Start Num: 16

Candidate Starts for Illumine_19:

(Start: 5 @11154 has 2 MA's), (Start: 8 @11166 has 10 MA's), (Start: 16 @11232 has 111 MA's), (37, 11355), (46, 11526), (51, 11592),

Gene: Inky_20 Start: 11269, Stop: 11706, Start Num: 16

Candidate Starts for Inky_20:

(Start: 5 @11191 has 2 MA's), (Start: 8 @11203 has 10 MA's), (Start: 16 @11269 has 111 MA's), (29, 11326), (39, 11443), (46, 11566), (51, 11632),

Gene: InvictusManeo_17 Start: 11381, Stop: 11827, Start Num: 15

Candidate Starts for InvictusManeo_17:

(Start: 8 @11336 has 10 MA's), (Start: 15 @11381 has 15 MA's), (33, 11465), (37, 11516), (41, 11597),

Gene: JAWS_19 Start: 11223, Stop: 11660, Start Num: 16

Candidate Starts for JAWS_19:

(Start: 5 @11145 has 2 MA's), (Start: 8 @11157 has 10 MA's), (Start: 16 @11223 has 111 MA's), (29, 11280), (39, 11397), (46, 11520), (51, 11586),

Gene: JF1_20 Start: 12430, Stop: 12879, Start Num: 13

Candidate Starts for JF1_20:

(Start: 5 @12367 has 2 MA's), (Start: 13 @12430 has 30 MA's), (35, 12529), (38, 12583), (41, 12649),

Gene: Jane_14 Start: 10569, Stop: 11078, Start Num: 11

Candidate Starts for Jane_14:

(Start: 2 @10494 has 5 MA's), (4, 10524), (Start: 11 @10569 has 63 MA's), (37, 10755), (47, 10947), (52, 11019),

Gene: Jarvi_19 Start: 11269, Stop: 11706, Start Num: 16

Candidate Starts for Jarvi_19:

(Start: 5 @11191 has 2 MA's), (Start: 8 @11203 has 10 MA's), (Start: 16 @11269 has 111 MA's), (29, 11326), (39, 11443), (46, 11566), (51, 11632),

Gene: Jayhawk_19 Start: 11233, Stop: 11670, Start Num: 16

Candidate Starts for Jayhawk_19:

(Start: 5 @11155 has 2 MA's), (Start: 8 @11167 has 10 MA's), (Start: 16 @11233 has 111 MA's), (29, 11290), (39, 11407), (46, 11530), (51, 11596),

Gene: Jeckyll_19 Start: 11269, Stop: 11706, Start Num: 16

Candidate Starts for Jeckyll_19:

(Start: 5 @11191 has 2 MA's), (Start: 8 @11203 has 10 MA's), (Start: 16 @11269 has 111 MA's), (29, 11326), (39, 11443), (46, 11566), (51, 11632),

Gene: Jolene_14 Start: 10569, Stop: 11078, Start Num: 11

Candidate Starts for Jolene_14:

(Start: 2 @10494 has 5 MA's), (4, 10524), (Start: 11 @10569 has 63 MA's), (37, 10755), (47, 10947), (52, 11019),

Gene: Jolie2_14 Start: 9852, Stop: 10367, Start Num: 11

Candidate Starts for Jolie2_14:

(Start: 11 @9852 has 63 MA's), (34, 9996), (50, 10266), (52, 10308),

Gene: Jonghyun_14 Start: 10569, Stop: 11078, Start Num: 11

Candidate Starts for Jonghyun_14:

(Start: 2 @10494 has 5 MA's), (4, 10524), (Start: 11 @10569 has 63 MA's), (37, 10755), (47, 10947), (52, 11019),

Gene: JorRay_14 Start: 10569, Stop: 11078, Start Num: 11

Candidate Starts for JorRay_14:

(Start: 2 @10494 has 5 MA's), (4, 10524), (Start: 11 @10569 has 63 MA's), (37, 10755), (47, 10947), (52, 11019),

Gene: Joy99_19 Start: 11198, Stop: 11635, Start Num: 16

Candidate Starts for Joy99_19:

(Start: 5 @11120 has 2 MA's), (Start: 8 @11132 has 10 MA's), (Start: 16 @11198 has 111 MA's), (29, 11255), (46, 11495), (51, 11561),

Gene: Juliette_20 Start: 12303, Stop: 12755, Start Num: 13

Candidate Starts for Juliette_20:

(Start: 13 @12303 has 30 MA's), (26, 12372), (37, 12447), (38, 12459), (41, 12525), (52, 12708),

Gene: Kareem_14 Start: 10569, Stop: 11078, Start Num: 11

Candidate Starts for Kareem_14:

(Start: 2 @10494 has 5 MA's), (4, 10524), (Start: 11 @10569 has 63 MA's), (37, 10755), (47, 10947), (52, 11019),

Gene: Kasen3_14 Start: 10570, Stop: 11079, Start Num: 11

Candidate Starts for Kasen3_14:

(Start: 2 @10495 has 5 MA's), (4, 10525), (Start: 11 @10570 has 63 MA's), (37, 10756), (47, 10948), (52, 11020),

Gene: Keshu_18 Start: 11346, Stop: 11774, Start Num: 16

Candidate Starts for Keshu_18:

(Start: 8 @11283 has 10 MA's), (Start: 16 @11346 has 111 MA's), (19, 11358), (37, 11463), (44, 11607), (46, 11634),

Gene: KiSi_18 Start: 10161, Stop: 10604, Start Num: 16

Candidate Starts for KiSi_18:

(3, 10059), (Start: 5 @10086 has 2 MA's), (10, 10110), (Start: 16 @10161 has 111 MA's), (23, 10215), (46, 10464),

Gene: Kratio_16 Start: 10964, Stop: 11455, Start Num: 8

Candidate Starts for Kratio_16:

(Start: 8 @10964 has 10 MA's), (Start: 15 @11009 has 15 MA's), (33, 11093), (37, 11144), (41, 11225),

Gene: Kraw_20 Start: 12354, Stop: 12803, Start Num: 13
Candidate Starts for Kraw_20:
(Start: 13 @12354 has 30 MA's), (35, 12453), (38, 12507), (41, 12573),

Gene: Krueger_18 Start: 10147, Stop: 10632, Start Num: 8
Candidate Starts for Krueger_18:
(Start: 8 @10147 has 10 MA's), (Start: 17 @10210 has 17 MA's), (32, 10264), (37, 10318), (46, 10489),

Gene: Larva_17 Start: 11076, Stop: 11567, Start Num: 8
Candidate Starts for Larva_17:
(Start: 8 @11076 has 10 MA's), (Start: 15 @11121 has 15 MA's), (33, 11205), (37, 11256), (41, 11337),

Gene: LastHope_20 Start: 10261, Stop: 10674, Start Num: 17
Candidate Starts for LastHope_20:
(Start: 8 @10195 has 10 MA's), (Start: 17 @10261 has 17 MA's), (32, 10309), (46, 10534),

Gene: LaterM_19 Start: 11198, Stop: 11632, Start Num: 16
Candidate Starts for LaterM_19:
(Start: 5 @11120 has 2 MA's), (Start: 8 @11132 has 10 MA's), (Start: 16 @11198 has 111 MA's), (37, 11321), (46, 11492), (51, 11558),

Gene: LeMond_18 Start: 10232, Stop: 10675, Start Num: 16
Candidate Starts for LeMond_18:
(Start: 16 @10232 has 111 MA's), (23, 10286), (46, 10535),

Gene: Lemuria_14 Start: 9901, Stop: 10413, Start Num: 11
Candidate Starts for Lemuria_14:
(Start: 11 @9901 has 63 MA's), (28, 10003), (52, 10354),

Gene: Leston_17 Start: 11408, Stop: 11854, Start Num: 15
Candidate Starts for Leston_17:
(Start: 15 @11408 has 15 MA's), (33, 11492), (37, 11543), (44, 11687),

Gene: Liefie_14 Start: 10568, Stop: 11077, Start Num: 11
Candidate Starts for Liefie_14:
(Start: 2 @10493 has 5 MA's), (4, 10523), (Start: 11 @10568 has 63 MA's), (37, 10754), (47, 10946), (52, 11018),

Gene: LilPharaoh_15 Start: 10504, Stop: 10920, Start Num: 16
Candidate Starts for LilPharaoh_15:
(Start: 16 @10504 has 111 MA's), (46, 10780),

Gene: LindNT_19 Start: 11196, Stop: 11636, Start Num: 16
Candidate Starts for LindNT_19:
(Start: 5 @11118 has 2 MA's), (Start: 8 @11130 has 10 MA's), (Start: 16 @11196 has 111 MA's), (29, 11256), (46, 11496), (51, 11562),

Gene: Llorens_19 Start: 11269, Stop: 11706, Start Num: 16

Candidate Starts for Llorens_19:

(Start: 5 @11191 has 2 MA's), (Start: 8 @11203 has 10 MA's), (Start: 16 @11269 has 111 MA's), (29, 11326), (39, 11443), (46, 11566), (51, 11632),

Gene: LouisV14_14 Start: 10569, Stop: 11078, Start Num: 11

Candidate Starts for LouisV14_14:

(Start: 2 @10494 has 5 MA's), (4, 10524), (Start: 11 @10569 has 63 MA's), (37, 10755), (47, 10947), (52, 11019),

Gene: Lunahalos_19 Start: 11269, Stop: 11706, Start Num: 16

Candidate Starts for Lunahalos_19:

(Start: 5 @11191 has 2 MA's), (Start: 8 @11203 has 10 MA's), (Start: 16 @11269 has 111 MA's), (29, 11326), (39, 11443), (46, 11566), (51, 11632),

Gene: MOOREtheMARYer_14 Start: 10788, Stop: 11321, Start Num: 11

Candidate Starts for MOOREtheMARYer_14:

(Start: 2 @10719 has 5 MA's), (Start: 11 @10788 has 63 MA's), (31, 10923), (34, 10944), (42, 11097), (44, 11142), (51, 11235),

Gene: MacnCheese_19 Start: 11578, Stop: 12018, Start Num: 16

Candidate Starts for MacnCheese_19:

(Start: 5 @11497 has 2 MA's), (Start: 16 @11578 has 111 MA's), (37, 11707), (44, 11851), (47, 11899),

Gene: Maliketh_14 Start: 10569, Stop: 11078, Start Num: 11

Candidate Starts for Maliketh_14:

(Start: 2 @10494 has 5 MA's), (4, 10524), (Start: 11 @10569 has 63 MA's), (37, 10755), (47, 10947), (52, 11019),

Gene: Malthus_20 Start: 12354, Stop: 12803, Start Num: 13

Candidate Starts for Malthus_20:

(Start: 13 @12354 has 30 MA's), (35, 12453), (38, 12507), (41, 12573),

Gene: Marcoliusprime_15 Start: 9253, Stop: 9702, Start Num: 13

Candidate Starts for Marcoliusprime_15:

(Start: 8 @9196 has 10 MA's), (Start: 13 @9253 has 30 MA's), (24, 9325), (40, 9475), (41, 9481),

Gene: MarkPhew_19 Start: 10120, Stop: 10566, Start Num: 16

Candidate Starts for MarkPhew_19:

(Start: 16 @10120 has 111 MA's), (46, 10426), (47, 10447),

Gene: Marmie_14 Start: 10569, Stop: 11078, Start Num: 11

Candidate Starts for Marmie_14:

(Start: 2 @10494 has 5 MA's), (4, 10524), (Start: 11 @10569 has 63 MA's), (37, 10755), (47, 10947), (52, 11019),

Gene: Marshawn_20 Start: 10810, Stop: 11253, Start Num: 16

Candidate Starts for Marshawn_20:

(Start: 8 @10753 has 10 MA's), (Start: 16 @10810 has 111 MA's), (46, 11113),

Gene: McMater_19 Start: 10305, Stop: 10721, Start Num: 17

Candidate Starts for McMater_19:

(Start: 5 @10227 has 2 MA's), (Start: 17 @10305 has 17 MA's), (22, 10332), (46, 10581),

Gene: Mdavu_15 Start: 10492, Stop: 10908, Start Num: 16

Candidate Starts for Mdavu_15:

(Start: 16 @10492 has 111 MA's), (46, 10768),

Gene: MeaningOfLife_19 Start: 11205, Stop: 11642, Start Num: 16

Candidate Starts for MeaningOfLife_19:

(Start: 5 @11127 has 2 MA's), (Start: 8 @11139 has 10 MA's), (Start: 16 @11205 has 111 MA's), (29, 11262), (39, 11379), (46, 11502), (51, 11568),

Gene: Megsy_19 Start: 11199, Stop: 11639, Start Num: 16

Candidate Starts for Megsy_19:

(Start: 5 @11121 has 2 MA's), (Start: 8 @11133 has 10 MA's), (Start: 16 @11199 has 111 MA's), (29, 11259), (46, 11499), (51, 11565),

Gene: Mercurio_15 Start: 10548, Stop: 11060, Start Num: 11

Candidate Starts for Mercurio_15:

(Start: 11 @10548 has 63 MA's), (52, 11001),

Gene: Milly_15 Start: 9253, Stop: 9702, Start Num: 13

Candidate Starts for Milly_15:

(Start: 8 @9196 has 10 MA's), (Start: 13 @9253 has 30 MA's), (24, 9325), (40, 9475), (41, 9481),

Gene: Miryou_17 Start: 11256, Stop: 11702, Start Num: 15

Candidate Starts for Miryou_17:

(Start: 15 @11256 has 15 MA's), (33, 11340), (37, 11391), (44, 11535),

Gene: MissDaisy_20 Start: 12205, Stop: 12654, Start Num: 13

Candidate Starts for MissDaisy_20:

(Start: 5 @12142 has 2 MA's), (Start: 13 @12205 has 30 MA's), (35, 12304), (38, 12358), (41, 12424),

Gene: Mitti_20 Start: 12354, Stop: 12803, Start Num: 13

Candidate Starts for Mitti_20:

(Start: 5 @12291 has 2 MA's), (Start: 13 @12354 has 30 MA's), (35, 12453), (38, 12507), (41, 12573),

Gene: Mowgli_14 Start: 10569, Stop: 11078, Start Num: 11

Candidate Starts for Mowgli_14:

(Start: 2 @10494 has 5 MA's), (4, 10524), (Start: 11 @10569 has 63 MA's), (37, 10755), (47, 10947), (52, 11019),

Gene: Mufasa_15 Start: 9254, Stop: 9724, Start Num: 13

Candidate Starts for Mufasa_15:

(Start: 8 @9197 has 10 MA's), (Start: 13 @9254 has 30 MA's), (24, 9344), (40, 9497),

Gene: Murucutumbu_19 Start: 11191, Stop: 11625, Start Num: 16

Candidate Starts for Murucutumbu_19:

(Start: 5 @11113 has 2 MA's), (Start: 8 @11125 has 10 MA's), (Start: 16 @11191 has 111 MA's), (37, 11314), (46, 11485), (51, 11551),

Gene: Mynx_19 Start: 11252, Stop: 11689, Start Num: 16

Candidate Starts for Mynx_19:

(Start: 5 @11174 has 2 MA's), (Start: 8 @11186 has 10 MA's), (Start: 16 @11252 has 111 MA's), (29, 11309), (39, 11426), (46, 11549), (51, 11615),

Gene: Nibb_18 Start: 10272, Stop: 10715, Start Num: 16
Candidate Starts for Nibb_18:
(14, 10266), (Start: 16 @10272 has 111 MA's), (46, 10575), (47, 10596),

Gene: Nikao_15 Start: 10504, Stop: 10920, Start Num: 16
Candidate Starts for Nikao_15:
(Start: 16 @10504 has 111 MA's), (46, 10780),

Gene: Niklas_19 Start: 10305, Stop: 10721, Start Num: 17
Candidate Starts for Niklas_19:
(Start: 5 @10227 has 2 MA's), (Start: 17 @10305 has 17 MA's), (22, 10332), (46, 10581),

Gene: Nutello_15 Start: 10504, Stop: 10920, Start Num: 16
Candidate Starts for Nutello_15:
(Start: 16 @10504 has 111 MA's), (46, 10780),

Gene: OctaviousRex_15 Start: 10569, Stop: 11078, Start Num: 11
Candidate Starts for OctaviousRex_15:
(Start: 2 @10494 has 5 MA's), (4, 10524), (Start: 11 @10569 has 63 MA's), (37, 10755), (47, 10947),
(52, 11019),

Gene: OkiRoe_17 Start: 11278, Stop: 11724, Start Num: 15
Candidate Starts for OkiRoe_17:
(Start: 15 @11278 has 15 MA's), (33, 11362), (37, 11413), (44, 11557),

Gene: Olga_14 Start: 10569, Stop: 11078, Start Num: 11
Candidate Starts for Olga_14:
(Start: 2 @10494 has 5 MA's), (4, 10524), (Start: 11 @10569 has 63 MA's), (37, 10755), (47, 10947),
(52, 11019),

Gene: OmniCritical_20 Start: 12342, Stop: 12791, Start Num: 13
Candidate Starts for OmniCritical_20:
(6, 12282), (Start: 13 @12342 has 30 MA's), (35, 12441), (38, 12495), (41, 12561),

Gene: Omnicron_18 Start: 10271, Stop: 10759, Start Num: 8
Candidate Starts for Omnicron_18:
(Start: 8 @10271 has 10 MA's), (Start: 15 @10316 has 15 MA's), (37, 10448), (41, 10529),

Gene: Oscar_18 Start: 10233, Stop: 10676, Start Num: 16
Candidate Starts for Oscar_18:
(Start: 16 @10233 has 111 MA's), (46, 10536),

Gene: Pace1224_14 Start: 10664, Stop: 11215, Start Num: 11
Candidate Starts for Pace1224_14:
(Start: 2 @10592 has 5 MA's), (Start: 11 @10664 has 63 MA's), (36, 10853), (40, 10967), (51, 11129),
(52, 11156),

Gene: Padfoot_19 Start: 11269, Stop: 11706, Start Num: 16
Candidate Starts for Padfoot_19:
(Start: 5 @11191 has 2 MA's), (Start: 8 @11203 has 10 MA's), (Start: 16 @11269 has 111 MA's), (29,
11326), (39, 11443), (46, 11566), (51, 11632),

Gene: Padpat_19 Start: 11229, Stop: 11666, Start Num: 16

Candidate Starts for Padpat_19:

(Start: 5 @11151 has 2 MA's), (Start: 8 @11163 has 10 MA's), (Start: 16 @11229 has 111 MA's), (29, 11286), (39, 11403), (46, 11526), (51, 11592),

Gene: Paito_14 Start: 10684, Stop: 11196, Start Num: 11

Candidate Starts for Paito_14:

(Start: 11 @10684 has 63 MA's), (37, 10873), (40, 10948), (42, 10972), (46, 11044), (52, 11137),

Gene: Paola_17 Start: 11278, Stop: 11724, Start Num: 15

Candidate Starts for Paola_17:

(Start: 15 @11278 has 15 MA's), (33, 11362), (37, 11413), (44, 11557),

Gene: Patt_21 Start: 12181, Stop: 12630, Start Num: 13

Candidate Starts for Patt_21:

(Start: 5 @12118 has 2 MA's), (Start: 13 @12181 has 30 MA's), (35, 12280), (38, 12334), (41, 12400),

Gene: Peanam_19 Start: 10227, Stop: 10721, Start Num: 5

Candidate Starts for Peanam_19:

(Start: 5 @10227 has 2 MA's), (Start: 17 @10305 has 17 MA's), (22, 10332), (46, 10581),

Gene: Peeb_14 Start: 10569, Stop: 11078, Start Num: 11

Candidate Starts for Peeb_14:

(Start: 2 @10494 has 5 MA's), (4, 10524), (Start: 11 @10569 has 63 MA's), (37, 10755), (47, 10947), (52, 11019),

Gene: Peel_19 Start: 11269, Stop: 11706, Start Num: 16

Candidate Starts for Peel_19:

(Start: 5 @11191 has 2 MA's), (Start: 8 @11203 has 10 MA's), (Start: 16 @11269 has 111 MA's), (29, 11326), (39, 11443), (46, 11566), (51, 11632),

Gene: Periodt_14 Start: 10569, Stop: 11078, Start Num: 11

Candidate Starts for Periodt_14:

(Start: 2 @10494 has 5 MA's), (4, 10524), (Start: 11 @10569 has 63 MA's), (37, 10755), (47, 10947), (52, 11019),

Gene: Pharb_18 Start: 11150, Stop: 11599, Start Num: 16

Candidate Starts for Pharb_18:

(Start: 16 @11150 has 111 MA's), (18, 11162), (37, 11288), (44, 11432), (46, 11459), (47, 11480),

Gene: PhelpsODU_18 Start: 10279, Stop: 10701, Start Num: 17

Candidate Starts for PhelpsODU_18:

(Start: 5 @10207 has 2 MA's), (Start: 17 @10279 has 17 MA's), (22, 10312), (37, 10390), (46, 10561),

Gene: Phish_14 Start: 10569, Stop: 11078, Start Num: 11

Candidate Starts for Phish_14:

(Start: 2 @10494 has 5 MA's), (4, 10524), (Start: 11 @10569 has 63 MA's), (37, 10755), (47, 10947), (52, 11019),

Gene: Phrank_18 Start: 10230, Stop: 10652, Start Num: 17

Candidate Starts for Phrank_18:

(Start: 8 @10164 has 10 MA's), (Start: 17 @10230 has 17 MA's), (22, 10263), (37, 10341), (46, 10512),

Gene: Phreak_14 Start: 10569, Stop: 11078, Start Num: 11

Candidate Starts for Phreak_14:

(Start: 2 @10494 has 5 MA's), (4, 10524), (Start: 11 @10569 has 63 MA's), (37, 10755), (47, 10947), (52, 11019),

Gene: Piatt_19 Start: 11269, Stop: 11706, Start Num: 16

Candidate Starts for Piatt_19:

(Start: 5 @11191 has 2 MA's), (Start: 8 @11203 has 10 MA's), (Start: 16 @11269 has 111 MA's), (29, 11326), (39, 11443), (46, 11566), (51, 11632),

Gene: PinkYoshi_14 Start: 10560, Stop: 11069, Start Num: 11

Candidate Starts for PinkYoshi_14:

(Start: 2 @10494 has 5 MA's), (4, 10524), (Start: 11 @10560 has 63 MA's), (37, 10746), (47, 10938), (52, 11010),

Gene: Pinnie_15 Start: 11257, Stop: 11769, Start Num: 11

Candidate Starts for Pinnie_15:

(Start: 2 @11185 has 5 MA's), (Start: 11 @11257 has 63 MA's), (40, 11521), (42, 11545), (51, 11683),

Gene: Pixie_19 Start: 11101, Stop: 11535, Start Num: 16

Candidate Starts for Pixie_19:

(Start: 8 @11038 has 10 MA's), (Start: 16 @11101 has 111 MA's), (19, 11119), (37, 11224), (44, 11368), (46, 11395), (47, 11416),

Gene: Plagueis_14 Start: 10569, Stop: 11078, Start Num: 11

Candidate Starts for Plagueis_14:

(Start: 2 @10494 has 5 MA's), (4, 10524), (Start: 11 @10569 has 63 MA's), (37, 10755), (47, 10947), (52, 11019),

Gene: Pokerus_18 Start: 11186, Stop: 11623, Start Num: 16

Candidate Starts for Pokerus_18:

(Start: 5 @11108 has 2 MA's), (Start: 8 @11120 has 10 MA's), (Start: 16 @11186 has 111 MA's), (29, 11243), (46, 11483), (51, 11549),

Gene: Prithvi_19 Start: 11196, Stop: 11636, Start Num: 16

Candidate Starts for Prithvi_19:

(Start: 5 @11118 has 2 MA's), (Start: 8 @11130 has 10 MA's), (Start: 16 @11196 has 111 MA's), (29, 11256), (46, 11496), (51, 11562),

Gene: Psycho_17 Start: 11206, Stop: 11697, Start Num: 8

Candidate Starts for Psycho_17:

(Start: 8 @11206 has 10 MA's), (Start: 15 @11251 has 15 MA's), (33, 11335), (37, 11386), (41, 11467),

Gene: QuincyRose_18 Start: 11249, Stop: 11686, Start Num: 16

Candidate Starts for QuincyRose_18:

(Start: 5 @11171 has 2 MA's), (Start: 8 @11183 has 10 MA's), (Start: 16 @11249 has 111 MA's), (29, 11306), (46, 11546), (51, 11612),

Gene: Rabbs_14 Start: 10556, Stop: 11068, Start Num: 11

Candidate Starts for Rabbs_14:

(Start: 11 @10556 has 63 MA's), (40, 10820), (52, 11009),

Gene: Ramen_19 Start: 11232, Stop: 11669, Start Num: 16

Candidate Starts for Ramen_19:

(Start: 5 @11154 has 2 MA's), (Start: 8 @11166 has 10 MA's), (Start: 16 @11232 has 111 MA's), (29, 11289), (39, 11406), (46, 11529), (51, 11595),

Gene: Rando14_17 Start: 10173, Stop: 10661, Start Num: 8

Candidate Starts for Rando14_17:

(Start: 8 @10173 has 10 MA's), (Start: 15 @10218 has 15 MA's), (33, 10299), (37, 10350), (41, 10431),

Gene: Rapunzel97_19 Start: 11233, Stop: 11670, Start Num: 16

Candidate Starts for Rapunzel97_19:

(Start: 5 @11155 has 2 MA's), (Start: 8 @11167 has 10 MA's), (Start: 16 @11233 has 111 MA's), (29, 11290), (39, 11407), (46, 11530), (51, 11596),

Gene: Remy19_14 Start: 10494, Stop: 11078, Start Num: 2

Candidate Starts for Remy19_14:

(Start: 2 @10494 has 5 MA's), (4, 10524), (Start: 11 @10569 has 63 MA's), (37, 10755), (47, 10947), (52, 11019),

Gene: Renaissance_14 Start: 10569, Stop: 11078, Start Num: 11

Candidate Starts for Renaissance_14:

(Start: 2 @10494 has 5 MA's), (4, 10524), (Start: 11 @10569 has 63 MA's), (37, 10755), (47, 10947), (52, 11019),

Gene: Reptar3000_20 Start: 12183, Stop: 12632, Start Num: 13

Candidate Starts for Reptar3000_20:

(Start: 5 @12120 has 2 MA's), (Start: 13 @12183 has 30 MA's), (35, 12282), (38, 12336), (41, 12402),

Gene: Richo_19 Start: 10305, Stop: 10721, Start Num: 17

Candidate Starts for Richo_19:

(Start: 5 @10227 has 2 MA's), (Start: 17 @10305 has 17 MA's), (22, 10332), (46, 10581),

Gene: Rosmarinus_19 Start: 11257, Stop: 11694, Start Num: 16

Candidate Starts for Rosmarinus_19:

(Start: 5 @11179 has 2 MA's), (Start: 8 @11191 has 10 MA's), (Start: 16 @11257 has 111 MA's), (29, 11314), (39, 11431), (46, 11554), (51, 11620),

Gene: Ruthiejr_19 Start: 12034, Stop: 12486, Start Num: 13

Candidate Starts for Ruthiejr_19:

(Start: 13 @12034 has 30 MA's), (26, 12103), (37, 12178), (38, 12190), (41, 12256), (52, 12439),

Gene: SamScheppers_18 Start: 11957, Stop: 12406, Start Num: 13

Candidate Starts for SamScheppers_18:

(Start: 5 @11894 has 2 MA's), (Start: 13 @11957 has 30 MA's), (35, 12056), (38, 12110), (41, 12176),

Gene: SamuelLPlaqson_19 Start: 11173, Stop: 11613, Start Num: 16

Candidate Starts for SamuelLPlaqson_19:

(Start: 5 @11095 has 2 MA's), (Start: 8 @11107 has 10 MA's), (12, 11134), (Start: 16 @11173 has 111 MA's), (46, 11473), (51, 11539),

Gene: Scarlett_18 Start: 10232, Stop: 10675, Start Num: 16

Candidate Starts for Scarlett_18:
(Start: 16 @10232 has 111 MA's), (23, 10286), (46, 10535),

Gene: Schiebel_14 Start: 10569, Stop: 11078, Start Num: 11
Candidate Starts for Schiebel_14:
(Start: 2 @10494 has 5 MA's), (4, 10524), (Start: 11 @10569 has 63 MA's), (37, 10755), (47, 10947),
(52, 11019),

Gene: SgtBeansprout_15 Start: 10504, Stop: 10920, Start Num: 16
Candidate Starts for SgtBeansprout_15:
(Start: 16 @10504 has 111 MA's), (46, 10780),

Gene: ShaboiShabazz_14 Start: 10569, Stop: 11078, Start Num: 11
Candidate Starts for ShaboiShabazz_14:
(Start: 2 @10494 has 5 MA's), (4, 10524), (Start: 11 @10569 has 63 MA's), (37, 10755), (47, 10947),
(52, 11019),

Gene: Shadow1_17 Start: 10121, Stop: 10543, Start Num: 17
Candidate Starts for Shadow1_17:
(Start: 17 @10121 has 17 MA's), (32, 10175), (37, 10229), (46, 10400),

Gene: Shaobing_19 Start: 10305, Stop: 10721, Start Num: 17
Candidate Starts for Shaobing_19:
(Start: 5 @10227 has 2 MA's), (Start: 17 @10305 has 17 MA's), (22, 10332), (46, 10581),

Gene: ShedlockHolmes_18 Start: 11349, Stop: 11783, Start Num: 16
Candidate Starts for ShedlockHolmes_18:
(Start: 8 @11286 has 10 MA's), (Start: 16 @11349 has 111 MA's), (19, 11367), (37, 11472), (44,
11616), (46, 11643), (47, 11664),

Gene: ShiaSurprise_19 Start: 11269, Stop: 11706, Start Num: 16
Candidate Starts for ShiaSurprise_19:
(Start: 5 @11191 has 2 MA's), (Start: 8 @11203 has 10 MA's), (Start: 16 @11269 has 111 MA's), (29,
11326), (39, 11443), (46, 11566), (51, 11632),

Gene: SirPhilip_18 Start: 10000, Stop: 10446, Start Num: 16
Candidate Starts for SirPhilip_18:
(Start: 5 @9922 has 2 MA's), (Start: 16 @10000 has 111 MA's), (37, 10135), (46, 10306), (48, 10333),

Gene: Sizemore_14 Start: 10570, Stop: 11079, Start Num: 11
Candidate Starts for Sizemore_14:
(Start: 2 @10495 has 5 MA's), (4, 10525), (Start: 11 @10570 has 63 MA's), (37, 10756), (47, 10948),
(52, 11020),

Gene: Slarp_21 Start: 12441, Stop: 12890, Start Num: 13
Candidate Starts for Slarp_21:
(Start: 5 @12378 has 2 MA's), (Start: 13 @12441 has 30 MA's), (35, 12540), (38, 12594), (41, 12660),

Gene: Slimphazie_19 Start: 11233, Stop: 11670, Start Num: 16
Candidate Starts for Slimphazie_19:
(Start: 5 @11155 has 2 MA's), (Start: 8 @11167 has 10 MA's), (Start: 16 @11233 has 111 MA's), (29,
11290), (39, 11407), (46, 11530), (51, 11596),

Gene: Sneeze_14 Start: 10555, Stop: 11067, Start Num: 11

Candidate Starts for Sneeze_14:

(Start: 11 @10555 has 63 MA's), (40, 10819), (52, 11008),

Gene: SoSeph_17 Start: 11405, Stop: 11851, Start Num: 15

Candidate Starts for SoSeph_17:

(Start: 15 @11405 has 15 MA's), (33, 11489), (37, 11540), (44, 11684),

Gene: Spock_19 Start: 11269, Stop: 11706, Start Num: 16

Candidate Starts for Spock_19:

(Start: 5 @11191 has 2 MA's), (Start: 8 @11203 has 10 MA's), (Start: 16 @11269 has 111 MA's), (29, 11326), (39, 11443), (46, 11566), (51, 11632),

Gene: Stargaze_14 Start: 10778, Stop: 11371, Start Num: 1

Candidate Starts for Stargaze_14:

(1, 10778), (Start: 11 @10865 has 63 MA's), (40, 11123), (42, 11147), (43, 11165), (51, 11285),

Gene: Stinson_19 Start: 11203, Stop: 11637, Start Num: 16

Candidate Starts for Stinson_19:

(Start: 5 @11125 has 2 MA's), (Start: 8 @11137 has 10 MA's), (Start: 16 @11203 has 111 MA's), (37, 11326), (46, 11497), (51, 11563),

Gene: Strobilo_15 Start: 9253, Stop: 9702, Start Num: 13

Candidate Starts for Strobilo_15:

(Start: 8 @9196 has 10 MA's), (Start: 13 @9253 has 30 MA's), (24, 9325), (40, 9475), (41, 9481),

Gene: Sulley_19 Start: 11202, Stop: 11639, Start Num: 16

Candidate Starts for Sulley_19:

(Start: 5 @11124 has 2 MA's), (Start: 8 @11136 has 10 MA's), (Start: 16 @11202 has 111 MA's), (29, 11259), (46, 11499), (51, 11565),

Gene: Sunflower1121_17 Start: 10132, Stop: 10554, Start Num: 17

Candidate Starts for Sunflower1121_17:

(Start: 17 @10132 has 17 MA's), (32, 10186), (37, 10240), (46, 10411),

Gene: Sweets_14 Start: 10564, Stop: 11073, Start Num: 11

Candidate Starts for Sweets_14:

(Start: 2 @10489 has 5 MA's), (4, 10519), (Start: 11 @10564 has 63 MA's), (37, 10750), (47, 10942), (52, 11014),

Gene: Syra333_18 Start: 10227, Stop: 10649, Start Num: 17

Candidate Starts for Syra333_18:

(Start: 8 @10164 has 10 MA's), (Start: 17 @10227 has 17 MA's), (32, 10281), (37, 10335), (46, 10506),

Gene: TBond007_18 Start: 11100, Stop: 11534, Start Num: 16

Candidate Starts for TBond007_18:

(Start: 8 @11037 has 10 MA's), (Start: 16 @11100 has 111 MA's), (19, 11118), (37, 11223), (44, 11367), (46, 11394), (47, 11415),

Gene: TClif_18 Start: 10225, Stop: 10647, Start Num: 17

Candidate Starts for TClif_18:

(Start: 8 @10156 has 10 MA's), (10, 10168), (Start: 17 @10225 has 17 MA's), (46, 10507),

Gene: TM4_15 Start: 9314, Stop: 9763, Start Num: 13

Candidate Starts for TM4_15:

(Start: 13 @9314 has 30 MA's), (24, 9383), (40, 9536),

Gene: Tachez_19 Start: 11195, Stop: 11632, Start Num: 16

Candidate Starts for Tachez_19:

(Start: 5 @11117 has 2 MA's), (Start: 8 @11129 has 10 MA's), (Start: 16 @11195 has 111 MA's), (29, 11252), (39, 11369), (46, 11492), (51, 11558),

Gene: Taheera_14 Start: 10568, Stop: 11080, Start Num: 11

Candidate Starts for Taheera_14:

(Start: 11 @10568 has 63 MA's), (40, 10832), (52, 11021),

Gene: TaiwanKao_20 Start: 11202, Stop: 11642, Start Num: 16

Candidate Starts for TaiwanKao_20:

(Start: 5 @11124 has 2 MA's), (Start: 8 @11136 has 10 MA's), (Start: 16 @11202 has 111 MA's), (29, 11262), (46, 11502), (51, 11568),

Gene: Taquito_18 Start: 12025, Stop: 12477, Start Num: 13

Candidate Starts for Taquito_18:

(Start: 13 @12025 has 30 MA's), (26, 12094), (37, 12169), (38, 12181), (41, 12247), (52, 12430),

Gene: Terror_14 Start: 10568, Stop: 11080, Start Num: 11

Candidate Starts for Terror_14:

(Start: 11 @10568 has 63 MA's), (40, 10832), (52, 11021),

Gene: Thyatira_17 Start: 11277, Stop: 11723, Start Num: 15

Candidate Starts for Thyatira_17:

(Start: 15 @11277 has 15 MA's), (30, 11349), (33, 11361), (37, 11412), (44, 11556),

Gene: Tierra_18 Start: 10951, Stop: 11373, Start Num: 17

Candidate Starts for Tierra_18:

(Start: 8 @10885 has 10 MA's), (Start: 17 @10951 has 17 MA's), (22, 10984), (37, 11062), (46, 11233),

Gene: TingHuaYa_19 Start: 10264, Stop: 10677, Start Num: 17

Candidate Starts for TingHuaYa_19:

(Start: 8 @10198 has 10 MA's), (Start: 17 @10264 has 17 MA's), (32, 10312), (46, 10537),

Gene: TiniBug_19 Start: 11173, Stop: 11613, Start Num: 16

Candidate Starts for TiniBug_19:

(Start: 5 @11095 has 2 MA's), (Start: 8 @11107 has 10 MA's), (12, 11134), (Start: 16 @11173 has 111 MA's), (46, 11473), (51, 11539),

Gene: Tiri_19 Start: 11241, Stop: 11678, Start Num: 16

Candidate Starts for Tiri_19:

(Start: 5 @11163 has 2 MA's), (Start: 8 @11175 has 10 MA's), (Start: 16 @11241 has 111 MA's), (29, 11298), (46, 11538), (51, 11604),

Gene: TomBrady_14 Start: 10570, Stop: 11079, Start Num: 11

Candidate Starts for TomBrady_14:

(Start: 2 @10495 has 5 MA's), (4, 10525), (Start: 11 @10570 has 63 MA's), (37, 10756), (47, 10948), (52, 11020),

Gene: Topper_19 Start: 11269, Stop: 11706, Start Num: 16

Candidate Starts for Topper_19:

(Start: 5 @11191 has 2 MA's), (Start: 8 @11203 has 10 MA's), (Start: 16 @11269 has 111 MA's), (29, 11326), (39, 11443), (46, 11566), (51, 11632),

Gene: Torres_15 Start: 10504, Stop: 10920, Start Num: 16

Candidate Starts for Torres_15:

(Start: 16 @10504 has 111 MA's), (46, 10780),

Gene: TreyKay_19 Start: 11196, Stop: 11636, Start Num: 16

Candidate Starts for TreyKay_19:

(Start: 5 @11118 has 2 MA's), (Start: 8 @11130 has 10 MA's), (Start: 16 @11196 has 111 MA's), (29, 11256), (46, 11496), (51, 11562),

Gene: TribbleTrouble_17 Start: 11167, Stop: 11592, Start Num: 16

Candidate Starts for TribbleTrouble_17:

(Start: 16 @11167 has 111 MA's), (37, 11281), (44, 11425), (45, 11443), (46, 11452), (47, 11473),

Gene: TruffulaTree_19 Start: 11229, Stop: 11666, Start Num: 16

Candidate Starts for TruffulaTree_19:

(Start: 5 @11151 has 2 MA's), (Start: 8 @11163 has 10 MA's), (Start: 16 @11229 has 111 MA's), (29, 11286), (39, 11403), (46, 11526), (51, 11592),

Gene: Twitch_19 Start: 11269, Stop: 11706, Start Num: 16

Candidate Starts for Twitch_19:

(Start: 5 @11191 has 2 MA's), (Start: 8 @11203 has 10 MA's), (Start: 16 @11269 has 111 MA's), (29, 11326), (39, 11443), (46, 11566), (51, 11632),

Gene: Unicorn_18 Start: 10279, Stop: 10701, Start Num: 17

Candidate Starts for Unicorn_18:

(Start: 5 @10207 has 2 MA's), (Start: 17 @10279 has 17 MA's), (22, 10312), (37, 10390), (46, 10561),

Gene: Urkel_19 Start: 11173, Stop: 11613, Start Num: 16

Candidate Starts for Urkel_19:

(Start: 5 @11095 has 2 MA's), (Start: 8 @11107 has 10 MA's), (12, 11134), (Start: 16 @11173 has 111 MA's), (46, 11473), (51, 11539),

Gene: Validus_19 Start: 10149, Stop: 10643, Start Num: 5

Candidate Starts for Validus_19:

(Start: 5 @10149 has 2 MA's), (Start: 17 @10230 has 17 MA's), (22, 10254), (36, 10293), (46, 10503),

Gene: Veliki_19 Start: 11269, Stop: 11706, Start Num: 16

Candidate Starts for Veliki_19:

(Start: 5 @11191 has 2 MA's), (Start: 8 @11203 has 10 MA's), (Start: 16 @11269 has 111 MA's), (29, 11326), (39, 11443), (46, 11566), (51, 11632),

Gene: Waterfoul_17 Start: 11299, Stop: 11745, Start Num: 15

Candidate Starts for Waterfoul_17:

(Start: 15 @11299 has 15 MA's), (30, 11371), (33, 11383), (37, 11434), (44, 11578),

Gene: Wendigo_14 Start: 10569, Stop: 11078, Start Num: 11

Candidate Starts for Wendigo_14:

(Start: 2 @10494 has 5 MA's), (4, 10524), (Start: 11 @10569 has 63 MA's), (37, 10755), (47, 10947), (52, 11019),

Gene: Wintermute_20 Start: 12430, Stop: 12879, Start Num: 13

Candidate Starts for Wintermute_20:

(Start: 5 @12367 has 2 MA's), (Start: 13 @12430 has 30 MA's), (35, 12529), (38, 12583), (41, 12649),

Gene: Ximenita_19 Start: 10406, Stop: 10828, Start Num: 17

Candidate Starts for Ximenita_19:

(Start: 17 @10406 has 17 MA's), (22, 10436), (32, 10460), (37, 10514), (46, 10685),

Gene: Y10_20 Start: 12430, Stop: 12879, Start Num: 13

Candidate Starts for Y10_20:

(Start: 5 @12367 has 2 MA's), (Start: 13 @12430 has 30 MA's), (35, 12529), (38, 12583), (41, 12649),

Gene: Y2_20 Start: 12430, Stop: 12879, Start Num: 13

Candidate Starts for Y2_20:

(Start: 5 @12367 has 2 MA's), (Start: 13 @12430 has 30 MA's), (35, 12529), (38, 12583), (41, 12649),

Gene: YoureAdopted_18 Start: 11202, Stop: 11639, Start Num: 16

Candidate Starts for YoureAdopted_18:

(Start: 5 @11124 has 2 MA's), (Start: 8 @11136 has 10 MA's), (Start: 16 @11202 has 111 MA's), (29, 11259), (39, 11376), (46, 11499), (51, 11565),

Gene: Yuna_19 Start: 10337, Stop: 10783, Start Num: 16

Candidate Starts for Yuna_19:

(Start: 16 @10337 has 111 MA's), (37, 10472), (46, 10643), (53, 10763),

Gene: Yunkel11_19 Start: 10187, Stop: 10600, Start Num: 17

Candidate Starts for Yunkel11_19:

(Start: 8 @10121 has 10 MA's), (Start: 17 @10187 has 17 MA's), (22, 10211), (32, 10235), (46, 10460),

Gene: Zabiza_19 Start: 11230, Stop: 11667, Start Num: 16

Candidate Starts for Zabiza_19:

(Start: 5 @11152 has 2 MA's), (Start: 8 @11164 has 10 MA's), (Start: 16 @11230 has 111 MA's), (29, 11287), (39, 11404), (46, 11527), (51, 11593),

Gene: Zavala_19 Start: 11210, Stop: 11647, Start Num: 16

Candidate Starts for Zavala_19:

(Start: 5 @11132 has 2 MA's), (Start: 8 @11144 has 10 MA's), (Start: 16 @11210 has 111 MA's), (29, 11267), (39, 11384), (46, 11507), (51, 11573),

Gene: ZoMa_14 Start: 10569, Stop: 11078, Start Num: 11

Candidate Starts for ZoMa_14:

(Start: 2 @10494 has 5 MA's), (4, 10524), (Start: 11 @10569 has 63 MA's), (37, 10755), (47, 10947), (52, 11019),

Gene: ZoeJ_15 Start: 9211, Stop: 9663, Start Num: 13

Candidate Starts for ZoeJ_15:

(Start: 8 @9154 has 10 MA's), (9, 9166), (Start: 13 @9211 has 30 MA's), (24, 9283), (40, 9436),

Gene: Zombie_14 Start: 10569, Stop: 11078, Start Num: 11

Candidate Starts for Zombie_14:

(Start: 2 @10494 has 5 MA's), (4, 10524), (Start: 11 @10569 has 63 MA's), (37, 10755), (47, 10947),
(52, 11019),