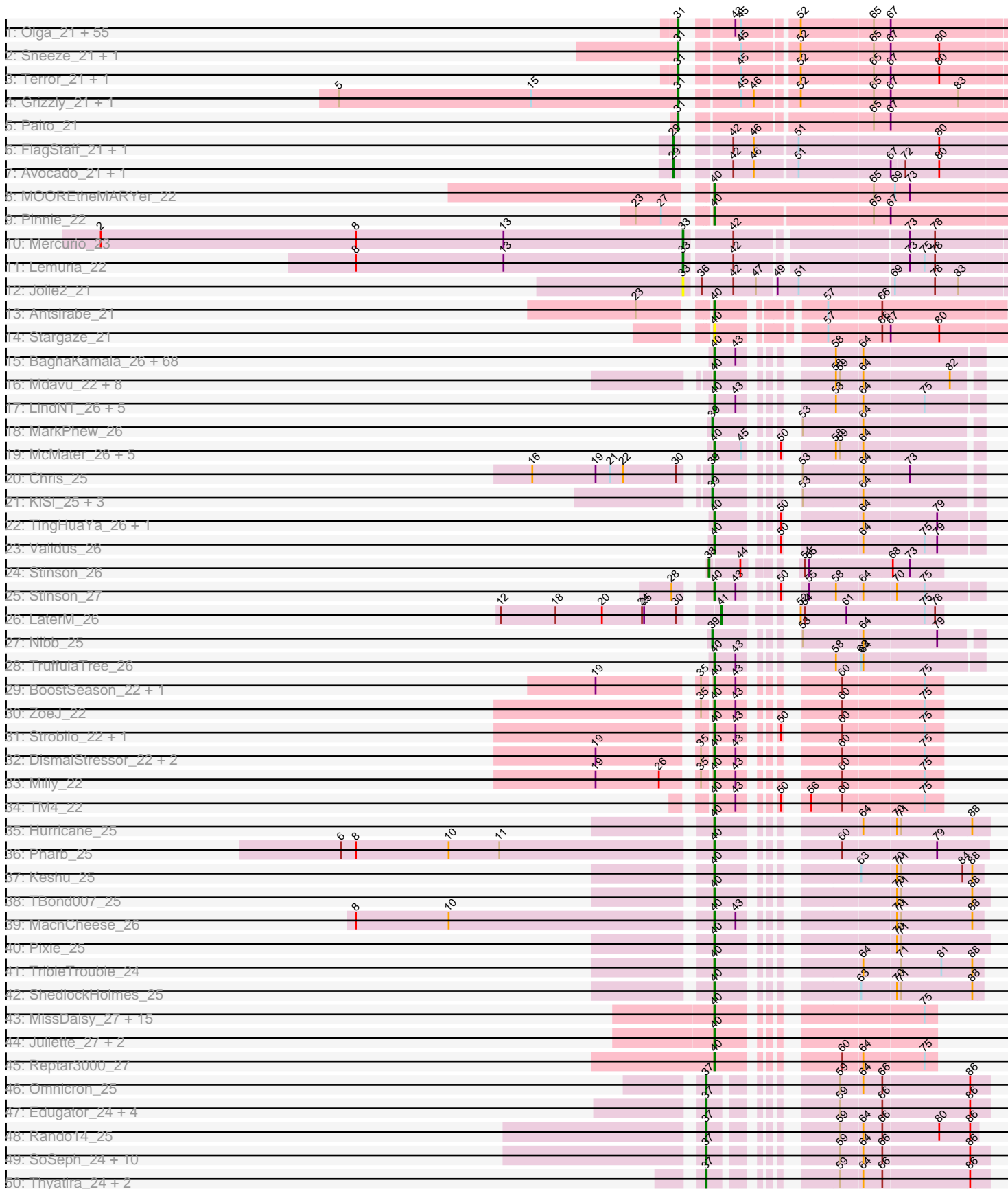
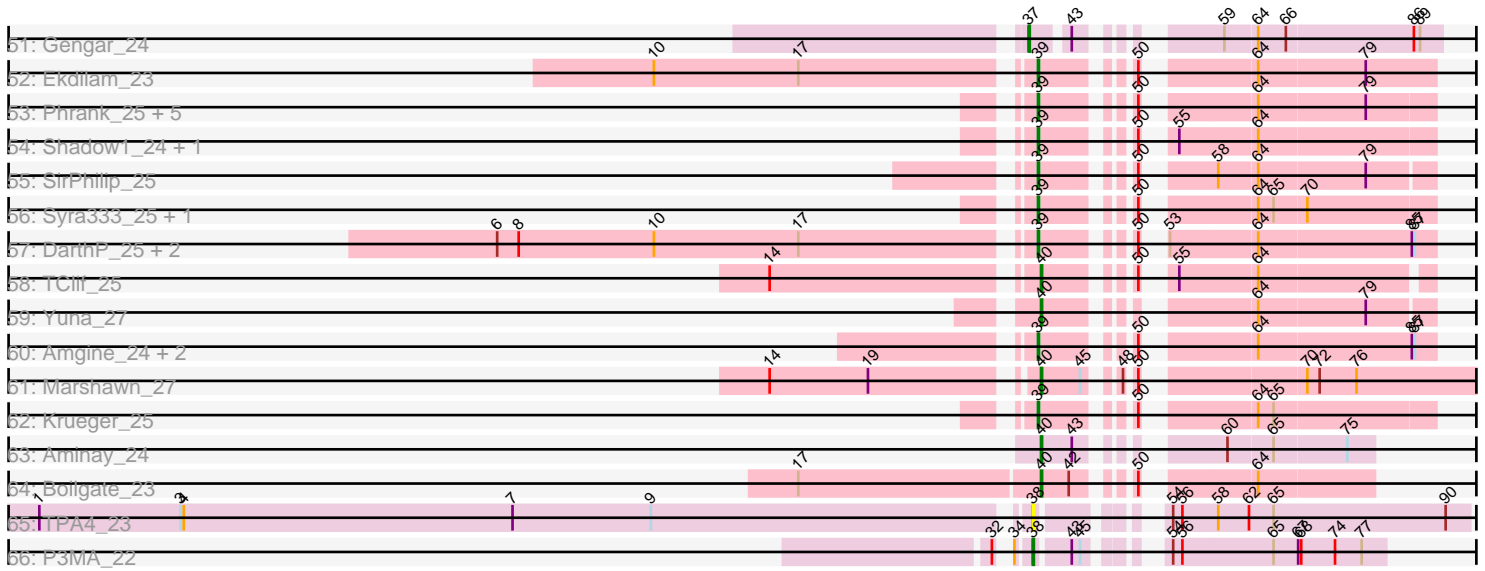


Pham 196258



Pham 196258



Note: Tracks are now grouped by subcluster and scaled. Switching in subcluster is indicated by changes in track color. Track scale is now set by default to display the region 30 bp upstream of start 1 to 30 bp downstream of the last possible start. If this default region is judged to be packed too tightly with annotated starts, the track will be further scaled to only show that region of the ORF with annotated starts. This action will be indicated by adding "Zoomed" to the title. For starts, yellow indicates the location of called starts comprised solely of Glimmer/GeneMark auto-annotations, green indicates the location of called starts with at least 1 manual gene annotation.

Pham 196258 Report

This analysis was run 12/09/24 on database version 580.

Pham number 196258 has 264 members, 14 are drafts.

Phages represented in each track:

- Track 1 : Olga_21, Halo_21, DNAll_0021, Jolene_21, BPs_21, AzulaCat_21, BruceB_21, Angel_21, Aroostook_21, Crespo_21, Cedasite_21, Sweets_21, ECartman_21, Plagueis_21, GoldenAsh_21, Annihilator_21, Zombie_21, Maliketh_21, Hope_21, Kareem_21, Peeb_21, OctaviousRex_21, Frosty24_21, Cherrybomb426_21, Chance64_21, Gideon_21, DMoney_21, LouisV14_21, Camri_21, Renaissance_21, BQuat_21, ShaboiShabazz_21, Liefie_21, TomBrady_21, Mowgli_21, Coleslaw_21, Jonghyun_21, Gomashi_21, Kasen3_21, Marmie_21, Sizemore_21, PinkYoshi_21, Hotshotbaby7_21, Darionha_21, JorRay_21, Phish_21, Phreak_21, Jane_21, Remy19_21, Periodt_21, CassieYates_21, CLED96_21, Avrafan_21, ZoMa_21, Schiebel_21, Wendigo_21
- Track 2 : Sneeze_21, Rabbs_21
- Track 3 : Terror_21, Taheera_21
- Track 4 : Grizzly_21, Barkley26_21
- Track 5 : Paito_21
- Track 6 : FlagStaff_21, Pace1224_21
- Track 7 : Avocado_21, Cambiare_22
- Track 8 : MOOREtheMARYer_22
- Track 9 : Pinnie_22
- Track 10 : Mercurio_23
- Track 11 : Lemuria_22
- Track 12 : Jolie2_21
- Track 13 : Antsirabe_21
- Track 14 : Stargaze_21
- Track 15 : BaghaKamala_26, Durfee_26, Apocalypse_26, Sulley_26, BarrelRoll_26, Efra2_26, Slimphazie_26, Murucutumbu_26, CrimD_26, Boiiii_26, Pokerus_25, YoureAdopted_25, Joy99_26, Dole_26, Belladonna_26, Peel_26, CheetoDust_26, Jarvi_26, Adonis_26, Piatt_26, Adephagia_26, Blizzard_26, Padfoot_26, Angelica_26, Zavala_26, Topper_26, HedwigODU_26, Jayhawk_26, Dalmuri_26, Mynx_26, Asayake_26, Inky_26, JAWS_26, Illumine_26, Guanica15_26, Capricorn_26, Jeckyll_26, BGlluviae_26, Spock_26, Curiosium_27, CREW_26, MeaningOfLife_26, Ganymede_27, ActinUp_26, CaseJules_26, Veliki_26, AlishaPH_26, Padpat_26, Beezoo_26, Yunkel11_26, Twitch_26, Rosmarinus_26, Devera_26, Zabiza_26, Emerson_26, Atiba_26, Geraldini_26, Tiri_26, Ramen_26, Rapunzel97_26, Hyperbowlee_26, Homura_26, BEEST_26, Tachez_26, QuincyRose_25, Deby_26, ShiaSurprise_26, Llorens_26, Lunahalos_26
- Track 16 : Mdavu_22, Enkosi_22, Binglebops_22, LilPharaoh_22, Amelie_22, Nikao_22, Nutello_22, SgtBeansprout_22, Torres_22

- Track 17 : LindNT_26, Anaya_27, TreyKay_26, TaiwanKao_27, Prithvi_26, Megsy_26
- Track 18 : MarkPhew_26
- Track 19 : McMater_26, Peanam_26, Niklas_26, Dartin_26, Richo_26, Shaobing_26
- Track 20 : Chris_25
- Track 21 : KiSi_25, LeMond_25, Oscar_25, Scarlett_25
- Track 22 : TingHuaYa_26, LastHope_26
- Track 23 : Validus_26
- Track 24 : Stinson_26
- Track 25 : Stinson_27
- Track 26 : LaterM_26
- Track 27 : Nibb_25
- Track 28 : TruffulaTree_26
- Track 29 : BoostSeason_22, Mufasa_22
- Track 30 : ZoeJ_22
- Track 31 : Strobilo_22, Findley_22
- Track 32 : DismalStressor_22, Marcoliusprime_22, DismalFunk_22
- Track 33 : Milly_22
- Track 34 : TM4_22
- Track 35 : Hurricane_25
- Track 36 : Pharb_25
- Track 37 : Keshu_25
- Track 38 : TBond007_25
- Track 39 : MacnCheese_26
- Track 40 : Pixie_25
- Track 41 : TribbleTrouble_24
- Track 42 : ShedlockHolmes_25
- Track 43 : MissDaisy_27, Wintermute_27, Chancellor_27, Patt_27, Mitti_27, Fionnbharth_27, SamScheppers_25, JF1_27, Slarp_27, Y2_27, Cheetobro_27, OmniCritical_27, Kraw_28, Malthus_28, Taquito_25, Y10_27
- Track 44 : Juliette_27, Ruthiejr_26, Eponine_27
- Track 45 : Reptar3000_27
- Track 46 : Omnicron_25
- Track 47 : Edugator_24, Larva_25, Dadosky_25, Psycho_25, AlleyCat_25
- Track 48 : Rando14_25
- Track 49 : SoSeph_24, Leston_24, Heftyboy_24, Guillsminger_24, OkiRoe_24, Collard_24, Kratio_23, InvictusManeo_24, Agent47_24, Feyre_24, Paola_24
- Track 50 : Thyatira_24, Waterfoul_24, Miryou_24
- Track 51 : Gengar_24
- Track 52 : Ekdilam_23
- Track 53 : Phrank_25, Bryler_25, Tierra_25, PhelpsODU_25, Cain_25, Unicorn_25
- Track 54 : Shadow1_24, Sunflower1121_24
- Track 55 : SirPhilip_25
- Track 56 : Syra333_25, Ximenita_26
- Track 57 : DarthP_25, Hammy_25, Amohnition_25
- Track 58 : TClif_25
- Track 59 : Yuna_27
- Track 60 : Amgine_24, Ellie_23, Fefferhead_25
- Track 61 : Marshawn_27
- Track 62 : Krueger_25
- Track 63 : Aminay_24
- Track 64 : Boilgate_23
- Track 65 : TPA4_23

- Track 66 : P3MA_22

Summary of Final Annotations (See graph section above for start numbers):

The start number called the most often in the published annotations is 40, it was called in 134 of the 250 non-draft genes in the pham.

Genes that call this "Most Annotated" start:

- ActinUp_26, Adephegia_26, Adonis_26, AlishaPH_26, Amelie_22, Aminay_24, Anaya_27, Angelica_26, Antsirabe_21, Apocalypse_26, Asayake_26, Atiba_26, BEEST_26, BGlluviae_26, BaghaKamala_26, BarrelRoll_26, Beezoo_26, Belladonna_26, Biglebops_22, Blizzard_26, Boiiii_26, Boilgate_23, BoostSeason_22, CREW_26, Capricorn_26, CaseJules_26, Chancellor_27, CheetoDust_26, Cheetobro_27, CrimD_26, Curiosium_27, Dalmuri_26, Dartin_26, Deby_26, Devera_26, DismalFunk_22, DismalStressor_22, Dole_26, Durfee_26, Efra2_26, Emerson_26, Enkosi_22, Eponine_27, Findley_22, Fionnbharth_27, Ganymede_27, Geraldini_26, Guanica15_26, HedwigODU_26, Homura_26, Hurricane_25, Hyperbowlee_26, Illumine_26, Inky_26, JAWS_26, JF1_27, Jarvi_26, Jayhawk_26, Jeckyll_26, Joy99_26, Juliette_27, Keshu_25, Kraw_28, LastHope_26, LilPharaoh_22, LindNT_26, Llorens_26, Lunahalos_26, MOOREtheMARYer_22, MacnCheese_26, Malthus_28, Marcoliusprime_22, Marshawn_27, McMater_26, Mdavu_22, MeaningOfLife_26, Megsy_26, Milly_22, MissDaisy_27, Mitti_27, Mufasa_22, Murucutumbu_26, Mynx_26, Nikao_22, Niklas_26, Nutello_22, OmniCritical_27, Padfoot_26, Padpat_26, Patt_27, Peanam_26, Peel_26, Pharb_25, Piatt_26, Pinnie_22, Pixie_25, Pokerus_25, Prithvi_26, QuincyRose_25, Ramen_26, Rapunzel97_26, Reptar3000_27, Richo_26, Rosmarinus_26, Ruthiejr_26, SamScheppers_25, SgtBeansprout_22, Shaobing_26, ShedlockHolmes_25, ShiaSurprise_26, Slarp_27, Slimphazie_26, Spock_26, Stargaze_21, Stinson_27, Strobilo_22, Sulley_26, TBond007_25, TClif_25, TM4_22, Tachez_26, TaiwanKao_27, Taquito_25, TingHuaYa_26, Tiri_26, Topper_26, Torres_22, TreyKay_26, TribbleTrouble_24, TruffulaTree_26, Twitch_26, Validus_26, Veliki_26, Wintermute_27, Y10_27, Y2_27, YoureAdopted_25, Yuna_27, Yunkel11_26, Zabiza_26, Zavala_26, ZoeJ_22,

Genes that have the "Most Annotated" start but do not call it:

-

Genes that do not have the "Most Annotated" start:

- Agent47_24, AlleyCat_25, Amgine_24, Amohnition_25, Angel_21, Annihilator_21, Aroostook_21, Avocado_21, Avrafan_21, AzulaCat_21, BPs_21, BQuat_21, Barkley26_21, BruceB_21, Bryler_25, CLED96_21, Cain_25, Cambiare_22, Camri_21, CassieYates_21, Cedasite_21, Chance64_21, Cherrybomb426_21, Chris_25, Coleslaw_21, Collard_24, Crespo_21, DMoney_21, DNAlll_0021, Dadosky_25, Darionha_21, DarthP_25, ECartman_21, Edugator_24, Ekdilam_23, Ellie_23, Fefferhead_25, Feyre_24, FlagStaff_21, Frosty24_21, Gengar_24, Gideon_21, GoldenAsh_21, Gomashi_21, Grizzly_21, Guillsminger_24, Halo_21, Hammy_25, Heftyboy_24, Hope_21, Hotshotbaby7_21, InvictusManeo_24, Jane_21, Jolene_21, Jolie2_21, Jonghyun_21, JorRay_21, Kareem_21, Kasen3_21, KiSi_25, Kratio_23, Krueger_25, Larva_25, LaterM_26, LeMond_25, Lemuria_22, Leston_24, Liefie_21, LouisV14_21, Maliketh_21, MarkPhew_26, Marmie_21, Mercurio_23,

Miryou_24, Mowgli_21, Nibb_25, OctaviousRex_21, OkiRoe_24, Olga_21, Omnicron_25, Oscar_25, P3MA_22, Pace1224_21, Paito_21, Paola_24, Peeb_21, Periodt_21, PhelpsODU_25, Phish_21, Phrank_25, Phreak_21, PinkYoshi_21, Plagueis_21, Psycho_25, Rabbs_21, Rando14_25, Remy19_21, Renaissance_21, Scarlett_25, Schiebel_21, ShaboiShabazz_21, Shadow1_24, SirPhilip_25, Sizemore_21, Sneeze_21, SoSeph_24, Stinson_26, Sunflower1121_24, Sweets_21, Syra333_25, TPA4_23, Taheera_21, Terror_21, Thyatira_24, Tierra_25, TomBrady_21, Unicorn_25, Waterfoul_24, Wendigo_21, Ximenita_26, ZoMa_21, Zombie_21,

Summary by start number:

Start 29:

- Found in 4 of 264 (1.5%) of genes in pham
- Manual Annotations of this start: 3 of 250
- Called 100.0% of time when present
- Phage (with cluster) where this start called: Avocado_21 (G2), Cambiare_22 (G2), FlagStaff_21 (G2), Pace1224_21 (G2),

Start 31:

- Found in 63 of 264 (23.9%) of genes in pham
- Manual Annotations of this start: 60 of 250
- Called 100.0% of time when present
- Phage (with cluster) where this start called: Angel_21 (G1), Annihilator_21 (G1), Aroostook_21 (G1), Avrafan_21 (G1), AzulaCat_21 (G1), BPs_21 (G1), BQuat_21 (G1), Barkley26_21 (G1), BruceB_21 (G1), CLED96_21 (G1), Camri_21 (G1), CassieYates_21 (G1), Cedasite_21 (G1), Chance64_21 (G1), Cherrybomb426_21 (G1), Coleslaw_21 (G1), Crespo_21 (G1), DMoney_21 (G1), DNAllI_0021 (G1), Darionha_21 (G1), ECartman_21 (G1), Frosty24_21 (G1), Gideon_21 (G1), GoldenAsh_21 (G1), Gomashi_21 (G1), Grizzly_21 (G1), Halo_21 (G1), Hope_21 (G1), Hotshotbaby7_21 (G1), Jane_21 (G1), Jolene_21 (G1), Jonghyun_21 (G1), JorRay_21 (G1), Kareem_21 (G1), Kasen3_21 (G1), Liefie_21 (G1), LouisV14_21 (G1), Maliketh_21 (G1), Marmie_21 (G1), Mowgli_21 (G1), OctaviousRex_21 (G1), Olga_21 (G1), Paito_21 (G1), Peeb_21 (G1), Periodt_21 (G1), Phish_21 (G1), Phreak_21 (G1), PinkYoshi_21 (G1), Plagueis_21 (G1), Rabbs_21 (G1), Remy19_21 (G1), Renaissance_21 (G1), Schiebel_21 (G1), ShaboiShabazz_21 (G1), Sizemore_21 (G1), Sneeze_21 (G1), Sweets_21 (G1), Taheera_21 (G1), Terror_21 (G1), TomBrady_21 (G1), Wendigo_21 (G1), ZoMa_21 (G1), Zombie_21 (G1),

Start 33:

- Found in 3 of 264 (1.1%) of genes in pham
- Manual Annotations of this start: 2 of 250
- Called 100.0% of time when present
- Phage (with cluster) where this start called: Jolie2_21 (G4), Lemuria_22 (G4), Mercurio_23 (G4),

Start 37:

- Found in 22 of 264 (8.3%) of genes in pham
- Manual Annotations of this start: 22 of 250
- Called 100.0% of time when present
- Phage (with cluster) where this start called: Agent47_24 (K5), AlleyCat_25 (K5), Collard_24 (K5), Dadosky_25 (K5), Edugator_24 (K5), Feyre_24 (K5), Gengar_24 (K5), Guillsminger_24 (K5), Heftyboy_24 (K5), InvictusManeo_24 (K5), Kratio_23

(K5), Larva_25 (K5), Leston_24 (K5), Miryou_24 (K5), OkiRoe_24 (K5), Omnicron_25 (K5), Paola_24 (K5), Psycho_25 (K5), Rando14_25 (K5), SoSeph_24 (K5), Thyatira_24 (K5), Waterfoul_24 (K5),

Start 38:

- Found in 3 of 264 (1.1%) of genes in pham
- Manual Annotations of this start: 2 of 250
- Called 100.0% of time when present
- Phage (with cluster) where this start called: P3MA_22 (singleton), Stinson_26 (K1), TPA4_23 (singleton),

Start 39:

- Found in 26 of 264 (9.8%) of genes in pham
- Manual Annotations of this start: 26 of 250
- Called 100.0% of time when present
- Phage (with cluster) where this start called: Amgine_24 (K6), Amohnition_25 (K6), Bryler_25 (K6), Cain_25 (K6), Chris_25 (K1), DarthP_25 (K6), Ekdilam_23 (K6), Ellie_23 (K6), Fefferhead_25 (K6), Hammy_25 (K6), KiSi_25 (K1), Krueger_25 (K6), LeMond_25 (K1), MarkPhew_26 (K1), Nibb_25 (K1), Oscar_25 (K1), PhelpsODU_25 (K6), Phrank_25 (K6), Scarlett_25 (K1), Shadow1_24 (K6), SirPhilip_25 (K6), Sunflower1121_24 (K6), Syra333_25 (K6), Tierra_25 (K6), Unicorn_25 (K6), Ximenita_26 (K6),

Start 40:

- Found in 142 of 264 (53.8%) of genes in pham
- Manual Annotations of this start: 134 of 250
- Called 100.0% of time when present
- Phage (with cluster) where this start called: ActinUp_26 (K1), Adephagia_26 (K1), Adonis_26 (K1), AlishaPH_26 (K1), Amelie_22 (K1), Aminay_24 (K7), Anaya_27 (K1), Angelica_26 (K1), Antsirabe_21 (G5), Apocalypse_26 (K1), Asayake_26 (K1), Atiba_26 (K1), BEEST_26 (K1), BGlluviae_26 (K1), BaghaKamala_26 (K1), BarrelRoll_26 (K1), Beezoo_26 (K1), Belladonna_26 (K1), Binglebops_22 (K1), Blizzard_26 (K1), Boiiii_26 (K1), Boilgate_23 (K8), BoostSeason_22 (K2), CREW_26 (K1), Capricorn_26 (K1), CaseJules_26 (K1), Chancellor_27 (K4), CheetoDust_26 (K1), Cheetobro_27 (K4), CrimD_26 (K1), Curiosium_27 (K1), Dalmuri_26 (K1), Dartin_26 (K1), Deby_26 (K1), Devera_26 (K1), DismalFunk_22 (K2), DismalStressor_22 (K2), Dole_26 (K1), Durfee_26 (K1), Efra2_26 (K1), Emerson_26 (K1), Enkosi_22 (K1), Eponine_27 (K4), Findley_22 (K2), Fionnbharth_27 (K4), Ganymede_27 (K1), Geraldini_26 (K1), Guanica15_26 (K1), HedwigODU_26 (K1), Homura_26 (K1), Hurricane_25 (K3), Hyperbowlee_26 (K1), Illumine_26 (K1), Inky_26 (K1), JAWS_26 (K1), JF1_27 (K4), Jarvi_26 (K1), Jayhawk_26 (K1), Jeckyll_26 (K1), Joy99_26 (K1), Juliette_27 (K4), Keshu_25 (K3), Kraw_28 (K4), LastHope_26 (K1), LilPharaoh_22 (K1), LindNT_26 (K1), Llorens_26 (K1), Lunahalos_26 (K1), MOOREtheMARYer_22 (G3), MacnCheese_26 (K3), Malthus_28 (K4), Marcoliusprime_22 (K2), Marshawn_27 (K6), McMater_26 (K1), Mdavu_22 (K1), MeaningOfLife_26 (K1), Megsy_26 (K1), Milly_22 (K2), MissDaisy_27 (K4), Mitti_27 (K4), Mufasa_22 (K2), Murucutumbu_26 (K1), Mynx_26 (K1), Nikao_22 (K1), Niklas_26 (K1), Nutello_22 (K1), OmniCritical_27 (K4), Padfoot_26 (K1), Padpat_26 (K1), Patt_27 (K4), Peanam_26 (K1), Peel_26 (K1), Pharb_25 (K3), Piatt_26 (K1), Pinnie_22 (G3), Pixie_25 (K3), Pokerus_25 (K1), Prithvi_26 (K1), QuincyRose_25 (K1), Ramen_26 (K1), Rapunzel97_26 (K1), Reptar3000_27 (K4), Richo_26 (K1), Rosmarinus_26 (K1), Ruthiejr_26 (K4), SamScheppers_25 (K4), SgtBeansprout_22 (K1), Shaobing_26 (K1), ShedlockHolmes_25 (K3), ShiaSurprise_26 (K1), Slarp_27

(K4), Slimphazie_26 (K1), Spock_26 (K1), Stargaze_21 (G5), Stinson_27 (K1), Strobilo_22 (K2), Sulley_26 (K1), TBond007_25 (K3), TClif_25 (K6), TM4_22 (K2), Tachez_26 (K1), TaiwanKao_27 (K1), Taquito_25 (K4), TingHuaYa_26 (K1), Tiri_26 (K1), Topper_26 (K1), Torres_22 (K1), TreyKay_26 (K1), TribbleTrouble_24 (K3), TruffulaTree_26 (K1), Twitch_26 (K1), Validus_26 (K1), Veliki_26 (K1), Wintermute_27 (K4), Y10_27 (K4), Y2_27 (K4), YoureAdopted_25 (K1), Yuna_27 (K6), Yunkel11_26 (K1), Zabiza_26 (K1), Zavala_26 (K1), ZoeJ_22 (K2),

Start 41:

- Found in 1 of 264 (0.4%) of genes in pham
- Manual Annotations of this start: 1 of 250
- Called 100.0% of time when present
- Phage (with cluster) where this start called: LaterM_26 (K1),

Summary by clusters:

There are 14 clusters represented in this pham: G5, G4, G3, G2, G1, singleton, K3, K2, K1, K7, K6, K5, K4, K8,

Info for manual annotations of cluster G1:

- Start number 31 was manually annotated 60 times for cluster G1.

Info for manual annotations of cluster G2:

- Start number 29 was manually annotated 3 times for cluster G2.

Info for manual annotations of cluster G3:

- Start number 40 was manually annotated 2 times for cluster G3.

Info for manual annotations of cluster G4:

- Start number 33 was manually annotated 2 times for cluster G4.

Info for manual annotations of cluster G5:

- Start number 40 was manually annotated 1 time for cluster G5.

Info for manual annotations of cluster K1:

- Start number 38 was manually annotated 1 time for cluster K1.
- Start number 39 was manually annotated 7 times for cluster K1.
- Start number 40 was manually annotated 89 times for cluster K1.
- Start number 41 was manually annotated 1 time for cluster K1.

Info for manual annotations of cluster K2:

- Start number 40 was manually annotated 10 times for cluster K2.

Info for manual annotations of cluster K3:

- Start number 40 was manually annotated 8 times for cluster K3.

Info for manual annotations of cluster K4:

- Start number 40 was manually annotated 19 times for cluster K4.

Info for manual annotations of cluster K5:

- Start number 37 was manually annotated 22 times for cluster K5.

Info for manual annotations of cluster K6:

- Start number 39 was manually annotated 19 times for cluster K6.
- Start number 40 was manually annotated 3 times for cluster K6.

Info for manual annotations of cluster K7:

- Start number 40 was manually annotated 1 time for cluster K7.

Info for manual annotations of cluster K8:

- Start number 40 was manually annotated 1 time for cluster K8.

Gene Information:

Gene: ActinUp_26 Start: 20572, Stop: 20880, Start Num: 40

Candidate Starts for ActinUp_26:

(Start: 40 @20572 has 134 MA's), (43, 20602), (58, 20680), (64, 20716),

Gene: Adephagia_26 Start: 20569, Stop: 20877, Start Num: 40

Candidate Starts for Adephagia_26:

(Start: 40 @20569 has 134 MA's), (43, 20599), (58, 20677), (64, 20713),

Gene: Adonis_26 Start: 20575, Stop: 20883, Start Num: 40

Candidate Starts for Adonis_26:

(Start: 40 @20575 has 134 MA's), (43, 20605), (58, 20683), (64, 20719),

Gene: Agent47_24 Start: 20955, Stop: 21272, Start Num: 37

Candidate Starts for Agent47_24:

(Start: 37 @20955 has 22 MA's), (59, 21069), (64, 21099), (66, 21126), (86, 21246),

Gene: AlishaPH_26 Start: 20562, Stop: 20870, Start Num: 40

Candidate Starts for AlishaPH_26:

(Start: 40 @20562 has 134 MA's), (43, 20592), (58, 20670), (64, 20706),

Gene: AlleyCat_25 Start: 20892, Stop: 21209, Start Num: 37

Candidate Starts for AlleyCat_25:

(Start: 37 @20892 has 22 MA's), (59, 21006), (66, 21063), (86, 21183),

Gene: Amelie_22 Start: 20111, Stop: 20413, Start Num: 40

Candidate Starts for Amelie_22:

(Start: 40 @20111 has 134 MA's), (58, 20219), (59, 20225), (64, 20255), (82, 20375),

Gene: Amgine_24 Start: 20660, Stop: 20974, Start Num: 39

Candidate Starts for Amgine_24:

(Start: 39 @20660 has 26 MA's), (50, 20720), (64, 20804), (85, 20951), (87, 20954),

Gene: Aminay_24 Start: 20780, Stop: 21034, Start Num: 40

Candidate Starts for Aminay_24:

(Start: 40 @20780 has 134 MA's), (43, 20810), (60, 20897), (65, 20939), (75, 21008),

Gene: Amohndition_25 Start: 21059, Stop: 21373, Start Num: 39

Candidate Starts for Amohndition_25:

(6, 20558), (8, 20579), (10, 20711), (17, 20852), (Start: 39 @21059 has 26 MA's), (50, 21119), (53, 21122), (64, 21203), (85, 21350), (87, 21353),

Gene: Anaya_27 Start: 20588, Stop: 20896, Start Num: 40

Candidate Starts for Anaya_27:

(Start: 40 @20588 has 134 MA's), (43, 20618), (58, 20696), (64, 20732), (75, 20816),

Gene: Angel_21 Start: 20008, Stop: 20442, Start Num: 31

Candidate Starts for Angel_21:

(Start: 31 @20008 has 60 MA's), (43, 20059), (45, 20065), (52, 20134), (65, 20233), (67, 20254),

Gene: Angelica_26 Start: 20537, Stop: 20845, Start Num: 40

Candidate Starts for Angelica_26:

(Start: 40 @20537 has 134 MA's), (43, 20567), (58, 20645), (64, 20681),

Gene: Annihilator_21 Start: 19999, Stop: 20433, Start Num: 31

Candidate Starts for Annihilator_21:

(Start: 31 @19999 has 60 MA's), (43, 20050), (45, 20056), (52, 20125), (65, 20224), (67, 20245),

Gene: Antsirabe_21 Start: 20386, Stop: 20760, Start Num: 40

Candidate Starts for Antsirabe_21:

(23, 20305), (Start: 40 @20386 has 134 MA's), (57, 20503), (66, 20575),

Gene: Apocalypse_26 Start: 20540, Stop: 20848, Start Num: 40

Candidate Starts for Apocalypse_26:

(Start: 40 @20540 has 134 MA's), (43, 20570), (58, 20648), (64, 20684),

Gene: Aroostook_21 Start: 20008, Stop: 20442, Start Num: 31

Candidate Starts for Aroostook_21:

(Start: 31 @20008 has 60 MA's), (43, 20059), (45, 20065), (52, 20134), (65, 20233), (67, 20254),

Gene: Asayake_26 Start: 20603, Stop: 20911, Start Num: 40

Candidate Starts for Asayake_26:

(Start: 40 @20603 has 134 MA's), (43, 20633), (58, 20711), (64, 20747),

Gene: Atiba_26 Start: 20532, Stop: 20840, Start Num: 40

Candidate Starts for Atiba_26:

(Start: 40 @20532 has 134 MA's), (43, 20562), (58, 20640), (64, 20676),

Gene: Avocado_21 Start: 20322, Stop: 20762, Start Num: 29

Candidate Starts for Avocado_21:

(Start: 29 @20322 has 3 MA's), (42, 20379), (46, 20406), (51, 20463), (67, 20589), (72, 20607), (80, 20655),

Gene: Avrafan_21 Start: 20008, Stop: 20442, Start Num: 31

Candidate Starts for Avrafan_21:

(Start: 31 @20008 has 60 MA's), (43, 20059), (45, 20065), (52, 20134), (65, 20233), (67, 20254),

Gene: AzulaCat_21 Start: 20008, Stop: 20442, Start Num: 31

Candidate Starts for AzulaCat_21:

(Start: 31 @20008 has 60 MA's), (43, 20059), (45, 20065), (52, 20134), (65, 20233), (67, 20254),

Gene: BEEST_26 Start: 20603, Stop: 20911, Start Num: 40

Candidate Starts for BEEST_26:

(Start: 40 @20603 has 134 MA's), (43, 20633), (58, 20711), (64, 20747),

Gene: BGlluviae_26 Start: 20603, Stop: 20911, Start Num: 40

Candidate Starts for BGlluviae_26:

(Start: 40 @20603 has 134 MA's), (43, 20633), (58, 20711), (64, 20747),

Gene: BPs_21 Start: 20008, Stop: 20442, Start Num: 31

Candidate Starts for BPs_21:

(Start: 31 @20008 has 60 MA's), (43, 20059), (45, 20065), (52, 20134), (65, 20233), (67, 20254),

Gene: BQuat_21 Start: 19999, Stop: 20433, Start Num: 31

Candidate Starts for BQuat_21:

(Start: 31 @19999 has 60 MA's), (43, 20050), (45, 20056), (52, 20125), (65, 20224), (67, 20245),

Gene: BaghaKamala_26 Start: 20532, Stop: 20840, Start Num: 40

Candidate Starts for BaghaKamala_26:

(Start: 40 @20532 has 134 MA's), (43, 20562), (58, 20640), (64, 20676),

Gene: Barkley26_21 Start: 20012, Stop: 20446, Start Num: 31

Candidate Starts for Barkley26_21:

(5, 19532), (15, 19805), (Start: 31 @20012 has 60 MA's), (45, 20069), (46, 20087), (52, 20138), (65, 20237), (67, 20258), (83, 20354),

Gene: BarrelRoll_26 Start: 20555, Stop: 20863, Start Num: 40

Candidate Starts for BarrelRoll_26:

(Start: 40 @20555 has 134 MA's), (43, 20585), (58, 20663), (64, 20699),

Gene: Beezoo_26 Start: 20579, Stop: 20887, Start Num: 40

Candidate Starts for Beezoo_26:

(Start: 40 @20579 has 134 MA's), (43, 20609), (58, 20687), (64, 20723),

Gene: Belladonna_26 Start: 20603, Stop: 20911, Start Num: 40

Candidate Starts for Belladonna_26:

(Start: 40 @20603 has 134 MA's), (43, 20633), (58, 20711), (64, 20747),

Gene: Biglebops_22 Start: 20111, Stop: 20413, Start Num: 40

Candidate Starts for Biglebops_22:

(Start: 40 @20111 has 134 MA's), (58, 20219), (59, 20225), (64, 20255), (82, 20375),

Gene: Blizzard_26 Start: 20603, Stop: 20911, Start Num: 40

Candidate Starts for Blizzard_26:

(Start: 40 @20603 has 134 MA's), (43, 20633), (58, 20711), (64, 20747),

Gene: Boiiii_26 Start: 20605, Stop: 20913, Start Num: 40

Candidate Starts for Boiiii_26:

(Start: 40 @20605 has 134 MA's), (43, 20635), (58, 20713), (64, 20749),

Gene: Boilgate_23 Start: 20959, Stop: 21213, Start Num: 40

Candidate Starts for Boilgate_23:

(17, 20728), (Start: 40 @20959 has 134 MA's), (42, 20986), (50, 21019), (64, 21103),

Gene: BoostSeason_22 Start: 18449, Stop: 18703, Start Num: 40

Candidate Starts for BoostSeason_22:

(19, 18308), (35, 18437), (Start: 40 @18449 has 134 MA's), (43, 18479), (60, 18566), (75, 18677),

Gene: BruceB_21 Start: 20008, Stop: 20442, Start Num: 31
Candidate Starts for BruceB_21:
(Start: 31 @20008 has 60 MA's), (43, 20059), (45, 20065), (52, 20134), (65, 20233), (67, 20254),

Gene: Bryler_25 Start: 19758, Stop: 20069, Start Num: 39
Candidate Starts for Bryler_25:
(Start: 39 @19758 has 26 MA's), (50, 19818), (64, 19902), (79, 20004),

Gene: CLED96_21 Start: 20008, Stop: 20442, Start Num: 31
Candidate Starts for CLED96_21:
(Start: 31 @20008 has 60 MA's), (43, 20059), (45, 20065), (52, 20134), (65, 20233), (67, 20254),

Gene: CREW_26 Start: 20603, Stop: 20911, Start Num: 40
Candidate Starts for CREW_26:
(Start: 40 @20603 has 134 MA's), (43, 20633), (58, 20711), (64, 20747),

Gene: Cain_25 Start: 19746, Stop: 20057, Start Num: 39
Candidate Starts for Cain_25:
(Start: 39 @19746 has 26 MA's), (50, 19806), (64, 19890), (79, 19992),

Gene: Cambiare_22 Start: 20787, Stop: 21227, Start Num: 29
Candidate Starts for Cambiare_22:
(Start: 29 @20787 has 3 MA's), (42, 20844), (46, 20871), (51, 20928), (67, 21054), (72, 21072), (80, 21120),

Gene: Camri_21 Start: 20008, Stop: 20442, Start Num: 31
Candidate Starts for Camri_21:
(Start: 31 @20008 has 60 MA's), (43, 20059), (45, 20065), (52, 20134), (65, 20233), (67, 20254),

Gene: Capricorn_26 Start: 20603, Stop: 20911, Start Num: 40
Candidate Starts for Capricorn_26:
(Start: 40 @20603 has 134 MA's), (43, 20633), (58, 20711), (64, 20747),

Gene: CaseJules_26 Start: 20603, Stop: 20911, Start Num: 40
Candidate Starts for CaseJules_26:
(Start: 40 @20603 has 134 MA's), (43, 20633), (58, 20711), (64, 20747),

Gene: CassieYates_21 Start: 20008, Stop: 20442, Start Num: 31
Candidate Starts for CassieYates_21:
(Start: 31 @20008 has 60 MA's), (43, 20059), (45, 20065), (52, 20134), (65, 20233), (67, 20254),

Gene: Cedasite_21 Start: 20008, Stop: 20442, Start Num: 31
Candidate Starts for Cedasite_21:
(Start: 31 @20008 has 60 MA's), (43, 20059), (45, 20065), (52, 20134), (65, 20233), (67, 20254),

Gene: Chance64_21 Start: 20008, Stop: 20442, Start Num: 31
Candidate Starts for Chance64_21:
(Start: 31 @20008 has 60 MA's), (43, 20059), (45, 20065), (52, 20134), (65, 20233), (67, 20254),

Gene: Chancellor_27 Start: 22045, Stop: 22290, Start Num: 40
Candidate Starts for Chancellor_27:
(Start: 40 @22045 has 134 MA's), (75, 22273),

Gene: CheetoDust_26 Start: 20580, Stop: 20888, Start Num: 40
Candidate Starts for CheetoDust_26:
(Start: 40 @20580 has 134 MA's), (43, 20610), (58, 20688), (64, 20724),

Gene: Cheetobro_27 Start: 22042, Stop: 22287, Start Num: 40
Candidate Starts for Cheetobro_27:
(Start: 40 @22042 has 134 MA's), (75, 22270),

Gene: Cherrybomb426_21 Start: 20008, Stop: 20442, Start Num: 31
Candidate Starts for Cherrybomb426_21:
(Start: 31 @20008 has 60 MA's), (43, 20059), (45, 20065), (52, 20134), (65, 20233), (67, 20254),

Gene: Chris_25 Start: 19832, Stop: 20134, Start Num: 39
Candidate Starts for Chris_25:
(16, 19604), (19, 19694), (21, 19715), (22, 19733), (30, 19808), (Start: 39 @19832 has 26 MA's), (53, 19895), (64, 19976), (73, 20039),

Gene: Coleslaw_21 Start: 19999, Stop: 20433, Start Num: 31
Candidate Starts for Coleslaw_21:
(Start: 31 @19999 has 60 MA's), (43, 20050), (45, 20056), (52, 20125), (65, 20224), (67, 20245),

Gene: Collard_24 Start: 20916, Stop: 21233, Start Num: 37
Candidate Starts for Collard_24:
(Start: 37 @20916 has 22 MA's), (59, 21030), (64, 21060), (66, 21087), (86, 21207),

Gene: Crespo_21 Start: 20009, Stop: 20443, Start Num: 31
Candidate Starts for Crespo_21:
(Start: 31 @20009 has 60 MA's), (43, 20060), (45, 20066), (52, 20135), (65, 20234), (67, 20255),

Gene: CrimD_26 Start: 20541, Stop: 20849, Start Num: 40
Candidate Starts for CrimD_26:
(Start: 40 @20541 has 134 MA's), (43, 20571), (58, 20649), (64, 20685),

Gene: Curiosium_27 Start: 20274, Stop: 20582, Start Num: 40
Candidate Starts for Curiosium_27:
(Start: 40 @20274 has 134 MA's), (43, 20304), (58, 20382), (64, 20418),

Gene: DMoney_21 Start: 20008, Stop: 20442, Start Num: 31
Candidate Starts for DMoney_21:
(Start: 31 @20008 has 60 MA's), (43, 20059), (45, 20065), (52, 20134), (65, 20233), (67, 20254),

Gene: DNAIII_0021 Start: 20017, Stop: 20451, Start Num: 31
Candidate Starts for DNAIII_0021:
(Start: 31 @20017 has 60 MA's), (43, 20068), (45, 20074), (52, 20143), (65, 20242), (67, 20263),

Gene: Dadosky_25 Start: 20893, Stop: 21210, Start Num: 37
Candidate Starts for Dadosky_25:
(Start: 37 @20893 has 22 MA's), (59, 21007), (66, 21064), (86, 21184),

Gene: Dalmuri_26 Start: 20603, Stop: 20911, Start Num: 40
Candidate Starts for Dalmuri_26:
(Start: 40 @20603 has 134 MA's), (43, 20633), (58, 20711), (64, 20747),

Gene: Darionha_21 Start: 20008, Stop: 20442, Start Num: 31

Candidate Starts for Darionha_21:

(Start: 31 @20008 has 60 MA's), (43, 20059), (45, 20065), (52, 20134), (65, 20233), (67, 20254),

Gene: DarthP_25 Start: 21005, Stop: 21319, Start Num: 39

Candidate Starts for DarthP_25:

(6, 20504), (8, 20525), (10, 20657), (17, 20798), (Start: 39 @21005 has 26 MA's), (50, 21065), (53, 21068), (64, 21149), (85, 21296), (87, 21299),

Gene: Dartin_26 Start: 19927, Stop: 20229, Start Num: 40

Candidate Starts for Dartin_26:

(Start: 40 @19927 has 134 MA's), (45, 19963), (50, 19987), (58, 20035), (59, 20041), (64, 20071),

Gene: Deby_26 Start: 20537, Stop: 20845, Start Num: 40

Candidate Starts for Deby_26:

(Start: 40 @20537 has 134 MA's), (43, 20567), (58, 20645), (64, 20681),

Gene: Devera_26 Start: 20585, Stop: 20893, Start Num: 40

Candidate Starts for Devera_26:

(Start: 40 @20585 has 134 MA's), (43, 20615), (58, 20693), (64, 20729),

Gene: DismalFunk_22 Start: 18423, Stop: 18677, Start Num: 40

Candidate Starts for DismalFunk_22:

(19, 18282), (35, 18411), (Start: 40 @18423 has 134 MA's), (43, 18453), (60, 18540), (75, 18651),

Gene: DismalStressor_22 Start: 18423, Stop: 18677, Start Num: 40

Candidate Starts for DismalStressor_22:

(19, 18282), (35, 18411), (Start: 40 @18423 has 134 MA's), (43, 18453), (60, 18540), (75, 18651),

Gene: Dole_26 Start: 20587, Stop: 20895, Start Num: 40

Candidate Starts for Dole_26:

(Start: 40 @20587 has 134 MA's), (43, 20617), (58, 20695), (64, 20731),

Gene: Durfee_26 Start: 20603, Stop: 20911, Start Num: 40

Candidate Starts for Durfee_26:

(Start: 40 @20603 has 134 MA's), (43, 20633), (58, 20711), (64, 20747),

Gene: ECartman_21 Start: 20008, Stop: 20442, Start Num: 31

Candidate Starts for ECartman_21:

(Start: 31 @20008 has 60 MA's), (43, 20059), (45, 20065), (52, 20134), (65, 20233), (67, 20254),

Gene: Edugator_24 Start: 20892, Stop: 21209, Start Num: 37

Candidate Starts for Edugator_24:

(Start: 37 @20892 has 22 MA's), (59, 21006), (66, 21063), (86, 21183),

Gene: Efra2_26 Start: 19773, Stop: 20081, Start Num: 40

Candidate Starts for Efra2_26:

(Start: 40 @19773 has 134 MA's), (43, 19803), (58, 19881), (64, 19917),

Gene: Ekdilam_23 Start: 20770, Stop: 21084, Start Num: 39

Candidate Starts for Ekdilam_23:

(10, 20422), (17, 20563), (Start: 39 @20770 has 26 MA's), (50, 20830), (64, 20914), (79, 21016),

Gene: Ellie_23 Start: 20744, Stop: 21058, Start Num: 39

Candidate Starts for Ellie_23:

(Start: 39 @20744 has 26 MA's), (50, 20804), (64, 20888), (85, 21035), (87, 21038),

Gene: Emerson_26 Start: 20563, Stop: 20871, Start Num: 40

Candidate Starts for Emerson_26:

(Start: 40 @20563 has 134 MA's), (43, 20593), (58, 20671), (64, 20707),

Gene: Enkosi_22 Start: 20111, Stop: 20413, Start Num: 40

Candidate Starts for Enkosi_22:

(Start: 40 @20111 has 134 MA's), (58, 20219), (59, 20225), (64, 20255), (82, 20375),

Gene: Eponine_27 Start: 21935, Stop: 22180, Start Num: 40

Candidate Starts for Eponine_27:

(Start: 40 @21935 has 134 MA's),

Gene: Fefferhead_25 Start: 20911, Stop: 21225, Start Num: 39

Candidate Starts for Fefferhead_25:

(Start: 39 @20911 has 26 MA's), (50, 20971), (64, 21055), (85, 21202), (87, 21205),

Gene: Feyre_24 Start: 20777, Stop: 21094, Start Num: 37

Candidate Starts for Feyre_24:

(Start: 37 @20777 has 22 MA's), (59, 20891), (64, 20921), (66, 20948), (86, 21068),

Gene: Findley_22 Start: 18423, Stop: 18677, Start Num: 40

Candidate Starts for Findley_22:

(Start: 40 @18423 has 134 MA's), (43, 18453), (50, 18483), (60, 18540), (75, 18651),

Gene: Fionnbharth_27 Start: 22035, Stop: 22280, Start Num: 40

Candidate Starts for Fionnbharth_27:

(Start: 40 @22035 has 134 MA's), (75, 22263),

Gene: FlagStaff_21 Start: 20199, Stop: 20639, Start Num: 29

Candidate Starts for FlagStaff_21:

(Start: 29 @20199 has 3 MA's), (42, 20256), (46, 20283), (51, 20340), (80, 20535),

Gene: Frosty24_21 Start: 20008, Stop: 20442, Start Num: 31

Candidate Starts for Frosty24_21:

(Start: 31 @20008 has 60 MA's), (43, 20059), (45, 20065), (52, 20134), (65, 20233), (67, 20254),

Gene: Ganymede_27 Start: 20583, Stop: 20891, Start Num: 40

Candidate Starts for Ganymede_27:

(Start: 40 @20583 has 134 MA's), (43, 20613), (58, 20691), (64, 20727),

Gene: Gengar_24 Start: 20884, Stop: 21201, Start Num: 37

Candidate Starts for Gengar_24:

(Start: 37 @20884 has 22 MA's), (43, 20914), (59, 20998), (64, 21028), (66, 21055), (86, 21175), (89, 21181),

Gene: Geraldini_26 Start: 20579, Stop: 20887, Start Num: 40

Candidate Starts for Geraldini_26:

(Start: 40 @20579 has 134 MA's), (43, 20609), (58, 20687), (64, 20723),

Gene: Gideon_21 Start: 20008, Stop: 20442, Start Num: 31

Candidate Starts for Gideon_21:

(Start: 31 @20008 has 60 MA's), (43, 20059), (45, 20065), (52, 20134), (65, 20233), (67, 20254),

Gene: GoldenAsh_21 Start: 20008, Stop: 20442, Start Num: 31

Candidate Starts for GoldenAsh_21:

(Start: 31 @20008 has 60 MA's), (43, 20059), (45, 20065), (52, 20134), (65, 20233), (67, 20254),

Gene: Gomashi_21 Start: 20009, Stop: 20443, Start Num: 31

Candidate Starts for Gomashi_21:

(Start: 31 @20009 has 60 MA's), (43, 20060), (45, 20066), (52, 20135), (65, 20234), (67, 20255),

Gene: Grizzly_21 Start: 20012, Stop: 20446, Start Num: 31

Candidate Starts for Grizzly_21:

(5, 19532), (15, 19805), (Start: 31 @20012 has 60 MA's), (45, 20069), (46, 20087), (52, 20138), (65, 20237), (67, 20258), (83, 20354),

Gene: Guanica15_26 Start: 19789, Stop: 20097, Start Num: 40

Candidate Starts for Guanica15_26:

(Start: 40 @19789 has 134 MA's), (43, 19819), (58, 19897), (64, 19933),

Gene: Guillsminger_24 Start: 20859, Stop: 21176, Start Num: 37

Candidate Starts for Guillsminger_24:

(Start: 37 @20859 has 22 MA's), (59, 20973), (64, 21003), (66, 21030), (86, 21150),

Gene: Halo_21 Start: 20003, Stop: 20437, Start Num: 31

Candidate Starts for Halo_21:

(Start: 31 @20003 has 60 MA's), (43, 20054), (45, 20060), (52, 20129), (65, 20228), (67, 20249),

Gene: Hammy_25 Start: 21002, Stop: 21316, Start Num: 39

Candidate Starts for Hammy_25:

(6, 20501), (8, 20522), (10, 20654), (17, 20795), (Start: 39 @21002 has 26 MA's), (50, 21062), (53, 21065), (64, 21146), (85, 21293), (87, 21296),

Gene: HedwigODU_26 Start: 20572, Stop: 20880, Start Num: 40

Candidate Starts for HedwigODU_26:

(Start: 40 @20572 has 134 MA's), (43, 20602), (58, 20680), (64, 20716),

Gene: Heftyboy_24 Start: 21007, Stop: 21324, Start Num: 37

Candidate Starts for Heftyboy_24:

(Start: 37 @21007 has 22 MA's), (59, 21121), (64, 21151), (66, 21178), (86, 21298),

Gene: Homura_26 Start: 20603, Stop: 20911, Start Num: 40

Candidate Starts for Homura_26:

(Start: 40 @20603 has 134 MA's), (43, 20633), (58, 20711), (64, 20747),

Gene: Hope_21 Start: 20008, Stop: 20442, Start Num: 31

Candidate Starts for Hope_21:

(Start: 31 @20008 has 60 MA's), (43, 20059), (45, 20065), (52, 20134), (65, 20233), (67, 20254),

Gene: Hotshotbaby7_21 Start: 20008, Stop: 20442, Start Num: 31

Candidate Starts for Hotshotbaby7_21:

(Start: 31 @20008 has 60 MA's), (43, 20059), (45, 20065), (52, 20134), (65, 20233), (67, 20254),

Gene: Hurricane_25 Start: 21014, Stop: 21331, Start Num: 40

Candidate Starts for Hurricane_25:

(Start: 40 @21014 has 134 MA's), (64, 21158), (70, 21203), (71, 21209), (88, 21308),

Gene: Hyperbowlee_26 Start: 20603, Stop: 20911, Start Num: 40

Candidate Starts for Hyperbowlee_26:

(Start: 40 @20603 has 134 MA's), (43, 20633), (58, 20711), (64, 20747),

Gene: Illumine_26 Start: 20587, Stop: 20895, Start Num: 40

Candidate Starts for Illumine_26:

(Start: 40 @20587 has 134 MA's), (43, 20617), (58, 20695), (64, 20731),

Gene: Inky_26 Start: 20603, Stop: 20911, Start Num: 40

Candidate Starts for Inky_26:

(Start: 40 @20603 has 134 MA's), (43, 20633), (58, 20711), (64, 20747),

Gene: InvictusManeo_24 Start: 20959, Stop: 21276, Start Num: 37

Candidate Starts for InvictusManeo_24:

(Start: 37 @20959 has 22 MA's), (59, 21073), (64, 21103), (66, 21130), (86, 21250),

Gene: JAWS_26 Start: 20557, Stop: 20865, Start Num: 40

Candidate Starts for JAWS_26:

(Start: 40 @20557 has 134 MA's), (43, 20587), (58, 20665), (64, 20701),

Gene: JF1_27 Start: 22034, Stop: 22279, Start Num: 40

Candidate Starts for JF1_27:

(Start: 40 @22034 has 134 MA's), (75, 22262),

Gene: Jane_21 Start: 20008, Stop: 20442, Start Num: 31

Candidate Starts for Jane_21:

(Start: 31 @20008 has 60 MA's), (43, 20059), (45, 20065), (52, 20134), (65, 20233), (67, 20254),

Gene: Jarvi_26 Start: 20603, Stop: 20911, Start Num: 40

Candidate Starts for Jarvi_26:

(Start: 40 @20603 has 134 MA's), (43, 20633), (58, 20711), (64, 20747),

Gene: Jayhawk_26 Start: 20570, Stop: 20878, Start Num: 40

Candidate Starts for Jayhawk_26:

(Start: 40 @20570 has 134 MA's), (43, 20600), (58, 20678), (64, 20714),

Gene: Jeckyll_26 Start: 20603, Stop: 20911, Start Num: 40

Candidate Starts for Jeckyll_26:

(Start: 40 @20603 has 134 MA's), (43, 20633), (58, 20711), (64, 20747),

Gene: Jolene_21 Start: 20008, Stop: 20442, Start Num: 31

Candidate Starts for Jolene_21:

(Start: 31 @20008 has 60 MA's), (43, 20059), (45, 20065), (52, 20134), (65, 20233), (67, 20254),

Gene: Jolie2_21 Start: 19327, Stop: 19776, Start Num: 33

Candidate Starts for Jolie2_21:

(Start: 33 @19327 has 2 MA's), (36, 19345), (42, 19390), (47, 19420), (49, 19444), (51, 19474), (69, 19600), (78, 19657), (83, 19690),

Gene: Jonghyun_21 Start: 20008, Stop: 20442, Start Num: 31

Candidate Starts for Jonghyun_21:

(Start: 31 @20008 has 60 MA's), (43, 20059), (45, 20065), (52, 20134), (65, 20233), (67, 20254),

Gene: JorRay_21 Start: 20008, Stop: 20442, Start Num: 31

Candidate Starts for JorRay_21:

(Start: 31 @20008 has 60 MA's), (43, 20059), (45, 20065), (52, 20134), (65, 20233), (67, 20254),

Gene: Joy99_26 Start: 20532, Stop: 20840, Start Num: 40

Candidate Starts for Joy99_26:

(Start: 40 @20532 has 134 MA's), (43, 20562), (58, 20640), (64, 20676),

Gene: Juliette_27 Start: 21935, Stop: 22180, Start Num: 40

Candidate Starts for Juliette_27:

(Start: 40 @21935 has 134 MA's),

Gene: Kareem_21 Start: 20008, Stop: 20442, Start Num: 31

Candidate Starts for Kareem_21:

(Start: 31 @20008 has 60 MA's), (43, 20059), (45, 20065), (52, 20134), (65, 20233), (67, 20254),

Gene: Kasen3_21 Start: 20009, Stop: 20443, Start Num: 31

Candidate Starts for Kasen3_21:

(Start: 31 @20009 has 60 MA's), (43, 20060), (45, 20066), (52, 20135), (65, 20234), (67, 20255),

Gene: Keshu_25 Start: 21006, Stop: 21314, Start Num: 40

Candidate Starts for Keshu_25:

(Start: 40 @21006 has 134 MA's), (63, 21147), (70, 21195), (71, 21201), (84, 21288), (88, 21300),

Gene: KiSi_25 Start: 19734, Stop: 20036, Start Num: 39

Candidate Starts for KiSi_25:

(Start: 39 @19734 has 26 MA's), (53, 19797), (64, 19878),

Gene: Kratio_23 Start: 20590, Stop: 20907, Start Num: 37

Candidate Starts for Kratio_23:

(Start: 37 @20590 has 22 MA's), (59, 20704), (64, 20734), (66, 20761), (86, 20881),

Gene: Kraw_28 Start: 21958, Stop: 22203, Start Num: 40

Candidate Starts for Kraw_28:

(Start: 40 @21958 has 134 MA's), (75, 22186),

Gene: Krueger_25 Start: 19703, Stop: 20014, Start Num: 39

Candidate Starts for Krueger_25:

(Start: 39 @19703 has 26 MA's), (50, 19763), (64, 19847), (65, 19862),

Gene: Larva_25 Start: 20760, Stop: 21077, Start Num: 37

Candidate Starts for Larva_25:

(Start: 37 @20760 has 22 MA's), (59, 20874), (66, 20931), (86, 21051),

Gene: LastHope_26 Start: 19866, Stop: 20174, Start Num: 40

Candidate Starts for LastHope_26:

(Start: 40 @19866 has 134 MA's), (50, 19926), (64, 20010), (79, 20112),

Gene: LaterM_26 Start: 20549, Stop: 20809, Start Num: 41

Candidate Starts for LaterM_26:

(12, 20258), (18, 20336), (20, 20402), (24, 20459), (25, 20462), (30, 20507), (Start: 41 @20549 has 1 MA's), (52, 20615), (54, 20621), (61, 20678), (75, 20783), (78, 20798),

Gene: LeMond_25 Start: 19805, Stop: 20107, Start Num: 39

Candidate Starts for LeMond_25:

(Start: 39 @19805 has 26 MA's), (53, 19868), (64, 19949),

Gene: Lemuria_22 Start: 20141, Stop: 20578, Start Num: 33

Candidate Starts for Lemuria_22:

(8, 19676), (13, 19886), (Start: 33 @20141 has 2 MA's), (42, 20204), (73, 20423), (75, 20444), (78, 20459),

Gene: Leston_24 Start: 20989, Stop: 21306, Start Num: 37

Candidate Starts for Leston_24:

(Start: 37 @20989 has 22 MA's), (59, 21103), (64, 21133), (66, 21160), (86, 21280),

Gene: Liefie_21 Start: 20007, Stop: 20441, Start Num: 31

Candidate Starts for Liefie_21:

(Start: 31 @20007 has 60 MA's), (43, 20058), (45, 20064), (52, 20133), (65, 20232), (67, 20253),

Gene: LilPharaoh_22 Start: 20111, Stop: 20413, Start Num: 40

Candidate Starts for LilPharaoh_22:

(Start: 40 @20111 has 134 MA's), (58, 20219), (59, 20225), (64, 20255), (82, 20375),

Gene: LindNT_26 Start: 20537, Stop: 20845, Start Num: 40

Candidate Starts for LindNT_26:

(Start: 40 @20537 has 134 MA's), (43, 20567), (58, 20645), (64, 20681), (75, 20765),

Gene: Llorens_26 Start: 20603, Stop: 20911, Start Num: 40

Candidate Starts for Llorens_26:

(Start: 40 @20603 has 134 MA's), (43, 20633), (58, 20711), (64, 20747),

Gene: LouisV14_21 Start: 20008, Stop: 20442, Start Num: 31

Candidate Starts for LouisV14_21:

(Start: 31 @20008 has 60 MA's), (43, 20059), (45, 20065), (52, 20134), (65, 20233), (67, 20254),

Gene: Lunahalos_26 Start: 20603, Stop: 20911, Start Num: 40

Candidate Starts for Lunahalos_26:

(Start: 40 @20603 has 134 MA's), (43, 20633), (58, 20711), (64, 20747),

Gene: MOOREtheMARYer_22 Start: 20362, Stop: 20802, Start Num: 40

Candidate Starts for MOOREtheMARYer_22:

(Start: 40 @20362 has 134 MA's), (65, 20581), (69, 20605), (73, 20626),

Gene: MacnCheese_26 Start: 21248, Stop: 21556, Start Num: 40

Candidate Starts for MacnCheese_26:

(8, 20759), (10, 20891), (Start: 40 @21248 has 134 MA's), (43, 21278), (70, 21437), (71, 21443), (88, 21542),

Gene: Maliketh_21 Start: 20008, Stop: 20442, Start Num: 31
Candidate Starts for Maliketh_21:
(Start: 31 @20008 has 60 MA's), (43, 20059), (45, 20065), (52, 20134), (65, 20233), (67, 20254),

Gene: Malthus_28 Start: 21958, Stop: 22203, Start Num: 40
Candidate Starts for Malthus_28:
(Start: 40 @21958 has 134 MA's), (75, 22186),

Gene: Marcoliusprime_22 Start: 18423, Stop: 18677, Start Num: 40
Candidate Starts for Marcoliusprime_22:
(19, 18282), (35, 18411), (Start: 40 @18423 has 134 MA's), (43, 18453), (60, 18540), (75, 18651),

Gene: MarkPhew_26 Start: 19694, Stop: 19996, Start Num: 39
Candidate Starts for MarkPhew_26:
(Start: 39 @19694 has 26 MA's), (53, 19757), (64, 19838),

Gene: Marmie_21 Start: 20008, Stop: 20442, Start Num: 31
Candidate Starts for Marmie_21:
(Start: 31 @20008 has 60 MA's), (43, 20059), (45, 20065), (52, 20134), (65, 20233), (67, 20254),

Gene: Marshawn_27 Start: 20316, Stop: 20672, Start Num: 40
Candidate Starts for Marshawn_27:
(14, 20082), (19, 20178), (Start: 40 @20316 has 134 MA's), (45, 20352), (48, 20370), (50, 20376), (70, 20505), (72, 20517), (76, 20553),

Gene: McMater_26 Start: 19927, Stop: 20229, Start Num: 40
Candidate Starts for McMater_26:
(Start: 40 @19927 has 134 MA's), (45, 19963), (50, 19987), (58, 20035), (59, 20041), (64, 20071),

Gene: Mdavu_22 Start: 20099, Stop: 20401, Start Num: 40
Candidate Starts for Mdavu_22:
(Start: 40 @20099 has 134 MA's), (58, 20207), (59, 20213), (64, 20243), (82, 20363),

Gene: MeaningOfLife_26 Start: 20539, Stop: 20847, Start Num: 40
Candidate Starts for MeaningOfLife_26:
(Start: 40 @20539 has 134 MA's), (43, 20569), (58, 20647), (64, 20683),

Gene: Megsy_26 Start: 20540, Stop: 20848, Start Num: 40
Candidate Starts for Megsy_26:
(Start: 40 @20540 has 134 MA's), (43, 20570), (58, 20648), (64, 20684), (75, 20768),

Gene: Mercurio_23 Start: 20757, Stop: 21194, Start Num: 33
Candidate Starts for Mercurio_23:
(2, 19929), (8, 20292), (13, 20502), (Start: 33 @20757 has 2 MA's), (42, 20820), (73, 21039), (78, 21075),

Gene: Milly_22 Start: 18423, Stop: 18677, Start Num: 40
Candidate Starts for Milly_22:
(19, 18282), (26, 18372), (35, 18411), (Start: 40 @18423 has 134 MA's), (43, 18453), (60, 18540), (75, 18651),

Gene: Miryou_24 Start: 20844, Stop: 21161, Start Num: 37
Candidate Starts for Miryou_24:

(Start: 37 @20844 has 22 MA's), (59, 20958), (64, 20988), (66, 21015), (86, 21135),

Gene: MissDaisy_27 Start: 21797, Stop: 22042, Start Num: 40

Candidate Starts for MissDaisy_27:

(Start: 40 @21797 has 134 MA's), (75, 22025),

Gene: Mitti_27 Start: 21958, Stop: 22203, Start Num: 40

Candidate Starts for Mitti_27:

(Start: 40 @21958 has 134 MA's), (75, 22186),

Gene: Mowgli_21 Start: 20008, Stop: 20442, Start Num: 31

Candidate Starts for Mowgli_21:

(Start: 31 @20008 has 60 MA's), (43, 20059), (45, 20065), (52, 20134), (65, 20233), (67, 20254),

Gene: Mufasa_22 Start: 18443, Stop: 18697, Start Num: 40

Candidate Starts for Mufasa_22:

(19, 18302), (35, 18431), (Start: 40 @18443 has 134 MA's), (43, 18473), (60, 18560), (75, 18671),

Gene: Murucutumbu_26 Start: 20523, Stop: 20831, Start Num: 40

Candidate Starts for Murucutumbu_26:

(Start: 40 @20523 has 134 MA's), (43, 20553), (58, 20631), (64, 20667),

Gene: Mynx_26 Start: 20586, Stop: 20894, Start Num: 40

Candidate Starts for Mynx_26:

(Start: 40 @20586 has 134 MA's), (43, 20616), (58, 20694), (64, 20730),

Gene: Nibb_25 Start: 19835, Stop: 20137, Start Num: 39

Candidate Starts for Nibb_25:

(Start: 39 @19835 has 26 MA's), (53, 19898), (64, 19979), (79, 20081),

Gene: Nikao_22 Start: 20111, Stop: 20413, Start Num: 40

Candidate Starts for Nikao_22:

(Start: 40 @20111 has 134 MA's), (58, 20219), (59, 20225), (64, 20255), (82, 20375),

Gene: Niklas_26 Start: 19930, Stop: 20232, Start Num: 40

Candidate Starts for Niklas_26:

(Start: 40 @19930 has 134 MA's), (45, 19966), (50, 19990), (58, 20038), (59, 20044), (64, 20074),

Gene: Nutello_22 Start: 20111, Stop: 20413, Start Num: 40

Candidate Starts for Nutello_22:

(Start: 40 @20111 has 134 MA's), (58, 20219), (59, 20225), (64, 20255), (82, 20375),

Gene: OctaviousRex_21 Start: 20008, Stop: 20442, Start Num: 31

Candidate Starts for OctaviousRex_21:

(Start: 31 @20008 has 60 MA's), (43, 20059), (45, 20065), (52, 20134), (65, 20233), (67, 20254),

Gene: OkiRoe_24 Start: 20860, Stop: 21177, Start Num: 37

Candidate Starts for OkiRoe_24:

(Start: 37 @20860 has 22 MA's), (59, 20974), (64, 21004), (66, 21031), (86, 21151),

Gene: Olga_21 Start: 20008, Stop: 20442, Start Num: 31

Candidate Starts for Olga_21:

(Start: 31 @20008 has 60 MA's), (43, 20059), (45, 20065), (52, 20134), (65, 20233), (67, 20254),

Gene: OmniCritical_27 Start: 21943, Stop: 22188, Start Num: 40
Candidate Starts for OmniCritical_27:
(Start: 40 @21943 has 134 MA's), (75, 22171),

Gene: Omnicron_25 Start: 19679, Stop: 19996, Start Num: 37
Candidate Starts for Omnicron_25:
(Start: 37 @19679 has 22 MA's), (59, 19793), (64, 19823), (66, 19850), (86, 19970),

Gene: Oscar_25 Start: 19806, Stop: 20108, Start Num: 39
Candidate Starts for Oscar_25:
(Start: 39 @19806 has 26 MA's), (53, 19869), (64, 19950),

Gene: P3MA_22 Start: 17776, Stop: 18057, Start Num: 38
Candidate Starts for P3MA_22:
(32, 17761), (34, 17764), (Start: 38 @17776 has 2 MA's), (43, 17806), (45, 17812), (54, 17854), (56, 17863), (65, 17950), (67, 17974), (68, 17977), (74, 18010), (77, 18034),

Gene: Pace1224_21 Start: 20199, Stop: 20639, Start Num: 29
Candidate Starts for Pace1224_21:
(Start: 29 @20199 has 3 MA's), (42, 20256), (46, 20283), (51, 20340), (80, 20535),

Gene: Padfoot_26 Start: 20603, Stop: 20911, Start Num: 40
Candidate Starts for Padfoot_26:
(Start: 40 @20603 has 134 MA's), (43, 20633), (58, 20711), (64, 20747),

Gene: Padpat_26 Start: 20563, Stop: 20871, Start Num: 40
Candidate Starts for Padpat_26:
(Start: 40 @20563 has 134 MA's), (43, 20593), (58, 20671), (64, 20707),

Gene: Paito_21 Start: 20209, Stop: 20643, Start Num: 31
Candidate Starts for Paito_21:
(Start: 31 @20209 has 60 MA's), (65, 20431), (67, 20452),

Gene: Paola_24 Start: 20859, Stop: 21176, Start Num: 37
Candidate Starts for Paola_24:
(Start: 37 @20859 has 22 MA's), (59, 20973), (64, 21003), (66, 21030), (86, 21150),

Gene: Patt_27 Start: 21776, Stop: 22021, Start Num: 40
Candidate Starts for Patt_27:
(Start: 40 @21776 has 134 MA's), (75, 22004),

Gene: Peanam_26 Start: 19927, Stop: 20229, Start Num: 40
Candidate Starts for Peanam_26:
(Start: 40 @19927 has 134 MA's), (45, 19963), (50, 19987), (58, 20035), (59, 20041), (64, 20071),

Gene: Peeb_21 Start: 20008, Stop: 20442, Start Num: 31
Candidate Starts for Peeb_21:
(Start: 31 @20008 has 60 MA's), (43, 20059), (45, 20065), (52, 20134), (65, 20233), (67, 20254),

Gene: Peel_26 Start: 20603, Stop: 20911, Start Num: 40
Candidate Starts for Peel_26:
(Start: 40 @20603 has 134 MA's), (43, 20633), (58, 20711), (64, 20747),

Gene: Periodt_21 Start: 20008, Stop: 20442, Start Num: 31
Candidate Starts for Periodt_21:
(Start: 31 @20008 has 60 MA's), (43, 20059), (45, 20065), (52, 20134), (65, 20233), (67, 20254),

Gene: Pharb_25 Start: 20852, Stop: 21169, Start Num: 40
Candidate Starts for Pharb_25:
(6, 20342), (8, 20363), (10, 20495), (11, 20567), (Start: 40 @20852 has 134 MA's), (60, 20969), (79, 21098),

Gene: PhelpsODU_25 Start: 19781, Stop: 20092, Start Num: 39
Candidate Starts for PhelpsODU_25:
(Start: 39 @19781 has 26 MA's), (50, 19841), (64, 19925), (79, 20027),

Gene: Phish_21 Start: 20008, Stop: 20442, Start Num: 31
Candidate Starts for Phish_21:
(Start: 31 @20008 has 60 MA's), (43, 20059), (45, 20065), (52, 20134), (65, 20233), (67, 20254),

Gene: Phrank_25 Start: 19734, Stop: 20045, Start Num: 39
Candidate Starts for Phrank_25:
(Start: 39 @19734 has 26 MA's), (50, 19794), (64, 19878), (79, 19980),

Gene: Phreak_21 Start: 20008, Stop: 20442, Start Num: 31
Candidate Starts for Phreak_21:
(Start: 31 @20008 has 60 MA's), (43, 20059), (45, 20065), (52, 20134), (65, 20233), (67, 20254),

Gene: Piatt_26 Start: 20603, Stop: 20911, Start Num: 40
Candidate Starts for Piatt_26:
(Start: 40 @20603 has 134 MA's), (43, 20633), (58, 20711), (64, 20747),

Gene: PinkYoshi_21 Start: 19999, Stop: 20433, Start Num: 31
Candidate Starts for PinkYoshi_21:
(Start: 31 @19999 has 60 MA's), (43, 20050), (45, 20056), (52, 20125), (65, 20224), (67, 20245),

Gene: Pinnie_22 Start: 20768, Stop: 21181, Start Num: 40
Candidate Starts for Pinnie_22:
(23, 20687), (27, 20723), (Start: 40 @20768 has 134 MA's), (65, 20981), (67, 21002),

Gene: Pixie_25 Start: 20785, Stop: 21102, Start Num: 40
Candidate Starts for Pixie_25:
(Start: 40 @20785 has 134 MA's), (70, 20974), (71, 20980),

Gene: Plagueis_21 Start: 20008, Stop: 20442, Start Num: 31
Candidate Starts for Plagueis_21:
(Start: 31 @20008 has 60 MA's), (43, 20059), (45, 20065), (52, 20134), (65, 20233), (67, 20254),

Gene: Pokerus_25 Start: 20520, Stop: 20828, Start Num: 40
Candidate Starts for Pokerus_25:
(Start: 40 @20520 has 134 MA's), (43, 20550), (58, 20628), (64, 20664),

Gene: Prithvi_26 Start: 20537, Stop: 20845, Start Num: 40
Candidate Starts for Prithvi_26:
(Start: 40 @20537 has 134 MA's), (43, 20567), (58, 20645), (64, 20681), (75, 20765),

Gene: Psycho_25 Start: 20890, Stop: 21207, Start Num: 37
Candidate Starts for Psycho_25:
(Start: 37 @20890 has 22 MA's), (59, 21004), (66, 21061), (86, 21181),

Gene: QuincyRose_25 Start: 20583, Stop: 20891, Start Num: 40
Candidate Starts for QuincyRose_25:
(Start: 40 @20583 has 134 MA's), (43, 20613), (58, 20691), (64, 20727),

Gene: Rabbs_21 Start: 20095, Stop: 20526, Start Num: 31
Candidate Starts for Rabbs_21:
(Start: 31 @20095 has 60 MA's), (45, 20149), (52, 20218), (65, 20317), (67, 20338), (80, 20407),

Gene: Ramen_26 Start: 20569, Stop: 20877, Start Num: 40
Candidate Starts for Ramen_26:
(Start: 40 @20569 has 134 MA's), (43, 20599), (58, 20677), (64, 20713),

Gene: Rando14_25 Start: 19578, Stop: 19880, Start Num: 37
Candidate Starts for Rando14_25:
(Start: 37 @19578 has 22 MA's), (59, 19692), (64, 19722), (66, 19749), (80, 19827), (86, 19869),

Gene: Rapunzel97_26 Start: 20570, Stop: 20878, Start Num: 40
Candidate Starts for Rapunzel97_26:
(Start: 40 @20570 has 134 MA's), (43, 20600), (58, 20678), (64, 20714),

Gene: Remy19_21 Start: 20008, Stop: 20442, Start Num: 31
Candidate Starts for Remy19_21:
(Start: 31 @20008 has 60 MA's), (43, 20059), (45, 20065), (52, 20134), (65, 20233), (67, 20254),

Gene: Renaissance_21 Start: 20008, Stop: 20442, Start Num: 31
Candidate Starts for Renaissance_21:
(Start: 31 @20008 has 60 MA's), (43, 20059), (45, 20065), (52, 20134), (65, 20233), (67, 20254),

Gene: Reptar3000_27 Start: 21775, Stop: 22020, Start Num: 40
Candidate Starts for Reptar3000_27:
(Start: 40 @21775 has 134 MA's), (60, 21892), (64, 21919), (75, 22003),

Gene: Richo_26 Start: 19927, Stop: 20229, Start Num: 40
Candidate Starts for Richo_26:
(Start: 40 @19927 has 134 MA's), (45, 19963), (50, 19987), (58, 20035), (59, 20041), (64, 20071),

Gene: Rosmarinus_26 Start: 20591, Stop: 20899, Start Num: 40
Candidate Starts for Rosmarinus_26:
(Start: 40 @20591 has 134 MA's), (43, 20621), (58, 20699), (64, 20735),

Gene: Ruthiejr_26 Start: 21666, Stop: 21911, Start Num: 40
Candidate Starts for Ruthiejr_26:
(Start: 40 @21666 has 134 MA's),

Gene: SamScheppers_25 Start: 21573, Stop: 21818, Start Num: 40
Candidate Starts for SamScheppers_25:
(Start: 40 @21573 has 134 MA's), (75, 21801),

Gene: Scarlett_25 Start: 19808, Stop: 20110, Start Num: 39

Candidate Starts for Scarlett_25:

(Start: 39 @19808 has 26 MA's), (53, 19871), (64, 19952),

Gene: Schiebel_21 Start: 20008, Stop: 20442, Start Num: 31

Candidate Starts for Schiebel_21:

(Start: 31 @20008 has 60 MA's), (43, 20059), (45, 20065), (52, 20134), (65, 20233), (67, 20254),

Gene: SgtBeansprout_22 Start: 20111, Stop: 20413, Start Num: 40

Candidate Starts for SgtBeansprout_22:

(Start: 40 @20111 has 134 MA's), (58, 20219), (59, 20225), (64, 20255), (82, 20375),

Gene: ShaboiShabazz_21 Start: 20008, Stop: 20442, Start Num: 31

Candidate Starts for ShaboiShabazz_21:

(Start: 31 @20008 has 60 MA's), (43, 20059), (45, 20065), (52, 20134), (65, 20233), (67, 20254),

Gene: Shadow1_24 Start: 19608, Stop: 19919, Start Num: 39

Candidate Starts for Shadow1_24:

(Start: 39 @19608 has 26 MA's), (50, 19668), (55, 19680), (64, 19752),

Gene: Shaobing_26 Start: 19927, Stop: 20229, Start Num: 40

Candidate Starts for Shaobing_26:

(Start: 40 @19927 has 134 MA's), (45, 19963), (50, 19987), (58, 20035), (59, 20041), (64, 20071),

Gene: ShedlockHolmes_25 Start: 20994, Stop: 21302, Start Num: 40

Candidate Starts for ShedlockHolmes_25:

(Start: 40 @20994 has 134 MA's), (63, 21135), (70, 21183), (71, 21189), (88, 21288),

Gene: ShiaSurprise_26 Start: 20603, Stop: 20911, Start Num: 40

Candidate Starts for ShiaSurprise_26:

(Start: 40 @20603 has 134 MA's), (43, 20633), (58, 20711), (64, 20747),

Gene: SirPhilip_25 Start: 19446, Stop: 19754, Start Num: 39

Candidate Starts for SirPhilip_25:

(Start: 39 @19446 has 26 MA's), (50, 19506), (58, 19554), (64, 19590), (79, 19692),

Gene: Sizemore_21 Start: 20009, Stop: 20443, Start Num: 31

Candidate Starts for Sizemore_21:

(Start: 31 @20009 has 60 MA's), (43, 20060), (45, 20066), (52, 20135), (65, 20234), (67, 20255),

Gene: Slarp_27 Start: 22045, Stop: 22290, Start Num: 40

Candidate Starts for Slarp_27:

(Start: 40 @22045 has 134 MA's), (75, 22273),

Gene: Slimphazie_26 Start: 20570, Stop: 20878, Start Num: 40

Candidate Starts for Slimphazie_26:

(Start: 40 @20570 has 134 MA's), (43, 20600), (58, 20678), (64, 20714),

Gene: Sneeze_21 Start: 20094, Stop: 20525, Start Num: 31

Candidate Starts for Sneeze_21:

(Start: 31 @20094 has 60 MA's), (45, 20148), (52, 20217), (65, 20316), (67, 20337), (80, 20406),

Gene: SoSeph_24 Start: 21007, Stop: 21324, Start Num: 37

Candidate Starts for SoSeph_24:

(Start: 37 @21007 has 22 MA's), (59, 21121), (64, 21151), (66, 21178), (86, 21298),

Gene: Spock_26 Start: 20603, Stop: 20911, Start Num: 40

Candidate Starts for Spock_26:

(Start: 40 @20603 has 134 MA's), (43, 20633), (58, 20711), (64, 20747),

Gene: Stargaze_21 Start: 20451, Stop: 20828, Start Num: 40

Candidate Starts for Stargaze_21:

(Start: 40 @20451 has 134 MA's), (57, 20568), (66, 20640), (67, 20649), (80, 20718),

Gene: Stinson_26 Start: 20535, Stop: 20807, Start Num: 38

Candidate Starts for Stinson_26:

(Start: 38 @20535 has 2 MA's), (44, 20574), (54, 20616), (55, 20622), (68, 20736), (73, 20760),

Gene: Stinson_27 Start: 20812, Stop: 21120, Start Num: 40

Candidate Starts for Stinson_27:

(28, 20773), (Start: 40 @20812 has 134 MA's), (43, 20842), (50, 20872), (55, 20884), (58, 20920), (64, 20956), (70, 21001), (75, 21040),

Gene: Strobilo_22 Start: 18423, Stop: 18677, Start Num: 40

Candidate Starts for Strobilo_22:

(Start: 40 @18423 has 134 MA's), (43, 18453), (50, 18483), (60, 18540), (75, 18651),

Gene: Sulley_26 Start: 20536, Stop: 20844, Start Num: 40

Candidate Starts for Sulley_26:

(Start: 40 @20536 has 134 MA's), (43, 20566), (58, 20644), (64, 20680),

Gene: Sunflower1121_24 Start: 19620, Stop: 19931, Start Num: 39

Candidate Starts for Sunflower1121_24:

(Start: 39 @19620 has 26 MA's), (50, 19680), (55, 19692), (64, 19764),

Gene: Sweets_21 Start: 20003, Stop: 20437, Start Num: 31

Candidate Starts for Sweets_21:

(Start: 31 @20003 has 60 MA's), (43, 20054), (45, 20060), (52, 20129), (65, 20228), (67, 20249),

Gene: Syra333_25 Start: 19715, Stop: 20026, Start Num: 39

Candidate Starts for Syra333_25:

(Start: 39 @19715 has 26 MA's), (50, 19775), (64, 19859), (65, 19874), (70, 19904),

Gene: TBond007_25 Start: 20784, Stop: 21101, Start Num: 40

Candidate Starts for TBond007_25:

(Start: 40 @20784 has 134 MA's), (70, 20973), (71, 20979), (88, 21078),

Gene: TClif_25 Start: 19775, Stop: 20077, Start Num: 40

Candidate Starts for TClif_25:

(14, 19538), (Start: 40 @19775 has 134 MA's), (50, 19835), (55, 19847), (64, 19919),

Gene: TM4_22 Start: 18489, Stop: 18743, Start Num: 40

Candidate Starts for TM4_22:

(Start: 40 @18489 has 134 MA's), (43, 18519), (50, 18549), (56, 18564), (60, 18606), (75, 18717),

Gene: TPA4_23 Start: 21250, Stop: 21615, Start Num: 38

Candidate Starts for TPA4_23:

(1, 20305), (3, 20443), (4, 20446), (7, 20767), (9, 20902), (Start: 38 @21250 has 2 MA's), (54, 21328), (56, 21337), (58, 21370), (62, 21400), (65, 21424), (90, 21592),

Gene: Tachez_26 Start: 20532, Stop: 20840, Start Num: 40

Candidate Starts for Tachez_26:

(Start: 40 @20532 has 134 MA's), (43, 20562), (58, 20640), (64, 20676),

Gene: Taheera_21 Start: 20103, Stop: 20534, Start Num: 31

Candidate Starts for Taheera_21:

(Start: 31 @20103 has 60 MA's), (45, 20157), (52, 20226), (65, 20325), (67, 20346), (80, 20415),

Gene: TaiwanKao_27 Start: 20543, Stop: 20851, Start Num: 40

Candidate Starts for TaiwanKao_27:

(Start: 40 @20543 has 134 MA's), (43, 20573), (58, 20651), (64, 20687), (75, 20771),

Gene: Taquito_25 Start: 21654, Stop: 21899, Start Num: 40

Candidate Starts for Taquito_25:

(Start: 40 @21654 has 134 MA's), (75, 21882),

Gene: Terror_21 Start: 20103, Stop: 20534, Start Num: 31

Candidate Starts for Terror_21:

(Start: 31 @20103 has 60 MA's), (45, 20157), (52, 20226), (65, 20325), (67, 20346), (80, 20415),

Gene: Thyatira_24 Start: 20859, Stop: 21176, Start Num: 37

Candidate Starts for Thyatira_24:

(Start: 37 @20859 has 22 MA's), (59, 20973), (64, 21003), (66, 21030), (86, 21150),

Gene: Tierra_25 Start: 20455, Stop: 20766, Start Num: 39

Candidate Starts for Tierra_25:

(Start: 39 @20455 has 26 MA's), (50, 20515), (64, 20599), (79, 20701),

Gene: TingHuaYa_26 Start: 19869, Stop: 20177, Start Num: 40

Candidate Starts for TingHuaYa_26:

(Start: 40 @19869 has 134 MA's), (50, 19929), (64, 20013), (79, 20115),

Gene: Tiri_26 Start: 20575, Stop: 20883, Start Num: 40

Candidate Starts for Tiri_26:

(Start: 40 @20575 has 134 MA's), (43, 20605), (58, 20683), (64, 20719),

Gene: TomBrady_21 Start: 20009, Stop: 20443, Start Num: 31

Candidate Starts for TomBrady_21:

(Start: 31 @20009 has 60 MA's), (43, 20060), (45, 20066), (52, 20135), (65, 20234), (67, 20255),

Gene: Topper_26 Start: 20603, Stop: 20911, Start Num: 40

Candidate Starts for Topper_26:

(Start: 40 @20603 has 134 MA's), (43, 20633), (58, 20711), (64, 20747),

Gene: Torres_22 Start: 20111, Stop: 20413, Start Num: 40

Candidate Starts for Torres_22:

(Start: 40 @20111 has 134 MA's), (58, 20219), (59, 20225), (64, 20255), (82, 20375),

Gene: TreyKay_26 Start: 20537, Stop: 20845, Start Num: 40

Candidate Starts for TreyKay_26:
(Start: 40 @20537 has 134 MA's), (43, 20567), (58, 20645), (64, 20681), (75, 20765),

Gene: TribelTrouble_24 Start: 20821, Stop: 21129, Start Num: 40
Candidate Starts for TribelTrouble_24:
(Start: 40 @20821 has 134 MA's), (64, 20965), (71, 21016), (81, 21073), (88, 21115),

Gene: TruffulaTree_26 Start: 20566, Stop: 20874, Start Num: 40
Candidate Starts for TruffulaTree_26:
(Start: 40 @20566 has 134 MA's), (43, 20596), (58, 20674), (63, 20707), (64, 20710),

Gene: Twitch_26 Start: 20603, Stop: 20911, Start Num: 40
Candidate Starts for Twitch_26:
(Start: 40 @20603 has 134 MA's), (43, 20633), (58, 20711), (64, 20747),

Gene: Unicorn_25 Start: 19781, Stop: 20092, Start Num: 39
Candidate Starts for Unicorn_25:
(Start: 39 @19781 has 26 MA's), (50, 19841), (64, 19925), (79, 20027),

Gene: Validus_26 Start: 19858, Stop: 20166, Start Num: 40
Candidate Starts for Validus_26:
(Start: 40 @19858 has 134 MA's), (50, 19918), (64, 20002), (75, 20086), (79, 20104),

Gene: Veliki_26 Start: 20606, Stop: 20914, Start Num: 40
Candidate Starts for Veliki_26:
(Start: 40 @20606 has 134 MA's), (43, 20636), (58, 20714), (64, 20750),

Gene: Waterfoul_24 Start: 20880, Stop: 21197, Start Num: 37
Candidate Starts for Waterfoul_24:
(Start: 37 @20880 has 22 MA's), (59, 20994), (64, 21024), (66, 21051), (86, 21171),

Gene: Wendigo_21 Start: 20008, Stop: 20442, Start Num: 31
Candidate Starts for Wendigo_21:
(Start: 31 @20008 has 60 MA's), (43, 20059), (45, 20065), (52, 20134), (65, 20233), (67, 20254),

Gene: Wintermute_27 Start: 22034, Stop: 22279, Start Num: 40
Candidate Starts for Wintermute_27:
(Start: 40 @22034 has 134 MA's), (75, 22262),

Gene: Ximenita_26 Start: 19893, Stop: 20204, Start Num: 39
Candidate Starts for Ximenita_26:
(Start: 39 @19893 has 26 MA's), (50, 19953), (64, 20037), (65, 20052), (70, 20082),

Gene: Y10_27 Start: 22034, Stop: 22279, Start Num: 40
Candidate Starts for Y10_27:
(Start: 40 @22034 has 134 MA's), (75, 22262),

Gene: Y2_27 Start: 22034, Stop: 22279, Start Num: 40
Candidate Starts for Y2_27:
(Start: 40 @22034 has 134 MA's), (75, 22262),

Gene: YoureAdopted_25 Start: 20539, Stop: 20847, Start Num: 40
Candidate Starts for YoureAdopted_25:

(Start: 40 @20539 has 134 MA's), (43, 20569), (58, 20647), (64, 20683),

Gene: Yuna_27 Start: 20510, Stop: 20818, Start Num: 40

Candidate Starts for Yuna_27:

(Start: 40 @20510 has 134 MA's), (64, 20654), (79, 20756),

Gene: Yunkel11_26 Start: 19789, Stop: 20097, Start Num: 40

Candidate Starts for Yunkel11_26:

(Start: 40 @19789 has 134 MA's), (43, 19819), (58, 19897), (64, 19933),

Gene: Zabiza_26 Start: 20570, Stop: 20878, Start Num: 40

Candidate Starts for Zabiza_26:

(Start: 40 @20570 has 134 MA's), (43, 20600), (58, 20678), (64, 20714),

Gene: Zavala_26 Start: 20545, Stop: 20853, Start Num: 40

Candidate Starts for Zavala_26:

(Start: 40 @20545 has 134 MA's), (43, 20575), (58, 20653), (64, 20689),

Gene: ZoMa_21 Start: 20008, Stop: 20442, Start Num: 31

Candidate Starts for ZoMa_21:

(Start: 31 @20008 has 60 MA's), (43, 20059), (45, 20065), (52, 20134), (65, 20233), (67, 20254),

Gene: ZoeJ_22 Start: 18364, Stop: 18618, Start Num: 40

Candidate Starts for ZoeJ_22:

(35, 18352), (Start: 40 @18364 has 134 MA's), (43, 18394), (60, 18481), (75, 18592),

Gene: Zombie_21 Start: 20008, Stop: 20442, Start Num: 31

Candidate Starts for Zombie_21:

(Start: 31 @20008 has 60 MA's), (43, 20059), (45, 20065), (52, 20134), (65, 20233), (67, 20254),