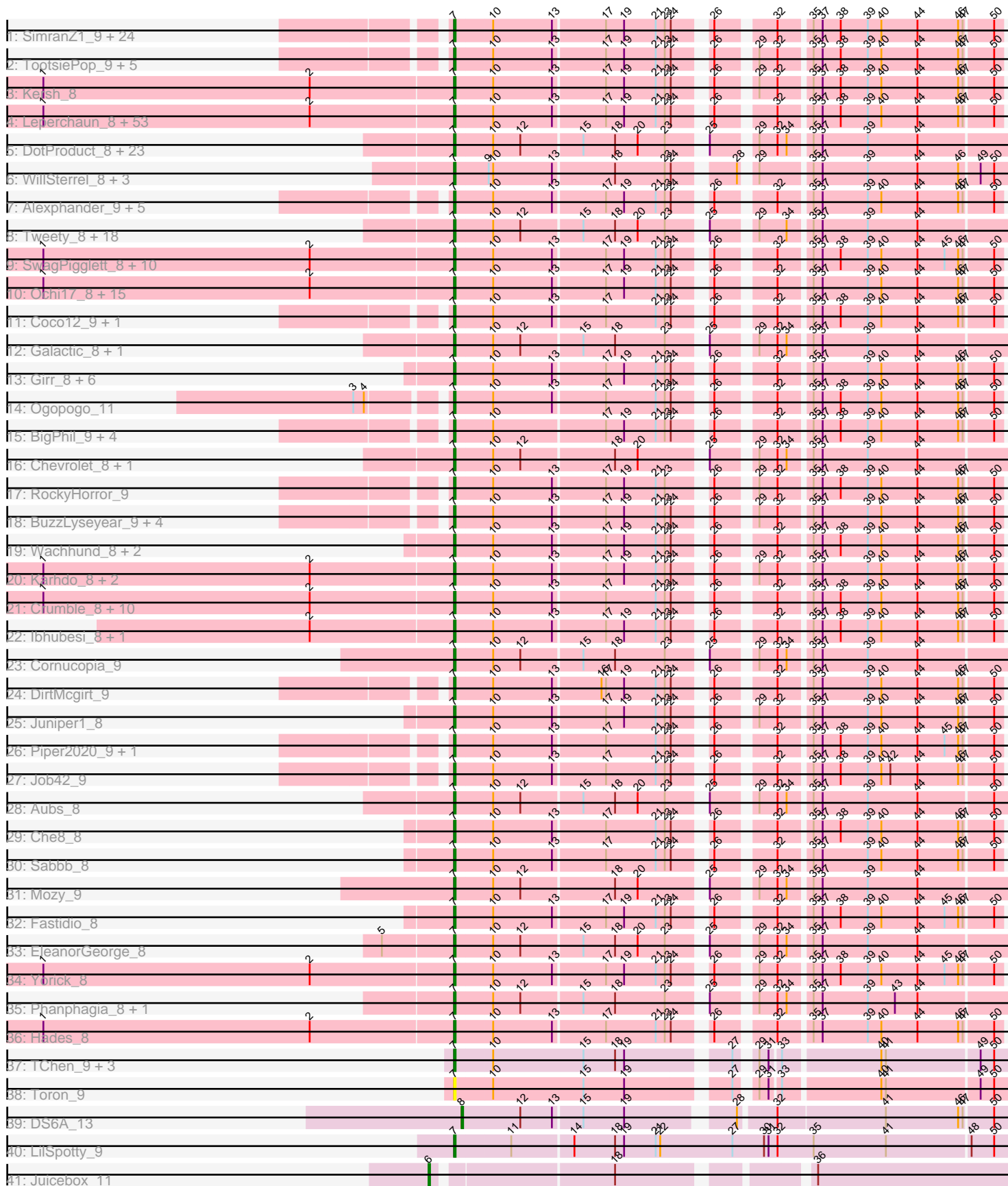


Pham 196274



Note: Tracks are now grouped by subcluster and scaled. Switching in subcluster is indicated by changes in track color. Track scale is now set by default to display the region 30 bp upstream of start 1 to 30 bp downstream of the last possible start. If this default region is judged to be packed too tightly with annotated starts, the track will be further scaled to only show that region of the ORF with annotated starts. This action will be indicated by adding "Zoomed" to the title. For starts, yellow indicates the location of called starts comprised solely of Glimmer/GeneMark auto-annotations, green indicates the location of called starts with at least 1 manual gene annotation.

Pham 196274 Report

This analysis was run 12/09/24 on database version 580.

Pham number 196274 has 234 members, 10 are drafts.

Phages represented in each track:

- Track 1 : SimranZ1_9, Leozinho_9, Spikelee_9, Plumbus_9, Frankie_9, Beakin_9, OwlsT2W_9, Boomer_9, Flathead_9, Rialto_9, MulchExplorer_10, Squirty_9, Ramsey_9, Madiba_9, LittleShirley_9, Girafales_9, DosHalletts_9, Starceвич_9, DaWorst_9, Pollywog_9, Kimberlium_9, Hegedechwinu_9, Juice456_9, Quico_9, Totinger_9
- Track 2 : TootsiePop_9, ChickenDinner_9, DocMcStuffins_9, Mova_9, Misha28_9, Tootsieroll_9
- Track 3 : Kersh_8
- Track 4 : Leperchaun_8, Brocalys_8, Koella_8, Dante_8, BodEinwohner17_8, Sandalphon_8, KingMidas_8, Nimbo_8, Scottish_8, Estave1_8, ByChance_8, Eradicator_8, Gandolph_8, PHappiness_8, RedBird_8, Phatniss_8, FreddyB_8, Poenanya_8, Gorge_8, Minnie_8, Saal_8, Mahavrat_8, JoeyJr_8, Llij_8, Empress_8, LilMoolah_8, Dorothy_8, Blexus_8, Radiance_8, Clifton_8, Inventum_8, OldBen_8, Doug_8, Sparkdehlily_8, Geralt_8, RitaG_8, NormanBulbieJr_8, Cabrinians_8, BlueCrab_8, MadMen_8, Sassafras_8, IbOuu_8, Doomphist_8, Daenerys_8, Pacc40_8, TDanisky_8, Rockne_8, Pippy_8, DRBy19_8, Polka14_8, Priscilla_8, DaddyRickover_8, PMC_8, Deb65_8
- Track 5 : DotProduct_8, QuickMath_8, Kenuha5_8, Ardmore_8, Rita_8, Firehouse51_8, DeadP_8, Hamulus_8, SuperGrey_8, Akhila_9, Bipolar_8, KristaRAM_9, Taj_8, MilleniumForce_9, Ms6_8, Emma_8, DillTech15_8, MilanaBonita_9, SG4_8, Wee_8, DLane_8, Guppsters_8, IMPilo_8, SiSi_8
- Track 6 : WillSterrel_8, Spartacus_8, Mutaforma13_8, IrishSherpFalk_8
- Track 7 : Alexphander_9, Lorde_9, Enby_9, UncleRicky_9, Oksu_9, Drago_9
- Track 8 : Tweety_8, Krakatau_9, XFactor_8, PhesterPhotato_8, Ovechkin_8, CaptainTrips_9, Melissauren88_8, PopTart_8, ShroomBoi_8, StAnnes_8, Phalconet_8, MinionDave_9, Fruitloop_8, SassyB_8, Batiatus_8, Chuckly_8, Filuzino_8, Royals2015_8, Whatsapiecost_8
- Track 9 : SwagPiggett_8, Zizzle_8, Lizziana_8, Maravista_8, ShowerHandel_8, Jarcob_8, Nivrat_8, Martik_8, Philus_8, Burwell21_8, ShiLan_8
- Track 10 : Ochi17_8, Fancypants_8, Mattes_8, BobaPhett_8, Seabastian_8, Llama_8, LastJedi_8, AlpineSix_8, Modragons_8, OfUltron_8, Hlubikazi_8, Mandlovu_8, MulchSalad_8, James_8, Jinglebell_8, Strokeseat_8
- Track 11 : Coco12_9, Marker_9
- Track 12 : Galactic_8, LunaBlu_8
- Track 13 : Girr_8, Eish_8, Phasih_8, MisterCuddles_8, Latretium_8, Whouxphf_8, Ruby_8
- Track 14 : Ogopogo_11

- Track 15 : BigPhil_9, Kingsley_9, Cerasum_9, Sarma624_9, Velveteen_9
- Track 16 : Chevrolet_8, ArcusAngelus_8
- Track 17 : RockyHorror_9
- Track 18 : BuzzLyseyear_9, Seagreen_9, JalFarm20_9, Stap_9, Bobi_9
- Track 19 : Wachhund_8, Spoonbill_8, Byougenkin_8
- Track 20 : Karhdo_8, Veteran_8, GUmbie_8
- Track 21 : Crumble_8, Florinda_8, GigiOuiOui_8, Nitzel_9, Bubbles123_8, Zerg_8, OlympiaSaint_8, Donkeykong_8, VRedHorse_8, Moonbeam_8, Mantra_8
- Track 22 : lbhubesi_8, Harley_8
- Track 23 : Cornucopia_9
- Track 24 : DirtMcgirt_9
- Track 25 : Juniper1_8
- Track 26 : Piper2020_9, Awesomesauce_9
- Track 27 : Job42_9
- Track 28 : Aubs_8
- Track 29 : Che8_8
- Track 30 : Sabbb_8
- Track 31 : Mozy_9
- Track 32 : Fastidio_8
- Track 33 : EleanorGeorge_8
- Track 34 : Yorick_8
- Track 35 : Phanphagia_8, Shauna1_8
- Track 36 : Hades_8
- Track 37 : TChen_9, LunaStella_9, ThetaBob_9, Renaud18_9
- Track 38 : Toron_9
- Track 39 : DS6A_13
- Track 40 : LilSpotty_9
- Track 41 : Juicebox_11

Summary of Final Annotations (See graph section above for start numbers):

The start number called the most often in the published annotations is 7, it was called in 222 of the 224 non-draft genes in the pham.

Genes that call this "Most Annotated" start:

- Akhila_9, Alexphander_9, AlpineSix_8, ArcusAngelus_8, Ardmore_8, Aubs_8, Awesomesauce_9, Batiatus_8, Beakin_9, BigPhil_9, Bipolar_8, Blexus_8, BlueCrab_8, BobaPhett_8, Bobi_9, BodEinwohner17_8, Boomer_9, Brocalys_8, Bubbles123_8, Burwell21_8, BuzzLyseyear_9, ByChance_8, Byougenkin_8, Cabrinians_8, CaptainTrips_9, Cerasum_9, Che8_8, Chevrolet_8, ChickenDinner_9, Chuckly_8, Clifton_8, Coco12_9, Cornucopia_9, Crumble_8, DLane_8, DRBy19_8, DaWorst_9, DaddyRickover_8, Daenerys_8, Dante_8, DeadP_8, Deb65_8, DillTech15_8, DirtMcgirt_9, DocMcStuffins_9, Donkeykong_8, Doomphist_8, Dorothy_8, DosHalletts_9, DotProduct_8, Doug_8, Drago_9, Eish_8, EleanorGeorge_8, Emma_8, Empress_8, Enby_9, Eradicator_8, Estave1_8, Fancypants_8, Fastidio_8, Filuzino_8, Firehouse51_8, Flathead_9, Florinda_8, Frankie_9, FreddyB_8, Fruitloop_8, GUmbie_8, Galactic_8, Gandalph_8, Geralt_8, GigiOuiOui_8, Girfales_9, Girr_8, Gorge_8, Guppsters_8, Hades_8, Hamulus_8, Harley_8, Hegedechwinu_9, Hlubikazi_8, IMPilo_8, lbOuu_8, lbhubesi_8, Inventum_8, IrishSherpFalk_8, JalFarm20_9, James_8, Jarcob_8, Jinglebell_8,

Job42_9, JoeyJr_8, Juice456_9, Juniper1_8, Karhdo_8, Kenuha5_8, Kersh_8, Kimberlium_9, KingMidas_8, Kingsley_9, Koella_8, Krakatau_9, KristaRAM_9, LastJedi_8, Latretium_8, Leozinho_9, Leperchaun_8, LilMoolah_8, LilSpotty_9, LittleShirley_9, Lizziana_8, Llama_8, Llij_8, Lorde_9, LunaBlu_8, LunaStella_9, MadMen_8, Madiba_9, Mahavrat_8, Mandlovu_8, Mantra_8, Maravista_8, Marker_9, Martik_8, Mattes_8, Melissauren88_8, MilanaBonita_9, MilleniumForce_9, MinionDave_9, Minnie_8, Misha28_9, MisterCuddles_8, Modragons_8, Moonbeam_8, Mova_9, Mozy_9, Ms6_8, MulchExplorer_10, MulchSalad_8, Mutaforma13_8, Nimbo_8, Nitzel_9, Nivrat_8, NormanBulbieJr_8, Ochi17_8, OfUltron_8, Ogopogo_11, Oksu_9, OldBen_8, OlympiaSaint_8, Ovechkin_8, OwlsT2W_9, PHappiness_8, PMC_8, Pacc40_8, Phalconet_8, Phanphagia_8, Phasih_8, Phatniss_8, PhesterPhotato_8, Philus_8, Piper2020_9, Pippy_8, Plumbus_9, Poenanya_8, Polka14_8, Pollywog_9, PopTart_8, Priscilla_8, QuickMath_8, Quico_9, Radiance_8, Ramsey_9, RedBird_8, Renaud18_9, Rialto_9, RitaG_8, Rita_8, Rockne_8, RockyHorror_9, Royals2015_8, Ruby_8, SG4_8, Saal_8, Sabbb_8, Sandalphon_8, Sarma624_9, Sassafras_8, SassyB_8, Scottish_8, Sebastian_8, Seagreen_9, Shauna1_8, ShiLan_8, ShowerHandel_8, ShroomBoi_8, SiSi_8, SimranZ1_9, Sparkdehlily_8, Spartacus_8, Spikelee_9, Spoonbill_8, Squirty_9, StAnnes_8, Stap_9, Starceвич_9, Strokeseat_8, SuperGrey_8, SwagPiggett_8, TChen_9, TDanisky_8, Taj_8, ThetaBob_9, TootsiePop_9, Tootsieroll_9, Toron_9, Totinger_9, Tweety_8, UncleRicky_9, VRedHorse_8, Velveteen_9, Veteran_8, Wachhund_8, Wee_8, Whatsapiecost_8, Whouxphf_8, WillSterrel_8, XFactor_8, Yorick_8, Zerg_8, Zizzle_8,

Genes that have the "Most Annotated" start but do not call it:

-

Genes that do not have the "Most Annotated" start:

- DS6A_13, Juicebox_11,

Summary by start number:

Start 6:

- Found in 1 of 234 (0.4%) of genes in pham
- Manual Annotations of this start: 1 of 224
- Called 100.0% of time when present
- Phage (with cluster) where this start called: Juicebox_11 (singleton),

Start 7:

- Found in 232 of 234 (99.1%) of genes in pham
- Manual Annotations of this start: 222 of 224
- Called 100.0% of time when present
- Phage (with cluster) where this start called: Akhila_9 (F1), Alexphander_9 (F1), AlpineSix_8 (F1), ArcusAngelus_8 (F1), Ardmore_8 (F1), Aubs_8 (F1), Awesomesauce_9 (F1), Batiatus_8 (F1), Beakin_9 (F1), BigPhil_9 (F1), Bipolar_8 (F1), Blexus_8 (F1), BlueCrab_8 (F1), BobaPhett_8 (F1), Bobi_9 (F1), BodEinwohner17_8 (F1), Boomer_9 (F1), Brocalys_8 (F1), Bubbles123_8 (F1), Burwell21_8 (F1), BuzzLyseyear_9 (F1), ByChance_8 (F1), Byougenkin_8 (F1), Cabrinians_8 (F1), CaptainTrips_9 (F1), Cerasum_9 (F1), Che8_8 (F1), Chevrolet_8 (F1), ChickenDinner_9 (F1), Chuckly_8 (F1), Clifton_8 (F1), Coco12_9 (F1), Cornucopia_9 (F1), Crumble_8 (F1), DLane_8 (F1), DRBy19_8 (F1), DaWorst_9 (F1), DaddyRickover_8 (F1), Daenerys_8 (F1), Dante_8 (F1), DeadP_8 (F1), Deb65_8 (F1), DillTech15_8 (F1), DirtMcgirt_9 (F1), DocMcStuffins_9 (F1),

Donkeykong_8 (F1), Doomphist_8 (F1), Dorothy_8 (F1), DosHalletts_9 (F1),
 DotProduct_8 (F1), Doug_8 (F1), Drago_9 (F1), Eish_8 (F1), EleanorGeorge_8 (F1),
 Emma_8 (F1), Empress_8 (F1), Enby_9 (F1), Eradicator_8 (F1), Estave1_8 (F1),
 Fancypants_8 (F1), Fastidio_8 (F1), Filuzino_8 (F1), Firehouse51_8 (F1), Flathead_9
 (F1), Florinda_8 (F1), Frankie_9 (F1), FreddyB_8 (F1), Fruitloop_8 (F1), GUmble_8
 (F1), Galactic_8 (F1), Gandolph_8 (F1), Geralt_8 (F1), GigiOuiOui_8 (F1),
 Girafales_9 (F1), Girr_8 (F1), Gorge_8 (F1), Guppsters_8 (F1), Hades_8 (F1),
 Hamulus_8 (F1), Harley_8 (F1), Hegedechwinu_9 (F1), Hlubikazi_8 (F1), IMpilo_8
 (F1), IbOuu_8 (F1), Ibhubesi_8 (F1), Inventum_8 (F1), IrishSherpFalk_8 (F1),
 JalFarm20_9 (F1), James_8 (F1), Jarcob_8 (F1), Jinglebell_8 (F1), Job42_9 (F1),
 JoeyJr_8 (F1), Juice456_9 (F1), Juniper1_8 (F1), Karhdo_8 (F1), Kenuha5_8 (F1),
 Kersh_8 (F1), Kimberlium_9 (F1), KingMidas_8 (F1), Kingsley_9 (F1), Koella_8 (F1),
 Krakatau_9 (F1), KristaRAM_9 (F1), LastJedi_8 (F1), Latretium_8 (F1), Leozinho_9
 (F1), Leperchaun_8 (F1), LilMoolah_8 (F1), LilSpotty_9 (singleton), LittleShirley_9
 (F1), Lizziana_8 (F1), Llama_8 (F1), Llij_8 (F1), Lorde_9 (F1), LunaBlu_8 (F1),
 LunaStella_9 (F4), MadMen_8 (F1), Madiba_9 (F1), Mahavrat_8 (F1), Mandlovu_8
 (F1), Mantra_8 (F1), Maravista_8 (F1), Marker_9 (F1), Martik_8 (F1), Mattes_8 (F1),
 Melissauren88_8 (F1), MilanaBonita_9 (F1), MilleniumForce_9 (F1), MinionDave_9
 (F1), Minnie_8 (F1), Misha28_9 (F1), MisterCuddles_8 (F1), Modragons_8 (F1),
 Moonbeam_8 (F1), Mova_9 (F1), Mozy_9 (F1), Ms6_8 (F1), MulchExplorer_10 (F1),
 MulchSalad_8 (F1), Mutaforma13_8 (F1), Nimbo_8 (F1), Nitzel_9 (F1), Nivrat_8 (F1),
 NormanBulbieJr_8 (F1), Ochi17_8 (F1), OfUltron_8 (F1), Ogopogo_11 (F1), Oksu_9
 (F1), OldBen_8 (F1), OlympiaSaint_8 (F1), Ovechkin_8 (F1), OwisT2W_9 (F1),
 PHappiness_8 (F1), PMC_8 (F1), Pacc40_8 (F1), Phalconet_8 (F1), Phanphagia_8
 (F1), Phasih_8 (F1), Phatniss_8 (F1), PhesterPotato_8 (F1), Philus_8 (F1),
 Piper2020_9 (F1), Pippy_8 (F1), Plumbus_9 (F1), Poenanya_8 (F1), Polka14_8 (F1),
 Pollywog_9 (F1), PopTart_8 (F1), Priscilla_8 (F1), QuickMath_8 (F1), Quico_9 (F1),
 Radiance_8 (F1), Ramsey_9 (F1), RedBird_8 (F1), Renaud18_9 (F4), Rialto_9 (F1),
 RitaG_8 (F1), Rita_8 (F1), Rockne_8 (F1), RockyHorror_9 (F1), Royals2015_8 (F1),
 Ruby_8 (F1), SG4_8 (F1), Saal_8 (F1), Sabbb_8 (F1), Sandalphon_8 (F1),
 Sarma624_9 (F1), Sassafras_8 (F1), SassyB_8 (F1), Scottish_8 (F1), Seabastian_8
 (F1), Seagreen_9 (F1), Shauna1_8 (F1), ShiLan_8 (F1), ShowerHandel_8 (F1),
 ShroomBoi_8 (F1), SiSi_8 (F1), SimranZ1_9 (F1), Sparkdehlily_8 (F1), Spartacus_8
 (F1), Spikelee_9 (F1), Spoonbill_8 (F1), Squirty_9 (F3), StAnnes_8 (F1), Stap_9 (F1),
 Starcevic_9 (F1), Strokeseat_8 (F1), SuperGrey_8 (F1), SwagPigglett_8 (F1),
 TChen_9 (F4), TDanisky_8 (F1), Taj_8 (F1), ThetaBob_9 (F4), TootsiePop_9 (F1),
 Tootsieroll_9 (F1), Toron_9 (F6), Totinger_9 (F1), Tweety_8 (F1), UncleRicky_9 (F1),
 VRedHorse_8 (F1), Velveteen_9 (F1), Veteran_8 (F1), Wachhund_8 (F1), Wee_8
 (F1), Whatsapiecost_8 (F1), Whouxphf_8 (F1), WillSterrel_8 (F1), XFactor_8 (F1),
 Yorick_8 (F1), Zerg_8 (F1), Zizzle_8 (F1),

Start 8:

- Found in 1 of 234 (0.4%) of genes in pham
- Manual Annotations of this start: 1 of 224
- Called 100.0% of time when present
- Phage (with cluster) where this start called: DS6A_13 (singleton),

Summary by clusters:

There are 6 clusters represented in this pham: F1, singleton, F3, F4, F6, F,

Info for manual annotations of cluster F1:

- Start number 7 was manually annotated 216 times for cluster F1.

Info for manual annotations of cluster F3:

- Start number 7 was manually annotated 1 time for cluster F3.

Info for manual annotations of cluster F4:

- Start number 7 was manually annotated 4 times for cluster F4.

Gene Information:

Gene: Akhila_9 Start: 7094, Stop: 7426, Start Num: 7

Candidate Starts for Akhila_9:

(Start: 7 @7094 has 222 MA's), (10, 7118), (12, 7136), (15, 7175), (18, 7196), (20, 7211), (23, 7229), (25, 7247), (29, 7271), (32, 7283), (34, 7289), (35, 7301), (37, 7307), (39, 7337), (44, 7370),

Gene: Alexphander_9 Start: 6296, Stop: 6625, Start Num: 7

Candidate Starts for Alexphander_9:

(Start: 7 @6296 has 222 MA's), (10, 6320), (13, 6359), (17, 6392), (19, 6404), (21, 6425), (23, 6431), (24, 6434), (26, 6452), (32, 6485), (35, 6503), (37, 6509), (39, 6539), (40, 6548), (44, 6572), (46, 6599), (47, 6602), (50, 6620),

Gene: AlpineSix_8 Start: 6442, Stop: 6771, Start Num: 7

Candidate Starts for AlpineSix_8:

(1, 6172), (2, 6349), (Start: 7 @6442 has 222 MA's), (10, 6466), (13, 6505), (17, 6538), (19, 6550), (21, 6571), (23, 6577), (24, 6580), (26, 6598), (32, 6631), (35, 6649), (37, 6655), (39, 6685), (40, 6694), (44, 6718), (46, 6745), (47, 6748), (50, 6766),

Gene: ArcusAngelus_8 Start: 6436, Stop: 6768, Start Num: 7

Candidate Starts for ArcusAngelus_8:

(Start: 7 @6436 has 222 MA's), (10, 6460), (12, 6478), (18, 6538), (20, 6553), (25, 6589), (29, 6613), (32, 6625), (34, 6631), (35, 6643), (37, 6649), (39, 6679), (44, 6712),

Gene: Ardmore_8 Start: 6446, Stop: 6778, Start Num: 7

Candidate Starts for Ardmore_8:

(Start: 7 @6446 has 222 MA's), (10, 6470), (12, 6488), (15, 6527), (18, 6548), (20, 6563), (23, 6581), (25, 6599), (29, 6623), (32, 6635), (34, 6641), (35, 6653), (37, 6659), (39, 6689), (44, 6722),

Gene: Aubs_8 Start: 6446, Stop: 6778, Start Num: 7

Candidate Starts for Aubs_8:

(Start: 7 @6446 has 222 MA's), (10, 6470), (12, 6488), (15, 6527), (18, 6548), (20, 6563), (23, 6581), (25, 6599), (29, 6623), (32, 6635), (34, 6641), (35, 6653), (37, 6659), (39, 6689), (44, 6722), (50, 6770),

Gene: Awesomesauce_9 Start: 6299, Stop: 6628, Start Num: 7

Candidate Starts for Awesomesauce_9:

(Start: 7 @6299 has 222 MA's), (10, 6323), (13, 6362), (17, 6395), (21, 6428), (23, 6434), (24, 6437), (26, 6455), (32, 6488), (35, 6506), (37, 6512), (38, 6524), (39, 6542), (40, 6551), (44, 6575), (45, 6593), (46, 6602), (47, 6605), (50, 6623),

Gene: Batiatus_8 Start: 6446, Stop: 6778, Start Num: 7

Candidate Starts for Batiatus_8:

(Start: 7 @6446 has 222 MA's), (10, 6470), (12, 6488), (15, 6527), (18, 6548), (20, 6563), (23, 6581), (25, 6599), (29, 6623), (34, 6641), (35, 6653), (37, 6659), (39, 6689), (44, 6722),

Gene: Beakin_9 Start: 6299, Stop: 6628, Start Num: 7

Candidate Starts for Beakin_9:

(Start: 7 @6299 has 222 MA's), (10, 6323), (13, 6362), (17, 6395), (19, 6407), (21, 6428), (23, 6434), (24, 6437), (26, 6455), (32, 6488), (35, 6506), (37, 6512), (38, 6524), (39, 6542), (40, 6551), (44, 6575), (46, 6602), (47, 6605), (50, 6623),

Gene: BigPhil_9 Start: 6295, Stop: 6624, Start Num: 7

Candidate Starts for BigPhil_9:

(Start: 7 @6295 has 222 MA's), (10, 6319), (17, 6391), (19, 6403), (21, 6424), (23, 6430), (24, 6433), (26, 6451), (32, 6484), (35, 6502), (37, 6508), (38, 6520), (39, 6538), (40, 6547), (44, 6571), (46, 6598), (47, 6601), (50, 6619),

Gene: Bipolar_8 Start: 6446, Stop: 6778, Start Num: 7

Candidate Starts for Bipolar_8:

(Start: 7 @6446 has 222 MA's), (10, 6470), (12, 6488), (15, 6527), (18, 6548), (20, 6563), (23, 6581), (25, 6599), (29, 6623), (32, 6635), (34, 6641), (35, 6653), (37, 6659), (39, 6689), (44, 6722),

Gene: Blexus_8 Start: 6459, Stop: 6788, Start Num: 7

Candidate Starts for Blexus_8:

(1, 6189), (2, 6366), (Start: 7 @6459 has 222 MA's), (10, 6483), (13, 6522), (17, 6555), (19, 6567), (21, 6588), (23, 6594), (24, 6597), (26, 6615), (32, 6648), (35, 6666), (37, 6672), (38, 6684), (39, 6702), (40, 6711), (44, 6735), (46, 6762), (47, 6765), (50, 6783),

Gene: BlueCrab_8 Start: 6443, Stop: 6772, Start Num: 7

Candidate Starts for BlueCrab_8:

(1, 6173), (2, 6350), (Start: 7 @6443 has 222 MA's), (10, 6467), (13, 6506), (17, 6539), (19, 6551), (21, 6572), (23, 6578), (24, 6581), (26, 6599), (32, 6632), (35, 6650), (37, 6656), (38, 6668), (39, 6686), (40, 6695), (44, 6719), (46, 6746), (47, 6749), (50, 6767),

Gene: BobaPhett_8 Start: 6435, Stop: 6764, Start Num: 7

Candidate Starts for BobaPhett_8:

(1, 6165), (2, 6342), (Start: 7 @6435 has 222 MA's), (10, 6459), (13, 6498), (17, 6531), (19, 6543), (21, 6564), (23, 6570), (24, 6573), (26, 6591), (32, 6624), (35, 6642), (37, 6648), (39, 6678), (40, 6687), (44, 6711), (46, 6738), (47, 6741), (50, 6759),

Gene: Bobi_9 Start: 6296, Stop: 6625, Start Num: 7

Candidate Starts for Bobi_9:

(Start: 7 @6296 has 222 MA's), (10, 6320), (13, 6359), (17, 6392), (19, 6404), (21, 6425), (23, 6431), (24, 6434), (26, 6452), (29, 6473), (32, 6485), (35, 6503), (37, 6509), (39, 6539), (40, 6548), (44, 6572), (46, 6599), (47, 6602), (50, 6620),

Gene: BodEinwohner17_8 Start: 6443, Stop: 6772, Start Num: 7

Candidate Starts for BodEinwohner17_8:

(1, 6173), (2, 6350), (Start: 7 @6443 has 222 MA's), (10, 6467), (13, 6506), (17, 6539), (19, 6551), (21, 6572), (23, 6578), (24, 6581), (26, 6599), (32, 6632), (35, 6650), (37, 6656), (38, 6668), (39, 6686), (40, 6695), (44, 6719), (46, 6746), (47, 6749), (50, 6767),

Gene: Boomer_9 Start: 6296, Stop: 6625, Start Num: 7

Candidate Starts for Boomer_9:

(Start: 7 @6296 has 222 MA's), (10, 6320), (13, 6359), (17, 6392), (19, 6404), (21, 6425), (23, 6431), (24, 6434), (26, 6452), (32, 6485), (35, 6503), (37, 6509), (38, 6521), (39, 6539), (40, 6548), (44, 6572), (46, 6599), (47, 6602), (50, 6620),

Gene: Brocalys_8 Start: 6432, Stop: 6761, Start Num: 7

Candidate Starts for Brocalys_8:

(1, 6162), (2, 6339), (Start: 7 @6432 has 222 MA's), (10, 6456), (13, 6495), (17, 6528), (19, 6540), (21, 6561), (23, 6567), (24, 6570), (26, 6588), (32, 6621), (35, 6639), (37, 6645), (38, 6657), (39, 6675), (40, 6684), (44, 6708), (46, 6735), (47, 6738), (50, 6756),

Gene: Bubbles123_8 Start: 6462, Stop: 6791, Start Num: 7

Candidate Starts for Bubbles123_8:

(1, 6192), (2, 6369), (Start: 7 @6462 has 222 MA's), (10, 6486), (13, 6525), (17, 6558), (21, 6591), (23, 6597), (24, 6600), (26, 6618), (32, 6651), (35, 6669), (37, 6675), (38, 6687), (39, 6705), (40, 6714), (44, 6738), (46, 6765), (47, 6768), (50, 6786),

Gene: Burwell21_8 Start: 6443, Stop: 6772, Start Num: 7

Candidate Starts for Burwell21_8:

(1, 6173), (2, 6350), (Start: 7 @6443 has 222 MA's), (10, 6467), (13, 6506), (17, 6539), (19, 6551), (21, 6572), (23, 6578), (24, 6581), (26, 6599), (32, 6632), (35, 6650), (37, 6656), (38, 6668), (39, 6686), (40, 6695), (44, 6719), (45, 6737), (46, 6746), (47, 6749), (50, 6767),

Gene: BuzzLyseyear_9 Start: 6295, Stop: 6624, Start Num: 7

Candidate Starts for BuzzLyseyear_9:

(Start: 7 @6295 has 222 MA's), (10, 6319), (13, 6358), (17, 6391), (19, 6403), (21, 6424), (23, 6430), (24, 6433), (26, 6451), (29, 6472), (32, 6484), (35, 6502), (37, 6508), (39, 6538), (40, 6547), (44, 6571), (46, 6598), (47, 6601), (50, 6619),

Gene: ByChance_8 Start: 6445, Stop: 6774, Start Num: 7

Candidate Starts for ByChance_8:

(1, 6175), (2, 6352), (Start: 7 @6445 has 222 MA's), (10, 6469), (13, 6508), (17, 6541), (19, 6553), (21, 6574), (23, 6580), (24, 6583), (26, 6601), (32, 6634), (35, 6652), (37, 6658), (38, 6670), (39, 6688), (40, 6697), (44, 6721), (46, 6748), (47, 6751), (50, 6769),

Gene: Byougenkin_8 Start: 6433, Stop: 6762, Start Num: 7

Candidate Starts for Byougenkin_8:

(Start: 7 @6433 has 222 MA's), (10, 6457), (13, 6496), (17, 6529), (19, 6541), (21, 6562), (23, 6568), (24, 6571), (26, 6589), (32, 6622), (35, 6640), (37, 6646), (38, 6658), (39, 6676), (40, 6685), (44, 6709), (46, 6736), (47, 6739), (50, 6757),

Gene: Cabrinians_8 Start: 6435, Stop: 6764, Start Num: 7

Candidate Starts for Cabrinians_8:

(1, 6165), (2, 6342), (Start: 7 @6435 has 222 MA's), (10, 6459), (13, 6498), (17, 6531), (19, 6543), (21, 6564), (23, 6570), (24, 6573), (26, 6591), (32, 6624), (35, 6642), (37, 6648), (38, 6660), (39, 6678), (40, 6687), (44, 6711), (46, 6738), (47, 6741), (50, 6759),

Gene: CaptainTrips_9 Start: 7094, Stop: 7426, Start Num: 7

Candidate Starts for CaptainTrips_9:

(Start: 7 @7094 has 222 MA's), (10, 7118), (12, 7136), (15, 7175), (18, 7196), (20, 7211), (23, 7229), (25, 7247), (29, 7271), (34, 7289), (35, 7301), (37, 7307), (39, 7337), (44, 7370),

Gene: Cerasum_9 Start: 6295, Stop: 6624, Start Num: 7

Candidate Starts for Cerasum_9:

(Start: 7 @6295 has 222 MA's), (10, 6319), (17, 6391), (19, 6403), (21, 6424), (23, 6430), (24, 6433), (26, 6451), (32, 6484), (35, 6502), (37, 6508), (38, 6520), (39, 6538), (40, 6547), (44, 6571), (46, 6598), (47, 6601), (50, 6619),

Gene: Che8_8 Start: 6447, Stop: 6776, Start Num: 7

Candidate Starts for Che8_8:

(Start: 7 @6447 has 222 MA's), (10, 6471), (13, 6510), (17, 6543), (21, 6576), (23, 6582), (24, 6585), (26, 6603), (32, 6636), (35, 6654), (37, 6660), (38, 6672), (39, 6690), (40, 6699), (44, 6723), (46, 6750), (47, 6753), (50, 6771),

Gene: Chevrolet_8 Start: 6436, Stop: 6768, Start Num: 7

Candidate Starts for Chevrolet_8:

(Start: 7 @6436 has 222 MA's), (10, 6460), (12, 6478), (18, 6538), (20, 6553), (25, 6589), (29, 6613), (32, 6625), (34, 6631), (35, 6643), (37, 6649), (39, 6679), (44, 6712),

Gene: ChickenDinner_9 Start: 6299, Stop: 6628, Start Num: 7

Candidate Starts for ChickenDinner_9:

(Start: 7 @6299 has 222 MA's), (10, 6323), (13, 6362), (17, 6395), (19, 6407), (21, 6428), (23, 6434), (24, 6437), (26, 6455), (29, 6476), (32, 6488), (35, 6506), (37, 6512), (38, 6524), (39, 6542), (40, 6551), (44, 6575), (46, 6602), (47, 6605), (50, 6623),

Gene: Chuckly_8 Start: 6446, Stop: 6778, Start Num: 7

Candidate Starts for Chuckly_8:

(Start: 7 @6446 has 222 MA's), (10, 6470), (12, 6488), (15, 6527), (18, 6548), (20, 6563), (23, 6581), (25, 6599), (29, 6623), (34, 6641), (35, 6653), (37, 6659), (39, 6689), (44, 6722),

Gene: Clifton_8 Start: 6431, Stop: 6760, Start Num: 7

Candidate Starts for Clifton_8:

(1, 6161), (2, 6338), (Start: 7 @6431 has 222 MA's), (10, 6455), (13, 6494), (17, 6527), (19, 6539), (21, 6560), (23, 6566), (24, 6569), (26, 6587), (32, 6620), (35, 6638), (37, 6644), (38, 6656), (39, 6674), (40, 6683), (44, 6707), (46, 6734), (47, 6737), (50, 6755),

Gene: Coco12_9 Start: 6296, Stop: 6625, Start Num: 7

Candidate Starts for Coco12_9:

(Start: 7 @6296 has 222 MA's), (10, 6320), (13, 6359), (17, 6392), (21, 6425), (23, 6431), (24, 6434), (26, 6452), (32, 6485), (35, 6503), (37, 6509), (38, 6521), (39, 6539), (40, 6548), (44, 6572), (46, 6599), (47, 6602), (50, 6620),

Gene: Cornucopia_9 Start: 6296, Stop: 6628, Start Num: 7

Candidate Starts for Cornucopia_9:

(Start: 7 @6296 has 222 MA's), (10, 6320), (12, 6338), (15, 6377), (18, 6398), (23, 6431), (25, 6449), (29, 6473), (32, 6485), (34, 6491), (35, 6503), (37, 6509), (39, 6539), (44, 6572),

Gene: Crumble_8 Start: 6445, Stop: 6774, Start Num: 7

Candidate Starts for Crumble_8:

(1, 6175), (2, 6352), (Start: 7 @6445 has 222 MA's), (10, 6469), (13, 6508), (17, 6541), (21, 6574), (23, 6580), (24, 6583), (26, 6601), (32, 6634), (35, 6652), (37, 6658), (38, 6670), (39, 6688), (40, 6697), (44, 6721), (46, 6748), (47, 6751), (50, 6769),

Gene: DLane_8 Start: 6447, Stop: 6779, Start Num: 7

Candidate Starts for DLane_8:

(Start: 7 @6447 has 222 MA's), (10, 6471), (12, 6489), (15, 6528), (18, 6549), (20, 6564), (23, 6582), (25, 6600), (29, 6624), (32, 6636), (34, 6642), (35, 6654), (37, 6660), (39, 6690), (44, 6723),

Gene: DRBy19_8 Start: 6459, Stop: 6788, Start Num: 7

Candidate Starts for DRBy19_8:

(1, 6189), (2, 6366), (Start: 7 @6459 has 222 MA's), (10, 6483), (13, 6522), (17, 6555), (19, 6567), (21, 6588), (23, 6594), (24, 6597), (26, 6615), (32, 6648), (35, 6666), (37, 6672), (38, 6684), (39, 6702), (40, 6711), (44, 6735), (46, 6762), (47, 6765), (50, 6783),

Gene: DS6A_13 Start: 9721, Stop: 10056, Start Num: 8

Candidate Starts for DS6A_13:

(Start: 8 @9721 has 1 MA's), (12, 9760), (13, 9781), (15, 9799), (19, 9826), (28, 9886), (32, 9907), (41, 9976), (46, 10024), (47, 10027), (50, 10045),

Gene: DaWorst_9 Start: 6297, Stop: 6626, Start Num: 7

Candidate Starts for DaWorst_9:

(Start: 7 @6297 has 222 MA's), (10, 6321), (13, 6360), (17, 6393), (19, 6405), (21, 6426), (23, 6432), (24, 6435), (26, 6453), (32, 6486), (35, 6504), (37, 6510), (38, 6522), (39, 6540), (40, 6549), (44, 6573), (46, 6600), (47, 6603), (50, 6621),

Gene: DaddyRickover_8 Start: 6443, Stop: 6772, Start Num: 7

Candidate Starts for DaddyRickover_8:

(1, 6173), (2, 6350), (Start: 7 @6443 has 222 MA's), (10, 6467), (13, 6506), (17, 6539), (19, 6551), (21, 6572), (23, 6578), (24, 6581), (26, 6599), (32, 6632), (35, 6650), (37, 6656), (38, 6668), (39, 6686), (40, 6695), (44, 6719), (46, 6746), (47, 6749), (50, 6767),

Gene: Daenerys_8 Start: 6443, Stop: 6772, Start Num: 7

Candidate Starts for Daenerys_8:

(1, 6173), (2, 6350), (Start: 7 @6443 has 222 MA's), (10, 6467), (13, 6506), (17, 6539), (19, 6551), (21, 6572), (23, 6578), (24, 6581), (26, 6599), (32, 6632), (35, 6650), (37, 6656), (38, 6668), (39, 6686), (40, 6695), (44, 6719), (46, 6746), (47, 6749), (50, 6767),

Gene: Dante_8 Start: 6460, Stop: 6789, Start Num: 7

Candidate Starts for Dante_8:

(1, 6190), (2, 6367), (Start: 7 @6460 has 222 MA's), (10, 6484), (13, 6523), (17, 6556), (19, 6568), (21, 6589), (23, 6595), (24, 6598), (26, 6616), (32, 6649), (35, 6667), (37, 6673), (38, 6685), (39, 6703), (40, 6712), (44, 6736), (46, 6763), (47, 6766), (50, 6784),

Gene: DeadP_8 Start: 6446, Stop: 6778, Start Num: 7

Candidate Starts for DeadP_8:

(Start: 7 @6446 has 222 MA's), (10, 6470), (12, 6488), (15, 6527), (18, 6548), (20, 6563), (23, 6581), (25, 6599), (29, 6623), (32, 6635), (34, 6641), (35, 6653), (37, 6659), (39, 6689), (44, 6722),

Gene: Deb65_8 Start: 6443, Stop: 6772, Start Num: 7

Candidate Starts for Deb65_8:

(1, 6173), (2, 6350), (Start: 7 @6443 has 222 MA's), (10, 6467), (13, 6506), (17, 6539), (19, 6551), (21, 6572), (23, 6578), (24, 6581), (26, 6599), (32, 6632), (35, 6650), (37, 6656), (38, 6668), (39, 6686), (40, 6695), (44, 6719), (46, 6746), (47, 6749), (50, 6767),

Gene: DillTech15_8 Start: 6446, Stop: 6778, Start Num: 7

Candidate Starts for DillTech15_8:

(Start: 7 @6446 has 222 MA's), (10, 6470), (12, 6488), (15, 6527), (18, 6548), (20, 6563), (23, 6581), (25, 6599), (29, 6623), (32, 6635), (34, 6641), (35, 6653), (37, 6659), (39, 6689), (44, 6722),

Gene: DirtMcgirt_9 Start: 6298, Stop: 6627, Start Num: 7

Candidate Starts for DirtMcgirt_9:

(Start: 7 @6298 has 222 MA's), (10, 6322), (13, 6361), (16, 6391), (17, 6394), (19, 6406), (21, 6427), (23, 6433), (24, 6436), (26, 6454), (32, 6487), (35, 6505), (37, 6511), (39, 6541), (40, 6550), (44, 6574), (46, 6601), (47, 6604), (50, 6622),

Gene: DocMcStuffins_9 Start: 6299, Stop: 6628, Start Num: 7

Candidate Starts for DocMcStuffins_9:

(Start: 7 @6299 has 222 MA's), (10, 6323), (13, 6362), (17, 6395), (19, 6407), (21, 6428), (23, 6434), (24, 6437), (26, 6455), (29, 6476), (32, 6488), (35, 6506), (37, 6512), (38, 6524), (39, 6542), (40, 6551), (44, 6575), (46, 6602), (47, 6605), (50, 6623),

Gene: Donkeykong_8 Start: 6462, Stop: 6791, Start Num: 7

Candidate Starts for Donkeykong_8:

(1, 6192), (2, 6369), (Start: 7 @6462 has 222 MA's), (10, 6486), (13, 6525), (17, 6558), (21, 6591), (23, 6597), (24, 6600), (26, 6618), (32, 6651), (35, 6669), (37, 6675), (38, 6687), (39, 6705), (40, 6714), (44, 6738), (46, 6765), (47, 6768), (50, 6786),

Gene: Doomphist_8 Start: 6443, Stop: 6772, Start Num: 7

Candidate Starts for Doomphist_8:

(1, 6173), (2, 6350), (Start: 7 @6443 has 222 MA's), (10, 6467), (13, 6506), (17, 6539), (19, 6551), (21, 6572), (23, 6578), (24, 6581), (26, 6599), (32, 6632), (35, 6650), (37, 6656), (38, 6668), (39, 6686), (40, 6695), (44, 6719), (46, 6746), (47, 6749), (50, 6767),

Gene: Dorothy_8 Start: 6443, Stop: 6772, Start Num: 7

Candidate Starts for Dorothy_8:

(1, 6173), (2, 6350), (Start: 7 @6443 has 222 MA's), (10, 6467), (13, 6506), (17, 6539), (19, 6551), (21, 6572), (23, 6578), (24, 6581), (26, 6599), (32, 6632), (35, 6650), (37, 6656), (38, 6668), (39, 6686), (40, 6695), (44, 6719), (46, 6746), (47, 6749), (50, 6767),

Gene: DosHalletts_9 Start: 6296, Stop: 6625, Start Num: 7

Candidate Starts for DosHalletts_9:

(Start: 7 @6296 has 222 MA's), (10, 6320), (13, 6359), (17, 6392), (19, 6404), (21, 6425), (23, 6431), (24, 6434), (26, 6452), (32, 6485), (35, 6503), (37, 6509), (38, 6521), (39, 6539), (40, 6548), (44, 6572), (46, 6599), (47, 6602), (50, 6620),

Gene: DotProduct_8 Start: 6447, Stop: 6779, Start Num: 7

Candidate Starts for DotProduct_8:

(Start: 7 @6447 has 222 MA's), (10, 6471), (12, 6489), (15, 6528), (18, 6549), (20, 6564), (23, 6582), (25, 6600), (29, 6624), (32, 6636), (34, 6642), (35, 6654), (37, 6660), (39, 6690), (44, 6723),

Gene: Doug_8 Start: 6445, Stop: 6774, Start Num: 7

Candidate Starts for Doug_8:

(1, 6175), (2, 6352), (Start: 7 @6445 has 222 MA's), (10, 6469), (13, 6508), (17, 6541), (19, 6553), (21, 6574), (23, 6580), (24, 6583), (26, 6601), (32, 6634), (35, 6652), (37, 6658), (38, 6670), (39, 6688), (40, 6697), (44, 6721), (46, 6748), (47, 6751), (50, 6769),

Gene: Drago_9 Start: 6296, Stop: 6625, Start Num: 7

Candidate Starts for Drago_9:

(Start: 7 @6296 has 222 MA's), (10, 6320), (13, 6359), (17, 6392), (19, 6404), (21, 6425), (23, 6431), (24, 6434), (26, 6452), (32, 6485), (35, 6503), (37, 6509), (39, 6539), (40, 6548), (44, 6572), (46, 6599), (47, 6602), (50, 6620),

Gene: Eish_8 Start: 6433, Stop: 6762, Start Num: 7

Candidate Starts for Eish_8:

(Start: 7 @6433 has 222 MA's), (10, 6457), (13, 6496), (17, 6529), (19, 6541), (21, 6562), (23, 6568), (24, 6571), (26, 6589), (32, 6622), (35, 6640), (37, 6646), (39, 6676), (40, 6685), (44, 6709), (46, 6736), (47, 6739), (50, 6757),

Gene: EleanorGeorge_8 Start: 6446, Stop: 6778, Start Num: 7

Candidate Starts for EleanorGeorge_8:

(5, 6401), (Start: 7 @6446 has 222 MA's), (10, 6470), (12, 6488), (15, 6527), (18, 6548), (20, 6563), (23, 6581), (25, 6599), (29, 6623), (32, 6635), (34, 6641), (35, 6653), (37, 6659), (39, 6689), (44, 6722),

Gene: Emma_8 Start: 6446, Stop: 6778, Start Num: 7

Candidate Starts for Emma_8:

(Start: 7 @6446 has 222 MA's), (10, 6470), (12, 6488), (15, 6527), (18, 6548), (20, 6563), (23, 6581), (25, 6599), (29, 6623), (32, 6635), (34, 6641), (35, 6653), (37, 6659), (39, 6689), (44, 6722),

Gene: Empress_8 Start: 6443, Stop: 6772, Start Num: 7

Candidate Starts for Empress_8:

(1, 6173), (2, 6350), (Start: 7 @6443 has 222 MA's), (10, 6467), (13, 6506), (17, 6539), (19, 6551), (21, 6572), (23, 6578), (24, 6581), (26, 6599), (32, 6632), (35, 6650), (37, 6656), (38, 6668), (39, 6686), (40, 6695), (44, 6719), (46, 6746), (47, 6749), (50, 6767),

Gene: Enby_9 Start: 6296, Stop: 6625, Start Num: 7

Candidate Starts for Enby_9:

(Start: 7 @6296 has 222 MA's), (10, 6320), (13, 6359), (17, 6392), (19, 6404), (21, 6425), (23, 6431), (24, 6434), (26, 6452), (32, 6485), (35, 6503), (37, 6509), (39, 6539), (40, 6548), (44, 6572), (46, 6599), (47, 6602), (50, 6620),

Gene: Eradicator_8 Start: 6444, Stop: 6773, Start Num: 7

Candidate Starts for Eradicator_8:

(1, 6174), (2, 6351), (Start: 7 @6444 has 222 MA's), (10, 6468), (13, 6507), (17, 6540), (19, 6552), (21, 6573), (23, 6579), (24, 6582), (26, 6600), (32, 6633), (35, 6651), (37, 6657), (38, 6669), (39, 6687), (40, 6696), (44, 6720), (46, 6747), (47, 6750), (50, 6768),

Gene: Estave1_8 Start: 6445, Stop: 6774, Start Num: 7

Candidate Starts for Estave1_8:

(1, 6175), (2, 6352), (Start: 7 @6445 has 222 MA's), (10, 6469), (13, 6508), (17, 6541), (19, 6553), (21, 6574), (23, 6580), (24, 6583), (26, 6601), (32, 6634), (35, 6652), (37, 6658), (38, 6670), (39, 6688), (40, 6697), (44, 6721), (46, 6748), (47, 6751), (50, 6769),

Gene: Fancypants_8 Start: 6447, Stop: 6776, Start Num: 7

Candidate Starts for Fancypants_8:

(1, 6177), (2, 6354), (Start: 7 @6447 has 222 MA's), (10, 6471), (13, 6510), (17, 6543), (19, 6555), (21, 6576), (23, 6582), (24, 6585), (26, 6603), (32, 6636), (35, 6654), (37, 6660), (39, 6690), (40, 6699), (44, 6723), (46, 6750), (47, 6753), (50, 6771),

Gene: Fastidio_8 Start: 6446, Stop: 6775, Start Num: 7

Candidate Starts for Fastidio_8:

(Start: 7 @6446 has 222 MA's), (10, 6470), (13, 6509), (17, 6542), (19, 6554), (21, 6575), (23, 6581), (24, 6584), (26, 6602), (32, 6635), (35, 6653), (37, 6659), (38, 6671), (39, 6689), (40, 6698), (44, 6722), (45, 6740), (46, 6749), (47, 6752), (50, 6770),

Gene: Filuzino_8 Start: 6447, Stop: 6779, Start Num: 7

Candidate Starts for Filuzino_8:

(Start: 7 @6447 has 222 MA's), (10, 6471), (12, 6489), (15, 6528), (18, 6549), (20, 6564), (23, 6582), (25, 6600), (29, 6624), (34, 6642), (35, 6654), (37, 6660), (39, 6690), (44, 6723),

Gene: Firehouse51_8 Start: 6446, Stop: 6778, Start Num: 7

Candidate Starts for Firehouse51_8:

(Start: 7 @6446 has 222 MA's), (10, 6470), (12, 6488), (15, 6527), (18, 6548), (20, 6563), (23, 6581), (25, 6599), (29, 6623), (32, 6635), (34, 6641), (35, 6653), (37, 6659), (39, 6689), (44, 6722),

Gene: Flathead_9 Start: 6295, Stop: 6624, Start Num: 7

Candidate Starts for Flathead_9:

(Start: 7 @6295 has 222 MA's), (10, 6319), (13, 6358), (17, 6391), (19, 6403), (21, 6424), (23, 6430), (24, 6433), (26, 6451), (32, 6484), (35, 6502), (37, 6508), (38, 6520), (39, 6538), (40, 6547), (44, 6571), (46, 6598), (47, 6601), (50, 6619),

Gene: Florinda_8 Start: 6463, Stop: 6792, Start Num: 7

Candidate Starts for Florinda_8:

(1, 6193), (2, 6370), (Start: 7 @6463 has 222 MA's), (10, 6487), (13, 6526), (17, 6559), (21, 6592), (23, 6598), (24, 6601), (26, 6619), (32, 6652), (35, 6670), (37, 6676), (38, 6688), (39, 6706), (40, 6715), (44, 6739), (46, 6766), (47, 6769), (50, 6787),

Gene: Frankie_9 Start: 6489, Stop: 6818, Start Num: 7

Candidate Starts for Frankie_9:

(Start: 7 @6489 has 222 MA's), (10, 6513), (13, 6552), (17, 6585), (19, 6597), (21, 6618), (23, 6624), (24, 6627), (26, 6645), (32, 6678), (35, 6696), (37, 6702), (38, 6714), (39, 6732), (40, 6741), (44, 6765), (46, 6792), (47, 6795), (50, 6813),

Gene: FreddyB_8 Start: 6444, Stop: 6773, Start Num: 7

Candidate Starts for FreddyB_8:

(1, 6174), (2, 6351), (Start: 7 @6444 has 222 MA's), (10, 6468), (13, 6507), (17, 6540), (19, 6552), (21, 6573), (23, 6579), (24, 6582), (26, 6600), (32, 6633), (35, 6651), (37, 6657), (38, 6669), (39, 6687), (40, 6696), (44, 6720), (46, 6747), (47, 6750), (50, 6768),

Gene: Fruitloop_8 Start: 6447, Stop: 6779, Start Num: 7

Candidate Starts for Fruitloop_8:

(Start: 7 @6447 has 222 MA's), (10, 6471), (12, 6489), (15, 6528), (18, 6549), (20, 6564), (23, 6582), (25, 6600), (29, 6624), (34, 6642), (35, 6654), (37, 6660), (39, 6690), (44, 6723),

Gene: GUmbie_8 Start: 6460, Stop: 6789, Start Num: 7

Candidate Starts for GUmbie_8:

(1, 6190), (2, 6367), (Start: 7 @6460 has 222 MA's), (10, 6484), (13, 6523), (17, 6556), (19, 6568), (21, 6589), (23, 6595), (24, 6598), (26, 6616), (29, 6637), (32, 6649), (35, 6667), (37, 6673), (39, 6703), (40, 6712), (44, 6736), (46, 6763), (47, 6766), (50, 6784),

Gene: Galactic_8 Start: 6420, Stop: 6752, Start Num: 7

Candidate Starts for Galactic_8:

(Start: 7 @6420 has 222 MA's), (10, 6444), (12, 6462), (15, 6501), (18, 6522), (23, 6555), (25, 6573), (29, 6597), (32, 6609), (34, 6615), (35, 6627), (37, 6633), (39, 6663), (44, 6696),

Gene: Gandalph_8 Start: 6460, Stop: 6789, Start Num: 7

Candidate Starts for Gandalph_8:

(1, 6190), (2, 6367), (Start: 7 @6460 has 222 MA's), (10, 6484), (13, 6523), (17, 6556), (19, 6568), (21, 6589), (23, 6595), (24, 6598), (26, 6616), (32, 6649), (35, 6667), (37, 6673), (38, 6685), (39, 6703),

(40, 6712), (44, 6736), (46, 6763), (47, 6766), (50, 6784),

Gene: Geralt_8 Start: 6443, Stop: 6772, Start Num: 7

Candidate Starts for Geralt_8:

(1, 6173), (2, 6350), (Start: 7 @6443 has 222 MA's), (10, 6467), (13, 6506), (17, 6539), (19, 6551), (21, 6572), (23, 6578), (24, 6581), (26, 6599), (32, 6632), (35, 6650), (37, 6656), (38, 6668), (39, 6686), (40, 6695), (44, 6719), (46, 6746), (47, 6749), (50, 6767),

Gene: GigiOuiOui_8 Start: 6460, Stop: 6789, Start Num: 7

Candidate Starts for GigiOuiOui_8:

(1, 6190), (2, 6367), (Start: 7 @6460 has 222 MA's), (10, 6484), (13, 6523), (17, 6556), (21, 6589), (23, 6595), (24, 6598), (26, 6616), (32, 6649), (35, 6667), (37, 6673), (38, 6685), (39, 6703), (40, 6712), (44, 6736), (46, 6763), (47, 6766), (50, 6784),

Gene: Girafales_9 Start: 6291, Stop: 6620, Start Num: 7

Candidate Starts for Girafales_9:

(Start: 7 @6291 has 222 MA's), (10, 6315), (13, 6354), (17, 6387), (19, 6399), (21, 6420), (23, 6426), (24, 6429), (26, 6447), (32, 6480), (35, 6498), (37, 6504), (38, 6516), (39, 6534), (40, 6543), (44, 6567), (46, 6594), (47, 6597), (50, 6615),

Gene: Girr_8 Start: 6449, Stop: 6778, Start Num: 7

Candidate Starts for Girr_8:

(Start: 7 @6449 has 222 MA's), (10, 6473), (13, 6512), (17, 6545), (19, 6557), (21, 6578), (23, 6584), (24, 6587), (26, 6605), (32, 6638), (35, 6656), (37, 6662), (39, 6692), (40, 6701), (44, 6725), (46, 6752), (47, 6755), (50, 6773),

Gene: Gorge_8 Start: 6432, Stop: 6761, Start Num: 7

Candidate Starts for Gorge_8:

(1, 6162), (2, 6339), (Start: 7 @6432 has 222 MA's), (10, 6456), (13, 6495), (17, 6528), (19, 6540), (21, 6561), (23, 6567), (24, 6570), (26, 6588), (32, 6621), (35, 6639), (37, 6645), (38, 6657), (39, 6675), (40, 6684), (44, 6708), (46, 6735), (47, 6738), (50, 6756),

Gene: Guppsters_8 Start: 6446, Stop: 6778, Start Num: 7

Candidate Starts for Guppsters_8:

(Start: 7 @6446 has 222 MA's), (10, 6470), (12, 6488), (15, 6527), (18, 6548), (20, 6563), (23, 6581), (25, 6599), (29, 6623), (32, 6635), (34, 6641), (35, 6653), (37, 6659), (39, 6689), (44, 6722),

Gene: Hades_8 Start: 6446, Stop: 6775, Start Num: 7

Candidate Starts for Hades_8:

(1, 6176), (2, 6353), (Start: 7 @6446 has 222 MA's), (10, 6470), (13, 6509), (17, 6542), (21, 6575), (23, 6581), (24, 6584), (26, 6602), (32, 6635), (35, 6653), (37, 6659), (39, 6689), (40, 6698), (44, 6722), (46, 6749), (47, 6752), (50, 6770),

Gene: Hamulus_8 Start: 6447, Stop: 6779, Start Num: 7

Candidate Starts for Hamulus_8:

(Start: 7 @6447 has 222 MA's), (10, 6471), (12, 6489), (15, 6528), (18, 6549), (20, 6564), (23, 6582), (25, 6600), (29, 6624), (32, 6636), (34, 6642), (35, 6654), (37, 6660), (39, 6690), (44, 6723),

Gene: Harley_8 Start: 6433, Stop: 6762, Start Num: 7

Candidate Starts for Harley_8:

(2, 6340), (Start: 7 @6433 has 222 MA's), (10, 6457), (13, 6496), (17, 6529), (19, 6541), (21, 6562), (23, 6568), (24, 6571), (26, 6589), (32, 6622), (35, 6640), (37, 6646), (38, 6658), (39, 6676), (40, 6685), (44, 6709), (46, 6736), (47, 6739), (50, 6757),

Gene: Hegedechwinu_9 Start: 6295, Stop: 6624, Start Num: 7

Candidate Starts for Hegedechwinu_9:

(Start: 7 @6295 has 222 MA's), (10, 6319), (13, 6358), (17, 6391), (19, 6403), (21, 6424), (23, 6430), (24, 6433), (26, 6451), (32, 6484), (35, 6502), (37, 6508), (38, 6520), (39, 6538), (40, 6547), (44, 6571), (46, 6598), (47, 6601), (50, 6619),

Gene: Hlubikazi_8 Start: 6433, Stop: 6762, Start Num: 7

Candidate Starts for Hlubikazi_8:

(1, 6163), (2, 6340), (Start: 7 @6433 has 222 MA's), (10, 6457), (13, 6496), (17, 6529), (19, 6541), (21, 6562), (23, 6568), (24, 6571), (26, 6589), (32, 6622), (35, 6640), (37, 6646), (39, 6676), (40, 6685), (44, 6709), (46, 6736), (47, 6739), (50, 6757),

Gene: lMpilo_8 Start: 6434, Stop: 6766, Start Num: 7

Candidate Starts for lMpilo_8:

(Start: 7 @6434 has 222 MA's), (10, 6458), (12, 6476), (15, 6515), (18, 6536), (20, 6551), (23, 6569), (25, 6587), (29, 6611), (32, 6623), (34, 6629), (35, 6641), (37, 6647), (39, 6677), (44, 6710),

Gene: lbOuu_8 Start: 6442, Stop: 6771, Start Num: 7

Candidate Starts for lbOuu_8:

(1, 6172), (2, 6349), (Start: 7 @6442 has 222 MA's), (10, 6466), (13, 6505), (17, 6538), (19, 6550), (21, 6571), (23, 6577), (24, 6580), (26, 6598), (32, 6631), (35, 6649), (37, 6655), (38, 6667), (39, 6685), (40, 6694), (44, 6718), (46, 6745), (47, 6748), (50, 6766),

Gene: lbhubesi_8 Start: 6433, Stop: 6762, Start Num: 7

Candidate Starts for lbhubesi_8:

(2, 6340), (Start: 7 @6433 has 222 MA's), (10, 6457), (13, 6496), (17, 6529), (19, 6541), (21, 6562), (23, 6568), (24, 6571), (26, 6589), (32, 6622), (35, 6640), (37, 6646), (38, 6658), (39, 6676), (40, 6685), (44, 6709), (46, 6736), (47, 6739), (50, 6757),

Gene: Inventum_8 Start: 6443, Stop: 6772, Start Num: 7

Candidate Starts for Inventum_8:

(1, 6173), (2, 6350), (Start: 7 @6443 has 222 MA's), (10, 6467), (13, 6506), (17, 6539), (19, 6551), (21, 6572), (23, 6578), (24, 6581), (26, 6599), (32, 6632), (35, 6650), (37, 6656), (38, 6668), (39, 6686), (40, 6695), (44, 6719), (46, 6746), (47, 6749), (50, 6767),

Gene: IrishSherpFalk_8 Start: 6434, Stop: 6766, Start Num: 7

Candidate Starts for IrishSherpFalk_8:

(Start: 7 @6434 has 222 MA's), (9, 6455), (10, 6458), (13, 6497), (18, 6536), (23, 6569), (24, 6572), (28, 6605), (29, 6611), (35, 6641), (37, 6647), (39, 6677), (44, 6710), (46, 6737), (49, 6749), (50, 6758),

Gene: JalFarm20_9 Start: 6296, Stop: 6625, Start Num: 7

Candidate Starts for JalFarm20_9:

(Start: 7 @6296 has 222 MA's), (10, 6320), (13, 6359), (17, 6392), (19, 6404), (21, 6425), (23, 6431), (24, 6434), (26, 6452), (29, 6473), (32, 6485), (35, 6503), (37, 6509), (39, 6539), (40, 6548), (44, 6572), (46, 6599), (47, 6602), (50, 6620),

Gene: James_8 Start: 6435, Stop: 6764, Start Num: 7

Candidate Starts for James_8:

(1, 6165), (2, 6342), (Start: 7 @6435 has 222 MA's), (10, 6459), (13, 6498), (17, 6531), (19, 6543), (21, 6564), (23, 6570), (24, 6573), (26, 6591), (32, 6624), (35, 6642), (37, 6648), (39, 6678), (40, 6687), (44, 6711), (46, 6738), (47, 6741), (50, 6759),

Gene: Jarcob_8 Start: 6444, Stop: 6773, Start Num: 7

Candidate Starts for Jarcob_8:

(1, 6174), (2, 6351), (Start: 7 @6444 has 222 MA's), (10, 6468), (13, 6507), (17, 6540), (19, 6552), (21, 6573), (23, 6579), (24, 6582), (26, 6600), (32, 6633), (35, 6651), (37, 6657), (38, 6669), (39, 6687), (40, 6696), (44, 6720), (45, 6738), (46, 6747), (47, 6750), (50, 6768),

Gene: Jinglebell_8 Start: 6442, Stop: 6771, Start Num: 7

Candidate Starts for Jinglebell_8:

(1, 6172), (2, 6349), (Start: 7 @6442 has 222 MA's), (10, 6466), (13, 6505), (17, 6538), (19, 6550), (21, 6571), (23, 6577), (24, 6580), (26, 6598), (32, 6631), (35, 6649), (37, 6655), (39, 6685), (40, 6694), (44, 6718), (46, 6745), (47, 6748), (50, 6766),

Gene: Job42_9 Start: 6296, Stop: 6625, Start Num: 7

Candidate Starts for Job42_9:

(Start: 7 @6296 has 222 MA's), (10, 6320), (13, 6359), (17, 6392), (21, 6425), (23, 6431), (24, 6434), (26, 6452), (32, 6485), (35, 6503), (37, 6509), (38, 6521), (39, 6539), (40, 6548), (42, 6554), (44, 6572), (46, 6599), (47, 6602), (50, 6620),

Gene: JoeyJr_8 Start: 6443, Stop: 6772, Start Num: 7

Candidate Starts for JoeyJr_8:

(1, 6173), (2, 6350), (Start: 7 @6443 has 222 MA's), (10, 6467), (13, 6506), (17, 6539), (19, 6551), (21, 6572), (23, 6578), (24, 6581), (26, 6599), (32, 6632), (35, 6650), (37, 6656), (38, 6668), (39, 6686), (40, 6695), (44, 6719), (46, 6746), (47, 6749), (50, 6767),

Gene: Juice456_9 Start: 6297, Stop: 6626, Start Num: 7

Candidate Starts for Juice456_9:

(Start: 7 @6297 has 222 MA's), (10, 6321), (13, 6360), (17, 6393), (19, 6405), (21, 6426), (23, 6432), (24, 6435), (26, 6453), (32, 6486), (35, 6504), (37, 6510), (38, 6522), (39, 6540), (40, 6549), (44, 6573), (46, 6600), (47, 6603), (50, 6621),

Gene: Juicebox_11 Start: 8253, Stop: 8600, Start Num: 6

Candidate Starts for Juicebox_11:

(Start: 6 @8253 has 1 MA's), (18, 8364), (36, 8472),

Gene: Juniper1_8 Start: 6435, Stop: 6764, Start Num: 7

Candidate Starts for Juniper1_8:

(Start: 7 @6435 has 222 MA's), (10, 6459), (13, 6498), (17, 6531), (19, 6543), (21, 6564), (23, 6570), (24, 6573), (26, 6591), (29, 6612), (32, 6624), (35, 6642), (37, 6648), (39, 6678), (40, 6687), (44, 6711), (46, 6738), (47, 6741), (50, 6759),

Gene: Karhdo_8 Start: 6447, Stop: 6776, Start Num: 7

Candidate Starts for Karhdo_8:

(1, 6177), (2, 6354), (Start: 7 @6447 has 222 MA's), (10, 6471), (13, 6510), (17, 6543), (19, 6555), (21, 6576), (23, 6582), (24, 6585), (26, 6603), (29, 6624), (32, 6636), (35, 6654), (37, 6660), (39, 6690), (40, 6699), (44, 6723), (46, 6750), (47, 6753), (50, 6771),

Gene: Kenuha5_8 Start: 6446, Stop: 6778, Start Num: 7

Candidate Starts for Kenuha5_8:

(Start: 7 @6446 has 222 MA's), (10, 6470), (12, 6488), (15, 6527), (18, 6548), (20, 6563), (23, 6581), (25, 6599), (29, 6623), (32, 6635), (34, 6641), (35, 6653), (37, 6659), (39, 6689), (44, 6722),

Gene: Kersh_8 Start: 6436, Stop: 6765, Start Num: 7

Candidate Starts for Kersh_8:

(1, 6166), (2, 6343), (Start: 7 @6436 has 222 MA's), (10, 6460), (13, 6499), (17, 6532), (19, 6544), (21, 6565), (23, 6571), (24, 6574), (26, 6592), (29, 6613), (32, 6625), (35, 6643), (37, 6649), (38, 6661), (39, 6679), (40, 6688), (44, 6712), (46, 6739), (47, 6742), (50, 6760),

Gene: Kimberlium_9 Start: 6297, Stop: 6626, Start Num: 7

Candidate Starts for Kimberlium_9:

(Start: 7 @6297 has 222 MA's), (10, 6321), (13, 6360), (17, 6393), (19, 6405), (21, 6426), (23, 6432), (24, 6435), (26, 6453), (32, 6486), (35, 6504), (37, 6510), (38, 6522), (39, 6540), (40, 6549), (44, 6573), (46, 6600), (47, 6603), (50, 6621),

Gene: KingMidas_8 Start: 6443, Stop: 6772, Start Num: 7

Candidate Starts for KingMidas_8:

(1, 6173), (2, 6350), (Start: 7 @6443 has 222 MA's), (10, 6467), (13, 6506), (17, 6539), (19, 6551), (21, 6572), (23, 6578), (24, 6581), (26, 6599), (32, 6632), (35, 6650), (37, 6656), (38, 6668), (39, 6686), (40, 6695), (44, 6719), (46, 6746), (47, 6749), (50, 6767),

Gene: Kingsley_9 Start: 6295, Stop: 6624, Start Num: 7

Candidate Starts for Kingsley_9:

(Start: 7 @6295 has 222 MA's), (10, 6319), (17, 6391), (19, 6403), (21, 6424), (23, 6430), (24, 6433), (26, 6451), (32, 6484), (35, 6502), (37, 6508), (38, 6520), (39, 6538), (40, 6547), (44, 6571), (46, 6598), (47, 6601), (50, 6619),

Gene: Koella_8 Start: 6443, Stop: 6772, Start Num: 7

Candidate Starts for Koella_8:

(1, 6173), (2, 6350), (Start: 7 @6443 has 222 MA's), (10, 6467), (13, 6506), (17, 6539), (19, 6551), (21, 6572), (23, 6578), (24, 6581), (26, 6599), (32, 6632), (35, 6650), (37, 6656), (38, 6668), (39, 6686), (40, 6695), (44, 6719), (46, 6746), (47, 6749), (50, 6767),

Gene: Krakatau_9 Start: 7098, Stop: 7430, Start Num: 7

Candidate Starts for Krakatau_9:

(Start: 7 @7098 has 222 MA's), (10, 7122), (12, 7140), (15, 7179), (18, 7200), (20, 7215), (23, 7233), (25, 7251), (29, 7275), (34, 7293), (35, 7305), (37, 7311), (39, 7341), (44, 7374),

Gene: KristaRAM_9 Start: 7094, Stop: 7426, Start Num: 7

Candidate Starts for KristaRAM_9:

(Start: 7 @7094 has 222 MA's), (10, 7118), (12, 7136), (15, 7175), (18, 7196), (20, 7211), (23, 7229), (25, 7247), (29, 7271), (32, 7283), (34, 7289), (35, 7301), (37, 7307), (39, 7337), (44, 7370),

Gene: LastJedi_8 Start: 6435, Stop: 6764, Start Num: 7

Candidate Starts for LastJedi_8:

(1, 6165), (2, 6342), (Start: 7 @6435 has 222 MA's), (10, 6459), (13, 6498), (17, 6531), (19, 6543), (21, 6564), (23, 6570), (24, 6573), (26, 6591), (32, 6624), (35, 6642), (37, 6648), (39, 6678), (40, 6687), (44, 6711), (46, 6738), (47, 6741), (50, 6759),

Gene: Latretium_8 Start: 6432, Stop: 6761, Start Num: 7

Candidate Starts for Latretium_8:

(Start: 7 @6432 has 222 MA's), (10, 6456), (13, 6495), (17, 6528), (19, 6540), (21, 6561), (23, 6567), (24, 6570), (26, 6588), (32, 6621), (35, 6639), (37, 6645), (39, 6675), (40, 6684), (44, 6708), (46, 6735), (47, 6738), (50, 6756),

Gene: Leozinho_9 Start: 6296, Stop: 6625, Start Num: 7

Candidate Starts for Leozinho_9:

(Start: 7 @6296 has 222 MA's), (10, 6320), (13, 6359), (17, 6392), (19, 6404), (21, 6425), (23, 6431), (24, 6434), (26, 6452), (32, 6485), (35, 6503), (37, 6509), (38, 6521), (39, 6539), (40, 6548), (44, 6572), (46, 6599), (47, 6602), (50, 6620),

Gene: Leperchaun_8 Start: 6432, Stop: 6761, Start Num: 7

Candidate Starts for Leperchaun_8:

(1, 6162), (2, 6339), (Start: 7 @6432 has 222 MA's), (10, 6456), (13, 6495), (17, 6528), (19, 6540), (21, 6561), (23, 6567), (24, 6570), (26, 6588), (32, 6621), (35, 6639), (37, 6645), (38, 6657), (39, 6675), (40, 6684), (44, 6708), (46, 6735), (47, 6738), (50, 6756),

Gene: LilMoolah_8 Start: 6444, Stop: 6773, Start Num: 7

Candidate Starts for LilMoolah_8:

(1, 6174), (2, 6351), (Start: 7 @6444 has 222 MA's), (10, 6468), (13, 6507), (17, 6540), (19, 6552), (21, 6573), (23, 6579), (24, 6582), (26, 6600), (32, 6633), (35, 6651), (37, 6657), (38, 6669), (39, 6687), (40, 6696), (44, 6720), (46, 6747), (47, 6750), (50, 6768),

Gene: LilSpotty_9 Start: 6468, Stop: 6830, Start Num: 7

Candidate Starts for LilSpotty_9:

(Start: 7 @6468 has 222 MA's), (11, 6504), (14, 6543), (18, 6570), (19, 6576), (21, 6597), (22, 6600), (27, 6648), (30, 6669), (31, 6672), (32, 6678), (35, 6702), (41, 6750), (48, 6804), (50, 6819),

Gene: LittleShirley_9 Start: 6297, Stop: 6626, Start Num: 7

Candidate Starts for LittleShirley_9:

(Start: 7 @6297 has 222 MA's), (10, 6321), (13, 6360), (17, 6393), (19, 6405), (21, 6426), (23, 6432), (24, 6435), (26, 6453), (32, 6486), (35, 6504), (37, 6510), (38, 6522), (39, 6540), (40, 6549), (44, 6573), (46, 6600), (47, 6603), (50, 6621),

Gene: Lizziana_8 Start: 6445, Stop: 6774, Start Num: 7

Candidate Starts for Lizziana_8:

(1, 6175), (2, 6352), (Start: 7 @6445 has 222 MA's), (10, 6469), (13, 6508), (17, 6541), (19, 6553), (21, 6574), (23, 6580), (24, 6583), (26, 6601), (32, 6634), (35, 6652), (37, 6658), (38, 6670), (39, 6688), (40, 6697), (44, 6721), (45, 6739), (46, 6748), (47, 6751), (50, 6769),

Gene: Llama_8 Start: 6442, Stop: 6771, Start Num: 7

Candidate Starts for Llama_8:

(1, 6172), (2, 6349), (Start: 7 @6442 has 222 MA's), (10, 6466), (13, 6505), (17, 6538), (19, 6550), (21, 6571), (23, 6577), (24, 6580), (26, 6598), (32, 6631), (35, 6649), (37, 6655), (39, 6685), (40, 6694), (44, 6718), (46, 6745), (47, 6748), (50, 6766),

Gene: Llij_8 Start: 6460, Stop: 6789, Start Num: 7

Candidate Starts for Llij_8:

(1, 6190), (2, 6367), (Start: 7 @6460 has 222 MA's), (10, 6484), (13, 6523), (17, 6556), (19, 6568), (21, 6589), (23, 6595), (24, 6598), (26, 6616), (32, 6649), (35, 6667), (37, 6673), (38, 6685), (39, 6703), (40, 6712), (44, 6736), (46, 6763), (47, 6766), (50, 6784),

Gene: Lorde_9 Start: 6296, Stop: 6625, Start Num: 7

Candidate Starts for Lorde_9:

(Start: 7 @6296 has 222 MA's), (10, 6320), (13, 6359), (17, 6392), (19, 6404), (21, 6425), (23, 6431), (24, 6434), (26, 6452), (32, 6485), (35, 6503), (37, 6509), (39, 6539), (40, 6548), (44, 6572), (46, 6599), (47, 6602), (50, 6620),

Gene: LunaBlu_8 Start: 6420, Stop: 6752, Start Num: 7

Candidate Starts for LunaBlu_8:

(Start: 7 @6420 has 222 MA's), (10, 6444), (12, 6462), (15, 6501), (18, 6522), (23, 6555), (25, 6573), (29, 6597), (32, 6609), (34, 6615), (35, 6627), (37, 6633), (39, 6663), (44, 6696),

Gene: LunaStella_9 Start: 6903, Stop: 7235, Start Num: 7

Candidate Starts for LunaStella_9:

(Start: 7 @6903 has 222 MA's), (10, 6927), (15, 6987), (18, 7008), (19, 7014), (27, 7074), (29, 7083), (31, 7089), (33, 7095), (40, 7155), (41, 7158), (49, 7218), (50, 7227),

Gene: MadMen_8 Start: 6459, Stop: 6788, Start Num: 7

Candidate Starts for MadMen_8:

(1, 6189), (2, 6366), (Start: 7 @6459 has 222 MA's), (10, 6483), (13, 6522), (17, 6555), (19, 6567), (21, 6588), (23, 6594), (24, 6597), (26, 6615), (32, 6648), (35, 6666), (37, 6672), (38, 6684), (39, 6702), (40, 6711), (44, 6735), (46, 6762), (47, 6765), (50, 6783),

Gene: Madiba_9 Start: 6294, Stop: 6623, Start Num: 7

Candidate Starts for Madiba_9:

(Start: 7 @6294 has 222 MA's), (10, 6318), (13, 6357), (17, 6390), (19, 6402), (21, 6423), (23, 6429), (24, 6432), (26, 6450), (32, 6483), (35, 6501), (37, 6507), (38, 6519), (39, 6537), (40, 6546), (44, 6570), (46, 6597), (47, 6600), (50, 6618),

Gene: Mahavrat_8 Start: 6432, Stop: 6761, Start Num: 7

Candidate Starts for Mahavrat_8:

(1, 6162), (2, 6339), (Start: 7 @6432 has 222 MA's), (10, 6456), (13, 6495), (17, 6528), (19, 6540), (21, 6561), (23, 6567), (24, 6570), (26, 6588), (32, 6621), (35, 6639), (37, 6645), (38, 6657), (39, 6675), (40, 6684), (44, 6708), (46, 6735), (47, 6738), (50, 6756),

Gene: Mandlovu_8 Start: 6433, Stop: 6762, Start Num: 7

Candidate Starts for Mandlovu_8:

(1, 6163), (2, 6340), (Start: 7 @6433 has 222 MA's), (10, 6457), (13, 6496), (17, 6529), (19, 6541), (21, 6562), (23, 6568), (24, 6571), (26, 6589), (32, 6622), (35, 6640), (37, 6646), (39, 6676), (40, 6685), (44, 6709), (46, 6736), (47, 6739), (50, 6757),

Gene: Mantra_8 Start: 6460, Stop: 6789, Start Num: 7

Candidate Starts for Mantra_8:

(1, 6190), (2, 6367), (Start: 7 @6460 has 222 MA's), (10, 6484), (13, 6523), (17, 6556), (21, 6589), (23, 6595), (24, 6598), (26, 6616), (32, 6649), (35, 6667), (37, 6673), (38, 6685), (39, 6703), (40, 6712), (44, 6736), (46, 6763), (47, 6766), (50, 6784),

Gene: Maravista_8 Start: 6433, Stop: 6762, Start Num: 7

Candidate Starts for Maravista_8:

(1, 6163), (2, 6340), (Start: 7 @6433 has 222 MA's), (10, 6457), (13, 6496), (17, 6529), (19, 6541), (21, 6562), (23, 6568), (24, 6571), (26, 6589), (32, 6622), (35, 6640), (37, 6646), (38, 6658), (39, 6676), (40, 6685), (44, 6709), (45, 6727), (46, 6736), (47, 6739), (50, 6757),

Gene: Marker_9 Start: 6295, Stop: 6624, Start Num: 7

Candidate Starts for Marker_9:

(Start: 7 @6295 has 222 MA's), (10, 6319), (13, 6358), (17, 6391), (21, 6424), (23, 6430), (24, 6433), (26, 6451), (32, 6484), (35, 6502), (37, 6508), (38, 6520), (39, 6538), (40, 6547), (44, 6571), (46, 6598), (47, 6601), (50, 6619),

Gene: Martik_8 Start: 6445, Stop: 6774, Start Num: 7

Candidate Starts for Martik_8:

(1, 6175), (2, 6352), (Start: 7 @6445 has 222 MA's), (10, 6469), (13, 6508), (17, 6541), (19, 6553), (21, 6574), (23, 6580), (24, 6583), (26, 6601), (32, 6634), (35, 6652), (37, 6658), (38, 6670), (39, 6688), (40, 6697), (44, 6721), (45, 6739), (46, 6748), (47, 6751), (50, 6769),

Gene: Mattes_8 Start: 6435, Stop: 6764, Start Num: 7

Candidate Starts for Mattes_8:

(1, 6165), (2, 6342), (Start: 7 @6435 has 222 MA's), (10, 6459), (13, 6498), (17, 6531), (19, 6543), (21, 6564), (23, 6570), (24, 6573), (26, 6591), (32, 6624), (35, 6642), (37, 6648), (39, 6678), (40, 6687), (44, 6711), (46, 6738), (47, 6741), (50, 6759),

Gene: Melissauren88_8 Start: 6446, Stop: 6778, Start Num: 7

Candidate Starts for Melissauren88_8:

(Start: 7 @6446 has 222 MA's), (10, 6470), (12, 6488), (15, 6527), (18, 6548), (20, 6563), (23, 6581), (25, 6599), (29, 6623), (34, 6641), (35, 6653), (37, 6659), (39, 6689), (44, 6722),

Gene: MilanaBonita_9 Start: 7094, Stop: 7426, Start Num: 7

Candidate Starts for MilanaBonita_9:

(Start: 7 @7094 has 222 MA's), (10, 7118), (12, 7136), (15, 7175), (18, 7196), (20, 7211), (23, 7229), (25, 7247), (29, 7271), (32, 7283), (34, 7289), (35, 7301), (37, 7307), (39, 7337), (44, 7370),

Gene: MilleniumForce_9 Start: 7094, Stop: 7426, Start Num: 7

Candidate Starts for MilleniumForce_9:

(Start: 7 @7094 has 222 MA's), (10, 7118), (12, 7136), (15, 7175), (18, 7196), (20, 7211), (23, 7229), (25, 7247), (29, 7271), (32, 7283), (34, 7289), (35, 7301), (37, 7307), (39, 7337), (44, 7370),

Gene: MinionDave_9 Start: 7094, Stop: 7426, Start Num: 7

Candidate Starts for MinionDave_9:

(Start: 7 @7094 has 222 MA's), (10, 7118), (12, 7136), (15, 7175), (18, 7196), (20, 7211), (23, 7229), (25, 7247), (29, 7271), (34, 7289), (35, 7301), (37, 7307), (39, 7337), (44, 7370),

Gene: Minnie_8 Start: 6460, Stop: 6789, Start Num: 7

Candidate Starts for Minnie_8:

(1, 6190), (2, 6367), (Start: 7 @6460 has 222 MA's), (10, 6484), (13, 6523), (17, 6556), (19, 6568), (21, 6589), (23, 6595), (24, 6598), (26, 6616), (32, 6649), (35, 6667), (37, 6673), (38, 6685), (39, 6703), (40, 6712), (44, 6736), (46, 6763), (47, 6766), (50, 6784),

Gene: Misha28_9 Start: 6299, Stop: 6628, Start Num: 7

Candidate Starts for Misha28_9:

(Start: 7 @6299 has 222 MA's), (10, 6323), (13, 6362), (17, 6395), (19, 6407), (21, 6428), (23, 6434), (24, 6437), (26, 6455), (29, 6476), (32, 6488), (35, 6506), (37, 6512), (38, 6524), (39, 6542), (40, 6551), (44, 6575), (46, 6602), (47, 6605), (50, 6623),

Gene: MisterCuddles_8 Start: 6449, Stop: 6778, Start Num: 7

Candidate Starts for MisterCuddles_8:

(Start: 7 @6449 has 222 MA's), (10, 6473), (13, 6512), (17, 6545), (19, 6557), (21, 6578), (23, 6584), (24, 6587), (26, 6605), (32, 6638), (35, 6656), (37, 6662), (39, 6692), (40, 6701), (44, 6725), (46, 6752), (47, 6755), (50, 6773),

Gene: Modragons_8 Start: 6442, Stop: 6771, Start Num: 7

Candidate Starts for Modragons_8:

(1, 6172), (2, 6349), (Start: 7 @6442 has 222 MA's), (10, 6466), (13, 6505), (17, 6538), (19, 6550), (21, 6571), (23, 6577), (24, 6580), (26, 6598), (32, 6631), (35, 6649), (37, 6655), (39, 6685), (40, 6694), (44, 6718), (46, 6745), (47, 6748), (50, 6766),

Gene: Moonbeam_8 Start: 6445, Stop: 6774, Start Num: 7

Candidate Starts for Moonbeam_8:

(1, 6175), (2, 6352), (Start: 7 @6445 has 222 MA's), (10, 6469), (13, 6508), (17, 6541), (21, 6574), (23, 6580), (24, 6583), (26, 6601), (32, 6634), (35, 6652), (37, 6658), (38, 6670), (39, 6688), (40, 6697), (44, 6721), (46, 6748), (47, 6751), (50, 6769),

Gene: Mova_9 Start: 6298, Stop: 6627, Start Num: 7

Candidate Starts for Mova_9:

(Start: 7 @6298 has 222 MA's), (10, 6322), (13, 6361), (17, 6394), (19, 6406), (21, 6427), (23, 6433), (24, 6436), (26, 6454), (29, 6475), (32, 6487), (35, 6505), (37, 6511), (38, 6523), (39, 6541), (40, 6550), (44, 6574), (46, 6601), (47, 6604), (50, 6622),

Gene: Mozy_9 Start: 6294, Stop: 6626, Start Num: 7

Candidate Starts for Mozy_9:

(Start: 7 @6294 has 222 MA's), (10, 6318), (12, 6336), (18, 6396), (20, 6411), (25, 6447), (29, 6471), (32, 6483), (34, 6489), (35, 6501), (37, 6507), (39, 6537), (44, 6570),

Gene: Ms6_8 Start: 6446, Stop: 6778, Start Num: 7

Candidate Starts for Ms6_8:

(Start: 7 @6446 has 222 MA's), (10, 6470), (12, 6488), (15, 6527), (18, 6548), (20, 6563), (23, 6581), (25, 6599), (29, 6623), (32, 6635), (34, 6641), (35, 6653), (37, 6659), (39, 6689), (44, 6722),

Gene: MulchExplorer_10 Start: 6297, Stop: 6626, Start Num: 7

Candidate Starts for MulchExplorer_10:

(Start: 7 @6297 has 222 MA's), (10, 6321), (13, 6360), (17, 6393), (19, 6405), (21, 6426), (23, 6432), (24, 6435), (26, 6453), (32, 6486), (35, 6504), (37, 6510), (38, 6522), (39, 6540), (40, 6549), (44, 6573), (46, 6600), (47, 6603), (50, 6621),

Gene: MulchSalad_8 Start: 6446, Stop: 6775, Start Num: 7

Candidate Starts for MulchSalad_8:

(1, 6176), (2, 6353), (Start: 7 @6446 has 222 MA's), (10, 6470), (13, 6509), (17, 6542), (19, 6554), (21, 6575), (23, 6581), (24, 6584), (26, 6602), (32, 6635), (35, 6653), (37, 6659), (39, 6689), (40, 6698), (44, 6722), (46, 6749), (47, 6752), (50, 6770),

Gene: Mutaforma13_8 Start: 6446, Stop: 6778, Start Num: 7

Candidate Starts for Mutaforma13_8:

(Start: 7 @6446 has 222 MA's), (9, 6467), (10, 6470), (13, 6509), (18, 6548), (23, 6581), (24, 6584), (28, 6617), (29, 6623), (35, 6653), (37, 6659), (39, 6689), (44, 6722), (46, 6749), (49, 6761), (50, 6770),

Gene: Nimbo_8 Start: 6443, Stop: 6772, Start Num: 7

Candidate Starts for Nimbo_8:

(1, 6173), (2, 6350), (Start: 7 @6443 has 222 MA's), (10, 6467), (13, 6506), (17, 6539), (19, 6551), (21, 6572), (23, 6578), (24, 6581), (26, 6599), (32, 6632), (35, 6650), (37, 6656), (38, 6668), (39, 6686), (40, 6695), (44, 6719), (46, 6746), (47, 6749), (50, 6767),

Gene: Nitzel_9 Start: 7096, Stop: 7425, Start Num: 7

Candidate Starts for Nitzel_9:

(1, 6826), (2, 7003), (Start: 7 @7096 has 222 MA's), (10, 7120), (13, 7159), (17, 7192), (21, 7225), (23, 7231), (24, 7234), (26, 7252), (32, 7285), (35, 7303), (37, 7309), (38, 7321), (39, 7339), (40, 7348), (44, 7372), (46, 7399), (47, 7402), (50, 7420),

Gene: Nivrat_8 Start: 6444, Stop: 6773, Start Num: 7

Candidate Starts for Nivrat_8:

(1, 6174), (2, 6351), (Start: 7 @6444 has 222 MA's), (10, 6468), (13, 6507), (17, 6540), (19, 6552), (21, 6573), (23, 6579), (24, 6582), (26, 6600), (32, 6633), (35, 6651), (37, 6657), (38, 6669), (39, 6687), (40, 6696), (44, 6720), (45, 6738), (46, 6747), (47, 6750), (50, 6768),

Gene: NormanBulbieJr_8 Start: 6431, Stop: 6760, Start Num: 7

Candidate Starts for NormanBulbieJr_8:

(1, 6161), (2, 6338), (Start: 7 @6431 has 222 MA's), (10, 6455), (13, 6494), (17, 6527), (19, 6539), (21, 6560), (23, 6566), (24, 6569), (26, 6587), (32, 6620), (35, 6638), (37, 6644), (38, 6656), (39, 6674), (40, 6683), (44, 6707), (46, 6734), (47, 6737), (50, 6755),

Gene: Ochi17_8 Start: 6442, Stop: 6771, Start Num: 7

Candidate Starts for Ochi17_8:

(1, 6172), (2, 6349), (Start: 7 @6442 has 222 MA's), (10, 6466), (13, 6505), (17, 6538), (19, 6550), (21, 6571), (23, 6577), (24, 6580), (26, 6598), (32, 6631), (35, 6649), (37, 6655), (39, 6685), (40, 6694), (44, 6718), (46, 6745), (47, 6748), (50, 6766),

Gene: OfUltron_8 Start: 6442, Stop: 6771, Start Num: 7

Candidate Starts for OfUltron_8:

(1, 6172), (2, 6349), (Start: 7 @6442 has 222 MA's), (10, 6466), (13, 6505), (17, 6538), (19, 6550), (21, 6571), (23, 6577), (24, 6580), (26, 6598), (32, 6631), (35, 6649), (37, 6655), (39, 6685), (40, 6694), (44, 6718), (46, 6745), (47, 6748), (50, 6766),

Gene: Ogotogo_11 Start: 6698, Stop: 7027, Start Num: 7

Candidate Starts for Ogotogo_11:

(3, 6647), (4, 6653), (Start: 7 @6698 has 222 MA's), (10, 6722), (13, 6761), (17, 6794), (21, 6827), (23, 6833), (24, 6836), (26, 6854), (32, 6887), (35, 6905), (37, 6911), (38, 6923), (39, 6941), (40, 6950), (44, 6974), (46, 7001), (47, 7004), (50, 7022),

Gene: Oksu_9 Start: 6297, Stop: 6626, Start Num: 7

Candidate Starts for Oksu_9:

(Start: 7 @6297 has 222 MA's), (10, 6321), (13, 6360), (17, 6393), (19, 6405), (21, 6426), (23, 6432), (24, 6435), (26, 6453), (32, 6486), (35, 6504), (37, 6510), (39, 6540), (40, 6549), (44, 6573), (46, 6600), (47, 6603), (50, 6621),

Gene: OldBen_8 Start: 6443, Stop: 6772, Start Num: 7

Candidate Starts for OldBen_8:

(1, 6173), (2, 6350), (Start: 7 @6443 has 222 MA's), (10, 6467), (13, 6506), (17, 6539), (19, 6551), (21, 6572), (23, 6578), (24, 6581), (26, 6599), (32, 6632), (35, 6650), (37, 6656), (38, 6668), (39, 6686), (40, 6695), (44, 6719), (46, 6746), (47, 6749), (50, 6767),

Gene: OlympiaSaint_8 Start: 6444, Stop: 6773, Start Num: 7

Candidate Starts for OlympiaSaint_8:

(1, 6174), (2, 6351), (Start: 7 @6444 has 222 MA's), (10, 6468), (13, 6507), (17, 6540), (21, 6573), (23, 6579), (24, 6582), (26, 6600), (32, 6633), (35, 6651), (37, 6657), (38, 6669), (39, 6687), (40, 6696), (44, 6720), (46, 6747), (47, 6750), (50, 6768),

Gene: Ovechkin_8 Start: 6446, Stop: 6778, Start Num: 7

Candidate Starts for Ovechkin_8:

(Start: 7 @6446 has 222 MA's), (10, 6470), (12, 6488), (15, 6527), (18, 6548), (20, 6563), (23, 6581), (25, 6599), (29, 6623), (34, 6641), (35, 6653), (37, 6659), (39, 6689), (44, 6722),

Gene: OwlsT2W_9 Start: 6296, Stop: 6625, Start Num: 7

Candidate Starts for OwlsT2W_9:

(Start: 7 @6296 has 222 MA's), (10, 6320), (13, 6359), (17, 6392), (19, 6404), (21, 6425), (23, 6431), (24, 6434), (26, 6452), (32, 6485), (35, 6503), (37, 6509), (38, 6521), (39, 6539), (40, 6548), (44, 6572), (46, 6599), (47, 6602), (50, 6620),

Gene: PHappiness_8 Start: 6443, Stop: 6772, Start Num: 7

Candidate Starts for PHappiness_8:

(1, 6173), (2, 6350), (Start: 7 @6443 has 222 MA's), (10, 6467), (13, 6506), (17, 6539), (19, 6551), (21, 6572), (23, 6578), (24, 6581), (26, 6599), (32, 6632), (35, 6650), (37, 6656), (38, 6668), (39, 6686), (40, 6695), (44, 6719), (46, 6746), (47, 6749), (50, 6767),

Gene: PMC_8 Start: 6460, Stop: 6789, Start Num: 7

Candidate Starts for PMC_8:

(1, 6190), (2, 6367), (Start: 7 @6460 has 222 MA's), (10, 6484), (13, 6523), (17, 6556), (19, 6568), (21, 6589), (23, 6595), (24, 6598), (26, 6616), (32, 6649), (35, 6667), (37, 6673), (38, 6685), (39, 6703), (40, 6712), (44, 6736), (46, 6763), (47, 6766), (50, 6784),

Gene: Pacc40_8 Start: 6443, Stop: 6772, Start Num: 7

Candidate Starts for Pacc40_8:

(1, 6173), (2, 6350), (Start: 7 @6443 has 222 MA's), (10, 6467), (13, 6506), (17, 6539), (19, 6551), (21, 6572), (23, 6578), (24, 6581), (26, 6599), (32, 6632), (35, 6650), (37, 6656), (38, 6668), (39, 6686), (40, 6695), (44, 6719), (46, 6746), (47, 6749), (50, 6767),

Gene: Phalconet_8 Start: 6446, Stop: 6778, Start Num: 7

Candidate Starts for Phalconet_8:

(Start: 7 @6446 has 222 MA's), (10, 6470), (12, 6488), (15, 6527), (18, 6548), (20, 6563), (23, 6581), (25, 6599), (29, 6623), (34, 6641), (35, 6653), (37, 6659), (39, 6689), (44, 6722),

Gene: Phanphagia_8 Start: 6446, Stop: 6778, Start Num: 7

Candidate Starts for Phanphagia_8:

(Start: 7 @6446 has 222 MA's), (10, 6470), (12, 6488), (15, 6527), (18, 6548), (23, 6581), (25, 6599), (29, 6623), (32, 6635), (34, 6641), (35, 6653), (37, 6659), (39, 6689), (43, 6707), (44, 6722),

Gene: Phasih_8 Start: 6459, Stop: 6788, Start Num: 7

Candidate Starts for Phasih_8:

(Start: 7 @6459 has 222 MA's), (10, 6483), (13, 6522), (17, 6555), (19, 6567), (21, 6588), (23, 6594), (24, 6597), (26, 6615), (32, 6648), (35, 6666), (37, 6672), (39, 6702), (40, 6711), (44, 6735), (46, 6762), (47, 6765), (50, 6783),

Gene: Phatniss_8 Start: 6443, Stop: 6772, Start Num: 7

Candidate Starts for Phatniss_8:

(1, 6173), (2, 6350), (Start: 7 @6443 has 222 MA's), (10, 6467), (13, 6506), (17, 6539), (19, 6551), (21, 6572), (23, 6578), (24, 6581), (26, 6599), (32, 6632), (35, 6650), (37, 6656), (38, 6668), (39, 6686), (40, 6695), (44, 6719), (46, 6746), (47, 6749), (50, 6767),

Gene: PhesterPhotato_8 Start: 6446, Stop: 6778, Start Num: 7

Candidate Starts for PhesterPhotato_8:

(Start: 7 @6446 has 222 MA's), (10, 6470), (12, 6488), (15, 6527), (18, 6548), (20, 6563), (23, 6581), (25, 6599), (29, 6623), (34, 6641), (35, 6653), (37, 6659), (39, 6689), (44, 6722),

Gene: Philus_8 Start: 6444, Stop: 6773, Start Num: 7

Candidate Starts for Philus_8:

(1, 6174), (2, 6351), (Start: 7 @6444 has 222 MA's), (10, 6468), (13, 6507), (17, 6540), (19, 6552), (21, 6573), (23, 6579), (24, 6582), (26, 6600), (32, 6633), (35, 6651), (37, 6657), (38, 6669), (39, 6687), (40, 6696), (44, 6720), (45, 6738), (46, 6747), (47, 6750), (50, 6768),

Gene: Piper2020_9 Start: 6298, Stop: 6627, Start Num: 7

Candidate Starts for Piper2020_9:

(Start: 7 @6298 has 222 MA's), (10, 6322), (13, 6361), (17, 6394), (21, 6427), (23, 6433), (24, 6436), (26, 6454), (32, 6487), (35, 6505), (37, 6511), (38, 6523), (39, 6541), (40, 6550), (44, 6574), (45, 6592), (46, 6601), (47, 6604), (50, 6622),

Gene: Pippy_8 Start: 6431, Stop: 6760, Start Num: 7

Candidate Starts for Pippy_8:

(1, 6161), (2, 6338), (Start: 7 @6431 has 222 MA's), (10, 6455), (13, 6494), (17, 6527), (19, 6539), (21, 6560), (23, 6566), (24, 6569), (26, 6587), (32, 6620), (35, 6638), (37, 6644), (38, 6656), (39, 6674), (40, 6683), (44, 6707), (46, 6734), (47, 6737), (50, 6755),

Gene: Plumbus_9 Start: 6297, Stop: 6626, Start Num: 7

Candidate Starts for Plumbus_9:

(Start: 7 @6297 has 222 MA's), (10, 6321), (13, 6360), (17, 6393), (19, 6405), (21, 6426), (23, 6432), (24, 6435), (26, 6453), (32, 6486), (35, 6504), (37, 6510), (38, 6522), (39, 6540), (40, 6549), (44, 6573), (46, 6600), (47, 6603), (50, 6621),

Gene: Poenanya_8 Start: 6443, Stop: 6772, Start Num: 7

Candidate Starts for Poenanya_8:

(1, 6173), (2, 6350), (Start: 7 @6443 has 222 MA's), (10, 6467), (13, 6506), (17, 6539), (19, 6551), (21, 6572), (23, 6578), (24, 6581), (26, 6599), (32, 6632), (35, 6650), (37, 6656), (38, 6668), (39, 6686), (40, 6695), (44, 6719), (46, 6746), (47, 6749), (50, 6767),

Gene: Polka14_8 Start: 6444, Stop: 6773, Start Num: 7

Candidate Starts for Polka14_8:

(1, 6174), (2, 6351), (Start: 7 @6444 has 222 MA's), (10, 6468), (13, 6507), (17, 6540), (19, 6552), (21, 6573), (23, 6579), (24, 6582), (26, 6600), (32, 6633), (35, 6651), (37, 6657), (38, 6669), (39, 6687), (40, 6696), (44, 6720), (46, 6747), (47, 6750), (50, 6768),

Gene: Pollywog_9 Start: 6296, Stop: 6625, Start Num: 7

Candidate Starts for Pollywog_9:

(Start: 7 @6296 has 222 MA's), (10, 6320), (13, 6359), (17, 6392), (19, 6404), (21, 6425), (23, 6431), (24, 6434), (26, 6452), (32, 6485), (35, 6503), (37, 6509), (38, 6521), (39, 6539), (40, 6548), (44, 6572), (46, 6599), (47, 6602), (50, 6620),

Gene: PopTart_8 Start: 6446, Stop: 6778, Start Num: 7

Candidate Starts for PopTart_8:

(Start: 7 @6446 has 222 MA's), (10, 6470), (12, 6488), (15, 6527), (18, 6548), (20, 6563), (23, 6581), (25, 6599), (29, 6623), (34, 6641), (35, 6653), (37, 6659), (39, 6689), (44, 6722),

Gene: Priscilla_8 Start: 6444, Stop: 6773, Start Num: 7

Candidate Starts for Priscilla_8:

(1, 6174), (2, 6351), (Start: 7 @6444 has 222 MA's), (10, 6468), (13, 6507), (17, 6540), (19, 6552), (21, 6573), (23, 6579), (24, 6582), (26, 6600), (32, 6633), (35, 6651), (37, 6657), (38, 6669), (39, 6687), (40, 6696), (44, 6720), (46, 6747), (47, 6750), (50, 6768),

Gene: QuickMath_8 Start: 6447, Stop: 6779, Start Num: 7

Candidate Starts for QuickMath_8:

(Start: 7 @6447 has 222 MA's), (10, 6471), (12, 6489), (15, 6528), (18, 6549), (20, 6564), (23, 6582), (25, 6600), (29, 6624), (32, 6636), (34, 6642), (35, 6654), (37, 6660), (39, 6690), (44, 6723),

Gene: Quico_9 Start: 6291, Stop: 6620, Start Num: 7

Candidate Starts for Quico_9:

(Start: 7 @6291 has 222 MA's), (10, 6315), (13, 6354), (17, 6387), (19, 6399), (21, 6420), (23, 6426), (24, 6429), (26, 6447), (32, 6480), (35, 6498), (37, 6504), (38, 6516), (39, 6534), (40, 6543), (44, 6567), (46, 6594), (47, 6597), (50, 6615),

Gene: Radiance_8 Start: 6443, Stop: 6772, Start Num: 7

Candidate Starts for Radiance_8:

(1, 6173), (2, 6350), (Start: 7 @6443 has 222 MA's), (10, 6467), (13, 6506), (17, 6539), (19, 6551), (21, 6572), (23, 6578), (24, 6581), (26, 6599), (32, 6632), (35, 6650), (37, 6656), (38, 6668), (39, 6686), (40, 6695), (44, 6719), (46, 6746), (47, 6749), (50, 6767),

Gene: Ramsey_9 Start: 6295, Stop: 6624, Start Num: 7

Candidate Starts for Ramsey_9:

(Start: 7 @6295 has 222 MA's), (10, 6319), (13, 6358), (17, 6391), (19, 6403), (21, 6424), (23, 6430), (24, 6433), (26, 6451), (32, 6484), (35, 6502), (37, 6508), (38, 6520), (39, 6538), (40, 6547), (44, 6571), (46, 6598), (47, 6601), (50, 6619),

Gene: RedBird_8 Start: 6443, Stop: 6772, Start Num: 7

Candidate Starts for RedBird_8:

(1, 6173), (2, 6350), (Start: 7 @6443 has 222 MA's), (10, 6467), (13, 6506), (17, 6539), (19, 6551), (21, 6572), (23, 6578), (24, 6581), (26, 6599), (32, 6632), (35, 6650), (37, 6656), (38, 6668), (39, 6686), (40, 6695), (44, 6719), (46, 6746), (47, 6749), (50, 6767),

Gene: Renaud18_9 Start: 6780, Stop: 7112, Start Num: 7

Candidate Starts for Renaud18_9:

(Start: 7 @6780 has 222 MA's), (10, 6804), (15, 6864), (18, 6885), (19, 6891), (27, 6951), (29, 6960), (31, 6966), (33, 6972), (40, 7032), (41, 7035), (49, 7095), (50, 7104),

Gene: Rialto_9 Start: 6297, Stop: 6626, Start Num: 7

Candidate Starts for Rialto_9:

(Start: 7 @6297 has 222 MA's), (10, 6321), (13, 6360), (17, 6393), (19, 6405), (21, 6426), (23, 6432), (24, 6435), (26, 6453), (32, 6486), (35, 6504), (37, 6510), (38, 6522), (39, 6540), (40, 6549), (44, 6573), (46, 6600), (47, 6603), (50, 6621),

Gene: Rita_8 Start: 6447, Stop: 6779, Start Num: 7

Candidate Starts for Rita_8:

(Start: 7 @6447 has 222 MA's), (10, 6471), (12, 6489), (15, 6528), (18, 6549), (20, 6564), (23, 6582), (25, 6600), (29, 6624), (32, 6636), (34, 6642), (35, 6654), (37, 6660), (39, 6690), (44, 6723),

Gene: RitaG_8 Start: 6443, Stop: 6772, Start Num: 7

Candidate Starts for RitaG_8:

(1, 6173), (2, 6350), (Start: 7 @6443 has 222 MA's), (10, 6467), (13, 6506), (17, 6539), (19, 6551), (21, 6572), (23, 6578), (24, 6581), (26, 6599), (32, 6632), (35, 6650), (37, 6656), (38, 6668), (39, 6686), (40, 6695), (44, 6719), (46, 6746), (47, 6749), (50, 6767),

Gene: Rockne_8 Start: 6460, Stop: 6789, Start Num: 7

Candidate Starts for Rockne_8:

(1, 6190), (2, 6367), (Start: 7 @6460 has 222 MA's), (10, 6484), (13, 6523), (17, 6556), (19, 6568), (21, 6589), (23, 6595), (24, 6598), (26, 6616), (32, 6649), (35, 6667), (37, 6673), (38, 6685), (39, 6703),

(40, 6712), (44, 6736), (46, 6763), (47, 6766), (50, 6784),

Gene: RockyHorror_9 Start: 6295, Stop: 6624, Start Num: 7

Candidate Starts for RockyHorror_9:

(Start: 7 @6295 has 222 MA's), (10, 6319), (13, 6358), (17, 6391), (19, 6403), (21, 6424), (23, 6430), (26, 6451), (29, 6472), (32, 6484), (35, 6502), (37, 6508), (38, 6520), (39, 6538), (40, 6547), (44, 6571), (46, 6598), (47, 6601), (50, 6619),

Gene: Royals2015_8 Start: 6446, Stop: 6778, Start Num: 7

Candidate Starts for Royals2015_8:

(Start: 7 @6446 has 222 MA's), (10, 6470), (12, 6488), (15, 6527), (18, 6548), (20, 6563), (23, 6581), (25, 6599), (29, 6623), (34, 6641), (35, 6653), (37, 6659), (39, 6689), (44, 6722),

Gene: Ruby_8 Start: 6449, Stop: 6778, Start Num: 7

Candidate Starts for Ruby_8:

(Start: 7 @6449 has 222 MA's), (10, 6473), (13, 6512), (17, 6545), (19, 6557), (21, 6578), (23, 6584), (24, 6587), (26, 6605), (32, 6638), (35, 6656), (37, 6662), (39, 6692), (40, 6701), (44, 6725), (46, 6752), (47, 6755), (50, 6773),

Gene: SG4_8 Start: 6446, Stop: 6778, Start Num: 7

Candidate Starts for SG4_8:

(Start: 7 @6446 has 222 MA's), (10, 6470), (12, 6488), (15, 6527), (18, 6548), (20, 6563), (23, 6581), (25, 6599), (29, 6623), (32, 6635), (34, 6641), (35, 6653), (37, 6659), (39, 6689), (44, 6722),

Gene: Saal_8 Start: 6432, Stop: 6761, Start Num: 7

Candidate Starts for Saal_8:

(1, 6162), (2, 6339), (Start: 7 @6432 has 222 MA's), (10, 6456), (13, 6495), (17, 6528), (19, 6540), (21, 6561), (23, 6567), (24, 6570), (26, 6588), (32, 6621), (35, 6639), (37, 6645), (38, 6657), (39, 6675), (40, 6684), (44, 6708), (46, 6735), (47, 6738), (50, 6756),

Gene: Sabbb_8 Start: 6447, Stop: 6776, Start Num: 7

Candidate Starts for Sabbb_8:

(Start: 7 @6447 has 222 MA's), (10, 6471), (13, 6510), (17, 6543), (21, 6576), (23, 6582), (24, 6585), (26, 6603), (32, 6636), (35, 6654), (37, 6660), (39, 6690), (40, 6699), (44, 6723), (46, 6750), (47, 6753), (50, 6771),

Gene: Sandalphon_8 Start: 6460, Stop: 6789, Start Num: 7

Candidate Starts for Sandalphon_8:

(1, 6190), (2, 6367), (Start: 7 @6460 has 222 MA's), (10, 6484), (13, 6523), (17, 6556), (19, 6568), (21, 6589), (23, 6595), (24, 6598), (26, 6616), (32, 6649), (35, 6667), (37, 6673), (38, 6685), (39, 6703), (40, 6712), (44, 6736), (46, 6763), (47, 6766), (50, 6784),

Gene: Sarma624_9 Start: 6295, Stop: 6624, Start Num: 7

Candidate Starts for Sarma624_9:

(Start: 7 @6295 has 222 MA's), (10, 6319), (17, 6391), (19, 6403), (21, 6424), (23, 6430), (24, 6433), (26, 6451), (32, 6484), (35, 6502), (37, 6508), (38, 6520), (39, 6538), (40, 6547), (44, 6571), (46, 6598), (47, 6601), (50, 6619),

Gene: Sassafras_8 Start: 6443, Stop: 6772, Start Num: 7

Candidate Starts for Sassafras_8:

(1, 6173), (2, 6350), (Start: 7 @6443 has 222 MA's), (10, 6467), (13, 6506), (17, 6539), (19, 6551), (21, 6572), (23, 6578), (24, 6581), (26, 6599), (32, 6632), (35, 6650), (37, 6656), (38, 6668), (39, 6686), (40, 6695), (44, 6719), (46, 6746), (47, 6749), (50, 6767),

Gene: SassyB_8 Start: 6446, Stop: 6778, Start Num: 7

Candidate Starts for SassyB_8:

(Start: 7 @6446 has 222 MA's), (10, 6470), (12, 6488), (15, 6527), (18, 6548), (20, 6563), (23, 6581), (25, 6599), (29, 6623), (34, 6641), (35, 6653), (37, 6659), (39, 6689), (44, 6722),

Gene: Scottish_8 Start: 6443, Stop: 6772, Start Num: 7

Candidate Starts for Scottish_8:

(1, 6173), (2, 6350), (Start: 7 @6443 has 222 MA's), (10, 6467), (13, 6506), (17, 6539), (19, 6551), (21, 6572), (23, 6578), (24, 6581), (26, 6599), (32, 6632), (35, 6650), (37, 6656), (38, 6668), (39, 6686), (40, 6695), (44, 6719), (46, 6746), (47, 6749), (50, 6767),

Gene: Seabastian_8 Start: 6442, Stop: 6771, Start Num: 7

Candidate Starts for Seabastian_8:

(1, 6172), (2, 6349), (Start: 7 @6442 has 222 MA's), (10, 6466), (13, 6505), (17, 6538), (19, 6550), (21, 6571), (23, 6577), (24, 6580), (26, 6598), (32, 6631), (35, 6649), (37, 6655), (39, 6685), (40, 6694), (44, 6718), (46, 6745), (47, 6748), (50, 6766),

Gene: Seagreen_9 Start: 6296, Stop: 6625, Start Num: 7

Candidate Starts for Seagreen_9:

(Start: 7 @6296 has 222 MA's), (10, 6320), (13, 6359), (17, 6392), (19, 6404), (21, 6425), (23, 6431), (24, 6434), (26, 6452), (29, 6473), (32, 6485), (35, 6503), (37, 6509), (39, 6539), (40, 6548), (44, 6572), (46, 6599), (47, 6602), (50, 6620),

Gene: Shauna1_8 Start: 6446, Stop: 6778, Start Num: 7

Candidate Starts for Shauna1_8:

(Start: 7 @6446 has 222 MA's), (10, 6470), (12, 6488), (15, 6527), (18, 6548), (23, 6581), (25, 6599), (29, 6623), (32, 6635), (34, 6641), (35, 6653), (37, 6659), (39, 6689), (43, 6707), (44, 6722),

Gene: ShiLan_8 Start: 6444, Stop: 6773, Start Num: 7

Candidate Starts for ShiLan_8:

(1, 6174), (2, 6351), (Start: 7 @6444 has 222 MA's), (10, 6468), (13, 6507), (17, 6540), (19, 6552), (21, 6573), (23, 6579), (24, 6582), (26, 6600), (32, 6633), (35, 6651), (37, 6657), (38, 6669), (39, 6687), (40, 6696), (44, 6720), (45, 6738), (46, 6747), (47, 6750), (50, 6768),

Gene: ShowerHandel_8 Start: 6445, Stop: 6774, Start Num: 7

Candidate Starts for ShowerHandel_8:

(1, 6175), (2, 6352), (Start: 7 @6445 has 222 MA's), (10, 6469), (13, 6508), (17, 6541), (19, 6553), (21, 6574), (23, 6580), (24, 6583), (26, 6601), (32, 6634), (35, 6652), (37, 6658), (38, 6670), (39, 6688), (40, 6697), (44, 6721), (45, 6739), (46, 6748), (47, 6751), (50, 6769),

Gene: ShroomBoi_8 Start: 6446, Stop: 6778, Start Num: 7

Candidate Starts for ShroomBoi_8:

(Start: 7 @6446 has 222 MA's), (10, 6470), (12, 6488), (15, 6527), (18, 6548), (20, 6563), (23, 6581), (25, 6599), (29, 6623), (34, 6641), (35, 6653), (37, 6659), (39, 6689), (44, 6722),

Gene: SiSi_8 Start: 6431, Stop: 6763, Start Num: 7

Candidate Starts for SiSi_8:

(Start: 7 @6431 has 222 MA's), (10, 6455), (12, 6473), (15, 6512), (18, 6533), (20, 6548), (23, 6566), (25, 6584), (29, 6608), (32, 6620), (34, 6626), (35, 6638), (37, 6644), (39, 6674), (44, 6707),

Gene: SimranZ1_9 Start: 6296, Stop: 6625, Start Num: 7

Candidate Starts for SimranZ1_9:

(Start: 7 @6296 has 222 MA's), (10, 6320), (13, 6359), (17, 6392), (19, 6404), (21, 6425), (23, 6431), (24, 6434), (26, 6452), (32, 6485), (35, 6503), (37, 6509), (38, 6521), (39, 6539), (40, 6548), (44, 6572), (46, 6599), (47, 6602), (50, 6620),

Gene: Sparkdehlily_8 Start: 6459, Stop: 6788, Start Num: 7

Candidate Starts for Sparkdehlily_8:

(1, 6189), (2, 6366), (Start: 7 @6459 has 222 MA's), (10, 6483), (13, 6522), (17, 6555), (19, 6567), (21, 6588), (23, 6594), (24, 6597), (26, 6615), (32, 6648), (35, 6666), (37, 6672), (38, 6684), (39, 6702), (40, 6711), (44, 6735), (46, 6762), (47, 6765), (50, 6783),

Gene: Spartacus_8 Start: 6434, Stop: 6766, Start Num: 7

Candidate Starts for Spartacus_8:

(Start: 7 @6434 has 222 MA's), (9, 6455), (10, 6458), (13, 6497), (18, 6536), (23, 6569), (24, 6572), (28, 6605), (29, 6611), (35, 6641), (37, 6647), (39, 6677), (44, 6710), (46, 6737), (49, 6749), (50, 6758),

Gene: Spikelee_9 Start: 6296, Stop: 6625, Start Num: 7

Candidate Starts for Spikelee_9:

(Start: 7 @6296 has 222 MA's), (10, 6320), (13, 6359), (17, 6392), (19, 6404), (21, 6425), (23, 6431), (24, 6434), (26, 6452), (32, 6485), (35, 6503), (37, 6509), (38, 6521), (39, 6539), (40, 6548), (44, 6572), (46, 6599), (47, 6602), (50, 6620),

Gene: Spoonbill_8 Start: 6445, Stop: 6774, Start Num: 7

Candidate Starts for Spoonbill_8:

(Start: 7 @6445 has 222 MA's), (10, 6469), (13, 6508), (17, 6541), (19, 6553), (21, 6574), (23, 6580), (24, 6583), (26, 6601), (32, 6634), (35, 6652), (37, 6658), (38, 6670), (39, 6688), (40, 6697), (44, 6721), (46, 6748), (47, 6751), (50, 6769),

Gene: Squirty_9 Start: 6294, Stop: 6623, Start Num: 7

Candidate Starts for Squirty_9:

(Start: 7 @6294 has 222 MA's), (10, 6318), (13, 6357), (17, 6390), (19, 6402), (21, 6423), (23, 6429), (24, 6432), (26, 6450), (32, 6483), (35, 6501), (37, 6507), (38, 6519), (39, 6537), (40, 6546), (44, 6570), (46, 6597), (47, 6600), (50, 6618),

Gene: StAnnes_8 Start: 6446, Stop: 6778, Start Num: 7

Candidate Starts for StAnnes_8:

(Start: 7 @6446 has 222 MA's), (10, 6470), (12, 6488), (15, 6527), (18, 6548), (20, 6563), (23, 6581), (25, 6599), (29, 6623), (34, 6641), (35, 6653), (37, 6659), (39, 6689), (44, 6722),

Gene: Stap_9 Start: 6296, Stop: 6625, Start Num: 7

Candidate Starts for Stap_9:

(Start: 7 @6296 has 222 MA's), (10, 6320), (13, 6359), (17, 6392), (19, 6404), (21, 6425), (23, 6431), (24, 6434), (26, 6452), (29, 6473), (32, 6485), (35, 6503), (37, 6509), (39, 6539), (40, 6548), (44, 6572), (46, 6599), (47, 6602), (50, 6620),

Gene: Starcevich_9 Start: 6296, Stop: 6625, Start Num: 7

Candidate Starts for Starcevich_9:

(Start: 7 @6296 has 222 MA's), (10, 6320), (13, 6359), (17, 6392), (19, 6404), (21, 6425), (23, 6431), (24, 6434), (26, 6452), (32, 6485), (35, 6503), (37, 6509), (38, 6521), (39, 6539), (40, 6548), (44, 6572), (46, 6599), (47, 6602), (50, 6620),

Gene: Strokeseat_8 Start: 6433, Stop: 6762, Start Num: 7

Candidate Starts for Strokeseat_8:

(1, 6163), (2, 6340), (Start: 7 @6433 has 222 MA's), (10, 6457), (13, 6496), (17, 6529), (19, 6541), (21, 6562), (23, 6568), (24, 6571), (26, 6589), (32, 6622), (35, 6640), (37, 6646), (39, 6676), (40, 6685), (44, 6709), (46, 6736), (47, 6739), (50, 6757),

Gene: SuperGrey_8 Start: 6446, Stop: 6778, Start Num: 7

Candidate Starts for SuperGrey_8:

(Start: 7 @6446 has 222 MA's), (10, 6470), (12, 6488), (15, 6527), (18, 6548), (20, 6563), (23, 6581), (25, 6599), (29, 6623), (32, 6635), (34, 6641), (35, 6653), (37, 6659), (39, 6689), (44, 6722),

Gene: SwagPigglett_8 Start: 6445, Stop: 6774, Start Num: 7

Candidate Starts for SwagPigglett_8:

(1, 6175), (2, 6352), (Start: 7 @6445 has 222 MA's), (10, 6469), (13, 6508), (17, 6541), (19, 6553), (21, 6574), (23, 6580), (24, 6583), (26, 6601), (32, 6634), (35, 6652), (37, 6658), (38, 6670), (39, 6688), (40, 6697), (44, 6721), (45, 6739), (46, 6748), (47, 6751), (50, 6769),

Gene: TChen_9 Start: 6903, Stop: 7235, Start Num: 7

Candidate Starts for TChen_9:

(Start: 7 @6903 has 222 MA's), (10, 6927), (15, 6987), (18, 7008), (19, 7014), (27, 7074), (29, 7083), (31, 7089), (33, 7095), (40, 7155), (41, 7158), (49, 7218), (50, 7227),

Gene: TDanisky_8 Start: 6459, Stop: 6788, Start Num: 7

Candidate Starts for TDanisky_8:

(1, 6189), (2, 6366), (Start: 7 @6459 has 222 MA's), (10, 6483), (13, 6522), (17, 6555), (19, 6567), (21, 6588), (23, 6594), (24, 6597), (26, 6615), (32, 6648), (35, 6666), (37, 6672), (38, 6684), (39, 6702), (40, 6711), (44, 6735), (46, 6762), (47, 6765), (50, 6783),

Gene: Taj_8 Start: 6446, Stop: 6778, Start Num: 7

Candidate Starts for Taj_8:

(Start: 7 @6446 has 222 MA's), (10, 6470), (12, 6488), (15, 6527), (18, 6548), (20, 6563), (23, 6581), (25, 6599), (29, 6623), (32, 6635), (34, 6641), (35, 6653), (37, 6659), (39, 6689), (44, 6722),

Gene: ThetaBob_9 Start: 6783, Stop: 7115, Start Num: 7

Candidate Starts for ThetaBob_9:

(Start: 7 @6783 has 222 MA's), (10, 6807), (15, 6867), (18, 6888), (19, 6894), (27, 6954), (29, 6963), (31, 6969), (33, 6975), (40, 7035), (41, 7038), (49, 7098), (50, 7107),

Gene: TootsiePop_9 Start: 6299, Stop: 6628, Start Num: 7

Candidate Starts for TootsiePop_9:

(Start: 7 @6299 has 222 MA's), (10, 6323), (13, 6362), (17, 6395), (19, 6407), (21, 6428), (23, 6434), (24, 6437), (26, 6455), (29, 6476), (32, 6488), (35, 6506), (37, 6512), (38, 6524), (39, 6542), (40, 6551), (44, 6575), (46, 6602), (47, 6605), (50, 6623),

Gene: Tootsieroll_9 Start: 6296, Stop: 6625, Start Num: 7

Candidate Starts for Tootsieroll_9:

(Start: 7 @6296 has 222 MA's), (10, 6320), (13, 6359), (17, 6392), (19, 6404), (21, 6425), (23, 6431), (24, 6434), (26, 6452), (29, 6473), (32, 6485), (35, 6503), (37, 6509), (38, 6521), (39, 6539), (40, 6548), (44, 6572), (46, 6599), (47, 6602), (50, 6620),

Gene: Toron_9 Start: 6903, Stop: 7235, Start Num: 7

Candidate Starts for Toron_9:

(Start: 7 @6903 has 222 MA's), (10, 6927), (15, 6987), (19, 7014), (27, 7074), (29, 7083), (31, 7089), (33, 7095), (40, 7155), (41, 7158), (49, 7218), (50, 7227),

Gene: Totinger_9 Start: 6297, Stop: 6626, Start Num: 7

Candidate Starts for Totinger_9:

(Start: 7 @6297 has 222 MA's), (10, 6321), (13, 6360), (17, 6393), (19, 6405), (21, 6426), (23, 6432), (24, 6435), (26, 6453), (32, 6486), (35, 6504), (37, 6510), (38, 6522), (39, 6540), (40, 6549), (44, 6573), (46, 6600), (47, 6603), (50, 6621),

Gene: Tweety_8 Start: 6446, Stop: 6778, Start Num: 7

Candidate Starts for Tweety_8:

(Start: 7 @6446 has 222 MA's), (10, 6470), (12, 6488), (15, 6527), (18, 6548), (20, 6563), (23, 6581), (25, 6599), (29, 6623), (34, 6641), (35, 6653), (37, 6659), (39, 6689), (44, 6722),

Gene: UncleRicky_9 Start: 6296, Stop: 6625, Start Num: 7

Candidate Starts for UncleRicky_9:

(Start: 7 @6296 has 222 MA's), (10, 6320), (13, 6359), (17, 6392), (19, 6404), (21, 6425), (23, 6431), (24, 6434), (26, 6452), (32, 6485), (35, 6503), (37, 6509), (39, 6539), (40, 6548), (44, 6572), (46, 6599), (47, 6602), (50, 6620),

Gene: VRedHorse_8 Start: 6445, Stop: 6774, Start Num: 7

Candidate Starts for VRedHorse_8:

(1, 6175), (2, 6352), (Start: 7 @6445 has 222 MA's), (10, 6469), (13, 6508), (17, 6541), (21, 6574), (23, 6580), (24, 6583), (26, 6601), (32, 6634), (35, 6652), (37, 6658), (38, 6670), (39, 6688), (40, 6697), (44, 6721), (46, 6748), (47, 6751), (50, 6769),

Gene: Velveteen_9 Start: 6295, Stop: 6624, Start Num: 7

Candidate Starts for Velveteen_9:

(Start: 7 @6295 has 222 MA's), (10, 6319), (17, 6391), (19, 6403), (21, 6424), (23, 6430), (24, 6433), (26, 6451), (32, 6484), (35, 6502), (37, 6508), (38, 6520), (39, 6538), (40, 6547), (44, 6571), (46, 6598), (47, 6601), (50, 6619),

Gene: Veteran_8 Start: 6460, Stop: 6789, Start Num: 7

Candidate Starts for Veteran_8:

(1, 6190), (2, 6367), (Start: 7 @6460 has 222 MA's), (10, 6484), (13, 6523), (17, 6556), (19, 6568), (21, 6589), (23, 6595), (24, 6598), (26, 6616), (29, 6637), (32, 6649), (35, 6667), (37, 6673), (39, 6703), (40, 6712), (44, 6736), (46, 6763), (47, 6766), (50, 6784),

Gene: Wachhund_8 Start: 6436, Stop: 6765, Start Num: 7

Candidate Starts for Wachhund_8:

(Start: 7 @6436 has 222 MA's), (10, 6460), (13, 6499), (17, 6532), (19, 6544), (21, 6565), (23, 6571), (24, 6574), (26, 6592), (32, 6625), (35, 6643), (37, 6649), (38, 6661), (39, 6679), (40, 6688), (44, 6712), (46, 6739), (47, 6742), (50, 6760),

Gene: Wee_8 Start: 6446, Stop: 6778, Start Num: 7

Candidate Starts for Wee_8:

(Start: 7 @6446 has 222 MA's), (10, 6470), (12, 6488), (15, 6527), (18, 6548), (20, 6563), (23, 6581), (25, 6599), (29, 6623), (32, 6635), (34, 6641), (35, 6653), (37, 6659), (39, 6689), (44, 6722),

Gene: Whatsapiecost_8 Start: 6446, Stop: 6778, Start Num: 7

Candidate Starts for Whatsapiecost_8:

(Start: 7 @6446 has 222 MA's), (10, 6470), (12, 6488), (15, 6527), (18, 6548), (20, 6563), (23, 6581), (25, 6599), (29, 6623), (34, 6641), (35, 6653), (37, 6659), (39, 6689), (44, 6722),

Gene: Whouxphf_8 Start: 6435, Stop: 6764, Start Num: 7

Candidate Starts for Whouxphf_8:

(Start: 7 @6435 has 222 MA's), (10, 6459), (13, 6498), (17, 6531), (19, 6543), (21, 6564), (23, 6570), (24, 6573), (26, 6591), (32, 6624), (35, 6642), (37, 6648), (39, 6678), (40, 6687), (44, 6711), (46, 6738), (47, 6741), (50, 6759),

Gene: WillSterrel_8 Start: 6434, Stop: 6766, Start Num: 7

Candidate Starts for WillSterrel_8:

(Start: 7 @6434 has 222 MA's), (9, 6455), (10, 6458), (13, 6497), (18, 6536), (23, 6569), (24, 6572), (28, 6605), (29, 6611), (35, 6641), (37, 6647), (39, 6677), (44, 6710), (46, 6737), (49, 6749), (50, 6758),

Gene: XFactor_8 Start: 6446, Stop: 6778, Start Num: 7

Candidate Starts for XFactor_8:

(Start: 7 @6446 has 222 MA's), (10, 6470), (12, 6488), (15, 6527), (18, 6548), (20, 6563), (23, 6581), (25, 6599), (29, 6623), (34, 6641), (35, 6653), (37, 6659), (39, 6689), (44, 6722),

Gene: Yorick_8 Start: 6443, Stop: 6772, Start Num: 7

Candidate Starts for Yorick_8:

(1, 6173), (2, 6350), (Start: 7 @6443 has 222 MA's), (10, 6467), (13, 6506), (17, 6539), (19, 6551), (21, 6572), (23, 6578), (24, 6581), (26, 6599), (29, 6620), (32, 6632), (35, 6650), (37, 6656), (38, 6668), (39, 6686), (40, 6695), (44, 6719), (45, 6737), (46, 6746), (47, 6749), (50, 6767),

Gene: Zerg_8 Start: 6444, Stop: 6773, Start Num: 7

Candidate Starts for Zerg_8:

(1, 6174), (2, 6351), (Start: 7 @6444 has 222 MA's), (10, 6468), (13, 6507), (17, 6540), (21, 6573), (23, 6579), (24, 6582), (26, 6600), (32, 6633), (35, 6651), (37, 6657), (38, 6669), (39, 6687), (40, 6696), (44, 6720), (46, 6747), (47, 6750), (50, 6768),

Gene: Zizzle_8 Start: 6447, Stop: 6776, Start Num: 7

Candidate Starts for Zizzle_8:

(1, 6177), (2, 6354), (Start: 7 @6447 has 222 MA's), (10, 6471), (13, 6510), (17, 6543), (19, 6555), (21, 6576), (23, 6582), (24, 6585), (26, 6603), (32, 6636), (35, 6654), (37, 6660), (38, 6672), (39, 6690), (40, 6699), (44, 6723), (45, 6741), (46, 6750), (47, 6753), (50, 6771),