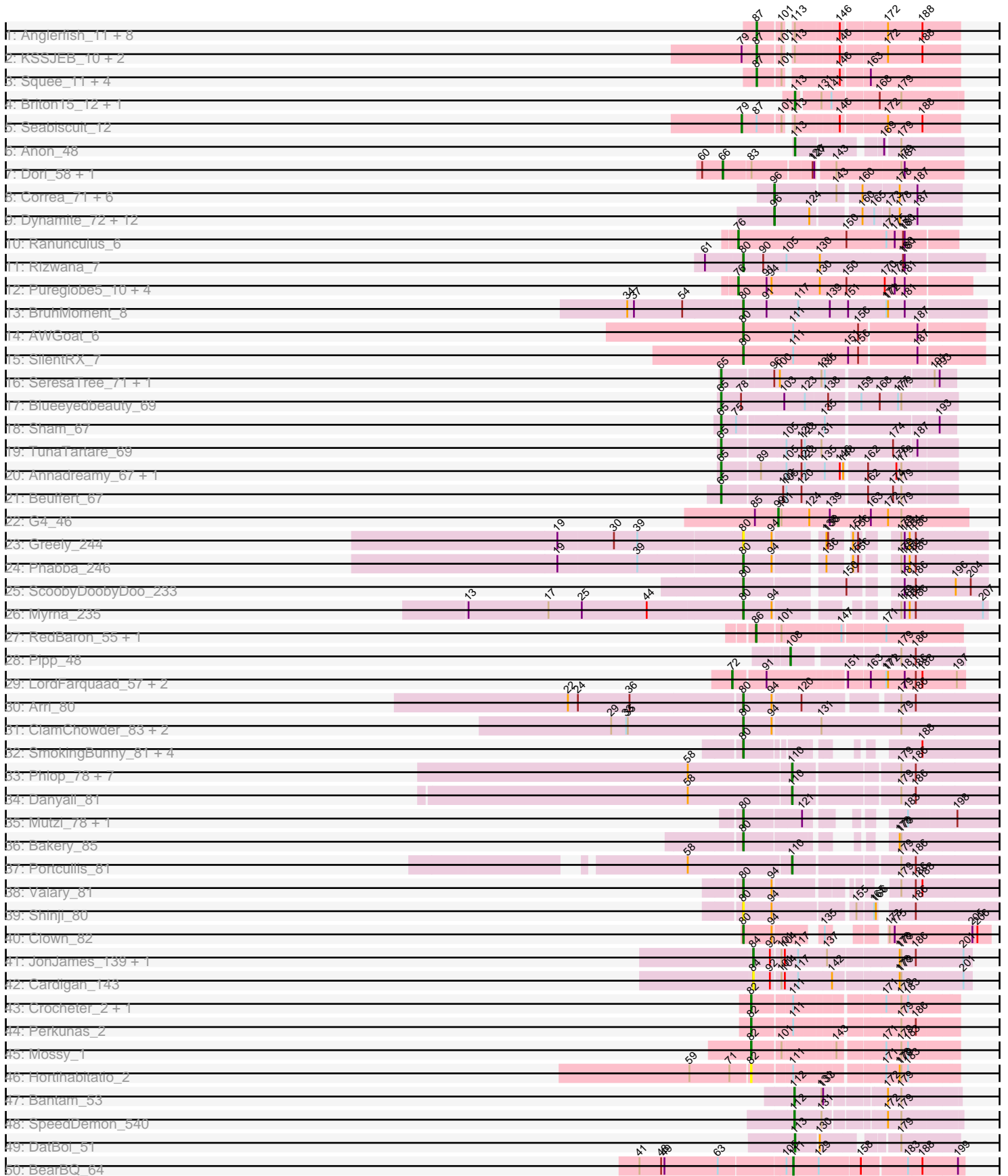
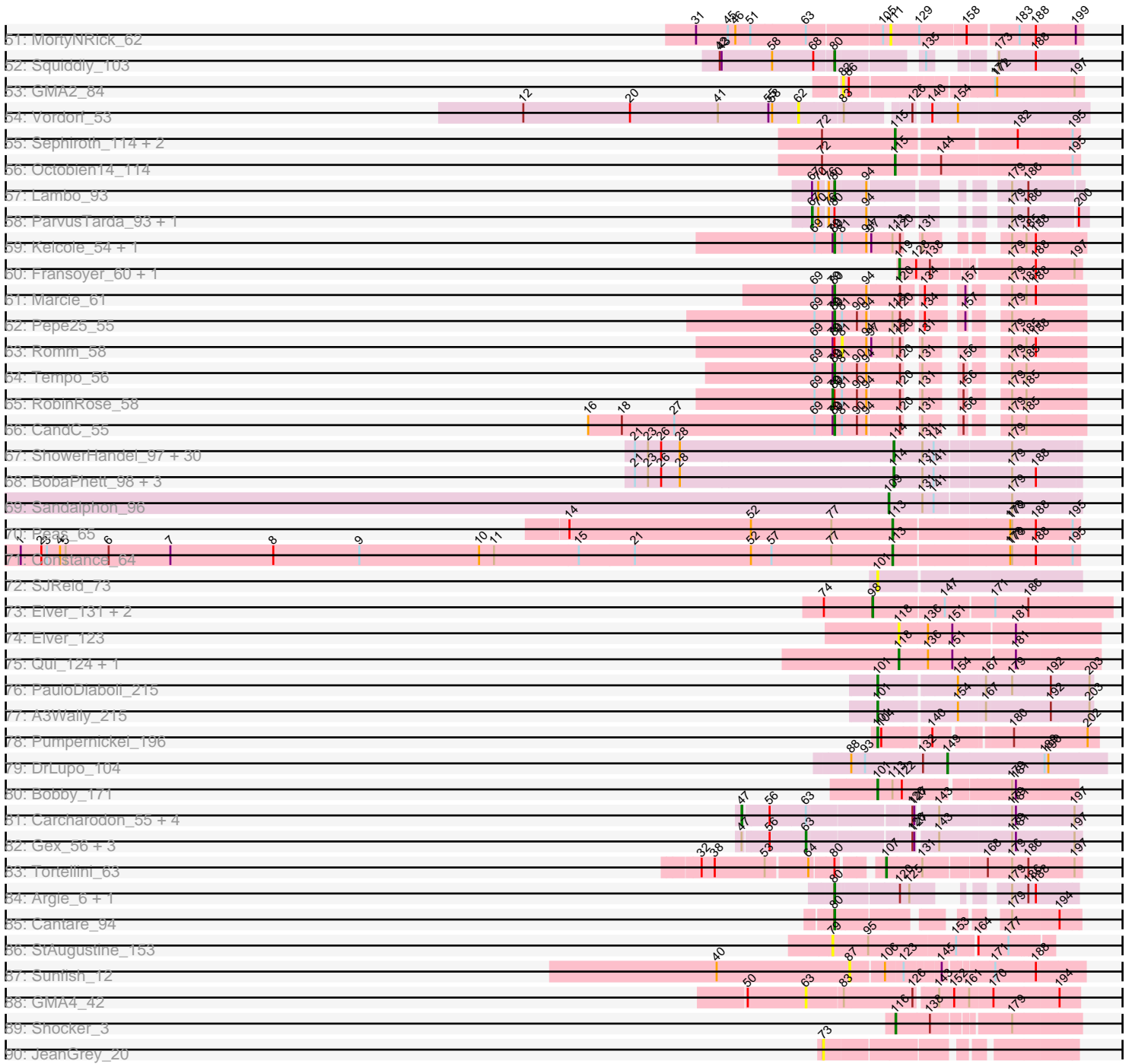


Pham 196301



Pham 196301



Note: Tracks are now grouped by subcluster and scaled. Switching in subcluster is indicated by changes in track color. Track scale is now set by default to display the region 30 bp upstream of start 1 to 30 bp downstream of the last possible start. If this default region is judged to be packed too tightly with annotated starts, the track will be further scaled to only show that region of the ORF with annotated starts. This action will be indicated by adding "Zoomed" to the title. For starts, yellow indicates the location of called starts comprised solely of Glimmer/GeneMark auto-annotations, green indicates the location of called starts with at least 1 manual gene annotation.

Pham 196301 Report

This analysis was run 12/09/24 on database version 580.

Pham number 196301 has 198 members, 20 are drafts.

Phages represented in each track:

- Track 1 : Anglerfish_11, Arcanine_11, Rajelicia_10, PinkPlastic_9, Manatee_11, DreamCatcher_12, McGuire_11, Slagathor_11, Dynamix_11
- Track 2 : KSSJEB_10, U2_10, Switzer_11
- Track 3 : Squee_11, Naira_11, BeesKnees_11, Atkinbua_11, Fenn_11
- Track 4 : Briton15_12, Ichabod_11
- Track 5 : Seabiscuit_12
- Track 6 : Anon_48
- Track 7 : Dori_58, Mask_58
- Track 8 : Correa_71, Cheesy_73, Nason_72, Elsa_72, Tribby_76, Xenomorph_69, Arcadia_72
- Track 9 : Dynamite_72, Kardesai_72, Mudcat_68, Heisenberger_71, NapoleonB_73, JEGGS_71, Mooshroom_73, Circum_74, BenitoAntonio_71, Benllo_73, Hankly_72, GoCrazy_69, KeaneyLin_68
- Track 10 : Ranunculus_6
- Track 11 : Rizwana_7
- Track 12 : Pureglobe5_10, Pointis_8, Odyssey395_10, Beagle_10, MellowYellow_8
- Track 13 : BruhMoment_8
- Track 14 : AWGoat_6
- Track 15 : SilentRX_7
- Track 16 : SeresaTree_71, Faust_71
- Track 17 : Blueeyedbeauty_69
- Track 18 : Sham_67
- Track 19 : TunaTartare_69
- Track 20 : Annadreamy_67, Limpid_66
- Track 21 : Beuffert_67
- Track 22 : G4_46
- Track 23 : Greely_244
- Track 24 : Phabba_246
- Track 25 : ScoobyDoobyDoo_233
- Track 26 : Myrna_235
- Track 27 : RedBaron_55, Nina_52
- Track 28 : Pipp_48
- Track 29 : LordFarquaad_57, Attis_55, SoilAssassin_55
- Track 30 : Arri_80
- Track 31 : ClamChowder_83, Barb_83, Fugax_84
- Track 32 : SmokingBunny_81, Twister6_81, Salvador_80, Togo_80, Evamon_80

- Track 33 : Phlop_78, Gezellig_80, KimmyK_80, RogerDodger_84, CoveyB_81, Halo3_78, PullumCavea_79, Wizard_77
- Track 34 : Danyall_81
- Track 35 : Mutzi_78, YungMoney_79
- Track 36 : Bakery_85
- Track 37 : Portcullis_81
- Track 38 : Valary_81
- Track 39 : Shinji_80
- Track 40 : Clown_82
- Track 41 : JonJames_139, Yvonnetastic_136
- Track 42 : Cardigan_143
- Track 43 : Crocheter_2, Untouchable_2
- Track 44 : Perkunas_2
- Track 45 : Mossy_1
- Track 46 : Hortihabitatio_2
- Track 47 : Bantam_53
- Track 48 : SpeedDemon_540
- Track 49 : DatBoi_51
- Track 50 : BearBQ_64
- Track 51 : MortyNRick_62
- Track 52 : Squiddly_103
- Track 53 : GMA2_84
- Track 54 : Vordorf_53
- Track 55 : Sephiroth_114, Kudefre_118, Syleon_119
- Track 56 : Octobien14_114
- Track 57 : Lambo_93
- Track 58 : ParvusTarda_93, Wojtek_85
- Track 59 : Kelcole_54, OneinaGillian_56
- Track 60 : Fransoyer_60, SadLad_63
- Track 61 : Marcie_61
- Track 62 : Pepe25_55
- Track 63 : Romm_58
- Track 64 : Tempo_56
- Track 65 : RobinRose_58
- Track 66 : CandC_55
- Track 67 : ShowerHandel_97, Gorge_95, Burwell21_90, Brocalys_88, Lizziana_97, Martik_95, LastJedi_87, Clifton_88, Nivrat_96, Crumble_91, LilMoolah_99, Minnie_91, ByChance_87, Yorick_92, Philus_98, James_100, Jaracob_99, Cabrinians_93, Spoonbill_96, Whouxphf_100, FreddyB_106, Maravista_93, NormanBulbieJr_94, Saal_94, OlympiaSaint_100, Pippy_94, Blexus_93, Koella_89, Latretium_99, SwagPigglett_98, Priscilla_97
- Track 68 : BobaPhett_98, ShiLan_99, Zizzle_99, Mattes_97
- Track 69 : Sandalphon_96
- Track 70 : Peas_65
- Track 71 : Constance_64
- Track 72 : SJReid_73
- Track 73 : Elver_131, Paella_133, Qui_133
- Track 74 : Elver_123
- Track 75 : Qui_124, Paella_124
- Track 76 : PauloDiaboli_215
- Track 77 : A3Wally_215
- Track 78 : Pumpernickel_196
- Track 79 : DrLupo_104

- Track 80 : Bobby_171
- Track 81 : Carcharodon_55, Phloss_53, Smurph_55, Parmesanjohn_55, Schnauzer_56
- Track 82 : Gex_56, Magsby_55, Xerxes_55, Pipsqueaks_56
- Track 83 : Tortellini_63
- Track 84 : Argie_6, GodPhather_6
- Track 85 : Cantare_94
- Track 86 : StAugustine_153
- Track 87 : Sunfish_12
- Track 88 : GMA4_42
- Track 89 : Shocker_3
- Track 90 : JeanGrey_20

Summary of Final Annotations (See graph section above for start numbers):

The start number called the most often in the published annotations is 114, it was called in 35 of the 178 non-draft genes in the pham.

Genes that call this "Most Annotated" start:

- Blexus_93, BobaPhett_98, Brocalys_88, Burwell21_90, ByChance_87, Cabrinians_93, Clifton_88, Crumble_91, FreddyB_106, Gorge_95, James_100, Jarcob_99, Koella_89, LastJedi_87, Latretium_99, LilMoolah_99, Lizziana_97, Maravista_93, Martik_95, Mattes_97, Minnie_91, Nivrat_96, NormanBulbieJr_94, OlympiaSaint_100, Philus_98, Pippy_94, Priscilla_97, Saal_94, ShiLan_99, ShowerHandel_97, Spoonbill_96, SwagPigglett_98, Whouxphf_100, Yorick_92, Zizzle_99,

Genes that have the "Most Annotated" start but do not call it:

-

Genes that do not have the "Most Annotated" start:

- A3Wally_215, AWGoat_6, Anglerfish_11, Annadreamy_67, Anon_48, Arcadia_72, Arcanine_11, Argie_6, Arri_80, Atkinbua_11, Attis_55, Bakery_85, Bantam_53, Barb_83, Beagle_10, BearBQ_64, BeesKnees_11, BenitoAntonio_71, Benllo_73, Beuffert_67, Blueeyedbeauty_69, Bobby_171, Briton15_12, BruhMoment_8, CandC_55, Cantare_94, Carcharodon_55, Cardigan_143, Cheesy_73, Circum_74, ClamChowder_83, Clown_82, Constance_64, Correa_71, CoveyB_81, Crocheter_2, Danyall_81, DatBoi_51, Dori_58, DrLupo_104, DreamCatcher_12, Dynamite_72, Dynamix_11, Elsa_72, Elver_123, Elver_131, Evamon_80, Faust_71, Fenn_11, Fransoyer_60, Fugax_84, G4_46, GMA2_84, GMA4_42, Gex_56, Gezellig_80, GoCrazy_69, GodPhather_6, Greely_244, Halo3_78, Hankly_72, Heisenberger_71, Hortihabitatio_2, Ichabod_11, JEGGS_71, JeanGrey_20, JonJames_139, KSSJEB_10, Kardesai_72, KeaneyLin_68, Kelcole_54, KimmyK_80, Kudedefre_118, Lambo_93, Limpid_66, LordFarquaad_57, Magsby_55, Manatee_11, Marcie_61, Mask_58, McGuire_11, MellowYellow_8, Mooshroom_73, MortyNRick_62, Mossy_1, Mudcat_68, Mutzi_78, Myrna_235, Naira_11, NapoleonB_73, Nason_72, Nina_52, Octobien14_114, Odyssey395_10, OneinaGillian_56, Paella_124, Paella_133, Parmesanjohn_55, ParvusTarda_93, PauloDiaboli_215, Peas_65, Pepe25_55, Perkunas_2, Phabba_246, Phlop_78, Phloss_53, PinkPlastic_9, Pipp_48, Pipsqueaks_56, Pointis_8, Portcullis_81, PullumCavea_79, Pumpernickel_196,

Pureglobe5_10, Qui_124, Qui_133, Rajelicia_10, Ranunculus_6, RedBaron_55, Rizwana_7, RobinRose_58, RogerDodger_84, Romm_58, SJReid_73, SadLad_63, Salvador_80, Sandalphon_96, Schnauzer_56, ScoobyDoobyDoo_233, Seabiscuit_12, Sephiroth_114, SeresaTree_71, Sham_67, Shinji_80, Shocker_3, SilentRX_7, Slagathor_11, SmokingBunny_81, Smurph_55, SoilAssassin_55, SpeedDemon_540, Squee_11, Squiddly_103, StAugustine_153, Sunfish_12, Switzer_11, Syleon_119, Tempo_56, Togo_80, Tortellini_63, Tribby_76, TunaTartare_69, Twister6_81, U2_10, Untouchable_2, Valary_81, Vordorf_53, Wizard_77, Wojtek_85, Xenomorph_69, Xerxes_55, YungMoney_79, Yvonnestic_136,

Summary by start number:

Start 47:

- Found in 9 of 198 (4.5%) of genes in pham
- Manual Annotations of this start: 5 of 178
- Called 55.6% of time when present
- Phage (with cluster) where this start called: Carcharodon_55 (N), Parmesanjohn_55 (N), Phloss_53 (N), Schnauzer_56 (N), Smurph_55 (N),

Start 62:

- Found in 1 of 198 (0.5%) of genes in pham
- No Manual Annotations of this start.
- Called 100.0% of time when present
- Phage (with cluster) where this start called: Vordorf_53 (DT),

Start 63:

- Found in 12 of 198 (6.1%) of genes in pham
- Manual Annotations of this start: 4 of 178
- Called 41.7% of time when present
- Phage (with cluster) where this start called: GMA4_42 (singleton), Gex_56 (N), Magsby_55 (N), Pipsqueaks_56 (N), Xerxes_55 (N),

Start 65:

- Found in 8 of 198 (4.0%) of genes in pham
- Manual Annotations of this start: 7 of 178
- Called 100.0% of time when present
- Phage (with cluster) where this start called: Annadreamy_67 (BK1), Beuffert_67 (BK1), Blueeyedbeauty_69 (BK1), Faust_71 (BK1), Limpid_66 (BK1), SeresaTree_71 (BK1), Sham_67 (BK1), TunaTartare_69 (BK1),

Start 66:

- Found in 2 of 198 (1.0%) of genes in pham
- Manual Annotations of this start: 2 of 178
- Called 100.0% of time when present
- Phage (with cluster) where this start called: Dori_58 (AD), Mask_58 (AD),

Start 67:

- Found in 3 of 198 (1.5%) of genes in pham
- Manual Annotations of this start: 2 of 178
- Called 66.7% of time when present
- Phage (with cluster) where this start called: ParvusTarda_93 (DV), Wojtek_85 (DV),

Start 72:

- Found in 7 of 198 (3.5%) of genes in pham
- Manual Annotations of this start: 3 of 178
- Called 42.9% of time when present
- Phage (with cluster) where this start called: Attis_55 (CZ2), LordFarquaad_57 (CZ2), SoilAssassin_55 (CZ2),

Start 73:

- Found in 1 of 198 (0.5%) of genes in pham
- No Manual Annotations of this start.
- Called 100.0% of time when present
- Phage (with cluster) where this start called: JeanGrey_20 (singleton),

Start 76:

- Found in 9 of 198 (4.5%) of genes in pham
- Manual Annotations of this start: 6 of 178
- Called 66.7% of time when present
- Phage (with cluster) where this start called: Beagle_10 (AP2), MellowYellow_8 (AP2), Odyssey395_10 (AP2), Pointis_8 (AP2), Pureglobe5_10 (AP2), Ranunculus_6 (AP),

Start 79:

- Found in 13 of 198 (6.6%) of genes in pham
- Manual Annotations of this start: 2 of 178
- Called 23.1% of time when present
- Phage (with cluster) where this start called: RobinRose_58 (EG), Seabiscuit_12 (A1), StAugustine_153 (singleton),

Start 80:

- Found in 39 of 198 (19.7%) of genes in pham
- Manual Annotations of this start: 32 of 178
- Called 87.2% of time when present
- Phage (with cluster) where this start called: AWGoat_6 (AP4), Argie_6 (W), Arri_80 (DC1), Bakery_85 (DC1), Barb_83 (DC1), BruhMoment_8 (AP3), CandC_55 (EG), Cantare_94 (singleton), ClamChowder_83 (DC1), Clown_82 (DC2), Evamon_80 (DC1), Fugax_84 (DC1), GodPhather_6 (W), Greely_244 (C2), Kelcole_54 (EG), Lambo_93 (DV), Marcie_61 (EG), Mutzi_78 (DC1), Myrna_235 (C2), OneinaGillian_56 (EG), Pepe25_55 (EG), Phabba_246 (C2), Rizwana_7 (AP1), Salvador_80 (DC1), ScoobyDoobyDoo_233 (C2), Shinji_80 (DC1), SilentRX_7 (AP4), SmokingBunny_81 (DC1), Squiddly_103 (DN2), Tempo_56 (EG), Togo_80 (DC1), Twister6_81 (DC1), Valary_81 (DC1), YungMoney_79 (DC1),

Start 81:

- Found in 7 of 198 (3.5%) of genes in pham
- No Manual Annotations of this start.
- Called 14.3% of time when present
- Phage (with cluster) where this start called: Romm_58 (EG),

Start 82:

- Found in 6 of 198 (3.0%) of genes in pham
- Manual Annotations of this start: 4 of 178
- Called 100.0% of time when present

- Phage (with cluster) where this start called: Crocheter_2 (DJ), GMA2_84 (DS), Hortihabitatio_2 (DJ), Mossy_1 (DJ), Perunas_2 (DJ), Untouchable_2 (DJ),

Start 84:

- Found in 3 of 198 (1.5%) of genes in pham
- Manual Annotations of this start: 2 of 178
- Called 100.0% of time when present
- Phage (with cluster) where this start called: Cardigan_143 (DD), JonJames_139 (DD), Yvonnetastic_136 (DD),

Start 86:

- Found in 3 of 198 (1.5%) of genes in pham
- Manual Annotations of this start: 1 of 178
- Called 66.7% of time when present
- Phage (with cluster) where this start called: Nina_52 (CT), RedBaron_55 (CT),

Start 87:

- Found in 19 of 198 (9.6%) of genes in pham
- Manual Annotations of this start: 17 of 178
- Called 94.7% of time when present
- Phage (with cluster) where this start called: Anglerfish_11 (A1), Arcanine_11 (A1), Atkinbua_11 (A1), BeesKnees_11 (A1), DreamCatcher_12 (A1), Dynamix_11 (A1), Fenn_11 (A1), KSSJEB_10 (A1), Manatee_11 (A1), McGuire_11 (A1), Naira_11 (A1), PinkPlastic_9 (A1), Rajelicia_10 (A1), Slagathor_11 (A1), Squee_11 (A1), Sunfish_12 (singleton), Switzer_11 (A1), U2_10 (A1),

Start 96:

- Found in 22 of 198 (11.1%) of genes in pham
- Manual Annotations of this start: 19 of 178
- Called 90.9% of time when present
- Phage (with cluster) where this start called: Arcadia_72 (AM), BenitoAntonio_71 (AM), Benllo_73 (AM), Cheesy_73 (AM), Circum_74 (AM), Correa_71 (AM), Dynamite_72 (AM), Elsa_72 (AM), GoCrazy_69 (AM), Hankly_72 (AM), Heisenberger_71 (AM), JEGGS_71 (AM), Kardesai_72 (AM), KeaneyLin_68 (AM), Mooshroom_73 (AM), Mudcat_68 (AM), NapoleonB_73 (AM), Nason_72 (AM), Tribby_76 (AM), Xenomorph_69 (AM),

Start 98:

- Found in 3 of 198 (1.5%) of genes in pham
- Manual Annotations of this start: 2 of 178
- Called 100.0% of time when present
- Phage (with cluster) where this start called: Elver_131 (FK), Paella_133 (FK), Qui_133 (FK),

Start 99:

- Found in 1 of 198 (0.5%) of genes in pham
- Manual Annotations of this start: 1 of 178
- Called 100.0% of time when present
- Phage (with cluster) where this start called: G4_46 (BW),

Start 101:

- Found in 30 of 198 (15.2%) of genes in pham
- Manual Annotations of this start: 4 of 178

- Called 16.7% of time when present
- Phage (with cluster) where this start called: A3Wally_215 (GD1), Bobby_171 (J), PauloDiaboli_215 (GD1), Pumpnickel_196 (GD4), SJReid_73 (FC),

Start 107:

- Found in 1 of 198 (0.5%) of genes in pham
- Manual Annotations of this start: 1 of 178
- Called 100.0% of time when present
- Phage (with cluster) where this start called: Tortellini_63 (P2),

Start 108:

- Found in 1 of 198 (0.5%) of genes in pham
- Manual Annotations of this start: 1 of 178
- Called 100.0% of time when present
- Phage (with cluster) where this start called: Pipp_48 (CV),

Start 109:

- Found in 1 of 198 (0.5%) of genes in pham
- Manual Annotations of this start: 1 of 178
- Called 100.0% of time when present
- Phage (with cluster) where this start called: Sandalphon_96 (F1),

Start 110:

- Found in 10 of 198 (5.1%) of genes in pham
- Manual Annotations of this start: 8 of 178
- Called 100.0% of time when present
- Phage (with cluster) where this start called: CoveyB_81 (DC1), Danyall_81 (DC1), Gezellig_80 (DC1), Halo3_78 (DC1), KimmyK_80 (DC1), Phlop_78 (DC1), Portcullis_81 (DC1), PullumCavea_79 (DC1), RogerDodger_84 (DC1), Wizard_77 (DC1),

Start 111:

- Found in 8 of 198 (4.0%) of genes in pham
- Manual Annotations of this start: 1 of 178
- Called 25.0% of time when present
- Phage (with cluster) where this start called: BearBQ_64 (DN), MortyNRick_62 (DN),

Start 112:

- Found in 2 of 198 (1.0%) of genes in pham
- Manual Annotations of this start: 2 of 178
- Called 100.0% of time when present
- Phage (with cluster) where this start called: Bantam_53 (DL), SpeedDemon_540 (DL),

Start 113:

- Found in 24 of 198 (12.1%) of genes in pham
- Manual Annotations of this start: 6 of 178
- Called 25.0% of time when present
- Phage (with cluster) where this start called: Anon_48 (A15), Briton15_12 (A1), Constance_64 (FA), DatBoi_51 (DL), Ichabod_11 (A1), Peas_65 (FA),

Start 114:

- Found in 35 of 198 (17.7%) of genes in pham

- Manual Annotations of this start: 35 of 178
- Called 100.0% of time when present
- Phage (with cluster) where this start called: Blexus_93 (F1), BobaPhett_98 (F1), Brocalys_88 (F1), Burwell21_90 (F1), ByChance_87 (F1), Cabrinians_93 (F1), Clifton_88 (F1), Crumble_91 (F1), FreddyB_106 (F1), Gorge_95 (F1), James_100 (F1), Jarcob_99 (F1), Koella_89 (F1), LastJedi_87 (F1), Latretium_99 (F1), LilMoolah_99 (F1), Lizziana_97 (F1), Maravista_93 (F1), Martik_95 (F1), Mattes_97 (F1), Minnie_91 (F1), Nivrat_96 (F1), NormanBulbieJr_94 (F1), OlympiaSaint_100 (F1), Philus_98 (F1), Pippy_94 (F1), Priscilla_97 (F1), Saal_94 (F1), ShiLan_99 (F1), ShowerHandel_97 (F1), Spoonbill_96 (F1), SwagPiggett_98 (F1), Whouxphf_100 (F1), Yorick_92 (F1), Zizzle_99 (F1),

Start 115:

- Found in 4 of 198 (2.0%) of genes in pham
- Manual Annotations of this start: 4 of 178
- Called 100.0% of time when present
- Phage (with cluster) where this start called: Kudetre_118 (DU1), Octobien14_114 (DU1), Sephiroth_114 (DU1), Syleon_119 (DU1),

Start 116:

- Found in 1 of 198 (0.5%) of genes in pham
- Manual Annotations of this start: 1 of 178
- Called 100.0% of time when present
- Phage (with cluster) where this start called: Shocker_3 (singleton),

Start 118:

- Found in 3 of 198 (1.5%) of genes in pham
- Manual Annotations of this start: 2 of 178
- Called 100.0% of time when present
- Phage (with cluster) where this start called: Elver_123 (FK), Paella_124 (FK), Qui_124 (FK),

Start 119:

- Found in 2 of 198 (1.0%) of genes in pham
- Manual Annotations of this start: 2 of 178
- Called 100.0% of time when present
- Phage (with cluster) where this start called: Fransoyer_60 (EG), SadLad_63 (EG),

Start 149:

- Found in 1 of 198 (0.5%) of genes in pham
- Manual Annotations of this start: 1 of 178
- Called 100.0% of time when present
- Phage (with cluster) where this start called: DrLupo_104 (H2),

Summary by clusters:

There are 39 clusters represented in this pham: DN, GD1, singleton, DJ, AP2, AP3, DD, AP1, DL, AP4, FA, FC, DV, GD4, DT, FK, DS, A15, A1, CZ2, DN2, C2, CT, P2, AD, EG, J, AM, N, AP, BK1, W, DU1, DC2, CV, DC1, F1, H2, BW,

Info for manual annotations of cluster A1:

- Start number 79 was manually annotated 1 time for cluster A1.
- Start number 87 was manually annotated 17 times for cluster A1.

- Start number 113 was manually annotated 2 times for cluster A1.

Info for manual annotations of cluster A15:

- Start number 113 was manually annotated 1 time for cluster A15.

Info for manual annotations of cluster AD:

- Start number 66 was manually annotated 2 times for cluster AD.

Info for manual annotations of cluster AM:

- Start number 96 was manually annotated 19 times for cluster AM.

Info for manual annotations of cluster AP:

- Start number 76 was manually annotated 1 time for cluster AP.

Info for manual annotations of cluster AP1:

- Start number 80 was manually annotated 1 time for cluster AP1.

Info for manual annotations of cluster AP2:

- Start number 76 was manually annotated 5 times for cluster AP2.

Info for manual annotations of cluster AP3:

- Start number 80 was manually annotated 1 time for cluster AP3.

Info for manual annotations of cluster AP4:

- Start number 80 was manually annotated 2 times for cluster AP4.

Info for manual annotations of cluster BK1:

- Start number 65 was manually annotated 7 times for cluster BK1.

Info for manual annotations of cluster BW:

- Start number 99 was manually annotated 1 time for cluster BW.

Info for manual annotations of cluster C2:

- Start number 80 was manually annotated 3 times for cluster C2.

Info for manual annotations of cluster CT:

- Start number 86 was manually annotated 1 time for cluster CT.

Info for manual annotations of cluster CV:

- Start number 108 was manually annotated 1 time for cluster CV.

Info for manual annotations of cluster CZ2:

- Start number 72 was manually annotated 3 times for cluster CZ2.

Info for manual annotations of cluster DC1:

- Start number 80 was manually annotated 13 times for cluster DC1.
- Start number 110 was manually annotated 8 times for cluster DC1.

Info for manual annotations of cluster DC2:

- Start number 80 was manually annotated 1 time for cluster DC2.

Info for manual annotations of cluster DD:

- Start number 84 was manually annotated 2 times for cluster DD.

Info for manual annotations of cluster DJ:

- Start number 82 was manually annotated 4 times for cluster DJ.

Info for manual annotations of cluster DL:

- Start number 112 was manually annotated 2 times for cluster DL.
- Start number 113 was manually annotated 1 time for cluster DL.

Info for manual annotations of cluster DN:

- Start number 111 was manually annotated 1 time for cluster DN.

Info for manual annotations of cluster DN2:

- Start number 80 was manually annotated 1 time for cluster DN2.

Info for manual annotations of cluster DU1:

- Start number 115 was manually annotated 4 times for cluster DU1.

Info for manual annotations of cluster DV:

- Start number 67 was manually annotated 2 times for cluster DV.
- Start number 80 was manually annotated 1 time for cluster DV.

Info for manual annotations of cluster EG:

- Start number 79 was manually annotated 1 time for cluster EG.
- Start number 80 was manually annotated 6 times for cluster EG.
- Start number 119 was manually annotated 2 times for cluster EG.

Info for manual annotations of cluster F1:

- Start number 109 was manually annotated 1 time for cluster F1.
- Start number 114 was manually annotated 35 times for cluster F1.

Info for manual annotations of cluster FA:

- Start number 113 was manually annotated 2 times for cluster FA.

Info for manual annotations of cluster FK:

- Start number 98 was manually annotated 2 times for cluster FK.
- Start number 118 was manually annotated 2 times for cluster FK.

Info for manual annotations of cluster GD1:

- Start number 101 was manually annotated 2 times for cluster GD1.

Info for manual annotations of cluster GD4:

- Start number 101 was manually annotated 1 time for cluster GD4.

Info for manual annotations of cluster H2:

- Start number 149 was manually annotated 1 time for cluster H2.

Info for manual annotations of cluster J:

- Start number 101 was manually annotated 1 time for cluster J.

Info for manual annotations of cluster N:

- Start number 47 was manually annotated 5 times for cluster N.
- Start number 63 was manually annotated 4 times for cluster N.

Info for manual annotations of cluster P2:

- Start number 107 was manually annotated 1 time for cluster P2.

Info for manual annotations of cluster W:

- Start number 80 was manually annotated 2 times for cluster W.

Gene Information:

Gene: A3Wally_215 Start: 115440, Stop: 115123, Start Num: 101

Candidate Starts for A3Wally_215:

(Start: 101 @115440 has 4 MA's), (154, 115323), (167, 115284), (192, 115188), (203, 115128),

Gene: AWGoat_6 Start: 2566, Stop: 2979, Start Num: 80

Candidate Starts for AWGoat_6:

(Start: 80 @2566 has 32 MA's), (Start: 111 @2656 has 1 MA's), (156, 2773), (187, 2869),

Gene: Anglerfish_11 Start: 6625, Stop: 6939, Start Num: 87

Candidate Starts for Anglerfish_11:

(Start: 87 @6625 has 17 MA's), (Start: 101 @6664 has 4 MA's), (Start: 113 @6673 has 6 MA's), (146, 6742), (172, 6817), (188, 6877),

Gene: Annadreamy_67 Start: 53881, Stop: 54282, Start Num: 65

Candidate Starts for Annadreamy_67:

(Start: 65 @53881 has 7 MA's), (89, 53947), (105, 53992), (120, 54019), (123, 54025), (135, 54061), (146, 54088), (148, 54094), (162, 54130), (176, 54181), (179, 54187),

Gene: Anon_48 Start: 31013, Stop: 30756, Start Num: 113

Candidate Starts for Anon_48:

(Start: 113 @31013 has 6 MA's), (169, 30884), (179, 30860),

Gene: Arcadia_72 Start: 44474, Stop: 44782, Start Num: 96

Candidate Starts for Arcadia_72:

(Start: 96 @44474 has 19 MA's), (143, 44576), (160, 44612), (178, 44675), (187, 44705),

Gene: Arcanine_11 Start: 6591, Stop: 6905, Start Num: 87

Candidate Starts for Arcanine_11:

(Start: 87 @6591 has 17 MA's), (Start: 101 @6630 has 4 MA's), (Start: 113 @6639 has 6 MA's), (146, 6708), (172, 6783), (188, 6843),

Gene: Argie_6 Start: 3283, Stop: 3579, Start Num: 80

Candidate Starts for Argie_6:

(Start: 80 @3283 has 32 MA's), (120, 3376), (125, 3391), (179, 3481), (186, 3505), (188, 3517),

Gene: Arri_80 Start: 52921, Stop: 53367, Start Num: 80

Candidate Starts for Arri_80:

(22, 52615), (24, 52633), (36, 52726), (Start: 80 @52921 has 32 MA's), (94, 52969), (120, 53017), (179, 53173), (186, 53197),

Gene: Atkinbua_11 Start: 6636, Stop: 6950, Start Num: 87

Candidate Starts for Atkinbua_11:

(Start: 87 @6636 has 17 MA's), (Start: 101 @6675 has 4 MA's), (146, 6753), (163, 6798),

Gene: Attis_55 Start: 39035, Stop: 39415, Start Num: 72

Candidate Starts for Attis_55:

(Start: 72 @39035 has 3 MA's), (91, 39089), (151, 39218), (163, 39254), (171, 39281), (172, 39284), (181, 39314), (186, 39332), (188, 39344), (197, 39401),

Gene: Bakery_85 Start: 55359, Stop: 55733, Start Num: 80

Candidate Starts for Bakery_85:

(Start: 80 @55359 has 32 MA's), (178, 55536), (179, 55539),

Gene: Bantam_53 Start: 43734, Stop: 44000, Start Num: 112

Candidate Starts for Bantam_53:

(Start: 112 @43734 has 2 MA's), (131, 43782), (133, 43785), (172, 43878), (179, 43902),

Gene: Barb_83 Start: 53513, Stop: 53983, Start Num: 80

Candidate Starts for Barb_83:

(29, 53279), (33, 53306), (35, 53309), (Start: 80 @53513 has 32 MA's), (94, 53561), (131, 53645), (179, 53789),

Gene: Beagle_10 Start: 3455, Stop: 3862, Start Num: 76

Candidate Starts for Beagle_10:

(Start: 76 @3455 has 6 MA's), (91, 3506), (94, 3515), (130, 3602), (150, 3650), (170, 3716), (175, 3734), (181, 3752),

Gene: BearBQ_64 Start: 41458, Stop: 41745, Start Num: 111

Candidate Starts for BearBQ_64:

(41, 41194), (48, 41230), (49, 41236), (Start: 63 @41332 has 4 MA's), (105, 41446), (Start: 111 @41458 has 1 MA's), (129, 41503), (158, 41575), (183, 41653), (188, 41677), (199, 41734),

Gene: BeesKnees_11 Start: 6720, Stop: 7034, Start Num: 87

Candidate Starts for BeesKnees_11:

(Start: 87 @6720 has 17 MA's), (Start: 101 @6759 has 4 MA's), (146, 6837), (163, 6882),

Gene: BenitoAntonio_71 Start: 44114, Stop: 44425, Start Num: 96

Candidate Starts for BenitoAntonio_71:

(Start: 96 @44114 has 19 MA's), (124, 44177), (160, 44255), (165, 44276), (173, 44300), (178, 44318), (187, 44348),

Gene: Benllo_73 Start: 44792, Stop: 45103, Start Num: 96

Candidate Starts for Benllo_73:

(Start: 96 @44792 has 19 MA's), (124, 44855), (160, 44933), (165, 44954), (173, 44978), (178, 44996), (187, 45026),

Gene: Beuffert_67 Start: 55006, Stop: 55407, Start Num: 65

Candidate Starts for Beuffert_67:

(Start: 65 @55006 has 7 MA's), (102, 55111), (105, 55117), (120, 55144), (162, 55255), (174, 55300), (179, 55312),

Gene: Blexus_93 Start: 53556, Stop: 53837, Start Num: 114

Candidate Starts for Blexus_93:

(21, 53145), (23, 53166), (26, 53187), (28, 53217), (Start: 114 @53556 has 35 MA's), (131, 53601), (141, 53619), (179, 53736),

Gene: Blueeyedbeauty_69 Start: 54393, Stop: 54800, Start Num: 65

Candidate Starts for Blueeyedbeauty_69:

(Start: 65 @54393 has 7 MA's), (78, 54429), (103, 54507), (123, 54543), (138, 54582), (159, 54633), (168, 54666), (177, 54699), (179, 54705),

Gene: BobaPhett_98 Start: 55238, Stop: 55519, Start Num: 114

Candidate Starts for BobaPhett_98:

(21, 54827), (23, 54848), (26, 54869), (28, 54899), (Start: 114 @55238 has 35 MA's), (131, 55283), (141, 55301), (179, 55418), (188, 55454),

Gene: Bobby_171 Start: 94727, Stop: 95017, Start Num: 101

Candidate Starts for Bobby_171:

(Start: 101 @94727 has 4 MA's), (Start: 113 @94751 has 6 MA's), (122, 94766), (179, 94919), (181, 94925),

Gene: Briton15_12 Start: 6774, Stop: 7046, Start Num: 113

Candidate Starts for Briton15_12:

(Start: 113 @6774 has 6 MA's), (131, 6813), (141, 6831), (168, 6909), (179, 6948),

Gene: Brocalys_88 Start: 50717, Stop: 50998, Start Num: 114

Candidate Starts for Brocalys_88:

(21, 50306), (23, 50327), (26, 50348), (28, 50378), (Start: 114 @50717 has 35 MA's), (131, 50762), (141, 50780), (179, 50897),

Gene: BruhMoment_8 Start: 3480, Stop: 3902, Start Num: 80

Candidate Starts for BruhMoment_8:

(34, 3276), (37, 3288), (54, 3375), (Start: 80 @3480 has 32 MA's), (91, 3522), (117, 3579), (139, 3636), (151, 3669), (171, 3735), (172, 3738), (181, 3768),

Gene: Burwell21_90 Start: 53003, Stop: 53284, Start Num: 114

Candidate Starts for Burwell21_90:

(21, 52592), (23, 52613), (26, 52634), (28, 52664), (Start: 114 @53003 has 35 MA's), (131, 53048), (141, 53066), (179, 53183),

Gene: ByChance_87 Start: 49075, Stop: 49356, Start Num: 114

Candidate Starts for ByChance_87:

(21, 48664), (23, 48685), (26, 48706), (28, 48736), (Start: 114 @49075 has 35 MA's), (131, 49120), (141, 49138), (179, 49255),

Gene: Cabrinians_93 Start: 52638, Stop: 52919, Start Num: 114

Candidate Starts for Cabrinians_93:

(21, 52227), (23, 52248), (26, 52269), (28, 52299), (Start: 114 @52638 has 35 MA's), (131, 52683), (141, 52701), (179, 52818),

Gene: CandC_55 Start: 37729, Stop: 37433, Start Num: 80

Candidate Starts for CandC_55:

(16, 38122), (18, 38068), (27, 37984), (69, 37759), (Start: 79 @37732 has 2 MA's), (Start: 80 @37729 has 32 MA's), (81, 37717), (90, 37693), (94, 37678), (120, 37630), (131, 37621), (156, 37585), (179, 37543), (185, 37522),

Gene: Cantare_94 Start: 71064, Stop: 71369, Start Num: 80

Candidate Starts for Cantare_94:

(Start: 80 @71064 has 32 MA's), (179, 71268), (194, 71337),

Gene: Carcharodon_55 Start: 36177, Stop: 36665, Start Num: 47

Candidate Starts for Carcharodon_55:

(Start: 47 @36177 has 5 MA's), (56, 36213), (Start: 63 @36267 has 4 MA's), (126, 36420), (127, 36423), (143, 36450), (179, 36561), (181, 36567), (197, 36654),

Gene: Cardigan_143 Start: 79014, Stop: 79379, Start Num: 84

Candidate Starts for Cardigan_143:

(Start: 84 @79014 has 2 MA's), (92, 79044), (Start: 101 @79059 has 4 MA's), (104, 79065), (117, 79089), (142, 79149), (178, 79257), (179, 79260), (201, 79365),

Gene: Cheesy_73 Start: 44267, Stop: 44575, Start Num: 96

Candidate Starts for Cheesy_73:

(Start: 96 @44267 has 19 MA's), (143, 44369), (160, 44405), (178, 44468), (187, 44498),

Gene: Circum_74 Start: 44882, Stop: 45193, Start Num: 96

Candidate Starts for Circum_74:

(Start: 96 @44882 has 19 MA's), (124, 44945), (160, 45023), (165, 45044), (173, 45068), (178, 45086), (187, 45116),

Gene: ClamChowder_83 Start: 53513, Stop: 53983, Start Num: 80

Candidate Starts for ClamChowder_83:

(29, 53279), (33, 53306), (35, 53309), (Start: 80 @53513 has 32 MA's), (94, 53561), (131, 53645), (179, 53789),

Gene: Clifton_88 Start: 51692, Stop: 51973, Start Num: 114

Candidate Starts for Clifton_88:

(21, 51281), (23, 51302), (26, 51323), (28, 51353), (Start: 114 @51692 has 35 MA's), (131, 51737), (141, 51755), (179, 51872),

Gene: Clown_82 Start: 53661, Stop: 54005, Start Num: 80

Candidate Starts for Clown_82:

(Start: 80 @53661 has 32 MA's), (94, 53709), (135, 53778), (173, 53832), (175, 53841), (205, 53973), (206, 53982),

Gene: Constance_64 Start: 41355, Stop: 41633, Start Num: 113

Candidate Starts for Constance_64:

(1, 39963), (2, 39996), (3, 40005), (4, 40026), (5, 40035), (6, 40104), (7, 40203), (8, 40368), (9, 40506), (10, 40698), (11, 40722), (15, 40857), (21, 40944), (52, 41130), (57, 41163), (77, 41259), (Start: 113 @41355 has 6 MA's), (178, 41529), (179, 41532), (188, 41568), (195, 41622),

Gene: Correa_71 Start: 43841, Stop: 44149, Start Num: 96

Candidate Starts for Correa_71:

(Start: 96 @43841 has 19 MA's), (143, 43943), (160, 43979), (178, 44042), (187, 44072),

Gene: CoveyB_81 Start: 53099, Stop: 53470, Start Num: 110

Candidate Starts for CoveyB_81:

(58, 52916), (Start: 110 @53099 has 8 MA's), (179, 53276), (186, 53300),

Gene: Crocheter_2 Start: 479, Stop: 808, Start Num: 82

Candidate Starts for Crocheter_2:

(Start: 82 @479 has 4 MA's), (Start: 111 @545 has 1 MA's), (171, 686), (179, 713), (183, 725),

Gene: Crumble_91 Start: 49362, Stop: 49643, Start Num: 114

Candidate Starts for Crumble_91:

(21, 48951), (23, 48972), (26, 48993), (28, 49023), (Start: 114 @49362 has 35 MA's), (131, 49407), (141, 49425), (179, 49542),

Gene: Danyall_81 Start: 52793, Stop: 53164, Start Num: 110

Candidate Starts for Danyall_81:

(58, 52610), (Start: 110 @52793 has 8 MA's), (179, 52970), (186, 52994),

Gene: DatBoi_51 Start: 43635, Stop: 43889, Start Num: 113

Candidate Starts for DatBoi_51:

(Start: 113 @43635 has 6 MA's), (130, 43674), (179, 43791),

Gene: Dori_58 Start: 47703, Stop: 48095, Start Num: 66

Candidate Starts for Dori_58:

(60, 47673), (Start: 66 @47703 has 2 MA's), (83, 47751), (126, 47850), (127, 47853), (143, 47880), (179, 47991), (181, 47997),

Gene: DrLupo_104 Start: 65399, Stop: 65650, Start Num: 149

Candidate Starts for DrLupo_104:

(88, 65246), (93, 65267), (132, 65360), (Start: 149 @65399 has 1 MA's), (189, 65552), (190, 65558),

Gene: DreamCatcher_12 Start: 7365, Stop: 7679, Start Num: 87

Candidate Starts for DreamCatcher_12:

(Start: 87 @7365 has 17 MA's), (Start: 101 @7404 has 4 MA's), (Start: 113 @7413 has 6 MA's), (146, 7482), (172, 7557), (188, 7617),

Gene: Dynamite_72 Start: 44325, Stop: 44636, Start Num: 96

Candidate Starts for Dynamite_72:

(Start: 96 @44325 has 19 MA's), (124, 44388), (160, 44466), (165, 44487), (173, 44511), (178, 44529), (187, 44559),

Gene: Dynamix_11 Start: 6722, Stop: 7036, Start Num: 87

Candidate Starts for Dynamix_11:

(Start: 87 @6722 has 17 MA's), (Start: 101 @6761 has 4 MA's), (Start: 113 @6770 has 6 MA's), (146, 6839), (172, 6914), (188, 6974),

Gene: Elsa_72 Start: 44474, Stop: 44782, Start Num: 96

Candidate Starts for Elsa_72:

(Start: 96 @44474 has 19 MA's), (143, 44576), (160, 44612), (178, 44675), (187, 44705),

Gene: Elver_131 Start: 70843, Stop: 71208, Start Num: 98

Candidate Starts for Elver_131:

(74, 70765), (Start: 98 @70843 has 2 MA's), (147, 70954), (171, 71029), (186, 71080),

Gene: Elver_123 Start: 67517, Stop: 67825, Start Num: 118

Candidate Starts for Elver_123:

(Start: 118 @67517 has 2 MA's), (136, 67562), (151, 67601), (181, 67697),

Gene: Evamon_80 Start: 53024, Stop: 53377, Start Num: 80

Candidate Starts for Evamon_80:
(Start: 80 @53024 has 32 MA's), (188, 53219),

Gene: Faust_71 Start: 56000, Stop: 56389, Start Num: 65
Candidate Starts for Faust_71:
(Start: 65 @56000 has 7 MA's), (Start: 96 @56087 has 19 MA's), (100, 56096), (131, 56168), (135, 56174), (191, 56351), (193, 56360),

Gene: Fenn_11 Start: 6952, Stop: 7266, Start Num: 87
Candidate Starts for Fenn_11:
(Start: 87 @6952 has 17 MA's), (Start: 101 @6991 has 4 MA's), (146, 7069), (163, 7114),

Gene: Fransoyer_60 Start: 45317, Stop: 45054, Start Num: 119
Candidate Starts for Fransoyer_60:
(Start: 119 @45317 has 2 MA's), (128, 45290), (138, 45269), (179, 45158), (188, 45122), (197, 45065),

Gene: FreddyB_106 Start: 54284, Stop: 54565, Start Num: 114
Candidate Starts for FreddyB_106:
(21, 53873), (23, 53894), (26, 53915), (28, 53945), (Start: 114 @54284 has 35 MA's), (131, 54329), (141, 54347), (179, 54464),

Gene: Fugax_84 Start: 53505, Stop: 53975, Start Num: 80
Candidate Starts for Fugax_84:
(29, 53271), (33, 53298), (35, 53301), (Start: 80 @53505 has 32 MA's), (94, 53553), (131, 53637), (179, 53781),

Gene: G4_46 Start: 30222, Stop: 30545, Start Num: 99
Candidate Starts for G4_46:
(85, 30180), (Start: 99 @30222 has 1 MA's), (Start: 101 @30228 has 4 MA's), (124, 30276), (139, 30312), (163, 30378), (172, 30408), (179, 30432),

Gene: GMA2_84 Start: 80351, Stop: 80010, Start Num: 82
Candidate Starts for GMA2_84:
(Start: 82 @80351 has 4 MA's), (Start: 86 @80342 has 1 MA's), (171, 80141), (172, 80138), (197, 80021),

Gene: GMA4_42 Start: 31658, Stop: 32065, Start Num: 63
Candidate Starts for GMA4_42:
(50, 31565), (Start: 63 @31658 has 4 MA's), (83, 31715), (126, 31823), (143, 31853), (152, 31877), (161, 31901), (170, 31934), (194, 32033),

Gene: Gex_56 Start: 36283, Stop: 36681, Start Num: 63
Candidate Starts for Gex_56:
(Start: 47 @36193 has 5 MA's), (56, 36229), (Start: 63 @36283 has 4 MA's), (126, 36436), (127, 36439), (143, 36466), (179, 36577), (181, 36583), (197, 36670),

Gene: Gezellig_80 Start: 52852, Stop: 53223, Start Num: 110
Candidate Starts for Gezellig_80:
(58, 52669), (Start: 110 @52852 has 8 MA's), (179, 53029), (186, 53053),

Gene: GoCrazy_69 Start: 43769, Stop: 44080, Start Num: 96
Candidate Starts for GoCrazy_69:

(Start: 96 @43769 has 19 MA's), (124, 43832), (160, 43910), (165, 43931), (173, 43955), (178, 43973), (187, 44003),

Gene: GodPhather_6 Start: 3283, Stop: 3579, Start Num: 80

Candidate Starts for GodPhather_6:

(Start: 80 @3283 has 32 MA's), (120, 3376), (125, 3391), (179, 3481), (186, 3505), (188, 3517),

Gene: Gorge_95 Start: 53911, Stop: 54192, Start Num: 114

Candidate Starts for Gorge_95:

(21, 53500), (23, 53521), (26, 53542), (28, 53572), (Start: 114 @53911 has 35 MA's), (131, 53956), (141, 53974), (179, 54091),

Gene: Greely_244 Start: 137695, Stop: 138051, Start Num: 80

Candidate Starts for Greely_244:

(19, 137374), (30, 137473), (39, 137515), (Start: 80 @137695 has 32 MA's), (94, 137746), (136, 137821), (138, 137824), (154, 137854), (156, 137863), (179, 137905), (181, 137911), (184, 137920), (186, 137929),

Gene: Halo3_78 Start: 53437, Stop: 53808, Start Num: 110

Candidate Starts for Halo3_78:

(58, 53254), (Start: 110 @53437 has 8 MA's), (179, 53614), (186, 53638),

Gene: Hankly_72 Start: 43963, Stop: 44274, Start Num: 96

Candidate Starts for Hankly_72:

(Start: 96 @43963 has 19 MA's), (124, 44026), (160, 44104), (165, 44125), (173, 44149), (178, 44167), (187, 44197),

Gene: Heisenberger_71 Start: 43731, Stop: 44042, Start Num: 96

Candidate Starts for Heisenberger_71:

(Start: 96 @43731 has 19 MA's), (124, 43794), (160, 43872), (165, 43893), (173, 43917), (178, 43935), (187, 43965),

Gene: Hortihabitatio_2 Start: 447, Stop: 776, Start Num: 82

Candidate Starts for Hortihabitatio_2:

(59, 342), (71, 414), (Start: 82 @447 has 4 MA's), (Start: 111 @513 has 1 MA's), (171, 654), (178, 678), (179, 681), (183, 693),

Gene: Ichabod_11 Start: 6739, Stop: 7011, Start Num: 113

Candidate Starts for Ichabod_11:

(Start: 113 @6739 has 6 MA's), (131, 6778), (141, 6796), (168, 6874), (179, 6913),

Gene: JEGGS_71 Start: 43810, Stop: 44121, Start Num: 96

Candidate Starts for JEGGS_71:

(Start: 96 @43810 has 19 MA's), (124, 43873), (160, 43951), (165, 43972), (173, 43996), (178, 44014), (187, 44044),

Gene: James_100 Start: 55293, Stop: 55574, Start Num: 114

Candidate Starts for James_100:

(21, 54882), (23, 54903), (26, 54924), (28, 54954), (Start: 114 @55293 has 35 MA's), (131, 55338), (141, 55356), (179, 55473),

Gene: Jacob_99 Start: 54892, Stop: 55173, Start Num: 114

Candidate Starts for Jacob_99:

(21, 54481), (23, 54502), (26, 54523), (28, 54553), (Start: 114 @54892 has 35 MA's), (131, 54937), (141, 54955), (179, 55072),

Gene: JeanGrey_20 Start: 10459, Stop: 10809, Start Num: 73
Candidate Starts for JeanGrey_20:
(73, 10459),

Gene: JonJames_139 Start: 79256, Stop: 79624, Start Num: 84
Candidate Starts for JonJames_139:
(Start: 84 @79256 has 2 MA's), (92, 79286), (Start: 101 @79301 has 4 MA's), (104, 79307), (117, 79331), (137, 79382), (178, 79502), (179, 79505), (186, 79529), (201, 79610),

Gene: KSSJEB_10 Start: 6483, Stop: 6797, Start Num: 87
Candidate Starts for KSSJEB_10:
(Start: 79 @6456 has 2 MA's), (Start: 87 @6483 has 17 MA's), (Start: 101 @6522 has 4 MA's), (Start: 113 @6531 has 6 MA's), (146, 6600), (172, 6675), (188, 6735),

Gene: Kardesai_72 Start: 44083, Stop: 44394, Start Num: 96
Candidate Starts for Kardesai_72:
(Start: 96 @44083 has 19 MA's), (124, 44146), (160, 44224), (165, 44245), (173, 44269), (178, 44287), (187, 44317),

Gene: KeaneyLin_68 Start: 43769, Stop: 44080, Start Num: 96
Candidate Starts for KeaneyLin_68:
(Start: 96 @43769 has 19 MA's), (124, 43832), (160, 43910), (165, 43931), (173, 43955), (178, 43973), (187, 44003),

Gene: Kelcole_54 Start: 37921, Stop: 37628, Start Num: 80
Candidate Starts for Kelcole_54:
(69, 37951), (Start: 79 @37924 has 2 MA's), (Start: 80 @37921 has 32 MA's), (81, 37909), (94, 37870), (97, 37867), (Start: 113 @37834 has 6 MA's), (120, 37822), (131, 37813), (179, 37735), (185, 37714), (188, 37699),

Gene: KimmyK_80 Start: 53299, Stop: 53670, Start Num: 110
Candidate Starts for KimmyK_80:
(58, 53116), (Start: 110 @53299 has 8 MA's), (179, 53476), (186, 53500),

Gene: Koella_89 Start: 50055, Stop: 50336, Start Num: 114
Candidate Starts for Koella_89:
(21, 49644), (23, 49665), (26, 49686), (28, 49716), (Start: 114 @50055 has 35 MA's), (131, 50100), (141, 50118), (179, 50235),

Gene: Kudrefre_118 Start: 64805, Stop: 65071, Start Num: 115
Candidate Starts for Kudrefre_118:
(Start: 72 @64688 has 3 MA's), (Start: 115 @64805 has 4 MA's), (182, 64979), (195, 65060),

Gene: Lambo_93 Start: 64770, Stop: 65072, Start Num: 80
Candidate Starts for Lambo_93:
(Start: 67 @64743 has 2 MA's), (70, 64752), (Start: 76 @64761 has 6 MA's), (Start: 80 @64770 has 32 MA's), (94, 64818), (179, 64971), (186, 64995),

Gene: LastJedi_87 Start: 51112, Stop: 51393, Start Num: 114
Candidate Starts for LastJedi_87:

(21, 50701), (23, 50722), (26, 50743), (28, 50773), (Start: 114 @51112 has 35 MA's), (131, 51157), (141, 51175), (179, 51292),

Gene: Latretium_99 Start: 54158, Stop: 54439, Start Num: 114

Candidate Starts for Latretium_99:

(21, 53747), (23, 53768), (26, 53789), (28, 53819), (Start: 114 @54158 has 35 MA's), (131, 54203), (141, 54221), (179, 54338),

Gene: LilMoolah_99 Start: 54092, Stop: 54373, Start Num: 114

Candidate Starts for LilMoolah_99:

(21, 53681), (23, 53702), (26, 53723), (28, 53753), (Start: 114 @54092 has 35 MA's), (131, 54137), (141, 54155), (179, 54272),

Gene: Limpid_66 Start: 53880, Stop: 54281, Start Num: 65

Candidate Starts for Limpid_66:

(Start: 65 @53880 has 7 MA's), (89, 53946), (105, 53991), (120, 54018), (123, 54024), (135, 54060), (146, 54087), (148, 54093), (162, 54129), (176, 54180), (179, 54186),

Gene: Lizziana_97 Start: 54360, Stop: 54641, Start Num: 114

Candidate Starts for Lizziana_97:

(21, 53949), (23, 53970), (26, 53991), (28, 54021), (Start: 114 @54360 has 35 MA's), (131, 54405), (141, 54423), (179, 54540),

Gene: LordFarquaad_57 Start: 39016, Stop: 39396, Start Num: 72

Candidate Starts for LordFarquaad_57:

(Start: 72 @39016 has 3 MA's), (91, 39070), (151, 39199), (163, 39235), (171, 39262), (172, 39265), (181, 39295), (186, 39313), (188, 39325), (197, 39382),

Gene: Magsby_55 Start: 36284, Stop: 36682, Start Num: 63

Candidate Starts for Magsby_55:

(Start: 47 @36194 has 5 MA's), (56, 36230), (Start: 63 @36284 has 4 MA's), (126, 36437), (127, 36440), (143, 36467), (179, 36578), (181, 36584), (197, 36671),

Gene: Manatee_11 Start: 6673, Stop: 6987, Start Num: 87

Candidate Starts for Manatee_11:

(Start: 87 @6673 has 17 MA's), (Start: 101 @6712 has 4 MA's), (Start: 113 @6721 has 6 MA's), (146, 6790), (172, 6865), (188, 6925),

Gene: Maravista_93 Start: 55020, Stop: 55301, Start Num: 114

Candidate Starts for Maravista_93:

(21, 54609), (23, 54630), (26, 54651), (28, 54681), (Start: 114 @55020 has 35 MA's), (131, 55065), (141, 55083), (179, 55200),

Gene: Marcie_61 Start: 38811, Stop: 38491, Start Num: 80

Candidate Starts for Marcie_61:

(69, 38841), (Start: 79 @38814 has 2 MA's), (Start: 80 @38811 has 32 MA's), (94, 38760), (120, 38712), (134, 38682), (157, 38637), (179, 38598), (185, 38577), (188, 38562),

Gene: Martik_95 Start: 54823, Stop: 55104, Start Num: 114

Candidate Starts for Martik_95:

(21, 54412), (23, 54433), (26, 54454), (28, 54484), (Start: 114 @54823 has 35 MA's), (131, 54868), (141, 54886), (179, 55003),

Gene: Mask_58 Start: 48446, Stop: 48838, Start Num: 66

Candidate Starts for Mask_58:

(60, 48416), (Start: 66 @48446 has 2 MA's), (83, 48494), (126, 48593), (127, 48596), (143, 48623), (179, 48734), (181, 48740),

Gene: Mattes_97 Start: 54029, Stop: 54310, Start Num: 114

Candidate Starts for Mattes_97:

(21, 53618), (23, 53639), (26, 53660), (28, 53690), (Start: 114 @54029 has 35 MA's), (131, 54074), (141, 54092), (179, 54209), (188, 54245),

Gene: McGuire_11 Start: 6718, Stop: 7032, Start Num: 87

Candidate Starts for McGuire_11:

(Start: 87 @6718 has 17 MA's), (Start: 101 @6757 has 4 MA's), (Start: 113 @6766 has 6 MA's), (146, 6835), (172, 6910), (188, 6970),

Gene: MellowYellow_8 Start: 3065, Stop: 3472, Start Num: 76

Candidate Starts for MellowYellow_8:

(Start: 76 @3065 has 6 MA's), (91, 3116), (94, 3125), (130, 3212), (150, 3260), (170, 3326), (175, 3344), (181, 3362),

Gene: Minnie_91 Start: 54441, Stop: 54722, Start Num: 114

Candidate Starts for Minnie_91:

(21, 54030), (23, 54051), (26, 54072), (28, 54102), (Start: 114 @54441 has 35 MA's), (131, 54486), (141, 54504), (179, 54621),

Gene: Mooshroom_73 Start: 44083, Stop: 44394, Start Num: 96

Candidate Starts for Mooshroom_73:

(Start: 96 @44083 has 19 MA's), (124, 44146), (160, 44224), (165, 44245), (173, 44269), (178, 44287), (187, 44317),

Gene: MortyNRick_62 Start: 41583, Stop: 41870, Start Num: 111

Candidate Starts for MortyNRick_62:

(31, 41283), (45, 41334), (46, 41346), (51, 41370), (Start: 63 @41457 has 4 MA's), (105, 41571), (Start: 111 @41583 has 1 MA's), (129, 41628), (158, 41700), (183, 41778), (188, 41802), (199, 41859),

Gene: Mossy_1 Start: 220, Stop: 549, Start Num: 82

Candidate Starts for Mossy_1:

(Start: 82 @220 has 4 MA's), (Start: 101 @268 has 4 MA's), (143, 352), (171, 427), (179, 454), (183, 466),

Gene: Mudcat_68 Start: 45168, Stop: 45479, Start Num: 96

Candidate Starts for Mudcat_68:

(Start: 96 @45168 has 19 MA's), (124, 45231), (160, 45309), (165, 45330), (173, 45354), (178, 45372), (187, 45402),

Gene: Mutzi_78 Start: 53560, Stop: 53943, Start Num: 80

Candidate Starts for Mutzi_78:

(Start: 80 @53560 has 32 MA's), (121, 53656), (183, 53764), (198, 53842),

Gene: Myrna_235 Start: 137260, Stop: 137607, Start Num: 80

Candidate Starts for Myrna_235:

(13, 136774), (17, 136918), (25, 136978), (44, 137095), (Start: 80 @137260 has 32 MA's), (94, 137311), (179, 137461), (181, 137467), (184, 137476), (186, 137485), (207, 137599),

Gene: Naira_11 Start: 6952, Stop: 7266, Start Num: 87

Candidate Starts for Naira_11:

(Start: 87 @6952 has 17 MA's), (Start: 101 @6991 has 4 MA's), (146, 7069), (163, 7114),

Gene: NapoleonB_73 Start: 44325, Stop: 44636, Start Num: 96

Candidate Starts for NapoleonB_73:

(Start: 96 @44325 has 19 MA's), (124, 44388), (160, 44466), (165, 44487), (173, 44511), (178, 44529), (187, 44559),

Gene: Nason_72 Start: 44474, Stop: 44782, Start Num: 96

Candidate Starts for Nason_72:

(Start: 96 @44474 has 19 MA's), (143, 44576), (160, 44612), (178, 44675), (187, 44705),

Gene: Nina_52 Start: 37854, Stop: 37525, Start Num: 86

Candidate Starts for Nina_52:

(Start: 86 @37854 has 1 MA's), (Start: 101 @37815 has 4 MA's), (147, 37722), (171, 37653),

Gene: Nivrat_96 Start: 53965, Stop: 54246, Start Num: 114

Candidate Starts for Nivrat_96:

(21, 53554), (23, 53575), (26, 53596), (28, 53626), (Start: 114 @53965 has 35 MA's), (131, 54010), (141, 54028), (179, 54145),

Gene: NormanBulbieJr_94 Start: 54069, Stop: 54350, Start Num: 114

Candidate Starts for NormanBulbieJr_94:

(21, 53658), (23, 53679), (26, 53700), (28, 53730), (Start: 114 @54069 has 35 MA's), (131, 54114), (141, 54132), (179, 54249),

Gene: Octobien14_114 Start: 63585, Stop: 63860, Start Num: 115

Candidate Starts for Octobien14_114:

(Start: 72 @63468 has 3 MA's), (Start: 115 @63585 has 4 MA's), (144, 63651), (195, 63849),

Gene: Odyssey395_10 Start: 3459, Stop: 3866, Start Num: 76

Candidate Starts for Odyssey395_10:

(Start: 76 @3459 has 6 MA's), (91, 3510), (94, 3519), (130, 3606), (150, 3654), (170, 3720), (175, 3738), (181, 3756),

Gene: OlympiaSaint_100 Start: 54235, Stop: 54516, Start Num: 114

Candidate Starts for OlympiaSaint_100:

(21, 53824), (23, 53845), (26, 53866), (28, 53896), (Start: 114 @54235 has 35 MA's), (131, 54280), (141, 54298), (179, 54415),

Gene: OneinaGillian_56 Start: 37823, Stop: 37530, Start Num: 80

Candidate Starts for OneinaGillian_56:

(69, 37853), (Start: 79 @37826 has 2 MA's), (Start: 80 @37823 has 32 MA's), (81, 37811), (94, 37772), (97, 37769), (Start: 113 @37736 has 6 MA's), (120, 37724), (131, 37715), (179, 37637), (185, 37616), (188, 37601),

Gene: Paella_133 Start: 71406, Stop: 71771, Start Num: 98

Candidate Starts for Paella_133:

(74, 71328), (Start: 98 @71406 has 2 MA's), (147, 71517), (171, 71592), (186, 71643),

Gene: Paella_124 Start: 68080, Stop: 68388, Start Num: 118

Candidate Starts for Paella_124:

(Start: 118 @68080 has 2 MA's), (136, 68125), (151, 68164), (181, 68260),

Gene: Parmesanjohn_55 Start: 36197, Stop: 36685, Start Num: 47

Candidate Starts for Parmesanjohn_55:

(Start: 47 @36197 has 5 MA's), (56, 36233), (Start: 63 @36287 has 4 MA's), (126, 36440), (127, 36443), (143, 36470), (179, 36581), (181, 36587), (197, 36674),

Gene: ParvusTarda_93 Start: 64024, Stop: 64359, Start Num: 67

Candidate Starts for ParvusTarda_93:

(Start: 67 @64024 has 2 MA's), (70, 64033), (Start: 76 @64042 has 6 MA's), (Start: 80 @64051 has 32 MA's), (94, 64099), (179, 64252), (186, 64276), (200, 64345),

Gene: PauloDiaboli_215 Start: 113653, Stop: 113336, Start Num: 101

Candidate Starts for PauloDiaboli_215:

(Start: 101 @113653 has 4 MA's), (154, 113536), (167, 113497), (179, 113458), (192, 113401), (203, 113341),

Gene: Peas_65 Start: 41993, Stop: 42271, Start Num: 113

Candidate Starts for Peas_65:

(14, 41477), (52, 41768), (77, 41897), (Start: 113 @41993 has 6 MA's), (178, 42167), (179, 42170), (188, 42206), (195, 42260),

Gene: Pepe25_55 Start: 37387, Stop: 37064, Start Num: 80

Candidate Starts for Pepe25_55:

(69, 37417), (Start: 79 @37390 has 2 MA's), (Start: 80 @37387 has 32 MA's), (81, 37375), (90, 37351), (94, 37336), (Start: 113 @37300 has 6 MA's), (120, 37288), (134, 37258), (157, 37213), (179, 37174),

Gene: Perkunas_2 Start: 448, Stop: 780, Start Num: 82

Candidate Starts for Perkunas_2:

(Start: 82 @448 has 4 MA's), (Start: 111 @514 has 1 MA's), (179, 682), (186, 706),

Gene: Phabba_246 Start: 137077, Stop: 137433, Start Num: 80

Candidate Starts for Phabba_246:

(19, 136756), (39, 136897), (Start: 80 @137077 has 32 MA's), (94, 137128), (136, 137203), (154, 137236), (156, 137245), (179, 137287), (181, 137293), (184, 137302), (186, 137311),

Gene: Philus_98 Start: 54977, Stop: 55258, Start Num: 114

Candidate Starts for Philus_98:

(21, 54566), (23, 54587), (26, 54608), (28, 54638), (Start: 114 @54977 has 35 MA's), (131, 55022), (141, 55040), (179, 55157),

Gene: Phlop_78 Start: 52902, Stop: 53273, Start Num: 110

Candidate Starts for Phlop_78:

(58, 52719), (Start: 110 @52902 has 8 MA's), (179, 53079), (186, 53103),

Gene: Phloss_53 Start: 35604, Stop: 36092, Start Num: 47

Candidate Starts for Phloss_53:

(Start: 47 @35604 has 5 MA's), (56, 35640), (Start: 63 @35694 has 4 MA's), (126, 35847), (127, 35850), (143, 35877), (179, 35988), (181, 35994), (197, 36081),

Gene: PinkPlastic_9 Start: 6480, Stop: 6794, Start Num: 87

Candidate Starts for PinkPlastic_9:

(Start: 87 @6480 has 17 MA's), (Start: 101 @6519 has 4 MA's), (Start: 113 @6528 has 6 MA's), (146, 6597), (172, 6672), (188, 6732),

Gene: Pipp_48 Start: 34437, Stop: 34712, Start Num: 108

Candidate Starts for Pipp_48:

(Start: 108 @34437 has 1 MA's), (179, 34608), (186, 34632),

Gene: Pippy_94 Start: 52340, Stop: 52621, Start Num: 114

Candidate Starts for Pippy_94:

(21, 51929), (23, 51950), (26, 51971), (28, 52001), (Start: 114 @52340 has 35 MA's), (131, 52385), (141, 52403), (179, 52520),

Gene: Pipsqueaks_56 Start: 36265, Stop: 36663, Start Num: 63

Candidate Starts for Pipsqueaks_56:

(Start: 47 @36175 has 5 MA's), (56, 36211), (Start: 63 @36265 has 4 MA's), (126, 36418), (127, 36421), (143, 36448), (179, 36559), (181, 36565), (197, 36652),

Gene: Pointis_8 Start: 3460, Stop: 3867, Start Num: 76

Candidate Starts for Pointis_8:

(Start: 76 @3460 has 6 MA's), (91, 3511), (94, 3520), (130, 3607), (150, 3655), (170, 3721), (175, 3739), (181, 3757),

Gene: Portcullis_81 Start: 52908, Stop: 53279, Start Num: 110

Candidate Starts for Portcullis_81:

(58, 52725), (Start: 110 @52908 has 8 MA's), (179, 53085), (186, 53109),

Gene: Priscilla_97 Start: 54167, Stop: 54448, Start Num: 114

Candidate Starts for Priscilla_97:

(21, 53756), (23, 53777), (26, 53798), (28, 53828), (Start: 114 @54167 has 35 MA's), (131, 54212), (141, 54230), (179, 54347),

Gene: PullumCavea_79 Start: 53079, Stop: 53450, Start Num: 110

Candidate Starts for PullumCavea_79:

(58, 52896), (Start: 110 @53079 has 8 MA's), (179, 53256), (186, 53280),

Gene: Pumpernickel_196 Start: 112347, Stop: 112042, Start Num: 101

Candidate Starts for Pumpernickel_196:

(Start: 101 @112347 has 4 MA's), (104, 112341), (140, 112272), (180, 112170), (202, 112059),

Gene: Pureglobe5_10 Start: 3473, Stop: 3880, Start Num: 76

Candidate Starts for Pureglobe5_10:

(Start: 76 @3473 has 6 MA's), (91, 3524), (94, 3533), (130, 3620), (150, 3668), (170, 3734), (175, 3752), (181, 3770),

Gene: Qui_124 Start: 68080, Stop: 68388, Start Num: 118

Candidate Starts for Qui_124:

(Start: 118 @68080 has 2 MA's), (136, 68125), (151, 68164), (181, 68260),

Gene: Qui_133 Start: 71406, Stop: 71771, Start Num: 98

Candidate Starts for Qui_133:

(74, 71328), (Start: 98 @71406 has 2 MA's), (147, 71517), (171, 71592), (186, 71643),

Gene: Rajelicia_10 Start: 6620, Stop: 6934, Start Num: 87

Candidate Starts for Rajelicia_10:

(Start: 87 @6620 has 17 MA's), (Start: 101 @6659 has 4 MA's), (Start: 113 @6668 has 6 MA's), (146, 6737), (172, 6812), (188, 6872),

Gene: Ranunculus_6 Start: 3041, Stop: 3424, Start Num: 76

Candidate Starts for Ranunculus_6:

(Start: 76 @3041 has 6 MA's), (150, 3236), (171, 3305), (175, 3320), (180, 3335), (181, 3338),

Gene: RedBaron_55 Start: 37907, Stop: 37578, Start Num: 86

Candidate Starts for RedBaron_55:

(Start: 86 @37907 has 1 MA's), (Start: 101 @37868 has 4 MA's), (147, 37775), (171, 37706),

Gene: Rizwana_7 Start: 3422, Stop: 3844, Start Num: 80

Candidate Starts for Rizwana_7:

(61, 3356), (Start: 80 @3422 has 32 MA's), (90, 3458), (105, 3500), (130, 3560), (180, 3707), (181, 3710),

Gene: RobinRose_58 Start: 38338, Stop: 38039, Start Num: 79

Candidate Starts for RobinRose_58:

(69, 38365), (Start: 79 @38338 has 2 MA's), (Start: 80 @38335 has 32 MA's), (81, 38323), (90, 38299), (94, 38284), (120, 38236), (131, 38227), (156, 38191), (179, 38149), (185, 38128),

Gene: RogerDodger_84 Start: 53667, Stop: 54038, Start Num: 110

Candidate Starts for RogerDodger_84:

(58, 53484), (Start: 110 @53667 has 8 MA's), (179, 53844), (186, 53868),

Gene: Romm_58 Start: 38320, Stop: 38039, Start Num: 81

Candidate Starts for Romm_58:

(69, 38362), (Start: 79 @38335 has 2 MA's), (Start: 80 @38332 has 32 MA's), (81, 38320), (94, 38281), (97, 38278), (Start: 113 @38245 has 6 MA's), (120, 38233), (131, 38224), (179, 38146), (185, 38125), (188, 38110),

Gene: SJReid_73 Start: 30780, Stop: 31085, Start Num: 101

Candidate Starts for SJReid_73:

(Start: 101 @30780 has 4 MA's),

Gene: Saal_94 Start: 53731, Stop: 54012, Start Num: 114

Candidate Starts for Saal_94:

(21, 53320), (23, 53341), (26, 53362), (28, 53392), (Start: 114 @53731 has 35 MA's), (131, 53776), (141, 53794), (179, 53911),

Gene: SadLad_63 Start: 46437, Stop: 46174, Start Num: 119

Candidate Starts for SadLad_63:

(Start: 119 @46437 has 2 MA's), (128, 46410), (138, 46389), (179, 46278), (188, 46242), (197, 46185),

Gene: Salvador_80 Start: 53022, Stop: 53375, Start Num: 80

Candidate Starts for Salvador_80:

(Start: 80 @53022 has 32 MA's), (188, 53217),

Gene: Sandalphon_96 Start: 54715, Stop: 55005, Start Num: 109
Candidate Starts for Sandalphon_96:
(Start: 109 @54715 has 1 MA's), (131, 54769), (141, 54787), (179, 54904),

Gene: Schnauzer_56 Start: 36197, Stop: 36685, Start Num: 47
Candidate Starts for Schnauzer_56:
(Start: 47 @36197 has 5 MA's), (56, 36233), (Start: 63 @36287 has 4 MA's), (126, 36440), (127, 36443), (143, 36470), (179, 36581), (181, 36587), (197, 36674),

Gene: ScoobyDoobyDoo_233 Start: 134075, Stop: 134443, Start Num: 80
Candidate Starts for ScoobyDoobyDoo_233:
(Start: 80 @134075 has 32 MA's), (150, 134234), (181, 134303), (186, 134321), (196, 134387), (204, 134414),

Gene: Seabiscuit_12 Start: 6693, Stop: 7034, Start Num: 79
Candidate Starts for Seabiscuit_12:
(Start: 79 @6693 has 2 MA's), (Start: 87 @6720 has 17 MA's), (Start: 101 @6759 has 4 MA's), (Start: 113 @6768 has 6 MA's), (146, 6837), (172, 6912), (188, 6972),

Gene: Sephiroth_114 Start: 64560, Stop: 64826, Start Num: 115
Candidate Starts for Sephiroth_114:
(Start: 72 @64443 has 3 MA's), (Start: 115 @64560 has 4 MA's), (182, 64734), (195, 64815),

Gene: SeresaTree_71 Start: 55390, Stop: 55779, Start Num: 65
Candidate Starts for SeresaTree_71:
(Start: 65 @55390 has 7 MA's), (Start: 96 @55477 has 19 MA's), (100, 55486), (131, 55558), (135, 55564), (191, 55741), (193, 55750),

Gene: Sham_67 Start: 56064, Stop: 56453, Start Num: 65
Candidate Starts for Sham_67:
(Start: 65 @56064 has 7 MA's), (75, 56091), (135, 56238), (193, 56424),

Gene: ShiLan_99 Start: 55748, Stop: 56029, Start Num: 114
Candidate Starts for ShiLan_99:
(21, 55337), (23, 55358), (26, 55379), (28, 55409), (Start: 114 @55748 has 35 MA's), (131, 55793), (141, 55811), (179, 55928), (188, 55964),

Gene: Shinji_80 Start: 53025, Stop: 53456, Start Num: 80
Candidate Starts for Shinji_80:
(Start: 80 @53025 has 32 MA's), (94, 53073), (155, 53208), (165, 53235), (166, 53238), (186, 53286),

Gene: Shocker_3 Start: 902, Stop: 1168, Start Num: 116
Candidate Starts for Shocker_3:
(Start: 116 @902 has 1 MA's), (138, 956), (179, 1067),

Gene: ShowerHandel_97 Start: 53013, Stop: 53294, Start Num: 114
Candidate Starts for ShowerHandel_97:
(21, 52602), (23, 52623), (26, 52644), (28, 52674), (Start: 114 @53013 has 35 MA's), (131, 53058), (141, 53076), (179, 53193),

Gene: SilentRX_7 Start: 2575, Stop: 2988, Start Num: 80
Candidate Starts for SilentRX_7:
(Start: 80 @2575 has 32 MA's), (Start: 111 @2665 has 1 MA's), (151, 2764), (156, 2782), (187, 2878),

Gene: Slagathor_11 Start: 6591, Stop: 6905, Start Num: 87

Candidate Starts for Slagathor_11:

(Start: 87 @6591 has 17 MA's), (Start: 101 @6630 has 4 MA's), (Start: 113 @6639 has 6 MA's), (146, 6708), (172, 6783), (188, 6843),

Gene: SmokingBunny_81 Start: 54018, Stop: 54371, Start Num: 80

Candidate Starts for SmokingBunny_81:

(Start: 80 @54018 has 32 MA's), (188, 54213),

Gene: Smurph_55 Start: 36197, Stop: 36685, Start Num: 47

Candidate Starts for Smurph_55:

(Start: 47 @36197 has 5 MA's), (56, 36233), (Start: 63 @36287 has 4 MA's), (126, 36440), (127, 36443), (143, 36470), (179, 36581), (181, 36587), (197, 36674),

Gene: SoilAssassin_55 Start: 39034, Stop: 39414, Start Num: 72

Candidate Starts for SoilAssassin_55:

(Start: 72 @39034 has 3 MA's), (91, 39088), (151, 39217), (163, 39253), (171, 39280), (172, 39283), (181, 39313), (186, 39331), (188, 39343), (197, 39400),

Gene: SpeedDemon_540 Start: 45518, Stop: 45787, Start Num: 112

Candidate Starts for SpeedDemon_540:

(Start: 112 @45518 has 2 MA's), (131, 45566), (172, 45662), (179, 45686),

Gene: Spoonbill_96 Start: 51661, Stop: 51942, Start Num: 114

Candidate Starts for Spoonbill_96:

(21, 51250), (23, 51271), (26, 51292), (28, 51322), (Start: 114 @51661 has 35 MA's), (131, 51706), (141, 51724), (179, 51841),

Gene: Squee_11 Start: 7115, Stop: 7429, Start Num: 87

Candidate Starts for Squee_11:

(Start: 87 @7115 has 17 MA's), (Start: 101 @7154 has 4 MA's), (146, 7232), (163, 7277),

Gene: Squiddly_103 Start: 56800, Stop: 57090, Start Num: 80

Candidate Starts for Squiddly_103:

(42, 56620), (43, 56623), (58, 56704), (68, 56770), (Start: 80 @56800 has 32 MA's), (135, 56917), (173, 56971), (188, 57028),

Gene: StAugustine_153 Start: 85407, Stop: 85078, Start Num: 79

Candidate Starts for StAugustine_153:

(Start: 79 @85407 has 2 MA's), (95, 85350), (153, 85212), (164, 85188), (177, 85140),

Gene: Sunfish_12 Start: 3876, Stop: 4208, Start Num: 87

Candidate Starts for Sunfish_12:

(40, 3663), (Start: 87 @3876 has 17 MA's), (106, 3927), (123, 3951), (145, 4002), (171, 4071), (188, 4134),

Gene: SwagPigglett_98 Start: 54867, Stop: 55148, Start Num: 114

Candidate Starts for SwagPigglett_98:

(21, 54456), (23, 54477), (26, 54498), (28, 54528), (Start: 114 @54867 has 35 MA's), (131, 54912), (141, 54930), (179, 55047),

Gene: Switzer_11 Start: 6599, Stop: 6913, Start Num: 87

Candidate Starts for Switzer_11:

(Start: 79 @6572 has 2 MA's), (Start: 87 @6599 has 17 MA's), (Start: 101 @6638 has 4 MA's), (Start: 113 @6647 has 6 MA's), (146, 6716), (172, 6791), (188, 6851),

Gene: Syleon_119 Start: 65342, Stop: 65608, Start Num: 115

Candidate Starts for Syleon_119:

(Start: 72 @65225 has 3 MA's), (Start: 115 @65342 has 4 MA's), (182, 65516), (195, 65597),

Gene: Tempo_56 Start: 38215, Stop: 37919, Start Num: 80

Candidate Starts for Tempo_56:

(69, 38245), (Start: 79 @38218 has 2 MA's), (Start: 80 @38215 has 32 MA's), (81, 38203), (90, 38179), (94, 38164), (120, 38116), (131, 38107), (156, 38071), (179, 38029), (185, 38008),

Gene: Togo_80 Start: 54018, Stop: 54371, Start Num: 80

Candidate Starts for Togo_80:

(Start: 80 @54018 has 32 MA's), (188, 54213),

Gene: Tortellini_63 Start: 43457, Stop: 43750, Start Num: 107

Candidate Starts for Tortellini_63:

(32, 43202), (38, 43223), (53, 43301), (64, 43364), (Start: 80 @43400 has 32 MA's), (Start: 107 @43457 has 1 MA's), (131, 43511), (168, 43607), (179, 43646), (186, 43670), (197, 43739),

Gene: Tribby_76 Start: 45227, Stop: 45535, Start Num: 96

Candidate Starts for Tribby_76:

(Start: 96 @45227 has 19 MA's), (143, 45329), (160, 45365), (178, 45428), (187, 45458),

Gene: TunaTartare_69 Start: 56371, Stop: 56772, Start Num: 65

Candidate Starts for TunaTartare_69:

(Start: 65 @56371 has 7 MA's), (105, 56482), (120, 56509), (123, 56515), (131, 56545), (174, 56665), (187, 56704),

Gene: Twister6_81 Start: 52367, Stop: 52720, Start Num: 80

Candidate Starts for Twister6_81:

(Start: 80 @52367 has 32 MA's), (188, 52562),

Gene: U2_10 Start: 6601, Stop: 6915, Start Num: 87

Candidate Starts for U2_10:

(Start: 79 @6574 has 2 MA's), (Start: 87 @6601 has 17 MA's), (Start: 101 @6640 has 4 MA's), (Start: 113 @6649 has 6 MA's), (146, 6718), (172, 6793), (188, 6853),

Gene: Untouchable_2 Start: 479, Stop: 808, Start Num: 82

Candidate Starts for Untouchable_2:

(Start: 82 @479 has 4 MA's), (Start: 111 @545 has 1 MA's), (171, 686), (179, 713), (183, 725),

Gene: Valary_81 Start: 53764, Stop: 54165, Start Num: 80

Candidate Starts for Valary_81:

(Start: 80 @53764 has 32 MA's), (94, 53812), (179, 53971), (186, 53995), (188, 54007),

Gene: Vordorf_53 Start: 39065, Stop: 39475, Start Num: 62

Candidate Starts for Vordorf_53:

(12, 38624), (20, 38795), (41, 38936), (55, 39017), (58, 39023), (62, 39065), (83, 39131), (126, 39221), (140, 39242), (154, 39278),

Gene: Whouxphf_100 Start: 54173, Stop: 54454, Start Num: 114
Candidate Starts for Whouxphf_100:
(21, 53762), (23, 53783), (26, 53804), (28, 53834), (Start: 114 @54173 has 35 MA's), (131, 54218),
(141, 54236), (179, 54353),

Gene: Wizard_77 Start: 52852, Stop: 53223, Start Num: 110
Candidate Starts for Wizard_77:
(58, 52669), (Start: 110 @52852 has 8 MA's), (179, 53029), (186, 53053),

Gene: Wojtek_85 Start: 64679, Stop: 65014, Start Num: 67
Candidate Starts for Wojtek_85:
(Start: 67 @64679 has 2 MA's), (70, 64688), (Start: 76 @64697 has 6 MA's), (Start: 80 @64706 has
32 MA's), (94, 64754), (179, 64907), (186, 64931), (200, 65000),

Gene: Xenomorph_69 Start: 44753, Stop: 45061, Start Num: 96
Candidate Starts for Xenomorph_69:
(Start: 96 @44753 has 19 MA's), (143, 44855), (160, 44891), (178, 44954), (187, 44984),

Gene: Xerxes_55 Start: 36284, Stop: 36682, Start Num: 63
Candidate Starts for Xerxes_55:
(Start: 47 @36194 has 5 MA's), (56, 36230), (Start: 63 @36284 has 4 MA's), (126, 36437), (127,
36440), (143, 36467), (179, 36578), (181, 36584), (197, 36671),

Gene: Yorick_92 Start: 54408, Stop: 54689, Start Num: 114
Candidate Starts for Yorick_92:
(21, 53997), (23, 54018), (26, 54039), (28, 54069), (Start: 114 @54408 has 35 MA's), (131, 54453),
(141, 54471), (179, 54588),

Gene: YungMoney_79 Start: 54400, Stop: 54783, Start Num: 80
Candidate Starts for YungMoney_79:
(Start: 80 @54400 has 32 MA's), (121, 54496), (183, 54604), (198, 54682),

Gene: Yvonnetastic_136 Start: 75890, Stop: 76258, Start Num: 84
Candidate Starts for Yvonnetastic_136:
(Start: 84 @75890 has 2 MA's), (92, 75920), (Start: 101 @75935 has 4 MA's), (104, 75941), (117,
75965), (137, 76016), (178, 76136), (179, 76139), (186, 76163), (201, 76244),

Gene: Zizzle_99 Start: 55058, Stop: 55339, Start Num: 114
Candidate Starts for Zizzle_99:
(21, 54647), (23, 54668), (26, 54689), (28, 54719), (Start: 114 @55058 has 35 MA's), (131, 55103),
(141, 55121), (179, 55238), (188, 55274),