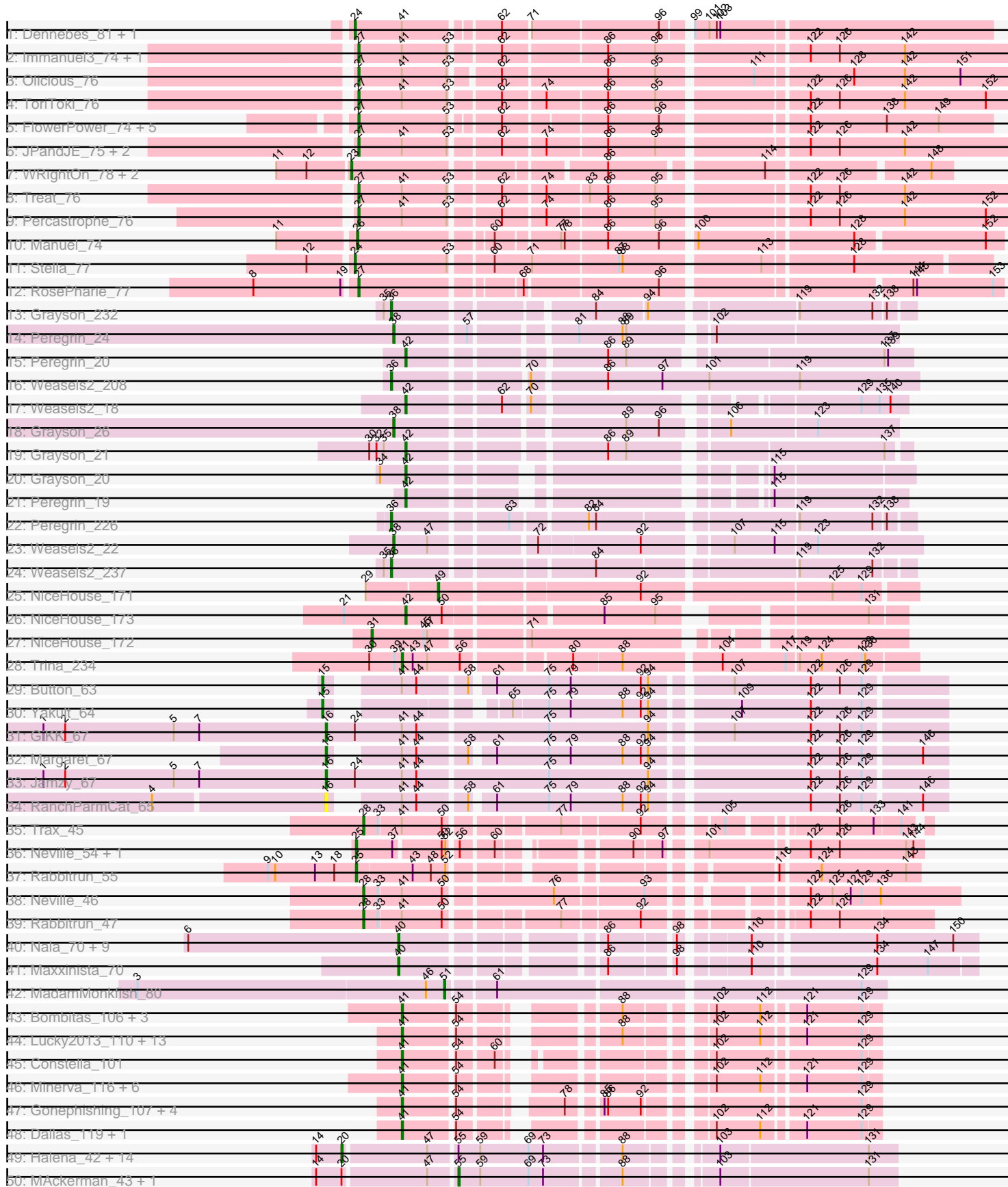
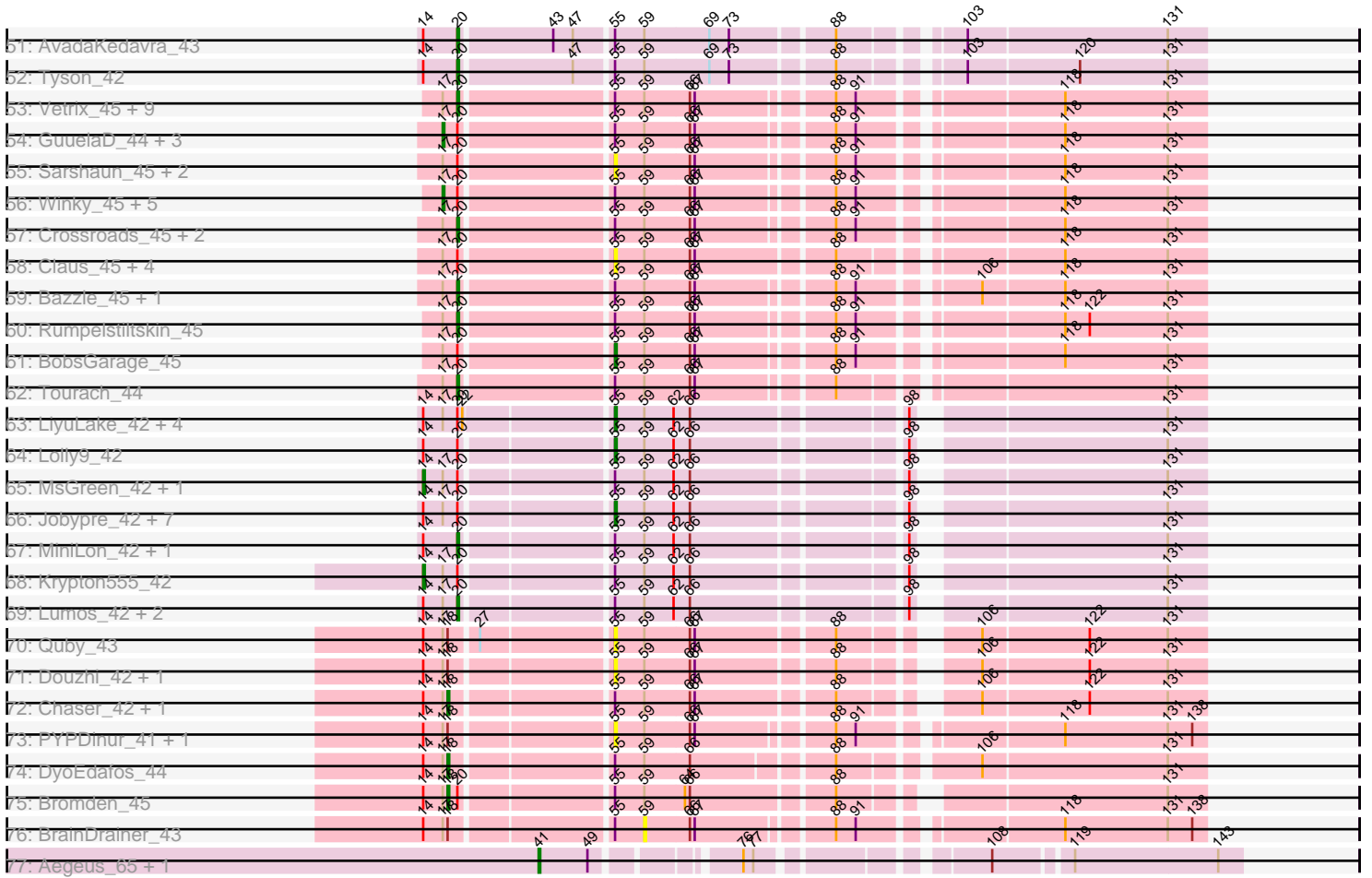


Pham 196315



Pham 196315



Note: Tracks are now grouped by subcluster and scaled. Switching in subcluster is indicated by changes in track color. Track scale is now set by default to display the region 30 bp upstream of start 1 to 30 bp downstream of the last possible start. If this default region is judged to be packed too tightly with annotated starts, the track will be further scaled to only show that region of the ORF with annotated starts. This action will be indicated by adding "Zoomed" to the title. For starts, yellow indicates the location of called starts comprised solely of Glimmer/GeneMark auto-annotations, green indicates the location of called starts with at least 1 manual gene annotation.

Pham 196315 Report

This analysis was run 12/09/24 on database version 580.

Pham number 196315 has 185 members, 26 are drafts.

Phages represented in each track:

- Track 1 : Dennebes_81, Rideau_80
- Track 2 : Immanuel3_74, Romero_76
- Track 3 : Olicious_76
- Track 4 : ToriToki_76
- Track 5 : FlowerPower_74, Geostin_69, RetrieverFever_74, Fabian_73, Gremlin23_74, Vorvolakos_75
- Track 6 : JPandJE_75, ZooBear_76, HaugeAnator_76
- Track 7 : WRightOn_78, Zeigle_74, Kumquat_74
- Track 8 : Treat_76
- Track 9 : Percastrophe_76
- Track 10 : Manuel_74
- Track 11 : Stella_77
- Track 12 : RosePharie_77
- Track 13 : Grayson_232
- Track 14 : Peregrin_24
- Track 15 : Peregrin_20
- Track 16 : Weasels2_208
- Track 17 : Weasels2_18
- Track 18 : Grayson_26
- Track 19 : Grayson_21
- Track 20 : Grayson_20
- Track 21 : Peregrin_19
- Track 22 : Peregrin_226
- Track 23 : Weasels2_22
- Track 24 : Weasels2_237
- Track 25 : NiceHouse_171
- Track 26 : NiceHouse_173
- Track 27 : NiceHouse_172
- Track 28 : Trina_234
- Track 29 : Button_63
- Track 30 : Yakult_64
- Track 31 : GiKK_67
- Track 32 : Margaret_67
- Track 33 : Jamzy_67
- Track 34 : RanchParmCat_65
- Track 35 : Trax_45
- Track 36 : Neville_54, Trax_53

- Track 37 : Rabbitrun_55
- Track 38 : Neville_46
- Track 39 : Rabbitrun_47
- Track 40 : Nala_70, MPhalcon_69, Terminus_71, Misfit_69, Bruin_65, Nimrod_69, Contagion_64, FireRed_72, Mosby_64, MISSy_69
- Track 41 : Maxxinista_70
- Track 42 : MadamMonkfish_80
- Track 43 : Bombitas_106, Yeet_109, Schatzie_113, Odette_120
- Track 44 : Lucky2013_110, HokkenD_108, Courthouse_108, NihilNomen_120, Ariel_113, Phoebus_119, Redno2_112, Beem_120, JuicyJay_115, Porcelain_113, Squint_111, Superphikiman_110, Dove_104, MiaZeal_113
- Track 45 : Constella_101
- Track 46 : Minerva_116, DmpstrDiver_119, Hughesyang_118, Pound_108, Bagrid_119, Ejimix_113, Halley_121
- Track 47 : Gonephishing_107, Hannaconda_104, KashFlow_110, Omega_124, LittleE_118
- Track 48 : Dallas_119, Thibault_99
- Track 49 : Halena_42, DirkDirk_42, Wamburgrxpress_43, JoeDirt_42, Acquire49_43, OhShagHennessy_42, Appletree2_42, Calm_43, Wyatt2_43, Enceladus_42, Rose5_42, Silverleaf_42, LeBron_43, Zaria_43, UPIE_43
- Track 50 : MAckerman_43, CicholasNage_43
- Track 51 : AvadaKedavra_43
- Track 52 : Tyson_42
- Track 53 : Vatrix_45, Lewan_45, Kahlid_45, DrSeegs_45, Gabriela_45, Netyap_45, Wilder_45, MkaliMitinis3_45, BigCheese_45, LilDestine_45
- Track 54 : GuuelaD_44, Nicholasp3_45, Loadrie_44, Wigglewiggles_45
- Track 55 : Sarshaun_45, Hafay_45, Soap141_45
- Track 56 : Winky_45, Breezona_45, Miley16_45, Itos_44, Finemlucis_45, Faith1_45
- Track 57 : Crossroads_45, Gardann_45, Zakai_45
- Track 58 : Claus_45, DHan_46, ZhongYanYuan_43, Baoshan_43, DanBing_44
- Track 59 : Bazzle_45, Archie_45
- Track 60 : Rumpelstiltskin_45
- Track 61 : BobsGarage_45
- Track 62 : Tourach_44
- Track 63 : LiyuLake_42, Ellson_42, BourbonZero_41, KirDoubleO7_40, DuncansLeg_42
- Track 64 : Lolly9_42
- Track 65 : MsGreen_42, Clautastrophe_42
- Track 66 : Jobypre_42, Samty_42, Kingsolomon_42, Bellis_42, Snenia_42, Finny_42, Nicholas_42, Moostard_42
- Track 67 : MiniLon_42, MiniMac_42
- Track 68 : Krypton555_42
- Track 69 : Lumos_42, Whirlwind_43, Jubie_42
- Track 70 : Quby_43
- Track 71 : Douzhi_42, FarmResident_43
- Track 72 : Chaser_42, Douge_42
- Track 73 : PYPDinur_41, Sheng711_43
- Track 74 : DyoEdafos_44
- Track 75 : Bromden_45
- Track 76 : BrainDrainer_43
- Track 77 : Aegeus_65, Baudelaire_65

Summary of Final Annotations (See graph section above for start numbers):

The start number called the most often in the published annotations is 20, it was called in 39 of the 159 non-draft genes in the pham.

Genes that call this "Most Annotated" start:

- Acquire49_43, Appletree2_42, Archie_45, AvadaKedavra_43, Bazzle_45, BigCheese_45, Calm_43, Crossroads_45, DirkDirk_42, DrSeegs_45, Enceladus_42, Gabriela_45, Gardann_45, Halena_42, JoeDirt_42, Jubie_42, Kahlid_45, LeBron_43, Lewan_45, LilDestine_45, Lumos_42, MiniLon_42, MiniMac_42, MkaliMitinis3_45, Netyap_45, OhShagHennessy_42, Rose5_42, Rumpelstiltskin_45, Silverleaf_42, Tourach_44, Tyson_42, UPIE_43, Vetrix_45, Wamburgxpress_43, Whirlwind_43, Wilder_45, Wyatt2_43, Zakai_45, Zaria_43,

Genes that have the "Most Annotated" start but do not call it:

- Baoshan_43, Bellis_42, BobsGarage_45, BourbonZero_41, Breezona_45, Bromden_45, CicholasNage_43, Claus_45, Clautastrophe_42, DHan_46, DanBing_44, DuncansLeg_42, Ellson_42, Faith1_45, Finemlucis_45, Finnry_42, GuuelaD_44, Hafay_45, Itos_44, Jobypre_42, Kingsolomon_42, KirDoubleO7_40, Krypton555_42, LiyuLake_42, Loadrie_44, Lolly9_42, MAckerman_43, Miley16_45, Moostard_42, MsGreen_42, Nicholas_42, Nicholasp3_45, Samty_42, Sarshaun_45, Snenia_42, Soap141_45, Wigglewiggles_45, Winky_45, ZhongYanYuan_43,

Genes that do not have the "Most Annotated" start:

- Aegeus_65, Ariel_113, Bagrid_119, Baudelaire_65, Beem_120, Bombitas_106, BrainDrainer_43, Bruin_65, Button_63, Chaser_42, Constella_101, Contagion_64, Courthouse_108, Dallas_119, Dennebes_81, DmpstrDiver_119, Douge_42, Douzhi_42, Dove_104, DyoEdafos_44, Ejimix_113, Fabian_73, FarmResident_43, FireRed_72, FlowerPower_74, Geostin_69, GiKK_67, Gonephishing_107, Grayson_20, Grayson_21, Grayson_232, Grayson_26, Gremlin23_74, Halley_121, Hannaconda_104, HaugeAnator_76, HokkenD_108, Hughesyang_118, Immanuel3_74, JPandJE_75, Jamzy_67, JuicyJay_115, KashFlow_110, Kumquat_74, LittleE_118, Lucky2013_110, MISSy_69, MPhalcon_69, MadamMonkfish_80, Manuel_74, Margaret_67, Maxxinista_70, MiaZeal_113, Minerva_116, Misfit_69, Mosby_64, Nala_70, Neville_46, Neville_54, NiceHouse_171, NiceHouse_172, NiceHouse_173, NihilNomen_120, Nimrod_69, Odette_120, Olicious_76, Omega_124, PYPDinur_41, Percastrophe_76, Peregrin_19, Peregrin_20, Peregrin_226, Peregrin_24, Phoebus_119, Porcelain_113, Pound_108, Quby_43, Rabbitrun_47, Rabbitrun_55, RanchParmCat_65, Redno2_112, RetrieverFever_74, Rideau_80, Romero_76, RosePharie_77, Schatzie_113, Sheng711_43, Squint_111, Stella_77, Superphikiman_110, Terminus_71, Thibault_99, ToriToki_76, Trax_45, Trax_53, Treat_76, Trina_234, Vorvolakos_75, WRightOn_78, Weasels2_18, Weasels2_208, Weasels2_22, Weasels2_237, Yakult_64, Yeet_109, Zeigle_74, ZooBear_76,

Summary by start number:

Start 14:

- Found in 51 of 185 (27.6%) of genes in pham
- Manual Annotations of this start: 3 of 159
- Called 5.9% of time when present

- Phage (with cluster) where this start called: Clautastrophe_42 (L3), Krypton555_42 (L3), MsGreen_42 (L3),

Start 15:

- Found in 2 of 185 (1.1%) of genes in pham
- Manual Annotations of this start: 2 of 159
- Called 100.0% of time when present
- Phage (with cluster) where this start called: Button_63 (CT), Yakult_64 (CT),

Start 16:

- Found in 4 of 185 (2.2%) of genes in pham
- Manual Annotations of this start: 3 of 159
- Called 100.0% of time when present
- Phage (with cluster) where this start called: GiKK_67 (CT), Jamzy_67 (CT), Margaret_67 (CT), RanchParmCat_65 (CT),

Start 17:

- Found in 65 of 185 (35.1%) of genes in pham
- Manual Annotations of this start: 10 of 159
- Called 15.4% of time when present
- Phage (with cluster) where this start called: Breezona_45 (L2), Faith1_45 (L2), Finemlucis_45 (L2), GuuelaD_44 (L2), Itos_44 (L2), Loadrie_44 (L2), Miley16_45 (L2), Nicholasp3_45 (L2), Wigglewiggles_45 (L2), Winky_45 (L2),

Start 18:

- Found in 11 of 185 (5.9%) of genes in pham
- Manual Annotations of this start: 4 of 159
- Called 36.4% of time when present
- Phage (with cluster) where this start called: Bromden_45 (L4), Chaser_42 (L4), Douge_42 (L4), DyoEdafos_44 (L4),

Start 20:

- Found in 78 of 185 (42.2%) of genes in pham
- Manual Annotations of this start: 39 of 159
- Called 50.0% of time when present
- Phage (with cluster) where this start called: Acquire49_43 (L1), Appletree2_42 (L1), Archie_45 (L2), AvadaKedavra_43 (L1), Bazzle_45 (L2), BigCheese_45 (L2), Calm_43 (L1), Crossroads_45 (L2), DirkDirk_42 (L1), DrSeegs_45 (L2), Enceladus_42 (L1), Gabriela_45 (L2), Gardann_45 (L2), Halena_42 (L1), JoeDirt_42 (L1), Jubie_42 (L3), Kahlid_45 (L2), LeBron_43 (L1), Lewan_45 (L2), LilDestine_45 (L2), Lumos_42 (L3), MiniLon_42 (L3), MiniMac_42 (L3), MkaliMitinis3_45 (L2), Netyap_45 (L2), OhShagHennessy_42 (L1), Rose5_42 (L1), Rumpelstiltskin_45 (L2), Silverleaf_42 (L1), Tourach_44 (L2), Tyson_42 (L1), UPIE_43 (L1), Vetrix_45 (L2), Wamburgrxpress_43 (L1), Whirlwind_43 (L3), Wilder_45 (L2), Wyatt2_43 (L1), Zakai_45 (L2), Zaria_43 (L1),

Start 23:

- Found in 3 of 185 (1.6%) of genes in pham
- Manual Annotations of this start: 3 of 159
- Called 100.0% of time when present
- Phage (with cluster) where this start called: Kumquat_74 (BF), WRightOn_78 (BF), Zeigle_74 (BF),

Start 24:

- Found in 5 of 185 (2.7%) of genes in pham
- Manual Annotations of this start: 2 of 159
- Called 60.0% of time when present
- Phage (with cluster) where this start called: Dennebes_81 (BF), Rideau_80 (BF), Stella_77 (BF),

Start 25:

- Found in 3 of 185 (1.6%) of genes in pham
- Manual Annotations of this start: 3 of 159
- Called 100.0% of time when present
- Phage (with cluster) where this start called: Neville_54 (DU2), Rabbitrun_55 (DU2), Trax_53 (DU2),

Start 26:

- Found in 1 of 185 (0.5%) of genes in pham
- Manual Annotations of this start: 1 of 159
- Called 100.0% of time when present
- Phage (with cluster) where this start called: Manuel_74 (BF),

Start 27:

- Found in 17 of 185 (9.2%) of genes in pham
- Manual Annotations of this start: 15 of 159
- Called 94.1% of time when present
- Phage (with cluster) where this start called: Fabian_73 (BF), FlowerPower_74 (BF), Geostin_69 (BF), Gremlin23_74 (BF), HaugeAnator_76 (BF), Immanuel3_74 (BF), JPandJE_75 (BF), Olicious_76 (BF), Percastrophe_76 (BF), RetrieverFever_74 (BF), Romero_76 (BF), RosePharie_77 (BF), ToriToki_76 (BF), Treat_76 (BF), Vorvolakos_75 (BF), ZooBear_76 (BF),

Start 28:

- Found in 3 of 185 (1.6%) of genes in pham
- Manual Annotations of this start: 3 of 159
- Called 100.0% of time when present
- Phage (with cluster) where this start called: Neville_46 (DU2), Rabbitrun_47 (DU2), Trax_45 (DU2),

Start 31:

- Found in 1 of 185 (0.5%) of genes in pham
- Manual Annotations of this start: 1 of 159
- Called 100.0% of time when present
- Phage (with cluster) where this start called: NiceHouse_172 (CE),

Start 36:

- Found in 4 of 185 (2.2%) of genes in pham
- Manual Annotations of this start: 4 of 159
- Called 100.0% of time when present
- Phage (with cluster) where this start called: Grayson_232 (CB), Peregrin_226 (CB), Weasels2_208 (CB), Weasels2_237 (CB),

Start 38:

- Found in 3 of 185 (1.6%) of genes in pham
- Manual Annotations of this start: 3 of 159

- Called 100.0% of time when present
- Phage (with cluster) where this start called: Grayson_26 (CB), Peregrin_24 (CB), Weasels2_22 (CB),

Start 40:

- Found in 11 of 185 (5.9%) of genes in pham
- Manual Annotations of this start: 11 of 159
- Called 100.0% of time when present
- Phage (with cluster) where this start called: Bruin_65 (E), Contagion_64 (E), FireRed_72 (E), MISSy_69 (E), MPhalcon_69 (E), Maxxinista_70 (E), Misfit_69 (E), Mosby_64 (E), Nala_70 (E), Nimrod_69 (E), Terminus_71 (E),

Start 41:

- Found in 55 of 185 (29.7%) of genes in pham
- Manual Annotations of this start: 33 of 159
- Called 65.5% of time when present
- Phage (with cluster) where this start called: Aegeus_65 (L5), Ariel_113 (J), Bagrid_119 (J), Baudelaire_65 (L5), Beem_120 (J), Bombitas_106 (J), Constella_101 (J), Courthouse_108 (J), Dallas_119 (J), DmpstrDiver_119 (J), Dove_104 (J), Ejimix_113 (J), Gonephishing_107 (J), Halley_121 (J), Hannaconda_104 (J), HokkenD_108 (J), Hughesyang_118 (J), JuicyJay_115 (J), KashFlow_110 (J), LittleE_118 (J), Lucky2013_110 (J), MiaZeal_113 (J), Minerva_116 (J), NihilNomen_120 (J), Odette_120 (J), Omega_124 (J), Phoebus_119 (J), Porcelain_113 (J), Pound_108 (J), Redno2_112 (J), Schatzie_113 (J), Squint_111 (J), Superphikiman_110 (J), Thibault_99 (J), Trina_234 (CE), Yeet_109 (J),

Start 42:

- Found in 6 of 185 (3.2%) of genes in pham
- Manual Annotations of this start: 6 of 159
- Called 100.0% of time when present
- Phage (with cluster) where this start called: Grayson_20 (CB), Grayson_21 (CB), NiceHouse_173 (CE), Peregrin_19 (CB), Peregrin_20 (CB), Weasels2_18 (CB),

Start 49:

- Found in 3 of 185 (1.6%) of genes in pham
- Manual Annotations of this start: 1 of 159
- Called 33.3% of time when present
- Phage (with cluster) where this start called: NiceHouse_171 (CE),

Start 51:

- Found in 1 of 185 (0.5%) of genes in pham
- Manual Annotations of this start: 1 of 159
- Called 100.0% of time when present
- Phage (with cluster) where this start called: MadamMonkfish_80 (E),

Start 55:

- Found in 87 of 185 (47.0%) of genes in pham
- Manual Annotations of this start: 11 of 159
- Called 34.5% of time when present
- Phage (with cluster) where this start called: Baoshan_43 (L2), Bellis_42 (L3), BobsGarage_45 (L2), BourbonZero_41 (L3), CicholasNage_43 (L1), Claus_45 (L2), DHan_46 (L2), DanBing_44 (L2), Douzhi_42 (L4), DuncansLeg_42 (L3), Ellson_42 (L3), FarmResident_43 (L4), Finnry_42 (L3), Hafay_45 (L2), Jobypre_42 (L3),

Kingsolomon_42 (L3), KirDoubleO7_40 (L3), LiyuLake_42 (L3), Lolly9_42 (L3), MAckerman_43 (L1), Moostard_42 (L3), Nicholas_42 (L3), PYPDinur_41 (L4), Quby_43 (L4), Samty_42 (L3), Sarshaun_45 (L2), Sheng711_43 (L4), Snenia_42 (L3), Soap141_45 (L2), ZhongYanYuan_43 (L2),

Start 59:

- Found in 87 of 185 (47.0%) of genes in pham
- No Manual Annotations of this start.
- Called 1.1% of time when present
- Phage (with cluster) where this start called: BrainDrainer_43 (L4),

Summary by clusters:

There are 12 clusters represented in this pham: BF, E, CB, J, CE, L4, L5, L2, L3, L1, DU2, CT,

Info for manual annotations of cluster BF:

- Start number 23 was manually annotated 3 times for cluster BF.
- Start number 24 was manually annotated 2 times for cluster BF.
- Start number 26 was manually annotated 1 time for cluster BF.
- Start number 27 was manually annotated 15 times for cluster BF.

Info for manual annotations of cluster CB:

- Start number 36 was manually annotated 4 times for cluster CB.
- Start number 38 was manually annotated 3 times for cluster CB.
- Start number 42 was manually annotated 5 times for cluster CB.

Info for manual annotations of cluster CE:

- Start number 31 was manually annotated 1 time for cluster CE.
- Start number 41 was manually annotated 1 time for cluster CE.
- Start number 42 was manually annotated 1 time for cluster CE.
- Start number 49 was manually annotated 1 time for cluster CE.

Info for manual annotations of cluster CT:

- Start number 15 was manually annotated 2 times for cluster CT.
- Start number 16 was manually annotated 3 times for cluster CT.

Info for manual annotations of cluster DU2:

- Start number 25 was manually annotated 3 times for cluster DU2.
- Start number 28 was manually annotated 3 times for cluster DU2.

Info for manual annotations of cluster E:

- Start number 40 was manually annotated 11 times for cluster E.
- Start number 51 was manually annotated 1 time for cluster E.

Info for manual annotations of cluster J:

- Start number 41 was manually annotated 30 times for cluster J.

Info for manual annotations of cluster L1:

- Start number 20 was manually annotated 17 times for cluster L1.
- Start number 55 was manually annotated 2 times for cluster L1.

Info for manual annotations of cluster L2:

- Start number 17 was manually annotated 10 times for cluster L2.
- Start number 20 was manually annotated 17 times for cluster L2.
- Start number 55 was manually annotated 1 time for cluster L2.

Info for manual annotations of cluster L3:

- Start number 14 was manually annotated 3 times for cluster L3.
- Start number 20 was manually annotated 5 times for cluster L3.
- Start number 55 was manually annotated 8 times for cluster L3.

Info for manual annotations of cluster L4:

- Start number 18 was manually annotated 4 times for cluster L4.

Info for manual annotations of cluster L5:

- Start number 41 was manually annotated 2 times for cluster L5.

Gene Information:

Gene: Acquire49_43 Start: 34025, Stop: 34441, Start Num: 20

Candidate Starts for Acquire49_43:

(Start: 14 @34004 has 3 MA's), (Start: 20 @34025 has 39 MA's), (47, 34091), (Start: 55 @34112 has 11 MA's), (59, 34130), (69, 34169), (73, 34181), (88, 34238), (103, 34298), (131, 34418),

Gene: Aegeus_65 Start: 44400, Stop: 44765, Start Num: 41

Candidate Starts for Aegeus_65:

(Start: 41 @44400 has 33 MA's), (Start: 49 @44430 has 1 MA's), (76, 44502), (77, 44508), (108, 44622), (119, 44664), (143, 44751),

Gene: Appletree2_42 Start: 33952, Stop: 34368, Start Num: 20

Candidate Starts for Appletree2_42:

(Start: 14 @33931 has 3 MA's), (Start: 20 @33952 has 39 MA's), (47, 34018), (Start: 55 @34039 has 11 MA's), (59, 34057), (69, 34096), (73, 34108), (88, 34165), (103, 34225), (131, 34345),

Gene: Archie_45 Start: 35560, Stop: 35976, Start Num: 20

Candidate Starts for Archie_45:

(Start: 17 @35551 has 10 MA's), (Start: 20 @35560 has 39 MA's), (Start: 55 @35647 has 11 MA's), (59, 35665), (66, 35692), (67, 35695), (88, 35770), (91, 35782), (106, 35842), (118, 35890), (131, 35953),

Gene: Ariel_113 Start: 61833, Stop: 62153, Start Num: 41

Candidate Starts for Ariel_113:

(Start: 41 @61833 has 33 MA's), (54, 61872), (88, 61971), (102, 62028), (112, 62064), (121, 62094), (129, 62139),

Gene: AvadaKedavra_43 Start: 34034, Stop: 34450, Start Num: 20

Candidate Starts for AvadaKedavra_43:

(Start: 14 @34013 has 3 MA's), (Start: 20 @34034 has 39 MA's), (43, 34088), (47, 34100), (Start: 55 @34121 has 11 MA's), (59, 34139), (69, 34178), (73, 34190), (88, 34247), (103, 34307), (131, 34427),

Gene: Bagrid_119 Start: 66108, Stop: 66428, Start Num: 41

Candidate Starts for Bagrid_119:

(Start: 41 @66108 has 33 MA's), (54, 66147), (102, 66303), (112, 66339), (121, 66369), (129, 66414),

Gene: Baoshan_43 Start: 35304, Stop: 35633, Start Num: 55

Candidate Starts for Baoshan_43:

(Start: 17 @35208 has 10 MA's), (Start: 20 @35217 has 39 MA's), (Start: 55 @35304 has 11 MA's), (59, 35322), (66, 35349), (67, 35352), (88, 35430), (118, 35547), (131, 35610),

Gene: Baudelaire_65 Start: 44400, Stop: 44765, Start Num: 41

Candidate Starts for Baudelaire_65:

(Start: 41 @44400 has 33 MA's), (Start: 49 @44430 has 1 MA's), (76, 44502), (77, 44508), (108, 44622), (119, 44664), (143, 44751),

Gene: Bazzle_45 Start: 35592, Stop: 36008, Start Num: 20

Candidate Starts for Bazzle_45:

(Start: 17 @35583 has 10 MA's), (Start: 20 @35592 has 39 MA's), (Start: 55 @35679 has 11 MA's), (59, 35697), (66, 35724), (67, 35727), (88, 35802), (91, 35814), (106, 35874), (118, 35922), (131, 35985),

Gene: Beem_120 Start: 67476, Stop: 67796, Start Num: 41

Candidate Starts for Beem_120:

(Start: 41 @67476 has 33 MA's), (54, 67515), (88, 67614), (102, 67671), (112, 67707), (121, 67737), (129, 67782),

Gene: Bellis_42 Start: 35732, Stop: 36055, Start Num: 55

Candidate Starts for Bellis_42:

(Start: 14 @35627 has 3 MA's), (Start: 17 @35639 has 10 MA's), (Start: 20 @35648 has 39 MA's), (Start: 55 @35732 has 11 MA's), (59, 35750), (62, 35768), (66, 35777), (98, 35894), (131, 36032),

Gene: BigCheese_45 Start: 35356, Stop: 35772, Start Num: 20

Candidate Starts for BigCheese_45:

(Start: 17 @35347 has 10 MA's), (Start: 20 @35356 has 39 MA's), (Start: 55 @35443 has 11 MA's), (59, 35461), (66, 35488), (67, 35491), (88, 35566), (91, 35578), (118, 35686), (131, 35749),

Gene: BobsGarage_45 Start: 35443, Stop: 35772, Start Num: 55

Candidate Starts for BobsGarage_45:

(Start: 17 @35347 has 10 MA's), (Start: 20 @35356 has 39 MA's), (Start: 55 @35443 has 11 MA's), (59, 35461), (66, 35488), (67, 35491), (88, 35566), (91, 35578), (118, 35686), (131, 35749),

Gene: Bombitas_106 Start: 63398, Stop: 63718, Start Num: 41

Candidate Starts for Bombitas_106:

(Start: 41 @63398 has 33 MA's), (54, 63437), (88, 63536), (102, 63593), (112, 63629), (121, 63659), (129, 63704),

Gene: BourbonZero_41 Start: 35717, Stop: 36040, Start Num: 55

Candidate Starts for BourbonZero_41:

(Start: 14 @35609 has 3 MA's), (Start: 17 @35621 has 10 MA's), (Start: 20 @35630 has 39 MA's), (22, 35633), (Start: 55 @35717 has 11 MA's), (59, 35735), (62, 35753), (66, 35762), (98, 35879), (131, 36017),

Gene: BrainDrainer_43 Start: 34388, Stop: 34699, Start Num: 59

Candidate Starts for BrainDrainer_43:

(Start: 14 @34265 has 3 MA's), (Start: 17 @34277 has 10 MA's), (Start: 18 @34280 has 4 MA's), (Start: 55 @34370 has 11 MA's), (59, 34388), (66, 34415), (67, 34418), (88, 34493), (91, 34505), (118, 34613), (131, 34676), (138, 34691),

Gene: Breezona_45 Start: 35347, Stop: 35772, Start Num: 17

Candidate Starts for Breezona_45:

(Start: 17 @35347 has 10 MA's), (Start: 20 @35356 has 39 MA's), (Start: 55 @35443 has 11 MA's), (59, 35461), (66, 35488), (67, 35491), (88, 35566), (91, 35578), (118, 35686), (131, 35749),

Gene: Bromden_45 Start: 35106, Stop: 35519, Start Num: 18

Candidate Starts for Bromden_45:

(Start: 14 @35091 has 3 MA's), (Start: 17 @35103 has 10 MA's), (Start: 18 @35106 has 4 MA's), (Start: 20 @35112 has 39 MA's), (Start: 55 @35196 has 11 MA's), (59, 35214), (64, 35238), (66, 35241), (88, 35322), (131, 35496),

Gene: Bruin_65 Start: 44048, Stop: 44461, Start Num: 40

Candidate Starts for Bruin_65:

(6, 43874), (Start: 40 @44048 has 11 MA's), (86, 44189), (98, 44237), (110, 44285), (134, 44378), (150, 44441),

Gene: Button_63 Start: 43199, Stop: 43654, Start Num: 15

Candidate Starts for Button_63:

(Start: 15 @43199 has 2 MA's), (Start: 41 @43241 has 33 MA's), (44, 43253), (58, 43289), (61, 43304), (75, 43346), (79, 43364), (92, 43421), (94, 43427), (107, 43484), (122, 43547), (126, 43571), (129, 43589),

Gene: Calm_43 Start: 34040, Stop: 34456, Start Num: 20

Candidate Starts for Calm_43:

(Start: 14 @34019 has 3 MA's), (Start: 20 @34040 has 39 MA's), (47, 34106), (Start: 55 @34127 has 11 MA's), (59, 34145), (69, 34184), (73, 34196), (88, 34253), (103, 34313), (131, 34433),

Gene: Chaser_42 Start: 34097, Stop: 34510, Start Num: 18

Candidate Starts for Chaser_42:

(Start: 14 @34082 has 3 MA's), (Start: 17 @34094 has 10 MA's), (Start: 18 @34097 has 4 MA's), (Start: 55 @34187 has 11 MA's), (59, 34205), (66, 34232), (67, 34235), (88, 34313), (106, 34376), (122, 34439), (131, 34487),

Gene: CicholasNage_43 Start: 34148, Stop: 34477, Start Num: 55

Candidate Starts for CicholasNage_43:

(Start: 14 @34040 has 3 MA's), (Start: 20 @34061 has 39 MA's), (47, 34127), (Start: 55 @34148 has 11 MA's), (59, 34166), (69, 34205), (73, 34217), (88, 34274), (103, 34334), (131, 34454),

Gene: Claus_45 Start: 35462, Stop: 35791, Start Num: 55

Candidate Starts for Claus_45:

(Start: 17 @35366 has 10 MA's), (Start: 20 @35375 has 39 MA's), (Start: 55 @35462 has 11 MA's), (59, 35480), (66, 35507), (67, 35510), (88, 35588), (118, 35705), (131, 35768),

Gene: Clautastrophe_42 Start: 35625, Stop: 36053, Start Num: 14

Candidate Starts for Clautastrophe_42:

(Start: 14 @35625 has 3 MA's), (Start: 17 @35637 has 10 MA's), (Start: 20 @35646 has 39 MA's), (Start: 55 @35730 has 11 MA's), (59, 35748), (62, 35766), (66, 35775), (98, 35892), (131, 36030),

Gene: Constella_101 Start: 60252, Stop: 60566, Start Num: 41

Candidate Starts for Constella_101:

(Start: 41 @60252 has 33 MA's), (54, 60291), (60, 60318), (102, 60441), (129, 60552),

Gene: Contagion_64 Start: 44329, Stop: 44742, Start Num: 40

Candidate Starts for Contagion_64:

(6, 44155), (Start: 40 @44329 has 11 MA's), (86, 44470), (98, 44518), (110, 44566), (134, 44659), (150, 44722),

Gene: Courthouse_108 Start: 61433, Stop: 61753, Start Num: 41

Candidate Starts for Courthouse_108:

(Start: 41 @61433 has 33 MA's), (54, 61472), (88, 61571), (102, 61628), (112, 61664), (121, 61694), (129, 61739),

Gene: Crossroads_45 Start: 35358, Stop: 35774, Start Num: 20

Candidate Starts for Crossroads_45:

(Start: 17 @35349 has 10 MA's), (Start: 20 @35358 has 39 MA's), (Start: 55 @35445 has 11 MA's), (59, 35463), (66, 35490), (67, 35493), (88, 35568), (91, 35580), (118, 35688), (131, 35751),

Gene: DHan_46 Start: 35403, Stop: 35732, Start Num: 55

Candidate Starts for DHan_46:

(Start: 17 @35307 has 10 MA's), (Start: 20 @35316 has 39 MA's), (Start: 55 @35403 has 11 MA's), (59, 35421), (66, 35448), (67, 35451), (88, 35529), (118, 35646), (131, 35709),

Gene: Dallas_119 Start: 66991, Stop: 67311, Start Num: 41

Candidate Starts for Dallas_119:

(Start: 41 @66991 has 33 MA's), (54, 67030), (102, 67186), (112, 67222), (121, 67252), (129, 67297),

Gene: DanBing_44 Start: 35295, Stop: 35624, Start Num: 55

Candidate Starts for DanBing_44:

(Start: 17 @35199 has 10 MA's), (Start: 20 @35208 has 39 MA's), (Start: 55 @35295 has 11 MA's), (59, 35313), (66, 35340), (67, 35343), (88, 35421), (118, 35538), (131, 35601),

Gene: Dennebes_81 Start: 39474, Stop: 38989, Start Num: 24

Candidate Starts for Dennebes_81:

(Start: 24 @39474 has 2 MA's), (Start: 41 @39435 has 33 MA's), (62, 39366), (71, 39345), (96, 39243), (99, 39225), (101, 39213), (102, 39207), (103, 39204),

Gene: DirkDirk_42 Start: 34012, Stop: 34428, Start Num: 20

Candidate Starts for DirkDirk_42:

(Start: 14 @33991 has 3 MA's), (Start: 20 @34012 has 39 MA's), (47, 34078), (Start: 55 @34099 has 11 MA's), (59, 34117), (69, 34156), (73, 34168), (88, 34225), (103, 34285), (131, 34405),

Gene: DmpstrDiver_119 Start: 66397, Stop: 66717, Start Num: 41

Candidate Starts for DmpstrDiver_119:

(Start: 41 @66397 has 33 MA's), (54, 66436), (102, 66592), (112, 66628), (121, 66658), (129, 66703),

Gene: Douge_42 Start: 34035, Stop: 34448, Start Num: 18

Candidate Starts for Douge_42:

(Start: 14 @34020 has 3 MA's), (Start: 17 @34032 has 10 MA's), (Start: 18 @34035 has 4 MA's), (Start: 55 @34125 has 11 MA's), (59, 34143), (66, 34170), (67, 34173), (88, 34251), (106, 34314), (122, 34377), (131, 34425),

Gene: Douzhi_42 Start: 34231, Stop: 34554, Start Num: 55

Candidate Starts for Douzhi_42:

(Start: 14 @34126 has 3 MA's), (Start: 17 @34138 has 10 MA's), (Start: 18 @34141 has 4 MA's), (Start: 55 @34231 has 11 MA's), (59, 34249), (66, 34276), (67, 34279), (88, 34357), (106, 34420),

(122, 34483), (131, 34531),

Gene: Dove_104 Start: 61905, Stop: 62225, Start Num: 41

Candidate Starts for Dove_104:

(Start: 41 @61905 has 33 MA's), (54, 61944), (88, 62043), (102, 62100), (112, 62136), (121, 62166), (129, 62211),

Gene: DrSeegs_45 Start: 35356, Stop: 35772, Start Num: 20

Candidate Starts for DrSeegs_45:

(Start: 17 @35347 has 10 MA's), (Start: 20 @35356 has 39 MA's), (Start: 55 @35443 has 11 MA's), (59, 35461), (66, 35488), (67, 35491), (88, 35566), (91, 35578), (118, 35686), (131, 35749),

Gene: DuncansLeg_42 Start: 35754, Stop: 36077, Start Num: 55

Candidate Starts for DuncansLeg_42:

(Start: 14 @35646 has 3 MA's), (Start: 17 @35658 has 10 MA's), (Start: 20 @35667 has 39 MA's), (22, 35670), (Start: 55 @35754 has 11 MA's), (59, 35772), (62, 35790), (66, 35799), (98, 35916), (131, 36054),

Gene: DyoEdafos_44 Start: 34357, Stop: 34776, Start Num: 18

Candidate Starts for DyoEdafos_44:

(Start: 14 @34342 has 3 MA's), (Start: 17 @34354 has 10 MA's), (Start: 18 @34357 has 4 MA's), (Start: 55 @34447 has 11 MA's), (59, 34465), (66, 34492), (88, 34570), (106, 34642), (131, 34753),

Gene: Ejimix_113 Start: 67525, Stop: 67845, Start Num: 41

Candidate Starts for Ejimix_113:

(Start: 41 @67525 has 33 MA's), (54, 67564), (102, 67720), (112, 67756), (121, 67786), (129, 67831),

Gene: Ellson_42 Start: 35730, Stop: 36053, Start Num: 55

Candidate Starts for Ellson_42:

(Start: 14 @35622 has 3 MA's), (Start: 17 @35634 has 10 MA's), (Start: 20 @35643 has 39 MA's), (22, 35646), (Start: 55 @35730 has 11 MA's), (59, 35748), (62, 35766), (66, 35775), (98, 35892), (131, 36030),

Gene: Enceladus_42 Start: 33995, Stop: 34411, Start Num: 20

Candidate Starts for Enceladus_42:

(Start: 14 @33974 has 3 MA's), (Start: 20 @33995 has 39 MA's), (47, 34061), (Start: 55 @34082 has 11 MA's), (59, 34100), (69, 34139), (73, 34151), (88, 34208), (103, 34268), (131, 34388),

Gene: Fabian_73 Start: 38951, Stop: 38469, Start Num: 27

Candidate Starts for Fabian_73:

(Start: 27 @38951 has 15 MA's), (53, 38879), (62, 38846), (86, 38768), (96, 38726), (122, 38618), (138, 38555), (149, 38513),

Gene: Faith1_45 Start: 35347, Stop: 35772, Start Num: 17

Candidate Starts for Faith1_45:

(Start: 17 @35347 has 10 MA's), (Start: 20 @35356 has 39 MA's), (Start: 55 @35443 has 11 MA's), (59, 35461), (66, 35488), (67, 35491), (88, 35566), (91, 35578), (118, 35686), (131, 35749),

Gene: FarmResident_43 Start: 34169, Stop: 34492, Start Num: 55

Candidate Starts for FarmResident_43:

(Start: 14 @34064 has 3 MA's), (Start: 17 @34076 has 10 MA's), (Start: 18 @34079 has 4 MA's), (Start: 55 @34169 has 11 MA's), (59, 34187), (66, 34214), (67, 34217), (88, 34295), (106, 34358), (122, 34421), (131, 34469),

Gene: Finemlucis_45 Start: 35623, Stop: 36048, Start Num: 17

Candidate Starts for Finemlucis_45:

(Start: 17 @35623 has 10 MA's), (Start: 20 @35632 has 39 MA's), (Start: 55 @35719 has 11 MA's), (59, 35737), (66, 35764), (67, 35767), (88, 35842), (91, 35854), (118, 35962), (131, 36025),

Gene: Finnry_42 Start: 35733, Stop: 36056, Start Num: 55

Candidate Starts for Finnry_42:

(Start: 14 @35628 has 3 MA's), (Start: 17 @35640 has 10 MA's), (Start: 20 @35649 has 39 MA's), (Start: 55 @35733 has 11 MA's), (59, 35751), (62, 35769), (66, 35778), (98, 35895), (131, 36033),

Gene: FireRed_72 Start: 46025, Stop: 46438, Start Num: 40

Candidate Starts for FireRed_72:

(6, 45851), (Start: 40 @46025 has 11 MA's), (86, 46166), (98, 46214), (110, 46262), (134, 46355), (150, 46418),

Gene: FlowerPower_74 Start: 38621, Stop: 38139, Start Num: 27

Candidate Starts for FlowerPower_74:

(Start: 27 @38621 has 15 MA's), (53, 38549), (62, 38516), (86, 38438), (96, 38396), (122, 38288), (138, 38225), (149, 38183),

Gene: Gabriela_45 Start: 35618, Stop: 36034, Start Num: 20

Candidate Starts for Gabriela_45:

(Start: 17 @35609 has 10 MA's), (Start: 20 @35618 has 39 MA's), (Start: 55 @35705 has 11 MA's), (59, 35723), (66, 35750), (67, 35753), (88, 35828), (91, 35840), (118, 35948), (131, 36011),

Gene: Gardann_45 Start: 35357, Stop: 35773, Start Num: 20

Candidate Starts for Gardann_45:

(Start: 17 @35348 has 10 MA's), (Start: 20 @35357 has 39 MA's), (Start: 55 @35444 has 11 MA's), (59, 35462), (66, 35489), (67, 35492), (88, 35567), (91, 35579), (118, 35687), (131, 35750),

Gene: Geostin_69 Start: 38621, Stop: 38139, Start Num: 27

Candidate Starts for Geostin_69:

(Start: 27 @38621 has 15 MA's), (53, 38549), (62, 38516), (86, 38438), (96, 38396), (122, 38288), (138, 38225), (149, 38183),

Gene: GiKK_67 Start: 44458, Stop: 44943, Start Num: 16

Candidate Starts for GiKK_67:

(1, 44224), (2, 44242), (5, 44332), (7, 44353), (Start: 16 @44458 has 3 MA's), (Start: 24 @44482 has 2 MA's), (Start: 41 @44521 has 33 MA's), (44, 44533), (75, 44635), (94, 44716), (107, 44773), (122, 44836), (126, 44860), (129, 44878),

Gene: Gonephishing_107 Start: 60857, Stop: 61180, Start Num: 41

Candidate Starts for Gonephishing_107:

(Start: 41 @60857 has 33 MA's), (54, 60896), (78, 60962), (85, 60983), (86, 60986), (92, 61013), (129, 61166),

Gene: Grayson_232 Start: 113102, Stop: 113485, Start Num: 36

Candidate Starts for Grayson_232:

(35, 113096), (Start: 36 @113102 has 4 MA's), (84, 113249), (94, 113288), (119, 113396), (132, 113456), (138, 113465),

Gene: Grayson_26 Start: 7449, Stop: 7075, Start Num: 38

Candidate Starts for Grayson_26:

(Start: 38 @7449 has 3 MA's), (89, 7281), (96, 7254), (106, 7209), (123, 7140),

Gene: Grayson_21 Start: 6068, Stop: 5700, Start Num: 42

Candidate Starts for Grayson_21:

(30, 6098), (32, 6092), (35, 6086), (Start: 42 @6068 has 6 MA's), (86, 5924), (89, 5909), (137, 5717),

Gene: Grayson_20 Start: 5707, Stop: 5357, Start Num: 42

Candidate Starts for Grayson_20:

(34, 5728), (Start: 42 @5707 has 6 MA's), (115, 5467),

Gene: Gremlin23_74 Start: 38621, Stop: 38139, Start Num: 27

Candidate Starts for Gremlin23_74:

(Start: 27 @38621 has 15 MA's), (53, 38549), (62, 38516), (86, 38438), (96, 38396), (122, 38288), (138, 38225), (149, 38183),

Gene: GuuelaD_44 Start: 35386, Stop: 35811, Start Num: 17

Candidate Starts for GuuelaD_44:

(Start: 17 @35386 has 10 MA's), (Start: 20 @35395 has 39 MA's), (Start: 55 @35482 has 11 MA's), (59, 35500), (66, 35527), (67, 35530), (88, 35605), (91, 35617), (118, 35725), (131, 35788),

Gene: Hafay_45 Start: 35477, Stop: 35806, Start Num: 55

Candidate Starts for Hafay_45:

(Start: 17 @35381 has 10 MA's), (Start: 20 @35390 has 39 MA's), (Start: 55 @35477 has 11 MA's), (59, 35495), (66, 35522), (67, 35525), (88, 35600), (91, 35612), (118, 35720), (131, 35783),

Gene: Halena_42 Start: 34036, Stop: 34452, Start Num: 20

Candidate Starts for Halena_42:

(Start: 14 @34015 has 3 MA's), (Start: 20 @34036 has 39 MA's), (47, 34102), (Start: 55 @34123 has 11 MA's), (59, 34141), (69, 34180), (73, 34192), (88, 34249), (103, 34309), (131, 34429),

Gene: Halley_121 Start: 67841, Stop: 68161, Start Num: 41

Candidate Starts for Halley_121:

(Start: 41 @67841 has 33 MA's), (54, 67880), (102, 68036), (112, 68072), (121, 68102), (129, 68147),

Gene: Hannaconda_104 Start: 59803, Stop: 60126, Start Num: 41

Candidate Starts for Hannaconda_104:

(Start: 41 @59803 has 33 MA's), (54, 59842), (78, 59908), (85, 59929), (86, 59932), (92, 59959), (129, 60112),

Gene: HaugeAnator_76 Start: 38999, Stop: 38496, Start Num: 27

Candidate Starts for HaugeAnator_76:

(Start: 27 @38999 has 15 MA's), (Start: 41 @38963 has 33 MA's), (53, 38927), (62, 38891), (74, 38858), (86, 38810), (95, 38771), (122, 38660), (126, 38636), (142, 38582),

Gene: HokkenD_108 Start: 64913, Stop: 65233, Start Num: 41

Candidate Starts for HokkenD_108:

(Start: 41 @64913 has 33 MA's), (54, 64952), (88, 65051), (102, 65108), (112, 65144), (121, 65174), (129, 65219),

Gene: Hughesyang_118 Start: 67297, Stop: 67617, Start Num: 41

Candidate Starts for Hughesyang_118:

(Start: 41 @67297 has 33 MA's), (54, 67336), (102, 67492), (112, 67528), (121, 67558), (129, 67603),

Gene: Immanuel3_74 Start: 39005, Stop: 38502, Start Num: 27

Candidate Starts for Immanuel3_74:

(Start: 27 @39005 has 15 MA's), (Start: 41 @38969 has 33 MA's), (53, 38933), (62, 38897), (86, 38816), (95, 38777), (122, 38666), (126, 38642), (142, 38588),

Gene: Itos_44 Start: 34253, Stop: 34678, Start Num: 17

Candidate Starts for Itos_44:

(Start: 17 @34253 has 10 MA's), (Start: 20 @34262 has 39 MA's), (Start: 55 @34349 has 11 MA's), (59, 34367), (66, 34394), (67, 34397), (88, 34472), (91, 34484), (118, 34592), (131, 34655),

Gene: JPandJE_75 Start: 39350, Stop: 38847, Start Num: 27

Candidate Starts for JPandJE_75:

(Start: 27 @39350 has 15 MA's), (Start: 41 @39314 has 33 MA's), (53, 39278), (62, 39242), (74, 39209), (86, 39161), (95, 39122), (122, 39011), (126, 38987), (142, 38933),

Gene: Jamzy_67 Start: 44194, Stop: 44679, Start Num: 16

Candidate Starts for Jamzy_67:

(1, 43960), (2, 43978), (5, 44068), (7, 44089), (Start: 16 @44194 has 3 MA's), (Start: 24 @44218 has 2 MA's), (Start: 41 @44257 has 33 MA's), (44, 44269), (75, 44371), (94, 44452), (122, 44572), (126, 44596), (129, 44614),

Gene: Jobypre_42 Start: 35730, Stop: 36053, Start Num: 55

Candidate Starts for Jobypre_42:

(Start: 14 @35625 has 3 MA's), (Start: 17 @35637 has 10 MA's), (Start: 20 @35646 has 39 MA's), (Start: 55 @35730 has 11 MA's), (59, 35748), (62, 35766), (66, 35775), (98, 35892), (131, 36030),

Gene: JoeDirt_42 Start: 33993, Stop: 34409, Start Num: 20

Candidate Starts for JoeDirt_42:

(Start: 14 @33972 has 3 MA's), (Start: 20 @33993 has 39 MA's), (47, 34059), (Start: 55 @34080 has 11 MA's), (59, 34098), (69, 34137), (73, 34149), (88, 34206), (103, 34266), (131, 34386),

Gene: Jubie_42 Start: 35647, Stop: 36054, Start Num: 20

Candidate Starts for Jubie_42:

(Start: 14 @35626 has 3 MA's), (Start: 17 @35638 has 10 MA's), (Start: 20 @35647 has 39 MA's), (Start: 55 @35731 has 11 MA's), (59, 35749), (62, 35767), (66, 35776), (98, 35893), (131, 36031),

Gene: JuicyJay_115 Start: 68611, Stop: 68931, Start Num: 41

Candidate Starts for JuicyJay_115:

(Start: 41 @68611 has 33 MA's), (54, 68650), (88, 68749), (102, 68806), (112, 68842), (121, 68872), (129, 68917),

Gene: Kahlid_45 Start: 35362, Stop: 35778, Start Num: 20

Candidate Starts for Kahlid_45:

(Start: 17 @35353 has 10 MA's), (Start: 20 @35362 has 39 MA's), (Start: 55 @35449 has 11 MA's), (59, 35467), (66, 35494), (67, 35497), (88, 35572), (91, 35584), (118, 35692), (131, 35755),

Gene: KashFlow_110 Start: 62308, Stop: 62631, Start Num: 41

Candidate Starts for KashFlow_110:

(Start: 41 @62308 has 33 MA's), (54, 62347), (78, 62413), (85, 62434), (86, 62437), (92, 62464), (129, 62617),

Gene: Kingsolomon_42 Start: 35730, Stop: 36053, Start Num: 55

Candidate Starts for Kingsolomon_42:

(Start: 14 @35625 has 3 MA's), (Start: 17 @35637 has 10 MA's), (Start: 20 @35646 has 39 MA's), (Start: 55 @35730 has 11 MA's), (59, 35748), (62, 35766), (66, 35775), (98, 35892), (131, 36030),

Gene: KirDoubleO7_40 Start: 35758, Stop: 36081, Start Num: 55

Candidate Starts for KirDoubleO7_40:

(Start: 14 @35650 has 3 MA's), (Start: 17 @35662 has 10 MA's), (Start: 20 @35671 has 39 MA's), (22, 35674), (Start: 55 @35758 has 11 MA's), (59, 35776), (62, 35794), (66, 35803), (98, 35920), (131, 36058),

Gene: Krypton555_42 Start: 35542, Stop: 35970, Start Num: 14

Candidate Starts for Krypton555_42:

(Start: 14 @35542 has 3 MA's), (Start: 17 @35554 has 10 MA's), (Start: 20 @35563 has 39 MA's), (Start: 55 @35647 has 11 MA's), (59, 35665), (62, 35683), (66, 35692), (98, 35809), (131, 35947),

Gene: Kumquat_74 Start: 38229, Stop: 37786, Start Num: 23

Candidate Starts for Kumquat_74:

(11, 38286), (12, 38262), (Start: 23 @38229 has 3 MA's), (86, 38040), (114, 37926), (148, 37803),

Gene: LeBron_43 Start: 34037, Stop: 34453, Start Num: 20

Candidate Starts for LeBron_43:

(Start: 14 @34016 has 3 MA's), (Start: 20 @34037 has 39 MA's), (47, 34103), (Start: 55 @34124 has 11 MA's), (59, 34142), (69, 34181), (73, 34193), (88, 34250), (103, 34310), (131, 34430),

Gene: Lewan_45 Start: 35349, Stop: 35765, Start Num: 20

Candidate Starts for Lewan_45:

(Start: 17 @35340 has 10 MA's), (Start: 20 @35349 has 39 MA's), (Start: 55 @35436 has 11 MA's), (59, 35454), (66, 35481), (67, 35484), (88, 35559), (91, 35571), (118, 35679), (131, 35742),

Gene: LilDestine_45 Start: 35354, Stop: 35770, Start Num: 20

Candidate Starts for LilDestine_45:

(Start: 17 @35345 has 10 MA's), (Start: 20 @35354 has 39 MA's), (Start: 55 @35441 has 11 MA's), (59, 35459), (66, 35486), (67, 35489), (88, 35564), (91, 35576), (118, 35684), (131, 35747),

Gene: LittleE_118 Start: 65723, Stop: 66046, Start Num: 41

Candidate Starts for LittleE_118:

(Start: 41 @65723 has 33 MA's), (54, 65762), (78, 65828), (85, 65849), (86, 65852), (92, 65879), (129, 66032),

Gene: LiyuLake_42 Start: 35720, Stop: 36043, Start Num: 55

Candidate Starts for LiyuLake_42:

(Start: 14 @35612 has 3 MA's), (Start: 17 @35624 has 10 MA's), (Start: 20 @35633 has 39 MA's), (22, 35636), (Start: 55 @35720 has 11 MA's), (59, 35738), (62, 35756), (66, 35765), (98, 35882), (131, 36020),

Gene: Loadrie_44 Start: 35379, Stop: 35804, Start Num: 17

Candidate Starts for Loadrie_44:

(Start: 17 @35379 has 10 MA's), (Start: 20 @35388 has 39 MA's), (Start: 55 @35475 has 11 MA's), (59, 35493), (66, 35520), (67, 35523), (88, 35598), (91, 35610), (118, 35718), (131, 35781),

Gene: Lolly9_42 Start: 35541, Stop: 35864, Start Num: 55

Candidate Starts for Lolly9_42:

(Start: 14 @35436 has 3 MA's), (Start: 20 @35457 has 39 MA's), (Start: 55 @35541 has 11 MA's), (59, 35559), (62, 35577), (66, 35586), (98, 35703), (131, 35841),

Gene: Lucky2013_110 Start: 61874, Stop: 62194, Start Num: 41

Candidate Starts for Lucky2013_110:

(Start: 41 @61874 has 33 MA's), (54, 61913), (88, 62012), (102, 62069), (112, 62105), (121, 62135), (129, 62180),

Gene: Lumos_42 Start: 35643, Stop: 36050, Start Num: 20

Candidate Starts for Lumos_42:

(Start: 14 @35622 has 3 MA's), (Start: 17 @35634 has 10 MA's), (Start: 20 @35643 has 39 MA's), (Start: 55 @35727 has 11 MA's), (59, 35745), (62, 35763), (66, 35772), (98, 35889), (131, 36027),

Gene: MAckerman_43 Start: 34117, Stop: 34446, Start Num: 55

Candidate Starts for MAckerman_43:

(Start: 14 @34009 has 3 MA's), (Start: 20 @34030 has 39 MA's), (47, 34096), (Start: 55 @34117 has 11 MA's), (59, 34135), (69, 34174), (73, 34186), (88, 34243), (103, 34303), (131, 34423),

Gene: MISSy_69 Start: 45034, Stop: 45447, Start Num: 40

Candidate Starts for MISSy_69:

(6, 44860), (Start: 40 @45034 has 11 MA's), (86, 45175), (98, 45223), (110, 45271), (134, 45364), (150, 45427),

Gene: MPhalcon_69 Start: 45027, Stop: 45440, Start Num: 40

Candidate Starts for MPhalcon_69:

(6, 44853), (Start: 40 @45027 has 11 MA's), (86, 45168), (98, 45216), (110, 45264), (134, 45357), (150, 45420),

Gene: MadamMonkfish_80 Start: 48896, Stop: 49234, Start Num: 51

Candidate Starts for MadamMonkfish_80:

(3, 48644), (46, 48881), (Start: 51 @48896 has 1 MA's), (61, 48932), (129, 49214),

Gene: Manuel_74 Start: 38664, Stop: 38179, Start Num: 26

Candidate Starts for Manuel_74:

(11, 38724), (Start: 26 @38664 has 1 MA's), (60, 38565), (77, 38517), (78, 38514), (86, 38481), (96, 38439), (100, 38415), (128, 38295), (152, 38193),

Gene: Margaret_67 Start: 43929, Stop: 44381, Start Num: 16

Candidate Starts for Margaret_67:

(Start: 16 @43929 has 3 MA's), (Start: 41 @43968 has 33 MA's), (44, 43980), (58, 44016), (61, 44031), (75, 44073), (79, 44091), (88, 44133), (92, 44148), (94, 44154), (122, 44274), (126, 44298), (129, 44316), (146, 44361),

Gene: Maxxinista_70 Start: 44906, Stop: 45316, Start Num: 40

Candidate Starts for Maxxinista_70:

(Start: 40 @44906 has 11 MA's), (86, 45047), (98, 45095), (110, 45143), (134, 45236), (147, 45278),

Gene: MiaZeal_113 Start: 62505, Stop: 62825, Start Num: 41

Candidate Starts for MiaZeal_113:

(Start: 41 @62505 has 33 MA's), (54, 62544), (88, 62643), (102, 62700), (112, 62736), (121, 62766), (129, 62811),

Gene: Miley16_45 Start: 35347, Stop: 35772, Start Num: 17

Candidate Starts for Miley16_45:

(Start: 17 @35347 has 10 MA's), (Start: 20 @35356 has 39 MA's), (Start: 55 @35443 has 11 MA's), (59, 35461), (66, 35488), (67, 35491), (88, 35566), (91, 35578), (118, 35686), (131, 35749),

Gene: Minerva_116 Start: 65898, Stop: 66218, Start Num: 41

Candidate Starts for Minerva_116:

(Start: 41 @65898 has 33 MA's), (54, 65937), (102, 66093), (112, 66129), (121, 66159), (129, 66204),

Gene: MiniLon_42 Start: 35458, Stop: 35865, Start Num: 20

Candidate Starts for MiniLon_42:

(Start: 14 @35437 has 3 MA's), (Start: 20 @35458 has 39 MA's), (Start: 55 @35542 has 11 MA's), (59, 35560), (62, 35578), (66, 35587), (98, 35704), (131, 35842),

Gene: MiniMac_42 Start: 35455, Stop: 35862, Start Num: 20

Candidate Starts for MiniMac_42:

(Start: 14 @35434 has 3 MA's), (Start: 20 @35455 has 39 MA's), (Start: 55 @35539 has 11 MA's), (59, 35557), (62, 35575), (66, 35584), (98, 35701), (131, 35839),

Gene: Misfit_69 Start: 46046, Stop: 46459, Start Num: 40

Candidate Starts for Misfit_69:

(6, 45872), (Start: 40 @46046 has 11 MA's), (86, 46187), (98, 46235), (110, 46283), (134, 46376), (150, 46439),

Gene: MkaliMitinis3_45 Start: 35358, Stop: 35774, Start Num: 20

Candidate Starts for MkaliMitinis3_45:

(Start: 17 @35349 has 10 MA's), (Start: 20 @35358 has 39 MA's), (Start: 55 @35445 has 11 MA's), (59, 35463), (66, 35490), (67, 35493), (88, 35568), (91, 35580), (118, 35688), (131, 35751),

Gene: Moostard_42 Start: 35732, Stop: 36055, Start Num: 55

Candidate Starts for Moostard_42:

(Start: 14 @35627 has 3 MA's), (Start: 17 @35639 has 10 MA's), (Start: 20 @35648 has 39 MA's), (Start: 55 @35732 has 11 MA's), (59, 35750), (62, 35768), (66, 35777), (98, 35894), (131, 36032),

Gene: Mosby_64 Start: 44329, Stop: 44742, Start Num: 40

Candidate Starts for Mosby_64:

(6, 44155), (Start: 40 @44329 has 11 MA's), (86, 44470), (98, 44518), (110, 44566), (134, 44659), (150, 44722),

Gene: MsGreen_42 Start: 35625, Stop: 36053, Start Num: 14

Candidate Starts for MsGreen_42:

(Start: 14 @35625 has 3 MA's), (Start: 17 @35637 has 10 MA's), (Start: 20 @35646 has 39 MA's), (Start: 55 @35730 has 11 MA's), (59, 35748), (62, 35766), (66, 35775), (98, 35892), (131, 36030),

Gene: Nala_70 Start: 45539, Stop: 45952, Start Num: 40

Candidate Starts for Nala_70:

(6, 45365), (Start: 40 @45539 has 11 MA's), (86, 45680), (98, 45728), (110, 45776), (134, 45869), (150, 45932),

Gene: Netyap_45 Start: 35356, Stop: 35772, Start Num: 20

Candidate Starts for Netyap_45:

(Start: 17 @35347 has 10 MA's), (Start: 20 @35356 has 39 MA's), (Start: 55 @35443 has 11 MA's), (59, 35461), (66, 35488), (67, 35491), (88, 35566), (91, 35578), (118, 35686), (131, 35749),

Gene: Neville_54 Start: 37372, Stop: 37770, Start Num: 25

Candidate Starts for Neville_54:

(Start: 25 @37372 has 3 MA's), (37, 37402), (50, 37438), (52, 37441), (56, 37447), (60, 37471), (90, 37558), (97, 37579), (101, 37603), (122, 37678), (126, 37702), (143, 37756), (144, 37762),

Gene: Neville_46 Start: 34837, Stop: 35271, Start Num: 28

Candidate Starts for Neville_46:

(Start: 28 @34837 has 3 MA's), (33, 34849), (Start: 41 @34867 has 33 MA's), (50, 34900), (76, 34981), (93, 35050), (122, 35149), (125, 35167), (127, 35182), (129, 35191), (136, 35206),

Gene: NiceHouse_171 Start: 97963, Stop: 98331, Start Num: 49

Candidate Starts for NiceHouse_171:

(29, 97906), (Start: 49 @97963 has 1 MA's), (92, 98119), (125, 98266), (129, 98290),

Gene: NiceHouse_173 Start: 98723, Stop: 99082, Start Num: 42

Candidate Starts for NiceHouse_173:

(21, 98672), (Start: 42 @98723 has 6 MA's), (50, 98753), (85, 98870), (95, 98912), (131, 99053),

Gene: NiceHouse_172 Start: 98331, Stop: 98723, Start Num: 31

Candidate Starts for NiceHouse_172:

(Start: 31 @98331 has 1 MA's), (45, 98373), (47, 98376), (71, 98448),

Gene: Nicholas_42 Start: 35730, Stop: 36053, Start Num: 55

Candidate Starts for Nicholas_42:

(Start: 14 @35625 has 3 MA's), (Start: 17 @35637 has 10 MA's), (Start: 20 @35646 has 39 MA's), (Start: 55 @35730 has 11 MA's), (59, 35748), (62, 35766), (66, 35775), (98, 35892), (131, 36030),

Gene: Nicholasp3_45 Start: 35348, Stop: 35773, Start Num: 17

Candidate Starts for Nicholasp3_45:

(Start: 17 @35348 has 10 MA's), (Start: 20 @35357 has 39 MA's), (Start: 55 @35444 has 11 MA's), (59, 35462), (66, 35489), (67, 35492), (88, 35567), (91, 35579), (118, 35687), (131, 35750),

Gene: NihilNomen_120 Start: 66563, Stop: 66883, Start Num: 41

Candidate Starts for NihilNomen_120:

(Start: 41 @66563 has 33 MA's), (54, 66602), (88, 66701), (102, 66758), (112, 66794), (121, 66824), (129, 66869),

Gene: Nimrod_69 Start: 46236, Stop: 46649, Start Num: 40

Candidate Starts for Nimrod_69:

(6, 46062), (Start: 40 @46236 has 11 MA's), (86, 46377), (98, 46425), (110, 46473), (134, 46566), (150, 46629),

Gene: Odette_120 Start: 66457, Stop: 66777, Start Num: 41

Candidate Starts for Odette_120:

(Start: 41 @66457 has 33 MA's), (54, 66496), (88, 66595), (102, 66652), (112, 66688), (121, 66718), (129, 66763),

Gene: OhShagHennessy_42 Start: 33983, Stop: 34399, Start Num: 20

Candidate Starts for OhShagHennessy_42:

(Start: 14 @33962 has 3 MA's), (Start: 20 @33983 has 39 MA's), (47, 34049), (Start: 55 @34070 has 11 MA's), (59, 34088), (69, 34127), (73, 34139), (88, 34196), (103, 34256), (131, 34376),

Gene: Olicious_76 Start: 39002, Stop: 38499, Start Num: 27

Candidate Starts for Olicious_76:

(Start: 27 @39002 has 15 MA's), (Start: 41 @38966 has 33 MA's), (53, 38930), (62, 38897), (86, 38813), (95, 38774), (111, 38702), (128, 38627), (142, 38585), (151, 38540),

Gene: Omega_124 Start: 66872, Stop: 67195, Start Num: 41

Candidate Starts for Omega_124:

(Start: 41 @66872 has 33 MA's), (54, 66911), (78, 66977), (85, 66998), (86, 67001), (92, 67028), (129, 67181),

Gene: PYPDinur_41 Start: 34231, Stop: 34560, Start Num: 55

Candidate Starts for PYPDinur_41:

(Start: 14 @34126 has 3 MA's), (Start: 17 @34138 has 10 MA's), (Start: 18 @34141 has 4 MA's), (Start: 55 @34231 has 11 MA's), (59, 34249), (66, 34276), (67, 34279), (88, 34354), (91, 34366), (118, 34474), (131, 34537), (138, 34552),

Gene: Percastrophe_76 Start: 38934, Stop: 38431, Start Num: 27

Candidate Starts for Percastrophe_76:

(Start: 27 @38934 has 15 MA's), (Start: 41 @38898 has 33 MA's), (53, 38862), (62, 38826), (74, 38793), (86, 38745), (95, 38706), (122, 38595), (126, 38571), (142, 38517), (152, 38451),

Gene: Peregrin_24 Start: 6762, Stop: 6388, Start Num: 38

Candidate Starts for Peregrin_24:

(Start: 38 @6762 has 3 MA's), (57, 6708), (81, 6633), (88, 6597), (89, 6594), (102, 6534),

Gene: Peregrin_20 Start: 5906, Stop: 5532, Start Num: 42

Candidate Starts for Peregrin_20:

(Start: 42 @5906 has 6 MA's), (86, 5762), (89, 5747), (137, 5555), (139, 5552),

Gene: Peregrin_19 Start: 5539, Stop: 5195, Start Num: 42

Candidate Starts for Peregrin_19:

(Start: 42 @5539 has 6 MA's), (115, 5299),

Gene: Peregrin_226 Start: 113095, Stop: 113481, Start Num: 36

Candidate Starts for Peregrin_226:

(Start: 36 @113095 has 4 MA's), (63, 113182), (82, 113239), (84, 113245), (119, 113392), (132, 113452), (138, 113461),

Gene: Phoebus_119 Start: 68421, Stop: 68741, Start Num: 41

Candidate Starts for Phoebus_119:

(Start: 41 @68421 has 33 MA's), (54, 68460), (88, 68559), (102, 68616), (112, 68652), (121, 68682), (129, 68727),

Gene: Porcelain_113 Start: 62820, Stop: 63140, Start Num: 41

Candidate Starts for Porcelain_113:

(Start: 41 @62820 has 33 MA's), (54, 62859), (88, 62958), (102, 63015), (112, 63051), (121, 63081), (129, 63126),

Gene: Pound_108 Start: 64917, Stop: 65237, Start Num: 41

Candidate Starts for Pound_108:

(Start: 41 @64917 has 33 MA's), (54, 64956), (102, 65112), (112, 65148), (121, 65178), (129, 65223),

Gene: Quby_43 Start: 34125, Stop: 34448, Start Num: 55

Candidate Starts for Quby_43:

(Start: 14 @34020 has 3 MA's), (Start: 17 @34032 has 10 MA's), (Start: 18 @34035 has 4 MA's), (Start: 27 @34050 has 15 MA's), (Start: 55 @34125 has 11 MA's), (59, 34143), (66, 34170), (67, 34173), (88, 34251), (106, 34314), (122, 34377), (131, 34425),

Gene: Rabbitrun_55 Start: 37898, Stop: 38293, Start Num: 25

Candidate Starts for Rabbitrun_55:

(9, 37826), (10, 37832), (13, 37865), (Start: 18 @37880 has 4 MA's), (Start: 25 @37898 has 3 MA's), (43, 37943), (48, 37958), (52, 37970), (116, 38183), (124, 38213), (143, 38282),

Gene: Rabbitrun_47 Start: 35261, Stop: 35668, Start Num: 28

Candidate Starts for Rabbitrun_47:

(Start: 28 @35261 has 3 MA's), (33, 35273), (Start: 41 @35291 has 33 MA's), (50, 35324), (77, 35405), (92, 35465), (122, 35570), (126, 35594),

Gene: RanchParmCat_65 Start: 44221, Stop: 44673, Start Num: 16

Candidate Starts for RanchParmCat_65:

(4, 44083), (Start: 16 @44221 has 3 MA's), (Start: 41 @44260 has 33 MA's), (44, 44272), (58, 44308), (61, 44323), (75, 44365), (79, 44383), (88, 44425), (92, 44440), (94, 44446), (122, 44566), (126, 44590), (129, 44608), (146, 44653),

Gene: Redno2_112 Start: 64353, Stop: 64673, Start Num: 41

Candidate Starts for Redno2_112:

(Start: 41 @64353 has 33 MA's), (54, 64392), (88, 64491), (102, 64548), (112, 64584), (121, 64614), (129, 64659),

Gene: RetrieverFever_74 Start: 38621, Stop: 38139, Start Num: 27

Candidate Starts for RetrieverFever_74:

(Start: 27 @38621 has 15 MA's), (53, 38549), (62, 38516), (86, 38438), (96, 38396), (122, 38288), (138, 38225), (149, 38183),

Gene: Rideau_80 Start: 39365, Stop: 38880, Start Num: 24

Candidate Starts for Rideau_80:

(Start: 24 @39365 has 2 MA's), (Start: 41 @39326 has 33 MA's), (62, 39257), (71, 39236), (96, 39134), (99, 39116), (101, 39104), (102, 39098), (103, 39095),

Gene: Romero_76 Start: 38995, Stop: 38492, Start Num: 27

Candidate Starts for Romero_76:

(Start: 27 @38995 has 15 MA's), (Start: 41 @38959 has 33 MA's), (53, 38923), (62, 38887), (86, 38806), (95, 38767), (122, 38656), (126, 38632), (142, 38578),

Gene: Rose5_42 Start: 34025, Stop: 34441, Start Num: 20

Candidate Starts for Rose5_42:

(Start: 14 @34004 has 3 MA's), (Start: 20 @34025 has 39 MA's), (47, 34091), (Start: 55 @34112 has 11 MA's), (59, 34130), (69, 34169), (73, 34181), (88, 34238), (103, 34298), (131, 34418),

Gene: RosePharie_77 Start: 39114, Stop: 38629, Start Num: 27

Candidate Starts for RosePharie_77:

(8, 39192), (19, 39123), (Start: 27 @39114 has 15 MA's), (68, 38994), (96, 38889), (144, 38703), (145, 38700), (153, 38637),

Gene: Rumpelstiltskin_45 Start: 35623, Stop: 36039, Start Num: 20

Candidate Starts for Rumpelstiltskin_45:

(Start: 17 @35614 has 10 MA's), (Start: 20 @35623 has 39 MA's), (Start: 55 @35710 has 11 MA's), (59, 35728), (66, 35755), (67, 35758), (88, 35833), (91, 35845), (118, 35953), (122, 35968), (131, 36016),

Gene: Samty_42 Start: 35731, Stop: 36054, Start Num: 55

Candidate Starts for Samty_42:

(Start: 14 @35626 has 3 MA's), (Start: 17 @35638 has 10 MA's), (Start: 20 @35647 has 39 MA's), (Start: 55 @35731 has 11 MA's), (59, 35749), (62, 35767), (66, 35776), (98, 35893), (131, 36031),

Gene: Sarshaun_45 Start: 35477, Stop: 35806, Start Num: 55

Candidate Starts for Sarshaun_45:

(Start: 17 @35381 has 10 MA's), (Start: 20 @35390 has 39 MA's), (Start: 55 @35477 has 11 MA's), (59, 35495), (66, 35522), (67, 35525), (88, 35600), (91, 35612), (118, 35720), (131, 35783),

Gene: Schatzie_113 Start: 65339, Stop: 65659, Start Num: 41

Candidate Starts for Schatzie_113:

(Start: 41 @65339 has 33 MA's), (54, 65378), (88, 65477), (102, 65534), (112, 65570), (121, 65600), (129, 65645),

Gene: Sheng711_43 Start: 34231, Stop: 34560, Start Num: 55

Candidate Starts for Sheng711_43:

(Start: 14 @34126 has 3 MA's), (Start: 17 @34138 has 10 MA's), (Start: 18 @34141 has 4 MA's), (Start: 55 @34231 has 11 MA's), (59, 34249), (66, 34276), (67, 34279), (88, 34354), (91, 34366), (118, 34474), (131, 34537), (138, 34552),

Gene: Silverleaf_42 Start: 34025, Stop: 34441, Start Num: 20

Candidate Starts for Silverleaf_42:

(Start: 14 @34004 has 3 MA's), (Start: 20 @34025 has 39 MA's), (47, 34091), (Start: 55 @34112 has 11 MA's), (59, 34130), (69, 34169), (73, 34181), (88, 34238), (103, 34298), (131, 34418),

Gene: Snenia_42 Start: 35731, Stop: 36054, Start Num: 55

Candidate Starts for Snenia_42:

(Start: 14 @35626 has 3 MA's), (Start: 17 @35638 has 10 MA's), (Start: 20 @35647 has 39 MA's), (Start: 55 @35731 has 11 MA's), (59, 35749), (62, 35767), (66, 35776), (98, 35893), (131, 36031),

Gene: Soap141_45 Start: 35477, Stop: 35806, Start Num: 55

Candidate Starts for Soap141_45:

(Start: 17 @35381 has 10 MA's), (Start: 20 @35390 has 39 MA's), (Start: 55 @35477 has 11 MA's), (59, 35495), (66, 35522), (67, 35525), (88, 35600), (91, 35612), (118, 35720), (131, 35783),

Gene: Squint_111 Start: 62624, Stop: 62944, Start Num: 41

Candidate Starts for Squint_111:

(Start: 41 @62624 has 33 MA's), (54, 62663), (88, 62762), (102, 62819), (112, 62855), (121, 62885), (129, 62930),

Gene: Stella_77 Start: 39604, Stop: 39116, Start Num: 24

Candidate Starts for Stella_77:

(12, 39637), (Start: 24 @39604 has 2 MA's), (53, 39529), (60, 39499), (71, 39469), (87, 39400), (88, 39397), (113, 39292), (128, 39223),

Gene: Superphikiman_110 Start: 61715, Stop: 62035, Start Num: 41

Candidate Starts for Superphikiman_110:

(Start: 41 @61715 has 33 MA's), (54, 61754), (88, 61853), (102, 61910), (112, 61946), (121, 61976), (129, 62021),

Gene: Terminus_71 Start: 46046, Stop: 46459, Start Num: 40

Candidate Starts for Terminus_71:

(6, 45872), (Start: 40 @46046 has 11 MA's), (86, 46187), (98, 46235), (110, 46283), (134, 46376), (150, 46439),

Gene: Thibault_99 Start: 60528, Stop: 60848, Start Num: 41

Candidate Starts for Thibault_99:

(Start: 41 @60528 has 33 MA's), (54, 60567), (102, 60723), (112, 60759), (121, 60789), (129, 60834),

Gene: ToriToki_76 Start: 38998, Stop: 38495, Start Num: 27

Candidate Starts for ToriToki_76:

(Start: 27 @38998 has 15 MA's), (Start: 41 @38962 has 33 MA's), (53, 38926), (62, 38890), (74, 38857), (86, 38809), (95, 38770), (122, 38659), (126, 38635), (142, 38581), (152, 38515),

Gene: Tourach_44 Start: 35371, Stop: 35784, Start Num: 20

Candidate Starts for Tourach_44:

(Start: 17 @35362 has 10 MA's), (Start: 20 @35371 has 39 MA's), (Start: 55 @35458 has 11 MA's), (59, 35476), (66, 35503), (67, 35506), (88, 35581), (131, 35761),

Gene: Trax_45 Start: 35143, Stop: 35541, Start Num: 28

Candidate Starts for Trax_45:

(Start: 28 @35143 has 3 MA's), (33, 35155), (Start: 41 @35173 has 33 MA's), (50, 35206), (77, 35287), (92, 35347), (105, 35398), (126, 35476), (133, 35503), (141, 35524),

Gene: Trax_53 Start: 37657, Stop: 38055, Start Num: 25

Candidate Starts for Trax_53:

(Start: 25 @37657 has 3 MA's), (37, 37687), (50, 37723), (52, 37726), (56, 37732), (60, 37756), (90, 37843), (97, 37864), (101, 37888), (122, 37963), (126, 37987), (143, 38041), (144, 38047),

Gene: Treat_76 Start: 38873, Stop: 38370, Start Num: 27

Candidate Starts for Treat_76:

(Start: 27 @38873 has 15 MA's), (Start: 41 @38837 has 33 MA's), (53, 38801), (62, 38765), (74, 38732), (83, 38699), (86, 38684), (95, 38645), (122, 38534), (126, 38510), (142, 38456),

Gene: Trina_234 Start: 121206, Stop: 121604, Start Num: 41

Candidate Starts for Trina_234:

(30, 121179), (39, 121200), (Start: 41 @121206 has 33 MA's), (43, 121215), (47, 121227), (56, 121254), (80, 121335), (88, 121374), (104, 121449), (117, 121500), (119, 121509), (124, 121527), (129, 121560), (130, 121563),

Gene: Tyson_42 Start: 34026, Stop: 34442, Start Num: 20

Candidate Starts for Tyson_42:

(Start: 14 @34005 has 3 MA's), (Start: 20 @34026 has 39 MA's), (47, 34092), (Start: 55 @34113 has 11 MA's), (59, 34131), (69, 34170), (73, 34182), (88, 34239), (103, 34299), (120, 34365), (131, 34419),

Gene: UPIE_43 Start: 34009, Stop: 34425, Start Num: 20

Candidate Starts for UPIE_43:

(Start: 14 @33988 has 3 MA's), (Start: 20 @34009 has 39 MA's), (47, 34075), (Start: 55 @34096 has 11 MA's), (59, 34114), (69, 34153), (73, 34165), (88, 34222), (103, 34282), (131, 34402),

Gene: Vetricx_45 Start: 35363, Stop: 35779, Start Num: 20

Candidate Starts for Vetricx_45:

(Start: 17 @35354 has 10 MA's), (Start: 20 @35363 has 39 MA's), (Start: 55 @35450 has 11 MA's), (59, 35468), (66, 35495), (67, 35498), (88, 35573), (91, 35585), (118, 35693), (131, 35756),

Gene: Vorvolakos_75 Start: 38620, Stop: 38138, Start Num: 27

Candidate Starts for Vorvolakos_75:

(Start: 27 @38620 has 15 MA's), (53, 38548), (62, 38515), (86, 38437), (96, 38395), (122, 38287), (138, 38224), (149, 38182),

Gene: WRightOn_78 Start: 38385, Stop: 37942, Start Num: 23

Candidate Starts for WRightOn_78:

(11, 38442), (12, 38418), (Start: 23 @38385 has 3 MA's), (86, 38196), (114, 38082), (148, 37959),

Gene: Wamburgrxpress_43 Start: 34024, Stop: 34440, Start Num: 20

Candidate Starts for Wamburgrxpress_43:

(Start: 14 @34003 has 3 MA's), (Start: 20 @34024 has 39 MA's), (47, 34090), (Start: 55 @34111 has 11 MA's), (59, 34129), (69, 34168), (73, 34180), (88, 34237), (103, 34297), (131, 34417),

Gene: Weasels2_208 Start: 107565, Stop: 107978, Start Num: 36

Candidate Starts for Weasels2_208:

(Start: 36 @107565 has 4 MA's), (70, 107664), (86, 107721), (97, 107766), (101, 107805), (119, 107880),

Gene: Weasels2_18 Start: 5542, Stop: 5186, Start Num: 42

Candidate Starts for Weasels2_18:

(Start: 42 @5542 has 6 MA's), (62, 5473), (70, 5455), (129, 5224), (135, 5209), (140, 5200),

Gene: Weasels2_22 Start: 6969, Stop: 6571, Start Num: 38

Candidate Starts for Weasels2_22:

(Start: 38 @6969 has 3 MA's), (47, 6942), (72, 6867), (92, 6786), (107, 6723), (115, 6690), (123, 6657),

Gene: Weasels2_237 Start: 116136, Stop: 116522, Start Num: 36

Candidate Starts for Weasels2_237:

(35, 116130), (Start: 36 @116136 has 4 MA's), (84, 116286), (119, 116433), (132, 116493),

Gene: Whirlwind_43 Start: 35405, Stop: 35812, Start Num: 20

Candidate Starts for Whirlwind_43:

(Start: 14 @35384 has 3 MA's), (Start: 17 @35396 has 10 MA's), (Start: 20 @35405 has 39 MA's), (Start: 55 @35489 has 11 MA's), (59, 35507), (62, 35525), (66, 35534), (98, 35651), (131, 35789),

Gene: Wigglewigggle_45 Start: 35380, Stop: 35805, Start Num: 17

Candidate Starts for Wigglewigggle_45:

(Start: 17 @35380 has 10 MA's), (Start: 20 @35389 has 39 MA's), (Start: 55 @35476 has 11 MA's), (59, 35494), (66, 35521), (67, 35524), (88, 35599), (91, 35611), (118, 35719), (131, 35782),

Gene: Wilder_45 Start: 35362, Stop: 35778, Start Num: 20

Candidate Starts for Wilder_45:

(Start: 17 @35353 has 10 MA's), (Start: 20 @35362 has 39 MA's), (Start: 55 @35449 has 11 MA's), (59, 35467), (66, 35494), (67, 35497), (88, 35572), (91, 35584), (118, 35692), (131, 35755),

Gene: Winky_45 Start: 35347, Stop: 35772, Start Num: 17

Candidate Starts for Winky_45:

(Start: 17 @35347 has 10 MA's), (Start: 20 @35356 has 39 MA's), (Start: 55 @35443 has 11 MA's), (59, 35461), (66, 35488), (67, 35491), (88, 35566), (91, 35578), (118, 35686), (131, 35749),

Gene: Wyatt2_43 Start: 34025, Stop: 34441, Start Num: 20

Candidate Starts for Wyatt2_43:

(Start: 14 @34004 has 3 MA's), (Start: 20 @34025 has 39 MA's), (47, 34091), (Start: 55 @34112 has 11 MA's), (59, 34130), (69, 34169), (73, 34181), (88, 34238), (103, 34298), (131, 34418),

Gene: Yakult_64 Start: 44046, Stop: 44489, Start Num: 15

Candidate Starts for Yakult_64:

(Start: 15 @44046 has 2 MA's), (65, 44154), (75, 44181), (79, 44199), (88, 44241), (92, 44256), (94, 44262), (109, 44325), (122, 44382), (129, 44424),

Gene: Yeet_109 Start: 64277, Stop: 64597, Start Num: 41

Candidate Starts for Yeet_109:

(Start: 41 @64277 has 33 MA's), (54, 64316), (88, 64415), (102, 64472), (112, 64508), (121, 64538), (129, 64583),

Gene: Zakai_45 Start: 35614, Stop: 36030, Start Num: 20

Candidate Starts for Zakai_45:

(Start: 17 @35605 has 10 MA's), (Start: 20 @35614 has 39 MA's), (Start: 55 @35701 has 11 MA's), (59, 35719), (66, 35746), (67, 35749), (88, 35824), (91, 35836), (118, 35944), (131, 36007),

Gene: Zaria_43 Start: 34040, Stop: 34456, Start Num: 20

Candidate Starts for Zaria_43:

(Start: 14 @34019 has 3 MA's), (Start: 20 @34040 has 39 MA's), (47, 34106), (Start: 55 @34127 has 11 MA's), (59, 34145), (69, 34184), (73, 34196), (88, 34253), (103, 34313), (131, 34433),

Gene: Zeigle_74 Start: 38229, Stop: 37786, Start Num: 23

Candidate Starts for Zeigle_74:

(11, 38286), (12, 38262), (Start: 23 @38229 has 3 MA's), (86, 38040), (114, 37926), (148, 37803),

Gene: ZhongYanYuan_43 Start: 35304, Stop: 35633, Start Num: 55

Candidate Starts for ZhongYanYuan_43:

(Start: 17 @35208 has 10 MA's), (Start: 20 @35217 has 39 MA's), (Start: 55 @35304 has 11 MA's), (59, 35322), (66, 35349), (67, 35352), (88, 35430), (118, 35547), (131, 35610),

Gene: ZooBear_76 Start: 38999, Stop: 38496, Start Num: 27

Candidate Starts for ZooBear_76:

(Start: 27 @38999 has 15 MA's), (Start: 41 @38963 has 33 MA's), (53, 38927), (62, 38891), (74, 38858), (86, 38810), (95, 38771), (122, 38660), (126, 38636), (142, 38582),