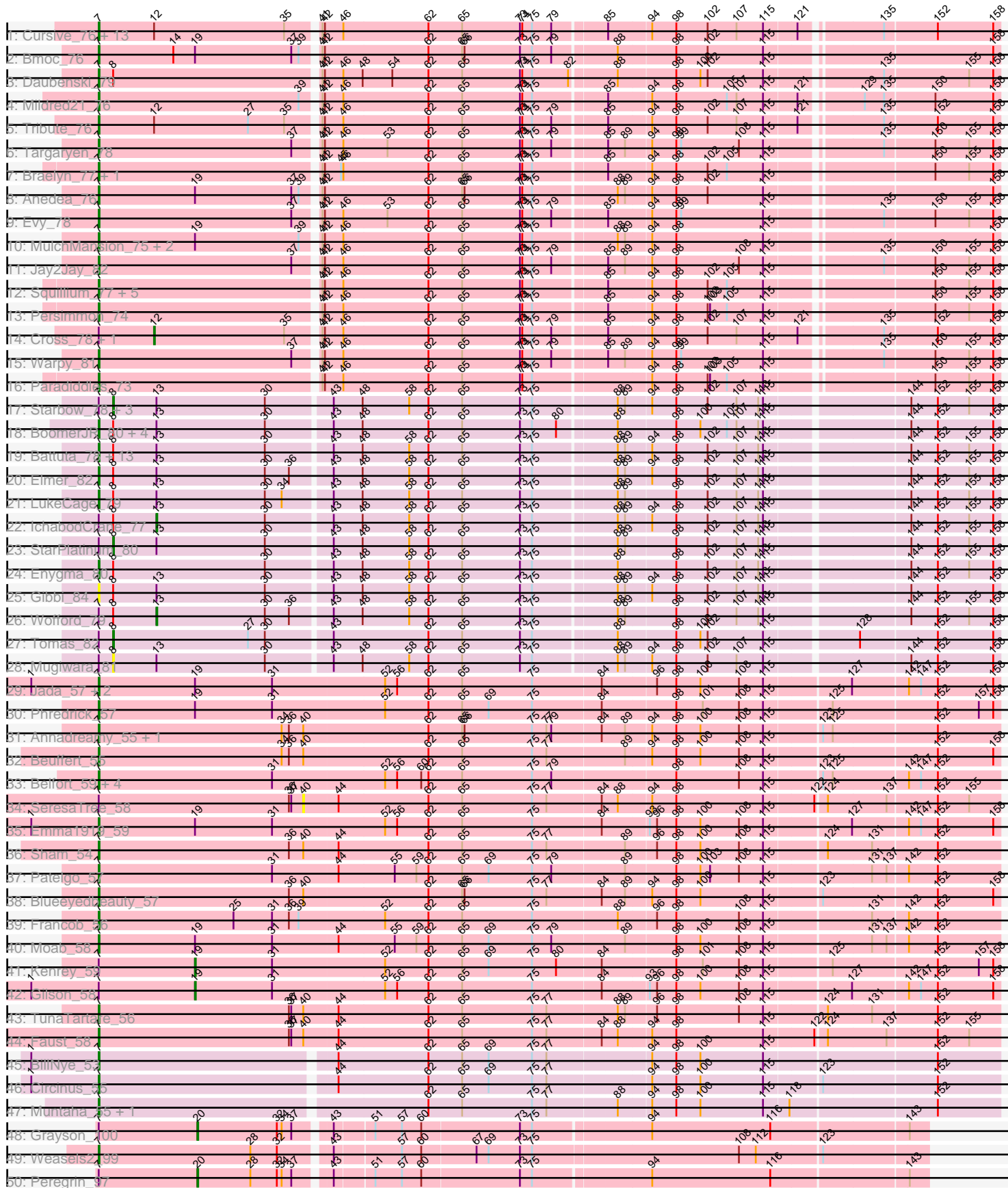
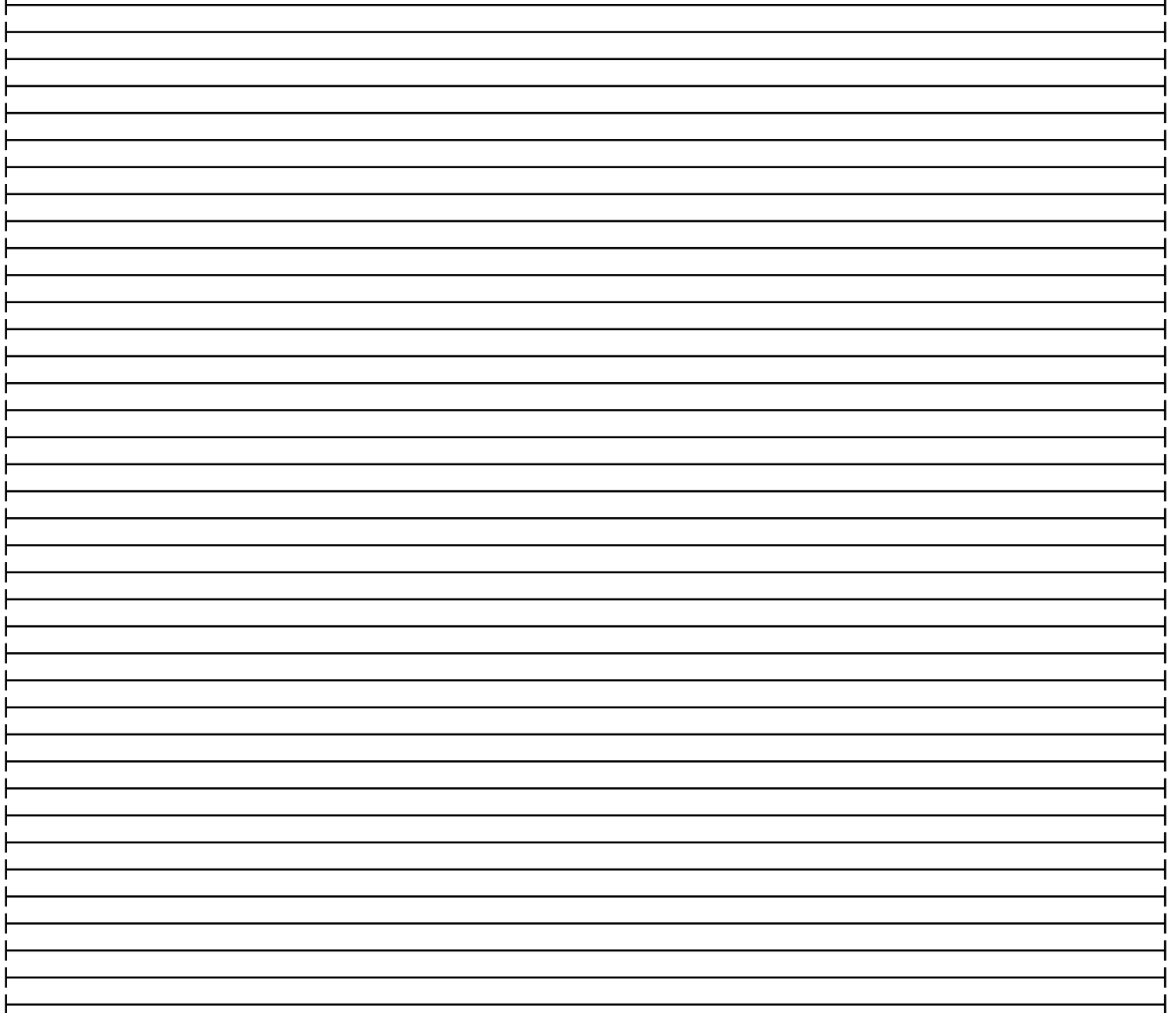
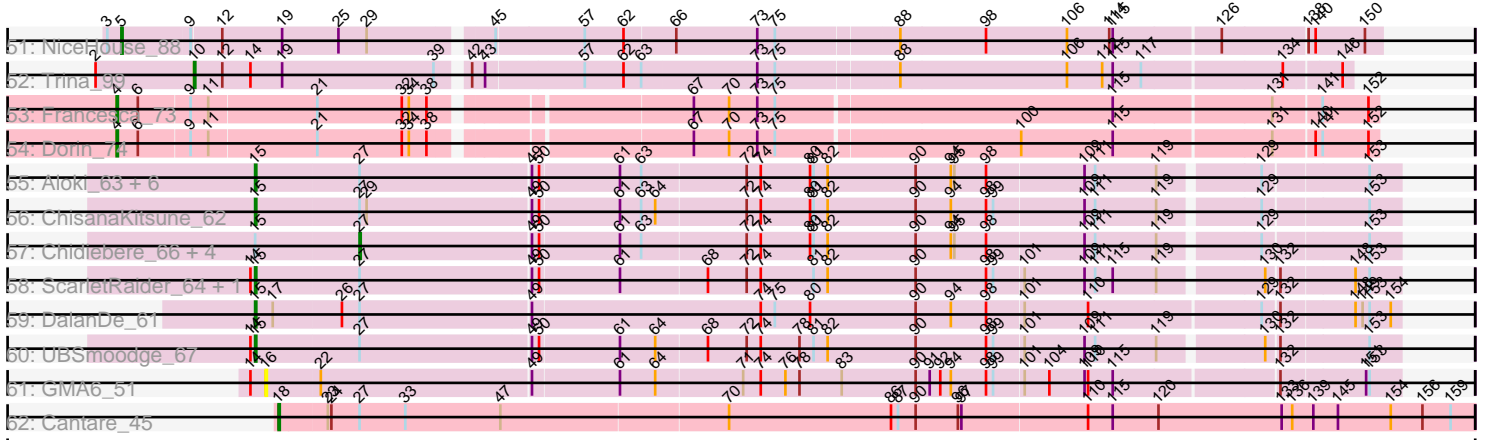


Pham 196379



Pham 196379



Note: Tracks are now grouped by subcluster and scaled. Switching in subcluster is indicated by changes in track color. Track scale is now set by default to display the region 30 bp upstream of start 1 to 30 bp downstream of the last possible start. If this default region is judged to be packed too tightly with annotated starts, the track will be further scaled to only show that region of the ORF with annotated starts. This action will be indicated by adding "Zoomed" to the title. For starts, yellow indicates the location of called starts comprised solely of Glimmer/GeneMark auto-annotations, green indicates the location of called starts with at least 1 manual gene annotation.

Pham 196379 Report

This analysis was run 12/09/24 on database version 580.

Pham number 196379 has 123 members, 13 are drafts.

Phages represented in each track:

- Track 1 : Cursive_76, EGole_79, HangryHippo_78, PacManQ_77, BlueOtter_78, Leo04_79, Larnav_78, Teutsch_78, Samisti12_78, Scheme_79, Lululemon_77, Pepperwood_78, Sushi23_77, Watermoore_78
- Track 2 : Bmoc_76
- Track 3 : Daubenski_79
- Track 4 : Mildred21_76
- Track 5 : Tribute_76
- Track 6 : Targaryen_78
- Track 7 : Braelyn_77, Navo_75
- Track 8 : Anedea_76
- Track 9 : Evy_78
- Track 10 : MulchMansion_75, LilMartin_75, Angela_74
- Track 11 : Jay2Jay_82
- Track 12 : Squillum_77, NootNoot_73, WhereRU_74, Liandry_76, Bartholomune_76, PinkiePie_76
- Track 13 : Persimmon_74
- Track 14 : Cross_78, Peebs_77
- Track 15 : Warpy_81
- Track 16 : Paradiddles_73
- Track 17 : Starbow_78, CeilingFan_82, Amabiko_80, Wipeout_77
- Track 18 : BoomerJR_80, Stanimal_80, Sollertia_80, Genie2_80, Yaboi_80
- Track 19 : Battuta_78, Birchlyn_77, Quarant19_79, SaltySpittoon_79, Bordeaux_78, Spelly_80, TomSawyer_78, Spilled_81, KentuckyRacer_80, Karimac_79, JimJam_80, PumpkinSpice_79, Jollison_79, MindFlayer_77
- Track 20 : Elmer_82
- Track 21 : LukeCage_79
- Track 22 : IchabodCrane_77
- Track 23 : StarPlatinum_80
- Track 24 : Enygma_80
- Track 25 : Gibbi_84
- Track 26 : Wofford_79
- Track 27 : Tomas_82
- Track 28 : Mugiwara_81
- Track 29 : Jada_57, MeganTheeKilla_56, Forrest_59
- Track 30 : Phredrick_57
- Track 31 : Annadreamy_55, Limpid_55
- Track 32 : Beuffert_55

- Track 33 : Belfort_59, Comrade_58, Karp_56, SparkleGoddess_58, Stigma_57
- Track 34 : SeresaTree_58
- Track 35 : Emma1919_59
- Track 36 : Sham_54
- Track 37 : Patelgo_57
- Track 38 : Blueeyedbeauty_57
- Track 39 : Francob_56
- Track 40 : Moab_58
- Track 41 : Kenrey_59
- Track 42 : Gilson_58
- Track 43 : TunaTartare_56
- Track 44 : Faust_58
- Track 45 : BillNye_53
- Track 46 : Circinus_55
- Track 47 : Muntaha_55, Wakanda_54
- Track 48 : Grayson_100
- Track 49 : Weasels2_99
- Track 50 : Peregrin_97
- Track 51 : NiceHouse_88
- Track 52 : Trina_99
- Track 53 : Francesca_73
- Track 54 : Dorin_74
- Track 55 : Alok_63, Gray_66, Kabocha_67, MintFritos_63, Pakusa_63, Oogie_65, Schomber_64
- Track 56 : ChisanaKitsune_62
- Track 57 : Chidiebere_66, Beted_65, Hanem_65, Lenoshki_65, Twin_63
- Track 58 : ScarletRaider_64, FlyingTortilla_65
- Track 59 : DalanDe_61
- Track 60 : UBSmoodge_67
- Track 61 : GMA6_51
- Track 62 : Cantare_45

Summary of Final Annotations (See graph section above for start numbers):

The start number called the most often in the published annotations is 7, it was called in 82 of the 110 non-draft genes in the pham.

Genes that call this "Most Annotated" start:

- Anedea_76, Angela_74, Annadreamy_55, Bartholomune_76, Battuta_78, Belfort_59, Beuffert_55, BillNye_53, Birchlyn_77, BlueOtter_78, Blueeyedbeauty_57, Bmoc_76, BoomerJR_80, Bordeaux_78, Braelyn_77, Circinus_55, Comrade_58, Cursive_76, Daubenski_79, EGole_79, Elmer_82, Emma1919_59, Enygma_80, Evy_78, Faust_58, Forrest_59, Francob_56, Genie2_80, Gibbi_84, HangryHippo_78, Jada_57, Jay2Jay_82, JimJam_80, Jollison_79, Karimac_79, Karp_56, KentuckyRacer_80, Larnav_78, Leo04_79, Liandry_76, LilMartin_75, Limpid_55, LukeCage_79, Lululemon_77, MeganTheeKilla_56, Mildred21_76, MindFlayer_77, Moab_58, MulchMansion_75, Muntaha_55, Navo_75, NootNoot_73, PacManQ_77, Paradiddles_73, Patelgo_57, Pepperwood_78, Persimmon_74, Phredrick_57, PinkiePie_76, PumpkinSpice_79, Quarant19_79, SaltySpittoon_79, Samisti12_78, Scheme_79, Sham_54, Sollertia_80, SparkleGoddess_58, Spelly_80, Spilled_81,

Squillium_77, Stanimal_80, Stigma_57, Sushi23_77, Targaryen_78, Teutsch_78, TomSawyer_78, Tribute_76, TunaTartare_56, Wakanda_54, Warpy_81, Watermoore_78, Weasels2_99, WhereRU_74, Yaboi_80,

Genes that have the "Most Annotated" start but do not call it:

- Amabiko_80, CeilingFan_82, Cross_78, Gilson_58, Grayson_100, IChabodCrane_77, Kenrey_59, Mugiwarra_81, Peebs_77, Peregrin_97, SeresaTree_58, StarPlatinum_80, Starbow_78, Tomas_82, Wipeout_77, Wofford_79,

Genes that do not have the "Most Annotated" start:

- Alok_i_63, Beted_65, Cantare_45, Chidiebere_66, ChisanaKitsune_62, DalanDe_61, Dorin_74, FlyingTortilla_65, Francesca_73, GMA6_51, Gray_66, Hanem_65, Kabocha_67, Lenoshki_65, MintFritos_63, NiceHouse_88, Oogie_65, Pakusa_63, ScarletRaider_64, Schomber_64, Trina_99, Twin_63, UBSmoodge_67,

Summary by start number:

Start 4:

- Found in 2 of 123 (1.6%) of genes in pham
- Manual Annotations of this start: 2 of 110
- Called 100.0% of time when present
- Phage (with cluster) where this start called: Dorin_74 (CG), Francesca_73 (CG),

Start 5:

- Found in 1 of 123 (0.8%) of genes in pham
- Manual Annotations of this start: 1 of 110
- Called 100.0% of time when present
- Phage (with cluster) where this start called: NiceHouse_88 (CE),

Start 7:

- Found in 100 of 123 (81.3%) of genes in pham
- Manual Annotations of this start: 82 of 110
- Called 84.0% of time when present
- Phage (with cluster) where this start called: Anedea_76 (BE1), Angela_74 (BE1), Annadreamy_55 (BK1), Bartholomune_76 (BE1), Battuta_78 (BE2), Belfort_59 (BK1), Beuffert_55 (BK1), BillNye_53 (BK2), Birchlyn_77 (BE2), BlueOtter_78 (BE1), Blueeyedbeauty_57 (BK1), Bmoc_76 (BE1), BoomerJR_80 (BE2), Bordeaux_78 (BE2), Braelyn_77 (BE1), Circinus_55 (BK2), Comrade_58 (BK1), Cursive_76 (BE1), Daubenski_79 (BE1), EGole_79 (BE1), Elmer_82 (BE2), Emma1919_59 (BK1), Enygma_80 (BE2), Evy_78 (BE1), Faust_58 (BK1), Forrest_59 (BK1), Francob_56 (BK1), Genie2_80 (BE2), Gibbi_84 (BE2), HangryHippo_78 (BE1), Jada_57 (BK1), Jay2Jay_82 (BE1), JimJam_80 (BE2), Jollison_79 (BE2), Karimac_79 (BE2), Karp_56 (BK1), KentuckyRacer_80 (BE2), Larnav_78 (BE1), Leo04_79 (BE1), Liandry_76 (BE1), LilMartin_75 (BE1), Limpid_55 (BK1), LukeCage_79 (BE2), Lululemon_77 (BE1), MeganTheeKilla_56 (BK1), Mildred21_76 (BE1), MindFlayer_77 (BE2), Moab_58 (BK1), MulchMansion_75 (BE1), Muntaha_55 (BK2), Navo_75 (BE1), NootNoot_73 (BE1), PacManQ_77 (BE1), Paradiddles_73 (BE1), Patelgo_57 (BK1), Pepperwood_78 (BE1), Persimmon_74 (BE1), Phredrick_57 (BK1), PinkiePie_76 (BE1), PumpkinSpice_79 (BE2), Quarant19_79 (BE2), SaltySpittoon_79 (BE2), Samisti12_78 (BE1), Scheme_79 (BE1), Sham_54 (BK1), Sollertia_80 (BE2), SparkleGoddess_58 (BK1), Spelly_80 (BE2), Spilled_81 (BE2), Squillium_77 (BE1), Stanimal_80 (BE2), Stigma_57 (BK1), Sushi23_77 (BE1), Targaryen_78 (BE1), Teutsch_78 (BE1), TomSawyer_78 (BE2), Tribute_76 (BE1),

TunaTartare_56 (BK1), Wakanda_54 (BK2), Warpy_81 (BE1), Watermoore_78 (BE1), Weasels2_99 (CB), WhereRU_74 (BE1), Yaboi_80 (BE2),

Start 8:

- Found in 33 of 123 (26.8%) of genes in pham
- Manual Annotations of this start: 5 of 110
- Called 21.2% of time when present
- Phage (with cluster) where this start called: Amabiko_80 (BE2), CeilingFan_82 (BE2), Mugiwara_81 (BE2), StarPlatinum_80 (BE2), Starbow_78 (BE2), Tomas_82 (BE2), Wipeout_77 (BE2),

Start 10:

- Found in 1 of 123 (0.8%) of genes in pham
- Manual Annotations of this start: 1 of 110
- Called 100.0% of time when present
- Phage (with cluster) where this start called: Trina_99 (CE),

Start 12:

- Found in 19 of 123 (15.4%) of genes in pham
- Manual Annotations of this start: 2 of 110
- Called 10.5% of time when present
- Phage (with cluster) where this start called: Cross_78 (BE1), Peebs_77 (BE1),

Start 13:

- Found in 30 of 123 (24.4%) of genes in pham
- Manual Annotations of this start: 2 of 110
- Called 6.7% of time when present
- Phage (with cluster) where this start called: IchabodCrane_77 (BE2), Wofford_79 (BE2),

Start 15:

- Found in 17 of 123 (13.8%) of genes in pham
- Manual Annotations of this start: 8 of 110
- Called 70.6% of time when present
- Phage (with cluster) where this start called: Alok_i_63 (DQ), ChisanaKitsune_62 (DQ), DalanDe_61 (DQ), FlyingTortilla_65 (DQ), Gray_66 (DQ), Kabocha_67 (DQ), MintFritos_63 (DQ), Oogie_65 (DQ), Pakusa_63 (DQ), ScarletRaider_64 (DQ), Schomber_64 (DQ), UBSmoodge_67 (DQ),

Start 16:

- Found in 1 of 123 (0.8%) of genes in pham
- No Manual Annotations of this start.
- Called 100.0% of time when present
- Phage (with cluster) where this start called: GMA6_51 (DQ),

Start 18:

- Found in 1 of 123 (0.8%) of genes in pham
- Manual Annotations of this start: 1 of 110
- Called 100.0% of time when present
- Phage (with cluster) where this start called: Cantare_45 (singleton),

Start 19:

- Found in 15 of 123 (12.2%) of genes in pham

- Manual Annotations of this start: 2 of 110
- Called 13.3% of time when present
- Phage (with cluster) where this start called: Gilson_58 (BK1), Kenrey_59 (BK1),

Start 20:

- Found in 2 of 123 (1.6%) of genes in pham
- Manual Annotations of this start: 2 of 110
- Called 100.0% of time when present
- Phage (with cluster) where this start called: Grayson_100 (CB), Peregrin_97 (CB),

Start 27:

- Found in 20 of 123 (16.3%) of genes in pham
- Manual Annotations of this start: 2 of 110
- Called 25.0% of time when present
- Phage (with cluster) where this start called: Beted_65 (DQ), Chidiebere_66 (DQ), Hanem_65 (DQ), Lenoski_65 (DQ), Twin_63 (DQ),

Start 40:

- Found in 8 of 123 (6.5%) of genes in pham
- No Manual Annotations of this start.
- Called 12.5% of time when present
- Phage (with cluster) where this start called: SeresaTree_58 (BK1),

Summary by clusters:

There are 9 clusters represented in this pham: singleton, CB, CG, CE, BK1, BK2, BE2, BE1, DQ,

Info for manual annotations of cluster BE1:

- Start number 7 was manually annotated 35 times for cluster BE1.
- Start number 12 was manually annotated 2 times for cluster BE1.

Info for manual annotations of cluster BE2:

- Start number 7 was manually annotated 22 times for cluster BE2.
- Start number 8 was manually annotated 5 times for cluster BE2.
- Start number 13 was manually annotated 2 times for cluster BE2.

Info for manual annotations of cluster BK1:

- Start number 7 was manually annotated 20 times for cluster BK1.
- Start number 19 was manually annotated 2 times for cluster BK1.

Info for manual annotations of cluster BK2:

- Start number 7 was manually annotated 4 times for cluster BK2.

Info for manual annotations of cluster CB:

- Start number 7 was manually annotated 1 time for cluster CB.
- Start number 20 was manually annotated 2 times for cluster CB.

Info for manual annotations of cluster CE:

- Start number 5 was manually annotated 1 time for cluster CE.
- Start number 10 was manually annotated 1 time for cluster CE.

Info for manual annotations of cluster CG:

- Start number 4 was manually annotated 2 times for cluster CG.

Info for manual annotations of cluster DQ:

- Start number 15 was manually annotated 8 times for cluster DQ.
- Start number 27 was manually annotated 2 times for cluster DQ.

Gene Information:

Gene: Alok_i_63 Start: 52730, Stop: 51792, Start Num: 15

Candidate Starts for Alok_i_63:

(Start: 15 @52730 has 8 MA's), (Start: 27 @52643 has 2 MA's), (49, 52502), (50, 52496), (61, 52430), (63, 52412), (72, 52325), (74, 52313), (80, 52271), (81, 52268), (82, 52256), (90, 52181), (94, 52151), (95, 52148), (98, 52121), (109, 52040), (111, 52031), (119, 51980), (129, 51902), (153, 51818),

Gene: Amabiko_80 Start: 56400, Stop: 57458, Start Num: 8

Candidate Starts for Amabiko_80:

(Start: 7 @56382 has 82 MA's), (Start: 8 @56400 has 5 MA's), (Start: 13 @56454 has 2 MA's), (30, 56589), (43, 56664), (48, 56700), (58, 56757), (62, 56781), (65, 56823), (73, 56895), (75, 56910), (88, 57006), (89, 57015), (94, 57045), (98, 57075), (102, 57114), (107, 57150), (113, 57177), (115, 57183), (144, 57348), (152, 57381), (155, 57420), (158, 57450),

Gene: Anedea_76 Start: 55980, Stop: 57044, Start Num: 7

Candidate Starts for Anedea_76:

(Start: 7 @55980 has 82 MA's), (Start: 19 @56100 has 2 MA's), (37, 56220), (39, 56229), (41, 56244), (42, 56247), (62, 56373), (65, 56415), (66, 56418), (73, 56487), (74, 56490), (75, 56502), (88, 56598), (89, 56607), (94, 56637), (98, 56667), (102, 56706), (115, 56775), (158, 57036),

Gene: Angela_74 Start: 55439, Stop: 56503, Start Num: 7

Candidate Starts for Angela_74:

(Start: 7 @55439 has 82 MA's), (Start: 19 @55559 has 2 MA's), (39, 55688), (41, 55703), (42, 55706), (46, 55727), (62, 55832), (65, 55874), (73, 55946), (74, 55949), (75, 55961), (88, 56057), (89, 56066), (94, 56096), (98, 56126), (115, 56234), (158, 56495),

Gene: Annadreamy_55 Start: 45380, Stop: 46477, Start Num: 7

Candidate Starts for Annadreamy_55:

(Start: 7 @45380 has 82 MA's), (34, 45608), (36, 45617), (40, 45635), (62, 45788), (65, 45830), (66, 45833), (75, 45917), (77, 45935), (79, 45941), (84, 46001), (89, 46028), (94, 46058), (98, 46088), (100, 46118), (108, 46166), (115, 46196), (123, 46262), (125, 46274), (152, 46400),

Gene: Bartholomune_76 Start: 55796, Stop: 56860, Start Num: 7

Candidate Starts for Bartholomune_76:

(Start: 7 @55796 has 82 MA's), (41, 56060), (42, 56063), (46, 56084), (62, 56189), (65, 56231), (73, 56303), (74, 56306), (75, 56318), (85, 56402), (94, 56453), (98, 56483), (102, 56522), (105, 56546), (115, 56591), (150, 56780), (155, 56822), (158, 56852),

Gene: Battuta_78 Start: 56356, Stop: 57432, Start Num: 7

Candidate Starts for Battuta_78:

(Start: 7 @56356 has 82 MA's), (Start: 8 @56374 has 5 MA's), (Start: 13 @56428 has 2 MA's), (30, 56563), (43, 56638), (48, 56674), (58, 56731), (62, 56755), (65, 56797), (73, 56869), (75, 56884), (88, 56980), (89, 56989), (94, 57019), (98, 57049), (102, 57088), (107, 57124), (113, 57151), (115, 57157), (144, 57322), (152, 57355), (155, 57394), (158, 57424),

Gene: Belfort_59 Start: 47917, Stop: 49014, Start Num: 7

Candidate Starts for Belfort_59:

(Start: 7 @47917 has 82 MA's), (31, 48133), (52, 48271), (56, 48286), (60, 48316), (62, 48325), (65, 48367), (75, 48454), (79, 48478), (98, 48625), (108, 48703), (115, 48733), (123, 48799), (125, 48811), (142, 48901), (147, 48916), (152, 48937),

Gene: Beted_65 Start: 54338, Stop: 53487, Start Num: 27

Candidate Starts for Beted_65:

(Start: 15 @54425 has 8 MA's), (Start: 27 @54338 has 2 MA's), (49, 54197), (50, 54191), (61, 54125), (63, 54107), (72, 54020), (74, 54008), (80, 53966), (81, 53963), (82, 53951), (90, 53876), (94, 53846), (95, 53843), (98, 53816), (109, 53735), (111, 53726), (119, 53675), (129, 53597), (153, 53513),

Gene: Beuffert_55 Start: 46518, Stop: 47615, Start Num: 7

Candidate Starts for Beuffert_55:

(Start: 7 @46518 has 82 MA's), (34, 46746), (36, 46755), (40, 46773), (62, 46926), (65, 46968), (75, 47055), (77, 47073), (89, 47166), (94, 47196), (98, 47226), (100, 47256), (108, 47304), (115, 47334), (152, 47538), (158, 47607),

Gene: BillNye_53 Start: 49370, Stop: 50452, Start Num: 7

Candidate Starts for BillNye_53:

(1, 49286), (Start: 7 @49370 has 82 MA's), (44, 49652), (62, 49763), (65, 49805), (69, 49838), (75, 49892), (77, 49910), (94, 50033), (98, 50063), (100, 50093), (115, 50171), (152, 50375),

Gene: Birchlyn_77 Start: 54239, Stop: 55315, Start Num: 7

Candidate Starts for Birchlyn_77:

(Start: 7 @54239 has 82 MA's), (Start: 8 @54257 has 5 MA's), (Start: 13 @54311 has 2 MA's), (30, 54446), (43, 54521), (48, 54557), (58, 54614), (62, 54638), (65, 54680), (73, 54752), (75, 54767), (88, 54863), (89, 54872), (94, 54902), (98, 54932), (102, 54971), (107, 55007), (113, 55034), (115, 55040), (144, 55205), (152, 55238), (155, 55277), (158, 55307),

Gene: BlueOtter_78 Start: 57170, Stop: 58234, Start Num: 7

Candidate Starts for BlueOtter_78:

(Start: 7 @57170 has 82 MA's), (Start: 12 @57239 has 2 MA's), (35, 57401), (41, 57434), (42, 57437), (46, 57458), (62, 57563), (65, 57605), (73, 57677), (74, 57680), (75, 57692), (79, 57716), (85, 57776), (94, 57827), (98, 57857), (102, 57896), (107, 57932), (115, 57965), (121, 58004), (135, 58094), (152, 58157), (158, 58226),

Gene: Blueeyedbeauty_57 Start: 45892, Stop: 46989, Start Num: 7

Candidate Starts for Blueeyedbeauty_57:

(Start: 7 @45892 has 82 MA's), (36, 46129), (40, 46147), (62, 46300), (65, 46342), (66, 46345), (75, 46429), (77, 46447), (84, 46513), (89, 46540), (94, 46570), (98, 46600), (100, 46630), (115, 46708), (123, 46774), (152, 46912), (158, 46981),

Gene: Bmoc_76 Start: 55817, Stop: 56881, Start Num: 7

Candidate Starts for Bmoc_76:

(Start: 7 @55817 has 82 MA's), (14, 55910), (Start: 19 @55937 has 2 MA's), (37, 56057), (39, 56066), (41, 56081), (42, 56084), (62, 56210), (65, 56252), (66, 56255), (73, 56324), (75, 56339), (79, 56363), (88, 56435), (98, 56504), (102, 56543), (115, 56612), (158, 56873),

Gene: BoomerJR_80 Start: 56222, Stop: 57298, Start Num: 7

Candidate Starts for BoomerJR_80:

(Start: 7 @56222 has 82 MA's), (Start: 8 @56240 has 5 MA's), (Start: 13 @56294 has 2 MA's), (30, 56429), (43, 56504), (48, 56540), (62, 56621), (65, 56663), (73, 56735), (75, 56750), (80, 56780), (88, 56846), (98, 56915), (100, 56945), (105, 56978), (107, 56990), (113, 57017), (115, 57023), (144, 57188), (152, 57221), (158, 57290),

Gene: Bordeaux_78 Start: 56511, Stop: 57587, Start Num: 7

Candidate Starts for Bordeaux_78:

(Start: 7 @56511 has 82 MA's), (Start: 8 @56529 has 5 MA's), (Start: 13 @56583 has 2 MA's), (30, 56718), (43, 56793), (48, 56829), (58, 56886), (62, 56910), (65, 56952), (73, 57024), (75, 57039), (88, 57135), (89, 57144), (94, 57174), (98, 57204), (102, 57243), (107, 57279), (113, 57306), (115, 57312), (144, 57477), (152, 57510), (155, 57549), (158, 57579),

Gene: Braelyn_77 Start: 56563, Stop: 57627, Start Num: 7

Candidate Starts for Braelyn_77:

(Start: 7 @56563 has 82 MA's), (41, 56827), (42, 56830), (45, 56848), (46, 56851), (62, 56956), (65, 56998), (73, 57070), (74, 57073), (75, 57085), (85, 57169), (94, 57220), (98, 57250), (102, 57289), (105, 57313), (115, 57358), (150, 57547), (155, 57589), (158, 57619),

Gene: Cantare_45 Start: 41518, Stop: 40511, Start Num: 18

Candidate Starts for Cantare_45:

(Start: 18 @41518 has 1 MA's), (23, 41479), (24, 41476), (Start: 27 @41452 has 2 MA's), (33, 41413), (47, 41332), (70, 41143), (86, 41005), (87, 40999), (90, 40984), (96, 40948), (97, 40945), (110, 40840), (115, 40819), (120, 40780), (133, 40675), (136, 40666), (139, 40648), (145, 40627), (154, 40582), (156, 40555), (159, 40531),

Gene: CeilingFan_82 Start: 56289, Stop: 57347, Start Num: 8

Candidate Starts for CeilingFan_82:

(Start: 7 @56271 has 82 MA's), (Start: 8 @56289 has 5 MA's), (Start: 13 @56343 has 2 MA's), (30, 56478), (43, 56553), (48, 56589), (58, 56646), (62, 56670), (65, 56712), (73, 56784), (75, 56799), (88, 56895), (89, 56904), (94, 56934), (98, 56964), (102, 57003), (107, 57039), (113, 57066), (115, 57072), (144, 57237), (152, 57270), (155, 57309), (158, 57339),

Gene: Chidiebere_66 Start: 53174, Stop: 52323, Start Num: 27

Candidate Starts for Chidiebere_66:

(Start: 15 @53261 has 8 MA's), (Start: 27 @53174 has 2 MA's), (49, 53033), (50, 53027), (61, 52961), (63, 52943), (72, 52856), (74, 52844), (80, 52802), (81, 52799), (82, 52787), (90, 52712), (94, 52682), (95, 52679), (98, 52652), (109, 52571), (111, 52562), (119, 52511), (129, 52433), (153, 52349),

Gene: ChisanaKitsune_62 Start: 52034, Stop: 51096, Start Num: 15

Candidate Starts for ChisanaKitsune_62:

(Start: 15 @52034 has 8 MA's), (Start: 27 @51947 has 2 MA's), (29, 51941), (49, 51806), (50, 51800), (61, 51734), (63, 51716), (64, 51704), (72, 51629), (74, 51617), (80, 51575), (81, 51572), (82, 51560), (90, 51485), (94, 51455), (98, 51425), (99, 51419), (109, 51344), (111, 51335), (119, 51284), (129, 51206), (153, 51122),

Gene: Circinus_55 Start: 49509, Stop: 50591, Start Num: 7

Candidate Starts for Circinus_55:

(1, 49425), (Start: 7 @49509 has 82 MA's), (44, 49791), (62, 49902), (65, 49944), (69, 49977), (75, 50031), (77, 50049), (94, 50172), (98, 50202), (100, 50232), (115, 50310), (123, 50376), (152, 50514),

Gene: Comrade_58 Start: 47533, Stop: 48630, Start Num: 7

Candidate Starts for Comrade_58:

(Start: 7 @47533 has 82 MA's), (31, 47749), (52, 47887), (56, 47902), (60, 47932), (62, 47941), (65, 47983), (75, 48070), (79, 48094), (98, 48241), (108, 48319), (115, 48349), (123, 48415), (125, 48427), (142, 48517), (147, 48532), (152, 48553),

Gene: Cross_78 Start: 57240, Stop: 58235, Start Num: 12

Candidate Starts for Cross_78:

(Start: 7 @57171 has 82 MA's), (Start: 12 @57240 has 2 MA's), (35, 57402), (41, 57435), (42, 57438), (46, 57459), (62, 57564), (65, 57606), (73, 57678), (74, 57681), (75, 57693), (79, 57717), (85, 57777), (94, 57828), (98, 57858), (102, 57897), (107, 57933), (115, 57966), (121, 58005), (135, 58095), (152, 58158), (158, 58227),

Gene: Cursive_76 Start: 56696, Stop: 57760, Start Num: 7

Candidate Starts for Cursive_76:

(Start: 7 @56696 has 82 MA's), (Start: 12 @56765 has 2 MA's), (35, 56927), (41, 56960), (42, 56963), (46, 56984), (62, 57089), (65, 57131), (73, 57203), (74, 57206), (75, 57218), (79, 57242), (85, 57302), (94, 57353), (98, 57383), (102, 57422), (107, 57458), (115, 57491), (121, 57530), (135, 57620), (152, 57683), (158, 57752),

Gene: DalanDe_61 Start: 55926, Stop: 54979, Start Num: 15

Candidate Starts for DalanDe_61:

(Start: 15 @55926 has 8 MA's), (17, 55911), (26, 55854), (Start: 27 @55839 has 2 MA's), (49, 55698), (74, 55506), (75, 55494), (80, 55464), (90, 55374), (94, 55344), (98, 55314), (101, 55284), (110, 55230), (129, 55089), (132, 55077), (148, 55017), (149, 55011), (153, 55005), (154, 54987),

Gene: Daubenski_79 Start: 56909, Stop: 57973, Start Num: 7

Candidate Starts for Daubenski_79:

(Start: 7 @56909 has 82 MA's), (Start: 8 @56927 has 5 MA's), (41, 57173), (42, 57176), (46, 57197), (48, 57221), (54, 57257), (62, 57302), (65, 57344), (73, 57416), (74, 57419), (75, 57431), (82, 57476), (88, 57527), (98, 57596), (100, 57626), (102, 57635), (115, 57704), (135, 57833), (155, 57935), (158, 57965),

Gene: Dorin_74 Start: 58073, Stop: 59086, Start Num: 4

Candidate Starts for Dorin_74:

(Start: 4 @58073 has 2 MA's), (6, 58091), (9, 58133), (11, 58148), (21, 58238), (32, 58310), (34, 58316), (38, 58331), (67, 58526), (70, 58556), (73, 58580), (75, 58595), (100, 58793), (115, 58871), (131, 59000), (140, 59033), (141, 59039), (152, 59078),

Gene: EGole_79 Start: 58117, Stop: 59181, Start Num: 7

Candidate Starts for EGole_79:

(Start: 7 @58117 has 82 MA's), (Start: 12 @58186 has 2 MA's), (35, 58348), (41, 58381), (42, 58384), (46, 58405), (62, 58510), (65, 58552), (73, 58624), (74, 58627), (75, 58639), (79, 58663), (85, 58723), (94, 58774), (98, 58804), (102, 58843), (107, 58879), (115, 58912), (121, 58951), (135, 59041), (152, 59104), (158, 59173),

Gene: Elmer_82 Start: 57463, Stop: 58539, Start Num: 7

Candidate Starts for Elmer_82:

(Start: 7 @57463 has 82 MA's), (Start: 8 @57481 has 5 MA's), (Start: 13 @57535 has 2 MA's), (30, 57670), (36, 57700), (43, 57745), (48, 57781), (58, 57838), (62, 57862), (65, 57904), (73, 57976), (75, 57991), (88, 58087), (89, 58096), (94, 58126), (98, 58156), (102, 58195), (107, 58231), (113, 58258), (115, 58264), (144, 58429), (152, 58462), (155, 58501), (158, 58531),

Gene: Emma1919_59 Start: 46318, Stop: 47415, Start Num: 7

Candidate Starts for Emma1919_59:

(1, 46234), (Start: 7 @46318 has 82 MA's), (Start: 19 @46438 has 2 MA's), (31, 46534), (52, 46672), (56, 46687), (62, 46726), (65, 46768), (75, 46855), (84, 46939), (93, 46993), (96, 47002), (98, 47026), (100, 47056), (108, 47104), (115, 47134), (127, 47236), (142, 47302), (147, 47317), (152, 47338), (158, 47407),

Gene: Enygma_80 Start: 58165, Stop: 59241, Start Num: 7

Candidate Starts for Enygma_80:

(Start: 7 @58165 has 82 MA's), (Start: 8 @58183 has 5 MA's), (30, 58372), (43, 58447), (48, 58483), (58, 58540), (62, 58564), (65, 58606), (73, 58678), (75, 58693), (88, 58789), (98, 58858), (102, 58897), (107, 58933), (113, 58960), (115, 58966), (144, 59131), (152, 59164), (155, 59203), (158, 59233),

Gene: Evy_78 Start: 57067, Stop: 58131, Start Num: 7

Candidate Starts for Evy_78:

(Start: 7 @57067 has 82 MA's), (37, 57307), (41, 57331), (42, 57334), (46, 57355), (53, 57409), (62, 57460), (65, 57502), (73, 57574), (74, 57577), (75, 57589), (79, 57613), (85, 57673), (94, 57724), (98, 57754), (99, 57760), (115, 57862), (135, 57991), (150, 58051), (155, 58093), (158, 58123),

Gene: Faust_58 Start: 47454, Stop: 48551, Start Num: 7

Candidate Starts for Faust_58:

(Start: 7 @47454 has 82 MA's), (36, 47691), (37, 47694), (40, 47709), (44, 47751), (62, 47862), (65, 47904), (75, 47991), (77, 48009), (84, 48075), (88, 48093), (94, 48132), (98, 48162), (115, 48270), (122, 48330), (124, 48342), (137, 48414), (152, 48474), (155, 48513),

Gene: FlyingTortilla_65 Start: 56355, Stop: 55417, Start Num: 15

Candidate Starts for FlyingTortilla_65:

(14, 56358), (Start: 15 @56355 has 8 MA's), (Start: 27 @56268 has 2 MA's), (49, 56127), (50, 56121), (61, 56055), (68, 55983), (72, 55950), (74, 55938), (81, 55893), (82, 55881), (90, 55806), (98, 55746), (99, 55740), (101, 55716), (109, 55665), (111, 55656), (115, 55641), (119, 55605), (130, 55524), (132, 55515), (148, 55455), (153, 55443),

Gene: Forrest_59 Start: 47015, Stop: 48112, Start Num: 7

Candidate Starts for Forrest_59:

(1, 46931), (Start: 7 @47015 has 82 MA's), (Start: 19 @47135 has 2 MA's), (31, 47231), (52, 47369), (56, 47384), (62, 47423), (65, 47465), (75, 47552), (84, 47636), (96, 47699), (98, 47723), (100, 47753), (108, 47801), (115, 47831), (127, 47933), (142, 47999), (147, 48014), (152, 48035), (158, 48104),

Gene: Francesca_73 Start: 58256, Stop: 59269, Start Num: 4

Candidate Starts for Francesca_73:

(Start: 4 @58256 has 2 MA's), (6, 58274), (9, 58316), (11, 58331), (21, 58421), (32, 58493), (34, 58499), (38, 58514), (67, 58709), (70, 58739), (73, 58763), (75, 58778), (115, 59054), (131, 59183), (141, 59222), (152, 59261),

Gene: Francob_56 Start: 46379, Stop: 47476, Start Num: 7

Candidate Starts for Francob_56:

(Start: 7 @46379 has 82 MA's), (25, 46547), (31, 46595), (36, 46616), (39, 46628), (52, 46733), (62, 46787), (65, 46829), (75, 46916), (88, 47018), (96, 47063), (98, 47087), (108, 47165), (115, 47195), (131, 47321), (142, 47363), (152, 47399),

Gene: GMA6_51 Start: 44602, Stop: 43667, Start Num: 16

Candidate Starts for GMA6_51:

(14, 44614), (16, 44602), (22, 44557), (49, 44383), (61, 44311), (64, 44281), (71, 44209), (74, 44194), (76, 44173), (78, 44161), (83, 44125), (90, 44062), (91, 44050), (92, 44041), (94, 44032), (98, 44002), (99, 43996), (101, 43972), (104, 43951), (109, 43921), (110, 43918), (115, 43897), (132, 43765), (151, 43696), (153, 43693),

Gene: Genie2_80 Start: 56336, Stop: 57412, Start Num: 7

Candidate Starts for Genie2_80:

(Start: 7 @56336 has 82 MA's), (Start: 8 @56354 has 5 MA's), (Start: 13 @56408 has 2 MA's), (30, 56543), (43, 56618), (48, 56654), (62, 56735), (65, 56777), (73, 56849), (75, 56864), (80, 56894), (88, 56960), (98, 57029), (100, 57059), (105, 57092), (107, 57104), (113, 57131), (115, 57137), (144, 57302), (152, 57335), (158, 57404),

Gene: Gibbi_84 Start: 56494, Stop: 57570, Start Num: 7

Candidate Starts for Gibbi_84:

(Start: 7 @56494 has 82 MA's), (Start: 8 @56512 has 5 MA's), (Start: 13 @56566 has 2 MA's), (30, 56701), (43, 56776), (48, 56812), (58, 56869), (62, 56893), (65, 56935), (73, 57007), (75, 57022), (88, 57118), (89, 57127), (94, 57157), (98, 57187), (102, 57226), (107, 57262), (113, 57289), (115, 57295), (144, 57460), (152, 57493), (158, 57562),

Gene: Gilson_58 Start: 46391, Stop: 47368, Start Num: 19

Candidate Starts for Gilson_58:

(1, 46187), (Start: 7 @46271 has 82 MA's), (Start: 19 @46391 has 2 MA's), (31, 46487), (52, 46625), (56, 46640), (62, 46679), (65, 46721), (75, 46808), (84, 46892), (93, 46946), (96, 46955), (98, 46979), (100, 47009), (108, 47057), (115, 47087), (127, 47189), (142, 47255), (147, 47270), (152, 47291), (158, 47360),

Gene: Gray_66 Start: 53261, Stop: 52323, Start Num: 15

Candidate Starts for Gray_66:

(Start: 15 @53261 has 8 MA's), (Start: 27 @53174 has 2 MA's), (49, 53033), (50, 53027), (61, 52961), (63, 52943), (72, 52856), (74, 52844), (80, 52802), (81, 52799), (82, 52787), (90, 52712), (94, 52682), (95, 52679), (98, 52652), (109, 52571), (111, 52562), (119, 52511), (129, 52433), (153, 52349),

Gene: Grayson_100 Start: 60346, Stop: 61206, Start Num: 20

Candidate Starts for Grayson_100:

(Start: 7 @60223 has 82 MA's), (Start: 20 @60346 has 2 MA's), (32, 60445), (34, 60451), (37, 60463), (43, 60499), (51, 60544), (57, 60577), (60, 60601), (73, 60721), (75, 60736), (94, 60874), (116, 61021), (143, 61183),

Gene: Hanem_65 Start: 52643, Stop: 51792, Start Num: 27

Candidate Starts for Hanem_65:

(Start: 15 @52730 has 8 MA's), (Start: 27 @52643 has 2 MA's), (49, 52502), (50, 52496), (61, 52430), (63, 52412), (72, 52325), (74, 52313), (80, 52271), (81, 52268), (82, 52256), (90, 52181), (94, 52151), (95, 52148), (98, 52121), (109, 52040), (111, 52031), (119, 51980), (129, 51902), (153, 51818),

Gene: HangryHippo_78 Start: 57170, Stop: 58234, Start Num: 7

Candidate Starts for HangryHippo_78:

(Start: 7 @57170 has 82 MA's), (Start: 12 @57239 has 2 MA's), (35, 57401), (41, 57434), (42, 57437), (46, 57458), (62, 57563), (65, 57605), (73, 57677), (74, 57680), (75, 57692), (79, 57716), (85, 57776), (94, 57827), (98, 57857), (102, 57896), (107, 57932), (115, 57965), (121, 58004), (135, 58094), (152, 58157), (158, 58226),

Gene: IchabodCrane_77 Start: 56155, Stop: 57159, Start Num: 13

Candidate Starts for IchabodCrane_77:

(Start: 7 @56083 has 82 MA's), (Start: 8 @56101 has 5 MA's), (Start: 13 @56155 has 2 MA's), (30, 56290), (43, 56365), (48, 56401), (58, 56458), (62, 56482), (65, 56524), (73, 56596), (75, 56611), (88, 56707), (89, 56716), (94, 56746), (98, 56776), (102, 56815), (107, 56851), (113, 56878), (115, 56884), (144, 57049), (152, 57082), (155, 57121), (158, 57151),

Gene: Jada_57 Start: 46197, Stop: 47294, Start Num: 7

Candidate Starts for Jada_57:

(1, 46113), (Start: 7 @46197 has 82 MA's), (Start: 19 @46317 has 2 MA's), (31, 46413), (52, 46551), (56, 46566), (62, 46605), (65, 46647), (75, 46734), (84, 46818), (96, 46881), (98, 46905), (100, 46935), (108, 46983), (115, 47013), (127, 47115), (142, 47181), (147, 47196), (152, 47217), (158, 47286),

Gene: Jay2Jay_82 Start: 57920, Stop: 58984, Start Num: 7

Candidate Starts for Jay2Jay_82:

(Start: 7 @57920 has 82 MA's), (37, 58160), (41, 58184), (42, 58187), (46, 58208), (62, 58313), (65, 58355), (73, 58427), (74, 58430), (75, 58442), (79, 58466), (85, 58526), (89, 58547), (94, 58577), (98, 58607), (108, 58685), (115, 58715), (135, 58844), (150, 58904), (155, 58946), (158, 58976),

Gene: JimJam_80 Start: 56457, Stop: 57533, Start Num: 7

Candidate Starts for JimJam_80:

(Start: 7 @56457 has 82 MA's), (Start: 8 @56475 has 5 MA's), (Start: 13 @56529 has 2 MA's), (30, 56664), (43, 56739), (48, 56775), (58, 56832), (62, 56856), (65, 56898), (73, 56970), (75, 56985), (88, 57081), (89, 57090), (94, 57120), (98, 57150), (102, 57189), (107, 57225), (113, 57252), (115, 57258), (144, 57423), (152, 57456), (155, 57495), (158, 57525),

Gene: Jollison_79 Start: 56339, Stop: 57415, Start Num: 7

Candidate Starts for Jollison_79:

(Start: 7 @56339 has 82 MA's), (Start: 8 @56357 has 5 MA's), (Start: 13 @56411 has 2 MA's), (30, 56546), (43, 56621), (48, 56657), (58, 56714), (62, 56738), (65, 56780), (73, 56852), (75, 56867), (88, 56963), (89, 56972), (94, 57002), (98, 57032), (102, 57071), (107, 57107), (113, 57134), (115, 57140), (144, 57305), (152, 57338), (155, 57377), (158, 57407),

Gene: Kabocha_67 Start: 54073, Stop: 53135, Start Num: 15

Candidate Starts for Kabocha_67:

(Start: 15 @54073 has 8 MA's), (Start: 27 @53986 has 2 MA's), (49, 53845), (50, 53839), (61, 53773), (63, 53755), (72, 53668), (74, 53656), (80, 53614), (81, 53611), (82, 53599), (90, 53524), (94, 53494), (95, 53491), (98, 53464), (109, 53383), (111, 53374), (119, 53323), (129, 53245), (153, 53161),

Gene: Karimac_79 Start: 56488, Stop: 57564, Start Num: 7

Candidate Starts for Karimac_79:

(Start: 7 @56488 has 82 MA's), (Start: 8 @56506 has 5 MA's), (Start: 13 @56560 has 2 MA's), (30, 56695), (43, 56770), (48, 56806), (58, 56863), (62, 56887), (65, 56929), (73, 57001), (75, 57016), (88, 57112), (89, 57121), (94, 57151), (98, 57181), (102, 57220), (107, 57256), (113, 57283), (115, 57289), (144, 57454), (152, 57487), (155, 57526), (158, 57556),

Gene: Karp_56 Start: 47132, Stop: 48229, Start Num: 7

Candidate Starts for Karp_56:

(Start: 7 @47132 has 82 MA's), (31, 47348), (52, 47486), (56, 47501), (60, 47531), (62, 47540), (65, 47582), (75, 47669), (79, 47693), (98, 47840), (108, 47918), (115, 47948), (123, 48014), (125, 48026), (142, 48116), (147, 48131), (152, 48152),

Gene: Kenrey_59 Start: 46586, Stop: 47563, Start Num: 19

Candidate Starts for Kenrey_59:

(Start: 7 @46466 has 82 MA's), (Start: 19 @46586 has 2 MA's), (31, 46682), (52, 46820), (62, 46874), (65, 46916), (69, 46949), (75, 47003), (80, 47033), (84, 47087), (98, 47174), (101, 47207), (108, 47252), (115, 47282), (125, 47360), (152, 47486), (157, 47537), (158, 47555),

Gene: KentuckyRacer_80 Start: 56272, Stop: 57348, Start Num: 7

Candidate Starts for KentuckyRacer_80:

(Start: 7 @56272 has 82 MA's), (Start: 8 @56290 has 5 MA's), (Start: 13 @56344 has 2 MA's), (30, 56479), (43, 56554), (48, 56590), (58, 56647), (62, 56671), (65, 56713), (73, 56785), (75, 56800), (88, 56896), (89, 56905), (94, 56935), (98, 56965), (102, 57004), (107, 57040), (113, 57067), (115, 57073), (144, 57238), (152, 57271), (155, 57310), (158, 57340),

Gene: Larnav_78 Start: 57155, Stop: 58219, Start Num: 7

Candidate Starts for Larnav_78:

(Start: 7 @57155 has 82 MA's), (Start: 12 @57224 has 2 MA's), (35, 57386), (41, 57419), (42, 57422), (46, 57443), (62, 57548), (65, 57590), (73, 57662), (74, 57665), (75, 57677), (79, 57701), (85, 57761), (94, 57812), (98, 57842), (102, 57881), (107, 57917), (115, 57950), (121, 57989), (135, 58079), (152, 58142), (158, 58211),

Gene: Lenoshki_65 Start: 54338, Stop: 53487, Start Num: 27

Candidate Starts for Lenoshki_65:

(Start: 15 @54425 has 8 MA's), (Start: 27 @54338 has 2 MA's), (49, 54197), (50, 54191), (61, 54125), (63, 54107), (72, 54020), (74, 54008), (80, 53966), (81, 53963), (82, 53951), (90, 53876), (94, 53846), (95, 53843), (98, 53816), (109, 53735), (111, 53726), (119, 53675), (129, 53597), (153, 53513),

Gene: Leo04_79 Start: 57670, Stop: 58734, Start Num: 7

Candidate Starts for Leo04_79:

(Start: 7 @57670 has 82 MA's), (Start: 12 @57739 has 2 MA's), (35, 57901), (41, 57934), (42, 57937), (46, 57958), (62, 58063), (65, 58105), (73, 58177), (74, 58180), (75, 58192), (79, 58216), (85, 58276), (94, 58327), (98, 58357), (102, 58396), (107, 58432), (115, 58465), (121, 58504), (135, 58594), (152, 58657), (158, 58726),

Gene: Liandry_76 Start: 56545, Stop: 57609, Start Num: 7

Candidate Starts for Liandry_76:

(Start: 7 @56545 has 82 MA's), (41, 56809), (42, 56812), (46, 56833), (62, 56938), (65, 56980), (73, 57052), (74, 57055), (75, 57067), (85, 57151), (94, 57202), (98, 57232), (102, 57271), (105, 57295), (115, 57340), (150, 57529), (155, 57571), (158, 57601),

Gene: LilMartin_75 Start: 55387, Stop: 56451, Start Num: 7

Candidate Starts for LilMartin_75:

(Start: 7 @55387 has 82 MA's), (Start: 19 @55507 has 2 MA's), (39, 55636), (41, 55651), (42, 55654), (46, 55675), (62, 55780), (65, 55822), (73, 55894), (74, 55897), (75, 55909), (88, 56005), (89, 56014), (94, 56044), (98, 56074), (115, 56182), (158, 56443),

Gene: Limpid_55 Start: 45379, Stop: 46476, Start Num: 7

Candidate Starts for Limpid_55:

(Start: 7 @45379 has 82 MA's), (34, 45607), (36, 45616), (40, 45634), (62, 45787), (65, 45829), (66, 45832), (75, 45916), (77, 45934), (79, 45940), (84, 46000), (89, 46027), (94, 46057), (98, 46087), (100, 46117), (108, 46165), (115, 46195), (123, 46261), (125, 46273), (152, 46399),

Gene: LukeCage_79 Start: 56251, Stop: 57327, Start Num: 7

Candidate Starts for LukeCage_79:

(Start: 7 @56251 has 82 MA's), (Start: 8 @56269 has 5 MA's), (Start: 13 @56323 has 2 MA's), (30, 56458), (34, 56479), (43, 56533), (48, 56569), (58, 56626), (62, 56650), (65, 56692), (73, 56764), (75,

56779), (88, 56875), (89, 56884), (98, 56944), (102, 56983), (107, 57019), (113, 57046), (115, 57052), (144, 57217), (152, 57250), (155, 57289), (158, 57319),

Gene: Lululemon_77 Start: 56551, Stop: 57615, Start Num: 7

Candidate Starts for Lululemon_77:

(Start: 7 @56551 has 82 MA's), (Start: 12 @56620 has 2 MA's), (35, 56782), (41, 56815), (42, 56818), (46, 56839), (62, 56944), (65, 56986), (73, 57058), (74, 57061), (75, 57073), (79, 57097), (85, 57157), (94, 57208), (98, 57238), (102, 57277), (107, 57313), (115, 57346), (121, 57385), (135, 57475), (152, 57538), (158, 57607),

Gene: MeganTheeKilla_56 Start: 45632, Stop: 46729, Start Num: 7

Candidate Starts for MeganTheeKilla_56:

(1, 45548), (Start: 7 @45632 has 82 MA's), (Start: 19 @45752 has 2 MA's), (31, 45848), (52, 45986), (56, 46001), (62, 46040), (65, 46082), (75, 46169), (84, 46253), (96, 46316), (98, 46340), (100, 46370), (108, 46418), (115, 46448), (127, 46550), (142, 46616), (147, 46631), (152, 46652), (158, 46721),

Gene: Mildred21_76 Start: 55591, Stop: 56655, Start Num: 7

Candidate Starts for Mildred21_76:

(Start: 7 @55591 has 82 MA's), (39, 55840), (41, 55855), (42, 55858), (46, 55879), (62, 55984), (65, 56026), (73, 56098), (74, 56101), (75, 56113), (85, 56197), (94, 56248), (98, 56278), (105, 56341), (107, 56353), (115, 56386), (121, 56425), (129, 56491), (135, 56515), (150, 56575), (158, 56647),

Gene: MindFlayer_77 Start: 55990, Stop: 57066, Start Num: 7

Candidate Starts for MindFlayer_77:

(Start: 7 @55990 has 82 MA's), (Start: 8 @56008 has 5 MA's), (Start: 13 @56062 has 2 MA's), (30, 56197), (43, 56272), (48, 56308), (58, 56365), (62, 56389), (65, 56431), (73, 56503), (75, 56518), (88, 56614), (89, 56623), (94, 56653), (98, 56683), (102, 56722), (107, 56758), (113, 56785), (115, 56791), (144, 56956), (152, 56989), (155, 57028), (158, 57058),

Gene: MintFritos_63 Start: 52731, Stop: 51793, Start Num: 15

Candidate Starts for MintFritos_63:

(Start: 15 @52731 has 8 MA's), (Start: 27 @52644 has 2 MA's), (49, 52503), (50, 52497), (61, 52431), (63, 52413), (72, 52326), (74, 52314), (80, 52272), (81, 52269), (82, 52257), (90, 52182), (94, 52152), (95, 52149), (98, 52122), (109, 52041), (111, 52032), (119, 51981), (129, 51903), (153, 51819),

Gene: Moab_58 Start: 47488, Stop: 48585, Start Num: 7

Candidate Starts for Moab_58:

(Start: 7 @47488 has 82 MA's), (Start: 19 @47608 has 2 MA's), (31, 47704), (44, 47785), (55, 47854), (59, 47881), (62, 47896), (65, 47938), (69, 47971), (75, 48025), (79, 48049), (89, 48136), (98, 48196), (100, 48226), (108, 48274), (115, 48304), (131, 48430), (137, 48448), (142, 48472), (152, 48508),

Gene: Mugiwara_81 Start: 56768, Stop: 57826, Start Num: 8

Candidate Starts for Mugiwara_81:

(Start: 7 @56750 has 82 MA's), (Start: 8 @56768 has 5 MA's), (Start: 13 @56822 has 2 MA's), (30, 56957), (43, 57032), (48, 57068), (58, 57125), (62, 57149), (65, 57191), (73, 57263), (75, 57278), (88, 57374), (89, 57383), (94, 57413), (98, 57443), (102, 57482), (107, 57518), (115, 57551), (144, 57716), (152, 57749), (158, 57818),

Gene: MulchMansion_75 Start: 55387, Stop: 56451, Start Num: 7

Candidate Starts for MulchMansion_75:

(Start: 7 @55387 has 82 MA's), (Start: 19 @55507 has 2 MA's), (39, 55636), (41, 55651), (42, 55654), (46, 55675), (62, 55780), (65, 55822), (73, 55894), (74, 55897), (75, 55909), (88, 56005), (89, 56014),

(94, 56044), (98, 56074), (115, 56182), (158, 56443),

Gene: Muntaha_55 Start: 47745, Stop: 48827, Start Num: 7

Candidate Starts for Muntaha_55:

(Start: 7 @47745 has 82 MA's), (62, 48138), (65, 48180), (75, 48267), (77, 48285), (88, 48369), (94, 48408), (98, 48438), (100, 48468), (115, 48546), (118, 48576), (152, 48750),

Gene: Navo_75 Start: 56467, Stop: 57531, Start Num: 7

Candidate Starts for Navo_75:

(Start: 7 @56467 has 82 MA's), (41, 56731), (42, 56734), (45, 56752), (46, 56755), (62, 56860), (65, 56902), (73, 56974), (74, 56977), (75, 56989), (85, 57073), (94, 57124), (98, 57154), (102, 57193), (105, 57217), (115, 57262), (150, 57451), (155, 57493), (158, 57523),

Gene: NiceHouse_88 Start: 62950, Stop: 63975, Start Num: 5

Candidate Starts for NiceHouse_88:

(3, 62938), (Start: 5 @62950 has 1 MA's), (9, 63007), (Start: 12 @63031 has 2 MA's), (Start: 19 @63082 has 2 MA's), (25, 63130), (29, 63154), (45, 63247), (57, 63319), (62, 63352), (66, 63394), (73, 63463), (75, 63478), (88, 63577), (98, 63649), (106, 63718), (114, 63754), (115, 63757), (126, 63844), (138, 63913), (140, 63919), (150, 63961),

Gene: NootNoot_73 Start: 55459, Stop: 56523, Start Num: 7

Candidate Starts for NootNoot_73:

(Start: 7 @55459 has 82 MA's), (41, 55723), (42, 55726), (46, 55747), (62, 55852), (65, 55894), (73, 55966), (74, 55969), (75, 55981), (85, 56065), (94, 56116), (98, 56146), (102, 56185), (105, 56209), (115, 56254), (150, 56443), (155, 56485), (158, 56515),

Gene: Oogie_65 Start: 54451, Stop: 53513, Start Num: 15

Candidate Starts for Oogie_65:

(Start: 15 @54451 has 8 MA's), (Start: 27 @54364 has 2 MA's), (49, 54223), (50, 54217), (61, 54151), (63, 54133), (72, 54046), (74, 54034), (80, 53992), (81, 53989), (82, 53977), (90, 53902), (94, 53872), (95, 53869), (98, 53842), (109, 53761), (111, 53752), (119, 53701), (129, 53623), (153, 53539),

Gene: PacManQ_77 Start: 56551, Stop: 57615, Start Num: 7

Candidate Starts for PacManQ_77:

(Start: 7 @56551 has 82 MA's), (Start: 12 @56620 has 2 MA's), (35, 56782), (41, 56815), (42, 56818), (46, 56839), (62, 56944), (65, 56986), (73, 57058), (74, 57061), (75, 57073), (79, 57097), (85, 57157), (94, 57208), (98, 57238), (102, 57277), (107, 57313), (115, 57346), (121, 57385), (135, 57475), (152, 57538), (158, 57607),

Gene: Pakusa_63 Start: 52472, Stop: 51534, Start Num: 15

Candidate Starts for Pakusa_63:

(Start: 15 @52472 has 8 MA's), (Start: 27 @52385 has 2 MA's), (49, 52244), (50, 52238), (61, 52172), (63, 52154), (72, 52067), (74, 52055), (80, 52013), (81, 52010), (82, 51998), (90, 51923), (94, 51893), (95, 51890), (98, 51863), (109, 51782), (111, 51773), (119, 51722), (129, 51644), (153, 51560),

Gene: Paradiddles_73 Start: 55723, Stop: 56787, Start Num: 7

Candidate Starts for Paradiddles_73:

(Start: 7 @55723 has 82 MA's), (41, 55987), (42, 55990), (46, 56011), (62, 56116), (65, 56158), (73, 56230), (74, 56233), (75, 56245), (94, 56380), (98, 56410), (102, 56449), (103, 56452), (105, 56473), (115, 56518), (150, 56707), (155, 56749), (158, 56779),

Gene: Patelgo_57 Start: 47675, Stop: 48772, Start Num: 7

Candidate Starts for Patelgo_57:

(Start: 7 @47675 has 82 MA's), (31, 47891), (44, 47972), (55, 48041), (59, 48068), (62, 48083), (65, 48125), (69, 48158), (75, 48212), (79, 48236), (89, 48323), (98, 48383), (100, 48413), (103, 48425), (108, 48461), (115, 48491), (131, 48617), (137, 48635), (142, 48659), (152, 48695),

Gene: Peebs_77 Start: 56974, Stop: 57969, Start Num: 12

Candidate Starts for Peebs_77:

(Start: 7 @56905 has 82 MA's), (Start: 12 @56974 has 2 MA's), (35, 57136), (41, 57169), (42, 57172), (46, 57193), (62, 57298), (65, 57340), (73, 57412), (74, 57415), (75, 57427), (79, 57451), (85, 57511), (94, 57562), (98, 57592), (102, 57631), (107, 57667), (115, 57700), (121, 57739), (135, 57829), (152, 57892), (158, 57961),

Gene: Pepperwood_78 Start: 57038, Stop: 58102, Start Num: 7

Candidate Starts for Pepperwood_78:

(Start: 7 @57038 has 82 MA's), (Start: 12 @57107 has 2 MA's), (35, 57269), (41, 57302), (42, 57305), (46, 57326), (62, 57431), (65, 57473), (73, 57545), (74, 57548), (75, 57560), (79, 57584), (85, 57644), (94, 57695), (98, 57725), (102, 57764), (107, 57800), (115, 57833), (121, 57872), (135, 57962), (152, 58025), (158, 58094),

Gene: Peregrin_97 Start: 58713, Stop: 59573, Start Num: 20

Candidate Starts for Peregrin_97:

(Start: 7 @58590 has 82 MA's), (Start: 20 @58713 has 2 MA's), (28, 58779), (32, 58812), (34, 58818), (37, 58830), (43, 58866), (51, 58911), (57, 58944), (60, 58968), (73, 59088), (75, 59103), (94, 59241), (116, 59388), (143, 59550),

Gene: Persimmon_74 Start: 55392, Stop: 56456, Start Num: 7

Candidate Starts for Persimmon_74:

(Start: 7 @55392 has 82 MA's), (41, 55656), (42, 55659), (46, 55680), (62, 55785), (65, 55827), (73, 55899), (74, 55902), (75, 55914), (85, 55998), (94, 56049), (98, 56079), (102, 56118), (103, 56121), (105, 56142), (115, 56187), (150, 56376), (155, 56418), (158, 56448),

Gene: Phredrick_57 Start: 45537, Stop: 46634, Start Num: 7

Candidate Starts for Phredrick_57:

(Start: 7 @45537 has 82 MA's), (Start: 19 @45657 has 2 MA's), (31, 45753), (52, 45891), (62, 45945), (65, 45987), (69, 46020), (75, 46074), (84, 46158), (98, 46245), (101, 46278), (108, 46323), (115, 46353), (125, 46431), (152, 46557), (157, 46608), (158, 46626),

Gene: PinkiePie_76 Start: 56545, Stop: 57609, Start Num: 7

Candidate Starts for PinkiePie_76:

(Start: 7 @56545 has 82 MA's), (41, 56809), (42, 56812), (46, 56833), (62, 56938), (65, 56980), (73, 57052), (74, 57055), (75, 57067), (85, 57151), (94, 57202), (98, 57232), (102, 57271), (105, 57295), (115, 57340), (150, 57529), (155, 57571), (158, 57601),

Gene: PumpkinSpice_79 Start: 56382, Stop: 57458, Start Num: 7

Candidate Starts for PumpkinSpice_79:

(Start: 7 @56382 has 82 MA's), (Start: 8 @56400 has 5 MA's), (Start: 13 @56454 has 2 MA's), (30, 56589), (43, 56664), (48, 56700), (58, 56757), (62, 56781), (65, 56823), (73, 56895), (75, 56910), (88, 57006), (89, 57015), (94, 57045), (98, 57075), (102, 57114), (107, 57150), (113, 57177), (115, 57183), (144, 57348), (152, 57381), (155, 57420), (158, 57450),

Gene: Quaran19_79 Start: 56373, Stop: 57449, Start Num: 7

Candidate Starts for Quaran19_79:

(Start: 7 @56373 has 82 MA's), (Start: 8 @56391 has 5 MA's), (Start: 13 @56445 has 2 MA's), (30, 56580), (43, 56655), (48, 56691), (58, 56748), (62, 56772), (65, 56814), (73, 56886), (75, 56901), (88,

56997), (89, 57006), (94, 57036), (98, 57066), (102, 57105), (107, 57141), (113, 57168), (115, 57174), (144, 57339), (152, 57372), (155, 57411), (158, 57441),

Gene: SaltySpittoon_79 Start: 56382, Stop: 57458, Start Num: 7

Candidate Starts for SaltySpittoon_79:

(Start: 7 @56382 has 82 MA's), (Start: 8 @56400 has 5 MA's), (Start: 13 @56454 has 2 MA's), (30, 56589), (43, 56664), (48, 56700), (58, 56757), (62, 56781), (65, 56823), (73, 56895), (75, 56910), (88, 57006), (89, 57015), (94, 57045), (98, 57075), (102, 57114), (107, 57150), (113, 57177), (115, 57183), (144, 57348), (152, 57381), (155, 57420), (158, 57450),

Gene: Samisti12_78 Start: 58348, Stop: 59412, Start Num: 7

Candidate Starts for Samisti12_78:

(Start: 7 @58348 has 82 MA's), (Start: 12 @58417 has 2 MA's), (35, 58579), (41, 58612), (42, 58615), (46, 58636), (62, 58741), (65, 58783), (73, 58855), (74, 58858), (75, 58870), (79, 58894), (85, 58954), (94, 59005), (98, 59035), (102, 59074), (107, 59110), (115, 59143), (121, 59182), (135, 59272), (152, 59335), (158, 59404),

Gene: ScarletRaider_64 Start: 55642, Stop: 54704, Start Num: 15

Candidate Starts for ScarletRaider_64:

(14, 55645), (Start: 15 @55642 has 8 MA's), (Start: 27 @55555 has 2 MA's), (49, 55414), (50, 55408), (61, 55342), (68, 55270), (72, 55237), (74, 55225), (81, 55180), (82, 55168), (90, 55093), (98, 55033), (99, 55027), (101, 55003), (109, 54952), (111, 54943), (115, 54928), (119, 54892), (130, 54811), (132, 54802), (148, 54742), (153, 54730),

Gene: Scheme_79 Start: 57752, Stop: 58816, Start Num: 7

Candidate Starts for Scheme_79:

(Start: 7 @57752 has 82 MA's), (Start: 12 @57821 has 2 MA's), (35, 57983), (41, 58016), (42, 58019), (46, 58040), (62, 58145), (65, 58187), (73, 58259), (74, 58262), (75, 58274), (79, 58298), (85, 58358), (94, 58409), (98, 58439), (102, 58478), (107, 58514), (115, 58547), (121, 58586), (135, 58676), (152, 58739), (158, 58808),

Gene: Schomber_64 Start: 52480, Stop: 51542, Start Num: 15

Candidate Starts for Schomber_64:

(Start: 15 @52480 has 8 MA's), (Start: 27 @52393 has 2 MA's), (49, 52252), (50, 52246), (61, 52180), (63, 52162), (72, 52075), (74, 52063), (80, 52021), (81, 52018), (82, 52006), (90, 51931), (94, 51901), (95, 51898), (98, 51871), (109, 51790), (111, 51781), (119, 51730), (129, 51652), (153, 51568),

Gene: SeresaTree_58 Start: 47099, Stop: 47941, Start Num: 40

Candidate Starts for SeresaTree_58:

(Start: 7 @46844 has 82 MA's), (36, 47081), (37, 47084), (40, 47099), (44, 47141), (62, 47252), (65, 47294), (75, 47381), (77, 47399), (84, 47465), (88, 47483), (94, 47522), (98, 47552), (115, 47660), (122, 47720), (124, 47732), (137, 47804), (152, 47864), (155, 47903),

Gene: Sham_54 Start: 47385, Stop: 48482, Start Num: 7

Candidate Starts for Sham_54:

(Start: 7 @47385 has 82 MA's), (36, 47622), (40, 47640), (44, 47682), (62, 47793), (65, 47835), (75, 47922), (77, 47940), (89, 48033), (96, 48069), (98, 48093), (100, 48123), (108, 48171), (115, 48201), (124, 48273), (131, 48327), (152, 48405),

Gene: Sollertia_80 Start: 56336, Stop: 57412, Start Num: 7

Candidate Starts for Sollertia_80:

(Start: 7 @56336 has 82 MA's), (Start: 8 @56354 has 5 MA's), (Start: 13 @56408 has 2 MA's), (30, 56543), (43, 56618), (48, 56654), (62, 56735), (65, 56777), (73, 56849), (75, 56864), (80, 56894), (88,

56960), (98, 57029), (100, 57059), (105, 57092), (107, 57104), (113, 57131), (115, 57137), (144, 57302), (152, 57335), (158, 57404),

Gene: SparkleGoddess_58 Start: 47534, Stop: 48631, Start Num: 7

Candidate Starts for SparkleGoddess_58:

(Start: 7 @47534 has 82 MA's), (31, 47750), (52, 47888), (56, 47903), (60, 47933), (62, 47942), (65, 47984), (75, 48071), (79, 48095), (98, 48242), (108, 48320), (115, 48350), (123, 48416), (125, 48428), (142, 48518), (147, 48533), (152, 48554),

Gene: Spelly_80 Start: 56337, Stop: 57413, Start Num: 7

Candidate Starts for Spelly_80:

(Start: 7 @56337 has 82 MA's), (Start: 8 @56355 has 5 MA's), (Start: 13 @56409 has 2 MA's), (30, 56544), (43, 56619), (48, 56655), (58, 56712), (62, 56736), (65, 56778), (73, 56850), (75, 56865), (88, 56961), (89, 56970), (94, 57000), (98, 57030), (102, 57069), (107, 57105), (113, 57132), (115, 57138), (144, 57303), (152, 57336), (155, 57375), (158, 57405),

Gene: Spilled_81 Start: 56454, Stop: 57530, Start Num: 7

Candidate Starts for Spilled_81:

(Start: 7 @56454 has 82 MA's), (Start: 8 @56472 has 5 MA's), (Start: 13 @56526 has 2 MA's), (30, 56661), (43, 56736), (48, 56772), (58, 56829), (62, 56853), (65, 56895), (73, 56967), (75, 56982), (88, 57078), (89, 57087), (94, 57117), (98, 57147), (102, 57186), (107, 57222), (113, 57249), (115, 57255), (144, 57420), (152, 57453), (155, 57492), (158, 57522),

Gene: Squillium_77 Start: 56546, Stop: 57610, Start Num: 7

Candidate Starts for Squillium_77:

(Start: 7 @56546 has 82 MA's), (41, 56810), (42, 56813), (46, 56834), (62, 56939), (65, 56981), (73, 57053), (74, 57056), (75, 57068), (85, 57152), (94, 57203), (98, 57233), (102, 57272), (105, 57296), (115, 57341), (150, 57530), (155, 57572), (158, 57602),

Gene: Stanimal_80 Start: 56225, Stop: 57301, Start Num: 7

Candidate Starts for Stanimal_80:

(Start: 7 @56225 has 82 MA's), (Start: 8 @56243 has 5 MA's), (Start: 13 @56297 has 2 MA's), (30, 56432), (43, 56507), (48, 56543), (62, 56624), (65, 56666), (73, 56738), (75, 56753), (80, 56783), (88, 56849), (98, 56918), (100, 56948), (105, 56981), (107, 56993), (113, 57020), (115, 57026), (144, 57191), (152, 57224), (158, 57293),

Gene: StarPlatinum_80 Start: 56915, Stop: 57973, Start Num: 8

Candidate Starts for StarPlatinum_80:

(Start: 7 @56897 has 82 MA's), (Start: 8 @56915 has 5 MA's), (Start: 13 @56969 has 2 MA's), (30, 57104), (43, 57179), (48, 57215), (58, 57272), (62, 57296), (65, 57338), (73, 57410), (75, 57425), (88, 57521), (89, 57530), (98, 57590), (102, 57629), (107, 57665), (113, 57692), (115, 57698), (144, 57863), (152, 57896), (155, 57935), (158, 57965),

Gene: Starbow_78 Start: 56376, Stop: 57434, Start Num: 8

Candidate Starts for Starbow_78:

(Start: 7 @56358 has 82 MA's), (Start: 8 @56376 has 5 MA's), (Start: 13 @56430 has 2 MA's), (30, 56565), (43, 56640), (48, 56676), (58, 56733), (62, 56757), (65, 56799), (73, 56871), (75, 56886), (88, 56982), (89, 56991), (94, 57021), (98, 57051), (102, 57090), (107, 57126), (113, 57153), (115, 57159), (144, 57324), (152, 57357), (155, 57396), (158, 57426),

Gene: Stigma_57 Start: 47548, Stop: 48645, Start Num: 7

Candidate Starts for Stigma_57:

(Start: 7 @47548 has 82 MA's), (31, 47764), (52, 47902), (56, 47917), (60, 47947), (62, 47956), (65, 47998), (75, 48085), (79, 48109), (98, 48256), (108, 48334), (115, 48364), (123, 48430), (125, 48442), (142, 48532), (147, 48547), (152, 48568),

Gene: Sushi23_77 Start: 57263, Stop: 58327, Start Num: 7

Candidate Starts for Sushi23_77:

(Start: 7 @57263 has 82 MA's), (Start: 12 @57332 has 2 MA's), (35, 57494), (41, 57527), (42, 57530), (46, 57551), (62, 57656), (65, 57698), (73, 57770), (74, 57773), (75, 57785), (79, 57809), (85, 57869), (94, 57920), (98, 57950), (102, 57989), (107, 58025), (115, 58058), (121, 58097), (135, 58187), (152, 58250), (158, 58319),

Gene: Targaryen_78 Start: 57969, Stop: 59033, Start Num: 7

Candidate Starts for Targaryen_78:

(Start: 7 @57969 has 82 MA's), (37, 58209), (41, 58233), (42, 58236), (46, 58257), (53, 58311), (62, 58362), (65, 58404), (73, 58476), (74, 58479), (75, 58491), (79, 58515), (85, 58575), (89, 58596), (94, 58626), (98, 58656), (99, 58662), (108, 58734), (115, 58764), (135, 58893), (150, 58953), (155, 58995), (158, 59025),

Gene: Teutsch_78 Start: 57526, Stop: 58590, Start Num: 7

Candidate Starts for Teutsch_78:

(Start: 7 @57526 has 82 MA's), (Start: 12 @57595 has 2 MA's), (35, 57757), (41, 57790), (42, 57793), (46, 57814), (62, 57919), (65, 57961), (73, 58033), (74, 58036), (75, 58048), (79, 58072), (85, 58132), (94, 58183), (98, 58213), (102, 58252), (107, 58288), (115, 58321), (121, 58360), (135, 58450), (152, 58513), (158, 58582),

Gene: TomSawyer_78 Start: 55976, Stop: 57052, Start Num: 7

Candidate Starts for TomSawyer_78:

(Start: 7 @55976 has 82 MA's), (Start: 8 @55994 has 5 MA's), (Start: 13 @56048 has 2 MA's), (30, 56183), (43, 56258), (48, 56294), (58, 56351), (62, 56375), (65, 56417), (73, 56489), (75, 56504), (88, 56600), (89, 56609), (94, 56639), (98, 56669), (102, 56708), (107, 56744), (113, 56771), (115, 56777), (144, 56942), (152, 56975), (155, 57014), (158, 57044),

Gene: Tomas_82 Start: 58734, Stop: 59792, Start Num: 8

Candidate Starts for Tomas_82:

(Start: 7 @58716 has 82 MA's), (Start: 8 @58734 has 5 MA's), (Start: 27 @58902 has 2 MA's), (30, 58923), (43, 58998), (62, 59115), (65, 59157), (73, 59229), (75, 59244), (88, 59340), (98, 59409), (100, 59439), (102, 59448), (115, 59517), (128, 59622), (152, 59715), (158, 59784),

Gene: Tribute_76 Start: 56732, Stop: 57796, Start Num: 7

Candidate Starts for Tribute_76:

(Start: 7 @56732 has 82 MA's), (Start: 12 @56801 has 2 MA's), (Start: 27 @56918 has 2 MA's), (35, 56963), (41, 56996), (42, 56999), (46, 57020), (62, 57125), (65, 57167), (73, 57239), (74, 57242), (75, 57254), (79, 57278), (85, 57338), (94, 57389), (98, 57419), (102, 57458), (107, 57494), (115, 57527), (121, 57566), (135, 57656), (152, 57719), (158, 57788),

Gene: Trina_99 Start: 66025, Stop: 66966, Start Num: 10

Candidate Starts for Trina_99:

(2, 65941), (Start: 10 @66025 has 1 MA's), (Start: 12 @66049 has 2 MA's), (14, 66073), (Start: 19 @66100 has 2 MA's), (39, 66229), (42, 66247), (43, 66256), (57, 66337), (62, 66370), (63, 66385), (73, 66481), (75, 66496), (88, 66595), (106, 66736), (112, 66766), (115, 66775), (117, 66799), (134, 66913), (146, 66958),

Gene: TunaTartare_56 Start: 47688, Stop: 48785, Start Num: 7

Candidate Starts for TunaTartare_56:

(Start: 7 @47688 has 82 MA's), (36, 47925), (37, 47928), (40, 47943), (44, 47985), (62, 48096), (65, 48138), (75, 48225), (77, 48243), (88, 48327), (89, 48336), (96, 48372), (98, 48396), (108, 48474), (115, 48504), (124, 48576), (131, 48630), (152, 48708),

Gene: Twin_63 Start: 52643, Stop: 51792, Start Num: 27

Candidate Starts for Twin_63:

(Start: 15 @52730 has 8 MA's), (Start: 27 @52643 has 2 MA's), (49, 52502), (50, 52496), (61, 52430), (63, 52412), (72, 52325), (74, 52313), (80, 52271), (81, 52268), (82, 52256), (90, 52181), (94, 52151), (95, 52148), (98, 52121), (109, 52040), (111, 52031), (119, 51980), (129, 51902), (153, 51818),

Gene: UBSmoodge_67 Start: 56124, Stop: 55186, Start Num: 15

Candidate Starts for UBSmoodge_67:

(14, 56127), (Start: 15 @56124 has 8 MA's), (Start: 27 @56037 has 2 MA's), (49, 55896), (50, 55890), (61, 55824), (64, 55794), (68, 55752), (72, 55719), (74, 55707), (78, 55674), (81, 55662), (82, 55650), (90, 55575), (98, 55515), (99, 55509), (101, 55485), (109, 55434), (111, 55425), (119, 55374), (130, 55293), (132, 55284), (153, 55212),

Gene: Wakanda_54 Start: 47682, Stop: 48764, Start Num: 7

Candidate Starts for Wakanda_54:

(Start: 7 @47682 has 82 MA's), (62, 48075), (65, 48117), (75, 48204), (77, 48222), (88, 48306), (94, 48345), (98, 48375), (100, 48405), (115, 48483), (118, 48513), (152, 48687),

Gene: Warpy_81 Start: 57433, Stop: 58497, Start Num: 7

Candidate Starts for Warpy_81:

(Start: 7 @57433 has 82 MA's), (37, 57673), (41, 57697), (42, 57700), (46, 57721), (62, 57826), (65, 57868), (73, 57940), (74, 57943), (75, 57955), (79, 57979), (85, 58039), (89, 58060), (94, 58090), (98, 58120), (99, 58126), (115, 58228), (135, 58357), (150, 58417), (155, 58459), (158, 58489),

Gene: Watermoore_78 Start: 57742, Stop: 58806, Start Num: 7

Candidate Starts for Watermoore_78:

(Start: 7 @57742 has 82 MA's), (Start: 12 @57811 has 2 MA's), (35, 57973), (41, 58006), (42, 58009), (46, 58030), (62, 58135), (65, 58177), (73, 58249), (74, 58252), (75, 58264), (79, 58288), (85, 58348), (94, 58399), (98, 58429), (102, 58468), (107, 58504), (115, 58537), (121, 58576), (135, 58666), (152, 58729), (158, 58798),

Gene: Weasels2_99 Start: 59743, Stop: 60729, Start Num: 7

Candidate Starts for Weasels2_99:

(Start: 7 @59743 has 82 MA's), (28, 59932), (32, 59965), (43, 60019), (57, 60097), (60, 60121), (67, 60187), (69, 60202), (73, 60241), (75, 60256), (108, 60505), (112, 60526), (123, 60604),

Gene: WhereRU_74 Start: 55983, Stop: 57047, Start Num: 7

Candidate Starts for WhereRU_74:

(Start: 7 @55983 has 82 MA's), (41, 56247), (42, 56250), (46, 56271), (62, 56376), (65, 56418), (73, 56490), (74, 56493), (75, 56505), (85, 56589), (94, 56640), (98, 56670), (102, 56709), (105, 56733), (115, 56778), (150, 56967), (155, 57009), (158, 57039),

Gene: Wipeout_77 Start: 56745, Stop: 57803, Start Num: 8

Candidate Starts for Wipeout_77:

(Start: 7 @56727 has 82 MA's), (Start: 8 @56745 has 5 MA's), (Start: 13 @56799 has 2 MA's), (30, 56934), (43, 57009), (48, 57045), (58, 57102), (62, 57126), (65, 57168), (73, 57240), (75, 57255), (88, 57351), (89, 57360), (94, 57390), (98, 57420), (102, 57459), (107, 57495), (113, 57522), (115, 57528), (144, 57693), (152, 57726), (155, 57765), (158, 57795),

Gene: Wofford_79 Start: 57498, Stop: 58502, Start Num: 13

Candidate Starts for Wofford_79:

(Start: 7 @57426 has 82 MA's), (Start: 8 @57444 has 5 MA's), (Start: 13 @57498 has 2 MA's), (30, 57633), (36, 57663), (43, 57708), (48, 57744), (58, 57801), (62, 57825), (65, 57867), (73, 57939), (75, 57954), (88, 58050), (89, 58059), (98, 58119), (102, 58158), (107, 58194), (113, 58221), (115, 58227), (144, 58392), (152, 58425), (155, 58464), (158, 58494),

Gene: Yaboi_80 Start: 56313, Stop: 57389, Start Num: 7

Candidate Starts for Yaboi_80:

(Start: 7 @56313 has 82 MA's), (Start: 8 @56331 has 5 MA's), (Start: 13 @56385 has 2 MA's), (30, 56520), (43, 56595), (48, 56631), (62, 56712), (65, 56754), (73, 56826), (75, 56841), (80, 56871), (88, 56937), (98, 57006), (100, 57036), (105, 57069), (107, 57081), (113, 57108), (115, 57114), (144, 57279), (152, 57312), (158, 57381),