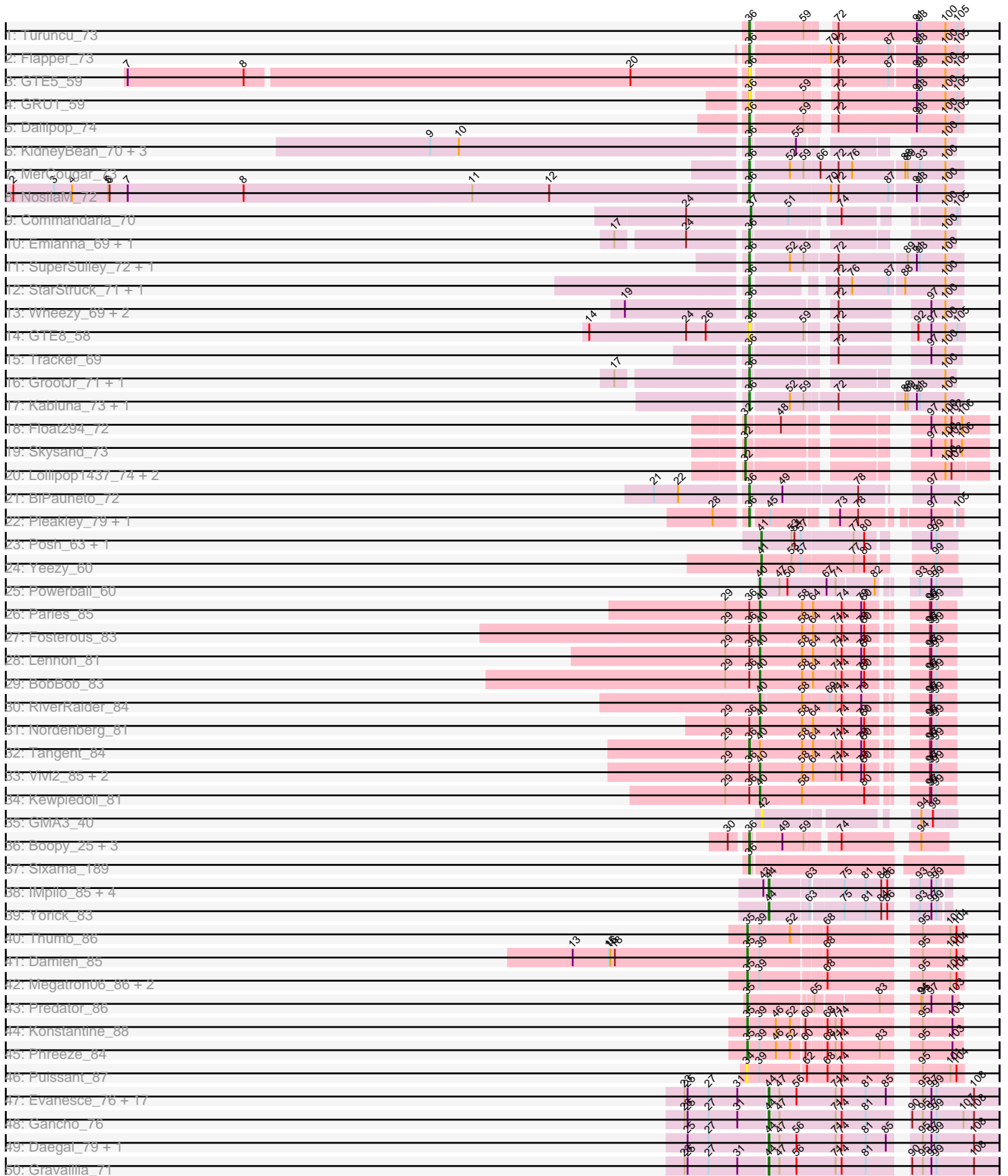
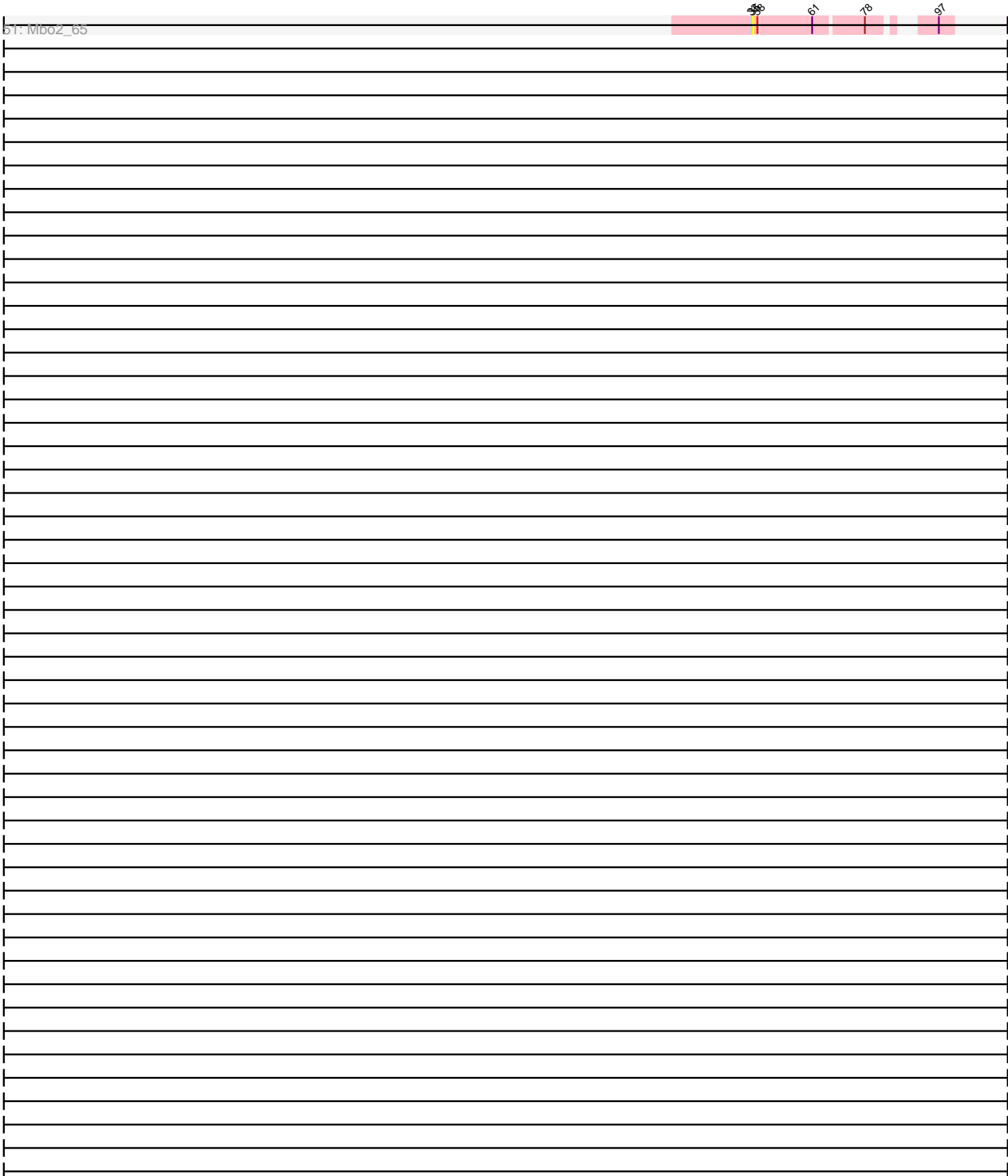


Zoomed Pham 196441



Zoomed Pham 196441



Note: Tracks are now grouped by subcluster and scaled. Switching in subcluster is indicated by changes in track color. Track scale is now set by default to display the region 30 bp upstream of start 1 to 30 bp downstream of the last possible start. If this default region is judged to be packed too tightly with annotated starts, the track will be further scaled to only show that region of the ORF with annotated starts. This action will be indicated by adding "Zoomed" to the title. For starts, yellow indicates the location of called starts comprised solely of Glimmer/GeneMark auto-annotations, green indicates the location of called starts with at least 1 manual gene annotation.

Pham 196441 Report

This analysis was run 12/09/24 on database version 580.

Pham number 196441 has 94 members, 8 are drafts.

Phages represented in each track:

- Track 1 : Turuncu_73
- Track 2 : Flapper_73
- Track 3 : GTE5_59
- Track 4 : GRU1_59
- Track 5 : Dalilpop_74
- Track 6 : KidneyBean_70, Phomeo_70, Foxboro_70, Jifall16_69
- Track 7 : MerCougar_73
- Track 8 : NosilaM_72
- Track 9 : Commandaria_70
- Track 10 : Emianna_69, Kurt_69
- Track 11 : SuperSulley_72, Buggaboo_72
- Track 12 : StarStruck_71, Outis_71
- Track 13 : Wheezy_69, Arti_68, NatB6_69
- Track 14 : GTE8_58
- Track 15 : Tracker_69
- Track 16 : GrootJr_71, NovumRegina_69
- Track 17 : Kabluna_73, Bonum_74
- Track 18 : Float294_72
- Track 19 : Skysand_73
- Track 20 : Lollipop1437_74, Patio_72, Ennea_77
- Track 21 : BiPauneto_72
- Track 22 : Pleakley_79, Fury_79
- Track 23 : Posh_63, Wrigley_65
- Track 24 : Yeezy_60
- Track 25 : Powerball_60
- Track 26 : Paries_85
- Track 27 : Fosterous_83
- Track 28 : Lennon_81
- Track 29 : BobBob_83
- Track 30 : RiverRaider_84
- Track 31 : Nordenberg_81
- Track 32 : Tangent_84
- Track 33 : Vivi2_85, Rofo_81, Charming_84
- Track 34 : Kewpiedoll_81
- Track 35 : GMA3_40
- Track 36 : Boopy_25, Mareelih_23, BlueNGold_23, Forza_25
- Track 37 : Sixama_189

- Track 38 : IMpilo_85, Phalconet_89, DaWorst_90, JalFarm20_98, Spikelee_90
- Track 39 : Yorick_83
- Track 40 : Thumb_86
- Track 41 : Damien_85
- Track 42 : Megatron06_86, Beckerton_84, Oaker_85
- Track 43 : Predator_86
- Track 44 : Konstantine_88
- Track 45 : Phreeze_84
- Track 46 : Puissant_87
- Track 47 : Evanesce_76, Amymech_77, Ein37_77, Hadrien_74, Kinbote_75, Luna22_70, Webster2_77, OBUpride_76, Luke_74, LilHazelNut_77, Giles_70, Forge_70, Dewey_70, Ubuntu_77, Hail_70, DeepSoil15_77, HH92_76, Wishmaker_70
- Track 48 : Gancho_76
- Track 49 : Daegal_79, Amochick_78
- Track 50 : Gravaillia_71
- Track 51 : Mbo2_65

Summary of Final Annotations (See graph section above for start numbers):

The start number called the most often in the published annotations is 36, it was called in 31 of the 86 non-draft genes in the pham.

Genes that call this "Most Annotated" start:

- Arti_68, BiPauneto_72, BlueNGold_23, Bonum_74, Boopy_25, Buggaboo_72, Dalilpop_74, Emianna_69, Flapper_73, Forza_25, Foxboro_70, Fury_79, GRU1_59, GTE5_59, GTE8_58, GrootJr_71, Jifall16_69, Kabluna_73, KidneyBean_70, Kurt_69, Mareelih_23, MerCougar_73, NatB6_69, NosilaM_72, NovumRegina_69, Outis_71, Phomeo_70, Pleakley_79, Sixama_189, StarStruck_71, SuperSulley_72, Tangent_84, Tracker_69, Turuncu_73, Wheezy_69,

Genes that have the "Most Annotated" start but do not call it:

- BobBob_83, Charming_84, Fosterous_83, Kewpiedoll_81, Lennon_81, Nordenberg_81, Paries_85, Rofo_81, Vivi2_85,

Genes that do not have the "Most Annotated" start:

- Amochick_78, Amymech_77, Beckerton_84, Commandaria_70, DaWorst_90, Daegal_79, Damien_85, DeepSoil15_77, Dewey_70, Ein37_77, Ennea_77, Evanesce_76, Float294_72, Forge_70, GMA3_40, Gancho_76, Giles_70, Gravaillia_71, HH92_76, Hadrien_74, Hail_70, IMpilo_85, JalFarm20_98, Kinbote_75, Konstantine_88, LilHazelNut_77, Lollipop1437_74, Luke_74, Luna22_70, Mbo2_65, Megatron06_86, OBUpride_76, Oaker_85, Patio_72, Phalconet_89, Phreeze_84, Posh_63, Powerball_60, Predator_86, Puissant_87, RiverRaider_84, Skysand_73, Spikelee_90, Thumb_86, Ubuntu_77, Webster2_77, Wishmaker_70, Wrigley_65, Yeezy_60, Yorick_83,

Summary by start number:

Start 32:

- Found in 5 of 94 (5.3%) of genes in pham

- Manual Annotations of this start: 5 of 86
- Called 100.0% of time when present
- Phage (with cluster) where this start called: Ennea_77 (CR3), Float294_72 (CR3), Lollipop1437_74 (CR3), Patio_72 (CR3), Skysand_73 (CR3),

Start 34:

- Found in 1 of 94 (1.1%) of genes in pham
- No Manual Annotations of this start.
- Called 100.0% of time when present
- Phage (with cluster) where this start called: Puissant_87 (H1),

Start 35:

- Found in 9 of 94 (9.6%) of genes in pham
- Manual Annotations of this start: 8 of 86
- Called 100.0% of time when present
- Phage (with cluster) where this start called: Beckerton_84 (H1), Damien_85 (H1), Konstantine_88 (H1), Mbo2_65 (singleton), Megatron06_86 (H1), Oaker_85 (H1), Phreeze_84 (H1), Predator_86 (H1), Thumb_86 (H1),

Start 36:

- Found in 44 of 94 (46.8%) of genes in pham
- Manual Annotations of this start: 31 of 86
- Called 79.5% of time when present
- Phage (with cluster) where this start called: Arti_68 (CR2), BiPauneto_72 (CR4), BlueNGold_23 (DS), Bonum_74 (CR2), Boopy_25 (DS), Buggaboo_72 (CR2), Dalilpop_74 (CR1), Emianna_69 (CR2), Flapper_73 (CR1), Forza_25 (DS), Foxboro_70 (CR2), Fury_79 (CR5), GRU1_59 (CR1), GTE5_59 (CR1), GTE8_58 (CR2), GrootJr_71 (CR2), Jifall16_69 (CR2), Kabluna_73 (CR2), KidneyBean_70 (CR2), Kurt_69 (CR2), Mareelih_23 (DS), MerCougar_73 (CR2), NatB6_69 (CR2), NosilaM_72 (CR2), NovumRegina_69 (CR2), Outis_71 (CR2), Phomeo_70 (CR2), Pleakley_79 (CR5), Sixama_189 (DS), StarStruck_71 (CR2), SuperSulley_72 (CR2), Tangent_84 (DE1), Tracker_69 (CR2), Turuncu_73 (CR1), Wheezy_69 (CR2),

Start 37:

- Found in 1 of 94 (1.1%) of genes in pham
- Manual Annotations of this start: 1 of 86
- Called 100.0% of time when present
- Phage (with cluster) where this start called: Commandaria_70 (CR2),

Start 40:

- Found in 12 of 94 (12.8%) of genes in pham
- Manual Annotations of this start: 11 of 86
- Called 91.7% of time when present
- Phage (with cluster) where this start called: BobBob_83 (DE1), Charming_84 (DE1), Fosterous_83 (DE1), Kewpiedoll_81 (DE1), Lennon_81 (DE1), Nordenberg_81 (DE1), Paries_85 (DE1), Powerball_60 (CZ4), RiverRaider_84 (DE1), Rofo_81 (DE1), Vivi2_85 (DE1),

Start 41:

- Found in 3 of 94 (3.2%) of genes in pham
- Manual Annotations of this start: 3 of 86
- Called 100.0% of time when present

- Phage (with cluster) where this start called: Posh_63 (CY), Wrigley_65 (CY), Yeezy_60 (CZ3),

Start 42:

- Found in 1 of 94 (1.1%) of genes in pham
- No Manual Annotations of this start.
- Called 100.0% of time when present
- Phage (with cluster) where this start called: GMA3_40 (DF2),

Start 44:

- Found in 28 of 94 (29.8%) of genes in pham
- Manual Annotations of this start: 27 of 86
- Called 100.0% of time when present
- Phage (with cluster) where this start called: Amochick_78 (Q), Amymech_77 (Q), DaWorst_90 (F1), Daegal_79 (Q), DeepSoil15_77 (Q), Dewey_70 (Q), Ein37_77 (Q), Evanesce_76 (Q), Forge_70 (Q), Gancho_76 (Q), Giles_70 (Q), Gravaillia_71 (Q), HH92_76 (Q), Hadrien_74 (Q), Hail_70 (Q), IMpilo_85 (F1), JalFarm20_98 (F1), Kinbote_75 (Q), LilHazelnut_77 (Q), Luke_74 (Q), Luna22_70 (Q), OBUpride_76 (Q), Phalconet_89 (F1), Spikelee_90 (F1), Ubuntu_77 (Q), Webster2_77 (Q), Wishmaker_70 (Q), Yorick_83 (F1),

Summary by clusters:

There are 15 clusters represented in this pham: CR2, F1, singleton, CR1, CR4, CR3, DE1, H1, CZ4, DF2, Q, CY, CZ3, DS, CR5,

Info for manual annotations of cluster CR1:

- Start number 36 was manually annotated 3 times for cluster CR1.

Info for manual annotations of cluster CR2:

- Start number 36 was manually annotated 19 times for cluster CR2.
- Start number 37 was manually annotated 1 time for cluster CR2.

Info for manual annotations of cluster CR3:

- Start number 32 was manually annotated 5 times for cluster CR3.

Info for manual annotations of cluster CR4:

- Start number 36 was manually annotated 1 time for cluster CR4.

Info for manual annotations of cluster CR5:

- Start number 36 was manually annotated 2 times for cluster CR5.

Info for manual annotations of cluster CY:

- Start number 41 was manually annotated 2 times for cluster CY.

Info for manual annotations of cluster CZ3:

- Start number 41 was manually annotated 1 time for cluster CZ3.

Info for manual annotations of cluster CZ4:

- Start number 40 was manually annotated 1 time for cluster CZ4.

Info for manual annotations of cluster DE1:

- Start number 36 was manually annotated 1 time for cluster DE1.

- Start number 40 was manually annotated 10 times for cluster DE1.

Info for manual annotations of cluster DS:

- Start number 36 was manually annotated 5 times for cluster DS.

Info for manual annotations of cluster F1:

- Start number 44 was manually annotated 5 times for cluster F1.

Info for manual annotations of cluster H1:

- Start number 35 was manually annotated 8 times for cluster H1.

Info for manual annotations of cluster Q:

- Start number 44 was manually annotated 22 times for cluster Q.

Gene Information:

Gene: Amochick_78 Start: 50070, Stop: 50483, Start Num: 44

Candidate Starts for Amochick_78:

(25, 49917), (27, 49959), (Start: 44 @50070 has 27 MA's), (47, 50091), (56, 50124), (71, 50199), (74, 50208), (81, 50256), (85, 50295), (95, 50334), (97, 50349), (99, 50358), (108, 50433),

Gene: Amymech_77 Start: 49523, Stop: 49936, Start Num: 44

Candidate Starts for Amymech_77:

(23, 49364), (25, 49370), (27, 49412), (31, 49469), (Start: 44 @49523 has 27 MA's), (47, 49544), (56, 49577), (71, 49652), (74, 49661), (81, 49709), (85, 49748), (95, 49787), (97, 49802), (99, 49811), (108, 49886),

Gene: Arti_68 Start: 52883, Stop: 52554, Start Num: 36

Candidate Starts for Arti_68:

(19, 53114), (Start: 36 @52883 has 31 MA's), (72, 52751), (97, 52613), (100, 52586),

Gene: Beckerton_84 Start: 62501, Stop: 62869, Start Num: 35

Candidate Starts for Beckerton_84:

(Start: 35 @62501 has 8 MA's), (39, 62522), (68, 62639), (95, 62792), (101, 62843), (104, 62855),

Gene: BiPauneto_72 Start: 52489, Stop: 52160, Start Num: 36

Candidate Starts for BiPauneto_72:

(21, 52663), (22, 52615), (Start: 36 @52489 has 31 MA's), (49, 52429), (78, 52297), (97, 52213),

Gene: BlueNGold_23 Start: 8738, Stop: 8418, Start Num: 36

Candidate Starts for BlueNGold_23:

(30, 8768), (Start: 36 @8738 has 31 MA's), (49, 8684), (59, 8645), (74, 8594), (94, 8468),

Gene: BobBob_83 Start: 56507, Stop: 56824, Start Num: 40

Candidate Starts for BobBob_83:

(29, 56441), (Start: 36 @56489 has 31 MA's), (Start: 40 @56507 has 11 MA's), (58, 56585), (64, 56603), (71, 56648), (74, 56660), (79, 56696), (80, 56702), (96, 56777), (97, 56780), (99, 56789),

Gene: Bonum_74 Start: 54210, Stop: 53830, Start Num: 36

Candidate Starts for Bonum_74:

(Start: 36 @54210 has 31 MA's), (52, 54141), (59, 54117), (72, 54060), (88, 53937), (89, 53934), (91, 53916), (93, 53910), (100, 53862),

Gene: Boopy_25 Start: 8750, Stop: 8430, Start Num: 36

Candidate Starts for Boopy_25:

(30, 8780), (Start: 36 @8750 has 31 MA's), (49, 8696), (59, 8657), (74, 8606), (94, 8480),

Gene: Buggaboo_72 Start: 54776, Stop: 54396, Start Num: 36

Candidate Starts for Buggaboo_72:

(Start: 36 @54776 has 31 MA's), (52, 54707), (59, 54683), (72, 54626), (89, 54500), (91, 54482), (93, 54476), (100, 54428),

Gene: Charming_84 Start: 55966, Stop: 56283, Start Num: 40

Candidate Starts for Charming_84:

(29, 55900), (Start: 36 @55948 has 31 MA's), (Start: 40 @55966 has 11 MA's), (58, 56044), (64, 56062), (71, 56107), (74, 56119), (79, 56155), (80, 56161), (96, 56236), (97, 56239), (99, 56248),

Gene: Commandaria_70 Start: 54164, Stop: 53838, Start Num: 37

Candidate Starts for Commandaria_70:

(24, 54290), (Start: 37 @54164 has 1 MA's), (51, 54092), (74, 54008), (100, 53867), (105, 53843),

Gene: DaWorst_90 Start: 50692, Stop: 50985, Start Num: 44

Candidate Starts for DaWorst_90:

(43, 50686), (Start: 44 @50692 has 27 MA's), (63, 50767), (75, 50821), (81, 50860), (84, 50890), (86, 50902), (93, 50932), (97, 50953), (99, 50962),

Gene: Daegal_79 Start: 50629, Stop: 51042, Start Num: 44

Candidate Starts for Daegal_79:

(25, 50476), (27, 50518), (Start: 44 @50629 has 27 MA's), (47, 50650), (56, 50683), (71, 50758), (74, 50767), (81, 50815), (85, 50854), (95, 50893), (97, 50908), (99, 50917), (108, 50992),

Gene: Dalilpop_74 Start: 55412, Stop: 55041, Start Num: 36

Candidate Starts for Dalilpop_74:

(Start: 36 @55412 has 31 MA's), (59, 55319), (72, 55280), (91, 55130), (93, 55124), (100, 55076), (105, 55052),

Gene: Damien_85 Start: 61997, Stop: 62365, Start Num: 35

Candidate Starts for Damien_85:

(13, 61649), (15, 61721), (16, 61724), (18, 61733), (Start: 35 @61997 has 8 MA's), (39, 62018), (68, 62135), (95, 62288), (101, 62339), (104, 62351),

Gene: DeepSoil15_77 Start: 49523, Stop: 49936, Start Num: 44

Candidate Starts for DeepSoil15_77:

(23, 49364), (25, 49370), (27, 49412), (31, 49469), (Start: 44 @49523 has 27 MA's), (47, 49544), (56, 49577), (71, 49652), (74, 49661), (81, 49709), (85, 49748), (95, 49787), (97, 49802), (99, 49811), (108, 49886),

Gene: Dewey_70 Start: 49523, Stop: 49936, Start Num: 44

Candidate Starts for Dewey_70:

(23, 49364), (25, 49370), (27, 49412), (31, 49469), (Start: 44 @49523 has 27 MA's), (47, 49544), (56, 49577), (71, 49652), (74, 49661), (81, 49709), (85, 49748), (95, 49787), (97, 49802), (99, 49811), (108, 49886),

Gene: Ein37_77 Start: 49523, Stop: 49936, Start Num: 44

Candidate Starts for Ein37_77:

(23, 49364), (25, 49370), (27, 49412), (31, 49469), (Start: 44 @49523 has 27 MA's), (47, 49544), (56, 49577), (71, 49652), (74, 49661), (81, 49709), (85, 49748), (95, 49787), (97, 49802), (99, 49811), (108, 49886),

Gene: Emianna_69 Start: 54094, Stop: 53786, Start Num: 36

Candidate Starts for Emianna_69:

(17, 54325), (24, 54205), (Start: 36 @54094 has 31 MA's), (100, 53806),

Gene: Ennea_77 Start: 55526, Stop: 55152, Start Num: 32

Candidate Starts for Ennea_77:

(Start: 32 @55526 has 5 MA's), (100, 55232), (102, 55220),

Gene: Evanesce_76 Start: 49523, Stop: 49936, Start Num: 44

Candidate Starts for Evanesce_76:

(23, 49364), (25, 49370), (27, 49412), (31, 49469), (Start: 44 @49523 has 27 MA's), (47, 49544), (56, 49577), (71, 49652), (74, 49661), (81, 49709), (85, 49748), (95, 49787), (97, 49802), (99, 49811), (108, 49886),

Gene: Flapper_73 Start: 54630, Stop: 54241, Start Num: 36

Candidate Starts for Flapper_73:

(Start: 36 @54630 has 31 MA's), (70, 54489), (72, 54474), (87, 54378), (91, 54330), (93, 54324), (100, 54276), (105, 54252),

Gene: Float294_72 Start: 55429, Stop: 55049, Start Num: 32

Candidate Starts for Float294_72:

(Start: 32 @55429 has 5 MA's), (48, 55369), (97, 55162), (100, 55135), (102, 55123), (106, 55102),

Gene: Forge_70 Start: 49523, Stop: 49936, Start Num: 44

Candidate Starts for Forge_70:

(23, 49364), (25, 49370), (27, 49412), (31, 49469), (Start: 44 @49523 has 27 MA's), (47, 49544), (56, 49577), (71, 49652), (74, 49661), (81, 49709), (85, 49748), (95, 49787), (97, 49802), (99, 49811), (108, 49886),

Gene: Forza_25 Start: 8790, Stop: 8470, Start Num: 36

Candidate Starts for Forza_25:

(30, 8820), (Start: 36 @8790 has 31 MA's), (49, 8736), (59, 8697), (74, 8646), (94, 8520),

Gene: Fosterous_83 Start: 56959, Stop: 57276, Start Num: 40

Candidate Starts for Fosterous_83:

(29, 56893), (Start: 36 @56941 has 31 MA's), (Start: 40 @56959 has 11 MA's), (58, 57037), (64, 57055), (71, 57100), (74, 57112), (79, 57148), (80, 57154), (96, 57229), (97, 57232), (99, 57241),

Gene: Foxboro_70 Start: 54622, Stop: 54311, Start Num: 36

Candidate Starts for Foxboro_70:

(9, 55240), (10, 55183), (Start: 36 @54622 has 31 MA's), (55, 54538), (100, 54331),

Gene: Fury_79 Start: 53744, Stop: 53415, Start Num: 36

Candidate Starts for Fury_79:

(28, 53798), (Start: 36 @53744 has 31 MA's), (45, 53714), (73, 53612), (78, 53579), (97, 53468), (105, 53426),

Gene: GMA3_40 Start: 41542, Stop: 41240, Start Num: 42

Candidate Starts for GMA3_40:

(42, 41542), (94, 41305), (98, 41284),

Gene: GRU1_59 Start: 46466, Stop: 46095, Start Num: 36

Candidate Starts for GRU1_59:

(Start: 36 @46466 has 31 MA's), (59, 46373), (72, 46334), (91, 46184), (93, 46178), (100, 46130), (105, 46106),

Gene: GTE5_59 Start: 47643, Stop: 47281, Start Num: 36

Candidate Starts for GTE5_59:

(7, 48852), (8, 48621), (20, 47865), (Start: 36 @47643 has 31 MA's), (72, 47514), (87, 47418), (91, 47370), (93, 47364), (100, 47316), (105, 47292),

Gene: GTE8_58 Start: 47388, Stop: 47053, Start Num: 36

Candidate Starts for GTE8_58:

(14, 47703), (24, 47514), (26, 47475), (Start: 36 @47388 has 31 MA's), (59, 47292), (72, 47256), (92, 47142), (97, 47118), (100, 47091), (105, 47067),

Gene: Gancho_76 Start: 49298, Stop: 49711, Start Num: 44

Candidate Starts for Gancho_76:

(23, 49139), (25, 49145), (27, 49187), (31, 49244), (Start: 44 @49298 has 27 MA's), (47, 49319), (71, 49427), (74, 49436), (81, 49484), (90, 49541), (95, 49562), (97, 49577), (99, 49586), (107, 49640), (108, 49661),

Gene: Giles_70 Start: 49523, Stop: 49936, Start Num: 44

Candidate Starts for Giles_70:

(23, 49364), (25, 49370), (27, 49412), (31, 49469), (Start: 44 @49523 has 27 MA's), (47, 49544), (56, 49577), (71, 49652), (74, 49661), (81, 49709), (85, 49748), (95, 49787), (97, 49802), (99, 49811), (108, 49886),

Gene: Gravaillia_71 Start: 49579, Stop: 49992, Start Num: 44

Candidate Starts for Gravaillia_71:

(23, 49420), (25, 49426), (27, 49468), (31, 49525), (Start: 44 @49579 has 27 MA's), (47, 49600), (56, 49633), (71, 49708), (74, 49717), (81, 49765), (90, 49822), (95, 49843), (97, 49858), (99, 49867), (108, 49942),

Gene: GrootJr_71 Start: 53488, Stop: 53180, Start Num: 36

Candidate Starts for GrootJr_71:

(17, 53719), (Start: 36 @53488 has 31 MA's), (100, 53200),

Gene: HH92_76 Start: 49523, Stop: 49936, Start Num: 44

Candidate Starts for HH92_76:

(23, 49364), (25, 49370), (27, 49412), (31, 49469), (Start: 44 @49523 has 27 MA's), (47, 49544), (56, 49577), (71, 49652), (74, 49661), (81, 49709), (85, 49748), (95, 49787), (97, 49802), (99, 49811), (108, 49886),

Gene: Hadrien_74 Start: 49523, Stop: 49936, Start Num: 44

Candidate Starts for Hadrien_74:

(23, 49364), (25, 49370), (27, 49412), (31, 49469), (Start: 44 @49523 has 27 MA's), (47, 49544), (56, 49577), (71, 49652), (74, 49661), (81, 49709), (85, 49748), (95, 49787), (97, 49802), (99, 49811), (108, 49886),

Gene: Hail_70 Start: 49523, Stop: 49936, Start Num: 44

Candidate Starts for Hail_70:

(23, 49364), (25, 49370), (27, 49412), (31, 49469), (Start: 44 @49523 has 27 MA's), (47, 49544), (56, 49577), (71, 49652), (74, 49661), (81, 49709), (85, 49748), (95, 49787), (97, 49802), (99, 49811), (108, 49886),

Gene: IMpilo_85 Start: 49064, Stop: 49357, Start Num: 44

Candidate Starts for IMpilo_85:

(43, 49058), (Start: 44 @49064 has 27 MA's), (63, 49139), (75, 49193), (81, 49232), (84, 49262), (86, 49274), (93, 49304), (97, 49325), (99, 49334),

Gene: JalFarm20_98 Start: 52287, Stop: 52580, Start Num: 44

Candidate Starts for JalFarm20_98:

(43, 52281), (Start: 44 @52287 has 27 MA's), (63, 52362), (75, 52416), (81, 52455), (84, 52485), (86, 52497), (93, 52527), (97, 52548), (99, 52557),

Gene: Jifall16_69 Start: 54115, Stop: 53807, Start Num: 36

Candidate Starts for Jifall16_69:

(9, 54733), (10, 54676), (Start: 36 @54115 has 31 MA's), (55, 54031), (100, 53827),

Gene: Kabluna_73 Start: 53539, Stop: 53159, Start Num: 36

Candidate Starts for Kabluna_73:

(Start: 36 @53539 has 31 MA's), (52, 53470), (59, 53446), (72, 53389), (88, 53266), (89, 53263), (91, 53245), (93, 53239), (100, 53191),

Gene: Kewpiedoll_81 Start: 57152, Stop: 57469, Start Num: 40

Candidate Starts for Kewpiedoll_81:

(29, 57086), (Start: 36 @57134 has 31 MA's), (Start: 40 @57152 has 11 MA's), (58, 57230), (80, 57347), (96, 57422), (97, 57425), (99, 57434),

Gene: KidneyBean_70 Start: 54239, Stop: 53931, Start Num: 36

Candidate Starts for KidneyBean_70:

(9, 54857), (10, 54800), (Start: 36 @54239 has 31 MA's), (55, 54155), (100, 53951),

Gene: Kinbote_75 Start: 49523, Stop: 49936, Start Num: 44

Candidate Starts for Kinbote_75:

(23, 49364), (25, 49370), (27, 49412), (31, 49469), (Start: 44 @49523 has 27 MA's), (47, 49544), (56, 49577), (71, 49652), (74, 49661), (81, 49709), (85, 49748), (95, 49787), (97, 49802), (99, 49811), (108, 49886),

Gene: Konstantine_88 Start: 62501, Stop: 62863, Start Num: 35

Candidate Starts for Konstantine_88:

(Start: 35 @62501 has 8 MA's), (39, 62522), (46, 62552), (52, 62579), (60, 62603), (68, 62639), (71, 62654), (74, 62666), (95, 62792), (103, 62843),

Gene: Kurt_69 Start: 54109, Stop: 53801, Start Num: 36

Candidate Starts for Kurt_69:

(17, 54340), (24, 54220), (Start: 36 @54109 has 31 MA's), (100, 53821),

Gene: Lennon_81 Start: 58019, Stop: 58336, Start Num: 40

Candidate Starts for Lennon_81:

(29, 57953), (Start: 36 @58001 has 31 MA's), (Start: 40 @58019 has 11 MA's), (58, 58097), (64, 58115), (71, 58160), (74, 58172), (79, 58208), (80, 58214), (96, 58289), (97, 58292), (99, 58301),

Gene: LilHazelnut_77 Start: 49523, Stop: 49936, Start Num: 44

Candidate Starts for LilHazelnut_77:

(23, 49364), (25, 49370), (27, 49412), (31, 49469), (Start: 44 @49523 has 27 MA's), (47, 49544), (56, 49577), (71, 49652), (74, 49661), (81, 49709), (85, 49748), (95, 49787), (97, 49802), (99, 49811), (108, 49886),

Gene: Lollipop1437_74 Start: 55206, Stop: 54832, Start Num: 32

Candidate Starts for Lollipop1437_74:

(Start: 32 @55206 has 5 MA's), (100, 54912), (102, 54900),

Gene: Luke_74 Start: 49478, Stop: 49891, Start Num: 44

Candidate Starts for Luke_74:

(23, 49319), (25, 49325), (27, 49367), (31, 49424), (Start: 44 @49478 has 27 MA's), (47, 49499), (56, 49532), (71, 49607), (74, 49616), (81, 49664), (85, 49703), (95, 49742), (97, 49757), (99, 49766), (108, 49841),

Gene: Luna22_70 Start: 49507, Stop: 49920, Start Num: 44

Candidate Starts for Luna22_70:

(23, 49348), (25, 49354), (27, 49396), (31, 49453), (Start: 44 @49507 has 27 MA's), (47, 49528), (56, 49561), (71, 49636), (74, 49645), (81, 49693), (85, 49732), (95, 49771), (97, 49786), (99, 49795), (108, 49870),

Gene: Mareelih_23 Start: 8195, Stop: 7875, Start Num: 36

Candidate Starts for Mareelih_23:

(30, 8225), (Start: 36 @8195 has 31 MA's), (49, 8141), (59, 8102), (74, 8051), (94, 7925),

Gene: Mbo2_65 Start: 49843, Stop: 49532, Start Num: 35

Candidate Starts for Mbo2_65:

(33, 49846), (Start: 35 @49843 has 8 MA's), (38, 49834), (61, 49735), (78, 49642), (97, 49558),

Gene: Megatron06_86 Start: 62582, Stop: 62950, Start Num: 35

Candidate Starts for Megatron06_86:

(Start: 35 @62582 has 8 MA's), (39, 62603), (68, 62720), (95, 62873), (101, 62924), (104, 62936),

Gene: MerCougar_73 Start: 55255, Stop: 54872, Start Num: 36

Candidate Starts for MerCougar_73:

(Start: 36 @55255 has 31 MA's), (52, 55186), (59, 55162), (66, 55138), (72, 55102), (76, 55075), (88, 54979), (89, 54976), (93, 54952), (100, 54904),

Gene: NatB6_69 Start: 53199, Stop: 52870, Start Num: 36

Candidate Starts for NatB6_69:

(19, 53430), (Start: 36 @53199 has 31 MA's), (72, 53067), (97, 52929), (100, 52902),

Gene: Nordenberg_81 Start: 55813, Stop: 56130, Start Num: 40

Candidate Starts for Nordenberg_81:

(29, 55747), (Start: 36 @55795 has 31 MA's), (Start: 40 @55813 has 11 MA's), (58, 55891), (64, 55909), (74, 55966), (79, 56002), (80, 56008), (96, 56083), (97, 56086), (99, 56095),

Gene: NosilaM_72 Start: 54191, Stop: 53805, Start Num: 36

Candidate Starts for NosilaM_72:

(1, 55988), (2, 55640), (3, 55559), (4, 55523), (5, 55451), (6, 55448), (7, 55412), (8, 55181), (11, 54728), (12, 54575), (Start: 36 @54191 has 31 MA's), (70, 54050), (72, 54035), (87, 53939), (91,

53891), (93, 53885), (100, 53837),

Gene: NovumRegina_69 Start: 53487, Stop: 53179, Start Num: 36

Candidate Starts for NovumRegina_69:

(17, 53718), (Start: 36 @53487 has 31 MA's), (100, 53199),

Gene: OBUpride_76 Start: 49567, Stop: 49980, Start Num: 44

Candidate Starts for OBUpride_76:

(23, 49408), (25, 49414), (27, 49456), (31, 49513), (Start: 44 @49567 has 27 MA's), (47, 49588), (56, 49621), (71, 49696), (74, 49705), (81, 49753), (85, 49792), (95, 49831), (97, 49846), (99, 49855), (108, 49930),

Gene: Oaker_85 Start: 62599, Stop: 62967, Start Num: 35

Candidate Starts for Oaker_85:

(Start: 35 @62599 has 8 MA's), (39, 62620), (68, 62737), (95, 62890), (101, 62941), (104, 62953),

Gene: Outis_71 Start: 54347, Stop: 53991, Start Num: 36

Candidate Starts for Outis_71:

(Start: 36 @54347 has 31 MA's), (72, 54221), (76, 54194), (87, 54125), (88, 54098), (100, 54023),

Gene: Paries_85 Start: 58101, Stop: 58418, Start Num: 40

Candidate Starts for Paries_85:

(29, 58035), (Start: 36 @58083 has 31 MA's), (Start: 40 @58101 has 11 MA's), (58, 58179), (64, 58197), (74, 58254), (79, 58290), (80, 58296), (96, 58371), (97, 58374), (99, 58383),

Gene: Patio_72 Start: 54263, Stop: 53889, Start Num: 32

Candidate Starts for Patio_72:

(Start: 32 @54263 has 5 MA's), (100, 53969), (102, 53957),

Gene: Phalconet_89 Start: 50694, Stop: 50987, Start Num: 44

Candidate Starts for Phalconet_89:

(43, 50688), (Start: 44 @50694 has 27 MA's), (63, 50769), (75, 50823), (81, 50862), (84, 50892), (86, 50904), (93, 50934), (97, 50955), (99, 50964),

Gene: Phomeo_70 Start: 54111, Stop: 53803, Start Num: 36

Candidate Starts for Phomeo_70:

(9, 54729), (10, 54672), (Start: 36 @54111 has 31 MA's), (55, 54027), (100, 53823),

Gene: Phreeze_84 Start: 61531, Stop: 61893, Start Num: 35

Candidate Starts for Phreeze_84:

(Start: 35 @61531 has 8 MA's), (39, 61552), (46, 61582), (52, 61609), (60, 61633), (68, 61669), (71, 61684), (74, 61696), (83, 61771), (95, 61822), (103, 61873),

Gene: Pleakley_79 Start: 53745, Stop: 53416, Start Num: 36

Candidate Starts for Pleakley_79:

(28, 53799), (Start: 36 @53745 has 31 MA's), (45, 53715), (73, 53613), (78, 53580), (97, 53469), (105, 53427),

Gene: Posh_63 Start: 44207, Stop: 44524, Start Num: 41

Candidate Starts for Posh_63:

(Start: 41 @44207 has 3 MA's), (53, 44267), (54, 44273), (57, 44285), (77, 44384), (80, 44402), (97, 44477), (99, 44486),

Gene: Powerball_60 Start: 40758, Stop: 41087, Start Num: 40

Candidate Starts for Powerball_60:

(Start: 40 @40758 has 11 MA's), (47, 40794), (50, 40809), (67, 40881), (71, 40899), (82, 40971), (93, 41007), (97, 41028), (99, 41037),

Gene: Predator_86 Start: 63141, Stop: 63479, Start Num: 35

Candidate Starts for Predator_86:

(Start: 35 @63141 has 8 MA's), (65, 63252), (83, 63366), (94, 63414), (95, 63417), (97, 63432), (103, 63468),

Gene: Puissant_87 Start: 62176, Stop: 62547, Start Num: 34

Candidate Starts for Puissant_87:

(34, 62176), (39, 62197), (62, 62281), (68, 62317), (74, 62344), (95, 62470), (101, 62521), (104, 62533),

Gene: RiverRaider_84 Start: 55160, Stop: 55474, Start Num: 40

Candidate Starts for RiverRaider_84:

(Start: 40 @55160 has 11 MA's), (58, 55235), (69, 55286), (71, 55298), (74, 55310), (79, 55346), (96, 55427), (97, 55430), (99, 55439),

Gene: Rofo_81 Start: 56542, Stop: 56859, Start Num: 40

Candidate Starts for Rofo_81:

(29, 56476), (Start: 36 @56524 has 31 MA's), (Start: 40 @56542 has 11 MA's), (58, 56620), (64, 56638), (71, 56683), (74, 56695), (79, 56731), (80, 56737), (96, 56812), (97, 56815), (99, 56824),

Gene: Sixama_189 Start: 108945, Stop: 108553, Start Num: 36

Candidate Starts for Sixama_189:

(Start: 36 @108945 has 31 MA's),

Gene: Skysand_73 Start: 54926, Stop: 54546, Start Num: 32

Candidate Starts for Skysand_73:

(Start: 32 @54926 has 5 MA's), (97, 54659), (100, 54632), (102, 54620), (106, 54599),

Gene: Spikelee_90 Start: 52392, Stop: 52685, Start Num: 44

Candidate Starts for Spikelee_90:

(43, 52386), (Start: 44 @52392 has 27 MA's), (63, 52467), (75, 52521), (81, 52560), (84, 52590), (86, 52602), (93, 52632), (97, 52653), (99, 52662),

Gene: StarStruck_71 Start: 54347, Stop: 53991, Start Num: 36

Candidate Starts for StarStruck_71:

(Start: 36 @54347 has 31 MA's), (72, 54221), (76, 54194), (87, 54125), (88, 54098), (100, 54023),

Gene: SuperSulley_72 Start: 54776, Stop: 54396, Start Num: 36

Candidate Starts for SuperSulley_72:

(Start: 36 @54776 has 31 MA's), (52, 54707), (59, 54683), (72, 54626), (89, 54500), (91, 54482), (93, 54476), (100, 54428),

Gene: Tangent_84 Start: 56229, Stop: 56564, Start Num: 36

Candidate Starts for Tangent_84:

(29, 56181), (Start: 36 @56229 has 31 MA's), (Start: 40 @56247 has 11 MA's), (58, 56325), (64, 56343), (71, 56388), (74, 56400), (79, 56436), (80, 56442), (96, 56517), (97, 56520), (99, 56529),

Gene: Thumb_86 Start: 61951, Stop: 62319, Start Num: 35

Candidate Starts for Thumb_86:

(Start: 35 @61951 has 8 MA's), (39, 61972), (52, 62029), (68, 62089), (95, 62242), (101, 62293), (104, 62305),

Gene: Tracker_69 Start: 52943, Stop: 52614, Start Num: 36

Candidate Starts for Tracker_69:

(Start: 36 @52943 has 31 MA's), (72, 52811), (97, 52673), (100, 52646),

Gene: Turuncu_73 Start: 54452, Stop: 54084, Start Num: 36

Candidate Starts for Turuncu_73:

(Start: 36 @54452 has 31 MA's), (59, 54359), (72, 54326), (91, 54173), (93, 54167), (100, 54119), (105, 54095),

Gene: Ubuntu_77 Start: 49523, Stop: 49936, Start Num: 44

Candidate Starts for Ubuntu_77:

(23, 49364), (25, 49370), (27, 49412), (31, 49469), (Start: 44 @49523 has 27 MA's), (47, 49544), (56, 49577), (71, 49652), (74, 49661), (81, 49709), (85, 49748), (95, 49787), (97, 49802), (99, 49811), (108, 49886),

Gene: Vivi2_85 Start: 57303, Stop: 57620, Start Num: 40

Candidate Starts for Vivi2_85:

(29, 57237), (Start: 36 @57285 has 31 MA's), (Start: 40 @57303 has 11 MA's), (58, 57381), (64, 57399), (71, 57444), (74, 57456), (79, 57492), (80, 57498), (96, 57573), (97, 57576), (99, 57585),

Gene: Webster2_77 Start: 49523, Stop: 49936, Start Num: 44

Candidate Starts for Webster2_77:

(23, 49364), (25, 49370), (27, 49412), (31, 49469), (Start: 44 @49523 has 27 MA's), (47, 49544), (56, 49577), (71, 49652), (74, 49661), (81, 49709), (85, 49748), (95, 49787), (97, 49802), (99, 49811), (108, 49886),

Gene: Wheezy_69 Start: 53157, Stop: 52828, Start Num: 36

Candidate Starts for Wheezy_69:

(19, 53388), (Start: 36 @53157 has 31 MA's), (72, 53025), (97, 52887), (100, 52860),

Gene: Wishmaker_70 Start: 49523, Stop: 49936, Start Num: 44

Candidate Starts for Wishmaker_70:

(23, 49364), (25, 49370), (27, 49412), (31, 49469), (Start: 44 @49523 has 27 MA's), (47, 49544), (56, 49577), (71, 49652), (74, 49661), (81, 49709), (85, 49748), (95, 49787), (97, 49802), (99, 49811), (108, 49886),

Gene: Wrigley_65 Start: 43790, Stop: 44107, Start Num: 41

Candidate Starts for Wrigley_65:

(Start: 41 @43790 has 3 MA's), (53, 43850), (54, 43856), (57, 43868), (77, 43967), (80, 43985), (97, 44060), (99, 44069),

Gene: Yeezy_60 Start: 40768, Stop: 41082, Start Num: 41

Candidate Starts for Yeezy_60:

(Start: 41 @40768 has 3 MA's), (53, 40825), (57, 40843), (77, 40942), (80, 40960), (99, 41044),

Gene: Yorick_83 Start: 51376, Stop: 51669, Start Num: 44

Candidate Starts for Yorick_83:

(Start: 44 @51376 has 27 MA's), (63, 51451), (75, 51505), (81, 51544), (84, 51574), (86, 51586), (93, 51616), (97, 51637), (99, 51646),

