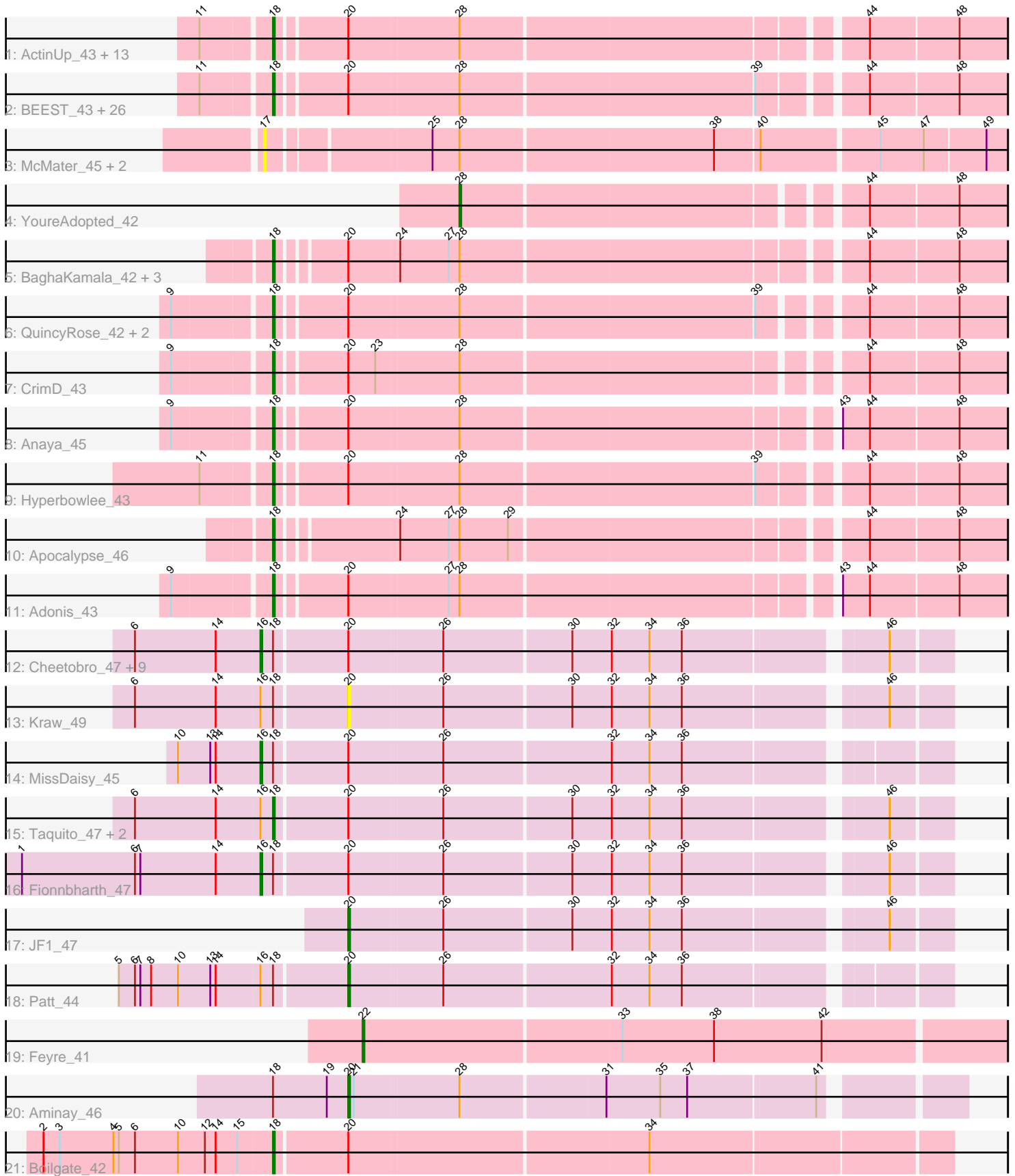


Pham 196483



Note: Tracks are now grouped by subcluster and scaled. Switching in subcluster is indicated by changes in track color. Track scale is now set by default to display the region 30 bp upstream of start 1 to 30 bp downstream of the last possible start. If this default region is judged to be packed too tightly with annotated starts, the track will be further scaled to only show that region of the ORF with annotated starts. This action will be indicated by adding "Zoomed" to the title. For starts, yellow indicates the location of called starts comprised solely of Glimmer/GeneMark auto-annotations, green indicates the location of called starts with at least 1 manual gene annotation.

Pham 196483 Report

This analysis was run 12/09/24 on database version 580.

Pham number 196483 has 78 members, 4 are drafts.

Phages represented in each track:

- Track 1 : ActinUp_43, Adephagia_43, Slimphazie_43, Jayhawk_44, Tachez_43, BarrelRoll_43, Ramen_43, Padpat_44, Atiba_43, Rapunzel97_43, HedwigODU_43, Emerson_44, TruffulaTree_43, Veliki_43
- Track 2 : BEEST_43, Durfee_43, Topper_43, Padfoot_43, Dalmuri_43, CaseJules_44, Boiiii_43, Joy99_43, Homura_43, Asayake_43, Blizzard_43, BGIlluviae_43, Spock_43, JAWS_43, Lunahalos_43, Capricorn_43, Llorens_43, Jeckyll_43, ShiaSurprise_44, Twitch_43, Rosmarinus_43, Peel_43, Jarvi_43, CREW_43, Piatt_43, Belladonna_43, Inky_43
- Track 3 : McMater_45, Dartin_45, Richo_45
- Track 4 : YoureAdopted_42
- Track 5 : BaghaKamala_42, Pokerus_42, AlishaPH_43, Geraldini_45
- Track 6 : QuincyRose_42, MeaningOfLife_44, Ganymede_44
- Track 7 : CrimD_43
- Track 8 : Anaya_45
- Track 9 : Hyperbowlee_43
- Track 10 : Apocalypse_46
- Track 11 : Adonis_43
- Track 12 : Cheetobro_47, Juliette_49, SamScheppers_46, Chancellor_47, Ruthiejr_48, Eponine_49, Malthus_48, Slarp_47, Mitti_47, Wintermute_47
- Track 13 : Kraw_49
- Track 14 : MissDaisy_45
- Track 15 : Taquito_47, Y10_46, Y2_46
- Track 16 : Fionnbharth_47
- Track 17 : JF1_47
- Track 18 : Patt_44
- Track 19 : Feyre_41
- Track 20 : Aminay_46
- Track 21 : Boilgate_42

Summary of Final Annotations (See graph section above for start numbers):

The start number called the most often in the published annotations is 18, it was called in 57 of the 74 non-draft genes in the pham.

Genes that call this "Most Annotated" start:

- ActinUp_43, Adephegia_43, Adonis_43, AlishaPH_43, Anaya_45, Apocalypse_46, Asayake_43, Atiba_43, BEEST_43, BGIlluviae_43, BaghaKamala_42, BarrelRoll_43, Belladonna_43, Blizzard_43, Boiiii_43, Boilgate_42, CREW_43, Capricorn_43, CaseJules_44, CrimD_43, Dalmuri_43, Durfee_43, Emerson_44, Ganymede_44, Geraldini_45, HedwigODU_43, Homura_43, Hyperbowlee_43, Inky_43, JAWS_43, Jarvi_43, Jayhawk_44, Jeckyll_43, Joy99_43, Llorens_43, Lunahalos_43, MeaningOfLife_44, Padfoot_43, Padpat_44, Peel_43, Piatt_43, Pokerus_42, QuincyRose_42, Ramen_43, Rapunzel97_43, Rosmarinus_43, ShiaSurprise_44, Slimphazie_43, Spock_43, Tachez_43, Taquito_47, Topper_43, TruffulaTree_43, Twitch_43, Veliki_43, Y10_46, Y2_46,

Genes that have the "Most Annotated" start but do not call it:

- Aminay_46, Chancellor_47, Cheetobro_47, Eponine_49, Fionnbharth_47, Juliette_49, Kraw_49, Malthus_48, MissDaisy_45, Mitti_47, Patt_44, Ruthiejr_48, SamScheppers_46, Slarp_47, Wintermute_47,

Genes that do not have the "Most Annotated" start:

- Dartin_45, Feyre_41, JF1_47, McMater_45, Richo_45, YoureAdopted_42,

Summary by start number:

Start 16:

- Found in 17 of 78 (21.8%) of genes in pham
- Manual Annotations of this start: 12 of 74
- Called 70.6% of time when present
- Phage (with cluster) where this start called: Chancellor_47 (K4), Cheetobro_47 (K4), Eponine_49 (K4), Fionnbharth_47 (K4), Juliette_49 (K4), Malthus_48 (K4), MissDaisy_45 (K4), Mitti_47 (K4), Ruthiejr_48 (K4), SamScheppers_46 (K4), Slarp_47 (K4), Wintermute_47 (K4),

Start 17:

- Found in 3 of 78 (3.8%) of genes in pham
- No Manual Annotations of this start.
- Called 100.0% of time when present
- Phage (with cluster) where this start called: Dartin_45 (K1), McMater_45 (K1), Richo_45 (K1),

Start 18:

- Found in 72 of 78 (92.3%) of genes in pham
- Manual Annotations of this start: 57 of 74
- Called 79.2% of time when present
- Phage (with cluster) where this start called: ActinUp_43 (K1), Adephegia_43 (K1), Adonis_43 (K1), AlishaPH_43 (K1), Anaya_45 (K1), Apocalypse_46 (K1), Asayake_43 (K1), Atiba_43 (K1), BEEST_43 (K1), BGIlluviae_43 (K1), BaghaKamala_42 (K1), BarrelRoll_43 (K1), Belladonna_43 (K1), Blizzard_43 (K1), Boiiii_43 (K1), Boilgate_42 (K8), CREW_43 (K1), Capricorn_43 (K1), CaseJules_44 (K1), CrimD_43 (K1), Dalmuri_43 (K1), Durfee_43 (K1), Emerson_44 (K1), Ganymede_44 (K1), Geraldini_45 (K1), HedwigODU_43 (K1), Homura_43 (K1), Hyperbowlee_43 (K1), Inky_43 (K1), JAWS_43 (K1), Jarvi_43 (K1), Jayhawk_44 (K1), Jeckyll_43 (K1), Joy99_43 (K1), Llorens_43 (K1), Lunahalos_43 (K1), MeaningOfLife_44 (K1), Padfoot_43 (K1), Padpat_44 (K1), Peel_43 (K1), Piatt_43 (K1), Pokerus_42 (K1), QuincyRose_42 (K1), Ramen_43 (K1), Rapunzel97_43 (K1),

Rosmarinus_43 (K1), ShiaSurprise_44 (K1), Slimphazie_43 (K1), Spock_43 (K1), Tachez_43 (K1), Taquito_47 (K4), Topper_43 (K1), TruffulaTree_43 (K1), Twitch_43 (K1), Veliki_43 (K1), Y10_46 (K4), Y2_46 (K4),

Start 20:

- Found in 72 of 78 (92.3%) of genes in pham
- Manual Annotations of this start: 3 of 74
- Called 5.6% of time when present
- Phage (with cluster) where this start called: Aminay_46 (K7), JF1_47 (K4), Kraw_49 (K4), Patt_44 (K4),

Start 22:

- Found in 1 of 78 (1.3%) of genes in pham
- Manual Annotations of this start: 1 of 74
- Called 100.0% of time when present
- Phage (with cluster) where this start called: Feyre_41 (K5),

Start 28:

- Found in 58 of 78 (74.4%) of genes in pham
- Manual Annotations of this start: 1 of 74
- Called 1.7% of time when present
- Phage (with cluster) where this start called: YoureAdopted_42 (K1),

Summary by clusters:

There are 5 clusters represented in this pham: K1, K8, K7, K5, K4,

Info for manual annotations of cluster K1:

- Start number 18 was manually annotated 53 times for cluster K1.
- Start number 28 was manually annotated 1 time for cluster K1.

Info for manual annotations of cluster K4:

- Start number 16 was manually annotated 12 times for cluster K4.
- Start number 18 was manually annotated 3 times for cluster K4.
- Start number 20 was manually annotated 2 times for cluster K4.

Info for manual annotations of cluster K5:

- Start number 22 was manually annotated 1 time for cluster K5.

Info for manual annotations of cluster K7:

- Start number 20 was manually annotated 1 time for cluster K7.

Info for manual annotations of cluster K8:

- Start number 18 was manually annotated 1 time for cluster K8.

Gene Information:

Gene: ActinUp_43 Start: 34981, Stop: 34601, Start Num: 18

Candidate Starts for ActinUp_43:

(11, 35017), (Start: 18 @34981 has 57 MA's), (Start: 20 @34945 has 3 MA's), (Start: 28 @34885 has 1 MA's), (44, 34675), (48, 34627),

Gene: Adephagia_43 Start: 34978, Stop: 34598, Start Num: 18

Candidate Starts for Adephagia_43:

(11, 35014), (Start: 18 @34978 has 57 MA's), (Start: 20 @34942 has 3 MA's), (Start: 28 @34882 has 1 MA's), (44, 34672), (48, 34624),

Gene: Adonis_43 Start: 35277, Stop: 34897, Start Num: 18

Candidate Starts for Adonis_43:

(9, 35328), (Start: 18 @35277 has 57 MA's), (Start: 20 @35241 has 3 MA's), (27, 35187), (Start: 28 @35181 has 1 MA's), (43, 34986), (44, 34971), (48, 34923),

Gene: AlishaPH_43 Start: 35250, Stop: 34873, Start Num: 18

Candidate Starts for AlishaPH_43:

(Start: 18 @35250 has 57 MA's), (Start: 20 @35217 has 3 MA's), (24, 35190), (27, 35163), (Start: 28 @35157 has 1 MA's), (44, 34947), (48, 34899),

Gene: Aminay_46 Start: 36466, Stop: 36146, Start Num: 20

Candidate Starts for Aminay_46:

(Start: 18 @36508 has 57 MA's), (19, 36478), (Start: 20 @36466 has 3 MA's), (21, 36463), (Start: 28 @36406 has 1 MA's), (31, 36328), (35, 36298), (37, 36283), (41, 36214),

Gene: Anaya_45 Start: 35589, Stop: 35209, Start Num: 18

Candidate Starts for Anaya_45:

(9, 35640), (Start: 18 @35589 has 57 MA's), (Start: 20 @35553 has 3 MA's), (Start: 28 @35493 has 1 MA's), (43, 35298), (44, 35283), (48, 35235),

Gene: Apocalypse_46 Start: 35992, Stop: 35615, Start Num: 18

Candidate Starts for Apocalypse_46:

(Start: 18 @35992 has 57 MA's), (24, 35932), (27, 35905), (Start: 28 @35899 has 1 MA's), (29, 35872), (44, 35689), (48, 35641),

Gene: Asayake_43 Start: 35293, Stop: 34913, Start Num: 18

Candidate Starts for Asayake_43:

(11, 35329), (Start: 18 @35293 has 57 MA's), (Start: 20 @35257 has 3 MA's), (Start: 28 @35197 has 1 MA's), (39, 35038), (44, 34987), (48, 34939),

Gene: Atiba_43 Start: 34941, Stop: 34561, Start Num: 18

Candidate Starts for Atiba_43:

(11, 34977), (Start: 18 @34941 has 57 MA's), (Start: 20 @34905 has 3 MA's), (Start: 28 @34845 has 1 MA's), (44, 34635), (48, 34587),

Gene: BEEST_43 Start: 35293, Stop: 34913, Start Num: 18

Candidate Starts for BEEST_43:

(11, 35329), (Start: 18 @35293 has 57 MA's), (Start: 20 @35257 has 3 MA's), (Start: 28 @35197 has 1 MA's), (39, 35038), (44, 34987), (48, 34939),

Gene: BGlluviae_43 Start: 35096, Stop: 34716, Start Num: 18

Candidate Starts for BGlluviae_43:

(11, 35132), (Start: 18 @35096 has 57 MA's), (Start: 20 @35060 has 3 MA's), (Start: 28 @35000 has 1 MA's), (39, 34841), (44, 34790), (48, 34742),

Gene: BaghaKamala_42 Start: 34415, Stop: 34038, Start Num: 18

Candidate Starts for BaghaKamala_42:

(Start: 18 @34415 has 57 MA's), (Start: 20 @34382 has 3 MA's), (24, 34355), (27, 34328), (Start: 28 @34322 has 1 MA's), (44, 34112), (48, 34064),

Gene: BarrelRoll_43 Start: 34964, Stop: 34584, Start Num: 18

Candidate Starts for BarrelRoll_43:

(11, 35000), (Start: 18 @34964 has 57 MA's), (Start: 20 @34928 has 3 MA's), (Start: 28 @34868 has 1 MA's), (44, 34658), (48, 34610),

Gene: Belladonna_43 Start: 35096, Stop: 34716, Start Num: 18

Candidate Starts for Belladonna_43:

(11, 35132), (Start: 18 @35096 has 57 MA's), (Start: 20 @35060 has 3 MA's), (Start: 28 @35000 has 1 MA's), (39, 34841), (44, 34790), (48, 34742),

Gene: Blizzard_43 Start: 35293, Stop: 34913, Start Num: 18

Candidate Starts for Blizzard_43:

(11, 35329), (Start: 18 @35293 has 57 MA's), (Start: 20 @35257 has 3 MA's), (Start: 28 @35197 has 1 MA's), (39, 35038), (44, 34987), (48, 34939),

Gene: Boiiii_43 Start: 35295, Stop: 34915, Start Num: 18

Candidate Starts for Boiiii_43:

(11, 35331), (Start: 18 @35295 has 57 MA's), (Start: 20 @35259 has 3 MA's), (Start: 28 @35199 has 1 MA's), (39, 35040), (44, 34989), (48, 34941),

Gene: Boilgate_42 Start: 36179, Stop: 35817, Start Num: 18

Candidate Starts for Boilgate_42:

(2, 36305), (3, 36296), (4, 36266), (5, 36263), (6, 36254), (10, 36230), (12, 36215), (14, 36209), (15, 36197), (Start: 18 @36179 has 57 MA's), (Start: 20 @36140 has 3 MA's), (34, 35978),

Gene: CREW_43 Start: 35096, Stop: 34716, Start Num: 18

Candidate Starts for CREW_43:

(11, 35132), (Start: 18 @35096 has 57 MA's), (Start: 20 @35060 has 3 MA's), (Start: 28 @35000 has 1 MA's), (39, 34841), (44, 34790), (48, 34742),

Gene: Capricorn_43 Start: 35096, Stop: 34716, Start Num: 18

Candidate Starts for Capricorn_43:

(11, 35132), (Start: 18 @35096 has 57 MA's), (Start: 20 @35060 has 3 MA's), (Start: 28 @35000 has 1 MA's), (39, 34841), (44, 34790), (48, 34742),

Gene: CaseJules_44 Start: 35293, Stop: 34913, Start Num: 18

Candidate Starts for CaseJules_44:

(11, 35329), (Start: 18 @35293 has 57 MA's), (Start: 20 @35257 has 3 MA's), (Start: 28 @35197 has 1 MA's), (39, 35038), (44, 34987), (48, 34939),

Gene: Chancellor_47 Start: 36038, Stop: 35679, Start Num: 16

Candidate Starts for Chancellor_47:

(6, 36107), (14, 36062), (Start: 16 @36038 has 12 MA's), (Start: 18 @36032 has 57 MA's), (Start: 20 @35993 has 3 MA's), (26, 35942), (30, 35873), (32, 35852), (34, 35831), (36, 35813), (46, 35711),

Gene: Cheetobro_47 Start: 36035, Stop: 35676, Start Num: 16

Candidate Starts for Cheetobro_47:

(6, 36104), (14, 36059), (Start: 16 @36035 has 12 MA's), (Start: 18 @36029 has 57 MA's), (Start: 20 @35990 has 3 MA's), (26, 35939), (30, 35870), (32, 35849), (34, 35828), (36, 35810), (46, 35708),

Gene: CrimD_43 Start: 35221, Stop: 34844, Start Num: 18

Candidate Starts for CrimD_43:

(9, 35272), (Start: 18 @35221 has 57 MA's), (Start: 20 @35185 has 3 MA's), (23, 35170), (Start: 28 @35125 has 1 MA's), (44, 34918), (48, 34870),

Gene: Dalmuri_43 Start: 35096, Stop: 34716, Start Num: 18

Candidate Starts for Dalmuri_43:

(11, 35132), (Start: 18 @35096 has 57 MA's), (Start: 20 @35060 has 3 MA's), (Start: 28 @35000 has 1 MA's), (39, 34841), (44, 34790), (48, 34742),

Gene: Dartin_45 Start: 35648, Stop: 35256, Start Num: 17

Candidate Starts for Dartin_45:

(17, 35648), (25, 35564), (Start: 28 @35549 has 1 MA's), (38, 35411), (40, 35387), (45, 35324), (47, 35300), (49, 35267),

Gene: Durfee_43 Start: 35293, Stop: 34913, Start Num: 18

Candidate Starts for Durfee_43:

(11, 35329), (Start: 18 @35293 has 57 MA's), (Start: 20 @35257 has 3 MA's), (Start: 28 @35197 has 1 MA's), (39, 35038), (44, 34987), (48, 34939),

Gene: Emerson_44 Start: 34972, Stop: 34592, Start Num: 18

Candidate Starts for Emerson_44:

(11, 35008), (Start: 18 @34972 has 57 MA's), (Start: 20 @34936 has 3 MA's), (Start: 28 @34876 has 1 MA's), (44, 34666), (48, 34618),

Gene: Eponine_49 Start: 36791, Stop: 36432, Start Num: 16

Candidate Starts for Eponine_49:

(6, 36860), (14, 36815), (Start: 16 @36791 has 12 MA's), (Start: 18 @36785 has 57 MA's), (Start: 20 @36746 has 3 MA's), (26, 36695), (30, 36626), (32, 36605), (34, 36584), (36, 36566), (46, 36464),

Gene: Feyre_41 Start: 34186, Stop: 33836, Start Num: 22

Candidate Starts for Feyre_41:

(Start: 22 @34186 has 1 MA's), (33, 34045), (38, 33994), (42, 33934),

Gene: Fionnbharth_47 Start: 36189, Stop: 35830, Start Num: 16

Candidate Starts for Fionnbharth_47:

(1, 36321), (6, 36258), (7, 36255), (14, 36213), (Start: 16 @36189 has 12 MA's), (Start: 18 @36183 has 57 MA's), (Start: 20 @36144 has 3 MA's), (26, 36093), (30, 36024), (32, 36003), (34, 35982), (36, 35964), (46, 35862),

Gene: Ganymede_44 Start: 35413, Stop: 35036, Start Num: 18

Candidate Starts for Ganymede_44:

(9, 35464), (Start: 18 @35413 has 57 MA's), (Start: 20 @35377 has 3 MA's), (Start: 28 @35317 has 1 MA's), (39, 35158), (44, 35110), (48, 35062),

Gene: Geraldini_45 Start: 36027, Stop: 35650, Start Num: 18

Candidate Starts for Geraldini_45:

(Start: 18 @36027 has 57 MA's), (Start: 20 @35994 has 3 MA's), (24, 35967), (27, 35940), (Start: 28 @35934 has 1 MA's), (44, 35724), (48, 35676),

Gene: HedwigODU_43 Start: 34981, Stop: 34601, Start Num: 18

Candidate Starts for HedwigODU_43:

(11, 35017), (Start: 18 @34981 has 57 MA's), (Start: 20 @34945 has 3 MA's), (Start: 28 @34885 has 1 MA's), (44, 34675), (48, 34627),

Gene: Homura_43 Start: 35096, Stop: 34716, Start Num: 18

Candidate Starts for Homura_43:

(11, 35132), (Start: 18 @35096 has 57 MA's), (Start: 20 @35060 has 3 MA's), (Start: 28 @35000 has 1 MA's), (39, 34841), (44, 34790), (48, 34742),

Gene: Hyperbowlee_43 Start: 35293, Stop: 34913, Start Num: 18

Candidate Starts for Hyperbowlee_43:

(11, 35329), (Start: 18 @35293 has 57 MA's), (Start: 20 @35257 has 3 MA's), (Start: 28 @35197 has 1 MA's), (39, 35038), (44, 34987), (48, 34939),

Gene: Inky_43 Start: 35096, Stop: 34716, Start Num: 18

Candidate Starts for Inky_43:

(11, 35132), (Start: 18 @35096 has 57 MA's), (Start: 20 @35060 has 3 MA's), (Start: 28 @35000 has 1 MA's), (39, 34841), (44, 34790), (48, 34742),

Gene: JAWS_43 Start: 34970, Stop: 34590, Start Num: 18

Candidate Starts for JAWS_43:

(11, 35006), (Start: 18 @34970 has 57 MA's), (Start: 20 @34934 has 3 MA's), (Start: 28 @34874 has 1 MA's), (39, 34715), (44, 34664), (48, 34616),

Gene: JF1_47 Start: 36061, Stop: 35747, Start Num: 20

Candidate Starts for JF1_47:

(Start: 20 @36061 has 3 MA's), (26, 36010), (30, 35941), (32, 35920), (34, 35899), (36, 35881), (46, 35779),

Gene: Jarvi_43 Start: 35096, Stop: 34716, Start Num: 18

Candidate Starts for Jarvi_43:

(11, 35132), (Start: 18 @35096 has 57 MA's), (Start: 20 @35060 has 3 MA's), (Start: 28 @35000 has 1 MA's), (39, 34841), (44, 34790), (48, 34742),

Gene: Jayhawk_44 Start: 34979, Stop: 34599, Start Num: 18

Candidate Starts for Jayhawk_44:

(11, 35015), (Start: 18 @34979 has 57 MA's), (Start: 20 @34943 has 3 MA's), (Start: 28 @34883 has 1 MA's), (44, 34673), (48, 34625),

Gene: Jeckyll_43 Start: 35096, Stop: 34716, Start Num: 18

Candidate Starts for Jeckyll_43:

(11, 35132), (Start: 18 @35096 has 57 MA's), (Start: 20 @35060 has 3 MA's), (Start: 28 @35000 has 1 MA's), (39, 34841), (44, 34790), (48, 34742),

Gene: Joy99_43 Start: 35025, Stop: 34645, Start Num: 18

Candidate Starts for Joy99_43:

(11, 35061), (Start: 18 @35025 has 57 MA's), (Start: 20 @34989 has 3 MA's), (Start: 28 @34929 has 1 MA's), (39, 34770), (44, 34719), (48, 34671),

Gene: Juliette_49 Start: 36262, Stop: 35903, Start Num: 16

Candidate Starts for Juliette_49:

(6, 36331), (14, 36286), (Start: 16 @36262 has 12 MA's), (Start: 18 @36256 has 57 MA's), (Start: 20 @36217 has 3 MA's), (26, 36166), (30, 36097), (32, 36076), (34, 36055), (36, 36037), (46, 35935),

Gene: Kraw_49 Start: 35905, Stop: 35591, Start Num: 20

Candidate Starts for Kraw_49:

(6, 36019), (14, 35974), (Start: 16 @35950 has 12 MA's), (Start: 18 @35944 has 57 MA's), (Start: 20 @35905 has 3 MA's), (26, 35854), (30, 35785), (32, 35764), (34, 35743), (36, 35725), (46, 35623),

Gene: Llorens_43 Start: 35096, Stop: 34716, Start Num: 18

Candidate Starts for Llorens_43:

(11, 35132), (Start: 18 @35096 has 57 MA's), (Start: 20 @35060 has 3 MA's), (Start: 28 @35000 has 1 MA's), (39, 34841), (44, 34790), (48, 34742),

Gene: Lunahalos_43 Start: 35096, Stop: 34716, Start Num: 18

Candidate Starts for Lunahalos_43:

(11, 35132), (Start: 18 @35096 has 57 MA's), (Start: 20 @35060 has 3 MA's), (Start: 28 @35000 has 1 MA's), (39, 34841), (44, 34790), (48, 34742),

Gene: Malthus_48 Start: 35950, Stop: 35591, Start Num: 16

Candidate Starts for Malthus_48:

(6, 36019), (14, 35974), (Start: 16 @35950 has 12 MA's), (Start: 18 @35944 has 57 MA's), (Start: 20 @35905 has 3 MA's), (26, 35854), (30, 35785), (32, 35764), (34, 35743), (36, 35725), (46, 35623),

Gene: McMater_45 Start: 35648, Stop: 35256, Start Num: 17

Candidate Starts for McMater_45:

(17, 35648), (25, 35564), (Start: 28 @35549 has 1 MA's), (38, 35411), (40, 35387), (45, 35324), (47, 35300), (49, 35267),

Gene: MeaningOfLife_44 Start: 35907, Stop: 35530, Start Num: 18

Candidate Starts for MeaningOfLife_44:

(9, 35958), (Start: 18 @35907 has 57 MA's), (Start: 20 @35871 has 3 MA's), (Start: 28 @35811 has 1 MA's), (39, 35652), (44, 35604), (48, 35556),

Gene: MissDaisy_45 Start: 35425, Stop: 35069, Start Num: 16

Candidate Starts for MissDaisy_45:

(10, 35470), (13, 35452), (14, 35449), (Start: 16 @35425 has 12 MA's), (Start: 18 @35419 has 57 MA's), (Start: 20 @35380 has 3 MA's), (26, 35329), (32, 35239), (34, 35218), (36, 35200),

Gene: Mitti_47 Start: 36126, Stop: 35767, Start Num: 16

Candidate Starts for Mitti_47:

(6, 36195), (14, 36150), (Start: 16 @36126 has 12 MA's), (Start: 18 @36120 has 57 MA's), (Start: 20 @36081 has 3 MA's), (26, 36030), (30, 35961), (32, 35940), (34, 35919), (36, 35901), (46, 35799),

Gene: Padfoot_43 Start: 35293, Stop: 34913, Start Num: 18

Candidate Starts for Padfoot_43:

(11, 35329), (Start: 18 @35293 has 57 MA's), (Start: 20 @35257 has 3 MA's), (Start: 28 @35197 has 1 MA's), (39, 35038), (44, 34987), (48, 34939),

Gene: Padpat_44 Start: 34972, Stop: 34592, Start Num: 18

Candidate Starts for Padpat_44:

(11, 35008), (Start: 18 @34972 has 57 MA's), (Start: 20 @34936 has 3 MA's), (Start: 28 @34876 has 1 MA's), (44, 34666), (48, 34618),

Gene: Patt_44 Start: 35104, Stop: 34793, Start Num: 20

Candidate Starts for Patt_44:

(5, 35227), (6, 35218), (7, 35215), (8, 35209), (10, 35194), (13, 35176), (14, 35173), (Start: 16 @35149 has 12 MA's), (Start: 18 @35143 has 57 MA's), (Start: 20 @35104 has 3 MA's), (26, 35053), (32, 34963), (34, 34942), (36, 34924),

Gene: Peel_43 Start: 35098, Stop: 34718, Start Num: 18

Candidate Starts for Peel_43:

(11, 35134), (Start: 18 @35098 has 57 MA's), (Start: 20 @35062 has 3 MA's), (Start: 28 @35002 has 1 MA's), (39, 34843), (44, 34792), (48, 34744),

Gene: Piatt_43 Start: 35293, Stop: 34913, Start Num: 18

Candidate Starts for Piatt_43:

(11, 35329), (Start: 18 @35293 has 57 MA's), (Start: 20 @35257 has 3 MA's), (Start: 28 @35197 has 1 MA's), (39, 35038), (44, 34987), (48, 34939),

Gene: Pokerus_42 Start: 35018, Stop: 34638, Start Num: 18

Candidate Starts for Pokerus_42:

(Start: 18 @35018 has 57 MA's), (Start: 20 @34985 has 3 MA's), (24, 34958), (27, 34931), (Start: 28 @34925 has 1 MA's), (44, 34712), (48, 34664),

Gene: QuincyRose_42 Start: 35413, Stop: 35036, Start Num: 18

Candidate Starts for QuincyRose_42:

(9, 35464), (Start: 18 @35413 has 57 MA's), (Start: 20 @35377 has 3 MA's), (Start: 28 @35317 has 1 MA's), (39, 35158), (44, 35110), (48, 35062),

Gene: Ramen_43 Start: 34983, Stop: 34603, Start Num: 18

Candidate Starts for Ramen_43:

(11, 35019), (Start: 18 @34983 has 57 MA's), (Start: 20 @34947 has 3 MA's), (Start: 28 @34887 has 1 MA's), (44, 34677), (48, 34629),

Gene: Rapunzel97_43 Start: 34979, Stop: 34599, Start Num: 18

Candidate Starts for Rapunzel97_43:

(11, 35015), (Start: 18 @34979 has 57 MA's), (Start: 20 @34943 has 3 MA's), (Start: 28 @34883 has 1 MA's), (44, 34673), (48, 34625),

Gene: Richo_45 Start: 35648, Stop: 35256, Start Num: 17

Candidate Starts for Richo_45:

(17, 35648), (25, 35564), (Start: 28 @35549 has 1 MA's), (38, 35411), (40, 35387), (45, 35324), (47, 35300), (49, 35267),

Gene: Rosmarinus_43 Start: 35084, Stop: 34704, Start Num: 18

Candidate Starts for Rosmarinus_43:

(11, 35120), (Start: 18 @35084 has 57 MA's), (Start: 20 @35048 has 3 MA's), (Start: 28 @34988 has 1 MA's), (39, 34829), (44, 34778), (48, 34730),

Gene: Ruthiejr_48 Start: 36000, Stop: 35641, Start Num: 16

Candidate Starts for Ruthiejr_48:

(6, 36069), (14, 36024), (Start: 16 @36000 has 12 MA's), (Start: 18 @35994 has 57 MA's), (Start: 20 @35955 has 3 MA's), (26, 35904), (30, 35835), (32, 35814), (34, 35793), (36, 35775), (46, 35673),

Gene: SamScheppers_46 Start: 36429, Stop: 36070, Start Num: 16

Candidate Starts for SamScheppers_46:

(6, 36498), (14, 36453), (Start: 16 @36429 has 12 MA's), (Start: 18 @36423 has 57 MA's), (Start: 20 @36384 has 3 MA's), (26, 36333), (30, 36264), (32, 36243), (34, 36222), (36, 36204), (46, 36102),

Gene: ShiaSurprise_44 Start: 35293, Stop: 34913, Start Num: 18

Candidate Starts for ShiaSurprise_44:

(11, 35329), (Start: 18 @35293 has 57 MA's), (Start: 20 @35257 has 3 MA's), (Start: 28 @35197 has 1 MA's), (39, 35038), (44, 34987), (48, 34939),

Gene: Slarp_47 Start: 36038, Stop: 35679, Start Num: 16

Candidate Starts for Slarp_47:

(6, 36107), (14, 36062), (Start: 16 @36038 has 12 MA's), (Start: 18 @36032 has 57 MA's), (Start: 20 @35993 has 3 MA's), (26, 35942), (30, 35873), (32, 35852), (34, 35831), (36, 35813), (46, 35711),

Gene: Slimphazie_43 Start: 34979, Stop: 34599, Start Num: 18

Candidate Starts for Slimphazie_43:

(11, 35015), (Start: 18 @34979 has 57 MA's), (Start: 20 @34943 has 3 MA's), (Start: 28 @34883 has 1 MA's), (44, 34673), (48, 34625),

Gene: Spock_43 Start: 35097, Stop: 34717, Start Num: 18

Candidate Starts for Spock_43:

(11, 35133), (Start: 18 @35097 has 57 MA's), (Start: 20 @35061 has 3 MA's), (Start: 28 @35001 has 1 MA's), (39, 34842), (44, 34791), (48, 34743),

Gene: Tachez_43 Start: 34941, Stop: 34561, Start Num: 18

Candidate Starts for Tachez_43:

(11, 34977), (Start: 18 @34941 has 57 MA's), (Start: 20 @34905 has 3 MA's), (Start: 28 @34845 has 1 MA's), (44, 34635), (48, 34587),

Gene: Taquito_47 Start: 36279, Stop: 35926, Start Num: 18

Candidate Starts for Taquito_47:

(6, 36354), (14, 36309), (Start: 16 @36285 has 12 MA's), (Start: 18 @36279 has 57 MA's), (Start: 20 @36240 has 3 MA's), (26, 36189), (30, 36120), (32, 36099), (34, 36078), (36, 36060), (46, 35958),

Gene: Topper_43 Start: 35096, Stop: 34716, Start Num: 18

Candidate Starts for Topper_43:

(11, 35132), (Start: 18 @35096 has 57 MA's), (Start: 20 @35060 has 3 MA's), (Start: 28 @35000 has 1 MA's), (39, 34841), (44, 34790), (48, 34742),

Gene: TruffulaTree_43 Start: 34975, Stop: 34595, Start Num: 18

Candidate Starts for TruffulaTree_43:

(11, 35011), (Start: 18 @34975 has 57 MA's), (Start: 20 @34939 has 3 MA's), (Start: 28 @34879 has 1 MA's), (44, 34669), (48, 34621),

Gene: Twitch_43 Start: 35098, Stop: 34718, Start Num: 18

Candidate Starts for Twitch_43:

(11, 35134), (Start: 18 @35098 has 57 MA's), (Start: 20 @35062 has 3 MA's), (Start: 28 @35002 has 1 MA's), (39, 34843), (44, 34792), (48, 34744),

Gene: Veliki_43 Start: 35015, Stop: 34635, Start Num: 18

Candidate Starts for Veliki_43:

(11, 35051), (Start: 18 @35015 has 57 MA's), (Start: 20 @34979 has 3 MA's), (Start: 28 @34919 has 1 MA's), (44, 34709), (48, 34661),

Gene: Wintermute_47 Start: 36187, Stop: 35828, Start Num: 16

Candidate Starts for Wintermute_47:

(6, 36256), (14, 36211), (Start: 16 @36187 has 12 MA's), (Start: 18 @36181 has 57 MA's), (Start: 20 @36142 has 3 MA's), (26, 36091), (30, 36022), (32, 36001), (34, 35980), (36, 35962), (46, 35860),

Gene: Y10_46 Start: 36100, Stop: 35747, Start Num: 18

Candidate Starts for Y10_46:

(6, 36175), (14, 36130), (Start: 16 @36106 has 12 MA's), (Start: 18 @36100 has 57 MA's), (Start: 20 @36061 has 3 MA's), (26, 36010), (30, 35941), (32, 35920), (34, 35899), (36, 35881), (46, 35779),

Gene: Y2_46 Start: 36100, Stop: 35747, Start Num: 18

Candidate Starts for Y2_46:

(6, 36175), (14, 36130), (Start: 16 @36106 has 12 MA's), (Start: 18 @36100 has 57 MA's), (Start: 20 @36061 has 3 MA's), (26, 36010), (30, 35941), (32, 35920), (34, 35899), (36, 35881), (46, 35779),

Gene: YoureAdopted_42 Start: 35085, Stop: 34804, Start Num: 28

Candidate Starts for YoureAdopted_42:

(Start: 28 @35085 has 1 MA's), (44, 34878), (48, 34830),