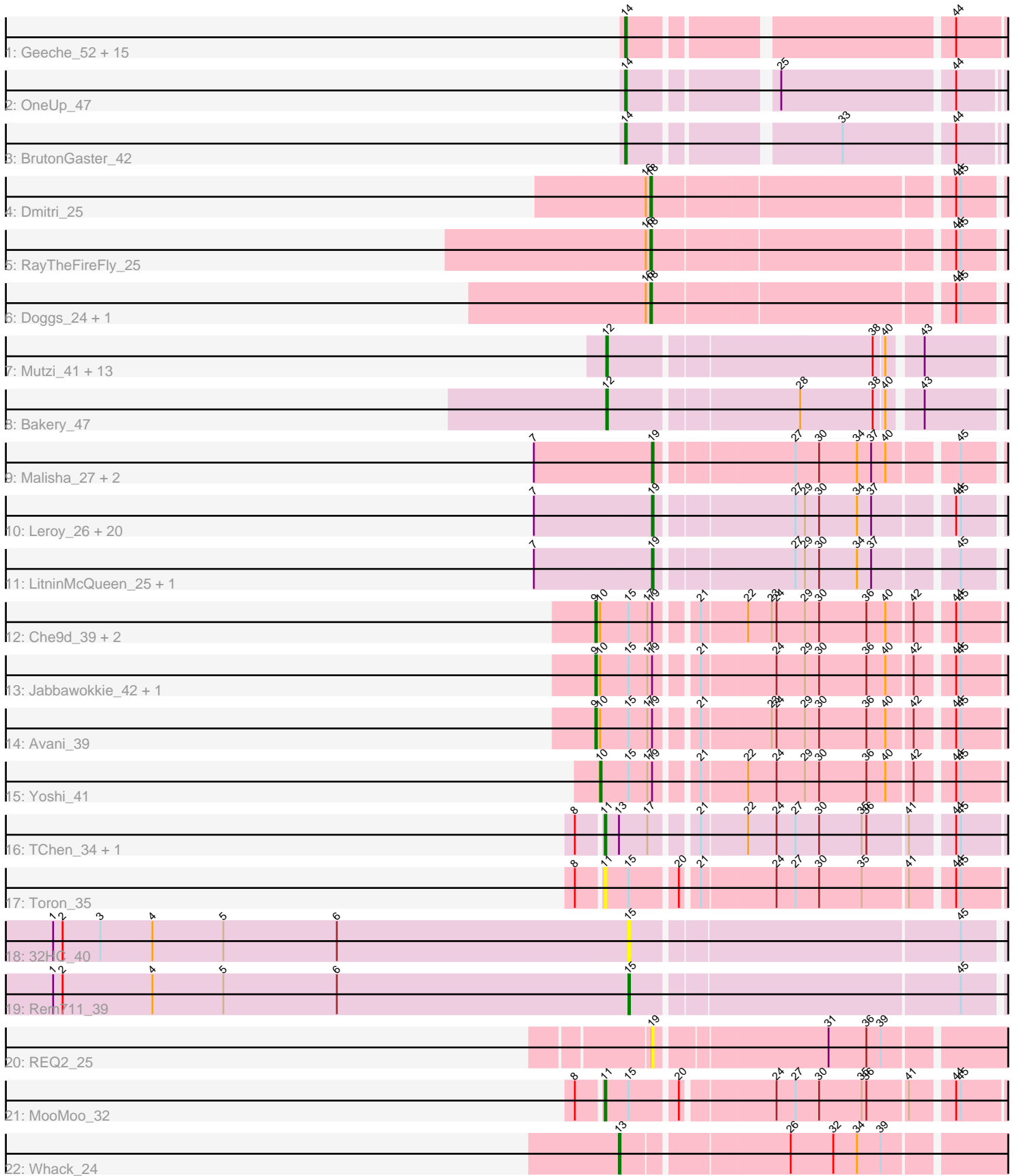


# Pham 196485



Note: Tracks are now grouped by subcluster and scaled. Switching in subcluster is indicated by changes in track color. Track scale is now set by default to display the region 30 bp upstream of start 1 to 30 bp downstream of the last possible start. If this default region is judged to be packed too tightly with annotated starts, the track will be further scaled to only show that region of the ORF with annotated starts. This action will be indicated by adding "Zoomed" to the title. For starts, yellow indicates the location of called starts comprised solely of Glimmer/GeneMark auto-annotations, green indicates the location of called starts with at least 1 manual gene annotation.

## Pham 196485 Report

This analysis was run 12/09/24 on database version 580.

Pham number 196485 has 78 members, 11 are drafts.

Phages represented in each track:

- Track 1 : Geeche\_52, Norvs\_54, Culver\_53, Dusty\_51, Smoothie\_55, ClubL\_53, WilliamBoone\_53, Cucurbita\_55, Engineer\_55, Miskis\_55, Lozinak\_54, Abscondus\_52, PhinkBoden\_53, Toniann\_53, Aphelion\_53, Bachita\_55
- Track 2 : OneUp\_47
- Track 3 : BrutonGaster\_42
- Track 4 : Dmitri\_25
- Track 5 : RayTheFireFly\_25
- Track 6 : Doggs\_24, Coriander\_25
- Track 7 : Mutzi\_41, Fireball\_43, Fugax\_45, PullumCavea\_41, YungMoney\_45, ClamChowder\_44, PinkCoffee\_44, Togo\_41, Nubi\_42, TillyBobJoe\_42, Shinji\_42, Phlop\_41, SmokingBunny\_42, Barb\_44
- Track 8 : Bakery\_47
- Track 9 : Malisha\_27, Spooky\_26, Squiddly\_28
- Track 10 : Leroy\_26, Apricot\_25, Budski\_26, Lutum\_26, MortyNRick\_25, Kuwabara\_25, Phabuloso\_25, Phistory\_27, Getalong\_27, BENtherdunthat\_26, Holliday\_26, CheeseTouch\_26, Kamaru\_26, Frickyeah\_25, Birdsong\_25, Kenna\_25, Horus\_26, Asapag\_26, Crater\_24, Whitney\_27, BearBQ\_25
- Track 11 : LitninMcQueen\_25, Periwinkle\_28
- Track 12 : Che9d\_39, ThetaBob\_34, Demsculpinboyz\_40
- Track 13 : Jabbawokkie\_42, Zapner\_41
- Track 14 : Avani\_39
- Track 15 : Yoshi\_41
- Track 16 : TChen\_34, LunaStella\_36
- Track 17 : Toron\_35
- Track 18 : 32HC\_40
- Track 19 : Rem711\_39
- Track 20 : REQ2\_25
- Track 21 : MooMoo\_32
- Track 22 : Whack\_24

### ***Summary of Final Annotations (See graph section above for start numbers):***

The start number called the most often in the published annotations is 19, it was called in 24 of the 67 non-draft genes in the pham.

Genes that call this "Most Annotated" start:

- Apricot\_25, Asapag\_26, BENtherdunthat\_26, BearBQ\_25, Birdsong\_25, Budski\_26, CheeseTouch\_26, Crater\_24, Frickyeah\_25, Getalong\_27, Holliday\_26, Horus\_26, Kamaru\_26, Kenna\_25, Kuwabara\_25, Leroy\_26, LitninMcQueen\_25, Lutum\_26, Malisha\_27, MortyNRick\_25, Periwinkle\_28, Phabuloso\_25, Phistory\_27, REQ2\_25, Spooky\_26, Squiddly\_28, Whitney\_27,

Genes that have the "Most Annotated" start but do not call it:

- Avani\_39, Che9d\_39, Demsculpinboyz\_40, Jabbawokkie\_42, ThetaBob\_34, Yoshi\_41, Zapner\_41,

Genes that do not have the "Most Annotated" start:

- 32HC\_40, Abscondus\_52, Aphelion\_53, Bachita\_55, Bakery\_47, Barb\_44, BrutonGaster\_42, ClamChowder\_44, ClubL\_53, Coriander\_25, Cucurbita\_55, Culver\_53, Dmitri\_25, Doggs\_24, Dusty\_51, Engineer\_55, Fireball\_43, Fugax\_45, Geeche\_52, Lozinak\_54, LunaStella\_36, Miskis\_55, MooMoo\_32, Mutzi\_41, Norvs\_54, Nubi\_42, OneUp\_47, PhinkBoden\_53, Phlop\_41, PinkCoffee\_44, PullumCavea\_41, RayTheFireFly\_25, Rem711\_39, Shinji\_42, SmokingBunny\_42, Smoothie\_55, TChen\_34, TillyBobJoe\_42, Togo\_41, Toniann\_53, Toron\_35, Whack\_24, WilliamBoone\_53, YungMoney\_45,

### Summary by start number:

Start 9:

- Found in 6 of 78 ( 7.7% ) of genes in pham
- Manual Annotations of this start: 6 of 67
- Called 100.0% of time when present
- Phage (with cluster) where this start called: Avani\_39 (F2), Che9d\_39 (F2), Demsculpinboyz\_40 (F2), Jabbawokkie\_42 (F2), ThetaBob\_34 (F4), Zapner\_41 (F2),

Start 10:

- Found in 7 of 78 ( 9.0% ) of genes in pham
- Manual Annotations of this start: 1 of 67
- Called 14.3% of time when present
- Phage (with cluster) where this start called: Yoshi\_41 (F2),

Start 11:

- Found in 4 of 78 ( 5.1% ) of genes in pham
- Manual Annotations of this start: 3 of 67
- Called 100.0% of time when present
- Phage (with cluster) where this start called: LunaStella\_36 (F4), MooMoo\_32 (singleton), TChen\_34 (F4), Toron\_35 (F6),

Start 12:

- Found in 15 of 78 ( 19.2% ) of genes in pham
- Manual Annotations of this start: 14 of 67
- Called 100.0% of time when present
- Phage (with cluster) where this start called: Bakery\_47 (DC1), Barb\_44 (DC1), ClamChowder\_44 (DC1), Fireball\_43 (DC1), Fugax\_45 (DC1), Mutzi\_41 (DC1), Nubi\_42 (DC1), Phlop\_41 (DC1), PinkCoffee\_44 (DC1), PullumCavea\_41 (DC1), Shinji\_42 (DC1), SmokingBunny\_42 (DC1), TillyBobJoe\_42 (DC1), Togo\_41 (DC1), YungMoney\_45 (DC1),

Start 13:

- Found in 3 of 78 ( 3.8% ) of genes in pham
- Manual Annotations of this start: 1 of 67
- Called 33.3% of time when present
- Phage (with cluster) where this start called: Whack\_24 (singleton),

Start 14:

- Found in 18 of 78 ( 23.1% ) of genes in pham
- Manual Annotations of this start: 14 of 67
- Called 100.0% of time when present
- Phage (with cluster) where this start called: Abscondus\_52 (CQ1), Aphelion\_53 (CQ1), Bachita\_55 (CQ1), BrutonGaster\_42 (CQ2), ClubL\_53 (CQ1), Cucurbita\_55 (CQ1), Culver\_53 (CQ1), Dusty\_51 (CQ1), Engineer\_55 (CQ1), Geeche\_52 (CQ1), Lozinak\_54 (CQ1), Miskis\_55 (CQ1), Norvs\_54 (CQ1), OneUp\_47 (CQ2), PhinkBoden\_53 (CQ1), Smoothie\_55 (CQ1), Toniann\_53 (CQ1), WilliamBoone\_53 (CQ1),

Start 15:

- Found in 11 of 78 ( 14.1% ) of genes in pham
- Manual Annotations of this start: 1 of 67
- Called 18.2% of time when present
- Phage (with cluster) where this start called: 32HC\_40 (Z), Rem711\_39 (Z),

Start 18:

- Found in 4 of 78 ( 5.1% ) of genes in pham
- Manual Annotations of this start: 3 of 67
- Called 100.0% of time when present
- Phage (with cluster) where this start called: Coriander\_25 (DB), Dmitri\_25 (DB), Doggs\_24 (DB), RayTheFireFly\_25 (DB),

Start 19:

- Found in 34 of 78 ( 43.6% ) of genes in pham
- Manual Annotations of this start: 24 of 67
- Called 79.4% of time when present
- Phage (with cluster) where this start called: Apricot\_25 (DN3), Asapag\_26 (DN1), BENTherdunthat\_26 (DN1), BearBQ\_25 (DN), Birdsong\_25 (DN), Budski\_26 (DN), CheeseTouch\_26 (DN1), Crater\_24 (DN3), Frickyeah\_25 (DN1), Getalong\_27 (DN1), Holliday\_26 (DN1), Horus\_26 (DN1), Kamaru\_26 (DN1), Kenna\_25 (DN1), Kuwabara\_25 (DN4), Leroy\_26 (DN1), LitninMcQueen\_25 (DN1), Lutum\_26 (DN1), Malisha\_27 (DN), MortyNRick\_25 (DN), Periwinkle\_28 (DN1), Phabuloso\_25 (DN1), Phistory\_27 (DN1), REQ2\_25 (singleton), Spooky\_26 (DN2), Squiddly\_28 (DN2), Whitney\_27 (DN1),

**Summary by clusters:**

There are 14 clusters represented in this pham: DN, F2, F4, F6, DB, singleton, DN4, DN1, DN3, DN2, CQ2, CQ1, Z, DC1,

Info for manual annotations of cluster CQ1:

- Start number 14 was manually annotated 12 times for cluster CQ1.

Info for manual annotations of cluster CQ2:

- Start number 14 was manually annotated 2 times for cluster CQ2.

Info for manual annotations of cluster DB:

- Start number 18 was manually annotated 3 times for cluster DB.

Info for manual annotations of cluster DC1:

- Start number 12 was manually annotated 14 times for cluster DC1.

Info for manual annotations of cluster DN:

- Start number 19 was manually annotated 4 times for cluster DN.

Info for manual annotations of cluster DN1:

- Start number 19 was manually annotated 15 times for cluster DN1.

Info for manual annotations of cluster DN2:

- Start number 19 was manually annotated 2 times for cluster DN2.

Info for manual annotations of cluster DN3:

- Start number 19 was manually annotated 2 times for cluster DN3.

Info for manual annotations of cluster DN4:

- Start number 19 was manually annotated 1 time for cluster DN4.

Info for manual annotations of cluster F2:

- Start number 9 was manually annotated 5 times for cluster F2.
- Start number 10 was manually annotated 1 time for cluster F2.

Info for manual annotations of cluster F4:

- Start number 9 was manually annotated 1 time for cluster F4.
- Start number 11 was manually annotated 2 times for cluster F4.

Info for manual annotations of cluster Z:

- Start number 15 was manually annotated 1 time for cluster Z.

### ***Gene Information:***

Gene: 32HC\_40 Start: 30479, Stop: 30703, Start Num: 15

Candidate Starts for 32HC\_40:

(1, 30116), (2, 30122), (3, 30146), (4, 30179), (5, 30224), (6, 30296), (Start: 15 @30479 has 1 MA's), (45, 30677),

Gene: Abscondus\_52 Start: 33342, Stop: 33560, Start Num: 14

Candidate Starts for Abscondus\_52:

(Start: 14 @33342 has 14 MA's), (44, 33528),

Gene: Aphelion\_53 Start: 33611, Stop: 33829, Start Num: 14

Candidate Starts for Aphelion\_53:

(Start: 14 @33611 has 14 MA's), (44, 33797),

Gene: Apricot\_25 Start: 20422, Stop: 20625, Start Num: 19

Candidate Starts for Apricot\_25:

(7, 20350), (Start: 19 @20422 has 24 MA's), (27, 20503), (29, 20509), (30, 20518), (34, 20542), (37, 20551), (44, 20596), (45, 20599),

Gene: Asapag\_26 Start: 20864, Stop: 21067, Start Num: 19

Candidate Starts for Asapag\_26:

(7, 20792), (Start: 19 @20864 has 24 MA's), (27, 20945), (29, 20951), (30, 20960), (34, 20984), (37, 20993), (44, 21038), (45, 21041),

Gene: Avani\_39 Start: 28553, Stop: 28789, Start Num: 9

Candidate Starts for Avani\_39:

(Start: 9 @28553 has 6 MA's), (Start: 10 @28556 has 1 MA's), (Start: 15 @28574 has 1 MA's), (17, 28586), (Start: 19 @28589 has 24 MA's), (21, 28610), (23, 28652), (24, 28655), (29, 28673), (30, 28682), (36, 28712), (40, 28724), (42, 28739), (44, 28760), (45, 28763),

Gene: BENtherdunthat\_26 Start: 20861, Stop: 21064, Start Num: 19

Candidate Starts for BENtherdunthat\_26:

(7, 20789), (Start: 19 @20861 has 24 MA's), (27, 20942), (29, 20948), (30, 20957), (34, 20981), (37, 20990), (44, 21035), (45, 21038),

Gene: Bachita\_55 Start: 34044, Stop: 34262, Start Num: 14

Candidate Starts for Bachita\_55:

(Start: 14 @34044 has 14 MA's), (44, 34230),

Gene: Bakery\_47 Start: 36845, Stop: 37081, Start Num: 12

Candidate Starts for Bakery\_47:

(Start: 12 @36845 has 14 MA's), (28, 36959), (38, 37004), (40, 37010), (43, 37028),

Gene: Barb\_44 Start: 35817, Stop: 36053, Start Num: 12

Candidate Starts for Barb\_44:

(Start: 12 @35817 has 14 MA's), (38, 35976), (40, 35982), (43, 36000),

Gene: BearBQ\_25 Start: 21701, Stop: 21904, Start Num: 19

Candidate Starts for BearBQ\_25:

(7, 21629), (Start: 19 @21701 has 24 MA's), (27, 21782), (29, 21788), (30, 21797), (34, 21821), (37, 21830), (44, 21875), (45, 21878),

Gene: Birdsong\_25 Start: 20594, Stop: 20797, Start Num: 19

Candidate Starts for Birdsong\_25:

(7, 20522), (Start: 19 @20594 has 24 MA's), (27, 20675), (29, 20681), (30, 20690), (34, 20714), (37, 20723), (44, 20768), (45, 20771),

Gene: BrutonGaster\_42 Start: 30728, Stop: 30943, Start Num: 14

Candidate Starts for BrutonGaster\_42:

(Start: 14 @30728 has 14 MA's), (33, 30848), (44, 30914),

Gene: Budski\_26 Start: 20969, Stop: 21172, Start Num: 19

Candidate Starts for Budski\_26:

(7, 20897), (Start: 19 @20969 has 24 MA's), (27, 21050), (29, 21056), (30, 21065), (34, 21089), (37, 21098), (44, 21143), (45, 21146),

Gene: Che9d\_39 Start: 28562, Stop: 28798, Start Num: 9

Candidate Starts for Che9d\_39:

(Start: 9 @28562 has 6 MA's), (Start: 10 @28565 has 1 MA's), (Start: 15 @28583 has 1 MA's), (17, 28595), (Start: 19 @28598 has 24 MA's), (21, 28619), (22, 28646), (23, 28661), (24, 28664), (29, 28682), (30, 28691), (36, 28721), (40, 28733), (42, 28748), (44, 28769), (45, 28772),

Gene: CheeseTouch\_26 Start: 20855, Stop: 21058, Start Num: 19

Candidate Starts for CheeseTouch\_26:

(7, 20783), (Start: 19 @20855 has 24 MA's), (27, 20936), (29, 20942), (30, 20951), (34, 20975), (37, 20984), (44, 21029), (45, 21032),

Gene: ClamChowder\_44 Start: 35817, Stop: 36053, Start Num: 12

Candidate Starts for ClamChowder\_44:

(Start: 12 @35817 has 14 MA's), (38, 35976), (40, 35982), (43, 36000),

Gene: ClubL\_53 Start: 33533, Stop: 33751, Start Num: 14

Candidate Starts for ClubL\_53:

(Start: 14 @33533 has 14 MA's), (44, 33719),

Gene: Coriander\_25 Start: 21895, Stop: 22101, Start Num: 18

Candidate Starts for Coriander\_25:

(16, 21892), (Start: 18 @21895 has 3 MA's), (44, 22072), (45, 22075),

Gene: Crater\_24 Start: 20422, Stop: 20625, Start Num: 19

Candidate Starts for Crater\_24:

(7, 20350), (Start: 19 @20422 has 24 MA's), (27, 20503), (29, 20509), (30, 20518), (34, 20542), (37, 20551), (44, 20596), (45, 20599),

Gene: Cucurbita\_55 Start: 34903, Stop: 35121, Start Num: 14

Candidate Starts for Cucurbita\_55:

(Start: 14 @34903 has 14 MA's), (44, 35089),

Gene: Culver\_53 Start: 33342, Stop: 33560, Start Num: 14

Candidate Starts for Culver\_53:

(Start: 14 @33342 has 14 MA's), (44, 33528),

Gene: Demsculpinboyz\_40 Start: 28495, Stop: 28731, Start Num: 9

Candidate Starts for Demsculpinboyz\_40:

(Start: 9 @28495 has 6 MA's), (Start: 10 @28498 has 1 MA's), (Start: 15 @28516 has 1 MA's), (17, 28528), (Start: 19 @28531 has 24 MA's), (21, 28552), (22, 28579), (23, 28594), (24, 28597), (29, 28615), (30, 28624), (36, 28654), (40, 28666), (42, 28681), (44, 28702), (45, 28705),

Gene: Dmitri\_25 Start: 21950, Stop: 22156, Start Num: 18

Candidate Starts for Dmitri\_25:

(16, 21947), (Start: 18 @21950 has 3 MA's), (44, 22127), (45, 22130),

Gene: Doggs\_24 Start: 21594, Stop: 21800, Start Num: 18

Candidate Starts for Doggs\_24:

(16, 21591), (Start: 18 @21594 has 3 MA's), (44, 21771), (45, 21774),

Gene: Dusty\_51 Start: 33342, Stop: 33560, Start Num: 14

Candidate Starts for Dusty\_51:

(Start: 14 @33342 has 14 MA's), (44, 33528),

Gene: Engineer\_55 Start: 34017, Stop: 34235, Start Num: 14

Candidate Starts for Engineer\_55:  
(Start: 14 @34017 has 14 MA's), (44, 34203),

Gene: Fireball\_43 Start: 35762, Stop: 35998, Start Num: 12  
Candidate Starts for Fireball\_43:  
(Start: 12 @35762 has 14 MA's), (38, 35921), (40, 35927), (43, 35945),

Gene: Frickyeah\_25 Start: 20627, Stop: 20830, Start Num: 19  
Candidate Starts for Frickyeah\_25:  
(7, 20555), (Start: 19 @20627 has 24 MA's), (27, 20708), (29, 20714), (30, 20723), (34, 20747), (37, 20756), (44, 20801), (45, 20804),

Gene: Fugax\_45 Start: 35809, Stop: 36045, Start Num: 12  
Candidate Starts for Fugax\_45:  
(Start: 12 @35809 has 14 MA's), (38, 35968), (40, 35974), (43, 35992),

Gene: Geeche\_52 Start: 33433, Stop: 33651, Start Num: 14  
Candidate Starts for Geeche\_52:  
(Start: 14 @33433 has 14 MA's), (44, 33619),

Gene: Getalong\_27 Start: 21664, Stop: 21867, Start Num: 19  
Candidate Starts for Getalong\_27:  
(7, 21592), (Start: 19 @21664 has 24 MA's), (27, 21745), (29, 21751), (30, 21760), (34, 21784), (37, 21793), (44, 21838), (45, 21841),

Gene: Holliday\_26 Start: 20969, Stop: 21172, Start Num: 19  
Candidate Starts for Holliday\_26:  
(7, 20897), (Start: 19 @20969 has 24 MA's), (27, 21050), (29, 21056), (30, 21065), (34, 21089), (37, 21098), (44, 21143), (45, 21146),

Gene: Horus\_26 Start: 20886, Stop: 21089, Start Num: 19  
Candidate Starts for Horus\_26:  
(7, 20814), (Start: 19 @20886 has 24 MA's), (27, 20967), (29, 20973), (30, 20982), (34, 21006), (37, 21015), (44, 21060), (45, 21063),

Gene: Jabbawokkie\_42 Start: 29943, Stop: 30179, Start Num: 9  
Candidate Starts for Jabbawokkie\_42:  
(Start: 9 @29943 has 6 MA's), (Start: 10 @29946 has 1 MA's), (Start: 15 @29964 has 1 MA's), (17, 29976), (Start: 19 @29979 has 24 MA's), (21, 30000), (24, 30045), (29, 30063), (30, 30072), (36, 30102), (40, 30114), (42, 30129), (44, 30150), (45, 30153),

Gene: Kamaru\_26 Start: 20969, Stop: 21172, Start Num: 19  
Candidate Starts for Kamaru\_26:  
(7, 20897), (Start: 19 @20969 has 24 MA's), (27, 21050), (29, 21056), (30, 21065), (34, 21089), (37, 21098), (44, 21143), (45, 21146),

Gene: Kenna\_25 Start: 20862, Stop: 21065, Start Num: 19  
Candidate Starts for Kenna\_25:  
(7, 20790), (Start: 19 @20862 has 24 MA's), (27, 20943), (29, 20949), (30, 20958), (34, 20982), (37, 20991), (44, 21036), (45, 21039),

Gene: Kuwabara\_25 Start: 20288, Stop: 20491, Start Num: 19  
Candidate Starts for Kuwabara\_25:



(7, 20216), (Start: 19 @20288 has 24 MA's), (27, 20369), (29, 20375), (30, 20384), (34, 20408), (37, 20417), (44, 20462), (45, 20465),

Gene: Leroy\_26 Start: 20887, Stop: 21090, Start Num: 19

Candidate Starts for Leroy\_26:

(7, 20815), (Start: 19 @20887 has 24 MA's), (27, 20968), (29, 20974), (30, 20983), (34, 21007), (37, 21016), (44, 21061), (45, 21064),

Gene: LitninMcQueen\_25 Start: 20618, Stop: 20821, Start Num: 19

Candidate Starts for LitninMcQueen\_25:

(7, 20546), (Start: 19 @20618 has 24 MA's), (27, 20699), (29, 20705), (30, 20714), (34, 20738), (37, 20747), (45, 20795),

Gene: Lozinak\_54 Start: 34072, Stop: 34290, Start Num: 14

Candidate Starts for Lozinak\_54:

(Start: 14 @34072 has 14 MA's), (44, 34258),

Gene: LunaStella\_36 Start: 29841, Stop: 30074, Start Num: 11

Candidate Starts for LunaStella\_36:

(8, 29826), (Start: 11 @29841 has 3 MA's), (Start: 13 @29850 has 1 MA's), (17, 29868), (21, 29892), (22, 29919), (24, 29937), (27, 29949), (30, 29964), (35, 29991), (36, 29994), (41, 30018), (44, 30042), (45, 30045),

Gene: Lutum\_26 Start: 20862, Stop: 21065, Start Num: 19

Candidate Starts for Lutum\_26:

(7, 20790), (Start: 19 @20862 has 24 MA's), (27, 20943), (29, 20949), (30, 20958), (34, 20982), (37, 20991), (44, 21036), (45, 21039),

Gene: Malisha\_27 Start: 22747, Stop: 22950, Start Num: 19

Candidate Starts for Malisha\_27:

(7, 22675), (Start: 19 @22747 has 24 MA's), (27, 22828), (30, 22843), (34, 22867), (37, 22876), (40, 22885), (45, 22924),

Gene: Miskis\_55 Start: 33377, Stop: 33595, Start Num: 14

Candidate Starts for Miskis\_55:

(Start: 14 @33377 has 14 MA's), (44, 33563),

Gene: MooMoo\_32 Start: 28388, Stop: 28621, Start Num: 11

Candidate Starts for MooMoo\_32:

(8, 28373), (Start: 11 @28388 has 3 MA's), (Start: 15 @28403 has 1 MA's), (20, 28430), (24, 28484), (27, 28496), (30, 28511), (35, 28538), (36, 28541), (41, 28565), (44, 28589), (45, 28592),

Gene: MortyNRick\_25 Start: 20594, Stop: 20797, Start Num: 19

Candidate Starts for MortyNRick\_25:

(7, 20522), (Start: 19 @20594 has 24 MA's), (27, 20675), (29, 20681), (30, 20690), (34, 20714), (37, 20723), (44, 20768), (45, 20771),

Gene: Mutzi\_41 Start: 36497, Stop: 36733, Start Num: 12

Candidate Starts for Mutzi\_41:

(Start: 12 @36497 has 14 MA's), (38, 36656), (40, 36662), (43, 36680),

Gene: Norvs\_54 Start: 33616, Stop: 33834, Start Num: 14

Candidate Starts for Norvs\_54:

(Start: 14 @33616 has 14 MA's), (44, 33802),

Gene: Nubi\_42 Start: 35642, Stop: 35878, Start Num: 12

Candidate Starts for Nubi\_42:

(Start: 12 @35642 has 14 MA's), (38, 35801), (40, 35807), (43, 35825),

Gene: OneUp\_47 Start: 31052, Stop: 31267, Start Num: 14

Candidate Starts for OneUp\_47:

(Start: 14 @31052 has 14 MA's), (25, 31133), (44, 31238),

Gene: Periwinkle\_28 Start: 21331, Stop: 21534, Start Num: 19

Candidate Starts for Periwinkle\_28:

(7, 21259), (Start: 19 @21331 has 24 MA's), (27, 21412), (29, 21418), (30, 21427), (34, 21451), (37, 21460), (45, 21508),

Gene: Phabuloso\_25 Start: 20618, Stop: 20821, Start Num: 19

Candidate Starts for Phabuloso\_25:

(7, 20546), (Start: 19 @20618 has 24 MA's), (27, 20699), (29, 20705), (30, 20714), (34, 20738), (37, 20747), (44, 20792), (45, 20795),

Gene: PhinkBoden\_53 Start: 33997, Stop: 34215, Start Num: 14

Candidate Starts for PhinkBoden\_53:

(Start: 14 @33997 has 14 MA's), (44, 34183),

Gene: Phistory\_27 Start: 21652, Stop: 21855, Start Num: 19

Candidate Starts for Phistory\_27:

(7, 21580), (Start: 19 @21652 has 24 MA's), (27, 21733), (29, 21739), (30, 21748), (34, 21772), (37, 21781), (44, 21826), (45, 21829),

Gene: Phlop\_41 Start: 35723, Stop: 35959, Start Num: 12

Candidate Starts for Phlop\_41:

(Start: 12 @35723 has 14 MA's), (38, 35882), (40, 35888), (43, 35906),

Gene: PinkCoffee\_44 Start: 35826, Stop: 36062, Start Num: 12

Candidate Starts for PinkCoffee\_44:

(Start: 12 @35826 has 14 MA's), (38, 35985), (40, 35991), (43, 36009),

Gene: PullumCavea\_41 Start: 35723, Stop: 35959, Start Num: 12

Candidate Starts for PullumCavea\_41:

(Start: 12 @35723 has 14 MA's), (38, 35882), (40, 35888), (43, 35906),

Gene: REQ2\_25 Start: 22322, Stop: 22531, Start Num: 19

Candidate Starts for REQ2\_25:

(Start: 19 @22322 has 24 MA's), (31, 22424), (36, 22448), (39, 22457),

Gene: RayTheFireFly\_25 Start: 21927, Stop: 22133, Start Num: 18

Candidate Starts for RayTheFireFly\_25:

(16, 21924), (Start: 18 @21927 has 3 MA's), (44, 22104), (45, 22107),

Gene: Rem711\_39 Start: 30460, Stop: 30684, Start Num: 15

Candidate Starts for Rem711\_39:

(1, 30097), (2, 30103), (4, 30160), (5, 30205), (6, 30277), (Start: 15 @30460 has 1 MA's), (45, 30658),

Gene: Shinji\_42 Start: 35079, Stop: 35315, Start Num: 12  
Candidate Starts for Shinji\_42:  
(Start: 12 @35079 has 14 MA's), (38, 35238), (40, 35244), (43, 35262),

Gene: SmokingBunny\_42 Start: 35628, Stop: 35864, Start Num: 12  
Candidate Starts for SmokingBunny\_42:  
(Start: 12 @35628 has 14 MA's), (38, 35787), (40, 35793), (43, 35811),

Gene: Smoothie\_55 Start: 34072, Stop: 34290, Start Num: 14  
Candidate Starts for Smoothie\_55:  
(Start: 14 @34072 has 14 MA's), (44, 34258),

Gene: Spooky\_26 Start: 20956, Stop: 21159, Start Num: 19  
Candidate Starts for Spooky\_26:  
(7, 20884), (Start: 19 @20956 has 24 MA's), (27, 21037), (30, 21052), (34, 21076), (37, 21085), (40, 21094), (45, 21133),

Gene: Squiddly\_28 Start: 22368, Stop: 22571, Start Num: 19  
Candidate Starts for Squiddly\_28:  
(7, 22296), (Start: 19 @22368 has 24 MA's), (27, 22449), (30, 22464), (34, 22488), (37, 22497), (40, 22506), (45, 22545),

Gene: TChen\_34 Start: 29842, Stop: 30075, Start Num: 11  
Candidate Starts for TChen\_34:  
(8, 29827), (Start: 11 @29842 has 3 MA's), (Start: 13 @29851 has 1 MA's), (17, 29869), (21, 29893), (22, 29920), (24, 29938), (27, 29950), (30, 29965), (35, 29992), (36, 29995), (41, 30019), (44, 30043), (45, 30046),

Gene: ThetaBob\_34 Start: 28787, Stop: 29023, Start Num: 9  
Candidate Starts for ThetaBob\_34:  
(Start: 9 @28787 has 6 MA's), (Start: 10 @28790 has 1 MA's), (Start: 15 @28808 has 1 MA's), (17, 28820), (Start: 19 @28823 has 24 MA's), (21, 28844), (22, 28871), (23, 28886), (24, 28889), (29, 28907), (30, 28916), (36, 28946), (40, 28958), (42, 28973), (44, 28994), (45, 28997),

Gene: TillyBobJoe\_42 Start: 35432, Stop: 35668, Start Num: 12  
Candidate Starts for TillyBobJoe\_42:  
(Start: 12 @35432 has 14 MA's), (38, 35591), (40, 35597), (43, 35615),

Gene: Togo\_41 Start: 35628, Stop: 35864, Start Num: 12  
Candidate Starts for Togo\_41:  
(Start: 12 @35628 has 14 MA's), (38, 35787), (40, 35793), (43, 35811),

Gene: Toniann\_53 Start: 33559, Stop: 33777, Start Num: 14  
Candidate Starts for Toniann\_53:  
(Start: 14 @33559 has 14 MA's), (44, 33745),

Gene: Toron\_35 Start: 29685, Stop: 29918, Start Num: 11  
Candidate Starts for Toron\_35:  
(8, 29670), (Start: 11 @29685 has 3 MA's), (Start: 15 @29700 has 1 MA's), (20, 29727), (21, 29736), (24, 29781), (27, 29793), (30, 29808), (35, 29835), (41, 29862), (44, 29886), (45, 29889),

Gene: Whack\_24 Start: 21206, Stop: 21436, Start Num: 13  
Candidate Starts for Whack\_24:

(Start: 13 @21206 has 1 MA's), (26, 21305), (32, 21332), (34, 21347), (39, 21362),

Gene: Whitney\_27 Start: 21773, Stop: 21976, Start Num: 19

Candidate Starts for Whitney\_27:

(7, 21701), (Start: 19 @21773 has 24 MA's), (27, 21854), (29, 21860), (30, 21869), (34, 21893), (37, 21902), (44, 21947), (45, 21950),

Gene: WilliamBoone\_53 Start: 32911, Stop: 33129, Start Num: 14

Candidate Starts for WilliamBoone\_53:

(Start: 14 @32911 has 14 MA's), (44, 33097),

Gene: Yoshi\_41 Start: 28866, Stop: 29099, Start Num: 10

Candidate Starts for Yoshi\_41:

(Start: 10 @28866 has 1 MA's), (Start: 15 @28884 has 1 MA's), (17, 28896), (Start: 19 @28899 has 24 MA's), (21, 28920), (22, 28947), (24, 28965), (29, 28983), (30, 28992), (36, 29022), (40, 29034), (42, 29049), (44, 29070), (45, 29073),

Gene: YungMoney\_45 Start: 38071, Stop: 38307, Start Num: 12

Candidate Starts for YungMoney\_45:

(Start: 12 @38071 has 14 MA's), (38, 38230), (40, 38236), (43, 38254),

Gene: Zapner\_41 Start: 29944, Stop: 30180, Start Num: 9

Candidate Starts for Zapner\_41:

(Start: 9 @29944 has 6 MA's), (Start: 10 @29947 has 1 MA's), (Start: 15 @29965 has 1 MA's), (17, 29977), (Start: 19 @29980 has 24 MA's), (21, 30001), (24, 30046), (29, 30064), (30, 30073), (36, 30103), (40, 30115), (42, 30130), (44, 30151), (45, 30154),