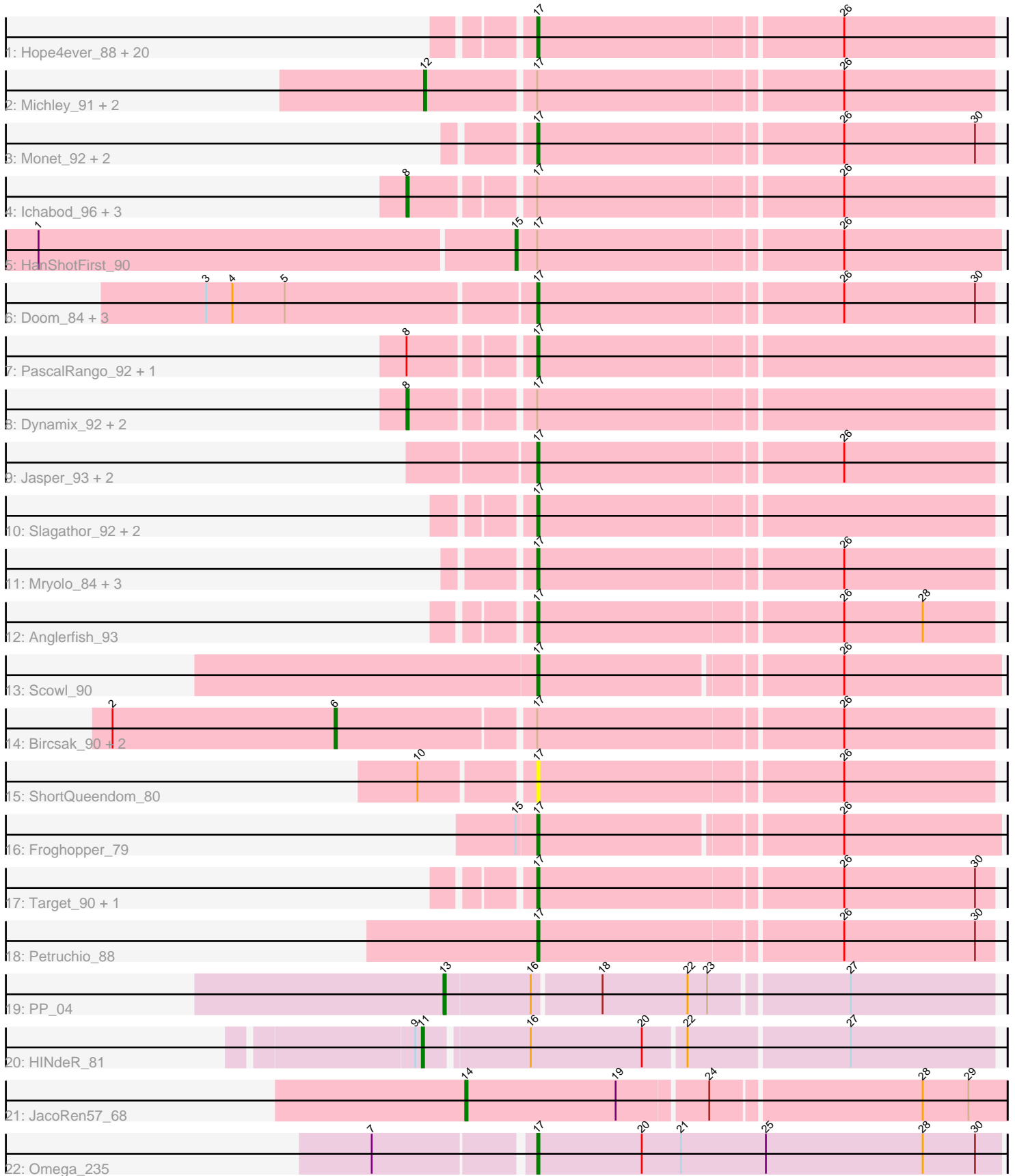


Pham 196534



Note: Tracks are now grouped by subcluster and scaled. Switching in subcluster is indicated by changes in track color. Track scale is now set by default to display the region 30 bp upstream of start 1 to 30 bp downstream of the last possible start. If this default region is judged to be packed too tightly with annotated starts, the track will be further scaled to only show that region of the ORF with annotated starts. This action will be indicated by adding "Zoomed" to the title. For starts, yellow indicates the location of called starts comprised solely of Glimmer/GeneMark auto-annotations, green indicates the location of called starts with at least 1 manual gene annotation.

Pham 196534 Report

This analysis was run 12/09/24 on database version 580.

Pham number 196534 has 65 members, 4 are drafts.

Phages represented in each track:

- Track 1 : Hope4ever_88, Museum_90, MaryBeth_91, Petp2012_89, MetalQZJ_88, BillKnuckles_86, STLscum_100, Corvo_94, Bethlehem_87, DrFeelGood_85, Turj99_86, Hermia_84, SwissCheese_95, Sibs6_95, Traft412_86, Atkinbua_98, Burton_90, Sanya_81, Pelly_94, ConceptII_97, Euphoria_95
- Track 2 : Michley_91, Papez_93, Graduation_93
- Track 3 : Monet_92, Inyanga_82, Homines_83
- Track 4 : Ichabod_96, Thor_98, BPBiebs31_97, SarFire_98
- Track 5 : HanShotFirst_90
- Track 6 : Doom_84, KBG_87, Molly_89, TwoPeat_88
- Track 7 : PascalRango_92, Manatee_92
- Track 8 : Dynamix_92, Briton15_95, Switzer_91
- Track 9 : Jasper_93, Dreamboat_93, BeesKnees_95
- Track 10 : Slagathor_92, Pinto_87, Norz_90
- Track 11 : Mryolo_84, Teodoridan_93, Marchy_81, Payneful_77
- Track 12 : Anglerfish_93
- Track 13 : Scowl_90
- Track 14 : Bircsak_90, Gwendoluna_91, Gompeii16_90
- Track 15 : ShortQueendom_80
- Track 16 : Froghopper_79
- Track 17 : Target_90, KyMonks1A_96
- Track 18 : Petruccio_88
- Track 19 : PP_04
- Track 20 : HINdeR_81
- Track 21 : JacoRen57_68
- Track 22 : Omega_235

Summary of Final Annotations (See graph section above for start numbers):

The start number called the most often in the published annotations is 17, it was called in 44 of the 61 non-draft genes in the pham.

Genes that call this "Most Annotated" start:

- Anglerfish_93, Atkinbua_98, BeesKnees_95, Bethlehem_87, BillKnuckles_86, Burton_90, ConceptII_97, Corvo_94, Doom_84, DrFeelGood_85, Dreamboat_93,

Euphoria_95, Froghopper_79, Hermia_84, Homines_83, Hope4ever_88, Inyanga_82, Jasper_93, KBG_87, KyMonks1A_96, Manatee_92, Marchy_81, MaryBeth_91, MetalQZJ_88, Molly_89, Monet_92, Mryolo_84, Museum_90, Norz_90, Omega_235, PascalRango_92, Payneful_77, Pelly_94, Petp2012_89, Petruccio_88, Pinto_87, STLscum_100, Sanya_81, Scowl_90, ShortQueendom_80, Sibs6_95, Slagathor_92, SwissCheese_95, Target_90, Teodoridan_93, Traft412_86, Turj99_86, TwoPeat_88,

Genes that have the "Most Annotated" start but do not call it:

- BPBiabs31_97, Bircsak_90, Briton15_95, Dynamix_92, Gompeii16_90, Graduation_93, Gwendoluna_91, HanShotFirst_90, Ichabod_96, Michley_91, Papez_93, SarFire_98, Switzer_91, Thor_98,

Genes that do not have the "Most Annotated" start:

- HINdeR_81, JacoRen57_68, PP_04,

Summary by start number:

Start 6:

- Found in 3 of 65 (4.6%) of genes in pham
- Manual Annotations of this start: 3 of 61
- Called 100.0% of time when present
- Phage (with cluster) where this start called: Bircsak_90 (A1), Gompeii16_90 (A1), Gwendoluna_91 (A1),

Start 8:

- Found in 9 of 65 (13.8%) of genes in pham
- Manual Annotations of this start: 7 of 61
- Called 77.8% of time when present
- Phage (with cluster) where this start called: BPBiabs31_97 (A1), Briton15_95 (A1), Dynamix_92 (A1), Ichabod_96 (A1), SarFire_98 (A1), Switzer_91 (A1), Thor_98 (A1),

Start 11:

- Found in 1 of 65 (1.5%) of genes in pham
- Manual Annotations of this start: 1 of 61
- Called 100.0% of time when present
- Phage (with cluster) where this start called: HINdeR_81 (A7),

Start 12:

- Found in 3 of 65 (4.6%) of genes in pham
- Manual Annotations of this start: 3 of 61
- Called 100.0% of time when present
- Phage (with cluster) where this start called: Graduation_93 (A1), Michley_91 (A1), Papez_93 (A1),

Start 13:

- Found in 1 of 65 (1.5%) of genes in pham
- Manual Annotations of this start: 1 of 61
- Called 100.0% of time when present
- Phage (with cluster) where this start called: PP_04 (A7),

Start 14:

- Found in 1 of 65 (1.5%) of genes in pham
- Manual Annotations of this start: 1 of 61

- Called 100.0% of time when present
- Phage (with cluster) where this start called: JacoRen57_68 (AB),

Start 15:

- Found in 2 of 65 (3.1%) of genes in pham
- Manual Annotations of this start: 1 of 61
- Called 50.0% of time when present
- Phage (with cluster) where this start called: HanShotFirst_90 (A1),

Start 17:

- Found in 62 of 65 (95.4%) of genes in pham
- Manual Annotations of this start: 44 of 61
- Called 77.4% of time when present
- Phage (with cluster) where this start called: Anglerfish_93 (A1), Atkinbua_98 (A1), BeesKnees_95 (A1), Bethlehem_87 (A1), BillKnuckles_86 (A1), Burton_90 (A1), ConceptII_97 (A1), Corvo_94 (A1), Doom_84 (A1), DrFeelGood_85 (A1), Dreamboat_93 (A1), Euphoria_95 (A1), Froghopper_79 (A1), Hermia_84 (A1), Homines_83 (A1), Hope4ever_88 (A1), Inyanga_82 (A1), Jasper_93 (A1), KBG_87 (A1), KyMonks1A_96 (A1), Manatee_92 (A1), Marchy_81 (A1), MaryBeth_91 (A1), MetalQZJ_88 (A1), Molly_89 (A1), Monet_92 (A1), Mryolo_84 (A1), Museum_90 (A1), Norz_90 (A1), Omega_235 (J), PascalRango_92 (A1), Payneful_77 (A1), Pelly_94 (A1), Petp2012_89 (A1), Petruccio_88 (A1), Pinto_87 (A1), STLscum_100 (A1), Sanya_81 (A1), Scowl_90 (A1), ShortQueendom_80 (A1), Sibs6_95 (A1), Slagathor_92 (A1), SwissCheese_95 (A1), Target_90 (A1), Teodoridan_93 (A1), Traft412_86 (A1), Turj99_86 (A1), TwoPeat_88 (A1),

Summary by clusters:

There are 4 clusters represented in this pham: A1, J, AB, A7,

Info for manual annotations of cluster A1:

- Start number 6 was manually annotated 3 times for cluster A1.
- Start number 8 was manually annotated 7 times for cluster A1.
- Start number 12 was manually annotated 3 times for cluster A1.
- Start number 15 was manually annotated 1 time for cluster A1.
- Start number 17 was manually annotated 43 times for cluster A1.

Info for manual annotations of cluster A7:

- Start number 11 was manually annotated 1 time for cluster A7.
- Start number 13 was manually annotated 1 time for cluster A7.

Info for manual annotations of cluster AB:

- Start number 14 was manually annotated 1 time for cluster AB.

Info for manual annotations of cluster J:

- Start number 17 was manually annotated 1 time for cluster J.

Gene Information:

Gene: Anglerfish_93 Start: 51993, Stop: 51790, Start Num: 17

Candidate Starts for Anglerfish_93:

(Start: 17 @51993 has 44 MA's), (26, 51858), (28, 51822),

Gene: Atkinbua_98 Start: 52558, Stop: 52355, Start Num: 17

Candidate Starts for Atkinbua_98:

(Start: 17 @52558 has 44 MA's), (26, 52423),

Gene: BPBiebs31_97 Start: 52824, Stop: 52570, Start Num: 8

Candidate Starts for BPBiebs31_97:

(Start: 8 @52824 has 7 MA's), (Start: 17 @52773 has 44 MA's), (26, 52638),

Gene: BeesKnees_95 Start: 51081, Stop: 50878, Start Num: 17

Candidate Starts for BeesKnees_95:

(Start: 17 @51081 has 44 MA's), (26, 50946),

Gene: Bethlehem_87 Start: 51847, Stop: 51644, Start Num: 17

Candidate Starts for Bethlehem_87:

(Start: 17 @51847 has 44 MA's), (26, 51712),

Gene: BillKnuckles_86 Start: 51482, Stop: 51279, Start Num: 17

Candidate Starts for BillKnuckles_86:

(Start: 17 @51482 has 44 MA's), (26, 51347),

Gene: Bircsak_90 Start: 52909, Stop: 52619, Start Num: 6

Candidate Starts for Bircsak_90:

(2, 53011), (Start: 6 @52909 has 3 MA's), (Start: 17 @52822 has 44 MA's), (26, 52687),

Gene: Briton15_95 Start: 52689, Stop: 52435, Start Num: 8

Candidate Starts for Briton15_95:

(Start: 8 @52689 has 7 MA's), (Start: 17 @52638 has 44 MA's),

Gene: Burton_90 Start: 52230, Stop: 52027, Start Num: 17

Candidate Starts for Burton_90:

(Start: 17 @52230 has 44 MA's), (26, 52095),

Gene: ConceptII_97 Start: 52890, Stop: 52687, Start Num: 17

Candidate Starts for ConceptII_97:

(Start: 17 @52890 has 44 MA's), (26, 52755),

Gene: Corvo_94 Start: 52995, Stop: 52792, Start Num: 17

Candidate Starts for Corvo_94:

(Start: 17 @52995 has 44 MA's), (26, 52860),

Gene: Doom_84 Start: 50622, Stop: 50419, Start Num: 17

Candidate Starts for Doom_84:

(3, 50769), (4, 50757), (5, 50733), (Start: 17 @50622 has 44 MA's), (26, 50487), (30, 50427),

Gene: DrFeelGood_85 Start: 49766, Stop: 49563, Start Num: 17

Candidate Starts for DrFeelGood_85:

(Start: 17 @49766 has 44 MA's), (26, 49631),

Gene: Dreamboat_93 Start: 50459, Stop: 50256, Start Num: 17

Candidate Starts for Dreamboat_93:

(Start: 17 @50459 has 44 MA's), (26, 50324),

Gene: Dynamix_92 Start: 50284, Stop: 50030, Start Num: 8
Candidate Starts for Dynamix_92:
(Start: 8 @50284 has 7 MA's), (Start: 17 @50233 has 44 MA's),

Gene: Euphoria_95 Start: 53188, Stop: 52985, Start Num: 17
Candidate Starts for Euphoria_95:
(Start: 17 @53188 has 44 MA's), (26, 53053),

Gene: Froghopper_79 Start: 47225, Stop: 47428, Start Num: 17
Candidate Starts for Froghopper_79:
(Start: 15 @47216 has 1 MA's), (Start: 17 @47225 has 44 MA's), (26, 47357),

Gene: Gompeii16_90 Start: 52910, Stop: 52620, Start Num: 6
Candidate Starts for Gompeii16_90:
(2, 53012), (Start: 6 @52910 has 3 MA's), (Start: 17 @52823 has 44 MA's), (26, 52688),

Gene: Graduation_93 Start: 51162, Stop: 50911, Start Num: 12
Candidate Starts for Graduation_93:
(Start: 12 @51162 has 3 MA's), (Start: 17 @51114 has 44 MA's), (26, 50979),

Gene: Gwendoluna_91 Start: 51399, Stop: 51109, Start Num: 6
Candidate Starts for Gwendoluna_91:
(2, 51501), (Start: 6 @51399 has 3 MA's), (Start: 17 @51312 has 44 MA's), (26, 51177),

Gene: HINdeR_81 Start: 50361, Stop: 50110, Start Num: 11
Candidate Starts for HINdeR_81:
(9, 50364), (Start: 11 @50361 has 1 MA's), (16, 50316), (20, 50265), (22, 50247), (27, 50175),

Gene: HanShotFirst_90 Start: 51379, Stop: 51594, Start Num: 15
Candidate Starts for HanShotFirst_90:
(1, 51163), (Start: 15 @51379 has 1 MA's), (Start: 17 @51388 has 44 MA's), (26, 51523),

Gene: Hermia_84 Start: 49274, Stop: 49071, Start Num: 17
Candidate Starts for Hermia_84:
(Start: 17 @49274 has 44 MA's), (26, 49139),

Gene: Homines_83 Start: 46852, Stop: 47055, Start Num: 17
Candidate Starts for Homines_83:
(Start: 17 @46852 has 44 MA's), (26, 46987), (30, 47047),

Gene: Hope4ever_88 Start: 50126, Stop: 49923, Start Num: 17
Candidate Starts for Hope4ever_88:
(Start: 17 @50126 has 44 MA's), (26, 49991),

Gene: Ichabod_96 Start: 52974, Stop: 52720, Start Num: 8
Candidate Starts for Ichabod_96:
(Start: 8 @52974 has 7 MA's), (Start: 17 @52923 has 44 MA's), (26, 52788),

Gene: Inyanga_82 Start: 49164, Stop: 49367, Start Num: 17
Candidate Starts for Inyanga_82:
(Start: 17 @49164 has 44 MA's), (26, 49299), (30, 49359),

Gene: JacoRen57_68 Start: 49553, Stop: 49792, Start Num: 14
Candidate Starts for JacoRen57_68:
(Start: 14 @49553 has 1 MA's), (19, 49622), (24, 49661), (28, 49754), (29, 49775),

Gene: Jasper_93 Start: 50345, Stop: 50142, Start Num: 17
Candidate Starts for Jasper_93:
(Start: 17 @50345 has 44 MA's), (26, 50210),

Gene: KBG_87 Start: 52193, Stop: 51990, Start Num: 17
Candidate Starts for KBG_87:
(3, 52340), (4, 52328), (5, 52304), (Start: 17 @52193 has 44 MA's), (26, 52058), (30, 51998),

Gene: KyMonks1A_96 Start: 51763, Stop: 51560, Start Num: 17
Candidate Starts for KyMonks1A_96:
(Start: 17 @51763 has 44 MA's), (26, 51628), (30, 51568),

Gene: Manatee_92 Start: 50646, Stop: 50443, Start Num: 17
Candidate Starts for Manatee_92:
(Start: 8 @50697 has 7 MA's), (Start: 17 @50646 has 44 MA's),

Gene: Marchy_81 Start: 47255, Stop: 47052, Start Num: 17
Candidate Starts for Marchy_81:
(Start: 17 @47255 has 44 MA's), (26, 47120),

Gene: MaryBeth_91 Start: 51469, Stop: 51266, Start Num: 17
Candidate Starts for MaryBeth_91:
(Start: 17 @51469 has 44 MA's), (26, 51334),

Gene: MetalQZJ_88 Start: 51469, Stop: 51266, Start Num: 17
Candidate Starts for MetalQZJ_88:
(Start: 17 @51469 has 44 MA's), (26, 51334),

Gene: Michley_91 Start: 50597, Stop: 50346, Start Num: 12
Candidate Starts for Michley_91:
(Start: 12 @50597 has 3 MA's), (Start: 17 @50549 has 44 MA's), (26, 50414),

Gene: Molly_89 Start: 49678, Stop: 49475, Start Num: 17
Candidate Starts for Molly_89:
(3, 49825), (4, 49813), (5, 49789), (Start: 17 @49678 has 44 MA's), (26, 49543), (30, 49483),

Gene: Monet_92 Start: 51735, Stop: 51938, Start Num: 17
Candidate Starts for Monet_92:
(Start: 17 @51735 has 44 MA's), (26, 51870), (30, 51930),

Gene: Mryolo_84 Start: 48769, Stop: 48972, Start Num: 17
Candidate Starts for Mryolo_84:
(Start: 17 @48769 has 44 MA's), (26, 48904),

Gene: Museum_90 Start: 51040, Stop: 50837, Start Num: 17
Candidate Starts for Museum_90:
(Start: 17 @51040 has 44 MA's), (26, 50905),

Gene: Norz_90 Start: 53476, Stop: 53273, Start Num: 17

Candidate Starts for Norz_90:
(Start: 17 @53476 has 44 MA's),

Gene: Omega_235 Start: 109887, Stop: 109675, Start Num: 17
Candidate Starts for Omega_235:
(7, 109956), (Start: 17 @109887 has 44 MA's), (20, 109839), (21, 109821), (25, 109782), (28, 109710), (30, 109686),

Gene: PP_04 Start: 1143, Stop: 901, Start Num: 13
Candidate Starts for PP_04:
(Start: 13 @1143 has 1 MA's), (16, 1104), (18, 1074), (22, 1035), (23, 1026), (27, 966),

Gene: Papez_93 Start: 51585, Stop: 51337, Start Num: 12
Candidate Starts for Papez_93:
(Start: 12 @51585 has 3 MA's), (Start: 17 @51537 has 44 MA's), (26, 51405),

Gene: PascalRango_92 Start: 52074, Stop: 51871, Start Num: 17
Candidate Starts for PascalRango_92:
(Start: 8 @52125 has 7 MA's), (Start: 17 @52074 has 44 MA's),

Gene: Payneful_77 Start: 46347, Stop: 46144, Start Num: 17
Candidate Starts for Payneful_77:
(Start: 17 @46347 has 44 MA's), (26, 46212),

Gene: Pelly_94 Start: 53346, Stop: 53143, Start Num: 17
Candidate Starts for Pelly_94:
(Start: 17 @53346 has 44 MA's), (26, 53211),

Gene: Petp2012_89 Start: 51326, Stop: 51123, Start Num: 17
Candidate Starts for Petp2012_89:
(Start: 17 @51326 has 44 MA's), (26, 51191),

Gene: Petruccio_88 Start: 48718, Stop: 48515, Start Num: 17
Candidate Starts for Petruccio_88:
(Start: 17 @48718 has 44 MA's), (26, 48583), (30, 48523),

Gene: Pinto_87 Start: 50214, Stop: 50011, Start Num: 17
Candidate Starts for Pinto_87:
(Start: 17 @50214 has 44 MA's),

Gene: STLscum_100 Start: 51894, Stop: 51691, Start Num: 17
Candidate Starts for STLscum_100:
(Start: 17 @51894 has 44 MA's), (26, 51759),

Gene: Sanya_81 Start: 50361, Stop: 50158, Start Num: 17
Candidate Starts for Sanya_81:
(Start: 17 @50361 has 44 MA's), (26, 50226),

Gene: SarFire_98 Start: 53353, Stop: 53099, Start Num: 8
Candidate Starts for SarFire_98:
(Start: 8 @53353 has 7 MA's), (Start: 17 @53302 has 44 MA's), (26, 53167),

Gene: Scowl_90 Start: 50695, Stop: 50898, Start Num: 17

Candidate Starts for Scowl_90:
(Start: 17 @50695 has 44 MA's), (26, 50827),

Gene: ShortQueendom_80 Start: 48241, Stop: 48038, Start Num: 17
Candidate Starts for ShortQueendom_80:
(10, 48289), (Start: 17 @48241 has 44 MA's), (26, 48106),

Gene: Sibs6_95 Start: 49833, Stop: 49630, Start Num: 17
Candidate Starts for Sibs6_95:
(Start: 17 @49833 has 44 MA's), (26, 49698),

Gene: Slagathor_92 Start: 51592, Stop: 51389, Start Num: 17
Candidate Starts for Slagathor_92:
(Start: 17 @51592 has 44 MA's),

Gene: SwissCheese_95 Start: 51439, Stop: 51236, Start Num: 17
Candidate Starts for SwissCheese_95:
(Start: 17 @51439 has 44 MA's), (26, 51304),

Gene: Switzer_91 Start: 51956, Stop: 51702, Start Num: 8
Candidate Starts for Switzer_91:
(Start: 8 @51956 has 7 MA's), (Start: 17 @51905 has 44 MA's),

Gene: Target_90 Start: 48713, Stop: 48510, Start Num: 17
Candidate Starts for Target_90:
(Start: 17 @48713 has 44 MA's), (26, 48578), (30, 48518),

Gene: Teodoridan_93 Start: 50495, Stop: 50698, Start Num: 17
Candidate Starts for Teodoridan_93:
(Start: 17 @50495 has 44 MA's), (26, 50630),

Gene: Thor_98 Start: 52711, Stop: 52457, Start Num: 8
Candidate Starts for Thor_98:
(Start: 8 @52711 has 7 MA's), (Start: 17 @52660 has 44 MA's), (26, 52525),

Gene: Traft412_86 Start: 50830, Stop: 50627, Start Num: 17
Candidate Starts for Traft412_86:
(Start: 17 @50830 has 44 MA's), (26, 50695),

Gene: Turj99_86 Start: 50763, Stop: 50560, Start Num: 17
Candidate Starts for Turj99_86:
(Start: 17 @50763 has 44 MA's), (26, 50628),

Gene: TwoPeat_88 Start: 50371, Stop: 50168, Start Num: 17
Candidate Starts for TwoPeat_88:
(3, 50518), (4, 50506), (5, 50482), (Start: 17 @50371 has 44 MA's), (26, 50236), (30, 50176),