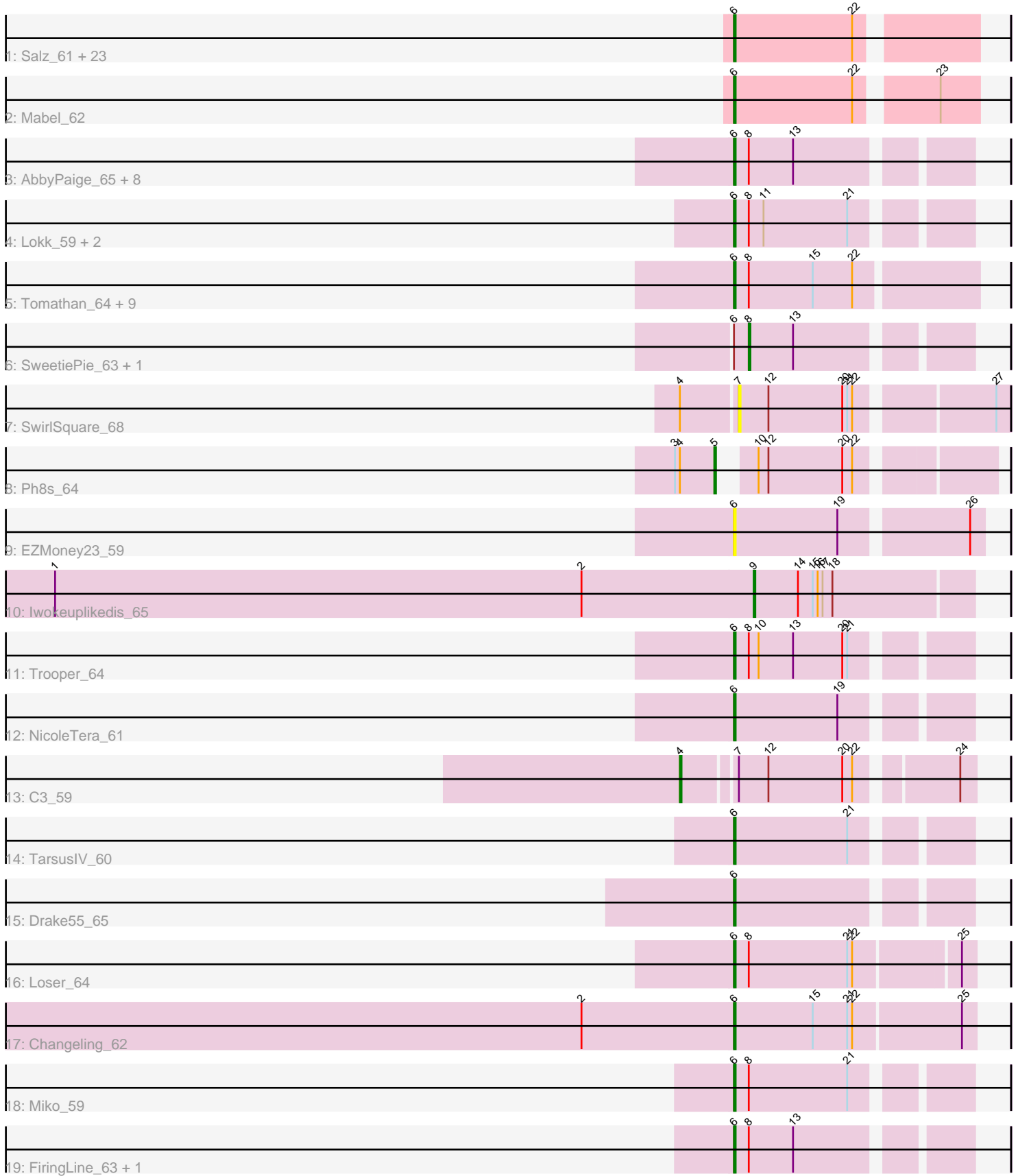


Pham 196542



Note: Tracks are now grouped by subcluster and scaled. Switching in subcluster is indicated by changes in track color. Track scale is now set by default to display the region 30 bp upstream of start 1 to 30 bp downstream of the last possible start. If this default region is judged to be packed too tightly with annotated starts, the track will be further scaled to only show that region of the ORF with annotated starts. This action will be indicated by adding "Zoomed" to the title. For starts, yellow indicates the location of called starts comprised solely of Glimmer/GeneMark auto-annotations, green indicates the location of called starts with at least 1 manual gene annotation.

Pham 196542 Report

This analysis was run 12/09/24 on database version 580.

Pham number 196542 has 63 members, 4 are drafts.

Phages represented in each track:

- Track 1 : Salz_61, Orange_61, Flaverint_63, Bachome_64, Hutc2_61, Jabith_63, Bowtie_63, Insomnia_63, Lucivia_63, Petersenfast_60, Sham4_62, Mulciber_61, Timothy_62, Snape_62, TinyTimmy_62, Ebony_62, MaCh_62, Fibonacci_62, Munch_62, Et2Brutus_61, Aneem_63, Gilberta_63, Bud_61, Joselito_63
- Track 2 : Mabel_62
- Track 3 : AbbyPaige_65, Turbido_64, Buggy_65, Jerm_65, Georgie2_64, Crucio_63, SemperFi_64, Agape74_65, LilTurb_64
- Track 4 : Loka_59, BobSwaget_58, Rachaly_61
- Track 5 : Tomathan_64, Duplo_64, D29_59.1, DBQu4n_64, Naji_64, Pomar16_63, Kerberos_64, D32_63, StarStuff_64, Travvers_63
- Track 6 : SweetiePie_63, SnapTap_63
- Track 7 : SwirlSquare_68
- Track 8 : Ph8s_64
- Track 9 : EZMoney23_59
- Track 10 : Iwokeuplikedis_65
- Track 11 : Trooper_64
- Track 12 : NicoleTera_61
- Track 13 : C3_59
- Track 14 : TarsusIV_60
- Track 15 : Drake55_65
- Track 16 : Loser_64
- Track 17 : Changeling_62
- Track 18 : Miko_59
- Track 19 : FiringLine_63, QueenBeesly_63

Summary of Final Annotations (See graph section above for start numbers):

The start number called the most often in the published annotations is 6, it was called in 54 of the 59 non-draft genes in the pham.

Genes that call this "Most Annotated" start:

- AbbyPaige_65, Agape74_65, Aneem_63, Bachome_64, BobSwaget_58, Bowtie_63, Bud_61, Buggy_65, Changeling_62, Crucio_63, D29_59.1, D32_63, DBQu4n_64, Drake55_65, Duplo_64, EZMoney23_59, Ebony_62, Et2Brutus_61,

Fibonacci_62, FiringLine_63, Flaverint_63, Georgie2_64, Gilberta_63, Hutc2_61, Insomnia_63, Jabith_63, Jerm_65, Joselito_63, Kerberos_64, LilTurb_64, Lokk_59, Loser_64, Lucivia_63, MaCh_62, Mabel_62, Miko_59, Mulciber_61, Munch_62, Naji_64, NicoleTera_61, Orange_61, Petersenfast_60, Pomar16_63, QueenBeesly_63, Rachaly_61, Salz_61, SemperFi_64, Sham4_62, Snape_62, StarStuff_64, TarsusIV_60, Timothy_62, TinyTimmy_62, Tomathan_64, Travvers_63, Trooper_64, Turbido_64,

Genes that have the "Most Annotated" start but do not call it:

- SnapTap_63, SweetiePie_63,

Genes that do not have the "Most Annotated" start:

- C3_59, Iwokeuplikedis_65, Ph8s_64, SwirlSquare_68,

Summary by start number:

Start 4:

- Found in 3 of 63 (4.8%) of genes in pham
- Manual Annotations of this start: 1 of 59
- Called 33.3% of time when present
- Phage (with cluster) where this start called: C3_59 (A2),

Start 5:

- Found in 1 of 63 (1.6%) of genes in pham
- Manual Annotations of this start: 1 of 59
- Called 100.0% of time when present
- Phage (with cluster) where this start called: Ph8s_64 (A2),

Start 6:

- Found in 59 of 63 (93.7%) of genes in pham
- Manual Annotations of this start: 54 of 59
- Called 96.6% of time when present
- Phage (with cluster) where this start called: AbbyPaige_65 (A2), Agape74_65 (A2), Aneem_63 (A11), Bachome_64 (A11), BobSwaget_58 (A2), Bowtie_63 (A11), Bud_61 (A11), Buggy_65 (A2), Changeling_62 (A2), Crucio_63 (A2), D29_59.1 (A2), D32_63 (A2), DBQu4n_64 (A2), Drake55_65 (A2), Duplo_64 (A2), EZMoney23_59 (A2), Ebony_62 (A11), Et2Brutus_61 (A11), Fibonacci_62 (A11), FiringLine_63 (A2), Flaverint_63 (A11), Georgie2_64 (A2), Gilberta_63 (A11), Hutc2_61 (A11), Insomnia_63 (A11), Jabith_63 (A11), Jerm_65 (A2), Joselito_63 (A11), Kerberos_64 (A2), LilTurb_64 (A2), Lokk_59 (A2), Loser_64 (A2), Lucivia_63 (A11), MaCh_62 (A11), Mabel_62 (A11), Miko_59 (A2), Mulciber_61 (A11), Munch_62 (A11), Naji_64 (A2), NicoleTera_61 (A2), Orange_61 (A11), Petersenfast_60 (A11), Pomar16_63 (A2), QueenBeesly_63 (A2), Rachaly_61 (A2), Salz_61 (A11), SemperFi_64 (A2), Sham4_62 (A11), Snape_62 (A11), StarStuff_64 (A2), TarsusIV_60 (A2), Timothy_62 (A11), TinyTimmy_62 (A11), Tomathan_64 (A2), Travvers_63 (A2), Trooper_64 (A2), Turbido_64 (A2),

Start 7:

- Found in 2 of 63 (3.2%) of genes in pham
- No Manual Annotations of this start.
- Called 50.0% of time when present
- Phage (with cluster) where this start called: SwirlSquare_68 (A2),

Start 8:

- Found in 29 of 63 (46.0%) of genes in pham
- Manual Annotations of this start: 2 of 59
- Called 6.9% of time when present
- Phage (with cluster) where this start called: SnapTap_63 (A2), SweetiePie_63 (A2),

Start 9:

- Found in 1 of 63 (1.6%) of genes in pham
- Manual Annotations of this start: 1 of 59
- Called 100.0% of time when present
- Phage (with cluster) where this start called: Iwokeuplikedis_65 (A2),

Summary by clusters:

There are 2 clusters represented in this pham: A2, A11,

Info for manual annotations of cluster A11:

- Start number 6 was manually annotated 24 times for cluster A11.

Info for manual annotations of cluster A2:

- Start number 4 was manually annotated 1 time for cluster A2.
- Start number 5 was manually annotated 1 time for cluster A2.
- Start number 6 was manually annotated 30 times for cluster A2.
- Start number 8 was manually annotated 2 times for cluster A2.
- Start number 9 was manually annotated 1 time for cluster A2.

Gene Information:

Gene: AbbyPaige_65 Start: 40341, Stop: 40210, Start Num: 6

Candidate Starts for AbbyPaige_65:

(Start: 6 @40341 has 54 MA's), (Start: 8 @40332 has 2 MA's), (13, 40305),

Gene: Agape74_65 Start: 40335, Stop: 40204, Start Num: 6

Candidate Starts for Agape74_65:

(Start: 6 @40335 has 54 MA's), (Start: 8 @40326 has 2 MA's), (13, 40299),

Gene: Aneem_63 Start: 39459, Stop: 39322, Start Num: 6

Candidate Starts for Aneem_63:

(Start: 6 @39459 has 54 MA's), (22, 39387),

Gene: Bachome_64 Start: 39439, Stop: 39302, Start Num: 6

Candidate Starts for Bachome_64:

(Start: 6 @39439 has 54 MA's), (22, 39367),

Gene: BobSwaget_58 Start: 38604, Stop: 38473, Start Num: 6

Candidate Starts for BobSwaget_58:

(Start: 6 @38604 has 54 MA's), (Start: 8 @38595 has 2 MA's), (11, 38586), (21, 38535),

Gene: Bowtie_63 Start: 39466, Stop: 39329, Start Num: 6

Candidate Starts for Bowtie_63:

(Start: 6 @39466 has 54 MA's), (22, 39394),

Gene: Bud_61 Start: 39013, Stop: 38876, Start Num: 6

Candidate Starts for Bud_61:

(Start: 6 @39013 has 54 MA's), (22, 38941),

Gene: Buggy_65 Start: 40392, Stop: 40261, Start Num: 6

Candidate Starts for Buggy_65:

(Start: 6 @40392 has 54 MA's), (Start: 8 @40383 has 2 MA's), (13, 40356),

Gene: C3_59 Start: 40136, Stop: 39975, Start Num: 4

Candidate Starts for C3_59:

(Start: 4 @40136 has 1 MA's), (7, 40106), (12, 40088), (20, 40043), (22, 40037), (24, 39983),

Gene: Changeling_62 Start: 40439, Stop: 40296, Start Num: 6

Candidate Starts for Changeling_62:

(2, 40529), (Start: 6 @40439 has 54 MA's), (15, 40391), (21, 40370), (22, 40367), (25, 40304),

Gene: Crucio_63 Start: 40018, Stop: 39887, Start Num: 6

Candidate Starts for Crucio_63:

(Start: 6 @40018 has 54 MA's), (Start: 8 @40009 has 2 MA's), (13, 39982),

Gene: D29_59.1 Start: 39706, Stop: 39563, Start Num: 6

Candidate Starts for D29_59.1:

(Start: 6 @39706 has 54 MA's), (Start: 8 @39697 has 2 MA's), (15, 39658), (22, 39634),

Gene: D32_63 Start: 39706, Stop: 39563, Start Num: 6

Candidate Starts for D32_63:

(Start: 6 @39706 has 54 MA's), (Start: 8 @39697 has 2 MA's), (15, 39658), (22, 39634),

Gene: DBQu4n_64 Start: 39687, Stop: 39544, Start Num: 6

Candidate Starts for DBQu4n_64:

(Start: 6 @39687 has 54 MA's), (Start: 8 @39678 has 2 MA's), (15, 39639), (22, 39615),

Gene: Drake55_65 Start: 40115, Stop: 39984, Start Num: 6

Candidate Starts for Drake55_65:

(Start: 6 @40115 has 54 MA's),

Gene: Duplo_64 Start: 39743, Stop: 39600, Start Num: 6

Candidate Starts for Duplo_64:

(Start: 6 @39743 has 54 MA's), (Start: 8 @39734 has 2 MA's), (15, 39695), (22, 39671),

Gene: EZMoney23_59 Start: 39508, Stop: 39365, Start Num: 6

Candidate Starts for EZMoney23_59:

(Start: 6 @39508 has 54 MA's), (19, 39445), (26, 39373),

Gene: Ebony_62 Start: 39030, Stop: 38893, Start Num: 6

Candidate Starts for Ebony_62:

(Start: 6 @39030 has 54 MA's), (22, 38958),

Gene: Et2Brutus_61 Start: 38993, Stop: 38856, Start Num: 6

Candidate Starts for Et2Brutus_61:

(Start: 6 @38993 has 54 MA's), (22, 38921),

Gene: Fibonacci_62 Start: 38999, Stop: 38862, Start Num: 6
Candidate Starts for Fibonacci_62:
(Start: 6 @38999 has 54 MA's), (22, 38927),

Gene: FiringLine_63 Start: 39999, Stop: 39868, Start Num: 6
Candidate Starts for FiringLine_63:
(Start: 6 @39999 has 54 MA's), (Start: 8 @39990 has 2 MA's), (13, 39963),

Gene: Flaverint_63 Start: 39457, Stop: 39320, Start Num: 6
Candidate Starts for Flaverint_63:
(Start: 6 @39457 has 54 MA's), (22, 39385),

Gene: Georgie2_64 Start: 40044, Stop: 39913, Start Num: 6
Candidate Starts for Georgie2_64:
(Start: 6 @40044 has 54 MA's), (Start: 8 @40035 has 2 MA's), (13, 40008),

Gene: Gilberta_63 Start: 39450, Stop: 39313, Start Num: 6
Candidate Starts for Gilberta_63:
(Start: 6 @39450 has 54 MA's), (22, 39378),

Gene: Hutc2_61 Start: 38999, Stop: 38862, Start Num: 6
Candidate Starts for Hutc2_61:
(Start: 6 @38999 has 54 MA's), (22, 38927),

Gene: Insomnia_63 Start: 39510, Stop: 39373, Start Num: 6
Candidate Starts for Insomnia_63:
(Start: 6 @39510 has 54 MA's), (22, 39438),

Gene: Iwokeuplikedis_65 Start: 39836, Stop: 39705, Start Num: 9
Candidate Starts for Iwokeuplikedis_65:
(1, 40247), (2, 39926), (Start: 9 @39836 has 1 MA's), (14, 39809), (15, 39800), (16, 39797), (17, 39794), (18, 39788),

Gene: Jabith_63 Start: 39511, Stop: 39374, Start Num: 6
Candidate Starts for Jabith_63:
(Start: 6 @39511 has 54 MA's), (22, 39439),

Gene: Jerm_65 Start: 40407, Stop: 40276, Start Num: 6
Candidate Starts for Jerm_65:
(Start: 6 @40407 has 54 MA's), (Start: 8 @40398 has 2 MA's), (13, 40371),

Gene: Joselito_63 Start: 39459, Stop: 39322, Start Num: 6
Candidate Starts for Joselito_63:
(Start: 6 @39459 has 54 MA's), (22, 39387),

Gene: Kerberos_64 Start: 39705, Stop: 39562, Start Num: 6
Candidate Starts for Kerberos_64:
(Start: 6 @39705 has 54 MA's), (Start: 8 @39696 has 2 MA's), (15, 39657), (22, 39633),

Gene: LilTurb_64 Start: 40289, Stop: 40158, Start Num: 6
Candidate Starts for LilTurb_64:
(Start: 6 @40289 has 54 MA's), (Start: 8 @40280 has 2 MA's), (13, 40253),

Gene: Lokk_59 Start: 39228, Stop: 39097, Start Num: 6

Candidate Starts for Lokk_59:

(Start: 6 @39228 has 54 MA's), (Start: 8 @39219 has 2 MA's), (11, 39210), (21, 39159),

Gene: Loser_64 Start: 40496, Stop: 40356, Start Num: 6

Candidate Starts for Loser_64:

(Start: 6 @40496 has 54 MA's), (Start: 8 @40487 has 2 MA's), (21, 40427), (22, 40424), (25, 40364),

Gene: Lucivia_63 Start: 39508, Stop: 39371, Start Num: 6

Candidate Starts for Lucivia_63:

(Start: 6 @39508 has 54 MA's), (22, 39436),

Gene: MaCh_62 Start: 39438, Stop: 39301, Start Num: 6

Candidate Starts for MaCh_62:

(Start: 6 @39438 has 54 MA's), (22, 39366),

Gene: Mabel_62 Start: 39455, Stop: 39318, Start Num: 6

Candidate Starts for Mabel_62:

(Start: 6 @39455 has 54 MA's), (22, 39383), (23, 39341),

Gene: Miko_59 Start: 40006, Stop: 39875, Start Num: 6

Candidate Starts for Miko_59:

(Start: 6 @40006 has 54 MA's), (Start: 8 @39997 has 2 MA's), (21, 39937),

Gene: Mulciber_61 Start: 38996, Stop: 38859, Start Num: 6

Candidate Starts for Mulciber_61:

(Start: 6 @38996 has 54 MA's), (22, 38924),

Gene: Munch_62 Start: 39459, Stop: 39322, Start Num: 6

Candidate Starts for Munch_62:

(Start: 6 @39459 has 54 MA's), (22, 39387),

Gene: Naji_64 Start: 39706, Stop: 39563, Start Num: 6

Candidate Starts for Naji_64:

(Start: 6 @39706 has 54 MA's), (Start: 8 @39697 has 2 MA's), (15, 39658), (22, 39634),

Gene: NicoleTera_61 Start: 39996, Stop: 39865, Start Num: 6

Candidate Starts for NicoleTera_61:

(Start: 6 @39996 has 54 MA's), (19, 39933),

Gene: Orange_61 Start: 39008, Stop: 38871, Start Num: 6

Candidate Starts for Orange_61:

(Start: 6 @39008 has 54 MA's), (22, 38936),

Gene: Petersenfast_60 Start: 39007, Stop: 38870, Start Num: 6

Candidate Starts for Petersenfast_60:

(Start: 6 @39007 has 54 MA's), (22, 38935),

Gene: Ph8s_64 Start: 39243, Stop: 39100, Start Num: 5

Candidate Starts for Ph8s_64:

(3, 39267), (Start: 4 @39264 has 1 MA's), (Start: 5 @39243 has 1 MA's), (10, 39231), (12, 39225), (20, 39180), (22, 39174),

Gene: Pomar16_63 Start: 39746, Stop: 39603, Start Num: 6
Candidate Starts for Pomar16_63:
(Start: 6 @39746 has 54 MA's), (Start: 8 @39737 has 2 MA's), (15, 39698), (22, 39674),

Gene: QueenBeesly_63 Start: 39999, Stop: 39868, Start Num: 6
Candidate Starts for QueenBeesly_63:
(Start: 6 @39999 has 54 MA's), (Start: 8 @39990 has 2 MA's), (13, 39963),

Gene: Rachaly_61 Start: 40151, Stop: 40020, Start Num: 6
Candidate Starts for Rachaly_61:
(Start: 6 @40151 has 54 MA's), (Start: 8 @40142 has 2 MA's), (11, 40133), (21, 40082),

Gene: Salz_61 Start: 38978, Stop: 38841, Start Num: 6
Candidate Starts for Salz_61:
(Start: 6 @38978 has 54 MA's), (22, 38906),

Gene: SemperFi_64 Start: 40267, Stop: 40136, Start Num: 6
Candidate Starts for SemperFi_64:
(Start: 6 @40267 has 54 MA's), (Start: 8 @40258 has 2 MA's), (13, 40231),

Gene: Sham4_62 Start: 39006, Stop: 38869, Start Num: 6
Candidate Starts for Sham4_62:
(Start: 6 @39006 has 54 MA's), (22, 38934),

Gene: SnapTap_63 Start: 40069, Stop: 39947, Start Num: 8
Candidate Starts for SnapTap_63:
(Start: 6 @40078 has 54 MA's), (Start: 8 @40069 has 2 MA's), (13, 40042),

Gene: Snape_62 Start: 38998, Stop: 38861, Start Num: 6
Candidate Starts for Snape_62:
(Start: 6 @38998 has 54 MA's), (22, 38926),

Gene: StarStuff_64 Start: 39708, Stop: 39565, Start Num: 6
Candidate Starts for StarStuff_64:
(Start: 6 @39708 has 54 MA's), (Start: 8 @39699 has 2 MA's), (15, 39660), (22, 39636),

Gene: SweetiePie_63 Start: 40201, Stop: 40079, Start Num: 8
Candidate Starts for SweetiePie_63:
(Start: 6 @40210 has 54 MA's), (Start: 8 @40201 has 2 MA's), (13, 40174),

Gene: SwirlSquare_68 Start: 39598, Stop: 39446, Start Num: 7
Candidate Starts for SwirlSquare_68:
(Start: 4 @39631 has 1 MA's), (7, 39598), (12, 39580), (20, 39535), (21, 39532), (22, 39529), (27, 39454),

Gene: TarsusIV_60 Start: 39672, Stop: 39541, Start Num: 6
Candidate Starts for TarsusIV_60:
(Start: 6 @39672 has 54 MA's), (21, 39603),

Gene: Timothy_62 Start: 38975, Stop: 38838, Start Num: 6
Candidate Starts for Timothy_62:
(Start: 6 @38975 has 54 MA's), (22, 38903),

Gene: TinyTimmy_62 Start: 39024, Stop: 38887, Start Num: 6
Candidate Starts for TinyTimmy_62:
(Start: 6 @39024 has 54 MA's), (22, 38952),

Gene: Tomathan_64 Start: 39755, Stop: 39612, Start Num: 6
Candidate Starts for Tomathan_64:
(Start: 6 @39755 has 54 MA's), (Start: 8 @39746 has 2 MA's), (15, 39707), (22, 39683),

Gene: Travvers_63 Start: 39705, Stop: 39562, Start Num: 6
Candidate Starts for Travvers_63:
(Start: 6 @39705 has 54 MA's), (Start: 8 @39696 has 2 MA's), (15, 39657), (22, 39633),

Gene: Trooper_64 Start: 40399, Stop: 40268, Start Num: 6
Candidate Starts for Trooper_64:
(Start: 6 @40399 has 54 MA's), (Start: 8 @40390 has 2 MA's), (10, 40384), (13, 40363), (20, 40333),
(21, 40330),

Gene: Turbido_64 Start: 40285, Stop: 40154, Start Num: 6
Candidate Starts for Turbido_64:
(Start: 6 @40285 has 54 MA's), (Start: 8 @40276 has 2 MA's), (13, 40249),