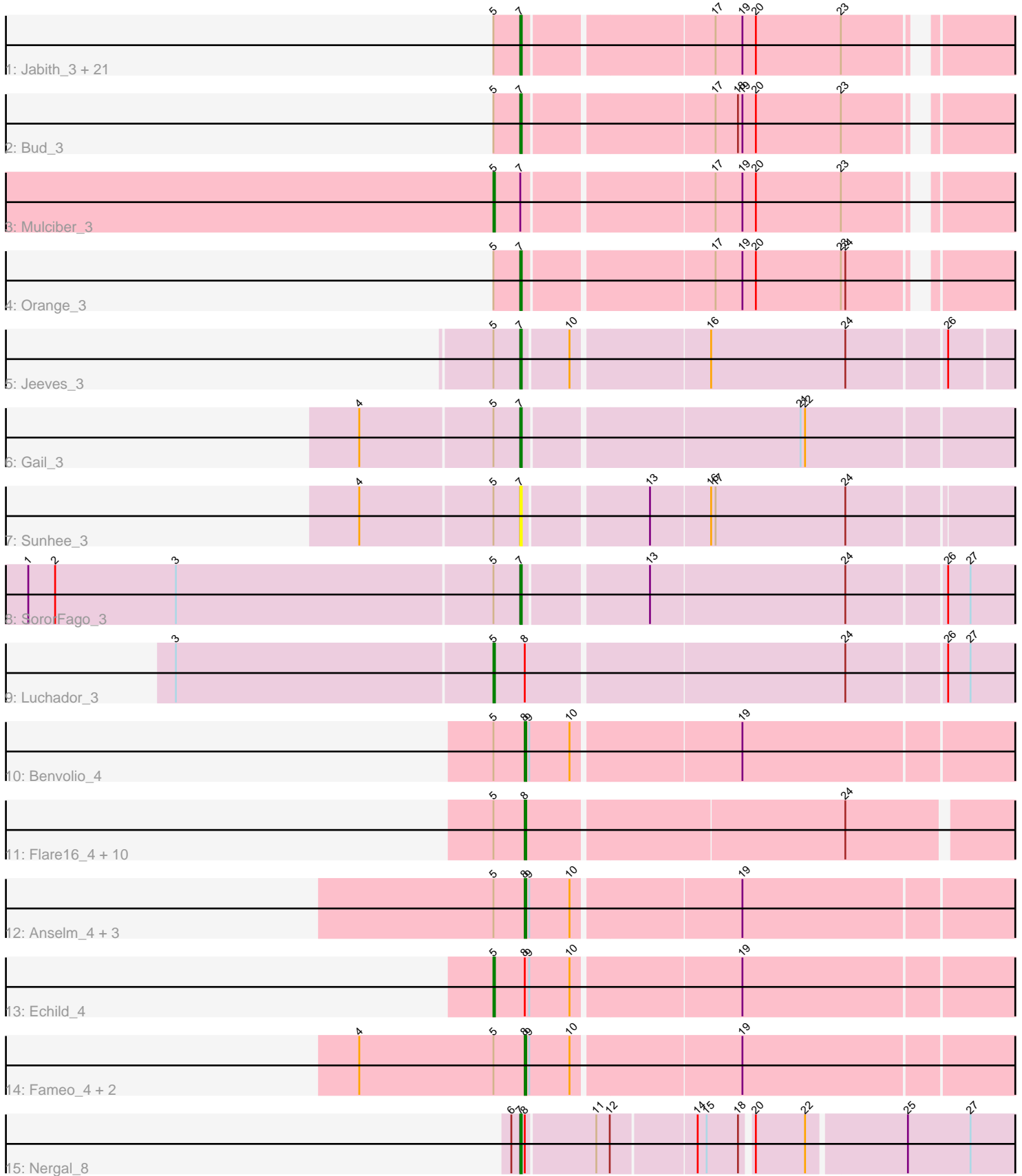


Pham 196600



Note: Tracks are now grouped by subcluster and scaled. Switching in subcluster is indicated by changes in track color. Track scale is now set by default to display the region 30 bp upstream of start 1 to 30 bp downstream of the last possible start. If this default region is judged to be packed too tightly with annotated starts, the track will be further scaled to only show that region of the ORF with annotated starts. This action will be indicated by adding "Zoomed" to the title. For starts, yellow indicates the location of called starts comprised solely of Glimmer/GeneMark auto-annotations, green indicates the location of called starts with at least 1 manual gene annotation.

Pham 196600 Report

This analysis was run 12/09/24 on database version 580.

Pham number 196600 has 51 members, 2 are drafts.

Phages represented in each track:

- Track 1 : Jabith_3, Joselito_3, Mabel_3, Aneem_3, Petersenfast_3, Gilberta_3, MaCh_3, Et2Brutus_3, Flaverint_3, Munch_3, Salz_3, Hutc2_3, Bowtie_3, Bachome_3, TinyTimmy_3, Sham4_3, Insomnia_3, Timothy_3, Fibonacci_3, Snape_3, Ebony_3, Lucivia_3
- Track 2 : Bud_3
- Track 3 : Mulciber_3
- Track 4 : Orange_3
- Track 5 : Jeeves_3
- Track 6 : Gail_3
- Track 7 : Sunhee_3
- Track 8 : SororFago_3
- Track 9 : Luchador_3
- Track 10 : Benvolio_4
- Track 11 : Flare16_4, Centaur_4, MiculUcigas_4, Updawg_4, Drake55_4, WideWale_4, Baehexic_4, Piro94_3, HarryHoudini_4, Equemioh13_4, NaSiaTalie_4
- Track 12 : Anselm_4, DudeLittle_4, Retro23_4, Dalmatian_4
- Track 13 : Echild_4
- Track 14 : Fameo_4, QueenB2_4, Heffalump_4
- Track 15 : Nergal_8

Summary of Final Annotations (See graph section above for start numbers):

The start number called the most often in the published annotations is 7, it was called in 27 of the 49 non-draft genes in the pham.

Genes that call this "Most Annotated" start:

- Aneem_3, Bachome_3, Bowtie_3, Bud_3, Ebony_3, Et2Brutus_3, Fibonacci_3, Flaverint_3, Gail_3, Gilberta_3, Hutc2_3, Insomnia_3, Jabith_3, Jeeves_3, Joselito_3, Lucivia_3, MaCh_3, Mabel_3, Munch_3, Nergal_8, Orange_3, Petersenfast_3, Salz_3, Sham4_3, Snape_3, SororFago_3, Sunhee_3, Timothy_3, TinyTimmy_3,

Genes that have the "Most Annotated" start but do not call it:

- Mulciber_3,

Genes that do not have the "Most Annotated" start:

- Anselm_4, Baehexic_4, Benvolio_4, Centaur_4, Dalmatian_4, Drake55_4, DudeLittle_4, Echild_4, Equemioh13_4, Fameo_4, Flare16_4, HarryHoudini_4, Heffalump_4, Luchador_3, MiculUcigas_4, NaSiaTalie_4, Piro94_3, QueenB2_4, Retro23_4, Updawg_4, WideWale_4,

Summary by start number:

Start 5:

- Found in 50 of 51 (98.0%) of genes in pham
- Manual Annotations of this start: 3 of 49
- Called 6.0% of time when present
- Phage (with cluster) where this start called: Echild_4 (A2), Luchador_3 (A14), Mulciber_3 (A11),

Start 7:

- Found in 30 of 51 (58.8%) of genes in pham
- Manual Annotations of this start: 27 of 49
- Called 96.7% of time when present
- Phage (with cluster) where this start called: Aneem_3 (A11), Bachome_3 (A11), Bowtie_3 (A11), Bud_3 (A11), Ebony_3 (A11), Et2Brutus_3 (A11), Fibonacci_3 (A11), Flaverint_3 (A11), Gail_3 (A14), Gilberta_3 (A11), Hutc2_3 (A11), Insomnia_3 (A11), Jabith_3 (A11), Jeeves_3 (A14), Joselito_3 (A11), Lucivia_3 (A11), MaCh_3 (A11), Mabel_3 (A11), Munch_3 (A11), Nergal_8 (AG), Orange_3 (A11), Petersenfast_3 (A11), Salz_3 (A11), Sham4_3 (A11), Snape_3 (A11), SororFago_3 (A14), Sunhee_3 (A14), Timothy_3 (A11), TinyTimmy_3 (A11),

Start 8:

- Found in 22 of 51 (43.1%) of genes in pham
- Manual Annotations of this start: 19 of 49
- Called 86.4% of time when present
- Phage (with cluster) where this start called: Anselm_4 (A2), Baehexic_4 (A2), Benvolio_4 (A2), Centaur_4 (A2), Dalmatian_4 (A2), Drake55_4 (A2), DudeLittle_4 (A2), Equemioh13_4 (A2), Fameo_4 (A2), Flare16_4 (A2), HarryHoudini_4 (A2), Heffalump_4 (A2), MiculUcigas_4 (A2), NaSiaTalie_4 (A2), Piro94_3 (A2), QueenB2_4 (A2), Retro23_4 (A2), Updawg_4 (A2), WideWale_4 (A2),

Summary by clusters:

There are 4 clusters represented in this pham: A14, A2, A11, AG,

Info for manual annotations of cluster A11:

- Start number 5 was manually annotated 1 time for cluster A11.
- Start number 7 was manually annotated 23 times for cluster A11.

Info for manual annotations of cluster A14:

- Start number 5 was manually annotated 1 time for cluster A14.
- Start number 7 was manually annotated 3 times for cluster A14.

Info for manual annotations of cluster A2:

- Start number 5 was manually annotated 1 time for cluster A2.
- Start number 8 was manually annotated 19 times for cluster A2.

Info for manual annotations of cluster AG:

•Start number 7 was manually annotated 1 time for cluster AG.

Gene Information:

Gene: Aneem_3 Start: 2057, Stop: 2359, Start Num: 7

Candidate Starts for Aneem_3:

(Start: 5 @2039 has 3 MA's), (Start: 7 @2057 has 27 MA's), (17, 2177), (19, 2195), (20, 2204), (23, 2261),

Gene: Anselm_4 Start: 2360, Stop: 2677, Start Num: 8

Candidate Starts for Anselm_4:

(Start: 5 @2339 has 3 MA's), (Start: 8 @2360 has 19 MA's), (9, 2363), (10, 2390), (19, 2498),

Gene: Bachome_3 Start: 2054, Stop: 2356, Start Num: 7

Candidate Starts for Bachome_3:

(Start: 5 @2036 has 3 MA's), (Start: 7 @2054 has 27 MA's), (17, 2174), (19, 2192), (20, 2201), (23, 2258),

Gene: Baehexic_4 Start: 2314, Stop: 2628, Start Num: 8

Candidate Starts for Baehexic_4:

(Start: 5 @2293 has 3 MA's), (Start: 8 @2314 has 19 MA's), (24, 2521),

Gene: Benvolio_4 Start: 2358, Stop: 2675, Start Num: 8

Candidate Starts for Benvolio_4:

(Start: 5 @2337 has 3 MA's), (Start: 8 @2358 has 19 MA's), (9, 2361), (10, 2388), (19, 2496),

Gene: Bowtie_3 Start: 2057, Stop: 2359, Start Num: 7

Candidate Starts for Bowtie_3:

(Start: 5 @2039 has 3 MA's), (Start: 7 @2057 has 27 MA's), (17, 2177), (19, 2195), (20, 2204), (23, 2261),

Gene: Bud_3 Start: 2063, Stop: 2365, Start Num: 7

Candidate Starts for Bud_3:

(Start: 5 @2045 has 3 MA's), (Start: 7 @2063 has 27 MA's), (17, 2183), (18, 2198), (19, 2201), (20, 2210), (23, 2267),

Gene: Centaur_4 Start: 2310, Stop: 2624, Start Num: 8

Candidate Starts for Centaur_4:

(Start: 5 @2289 has 3 MA's), (Start: 8 @2310 has 19 MA's), (24, 2517),

Gene: Dalmatian_4 Start: 2357, Stop: 2674, Start Num: 8

Candidate Starts for Dalmatian_4:

(Start: 5 @2336 has 3 MA's), (Start: 8 @2357 has 19 MA's), (9, 2360), (10, 2387), (19, 2495),

Gene: Drake55_4 Start: 2316, Stop: 2630, Start Num: 8

Candidate Starts for Drake55_4:

(Start: 5 @2295 has 3 MA's), (Start: 8 @2316 has 19 MA's), (24, 2523),

Gene: DudeLittle_4 Start: 2357, Stop: 2674, Start Num: 8

Candidate Starts for DudeLittle_4:

(Start: 5 @2336 has 3 MA's), (Start: 8 @2357 has 19 MA's), (9, 2360), (10, 2387), (19, 2495),

Gene: Ebony_3 Start: 2063, Stop: 2365, Start Num: 7

Candidate Starts for Ebony_3:

(Start: 5 @2045 has 3 MA's), (Start: 7 @2063 has 27 MA's), (17, 2183), (19, 2201), (20, 2210), (23, 2267),

Gene: Echild_4 Start: 2337, Stop: 2675, Start Num: 5

Candidate Starts for Echild_4:

(Start: 5 @2337 has 3 MA's), (Start: 8 @2358 has 19 MA's), (9, 2361), (10, 2388), (19, 2496),

Gene: Equemioh13_4 Start: 2313, Stop: 2627, Start Num: 8

Candidate Starts for Equemioh13_4:

(Start: 5 @2292 has 3 MA's), (Start: 8 @2313 has 19 MA's), (24, 2520),

Gene: Et2Brutus_3 Start: 2060, Stop: 2362, Start Num: 7

Candidate Starts for Et2Brutus_3:

(Start: 5 @2042 has 3 MA's), (Start: 7 @2060 has 27 MA's), (17, 2180), (19, 2198), (20, 2207), (23, 2264),

Gene: Fameo_4 Start: 2357, Stop: 2674, Start Num: 8

Candidate Starts for Fameo_4:

(4, 2246), (Start: 5 @2336 has 3 MA's), (Start: 8 @2357 has 19 MA's), (9, 2360), (10, 2387), (19, 2495),

Gene: Fibonacci_3 Start: 2060, Stop: 2362, Start Num: 7

Candidate Starts for Fibonacci_3:

(Start: 5 @2042 has 3 MA's), (Start: 7 @2060 has 27 MA's), (17, 2180), (19, 2198), (20, 2207), (23, 2264),

Gene: Flare16_4 Start: 2313, Stop: 2627, Start Num: 8

Candidate Starts for Flare16_4:

(Start: 5 @2292 has 3 MA's), (Start: 8 @2313 has 19 MA's), (24, 2520),

Gene: Flaverint_3 Start: 2057, Stop: 2359, Start Num: 7

Candidate Starts for Flaverint_3:

(Start: 5 @2039 has 3 MA's), (Start: 7 @2057 has 27 MA's), (17, 2177), (19, 2195), (20, 2204), (23, 2261),

Gene: Gail_3 Start: 2082, Stop: 2399, Start Num: 7

Candidate Starts for Gail_3:

(4, 1977), (Start: 5 @2064 has 3 MA's), (Start: 7 @2082 has 27 MA's), (21, 2259), (22, 2262),

Gene: Gilberta_3 Start: 2054, Stop: 2356, Start Num: 7

Candidate Starts for Gilberta_3:

(Start: 5 @2036 has 3 MA's), (Start: 7 @2054 has 27 MA's), (17, 2174), (19, 2192), (20, 2201), (23, 2258),

Gene: HarryHoudini_4 Start: 2316, Stop: 2630, Start Num: 8

Candidate Starts for HarryHoudini_4:

(Start: 5 @2295 has 3 MA's), (Start: 8 @2316 has 19 MA's), (24, 2523),

Gene: Heffalump_4 Start: 2357, Stop: 2674, Start Num: 8

Candidate Starts for Heffalump_4:

(4, 2246), (Start: 5 @2336 has 3 MA's), (Start: 8 @2357 has 19 MA's), (9, 2360), (10, 2387), (19, 2495),

Gene: Hutc2_3 Start: 2060, Stop: 2362, Start Num: 7

Candidate Starts for Hutc2_3:

(Start: 5 @2042 has 3 MA's), (Start: 7 @2060 has 27 MA's), (17, 2180), (19, 2198), (20, 2207), (23, 2264),

Gene: Insomnia_3 Start: 2057, Stop: 2359, Start Num: 7

Candidate Starts for Insomnia_3:

(Start: 5 @2039 has 3 MA's), (Start: 7 @2057 has 27 MA's), (17, 2177), (19, 2195), (20, 2204), (23, 2261),

Gene: Jabith_3 Start: 2057, Stop: 2359, Start Num: 7

Candidate Starts for Jabith_3:

(Start: 5 @2039 has 3 MA's), (Start: 7 @2057 has 27 MA's), (17, 2177), (19, 2195), (20, 2204), (23, 2261),

Gene: Jeeves_3 Start: 2107, Stop: 2421, Start Num: 7

Candidate Starts for Jeeves_3:

(Start: 5 @2089 has 3 MA's), (Start: 7 @2107 has 27 MA's), (10, 2137), (16, 2224), (24, 2314), (26, 2377),

Gene: Joselito_3 Start: 2057, Stop: 2359, Start Num: 7

Candidate Starts for Joselito_3:

(Start: 5 @2039 has 3 MA's), (Start: 7 @2057 has 27 MA's), (17, 2177), (19, 2195), (20, 2204), (23, 2261),

Gene: Luchador_3 Start: 2067, Stop: 2405, Start Num: 5

Candidate Starts for Luchador_3:

(3, 1857), (Start: 5 @2067 has 3 MA's), (Start: 8 @2088 has 19 MA's), (24, 2295), (26, 2358), (27, 2373),

Gene: Lucivia_3 Start: 2054, Stop: 2356, Start Num: 7

Candidate Starts for Lucivia_3:

(Start: 5 @2036 has 3 MA's), (Start: 7 @2054 has 27 MA's), (17, 2174), (19, 2192), (20, 2201), (23, 2258),

Gene: MaCh_3 Start: 2054, Stop: 2356, Start Num: 7

Candidate Starts for MaCh_3:

(Start: 5 @2036 has 3 MA's), (Start: 7 @2054 has 27 MA's), (17, 2174), (19, 2192), (20, 2201), (23, 2258),

Gene: Mabel_3 Start: 2069, Stop: 2371, Start Num: 7

Candidate Starts for Mabel_3:

(Start: 5 @2051 has 3 MA's), (Start: 7 @2069 has 27 MA's), (17, 2189), (19, 2207), (20, 2216), (23, 2273),

Gene: MiculUcigas_4 Start: 2313, Stop: 2627, Start Num: 8

Candidate Starts for MiculUcigas_4:

(Start: 5 @2292 has 3 MA's), (Start: 8 @2313 has 19 MA's), (24, 2520),

Gene: Mulciber_3 Start: 2042, Stop: 2362, Start Num: 5

Candidate Starts for Mulciber_3:

(Start: 5 @2042 has 3 MA's), (Start: 7 @2060 has 27 MA's), (17, 2180), (19, 2198), (20, 2207), (23, 2264),

Gene: Munch_3 Start: 2057, Stop: 2359, Start Num: 7

Candidate Starts for Munch_3:

(Start: 5 @2039 has 3 MA's), (Start: 7 @2057 has 27 MA's), (17, 2177), (19, 2195), (20, 2204), (23, 2261),

Gene: NaSiaTalie_4 Start: 2313, Stop: 2627, Start Num: 8

Candidate Starts for NaSiaTalie_4:

(Start: 5 @2292 has 3 MA's), (Start: 8 @2313 has 19 MA's), (24, 2520),

Gene: Nergal_8 Start: 6878, Stop: 7195, Start Num: 7

Candidate Starts for Nergal_8:

(6, 6872), (Start: 7 @6878 has 27 MA's), (Start: 8 @6881 has 19 MA's), (11, 6926), (12, 6935), (14, 6989), (15, 6995), (18, 7016), (20, 7022), (22, 7055), (25, 7118), (27, 7160),

Gene: Orange_3 Start: 2057, Stop: 2359, Start Num: 7

Candidate Starts for Orange_3:

(Start: 5 @2039 has 3 MA's), (Start: 7 @2057 has 27 MA's), (17, 2177), (19, 2195), (20, 2204), (23, 2261), (24, 2264),

Gene: Petersenfast_3 Start: 2060, Stop: 2362, Start Num: 7

Candidate Starts for Petersenfast_3:

(Start: 5 @2042 has 3 MA's), (Start: 7 @2060 has 27 MA's), (17, 2180), (19, 2198), (20, 2207), (23, 2264),

Gene: Piro94_3 Start: 2317, Stop: 2631, Start Num: 8

Candidate Starts for Piro94_3:

(Start: 5 @2296 has 3 MA's), (Start: 8 @2317 has 19 MA's), (24, 2524),

Gene: QueenB2_4 Start: 2357, Stop: 2674, Start Num: 8

Candidate Starts for QueenB2_4:

(4, 2246), (Start: 5 @2336 has 3 MA's), (Start: 8 @2357 has 19 MA's), (9, 2360), (10, 2387), (19, 2495),

Gene: Retro23_4 Start: 2357, Stop: 2674, Start Num: 8

Candidate Starts for Retro23_4:

(Start: 5 @2336 has 3 MA's), (Start: 8 @2357 has 19 MA's), (9, 2360), (10, 2387), (19, 2495),

Gene: Salz_3 Start: 2057, Stop: 2359, Start Num: 7

Candidate Starts for Salz_3:

(Start: 5 @2039 has 3 MA's), (Start: 7 @2057 has 27 MA's), (17, 2177), (19, 2195), (20, 2204), (23, 2261),

Gene: Sham4_3 Start: 2060, Stop: 2362, Start Num: 7

Candidate Starts for Sham4_3:

(Start: 5 @2042 has 3 MA's), (Start: 7 @2060 has 27 MA's), (17, 2180), (19, 2198), (20, 2207), (23, 2264),

Gene: Snape_3 Start: 2063, Stop: 2365, Start Num: 7

Candidate Starts for Snape_3:

(Start: 5 @2045 has 3 MA's), (Start: 7 @2063 has 27 MA's), (17, 2183), (19, 2201), (20, 2210), (23, 2267),

Gene: SororFago_3 Start: 2085, Stop: 2402, Start Num: 7

Candidate Starts for SororFago_3:

(1, 1758), (2, 1776), (3, 1857), (Start: 5 @2067 has 3 MA's), (Start: 7 @2085 has 27 MA's), (13, 2163), (24, 2292), (26, 2355), (27, 2370),

Gene: Sunhee_3 Start: 2105, Stop: 2419, Start Num: 7

Candidate Starts for Sunhee_3:

(4, 2000), (Start: 5 @2087 has 3 MA's), (Start: 7 @2105 has 27 MA's), (13, 2183), (16, 2222), (17, 2225), (24, 2312),

Gene: Timothy_3 Start: 2057, Stop: 2359, Start Num: 7

Candidate Starts for Timothy_3:

(Start: 5 @2039 has 3 MA's), (Start: 7 @2057 has 27 MA's), (17, 2177), (19, 2195), (20, 2204), (23, 2261),

Gene: TinyTimmy_3 Start: 2057, Stop: 2359, Start Num: 7

Candidate Starts for TinyTimmy_3:

(Start: 5 @2039 has 3 MA's), (Start: 7 @2057 has 27 MA's), (17, 2177), (19, 2195), (20, 2204), (23, 2261),

Gene: Updawg_4 Start: 2313, Stop: 2627, Start Num: 8

Candidate Starts for Updawg_4:

(Start: 5 @2292 has 3 MA's), (Start: 8 @2313 has 19 MA's), (24, 2520),

Gene: WideWale_4 Start: 2313, Stop: 2627, Start Num: 8

Candidate Starts for WideWale_4:

(Start: 5 @2292 has 3 MA's), (Start: 8 @2313 has 19 MA's), (24, 2520),