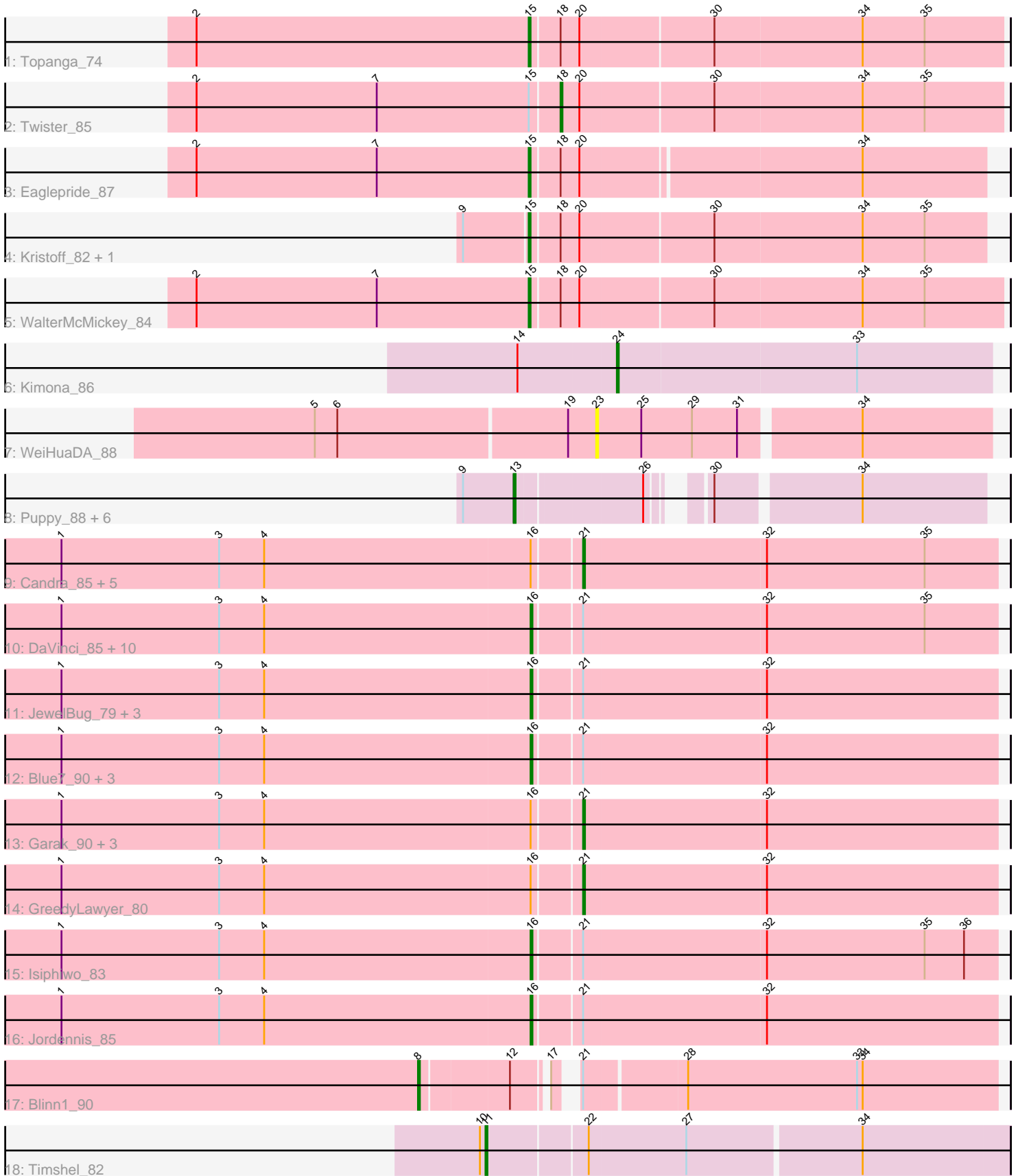


Pham 196609



Note: Tracks are now grouped by subcluster and scaled. Switching in subcluster is indicated by changes in track color. Track scale is now set by default to display the region 30 bp upstream of start 1 to 30 bp downstream of the last possible start. If this default region is judged to be packed too tightly with annotated starts, the track will be further scaled to only show that region of the ORF with annotated starts. This action will be indicated by adding "Zoomed" to the title. For starts, yellow indicates the location of called starts comprised solely of Glimmer/GeneMark auto-annotations, green indicates the location of called starts with at least 1 manual gene annotation.

Pham 196609 Report

This analysis was run 12/09/24 on database version 580.

Pham number 196609 has 49 members, 8 are drafts.

Phages represented in each track:

- Track 1 : Topanga_74
- Track 2 : Twister_85
- Track 3 : Eaglepride_87
- Track 4 : Kristoff_82, Rebeuca_85
- Track 5 : WalterMcMickey_84
- Track 6 : Kimona_86
- Track 7 : WeiHuaDA_88
- Track 8 : Puppy_88, TNguyen7_88, BlueBird_89, Pistachio_87, Giroux_85, SaturnRing_88, Bugatti_88
- Track 9 : Candra_85, Chartreuse_85, Neeharika16_86, SuperCallie99_83, Priamo_88, EricB_85
- Track 10 : DaVinci_85, Hoot_82, Cookiedough_87, SmellyB_87, McFly_87, VohminGhazi_87, BABullseye_80, Kazan_88, Zulu_90, Kipper29_87, Dorothea_87
- Track 11 : JewelBug_79, Pmask_86, Newrala_86, SuperAwesome_87
- Track 12 : Blue7_90, Indra_92, Koko_90, Wiks_88
- Track 13 : Garak_90, Helmet_90, Yokurt_88, Zaka_89
- Track 14 : GreedyLawyer_80
- Track 15 : Isiphiwo_83
- Track 16 : Jordennis_85
- Track 17 : Blinn1_90
- Track 18 : Timshel_82

Summary of Final Annotations (See graph section above for start numbers):

The start number called the most often in the published annotations is 16, it was called in 21 of the 41 non-draft genes in the pham.

Genes that call this "Most Annotated" start:

- BABullseye_80, Blue7_90, Cookiedough_87, DaVinci_85, Dorothea_87, Hoot_82, Indra_92, Isiphiwo_83, JewelBug_79, Jordennis_85, Kazan_88, Kipper29_87, Koko_90, McFly_87, Newrala_86, Pmask_86, SmellyB_87, SuperAwesome_87, VohminGhazi_87, Wiks_88, Zulu_90,

Genes that have the "Most Annotated" start but do not call it:

- Candra_85, Chartreuse_85, EricB_85, Garak_90, GreedyLawyer_80, Helmet_90, Neeharika16_86, Priamo_88, SuperCallie99_83, Yokurt_88, Zaka_89,

Genes that do not have the "Most Annotated" start:

- Blinn1_90, BlueBird_89, Bugatti_88, Eaglepride_87, Giroux_85, Kimona_86, Kristoff_82, Pistachio_87, Puppy_88, Rebeuca_85, SaturnRing_88, TNguyen7_88, Timshel_82, Topanga_74, Twister_85, WalterMcMickey_84, WeiHuaDA_88,

Summary by start number:

Start 8:

- Found in 1 of 49 (2.0%) of genes in pham
- Manual Annotations of this start: 1 of 41
- Called 100.0% of time when present
- Phage (with cluster) where this start called: Blinn1_90 (A6),

Start 11:

- Found in 1 of 49 (2.0%) of genes in pham
- Manual Annotations of this start: 1 of 41
- Called 100.0% of time when present
- Phage (with cluster) where this start called: Timshel_82 (A7),

Start 13:

- Found in 7 of 49 (14.3%) of genes in pham
- Manual Annotations of this start: 4 of 41
- Called 100.0% of time when present
- Phage (with cluster) where this start called: BlueBird_89 (A3), Bugatti_88 (A3), Giroux_85 (A3), Pistachio_87 (A3), Puppy_88 (A3), SaturnRing_88 (A3), TNguyen7_88 (A3),

Start 15:

- Found in 6 of 49 (12.2%) of genes in pham
- Manual Annotations of this start: 5 of 41
- Called 83.3% of time when present
- Phage (with cluster) where this start called: Eaglepride_87 (A10), Kristoff_82 (A10), Rebeuca_85 (A10), Topanga_74 (A10), WalterMcMickey_84 (A10),

Start 16:

- Found in 32 of 49 (65.3%) of genes in pham
- Manual Annotations of this start: 21 of 41
- Called 65.6% of time when present
- Phage (with cluster) where this start called: BABullseye_80 (A6), Blue7_90 (A6), Cookiedough_87 (A6), DaVinci_85 (A6), Dorothea_87 (A6), Hoot_82 (A6), Indra_92 (A6), Isiphiwo_83 (A6), JewelBug_79 (A6), Jordennis_85 (A6), Kazan_88 (A6), Kipper29_87 (A6), Koko_90 (A6), McFly_87 (A6), Newrala_86 (A6), Pmask_86 (A6), SmellyB_87 (A6), SuperAwesome_87 (A6), VohminGhazi_87 (A6), Wiks_88 (A6), Zulu_90 (A6),

Start 18:

- Found in 6 of 49 (12.2%) of genes in pham
- Manual Annotations of this start: 1 of 41
- Called 16.7% of time when present
- Phage (with cluster) where this start called: Twister_85 (A10),

Start 21:

- Found in 33 of 49 (67.3%) of genes in pham
- Manual Annotations of this start: 7 of 41
- Called 33.3% of time when present
- Phage (with cluster) where this start called: Candra_85 (A6), Chartreuse_85 (A6), EricB_85 (A6), Garak_90 (A6), GreedyLawyer_80 (A6), Helmet_90 (A6), Neeharika16_86 (A6), Priamo_88 (A6), SuperCallie99_83 (A6), Yokurt_88 (A6), Zaka_89 (A6),

Start 23:

- Found in 1 of 49 (2.0%) of genes in pham
- No Manual Annotations of this start.
- Called 100.0% of time when present
- Phage (with cluster) where this start called: WeiHuaDA_88 (A2),

Start 24:

- Found in 1 of 49 (2.0%) of genes in pham
- Manual Annotations of this start: 1 of 41
- Called 100.0% of time when present
- Phage (with cluster) where this start called: Kimona_86 (A19),

Summary by clusters:

There are 6 clusters represented in this pham: A10, A19, A3, A2, A7, A6,

Info for manual annotations of cluster A10:

- Start number 15 was manually annotated 5 times for cluster A10.
- Start number 18 was manually annotated 1 time for cluster A10.

Info for manual annotations of cluster A19:

- Start number 24 was manually annotated 1 time for cluster A19.

Info for manual annotations of cluster A3:

- Start number 13 was manually annotated 4 times for cluster A3.

Info for manual annotations of cluster A6:

- Start number 8 was manually annotated 1 time for cluster A6.
- Start number 16 was manually annotated 21 times for cluster A6.
- Start number 21 was manually annotated 7 times for cluster A6.

Info for manual annotations of cluster A7:

- Start number 11 was manually annotated 1 time for cluster A7.

Gene Information:

Gene: BABullseye_80 Start: 44890, Stop: 44648, Start Num: 16

Candidate Starts for BABullseye_80:

(1, 45139), (3, 45055), (4, 45031), (Start: 16 @44890 has 21 MA's), (Start: 21 @44866 has 7 MA's), (32, 44770), (35, 44686),

Gene: Blinn1_90 Start: 47426, Stop: 47145, Start Num: 8

Candidate Starts for Blinn1_90:

(Start: 8 @47426 has 1 MA's), (12, 47381), (17, 47366), (Start: 21 @47360 has 7 MA's), (28, 47309), (33, 47219), (34, 47216),

Gene: Blue7_90 Start: 46789, Stop: 46547, Start Num: 16

Candidate Starts for Blue7_90:

(1, 47038), (3, 46954), (4, 46930), (Start: 16 @46789 has 21 MA's), (Start: 21 @46765 has 7 MA's), (32, 46669),

Gene: BlueBird_89 Start: 48203, Stop: 47985, Start Num: 13

Candidate Starts for BlueBird_89:

(9, 48230), (Start: 13 @48203 has 4 MA's), (26, 48140), (30, 48122), (34, 48050),

Gene: Bugatti_88 Start: 48203, Stop: 47985, Start Num: 13

Candidate Starts for Bugatti_88:

(9, 48230), (Start: 13 @48203 has 4 MA's), (26, 48140), (30, 48122), (34, 48050),

Gene: Candra_85 Start: 46570, Stop: 46352, Start Num: 21

Candidate Starts for Candra_85:

(1, 46843), (3, 46759), (4, 46735), (Start: 16 @46594 has 21 MA's), (Start: 21 @46570 has 7 MA's), (32, 46474), (35, 46390),

Gene: Chartreuse_85 Start: 45871, Stop: 45653, Start Num: 21

Candidate Starts for Chartreuse_85:

(1, 46144), (3, 46060), (4, 46036), (Start: 16 @45895 has 21 MA's), (Start: 21 @45871 has 7 MA's), (32, 45775), (35, 45691),

Gene: Cookiedough_87 Start: 47203, Stop: 46961, Start Num: 16

Candidate Starts for Cookiedough_87:

(1, 47452), (3, 47368), (4, 47344), (Start: 16 @47203 has 21 MA's), (Start: 21 @47179 has 7 MA's), (32, 47083), (35, 46999),

Gene: DaVinci_85 Start: 45949, Stop: 45707, Start Num: 16

Candidate Starts for DaVinci_85:

(1, 46198), (3, 46114), (4, 46090), (Start: 16 @45949 has 21 MA's), (Start: 21 @45925 has 7 MA's), (32, 45829), (35, 45745),

Gene: Dorothea_87 Start: 47195, Stop: 46953, Start Num: 16

Candidate Starts for Dorothea_87:

(1, 47444), (3, 47360), (4, 47336), (Start: 16 @47195 has 21 MA's), (Start: 21 @47171 has 7 MA's), (32, 47075), (35, 46991),

Gene: Eaglepride_87 Start: 48695, Stop: 48462, Start Num: 15

Candidate Starts for Eaglepride_87:

(2, 48872), (7, 48776), (Start: 15 @48695 has 5 MA's), (Start: 18 @48680 has 1 MA's), (20, 48671), (34, 48527),

Gene: EricB_85 Start: 46068, Stop: 45850, Start Num: 21

Candidate Starts for EricB_85:

(1, 46341), (3, 46257), (4, 46233), (Start: 16 @46092 has 21 MA's), (Start: 21 @46068 has 7 MA's), (32, 45972), (35, 45888),

Gene: Garak_90 Start: 47008, Stop: 46790, Start Num: 21

Candidate Starts for Garak_90:

(1, 47281), (3, 47197), (4, 47173), (Start: 16 @47032 has 21 MA's), (Start: 21 @47008 has 7 MA's), (32, 46912),

Gene: Giroux_85 Start: 48202, Stop: 47984, Start Num: 13

Candidate Starts for Giroux_85:

(9, 48229), (Start: 13 @48202 has 4 MA's), (26, 48139), (30, 48121), (34, 48049),

Gene: GreedyLawyer_80 Start: 46501, Stop: 46283, Start Num: 21

Candidate Starts for GreedyLawyer_80:

(1, 46774), (3, 46690), (4, 46666), (Start: 16 @46525 has 21 MA's), (Start: 21 @46501 has 7 MA's), (32, 46405),

Gene: Helmet_90 Start: 47008, Stop: 46790, Start Num: 21

Candidate Starts for Helmet_90:

(1, 47281), (3, 47197), (4, 47173), (Start: 16 @47032 has 21 MA's), (Start: 21 @47008 has 7 MA's), (32, 46912),

Gene: Hoot_82 Start: 44409, Stop: 44167, Start Num: 16

Candidate Starts for Hoot_82:

(1, 44658), (3, 44574), (4, 44550), (Start: 16 @44409 has 21 MA's), (Start: 21 @44385 has 7 MA's), (32, 44289), (35, 44205),

Gene: Indra_92 Start: 47033, Stop: 46791, Start Num: 16

Candidate Starts for Indra_92:

(1, 47282), (3, 47198), (4, 47174), (Start: 16 @47033 has 21 MA's), (Start: 21 @47009 has 7 MA's), (32, 46913),

Gene: Isiphiwo_83 Start: 46120, Stop: 45878, Start Num: 16

Candidate Starts for Isiphiwo_83:

(1, 46369), (3, 46285), (4, 46261), (Start: 16 @46120 has 21 MA's), (Start: 21 @46096 has 7 MA's), (32, 46000), (35, 45916), (36, 45895),

Gene: JewelBug_79 Start: 44888, Stop: 44646, Start Num: 16

Candidate Starts for JewelBug_79:

(1, 45137), (3, 45053), (4, 45029), (Start: 16 @44888 has 21 MA's), (Start: 21 @44864 has 7 MA's), (32, 44768),

Gene: Jordennis_85 Start: 46792, Stop: 46550, Start Num: 16

Candidate Starts for Jordennis_85:

(1, 47041), (3, 46957), (4, 46933), (Start: 16 @46792 has 21 MA's), (Start: 21 @46768 has 7 MA's), (32, 46672),

Gene: Kazan_88 Start: 46564, Stop: 46322, Start Num: 16

Candidate Starts for Kazan_88:

(1, 46813), (3, 46729), (4, 46705), (Start: 16 @46564 has 21 MA's), (Start: 21 @46540 has 7 MA's), (32, 46444), (35, 46360),

Gene: Kimona_86 Start: 47954, Stop: 47757, Start Num: 24

Candidate Starts for Kimona_86:

(14, 48005), (Start: 24 @47954 has 1 MA's), (33, 47828),

Gene: Kipper29_87 Start: 46567, Stop: 46325, Start Num: 16

Candidate Starts for Kipper29_87:

(1, 46816), (3, 46732), (4, 46708), (Start: 16 @46567 has 21 MA's), (Start: 21 @46543 has 7 MA's), (32, 46447), (35, 46363),

Gene: Koko_90 Start: 47422, Stop: 47180, Start Num: 16

Candidate Starts for Koko_90:

(1, 47671), (3, 47587), (4, 47563), (Start: 16 @47422 has 21 MA's), (Start: 21 @47398 has 7 MA's), (32, 47302),

Gene: Kristoff_82 Start: 49033, Stop: 48797, Start Num: 15

Candidate Starts for Kristoff_82:

(9, 49066), (Start: 15 @49033 has 5 MA's), (Start: 18 @49018 has 1 MA's), (20, 49009), (30, 48940), (34, 48862), (35, 48829),

Gene: McFly_87 Start: 46903, Stop: 46661, Start Num: 16

Candidate Starts for McFly_87:

(1, 47152), (3, 47068), (4, 47044), (Start: 16 @46903 has 21 MA's), (Start: 21 @46879 has 7 MA's), (32, 46783), (35, 46699),

Gene: Neeharika16_86 Start: 46630, Stop: 46412, Start Num: 21

Candidate Starts for Neeharika16_86:

(1, 46903), (3, 46819), (4, 46795), (Start: 16 @46654 has 21 MA's), (Start: 21 @46630 has 7 MA's), (32, 46534), (35, 46450),

Gene: Newrala_86 Start: 47000, Stop: 46758, Start Num: 16

Candidate Starts for Newrala_86:

(1, 47249), (3, 47165), (4, 47141), (Start: 16 @47000 has 21 MA's), (Start: 21 @46976 has 7 MA's), (32, 46880),

Gene: Pistachio_87 Start: 47750, Stop: 47532, Start Num: 13

Candidate Starts for Pistachio_87:

(9, 47777), (Start: 13 @47750 has 4 MA's), (26, 47687), (30, 47669), (34, 47597),

Gene: Pmask_86 Start: 47201, Stop: 46959, Start Num: 16

Candidate Starts for Pmask_86:

(1, 47450), (3, 47366), (4, 47342), (Start: 16 @47201 has 21 MA's), (Start: 21 @47177 has 7 MA's), (32, 47081),

Gene: Priamo_88 Start: 46420, Stop: 46202, Start Num: 21

Candidate Starts for Priamo_88:

(1, 46693), (3, 46609), (4, 46585), (Start: 16 @46444 has 21 MA's), (Start: 21 @46420 has 7 MA's), (32, 46324), (35, 46240),

Gene: Puppy_88 Start: 47820, Stop: 47602, Start Num: 13

Candidate Starts for Puppy_88:

(9, 47847), (Start: 13 @47820 has 4 MA's), (26, 47757), (30, 47739), (34, 47667),

Gene: Rebeuca_85 Start: 49034, Stop: 48798, Start Num: 15

Candidate Starts for Rebeuca_85:

(9, 49067), (Start: 15 @49034 has 5 MA's), (Start: 18 @49019 has 1 MA's), (20, 49010), (30, 48941), (34, 48863), (35, 48830),

Gene: SaturnRing_88 Start: 48203, Stop: 47985, Start Num: 13
Candidate Starts for SaturnRing_88:
(9, 48230), (Start: 13 @48203 has 4 MA's), (26, 48140), (30, 48122), (34, 48050),

Gene: SmellyB_87 Start: 46558, Stop: 46316, Start Num: 16
Candidate Starts for SmellyB_87:
(1, 46807), (3, 46723), (4, 46699), (Start: 16 @46558 has 21 MA's), (Start: 21 @46534 has 7 MA's),
(32, 46438), (35, 46354),

Gene: SuperAwesome_87 Start: 47240, Stop: 46998, Start Num: 16
Candidate Starts for SuperAwesome_87:
(1, 47489), (3, 47405), (4, 47381), (Start: 16 @47240 has 21 MA's), (Start: 21 @47216 has 7 MA's),
(32, 47120),

Gene: SuperCallie99_83 Start: 46597, Stop: 46379, Start Num: 21
Candidate Starts for SuperCallie99_83:
(1, 46870), (3, 46786), (4, 46762), (Start: 16 @46621 has 21 MA's), (Start: 21 @46597 has 7 MA's),
(32, 46501), (35, 46417),

Gene: TNguyen7_88 Start: 48161, Stop: 47943, Start Num: 13
Candidate Starts for TNguyen7_88:
(9, 48188), (Start: 13 @48161 has 4 MA's), (26, 48098), (30, 48080), (34, 48008),

Gene: Timshel_82 Start: 50786, Stop: 50517, Start Num: 11
Candidate Starts for Timshel_82:
(10, 50789), (Start: 11 @50786 has 1 MA's), (22, 50735), (27, 50684), (34, 50594),

Gene: Topanga_74 Start: 45508, Stop: 45263, Start Num: 15
Candidate Starts for Topanga_74:
(2, 45685), (Start: 15 @45508 has 5 MA's), (Start: 18 @45493 has 1 MA's), (20, 45484), (30, 45415),
(34, 45337), (35, 45304),

Gene: Twister_85 Start: 48707, Stop: 48477, Start Num: 18
Candidate Starts for Twister_85:
(2, 48899), (7, 48803), (Start: 15 @48722 has 5 MA's), (Start: 18 @48707 has 1 MA's), (20, 48698),
(30, 48629), (34, 48551), (35, 48518),

Gene: VohminGhazi_87 Start: 46559, Stop: 46317, Start Num: 16
Candidate Starts for VohminGhazi_87:
(1, 46808), (3, 46724), (4, 46700), (Start: 16 @46559 has 21 MA's), (Start: 21 @46535 has 7 MA's),
(32, 46439), (35, 46355),

Gene: WalterMcMickey_84 Start: 48722, Stop: 48477, Start Num: 15
Candidate Starts for WalterMcMickey_84:
(2, 48899), (7, 48803), (Start: 15 @48722 has 5 MA's), (Start: 18 @48707 has 1 MA's), (20, 48698),
(30, 48629), (34, 48551), (35, 48518),

Gene: WeiHuaDA_88 Start: 49575, Stop: 49372, Start Num: 23
Candidate Starts for WeiHuaDA_88:
(5, 49722), (6, 49710), (19, 49590), (23, 49575), (25, 49551), (29, 49524), (31, 49500), (34, 49440),

Gene: Wiks_88 Start: 46663, Stop: 46421, Start Num: 16

Candidate Starts for Wiks_88:

(1, 46912), (3, 46828), (4, 46804), (Start: 16 @46663 has 21 MA's), (Start: 21 @46639 has 7 MA's), (32, 46543),

Gene: Yokurt_88 Start: 46639, Stop: 46421, Start Num: 21

Candidate Starts for Yokurt_88:

(1, 46912), (3, 46828), (4, 46804), (Start: 16 @46663 has 21 MA's), (Start: 21 @46639 has 7 MA's), (32, 46543),

Gene: Zaka_89 Start: 46639, Stop: 46421, Start Num: 21

Candidate Starts for Zaka_89:

(1, 46912), (3, 46828), (4, 46804), (Start: 16 @46663 has 21 MA's), (Start: 21 @46639 has 7 MA's), (32, 46543),

Gene: Zulu_90 Start: 47040, Stop: 46798, Start Num: 16

Candidate Starts for Zulu_90:

(1, 47289), (3, 47205), (4, 47181), (Start: 16 @47040 has 21 MA's), (Start: 21 @47016 has 7 MA's), (32, 46920), (35, 46836),