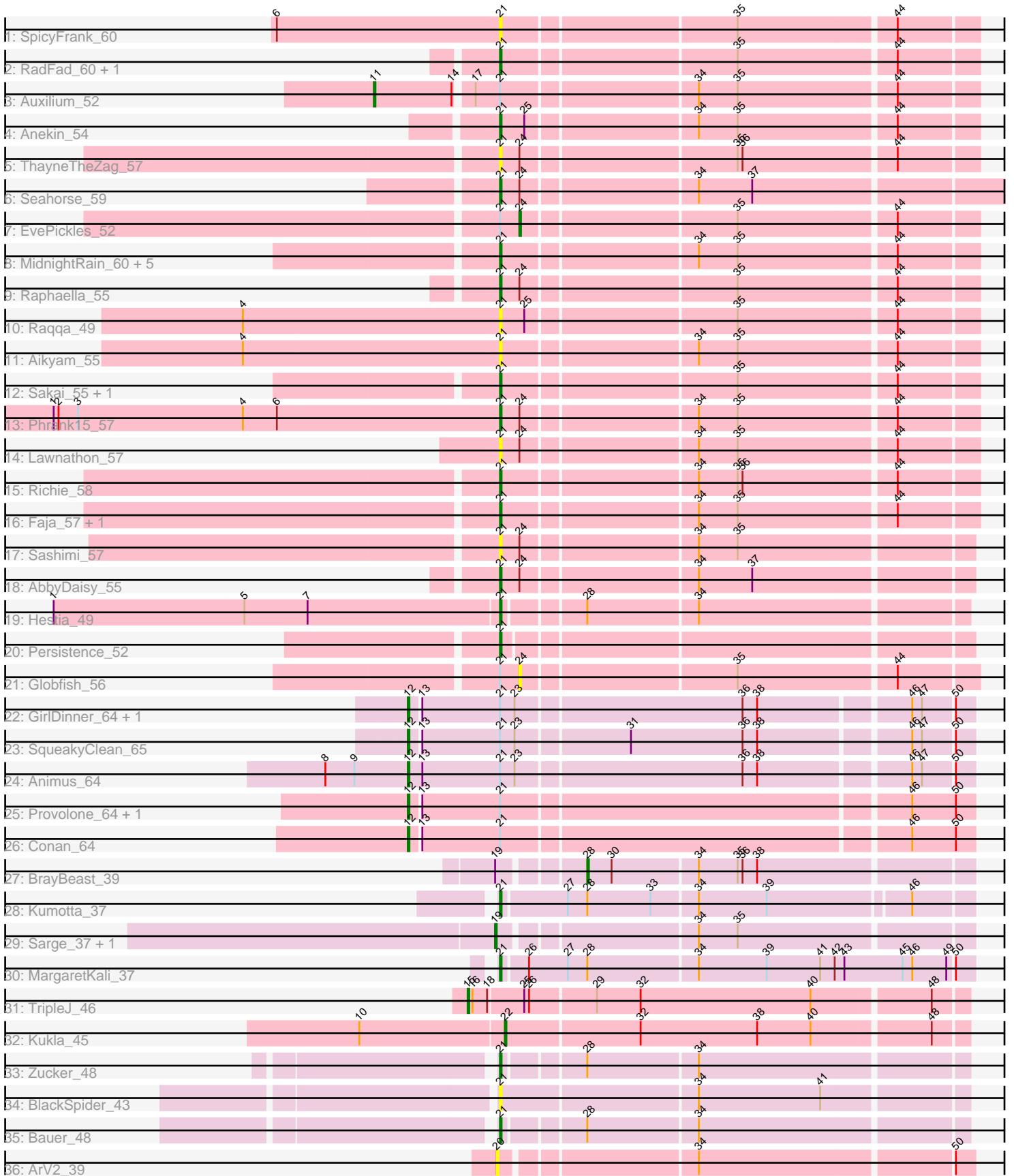


Pham 196622



Note: Tracks are now grouped by subcluster and scaled. Switching in subcluster is indicated by changes in track color. Track scale is now set by default to display the region 30 bp upstream of start 1 to 30 bp downstream of the last possible start. If this default region is judged to be packed too tightly with annotated starts, the track will be further scaled to only show that region of the ORF with annotated starts. This action will be indicated by adding "Zoomed" to the title. For starts, yellow indicates the location of called starts comprised solely of Glimmer/GeneMark auto-annotations, green indicates the location of called starts with at least 1 manual gene annotation.

Pham 196622 Report

This analysis was run 12/09/24 on database version 580.

Pham number 196622 has 47 members, 13 are drafts.

Phages represented in each track:

- Track 1 : SpicyFrank_60
- Track 2 : RadFad_60, Hillester_60
- Track 3 : Auxilium_52
- Track 4 : Anekin_54
- Track 5 : ThayneTheZag_57
- Track 6 : Seahorse_59
- Track 7 : EvePickles_52
- Track 8 : MidnightRain_60, BenchScraper_55, BillyTP_58, CookieBear_56, Isolde_55, YoungHarleezy_56
- Track 9 : Raphaella_55
- Track 10 : Raqqa_49
- Track 11 : Aikyam_55
- Track 12 : Sakai_55, Gorpy_56
- Track 13 : Phrank15_57
- Track 14 : Lawnathon_57
- Track 15 : Richie_58
- Track 16 : Faja_57, Tiff81_56
- Track 17 : Sashimi_57
- Track 18 : AbbyDaisy_55
- Track 19 : Hestia_49
- Track 20 : Persistence_52
- Track 21 : Globfish_56
- Track 22 : GirlDinner_64, Janus_65
- Track 23 : SqueakyClean_65
- Track 24 : Animus_64
- Track 25 : Provolone_64, ElGato_64
- Track 26 : Conan_64
- Track 27 : BrayBeast_39
- Track 28 : Kumotta_37
- Track 29 : Sarge_37, Shoya_43
- Track 30 : MargaretKali_37
- Track 31 : TripleJ_46
- Track 32 : Kukla_45
- Track 33 : Zucker_48
- Track 34 : BlackSpider_43
- Track 35 : Bauer_48
- Track 36 : ArV2_39

Summary of Final Annotations (See graph section above for start numbers):

The start number called the most often in the published annotations is 21, it was called in 20 of the 34 non-draft genes in the pham.

Genes that call this "Most Annotated" start:

- AbbyDaisy_55, Aikyam_55, Anekin_54, Bauer_48, BenchScraper_55, BillyTP_58, BlackSpider_43, CookieBear_56, Faja_57, Gorpy_56, Hestia_49, Hillester_60, Isolde_55, Kumotta_37, Lawnathon_57, MargaretKali_37, MidnightRain_60, Persistence_52, Phrank15_57, RadFad_60, Raphaella_55, Raqqa_49, Richie_58, Sakai_55, Sashimi_57, Seahorse_59, SpicyFrank_60, ThayneTheZag_57, Tiff81_56, YoungHarleezy_56, Zucker_48,

Genes that have the "Most Annotated" start but do not call it:

- Animus_64, Auxilium_52, Conan_64, ElGato_64, EvePickles_52, GirlDinner_64, Globfish_56, Janus_65, Provolone_64, SqueakyClean_65,

Genes that do not have the "Most Annotated" start:

- ArV2_39, BrayBeast_39, Kukla_45, Sarge_37, Shoya_43, TripleJ_46,

Summary by start number:

Start 11:

- Found in 1 of 47 (2.1%) of genes in pham
- Manual Annotations of this start: 1 of 34
- Called 100.0% of time when present
- Phage (with cluster) where this start called: Auxilium_52 (AY),

Start 12:

- Found in 7 of 47 (14.9%) of genes in pham
- Manual Annotations of this start: 7 of 34
- Called 100.0% of time when present
- Phage (with cluster) where this start called: Animus_64 (BD2), Conan_64 (BD3), ElGato_64 (BD3), GirlDinner_64 (BD2), Janus_65 (BD2), Provolone_64 (BD3), SqueakyClean_65 (BD2),

Start 15:

- Found in 1 of 47 (2.1%) of genes in pham
- Manual Annotations of this start: 1 of 34
- Called 100.0% of time when present
- Phage (with cluster) where this start called: TripleJ_46 (FJ),

Start 19:

- Found in 3 of 47 (6.4%) of genes in pham
- Manual Annotations of this start: 2 of 34
- Called 66.7% of time when present
- Phage (with cluster) where this start called: Sarge_37 (FB), Shoya_43 (FB),

Start 20:

- Found in 1 of 47 (2.1%) of genes in pham
- No Manual Annotations of this start.
- Called 100.0% of time when present
- Phage (with cluster) where this start called: ArV2_39 (singleton),

Start 21:

- Found in 41 of 47 (87.2%) of genes in pham
- Manual Annotations of this start: 20 of 34
- Called 75.6% of time when present
- Phage (with cluster) where this start called: AbbyDaisy_55 (AY), Aikyam_55 (AY), Anekin_54 (AY), Bauer_48 (FN), BenchScraper_55 (AY), BillyTP_58 (AY), BlackSpider_43 (FN), CookieBear_56 (AY), Faja_57 (AY), Gorpy_56 (AY), Hestia_49 (AY), Hillester_60 (AY), Isolde_55 (AY), Kumotta_37 (FB), Lawnathon_57 (AY), MargaretKali_37 (FB), MidnightRain_60 (AY), Persistence_52 (AY), Phrank15_57 (AY), RadFad_60 (AY), Raphaella_55 (AY), Raqqa_49 (AY), Richie_58 (AY), Sakai_55 (AY), Sashimi_57 (AY), Seahorse_59 (AY), SpicyFrank_60 (AY), ThayneTheZag_57 (AY), Tiff81_56 (AY), YoungHarleezy_56 (AY), Zucker_48 (FN),

Start 22:

- Found in 1 of 47 (2.1%) of genes in pham
- Manual Annotations of this start: 1 of 34
- Called 100.0% of time when present
- Phage (with cluster) where this start called: Kukla_45 (FJ),

Start 24:

- Found in 9 of 47 (19.1%) of genes in pham
- Manual Annotations of this start: 1 of 34
- Called 22.2% of time when present
- Phage (with cluster) where this start called: EvePickles_52 (AY), Globfish_56 (AY),

Start 28:

- Found in 6 of 47 (12.8%) of genes in pham
- Manual Annotations of this start: 1 of 34
- Called 16.7% of time when present
- Phage (with cluster) where this start called: BrayBeast_39 (FB),

Summary by clusters:

There are 7 clusters represented in this pham: singleton, FB, BD3, BD2, AY, FJ, FN,

Info for manual annotations of cluster AY:

- Start number 11 was manually annotated 1 time for cluster AY.
- Start number 21 was manually annotated 16 times for cluster AY.
- Start number 24 was manually annotated 1 time for cluster AY.

Info for manual annotations of cluster BD2:

- Start number 12 was manually annotated 4 times for cluster BD2.

Info for manual annotations of cluster BD3:

- Start number 12 was manually annotated 3 times for cluster BD3.

Info for manual annotations of cluster FB:

- Start number 19 was manually annotated 2 times for cluster FB.

- Start number 21 was manually annotated 2 times for cluster FB.
- Start number 28 was manually annotated 1 time for cluster FB.

Info for manual annotations of cluster FJ:

- Start number 15 was manually annotated 1 time for cluster FJ.
- Start number 22 was manually annotated 1 time for cluster FJ.

Info for manual annotations of cluster FN:

- Start number 21 was manually annotated 2 times for cluster FN.

Gene Information:

Gene: AbbyDaisy_55 Start: 33488, Stop: 33763, Start Num: 21

Candidate Starts for AbbyDaisy_55:

(Start: 21 @33488 has 20 MA's), (Start: 24 @33500 has 1 MA's), (34, 33602), (37, 33635),

Gene: Aikyam_55 Start: 31597, Stop: 31875, Start Num: 21

Candidate Starts for Aikyam_55:

(4, 31441), (Start: 21 @31597 has 20 MA's), (34, 31711), (35, 31735), (44, 31828),

Gene: Anekin_54 Start: 33269, Stop: 33547, Start Num: 21

Candidate Starts for Anekin_54:

(Start: 21 @33269 has 20 MA's), (25, 33284), (34, 33383), (35, 33407), (44, 33500),

Gene: Animus_64 Start: 43827, Stop: 43495, Start Num: 12

Candidate Starts for Animus_64:

(8, 43878), (9, 43860), (Start: 12 @43827 has 7 MA's), (13, 43818), (Start: 21 @43770 has 20 MA's), (23, 43761), (36, 43626), (38, 43617), (46, 43530), (47, 43524), (50, 43506),

Gene: ArV2_39 Start: 25620, Stop: 25892, Start Num: 20

Candidate Starts for ArV2_39:

(20, 25620), (34, 25731), (50, 25881),

Gene: Auxilium_52 Start: 30682, Stop: 31032, Start Num: 11

Candidate Starts for Auxilium_52:

(Start: 11 @30682 has 1 MA's), (14, 30730), (17, 30739), (Start: 21 @30754 has 20 MA's), (34, 30868), (35, 30892), (44, 30985),

Gene: Bauer_48 Start: 30759, Stop: 31028, Start Num: 21

Candidate Starts for Bauer_48:

(Start: 21 @30759 has 20 MA's), (Start: 28 @30804 has 1 MA's), (34, 30870),

Gene: BenchScraper_55 Start: 32919, Stop: 33197, Start Num: 21

Candidate Starts for BenchScraper_55:

(Start: 21 @32919 has 20 MA's), (34, 33033), (35, 33057), (44, 33150),

Gene: BillyTP_58 Start: 34791, Stop: 35069, Start Num: 21

Candidate Starts for BillyTP_58:

(Start: 21 @34791 has 20 MA's), (34, 34905), (35, 34929), (44, 35022),

Gene: BlackSpider_43 Start: 29911, Stop: 30186, Start Num: 21

Candidate Starts for BlackSpider_43:
(Start: 21 @29911 has 20 MA's), (34, 30028), (41, 30103),

Gene: BrayBeast_39 Start: 26993, Stop: 27220, Start Num: 28
Candidate Starts for BrayBeast_39:
(Start: 19 @26948 has 2 MA's), (Start: 28 @26993 has 1 MA's), (30, 27008), (34, 27059), (35, 27083),
(36, 27086), (38, 27095),

Gene: Conan_64 Start: 43034, Stop: 42702, Start Num: 12
Candidate Starts for Conan_64:
(Start: 12 @43034 has 7 MA's), (13, 43028), (Start: 21 @42980 has 20 MA's), (46, 42740), (50,
42713),

Gene: CookieBear_56 Start: 33175, Stop: 33453, Start Num: 21
Candidate Starts for CookieBear_56:
(Start: 21 @33175 has 20 MA's), (34, 33289), (35, 33313), (44, 33406),

Gene: ElGato_64 Start: 42905, Stop: 42573, Start Num: 12
Candidate Starts for ElGato_64:
(Start: 12 @42905 has 7 MA's), (13, 42899), (Start: 21 @42851 has 20 MA's), (46, 42611), (50,
42584),

Gene: EvePickles_52 Start: 33387, Stop: 33653, Start Num: 24
Candidate Starts for EvePickles_52:
(Start: 21 @33375 has 20 MA's), (Start: 24 @33387 has 1 MA's), (35, 33513), (44, 33606),

Gene: Faja_57 Start: 34759, Stop: 35037, Start Num: 21
Candidate Starts for Faja_57:
(Start: 21 @34759 has 20 MA's), (34, 34873), (35, 34897), (44, 34990),

Gene: GirlDinner_64 Start: 43325, Stop: 42996, Start Num: 12
Candidate Starts for GirlDinner_64:
(Start: 12 @43325 has 7 MA's), (13, 43319), (Start: 21 @43271 has 20 MA's), (23, 43262), (36,
43127), (38, 43118), (46, 43031), (47, 43025), (50, 43007),

Gene: Globfish_56 Start: 33286, Stop: 33552, Start Num: 24
Candidate Starts for Globfish_56:
(Start: 21 @33274 has 20 MA's), (Start: 24 @33286 has 1 MA's), (35, 33412), (44, 33505),

Gene: Gorpy_56 Start: 34167, Stop: 34445, Start Num: 21
Candidate Starts for Gorpy_56:
(Start: 21 @34167 has 20 MA's), (35, 34305), (44, 34398),

Gene: Hestia_49 Start: 30820, Stop: 31089, Start Num: 21
Candidate Starts for Hestia_49:
(1, 30547), (5, 30664), (7, 30703), (Start: 21 @30820 has 20 MA's), (Start: 28 @30865 has 1 MA's),
(34, 30931),

Gene: Hillester_60 Start: 34520, Stop: 34798, Start Num: 21
Candidate Starts for Hillester_60:
(Start: 21 @34520 has 20 MA's), (35, 34658), (44, 34751),

Gene: Isolde_55 Start: 32844, Stop: 33122, Start Num: 21

Candidate Starts for Isolde_55:

(Start: 21 @32844 has 20 MA's), (34, 32958), (35, 32982), (44, 33075),

Gene: Janus_65 Start: 43665, Stop: 43336, Start Num: 12

Candidate Starts for Janus_65:

(Start: 12 @43665 has 7 MA's), (13, 43659), (Start: 21 @43611 has 20 MA's), (23, 43602), (36, 43467), (38, 43458), (46, 43371), (47, 43365), (50, 43347),

Gene: Kukla_45 Start: 31182, Stop: 31457, Start Num: 22

Candidate Starts for Kukla_45:

(10, 31095), (Start: 22 @31182 has 1 MA's), (32, 31263), (38, 31335), (40, 31368), (48, 31437),

Gene: Kumotta_37 Start: 27134, Stop: 27412, Start Num: 21

Candidate Starts for Kumotta_37:

(Start: 21 @27134 has 20 MA's), (27, 27173), (Start: 28 @27185 has 1 MA's), (33, 27224), (34, 27251), (39, 27293), (46, 27377),

Gene: Lawnathon_57 Start: 33336, Stop: 33614, Start Num: 21

Candidate Starts for Lawnathon_57:

(Start: 21 @33336 has 20 MA's), (Start: 24 @33348 has 1 MA's), (34, 33450), (35, 33474), (44, 33567),

Gene: MargaretKali_37 Start: 26763, Stop: 27047, Start Num: 21

Candidate Starts for MargaretKali_37:

(Start: 21 @26763 has 20 MA's), (26, 26778), (27, 26802), (Start: 28 @26814 has 1 MA's), (34, 26880), (39, 26922), (41, 26955), (42, 26964), (43, 26970), (45, 27006), (46, 27012), (49, 27033), (50, 27036),

Gene: MidnightRain_60 Start: 34697, Stop: 34975, Start Num: 21

Candidate Starts for MidnightRain_60:

(Start: 21 @34697 has 20 MA's), (34, 34811), (35, 34835), (44, 34928),

Gene: Persistence_52 Start: 32315, Stop: 32587, Start Num: 21

Candidate Starts for Persistence_52:

(Start: 21 @32315 has 20 MA's),

Gene: Phrank15_57 Start: 33473, Stop: 33751, Start Num: 21

Candidate Starts for Phrank15_57:

(1, 33200), (2, 33203), (3, 33215), (4, 33317), (6, 33338), (Start: 21 @33473 has 20 MA's), (Start: 24 @33485 has 1 MA's), (34, 33587), (35, 33611), (44, 33704),

Gene: Provolone_64 Start: 43117, Stop: 42785, Start Num: 12

Candidate Starts for Provolone_64:

(Start: 12 @43117 has 7 MA's), (13, 43111), (Start: 21 @43063 has 20 MA's), (46, 42823), (50, 42796),

Gene: RadFad_60 Start: 34520, Stop: 34798, Start Num: 21

Candidate Starts for RadFad_60:

(Start: 21 @34520 has 20 MA's), (35, 34658), (44, 34751),

Gene: Raphaella_55 Start: 32779, Stop: 33057, Start Num: 21

Candidate Starts for Raphaella_55:

(Start: 21 @32779 has 20 MA's), (Start: 24 @32791 has 1 MA's), (35, 32917), (44, 33010),

Gene: Raqqa_49 Start: 30784, Stop: 31062, Start Num: 21

Candidate Starts for Raqqa_49:

(4, 30628), (Start: 21 @30784 has 20 MA's), (25, 30799), (35, 30922), (44, 31015),

Gene: Richie_58 Start: 33845, Stop: 34123, Start Num: 21

Candidate Starts for Richie_58:

(Start: 21 @33845 has 20 MA's), (34, 33959), (35, 33983), (36, 33986), (44, 34076),

Gene: Sakai_55 Start: 32878, Stop: 33156, Start Num: 21

Candidate Starts for Sakai_55:

(Start: 21 @32878 has 20 MA's), (35, 33016), (44, 33109),

Gene: Sarge_37 Start: 25294, Stop: 25566, Start Num: 19

Candidate Starts for Sarge_37:

(Start: 19 @25294 has 2 MA's), (34, 25405), (35, 25429),

Gene: Sashimi_57 Start: 34105, Stop: 34380, Start Num: 21

Candidate Starts for Sashimi_57:

(Start: 21 @34105 has 20 MA's), (Start: 24 @34117 has 1 MA's), (34, 34219), (35, 34243),

Gene: Seahorse_59 Start: 35114, Stop: 35410, Start Num: 21

Candidate Starts for Seahorse_59:

(Start: 21 @35114 has 20 MA's), (Start: 24 @35126 has 1 MA's), (34, 35228), (37, 35261),

Gene: Shoya_43 Start: 27262, Stop: 27534, Start Num: 19

Candidate Starts for Shoya_43:

(Start: 19 @27262 has 2 MA's), (34, 27373), (35, 27397),

Gene: SpicyFrank_60 Start: 34383, Stop: 34661, Start Num: 21

Candidate Starts for SpicyFrank_60:

(6, 34248), (Start: 21 @34383 has 20 MA's), (35, 34521), (44, 34614),

Gene: SqueakyClean_65 Start: 43843, Stop: 43514, Start Num: 12

Candidate Starts for SqueakyClean_65:

(Start: 12 @43843 has 7 MA's), (13, 43837), (Start: 21 @43789 has 20 MA's), (23, 43780), (31, 43714), (36, 43645), (38, 43636), (46, 43549), (47, 43543), (50, 43525),

Gene: ThayneTheZag_57 Start: 32952, Stop: 33230, Start Num: 21

Candidate Starts for ThayneTheZag_57:

(Start: 21 @32952 has 20 MA's), (Start: 24 @32964 has 1 MA's), (35, 33090), (36, 33093), (44, 33183),

Gene: Tiff81_56 Start: 31289, Stop: 31567, Start Num: 21

Candidate Starts for Tiff81_56:

(Start: 21 @31289 has 20 MA's), (34, 31403), (35, 31427), (44, 31520),

Gene: TripleJ_46 Start: 31114, Stop: 31410, Start Num: 15

Candidate Starts for TripleJ_46:

(Start: 15 @31114 has 1 MA's), (16, 31117), (18, 31126), (25, 31147), (26, 31150), (29, 31189), (32, 31216), (40, 31321), (48, 31390),

Gene: YoungHarleezy_56 Start: 33342, Stop: 33620, Start Num: 21

Candidate Starts for YoungHarleezy_56:

(Start: 21 @33342 has 20 MA's), (34, 33456), (35, 33480), (44, 33573),

Gene: Zucker_48 Start: 31843, Stop: 32112, Start Num: 21

Candidate Starts for Zucker_48:

(Start: 21 @31843 has 20 MA's), (Start: 28 @31888 has 1 MA's), (34, 31954),