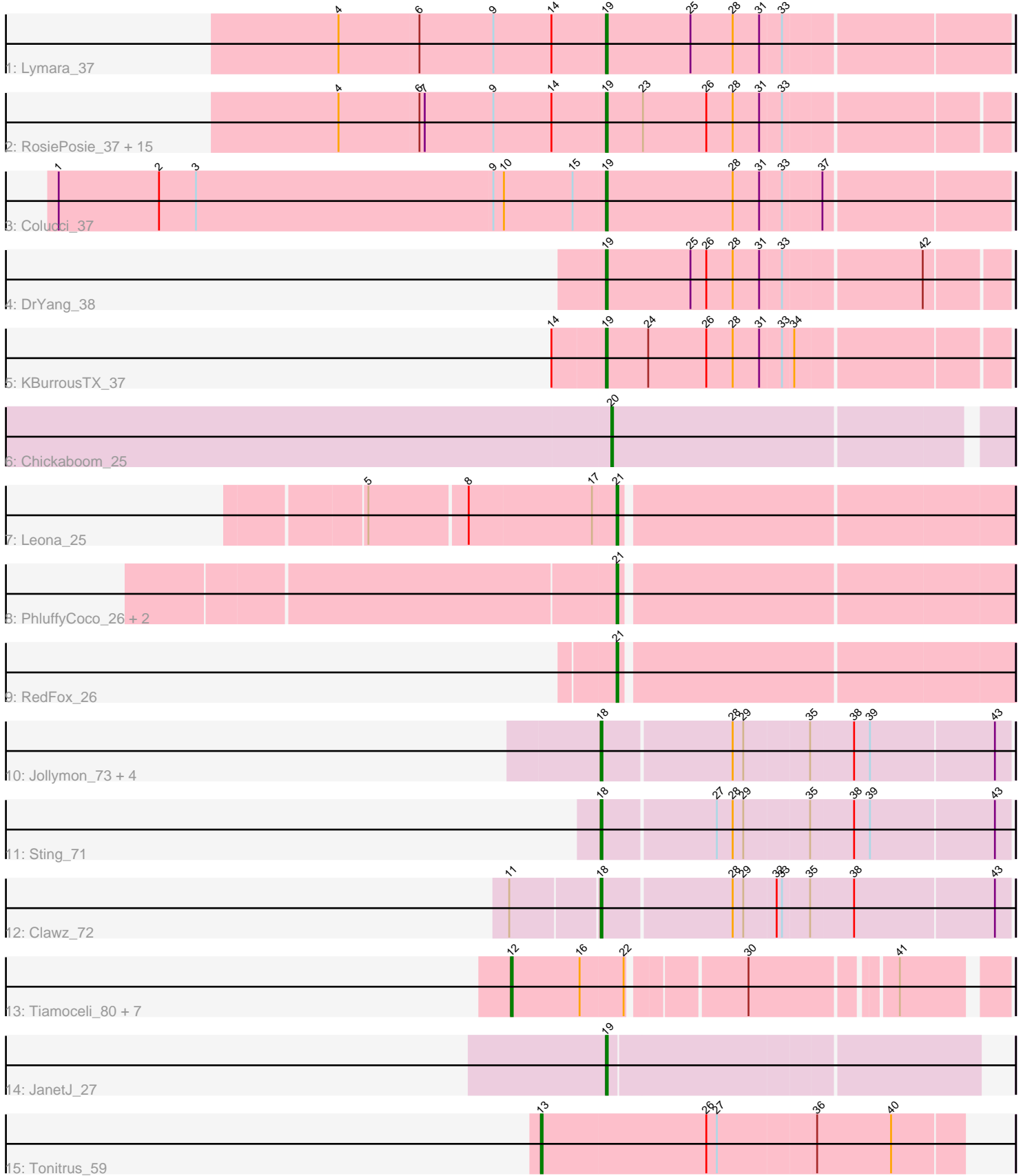


Pham 196645



Note: Tracks are now grouped by subcluster and scaled. Switching in subcluster is indicated by changes in track color. Track scale is now set by default to display the region 30 bp upstream of start 1 to 30 bp downstream of the last possible start. If this default region is judged to be packed too tightly with annotated starts, the track will be further scaled to only show that region of the ORF with annotated starts. This action will be indicated by adding "Zoomed" to the title. For starts, yellow indicates the location of called starts comprised solely of Glimmer/GeneMark auto-annotations, green indicates the location of called starts with at least 1 manual gene annotation.

Pham 196645 Report

This analysis was run 12/09/24 on database version 580.

Pham number 196645 has 43 members, 8 are drafts.

Phages represented in each track:

- Track 1 : Lymara_37
- Track 2 : RosiePosie_37, EdgarPoe_37, Mordred_37, Linus_37, Chocolat_37, Tophat_37, JayCookie_37, HumptyDumpty_37, Chipper1996_370, MoyaNatalis_37, Kabreeze_37, Conboy_37, Scavito_37, PrincessTrina_37, JaNo_37, Chubster_37
- Track 3 : Colucci_37
- Track 4 : DrYang_38
- Track 5 : KBurrousTX_37
- Track 6 : Chickaboom_25
- Track 7 : Leona_25
- Track 8 : PhluffyCoco_26, KHumphrey_26, Camara_26
- Track 9 : RedFox_26
- Track 10 : Jollymon_73, Soos_68, KingstonB_73, ColdSoup_73, DonTron_72
- Track 11 : Sting_71
- Track 12 : Clawz_72
- Track 13 : Tiamoceli_80, Chickadee_87, Twonlo_84, EdmundFerry_85, GTE6_86, RoadKill_84, Kwekel_87, Dextert_82
- Track 14 : JanetJ_27
- Track 15 : Tonitrus_59

Summary of Final Annotations (See graph section above for start numbers):

The start number called the most often in the published annotations is 19, it was called in 20 of the 35 non-draft genes in the pham.

Genes that call this "Most Annotated" start:

- Chipper1996_370, Chocolat_37, Chubster_37, Colucci_37, Conboy_37, DrYang_38, EdgarPoe_37, HumptyDumpty_37, JaNo_37, JanetJ_27, JayCookie_37, KBurrousTX_37, Kabreeze_37, Linus_37, Lymara_37, Mordred_37, MoyaNatalis_37, PrincessTrina_37, RosiePosie_37, Scavito_37, Tophat_37,

Genes that have the "Most Annotated" start but do not call it:

-

Genes that do not have the "Most Annotated" start:

- Camara_26, Chickaboom_25, Chickadee_87, Clawz_72, ColdSoup_73, Dxdert_82, DonTron_72, EdmundFerry_85, GTE6_86, Jollymon_73, KHumphrey_26, KingstonB_73, Kwekel_87, Leona_25, PhluffyCoco_26, RedFox_26, RoadKill_84, Soos_68, Sting_71, Tiamoceli_80, Tonitrus_59, Twonlo_84,

Summary by start number:

Start 12:

- Found in 8 of 43 (18.6%) of genes in pham
- Manual Annotations of this start: 7 of 35
- Called 100.0% of time when present
- Phage (with cluster) where this start called: Chickadee_87 (DE3), Dxdert_82 (DE3), EdmundFerry_85 (DE3), GTE6_86 (DE3), Kwekel_87 (DE3), RoadKill_84 (DE3), Tiamoceli_80 (DE3), Twonlo_84 (DE3),

Start 13:

- Found in 1 of 43 (2.3%) of genes in pham
- Manual Annotations of this start: 1 of 35
- Called 100.0% of time when present
- Phage (with cluster) where this start called: Tonitrus_59 (singleton),

Start 18:

- Found in 7 of 43 (16.3%) of genes in pham
- Manual Annotations of this start: 3 of 35
- Called 100.0% of time when present
- Phage (with cluster) where this start called: Clawz_72 (CP), ColdSoup_73 (CP), DonTron_72 (CP), Jollymon_73 (CP), KingstonB_73 (CP), Soos_68 (CP), Sting_71 (CP),

Start 19:

- Found in 21 of 43 (48.8%) of genes in pham
- Manual Annotations of this start: 20 of 35
- Called 100.0% of time when present
- Phage (with cluster) where this start called: Chipper1996_370 (AR), Chocolat_37 (AR), Chubster_37 (AR), Colucci_37 (AR), Conboy_37 (AR), DrYang_38 (AR), EdgarPoe_37 (AR), HumptyDumpty_37 (AR), JaNo_37 (AR), JanetJ_27 (FO), JayCookie_37 (AR), KBurrousTX_37 (AR), Kabreeze_37 (AR), Linus_37 (AR), Lymara_37 (AR), Mordred_37 (AR), MoyaNatalis_37 (AR), PrincessTrina_37 (AR), RosiePosie_37 (AR), Scavito_37 (AR), Tophat_37 (AR),

Start 20:

- Found in 1 of 43 (2.3%) of genes in pham
- Manual Annotations of this start: 1 of 35
- Called 100.0% of time when present
- Phage (with cluster) where this start called: Chickaboom_25 (AS1),

Start 21:

- Found in 5 of 43 (11.6%) of genes in pham
- Manual Annotations of this start: 3 of 35
- Called 100.0% of time when present
- Phage (with cluster) where this start called: Camara_26 (AS3), KHumphrey_26 (AS3), Leona_25 (AS3), PhluffyCoco_26 (AS3), RedFox_26 (AS3),

Summary by clusters:

There are 7 clusters represented in this pham: AS3, AS1, DE3, singleton, AR, CP, FO,

Info for manual annotations of cluster AR:

- Start number 19 was manually annotated 19 times for cluster AR.

Info for manual annotations of cluster AS1:

- Start number 20 was manually annotated 1 time for cluster AS1.

Info for manual annotations of cluster AS3:

- Start number 21 was manually annotated 3 times for cluster AS3.

Info for manual annotations of cluster CP:

- Start number 18 was manually annotated 3 times for cluster CP.

Info for manual annotations of cluster DE3:

- Start number 12 was manually annotated 7 times for cluster DE3.

Info for manual annotations of cluster FO:

- Start number 19 was manually annotated 1 time for cluster FO.

Gene Information:

Gene: Camara_26 Start: 18733, Stop: 18518, Start Num: 21

Candidate Starts for Camara_26:

(Start: 21 @18733 has 3 MA's),

Gene: Chickaboom_25 Start: 18878, Stop: 18663, Start Num: 20

Candidate Starts for Chickaboom_25:

(Start: 20 @18878 has 1 MA's),

Gene: Chickadee_87 Start: 56050, Stop: 56301, Start Num: 12

Candidate Starts for Chickadee_87:

(Start: 12 @56050 has 7 MA's), (16, 56089), (22, 56113), (30, 56173), (41, 56248),

Gene: Chipper1996_370 Start: 30385, Stop: 30167, Start Num: 19

Candidate Starts for Chipper1996_370:

(4, 30535), (6, 30490), (7, 30487), (9, 30448), (14, 30415), (Start: 19 @30385 has 20 MA's), (23, 30364), (26, 30328), (28, 30313), (31, 30298), (33, 30286),

Gene: Chocolat_37 Start: 30385, Stop: 30167, Start Num: 19

Candidate Starts for Chocolat_37:

(4, 30535), (6, 30490), (7, 30487), (9, 30448), (14, 30415), (Start: 19 @30385 has 20 MA's), (23, 30364), (26, 30328), (28, 30313), (31, 30298), (33, 30286),

Gene: Chubster_37 Start: 30157, Stop: 29939, Start Num: 19

Candidate Starts for Chubster_37:

(4, 30307), (6, 30262), (7, 30259), (9, 30220), (14, 30187), (Start: 19 @30157 has 20 MA's), (23, 30136), (26, 30100), (28, 30085), (31, 30070), (33, 30058),

Gene: Clawz_72 Start: 48155, Stop: 48379, Start Num: 18

Candidate Starts for Clawz_72:

(11, 48107), (Start: 18 @48155 has 3 MA's), (28, 48227), (29, 48233), (32, 48251), (33, 48254), (35, 48269), (38, 48293), (43, 48371),

Gene: ColdSoup_73 Start: 48358, Stop: 48582, Start Num: 18

Candidate Starts for ColdSoup_73:

(Start: 18 @48358 has 3 MA's), (28, 48430), (29, 48436), (35, 48472), (38, 48496), (39, 48505), (43, 48574),

Gene: Colucci_37 Start: 29963, Stop: 29742, Start Num: 19

Candidate Starts for Colucci_37:

(1, 30272), (2, 30215), (3, 30194), (9, 30026), (10, 30020), (15, 29981), (Start: 19 @29963 has 20 MA's), (28, 29891), (31, 29876), (33, 29864), (37, 29843),

Gene: Conboy_37 Start: 30384, Stop: 30166, Start Num: 19

Candidate Starts for Conboy_37:

(4, 30534), (6, 30489), (7, 30486), (9, 30447), (14, 30414), (Start: 19 @30384 has 20 MA's), (23, 30363), (26, 30327), (28, 30312), (31, 30297), (33, 30285),

Gene: Dxdert_82 Start: 54559, Stop: 54810, Start Num: 12

Candidate Starts for Dxdert_82:

(Start: 12 @54559 has 7 MA's), (16, 54598), (22, 54622), (30, 54682), (41, 54757),

Gene: DonTron_72 Start: 48395, Stop: 48619, Start Num: 18

Candidate Starts for DonTron_72:

(Start: 18 @48395 has 3 MA's), (28, 48467), (29, 48473), (35, 48509), (38, 48533), (39, 48542), (43, 48611),

Gene: DrYang_38 Start: 31723, Stop: 31505, Start Num: 19

Candidate Starts for DrYang_38:

(Start: 19 @31723 has 20 MA's), (25, 31675), (26, 31666), (28, 31651), (31, 31636), (33, 31624), (42, 31549),

Gene: EdgarPoe_37 Start: 30384, Stop: 30166, Start Num: 19

Candidate Starts for EdgarPoe_37:

(4, 30534), (6, 30489), (7, 30486), (9, 30447), (14, 30414), (Start: 19 @30384 has 20 MA's), (23, 30363), (26, 30327), (28, 30312), (31, 30297), (33, 30285),

Gene: EdmundFerry_85 Start: 55426, Stop: 55677, Start Num: 12

Candidate Starts for EdmundFerry_85:

(Start: 12 @55426 has 7 MA's), (16, 55465), (22, 55489), (30, 55549), (41, 55624),

Gene: GTE6_86 Start: 56599, Stop: 56850, Start Num: 12

Candidate Starts for GTE6_86:

(Start: 12 @56599 has 7 MA's), (16, 56638), (22, 56662), (30, 56722), (41, 56797),

Gene: HumptyDumpty_37 Start: 30383, Stop: 30165, Start Num: 19

Candidate Starts for HumptyDumpty_37:

(4, 30533), (6, 30488), (7, 30485), (9, 30446), (14, 30413), (Start: 19 @30383 has 20 MA's), (23, 30362), (26, 30326), (28, 30311), (31, 30296), (33, 30284),

Gene: JaNo_37 Start: 30383, Stop: 30165, Start Num: 19
Candidate Starts for JaNo_37:
(4, 30533), (6, 30488), (7, 30485), (9, 30446), (14, 30413), (Start: 19 @30383 has 20 MA's), (23, 30362), (26, 30326), (28, 30311), (31, 30296), (33, 30284),

Gene: JanetJ_27 Start: 24007, Stop: 23804, Start Num: 19
Candidate Starts for JanetJ_27:
(Start: 19 @24007 has 20 MA's),

Gene: JayCookie_37 Start: 30387, Stop: 30169, Start Num: 19
Candidate Starts for JayCookie_37:
(4, 30537), (6, 30492), (7, 30489), (9, 30450), (14, 30417), (Start: 19 @30387 has 20 MA's), (23, 30366), (26, 30330), (28, 30315), (31, 30300), (33, 30288),

Gene: Jollymon_73 Start: 48358, Stop: 48582, Start Num: 18
Candidate Starts for Jollymon_73:
(Start: 18 @48358 has 3 MA's), (28, 48430), (29, 48436), (35, 48472), (38, 48496), (39, 48505), (43, 48574),

Gene: KBurrousTX_37 Start: 31486, Stop: 31268, Start Num: 19
Candidate Starts for KBurrousTX_37:
(14, 31513), (Start: 19 @31486 has 20 MA's), (24, 31462), (26, 31429), (28, 31414), (31, 31399), (33, 31387), (34, 31381),

Gene: KHumphrey_26 Start: 18730, Stop: 18515, Start Num: 21
Candidate Starts for KHumphrey_26:
(Start: 21 @18730 has 3 MA's),

Gene: Kabreeze_37 Start: 30383, Stop: 30165, Start Num: 19
Candidate Starts for Kabreeze_37:
(4, 30533), (6, 30488), (7, 30485), (9, 30446), (14, 30413), (Start: 19 @30383 has 20 MA's), (23, 30362), (26, 30326), (28, 30311), (31, 30296), (33, 30284),

Gene: KingstonB_73 Start: 47833, Stop: 48057, Start Num: 18
Candidate Starts for KingstonB_73:
(Start: 18 @47833 has 3 MA's), (28, 47905), (29, 47911), (35, 47947), (38, 47971), (39, 47980), (43, 48049),

Gene: Kwekel_87 Start: 55963, Stop: 56214, Start Num: 12
Candidate Starts for Kwekel_87:
(Start: 12 @55963 has 7 MA's), (16, 56002), (22, 56026), (30, 56086), (41, 56161),

Gene: Leona_25 Start: 18655, Stop: 18440, Start Num: 21
Candidate Starts for Leona_25:
(5, 18790), (8, 18736), (17, 18667), (Start: 21 @18655 has 3 MA's),

Gene: Linus_37 Start: 30384, Stop: 30166, Start Num: 19
Candidate Starts for Linus_37:
(4, 30534), (6, 30489), (7, 30486), (9, 30447), (14, 30414), (Start: 19 @30384 has 20 MA's), (23, 30363), (26, 30327), (28, 30312), (31, 30297), (33, 30285),

Gene: Lymara_37 Start: 30202, Stop: 29981, Start Num: 19
Candidate Starts for Lymara_37:

(4, 30352), (6, 30307), (9, 30265), (14, 30232), (Start: 19 @30202 has 20 MA's), (25, 30154), (28, 30130), (31, 30115), (33, 30103),

Gene: Mordred_37 Start: 30383, Stop: 30165, Start Num: 19

Candidate Starts for Mordred_37:

(4, 30533), (6, 30488), (7, 30485), (9, 30446), (14, 30413), (Start: 19 @30383 has 20 MA's), (23, 30362), (26, 30326), (28, 30311), (31, 30296), (33, 30284),

Gene: MoyaNatalis_37 Start: 30387, Stop: 30169, Start Num: 19

Candidate Starts for MoyaNatalis_37:

(4, 30537), (6, 30492), (7, 30489), (9, 30450), (14, 30417), (Start: 19 @30387 has 20 MA's), (23, 30366), (26, 30330), (28, 30315), (31, 30300), (33, 30288),

Gene: PhluffyCoco_26 Start: 18717, Stop: 18502, Start Num: 21

Candidate Starts for PhluffyCoco_26:

(Start: 21 @18717 has 3 MA's),

Gene: PrincessTrina_37 Start: 30387, Stop: 30169, Start Num: 19

Candidate Starts for PrincessTrina_37:

(4, 30537), (6, 30492), (7, 30489), (9, 30450), (14, 30417), (Start: 19 @30387 has 20 MA's), (23, 30366), (26, 30330), (28, 30315), (31, 30300), (33, 30288),

Gene: RedFox_26 Start: 18732, Stop: 18517, Start Num: 21

Candidate Starts for RedFox_26:

(Start: 21 @18732 has 3 MA's),

Gene: RoadKill_84 Start: 55492, Stop: 55743, Start Num: 12

Candidate Starts for RoadKill_84:

(Start: 12 @55492 has 7 MA's), (16, 55531), (22, 55555), (30, 55615), (41, 55690),

Gene: RosiePosie_37 Start: 30386, Stop: 30168, Start Num: 19

Candidate Starts for RosiePosie_37:

(4, 30536), (6, 30491), (7, 30488), (9, 30449), (14, 30416), (Start: 19 @30386 has 20 MA's), (23, 30365), (26, 30329), (28, 30314), (31, 30299), (33, 30287),

Gene: Scavito_37 Start: 30384, Stop: 30166, Start Num: 19

Candidate Starts for Scavito_37:

(4, 30534), (6, 30489), (7, 30486), (9, 30447), (14, 30414), (Start: 19 @30384 has 20 MA's), (23, 30363), (26, 30327), (28, 30312), (31, 30297), (33, 30285),

Gene: Soos_68 Start: 47562, Stop: 47786, Start Num: 18

Candidate Starts for Soos_68:

(Start: 18 @47562 has 3 MA's), (28, 47634), (29, 47640), (35, 47676), (38, 47700), (39, 47709), (43, 47778),

Gene: Sting_71 Start: 48001, Stop: 48225, Start Num: 18

Candidate Starts for Sting_71:

(Start: 18 @48001 has 3 MA's), (27, 48064), (28, 48073), (29, 48079), (35, 48115), (38, 48139), (39, 48148), (43, 48217),

Gene: Tiamoceli_80 Start: 55382, Stop: 55633, Start Num: 12

Candidate Starts for Tiamoceli_80:

(Start: 12 @55382 has 7 MA's), (16, 55421), (22, 55445), (30, 55505), (41, 55580),

Gene: Tonitrus_59 Start: 44270, Stop: 44503, Start Num: 13

Candidate Starts for Tonitrus_59:

(Start: 13 @44270 has 1 MA's), (26, 44363), (27, 44369), (36, 44423), (40, 44465),

Gene: Tophat_37 Start: 30385, Stop: 30167, Start Num: 19

Candidate Starts for Tophat_37:

(4, 30535), (6, 30490), (7, 30487), (9, 30448), (14, 30415), (Start: 19 @30385 has 20 MA's), (23, 30364), (26, 30328), (28, 30313), (31, 30298), (33, 30286),

Gene: Twonlo_84 Start: 56083, Stop: 56334, Start Num: 12

Candidate Starts for Twonlo_84:

(Start: 12 @56083 has 7 MA's), (16, 56122), (22, 56146), (30, 56206), (41, 56281),