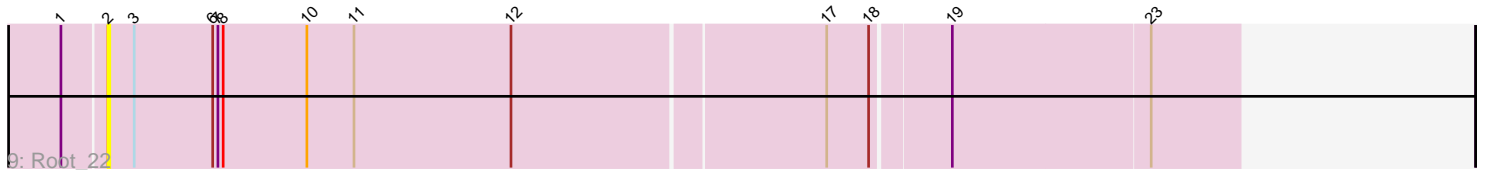
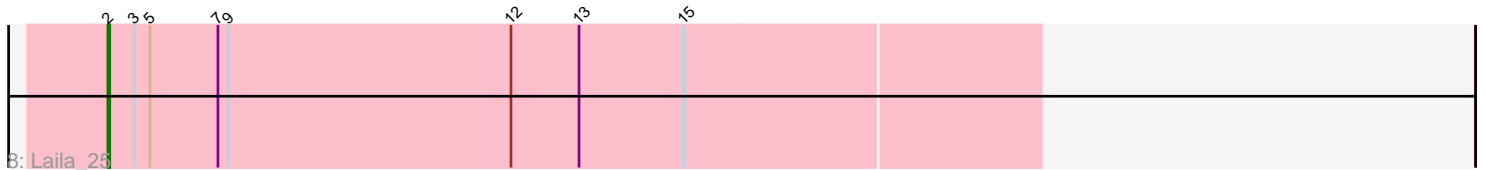
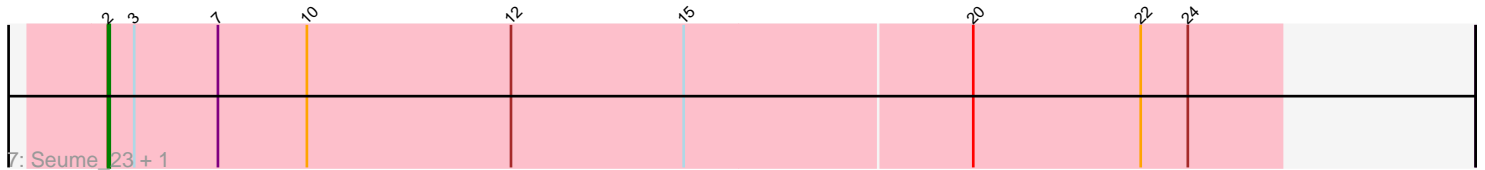
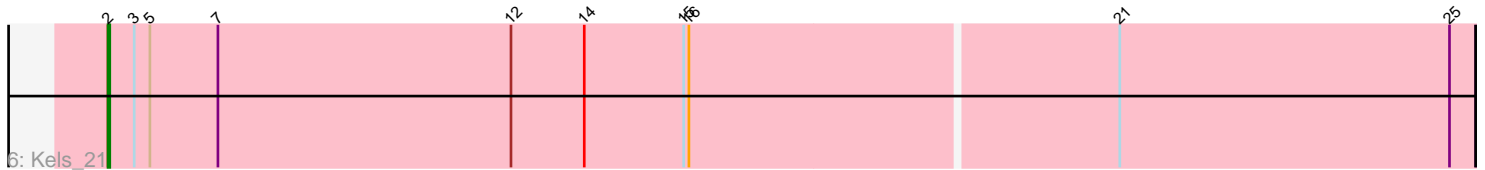
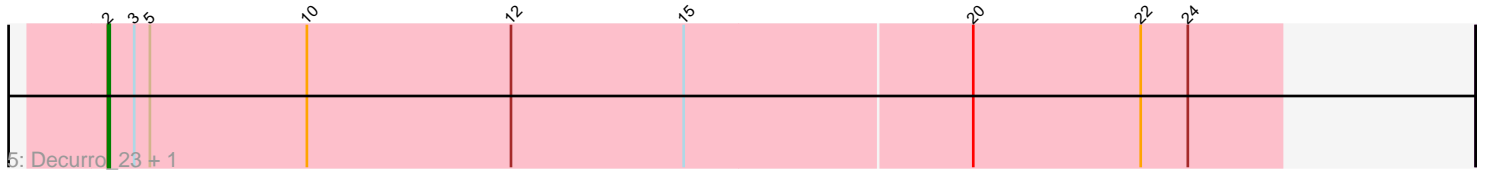
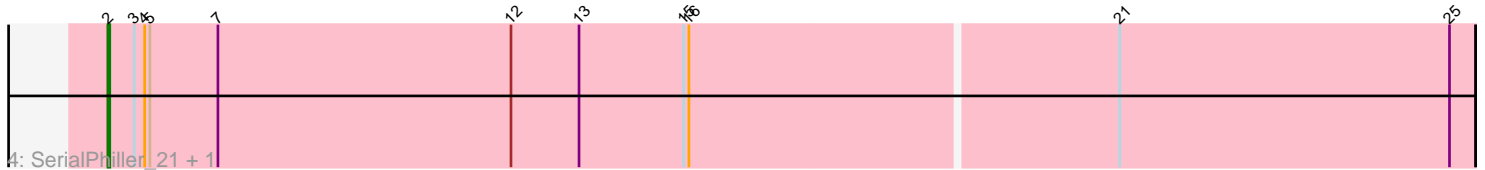
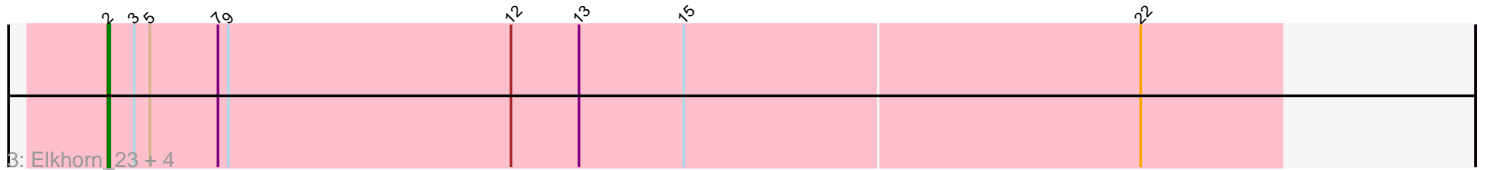
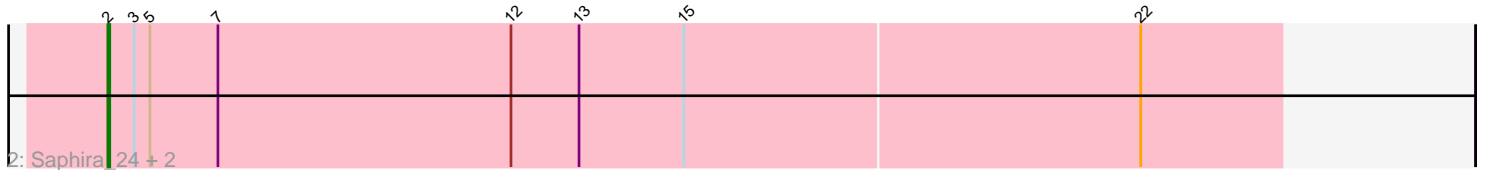
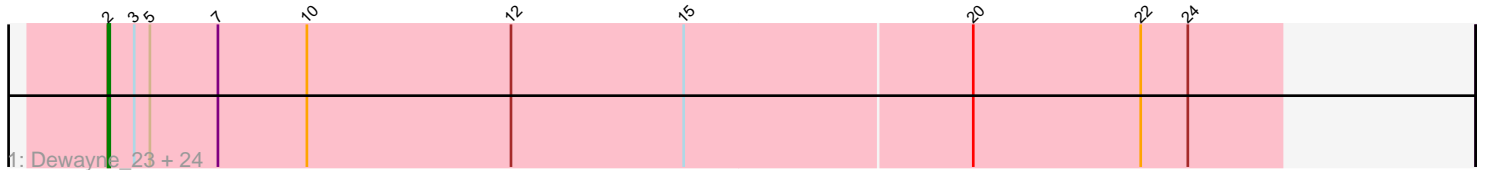


Pham 196653



Note: Tracks are now grouped by subcluster and scaled. Switching in subcluster is indicated by changes in track color. Track scale is now set by default to display the region 30 bp upstream of start 1 to 30 bp downstream of the last possible start. If this default region is judged to be packed too tightly with annotated starts, the track will be further scaled to only show that region of the ORF with annotated starts. This action will be indicated by adding "Zoomed" to the title. For starts, yellow indicates the location of called starts comprised solely of Glimmer/GeneMark auto-annotations, green indicates the location of called starts with at least 1 manual gene annotation.

Pham 196653 Report

This analysis was run 12/09/24 on database version 580.

Pham number 196653 has 42 members, 1 are drafts.

Phages represented in each track:

- Track 1 : Dewayne_23, Sandman_23, Hunnie_23, Ronnie_23, LouisXIV_23, Inspire2_23, Moloch_23, CGermain_23, Azathoth_23, Courtney3_23, Muttie_23, Arby_23, TinoCrisci_23, Prospero_23, Stratus_23, TymAbreu_23, Massimo_23, Jessica_24, Mariposa_23, Guntur_23, Maggie_23, Copper_23, Chestnut_23, Link_23, Sourignavong_24
- Track 2 : Saphira_24, Taj14_23, Swenson_23
- Track 3 : Elkhorn_23, StewieGriff_23, Lore_23, Blair_23, KylieMac_24
- Track 4 : SerialPhiller_21, Arielagos_21
- Track 5 : Decurro_23, Yank_23
- Track 6 : Kels_21
- Track 7 : Seume_23, Toulouse_22
- Track 8 : Laila_25
- Track 9 : Root_22

Summary of Final Annotations (See graph section above for start numbers):

The start number called the most often in the published annotations is 2, it was called in 41 of the 41 non-draft genes in the pham.

Genes that call this "Most Annotated" start:

- Arby_23, Arielagos_21, Azathoth_23, Blair_23, CGermain_23, Chestnut_23, Copper_23, Courtney3_23, Decurro_23, Dewayne_23, Elkhorn_23, Guntur_23, Hunnie_23, Inspire2_23, Jessica_24, Kels_21, KylieMac_24, Laila_25, Link_23, Lore_23, LouisXIV_23, Maggie_23, Mariposa_23, Massimo_23, Moloch_23, Muttie_23, Prospero_23, Ronnie_23, Root_22, Sandman_23, Saphira_24, SerialPhiller_21, Seume_23, Sourignavong_24, StewieGriff_23, Stratus_23, Swenson_23, Taj14_23, TinoCrisci_23, Toulouse_22, TymAbreu_23, Yank_23,

Genes that have the "Most Annotated" start but do not call it:

-

Genes that do not have the "Most Annotated" start:

-

Summary by start number:

Start 2:

- Found in 42 of 42 (100.0%) of genes in pham
- Manual Annotations of this start: 41 of 41
- Called 100.0% of time when present
- Phage (with cluster) where this start called: Arby_23 (AN), Arielagos_21 (AN), Azathoth_23 (AN), Blair_23 (AN), CGermain_23 (AN), Chestnut_23 (AN), Copper_23 (AN), Courtney3_23 (AN), Decurro_23 (AN), Dewayne_23 (AN), Elkhorn_23 (AN), Guntur_23 (AN), Hunnie_23 (AN), Inspire2_23 (AN), Jessica_24 (AN), Kels_21 (AN), KylieMac_24 (AN), Laila_25 (AN), Link_23 (AN), Lore_23 (AN), LouisXIV_23 (AN), Maggie_23 (AN), Mariposa_23 (AN), Massimo_23 (AN), Moloch_23 (AN), Muttie_23 (AN), Prospero_23 (AN), Ronnie_23 (AN), Root_22 (singleton), Sandman_23 (AN), Saphira_24 (AN), SerialPhiller_21 (AN), Seume_23 (AN), Sourignavong_24 (AN), StewieGriff_23 (AN), Stratus_23 (AN), Swenson_23 (AN), Taj14_23 (AN), TinoCrisci_23 (AN), Toulouse_22 (AN), TymAbreu_23 (AN), Yank_23 (AN),

Summary by clusters:

There are 2 clusters represented in this pham: singleton, AN,

Info for manual annotations of cluster AN:

- Start number 2 was manually annotated 41 times for cluster AN.

Gene Information:

Gene: Arby_23 Start: 14116, Stop: 14784, Start Num: 2

Candidate Starts for Arby_23:

(Start: 2 @14116 has 41 MA's), (3, 14131), (5, 14140), (7, 14179), (10, 14230), (12, 14347), (15, 14446), (20, 14608), (22, 14704), (24, 14731),

Gene: Arielagos_21 Start: 13877, Stop: 14653, Start Num: 2

Candidate Starts for Arielagos_21:

(Start: 2 @13877 has 41 MA's), (3, 13892), (4, 13898), (5, 13901), (7, 13940), (12, 14108), (13, 14147), (15, 14207), (16, 14210), (21, 14450), (25, 14639),

Gene: Azathoth_23 Start: 14116, Stop: 14784, Start Num: 2

Candidate Starts for Azathoth_23:

(Start: 2 @14116 has 41 MA's), (3, 14131), (5, 14140), (7, 14179), (10, 14230), (12, 14347), (15, 14446), (20, 14608), (22, 14704), (24, 14731),

Gene: Blair_23 Start: 14113, Stop: 14781, Start Num: 2

Candidate Starts for Blair_23:

(Start: 2 @14113 has 41 MA's), (3, 14128), (5, 14137), (7, 14176), (9, 14182), (12, 14344), (13, 14383), (15, 14443), (22, 14701),

Gene: CGermain_23 Start: 14116, Stop: 14784, Start Num: 2

Candidate Starts for CGermain_23:

(Start: 2 @14116 has 41 MA's), (3, 14131), (5, 14140), (7, 14179), (10, 14230), (12, 14347), (15, 14446), (20, 14608), (22, 14704), (24, 14731),

Gene: Chestnut_23 Start: 14116, Stop: 14784, Start Num: 2

Candidate Starts for Chestnut_23:

(Start: 2 @14116 has 41 MA's), (3, 14131), (5, 14140), (7, 14179), (10, 14230), (12, 14347), (15, 14446), (20, 14608), (22, 14704), (24, 14731),

Gene: Copper_23 Start: 14116, Stop: 14784, Start Num: 2

Candidate Starts for Copper_23:

(Start: 2 @14116 has 41 MA's), (3, 14131), (5, 14140), (7, 14179), (10, 14230), (12, 14347), (15, 14446), (20, 14608), (22, 14704), (24, 14731),

Gene: Courtney3_23 Start: 14116, Stop: 14784, Start Num: 2

Candidate Starts for Courtney3_23:

(Start: 2 @14116 has 41 MA's), (3, 14131), (5, 14140), (7, 14179), (10, 14230), (12, 14347), (15, 14446), (20, 14608), (22, 14704), (24, 14731),

Gene: Decurro_23 Start: 14084, Stop: 14752, Start Num: 2

Candidate Starts for Decurro_23:

(Start: 2 @14084 has 41 MA's), (3, 14099), (5, 14108), (10, 14198), (12, 14315), (15, 14414), (20, 14576), (22, 14672), (24, 14699),

Gene: Dewayne_23 Start: 14116, Stop: 14784, Start Num: 2

Candidate Starts for Dewayne_23:

(Start: 2 @14116 has 41 MA's), (3, 14131), (5, 14140), (7, 14179), (10, 14230), (12, 14347), (15, 14446), (20, 14608), (22, 14704), (24, 14731),

Gene: Elkhorn_23 Start: 14113, Stop: 14781, Start Num: 2

Candidate Starts for Elkhorn_23:

(Start: 2 @14113 has 41 MA's), (3, 14128), (5, 14137), (7, 14176), (9, 14182), (12, 14344), (13, 14383), (15, 14443), (22, 14701),

Gene: Guntur_23 Start: 14116, Stop: 14784, Start Num: 2

Candidate Starts for Guntur_23:

(Start: 2 @14116 has 41 MA's), (3, 14131), (5, 14140), (7, 14179), (10, 14230), (12, 14347), (15, 14446), (20, 14608), (22, 14704), (24, 14731),

Gene: Hunnie_23 Start: 14116, Stop: 14784, Start Num: 2

Candidate Starts for Hunnie_23:

(Start: 2 @14116 has 41 MA's), (3, 14131), (5, 14140), (7, 14179), (10, 14230), (12, 14347), (15, 14446), (20, 14608), (22, 14704), (24, 14731),

Gene: Inspire2_23 Start: 14116, Stop: 14784, Start Num: 2

Candidate Starts for Inspire2_23:

(Start: 2 @14116 has 41 MA's), (3, 14131), (5, 14140), (7, 14179), (10, 14230), (12, 14347), (15, 14446), (20, 14608), (22, 14704), (24, 14731),

Gene: Jessica_24 Start: 14116, Stop: 14784, Start Num: 2

Candidate Starts for Jessica_24:

(Start: 2 @14116 has 41 MA's), (3, 14131), (5, 14140), (7, 14179), (10, 14230), (12, 14347), (15, 14446), (20, 14608), (22, 14704), (24, 14731),

Gene: Kels_21 Start: 13437, Stop: 14213, Start Num: 2

Candidate Starts for Kels_21:

(Start: 2 @13437 has 41 MA's), (3, 13452), (5, 13461), (7, 13500), (12, 13668), (14, 13710), (15, 13767), (16, 13770), (21, 14010), (25, 14199),

Gene: KylieMac_24 Start: 14100, Stop: 14768, Start Num: 2

Candidate Starts for KylieMac_24:

(Start: 2 @14100 has 41 MA's), (3, 14115), (5, 14124), (7, 14163), (9, 14169), (12, 14331), (13, 14370), (15, 14430), (22, 14688),

Gene: Laila_25 Start: 14113, Stop: 14643, Start Num: 2

Candidate Starts for Laila_25:

(Start: 2 @14113 has 41 MA's), (3, 14128), (5, 14137), (7, 14176), (9, 14182), (12, 14344), (13, 14383), (15, 14443),

Gene: Link_23 Start: 14081, Stop: 14749, Start Num: 2

Candidate Starts for Link_23:

(Start: 2 @14081 has 41 MA's), (3, 14096), (5, 14105), (7, 14144), (10, 14195), (12, 14312), (15, 14411), (20, 14573), (22, 14669), (24, 14696),

Gene: Lore_23 Start: 14113, Stop: 14781, Start Num: 2

Candidate Starts for Lore_23:

(Start: 2 @14113 has 41 MA's), (3, 14128), (5, 14137), (7, 14176), (9, 14182), (12, 14344), (13, 14383), (15, 14443), (22, 14701),

Gene: LouisXIV_23 Start: 14116, Stop: 14784, Start Num: 2

Candidate Starts for LouisXIV_23:

(Start: 2 @14116 has 41 MA's), (3, 14131), (5, 14140), (7, 14179), (10, 14230), (12, 14347), (15, 14446), (20, 14608), (22, 14704), (24, 14731),

Gene: Maggie_23 Start: 14116, Stop: 14784, Start Num: 2

Candidate Starts for Maggie_23:

(Start: 2 @14116 has 41 MA's), (3, 14131), (5, 14140), (7, 14179), (10, 14230), (12, 14347), (15, 14446), (20, 14608), (22, 14704), (24, 14731),

Gene: Mariposa_23 Start: 14116, Stop: 14784, Start Num: 2

Candidate Starts for Mariposa_23:

(Start: 2 @14116 has 41 MA's), (3, 14131), (5, 14140), (7, 14179), (10, 14230), (12, 14347), (15, 14446), (20, 14608), (22, 14704), (24, 14731),

Gene: Massimo_23 Start: 14116, Stop: 14784, Start Num: 2

Candidate Starts for Massimo_23:

(Start: 2 @14116 has 41 MA's), (3, 14131), (5, 14140), (7, 14179), (10, 14230), (12, 14347), (15, 14446), (20, 14608), (22, 14704), (24, 14731),

Gene: Moloch_23 Start: 14190, Stop: 14858, Start Num: 2

Candidate Starts for Moloch_23:

(Start: 2 @14190 has 41 MA's), (3, 14205), (5, 14214), (7, 14253), (10, 14304), (12, 14421), (15, 14520), (20, 14682), (22, 14778), (24, 14805),

Gene: Muttie_23 Start: 14084, Stop: 14752, Start Num: 2

Candidate Starts for Muttie_23:

(Start: 2 @14084 has 41 MA's), (3, 14099), (5, 14108), (7, 14147), (10, 14198), (12, 14315), (15, 14414), (20, 14576), (22, 14672), (24, 14699),

Gene: Prospero_23 Start: 14116, Stop: 14784, Start Num: 2

Candidate Starts for Prospero_23:

(Start: 2 @14116 has 41 MA's), (3, 14131), (5, 14140), (7, 14179), (10, 14230), (12, 14347), (15, 14446), (20, 14608), (22, 14704), (24, 14731),

Gene: Ronnie_23 Start: 14116, Stop: 14784, Start Num: 2

Candidate Starts for Ronnie_23:

(Start: 2 @14116 has 41 MA's), (3, 14131), (5, 14140), (7, 14179), (10, 14230), (12, 14347), (15, 14446), (20, 14608), (22, 14704), (24, 14731),

Gene: Root_22 Start: 13926, Stop: 14558, Start Num: 2

Candidate Starts for Root_22:

(1, 13902), (Start: 2 @13926 has 41 MA's), (3, 13941), (6, 13986), (7, 13989), (8, 13992), (10, 14040), (11, 14067), (12, 14157), (17, 14331), (18, 14355), (19, 14397), (23, 14508),

Gene: Sandman_23 Start: 14190, Stop: 14858, Start Num: 2

Candidate Starts for Sandman_23:

(Start: 2 @14190 has 41 MA's), (3, 14205), (5, 14214), (7, 14253), (10, 14304), (12, 14421), (15, 14520), (20, 14682), (22, 14778), (24, 14805),

Gene: Saphira_24 Start: 14115, Stop: 14783, Start Num: 2

Candidate Starts for Saphira_24:

(Start: 2 @14115 has 41 MA's), (3, 14130), (5, 14139), (7, 14178), (12, 14346), (13, 14385), (15, 14445), (22, 14703),

Gene: SerialPhiller_21 Start: 13877, Stop: 14653, Start Num: 2

Candidate Starts for SerialPhiller_21:

(Start: 2 @13877 has 41 MA's), (3, 13892), (4, 13898), (5, 13901), (7, 13940), (12, 14108), (13, 14147), (15, 14207), (16, 14210), (21, 14450), (25, 14639),

Gene: Seume_23 Start: 13879, Stop: 14547, Start Num: 2

Candidate Starts for Seume_23:

(Start: 2 @13879 has 41 MA's), (3, 13894), (7, 13942), (10, 13993), (12, 14110), (15, 14209), (20, 14371), (22, 14467), (24, 14494),

Gene: Sourignavong_24 Start: 14185, Stop: 14853, Start Num: 2

Candidate Starts for Sourignavong_24:

(Start: 2 @14185 has 41 MA's), (3, 14200), (5, 14209), (7, 14248), (10, 14299), (12, 14416), (15, 14515), (20, 14677), (22, 14773), (24, 14800),

Gene: StewieGriff_23 Start: 14113, Stop: 14781, Start Num: 2

Candidate Starts for StewieGriff_23:

(Start: 2 @14113 has 41 MA's), (3, 14128), (5, 14137), (7, 14176), (9, 14182), (12, 14344), (13, 14383), (15, 14443), (22, 14701),

Gene: Stratus_23 Start: 14190, Stop: 14858, Start Num: 2

Candidate Starts for Stratus_23:

(Start: 2 @14190 has 41 MA's), (3, 14205), (5, 14214), (7, 14253), (10, 14304), (12, 14421), (15, 14520), (20, 14682), (22, 14778), (24, 14805),

Gene: Swenson_23 Start: 14237, Stop: 14905, Start Num: 2

Candidate Starts for Swenson_23:

(Start: 2 @14237 has 41 MA's), (3, 14252), (5, 14261), (7, 14300), (12, 14468), (13, 14507), (15, 14567), (22, 14825),

Gene: Taj14_23 Start: 14112, Stop: 14780, Start Num: 2

Candidate Starts for Taj14_23:

(Start: 2 @14112 has 41 MA's), (3, 14127), (5, 14136), (7, 14175), (12, 14343), (13, 14382), (15, 14442), (22, 14700),

Gene: TinoCrisci_23 Start: 14116, Stop: 14784, Start Num: 2

Candidate Starts for TinoCrisci_23:

(Start: 2 @14116 has 41 MA's), (3, 14131), (5, 14140), (7, 14179), (10, 14230), (12, 14347), (15, 14446), (20, 14608), (22, 14704), (24, 14731),

Gene: Toulouse_22 Start: 13879, Stop: 14547, Start Num: 2

Candidate Starts for Toulouse_22:

(Start: 2 @13879 has 41 MA's), (3, 13894), (7, 13942), (10, 13993), (12, 14110), (15, 14209), (20, 14371), (22, 14467), (24, 14494),

Gene: TymAbreu_23 Start: 14116, Stop: 14784, Start Num: 2

Candidate Starts for TymAbreu_23:

(Start: 2 @14116 has 41 MA's), (3, 14131), (5, 14140), (7, 14179), (10, 14230), (12, 14347), (15, 14446), (20, 14608), (22, 14704), (24, 14731),

Gene: Yank_23 Start: 14084, Stop: 14752, Start Num: 2

Candidate Starts for Yank_23:

(Start: 2 @14084 has 41 MA's), (3, 14099), (5, 14108), (10, 14198), (12, 14315), (15, 14414), (20, 14576), (22, 14672), (24, 14699),