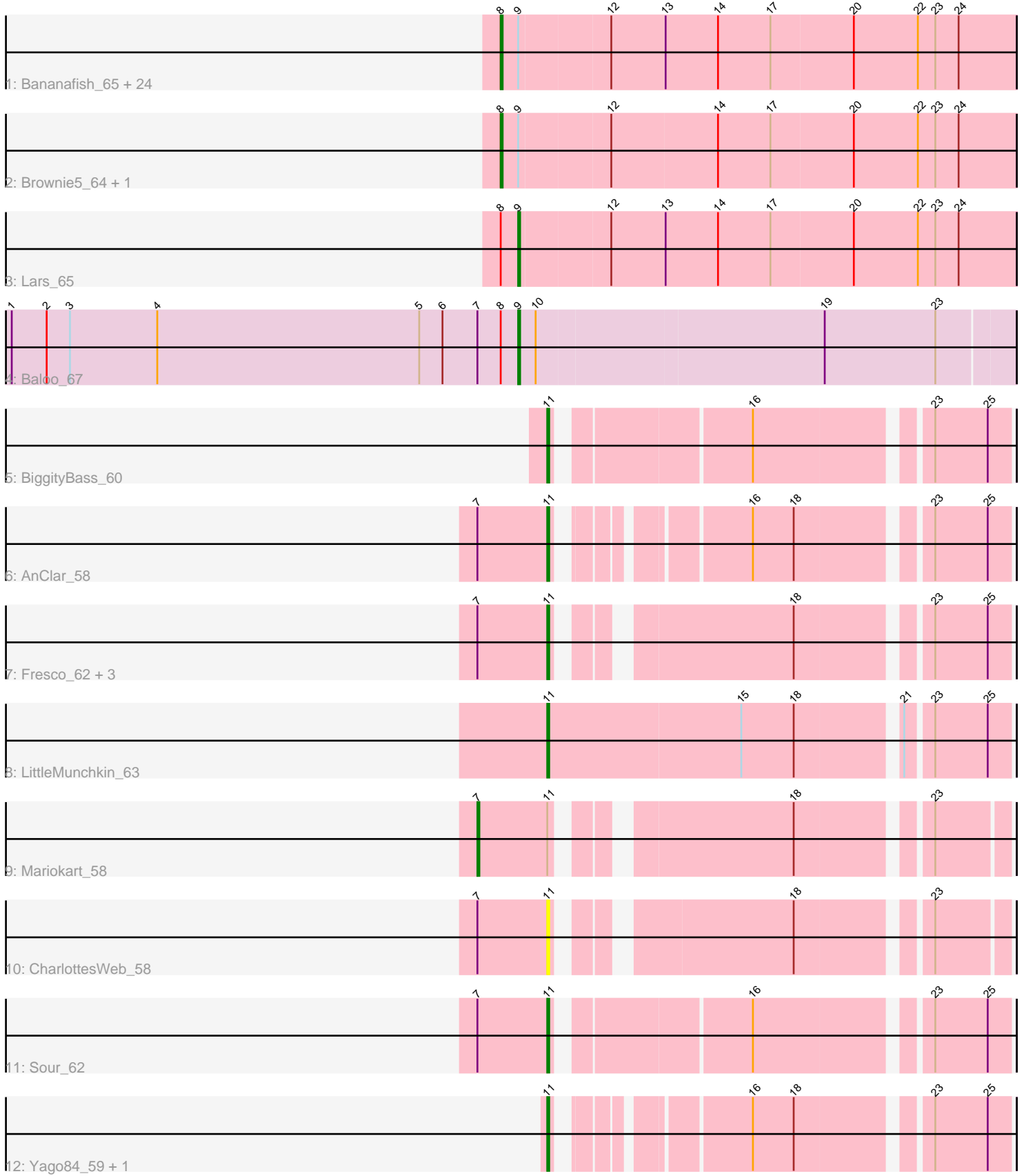


Pham 196661



Note: Tracks are now grouped by subcluster and scaled. Switching in subcluster is indicated by changes in track color. Track scale is now set by default to display the region 30 bp upstream of start 1 to 30 bp downstream of the last possible start. If this default region is judged to be packed too tightly with annotated starts, the track will be further scaled to only show that region of the ORF with annotated starts. This action will be indicated by adding "Zoomed" to the title. For starts, yellow indicates the location of called starts comprised solely of Glimmer/GeneMark auto-annotations, green indicates the location of called starts with at least 1 manual gene annotation.

Pham 196661 Report

This analysis was run 12/09/24 on database version 580.

Pham number 196661 has 41 members, 1 are drafts.

Phages represented in each track:

- Track 1 : Bananafish_65, Calamitous_65, Eaglehorse_64, Qyrzula_58, Boyle_64, West99_64, LizLemon_64, Arbiter_62, Kheth_64, Rhinoforte_64, Sabella_64, MasterPo_65, Laurie_64, Tres_64, Rosebush_63, Godines_65, Ares_64, Lephleur_64, Opia_65, ItsyBitsy1_63, Glass_65, FrenchFry_65, Holeinone_64, Hedgerow_64, Blocker23_64
- Track 2 : Brownie5_64, Tinciduntolum_65
- Track 3 : Lars_65
- Track 4 : Baloo_67
- Track 5 : BiggityBass_60
- Track 6 : AnClar_58
- Track 7 : Fresco_62, Axumite_62, Shatter_62, Ligma_62
- Track 8 : LittleMunchkin_63
- Track 9 : Mariokart_58
- Track 10 : CharlottesWeb_58
- Track 11 : Sour_62
- Track 12 : Yago84_59, Sisko_60

Summary of Final Annotations (See graph section above for start numbers):

The start number called the most often in the published annotations is 8, it was called in 27 of the 40 non-draft genes in the pham.

Genes that call this "Most Annotated" start:

- Arbiter_62, Ares_64, Bananafish_65, Blocker23_64, Boyle_64, Brownie5_64, Calamitous_65, Eaglehorse_64, FrenchFry_65, Glass_65, Godines_65, Hedgerow_64, Holeinone_64, ItsyBitsy1_63, Kheth_64, Laurie_64, Lephleur_64, LizLemon_64, MasterPo_65, Opia_65, Qyrzula_58, Rhinoforte_64, Rosebush_63, Sabella_64, Tinciduntolum_65, Tres_64, West99_64,

Genes that have the "Most Annotated" start but do not call it:

- Baloo_67, Lars_65,

Genes that do not have the "Most Annotated" start:

- AnClar_58, Axumite_62, BiggityBass_60, CharlottesWeb_58, Fresco_62, Ligma_62, LittleMunchkin_63, Mariokart_58, Shatter_62, Sisko_60, Sour_62, Yago84_59,

Summary by start number:

Start 7:

- Found in 9 of 41 (22.0%) of genes in pham
- Manual Annotations of this start: 1 of 40
- Called 11.1% of time when present
- Phage (with cluster) where this start called: Mariokart_58 (DR),

Start 8:

- Found in 29 of 41 (70.7%) of genes in pham
- Manual Annotations of this start: 27 of 40
- Called 93.1% of time when present
- Phage (with cluster) where this start called: Arbiter_62 (B2), Ares_64 (B2), Bananafish_65 (B2), Blocker23_64 (B2), Boyle_64 (B2), Brownie5_64 (B2), Calamitous_65 (B2), Eaglehorse_64 (B2), FrenchFry_65 (B2), Glass_65 (B2), Godines_65 (B2), Hedgerow_64 (B2), Holeinone_64 (B2), ItsyBitsy1_63 (B2), Kheth_64 (B2), Laurie_64 (B2), Lephleur_64 (B2), LizLemon_64 (B2), MasterPo_65 (B2), Opia_65 (B2), Qyrzula_58 (B2), Rhinoforte_64 (B2), Rosebush_63 (B2), Sabella_64 (B2), Tinciduntolum_65 (B2), Tres_64 (B2), West99_64 (B2),

Start 9:

- Found in 29 of 41 (70.7%) of genes in pham
- Manual Annotations of this start: 2 of 40
- Called 6.9% of time when present
- Phage (with cluster) where this start called: Baloo_67 (B3), Lars_65 (B2),

Start 11:

- Found in 12 of 41 (29.3%) of genes in pham
- Manual Annotations of this start: 10 of 40
- Called 91.7% of time when present
- Phage (with cluster) where this start called: AnClar_58 (DR), Axumite_62 (DR), BiggityBass_60 (DR), CharlottesWeb_58 (DR), Fresco_62 (DR), Ligma_62 (DR), LittleMunchkin_63 (DR), Shatter_62 (DR), Sisko_60 (DR), Sour_62 (DR), Yago84_59 (DR),

Summary by clusters:

There are 3 clusters represented in this pham: DR, B2, B3,

Info for manual annotations of cluster B2:

- Start number 8 was manually annotated 27 times for cluster B2.
- Start number 9 was manually annotated 1 time for cluster B2.

Info for manual annotations of cluster B3:

- Start number 9 was manually annotated 1 time for cluster B3.

Info for manual annotations of cluster DR:

- Start number 7 was manually annotated 1 time for cluster DR.
- Start number 11 was manually annotated 10 times for cluster DR.

Gene Information:

Gene: AnClar_58 Start: 51779, Stop: 51976, Start Num: 11

Candidate Starts for AnClar_58:

(Start: 7 @51743 has 1 MA's), (Start: 11 @51779 has 10 MA's), (16, 51857), (18, 51878), (23, 51938), (25, 51965),

Gene: Arbiter_62 Start: 55569, Stop: 55829, Start Num: 8

Candidate Starts for Arbiter_62:

(Start: 8 @55569 has 27 MA's), (Start: 9 @55578 has 2 MA's), (12, 55623), (13, 55650), (14, 55677), (17, 55704), (20, 55746), (22, 55779), (23, 55788), (24, 55800),

Gene: Ares_64 Start: 55540, Stop: 55800, Start Num: 8

Candidate Starts for Ares_64:

(Start: 8 @55540 has 27 MA's), (Start: 9 @55549 has 2 MA's), (12, 55594), (13, 55621), (14, 55648), (17, 55675), (20, 55717), (22, 55750), (23, 55759), (24, 55771),

Gene: Axumite_62 Start: 50626, Stop: 50826, Start Num: 11

Candidate Starts for Axumite_62:

(Start: 7 @50590 has 1 MA's), (Start: 11 @50626 has 10 MA's), (18, 50728), (23, 50788), (25, 50815),

Gene: Baloo_67 Start: 57118, Stop: 57366, Start Num: 9

Candidate Starts for Baloo_67:

(1, 56857), (2, 56875), (3, 56887), (4, 56932), (5, 57067), (6, 57079), (Start: 7 @57097 has 1 MA's), (Start: 8 @57109 has 27 MA's), (Start: 9 @57118 has 2 MA's), (10, 57127), (19, 57271), (23, 57328),

Gene: Bananafish_65 Start: 55470, Stop: 55730, Start Num: 8

Candidate Starts for Bananafish_65:

(Start: 8 @55470 has 27 MA's), (Start: 9 @55479 has 2 MA's), (12, 55524), (13, 55551), (14, 55578), (17, 55605), (20, 55647), (22, 55680), (23, 55689), (24, 55701),

Gene: BiggityBass_60 Start: 52323, Stop: 52532, Start Num: 11

Candidate Starts for BiggityBass_60:

(Start: 11 @52323 has 10 MA's), (16, 52413), (23, 52494), (25, 52521),

Gene: Blocker23_64 Start: 55537, Stop: 55797, Start Num: 8

Candidate Starts for Blocker23_64:

(Start: 8 @55537 has 27 MA's), (Start: 9 @55546 has 2 MA's), (12, 55591), (13, 55618), (14, 55645), (17, 55672), (20, 55714), (22, 55747), (23, 55756), (24, 55768),

Gene: Boyle_64 Start: 55578, Stop: 55838, Start Num: 8

Candidate Starts for Boyle_64:

(Start: 8 @55578 has 27 MA's), (Start: 9 @55587 has 2 MA's), (12, 55632), (13, 55659), (14, 55686), (17, 55713), (20, 55755), (22, 55788), (23, 55797), (24, 55809),

Gene: Brownie5_64 Start: 55580, Stop: 55840, Start Num: 8

Candidate Starts for Brownie5_64:

(Start: 8 @55580 has 27 MA's), (Start: 9 @55589 has 2 MA's), (12, 55634), (14, 55688), (17, 55715), (20, 55757), (22, 55790), (23, 55799), (24, 55811),

Gene: Calamitous_65 Start: 55468, Stop: 55728, Start Num: 8

Candidate Starts for Calamitous_65:

(Start: 8 @55468 has 27 MA's), (Start: 9 @55477 has 2 MA's), (12, 55522), (13, 55549), (14, 55576), (17, 55603), (20, 55645), (22, 55678), (23, 55687), (24, 55699),

Gene: CharlottesWeb_58 Start: 49213, Stop: 49410, Start Num: 11

Candidate Starts for CharlottesWeb_58:

(Start: 7 @49177 has 1 MA's), (Start: 11 @49213 has 10 MA's), (18, 49315), (23, 49375),

Gene: Eaglehorse_64 Start: 55458, Stop: 55718, Start Num: 8

Candidate Starts for Eaglehorse_64:

(Start: 8 @55458 has 27 MA's), (Start: 9 @55467 has 2 MA's), (12, 55512), (13, 55539), (14, 55566), (17, 55593), (20, 55635), (22, 55668), (23, 55677), (24, 55689),

Gene: FrenchFry_65 Start: 55583, Stop: 55843, Start Num: 8

Candidate Starts for FrenchFry_65:

(Start: 8 @55583 has 27 MA's), (Start: 9 @55592 has 2 MA's), (12, 55637), (13, 55664), (14, 55691), (17, 55718), (20, 55760), (22, 55793), (23, 55802), (24, 55814),

Gene: Fresco_62 Start: 50626, Stop: 50826, Start Num: 11

Candidate Starts for Fresco_62:

(Start: 7 @50590 has 1 MA's), (Start: 11 @50626 has 10 MA's), (18, 50728), (23, 50788), (25, 50815),

Gene: Glass_65 Start: 55585, Stop: 55845, Start Num: 8

Candidate Starts for Glass_65:

(Start: 8 @55585 has 27 MA's), (Start: 9 @55594 has 2 MA's), (12, 55639), (13, 55666), (14, 55693), (17, 55720), (20, 55762), (22, 55795), (23, 55804), (24, 55816),

Gene: Godines_65 Start: 55844, Stop: 56104, Start Num: 8

Candidate Starts for Godines_65:

(Start: 8 @55844 has 27 MA's), (Start: 9 @55853 has 2 MA's), (12, 55898), (13, 55925), (14, 55952), (17, 55979), (20, 56021), (22, 56054), (23, 56063), (24, 56075),

Gene: Hedgerow_64 Start: 55555, Stop: 55815, Start Num: 8

Candidate Starts for Hedgerow_64:

(Start: 8 @55555 has 27 MA's), (Start: 9 @55564 has 2 MA's), (12, 55609), (13, 55636), (14, 55663), (17, 55690), (20, 55732), (22, 55765), (23, 55774), (24, 55786),

Gene: Holeinone_64 Start: 55443, Stop: 55703, Start Num: 8

Candidate Starts for Holeinone_64:

(Start: 8 @55443 has 27 MA's), (Start: 9 @55452 has 2 MA's), (12, 55497), (13, 55524), (14, 55551), (17, 55578), (20, 55620), (22, 55653), (23, 55662), (24, 55674),

Gene: ItsyBitsy1_63 Start: 55673, Stop: 55933, Start Num: 8

Candidate Starts for ItsyBitsy1_63:

(Start: 8 @55673 has 27 MA's), (Start: 9 @55682 has 2 MA's), (12, 55727), (13, 55754), (14, 55781), (17, 55808), (20, 55850), (22, 55883), (23, 55892), (24, 55904),

Gene: Kheth_64 Start: 55502, Stop: 55762, Start Num: 8

Candidate Starts for Kheth_64:

(Start: 8 @55502 has 27 MA's), (Start: 9 @55511 has 2 MA's), (12, 55556), (13, 55583), (14, 55610), (17, 55637), (20, 55679), (22, 55712), (23, 55721), (24, 55733),

Gene: Lars_65 Start: 55572, Stop: 55823, Start Num: 9

Candidate Starts for Lars_65:

(Start: 8 @55563 has 27 MA's), (Start: 9 @55572 has 2 MA's), (12, 55617), (13, 55644), (14, 55671), (17, 55698), (20, 55740), (22, 55773), (23, 55782), (24, 55794),

Gene: Laurie_64 Start: 55263, Stop: 55523, Start Num: 8

Candidate Starts for Laurie_64:

(Start: 8 @55263 has 27 MA's), (Start: 9 @55272 has 2 MA's), (12, 55317), (13, 55344), (14, 55371), (17, 55398), (20, 55440), (22, 55473), (23, 55482), (24, 55494),

Gene: Lephleur_64 Start: 55428, Stop: 55688, Start Num: 8

Candidate Starts for Lephleur_64:

(Start: 8 @55428 has 27 MA's), (Start: 9 @55437 has 2 MA's), (12, 55482), (13, 55509), (14, 55536), (17, 55563), (20, 55605), (22, 55638), (23, 55647), (24, 55659),

Gene: Ligma_62 Start: 50626, Stop: 50826, Start Num: 11

Candidate Starts for Ligma_62:

(Start: 7 @50590 has 1 MA's), (Start: 11 @50626 has 10 MA's), (18, 50728), (23, 50788), (25, 50815),

Gene: LittleMunchkin_63 Start: 53357, Stop: 53581, Start Num: 11

Candidate Starts for LittleMunchkin_63:

(Start: 11 @53357 has 10 MA's), (15, 53456), (18, 53483), (21, 53531), (23, 53543), (25, 53570),

Gene: LizLemon_64 Start: 55590, Stop: 55850, Start Num: 8

Candidate Starts for LizLemon_64:

(Start: 8 @55590 has 27 MA's), (Start: 9 @55599 has 2 MA's), (12, 55644), (13, 55671), (14, 55698), (17, 55725), (20, 55767), (22, 55800), (23, 55809), (24, 55821),

Gene: Mariokart_58 Start: 49462, Stop: 49695, Start Num: 7

Candidate Starts for Mariokart_58:

(Start: 7 @49462 has 1 MA's), (Start: 11 @49498 has 10 MA's), (18, 49600), (23, 49660),

Gene: MasterPo_65 Start: 55460, Stop: 55720, Start Num: 8

Candidate Starts for MasterPo_65:

(Start: 8 @55460 has 27 MA's), (Start: 9 @55469 has 2 MA's), (12, 55514), (13, 55541), (14, 55568), (17, 55595), (20, 55637), (22, 55670), (23, 55679), (24, 55691),

Gene: Opia_65 Start: 55480, Stop: 55740, Start Num: 8

Candidate Starts for Opia_65:

(Start: 8 @55480 has 27 MA's), (Start: 9 @55489 has 2 MA's), (12, 55534), (13, 55561), (14, 55588), (17, 55615), (20, 55657), (22, 55690), (23, 55699), (24, 55711),

Gene: Qyrzula_58 Start: 55591, Stop: 55851, Start Num: 8

Candidate Starts for Qyrzula_58:

(Start: 8 @55591 has 27 MA's), (Start: 9 @55600 has 2 MA's), (12, 55645), (13, 55672), (14, 55699), (17, 55726), (20, 55768), (22, 55801), (23, 55810), (24, 55822),

Gene: Rhinoforte_64 Start: 55513, Stop: 55773, Start Num: 8

Candidate Starts for Rhinoforte_64:

(Start: 8 @55513 has 27 MA's), (Start: 9 @55522 has 2 MA's), (12, 55567), (13, 55594), (14, 55621), (17, 55648), (20, 55690), (22, 55723), (23, 55732), (24, 55744),

Gene: Rosebush_63 Start: 55576, Stop: 55836, Start Num: 8

Candidate Starts for Rosebush_63:

(Start: 8 @55576 has 27 MA's), (Start: 9 @55585 has 2 MA's), (12, 55630), (13, 55657), (14, 55684), (17, 55711), (20, 55753), (22, 55786), (23, 55795), (24, 55807),

Gene: Sabella_64 Start: 55412, Stop: 55672, Start Num: 8

Candidate Starts for Sabella_64:

(Start: 8 @55412 has 27 MA's), (Start: 9 @55421 has 2 MA's), (12, 55466), (13, 55493), (14, 55520), (17, 55547), (20, 55589), (22, 55622), (23, 55631), (24, 55643),

Gene: Shatter_62 Start: 50626, Stop: 50826, Start Num: 11

Candidate Starts for Shatter_62:

(Start: 7 @50590 has 1 MA's), (Start: 11 @50626 has 10 MA's), (18, 50728), (23, 50788), (25, 50815),

Gene: Sisko_60 Start: 50847, Stop: 51044, Start Num: 11

Candidate Starts for Sisko_60:

(Start: 11 @50847 has 10 MA's), (16, 50925), (18, 50946), (23, 51006), (25, 51033),

Gene: Sour_62 Start: 53064, Stop: 53273, Start Num: 11

Candidate Starts for Sour_62:

(Start: 7 @53028 has 1 MA's), (Start: 11 @53064 has 10 MA's), (16, 53154), (23, 53235), (25, 53262),

Gene: Tinciduntolum_65 Start: 55579, Stop: 55839, Start Num: 8

Candidate Starts for Tinciduntolum_65:

(Start: 8 @55579 has 27 MA's), (Start: 9 @55588 has 2 MA's), (12, 55633), (14, 55687), (17, 55714), (20, 55756), (22, 55789), (23, 55798), (24, 55810),

Gene: Tres_64 Start: 55433, Stop: 55693, Start Num: 8

Candidate Starts for Tres_64:

(Start: 8 @55433 has 27 MA's), (Start: 9 @55442 has 2 MA's), (12, 55487), (13, 55514), (14, 55541), (17, 55568), (20, 55610), (22, 55643), (23, 55652), (24, 55664),

Gene: West99_64 Start: 55606, Stop: 55866, Start Num: 8

Candidate Starts for West99_64:

(Start: 8 @55606 has 27 MA's), (Start: 9 @55615 has 2 MA's), (12, 55660), (13, 55687), (14, 55714), (17, 55741), (20, 55783), (22, 55816), (23, 55825), (24, 55837),

Gene: Yago84_59 Start: 50332, Stop: 50529, Start Num: 11

Candidate Starts for Yago84_59:

(Start: 11 @50332 has 10 MA's), (16, 50410), (18, 50431), (23, 50491), (25, 50518),