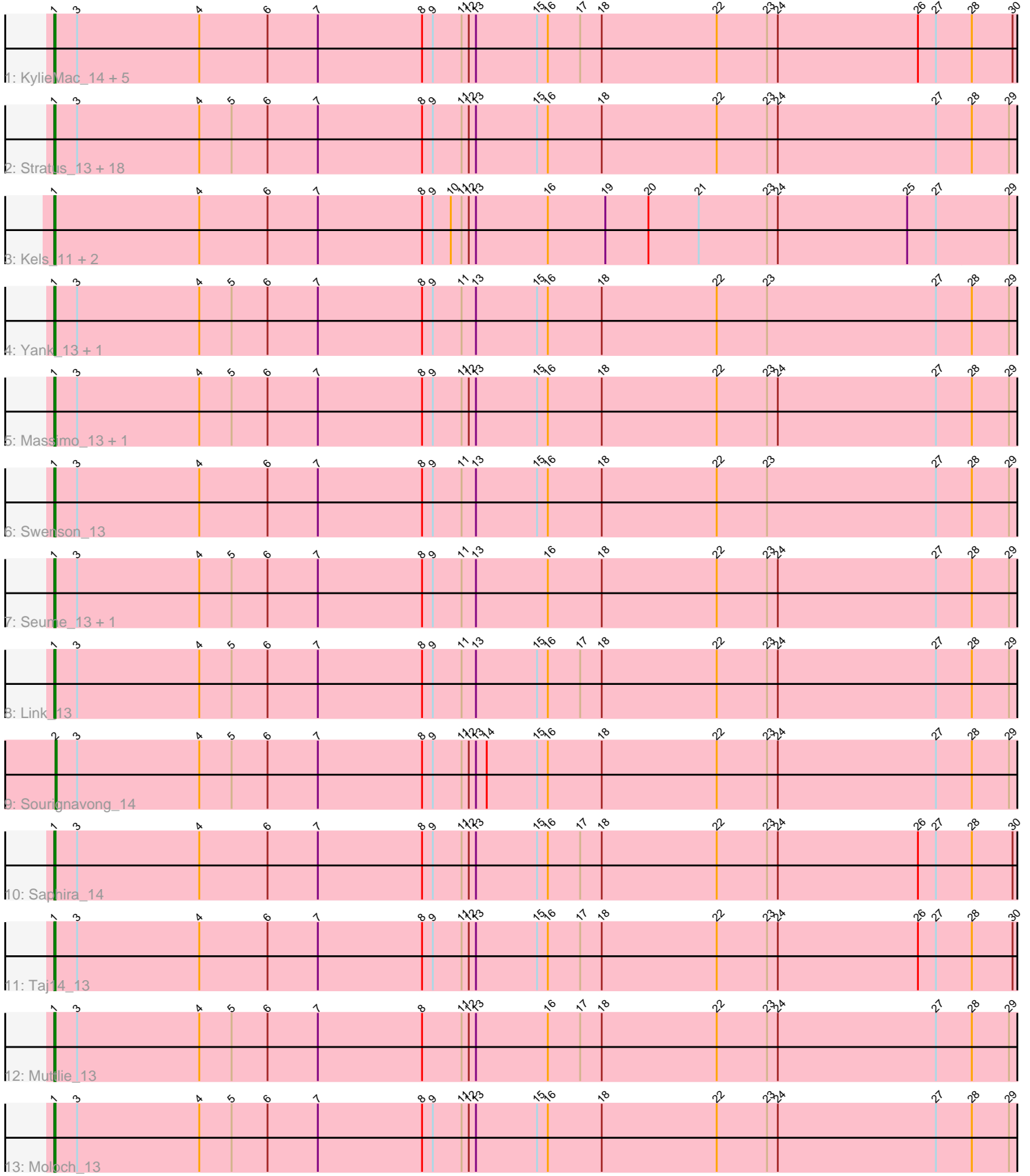


Zoomed Pham 196663



Note: Tracks are now grouped by subcluster and scaled. Switching in subcluster is indicated by changes in track color. Track scale is now set by default to display the region 30 bp upstream of start 1 to 30 bp downstream of the last possible start. If this default region is judged to be packed too tightly with annotated starts, the track will be further scaled to only show that region of the ORF with annotated starts. This action will be indicated by adding "Zoomed" to the title. For starts, yellow indicates the location of called starts comprised solely of Glimmer/GeneMark auto-annotations, green indicates the location of called starts with at least 1 manual gene annotation.

Pham 196663 Report

This analysis was run 12/09/24 on database version 580.

Pham number 196663 has 41 members, 0 are drafts.

Phages represented in each track:

- Track 1 : KylieMac_14, Blair_13, Laila_15, Elkhorn_13, StewieGriff_13, Lore_13
- Track 2 : Stratus_13, Prospero_13, Jessica_14, TymAbreu_13, Mariposa_13, Maggie_13, Guntur_13, Copper_13, Chestnut_13, Sandman_13, CGermain_13, Dewayne_13, Ronnie_13, Courtney3_13, Inspire2_13, LouisXIV_13, Hunnie_13, Azathoth_13, Arby_13
- Track 3 : Kels_11, Arielagos_11, SerialPhiller_11
- Track 4 : Yank_13, Decurro_13
- Track 5 : Massimo_13, TinoCrisci_13
- Track 6 : Swenson_13
- Track 7 : Seume_13, Toulouse_12
- Track 8 : Link_13
- Track 9 : Sourignavong_14
- Track 10 : Saphira_14
- Track 11 : Taj14_13
- Track 12 : Muttie_13
- Track 13 : Moloch_13

Summary of Final Annotations (See graph section above for start numbers):

The start number called the most often in the published annotations is 1, it was called in 40 of the 41 non-draft genes in the pham.

Genes that call this "Most Annotated" start:

- Arby_13, Arielagos_11, Azathoth_13, Blair_13, CGermain_13, Chestnut_13, Copper_13, Courtney3_13, Decurro_13, Dewayne_13, Elkhorn_13, Guntur_13, Hunnie_13, Inspire2_13, Jessica_14, Kels_11, KylieMac_14, Laila_15, Link_13, Lore_13, LouisXIV_13, Maggie_13, Mariposa_13, Massimo_13, Moloch_13, Muttie_13, Prospero_13, Ronnie_13, Sandman_13, Saphira_14, SerialPhiller_11, Seume_13, StewieGriff_13, Stratus_13, Swenson_13, Taj14_13, TinoCrisci_13, Toulouse_12, TymAbreu_13, Yank_13,

Genes that have the "Most Annotated" start but do not call it:

-

Genes that do not have the "Most Annotated" start:

- Sourignavong_14,

Summary by start number:

Start 1:

- Found in 40 of 41 (97.6%) of genes in pham
- Manual Annotations of this start: 40 of 41
- Called 100.0% of time when present
- Phage (with cluster) where this start called: Arby_13 (AN), Arielagos_11 (AN), Azathoth_13 (AN), Blair_13 (AN), CGermain_13 (AN), Chestnut_13 (AN), Copper_13 (AN), Courtney3_13 (AN), Decurro_13 (AN), Dewayne_13 (AN), Elkhorn_13 (AN), Guntur_13 (AN), Hunnie_13 (AN), Inspire2_13 (AN), Jessica_14 (AN), Kels_11 (AN), KylieMac_14 (AN), Laila_15 (AN), Link_13 (AN), Lore_13 (AN), LouisXIV_13 (AN), Maggie_13 (AN), Mariposa_13 (AN), Massimo_13 (AN), Moloch_13 (AN), Muttie_13 (AN), Prospero_13 (AN), Ronnie_13 (AN), Sandman_13 (AN), Saphira_14 (AN), SerialPhiller_11 (AN), Seume_13 (AN), StewieGriff_13 (AN), Stratus_13 (AN), Swenson_13 (AN), Taj14_13 (AN), TinoCrisci_13 (AN), Toulouse_12 (AN), TymAbreu_13 (AN), Yank_13 (AN),

Start 2:

- Found in 1 of 41 (2.4%) of genes in pham
- Manual Annotations of this start: 1 of 41
- Called 100.0% of time when present
- Phage (with cluster) where this start called: Sourignavong_14 (AN),

Summary by clusters:

There is one cluster represented in this pham: AN

Info for manual annotations of cluster AN:

- Start number 1 was manually annotated 40 times for cluster AN.
- Start number 2 was manually annotated 1 time for cluster AN.

Gene Information:

Gene: Arby_13 Start: 7282, Stop: 9279, Start Num: 1

Candidate Starts for Arby_13:

(Start: 1 @7282 has 40 MA's), (3, 7300), (4, 7402), (5, 7429), (6, 7459), (7, 7501), (8, 7588), (9, 7597), (11, 7621), (12, 7627), (13, 7633), (15, 7684), (16, 7693), (18, 7738), (22, 7834), (23, 7876), (24, 7885), (27, 8017), (28, 8047), (29, 8077), (31, 8086), (32, 8110), (35, 8182), (36, 8188), (38, 8206), (39, 8230), (40, 8233), (41, 8254), (42, 8266), (43, 8284), (45, 8335), (46, 8338), (49, 8467), (53, 8587), (55, 8623), (58, 8674), (59, 8686), (61, 8728), (62, 8740), (63, 8749), (64, 8785), (66, 8818), (67, 8854), (68, 8950), (71, 9001), (72, 9004), (76, 9184), (80, 9235), (81, 9253), (82, 9256),

Gene: Arielagos_11 Start: 6936, Stop: 8759, Start Num: 1

Candidate Starts for Arielagos_11:

(Start: 1 @6936 has 40 MA's), (4, 7056), (6, 7113), (7, 7155), (8, 7242), (9, 7251), (10, 7266), (11, 7275), (12, 7281), (13, 7287), (16, 7347), (19, 7395), (20, 7431), (21, 7473), (23, 7530), (24, 7539), (25, 7647), (27, 7671), (29, 7731), (32, 7764), (35, 7836), (36, 7842), (38, 7860), (41, 7908), (44, 7980), (46, 7992), (50, 8088), (51, 8103), (52, 8124), (53, 8145), (54, 8166), (55, 8178), (66, 8298),

(69, 8439), (70, 8472), (74, 8523), (75, 8595), (77, 8673),

Gene: Azathoth_13 Start: 7282, Stop: 9279, Start Num: 1

Candidate Starts for Azathoth_13:

(Start: 1 @7282 has 40 MA's), (3, 7300), (4, 7402), (5, 7429), (6, 7459), (7, 7501), (8, 7588), (9, 7597), (11, 7621), (12, 7627), (13, 7633), (15, 7684), (16, 7693), (18, 7738), (22, 7834), (23, 7876), (24, 7885), (27, 8017), (28, 8047), (29, 8077), (31, 8086), (32, 8110), (35, 8182), (36, 8188), (38, 8206), (39, 8230), (40, 8233), (41, 8254), (42, 8266), (43, 8284), (45, 8335), (46, 8338), (49, 8467), (53, 8587), (55, 8623), (58, 8674), (59, 8686), (61, 8728), (62, 8740), (63, 8749), (64, 8785), (66, 8818), (67, 8854), (68, 8950), (71, 9001), (72, 9004), (76, 9184), (80, 9235), (81, 9253), (82, 9256),

Gene: Blair_13 Start: 7279, Stop: 9276, Start Num: 1

Candidate Starts for Blair_13:

(Start: 1 @7279 has 40 MA's), (3, 7297), (4, 7399), (6, 7456), (7, 7498), (8, 7585), (9, 7594), (11, 7618), (12, 7624), (13, 7630), (15, 7681), (16, 7690), (17, 7717), (18, 7735), (22, 7831), (23, 7873), (24, 7882), (26, 7999), (27, 8014), (28, 8044), (30, 8077), (31, 8083), (32, 8107), (35, 8179), (36, 8185), (38, 8203), (41, 8251), (42, 8263), (45, 8332), (46, 8335), (47, 8344), (48, 8431), (49, 8464), (52, 8551), (53, 8584), (55, 8620), (56, 8629), (57, 8638), (59, 8683), (60, 8707), (62, 8737), (63, 8746), (64, 8782), (65, 8791), (66, 8815), (67, 8851), (68, 8947), (69, 8956), (71, 8998), (76, 9181), (79, 9223), (80, 9232), (82, 9253),

Gene: CGermain_13 Start: 7282, Stop: 9279, Start Num: 1

Candidate Starts for CGermain_13:

(Start: 1 @7282 has 40 MA's), (3, 7300), (4, 7402), (5, 7429), (6, 7459), (7, 7501), (8, 7588), (9, 7597), (11, 7621), (12, 7627), (13, 7633), (15, 7684), (16, 7693), (18, 7738), (22, 7834), (23, 7876), (24, 7885), (27, 8017), (28, 8047), (29, 8077), (31, 8086), (32, 8110), (35, 8182), (36, 8188), (38, 8206), (39, 8230), (40, 8233), (41, 8254), (42, 8266), (43, 8284), (45, 8335), (46, 8338), (49, 8467), (53, 8587), (55, 8623), (58, 8674), (59, 8686), (61, 8728), (62, 8740), (63, 8749), (64, 8785), (66, 8818), (67, 8854), (68, 8950), (71, 9001), (72, 9004), (76, 9184), (80, 9235), (81, 9253), (82, 9256),

Gene: Chestnut_13 Start: 7282, Stop: 9279, Start Num: 1

Candidate Starts for Chestnut_13:

(Start: 1 @7282 has 40 MA's), (3, 7300), (4, 7402), (5, 7429), (6, 7459), (7, 7501), (8, 7588), (9, 7597), (11, 7621), (12, 7627), (13, 7633), (15, 7684), (16, 7693), (18, 7738), (22, 7834), (23, 7876), (24, 7885), (27, 8017), (28, 8047), (29, 8077), (31, 8086), (32, 8110), (35, 8182), (36, 8188), (38, 8206), (39, 8230), (40, 8233), (41, 8254), (42, 8266), (43, 8284), (45, 8335), (46, 8338), (49, 8467), (53, 8587), (55, 8623), (58, 8674), (59, 8686), (61, 8728), (62, 8740), (63, 8749), (64, 8785), (66, 8818), (67, 8854), (68, 8950), (71, 9001), (72, 9004), (76, 9184), (80, 9235), (81, 9253), (82, 9256),

Gene: Copper_13 Start: 7282, Stop: 9279, Start Num: 1

Candidate Starts for Copper_13:

(Start: 1 @7282 has 40 MA's), (3, 7300), (4, 7402), (5, 7429), (6, 7459), (7, 7501), (8, 7588), (9, 7597), (11, 7621), (12, 7627), (13, 7633), (15, 7684), (16, 7693), (18, 7738), (22, 7834), (23, 7876), (24, 7885), (27, 8017), (28, 8047), (29, 8077), (31, 8086), (32, 8110), (35, 8182), (36, 8188), (38, 8206), (39, 8230), (40, 8233), (41, 8254), (42, 8266), (43, 8284), (45, 8335), (46, 8338), (49, 8467), (53, 8587), (55, 8623), (58, 8674), (59, 8686), (61, 8728), (62, 8740), (63, 8749), (64, 8785), (66, 8818), (67, 8854), (68, 8950), (71, 9001), (72, 9004), (76, 9184), (80, 9235), (81, 9253), (82, 9256),

Gene: Courtney3_13 Start: 7282, Stop: 9279, Start Num: 1

Candidate Starts for Courtney3_13:

(Start: 1 @7282 has 40 MA's), (3, 7300), (4, 7402), (5, 7429), (6, 7459), (7, 7501), (8, 7588), (9, 7597), (11, 7621), (12, 7627), (13, 7633), (15, 7684), (16, 7693), (18, 7738), (22, 7834), (23, 7876), (24, 7885), (27, 8017), (28, 8047), (29, 8077), (31, 8086), (32, 8110), (35, 8182), (36, 8188), (38, 8206),

(39, 8230), (40, 8233), (41, 8254), (42, 8266), (43, 8284), (45, 8335), (46, 8338), (49, 8467), (53, 8587), (55, 8623), (58, 8674), (59, 8686), (61, 8728), (62, 8740), (63, 8749), (64, 8785), (66, 8818), (67, 8854), (68, 8950), (71, 9001), (72, 9004), (76, 9184), (80, 9235), (81, 9253), (82, 9256),

Gene: Decurro_13 Start: 7282, Stop: 9279, Start Num: 1

Candidate Starts for Decurro_13:

(Start: 1 @7282 has 40 MA's), (3, 7300), (4, 7402), (5, 7429), (6, 7459), (7, 7501), (8, 7588), (9, 7597), (11, 7621), (13, 7633), (15, 7684), (16, 7693), (18, 7738), (22, 7834), (23, 7876), (27, 8017), (28, 8047), (29, 8077), (31, 8086), (32, 8110), (35, 8182), (36, 8188), (38, 8206), (39, 8230), (40, 8233), (41, 8254), (42, 8266), (43, 8284), (45, 8335), (46, 8338), (47, 8347), (49, 8467), (52, 8554), (53, 8587), (55, 8623), (58, 8674), (59, 8686), (61, 8728), (62, 8740), (63, 8749), (64, 8785), (66, 8818), (67, 8854), (68, 8950), (71, 9001), (72, 9004), (76, 9184), (80, 9235), (81, 9253), (82, 9256),

Gene: Dewayne_13 Start: 7282, Stop: 9279, Start Num: 1

Candidate Starts for Dewayne_13:

(Start: 1 @7282 has 40 MA's), (3, 7300), (4, 7402), (5, 7429), (6, 7459), (7, 7501), (8, 7588), (9, 7597), (11, 7621), (12, 7627), (13, 7633), (15, 7684), (16, 7693), (18, 7738), (22, 7834), (23, 7876), (24, 7885), (27, 8017), (28, 8047), (29, 8077), (31, 8086), (32, 8110), (35, 8182), (36, 8188), (38, 8206), (39, 8230), (40, 8233), (41, 8254), (42, 8266), (43, 8284), (45, 8335), (46, 8338), (49, 8467), (53, 8587), (55, 8623), (58, 8674), (59, 8686), (61, 8728), (62, 8740), (63, 8749), (64, 8785), (66, 8818), (67, 8854), (68, 8950), (71, 9001), (72, 9004), (76, 9184), (80, 9235), (81, 9253), (82, 9256),

Gene: Elkhorn_13 Start: 7279, Stop: 9276, Start Num: 1

Candidate Starts for Elkhorn_13:

(Start: 1 @7279 has 40 MA's), (3, 7297), (4, 7399), (6, 7456), (7, 7498), (8, 7585), (9, 7594), (11, 7618), (12, 7624), (13, 7630), (15, 7681), (16, 7690), (17, 7717), (18, 7735), (22, 7831), (23, 7873), (24, 7882), (26, 7999), (27, 8014), (28, 8044), (30, 8077), (31, 8083), (32, 8107), (35, 8179), (36, 8185), (38, 8203), (41, 8251), (42, 8263), (45, 8332), (46, 8335), (47, 8344), (48, 8431), (49, 8464), (52, 8551), (53, 8584), (55, 8620), (56, 8629), (57, 8638), (59, 8683), (60, 8707), (62, 8737), (63, 8746), (64, 8782), (65, 8791), (66, 8815), (67, 8851), (68, 8947), (69, 8956), (71, 8998), (76, 9181), (79, 9223), (80, 9232), (82, 9253),

Gene: Guntur_13 Start: 7282, Stop: 9279, Start Num: 1

Candidate Starts for Guntur_13:

(Start: 1 @7282 has 40 MA's), (3, 7300), (4, 7402), (5, 7429), (6, 7459), (7, 7501), (8, 7588), (9, 7597), (11, 7621), (12, 7627), (13, 7633), (15, 7684), (16, 7693), (18, 7738), (22, 7834), (23, 7876), (24, 7885), (27, 8017), (28, 8047), (29, 8077), (31, 8086), (32, 8110), (35, 8182), (36, 8188), (38, 8206), (39, 8230), (40, 8233), (41, 8254), (42, 8266), (43, 8284), (45, 8335), (46, 8338), (49, 8467), (53, 8587), (55, 8623), (58, 8674), (59, 8686), (61, 8728), (62, 8740), (63, 8749), (64, 8785), (66, 8818), (67, 8854), (68, 8950), (71, 9001), (72, 9004), (76, 9184), (80, 9235), (81, 9253), (82, 9256),

Gene: Hunnie_13 Start: 7282, Stop: 9279, Start Num: 1

Candidate Starts for Hunnie_13:

(Start: 1 @7282 has 40 MA's), (3, 7300), (4, 7402), (5, 7429), (6, 7459), (7, 7501), (8, 7588), (9, 7597), (11, 7621), (12, 7627), (13, 7633), (15, 7684), (16, 7693), (18, 7738), (22, 7834), (23, 7876), (24, 7885), (27, 8017), (28, 8047), (29, 8077), (31, 8086), (32, 8110), (35, 8182), (36, 8188), (38, 8206), (39, 8230), (40, 8233), (41, 8254), (42, 8266), (43, 8284), (45, 8335), (46, 8338), (49, 8467), (53, 8587), (55, 8623), (58, 8674), (59, 8686), (61, 8728), (62, 8740), (63, 8749), (64, 8785), (66, 8818), (67, 8854), (68, 8950), (71, 9001), (72, 9004), (76, 9184), (80, 9235), (81, 9253), (82, 9256),

Gene: Inspire2_13 Start: 7282, Stop: 9279, Start Num: 1

Candidate Starts for Inspire2_13:

(Start: 1 @7282 has 40 MA's), (3, 7300), (4, 7402), (5, 7429), (6, 7459), (7, 7501), (8, 7588), (9, 7597), (11, 7621), (12, 7627), (13, 7633), (15, 7684), (16, 7693), (18, 7738), (22, 7834), (23, 7876), (24, 7885), (27, 8017), (28, 8047), (29, 8077), (31, 8086), (32, 8110), (35, 8182), (36, 8188), (38, 8206), (39, 8230), (40, 8233), (41, 8254), (42, 8266), (43, 8284), (45, 8335), (46, 8338), (49, 8467), (53, 8587), (55, 8623), (58, 8674), (59, 8686), (61, 8728), (62, 8740), (63, 8749), (64, 8785), (66, 8818), (67, 8854), (68, 8950), (71, 9001), (72, 9004), (76, 9184), (80, 9235), (81, 9253), (82, 9256),

Gene: Jessica_14 Start: 7282, Stop: 9279, Start Num: 1

Candidate Starts for Jessica_14:

(Start: 1 @7282 has 40 MA's), (3, 7300), (4, 7402), (5, 7429), (6, 7459), (7, 7501), (8, 7588), (9, 7597), (11, 7621), (12, 7627), (13, 7633), (15, 7684), (16, 7693), (18, 7738), (22, 7834), (23, 7876), (24, 7885), (27, 8017), (28, 8047), (29, 8077), (31, 8086), (32, 8110), (35, 8182), (36, 8188), (38, 8206), (39, 8230), (40, 8233), (41, 8254), (42, 8266), (43, 8284), (45, 8335), (46, 8338), (49, 8467), (53, 8587), (55, 8623), (58, 8674), (59, 8686), (61, 8728), (62, 8740), (63, 8749), (64, 8785), (66, 8818), (67, 8854), (68, 8950), (71, 9001), (72, 9004), (76, 9184), (80, 9235), (81, 9253), (82, 9256),

Gene: Kels_11 Start: 6861, Stop: 8684, Start Num: 1

Candidate Starts for Kels_11:

(Start: 1 @6861 has 40 MA's), (4, 6981), (6, 7038), (7, 7080), (8, 7167), (9, 7176), (10, 7191), (11, 7200), (12, 7206), (13, 7212), (16, 7272), (19, 7320), (20, 7356), (21, 7398), (23, 7455), (24, 7464), (25, 7572), (27, 7596), (29, 7656), (32, 7689), (35, 7761), (36, 7767), (38, 7785), (41, 7833), (44, 7905), (46, 7917), (50, 8013), (51, 8028), (52, 8049), (53, 8070), (54, 8091), (55, 8103), (66, 8223), (69, 8364), (70, 8397), (74, 8448), (75, 8520), (77, 8598),

Gene: KylieMac_14 Start: 7266, Stop: 9263, Start Num: 1

Candidate Starts for KylieMac_14:

(Start: 1 @7266 has 40 MA's), (3, 7284), (4, 7386), (6, 7443), (7, 7485), (8, 7572), (9, 7581), (11, 7605), (12, 7611), (13, 7617), (15, 7668), (16, 7677), (17, 7704), (18, 7722), (22, 7818), (23, 7860), (24, 7869), (26, 7986), (27, 8001), (28, 8031), (30, 8064), (31, 8070), (32, 8094), (35, 8166), (36, 8172), (38, 8190), (41, 8238), (42, 8250), (45, 8319), (46, 8322), (47, 8331), (48, 8418), (49, 8451), (52, 8538), (53, 8571), (55, 8607), (56, 8616), (57, 8625), (59, 8670), (60, 8694), (62, 8724), (63, 8733), (64, 8769), (65, 8778), (66, 8802), (67, 8838), (68, 8934), (69, 8943), (71, 8985), (76, 9168), (79, 9210), (80, 9219), (82, 9240),

Gene: Laila_15 Start: 7279, Stop: 9276, Start Num: 1

Candidate Starts for Laila_15:

(Start: 1 @7279 has 40 MA's), (3, 7297), (4, 7399), (6, 7456), (7, 7498), (8, 7585), (9, 7594), (11, 7618), (12, 7624), (13, 7630), (15, 7681), (16, 7690), (17, 7717), (18, 7735), (22, 7831), (23, 7873), (24, 7882), (26, 7999), (27, 8014), (28, 8044), (30, 8077), (31, 8083), (32, 8107), (35, 8179), (36, 8185), (38, 8203), (41, 8251), (42, 8263), (45, 8332), (46, 8335), (47, 8344), (48, 8431), (49, 8464), (52, 8551), (53, 8584), (55, 8620), (56, 8629), (57, 8638), (59, 8683), (60, 8707), (62, 8737), (63, 8746), (64, 8782), (65, 8791), (66, 8815), (67, 8851), (68, 8947), (69, 8956), (71, 8998), (76, 9181), (79, 9223), (80, 9232), (82, 9253),

Gene: Link_13 Start: 7281, Stop: 9278, Start Num: 1

Candidate Starts for Link_13:

(Start: 1 @7281 has 40 MA's), (3, 7299), (4, 7401), (5, 7428), (6, 7458), (7, 7500), (8, 7587), (9, 7596), (11, 7620), (13, 7632), (15, 7683), (16, 7692), (17, 7719), (18, 7737), (22, 7833), (23, 7875), (24, 7884), (27, 8016), (28, 8046), (29, 8076), (31, 8085), (32, 8109), (35, 8181), (36, 8187), (38, 8205), (39, 8229), (40, 8232), (41, 8253), (42, 8265), (43, 8283), (45, 8334), (46, 8337), (47, 8346), (49, 8466), (52, 8553), (53, 8586), (55, 8622), (58, 8673), (59, 8685), (61, 8727), (62, 8739), (63, 8748), (64, 8784), (66, 8817), (67, 8853), (68, 8949), (71, 9000), (72, 9003), (76, 9183), (80, 9234), (81, 9252), (82, 9255),

Gene: Lore_13 Start: 7279, Stop: 9276, Start Num: 1

Candidate Starts for Lore_13:

(Start: 1 @7279 has 40 MA's), (3, 7297), (4, 7399), (6, 7456), (7, 7498), (8, 7585), (9, 7594), (11, 7618), (12, 7624), (13, 7630), (15, 7681), (16, 7690), (17, 7717), (18, 7735), (22, 7831), (23, 7873), (24, 7882), (26, 7999), (27, 8014), (28, 8044), (30, 8077), (31, 8083), (32, 8107), (35, 8179), (36, 8185), (38, 8203), (41, 8251), (42, 8263), (45, 8332), (46, 8335), (47, 8344), (48, 8431), (49, 8464), (52, 8551), (53, 8584), (55, 8620), (56, 8629), (57, 8638), (59, 8683), (60, 8707), (62, 8737), (63, 8746), (64, 8782), (65, 8791), (66, 8815), (67, 8851), (68, 8947), (69, 8956), (71, 8998), (76, 9181), (79, 9223), (80, 9232), (82, 9253),

Gene: LouisXIV_13 Start: 7282, Stop: 9279, Start Num: 1

Candidate Starts for LouisXIV_13:

(Start: 1 @7282 has 40 MA's), (3, 7300), (4, 7402), (5, 7429), (6, 7459), (7, 7501), (8, 7588), (9, 7597), (11, 7621), (12, 7627), (13, 7633), (15, 7684), (16, 7693), (18, 7738), (22, 7834), (23, 7876), (24, 7885), (27, 8017), (28, 8047), (29, 8077), (31, 8086), (32, 8110), (35, 8182), (36, 8188), (38, 8206), (39, 8230), (40, 8233), (41, 8254), (42, 8266), (43, 8284), (45, 8335), (46, 8338), (49, 8467), (53, 8587), (55, 8623), (58, 8674), (59, 8686), (61, 8728), (62, 8740), (63, 8749), (64, 8785), (66, 8818), (67, 8854), (68, 8950), (71, 9001), (72, 9004), (76, 9184), (80, 9235), (81, 9253), (82, 9256),

Gene: Maggie_13 Start: 7282, Stop: 9279, Start Num: 1

Candidate Starts for Maggie_13:

(Start: 1 @7282 has 40 MA's), (3, 7300), (4, 7402), (5, 7429), (6, 7459), (7, 7501), (8, 7588), (9, 7597), (11, 7621), (12, 7627), (13, 7633), (15, 7684), (16, 7693), (18, 7738), (22, 7834), (23, 7876), (24, 7885), (27, 8017), (28, 8047), (29, 8077), (31, 8086), (32, 8110), (35, 8182), (36, 8188), (38, 8206), (39, 8230), (40, 8233), (41, 8254), (42, 8266), (43, 8284), (45, 8335), (46, 8338), (49, 8467), (53, 8587), (55, 8623), (58, 8674), (59, 8686), (61, 8728), (62, 8740), (63, 8749), (64, 8785), (66, 8818), (67, 8854), (68, 8950), (71, 9001), (72, 9004), (76, 9184), (80, 9235), (81, 9253), (82, 9256),

Gene: Mariposa_13 Start: 7282, Stop: 9279, Start Num: 1

Candidate Starts for Mariposa_13:

(Start: 1 @7282 has 40 MA's), (3, 7300), (4, 7402), (5, 7429), (6, 7459), (7, 7501), (8, 7588), (9, 7597), (11, 7621), (12, 7627), (13, 7633), (15, 7684), (16, 7693), (18, 7738), (22, 7834), (23, 7876), (24, 7885), (27, 8017), (28, 8047), (29, 8077), (31, 8086), (32, 8110), (35, 8182), (36, 8188), (38, 8206), (39, 8230), (40, 8233), (41, 8254), (42, 8266), (43, 8284), (45, 8335), (46, 8338), (49, 8467), (53, 8587), (55, 8623), (58, 8674), (59, 8686), (61, 8728), (62, 8740), (63, 8749), (64, 8785), (66, 8818), (67, 8854), (68, 8950), (71, 9001), (72, 9004), (76, 9184), (80, 9235), (81, 9253), (82, 9256),

Gene: Massimo_13 Start: 7282, Stop: 9279, Start Num: 1

Candidate Starts for Massimo_13:

(Start: 1 @7282 has 40 MA's), (3, 7300), (4, 7402), (5, 7429), (6, 7459), (7, 7501), (8, 7588), (9, 7597), (11, 7621), (12, 7627), (13, 7633), (15, 7684), (16, 7693), (18, 7738), (22, 7834), (23, 7876), (24, 7885), (27, 8017), (28, 8047), (29, 8077), (31, 8086), (32, 8110), (34, 8173), (35, 8182), (36, 8188), (38, 8206), (39, 8230), (40, 8233), (41, 8254), (42, 8266), (43, 8284), (45, 8335), (46, 8338), (49, 8467), (53, 8587), (55, 8623), (58, 8674), (59, 8686), (61, 8728), (62, 8740), (63, 8749), (64, 8785), (66, 8818), (67, 8854), (68, 8950), (71, 9001), (72, 9004), (76, 9184), (80, 9235), (81, 9253), (82, 9256),

Gene: Moloch_13 Start: 7356, Stop: 9353, Start Num: 1

Candidate Starts for Moloch_13:

(Start: 1 @7356 has 40 MA's), (3, 7374), (4, 7476), (5, 7503), (6, 7533), (7, 7575), (8, 7662), (9, 7671), (11, 7695), (12, 7701), (13, 7707), (15, 7758), (16, 7767), (18, 7812), (22, 7908), (23, 7950), (24, 7959), (27, 8091), (28, 8121), (29, 8151), (31, 8160), (32, 8184), (35, 8256), (36, 8262), (38, 8280),

(39, 8304), (40, 8307), (41, 8328), (42, 8340), (43, 8358), (45, 8409), (46, 8412), (49, 8541), (53, 8661), (55, 8697), (58, 8748), (59, 8760), (61, 8802), (62, 8814), (63, 8823), (64, 8859), (66, 8892), (67, 8928), (68, 9024), (71, 9075), (72, 9078), (73, 9108), (76, 9258), (80, 9309), (81, 9327), (82, 9330),

Gene: Muttlie_13 Start: 7282, Stop: 9279, Start Num: 1

Candidate Starts for Muttlie_13:

(Start: 1 @7282 has 40 MA's), (3, 7300), (4, 7402), (5, 7429), (6, 7459), (7, 7501), (8, 7588), (11, 7621), (12, 7627), (13, 7633), (16, 7693), (17, 7720), (18, 7738), (22, 7834), (23, 7876), (24, 7885), (27, 8017), (28, 8047), (29, 8077), (31, 8086), (32, 8110), (35, 8182), (36, 8188), (38, 8206), (39, 8230), (40, 8233), (41, 8254), (42, 8266), (43, 8284), (45, 8335), (46, 8338), (47, 8347), (48, 8434), (49, 8467), (52, 8554), (53, 8587), (55, 8623), (58, 8674), (59, 8686), (61, 8728), (62, 8740), (63, 8749), (64, 8785), (66, 8818), (67, 8854), (68, 8950), (71, 9001), (72, 9004), (76, 9184), (80, 9235), (81, 9253), (82, 9256),

Gene: Prospero_13 Start: 7282, Stop: 9279, Start Num: 1

Candidate Starts for Prospero_13:

(Start: 1 @7282 has 40 MA's), (3, 7300), (4, 7402), (5, 7429), (6, 7459), (7, 7501), (8, 7588), (9, 7597), (11, 7621), (12, 7627), (13, 7633), (15, 7684), (16, 7693), (18, 7738), (22, 7834), (23, 7876), (24, 7885), (27, 8017), (28, 8047), (29, 8077), (31, 8086), (32, 8110), (35, 8182), (36, 8188), (38, 8206), (39, 8230), (40, 8233), (41, 8254), (42, 8266), (43, 8284), (45, 8335), (46, 8338), (49, 8467), (53, 8587), (55, 8623), (58, 8674), (59, 8686), (61, 8728), (62, 8740), (63, 8749), (64, 8785), (66, 8818), (67, 8854), (68, 8950), (71, 9001), (72, 9004), (76, 9184), (80, 9235), (81, 9253), (82, 9256),

Gene: Ronnie_13 Start: 7282, Stop: 9279, Start Num: 1

Candidate Starts for Ronnie_13:

(Start: 1 @7282 has 40 MA's), (3, 7300), (4, 7402), (5, 7429), (6, 7459), (7, 7501), (8, 7588), (9, 7597), (11, 7621), (12, 7627), (13, 7633), (15, 7684), (16, 7693), (18, 7738), (22, 7834), (23, 7876), (24, 7885), (27, 8017), (28, 8047), (29, 8077), (31, 8086), (32, 8110), (35, 8182), (36, 8188), (38, 8206), (39, 8230), (40, 8233), (41, 8254), (42, 8266), (43, 8284), (45, 8335), (46, 8338), (49, 8467), (53, 8587), (55, 8623), (58, 8674), (59, 8686), (61, 8728), (62, 8740), (63, 8749), (64, 8785), (66, 8818), (67, 8854), (68, 8950), (71, 9001), (72, 9004), (76, 9184), (80, 9235), (81, 9253), (82, 9256),

Gene: Sandman_13 Start: 7356, Stop: 9353, Start Num: 1

Candidate Starts for Sandman_13:

(Start: 1 @7356 has 40 MA's), (3, 7374), (4, 7476), (5, 7503), (6, 7533), (7, 7575), (8, 7662), (9, 7671), (11, 7695), (12, 7701), (13, 7707), (15, 7758), (16, 7767), (18, 7812), (22, 7908), (23, 7950), (24, 7959), (27, 8091), (28, 8121), (29, 8151), (31, 8160), (32, 8184), (35, 8256), (36, 8262), (38, 8280), (39, 8304), (40, 8307), (41, 8328), (42, 8340), (43, 8358), (45, 8409), (46, 8412), (49, 8541), (53, 8661), (55, 8697), (58, 8748), (59, 8760), (61, 8802), (62, 8814), (63, 8823), (64, 8859), (66, 8892), (67, 8928), (68, 9024), (71, 9075), (72, 9078), (76, 9258), (80, 9309), (81, 9327), (82, 9330),

Gene: Saphira_14 Start: 7280, Stop: 9277, Start Num: 1

Candidate Starts for Saphira_14:

(Start: 1 @7280 has 40 MA's), (3, 7298), (4, 7400), (6, 7457), (7, 7499), (8, 7586), (9, 7595), (11, 7619), (12, 7625), (13, 7631), (15, 7682), (16, 7691), (17, 7718), (18, 7736), (22, 7832), (23, 7874), (24, 7883), (26, 8000), (27, 8015), (28, 8045), (30, 8078), (31, 8084), (32, 8108), (33, 8123), (35, 8180), (36, 8186), (38, 8204), (41, 8252), (42, 8264), (43, 8282), (45, 8333), (46, 8336), (47, 8345), (48, 8432), (49, 8465), (52, 8552), (53, 8585), (55, 8621), (56, 8630), (57, 8639), (59, 8684), (60, 8708), (62, 8738), (63, 8747), (64, 8783), (65, 8792), (66, 8816), (67, 8852), (68, 8948), (71, 8999), (80, 9233), (82, 9254),

Gene: SerialPhiller_11 Start: 6936, Stop: 8759, Start Num: 1

Candidate Starts for SerialPhiller_11:

(Start: 1 @6936 has 40 MA's), (4, 7056), (6, 7113), (7, 7155), (8, 7242), (9, 7251), (10, 7266), (11, 7275), (12, 7281), (13, 7287), (16, 7347), (19, 7395), (20, 7431), (21, 7473), (23, 7530), (24, 7539), (25, 7647), (27, 7671), (29, 7731), (32, 7764), (35, 7836), (36, 7842), (38, 7860), (41, 7908), (44, 7980), (46, 7992), (50, 8088), (51, 8103), (52, 8124), (53, 8145), (54, 8166), (55, 8178), (66, 8298), (69, 8439), (70, 8472), (74, 8523), (75, 8595), (77, 8673),

Gene: Seume_13 Start: 7077, Stop: 9074, Start Num: 1

Candidate Starts for Seume_13:

(Start: 1 @7077 has 40 MA's), (3, 7095), (4, 7197), (5, 7224), (6, 7254), (7, 7296), (8, 7383), (9, 7392), (11, 7416), (13, 7428), (16, 7488), (18, 7533), (22, 7629), (23, 7671), (24, 7680), (27, 7812), (28, 7842), (29, 7872), (31, 7881), (32, 7905), (35, 7977), (36, 7983), (37, 7986), (38, 8001), (39, 8025), (40, 8028), (41, 8049), (42, 8061), (43, 8079), (45, 8130), (46, 8133), (49, 8262), (53, 8382), (55, 8418), (58, 8469), (59, 8481), (61, 8523), (62, 8535), (63, 8544), (64, 8580), (66, 8613), (67, 8649), (68, 8745), (71, 8796), (72, 8799), (76, 8979), (80, 9030), (81, 9048), (82, 9051),

Gene: Sourignavong_14 Start: 7383, Stop: 9380, Start Num: 2

Candidate Starts for Sourignavong_14:

(Start: 2 @7383 has 1 MA's), (3, 7401), (4, 7503), (5, 7530), (6, 7560), (7, 7602), (8, 7689), (9, 7698), (11, 7722), (12, 7728), (13, 7734), (14, 7743), (15, 7785), (16, 7794), (18, 7839), (22, 7935), (23, 7977), (24, 7986), (27, 8118), (28, 8148), (29, 8178), (31, 8187), (35, 8283), (36, 8289), (38, 8307), (40, 8334), (41, 8355), (42, 8367), (43, 8385), (45, 8436), (46, 8439), (47, 8448), (49, 8568), (52, 8655), (53, 8688), (55, 8724), (58, 8775), (59, 8787), (61, 8829), (62, 8841), (63, 8850), (64, 8886), (66, 8919), (67, 8955), (68, 9051), (71, 9102), (72, 9105), (76, 9285), (80, 9336), (81, 9354), (82, 9357),

Gene: StewieGriff_13 Start: 7279, Stop: 9276, Start Num: 1

Candidate Starts for StewieGriff_13:

(Start: 1 @7279 has 40 MA's), (3, 7297), (4, 7399), (6, 7456), (7, 7498), (8, 7585), (9, 7594), (11, 7618), (12, 7624), (13, 7630), (15, 7681), (16, 7690), (17, 7717), (18, 7735), (22, 7831), (23, 7873), (24, 7882), (26, 7999), (27, 8014), (28, 8044), (30, 8077), (31, 8083), (32, 8107), (35, 8179), (36, 8185), (38, 8203), (41, 8251), (42, 8263), (45, 8332), (46, 8335), (47, 8344), (48, 8431), (49, 8464), (52, 8551), (53, 8584), (55, 8620), (56, 8629), (57, 8638), (59, 8683), (60, 8707), (62, 8737), (63, 8746), (64, 8782), (65, 8791), (66, 8815), (67, 8851), (68, 8947), (69, 8956), (71, 8998), (76, 9181), (79, 9223), (80, 9232), (82, 9253),

Gene: Stratus_13 Start: 7356, Stop: 9353, Start Num: 1

Candidate Starts for Stratus_13:

(Start: 1 @7356 has 40 MA's), (3, 7374), (4, 7476), (5, 7503), (6, 7533), (7, 7575), (8, 7662), (9, 7671), (11, 7695), (12, 7701), (13, 7707), (15, 7758), (16, 7767), (18, 7812), (22, 7908), (23, 7950), (24, 7959), (27, 8091), (28, 8121), (29, 8151), (31, 8160), (32, 8184), (35, 8256), (36, 8262), (38, 8280), (39, 8304), (40, 8307), (41, 8328), (42, 8340), (43, 8358), (45, 8409), (46, 8412), (49, 8541), (53, 8661), (55, 8697), (58, 8748), (59, 8760), (61, 8802), (62, 8814), (63, 8823), (64, 8859), (66, 8892), (67, 8928), (68, 9024), (71, 9075), (72, 9078), (76, 9258), (80, 9309), (81, 9327), (82, 9330),

Gene: Swenson_13 Start: 7403, Stop: 9400, Start Num: 1

Candidate Starts for Swenson_13:

(Start: 1 @7403 has 40 MA's), (3, 7421), (4, 7523), (6, 7580), (7, 7622), (8, 7709), (9, 7718), (11, 7742), (13, 7754), (15, 7805), (16, 7814), (18, 7859), (22, 7955), (23, 7997), (27, 8138), (28, 8168), (29, 8198), (31, 8207), (32, 8231), (35, 8303), (36, 8309), (38, 8327), (41, 8375), (42, 8387), (43, 8405), (45, 8456), (46, 8459), (47, 8468), (48, 8555), (49, 8588), (52, 8675), (53, 8708), (55, 8744), (58, 8795), (59, 8807), (60, 8831), (62, 8861), (63, 8870), (64, 8906), (66, 8939), (67, 8975), (68, 9071), (71, 9122), (76, 9305), (78, 9344), (82, 9377),

Gene: Taj14_13 Start: 7259, Stop: 9256, Start Num: 1

Candidate Starts for Taj14_13:

(Start: 1 @7259 has 40 MA's), (3, 7277), (4, 7379), (6, 7436), (7, 7478), (8, 7565), (9, 7574), (11, 7598), (12, 7604), (13, 7610), (15, 7661), (16, 7670), (17, 7697), (18, 7715), (22, 7811), (23, 7853), (24, 7862), (26, 7979), (27, 7994), (28, 8024), (30, 8057), (31, 8063), (32, 8087), (33, 8102), (35, 8159), (36, 8165), (38, 8183), (41, 8231), (42, 8243), (43, 8261), (45, 8312), (46, 8315), (47, 8324), (48, 8411), (49, 8444), (52, 8531), (53, 8564), (55, 8600), (56, 8609), (57, 8618), (59, 8663), (60, 8687), (62, 8717), (63, 8726), (64, 8762), (65, 8771), (66, 8795), (67, 8831), (68, 8927), (71, 8978), (78, 9200), (80, 9212), (82, 9233),

Gene: TinoCrisci_13 Start: 7282, Stop: 9279, Start Num: 1

Candidate Starts for TinoCrisci_13:

(Start: 1 @7282 has 40 MA's), (3, 7300), (4, 7402), (5, 7429), (6, 7459), (7, 7501), (8, 7588), (9, 7597), (11, 7621), (12, 7627), (13, 7633), (15, 7684), (16, 7693), (18, 7738), (22, 7834), (23, 7876), (24, 7885), (27, 8017), (28, 8047), (29, 8077), (31, 8086), (32, 8110), (34, 8173), (35, 8182), (36, 8188), (38, 8206), (39, 8230), (40, 8233), (41, 8254), (42, 8266), (43, 8284), (45, 8335), (46, 8338), (49, 8467), (53, 8587), (55, 8623), (58, 8674), (59, 8686), (61, 8728), (62, 8740), (63, 8749), (64, 8785), (66, 8818), (67, 8854), (68, 8950), (71, 9001), (72, 9004), (76, 9184), (80, 9235), (81, 9253), (82, 9256),

Gene: Toulouse_12 Start: 7077, Stop: 9074, Start Num: 1

Candidate Starts for Toulouse_12:

(Start: 1 @7077 has 40 MA's), (3, 7095), (4, 7197), (5, 7224), (6, 7254), (7, 7296), (8, 7383), (9, 7392), (11, 7416), (13, 7428), (16, 7488), (18, 7533), (22, 7629), (23, 7671), (24, 7680), (27, 7812), (28, 7842), (29, 7872), (31, 7881), (32, 7905), (35, 7977), (36, 7983), (37, 7986), (38, 8001), (39, 8025), (40, 8028), (41, 8049), (42, 8061), (43, 8079), (45, 8130), (46, 8133), (49, 8262), (53, 8382), (55, 8418), (58, 8469), (59, 8481), (61, 8523), (62, 8535), (63, 8544), (64, 8580), (66, 8613), (67, 8649), (68, 8745), (71, 8796), (72, 8799), (76, 8979), (80, 9030), (81, 9048), (82, 9051),

Gene: TymAbreu_13 Start: 7282, Stop: 9279, Start Num: 1

Candidate Starts for TymAbreu_13:

(Start: 1 @7282 has 40 MA's), (3, 7300), (4, 7402), (5, 7429), (6, 7459), (7, 7501), (8, 7588), (9, 7597), (11, 7621), (12, 7627), (13, 7633), (15, 7684), (16, 7693), (18, 7738), (22, 7834), (23, 7876), (24, 7885), (27, 8017), (28, 8047), (29, 8077), (31, 8086), (32, 8110), (35, 8182), (36, 8188), (38, 8206), (39, 8230), (40, 8233), (41, 8254), (42, 8266), (43, 8284), (45, 8335), (46, 8338), (49, 8467), (53, 8587), (55, 8623), (58, 8674), (59, 8686), (61, 8728), (62, 8740), (63, 8749), (64, 8785), (66, 8818), (67, 8854), (68, 8950), (71, 9001), (72, 9004), (76, 9184), (80, 9235), (81, 9253), (82, 9256),

Gene: Yank_13 Start: 7282, Stop: 9279, Start Num: 1

Candidate Starts for Yank_13:

(Start: 1 @7282 has 40 MA's), (3, 7300), (4, 7402), (5, 7429), (6, 7459), (7, 7501), (8, 7588), (9, 7597), (11, 7621), (13, 7633), (15, 7684), (16, 7693), (18, 7738), (22, 7834), (23, 7876), (27, 8017), (28, 8047), (29, 8077), (31, 8086), (32, 8110), (35, 8182), (36, 8188), (38, 8206), (39, 8230), (40, 8233), (41, 8254), (42, 8266), (43, 8284), (45, 8335), (46, 8338), (47, 8347), (49, 8467), (52, 8554), (53, 8587), (55, 8623), (58, 8674), (59, 8686), (61, 8728), (62, 8740), (63, 8749), (64, 8785), (66, 8818), (67, 8854), (68, 8950), (71, 9001), (72, 9004), (76, 9184), (80, 9235), (81, 9253), (82, 9256),