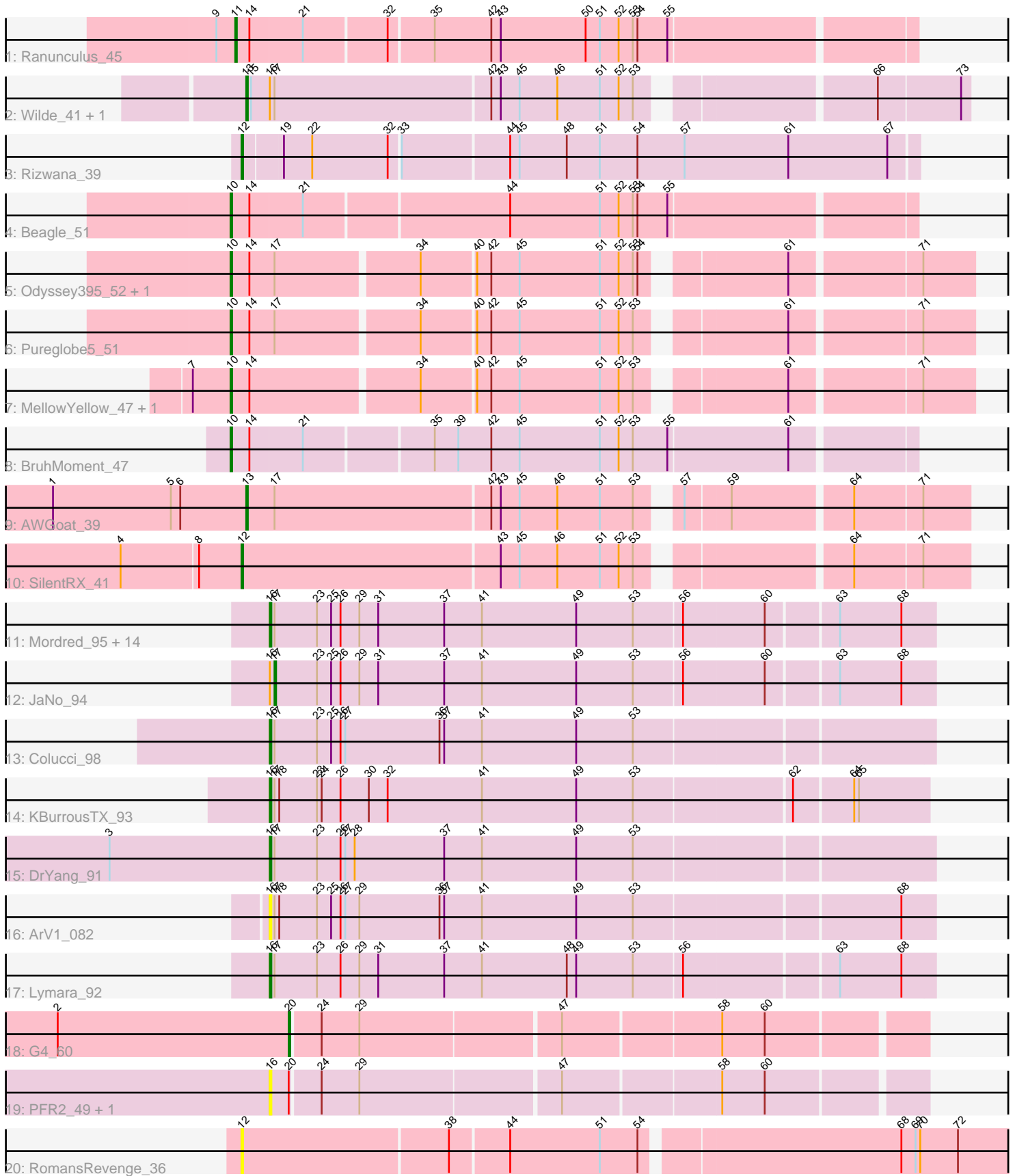


Pham 196672



Note: Tracks are now grouped by subcluster and scaled. Switching in subcluster is indicated by changes in track color. Track scale is now set by default to display the region 30 bp upstream of start 1 to 30 bp downstream of the last possible start. If this default region is judged to be packed too tightly with annotated starts, the track will be further scaled to only show that region of the ORF with annotated starts. This action will be indicated by adding "Zoomed" to the title. For starts, yellow indicates the location of called starts comprised solely of Glimmer/GeneMark auto-annotations, green indicates the location of called starts with at least 1 manual gene annotation.

Pham 196672 Report

This analysis was run 12/09/24 on database version 580.

Pham number 196672 has 38 members, 6 are drafts.

Phages represented in each track:

- Track 1 : Ranunculus_45
- Track 2 : Wilde_41, Tank_41
- Track 3 : Rizwana_39
- Track 4 : Beagle_51
- Track 5 : Odyssey395_52, Pointis_49
- Track 6 : Pureglobe5_51
- Track 7 : MellowYellow_47, NyleyClemson_46
- Track 8 : BruhMoment_47
- Track 9 : AWGoat_39
- Track 10 : SilentRX_41
- Track 11 : Mordred_95, HumptyDumpty_95, PrincessTrina_96, JayCookie_95, Chubster_95, RosiePosie_95, Conboy_93, EdgarPoe_94, Linus_95, Tophat_96, Chocolat_95, MoyaNatalis_94, Kabreeze_95, Chipper1996_960, Scavito_96
- Track 12 : JaNo_94
- Track 13 : Colucci_98
- Track 14 : KBurrousTX_93
- Track 15 : DrYang_91
- Track 16 : ArV1_082
- Track 17 : Lymara_92
- Track 18 : G4_60
- Track 19 : PFR2_49, PFR1_47
- Track 20 : RomansRevenge_36

Summary of Final Annotations (See graph section above for start numbers):

The start number called the most often in the published annotations is 16, it was called in 18 of the 32 non-draft genes in the pham.

Genes that call this "Most Annotated" start:

- ArV1_082, Chipper1996_960, Chocolat_95, Chubster_95, Colucci_98, Conboy_93, DrYang_91, EdgarPoe_94, HumptyDumpty_95, JayCookie_95, KBurrousTX_93, Kabreeze_95, Linus_95, Lymara_92, Mordred_95, MoyaNatalis_94, PFR1_47, PFR2_49, PrincessTrina_96, RosiePosie_95, Scavito_96, Tophat_96,

Genes that have the "Most Annotated" start but do not call it:

- JaNo_94, Tank_41, Wilde_41,

Genes that do not have the "Most Annotated" start:

- AWGoat_39, Beagle_51, BruhMoment_47, G4_60, MellowYellow_47, NyleyClemson_46, Odyssey395_52, Pointis_49, Pureglobe5_51, Ranunculus_45, Rizwana_39, RomansRevenge_36, SilentRX_41,

Summary by start number:

Start 10:

- Found in 7 of 38 (18.4%) of genes in pham
- Manual Annotations of this start: 6 of 32
- Called 100.0% of time when present
- Phage (with cluster) where this start called: Beagle_51 (AP2), BruhMoment_47 (AP3), MellowYellow_47 (AP2), NyleyClemson_46 (AP2), Odyssey395_52 (AP2), Pointis_49 (AP2), Pureglobe5_51 (AP2),

Start 11:

- Found in 1 of 38 (2.6%) of genes in pham
- Manual Annotations of this start: 1 of 32
- Called 100.0% of time when present
- Phage (with cluster) where this start called: Ranunculus_45 (AP),

Start 12:

- Found in 3 of 38 (7.9%) of genes in pham
- Manual Annotations of this start: 2 of 32
- Called 100.0% of time when present
- Phage (with cluster) where this start called: Rizwana_39 (AP1), RomansRevenge_36 (singleton), SilentRX_41 (AP4),

Start 13:

- Found in 3 of 38 (7.9%) of genes in pham
- Manual Annotations of this start: 3 of 32
- Called 100.0% of time when present
- Phage (with cluster) where this start called: AWGoat_39 (AP4), Tank_41 (AP1), Wilde_41 (AP1),

Start 16:

- Found in 25 of 38 (65.8%) of genes in pham
- Manual Annotations of this start: 18 of 32
- Called 88.0% of time when present
- Phage (with cluster) where this start called: ArV1_082 (AR), Chipper1996_960 (AR), Chocolat_95 (AR), Chubster_95 (AR), Colucci_98 (AR), Conboy_93 (AR), DrYang_91 (AR), EdgarPoe_94 (AR), HumptyDumpty_95 (AR), JayCookie_95 (AR), KBurrousTX_93 (AR), Kabreeze_95 (AR), Linus_95 (AR), Lymara_92 (AR), Mordred_95 (AR), MoyaNatalis_94 (AR), PFR1_47 (BX), PFR2_49 (BX), PrincessTrina_96 (AR), RosiePosie_95 (AR), Scavito_96 (AR), Tophat_96 (AR),

Start 17:

- Found in 27 of 38 (71.1%) of genes in pham
- Manual Annotations of this start: 1 of 32
- Called 3.7% of time when present

- Phage (with cluster) where this start called: JaNo_94 (AR),

Start 20:

- Found in 3 of 38 (7.9%) of genes in pham
- Manual Annotations of this start: 1 of 32
- Called 33.3% of time when present
- Phage (with cluster) where this start called: G4_60 (BW),

Summary by clusters:

There are 9 clusters represented in this pham: singleton, AP2, AP3, AP1, AP4, BW, AP, AR, BX,

Info for manual annotations of cluster AP:

- Start number 11 was manually annotated 1 time for cluster AP.

Info for manual annotations of cluster AP1:

- Start number 12 was manually annotated 1 time for cluster AP1.
- Start number 13 was manually annotated 2 times for cluster AP1.

Info for manual annotations of cluster AP2:

- Start number 10 was manually annotated 5 times for cluster AP2.

Info for manual annotations of cluster AP3:

- Start number 10 was manually annotated 1 time for cluster AP3.

Info for manual annotations of cluster AP4:

- Start number 12 was manually annotated 1 time for cluster AP4.
- Start number 13 was manually annotated 1 time for cluster AP4.

Info for manual annotations of cluster AR:

- Start number 16 was manually annotated 18 times for cluster AR.
- Start number 17 was manually annotated 1 time for cluster AR.

Info for manual annotations of cluster BW:

- Start number 20 was manually annotated 1 time for cluster BW.

Gene Information:

Gene: AWGoat_39 Start: 35301, Stop: 34870, Start Num: 13

Candidate Starts for AWGoat_39:

(1, 35424), (5, 35349), (6, 35343), (Start: 13 @35301 has 3 MA's), (Start: 17 @35283 has 1 MA's), (42, 35148), (43, 35142), (45, 35130), (46, 35106), (51, 35079), (53, 35058), (57, 35040), (59, 35013), (64, 34941), (71, 34899),

Gene: ArV1_082 Start: 60520, Stop: 60933, Start Num: 16

Candidate Starts for ArV1_082:

(Start: 16 @60520 has 18 MA's), (Start: 17 @60523 has 1 MA's), (18, 60526), (23, 60550), (25, 60559), (26, 60565), (27, 60568), (29, 60577), (36, 60628), (37, 60631), (41, 60655), (49, 60715), (53, 60751), (68, 60913),

Gene: Beagle_51 Start: 38228, Stop: 37809, Start Num: 10

Candidate Starts for Beagle_51:

(Start: 10 @38228 has 6 MA's), (14, 38216), (21, 38183), (44, 38057), (51, 38000), (52, 37988), (53, 37979), (54, 37976), (55, 37958),

Gene: BruhMoment_47 Start: 39339, Stop: 38920, Start Num: 10

Candidate Starts for BruhMoment_47:

(Start: 10 @39339 has 6 MA's), (14, 39327), (21, 39294), (35, 39216), (39, 39201), (42, 39180), (45, 39162), (51, 39111), (52, 39099), (53, 39090), (55, 39069), (61, 38994),

Gene: Chipper1996_960 Start: 62228, Stop: 62641, Start Num: 16

Candidate Starts for Chipper1996_960:

(Start: 16 @62228 has 18 MA's), (Start: 17 @62231 has 1 MA's), (23, 62258), (25, 62267), (26, 62273), (29, 62285), (31, 62297), (37, 62339), (41, 62363), (49, 62423), (53, 62459), (56, 62489), (60, 62540), (63, 62582), (68, 62621),

Gene: Chocolat_95 Start: 61935, Stop: 62348, Start Num: 16

Candidate Starts for Chocolat_95:

(Start: 16 @61935 has 18 MA's), (Start: 17 @61938 has 1 MA's), (23, 61965), (25, 61974), (26, 61980), (29, 61992), (31, 62004), (37, 62046), (41, 62070), (49, 62130), (53, 62166), (56, 62196), (60, 62247), (63, 62289), (68, 62328),

Gene: Chubster_95 Start: 62175, Stop: 62588, Start Num: 16

Candidate Starts for Chubster_95:

(Start: 16 @62175 has 18 MA's), (Start: 17 @62178 has 1 MA's), (23, 62205), (25, 62214), (26, 62220), (29, 62232), (31, 62244), (37, 62286), (41, 62310), (49, 62370), (53, 62406), (56, 62436), (60, 62487), (63, 62529), (68, 62568),

Gene: Colucci_98 Start: 62563, Stop: 62976, Start Num: 16

Candidate Starts for Colucci_98:

(Start: 16 @62563 has 18 MA's), (Start: 17 @62566 has 1 MA's), (23, 62593), (25, 62602), (26, 62608), (27, 62611), (36, 62671), (37, 62674), (41, 62698), (49, 62758), (53, 62794),

Gene: Conboy_93 Start: 61684, Stop: 62097, Start Num: 16

Candidate Starts for Conboy_93:

(Start: 16 @61684 has 18 MA's), (Start: 17 @61687 has 1 MA's), (23, 61714), (25, 61723), (26, 61729), (29, 61741), (31, 61753), (37, 61795), (41, 61819), (49, 61879), (53, 61915), (56, 61945), (60, 61996), (63, 62038), (68, 62077),

Gene: DrYang_91 Start: 61721, Stop: 62134, Start Num: 16

Candidate Starts for DrYang_91:

(3, 61619), (Start: 16 @61721 has 18 MA's), (Start: 17 @61724 has 1 MA's), (23, 61751), (26, 61766), (27, 61769), (28, 61775), (37, 61832), (41, 61856), (49, 61916), (53, 61952),

Gene: EdgarPoe_94 Start: 62092, Stop: 62505, Start Num: 16

Candidate Starts for EdgarPoe_94:

(Start: 16 @62092 has 18 MA's), (Start: 17 @62095 has 1 MA's), (23, 62122), (25, 62131), (26, 62137), (29, 62149), (31, 62161), (37, 62203), (41, 62227), (49, 62287), (53, 62323), (56, 62353), (60, 62404), (63, 62446), (68, 62485),

Gene: G4_60 Start: 34029, Stop: 34412, Start Num: 20

Candidate Starts for G4_60:

(2, 33882), (Start: 20 @34029 has 1 MA's), (24, 34047), (29, 34071), (47, 34194), (58, 34290), (60, 34317),

Gene: HumptyDumpty_95 Start: 61895, Stop: 62308, Start Num: 16

Candidate Starts for HumptyDumpty_95:

(Start: 16 @61895 has 18 MA's), (Start: 17 @61898 has 1 MA's), (23, 61925), (25, 61934), (26, 61940), (29, 61952), (31, 61964), (37, 62006), (41, 62030), (49, 62090), (53, 62126), (56, 62156), (60, 62207), (63, 62249), (68, 62288),

Gene: JaNo_94 Start: 61869, Stop: 62279, Start Num: 17

Candidate Starts for JaNo_94:

(Start: 16 @61866 has 18 MA's), (Start: 17 @61869 has 1 MA's), (23, 61896), (25, 61905), (26, 61911), (29, 61923), (31, 61935), (37, 61977), (41, 62001), (49, 62061), (53, 62097), (56, 62127), (60, 62178), (63, 62220), (68, 62259),

Gene: JayCookie_95 Start: 62428, Stop: 62841, Start Num: 16

Candidate Starts for JayCookie_95:

(Start: 16 @62428 has 18 MA's), (Start: 17 @62431 has 1 MA's), (23, 62458), (25, 62467), (26, 62473), (29, 62485), (31, 62497), (37, 62539), (41, 62563), (49, 62623), (53, 62659), (56, 62689), (60, 62740), (63, 62782), (68, 62821),

Gene: KBurrousTX_93 Start: 63304, Stop: 63714, Start Num: 16

Candidate Starts for KBurrousTX_93:

(Start: 16 @63304 has 18 MA's), (Start: 17 @63307 has 1 MA's), (18, 63310), (23, 63334), (24, 63337), (26, 63349), (30, 63367), (32, 63379), (41, 63439), (49, 63499), (53, 63535), (62, 63631), (64, 63667), (65, 63670),

Gene: Kabreeze_95 Start: 61952, Stop: 62365, Start Num: 16

Candidate Starts for Kabreeze_95:

(Start: 16 @61952 has 18 MA's), (Start: 17 @61955 has 1 MA's), (23, 61982), (25, 61991), (26, 61997), (29, 62009), (31, 62021), (37, 62063), (41, 62087), (49, 62147), (53, 62183), (56, 62213), (60, 62264), (63, 62306), (68, 62345),

Gene: Linus_95 Start: 62400, Stop: 62813, Start Num: 16

Candidate Starts for Linus_95:

(Start: 16 @62400 has 18 MA's), (Start: 17 @62403 has 1 MA's), (23, 62430), (25, 62439), (26, 62445), (29, 62457), (31, 62469), (37, 62511), (41, 62535), (49, 62595), (53, 62631), (56, 62661), (60, 62712), (63, 62754), (68, 62793),

Gene: Lymara_92 Start: 60859, Stop: 61272, Start Num: 16

Candidate Starts for Lymara_92:

(Start: 16 @60859 has 18 MA's), (Start: 17 @60862 has 1 MA's), (23, 60889), (26, 60904), (29, 60916), (31, 60928), (37, 60970), (41, 60994), (48, 61048), (49, 61054), (53, 61090), (56, 61120), (63, 61213), (68, 61252),

Gene: MellowYellow_47 Start: 36986, Stop: 36549, Start Num: 10

Candidate Starts for MellowYellow_47:

(7, 37010), (Start: 10 @36986 has 6 MA's), (14, 36974), (34, 36872), (40, 36839), (42, 36830), (45, 36812), (51, 36761), (52, 36749), (53, 36740), (61, 36659), (71, 36581),

Gene: Mordred_95 Start: 61991, Stop: 62404, Start Num: 16

Candidate Starts for Mordred_95:

(Start: 16 @61991 has 18 MA's), (Start: 17 @61994 has 1 MA's), (23, 62021), (25, 62030), (26, 62036), (29, 62048), (31, 62060), (37, 62102), (41, 62126), (49, 62186), (53, 62222), (56, 62252), (60, 62303), (63, 62345), (68, 62384),

Gene: MoyaNatalis_94 Start: 61874, Stop: 62287, Start Num: 16

Candidate Starts for MoyaNatalis_94:

(Start: 16 @61874 has 18 MA's), (Start: 17 @61877 has 1 MA's), (23, 61904), (25, 61913), (26, 61919), (29, 61931), (31, 61943), (37, 61985), (41, 62009), (49, 62069), (53, 62105), (56, 62135), (60, 62186), (63, 62228), (68, 62267),

Gene: NyleyClemson_46 Start: 36601, Stop: 36164, Start Num: 10

Candidate Starts for NyleyClemson_46:

(7, 36625), (Start: 10 @36601 has 6 MA's), (14, 36589), (34, 36487), (40, 36454), (42, 36445), (45, 36427), (51, 36376), (52, 36364), (53, 36355), (61, 36274), (71, 36196),

Gene: Odyssey395_52 Start: 38270, Stop: 37833, Start Num: 10

Candidate Starts for Odyssey395_52:

(Start: 10 @38270 has 6 MA's), (14, 38258), (Start: 17 @38243 has 1 MA's), (34, 38156), (40, 38123), (42, 38114), (45, 38096), (51, 38045), (52, 38033), (53, 38024), (54, 38021), (61, 37943), (71, 37865),

Gene: PFR1_47 Start: 32984, Stop: 33379, Start Num: 16

Candidate Starts for PFR1_47:

(Start: 16 @32984 has 18 MA's), (Start: 20 @32996 has 1 MA's), (24, 33014), (29, 33038), (47, 33161), (58, 33257), (60, 33284),

Gene: PFR2_49 Start: 34553, Stop: 34948, Start Num: 16

Candidate Starts for PFR2_49:

(Start: 16 @34553 has 18 MA's), (Start: 20 @34565 has 1 MA's), (24, 34583), (29, 34607), (47, 34730), (58, 34826), (60, 34853),

Gene: Pointis_49 Start: 38268, Stop: 37831, Start Num: 10

Candidate Starts for Pointis_49:

(Start: 10 @38268 has 6 MA's), (14, 38256), (Start: 17 @38241 has 1 MA's), (34, 38154), (40, 38121), (42, 38112), (45, 38094), (51, 38043), (52, 38031), (53, 38022), (54, 38019), (61, 37941), (71, 37863),

Gene: PrincessTrina_96 Start: 62182, Stop: 62595, Start Num: 16

Candidate Starts for PrincessTrina_96:

(Start: 16 @62182 has 18 MA's), (Start: 17 @62185 has 1 MA's), (23, 62212), (25, 62221), (26, 62227), (29, 62239), (31, 62251), (37, 62293), (41, 62317), (49, 62377), (53, 62413), (56, 62443), (60, 62494), (63, 62536), (68, 62575),

Gene: Pureglobe5_51 Start: 38451, Stop: 38014, Start Num: 10

Candidate Starts for Pureglobe5_51:

(Start: 10 @38451 has 6 MA's), (14, 38439), (Start: 17 @38424 has 1 MA's), (34, 38337), (40, 38304), (42, 38295), (45, 38277), (51, 38226), (52, 38214), (53, 38205), (61, 38124), (71, 38046),

Gene: Ranunculus_45 Start: 40272, Stop: 39856, Start Num: 11

Candidate Starts for Ranunculus_45:

(9, 40284), (Start: 11 @40272 has 1 MA's), (14, 40263), (21, 40230), (32, 40179), (35, 40152), (42, 40116), (43, 40110), (50, 40056), (51, 40047), (52, 40035), (53, 40026), (54, 40023), (55, 40005),

Gene: Rizwana_39 Start: 36865, Stop: 36446, Start Num: 12

Candidate Starts for Rizwana_39:

(Start: 12 @36865 has 2 MA's), (19, 36841), (22, 36823), (32, 36775), (33, 36769), (44, 36703), (45, 36697), (48, 36667), (51, 36646), (54, 36622), (57, 36592), (61, 36526), (67, 36463),

Gene: RomansRevenge_36 Start: 34253, Stop: 33783, Start Num: 12

Candidate Starts for RomansRevenge_36:

(Start: 12 @34253 has 2 MA's), (38, 34124), (44, 34088), (51, 34031), (54, 34007), (68, 33851), (69, 33842), (70, 33839), (72, 33815),

Gene: RosiePosie_95 Start: 62047, Stop: 62460, Start Num: 16

Candidate Starts for RosiePosie_95:

(Start: 16 @62047 has 18 MA's), (Start: 17 @62050 has 1 MA's), (23, 62077), (25, 62086), (26, 62092), (29, 62104), (31, 62116), (37, 62158), (41, 62182), (49, 62242), (53, 62278), (56, 62308), (60, 62359), (63, 62401), (68, 62440),

Gene: Scavito_96 Start: 62040, Stop: 62453, Start Num: 16

Candidate Starts for Scavito_96:

(Start: 16 @62040 has 18 MA's), (Start: 17 @62043 has 1 MA's), (23, 62070), (25, 62079), (26, 62085), (29, 62097), (31, 62109), (37, 62151), (41, 62175), (49, 62235), (53, 62271), (56, 62301), (60, 62352), (63, 62394), (68, 62433),

Gene: SilentRX_41 Start: 36325, Stop: 35891, Start Num: 12

Candidate Starts for SilentRX_41:

(4, 36400), (8, 36352), (Start: 12 @36325 has 2 MA's), (43, 36163), (45, 36151), (46, 36127), (51, 36100), (52, 36088), (53, 36079), (64, 35962), (71, 35920),

Gene: Tank_41 Start: 36839, Stop: 36408, Start Num: 13

Candidate Starts for Tank_41:

(Start: 13 @36839 has 3 MA's), (15, 36836), (Start: 16 @36824 has 18 MA's), (Start: 17 @36821 has 1 MA's), (42, 36686), (43, 36680), (45, 36668), (46, 36644), (51, 36617), (52, 36605), (53, 36596), (66, 36464), (73, 36413),

Gene: Tophat_96 Start: 62229, Stop: 62642, Start Num: 16

Candidate Starts for Tophat_96:

(Start: 16 @62229 has 18 MA's), (Start: 17 @62232 has 1 MA's), (23, 62259), (25, 62268), (26, 62274), (29, 62286), (31, 62298), (37, 62340), (41, 62364), (49, 62424), (53, 62460), (56, 62490), (60, 62541), (63, 62583), (68, 62622),

Gene: Wilde_41 Start: 36681, Stop: 36250, Start Num: 13

Candidate Starts for Wilde_41:

(Start: 13 @36681 has 3 MA's), (15, 36678), (Start: 16 @36666 has 18 MA's), (Start: 17 @36663 has 1 MA's), (42, 36528), (43, 36522), (45, 36510), (46, 36486), (51, 36459), (52, 36447), (53, 36438), (66, 36306), (73, 36255),