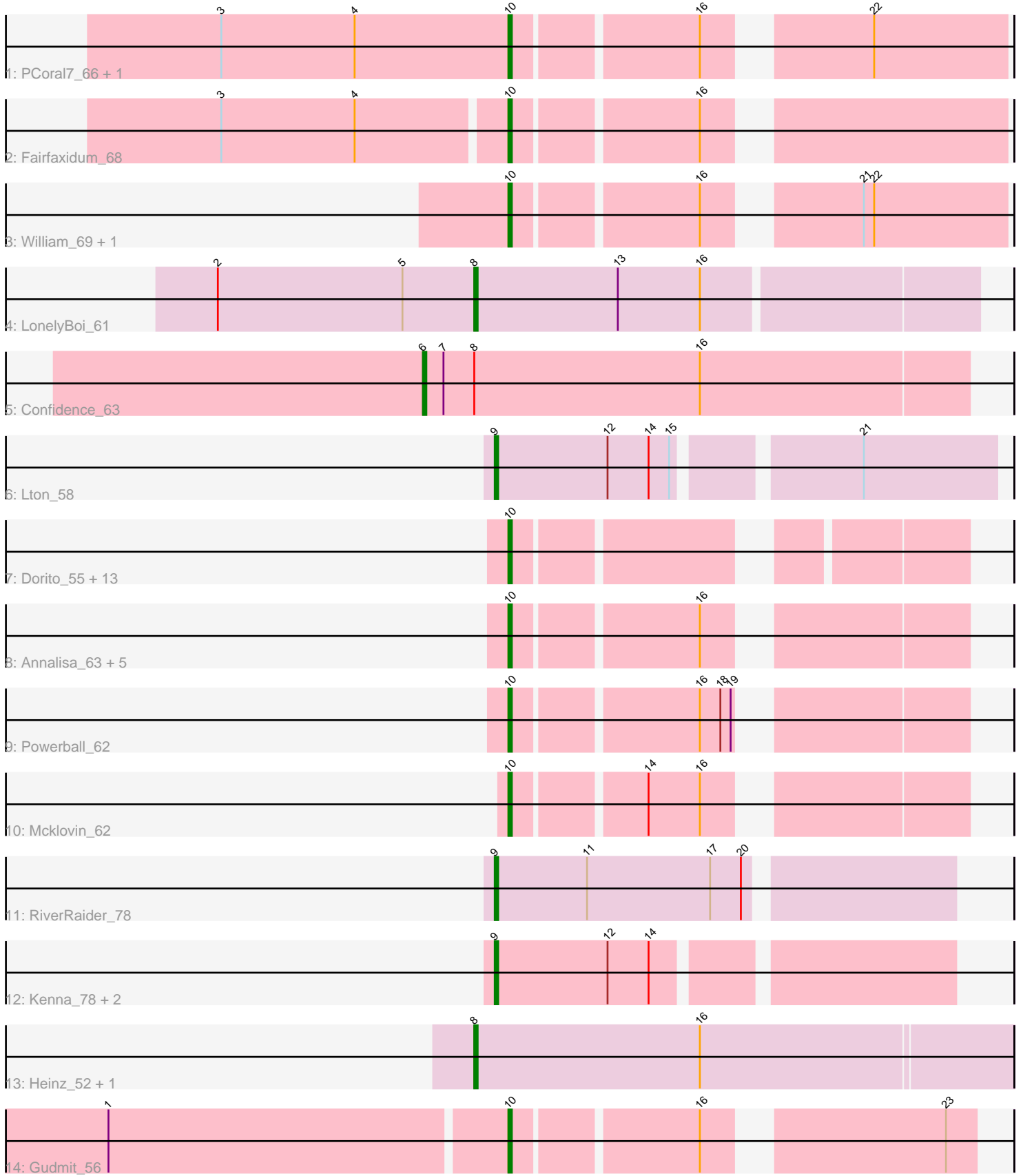


Pham 196676



Note: Tracks are now grouped by subcluster and scaled. Switching in subcluster is indicated by changes in track color. Track scale is now set by default to display the region 30 bp upstream of start 1 to 30 bp downstream of the last possible start. If this default region is judged to be packed too tightly with annotated starts, the track will be further scaled to only show that region of the ORF with annotated starts. This action will be indicated by adding "Zoomed" to the title. For starts, yellow indicates the location of called starts comprised solely of Glimmer/GeneMark auto-annotations, green indicates the location of called starts with at least 1 manual gene annotation.

Pham 196676 Report

This analysis was run 12/09/24 on database version 580.

Pham number 196676 has 37 members, 3 are drafts.

Phages represented in each track:

- Track 1 : PCoral7_66, Toast_66
- Track 2 : Fairfaxidum_68
- Track 3 : William_69, PrincePatrick_67
- Track 4 : LonelyBoi_61
- Track 5 : Confidence_63
- Track 6 : Lton_58
- Track 7 : Dorito_55, Howe_64, Dolores_62, Sekhmet_61, Thimann_64, PhriskyACE_61, Easley_59, WinkNick_62, Adora_61, MichaelScott_65, Twinkle_63, Hortense_64, Oregano_64, Shlim410_62
- Track 8 : Annalisa_63, Beenie_58, Suerte_57, DobbysSock_58, Samman98_64, Clark_63
- Track 9 : Powerball_62
- Track 10 : Mcklovin_62
- Track 11 : RiverRaider_78
- Track 12 : Kenna_78, Lutum_84, BENtherdunthat_83
- Track 13 : Heinz_52, Hibiscus_52
- Track 14 : Gudmit_56

Summary of Final Annotations (See graph section above for start numbers):

The start number called the most often in the published annotations is 10, it was called in 26 of the 34 non-draft genes in the pham.

Genes that call this "Most Annotated" start:

- Adora_61, Annalisa_63, Beenie_58, Clark_63, DobbysSock_58, Dolores_62, Dorito_55, Easley_59, Fairfaxidum_68, Gudmit_56, Hortense_64, Howe_64, Mcklovin_62, MichaelScott_65, Oregano_64, PCoral7_66, PhriskyACE_61, Powerball_62, PrincePatrick_67, Samman98_64, Sekhmet_61, Shlim410_62, Suerte_57, Thimann_64, Toast_66, Twinkle_63, William_69, WinkNick_62,

Genes that have the "Most Annotated" start but do not call it:

-

Genes that do not have the "Most Annotated" start:

- BENtherdunthat_83, Confidence_63, Heinz_52, Hibiscus_52, Kenna_78, LonelyBoi_61, Lton_58, Lutum_84, RiverRaider_78,

Summary by start number:

Start 6:

- Found in 1 of 37 (2.7%) of genes in pham
- Manual Annotations of this start: 1 of 34
- Called 100.0% of time when present
- Phage (with cluster) where this start called: Confidence_63 (CY1),

Start 8:

- Found in 4 of 37 (10.8%) of genes in pham
- Manual Annotations of this start: 2 of 34
- Called 75.0% of time when present
- Phage (with cluster) where this start called: Heinz_52 (DY), Hibiscus_52 (DY), LonelyBoi_61 (CY),

Start 9:

- Found in 5 of 37 (13.5%) of genes in pham
- Manual Annotations of this start: 5 of 34
- Called 100.0% of time when present
- Phage (with cluster) where this start called: BENtherdunthat_83 (DN1), Kenna_78 (DN1), Lton_58 (CZ), Lutum_84 (DN1), RiverRaider_78 (DE1),

Start 10:

- Found in 28 of 37 (75.7%) of genes in pham
- Manual Annotations of this start: 26 of 34
- Called 100.0% of time when present
- Phage (with cluster) where this start called: Adora_61 (CZ4), Annalisa_63 (CZ4), Beenie_58 (CZ4), Clark_63 (CZ4), DobbysSock_58 (CZ4), Dolores_62 (CZ4), Dorito_55 (CZ4), Easley_59 (CZ4), Fairfaxidum_68 (CV), Gudmit_56 (singleton), Hortense_64 (CZ4), Howe_64 (CZ4), Mcklovin_62 (CZ4), MichaelScott_65 (CZ4), Oregano_64 (CZ4), PCoral7_66 (CV), PhriskyACE_61 (CZ4), Powerball_62 (CZ4), PrincePatrick_67 (CV), Samman98_64 (CZ4), Sekhmet_61 (CZ4), Shlim410_62 (CZ4), Suerte_57 (CZ4), Thimann_64 (CZ4), Toast_66 (CV), Twinkle_63 (CZ4), William_69 (CV), WinkNick_62 (CZ4),

Summary by clusters:

There are 9 clusters represented in this pham: CY1, DE1, singleton, CZ4, CZ, CY, DN1, DY, CV,

Info for manual annotations of cluster CV:

- Start number 10 was manually annotated 5 times for cluster CV.

Info for manual annotations of cluster CY:

- Start number 8 was manually annotated 1 time for cluster CY.

Info for manual annotations of cluster CY1:

- Start number 6 was manually annotated 1 time for cluster CY1.

Info for manual annotations of cluster CZ:

- Start number 9 was manually annotated 1 time for cluster CZ.

Info for manual annotations of cluster CZ4:

- Start number 10 was manually annotated 20 times for cluster CZ4.

Info for manual annotations of cluster DE1:

- Start number 9 was manually annotated 1 time for cluster DE1.

Info for manual annotations of cluster DN1:

- Start number 9 was manually annotated 3 times for cluster DN1.

Info for manual annotations of cluster DY:

- Start number 8 was manually annotated 1 time for cluster DY.

Gene Information:

Gene: Adora_61 Start: 43146, Stop: 43259, Start Num: 10

Candidate Starts for Adora_61:

(Start: 10 @43146 has 26 MA's),

Gene: Annalisa_63 Start: 40463, Stop: 40579, Start Num: 10

Candidate Starts for Annalisa_63:

(Start: 10 @40463 has 26 MA's), (16, 40514),

Gene: BENtherdunthat_83 Start: 46733, Stop: 46858, Start Num: 9

Candidate Starts for BENtherdunthat_83:

(Start: 9 @46733 has 5 MA's), (12, 46766), (14, 46778),

Gene: Beenie_58 Start: 41191, Stop: 41307, Start Num: 10

Candidate Starts for Beenie_58:

(Start: 10 @41191 has 26 MA's), (16, 41242),

Gene: Clark_63 Start: 40954, Stop: 41070, Start Num: 10

Candidate Starts for Clark_63:

(Start: 10 @40954 has 26 MA's), (16, 41005),

Gene: Confidence_63 Start: 42119, Stop: 42277, Start Num: 6

Candidate Starts for Confidence_63:

(Start: 6 @42119 has 1 MA's), (7, 42125), (Start: 8 @42134 has 2 MA's), (16, 42200),

Gene: DobbysSock_58 Start: 40602, Stop: 40718, Start Num: 10

Candidate Starts for DobbysSock_58:

(Start: 10 @40602 has 26 MA's), (16, 40653),

Gene: Dolores_62 Start: 40290, Stop: 40403, Start Num: 10

Candidate Starts for Dolores_62:

(Start: 10 @40290 has 26 MA's),

Gene: Dorito_55 Start: 38107, Stop: 38220, Start Num: 10

Candidate Starts for Dorito_55:

(Start: 10 @38107 has 26 MA's),

Gene: Easley_59 Start: 39801, Stop: 39899, Start Num: 10

Candidate Starts for Easley_59:

(Start: 10 @39801 has 26 MA's),

Gene: Fairfaxidum_68 Start: 43559, Stop: 43687, Start Num: 10

Candidate Starts for Fairfaxidum_68:

(3, 43478), (4, 43517), (Start: 10 @43559 has 26 MA's), (16, 43610),

Gene: Gudmit_56 Start: 33859, Stop: 33978, Start Num: 10

Candidate Starts for Gudmit_56:

(1, 33745), (Start: 10 @33859 has 26 MA's), (16, 33910), (23, 33970),

Gene: Heinz_52 Start: 33427, Stop: 33582, Start Num: 8

Candidate Starts for Heinz_52:

(Start: 8 @33427 has 2 MA's), (16, 33493),

Gene: Hibiscus_52 Start: 33376, Stop: 33531, Start Num: 8

Candidate Starts for Hibiscus_52:

(Start: 8 @33376 has 2 MA's), (16, 33442),

Gene: Hortense_64 Start: 44501, Stop: 44614, Start Num: 10

Candidate Starts for Hortense_64:

(Start: 10 @44501 has 26 MA's),

Gene: Howe_64 Start: 44501, Stop: 44614, Start Num: 10

Candidate Starts for Howe_64:

(Start: 10 @44501 has 26 MA's),

Gene: Kenna_78 Start: 46006, Stop: 46131, Start Num: 9

Candidate Starts for Kenna_78:

(Start: 9 @46006 has 5 MA's), (12, 46039), (14, 46051),

Gene: LonelyBoi_61 Start: 45136, Stop: 45279, Start Num: 8

Candidate Starts for LonelyBoi_61:

(2, 45061), (5, 45115), (Start: 8 @45136 has 2 MA's), (13, 45178), (16, 45202),

Gene: Lton_58 Start: 34944, Stop: 35081, Start Num: 9

Candidate Starts for Lton_58:

(Start: 9 @34944 has 5 MA's), (12, 34977), (14, 34989), (15, 34995), (21, 35043),

Gene: Lutum_84 Start: 47168, Stop: 47293, Start Num: 9

Candidate Starts for Lutum_84:

(Start: 9 @47168 has 5 MA's), (12, 47201), (14, 47213),

Gene: Mcklovin_62 Start: 46828, Stop: 46944, Start Num: 10

Candidate Starts for Mcklovin_62:

(Start: 10 @46828 has 26 MA's), (14, 46864), (16, 46879),

Gene: MichaelScott_65 Start: 42221, Stop: 42334, Start Num: 10

Candidate Starts for MichaelScott_65:

(Start: 10 @42221 has 26 MA's),

Gene: Oregano_64 Start: 41095, Stop: 41208, Start Num: 10
Candidate Starts for Oregano_64:
(Start: 10 @41095 has 26 MA's),

Gene: PCoral7_66 Start: 42700, Stop: 42828, Start Num: 10
Candidate Starts for PCoral7_66:
(3, 42616), (4, 42655), (Start: 10 @42700 has 26 MA's), (16, 42751), (22, 42790),

Gene: PhriskyACE_61 Start: 41112, Stop: 41225, Start Num: 10
Candidate Starts for PhriskyACE_61:
(Start: 10 @41112 has 26 MA's),

Gene: Powerball_62 Start: 41218, Stop: 41334, Start Num: 10
Candidate Starts for Powerball_62:
(Start: 10 @41218 has 26 MA's), (16, 41269), (18, 41275), (19, 41278),

Gene: PrincePatrick_67 Start: 41750, Stop: 41878, Start Num: 10
Candidate Starts for PrincePatrick_67:
(Start: 10 @41750 has 26 MA's), (16, 41801), (21, 41837), (22, 41840),

Gene: RiverRaider_78 Start: 53776, Stop: 53904, Start Num: 9
Candidate Starts for RiverRaider_78:
(Start: 9 @53776 has 5 MA's), (11, 53803), (17, 53839), (20, 53848),

Gene: Samman98_64 Start: 41057, Stop: 41173, Start Num: 10
Candidate Starts for Samman98_64:
(Start: 10 @41057 has 26 MA's), (16, 41108),

Gene: Sekhmet_61 Start: 40689, Stop: 40802, Start Num: 10
Candidate Starts for Sekhmet_61:
(Start: 10 @40689 has 26 MA's),

Gene: Shlim410_62 Start: 44501, Stop: 44614, Start Num: 10
Candidate Starts for Shlim410_62:
(Start: 10 @44501 has 26 MA's),

Gene: Suerte_57 Start: 40021, Stop: 40137, Start Num: 10
Candidate Starts for Suerte_57:
(Start: 10 @40021 has 26 MA's), (16, 40072),

Gene: Thimann_64 Start: 41329, Stop: 41442, Start Num: 10
Candidate Starts for Thimann_64:
(Start: 10 @41329 has 26 MA's),

Gene: Toast_66 Start: 42700, Stop: 42828, Start Num: 10
Candidate Starts for Toast_66:
(3, 42616), (4, 42655), (Start: 10 @42700 has 26 MA's), (16, 42751), (22, 42790),

Gene: Twinkle_63 Start: 45560, Stop: 45673, Start Num: 10
Candidate Starts for Twinkle_63:
(Start: 10 @45560 has 26 MA's),

Gene: William_69 Start: 44098, Stop: 44226, Start Num: 10

Candidate Starts for William_69:

(Start: 10 @44098 has 26 MA's), (16, 44149), (21, 44185), (22, 44188),

Gene: WinkNick_62 Start: 40213, Stop: 40326, Start Num: 10

Candidate Starts for WinkNick_62:

(Start: 10 @40213 has 26 MA's),