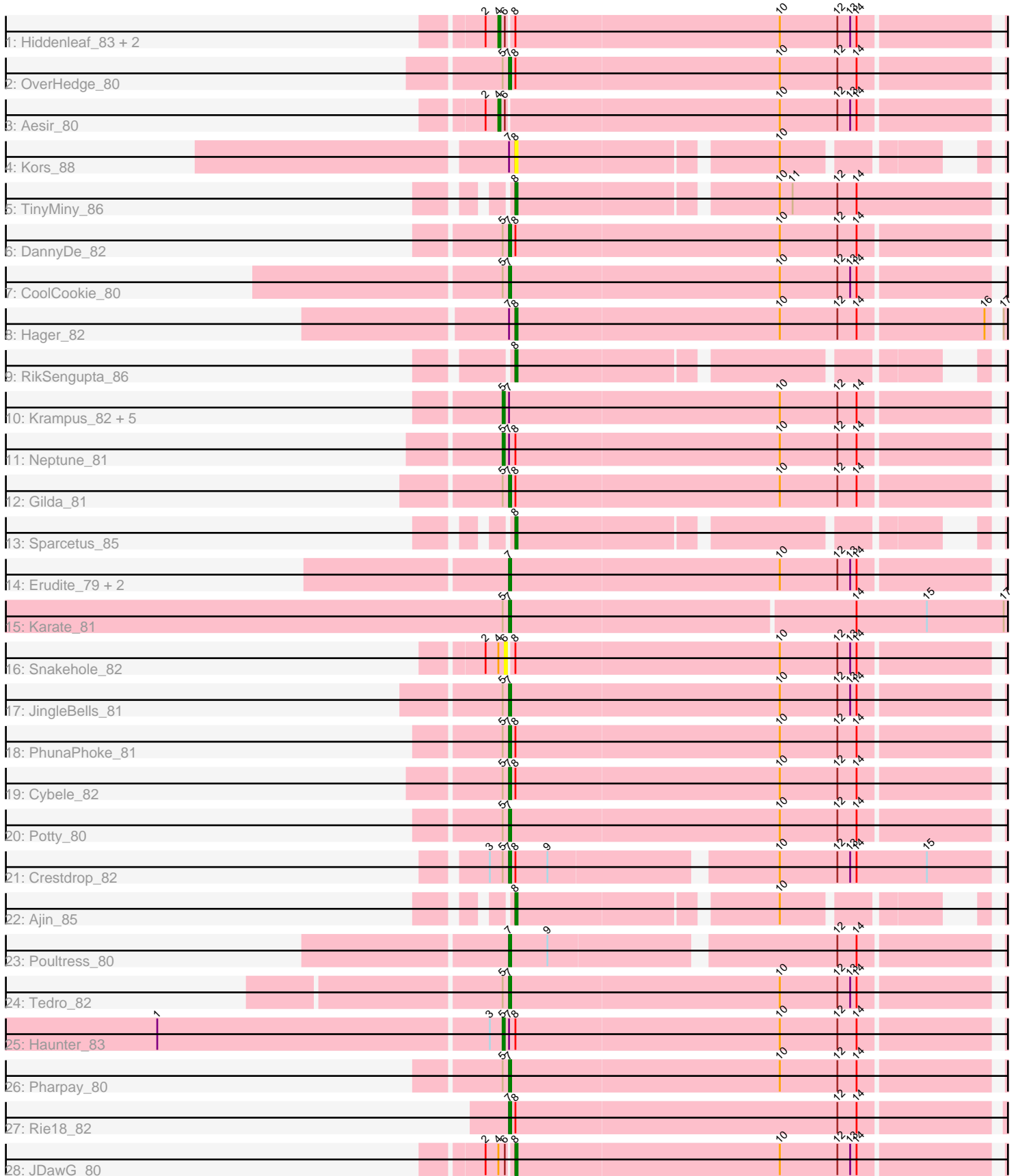


Zoomed Pham 196679



Note: Tracks are now grouped by subcluster and scaled. Switching in subcluster is indicated by changes in track color. Track scale is now set by default to display the region 30 bp upstream of start 1 to 30 bp downstream of the last possible start. If this default region is judged to be packed too tightly with annotated starts, the track will be further scaled to only show that region of the ORF with annotated starts. This action will be indicated by adding "Zoomed" to the title. For starts, yellow indicates the location of called starts comprised solely of Glimmer/GeneMark auto-annotations, green indicates the location of called starts with at least 1 manual gene annotation.

Pham 196679 Report

This analysis was run 12/09/24 on database version 580.

Pham number 196679 has 37 members, 2 are drafts.

Phages represented in each track:

- Track 1 : Hiddenleaf_83, Chivey_83, FreddieHg_83
- Track 2 : OverHedge_80
- Track 3 : Aesir_80
- Track 4 : Kors_88
- Track 5 : TinyMiny_86
- Track 6 : DannyDe_82
- Track 7 : CoolCookie_80
- Track 8 : Hager_82
- Track 9 : RikSengupta_86
- Track 10 : Krampus_82, Rachella_82, Kate_82, NarutoRun_81, Anakin_81, AnnaSerena_82
- Track 11 : Neptune_81
- Track 12 : Gilda_81
- Track 13 : Sparcetus_85
- Track 14 : Erudite_79, MortySmith_78, Dauntless_79
- Track 15 : Karate_81
- Track 16 : Snakehole_82
- Track 17 : JingleBells_81
- Track 18 : PhunaPhoke_81
- Track 19 : Cybele_82
- Track 20 : Potty_80
- Track 21 : Crestdrop_82
- Track 22 : Ajin_85
- Track 23 : Poultruss_80
- Track 24 : Tedro_82
- Track 25 : Haunter_83
- Track 26 : Pharpay_80
- Track 27 : Rie18_82
- Track 28 : JDawG_80

Summary of Final Annotations (See graph section above for start numbers):

The start number called the most often in the published annotations is 7, it was called in 17 of the 35 non-draft genes in the pham.

Genes that call this "Most Annotated" start:

- CoolCookie_80, Crestdrop_82, Cybele_82, DannyDe_82, Dauntless_79, Erudite_79, Gilda_81, JingleBells_81, Karate_81, MortySmith_78, OverHedge_80, Pharpay_80, PhunaPhoke_81, Potty_80, Poultress_80, Rie18_82, Tedro_82,

Genes that have the "Most Annotated" start but do not call it:

- Anakin_81, AnnaSerena_82, Hager_82, Haunter_83, Kate_82, Kors_88, Krampus_82, NarutoRun_81, Neptune_81, Rachella_82,

Genes that do not have the "Most Annotated" start:

- Aesir_80, Ajin_85, Chivey_83, FreddieHg_83, Hiddenleaf_83, JDawG_80, RikSengupta_86, Snakehole_82, Sparcetus_85, TinyMiny_86,

Summary by start number:

Start 4:

- Found in 6 of 37 (16.2%) of genes in pham
- Manual Annotations of this start: 4 of 35
- Called 66.7% of time when present
- Phage (with cluster) where this start called: Aesir_80 (EF), Chivey_83 (EF), FreddieHg_83 (EF), Hiddenleaf_83 (EF),

Start 5:

- Found in 20 of 37 (54.1%) of genes in pham
- Manual Annotations of this start: 8 of 35
- Called 40.0% of time when present
- Phage (with cluster) where this start called: Anakin_81 (EF), AnnaSerena_82 (EF), Haunter_83 (EF), Kate_82 (EF), Krampus_82 (EF), NarutoRun_81 (EF), Neptune_81 (EF), Rachella_82 (EF),

Start 6:

- Found in 6 of 37 (16.2%) of genes in pham
- No Manual Annotations of this start.
- Called 16.7% of time when present
- Phage (with cluster) where this start called: Snakehole_82 (EF),

Start 7:

- Found in 27 of 37 (73.0%) of genes in pham
- Manual Annotations of this start: 17 of 35
- Called 63.0% of time when present
- Phage (with cluster) where this start called: CoolCookie_80 (EF), Crestdrop_82 (EF), Cybele_82 (EF), DannyDe_82 (EF), Dauntless_79 (EF), Erudite_79 (EF), Gilda_81 (EF), JingleBells_81 (EF), Karate_81 (EF), MortySmith_78 (EF), OverHedge_80 (EF), Pharpay_80 (EF), PhunaPhoke_81 (EF), Potty_80 (EF), Poultress_80 (EF), Rie18_82 (EF), Tedro_82 (EF),

Start 8:

- Found in 20 of 37 (54.1%) of genes in pham
- Manual Annotations of this start: 6 of 35
- Called 35.0% of time when present
- Phage (with cluster) where this start called: Ajin_85 (EF), Hager_82 (EF), JDawG_80 (EF), Kors_88 (EF), RikSengupta_86 (EF), Sparcetus_85 (EF),

TinyMiny_86 (EF),

Summary by clusters:

There is one cluster represented in this pham: EF

Info for manual annotations of cluster EF:

- Start number 4 was manually annotated 4 times for cluster EF.
- Start number 5 was manually annotated 8 times for cluster EF.
- Start number 7 was manually annotated 17 times for cluster EF.
- Start number 8 was manually annotated 6 times for cluster EF.

Gene Information:

Gene: Aesir_80 Start: 54421, Stop: 55284, Start Num: 4

Candidate Starts for Aesir_80:

(2, 54415), (Start: 4 @54421 has 4 MA's), (6, 54424), (10, 54550), (12, 54577), (13, 54583), (14, 54586), (23, 54853), (26, 54892), (27, 54904), (31, 54952), (32, 54970), (33, 55003), (35, 55021), (37, 55039), (47, 55195),

Gene: Ajin_85 Start: 54988, Stop: 55917, Start Num: 8

Candidate Starts for Ajin_85:

(Start: 8 @54988 has 6 MA's), (10, 55102), (18, 55177), (20, 55237), (24, 55414), (26, 55432), (28, 55453), (29, 55456), (30, 55468), (36, 55579), (38, 55597), (40, 55660), (44, 55741), (53, 55807), (56, 55834), (57, 55858), (58, 55864),

Gene: Anakin_81 Start: 54801, Stop: 55664, Start Num: 5

Candidate Starts for Anakin_81:

(Start: 5 @54801 has 8 MA's), (Start: 7 @54804 has 17 MA's), (10, 54930), (12, 54957), (14, 54966), (26, 55272), (27, 55284), (31, 55332), (32, 55350), (33, 55383), (50, 55596),

Gene: AnnaSerena_82 Start: 54835, Stop: 55698, Start Num: 5

Candidate Starts for AnnaSerena_82:

(Start: 5 @54835 has 8 MA's), (Start: 7 @54838 has 17 MA's), (10, 54964), (12, 54991), (14, 55000), (26, 55306), (27, 55318), (31, 55366), (32, 55384), (33, 55417), (50, 55630),

Gene: Chivey_83 Start: 54223, Stop: 55083, Start Num: 4

Candidate Starts for Chivey_83:

(2, 54217), (Start: 4 @54223 has 4 MA's), (6, 54226), (Start: 8 @54229 has 6 MA's), (10, 54352), (12, 54379), (13, 54385), (14, 54388), (23, 54652), (26, 54691), (27, 54703), (31, 54751), (32, 54769), (33, 54802), (35, 54820), (37, 54838), (47, 54994),

Gene: CoolCookie_80 Start: 54925, Stop: 55782, Start Num: 7

Candidate Starts for CoolCookie_80:

(Start: 5 @54922 has 8 MA's), (Start: 7 @54925 has 17 MA's), (10, 55051), (12, 55078), (13, 55084), (14, 55087), (23, 55351), (26, 55390), (27, 55402), (31, 55450), (33, 55501), (35, 55519), (37, 55537), (47, 55693),

Gene: Crestdrop_82 Start: 54745, Stop: 55608, Start Num: 7

Candidate Starts for Crestdrop_82:

(3, 54736), (Start: 5 @54742 has 8 MA's), (Start: 7 @54745 has 17 MA's), (Start: 8 @54748 has 6 MA's), (9, 54763), (10, 54862), (12, 54889), (13, 54895), (14, 54898), (15, 54931), (19, 55000), (23, 55165), (26, 55204), (27, 55216), (31, 55264), (32, 55282), (33, 55315), (35, 55333), (37, 55351), (42, 55477), (43, 55498), (49, 55531),

Gene: Cybele_82 Start: 54825, Stop: 55685, Start Num: 7

Candidate Starts for Cybele_82:

(Start: 5 @54822 has 8 MA's), (Start: 7 @54825 has 17 MA's), (Start: 8 @54828 has 6 MA's), (10, 54951), (12, 54978), (14, 54987), (23, 55254), (26, 55293), (27, 55305), (31, 55353), (32, 55371), (33, 55404), (50, 55617),

Gene: DannyDe_82 Start: 54249, Stop: 55088, Start Num: 7

Candidate Starts for DannyDe_82:

(Start: 5 @54246 has 8 MA's), (Start: 7 @54249 has 17 MA's), (Start: 8 @54252 has 6 MA's), (10, 54375), (12, 54402), (14, 54411), (23, 54657), (26, 54696), (27, 54708), (31, 54756), (32, 54774), (33, 54807), (35, 54825), (37, 54843), (48, 55014), (50, 55020), (54, 55047),

Gene: Dauntless_79 Start: 54128, Stop: 54988, Start Num: 7

Candidate Starts for Dauntless_79:

(Start: 7 @54128 has 17 MA's), (10, 54254), (12, 54281), (13, 54287), (14, 54290), (23, 54557), (26, 54596), (27, 54608), (31, 54656), (32, 54674), (33, 54707), (35, 54725), (37, 54743), (47, 54899),

Gene: Erudite_79 Start: 54128, Stop: 54988, Start Num: 7

Candidate Starts for Erudite_79:

(Start: 7 @54128 has 17 MA's), (10, 54254), (12, 54281), (13, 54287), (14, 54290), (23, 54557), (26, 54596), (27, 54608), (31, 54656), (32, 54674), (33, 54707), (35, 54725), (37, 54743), (47, 54899),

Gene: FreddieHg_83 Start: 54240, Stop: 55100, Start Num: 4

Candidate Starts for FreddieHg_83:

(2, 54234), (Start: 4 @54240 has 4 MA's), (6, 54243), (Start: 8 @54246 has 6 MA's), (10, 54369), (12, 54396), (13, 54402), (14, 54405), (23, 54669), (26, 54708), (27, 54720), (31, 54768), (32, 54786), (33, 54819), (35, 54837), (37, 54855), (47, 55011),

Gene: Gilda_81 Start: 54832, Stop: 55692, Start Num: 7

Candidate Starts for Gilda_81:

(Start: 5 @54829 has 8 MA's), (Start: 7 @54832 has 17 MA's), (Start: 8 @54835 has 6 MA's), (10, 54958), (12, 54985), (14, 54994), (22, 55237), (26, 55300), (27, 55312), (31, 55360), (32, 55378), (33, 55411), (50, 55624),

Gene: Hager_82 Start: 53963, Stop: 54835, Start Num: 8

Candidate Starts for Hager_82:

(Start: 7 @53960 has 17 MA's), (Start: 8 @53963 has 6 MA's), (10, 54086), (12, 54113), (14, 54122), (16, 54179), (17, 54182), (23, 54386), (26, 54425), (27, 54437), (31, 54485), (32, 54503), (33, 54536), (34, 54551), (42, 54698), (49, 54752), (51, 54764),

Gene: Haunter_83 Start: 54202, Stop: 55065, Start Num: 5

Candidate Starts for Haunter_83:

(1, 54043), (3, 54196), (Start: 5 @54202 has 8 MA's), (Start: 7 @54205 has 17 MA's), (Start: 8 @54208 has 6 MA's), (10, 54331), (12, 54358), (14, 54367), (26, 54673), (27, 54685), (31, 54733), (32, 54751), (33, 54784), (50, 54997),

Gene: Hiddenleaf_83 Start: 54223, Stop: 55083, Start Num: 4

Candidate Starts for Hiddenleaf_83:

(2, 54217), (Start: 4 @54223 has 4 MA's), (6, 54226), (Start: 8 @54229 has 6 MA's), (10, 54352), (12, 54379), (13, 54385), (14, 54388), (23, 54652), (26, 54691), (27, 54703), (31, 54751), (32, 54769), (33, 54802), (35, 54820), (37, 54838), (47, 54994),

Gene: JDawG_80 Start: 54422, Stop: 55276, Start Num: 8

Candidate Starts for JDawG_80:

(2, 54410), (Start: 4 @54416 has 4 MA's), (6, 54419), (Start: 8 @54422 has 6 MA's), (10, 54545), (12, 54572), (13, 54578), (14, 54581), (23, 54845), (26, 54884), (27, 54896), (31, 54944), (32, 54962), (33, 54995), (35, 55013), (37, 55031), (47, 55187),

Gene: JingleBells_81 Start: 54352, Stop: 55215, Start Num: 7

Candidate Starts for JingleBells_81:

(Start: 5 @54349 has 8 MA's), (Start: 7 @54352 has 17 MA's), (10, 54478), (12, 54505), (13, 54511), (14, 54514), (23, 54778), (26, 54817), (27, 54829), (31, 54877), (32, 54895), (33, 54928), (35, 54946), (37, 54964), (44, 55105), (49, 55138),

Gene: Karate_81 Start: 54532, Stop: 55410, Start Num: 7

Candidate Starts for Karate_81:

(Start: 5 @54529 has 8 MA's), (Start: 7 @54532 has 17 MA's), (14, 54691), (15, 54724), (17, 54760), (21, 54895), (23, 54979), (25, 55003), (26, 55018), (27, 55030), (31, 55078), (32, 55096), (33, 55129), (35, 55147), (37, 55165), (41, 55252), (46, 55321),

Gene: Kate_82 Start: 54746, Stop: 55609, Start Num: 5

Candidate Starts for Kate_82:

(Start: 5 @54746 has 8 MA's), (Start: 7 @54749 has 17 MA's), (10, 54875), (12, 54902), (14, 54911), (26, 55217), (27, 55229), (31, 55277), (32, 55295), (33, 55328), (50, 55541),

Gene: Kors_88 Start: 55136, Stop: 56110, Start Num: 8

Candidate Starts for Kors_88:

(Start: 7 @55133 has 17 MA's), (Start: 8 @55136 has 6 MA's), (10, 55250), (18, 55325), (20, 55385), (24, 55562), (26, 55580), (28, 55601), (29, 55604), (30, 55616), (36, 55727), (38, 55745), (40, 55808), (45, 55883), (52, 55931), (53, 55943), (55, 55958), (57, 56006), (58, 56012), (60, 56036), (62, 56045), (63, 56069),

Gene: Krampus_82 Start: 54836, Stop: 55699, Start Num: 5

Candidate Starts for Krampus_82:

(Start: 5 @54836 has 8 MA's), (Start: 7 @54839 has 17 MA's), (10, 54965), (12, 54992), (14, 55001), (26, 55307), (27, 55319), (31, 55367), (32, 55385), (33, 55418), (50, 55631),

Gene: MortySmith_78 Start: 53602, Stop: 54462, Start Num: 7

Candidate Starts for MortySmith_78:

(Start: 7 @53602 has 17 MA's), (10, 53728), (12, 53755), (13, 53761), (14, 53764), (23, 54031), (26, 54070), (27, 54082), (31, 54130), (32, 54148), (33, 54181), (35, 54199), (37, 54217), (47, 54373),

Gene: NarutoRun_81 Start: 54801, Stop: 55664, Start Num: 5

Candidate Starts for NarutoRun_81:

(Start: 5 @54801 has 8 MA's), (Start: 7 @54804 has 17 MA's), (10, 54930), (12, 54957), (14, 54966), (26, 55272), (27, 55284), (31, 55332), (32, 55350), (33, 55383), (50, 55596),

Gene: Neptune_81 Start: 54822, Stop: 55685, Start Num: 5

Candidate Starts for Neptune_81:

(Start: 5 @54822 has 8 MA's), (Start: 7 @54825 has 17 MA's), (Start: 8 @54828 has 6 MA's), (10, 54951), (12, 54978), (14, 54987), (23, 55254), (26, 55293), (27, 55305), (31, 55353), (32, 55371), (33,

55404), (50, 55617),

Gene: OverHedge_80 Start: 54691, Stop: 55551, Start Num: 7

Candidate Starts for OverHedge_80:

(Start: 5 @54688 has 8 MA's), (Start: 7 @54691 has 17 MA's), (Start: 8 @54694 has 6 MA's), (10, 54817), (12, 54844), (14, 54853), (22, 55096), (26, 55159), (27, 55171), (31, 55219), (32, 55237), (33, 55270), (50, 55483),

Gene: Pharpay_80 Start: 54849, Stop: 55709, Start Num: 7

Candidate Starts for Pharpay_80:

(Start: 5 @54846 has 8 MA's), (Start: 7 @54849 has 17 MA's), (10, 54975), (12, 55002), (14, 55011), (23, 55278), (26, 55317), (27, 55329), (31, 55377), (32, 55395), (33, 55428), (50, 55641),

Gene: PhunaPhoke_81 Start: 54819, Stop: 55679, Start Num: 7

Candidate Starts for PhunaPhoke_81:

(Start: 5 @54816 has 8 MA's), (Start: 7 @54819 has 17 MA's), (Start: 8 @54822 has 6 MA's), (10, 54945), (12, 54972), (14, 54981), (22, 55224), (26, 55287), (27, 55299), (31, 55347), (32, 55365), (33, 55398), (50, 55611),

Gene: Potty_80 Start: 54749, Stop: 55609, Start Num: 7

Candidate Starts for Potty_80:

(Start: 5 @54746 has 8 MA's), (Start: 7 @54749 has 17 MA's), (10, 54875), (12, 54902), (14, 54911), (22, 55154), (26, 55217), (27, 55229), (31, 55277), (32, 55295), (33, 55328), (50, 55541),

Gene: Poultruss_80 Start: 54704, Stop: 55555, Start Num: 7

Candidate Starts for Poultruss_80:

(Start: 7 @54704 has 17 MA's), (9, 54722), (12, 54848), (14, 54857), (23, 55124), (26, 55163), (27, 55175), (31, 55223), (32, 55241), (50, 55487),

Gene: Rachella_82 Start: 54827, Stop: 55690, Start Num: 5

Candidate Starts for Rachella_82:

(Start: 5 @54827 has 8 MA's), (Start: 7 @54830 has 17 MA's), (10, 54956), (12, 54983), (14, 54992), (26, 55298), (27, 55310), (31, 55358), (32, 55376), (33, 55409), (50, 55622),

Gene: Rie18_82 Start: 54561, Stop: 55439, Start Num: 7

Candidate Starts for Rie18_82:

(Start: 7 @54561 has 17 MA's), (Start: 8 @54564 has 6 MA's), (12, 54714), (14, 54723), (23, 54990), (26, 55029), (27, 55041), (31, 55089), (32, 55107), (33, 55140), (34, 55155), (42, 55302), (43, 55323), (49, 55356), (51, 55368),

Gene: RikSengupta_86 Start: 55182, Stop: 56111, Start Num: 8

Candidate Starts for RikSengupta_86:

(Start: 8 @55182 has 6 MA's), (18, 55371), (20, 55431), (24, 55608), (26, 55626), (27, 55641), (28, 55647), (29, 55650), (30, 55662), (36, 55773), (38, 55791), (40, 55854), (45, 55929), (52, 55977), (53, 55989), (57, 56052), (58, 56058),

Gene: Snakehole_82 Start: 54175, Stop: 55032, Start Num: 6

Candidate Starts for Snakehole_82:

(2, 54166), (Start: 4 @54172 has 4 MA's), (6, 54175), (Start: 8 @54178 has 6 MA's), (10, 54301), (12, 54328), (13, 54334), (14, 54337), (23, 54601), (26, 54640), (27, 54652), (31, 54700), (32, 54718), (33, 54751), (35, 54769), (37, 54787), (47, 54943),

Gene: Sparcetus_85 Start: 54866, Stop: 55795, Start Num: 8

Candidate Starts for Sparcetus_85:

(Start: 8 @54866 has 6 MA's), (18, 55055), (20, 55115), (24, 55292), (26, 55310), (27, 55325), (28, 55331), (29, 55334), (30, 55346), (36, 55457), (38, 55475), (40, 55538), (45, 55613), (52, 55661), (53, 55673), (57, 55736), (58, 55742),

Gene: Tedro_82 Start: 54322, Stop: 55179, Start Num: 7

Candidate Starts for Tedro_82:

(Start: 5 @54319 has 8 MA's), (Start: 7 @54322 has 17 MA's), (10, 54448), (12, 54475), (13, 54481), (14, 54484), (23, 54748), (26, 54787), (27, 54799), (31, 54847), (32, 54865), (33, 54898), (41, 55021), (46, 55090),

Gene: TinyMiny_86 Start: 54995, Stop: 55966, Start Num: 8

Candidate Starts for TinyMiny_86:

(Start: 8 @54995 has 6 MA's), (10, 55109), (11, 55115), (12, 55136), (14, 55145), (20, 55271), (24, 55448), (26, 55466), (28, 55487), (29, 55490), (30, 55502), (36, 55613), (38, 55631), (39, 55658), (40, 55694), (45, 55769), (52, 55817), (53, 55829), (57, 55892), (59, 55901), (61, 55925),