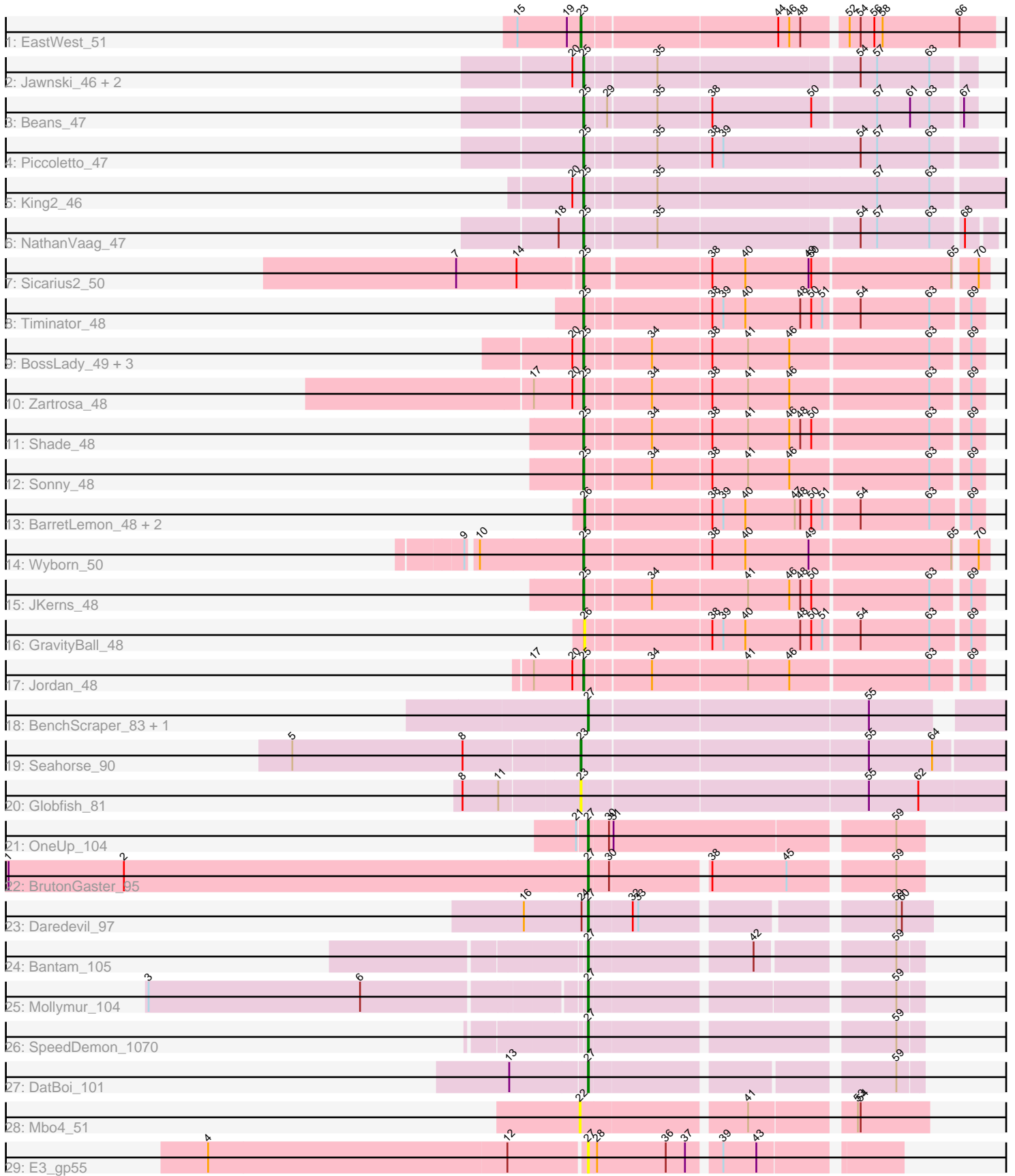


Pham 196684



Note: Tracks are now grouped by subcluster and scaled. Switching in subcluster is indicated by changes in track color. Track scale is now set by default to display the region 30 bp upstream of start 1 to 30 bp downstream of the last possible start. If this default region is judged to be packed too tightly with annotated starts, the track will be further scaled to only show that region of the ORF with annotated starts. This action will be indicated by adding "Zoomed" to the title. For starts, yellow indicates the location of called starts comprised solely of Glimmer/GeneMark auto-annotations, green indicates the location of called starts with at least 1 manual gene annotation.

## Pham 196684 Report

This analysis was run 12/09/24 on database version 580.

Pham number 196684 has 37 members, 4 are drafts.

Phages represented in each track:

- Track 1 : EastWest\_51
- Track 2 : Jawnski\_46, Franzy\_47, Brent\_47
- Track 3 : Beans\_47
- Track 4 : Piccoletto\_47
- Track 5 : King2\_46
- Track 6 : NathanVaag\_47
- Track 7 : Sicarius2\_50
- Track 8 : Timinator\_48
- Track 9 : BossLady\_49, Martha\_48, TaeYoung\_49, Grekaycon\_48
- Track 10 : Zartrosa\_48
- Track 11 : Shade\_48
- Track 12 : Sonny\_48
- Track 13 : BarretLemon\_48, LeeroyJ\_48, StevieBAY\_48
- Track 14 : Wyborn\_50
- Track 15 : JKerns\_48
- Track 16 : GravityBall\_48
- Track 17 : Jordan\_48
- Track 18 : BenchScraper\_83, Richie\_86
- Track 19 : Seahorse\_90
- Track 20 : Globfish\_81
- Track 21 : OneUp\_104
- Track 22 : BrutonGaster\_95
- Track 23 : Daredevil\_97
- Track 24 : Bantam\_105
- Track 25 : Mollymur\_104
- Track 26 : SpeedDemon\_1070
- Track 27 : DatBoi\_101
- Track 28 : Mbo4\_51
- Track 29 : E3\_gp55

### ***Summary of Final Annotations (See graph section above for start numbers):***

The start number called the most often in the published annotations is 25, it was called in 19 of the 33 non-draft genes in the pham.

Genes that call this "Most Annotated" start:

- Beans\_47, BossLady\_49, Brent\_47, Franzy\_47, Grekaycon\_48, JKerns\_48, Jawnski\_46, Jordan\_48, King2\_46, Martha\_48, NathanVaag\_47, Piccoletto\_47, Shade\_48, Sicarius2\_50, Sonny\_48, TaeYoung\_49, Timinator\_48, Wyborn\_50, Zartrosa\_48,

Genes that have the "Most Annotated" start but do not call it:

- 

Genes that do not have the "Most Annotated" start:

- Bantam\_105, BarretLemon\_48, BenchScraper\_83, BrutonGaster\_95, Daredevil\_97, DatBoi\_101, E3\_gp55, EastWest\_51, Globfish\_81, GravityBall\_48, LeeroyJ\_48, Mbo4\_51, Mollymur\_104, OneUp\_104, Richie\_86, Seahorse\_90, SpeedDemon\_1070, StevieBAY\_48,

### Summary by start number:

Start 22:

- Found in 1 of 37 ( 2.7% ) of genes in pham
- No Manual Annotations of this start.
- Called 100.0% of time when present
- Phage (with cluster) where this start called: Mbo4\_51 (singleton),

Start 23:

- Found in 3 of 37 ( 8.1% ) of genes in pham
- Manual Annotations of this start: 2 of 33
- Called 100.0% of time when present
- Phage (with cluster) where this start called: EastWest\_51 (AO), Globfish\_81 (AY), Seahorse\_90 (AY),

Start 25:

- Found in 19 of 37 ( 51.4% ) of genes in pham
- Manual Annotations of this start: 19 of 33
- Called 100.0% of time when present
- Phage (with cluster) where this start called: Beans\_47 (AO1), BossLady\_49 (AO2), Brent\_47 (AO1), Franzy\_47 (AO1), Grekaycon\_48 (AO2), JKerns\_48 (AO2), Jawnski\_46 (AO1), Jordan\_48 (AO2), King2\_46 (AO1), Martha\_48 (AO2), NathanVaag\_47 (AO1), Piccoletto\_47 (AO1), Shade\_48 (AO2), Sicarius2\_50 (AO2), Sonny\_48 (AO2), TaeYoung\_49 (AO2), Timinator\_48 (AO2), Wyborn\_50 (AO2), Zartrosa\_48 (AO2),

Start 26:

- Found in 4 of 37 ( 10.8% ) of genes in pham
- Manual Annotations of this start: 3 of 33
- Called 100.0% of time when present
- Phage (with cluster) where this start called: BarretLemon\_48 (AO2), GravityBall\_48 (AO2), LeeroyJ\_48 (AO2), StevieBAY\_48 (AO2),

Start 27:

- Found in 10 of 37 ( 27.0% ) of genes in pham
- Manual Annotations of this start: 9 of 33
- Called 100.0% of time when present

- Phage (with cluster) where this start called: Bantam\_105 (DL), BenchScraper\_83 (AY), BrutonGaster\_95 (CQ2), Daredevil\_97 (DL), DatBoi\_101 (DL), E3\_gp55 (singleton), Mollymur\_104 (DL), OneUp\_104 (CQ2), Richie\_86 (AY), SpeedDemon\_1070 (DL),

### **Summary by clusters:**

There are 7 clusters represented in this pham: DL, singleton, AO, AO2, AO1, AY, CQ2,

Info for manual annotations of cluster AO:

- Start number 23 was manually annotated 1 time for cluster AO.

Info for manual annotations of cluster AO1:

- Start number 25 was manually annotated 7 times for cluster AO1.

Info for manual annotations of cluster AO2:

- Start number 25 was manually annotated 12 times for cluster AO2.
- Start number 26 was manually annotated 3 times for cluster AO2.

Info for manual annotations of cluster AY:

- Start number 23 was manually annotated 1 time for cluster AY.
- Start number 27 was manually annotated 2 times for cluster AY.

Info for manual annotations of cluster CQ2:

- Start number 27 was manually annotated 2 times for cluster CQ2.

Info for manual annotations of cluster DL:

- Start number 27 was manually annotated 5 times for cluster DL.

### **Gene Information:**

Gene: Bantam\_105 Start: 68901, Stop: 69227, Start Num: 27

Candidate Starts for Bantam\_105:

(Start: 27 @68901 has 9 MA's), (42, 69066), (59, 69201),

Gene: BarretLemon\_48 Start: 36575, Stop: 36988, Start Num: 26

Candidate Starts for BarretLemon\_48:

(Start: 26 @36575 has 3 MA's), (38, 36704), (39, 36716), (40, 36740), (47, 36794), (48, 36800), (50, 36812), (51, 36824), (54, 36860), (63, 36935), (69, 36974),

Gene: Beans\_47 Start: 36659, Stop: 37063, Start Num: 25

Candidate Starts for Beans\_47:

(Start: 25 @36659 has 19 MA's), (29, 36680), (35, 36731), (38, 36788), (50, 36896), (57, 36962), (61, 36998), (63, 37019), (67, 37049),

Gene: BenchScraper\_83 Start: 45886, Stop: 46317, Start Num: 27

Candidate Starts for BenchScraper\_83:

(Start: 27 @45886 has 9 MA's), (55, 46183),

Gene: BossLady\_49 Start: 36654, Stop: 37064, Start Num: 25

Candidate Starts for BossLady\_49:

(20, 36642), (Start: 25 @36654 has 19 MA's), (34, 36720), (38, 36783), (41, 36822), (46, 36867), (63, 37014), (69, 37050),

Gene: Brent\_47 Start: 36916, Stop: 37317, Start Num: 25

Candidate Starts for Brent\_47:

(20, 36904), (Start: 25 @36916 has 19 MA's), (35, 36988), (54, 37198), (57, 37216), (63, 37273),

Gene: BrutonGaster\_95 Start: 62658, Stop: 62993, Start Num: 27

Candidate Starts for BrutonGaster\_95:

(1, 62028), (2, 62154), (Start: 27 @62658 has 9 MA's), (30, 62679), (38, 62778), (45, 62859), (59, 62964),

Gene: Daredevil\_97 Start: 64928, Stop: 65263, Start Num: 27

Candidate Starts for Daredevil\_97:

(16, 64859), (24, 64922), (Start: 27 @64928 has 9 MA's), (32, 64973), (33, 64979), (59, 65225), (60, 65231),

Gene: DatBoi\_101 Start: 68050, Stop: 68376, Start Num: 27

Candidate Starts for DatBoi\_101:

(13, 67969), (Start: 27 @68050 has 9 MA's), (59, 68350),

Gene: E3\_gp55 Start: 22695, Stop: 23006, Start Num: 27

Candidate Starts for E3\_gp55:

(4, 22290), (12, 22614), (Start: 27 @22695 has 9 MA's), (28, 22704), (36, 22779), (37, 22800), (39, 22830), (43, 22866),

Gene: EastWest\_51 Start: 35918, Stop: 36346, Start Num: 23

Candidate Starts for EastWest\_51:

(15, 35849), (19, 35903), (Start: 23 @35918 has 2 MA's), (44, 36122), (46, 36134), (48, 36146), (52, 36188), (54, 36200), (56, 36215), (58, 36224), (66, 36308),

Gene: Franzy\_47 Start: 36932, Stop: 37333, Start Num: 25

Candidate Starts for Franzy\_47:

(20, 36920), (Start: 25 @36932 has 19 MA's), (35, 37004), (54, 37214), (57, 37232), (63, 37289),

Gene: Globfish\_81 Start: 45656, Stop: 46117, Start Num: 23

Candidate Starts for Globfish\_81:

(8, 45533), (11, 45572), (Start: 23 @45656 has 2 MA's), (55, 45959), (62, 46013),

Gene: GravityBall\_48 Start: 36671, Stop: 37084, Start Num: 26

Candidate Starts for GravityBall\_48:

(Start: 26 @36671 has 3 MA's), (38, 36800), (39, 36812), (40, 36836), (48, 36896), (50, 36908), (51, 36920), (54, 36956), (63, 37031), (69, 37070),

Gene: Grekaycon\_48 Start: 36550, Stop: 36960, Start Num: 25

Candidate Starts for Grekaycon\_48:

(20, 36538), (Start: 25 @36550 has 19 MA's), (34, 36616), (38, 36679), (41, 36718), (46, 36763), (63, 36910), (69, 36946),

Gene: JKerns\_48 Start: 36809, Stop: 37219, Start Num: 25

Candidate Starts for JKerns\_48:

(Start: 25 @36809 has 19 MA's), (34, 36875), (41, 36977), (46, 37022), (48, 37034), (50, 37046), (63, 37169), (69, 37205),

Gene: Jawnski\_46 Start: 36440, Stop: 36841, Start Num: 25

Candidate Starts for Jawnski\_46:

(20, 36428), (Start: 25 @36440 has 19 MA's), (35, 36512), (54, 36722), (57, 36740), (63, 36797),

Gene: Jordan\_48 Start: 36636, Stop: 37046, Start Num: 25

Candidate Starts for Jordan\_48:

(17, 36582), (20, 36624), (Start: 25 @36636 has 19 MA's), (34, 36702), (41, 36804), (46, 36849), (63, 36996), (69, 37032),

Gene: King2\_46 Start: 36763, Stop: 37218, Start Num: 25

Candidate Starts for King2\_46:

(20, 36751), (Start: 25 @36763 has 19 MA's), (35, 36835), (57, 37069), (63, 37126),

Gene: LeeroyJ\_48 Start: 36604, Stop: 37017, Start Num: 26

Candidate Starts for LeeroyJ\_48:

(Start: 26 @36604 has 3 MA's), (38, 36733), (39, 36745), (40, 36769), (47, 36823), (48, 36829), (50, 36841), (51, 36853), (54, 36889), (63, 36964), (69, 37003),

Gene: Martha\_48 Start: 36667, Stop: 37077, Start Num: 25

Candidate Starts for Martha\_48:

(20, 36655), (Start: 25 @36667 has 19 MA's), (34, 36733), (38, 36796), (41, 36835), (46, 36880), (63, 37027), (69, 37063),

Gene: Mbo4\_51 Start: 38577, Stop: 38924, Start Num: 22

Candidate Starts for Mbo4\_51:

(22, 38577), (41, 38745), (53, 38847), (54, 38850),

Gene: Mollymur\_104 Start: 69311, Stop: 69640, Start Num: 27

Candidate Starts for Mollymur\_104:

(3, 68855), (6, 69086), (Start: 27 @69311 has 9 MA's), (59, 69614),

Gene: NathanVaag\_47 Start: 36675, Stop: 37091, Start Num: 25

Candidate Starts for NathanVaag\_47:

(18, 36648), (Start: 25 @36675 has 19 MA's), (35, 36747), (54, 36957), (57, 36975), (63, 37032), (68, 37062),

Gene: OneUp\_104 Start: 66053, Stop: 66397, Start Num: 27

Candidate Starts for OneUp\_104:

(21, 66044), (Start: 27 @66053 has 9 MA's), (30, 66074), (31, 66077), (59, 66368),

Gene: Piccoletto\_47 Start: 36738, Stop: 37166, Start Num: 25

Candidate Starts for Piccoletto\_47:

(Start: 25 @36738 has 19 MA's), (35, 36810), (38, 36867), (39, 36879), (54, 37026), (57, 37044), (63, 37101),

Gene: Richie\_86 Start: 48458, Stop: 48889, Start Num: 27

Candidate Starts for Richie\_86:

(Start: 27 @48458 has 9 MA's), (55, 48755),

Gene: Seahorse\_90 Start: 51836, Stop: 52294, Start Num: 23

Candidate Starts for Seahorse\_90:

(5, 51527), (8, 51713), (Start: 23 @51836 has 2 MA's), (55, 52139), (64, 52208),

Gene: Shade\_48 Start: 36561, Stop: 36971, Start Num: 25

Candidate Starts for Shade\_48:

(Start: 25 @36561 has 19 MA's), (34, 36627), (38, 36690), (41, 36729), (46, 36774), (48, 36786), (50, 36798), (63, 36921), (69, 36957),

Gene: Sicarius2\_50 Start: 35904, Stop: 36320, Start Num: 25

Candidate Starts for Sicarius2\_50:

(7, 35772), (14, 35838), (Start: 25 @35904 has 19 MA's), (38, 36033), (40, 36069), (49, 36138), (50, 36141), (65, 36288), (70, 36309),

Gene: Sonny\_48 Start: 36648, Stop: 37058, Start Num: 25

Candidate Starts for Sonny\_48:

(Start: 25 @36648 has 19 MA's), (34, 36714), (38, 36777), (41, 36816), (46, 36861), (63, 37008), (69, 37044),

Gene: SpeedDemon\_1070 Start: 71415, Stop: 71747, Start Num: 27

Candidate Starts for SpeedDemon\_1070:

(Start: 27 @71415 has 9 MA's), (59, 71721),

Gene: StevieBAY\_48 Start: 36668, Stop: 37081, Start Num: 26

Candidate Starts for StevieBAY\_48:

(Start: 26 @36668 has 3 MA's), (38, 36797), (39, 36809), (40, 36833), (47, 36887), (48, 36893), (50, 36905), (51, 36917), (54, 36953), (63, 37028), (69, 37067),

Gene: TaeYoung\_49 Start: 36622, Stop: 37032, Start Num: 25

Candidate Starts for TaeYoung\_49:

(20, 36610), (Start: 25 @36622 has 19 MA's), (34, 36688), (38, 36751), (41, 36790), (46, 36835), (63, 36982), (69, 37018),

Gene: Timinator\_48 Start: 36535, Stop: 36948, Start Num: 25

Candidate Starts for Timinator\_48:

(Start: 25 @36535 has 19 MA's), (38, 36664), (39, 36676), (40, 36700), (48, 36760), (50, 36772), (51, 36784), (54, 36820), (63, 36895), (69, 36934),

Gene: Wyborn\_50 Start: 36752, Stop: 37171, Start Num: 25

Candidate Starts for Wyborn\_50:

(9, 36632), (10, 36641), (Start: 25 @36752 has 19 MA's), (38, 36884), (40, 36920), (49, 36989), (65, 37139), (70, 37160),

Gene: Zartrosa\_48 Start: 36612, Stop: 37022, Start Num: 25

Candidate Starts for Zartrosa\_48:

(17, 36558), (20, 36600), (Start: 25 @36612 has 19 MA's), (34, 36678), (38, 36741), (41, 36780), (46, 36825), (63, 36972), (69, 37008),