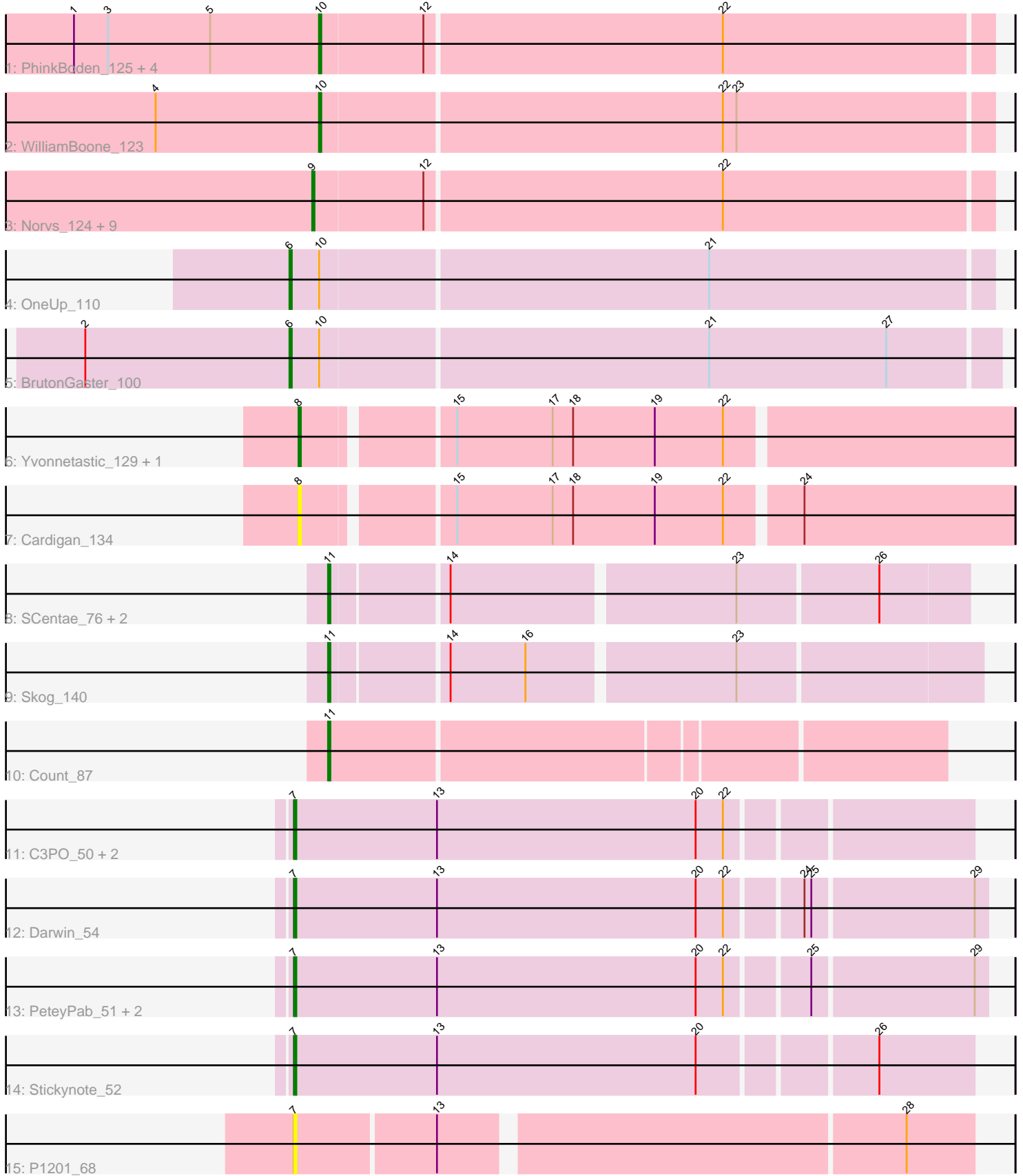


Pham 196688



Note: Tracks are now grouped by subcluster and scaled. Switching in subcluster is indicated by changes in track color. Track scale is now set by default to display the region 30 bp upstream of start 1 to 30 bp downstream of the last possible start. If this default region is judged to be packed too tightly with annotated starts, the track will be further scaled to only show that region of the ORF with annotated starts. This action will be indicated by adding "Zoomed" to the title. For starts, yellow indicates the location of called starts comprised solely of Glimmer/GeneMark auto-annotations, green indicates the location of called starts with at least 1 manual gene annotation.

## Pham 196688 Report

This analysis was run 12/09/24 on database version 580.

Pham number 196688 has 35 members, 6 are drafts.

Phages represented in each track:

- Track 1 : PhinkBoden\_125, Engineer\_127, Toniann\_125, Cucurbita\_126, Bachita\_128
- Track 2 : WilliamBoone\_123
- Track 3 : Norvs\_124, Abscondus\_124, Dusty\_121, Miskis\_124, Aphelion\_125, ClubL\_125, Culver\_125, Geeche\_123, Lozinak\_125, Smoothie\_126
- Track 4 : OneUp\_110
- Track 5 : BrutonGaster\_100
- Track 6 : Yvonnestic\_129, JonJames\_133
- Track 7 : Cardigan\_134
- Track 8 : SCentae\_76, CherryTomatoes\_78, Pupper\_77
- Track 9 : Skog\_140
- Track 10 : Count\_87
- Track 11 : C3PO\_50, Kimchi1738\_51, Cruella\_50
- Track 12 : Darwin\_54
- Track 13 : PeteyPab\_51, PotatoChip\_52, Zion\_52
- Track 14 : Stickynote\_52
- Track 15 : P1201\_68

### ***Summary of Final Annotations (See graph section above for start numbers):***

The start number called the most often in the published annotations is 7, it was called in 8 of the 29 non-draft genes in the pham.

Genes that call this "Most Annotated" start:

- C3PO\_50, Cruella\_50, Darwin\_54, Kimchi1738\_51, P1201\_68, PeteyPab\_51, PotatoChip\_52, Stickynote\_52, Zion\_52,

Genes that have the "Most Annotated" start but do not call it:

- 

Genes that do not have the "Most Annotated" start:

- Abscondus\_124, Aphelion\_125, Bachita\_128, BrutonGaster\_100, Cardigan\_134, CherryTomatoes\_78, ClubL\_125, Count\_87, Cucurbita\_126, Culver\_125, Dusty\_121, Engineer\_127, Geeche\_123, JonJames\_133, Lozinak\_125, Miskis\_124, Norvs\_124,

OneUp\_110, PhinkBoden\_125, Pupper\_77, SCentae\_76, Skog\_140, Smoothie\_126, Toniann\_125, WilliamBoone\_123, Yvonnetastic\_129,

### Summary by start number:

Start 6:

- Found in 2 of 35 ( 5.7% ) of genes in pham
- Manual Annotations of this start: 2 of 29
- Called 100.0% of time when present
- Phage (with cluster) where this start called: BrutonGaster\_100 (CQ2), OneUp\_110 (CQ2),

Start 7:

- Found in 9 of 35 ( 25.7% ) of genes in pham
- Manual Annotations of this start: 8 of 29
- Called 100.0% of time when present
- Phage (with cluster) where this start called: C3PO\_50 (EN), Cruella\_50 (EN), Darwin\_54 (EN), Kimchi1738\_51 (EN), P1201\_68 (singleton), PeteyPab\_51 (EN), PotatoChip\_52 (EN), Stickynote\_52 (EN), Zion\_52 (EN),

Start 8:

- Found in 3 of 35 ( 8.6% ) of genes in pham
- Manual Annotations of this start: 2 of 29
- Called 100.0% of time when present
- Phage (with cluster) where this start called: Cardigan\_134 (DD), JonJames\_133 (DD), Yvonnetastic\_129 (DD),

Start 9:

- Found in 10 of 35 ( 28.6% ) of genes in pham
- Manual Annotations of this start: 6 of 29
- Called 100.0% of time when present
- Phage (with cluster) where this start called: Abscondus\_124 (CQ1), Aphelion\_125 (CQ1), ClubL\_125 (CQ1), Culver\_125 (CQ1), Dusty\_121 (CQ1), Geeche\_123 (CQ1), Lozinak\_125 (CQ1), Miskis\_124 (CQ1), Norvs\_124 (CQ1), Smoothie\_126 (CQ1),

Start 10:

- Found in 8 of 35 ( 22.9% ) of genes in pham
- Manual Annotations of this start: 6 of 29
- Called 75.0% of time when present
- Phage (with cluster) where this start called: Bachita\_128 (CQ1), Cucurbita\_126 (CQ1), Engineer\_127 (CQ1), PhinkBoden\_125 (CQ1), Toniann\_125 (CQ1), WilliamBoone\_123 (CQ1),

Start 11:

- Found in 5 of 35 ( 14.3% ) of genes in pham
- Manual Annotations of this start: 5 of 29
- Called 100.0% of time when present
- Phage (with cluster) where this start called: CherryTomatoes\_78 (DO), Count\_87 (EL), Pupper\_77 (DO), SCentae\_76 (DO), Skog\_140 (DO),

### Summary by clusters:

There are 7 clusters represented in this pham: DO, singleton, EN, EL, DD, CQ2, CQ1,

Info for manual annotations of cluster CQ1:

- Start number 9 was manually annotated 6 times for cluster CQ1.
- Start number 10 was manually annotated 6 times for cluster CQ1.

Info for manual annotations of cluster CQ2:

- Start number 6 was manually annotated 2 times for cluster CQ2.

Info for manual annotations of cluster DD:

- Start number 8 was manually annotated 2 times for cluster DD.

Info for manual annotations of cluster DO:

- Start number 11 was manually annotated 4 times for cluster DO.

Info for manual annotations of cluster EL:

- Start number 11 was manually annotated 1 time for cluster EL.

Info for manual annotations of cluster EN:

- Start number 7 was manually annotated 8 times for cluster EN.

### ***Gene Information:***

Gene: Abscondus\_124 Start: 70975, Stop: 71268, Start Num: 9

Candidate Starts for Abscondus\_124:

(Start: 9 @70975 has 6 MA's), (12, 71023), (22, 71152),

Gene: Aphelion\_125 Start: 72038, Stop: 72331, Start Num: 9

Candidate Starts for Aphelion\_125:

(Start: 9 @72038 has 6 MA's), (12, 72086), (22, 72215),

Gene: Bachita\_128 Start: 71997, Stop: 72287, Start Num: 10

Candidate Starts for Bachita\_128:

(1, 71889), (3, 71904), (5, 71949), (Start: 10 @71997 has 6 MA's), (12, 72042), (22, 72171),

Gene: BrutonGaster\_100 Start: 65316, Stop: 65621, Start Num: 6

Candidate Starts for BrutonGaster\_100:

(2, 65226), (Start: 6 @65316 has 2 MA's), (Start: 10 @65328 has 6 MA's), (21, 65496), (27, 65574),

Gene: C3PO\_50 Start: 43697, Stop: 43407, Start Num: 7

Candidate Starts for C3PO\_50:

(Start: 7 @43697 has 8 MA's), (13, 43634), (20, 43520), (22, 43508),

Gene: Cardigan\_134 Start: 76224, Stop: 76523, Start Num: 8

Candidate Starts for Cardigan\_134:

(Start: 8 @76224 has 2 MA's), (15, 76284), (17, 76326), (18, 76335), (19, 76371), (22, 76401), (24, 76431),

Gene: CherryTomatoes\_78 Start: 28836, Stop: 29102, Start Num: 11

Candidate Starts for CherryTomatoes\_78:

(Start: 11 @28836 has 5 MA's), (14, 28884), (23, 29004), (26, 29064),

Gene: ClubL\_125 Start: 70565, Stop: 70858, Start Num: 9

Candidate Starts for ClubL\_125:

(Start: 9 @70565 has 6 MA's), (12, 70613), (22, 70742),

Gene: Count\_87 Start: 57913, Stop: 58173, Start Num: 11

Candidate Starts for Count\_87:

(Start: 11 @57913 has 5 MA's),

Gene: Cruella\_50 Start: 43697, Stop: 43407, Start Num: 7

Candidate Starts for Cruella\_50:

(Start: 7 @43697 has 8 MA's), (13, 43634), (20, 43520), (22, 43508),

Gene: Cucurbita\_126 Start: 72310, Stop: 72600, Start Num: 10

Candidate Starts for Cucurbita\_126:

(1, 72202), (3, 72217), (5, 72262), (Start: 10 @72310 has 6 MA's), (12, 72355), (22, 72484),

Gene: Culver\_125 Start: 70325, Stop: 70618, Start Num: 9

Candidate Starts for Culver\_125:

(Start: 9 @70325 has 6 MA's), (12, 70373), (22, 70502),

Gene: Darwin\_54 Start: 43178, Stop: 42882, Start Num: 7

Candidate Starts for Darwin\_54:

(Start: 7 @43178 has 8 MA's), (13, 43115), (20, 43001), (22, 42989), (24, 42959), (25, 42956), (29, 42887),

Gene: Dusty\_121 Start: 70537, Stop: 70830, Start Num: 9

Candidate Starts for Dusty\_121:

(Start: 9 @70537 has 6 MA's), (12, 70585), (22, 70714),

Gene: Engineer\_127 Start: 71970, Stop: 72260, Start Num: 10

Candidate Starts for Engineer\_127:

(1, 71862), (3, 71877), (5, 71922), (Start: 10 @71970 has 6 MA's), (12, 72015), (22, 72144),

Gene: Geeche\_123 Start: 70760, Stop: 71053, Start Num: 9

Candidate Starts for Geeche\_123:

(Start: 9 @70760 has 6 MA's), (12, 70808), (22, 70937),

Gene: JonJames\_133 Start: 77174, Stop: 77473, Start Num: 8

Candidate Starts for JonJames\_133:

(Start: 8 @77174 has 2 MA's), (15, 77234), (17, 77276), (18, 77285), (19, 77321), (22, 77351),

Gene: Kimchi1738\_51 Start: 43674, Stop: 43384, Start Num: 7

Candidate Starts for Kimchi1738\_51:

(Start: 7 @43674 has 8 MA's), (13, 43611), (20, 43497), (22, 43485),

Gene: Lozinak\_125 Start: 71628, Stop: 71921, Start Num: 9

Candidate Starts for Lozinak\_125:

(Start: 9 @71628 has 6 MA's), (12, 71676), (22, 71805),

Gene: Miskis\_124 Start: 71060, Stop: 71353, Start Num: 9

Candidate Starts for Miskis\_124:

(Start: 9 @71060 has 6 MA's), (12, 71108), (22, 71237),

Gene: Norvs\_124 Start: 71047, Stop: 71340, Start Num: 9

Candidate Starts for Norvs\_124:

(Start: 9 @71047 has 6 MA's), (12, 71095), (22, 71224),

Gene: OneUp\_110 Start: 69312, Stop: 69614, Start Num: 6

Candidate Starts for OneUp\_110:

(Start: 6 @69312 has 2 MA's), (Start: 10 @69324 has 6 MA's), (21, 69492),

Gene: P1201\_68 Start: 51515, Stop: 51231, Start Num: 7

Candidate Starts for P1201\_68:

(Start: 7 @51515 has 8 MA's), (13, 51455), (28, 51260),

Gene: PeteyPab\_51 Start: 43958, Stop: 43662, Start Num: 7

Candidate Starts for PeteyPab\_51:

(Start: 7 @43958 has 8 MA's), (13, 43895), (20, 43781), (22, 43769), (25, 43736), (29, 43667),

Gene: PhinkBoden\_125 Start: 71915, Stop: 72205, Start Num: 10

Candidate Starts for PhinkBoden\_125:

(1, 71807), (3, 71822), (5, 71867), (Start: 10 @71915 has 6 MA's), (12, 71960), (22, 72089),

Gene: PotatoChip\_52 Start: 43960, Stop: 43664, Start Num: 7

Candidate Starts for PotatoChip\_52:

(Start: 7 @43960 has 8 MA's), (13, 43897), (20, 43783), (22, 43771), (25, 43738), (29, 43669),

Gene: Pupper\_77 Start: 28936, Stop: 29202, Start Num: 11

Candidate Starts for Pupper\_77:

(Start: 11 @28936 has 5 MA's), (14, 28984), (23, 29104), (26, 29164),

Gene: SCentae\_76 Start: 28691, Stop: 28957, Start Num: 11

Candidate Starts for SCentae\_76:

(Start: 11 @28691 has 5 MA's), (14, 28739), (23, 28859), (26, 28919),

Gene: Skog\_140 Start: 57999, Stop: 58271, Start Num: 11

Candidate Starts for Skog\_140:

(Start: 11 @57999 has 5 MA's), (14, 58047), (16, 58080), (23, 58167),

Gene: Smoothie\_126 Start: 71628, Stop: 71921, Start Num: 9

Candidate Starts for Smoothie\_126:

(Start: 9 @71628 has 6 MA's), (12, 71676), (22, 71805),

Gene: Stickynote\_52 Start: 43964, Stop: 43674, Start Num: 7

Candidate Starts for Stickynote\_52:

(Start: 7 @43964 has 8 MA's), (13, 43901), (20, 43787), (26, 43715),

Gene: Toniann\_125 Start: 71160, Stop: 71450, Start Num: 10

Candidate Starts for Toniann\_125:

(1, 71052), (3, 71067), (5, 71112), (Start: 10 @71160 has 6 MA's), (12, 71205), (22, 71334),

Gene: WilliamBoone\_123 Start: 68402, Stop: 68692, Start Num: 10

Candidate Starts for WilliamBoone\_123:

(4, 68330), (Start: 10 @68402 has 6 MA's), (22, 68576), (23, 68582),

Gene: Yvonnetastic\_129 Start: 73454, Stop: 73753, Start Num: 8

Candidate Starts for Yvonnetastic\_129:

(Start: 8 @73454 has 2 MA's), (15, 73514), (17, 73556), (18, 73565), (19, 73601), (22, 73631),

Gene: Zion\_52 Start: 43958, Stop: 43662, Start Num: 7

Candidate Starts for Zion\_52:

(Start: 7 @43958 has 8 MA's), (13, 43895), (20, 43781), (22, 43769), (25, 43736), (29, 43667),