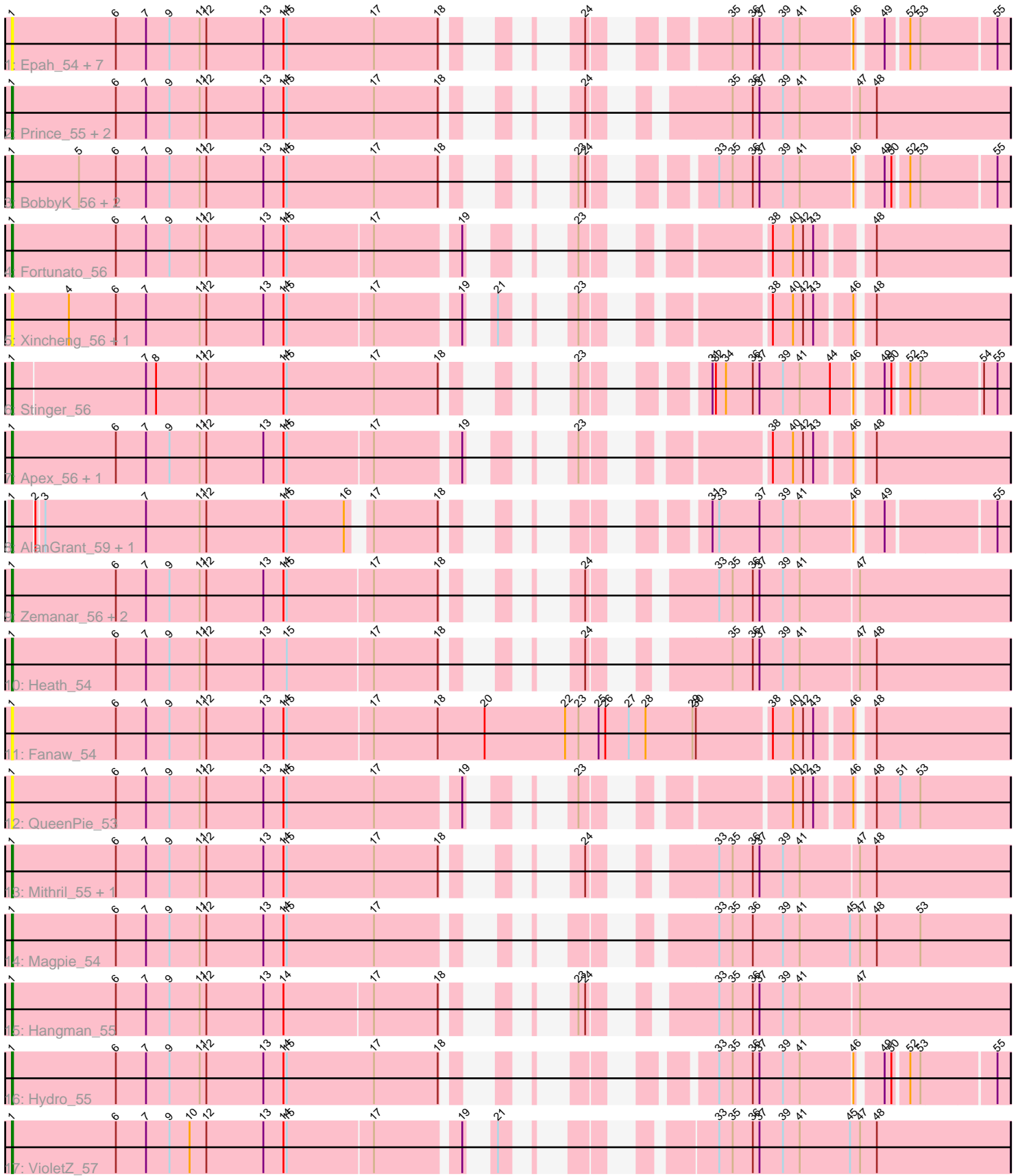


Pham 196693



Note: Tracks are now grouped by subcluster and scaled. Switching in subcluster is indicated by changes in track color. Track scale is now set by default to display the region 30 bp upstream of start 1 to 30 bp downstream of the last possible start. If this default region is judged to be packed too tightly with annotated starts, the track will be further scaled to only show that region of the ORF with annotated starts. This action will be indicated by adding "Zoomed" to the title. For starts, yellow indicates the location of called starts comprised solely of Glimmer/GeneMark auto-annotations, green indicates the location of called starts with at least 1 manual gene annotation.

## Pham 196693 Report

This analysis was run 12/09/24 on database version 580.

Pham number 196693 has 34 members, 12 are drafts.

Phages represented in each track:

- Track 1 : Epah\_54, Hally898\_54, Antihero\_54, GinPorsche\_54, Poster\_54, Ahwei\_54, Nanao\_54, Lambano\_54
- Track 2 : Prince\_55, ChrisnMich\_55, Mudslide\_55
- Track 3 : BobbyK\_56, Frederick\_56, Lolalove\_56
- Track 4 : Fortunato\_56
- Track 5 : Xincheng\_56, JaguarMi\_57
- Track 6 : Stinger\_56
- Track 7 : Apex\_56, Austelle\_56
- Track 8 : AlanGrant\_59, Vincenzo\_58
- Track 9 : Zemanar\_56, Waleliano\_55, BrownCNA\_57
- Track 10 : Heath\_54
- Track 11 : Fanaw\_54
- Track 12 : QueenPie\_53
- Track 13 : Mithril\_55, RawrgerThat\_56
- Track 14 : Magpie\_54
- Track 15 : Hangman\_55
- Track 16 : Hydro\_55
- Track 17 : VioletZ\_57

### ***Summary of Final Annotations (See graph section above for start numbers):***

The start number called the most often in the published annotations is 1, it was called in 22 of the 22 non-draft genes in the pham.

Genes that call this "Most Annotated" start:

- Ahwei\_54, AlanGrant\_59, Antihero\_54, Apex\_56, Austelle\_56, BobbyK\_56, BrownCNA\_57, ChrisnMich\_55, Epah\_54, Fanaw\_54, Fortunato\_56, Frederick\_56, GinPorsche\_54, Hally898\_54, Hangman\_55, Heath\_54, Hydro\_55, JaguarMi\_57, Lambano\_54, Lolalove\_56, Magpie\_54, Mithril\_55, Mudslide\_55, Nanao\_54, Poster\_54, Prince\_55, QueenPie\_53, RawrgerThat\_56, Stinger\_56, Vincenzo\_58, VioletZ\_57, Waleliano\_55, Xincheng\_56, Zemanar\_56,

Genes that have the "Most Annotated" start but do not call it:

-

Genes that do not have the "Most Annotated" start:

- 

### Summary by start number:

Start 1:

- Found in 34 of 34 ( 100.0% ) of genes in pham
- Manual Annotations of this start: 22 of 22
- Called 100.0% of time when present
- Phage (with cluster) where this start called: Ahwei\_54 (B4), AlanGrant\_59 (B4), Antihero\_54 (B4), Apex\_56 (B4), Austelle\_56 (B4), BobbyK\_56 (B4), BrownCNA\_57 (B4), ChrisnMich\_55 (B4), Epah\_54 (B4), Fanaw\_54 (B4), Fortunato\_56 (B4), Frederick\_56 (B4), GinPorsche\_54 (B4), Hally898\_54 (B4), Hangman\_55 (B4), Heath\_54 (B4), Hydro\_55 (B4), JaguarMi\_57 (B4), Lambano\_54 (B4), Lolalove\_56 (B4), Magpie\_54 (B4), Mithril\_55 (B4), Mudslide\_55 (B4), Nanao\_54 (B4), Poster\_54 (B4), Prince\_55 (B4), QueenPie\_53 (B4), RawrgerThat\_56 (B4), Stinger\_56 (B4), Vincenzo\_58 (B4), VioletZ\_57 (B4), Waleliano\_55 (B4), Xincheng\_56 (B4), Zemanar\_56 (B4),

### Summary by clusters:

There is one cluster represented in this pham: B4

Info for manual annotations of cluster B4:

- Start number 1 was manually annotated 22 times for cluster B4.

### Gene Information:

Gene: Ahwei\_54 Start: 54288, Stop: 53557, Start Num: 1

Candidate Starts for Ahwei\_54:

(Start: 1 @54288 has 22 MA's), (6, 54195), (7, 54168), (9, 54147), (11, 54120), (12, 54114), (13, 54063), (14, 54045), (15, 54042), (17, 53964), (18, 53907), (24, 53865), (35, 53781), (36, 53763), (37, 53757), (39, 53736), (41, 53721), (46, 53676), (49, 53658), (52, 53640), (53, 53631), (55, 53568),

Gene: AlanGrant\_59 Start: 56404, Stop: 55694, Start Num: 1

Candidate Starts for AlanGrant\_59:

(Start: 1 @56404 has 22 MA's), (2, 56386), (3, 56380), (7, 56290), (11, 56242), (12, 56236), (14, 56167), (15, 56164), (16, 56113), (17, 56101), (18, 56044), (31, 55936), (33, 55930), (37, 55894), (39, 55873), (41, 55858), (46, 55813), (49, 55795), (55, 55705),

Gene: Antihero\_54 Start: 54286, Stop: 53555, Start Num: 1

Candidate Starts for Antihero\_54:

(Start: 1 @54286 has 22 MA's), (6, 54193), (7, 54166), (9, 54145), (11, 54118), (12, 54112), (13, 54061), (14, 54043), (15, 54040), (17, 53962), (18, 53905), (24, 53863), (35, 53779), (36, 53761), (37, 53755), (39, 53734), (41, 53719), (46, 53674), (49, 53656), (52, 53638), (53, 53629), (55, 53566),

Gene: Apex\_56 Start: 55508, Stop: 54768, Start Num: 1

Candidate Starts for Apex\_56:

(Start: 1 @55508 has 22 MA's), (6, 55415), (7, 55388), (9, 55367), (11, 55340), (12, 55334), (13, 55283), (14, 55265), (15, 55262), (17, 55187), (19, 55118), (23, 55085), (38, 54965), (40, 54947), (42,

54938), (43, 54929), (46, 54899), (48, 54887),

Gene: Austelle\_56 Start: 55961, Stop: 55221, Start Num: 1

Candidate Starts for Austelle\_56:

(Start: 1 @55961 has 22 MA's), (6, 55868), (7, 55841), (9, 55820), (11, 55793), (12, 55787), (13, 55736), (14, 55718), (15, 55715), (17, 55640), (19, 55571), (23, 55538), (38, 55418), (40, 55400), (42, 55391), (43, 55382), (46, 55352), (48, 55340),

Gene: BobbyK\_56 Start: 55271, Stop: 54540, Start Num: 1

Candidate Starts for BobbyK\_56:

(Start: 1 @55271 has 22 MA's), (5, 55211), (6, 55178), (7, 55151), (9, 55130), (11, 55103), (12, 55097), (13, 55046), (14, 55028), (15, 55025), (17, 54947), (18, 54890), (23, 54854), (24, 54848), (33, 54776), (35, 54764), (36, 54746), (37, 54740), (39, 54719), (41, 54704), (46, 54659), (49, 54641), (50, 54635), (52, 54623), (53, 54614), (55, 54551),

Gene: BrownCNA\_57 Start: 55628, Stop: 54879, Start Num: 1

Candidate Starts for BrownCNA\_57:

(Start: 1 @55628 has 22 MA's), (6, 55535), (7, 55508), (9, 55487), (11, 55460), (12, 55454), (13, 55403), (14, 55385), (15, 55382), (17, 55307), (18, 55250), (24, 55208), (33, 55136), (35, 55124), (36, 55106), (37, 55100), (39, 55079), (41, 55064), (47, 55013),

Gene: ChrisnMich\_55 Start: 54300, Stop: 53548, Start Num: 1

Candidate Starts for ChrisnMich\_55:

(Start: 1 @54300 has 22 MA's), (6, 54207), (7, 54180), (9, 54159), (11, 54132), (12, 54126), (13, 54075), (14, 54057), (15, 54054), (17, 53976), (18, 53919), (24, 53877), (35, 53793), (36, 53775), (37, 53769), (39, 53748), (41, 53733), (47, 53682), (48, 53667),

Gene: Epah\_54 Start: 54286, Stop: 53555, Start Num: 1

Candidate Starts for Epah\_54:

(Start: 1 @54286 has 22 MA's), (6, 54193), (7, 54166), (9, 54145), (11, 54118), (12, 54112), (13, 54061), (14, 54043), (15, 54040), (17, 53962), (18, 53905), (24, 53863), (35, 53779), (36, 53761), (37, 53755), (39, 53734), (41, 53719), (46, 53674), (49, 53656), (52, 53638), (53, 53629), (55, 53566),

Gene: Fanaw\_54 Start: 55177, Stop: 54308, Start Num: 1

Candidate Starts for Fanaw\_54:

(Start: 1 @55177 has 22 MA's), (6, 55084), (7, 55057), (9, 55036), (11, 55009), (12, 55003), (13, 54952), (14, 54934), (15, 54931), (17, 54856), (18, 54799), (20, 54757), (22, 54685), (23, 54673), (25, 54655), (26, 54649), (27, 54628), (28, 54613), (29, 54571), (30, 54568), (38, 54505), (40, 54487), (42, 54478), (43, 54469), (46, 54439), (48, 54427),

Gene: Fortunato\_56 Start: 55317, Stop: 54577, Start Num: 1

Candidate Starts for Fortunato\_56:

(Start: 1 @55317 has 22 MA's), (6, 55224), (7, 55197), (9, 55176), (11, 55149), (12, 55143), (13, 55092), (14, 55074), (15, 55071), (17, 54996), (19, 54927), (23, 54894), (38, 54774), (40, 54756), (42, 54747), (43, 54738), (48, 54696),

Gene: Frederick\_56 Start: 55214, Stop: 54483, Start Num: 1

Candidate Starts for Frederick\_56:

(Start: 1 @55214 has 22 MA's), (5, 55154), (6, 55121), (7, 55094), (9, 55073), (11, 55046), (12, 55040), (13, 54989), (14, 54971), (15, 54968), (17, 54890), (18, 54833), (23, 54797), (24, 54791), (33, 54719), (35, 54707), (36, 54689), (37, 54683), (39, 54662), (41, 54647), (46, 54602), (49, 54584), (50, 54578), (52, 54566), (53, 54557), (55, 54494),

Gene: GinPorsche\_54 Start: 54286, Stop: 53555, Start Num: 1

Candidate Starts for GinPorsche\_54:

(Start: 1 @54286 has 22 MA's), (6, 54193), (7, 54166), (9, 54145), (11, 54118), (12, 54112), (13, 54061), (14, 54043), (15, 54040), (17, 53962), (18, 53905), (24, 53863), (35, 53779), (36, 53761), (37, 53755), (39, 53734), (41, 53719), (46, 53674), (49, 53656), (52, 53638), (53, 53629), (55, 53566),

Gene: Hally898\_54 Start: 54301, Stop: 53570, Start Num: 1

Candidate Starts for Hally898\_54:

(Start: 1 @54301 has 22 MA's), (6, 54208), (7, 54181), (9, 54160), (11, 54133), (12, 54127), (13, 54076), (14, 54058), (15, 54055), (17, 53977), (18, 53920), (24, 53878), (35, 53794), (36, 53776), (37, 53770), (39, 53749), (41, 53734), (46, 53689), (49, 53671), (52, 53653), (53, 53644), (55, 53581),

Gene: Hangman\_55 Start: 55371, Stop: 54622, Start Num: 1

Candidate Starts for Hangman\_55:

(Start: 1 @55371 has 22 MA's), (6, 55278), (7, 55251), (9, 55230), (11, 55203), (12, 55197), (13, 55146), (14, 55128), (17, 55050), (18, 54993), (23, 54957), (24, 54951), (33, 54879), (35, 54867), (36, 54849), (37, 54843), (39, 54822), (41, 54807), (47, 54756),

Gene: Heath\_54 Start: 54997, Stop: 54248, Start Num: 1

Candidate Starts for Heath\_54:

(Start: 1 @54997 has 22 MA's), (6, 54904), (7, 54877), (9, 54856), (11, 54829), (12, 54823), (13, 54772), (15, 54751), (17, 54676), (18, 54619), (24, 54577), (35, 54493), (36, 54475), (37, 54469), (39, 54448), (41, 54433), (47, 54382), (48, 54367),

Gene: Hydro\_55 Start: 55348, Stop: 54617, Start Num: 1

Candidate Starts for Hydro\_55:

(Start: 1 @55348 has 22 MA's), (6, 55255), (7, 55228), (9, 55207), (11, 55180), (12, 55174), (13, 55123), (14, 55105), (15, 55102), (17, 55024), (18, 54967), (33, 54853), (35, 54841), (36, 54823), (37, 54817), (39, 54796), (41, 54781), (46, 54736), (49, 54718), (50, 54712), (52, 54700), (53, 54691), (55, 54628),

Gene: JaguarMi\_57 Start: 56412, Stop: 55672, Start Num: 1

Candidate Starts for JaguarMi\_57:

(Start: 1 @56412 has 22 MA's), (4, 56361), (6, 56319), (7, 56292), (11, 56244), (12, 56238), (13, 56187), (14, 56169), (15, 56166), (17, 56091), (19, 56022), (21, 56013), (23, 55989), (38, 55869), (40, 55851), (42, 55842), (43, 55833), (46, 55803), (48, 55791),

Gene: Lambano\_54 Start: 54301, Stop: 53570, Start Num: 1

Candidate Starts for Lambano\_54:

(Start: 1 @54301 has 22 MA's), (6, 54208), (7, 54181), (9, 54160), (11, 54133), (12, 54127), (13, 54076), (14, 54058), (15, 54055), (17, 53977), (18, 53920), (24, 53878), (35, 53794), (36, 53776), (37, 53770), (39, 53749), (41, 53734), (46, 53689), (49, 53671), (52, 53653), (53, 53644), (55, 53581),

Gene: Lolalove\_56 Start: 55331, Stop: 54600, Start Num: 1

Candidate Starts for Lolalove\_56:

(Start: 1 @55331 has 22 MA's), (5, 55271), (6, 55238), (7, 55211), (9, 55190), (11, 55163), (12, 55157), (13, 55106), (14, 55088), (15, 55085), (17, 55007), (18, 54950), (23, 54914), (24, 54908), (33, 54836), (35, 54824), (36, 54806), (37, 54800), (39, 54779), (41, 54764), (46, 54719), (49, 54701), (50, 54695), (52, 54683), (53, 54674), (55, 54611),

Gene: Magpie\_54 Start: 55250, Stop: 54492, Start Num: 1

Candidate Starts for Magpie\_54:

(Start: 1 @55250 has 22 MA's), (6, 55157), (7, 55130), (9, 55109), (11, 55082), (12, 55076), (13, 55025), (14, 55007), (15, 55004), (17, 54926), (33, 54752), (35, 54740), (36, 54722), (39, 54695), (41, 54680), (45, 54635), (47, 54626), (48, 54611), (53, 54572),

Gene: Mithril\_55 Start: 55326, Stop: 54574, Start Num: 1

Candidate Starts for Mithril\_55:

(Start: 1 @55326 has 22 MA's), (6, 55233), (7, 55206), (9, 55185), (11, 55158), (12, 55152), (13, 55101), (14, 55083), (15, 55080), (17, 55002), (18, 54945), (24, 54903), (33, 54831), (35, 54819), (36, 54801), (37, 54795), (39, 54774), (41, 54759), (47, 54708), (48, 54693),

Gene: Mudslide\_55 Start: 55593, Stop: 54841, Start Num: 1

Candidate Starts for Mudslide\_55:

(Start: 1 @55593 has 22 MA's), (6, 55500), (7, 55473), (9, 55452), (11, 55425), (12, 55419), (13, 55368), (14, 55350), (15, 55347), (17, 55269), (18, 55212), (24, 55170), (35, 55086), (36, 55068), (37, 55062), (39, 55041), (41, 55026), (47, 54975), (48, 54960),

Gene: Nanao\_54 Start: 54291, Stop: 53560, Start Num: 1

Candidate Starts for Nanao\_54:

(Start: 1 @54291 has 22 MA's), (6, 54198), (7, 54171), (9, 54150), (11, 54123), (12, 54117), (13, 54066), (14, 54048), (15, 54045), (17, 53967), (18, 53910), (24, 53868), (35, 53784), (36, 53766), (37, 53760), (39, 53739), (41, 53724), (46, 53679), (49, 53661), (52, 53643), (53, 53634), (55, 53571),

Gene: Poster\_54 Start: 54292, Stop: 53561, Start Num: 1

Candidate Starts for Poster\_54:

(Start: 1 @54292 has 22 MA's), (6, 54199), (7, 54172), (9, 54151), (11, 54124), (12, 54118), (13, 54067), (14, 54049), (15, 54046), (17, 53968), (18, 53911), (24, 53869), (35, 53785), (36, 53767), (37, 53761), (39, 53740), (41, 53725), (46, 53680), (49, 53662), (52, 53644), (53, 53635), (55, 53572),

Gene: Prince\_55 Start: 55506, Stop: 54754, Start Num: 1

Candidate Starts for Prince\_55:

(Start: 1 @55506 has 22 MA's), (6, 55413), (7, 55386), (9, 55365), (11, 55338), (12, 55332), (13, 55281), (14, 55263), (15, 55260), (17, 55182), (18, 55125), (24, 55083), (35, 54999), (36, 54981), (37, 54975), (39, 54954), (41, 54939), (47, 54888), (48, 54873),

Gene: QueenPie\_53 Start: 55010, Stop: 54267, Start Num: 1

Candidate Starts for QueenPie\_53:

(Start: 1 @55010 has 22 MA's), (6, 54917), (7, 54890), (9, 54869), (11, 54842), (12, 54836), (13, 54785), (14, 54767), (15, 54764), (17, 54686), (19, 54617), (23, 54584), (40, 54446), (42, 54437), (43, 54428), (46, 54398), (48, 54386), (51, 54365), (53, 54347),

Gene: RawrgerThat\_56 Start: 55346, Stop: 54594, Start Num: 1

Candidate Starts for RawrgerThat\_56:

(Start: 1 @55346 has 22 MA's), (6, 55253), (7, 55226), (9, 55205), (11, 55178), (12, 55172), (13, 55121), (14, 55103), (15, 55100), (17, 55022), (18, 54965), (24, 54923), (33, 54851), (35, 54839), (36, 54821), (37, 54815), (39, 54794), (41, 54779), (47, 54728), (48, 54713),

Gene: Stinger\_56 Start: 54216, Stop: 53488, Start Num: 1

Candidate Starts for Stinger\_56:

(Start: 1 @54216 has 22 MA's), (7, 54099), (8, 54090), (11, 54051), (12, 54045), (14, 53976), (15, 53973), (17, 53895), (18, 53838), (23, 53802), (31, 53730), (32, 53727), (34, 53718), (36, 53694), (37, 53688), (39, 53667), (41, 53652), (44, 53625), (46, 53607), (49, 53589), (50, 53583), (52, 53571), (53, 53562), (54, 53511), (55, 53499),

Gene: Vincenzo\_58 Start: 56434, Stop: 55724, Start Num: 1

Candidate Starts for Vincenzo\_58:

(Start: 1 @56434 has 22 MA's), (2, 56416), (3, 56410), (7, 56320), (11, 56272), (12, 56266), (14, 56197), (15, 56194), (16, 56143), (17, 56131), (18, 56074), (31, 55966), (33, 55960), (37, 55924), (39, 55903), (41, 55888), (46, 55843), (49, 55825), (55, 55735),

Gene: VioletZ\_57 Start: 55422, Stop: 54658, Start Num: 1

Candidate Starts for VioletZ\_57:

(Start: 1 @55422 has 22 MA's), (6, 55329), (7, 55302), (9, 55281), (10, 55263), (12, 55248), (13, 55197), (14, 55179), (15, 55176), (17, 55101), (19, 55032), (21, 55023), (33, 54918), (35, 54906), (36, 54888), (37, 54882), (39, 54861), (41, 54846), (45, 54801), (47, 54792), (48, 54777),

Gene: Waleliano\_55 Start: 55360, Stop: 54611, Start Num: 1

Candidate Starts for Waleliano\_55:

(Start: 1 @55360 has 22 MA's), (6, 55267), (7, 55240), (9, 55219), (11, 55192), (12, 55186), (13, 55135), (14, 55117), (15, 55114), (17, 55039), (18, 54982), (24, 54940), (33, 54868), (35, 54856), (36, 54838), (37, 54832), (39, 54811), (41, 54796), (47, 54745),

Gene: Xincheng\_56 Start: 56385, Stop: 55645, Start Num: 1

Candidate Starts for Xincheng\_56:

(Start: 1 @56385 has 22 MA's), (4, 56334), (6, 56292), (7, 56265), (11, 56217), (12, 56211), (13, 56160), (14, 56142), (15, 56139), (17, 56064), (19, 55995), (21, 55986), (23, 55962), (38, 55842), (40, 55824), (42, 55815), (43, 55806), (46, 55776), (48, 55764),

Gene: Zemanar\_56 Start: 55192, Stop: 54443, Start Num: 1

Candidate Starts for Zemanar\_56:

(Start: 1 @55192 has 22 MA's), (6, 55099), (7, 55072), (9, 55051), (11, 55024), (12, 55018), (13, 54967), (14, 54949), (15, 54946), (17, 54871), (18, 54814), (24, 54772), (33, 54700), (35, 54688), (36, 54670), (37, 54664), (39, 54643), (41, 54628), (47, 54577),