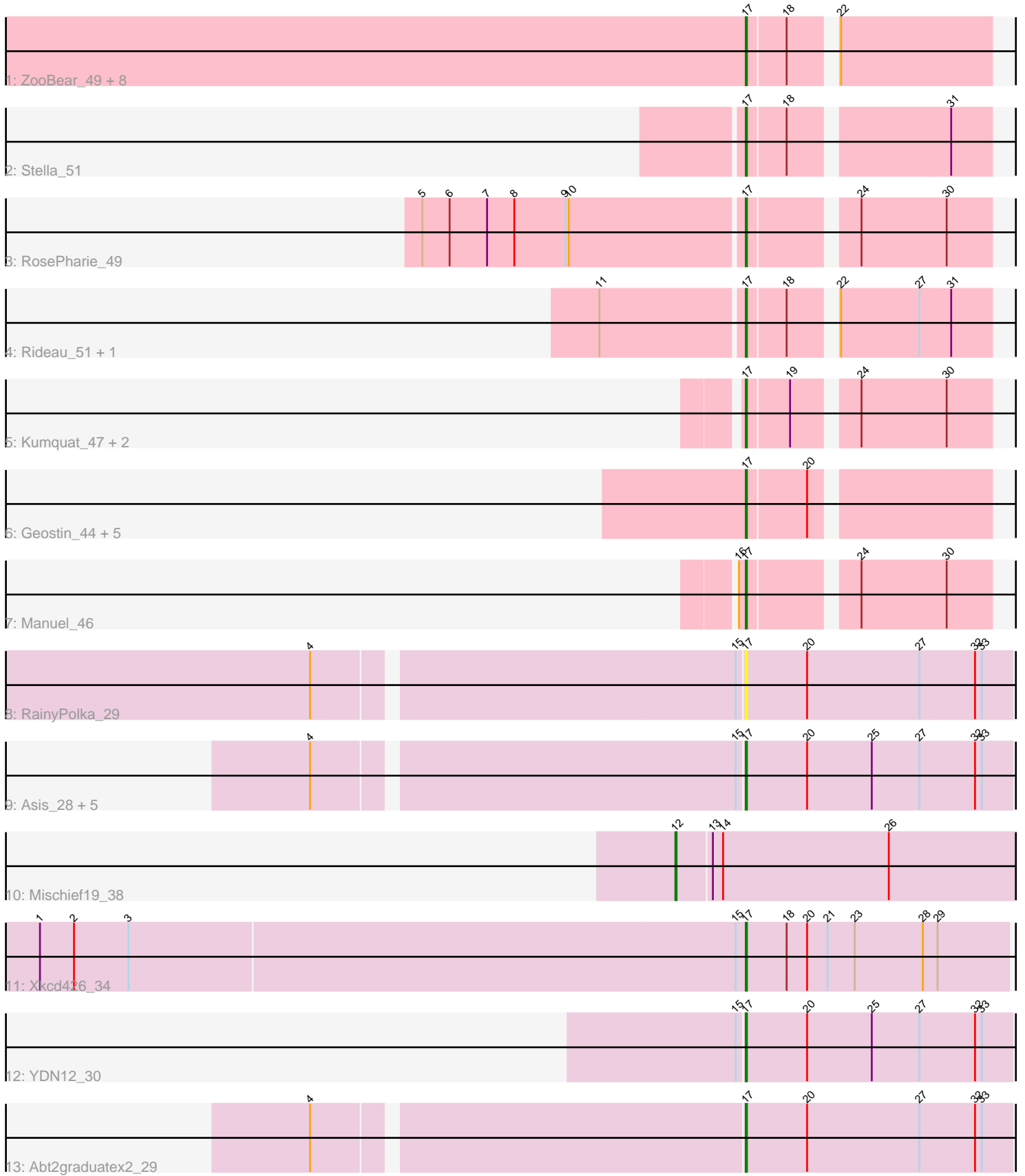


Pham 196696



Note: Tracks are now grouped by subcluster and scaled. Switching in subcluster is indicated by changes in track color. Track scale is now set by default to display the region 30 bp upstream of start 1 to 30 bp downstream of the last possible start. If this default region is judged to be packed too tightly with annotated starts, the track will be further scaled to only show that region of the ORF with annotated starts. This action will be indicated by adding "Zoomed" to the title. For starts, yellow indicates the location of called starts comprised solely of Glimmer/GeneMark auto-annotations, green indicates the location of called starts with at least 1 manual gene annotation.

Pham 196696 Report

This analysis was run 12/09/24 on database version 580.

Pham number 196696 has 34 members, 3 are drafts.

Phages represented in each track:

- Track 1 : ZooBear_49, Olicious_49, Romero_49, Immanuel3_49, ToriToki_49, Percastrophe_49, Treat_49, HaugeAnator_49, JPandJE_50
- Track 2 : Stella_51
- Track 3 : RosePharie_49
- Track 4 : Rideau_51, Dennebes_50
- Track 5 : Kumquat_47, Zeigle_47, WRightOn_50
- Track 6 : Geostin_44, Fabian_46, Vorvolakos_49, Gremlin23_49, FlowerPower_49, RetrieverFever_49
- Track 7 : Manuel_46
- Track 8 : RainyPolka_29
- Track 9 : Asis_28, BabyGotBac_28, BayC_28, TP1604_28, Salete_28, Maih_28
- Track 10 : Mischief19_38
- Track 11 : Xkcd426_34
- Track 12 : YDN12_30
- Track 13 : Abt2graduatex2_29

Summary of Final Annotations (See graph section above for start numbers):

The start number called the most often in the published annotations is 17, it was called in 30 of the 31 non-draft genes in the pham.

Genes that call this "Most Annotated" start:

- Abt2graduatex2_29, Asis_28, BabyGotBac_28, BayC_28, Dennebes_50, Fabian_46, FlowerPower_49, Geostin_44, Gremlin23_49, HaugeAnator_49, Immanuel3_49, JPandJE_50, Kumquat_47, Maih_28, Manuel_46, Olicious_49, Percastrophe_49, RainyPolka_29, RetrieverFever_49, Rideau_51, Romero_49, RosePharie_49, Salete_28, Stella_51, TP1604_28, ToriToki_49, Treat_49, Vorvolakos_49, WRightOn_50, Xkcd426_34, YDN12_30, Zeigle_47, ZooBear_49,

Genes that have the "Most Annotated" start but do not call it:

-

Genes that do not have the "Most Annotated" start:

- Mischief19_38,

Summary by start number:

Start 12:

- Found in 1 of 34 (2.9%) of genes in pham
- Manual Annotations of this start: 1 of 31
- Called 100.0% of time when present
- Phage (with cluster) where this start called: Mischief19_38 (BG),

Start 17:

- Found in 33 of 34 (97.1%) of genes in pham
- Manual Annotations of this start: 30 of 31
- Called 100.0% of time when present
- Phage (with cluster) where this start called: Abt2graduatex2_29 (BG), Asis_28 (BG), BabyGotBac_28 (BG), BayC_28 (BG), Dennebes_50 (BF), Fabian_46 (BF), FlowerPower_49 (BF), Geostin_44 (BF), Gremlin23_49 (BF), HaugeAnator_49 (BF), Immanuel3_49 (BF), JPandJE_50 (BF), Kumquat_47 (BF), Maih_28 (BG), Manuel_46 (BF), Olicious_49 (BF), Percastrophe_49 (BF), RainyPolka_29 (BG), RetrieverFever_49 (BF), Rideau_51 (BF), Romero_49 (BF), RosePharie_49 (BF), Salete_28 (BG), Stella_51 (BF), TP1604_28 (BG), ToriToki_49 (BF), Treat_49 (BF), Vorvolakos_49 (BF), WRightOn_50 (BF), Xkcd426_34 (BG), YDN12_30 (BG), Zeigle_47 (BF), ZooBear_49 (BF),

Summary by clusters:

There are 2 clusters represented in this pham: BF, BG,

Info for manual annotations of cluster BF:

- Start number 17 was manually annotated 21 times for cluster BF.

Info for manual annotations of cluster BG:

- Start number 12 was manually annotated 1 time for cluster BG.
- Start number 17 was manually annotated 9 times for cluster BG.

Gene Information:

Gene: Abt2graduatex2_29 Start: 27424, Stop: 27657, Start Num: 17

Candidate Starts for Abt2graduatex2_29:

(4, 27064), (Start: 17 @27424 has 30 MA's), (20, 27478), (27, 27577), (32, 27625), (33, 27631),

Gene: Asis_28 Start: 26826, Stop: 27059, Start Num: 17

Candidate Starts for Asis_28:

(4, 26466), (15, 26820), (Start: 17 @26826 has 30 MA's), (20, 26880), (25, 26937), (27, 26979), (32, 27027), (33, 27033),

Gene: BabyGotBac_28 Start: 26826, Stop: 27059, Start Num: 17

Candidate Starts for BabyGotBac_28:

(4, 26466), (15, 26820), (Start: 17 @26826 has 30 MA's), (20, 26880), (25, 26937), (27, 26979), (32, 27027), (33, 27033),

Gene: BayC_28 Start: 26826, Stop: 27059, Start Num: 17

Candidate Starts for BayC_28:

(4, 26466), (15, 26820), (Start: 17 @26826 has 30 MA's), (20, 26880), (25, 26937), (27, 26979), (32, 27027), (33, 27033),

Gene: Dennebes_50 Start: 27480, Stop: 27677, Start Num: 17

Candidate Starts for Dennebes_50:

(11, 27357), (Start: 17 @27480 has 30 MA's), (18, 27513), (22, 27546), (27, 27615), (31, 27642),

Gene: Fabian_46 Start: 27549, Stop: 27746, Start Num: 17

Candidate Starts for Fabian_46:

(Start: 17 @27549 has 30 MA's), (20, 27600),

Gene: FlowerPower_49 Start: 27549, Stop: 27746, Start Num: 17

Candidate Starts for FlowerPower_49:

(Start: 17 @27549 has 30 MA's), (20, 27600),

Gene: Geostin_44 Start: 27549, Stop: 27746, Start Num: 17

Candidate Starts for Geostin_44:

(Start: 17 @27549 has 30 MA's), (20, 27600),

Gene: Gremlin23_49 Start: 27549, Stop: 27746, Start Num: 17

Candidate Starts for Gremlin23_49:

(Start: 17 @27549 has 30 MA's), (20, 27600),

Gene: HaugeAnator_49 Start: 27959, Stop: 28156, Start Num: 17

Candidate Starts for HaugeAnator_49:

(Start: 17 @27959 has 30 MA's), (18, 27992), (22, 28025),

Gene: Immanuel3_49 Start: 27963, Stop: 28160, Start Num: 17

Candidate Starts for Immanuel3_49:

(Start: 17 @27963 has 30 MA's), (18, 27996), (22, 28029),

Gene: JPandJE_50 Start: 28427, Stop: 28624, Start Num: 17

Candidate Starts for JPandJE_50:

(Start: 17 @28427 has 30 MA's), (18, 28460), (22, 28493),

Gene: Kumquat_47 Start: 27506, Stop: 27703, Start Num: 17

Candidate Starts for Kumquat_47:

(Start: 17 @27506 has 30 MA's), (19, 27542), (24, 27590), (30, 27665),

Gene: Maih_28 Start: 26825, Stop: 27058, Start Num: 17

Candidate Starts for Maih_28:

(4, 26465), (15, 26819), (Start: 17 @26825 has 30 MA's), (20, 26879), (25, 26936), (27, 26978), (32, 27026), (33, 27032),

Gene: Manuel_46 Start: 27594, Stop: 27791, Start Num: 17

Candidate Starts for Manuel_46:

(16, 27588), (Start: 17 @27594 has 30 MA's), (24, 27678), (30, 27753),

Gene: Mischief19_38 Start: 38880, Stop: 38572, Start Num: 12

Candidate Starts for Mischief19_38:

(Start: 12 @38880 has 1 MA's), (13, 38850), (14, 38841), (26, 38697),

Gene: Olicious_49 Start: 27959, Stop: 28156, Start Num: 17

Candidate Starts for Olicious_49:

(Start: 17 @27959 has 30 MA's), (18, 27992), (22, 28025),

Gene: Percastrophe_49 Start: 27893, Stop: 28090, Start Num: 17

Candidate Starts for Percastrophe_49:

(Start: 17 @27893 has 30 MA's), (18, 27926), (22, 27959),

Gene: RainyPolka_29 Start: 27290, Stop: 27523, Start Num: 17

Candidate Starts for RainyPolka_29:

(4, 26930), (15, 27284), (Start: 17 @27290 has 30 MA's), (20, 27344), (27, 27443), (32, 27491), (33, 27497),

Gene: RetrieverFever_49 Start: 27549, Stop: 27746, Start Num: 17

Candidate Starts for RetrieverFever_49:

(Start: 17 @27549 has 30 MA's), (20, 27600),

Gene: Rideau_51 Start: 27480, Stop: 27677, Start Num: 17

Candidate Starts for Rideau_51:

(11, 27357), (Start: 17 @27480 has 30 MA's), (18, 27513), (22, 27546), (27, 27615), (31, 27642),

Gene: Romero_49 Start: 27952, Stop: 28149, Start Num: 17

Candidate Starts for Romero_49:

(Start: 17 @27952 has 30 MA's), (18, 27985), (22, 28018),

Gene: RosePharie_49 Start: 28196, Stop: 28393, Start Num: 17

Candidate Starts for RosePharie_49:

(5, 27917), (6, 27941), (7, 27974), (8, 27998), (9, 28043), (10, 28046), (Start: 17 @28196 has 30 MA's), (24, 28280), (30, 28355),

Gene: Salete_28 Start: 26826, Stop: 27059, Start Num: 17

Candidate Starts for Salete_28:

(4, 26466), (15, 26820), (Start: 17 @26826 has 30 MA's), (20, 26880), (25, 26937), (27, 26979), (32, 27027), (33, 27033),

Gene: Stella_51 Start: 28187, Stop: 28384, Start Num: 17

Candidate Starts for Stella_51:

(Start: 17 @28187 has 30 MA's), (18, 28220), (31, 28349),

Gene: TP1604_28 Start: 26826, Stop: 27059, Start Num: 17

Candidate Starts for TP1604_28:

(4, 26466), (15, 26820), (Start: 17 @26826 has 30 MA's), (20, 26880), (25, 26937), (27, 26979), (32, 27027), (33, 27033),

Gene: ToriToki_49 Start: 27955, Stop: 28152, Start Num: 17

Candidate Starts for ToriToki_49:

(Start: 17 @27955 has 30 MA's), (18, 27988), (22, 28021),

Gene: Treat_49 Start: 27896, Stop: 28093, Start Num: 17

Candidate Starts for Treat_49:

(Start: 17 @27896 has 30 MA's), (18, 27929), (22, 27962),

Gene: Vorvolakos_49 Start: 27548, Stop: 27745, Start Num: 17

Candidate Starts for Vorvolakos_49:
(Start: 17 @27548 has 30 MA's), (20, 27599),

Gene: WRightOn_50 Start: 27662, Stop: 27859, Start Num: 17
Candidate Starts for WRightOn_50:
(Start: 17 @27662 has 30 MA's), (19, 27698), (24, 27746), (30, 27821),

Gene: Xkcd426_34 Start: 34271, Stop: 34501, Start Num: 17
Candidate Starts for Xkcd426_34:
(1, 33653), (2, 33683), (3, 33731), (15, 34262), (Start: 17 @34271 has 30 MA's), (18, 34307), (20, 34325), (21, 34343), (23, 34367), (28, 34427), (29, 34439),

Gene: YDN12_30 Start: 26792, Stop: 27025, Start Num: 17
Candidate Starts for YDN12_30:
(15, 26786), (Start: 17 @26792 has 30 MA's), (20, 26846), (25, 26903), (27, 26945), (32, 26993), (33, 26999),

Gene: Zeigle_47 Start: 27506, Stop: 27703, Start Num: 17
Candidate Starts for Zeigle_47:
(Start: 17 @27506 has 30 MA's), (19, 27542), (24, 27590), (30, 27665),

Gene: ZooBear_49 Start: 27959, Stop: 28156, Start Num: 17
Candidate Starts for ZooBear_49:
(Start: 17 @27959 has 30 MA's), (18, 27992), (22, 28025),