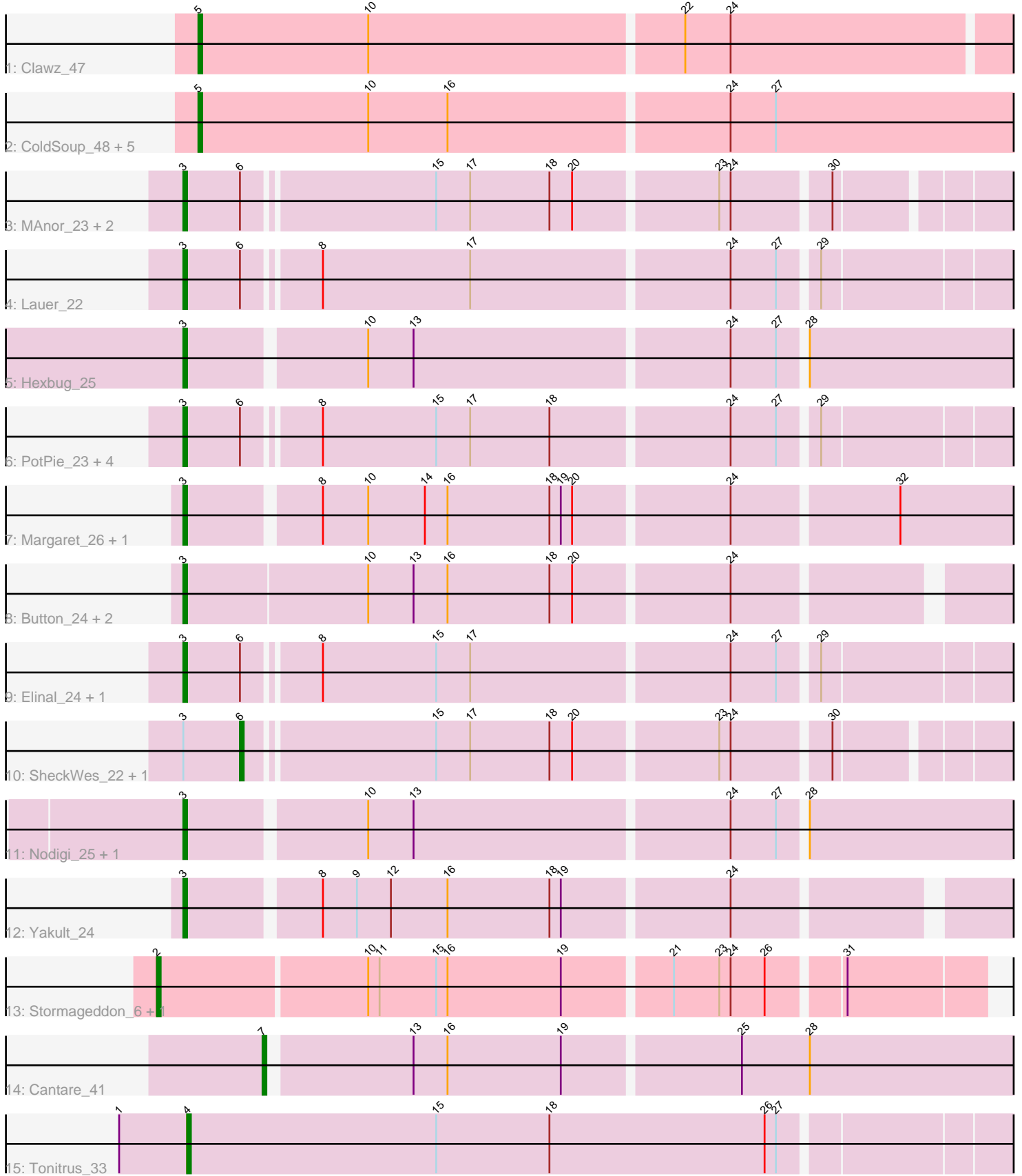


Pham 196700



Note: Tracks are now grouped by subcluster and scaled. Switching in subcluster is indicated by changes in track color. Track scale is now set by default to display the region 30 bp upstream of start 1 to 30 bp downstream of the last possible start. If this default region is judged to be packed too tightly with annotated starts, the track will be further scaled to only show that region of the ORF with annotated starts. This action will be indicated by adding "Zoomed" to the title. For starts, yellow indicates the location of called starts comprised solely of Glimmer/GeneMark auto-annotations, green indicates the location of called starts with at least 1 manual gene annotation.

Pham 196700 Report

This analysis was run 12/09/24 on database version 580.

Pham number 196700 has 33 members, 5 are drafts.

Phages represented in each track:

- Track 1 : Clawz_47
- Track 2 : ColdSoup_48, KingstonB_48, Soos_43, DonTron_47, Jollymon_48, Sting_46
- Track 3 : MAnor_23, Pons_23, Mayweather_24
- Track 4 : Lauer_22
- Track 5 : Hexbug_25
- Track 6 : PotPie_23, Vine_24, BigChungus_22, SummitAcademy_22, Feastonyeet_22
- Track 7 : Margaret_26, RanchParmCat_26
- Track 8 : Button_24, Jamzy_26, GiKK_26
- Track 9 : Elinal_24, KayGee_23
- Track 10 : SheckWes_22, CherryonLim_24
- Track 11 : Nodigi_25, Orla_25
- Track 12 : Yakult_24
- Track 13 : Stormageddon_6, RedWattleHog_6
- Track 14 : Cantare_41
- Track 15 : Tonitrus_33

Summary of Final Annotations (See graph section above for start numbers):

The start number called the most often in the published annotations is 3, it was called in 19 of the 28 non-draft genes in the pham.

Genes that call this "Most Annotated" start:

- BigChungus_22, Button_24, Elinal_24, Feastonyeet_22, GiKK_26, Hexbug_25, Jamzy_26, KayGee_23, Lauer_22, MAnor_23, Margaret_26, Mayweather_24, Nodigi_25, Orla_25, Pons_23, PotPie_23, RanchParmCat_26, SummitAcademy_22, Vine_24, Yakult_24,

Genes that have the "Most Annotated" start but do not call it:

- CherryonLim_24, SheckWes_22,

Genes that do not have the "Most Annotated" start:

- Cantare_41, Clawz_47, ColdSoup_48, DonTron_47, Jollymon_48, KingstonB_48, RedWattleHog_6, Soos_43, Sting_46, Stormageddon_6, Tonitrus_33,

Summary by start number:

Start 2:

- Found in 2 of 33 (6.1%) of genes in pham
- Manual Annotations of this start: 2 of 28
- Called 100.0% of time when present
- Phage (with cluster) where this start called: RedWattleHog_6 (DX), Stormageddon_6 (DX),

Start 3:

- Found in 22 of 33 (66.7%) of genes in pham
- Manual Annotations of this start: 19 of 28
- Called 90.9% of time when present
- Phage (with cluster) where this start called: BigChungus_22 (CT), Button_24 (CT), Elinal_24 (CT), Feastonyeet_22 (CT), GiKK_26 (CT), Hexbug_25 (CT), Jamzy_26 (CT), KayGee_23 (CT), Lauer_22 (CT), MAnor_23 (CT), Margaret_26 (CT), Mayweather_24 (CT), Nodigi_25 (CT), Orla_25 (CT), Pons_23 (CT), PotPie_23 (CT), RanchParmCat_26 (CT), SummitAcademy_22 (CT), Vine_24 (CT), Yakult_24 (CT),

Start 4:

- Found in 1 of 33 (3.0%) of genes in pham
- Manual Annotations of this start: 1 of 28
- Called 100.0% of time when present
- Phage (with cluster) where this start called: Tonitrus_33 (singleton),

Start 5:

- Found in 7 of 33 (21.2%) of genes in pham
- Manual Annotations of this start: 3 of 28
- Called 100.0% of time when present
- Phage (with cluster) where this start called: Clawz_47 (CP), ColdSoup_48 (CP), DonTron_47 (CP), Jollymon_48 (CP), KingstonB_48 (CP), Soos_43 (CP), Sting_46 (CP),

Start 6:

- Found in 13 of 33 (39.4%) of genes in pham
- Manual Annotations of this start: 2 of 28
- Called 15.4% of time when present
- Phage (with cluster) where this start called: CherryonLim_24 (CT), SheckWes_22 (CT),

Start 7:

- Found in 1 of 33 (3.0%) of genes in pham
- Manual Annotations of this start: 1 of 28
- Called 100.0% of time when present
- Phage (with cluster) where this start called: Cantare_41 (singleton),

Summary by clusters:

There are 4 clusters represented in this pham: singleton, CP, DX, CT,

Info for manual annotations of cluster CP:

- Start number 5 was manually annotated 3 times for cluster CP.

Info for manual annotations of cluster CT:

- Start number 3 was manually annotated 19 times for cluster CT.
- Start number 6 was manually annotated 2 times for cluster CT.

Info for manual annotations of cluster DX:

- Start number 2 was manually annotated 2 times for cluster DX.

Gene Information:

Gene: BigChungus_22 Start: 19520, Stop: 19759, Start Num: 3

Candidate Starts for BigChungus_22:

(Start: 3 @19520 has 19 MA's), (Start: 6 @19535 has 2 MA's), (8, 19553), (15, 19583), (17, 19592), (18, 19613), (24, 19658), (27, 19670), (29, 19679),

Gene: Button_24 Start: 18830, Stop: 19045, Start Num: 3

Candidate Starts for Button_24:

(Start: 3 @18830 has 19 MA's), (10, 18878), (13, 18890), (16, 18899), (18, 18926), (20, 18932), (24, 18971),

Gene: Cantare_41 Start: 39115, Stop: 39327, Start Num: 7

Candidate Starts for Cantare_41:

(Start: 7 @39115 has 1 MA's), (13, 39151), (16, 39160), (19, 39190), (25, 39235), (28, 39253),

Gene: CherryonLim_24 Start: 20248, Stop: 20469, Start Num: 6

Candidate Starts for CherryonLim_24:

(Start: 3 @20233 has 19 MA's), (Start: 6 @20248 has 2 MA's), (15, 20296), (17, 20305), (18, 20326), (20, 20332), (23, 20368), (24, 20371), (30, 20395),

Gene: Clawz_47 Start: 26167, Stop: 26412, Start Num: 5

Candidate Starts for Clawz_47:

(Start: 5 @26167 has 3 MA's), (10, 26212), (22, 26293), (24, 26305),

Gene: ColdSoup_48 Start: 26255, Stop: 26506, Start Num: 5

Candidate Starts for ColdSoup_48:

(Start: 5 @26255 has 3 MA's), (10, 26300), (16, 26321), (24, 26393), (27, 26405),

Gene: DonTron_47 Start: 26295, Stop: 26546, Start Num: 5

Candidate Starts for DonTron_47:

(Start: 5 @26295 has 3 MA's), (10, 26340), (16, 26361), (24, 26433), (27, 26445),

Gene: Elinal_24 Start: 19473, Stop: 19712, Start Num: 3

Candidate Starts for Elinal_24:

(Start: 3 @19473 has 19 MA's), (Start: 6 @19488 has 2 MA's), (8, 19506), (15, 19536), (17, 19545), (24, 19611), (27, 19623), (29, 19632),

Gene: Feastonyeet_22 Start: 19520, Stop: 19759, Start Num: 3

Candidate Starts for Feastonyeet_22:

(Start: 3 @19520 has 19 MA's), (Start: 6 @19535 has 2 MA's), (8, 19553), (15, 19583), (17, 19592), (18, 19613), (24, 19658), (27, 19670), (29, 19679),

Gene: GiKK_26 Start: 19129, Stop: 19344, Start Num: 3

Candidate Starts for GiKK_26:

(Start: 3 @19129 has 19 MA's), (10, 19177), (13, 19189), (16, 19198), (18, 19225), (20, 19231), (24, 19270),

Gene: Hexbug_25 Start: 19814, Stop: 20032, Start Num: 3

Candidate Starts for Hexbug_25:

(Start: 3 @19814 has 19 MA's), (10, 19859), (13, 19871), (24, 19952), (27, 19964), (28, 19970),

Gene: Jamzy_26 Start: 19143, Stop: 19358, Start Num: 3

Candidate Starts for Jamzy_26:

(Start: 3 @19143 has 19 MA's), (10, 19191), (13, 19203), (16, 19212), (18, 19239), (20, 19245), (24, 19284),

Gene: Jollymon_48 Start: 26255, Stop: 26506, Start Num: 5

Candidate Starts for Jollymon_48:

(Start: 5 @26255 has 3 MA's), (10, 26300), (16, 26321), (24, 26393), (27, 26405),

Gene: KayGee_23 Start: 19473, Stop: 19712, Start Num: 3

Candidate Starts for KayGee_23:

(Start: 3 @19473 has 19 MA's), (Start: 6 @19488 has 2 MA's), (8, 19506), (15, 19536), (17, 19545), (24, 19611), (27, 19623), (29, 19632),

Gene: KingstonB_48 Start: 25733, Stop: 25984, Start Num: 5

Candidate Starts for KingstonB_48:

(Start: 5 @25733 has 3 MA's), (10, 25778), (16, 25799), (24, 25871), (27, 25883),

Gene: Lauer_22 Start: 19523, Stop: 19762, Start Num: 3

Candidate Starts for Lauer_22:

(Start: 3 @19523 has 19 MA's), (Start: 6 @19538 has 2 MA's), (8, 19556), (17, 19595), (24, 19661), (27, 19673), (29, 19682),

Gene: MAnor_23 Start: 19493, Stop: 19729, Start Num: 3

Candidate Starts for MAnor_23:

(Start: 3 @19493 has 19 MA's), (Start: 6 @19508 has 2 MA's), (15, 19556), (17, 19565), (18, 19586), (20, 19592), (23, 19628), (24, 19631), (30, 19655),

Gene: Margaret_26 Start: 19510, Stop: 19728, Start Num: 3

Candidate Starts for Margaret_26:

(Start: 3 @19510 has 19 MA's), (8, 19543), (10, 19555), (14, 19570), (16, 19576), (18, 19603), (19, 19606), (20, 19609), (24, 19648), (32, 19690),

Gene: Mayweather_24 Start: 20109, Stop: 20345, Start Num: 3

Candidate Starts for Mayweather_24:

(Start: 3 @20109 has 19 MA's), (Start: 6 @20124 has 2 MA's), (15, 20172), (17, 20181), (18, 20202), (20, 20208), (23, 20244), (24, 20247), (30, 20271),

Gene: Nodigi_25 Start: 19783, Stop: 20001, Start Num: 3

Candidate Starts for Nodigi_25:

(Start: 3 @19783 has 19 MA's), (10, 19828), (13, 19840), (24, 19921), (27, 19933), (28, 19939),

Gene: Orla_25 Start: 19787, Stop: 20005, Start Num: 3
Candidate Starts for Orla_25:
(Start: 3 @19787 has 19 MA's), (10, 19832), (13, 19844), (24, 19925), (27, 19937), (28, 19943),

Gene: Pons_23 Start: 19481, Stop: 19717, Start Num: 3
Candidate Starts for Pons_23:
(Start: 3 @19481 has 19 MA's), (Start: 6 @19496 has 2 MA's), (15, 19544), (17, 19553), (18, 19574),
(20, 19580), (23, 19616), (24, 19619), (30, 19643),

Gene: PotPie_23 Start: 20339, Stop: 20578, Start Num: 3
Candidate Starts for PotPie_23:
(Start: 3 @20339 has 19 MA's), (Start: 6 @20354 has 2 MA's), (8, 20372), (15, 20402), (17, 20411),
(18, 20432), (24, 20477), (27, 20489), (29, 20498),

Gene: RanchParmCat_26 Start: 19510, Stop: 19728, Start Num: 3
Candidate Starts for RanchParmCat_26:
(Start: 3 @19510 has 19 MA's), (8, 19543), (10, 19555), (14, 19570), (16, 19576), (18, 19603), (19,
19606), (20, 19609), (24, 19648), (32, 19690),

Gene: RedWattleHog_6 Start: 3833, Stop: 4042, Start Num: 2
Candidate Starts for RedWattleHog_6:
(Start: 2 @3833 has 2 MA's), (10, 3887), (11, 3890), (15, 3905), (16, 3908), (19, 3938), (21, 3965), (23,
3977), (24, 3980), (26, 3989), (31, 4007),

Gene: SheckWes_22 Start: 19493, Stop: 19714, Start Num: 6
Candidate Starts for SheckWes_22:
(Start: 3 @19478 has 19 MA's), (Start: 6 @19493 has 2 MA's), (15, 19541), (17, 19550), (18, 19571),
(20, 19577), (23, 19613), (24, 19616), (30, 19640),

Gene: Soos_43 Start: 25462, Stop: 25713, Start Num: 5
Candidate Starts for Soos_43:
(Start: 5 @25462 has 3 MA's), (10, 25507), (16, 25528), (24, 25600), (27, 25612),

Gene: Sting_46 Start: 25901, Stop: 26152, Start Num: 5
Candidate Starts for Sting_46:
(Start: 5 @25901 has 3 MA's), (10, 25946), (16, 25967), (24, 26039), (27, 26051),

Gene: Stormageddon_6 Start: 3833, Stop: 4042, Start Num: 2
Candidate Starts for Stormageddon_6:
(Start: 2 @3833 has 2 MA's), (10, 3887), (11, 3890), (15, 3905), (16, 3908), (19, 3938), (21, 3965), (23,
3977), (24, 3980), (26, 3989), (31, 4007),

Gene: SummitAcademy_22 Start: 19551, Stop: 19790, Start Num: 3
Candidate Starts for SummitAcademy_22:
(Start: 3 @19551 has 19 MA's), (Start: 6 @19566 has 2 MA's), (8, 19584), (15, 19614), (17, 19623),
(18, 19644), (24, 19689), (27, 19701), (29, 19710),

Gene: Tonitrus_33 Start: 22454, Stop: 22666, Start Num: 4
Candidate Starts for Tonitrus_33:
(1, 22436), (Start: 4 @22454 has 1 MA's), (15, 22520), (18, 22550), (26, 22607), (27, 22610),

Gene: Vine_24 Start: 20486, Stop: 20725, Start Num: 3

Candidate Starts for Vine_24:

(Start: 3 @20486 has 19 MA's), (Start: 6 @20501 has 2 MA's), (8, 20519), (15, 20549), (17, 20558), (18, 20579), (24, 20624), (27, 20636), (29, 20645),

Gene: Yakult_24 Start: 19364, Stop: 19576, Start Num: 3

Candidate Starts for Yakult_24:

(Start: 3 @19364 has 19 MA's), (8, 19397), (9, 19406), (12, 19415), (16, 19430), (18, 19457), (19, 19460), (24, 19502),