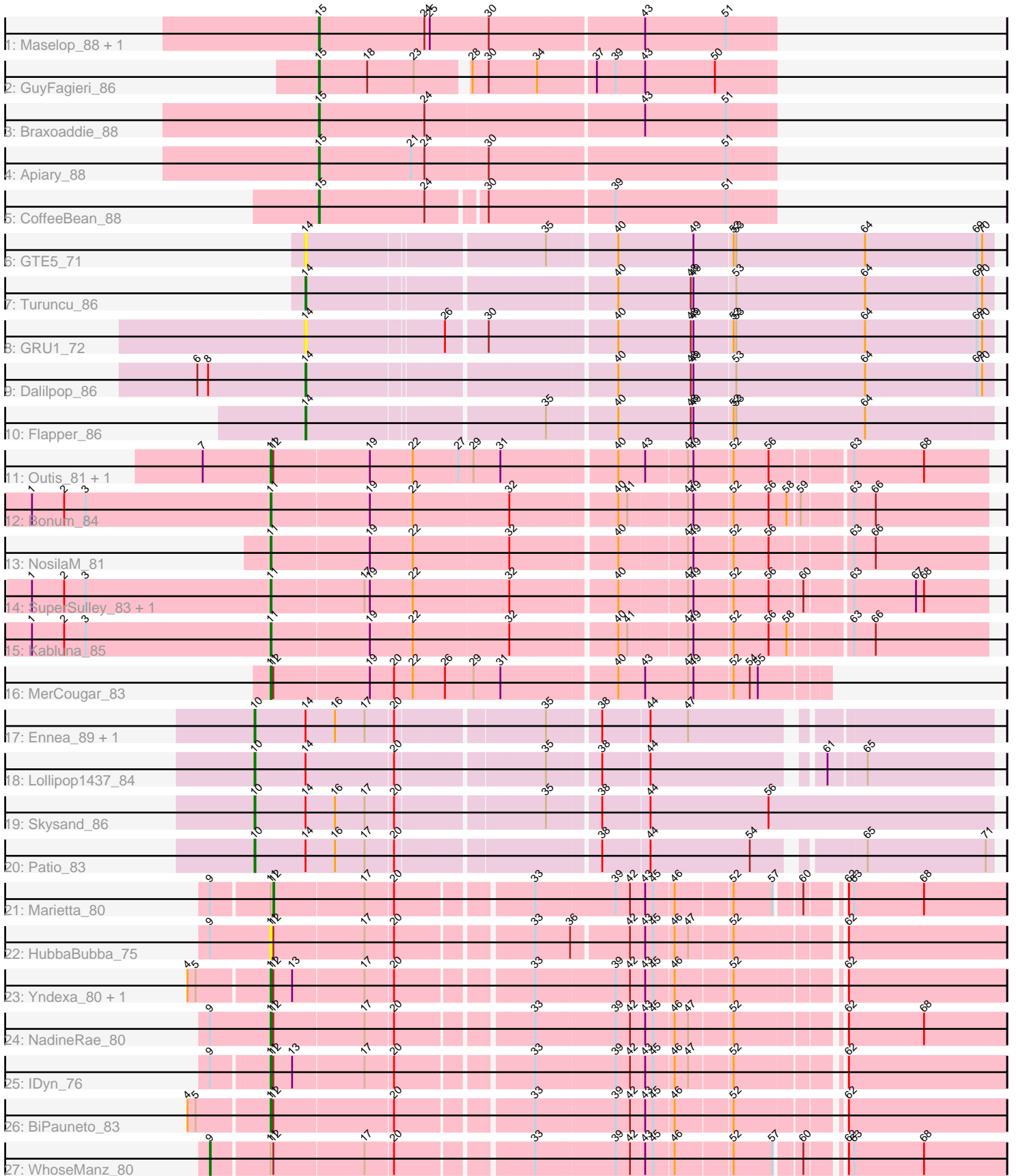


Pham 196712



Note: Tracks are now grouped by subcluster and scaled. Switching in subcluster is indicated by changes in track color. Track scale is now set by default to display the region 30 bp upstream of start 1 to 30 bp downstream of the last possible start. If this default region is judged to be packed too tightly with annotated starts, the track will be further scaled to only show that region of the ORF with annotated starts. This action will be indicated by adding "Zoomed" to the title. For starts, yellow indicates the location of called starts comprised solely of Glimmer/GeneMark auto-annotations, green indicates the location of called starts with at least 1 manual gene annotation.

Pham 196712 Report

This analysis was run 12/09/24 on database version 580.

Pham number 196712 has 32 members, 3 are drafts.

Phages represented in each track:

- Track 1 : Maselop_88, Polyuyuki_87
- Track 2 : GuyFagieri_86
- Track 3 : Braxoaddie_88
- Track 4 : Apiary_88
- Track 5 : CoffeeBean_88
- Track 6 : GTE5_71
- Track 7 : Turuncu_86
- Track 8 : GRU1_72
- Track 9 : Dalilpop_86
- Track 10 : Flapper_86
- Track 11 : Outis_81, StarStruck_81
- Track 12 : Bonum_84
- Track 13 : NosilaM_81
- Track 14 : SuperSulley_83, Buggaboo_83
- Track 15 : Kabluna_85
- Track 16 : MerCougar_83
- Track 17 : Ennea_89, Float294_83
- Track 18 : Lollipop1437_84
- Track 19 : Skysand_86
- Track 20 : Patio_83
- Track 21 : Marietta_80
- Track 22 : HubbaBubba_75
- Track 23 : Yndexa_80, Sukkupi_80
- Track 24 : NadineRae_80
- Track 25 : IDyn_76
- Track 26 : BiPauneto_83
- Track 27 : WhoseManz_80

Summary of Final Annotations (See graph section above for start numbers):

The start number called the most often in the published annotations is 11, it was called in 13 of the 29 non-draft genes in the pham.

Genes that call this "Most Annotated" start:

- BiPauneto_83, Bonum_84, Buggaboo_83, HubbaBubba_75, IDyn_76, Kabluna_85, MerCougar_83, NadineRae_80, NosilaM_81, Outis_81, StarStruck_81, Sukkupi_80, SuperSulley_83, Yndexa_80,

Genes that have the "Most Annotated" start but do not call it:

- Marietta_80, WhoseManz_80,

Genes that do not have the "Most Annotated" start:

- Apiary_88, Braxoaddie_88, CoffeeBean_88, Dalilpop_86, Ennea_89, Flapper_86, Float294_83, GRU1_72, GTE5_71, GuyFagieri_86, Lollipop1437_84, Maselop_88, Patio_83, Polyyuki_87, Skysand_86, Turuncu_86,

Summary by start number:

Start 9:

- Found in 5 of 32 (15.6%) of genes in pham
- Manual Annotations of this start: 1 of 29
- Called 20.0% of time when present
- Phage (with cluster) where this start called: WhoseManz_80 (CR4),

Start 10:

- Found in 5 of 32 (15.6%) of genes in pham
- Manual Annotations of this start: 5 of 29
- Called 100.0% of time when present
- Phage (with cluster) where this start called: Ennea_89 (CR3), Float294_83 (CR3), Lollipop1437_84 (CR3), Patio_83 (CR3), Skysand_86 (CR3),

Start 11:

- Found in 16 of 32 (50.0%) of genes in pham
- Manual Annotations of this start: 13 of 29
- Called 87.5% of time when present
- Phage (with cluster) where this start called: BiPauneto_83 (CR4), Bonum_84 (CR2), Buggaboo_83 (CR2), HubbaBubba_75 (CR4), IDyn_76 (CR4), Kabluna_85 (CR2), MerCougar_83 (CR2), NadineRae_80 (CR4), NosilaM_81 (CR2), Outis_81 (CR2), StarStruck_81 (CR2), Sukkupi_80 (CR4), SuperSulley_83 (CR2), Yndexa_80 (CR4),

Start 12:

- Found in 11 of 32 (34.4%) of genes in pham
- Manual Annotations of this start: 1 of 29
- Called 9.1% of time when present
- Phage (with cluster) where this start called: Marietta_80 (CR4),

Start 14:

- Found in 10 of 32 (31.2%) of genes in pham
- Manual Annotations of this start: 3 of 29
- Called 50.0% of time when present
- Phage (with cluster) where this start called: Dalilpop_86 (CR1), Flapper_86 (CR1), GRU1_72 (CR1), GTE5_71 (CR1), Turuncu_86 (CR1),

Start 15:

- Found in 6 of 32 (18.8%) of genes in pham
- Manual Annotations of this start: 6 of 29
- Called 100.0% of time when present

- Phage (with cluster) where this start called: Apiary_88 (CR), Braxoaddie_88 (CR), CoffeeBean_88 (CR), GuyFagieri_86 (CR), Maselop_88 (CR), Polyuyuki_87 (CR),

Summary by clusters:

There are 5 clusters represented in this pham: CR2, CR, CR1, CR4, CR3,

Info for manual annotations of cluster CR:

- Start number 15 was manually annotated 6 times for cluster CR.

Info for manual annotations of cluster CR1:

- Start number 14 was manually annotated 3 times for cluster CR1.

Info for manual annotations of cluster CR2:

- Start number 11 was manually annotated 8 times for cluster CR2.

Info for manual annotations of cluster CR3:

- Start number 10 was manually annotated 5 times for cluster CR3.

Info for manual annotations of cluster CR4:

- Start number 9 was manually annotated 1 time for cluster CR4.
- Start number 11 was manually annotated 5 times for cluster CR4.
- Start number 12 was manually annotated 1 time for cluster CR4.

Gene Information:

Gene: Apiary_88 Start: 61595, Stop: 62092, Start Num: 15

Candidate Starts for Apiary_88:

(Start: 15 @61595 has 6 MA's), (21, 61697), (24, 61712), (30, 61781), (51, 62039),

Gene: BiPauneto_83 Start: 59069, Stop: 59824, Start Num: 11

Candidate Starts for BiPauneto_83:

(4, 58985), (5, 58994), (Start: 11 @59069 has 13 MA's), (Start: 12 @59072 has 1 MA's), (20, 59201), (33, 59336), (39, 59423), (42, 59438), (43, 59453), (45, 59462), (46, 59483), (52, 59543), (62, 59648),

Gene: Bonum_84 Start: 60988, Stop: 61746, Start Num: 11

Candidate Starts for Bonum_84:

(1, 60724), (2, 60760), (3, 60784), (Start: 11 @60988 has 13 MA's), (19, 61096), (22, 61144), (32, 61249), (40, 61360), (41, 61369), (47, 61432), (49, 61438), (52, 61477), (56, 61516), (58, 61534), (59, 61546), (63, 61597), (66, 61621),

Gene: Braxoaddie_88 Start: 61593, Stop: 62090, Start Num: 15

Candidate Starts for Braxoaddie_88:

(Start: 15 @61593 has 6 MA's), (24, 61710), (43, 61947), (51, 62037),

Gene: Buggaboo_83 Start: 61523, Stop: 62281, Start Num: 11

Candidate Starts for Buggaboo_83:

(1, 61259), (2, 61295), (3, 61319), (Start: 11 @61523 has 13 MA's), (17, 61625), (19, 61631), (22, 61679), (32, 61784), (40, 61895), (47, 61967), (49, 61973), (52, 62012), (56, 62051), (60, 62084), (63, 62132), (67, 62201), (68, 62210),

Gene: CoffeeBean_88 Start: 61550, Stop: 62035, Start Num: 15
Candidate Starts for CoffeeBean_88:
(Start: 15 @61550 has 6 MA's), (24, 61667), (30, 61724), (39, 61859), (51, 61982),

Gene: Dalilpop_86 Start: 61784, Stop: 62515, Start Num: 14
Candidate Starts for Dalilpop_86:
(6, 61664), (8, 61676), (Start: 14 @61784 has 3 MA's), (40, 62102), (48, 62183), (49, 62186), (53, 62231), (64, 62375), (69, 62498), (70, 62504),

Gene: Ennea_89 Start: 61940, Stop: 62692, Start Num: 10
Candidate Starts for Ennea_89:
(Start: 10 @61940 has 5 MA's), (Start: 14 @61994 has 3 MA's), (16, 62027), (17, 62060), (20, 62090), (35, 62243), (38, 62294), (44, 62345), (47, 62387),

Gene: Flapper_86 Start: 61618, Stop: 62349, Start Num: 14
Candidate Starts for Flapper_86:
(Start: 14 @61618 has 3 MA's), (35, 61867), (40, 61936), (48, 62017), (49, 62020), (52, 62062), (53, 62065), (64, 62209),

Gene: Float294_83 Start: 61844, Stop: 62596, Start Num: 10
Candidate Starts for Float294_83:
(Start: 10 @61844 has 5 MA's), (Start: 14 @61898 has 3 MA's), (16, 61931), (17, 61964), (20, 61994), (35, 62147), (38, 62198), (44, 62249), (47, 62291),

Gene: GRU1_72 Start: 53237, Stop: 53968, Start Num: 14
Candidate Starts for GRU1_72:
(Start: 14 @53237 has 3 MA's), (26, 53381), (30, 53423), (40, 53555), (48, 53636), (49, 53639), (52, 53681), (53, 53684), (64, 53828), (69, 53951), (70, 53957),

Gene: GTE5_71 Start: 54128, Stop: 54859, Start Num: 14
Candidate Starts for GTE5_71:
(Start: 14 @54128 has 3 MA's), (35, 54377), (40, 54446), (49, 54530), (52, 54572), (53, 54575), (64, 54719), (69, 54842), (70, 54848),

Gene: GuyFagieri_86 Start: 61175, Stop: 61660, Start Num: 15
Candidate Starts for GuyFagieri_86:
(Start: 15 @61175 has 6 MA's), (18, 61229), (23, 61280), (28, 61331), (30, 61349), (34, 61403), (37, 61463), (39, 61484), (43, 61517), (50, 61595),

Gene: HubbaBubba_75 Start: 55694, Stop: 56443, Start Num: 11
Candidate Starts for HubbaBubba_75:
(Start: 9 @55628 has 1 MA's), (Start: 11 @55694 has 13 MA's), (Start: 12 @55697 has 1 MA's), (17, 55796), (20, 55826), (33, 55961), (36, 56000), (42, 56057), (43, 56072), (45, 56081), (46, 56102), (47, 56117), (52, 56162), (62, 56267),

Gene: IDyn_76 Start: 56063, Stop: 56818, Start Num: 11
Candidate Starts for IDyn_76:
(Start: 9 @56006 has 1 MA's), (Start: 11 @56063 has 13 MA's), (Start: 12 @56066 has 1 MA's), (13, 56087), (17, 56165), (20, 56195), (33, 56330), (39, 56417), (42, 56432), (43, 56447), (45, 56456), (46, 56477), (47, 56492), (52, 56537), (62, 56642),

Gene: Kabluna_85 Start: 60338, Stop: 61096, Start Num: 11
Candidate Starts for Kabluna_85:

(1, 60074), (2, 60110), (3, 60134), (Start: 11 @60338 has 13 MA's), (19, 60446), (22, 60494), (32, 60599), (40, 60710), (41, 60719), (47, 60782), (49, 60788), (52, 60827), (56, 60866), (58, 60884), (63, 60947), (66, 60971),

Gene: Lollipop1437_84 Start: 61636, Stop: 62388, Start Num: 10

Candidate Starts for Lollipop1437_84:

(Start: 10 @61636 has 5 MA's), (Start: 14 @61690 has 3 MA's), (20, 61786), (35, 61939), (38, 61990), (44, 62041), (61, 62212), (65, 62248),

Gene: Marietta_80 Start: 56972, Stop: 57715, Start Num: 12

Candidate Starts for Marietta_80:

(Start: 9 @56909 has 1 MA's), (Start: 11 @56969 has 13 MA's), (Start: 12 @56972 has 1 MA's), (17, 57071), (20, 57101), (33, 57236), (39, 57323), (42, 57338), (43, 57353), (45, 57362), (46, 57383), (52, 57443), (57, 57485), (60, 57506), (62, 57539), (63, 57545), (68, 57623),

Gene: Maselop_88 Start: 61601, Stop: 62101, Start Num: 15

Candidate Starts for Maselop_88:

(Start: 15 @61601 has 6 MA's), (24, 61718), (25, 61724), (30, 61790), (43, 61958), (51, 62048),

Gene: MerCougar_83 Start: 61964, Stop: 62554, Start Num: 11

Candidate Starts for MerCougar_83:

(Start: 11 @61964 has 13 MA's), (Start: 12 @61967 has 1 MA's), (19, 62072), (20, 62099), (22, 62120), (26, 62156), (29, 62186), (31, 62216), (40, 62336), (43, 62363), (47, 62411), (49, 62417), (52, 62456), (54, 62474), (55, 62483),

Gene: NadineRae_80 Start: 56569, Stop: 57324, Start Num: 11

Candidate Starts for NadineRae_80:

(Start: 9 @56503 has 1 MA's), (Start: 11 @56569 has 13 MA's), (Start: 12 @56572 has 1 MA's), (17, 56671), (20, 56701), (33, 56836), (39, 56923), (42, 56938), (43, 56953), (45, 56962), (46, 56983), (47, 56998), (52, 57043), (62, 57148), (68, 57232),

Gene: NosilaM_81 Start: 60594, Stop: 61352, Start Num: 11

Candidate Starts for NosilaM_81:

(Start: 11 @60594 has 13 MA's), (19, 60702), (22, 60750), (32, 60855), (40, 60966), (47, 61038), (49, 61044), (52, 61083), (56, 61122), (63, 61203), (66, 61227),

Gene: Outis_81 Start: 61065, Stop: 61823, Start Num: 11

Candidate Starts for Outis_81:

(7, 60990), (Start: 11 @61065 has 13 MA's), (Start: 12 @61068 has 1 MA's), (19, 61173), (22, 61221), (27, 61272), (29, 61287), (31, 61317), (40, 61437), (43, 61464), (47, 61509), (49, 61515), (52, 61554), (56, 61593), (63, 61674), (68, 61752),

Gene: Patio_83 Start: 60834, Stop: 61592, Start Num: 10

Candidate Starts for Patio_83:

(Start: 10 @60834 has 5 MA's), (Start: 14 @60888 has 3 MA's), (16, 60921), (17, 60954), (20, 60984), (38, 61188), (44, 61239), (54, 61350), (65, 61452), (71, 61584),

Gene: Polyzuki_87 Start: 61611, Stop: 62111, Start Num: 15

Candidate Starts for Polyzuki_87:

(Start: 15 @61611 has 6 MA's), (24, 61728), (25, 61734), (30, 61800), (43, 61968), (51, 62058),

Gene: Skysand_86 Start: 61757, Stop: 62545, Start Num: 10

Candidate Starts for Skysand_86:

(Start: 10 @61757 has 5 MA's), (Start: 14 @61811 has 3 MA's), (16, 61844), (17, 61877), (20, 61907), (35, 62060), (38, 62111), (44, 62162), (56, 62294),

Gene: StarStruck_81 Start: 61065, Stop: 61823, Start Num: 11

Candidate Starts for StarStruck_81:

(7, 60990), (Start: 11 @61065 has 13 MA's), (Start: 12 @61068 has 1 MA's), (19, 61173), (22, 61221), (27, 61272), (29, 61287), (31, 61317), (40, 61437), (43, 61464), (47, 61509), (49, 61515), (52, 61554), (56, 61593), (63, 61674), (68, 61752),

Gene: Sukkupi_80 Start: 58610, Stop: 59365, Start Num: 11

Candidate Starts for Sukkupi_80:

(4, 58526), (5, 58535), (Start: 11 @58610 has 13 MA's), (Start: 12 @58613 has 1 MA's), (13, 58634), (17, 58712), (20, 58742), (33, 58877), (39, 58964), (42, 58979), (43, 58994), (45, 59003), (46, 59024), (52, 59084), (62, 59189),

Gene: SuperSulley_83 Start: 61523, Stop: 62281, Start Num: 11

Candidate Starts for SuperSulley_83:

(1, 61259), (2, 61295), (3, 61319), (Start: 11 @61523 has 13 MA's), (17, 61625), (19, 61631), (22, 61679), (32, 61784), (40, 61895), (47, 61967), (49, 61973), (52, 62012), (56, 62051), (60, 62084), (63, 62132), (67, 62201), (68, 62210),

Gene: Turuncu_86 Start: 61237, Stop: 61968, Start Num: 14

Candidate Starts for Turuncu_86:

(Start: 14 @61237 has 3 MA's), (40, 61555), (48, 61636), (49, 61639), (53, 61684), (64, 61828), (69, 61951), (70, 61957),

Gene: WhoseManz_80 Start: 56569, Stop: 57375, Start Num: 9

Candidate Starts for WhoseManz_80:

(Start: 9 @56569 has 1 MA's), (Start: 11 @56629 has 13 MA's), (Start: 12 @56632 has 1 MA's), (17, 56731), (20, 56761), (33, 56896), (39, 56983), (42, 56998), (43, 57013), (45, 57022), (46, 57043), (52, 57103), (57, 57145), (60, 57166), (62, 57199), (63, 57205), (68, 57283),

Gene: Yndexa_80 Start: 58610, Stop: 59365, Start Num: 11

Candidate Starts for Yndexa_80:

(4, 58526), (5, 58535), (Start: 11 @58610 has 13 MA's), (Start: 12 @58613 has 1 MA's), (13, 58634), (17, 58712), (20, 58742), (33, 58877), (39, 58964), (42, 58979), (43, 58994), (45, 59003), (46, 59024), (52, 59084), (62, 59189),