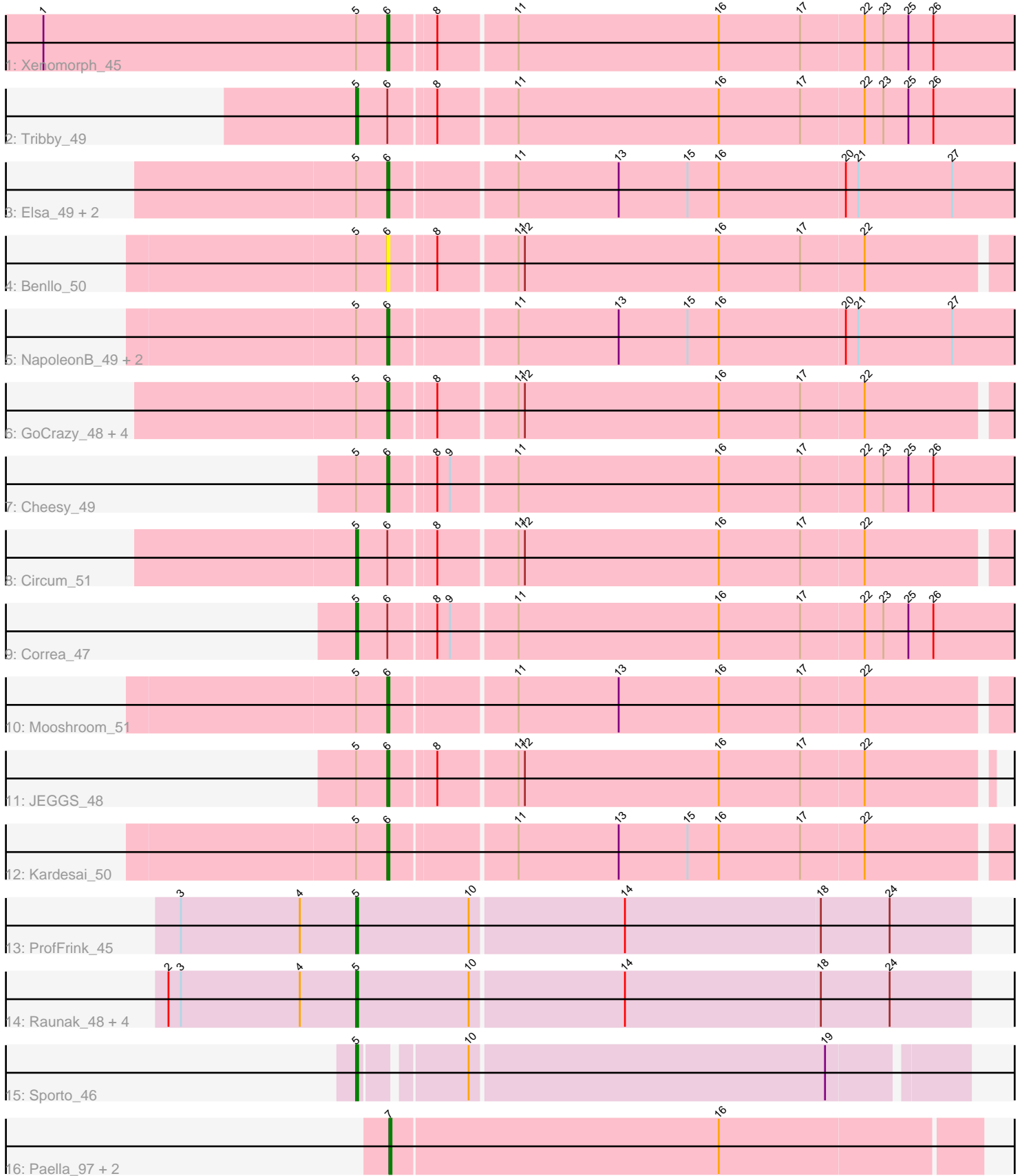


Pham 196734



Note: Tracks are now grouped by subcluster and scaled. Switching in subcluster is indicated by changes in track color. Track scale is now set by default to display the region 30 bp upstream of start 1 to 30 bp downstream of the last possible start. If this default region is judged to be packed too tightly with annotated starts, the track will be further scaled to only show that region of the ORF with annotated starts. This action will be indicated by adding "Zoomed" to the title. For starts, yellow indicates the location of called starts comprised solely of Glimmer/GeneMark auto-annotations, green indicates the location of called starts with at least 1 manual gene annotation.

Pham 196734 Report

This analysis was run 12/09/24 on database version 580.

Pham number 196734 has 30 members, 3 are drafts.

Phages represented in each track:

- Track 1 : Xenomorph_45
- Track 2 : Tribby_49
- Track 3 : Elsa_49, Arcadia_49, Nason_49
- Track 4 : Benllo_50
- Track 5 : NapoleonB_49, Dynamite_49, BenitoAntonio_49
- Track 6 : GoCrazy_48, Mudcat_46, Hankly_48, Heisenberger_48, KeaneyLin_48
- Track 7 : Cheesy_49
- Track 8 : Circum_51
- Track 9 : Correa_47
- Track 10 : Mooshroom_51
- Track 11 : JEGGS_48
- Track 12 : Kardesai_50
- Track 13 : ProfFrink_45
- Track 14 : Raunak_48, BronxBay_45, MrAaronian_45, Linda_45, Djungelskog_45
- Track 15 : Sporto_46
- Track 16 : Paella_97, Qui_97, Elver_95

Summary of Final Annotations (See graph section above for start numbers):

The start number called the most often in the published annotations is 6, it was called in 16 of the 27 non-draft genes in the pham.

Genes that call this "Most Annotated" start:

- Arcadia_49, BenitoAntonio_49, Benllo_50, Cheesy_49, Dynamite_49, Elsa_49, GoCrazy_48, Hankly_48, Heisenberger_48, JEGGS_48, Kardesai_50, KeaneyLin_48, Mooshroom_51, Mudcat_46, NapoleonB_49, Nason_49, Xenomorph_45,

Genes that have the "Most Annotated" start but do not call it:

- Circum_51, Correa_47, Tribby_49,

Genes that do not have the "Most Annotated" start:

- BronxBay_45, Djungelskog_45, Elver_95, Linda_45, MrAaronian_45, Paella_97, ProfFrink_45, Qui_97, Raunak_48, Sporto_46,

Summary by start number:

Start 5:

- Found in 27 of 30 (90.0%) of genes in pham
- Manual Annotations of this start: 9 of 27
- Called 37.0% of time when present
- Phage (with cluster) where this start called: BronxBay_45 (AW), Circum_51 (AM), Correa_47 (AM), Djungelskog_45 (AW), Linda_45 (AW), MrAaronian_45 (AW), ProfFrink_45 (AW), Raunak_48 (AW), Sporto_46 (AW), Tribby_49 (AM),

Start 6:

- Found in 20 of 30 (66.7%) of genes in pham
- Manual Annotations of this start: 16 of 27
- Called 85.0% of time when present
- Phage (with cluster) where this start called: Arcadia_49 (AM), BenitoAntonio_49 (AM), Benllo_50 (AM), Cheesy_49 (AM), Dynamite_49 (AM), Elsa_49 (AM), GoCrazy_48 (AM), Hankly_48 (AM), Heisenberger_48 (AM), JEGGS_48 (AM), Kardesai_50 (AM), KeaneyLin_48 (AM), Mooshroom_51 (AM), Mudcat_46 (AM), NapoleonB_49 (AM), Nason_49 (AM), Xenomorph_45 (AM),

Start 7:

- Found in 3 of 30 (10.0%) of genes in pham
- Manual Annotations of this start: 2 of 27
- Called 100.0% of time when present
- Phage (with cluster) where this start called: Elver_95 (FK), Paella_97 (FK), Qui_97 (FK),

Summary by clusters:

There are 3 clusters represented in this pham: FK, AM, AW,

Info for manual annotations of cluster AM:

- Start number 5 was manually annotated 3 times for cluster AM.
- Start number 6 was manually annotated 16 times for cluster AM.

Info for manual annotations of cluster AW:

- Start number 5 was manually annotated 6 times for cluster AW.

Info for manual annotations of cluster FK:

- Start number 7 was manually annotated 2 times for cluster FK.

Gene Information:

Gene: Arcadia_49 Start: 32580, Stop: 32888, Start Num: 6

Candidate Starts for Arcadia_49:

(Start: 5 @32565 has 9 MA's), (Start: 6 @32580 has 16 MA's), (11, 32637), (13, 32685), (15, 32718), (16, 32733), (20, 32793), (21, 32799), (27, 32844),

Gene: BenitoAntonio_49 Start: 32116, Stop: 32424, Start Num: 6

Candidate Starts for BenitoAntonio_49:

(Start: 5 @32101 has 9 MA's), (Start: 6 @32116 has 16 MA's), (11, 32173), (13, 32221), (15, 32254), (16, 32269), (20, 32329), (21, 32335), (27, 32380),

Gene: Benllo_50 Start: 32800, Stop: 33102, Start Num: 6

Candidate Starts for Benllo_50:

(Start: 5 @32785 has 9 MA's), (Start: 6 @32800 has 16 MA's), (8, 32821), (11, 32857), (12, 32860), (16, 32953), (17, 32992), (22, 33022),

Gene: BronxBay_45 Start: 31837, Stop: 32127, Start Num: 5

Candidate Starts for BronxBay_45:

(2, 31747), (3, 31753), (4, 31810), (Start: 5 @31837 has 9 MA's), (10, 31891), (14, 31963), (18, 32056), (24, 32089),

Gene: Cheesy_49 Start: 32301, Stop: 32609, Start Num: 6

Candidate Starts for Cheesy_49:

(Start: 5 @32286 has 9 MA's), (Start: 6 @32301 has 16 MA's), (8, 32322), (9, 32328), (11, 32358), (16, 32454), (17, 32493), (22, 32523), (23, 32532), (25, 32544), (26, 32556),

Gene: Circum_51 Start: 32976, Stop: 33293, Start Num: 5

Candidate Starts for Circum_51:

(Start: 5 @32976 has 9 MA's), (Start: 6 @32991 has 16 MA's), (8, 33012), (11, 33048), (12, 33051), (16, 33144), (17, 33183), (22, 33213),

Gene: Correa_47 Start: 31432, Stop: 31755, Start Num: 5

Candidate Starts for Correa_47:

(Start: 5 @31432 has 9 MA's), (Start: 6 @31447 has 16 MA's), (8, 31468), (9, 31474), (11, 31504), (16, 31600), (17, 31639), (22, 31669), (23, 31678), (25, 31690), (26, 31702),

Gene: Djungelskog_45 Start: 31836, Stop: 32126, Start Num: 5

Candidate Starts for Djungelskog_45:

(2, 31746), (3, 31752), (4, 31809), (Start: 5 @31836 has 9 MA's), (10, 31890), (14, 31962), (18, 32055), (24, 32088),

Gene: Dynamite_49 Start: 32516, Stop: 32824, Start Num: 6

Candidate Starts for Dynamite_49:

(Start: 5 @32501 has 9 MA's), (Start: 6 @32516 has 16 MA's), (11, 32573), (13, 32621), (15, 32654), (16, 32669), (20, 32729), (21, 32735), (27, 32780),

Gene: Elsa_49 Start: 32580, Stop: 32888, Start Num: 6

Candidate Starts for Elsa_49:

(Start: 5 @32565 has 9 MA's), (Start: 6 @32580 has 16 MA's), (11, 32637), (13, 32685), (15, 32718), (16, 32733), (20, 32793), (21, 32799), (27, 32844),

Gene: Elver_95 Start: 54012, Stop: 54290, Start Num: 7

Candidate Starts for Elver_95:

(Start: 7 @54012 has 2 MA's), (16, 54168),

Gene: GoCrazy_48 Start: 32456, Stop: 32758, Start Num: 6

Candidate Starts for GoCrazy_48:

(Start: 5 @32441 has 9 MA's), (Start: 6 @32456 has 16 MA's), (8, 32477), (11, 32513), (12, 32516), (16, 32609), (17, 32648), (22, 32678),

Gene: Hankly_48 Start: 31730, Stop: 32032, Start Num: 6

Candidate Starts for Hankly_48:

(Start: 5 @31715 has 9 MA's), (Start: 6 @31730 has 16 MA's), (8, 31751), (11, 31787), (12, 31790), (16, 31883), (17, 31922), (22, 31952),

Gene: Heisenberger_48 Start: 32020, Stop: 32313, Start Num: 6

Candidate Starts for Heisenberger_48:

(Start: 5 @32005 has 9 MA's), (Start: 6 @32020 has 16 MA's), (8, 32041), (11, 32077), (12, 32080), (16, 32173), (17, 32212), (22, 32242),

Gene: JEGGS_48 Start: 32075, Stop: 32368, Start Num: 6

Candidate Starts for JEGGS_48:

(Start: 5 @32060 has 9 MA's), (Start: 6 @32075 has 16 MA's), (8, 32096), (11, 32132), (12, 32135), (16, 32228), (17, 32267), (22, 32297),

Gene: Kardesai_50 Start: 32700, Stop: 33002, Start Num: 6

Candidate Starts for Kardesai_50:

(Start: 5 @32685 has 9 MA's), (Start: 6 @32700 has 16 MA's), (11, 32757), (13, 32805), (15, 32838), (16, 32853), (17, 32892), (22, 32922),

Gene: KeaneyLin_48 Start: 32456, Stop: 32758, Start Num: 6

Candidate Starts for KeaneyLin_48:

(Start: 5 @32441 has 9 MA's), (Start: 6 @32456 has 16 MA's), (8, 32477), (11, 32513), (12, 32516), (16, 32609), (17, 32648), (22, 32678),

Gene: Linda_45 Start: 31834, Stop: 32124, Start Num: 5

Candidate Starts for Linda_45:

(2, 31744), (3, 31750), (4, 31807), (Start: 5 @31834 has 9 MA's), (10, 31888), (14, 31960), (18, 32053), (24, 32086),

Gene: Mooshroom_51 Start: 32700, Stop: 33002, Start Num: 6

Candidate Starts for Mooshroom_51:

(Start: 5 @32685 has 9 MA's), (Start: 6 @32700 has 16 MA's), (11, 32757), (13, 32805), (16, 32853), (17, 32892), (22, 32922),

Gene: MrAaronian_45 Start: 31836, Stop: 32126, Start Num: 5

Candidate Starts for MrAaronian_45:

(2, 31746), (3, 31752), (4, 31809), (Start: 5 @31836 has 9 MA's), (10, 31890), (14, 31962), (18, 32055), (24, 32088),

Gene: Mudcat_46 Start: 33433, Stop: 33726, Start Num: 6

Candidate Starts for Mudcat_46:

(Start: 5 @33418 has 9 MA's), (Start: 6 @33433 has 16 MA's), (8, 33454), (11, 33490), (12, 33493), (16, 33586), (17, 33625), (22, 33655),

Gene: NapoleonB_49 Start: 32516, Stop: 32824, Start Num: 6

Candidate Starts for NapoleonB_49:

(Start: 5 @32501 has 9 MA's), (Start: 6 @32516 has 16 MA's), (11, 32573), (13, 32621), (15, 32654), (16, 32669), (20, 32729), (21, 32735), (27, 32780),

Gene: Nason_49 Start: 32580, Stop: 32888, Start Num: 6

Candidate Starts for Nason_49:

(Start: 5 @32565 has 9 MA's), (Start: 6 @32580 has 16 MA's), (11, 32637), (13, 32685), (15, 32718), (16, 32733), (20, 32793), (21, 32799), (27, 32844),

Gene: Paella_97 Start: 54602, Stop: 54880, Start Num: 7

Candidate Starts for Paella_97:

(Start: 7 @54602 has 2 MA's), (16, 54758),

Gene: ProfFrink_45 Start: 31837, Stop: 32127, Start Num: 5

Candidate Starts for ProfFrink_45:

(3, 31753), (4, 31810), (Start: 5 @31837 has 9 MA's), (10, 31891), (14, 31963), (18, 32056), (24, 32089),

Gene: Qui_97 Start: 54602, Stop: 54880, Start Num: 7

Candidate Starts for Qui_97:

(Start: 7 @54602 has 2 MA's), (16, 54758),

Gene: Raunak_48 Start: 31534, Stop: 31824, Start Num: 5

Candidate Starts for Raunak_48:

(2, 31444), (3, 31450), (4, 31507), (Start: 5 @31534 has 9 MA's), (10, 31588), (14, 31660), (18, 31753), (24, 31786),

Gene: Sporto_46 Start: 33334, Stop: 33609, Start Num: 5

Candidate Starts for Sporto_46:

(Start: 5 @33334 has 9 MA's), (10, 33379), (19, 33547),

Gene: Tribby_49 Start: 32243, Stop: 32566, Start Num: 5

Candidate Starts for Tribby_49:

(Start: 5 @32243 has 9 MA's), (Start: 6 @32258 has 16 MA's), (8, 32279), (11, 32315), (16, 32411), (17, 32450), (22, 32480), (23, 32489), (25, 32501), (26, 32513),

Gene: Xenomorph_45 Start: 31991, Stop: 32299, Start Num: 6

Candidate Starts for Xenomorph_45:

(1, 31826), (Start: 5 @31976 has 9 MA's), (Start: 6 @31991 has 16 MA's), (8, 32012), (11, 32048), (16, 32144), (17, 32183), (22, 32213), (23, 32222), (25, 32234), (26, 32246),