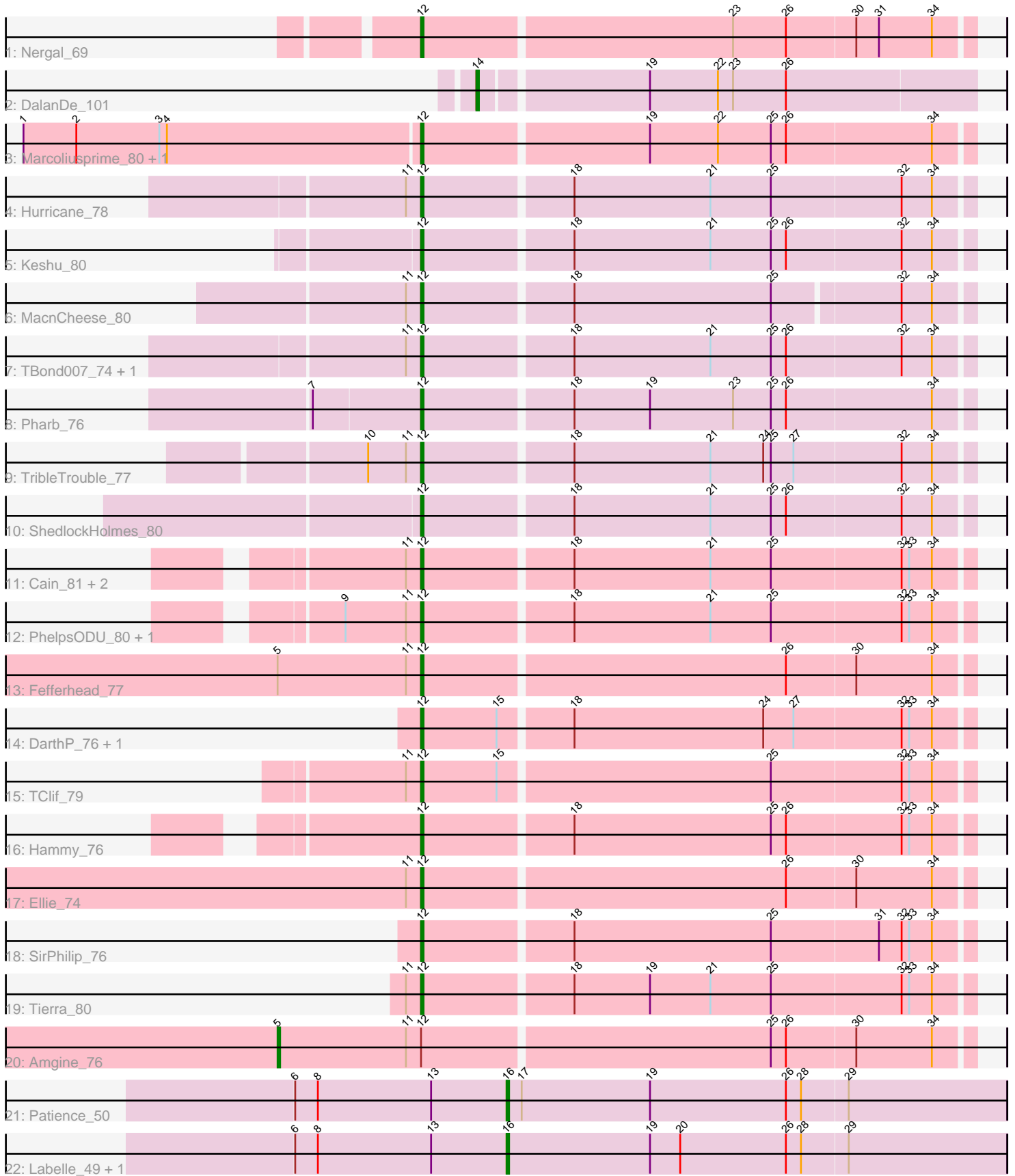


Pham 196735



Note: Tracks are now grouped by subcluster and scaled. Switching in subcluster is indicated by changes in track color. Track scale is now set by default to display the region 30 bp upstream of start 1 to 30 bp downstream of the last possible start. If this default region is judged to be packed too tightly with annotated starts, the track will be further scaled to only show that region of the ORF with annotated starts. This action will be indicated by adding "Zoomed" to the title. For starts, yellow indicates the location of called starts comprised solely of Glimmer/GeneMark auto-annotations, green indicates the location of called starts with at least 1 manual gene annotation.

Pham 196735 Report

This analysis was run 12/09/24 on database version 580.

Pham number 196735 has 29 members, 0 are drafts.

Phages represented in each track:

- Track 1 : Nergal_69
- Track 2 : DalanDe_101
- Track 3 : Marcoliusprime_80, DismalStressor_81
- Track 4 : Hurricane_78
- Track 5 : Keshu_80
- Track 6 : MacnCheese_80
- Track 7 : TBond007_74, Pixie_77
- Track 8 : Pharb_76
- Track 9 : TribbleTrouble_77
- Track 10 : ShedlockHolmes_80
- Track 11 : Cain_81, Bryler_81, Phrank_81
- Track 12 : PhelpsODU_80, Unicorn_80
- Track 13 : Fefferhead_77
- Track 14 : DarthP_76, Amohnition_76
- Track 15 : TClif_79
- Track 16 : Hammy_76
- Track 17 : Ellie_74
- Track 18 : SirPhilip_76
- Track 19 : Tierra_80
- Track 20 : Amgine_76
- Track 21 : Patience_50
- Track 22 : Labelle_49, Madruga_48

Summary of Final Annotations (See graph section above for start numbers):

The start number called the most often in the published annotations is 12, it was called in 24 of the 29 non-draft genes in the pham.

Genes that call this "Most Annotated" start:

- Amohnition_76, Bryler_81, Cain_81, DarthP_76, DismalStressor_81, Ellie_74, Fefferhead_77, Hammy_76, Hurricane_78, Keshu_80, MacnCheese_80, Marcoliusprime_80, Nergal_69, Pharb_76, PhelpsODU_80, Phrank_81, Pixie_77, ShedlockHolmes_80, SirPhilip_76, TBond007_74, TClif_79, Tierra_80, TribbleTrouble_77, Unicorn_80,

Genes that have the "Most Annotated" start but do not call it:

- Amgine_76,

Genes that do not have the "Most Annotated" start:

- DalanDe_101, Labelle_49, Madrugua_48, Patience_50,

Summary by start number:

Start 5:

- Found in 2 of 29 (6.9%) of genes in pham
- Manual Annotations of this start: 1 of 29
- Called 50.0% of time when present
- Phage (with cluster) where this start called: Amgine_76 (K6),

Start 12:

- Found in 25 of 29 (86.2%) of genes in pham
- Manual Annotations of this start: 24 of 29
- Called 96.0% of time when present
- Phage (with cluster) where this start called: Amohnition_76 (K6), Bryler_81 (K6), Cain_81 (K6), DarthP_76 (K6), DismalStressor_81 (K2), Ellie_74 (K6), Fefferhead_77 (K6), Hammy_76 (K6), Hurricane_78 (K3), Keshu_80 (K3), MacnCheese_80 (K3), Marcoliusprime_80 (K2), Nergal_69 (AG), Pharb_76 (K3), PhelpsODU_80 (K6), Phrank_81 (K6), Pixie_77 (K3), ShedlockHolmes_80 (K3), SirPhilip_76 (K6), TBond007_74 (K3), TClif_79 (K6), Tierra_80 (K6), TribbleTrouble_77 (K3), Unicorn_80 (K6),

Start 14:

- Found in 1 of 29 (3.4%) of genes in pham
- Manual Annotations of this start: 1 of 29
- Called 100.0% of time when present
- Phage (with cluster) where this start called: DalanDe_101 (DQ),

Start 16:

- Found in 3 of 29 (10.3%) of genes in pham
- Manual Annotations of this start: 3 of 29
- Called 100.0% of time when present
- Phage (with cluster) where this start called: Labelle_49 (U), Madrugua_48 (U), Patience_50 (U),

Summary by clusters:

There are 6 clusters represented in this pham: AG, K3, K2, U, K6, DQ,

Info for manual annotations of cluster AG:

- Start number 12 was manually annotated 1 time for cluster AG.

Info for manual annotations of cluster DQ:

- Start number 14 was manually annotated 1 time for cluster DQ.

Info for manual annotations of cluster K2:

- Start number 12 was manually annotated 2 times for cluster K2.

Info for manual annotations of cluster K3:

- Start number 12 was manually annotated 8 times for cluster K3.

Info for manual annotations of cluster K6:

- Start number 5 was manually annotated 1 time for cluster K6.
- Start number 12 was manually annotated 13 times for cluster K6.

Info for manual annotations of cluster U:

- Start number 16 was manually annotated 3 times for cluster U.

Gene Information:

Gene: Amgine_76 Start: 51678, Stop: 51947, Start Num: 5

Candidate Starts for Amgine_76:

(Start: 5 @51678 has 1 MA's), (11, 51729), (Start: 12 @51735 has 24 MA's), (25, 51870), (26, 51876), (30, 51903), (34, 51933),

Gene: Amohnition_76 Start: 51628, Stop: 51840, Start Num: 12

Candidate Starts for Amohnition_76:

(Start: 12 @51628 has 24 MA's), (15, 51658), (18, 51685), (24, 51760), (27, 51772), (32, 51814), (33, 51817), (34, 51826),

Gene: Bryler_81 Start: 50668, Stop: 50880, Start Num: 12

Candidate Starts for Bryler_81:

(11, 50662), (Start: 12 @50668 has 24 MA's), (18, 50725), (21, 50779), (25, 50803), (32, 50854), (33, 50857), (34, 50866),

Gene: Cain_81 Start: 50656, Stop: 50868, Start Num: 12

Candidate Starts for Cain_81:

(11, 50650), (Start: 12 @50656 has 24 MA's), (18, 50713), (21, 50767), (25, 50791), (32, 50842), (33, 50845), (34, 50854),

Gene: DalanDe_101 Start: 79925, Stop: 79734, Start Num: 14

Candidate Starts for DalanDe_101:

(Start: 14 @79925 has 1 MA's), (19, 79862), (22, 79835), (23, 79829), (26, 79808),

Gene: DARTH_P_76 Start: 51481, Stop: 51693, Start Num: 12

Candidate Starts for DARTH_P_76:

(Start: 12 @51481 has 24 MA's), (15, 51511), (18, 51538), (24, 51613), (27, 51625), (32, 51667), (33, 51670), (34, 51679),

Gene: DismalStressor_81 Start: 53059, Stop: 53271, Start Num: 12

Candidate Starts for DismalStressor_81:

(1, 52903), (2, 52924), (3, 52957), (4, 52960), (Start: 12 @53059 has 24 MA's), (19, 53146), (22, 53173), (25, 53194), (26, 53200), (34, 53257),

Gene: Ellie_74 Start: 50904, Stop: 51116, Start Num: 12

Candidate Starts for Ellie_74:

(11, 50898), (Start: 12 @50904 has 24 MA's), (26, 51045), (30, 51072), (34, 51102),

Gene: Fefferhead_77 Start: 50965, Stop: 51177, Start Num: 12

Candidate Starts for Fefferhead_77:

(Start: 5 @50908 has 1 MA's), (11, 50959), (Start: 12 @50965 has 24 MA's), (26, 51106), (30, 51133), (34, 51163),

Gene: Hammy_76 Start: 51468, Stop: 51680, Start Num: 12

Candidate Starts for Hammy_76:

(Start: 12 @51468 has 24 MA's), (18, 51525), (25, 51603), (26, 51609), (32, 51654), (33, 51657), (34, 51666),

Gene: Hurricane_78 Start: 51017, Stop: 51229, Start Num: 12

Candidate Starts for Hurricane_78:

(11, 51011), (Start: 12 @51017 has 24 MA's), (18, 51074), (21, 51128), (25, 51152), (32, 51203), (34, 51215),

Gene: Keshu_80 Start: 51207, Stop: 51419, Start Num: 12

Candidate Starts for Keshu_80:

(Start: 12 @51207 has 24 MA's), (18, 51264), (21, 51318), (25, 51342), (26, 51348), (32, 51393), (34, 51405),

Gene: Labelle_49 Start: 39688, Stop: 39885, Start Num: 16

Candidate Starts for Labelle_49:

(6, 39604), (8, 39613), (13, 39658), (Start: 16 @39688 has 3 MA's), (19, 39745), (20, 39757), (26, 39799), (28, 39805), (29, 39823),

Gene: MacnCheese_80 Start: 51630, Stop: 51839, Start Num: 12

Candidate Starts for MacnCheese_80:

(11, 51624), (Start: 12 @51630 has 24 MA's), (18, 51687), (25, 51765), (32, 51813), (34, 51825),

Gene: Madruga_48 Start: 39341, Stop: 39538, Start Num: 16

Candidate Starts for Madruga_48:

(6, 39257), (8, 39266), (13, 39311), (Start: 16 @39341 has 3 MA's), (19, 39398), (20, 39410), (26, 39452), (28, 39458), (29, 39476),

Gene: Marcoliusprime_80 Start: 53059, Stop: 53271, Start Num: 12

Candidate Starts for Marcoliusprime_80:

(1, 52903), (2, 52924), (3, 52957), (4, 52960), (Start: 12 @53059 has 24 MA's), (19, 53146), (22, 53173), (25, 53194), (26, 53200), (34, 53257),

Gene: Nergal_69 Start: 47627, Stop: 47839, Start Num: 12

Candidate Starts for Nergal_69:

(Start: 12 @47627 has 24 MA's), (23, 47747), (26, 47768), (30, 47795), (31, 47804), (34, 47825),

Gene: Patience_50 Start: 40236, Stop: 40433, Start Num: 16

Candidate Starts for Patience_50:

(6, 40152), (8, 40161), (13, 40206), (Start: 16 @40236 has 3 MA's), (17, 40242), (19, 40293), (26, 40347), (28, 40353), (29, 40371),

Gene: Pharb_76 Start: 50297, Stop: 50509, Start Num: 12

Candidate Starts for Pharb_76:

(7, 50255), (Start: 12 @50297 has 24 MA's), (18, 50354), (19, 50384), (23, 50417), (25, 50432), (26, 50438), (34, 50495),

Gene: PhelpsODU_80 Start: 50783, Stop: 50995, Start Num: 12

Candidate Starts for PhelpsODU_80:

(9, 50753), (11, 50777), (Start: 12 @50783 has 24 MA's), (18, 50840), (21, 50894), (25, 50918), (32, 50969), (33, 50972), (34, 50981),

Gene: Phrank_81 Start: 50643, Stop: 50855, Start Num: 12

Candidate Starts for Phrank_81:

(11, 50637), (Start: 12 @50643 has 24 MA's), (18, 50700), (21, 50754), (25, 50778), (32, 50829), (33, 50832), (34, 50841),

Gene: Pixie_77 Start: 50595, Stop: 50807, Start Num: 12

Candidate Starts for Pixie_77:

(11, 50589), (Start: 12 @50595 has 24 MA's), (18, 50652), (21, 50706), (25, 50730), (26, 50736), (32, 50781), (34, 50793),

Gene: ShedlockHolmes_80 Start: 51112, Stop: 51324, Start Num: 12

Candidate Starts for ShedlockHolmes_80:

(Start: 12 @51112 has 24 MA's), (18, 51169), (21, 51223), (25, 51247), (26, 51253), (32, 51298), (34, 51310),

Gene: SirPhilip_76 Start: 51179, Stop: 51391, Start Num: 12

Candidate Starts for SirPhilip_76:

(Start: 12 @51179 has 24 MA's), (18, 51236), (25, 51314), (31, 51356), (32, 51365), (33, 51368), (34, 51377),

Gene: TBond007_74 Start: 50594, Stop: 50806, Start Num: 12

Candidate Starts for TBond007_74:

(11, 50588), (Start: 12 @50594 has 24 MA's), (18, 50651), (21, 50705), (25, 50729), (26, 50735), (32, 50780), (34, 50792),

Gene: TClif_79 Start: 50907, Stop: 51119, Start Num: 12

Candidate Starts for TClif_79:

(11, 50901), (Start: 12 @50907 has 24 MA's), (15, 50937), (25, 51042), (32, 51093), (33, 51096), (34, 51105),

Gene: Tierra_80 Start: 51070, Stop: 51282, Start Num: 12

Candidate Starts for Tierra_80:

(11, 51064), (Start: 12 @51070 has 24 MA's), (18, 51127), (19, 51157), (21, 51181), (25, 51205), (32, 51256), (33, 51259), (34, 51268),

Gene: TribelTrouble_77 Start: 50865, Stop: 51077, Start Num: 12

Candidate Starts for TribelTrouble_77:

(10, 50844), (11, 50859), (Start: 12 @50865 has 24 MA's), (18, 50922), (21, 50976), (24, 50997), (25, 51000), (27, 51009), (32, 51051), (34, 51063),

Gene: Unicorn_80 Start: 50783, Stop: 50995, Start Num: 12

Candidate Starts for Unicorn_80:

(9, 50753), (11, 50777), (Start: 12 @50783 has 24 MA's), (18, 50840), (21, 50894), (25, 50918), (32, 50969), (33, 50972), (34, 50981),