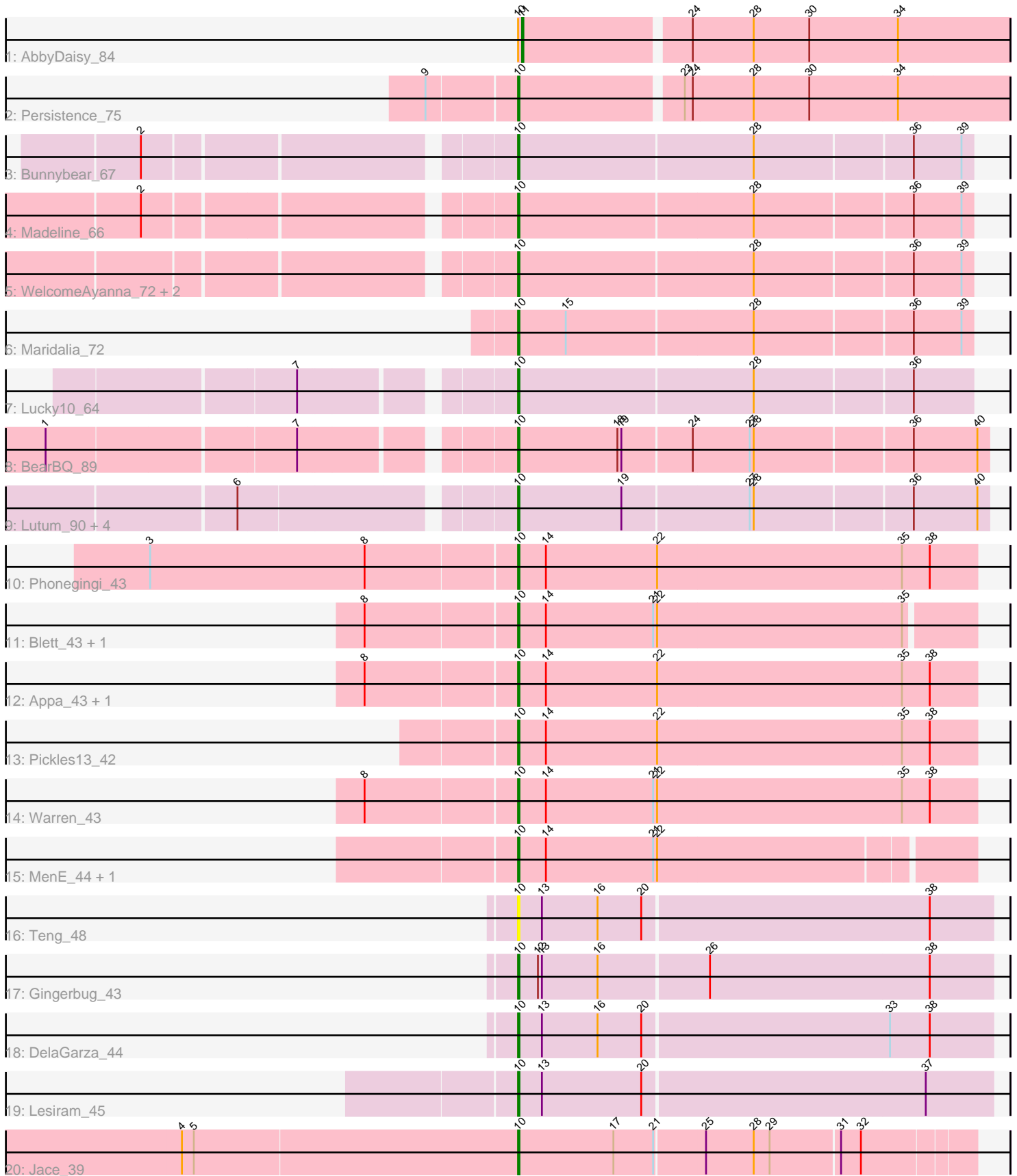


Pham 196736



Note: Tracks are now grouped by subcluster and scaled. Switching in subcluster is indicated by changes in track color. Track scale is now set by default to display the region 30 bp upstream of start 1 to 30 bp downstream of the last possible start. If this default region is judged to be packed too tightly with annotated starts, the track will be further scaled to only show that region of the ORF with annotated starts. This action will be indicated by adding "Zoomed" to the title. For starts, yellow indicates the location of called starts comprised solely of Glimmer/GeneMark auto-annotations, green indicates the location of called starts with at least 1 manual gene annotation.

Pham 196736 Report

This analysis was run 12/09/24 on database version 580.

Pham number 196736 has 29 members, 1 are drafts.

Phages represented in each track:

- Track 1 : AbbyDaisy_84
- Track 2 : Persistence_75
- Track 3 : Bunnybear_67
- Track 4 : Madeline_66
- Track 5 : WelcomeAyanna_72, RavenCo17_68, ThankyouJordi_72
- Track 6 : Maridalia_72
- Track 7 : Lucky10_64
- Track 8 : BearBQ_89
- Track 9 : Lutum_90, Phabuloso_96, Kenna_84, BENtherdunthat_89, Getalong_92
- Track 10 : Phonegingi_43
- Track 11 : Blett_43, Bush_44
- Track 12 : Appa_43, Dropshot_43
- Track 13 : Pickles13_42
- Track 14 : Warren_43
- Track 15 : MenE_44, Antuna_44
- Track 16 : Teng_48
- Track 17 : Gingerbug_43
- Track 18 : DelaGarza_44
- Track 19 : Lesiram_45
- Track 20 : Jace_39

Summary of Final Annotations (See graph section above for start numbers):

The start number called the most often in the published annotations is 10, it was called in 27 of the 28 non-draft genes in the pham.

Genes that call this "Most Annotated" start:

- Antuna_44, Appa_43, BENtherdunthat_89, BearBQ_89, Blett_43, Bunnybear_67, Bush_44, DelaGarza_44, Dropshot_43, Getalong_92, Gingerbug_43, Jace_39, Kenna_84, Lesiram_45, Lucky10_64, Lutum_90, Madeline_66, Maridalia_72, MenE_44, Persistence_75, Phabuloso_96, Phonegingi_43, Pickles13_42, RavenCo17_68, Teng_48, ThankyouJordi_72, Warren_43, WelcomeAyanna_72,

Genes that have the "Most Annotated" start but do not call it:

- AbbyDaisy_84,

Genes that do not have the "Most Annotated" start:

-

Summary by start number:

Start 10:

- Found in 29 of 29 (100.0%) of genes in pham
- Manual Annotations of this start: 27 of 28
- Called 96.6% of time when present
- Phage (with cluster) where this start called: Antuna_44 (GA), Appa_43 (GA), BENTherdunthat_89 (DN1), BearBQ_89 (DN), Blett_43 (GA), Bunnybear_67 (CZ), Bush_44 (GA), DelaGarza_44 (GF), Dropshot_43 (GA), Getalong_92 (DN1), Gingerbug_43 (GF), Jace_39 (singleton), Kenna_84 (DN1), Lesiram_45 (GF), Lucky10_64 (DH), Lutum_90 (DN1), Madeline_66 (CZ1), Maridalia_72 (CZ1), MenE_44 (GA), Persistence_75 (AY), Phabuloso_96 (DN1), Phonegingi_43 (GA), Pickles13_42 (GA), RavenCo17_68 (CZ8), Teng_48 (GF), ThankyouJordi_72 (CZ1), Warren_43 (GA), WelcomeAyanna_72 (CZ1),

Start 11:

- Found in 1 of 29 (3.4%) of genes in pham
- Manual Annotations of this start: 1 of 28
- Called 100.0% of time when present
- Phage (with cluster) where this start called: AbbyDaisy_84 (AY),

Summary by clusters:

There are 10 clusters represented in this pham: DN, singleton, DH, CZ, CZ1, CZ8, GF, DN1, GA, AY,

Info for manual annotations of cluster AY:

- Start number 10 was manually annotated 1 time for cluster AY.
- Start number 11 was manually annotated 1 time for cluster AY.

Info for manual annotations of cluster CZ:

- Start number 10 was manually annotated 1 time for cluster CZ.

Info for manual annotations of cluster CZ1:

- Start number 10 was manually annotated 4 times for cluster CZ1.

Info for manual annotations of cluster CZ8:

- Start number 10 was manually annotated 1 time for cluster CZ8.

Info for manual annotations of cluster DH:

- Start number 10 was manually annotated 1 time for cluster DH.

Info for manual annotations of cluster DN:

- Start number 10 was manually annotated 1 time for cluster DN.

Info for manual annotations of cluster DN1:

- Start number 10 was manually annotated 5 times for cluster DN1.

Info for manual annotations of cluster GA:

•Start number 10 was manually annotated 9 times for cluster GA.

Info for manual annotations of cluster GF:

•Start number 10 was manually annotated 3 times for cluster GF.

Gene Information:

Gene: AbbyDaisy_84 Start: 48452, Stop: 48808, Start Num: 11

Candidate Starts for AbbyDaisy_84:

(Start: 10 @48449 has 27 MA's), (Start: 11 @48452 has 1 MA's), (24, 48572), (28, 48617), (30, 48659), (34, 48725),

Gene: Antuna_44 Start: 26934, Stop: 27266, Start Num: 10

Candidate Starts for Antuna_44:

(Start: 10 @26934 has 27 MA's), (14, 26955), (21, 27036), (22, 27039),

Gene: Appa_43 Start: 26832, Stop: 27176, Start Num: 10

Candidate Starts for Appa_43:

(8, 26721), (Start: 10 @26832 has 27 MA's), (14, 26853), (22, 26937), (35, 27120), (38, 27141),

Gene: BENtherdunthat_89 Start: 48908, Stop: 49252, Start Num: 10

Candidate Starts for BENtherdunthat_89:

(6, 48719), (Start: 10 @48908 has 27 MA's), (19, 48986), (27, 49079), (28, 49082), (36, 49196), (40, 49244),

Gene: BearBQ_89 Start: 50470, Stop: 50814, Start Num: 10

Candidate Starts for BearBQ_89:

(1, 50149), (7, 50329), (Start: 10 @50470 has 27 MA's), (18, 50545), (19, 50548), (24, 50599), (27, 50641), (28, 50644), (36, 50758), (40, 50806),

Gene: Blett_43 Start: 27033, Stop: 27371, Start Num: 10

Candidate Starts for Blett_43:

(8, 26922), (Start: 10 @27033 has 27 MA's), (14, 27054), (21, 27135), (22, 27138), (35, 27321),

Gene: Bunnybear_67 Start: 47210, Stop: 47542, Start Num: 10

Candidate Starts for Bunnybear_67:

(2, 46955), (Start: 10 @47210 has 27 MA's), (28, 47384), (36, 47498), (39, 47534),

Gene: Bush_44 Start: 26981, Stop: 27319, Start Num: 10

Candidate Starts for Bush_44:

(8, 26870), (Start: 10 @26981 has 27 MA's), (14, 27002), (21, 27083), (22, 27086), (35, 27269),

Gene: DelaGarza_44 Start: 26877, Stop: 26524, Start Num: 10

Candidate Starts for DelaGarza_44:

(Start: 10 @26877 has 27 MA's), (13, 26859), (16, 26817), (20, 26784), (33, 26601), (38, 26571),

Gene: Dropshot_43 Start: 26667, Stop: 27011, Start Num: 10

Candidate Starts for Dropshot_43:

(8, 26556), (Start: 10 @26667 has 27 MA's), (14, 26688), (22, 26772), (35, 26955), (38, 26976),

Gene: Getalong_92 Start: 51363, Stop: 51707, Start Num: 10
Candidate Starts for Getalong_92:
(6, 51174), (Start: 10 @51363 has 27 MA's), (19, 51441), (27, 51534), (28, 51537), (36, 51651), (40, 51699),

Gene: Gingerbug_43 Start: 27395, Stop: 27042, Start Num: 10
Candidate Starts for Gingerbug_43:
(Start: 10 @27395 has 27 MA's), (12, 27380), (13, 27377), (16, 27335), (26, 27254), (38, 27089),

Gene: Jace_39 Start: 29450, Stop: 29782, Start Num: 10
Candidate Starts for Jace_39:
(4, 29198), (5, 29207), (Start: 10 @29450 has 27 MA's), (17, 29522), (21, 29552), (25, 29588), (28, 29624), (29, 29636), (31, 29687), (32, 29702),

Gene: Kenna_84 Start: 48181, Stop: 48525, Start Num: 10
Candidate Starts for Kenna_84:
(6, 47992), (Start: 10 @48181 has 27 MA's), (19, 48259), (27, 48352), (28, 48355), (36, 48469), (40, 48517),

Gene: Lesiram_45 Start: 26848, Stop: 26495, Start Num: 10
Candidate Starts for Lesiram_45:
(Start: 10 @26848 has 27 MA's), (13, 26830), (20, 26755), (37, 26545),

Gene: Lucky10_64 Start: 40485, Stop: 40817, Start Num: 10
Candidate Starts for Lucky10_64:
(7, 40344), (Start: 10 @40485 has 27 MA's), (28, 40659), (36, 40773),

Gene: Lutum_90 Start: 49343, Stop: 49687, Start Num: 10
Candidate Starts for Lutum_90:
(6, 49154), (Start: 10 @49343 has 27 MA's), (19, 49421), (27, 49514), (28, 49517), (36, 49631), (40, 49679),

Gene: Madeline_66 Start: 47902, Stop: 48234, Start Num: 10
Candidate Starts for Madeline_66:
(2, 47647), (Start: 10 @47902 has 27 MA's), (28, 48076), (36, 48190), (39, 48226),

Gene: Maridalia_72 Start: 47222, Stop: 47554, Start Num: 10
Candidate Starts for Maridalia_72:
(Start: 10 @47222 has 27 MA's), (15, 47258), (28, 47396), (36, 47510), (39, 47546),

Gene: MenE_44 Start: 26956, Stop: 27288, Start Num: 10
Candidate Starts for MenE_44:
(Start: 10 @26956 has 27 MA's), (14, 26977), (21, 27058), (22, 27061),

Gene: Persistence_75 Start: 44425, Stop: 44784, Start Num: 10
Candidate Starts for Persistence_75:
(9, 44362), (Start: 10 @44425 has 27 MA's), (23, 44542), (24, 44548), (28, 44593), (30, 44635), (34, 44701),

Gene: Phabuloso_96 Start: 50835, Stop: 51179, Start Num: 10
Candidate Starts for Phabuloso_96:
(6, 50646), (Start: 10 @50835 has 27 MA's), (19, 50913), (27, 51006), (28, 51009), (36, 51123), (40, 51171),

Gene: Phonegingi_43 Start: 26878, Stop: 27222, Start Num: 10
Candidate Starts for Phonegingi_43:
(3, 26605), (8, 26767), (Start: 10 @26878 has 27 MA's), (14, 26899), (22, 26983), (35, 27166), (38, 27187),

Gene: Pickles13_42 Start: 27142, Stop: 27486, Start Num: 10
Candidate Starts for Pickles13_42:
(Start: 10 @27142 has 27 MA's), (14, 27163), (22, 27247), (35, 27430), (38, 27451),

Gene: RavenCo17_68 Start: 47032, Stop: 47364, Start Num: 10
Candidate Starts for RavenCo17_68:
(Start: 10 @47032 has 27 MA's), (28, 47206), (36, 47320), (39, 47356),

Gene: Teng_48 Start: 26868, Stop: 26515, Start Num: 10
Candidate Starts for Teng_48:
(Start: 10 @26868 has 27 MA's), (13, 26850), (16, 26808), (20, 26775), (38, 26562),

Gene: ThankyouJordi_72 Start: 49350, Stop: 49682, Start Num: 10
Candidate Starts for ThankyouJordi_72:
(Start: 10 @49350 has 27 MA's), (28, 49524), (36, 49638), (39, 49674),

Gene: Warren_43 Start: 26888, Stop: 27232, Start Num: 10
Candidate Starts for Warren_43:
(8, 26777), (Start: 10 @26888 has 27 MA's), (14, 26909), (21, 26990), (22, 26993), (35, 27176), (38, 27197),

Gene: WelcomeAyanna_72 Start: 49497, Stop: 49829, Start Num: 10
Candidate Starts for WelcomeAyanna_72:
(Start: 10 @49497 has 27 MA's), (28, 49671), (36, 49785), (39, 49821),