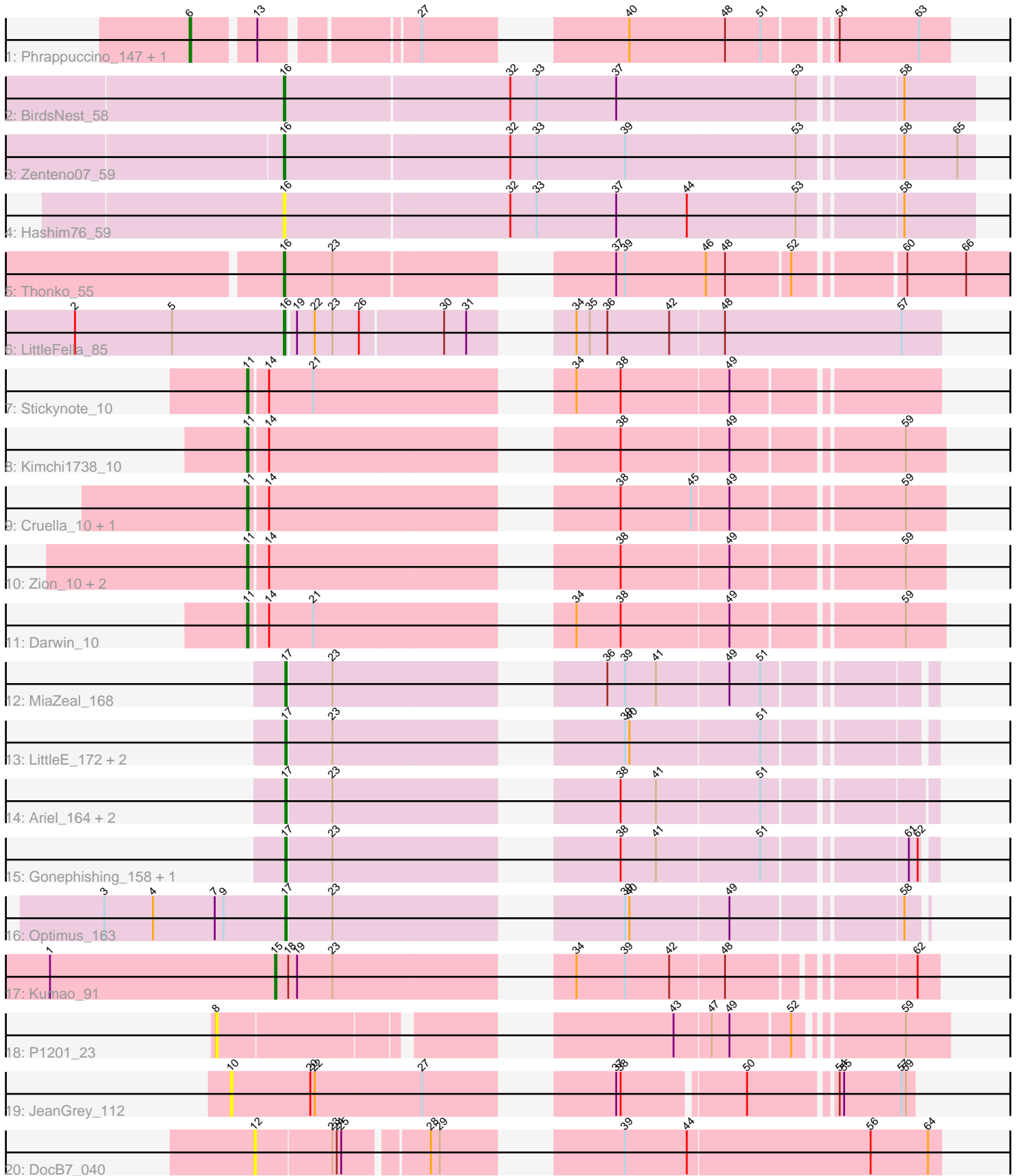


Pham 196738



Note: Tracks are now grouped by subcluster and scaled. Switching in subcluster is indicated by changes in track color. Track scale is now set by default to display the region 30 bp upstream of start 1 to 30 bp downstream of the last possible start. If this default region is judged to be packed too tightly with annotated starts, the track will be further scaled to only show that region of the ORF with annotated starts. This action will be indicated by adding "Zoomed" to the title. For starts, yellow indicates the location of called starts comprised solely of Glimmer/GeneMark auto-annotations, green indicates the location of called starts with at least 1 manual gene annotation.

## Pham 196738 Report

This analysis was run 12/09/24 on database version 580.

Pham number 196738 has 29 members, 5 are drafts.

Phages represented in each track:

- Track 1 : Phrappuccino\_147, Settecandela\_147
- Track 2 : BirdsNest\_58
- Track 3 : Zenteno07\_59
- Track 4 : Hashim76\_59
- Track 5 : Thonko\_55
- Track 6 : LittleFella\_85
- Track 7 : Stickynote\_10
- Track 8 : Kimchi1738\_10
- Track 9 : Cruella\_10, C3PO\_10
- Track 10 : Zion\_10, PotatoChip\_10, PeteyPab\_10
- Track 11 : Darwin\_10
- Track 12 : MiaZeal\_168
- Track 13 : LittleE\_172, Lucky2013\_161, Porcelain\_165
- Track 14 : Ariel\_164, Superphikiman\_162, Courthouse\_161
- Track 15 : Gonephishing\_158, Squint\_159
- Track 16 : Optimus\_163
- Track 17 : Kumao\_91
- Track 18 : P1201\_23
- Track 19 : JeanGrey\_112
- Track 20 : DocB7\_040

### ***Summary of Final Annotations (See graph section above for start numbers):***

The start number called the most often in the published annotations is 17, it was called in 9 of the 24 non-draft genes in the pham.

Genes that call this "Most Annotated" start:

- Ariel\_164, Courthouse\_161, Gonephishing\_158, LittleE\_172, Lucky2013\_161, MiaZeal\_168, Optimus\_163, Porcelain\_165, Squint\_159, Superphikiman\_162,

Genes that have the "Most Annotated" start but do not call it:

- 

Genes that do not have the "Most Annotated" start:

- BirdsNest\_58, C3PO\_10, Cruella\_10, Darwin\_10, DocB7\_040, Hashim76\_59, JeanGrey\_112, Kimchi1738\_10, Kumao\_91, LittleFella\_85, P1201\_23, PeteyPab\_10, Phrappuccino\_147, PotatoChip\_10, Settecandela\_147, Stickynote\_10, Thonko\_55, Zenteno07\_59, Zion\_10,

### Summary by start number:

#### Start 6:

- Found in 2 of 29 ( 6.9% ) of genes in pham
- Manual Annotations of this start: 2 of 24
- Called 100.0% of time when present
- Phage (with cluster) where this start called: Phrappuccino\_147 (AA), Settecandela\_147 (AA),

#### Start 8:

- Found in 1 of 29 ( 3.4% ) of genes in pham
- No Manual Annotations of this start.
- Called 100.0% of time when present
- Phage (with cluster) where this start called: P1201\_23 (singleton),

#### Start 10:

- Found in 1 of 29 ( 3.4% ) of genes in pham
- No Manual Annotations of this start.
- Called 100.0% of time when present
- Phage (with cluster) where this start called: JeanGrey\_112 (singleton),

#### Start 11:

- Found in 8 of 29 ( 27.6% ) of genes in pham
- Manual Annotations of this start: 8 of 24
- Called 100.0% of time when present
- Phage (with cluster) where this start called: C3PO\_10 (EN), Cruella\_10 (EN), Darwin\_10 (EN), Kimchi1738\_10 (EN), PeteyPab\_10 (EN), PotatoChip\_10 (EN), Stickynote\_10 (EN), Zion\_10 (EN),

#### Start 12:

- Found in 1 of 29 ( 3.4% ) of genes in pham
- No Manual Annotations of this start.
- Called 100.0% of time when present
- Phage (with cluster) where this start called: DocB7\_040 (singleton),

#### Start 15:

- Found in 1 of 29 ( 3.4% ) of genes in pham
- Manual Annotations of this start: 1 of 24
- Called 100.0% of time when present
- Phage (with cluster) where this start called: Kumao\_91 (singleton),

#### Start 16:

- Found in 5 of 29 ( 17.2% ) of genes in pham
- Manual Annotations of this start: 4 of 24
- Called 100.0% of time when present
- Phage (with cluster) where this start called: BirdsNest\_58 (B13), Hashim76\_59 (B13), LittleFella\_85 (DG2), Thonko\_55 (B8), Zenteno07\_59 (B13),

Start 17:

- Found in 10 of 29 ( 34.5% ) of genes in pham
- Manual Annotations of this start: 9 of 24
- Called 100.0% of time when present
- Phage (with cluster) where this start called: Ariel\_164 (J), Courthouse\_161 (J), Gonephishing\_158 (J), LittleE\_172 (J), Lucky2013\_161 (J), MiaZeal\_168 (J), Optimus\_163 (J), Porcelain\_165 (J), Squint\_159 (J), Superphikiman\_162 (J),

### **Summary by clusters:**

There are 7 clusters represented in this pham: AA, singleton, EN, J, DG2, B13, B8,

Info for manual annotations of cluster AA:

- Start number 6 was manually annotated 2 times for cluster AA.

Info for manual annotations of cluster B13:

- Start number 16 was manually annotated 2 times for cluster B13.

Info for manual annotations of cluster B8:

- Start number 16 was manually annotated 1 time for cluster B8.

Info for manual annotations of cluster DG2:

- Start number 16 was manually annotated 1 time for cluster DG2.

Info for manual annotations of cluster EN:

- Start number 11 was manually annotated 8 times for cluster EN.

Info for manual annotations of cluster J:

- Start number 17 was manually annotated 9 times for cluster J.

### **Gene Information:**

Gene: Ariel\_164 Start: 83788, Stop: 84171, Start Num: 17

Candidate Starts for Ariel\_164:

(Start: 17 @83788 has 9 MA's), (23, 83818), (38, 83974), (41, 83998), (51, 84067),

Gene: BirdsNest\_58 Start: 48152, Stop: 47700, Start Num: 16

Candidate Starts for BirdsNest\_58:

(Start: 16 @48152 has 4 MA's), (32, 48002), (33, 47984), (37, 47930), (53, 47810), (58, 47747),

Gene: C3PO\_10 Start: 5555, Stop: 5971, Start Num: 11

Candidate Starts for C3PO\_10:

(Start: 11 @5555 has 8 MA's), (14, 5567), (38, 5765), (45, 5813), (49, 5837), (59, 5945),

Gene: Courthouse\_161 Start: 84232, Stop: 84615, Start Num: 17

Candidate Starts for Courthouse\_161:

(Start: 17 @84232 has 9 MA's), (23, 84262), (38, 84418), (41, 84442), (51, 84511),

Gene: Cruella\_10 Start: 5555, Stop: 5971, Start Num: 11

Candidate Starts for Cruella\_10:

(Start: 11 @5555 has 8 MA's), (14, 5567), (38, 5765), (45, 5813), (49, 5837), (59, 5945),

Gene: Darwin\_10 Start: 5554, Stop: 5970, Start Num: 11

Candidate Starts for Darwin\_10:

(Start: 11 @5554 has 8 MA's), (14, 5566), (21, 5596), (34, 5734), (38, 5764), (49, 5836), (59, 5944),

Gene: DocB7\_040 Start: 39094, Stop: 38681, Start Num: 12

Candidate Starts for DocB7\_040:

(12, 39094), (23, 39043), (24, 39040), (25, 39037), (28, 38986), (29, 38980), (39, 38893), (44, 38851), (56, 38728), (64, 38689),

Gene: Gonephishing\_158 Start: 85692, Stop: 86072, Start Num: 17

Candidate Starts for Gonephishing\_158:

(Start: 17 @85692 has 9 MA's), (23, 85722), (38, 85878), (41, 85902), (51, 85971), (61, 86058), (62, 86064),

Gene: Hashim76\_59 Start: 48722, Stop: 48270, Start Num: 16

Candidate Starts for Hashim76\_59:

(Start: 16 @48722 has 4 MA's), (32, 48572), (33, 48554), (37, 48500), (44, 48452), (53, 48380), (58, 48317),

Gene: JeanGrey\_112 Start: 87695, Stop: 88102, Start Num: 10

Candidate Starts for JeanGrey\_112:

(10, 87695), (20, 87749), (22, 87752), (27, 87824), (37, 87917), (38, 87920), (50, 87998), (54, 88052), (55, 88055), (57, 88094), (59, 88097),

Gene: Kimchi1738\_10 Start: 5556, Stop: 5972, Start Num: 11

Candidate Starts for Kimchi1738\_10:

(Start: 11 @5556 has 8 MA's), (14, 5568), (38, 5766), (49, 5838), (59, 5946),

Gene: Kumao\_91 Start: 57065, Stop: 57454, Start Num: 15

Candidate Starts for Kumao\_91:

(1, 56912), (Start: 15 @57065 has 1 MA's), (18, 57074), (19, 57080), (23, 57104), (34, 57230), (39, 57263), (42, 57293), (48, 57329), (62, 57440),

Gene: LittleE\_172 Start: 88564, Stop: 88944, Start Num: 17

Candidate Starts for LittleE\_172:

(Start: 17 @88564 has 9 MA's), (23, 88594), (39, 88753), (40, 88756), (51, 88843),

Gene: LittleFella\_85 Start: 60323, Stop: 60721, Start Num: 16

Candidate Starts for LittleFella\_85:

(2, 60182), (5, 60248), (Start: 16 @60323 has 4 MA's), (19, 60329), (22, 60341), (23, 60353), (26, 60371), (30, 60425), (31, 60440), (34, 60476), (35, 60485), (36, 60497), (42, 60539), (48, 60575), (57, 60695),

Gene: Lucky2013\_161 Start: 84061, Stop: 84441, Start Num: 17

Candidate Starts for Lucky2013\_161:

(Start: 17 @84061 has 9 MA's), (23, 84091), (39, 84250), (40, 84253), (51, 84340),

Gene: MiaZeal\_168 Start: 85208, Stop: 85588, Start Num: 17

Candidate Starts for MiaZeal\_168:

(Start: 17 @85208 has 9 MA's), (23, 85238), (36, 85385), (39, 85397), (41, 85418), (49, 85466), (51, 85487),

Gene: Optimus\_163 Start: 87886, Stop: 88260, Start Num: 17

Candidate Starts for Optimus\_163:

(3, 87763), (4, 87796), (7, 87838), (9, 87844), (Start: 17 @87886 has 9 MA's), (23, 87916), (39, 88075), (40, 88078), (49, 88144), (58, 88249),

Gene: P1201\_23 Start: 11182, Stop: 11604, Start Num: 8

Candidate Starts for P1201\_23:

(8, 11182), (43, 11437), (47, 11461), (49, 11473), (52, 11512), (59, 11575),

Gene: PeteyPab\_10 Start: 5532, Stop: 5948, Start Num: 11

Candidate Starts for PeteyPab\_10:

(Start: 11 @5532 has 8 MA's), (14, 5544), (38, 5742), (49, 5814), (59, 5922),

Gene: Phrappuccino\_147 Start: 102698, Stop: 103132, Start Num: 6

Candidate Starts for Phrappuccino\_147:

(Start: 6 @102698 has 2 MA's), (13, 102737), (27, 102827), (40, 102929), (48, 102992), (51, 103016), (54, 103058), (63, 103112),

Gene: Porcelain\_165 Start: 85007, Stop: 85387, Start Num: 17

Candidate Starts for Porcelain\_165:

(Start: 17 @85007 has 9 MA's), (23, 85037), (39, 85196), (40, 85199), (51, 85286),

Gene: PotatoChip\_10 Start: 5534, Stop: 5950, Start Num: 11

Candidate Starts for PotatoChip\_10:

(Start: 11 @5534 has 8 MA's), (14, 5546), (38, 5744), (49, 5816), (59, 5924),

Gene: Settecandela\_147 Start: 102698, Stop: 103132, Start Num: 6

Candidate Starts for Settecandela\_147:

(Start: 6 @102698 has 2 MA's), (13, 102737), (27, 102827), (40, 102929), (48, 102992), (51, 103016), (54, 103058), (63, 103112),

Gene: Squint\_159 Start: 84873, Stop: 85253, Start Num: 17

Candidate Starts for Squint\_159:

(Start: 17 @84873 has 9 MA's), (23, 84903), (38, 85059), (41, 85083), (51, 85152), (61, 85239), (62, 85245),

Gene: Stickynote\_10 Start: 5587, Stop: 6000, Start Num: 11

Candidate Starts for Stickynote\_10:

(Start: 11 @5587 has 8 MA's), (14, 5599), (21, 5629), (34, 5767), (38, 5797), (49, 5869),

Gene: Superphikiman\_162 Start: 83928, Stop: 84311, Start Num: 17

Candidate Starts for Superphikiman\_162:

(Start: 17 @83928 has 9 MA's), (23, 83958), (38, 84114), (41, 84138), (51, 84207),

Gene: Thonko\_55 Start: 46989, Stop: 46534, Start Num: 16

Candidate Starts for Thonko\_55:

(Start: 16 @46989 has 4 MA's), (23, 46956), (37, 46806), (39, 46800), (46, 46746), (48, 46734), (52, 46692), (60, 46626), (66, 46587),

Gene: Zenteno07\_59 Start: 48384, Stop: 47932, Start Num: 16

Candidate Starts for Zenteno07\_59:

(Start: 16 @48384 has 4 MA's), (32, 48234), (33, 48216), (39, 48156), (53, 48042), (58, 47979), (65, 47943),

Gene: Zion\_10 Start: 5532, Stop: 5948, Start Num: 11

Candidate Starts for Zion\_10:

(Start: 11 @5532 has 8 MA's), (14, 5544), (38, 5742), (49, 5814), (59, 5922),