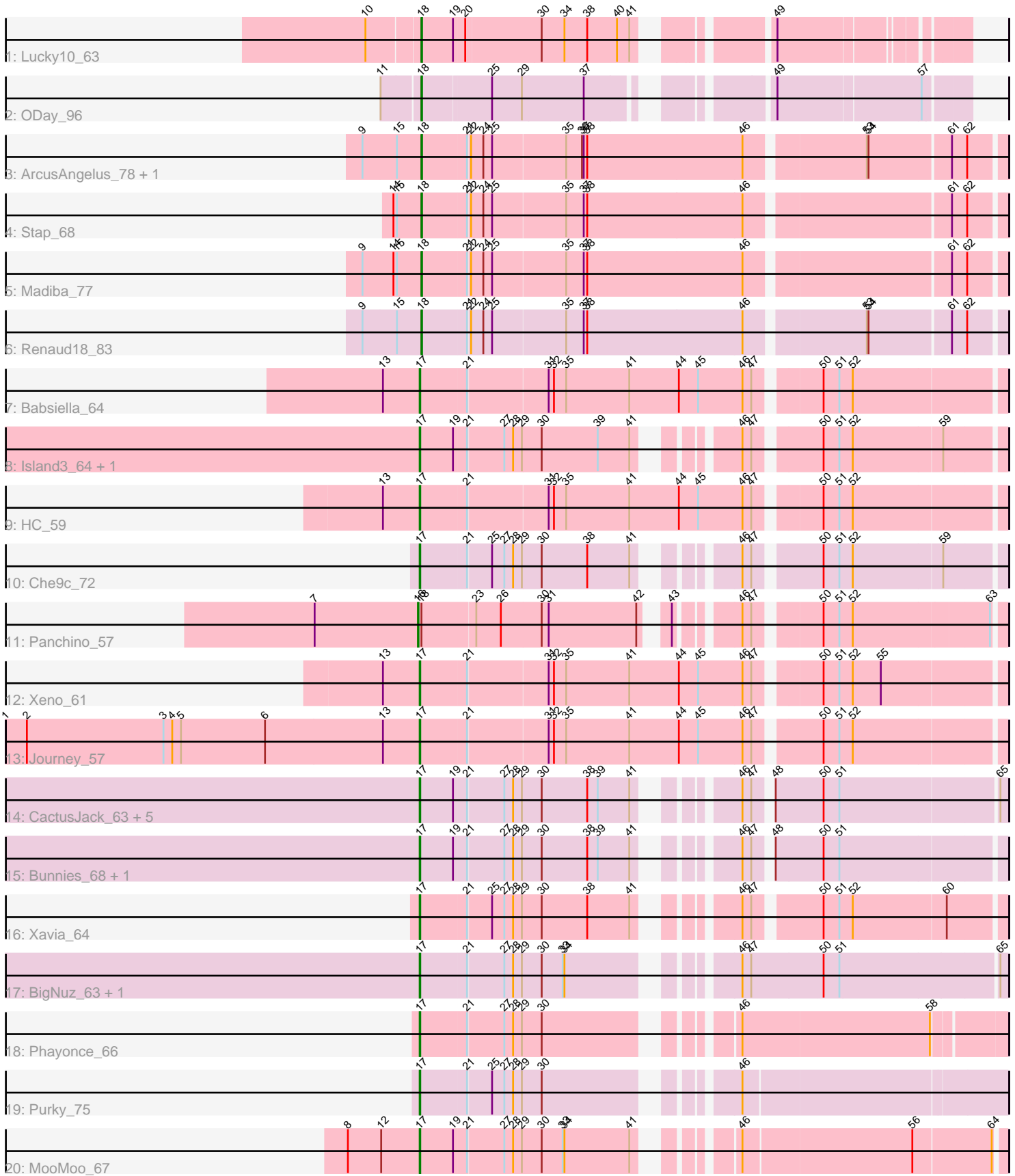


Pham 196743



Note: Tracks are now grouped by subcluster and scaled. Switching in subcluster is indicated by changes in track color. Track scale is now set by default to display the region 30 bp upstream of start 1 to 30 bp downstream of the last possible start. If this default region is judged to be packed too tightly with annotated starts, the track will be further scaled to only show that region of the ORF with annotated starts. This action will be indicated by adding "Zoomed" to the title. For starts, yellow indicates the location of called starts comprised solely of Glimmer/GeneMark auto-annotations, green indicates the location of called starts with at least 1 manual gene annotation.

Pham 196743 Report

This analysis was run 12/09/24 on database version 580.

Pham number 196743 has 29 members, 0 are drafts.

Phages represented in each track:

- Track 1 : Lucky10_63
- Track 2 : ODay_96
- Track 3 : ArcusAngelus_78, Chevrolet_80
- Track 4 : Stap_68
- Track 5 : Madiba_77
- Track 6 : Renaud18_83
- Track 7 : Babsiella_64
- Track 8 : Island3_64, Brujita_63
- Track 9 : HC_59
- Track 10 : Che9c_72
- Track 11 : Panchino_57
- Track 12 : Xeno_61
- Track 13 : Journey_57
- Track 14 : CactusJack_63, StressBall_62, Glaske_62, Willsammy_64, KilKor_63, Phalm_63
- Track 15 : Bunnies_68, Ksquared_66
- Track 16 : Xavia_64
- Track 17 : BigNuz_63, Nazo_64
- Track 18 : Phayonce_66
- Track 19 : Purky_75
- Track 20 : MooMoo_67

Summary of Final Annotations (See graph section above for start numbers):

The start number called the most often in the published annotations is 17, it was called in 21 of the 29 non-draft genes in the pham.

Genes that call this "Most Annotated" start:

- Babsiella_64, BigNuz_63, Brujita_63, Bunnies_68, CactusJack_63, Che9c_72, Glaske_62, HC_59, Island3_64, Journey_57, KilKor_63, Ksquared_66, MooMoo_67, Nazo_64, Phalm_63, Phayonce_66, Purky_75, StressBall_62, Willsammy_64, Xavia_64, Xeno_61,

Genes that have the "Most Annotated" start but do not call it:

-

Genes that do not have the "Most Annotated" start:

- ArcusAngelus_78, Chevrolet_80, Lucky10_63, Madiba_77, ODay_96, Panchino_57, Renaud18_83, Stap_68,

Summary by start number:

Start 16:

- Found in 1 of 29 (3.4%) of genes in pham
- Manual Annotations of this start: 1 of 29
- Called 100.0% of time when present
- Phage (with cluster) where this start called: Panchino_57 (N),

Start 17:

- Found in 21 of 29 (72.4%) of genes in pham
- Manual Annotations of this start: 21 of 29
- Called 100.0% of time when present
- Phage (with cluster) where this start called: Babsiella_64 (I1), BigNuz_63 (P4), Brujita_63 (I1), Bunnies_68 (P1), CactusJack_63 (P1), Che9c_72 (I2), Glaske_62 (P1), HC_59 (I1), Island3_64 (I1), Journey_57 (N), KilKor_63 (P1), Ksquared_66 (P1), MooMoo_67 (singleton), Nazo_64 (P4), Phalm_63 (P1), Phayonce_66 (P5), Purky_75 (P6), StressBall_62 (P1), Willsammy_64 (P1), Xavia_64 (P3), Xeno_61 (N),

Start 18:

- Found in 8 of 29 (27.6%) of genes in pham
- Manual Annotations of this start: 7 of 29
- Called 87.5% of time when present
- Phage (with cluster) where this start called: ArcusAngelus_78 (F1), Chevrolet_80 (F1), Lucky10_63 (DH), Madiba_77 (F1), ODay_96 (DN), Renaud18_83 (F4), Stap_68 (F1),

Summary by clusters:

There are 13 clusters represented in this pham: DN, P3, singleton, P1, F4, DH, P4, F1, I1, I2, N, P6, P5,

Info for manual annotations of cluster DH:

- Start number 18 was manually annotated 1 time for cluster DH.

Info for manual annotations of cluster DN:

- Start number 18 was manually annotated 1 time for cluster DN.

Info for manual annotations of cluster F1:

- Start number 18 was manually annotated 4 times for cluster F1.

Info for manual annotations of cluster F4:

- Start number 18 was manually annotated 1 time for cluster F4.

Info for manual annotations of cluster I1:

- Start number 17 was manually annotated 4 times for cluster I1.

Info for manual annotations of cluster I2:

- Start number 17 was manually annotated 1 time for cluster I2.

Info for manual annotations of cluster N:

- Start number 16 was manually annotated 1 time for cluster N.
- Start number 17 was manually annotated 2 times for cluster N.

Info for manual annotations of cluster P1:

- Start number 17 was manually annotated 8 times for cluster P1.

Info for manual annotations of cluster P3:

- Start number 17 was manually annotated 1 time for cluster P3.

Info for manual annotations of cluster P4:

- Start number 17 was manually annotated 2 times for cluster P4.

Info for manual annotations of cluster P5:

- Start number 17 was manually annotated 1 time for cluster P5.

Info for manual annotations of cluster P6:

- Start number 17 was manually annotated 1 time for cluster P6.

Gene Information:

Gene: ArcusAngelus_78 Start: 47565, Stop: 48512, Start Num: 18

Candidate Starts for ArcusAngelus_78:

(9, 47466), (15, 47523), (Start: 18 @47565 has 7 MA's), (21, 47640), (22, 47643), (24, 47664), (25, 47679), (35, 47802), (36, 47829), (37, 47832), (38, 47838), (46, 48102), (53, 48291), (54, 48294), (61, 48429), (62, 48453),

Gene: Babsiella_64 Start: 40664, Stop: 41602, Start Num: 17

Candidate Starts for Babsiella_64:

(13, 40604), (Start: 17 @40664 has 21 MA's), (21, 40739), (31, 40871), (32, 40880), (35, 40901), (41, 41009), (44, 41093), (45, 41126), (46, 41201), (47, 41216), (50, 41309), (51, 41336), (52, 41357),

Gene: BigNuz_63 Start: 41443, Stop: 42339, Start Num: 17

Candidate Starts for BigNuz_63:

(Start: 17 @41443 has 21 MA's), (21, 41518), (27, 41578), (28, 41593), (29, 41608), (30, 41641), (33, 41677), (34, 41680), (46, 41905), (47, 41920), (50, 42040), (51, 42067), (65, 42328),

Gene: Brujita_63 Start: 40794, Stop: 41660, Start Num: 17

Candidate Starts for Brujita_63:

(Start: 17 @40794 has 21 MA's), (19, 40848), (21, 40869), (27, 40929), (28, 40944), (29, 40959), (30, 40992), (39, 41088), (41, 41142), (46, 41256), (47, 41271), (50, 41367), (51, 41394), (52, 41415), (59, 41565),

Gene: Bunnies_68 Start: 42545, Stop: 43414, Start Num: 17

Candidate Starts for Bunnies_68:

(Start: 17 @42545 has 21 MA's), (19, 42599), (21, 42620), (27, 42680), (28, 42695), (29, 42710), (30, 42743), (38, 42821), (39, 42839), (41, 42893), (46, 43007), (47, 43022), (48, 43043), (50, 43121), (51, 43148),

Gene: CactusJack_63 Start: 41413, Stop: 42285, Start Num: 17

Candidate Starts for CactusJack_63:

(Start: 17 @41413 has 21 MA's), (19, 41467), (21, 41488), (27, 41548), (28, 41563), (29, 41578), (30, 41611), (38, 41689), (39, 41707), (41, 41761), (46, 41875), (47, 41890), (48, 41911), (50, 41989), (51, 42016), (65, 42274),

Gene: Che9c_72 Start: 50505, Stop: 51371, Start Num: 17

Candidate Starts for Che9c_72:

(Start: 17 @50505 has 21 MA's), (21, 50580), (25, 50619), (27, 50640), (28, 50655), (29, 50670), (30, 50703), (38, 50781), (41, 50853), (46, 50967), (47, 50982), (50, 51078), (51, 51105), (52, 51126), (59, 51276),

Gene: Chevrolet_80 Start: 47566, Stop: 48513, Start Num: 18

Candidate Starts for Chevrolet_80:

(9, 47467), (15, 47524), (Start: 18 @47566 has 7 MA's), (21, 47641), (22, 47644), (24, 47665), (25, 47680), (35, 47803), (36, 47830), (37, 47833), (38, 47839), (46, 48103), (53, 48292), (54, 48295), (61, 48430), (62, 48454),

Gene: Glaske_62 Start: 41413, Stop: 42285, Start Num: 17

Candidate Starts for Glaske_62:

(Start: 17 @41413 has 21 MA's), (19, 41467), (21, 41488), (27, 41548), (28, 41563), (29, 41578), (30, 41611), (38, 41689), (39, 41707), (41, 41761), (46, 41875), (47, 41890), (48, 41911), (50, 41989), (51, 42016), (65, 42274),

Gene: HC_59 Start: 38210, Stop: 39148, Start Num: 17

Candidate Starts for HC_59:

(13, 38150), (Start: 17 @38210 has 21 MA's), (21, 38285), (31, 38417), (32, 38426), (35, 38447), (41, 38555), (44, 38639), (45, 38672), (46, 38747), (47, 38762), (50, 38855), (51, 38882), (52, 38903),

Gene: Island3_64 Start: 40794, Stop: 41660, Start Num: 17

Candidate Starts for Island3_64:

(Start: 17 @40794 has 21 MA's), (19, 40848), (21, 40869), (27, 40929), (28, 40944), (29, 40959), (30, 40992), (39, 41088), (41, 41142), (46, 41256), (47, 41271), (50, 41367), (51, 41394), (52, 41415), (59, 41565),

Gene: Journey_57 Start: 37762, Stop: 38703, Start Num: 17

Candidate Starts for Journey_57:

(1, 37057), (2, 37093), (3, 37327), (4, 37342), (5, 37357), (6, 37501), (13, 37702), (Start: 17 @37762 has 21 MA's), (21, 37837), (31, 37969), (32, 37978), (35, 37999), (41, 38107), (44, 38191), (45, 38224), (46, 38299), (47, 38314), (50, 38410), (51, 38437), (52, 38458),

Gene: KilKor_63 Start: 42106, Stop: 42978, Start Num: 17

Candidate Starts for KilKor_63:

(Start: 17 @42106 has 21 MA's), (19, 42160), (21, 42181), (27, 42241), (28, 42256), (29, 42271), (30, 42304), (38, 42382), (39, 42400), (41, 42454), (46, 42568), (47, 42583), (48, 42604), (50, 42682), (51, 42709), (65, 42967),

Gene: Ksquared_66 Start: 42422, Stop: 43291, Start Num: 17

Candidate Starts for Ksquared_66:

(Start: 17 @42422 has 21 MA's), (19, 42476), (21, 42497), (27, 42557), (28, 42572), (29, 42587), (30, 42620), (38, 42698), (39, 42716), (41, 42770), (46, 42884), (47, 42899), (48, 42920), (50, 42998), (51, 43025),

Gene: Lucky10_63 Start: 39691, Stop: 40488, Start Num: 18

Candidate Starts for Lucky10_63:

(10, 39604), (Start: 18 @39691 has 7 MA's), (19, 39745), (20, 39763), (30, 39889), (34, 39928), (38, 39967), (40, 40018), (41, 40039), (49, 40207),

Gene: Madiba_77 Start: 47713, Stop: 48660, Start Num: 18

Candidate Starts for Madiba_77:

(9, 47614), (14, 47665), (15, 47671), (Start: 18 @47713 has 7 MA's), (21, 47788), (22, 47791), (24, 47812), (25, 47827), (35, 47950), (37, 47980), (38, 47986), (46, 48250), (61, 48577), (62, 48601),

Gene: MooMoo_67 Start: 43945, Stop: 44826, Start Num: 17

Candidate Starts for MooMoo_67:

(8, 43822), (12, 43879), (Start: 17 @43945 has 21 MA's), (19, 43999), (21, 44020), (27, 44080), (28, 44095), (29, 44110), (30, 44143), (33, 44179), (34, 44182), (41, 44293), (46, 44401), (56, 44683), (64, 44812),

Gene: Nazo_64 Start: 41628, Stop: 42524, Start Num: 17

Candidate Starts for Nazo_64:

(Start: 17 @41628 has 21 MA's), (21, 41703), (27, 41763), (28, 41778), (29, 41793), (30, 41826), (33, 41862), (34, 41865), (46, 42090), (47, 42105), (50, 42225), (51, 42252), (65, 42513),

Gene: ODay_96 Start: 51151, Stop: 51972, Start Num: 18

Candidate Starts for ODay_96:

(11, 51088), (Start: 18 @51151 has 7 MA's), (25, 51265), (29, 51316), (37, 51421), (49, 51661), (57, 51898),

Gene: Panchino_57 Start: 39053, Stop: 39931, Start Num: 16

Candidate Starts for Panchino_57:

(7, 38876), (Start: 16 @39053 has 1 MA's), (Start: 18 @39059 has 7 MA's), (23, 39149), (26, 39191), (30, 39260), (31, 39272), (42, 39422), (43, 39449), (46, 39533), (47, 39548), (50, 39641), (51, 39668), (52, 39689), (63, 39914),

Gene: Phalm_63 Start: 41404, Stop: 42276, Start Num: 17

Candidate Starts for Phalm_63:

(Start: 17 @41404 has 21 MA's), (19, 41458), (21, 41479), (27, 41539), (28, 41554), (29, 41569), (30, 41602), (38, 41680), (39, 41698), (41, 41752), (46, 41866), (47, 41881), (48, 41902), (50, 41980), (51, 42007), (65, 42265),

Gene: Phayonce_66 Start: 43928, Stop: 44809, Start Num: 17

Candidate Starts for Phayonce_66:

(Start: 17 @43928 has 21 MA's), (21, 44003), (27, 44063), (28, 44078), (29, 44093), (30, 44126), (46, 44384), (58, 44702),

Gene: Purky_75 Start: 45874, Stop: 46767, Start Num: 17

Candidate Starts for Purky_75:

(Start: 17 @45874 has 21 MA's), (21, 45949), (25, 45988), (27, 46009), (28, 46024), (29, 46039), (30, 46072), (46, 46336),

Gene: Renaud18_83 Start: 47137, Stop: 48084, Start Num: 18

Candidate Starts for Renaud18_83:

(9, 47038), (15, 47095), (Start: 18 @47137 has 7 MA's), (21, 47212), (22, 47215), (24, 47236), (25, 47251), (35, 47374), (37, 47404), (38, 47410), (46, 47674), (53, 47863), (54, 47866), (61, 48001), (62, 48025),

Gene: Stap_68 Start: 43382, Stop: 44329, Start Num: 18

Candidate Starts for Stap_68:

(14, 43334), (15, 43340), (Start: 18 @43382 has 7 MA's), (21, 43457), (22, 43460), (24, 43481), (25, 43496), (35, 43619), (37, 43649), (38, 43655), (46, 43919), (61, 44246), (62, 44270),

Gene: StressBall_62 Start: 41106, Stop: 41978, Start Num: 17

Candidate Starts for StressBall_62:

(Start: 17 @41106 has 21 MA's), (19, 41160), (21, 41181), (27, 41241), (28, 41256), (29, 41271), (30, 41304), (38, 41382), (39, 41400), (41, 41454), (46, 41568), (47, 41583), (48, 41604), (50, 41682), (51, 41709), (65, 41967),

Gene: Willsammy_64 Start: 41590, Stop: 42462, Start Num: 17

Candidate Starts for Willsammy_64:

(Start: 17 @41590 has 21 MA's), (19, 41644), (21, 41665), (27, 41725), (28, 41740), (29, 41755), (30, 41788), (38, 41866), (39, 41884), (41, 41938), (46, 42052), (47, 42067), (48, 42088), (50, 42166), (51, 42193), (65, 42451),

Gene: Xavia_64 Start: 45674, Stop: 46540, Start Num: 17

Candidate Starts for Xavia_64:

(Start: 17 @45674 has 21 MA's), (21, 45749), (25, 45788), (27, 45809), (28, 45824), (29, 45839), (30, 45872), (38, 45950), (41, 46022), (46, 46136), (47, 46151), (50, 46247), (51, 46274), (52, 46295), (60, 46451),

Gene: Xeno_61 Start: 38162, Stop: 39100, Start Num: 17

Candidate Starts for Xeno_61:

(13, 38102), (Start: 17 @38162 has 21 MA's), (21, 38237), (31, 38369), (32, 38378), (35, 38399), (41, 38507), (44, 38591), (45, 38624), (46, 38699), (47, 38714), (50, 38807), (51, 38834), (52, 38855), (55, 38903),