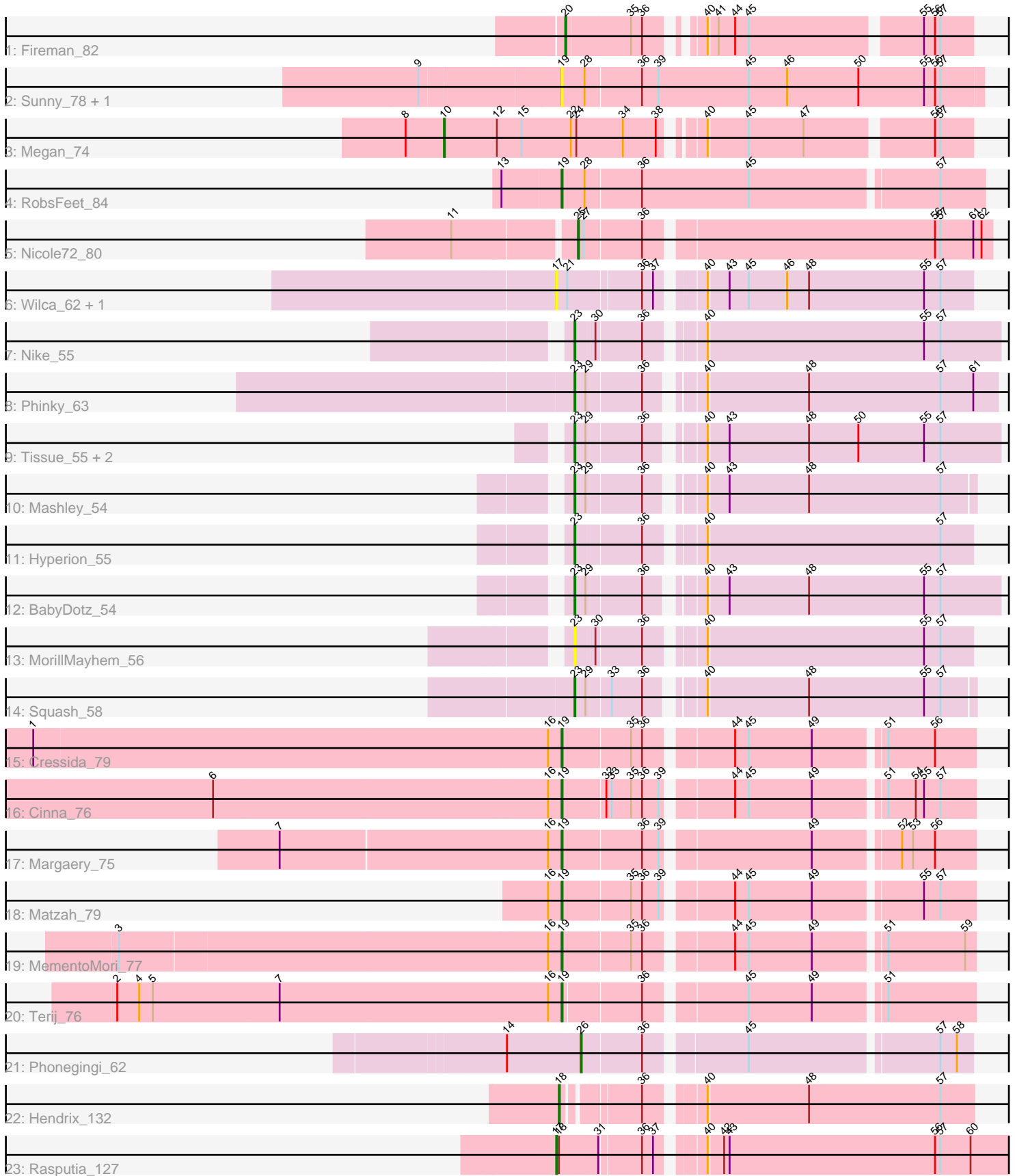


Pham 196756



Note: Tracks are now grouped by subcluster and scaled. Switching in subcluster is indicated by changes in track color. Track scale is now set by default to display the region 30 bp upstream of start 1 to 30 bp downstream of the last possible start. If this default region is judged to be packed too tightly with annotated starts, the track will be further scaled to only show that region of the ORF with annotated starts. This action will be indicated by adding "Zoomed" to the title. For starts, yellow indicates the location of called starts comprised solely of Glimmer/GeneMark auto-annotations, green indicates the location of called starts with at least 1 manual gene annotation.

Pham 196756 Report

This analysis was run 12/09/24 on database version 580.

Pham number 196756 has 27 members, 7 are drafts.

Phages represented in each track:

- Track 1 : Fireman_82
- Track 2 : Sunny_78, Merry_78
- Track 3 : Megan_74
- Track 4 : RobsFeet_84
- Track 5 : Nicole72_80
- Track 6 : Wilca_62, BirdInFrench_62
- Track 7 : Nike_55
- Track 8 : Phinky_63
- Track 9 : Tissue_55, Kyva_57, Grassboy_57
- Track 10 : Mashley_54
- Track 11 : Hyperion_55
- Track 12 : BabyDotz_54
- Track 13 : MorillMayhem_56
- Track 14 : Squash_58
- Track 15 : Cressida_79
- Track 16 : Cinna_76
- Track 17 : Margaery_75
- Track 18 : Matzah_79
- Track 19 : MementoMori_77
- Track 20 : Terij_76
- Track 21 : Phonegingi_62
- Track 22 : Hendrix_132
- Track 23 : Rasputia_127

Summary of Final Annotations (See graph section above for start numbers):

The start number called the most often in the published annotations is 19, it was called in 7 of the 20 non-draft genes in the pham.

Genes that call this "Most Annotated" start:

- Cinna_76, Cressida_79, Margaery_75, Matzah_79, MementoMori_77, Merry_78, RobsFeet_84, Sunny_78, Terij_76,

Genes that have the "Most Annotated" start but do not call it:

-

Genes that do not have the "Most Annotated" start:

- BabyDotz_54, BirdInFrench_62, Fireman_82, Grassboy_57, Hendrix_132, Hyperion_55, Kyva_57, Mashley_54, Megan_74, MorillMayhem_56, Nicole72_80, Nike_55, Phinky_63, Phonegingi_62, Rasputia_127, Squash_58, Tissue_55, Wilca_62,

Summary by start number:

Start 10:

- Found in 1 of 27 (3.7%) of genes in pham
- Manual Annotations of this start: 1 of 20
- Called 100.0% of time when present
- Phage (with cluster) where this start called: Megan_74 (EC),

Start 17:

- Found in 3 of 27 (11.1%) of genes in pham
- Manual Annotations of this start: 1 of 20
- Called 100.0% of time when present
- Phage (with cluster) where this start called: BirdInFrench_62 (EG), Rasputia_127 (GC), Wilca_62 (EG),

Start 18:

- Found in 2 of 27 (7.4%) of genes in pham
- Manual Annotations of this start: 1 of 20
- Called 50.0% of time when present
- Phage (with cluster) where this start called: Hendrix_132 (GC),

Start 19:

- Found in 9 of 27 (33.3%) of genes in pham
- Manual Annotations of this start: 7 of 20
- Called 100.0% of time when present
- Phage (with cluster) where this start called: Cinna_76 (EI), Cressida_79 (EI), Margaery_75 (EI), Matzah_79 (EI), MementoMori_77 (EI), Merry_78 (EC), RobsFeet_84 (EC), Sunny_78 (EC), Terij_76 (EI),

Start 20:

- Found in 1 of 27 (3.7%) of genes in pham
- Manual Annotations of this start: 1 of 20
- Called 100.0% of time when present
- Phage (with cluster) where this start called: Fireman_82 (EC),

Start 23:

- Found in 10 of 27 (37.0%) of genes in pham
- Manual Annotations of this start: 7 of 20
- Called 100.0% of time when present
- Phage (with cluster) where this start called: BabyDotz_54 (EG), Grassboy_57 (EG), Hyperion_55 (EG), Kyva_57 (EG), Mashley_54 (EG), MorillMayhem_56 (EG), Nike_55 (EG), Phinky_63 (EG), Squash_58 (EG), Tissue_55 (EG),

Start 25:

- Found in 1 of 27 (3.7%) of genes in pham

- Manual Annotations of this start: 1 of 20
- Called 100.0% of time when present
- Phage (with cluster) where this start called: Nicole72_80 (EC),

Start 26:

- Found in 1 of 27 (3.7%) of genes in pham
- Manual Annotations of this start: 1 of 20
- Called 100.0% of time when present
- Phage (with cluster) where this start called: Phonegingi_62 (GA),

Summary by clusters:

There are 5 clusters represented in this pham: GC, EG, EI, GA, EC,

Info for manual annotations of cluster EC:

- Start number 10 was manually annotated 1 time for cluster EC.
- Start number 19 was manually annotated 1 time for cluster EC.
- Start number 20 was manually annotated 1 time for cluster EC.
- Start number 25 was manually annotated 1 time for cluster EC.

Info for manual annotations of cluster EG:

- Start number 23 was manually annotated 7 times for cluster EG.

Info for manual annotations of cluster EI:

- Start number 19 was manually annotated 6 times for cluster EI.

Info for manual annotations of cluster GA:

- Start number 26 was manually annotated 1 time for cluster GA.

Info for manual annotations of cluster GC:

- Start number 17 was manually annotated 1 time for cluster GC.
- Start number 18 was manually annotated 1 time for cluster GC.

Gene Information:

Gene: BabyDotz_54 Start: 42571, Stop: 42137, Start Num: 23

Candidate Starts for BabyDotz_54:

(Start: 23 @42571 has 7 MA's), (29, 42559), (36, 42502), (40, 42454), (43, 42433), (48, 42346), (55, 42220), (57, 42202),

Gene: BirdInFrench_62 Start: 42664, Stop: 42239, Start Num: 17

Candidate Starts for BirdInFrench_62:

(Start: 17 @42664 has 1 MA's), (21, 42652), (36, 42577), (37, 42565), (40, 42526), (43, 42505), (45, 42484), (46, 42442), (48, 42418), (55, 42292), (57, 42274),

Gene: Cinna_76 Start: 47553, Stop: 47969, Start Num: 19

Candidate Starts for Cinna_76:

(6, 47175), (16, 47538), (Start: 19 @47553 has 7 MA's), (32, 47598), (33, 47604), (35, 47625), (36, 47637), (39, 47655), (44, 47721), (45, 47736), (49, 47805), (51, 47874), (54, 47904), (55, 47913), (57, 47931),

Gene: Cressida_79 Start: 47166, Stop: 47582, Start Num: 19

Candidate Starts for Cressida_79:

(1, 46593), (16, 47151), (Start: 19 @47166 has 7 MA's), (35, 47238), (36, 47250), (44, 47334), (45, 47349), (49, 47418), (51, 47487), (56, 47538),

Gene: Fireman_82 Start: 48211, Stop: 48606, Start Num: 20

Candidate Starts for Fireman_82:

(Start: 20 @48211 has 1 MA's), (35, 48280), (36, 48292), (40, 48334), (41, 48343), (44, 48361), (45, 48376), (55, 48553), (56, 48565), (57, 48571),

Gene: Grassboy_57 Start: 42389, Stop: 41955, Start Num: 23

Candidate Starts for Grassboy_57:

(Start: 23 @42389 has 7 MA's), (29, 42377), (36, 42320), (40, 42272), (43, 42251), (48, 42164), (50, 42110), (55, 42038), (57, 42020),

Gene: Hendrix_132 Start: 83851, Stop: 84261, Start Num: 18

Candidate Starts for Hendrix_132:

(Start: 18 @83851 has 1 MA's), (36, 83923), (40, 83974), (48, 84082), (57, 84226),

Gene: Hyperion_55 Start: 42187, Stop: 41780, Start Num: 23

Candidate Starts for Hyperion_55:

(Start: 23 @42187 has 7 MA's), (36, 42118), (40, 42067), (57, 41815),

Gene: Kyva_57 Start: 42446, Stop: 42012, Start Num: 23

Candidate Starts for Kyva_57:

(Start: 23 @42446 has 7 MA's), (29, 42434), (36, 42377), (40, 42329), (43, 42308), (48, 42221), (50, 42167), (55, 42095), (57, 42077),

Gene: Margaery_75 Start: 46873, Stop: 47289, Start Num: 19

Candidate Starts for Margaery_75:

(7, 46570), (16, 46858), (Start: 19 @46873 has 7 MA's), (36, 46957), (39, 46975), (49, 47125), (52, 47209), (53, 47221), (56, 47245),

Gene: Mashley_54 Start: 41963, Stop: 41559, Start Num: 23

Candidate Starts for Mashley_54:

(Start: 23 @41963 has 7 MA's), (29, 41951), (36, 41894), (40, 41846), (43, 41825), (48, 41738), (57, 41594),

Gene: Matzah_79 Start: 47966, Stop: 48382, Start Num: 19

Candidate Starts for Matzah_79:

(16, 47951), (Start: 19 @47966 has 7 MA's), (35, 48038), (36, 48050), (39, 48068), (44, 48134), (45, 48149), (49, 48218), (55, 48326), (57, 48344),

Gene: Megan_74 Start: 48952, Stop: 49488, Start Num: 10

Candidate Starts for Megan_74:

(8, 48910), (Start: 10 @48952 has 1 MA's), (12, 49009), (15, 49036), (22, 49090), (24, 49096), (34, 49147), (38, 49183), (40, 49216), (45, 49258), (47, 49318), (56, 49447), (57, 49453),

Gene: MementoMori_77 Start: 47301, Stop: 47717, Start Num: 19

Candidate Starts for MementoMori_77:

(3, 46824), (16, 47286), (Start: 19 @47301 has 7 MA's), (35, 47373), (36, 47385), (44, 47469), (45, 47484), (49, 47553), (51, 47622), (59, 47706),

Gene: Merry_78 Start: 47073, Stop: 47528, Start Num: 19

Candidate Starts for Merry_78:

(9, 46923), (Start: 19 @47073 has 7 MA's), (28, 47097), (36, 47157), (39, 47175), (45, 47274), (46, 47316), (50, 47394), (55, 47466), (56, 47478), (57, 47484),

Gene: MorillMayhem_56 Start: 42311, Stop: 41904, Start Num: 23

Candidate Starts for MorillMayhem_56:

(Start: 23 @42311 has 7 MA's), (30, 42290), (36, 42242), (40, 42191), (55, 41957), (57, 41939),

Gene: Nicole72_80 Start: 51697, Stop: 52128, Start Num: 25

Candidate Starts for Nicole72_80:

(11, 51571), (Start: 25 @51697 has 1 MA's), (27, 51703), (36, 51763), (56, 52066), (57, 52072), (61, 52108), (62, 52117),

Gene: Nike_55 Start: 42352, Stop: 41915, Start Num: 23

Candidate Starts for Nike_55:

(Start: 23 @42352 has 7 MA's), (30, 42331), (36, 42283), (40, 42232), (55, 41998), (57, 41980),

Gene: Phinky_63 Start: 44073, Stop: 43642, Start Num: 23

Candidate Starts for Phinky_63:

(Start: 23 @44073 has 7 MA's), (29, 44061), (36, 44004), (40, 43956), (48, 43848), (57, 43704), (61, 43668),

Gene: Phonegingi_62 Start: 36530, Stop: 36922, Start Num: 26

Candidate Starts for Phonegingi_62:

(14, 36452), (Start: 26 @36530 has 1 MA's), (36, 36593), (45, 36692), (57, 36887), (58, 36905),

Gene: Rasputia_127 Start: 81149, Stop: 81685, Start Num: 17

Candidate Starts for Rasputia_127:

(Start: 17 @81149 has 1 MA's), (Start: 18 @81152 has 1 MA's), (31, 81194), (36, 81236), (37, 81248), (40, 81287), (42, 81302), (43, 81308), (56, 81533), (57, 81539), (60, 81572),

Gene: RobsFeet_84 Start: 47768, Stop: 48211, Start Num: 19

Candidate Starts for RobsFeet_84:

(13, 47705), (Start: 19 @47768 has 7 MA's), (28, 47792), (36, 47852), (45, 47969), (57, 48164),

Gene: Squash_58 Start: 42357, Stop: 41953, Start Num: 23

Candidate Starts for Squash_58:

(Start: 23 @42357 has 7 MA's), (29, 42345), (33, 42321), (36, 42288), (40, 42240), (48, 42132), (55, 42006), (57, 41988),

Gene: Sunny_78 Start: 47075, Stop: 47530, Start Num: 19

Candidate Starts for Sunny_78:

(9, 46925), (Start: 19 @47075 has 7 MA's), (28, 47099), (36, 47159), (39, 47177), (45, 47276), (46, 47318), (50, 47396), (55, 47468), (56, 47480), (57, 47486),

Gene: Terij_76 Start: 46236, Stop: 46649, Start Num: 19

Candidate Starts for Terij_76:

(2, 45753), (4, 45777), (5, 45792), (7, 45930), (16, 46221), (Start: 19 @46236 has 7 MA's), (36, 46317), (45, 46416), (49, 46485), (51, 46554),

Gene: Tissue_55 Start: 42285, Stop: 41851, Start Num: 23

Candidate Starts for Tissue_55:

(Start: 23 @42285 has 7 MA's), (29, 42273), (36, 42216), (40, 42168), (43, 42147), (48, 42060), (50, 42006), (55, 41934), (57, 41916),

Gene: Wilca_62 Start: 42664, Stop: 42239, Start Num: 17

Candidate Starts for Wilca_62:

(Start: 17 @42664 has 1 MA's), (21, 42652), (36, 42577), (37, 42565), (40, 42526), (43, 42505), (45, 42484), (46, 42442), (48, 42418), (55, 42292), (57, 42274),