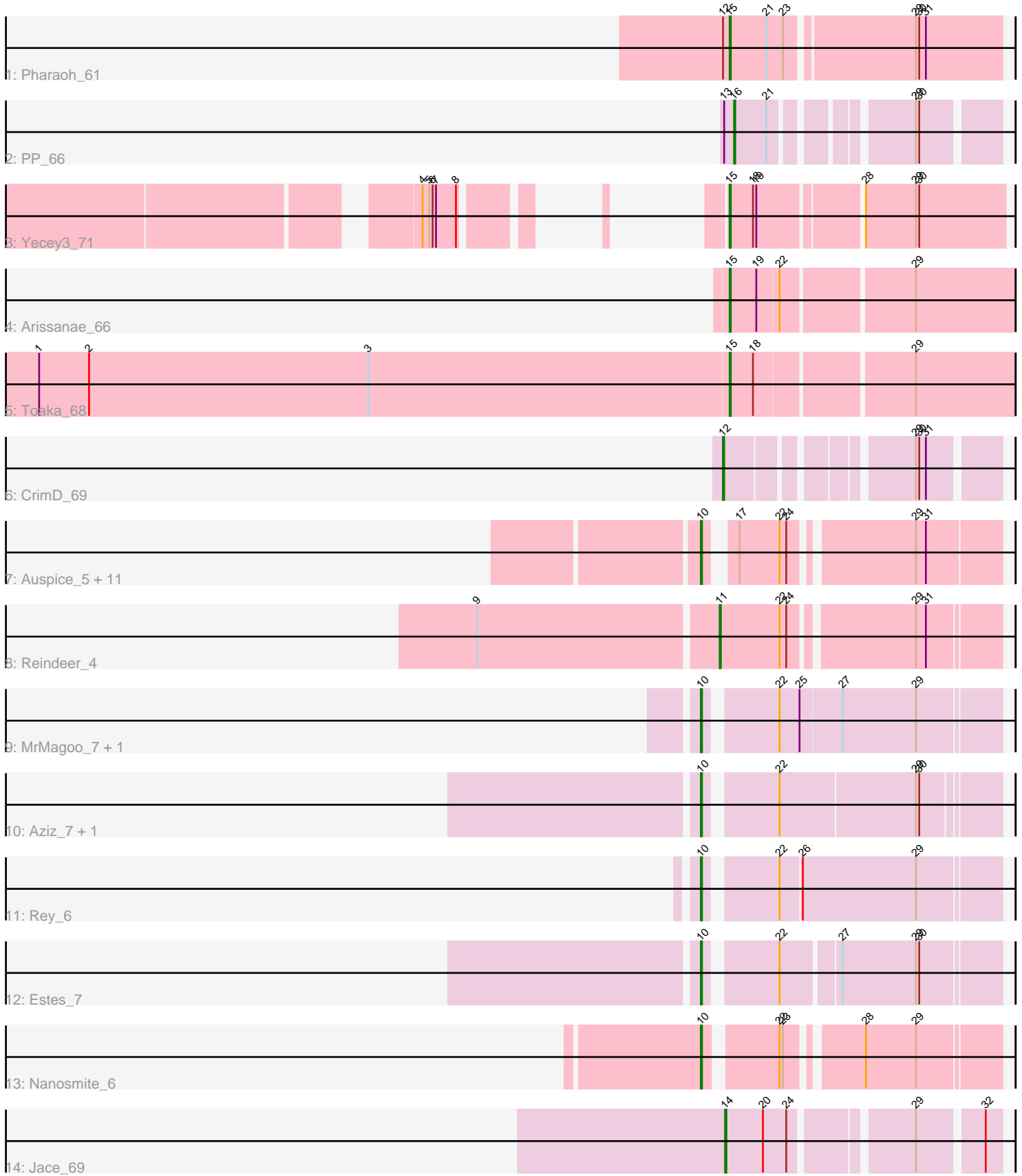


Pham 196758



Note: Tracks are now grouped by subcluster and scaled. Switching in subcluster is indicated by changes in track color. Track scale is now set by default to display the region 30 bp upstream of start 1 to 30 bp downstream of the last possible start. If this default region is judged to be packed too tightly with annotated starts, the track will be further scaled to only show that region of the ORF with annotated starts. This action will be indicated by adding "Zoomed" to the title. For starts, yellow indicates the location of called starts comprised solely of Glimmer/GeneMark auto-annotations, green indicates the location of called starts with at least 1 manual gene annotation.

## Pham 196758 Report

This analysis was run 12/09/24 on database version 580.

Pham number 196758 has 27 members, 0 are drafts.

Phages represented in each track:

- Track 1 : Pharaoh\_61
- Track 2 : PP\_66
- Track 3 : Yecey3\_71
- Track 4 : Arissanae\_66
- Track 5 : Toaka\_68
- Track 6 : CrimD\_69
- Track 7 : Auspice\_5, Diminimus\_6, TyDawg\_5, Dulcita\_6, PegLeg\_5, Bongo\_5, LilhomieP\_5, Glaske16\_6, SlimJimmy\_5, Bricole\_5, Skinny\_6, IPhane7\_5
- Track 8 : Reindeer\_4
- Track 9 : MrMagoo\_7, GardenSalsa\_7
- Track 10 : Aziz\_7, GenevaB15\_7
- Track 11 : Rey\_6
- Track 12 : Estes\_7
- Track 13 : Nanosmite\_6
- Track 14 : Jace\_69

### ***Summary of Final Annotations (See graph section above for start numbers):***

The start number called the most often in the published annotations is 10, it was called in 19 of the 27 non-draft genes in the pham.

Genes that call this "Most Annotated" start:

- Auspice\_5, Aziz\_7, Bongo\_5, Bricole\_5, Diminimus\_6, Dulcita\_6, Estes\_7, GardenSalsa\_7, GenevaB15\_7, Glaske16\_6, IPhane7\_5, LilhomieP\_5, MrMagoo\_7, Nanosmite\_6, PegLeg\_5, Rey\_6, Skinny\_6, SlimJimmy\_5, TyDawg\_5,

Genes that have the "Most Annotated" start but do not call it:

- 

Genes that do not have the "Most Annotated" start:

- Arissanae\_66, CrimD\_69, Jace\_69, PP\_66, Pharaoh\_61, Reindeer\_4, Toaka\_68, Yecey3\_71,

### **Summary by start number:**

Start 10:

- Found in 19 of 27 ( 70.4% ) of genes in pham
- Manual Annotations of this start: 19 of 27
- Called 100.0% of time when present
- Phage (with cluster) where this start called: Auspice\_5 (M1), Aziz\_7 (M2), Bongo\_5 (M1), Bricole\_5 (M1), Diminimus\_6 (M1), Dulcita\_6 (M1), Estes\_7 (M2), GardenSalsa\_7 (M2), GenevaB15\_7 (M2), Glaske16\_6 (M1), IPhone7\_5 (M1), LilhomieP\_5 (M1), MrMagoo\_7 (M2), Nanosmite\_6 (M3), PegLeg\_5 (M1), Rey\_6 (M2), Skinny\_6 (M1), SlimJimmy\_5 (M1), TyDawg\_5 (M1),

Start 11:

- Found in 1 of 27 ( 3.7% ) of genes in pham
- Manual Annotations of this start: 1 of 27
- Called 100.0% of time when present
- Phage (with cluster) where this start called: Reindeer\_4 (M1),

Start 12:

- Found in 2 of 27 ( 7.4% ) of genes in pham
- Manual Annotations of this start: 1 of 27
- Called 50.0% of time when present
- Phage (with cluster) where this start called: CrimD\_69 (K1),

Start 14:

- Found in 1 of 27 ( 3.7% ) of genes in pham
- Manual Annotations of this start: 1 of 27
- Called 100.0% of time when present
- Phage (with cluster) where this start called: Jace\_69 (singleton),

Start 15:

- Found in 4 of 27 ( 14.8% ) of genes in pham
- Manual Annotations of this start: 4 of 27
- Called 100.0% of time when present
- Phage (with cluster) where this start called: Arissanae\_66 (A9), Pharaoh\_61 (A12), Toaka\_68 (A9), Yecy3\_71 (A9),

Start 16:

- Found in 1 of 27 ( 3.7% ) of genes in pham
- Manual Annotations of this start: 1 of 27
- Called 100.0% of time when present
- Phage (with cluster) where this start called: PP\_66 (A7),

**Summary by clusters:**

There are 8 clusters represented in this pham: singleton, A7, A12, K1, M1, M3, M2, A9,

Info for manual annotations of cluster A12:

- Start number 15 was manually annotated 1 time for cluster A12.

Info for manual annotations of cluster A7:

- Start number 16 was manually annotated 1 time for cluster A7.

Info for manual annotations of cluster A9:

- Start number 15 was manually annotated 3 times for cluster A9.

Info for manual annotations of cluster K1:

- Start number 12 was manually annotated 1 time for cluster K1.

Info for manual annotations of cluster M1:

- Start number 10 was manually annotated 12 times for cluster M1.
- Start number 11 was manually annotated 1 time for cluster M1.

Info for manual annotations of cluster M2:

- Start number 10 was manually annotated 6 times for cluster M2.

Info for manual annotations of cluster M3:

- Start number 10 was manually annotated 1 time for cluster M3.

### ***Gene Information:***

Gene: Arissanae\_66 Start: 41220, Stop: 40978, Start Num: 15

Candidate Starts for Arissanae\_66:

(Start: 15 @41220 has 4 MA's), (19, 41196), (22, 41178), (29, 41067),

Gene: Auspice\_5 Start: 2366, Stop: 2133, Start Num: 10

Candidate Starts for Auspice\_5:

(Start: 10 @2366 has 19 MA's), (17, 2348), (22, 2312), (24, 2306), (29, 2207), (31, 2198),

Gene: Aziz\_7 Start: 2636, Stop: 2391, Start Num: 10

Candidate Starts for Aziz\_7:

(Start: 10 @2636 has 19 MA's), (22, 2579), (29, 2459), (30, 2456),

Gene: Bongo\_5 Start: 2366, Stop: 2133, Start Num: 10

Candidate Starts for Bongo\_5:

(Start: 10 @2366 has 19 MA's), (17, 2348), (22, 2312), (24, 2306), (29, 2207), (31, 2198),

Gene: Bricole\_5 Start: 2365, Stop: 2132, Start Num: 10

Candidate Starts for Bricole\_5:

(Start: 10 @2365 has 19 MA's), (17, 2347), (22, 2311), (24, 2305), (29, 2206), (31, 2197),

Gene: CrimD\_69 Start: 44683, Stop: 44892, Start Num: 12

Candidate Starts for CrimD\_69:

(Start: 12 @44683 has 1 MA's), (29, 44824), (30, 44827), (31, 44833),

Gene: Diminimus\_6 Start: 2365, Stop: 2132, Start Num: 10

Candidate Starts for Diminimus\_6:

(Start: 10 @2365 has 19 MA's), (17, 2347), (22, 2311), (24, 2305), (29, 2206), (31, 2197),

Gene: Dulcita\_6 Start: 2365, Stop: 2132, Start Num: 10

Candidate Starts for Dulcita\_6:

(Start: 10 @2365 has 19 MA's), (17, 2347), (22, 2311), (24, 2305), (29, 2206), (31, 2197),

Gene: Estes\_7 Start: 2641, Stop: 2399, Start Num: 10

Candidate Starts for Estes\_7:

(Start: 10 @2641 has 19 MA's), (22, 2584), (27, 2536), (29, 2470), (30, 2467),

Gene: GardenSalsa\_7 Start: 2660, Stop: 2412, Start Num: 10

Candidate Starts for GardenSalsa\_7:

(Start: 10 @2660 has 19 MA's), (22, 2603), (25, 2585), (27, 2549), (29, 2483),

Gene: GenevaB15\_7 Start: 2636, Stop: 2391, Start Num: 10

Candidate Starts for GenevaB15\_7:

(Start: 10 @2636 has 19 MA's), (22, 2579), (29, 2459), (30, 2456),

Gene: Glaske16\_6 Start: 2365, Stop: 2132, Start Num: 10

Candidate Starts for Glaske16\_6:

(Start: 10 @2365 has 19 MA's), (17, 2347), (22, 2311), (24, 2305), (29, 2206), (31, 2197),

Gene: IPhone7\_5 Start: 2366, Stop: 2133, Start Num: 10

Candidate Starts for IPhone7\_5:

(Start: 10 @2366 has 19 MA's), (17, 2348), (22, 2312), (24, 2306), (29, 2207), (31, 2198),

Gene: Jace\_69 Start: 40976, Stop: 41194, Start Num: 14

Candidate Starts for Jace\_69:

(Start: 14 @40976 has 1 MA's), (20, 41009), (24, 41030), (29, 41126), (32, 41180),

Gene: LilhomieP\_5 Start: 2366, Stop: 2133, Start Num: 10

Candidate Starts for LilhomieP\_5:

(Start: 10 @2366 has 19 MA's), (17, 2348), (22, 2312), (24, 2306), (29, 2207), (31, 2198),

Gene: MrMagoo\_7 Start: 2660, Stop: 2412, Start Num: 10

Candidate Starts for MrMagoo\_7:

(Start: 10 @2660 has 19 MA's), (22, 2603), (25, 2585), (27, 2549), (29, 2483),

Gene: Nanosmite\_6 Start: 2681, Stop: 2448, Start Num: 10

Candidate Starts for Nanosmite\_6:

(Start: 10 @2681 has 19 MA's), (22, 2624), (23, 2621), (28, 2564), (29, 2519),

Gene: PP\_66 Start: 45311, Stop: 45114, Start Num: 16

Candidate Starts for PP\_66:

(13, 45320), (Start: 16 @45311 has 1 MA's), (21, 45284), (29, 45182), (30, 45179),

Gene: PegLeg\_5 Start: 2365, Stop: 2132, Start Num: 10

Candidate Starts for PegLeg\_5:

(Start: 10 @2365 has 19 MA's), (17, 2347), (22, 2311), (24, 2305), (29, 2206), (31, 2197),

Gene: Pharaoh\_61 Start: 40405, Stop: 40172, Start Num: 15

Candidate Starts for Pharaoh\_61:

(Start: 12 @40411 has 1 MA's), (Start: 15 @40405 has 4 MA's), (21, 40372), (23, 40357), (29, 40249), (30, 40246), (31, 40240),

Gene: Reindeer\_4 Start: 2200, Stop: 1967, Start Num: 11

Candidate Starts for Reindeer\_4:

(9, 2410), (Start: 11 @2200 has 1 MA's), (22, 2146), (24, 2140), (29, 2038), (31, 2029),

Gene: Rey\_6 Start: 2648, Stop: 2400, Start Num: 10

Candidate Starts for Rey\_6:

(Start: 10 @2648 has 19 MA's), (22, 2591), (26, 2573), (29, 2471),

Gene: Skinny\_6 Start: 2365, Stop: 2132, Start Num: 10

Candidate Starts for Skinny\_6:

(Start: 10 @2365 has 19 MA's), (17, 2347), (22, 2311), (24, 2305), (29, 2206), (31, 2197),

Gene: SlimJimmy\_5 Start: 2365, Stop: 2132, Start Num: 10

Candidate Starts for SlimJimmy\_5:

(Start: 10 @2365 has 19 MA's), (17, 2347), (22, 2311), (24, 2305), (29, 2206), (31, 2197),

Gene: Toaka\_68 Start: 40924, Stop: 40682, Start Num: 15

Candidate Starts for Toaka\_68:

(1, 41545), (2, 41500), (3, 41248), (Start: 15 @40924 has 4 MA's), (18, 40903), (29, 40771),

Gene: TyDawg\_5 Start: 2366, Stop: 2133, Start Num: 10

Candidate Starts for TyDawg\_5:

(Start: 10 @2366 has 19 MA's), (17, 2348), (22, 2312), (24, 2306), (29, 2207), (31, 2198),

Gene: Yecey3\_71 Start: 41130, Stop: 40897, Start Num: 15

Candidate Starts for Yecey3\_71:

(4, 41235), (5, 41229), (6, 41226), (7, 41223), (8, 41205), (Start: 15 @41130 has 4 MA's), (18, 41109), (19, 41106), (28, 41022), (29, 40977), (30, 40974),