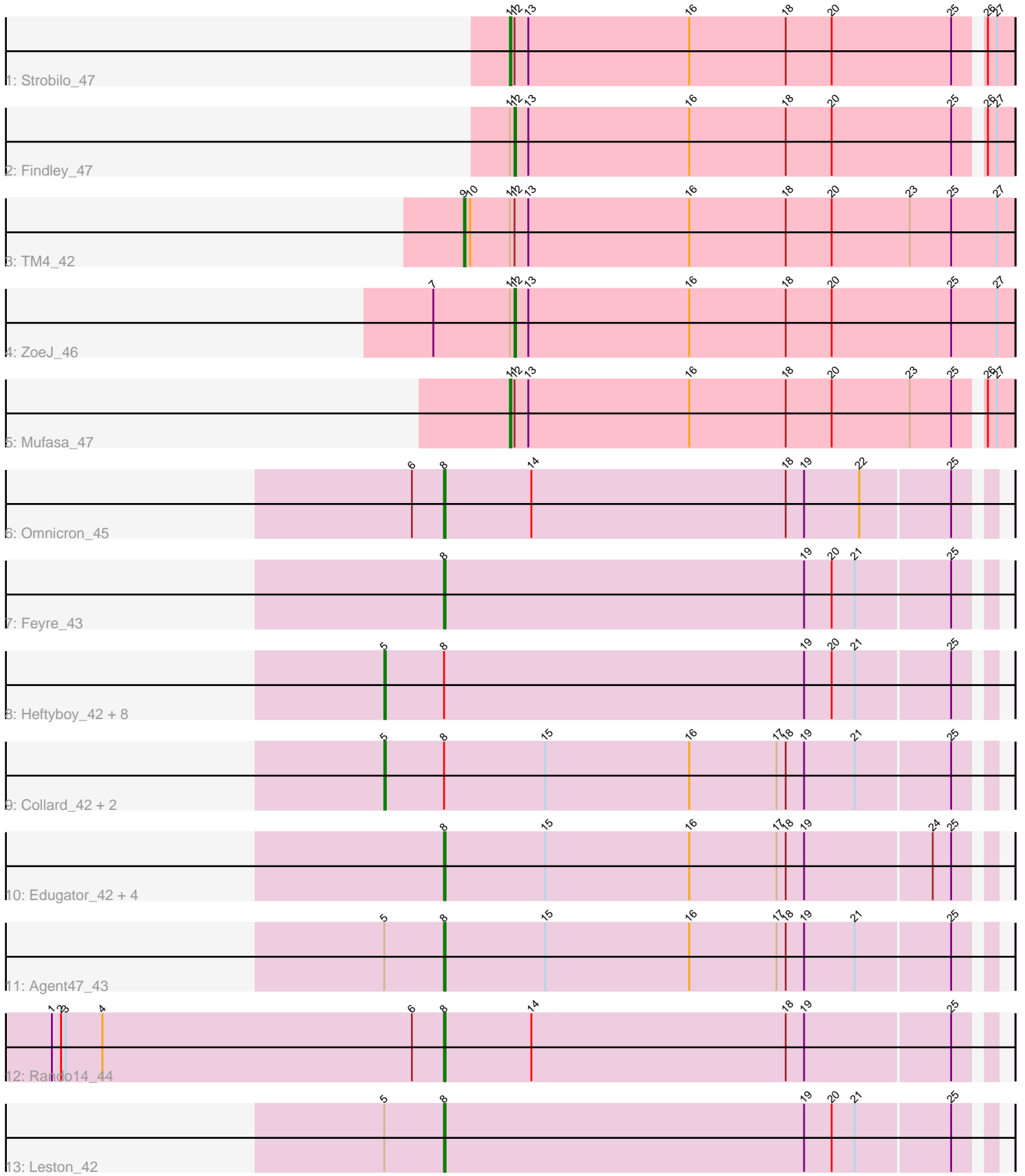


Pham 196759



Note: Tracks are now grouped by subcluster and scaled. Switching in subcluster is indicated by changes in track color. Track scale is now set by default to display the region 30 bp upstream of start 1 to 30 bp downstream of the last possible start. If this default region is judged to be packed too tightly with annotated starts, the track will be further scaled to only show that region of the ORF with annotated starts. This action will be indicated by adding "Zoomed" to the title. For starts, yellow indicates the location of called starts comprised solely of Glimmer/GeneMark auto-annotations, green indicates the location of called starts with at least 1 manual gene annotation.

Pham 196759 Report

This analysis was run 12/09/24 on database version 580.

Pham number 196759 has 27 members, 0 are drafts.

Phages represented in each track:

- Track 1 : Strobilo_47
- Track 2 : Findley_47
- Track 3 : TM4_42
- Track 4 : ZoeJ_46
- Track 5 : Mufasa_47
- Track 6 : Omnicron_45
- Track 7 : Feyre_43
- Track 8 : Heftyboy_42, Paola_42, Thyatira_44, Miryou_44, Guillsminger_43, Gengar_42, Waterfoul_43, OkiRoe_42, SoSeph_42
- Track 9 : Collard_42, Kratio_41, InvictusManeo_42
- Track 10 : Edugator_42, Psycho_43, AlleyCat_43, Larva_43, Dadosky_43
- Track 11 : Agent47_43
- Track 12 : Rando14_44
- Track 13 : Leston_42

Summary of Final Annotations (See graph section above for start numbers):

The start number called the most often in the published annotations is 5, it was called in 12 of the 27 non-draft genes in the pham.

Genes that call this "Most Annotated" start:

- Collard_42, Gengar_42, Guillsminger_43, Heftyboy_42, InvictusManeo_42, Kratio_41, Miryou_44, OkiRoe_42, Paola_42, SoSeph_42, Thyatira_44, Waterfoul_43,

Genes that have the "Most Annotated" start but do not call it:

- Agent47_43, Leston_42,

Genes that do not have the "Most Annotated" start:

- AlleyCat_43, Dadosky_43, Edugator_42, Feyre_43, Findley_47, Larva_43, Mufasa_47, Omnicron_45, Psycho_43, Rando14_44, Strobilo_47, TM4_42, ZoeJ_46,

Summary by start number:

Start 5:

- Found in 14 of 27 (51.9%) of genes in pham
- Manual Annotations of this start: 12 of 27
- Called 85.7% of time when present
- Phage (with cluster) where this start called: Collard_42 (K5), Gengar_42 (K5), Guillsminger_43 (K5), Heftyboy_42 (K5), InvictusManeo_42 (K5), Kratio_41 (K5), Miryou_44 (K5), OkiRoe_42 (K5), Paola_42 (K5), SoSeph_42 (K5), Thyatira_44 (K5), Waterfoul_43 (K5),

Start 8:

- Found in 22 of 27 (81.5%) of genes in pham
- Manual Annotations of this start: 10 of 27
- Called 45.5% of time when present
- Phage (with cluster) where this start called: Agent47_43 (K5), AlleyCat_43 (K5), Dadosky_43 (K5), Edugator_42 (K5), Feyre_43 (K5), Larva_43 (K5), Leston_42 (K5), Omnicron_45 (K5), Psycho_43 (K5), Rando14_44 (K5),

Start 9:

- Found in 1 of 27 (3.7%) of genes in pham
- Manual Annotations of this start: 1 of 27
- Called 100.0% of time when present
- Phage (with cluster) where this start called: TM4_42 (K2),

Start 11:

- Found in 5 of 27 (18.5%) of genes in pham
- Manual Annotations of this start: 2 of 27
- Called 40.0% of time when present
- Phage (with cluster) where this start called: Mufasa_47 (K2), Strobilo_47 (K2),

Start 12:

- Found in 5 of 27 (18.5%) of genes in pham
- Manual Annotations of this start: 2 of 27
- Called 40.0% of time when present
- Phage (with cluster) where this start called: Findley_47 (K2), ZoeJ_46 (K2),

Summary by clusters:

There are 2 clusters represented in this pham: K2, K5,

Info for manual annotations of cluster K2:

- Start number 9 was manually annotated 1 time for cluster K2.
- Start number 11 was manually annotated 2 times for cluster K2.
- Start number 12 was manually annotated 2 times for cluster K2.

Info for manual annotations of cluster K5:

- Start number 5 was manually annotated 12 times for cluster K5.
- Start number 8 was manually annotated 10 times for cluster K5.

Gene Information:

Gene: Agent47_43 Start: 34663, Stop: 35010, Start Num: 8

Candidate Starts for Agent47_43:

(Start: 5 @34624 has 12 MA's), (Start: 8 @34663 has 10 MA's), (15, 34729), (16, 34822), (17, 34879), (18, 34885), (19, 34897), (21, 34930), (25, 34990),

Gene: AlleyCat_43 Start: 34517, Stop: 34864, Start Num: 8

Candidate Starts for AlleyCat_43:

(Start: 8 @34517 has 10 MA's), (15, 34583), (16, 34676), (17, 34733), (18, 34739), (19, 34751), (24, 34832), (25, 34844),

Gene: Collard_42 Start: 34585, Stop: 34971, Start Num: 5

Candidate Starts for Collard_42:

(Start: 5 @34585 has 12 MA's), (Start: 8 @34624 has 10 MA's), (15, 34690), (16, 34783), (17, 34840), (18, 34846), (19, 34858), (21, 34891), (25, 34951),

Gene: Dadosky_43 Start: 34519, Stop: 34866, Start Num: 8

Candidate Starts for Dadosky_43:

(Start: 8 @34519 has 10 MA's), (15, 34585), (16, 34678), (17, 34735), (18, 34741), (19, 34753), (24, 34834), (25, 34846),

Gene: Edugator_42 Start: 34944, Stop: 35291, Start Num: 8

Candidate Starts for Edugator_42:

(Start: 8 @34944 has 10 MA's), (15, 35010), (16, 35103), (17, 35160), (18, 35166), (19, 35178), (24, 35259), (25, 35271),

Gene: Feyre_43 Start: 35869, Stop: 36216, Start Num: 8

Candidate Starts for Feyre_43:

(Start: 8 @35869 has 10 MA's), (19, 36103), (20, 36121), (21, 36136), (25, 36196),

Gene: Findley_47 Start: 37218, Stop: 37535, Start Num: 12

Candidate Starts for Findley_47:

(Start: 11 @37215 has 2 MA's), (Start: 12 @37218 has 2 MA's), (13, 37227), (16, 37332), (18, 37395), (20, 37425), (25, 37503), (26, 37518), (27, 37524),

Gene: Gengar_42 Start: 34445, Stop: 34831, Start Num: 5

Candidate Starts for Gengar_42:

(Start: 5 @34445 has 12 MA's), (Start: 8 @34484 has 10 MA's), (19, 34718), (20, 34736), (21, 34751), (25, 34811),

Gene: Guillsminger_43 Start: 34416, Stop: 34802, Start Num: 5

Candidate Starts for Guillsminger_43:

(Start: 5 @34416 has 12 MA's), (Start: 8 @34455 has 10 MA's), (19, 34689), (20, 34707), (21, 34722), (25, 34782),

Gene: Heftyboy_42 Start: 34566, Stop: 34952, Start Num: 5

Candidate Starts for Heftyboy_42:

(Start: 5 @34566 has 12 MA's), (Start: 8 @34605 has 10 MA's), (19, 34839), (20, 34857), (21, 34872), (25, 34932),

Gene: InvictusManeo_42 Start: 34628, Stop: 35014, Start Num: 5

Candidate Starts for InvictusManeo_42:

(Start: 5 @34628 has 12 MA's), (Start: 8 @34667 has 10 MA's), (15, 34733), (16, 34826), (17, 34883), (18, 34889), (19, 34901), (21, 34934), (25, 34994),

Gene: Kratio_41 Start: 34179, Stop: 34565, Start Num: 5

Candidate Starts for Kratio_41:

(Start: 5 @34179 has 12 MA's), (Start: 8 @34218 has 10 MA's), (15, 34284), (16, 34377), (17, 34434), (18, 34440), (19, 34452), (21, 34485), (25, 34545),

Gene: Larva_43 Start: 34386, Stop: 34733, Start Num: 8

Candidate Starts for Larva_43:

(Start: 8 @34386 has 10 MA's), (15, 34452), (16, 34545), (17, 34602), (18, 34608), (19, 34620), (24, 34701), (25, 34713),

Gene: Leston_42 Start: 34584, Stop: 34931, Start Num: 8

Candidate Starts for Leston_42:

(Start: 5 @34545 has 12 MA's), (Start: 8 @34584 has 10 MA's), (19, 34818), (20, 34836), (21, 34851), (25, 34911),

Gene: Miryou_44 Start: 36748, Stop: 37134, Start Num: 5

Candidate Starts for Miryou_44:

(Start: 5 @36748 has 12 MA's), (Start: 8 @36787 has 10 MA's), (19, 37021), (20, 37039), (21, 37054), (25, 37114),

Gene: Mufasa_47 Start: 36779, Stop: 37099, Start Num: 11

Candidate Starts for Mufasa_47:

(Start: 11 @36779 has 2 MA's), (Start: 12 @36782 has 2 MA's), (13, 36791), (16, 36896), (18, 36959), (20, 36989), (23, 37040), (25, 37067), (26, 37082), (27, 37088),

Gene: OkiRoe_42 Start: 34418, Stop: 34804, Start Num: 5

Candidate Starts for OkiRoe_42:

(Start: 5 @34418 has 12 MA's), (Start: 8 @34457 has 10 MA's), (19, 34691), (20, 34709), (21, 34724), (25, 34784),

Gene: Omnicron_45 Start: 34067, Stop: 34414, Start Num: 8

Candidate Starts for Omnicron_45:

(6, 34046), (Start: 8 @34067 has 10 MA's), (14, 34124), (18, 34289), (19, 34301), (22, 34337), (25, 34394),

Gene: Paola_42 Start: 34416, Stop: 34802, Start Num: 5

Candidate Starts for Paola_42:

(Start: 5 @34416 has 12 MA's), (Start: 8 @34455 has 10 MA's), (19, 34689), (20, 34707), (21, 34722), (25, 34782),

Gene: Psycho_43 Start: 34516, Stop: 34863, Start Num: 8

Candidate Starts for Psycho_43:

(Start: 8 @34516 has 10 MA's), (15, 34582), (16, 34675), (17, 34732), (18, 34738), (19, 34750), (24, 34831), (25, 34843),

Gene: Rando14_44 Start: 33637, Stop: 33984, Start Num: 8

Candidate Starts for Rando14_44:

(1, 33382), (2, 33388), (3, 33391), (4, 33415), (6, 33616), (Start: 8 @33637 has 10 MA's), (14, 33694), (18, 33859), (19, 33871), (25, 33964),

Gene: SoSeph_42 Start: 34566, Stop: 34952, Start Num: 5

Candidate Starts for SoSeph_42:

(Start: 5 @34566 has 12 MA's), (Start: 8 @34605 has 10 MA's), (19, 34839), (20, 34857), (21, 34872), (25, 34932),

Gene: Strobilo_47 Start: 37197, Stop: 37517, Start Num: 11

Candidate Starts for Strobilo_47:

(Start: 11 @37197 has 2 MA's), (Start: 12 @37200 has 2 MA's), (13, 37209), (16, 37314), (18, 37377), (20, 37407), (25, 37485), (26, 37500), (27, 37506),

Gene: TM4_42 Start: 31544, Stop: 31900, Start Num: 9

Candidate Starts for TM4_42:

(Start: 9 @31544 has 1 MA's), (10, 31547), (Start: 11 @31571 has 2 MA's), (Start: 12 @31574 has 2 MA's), (13, 31583), (16, 31688), (18, 31751), (20, 31781), (23, 31832), (25, 31859), (27, 31889),

Gene: Thyatira_44 Start: 36765, Stop: 37151, Start Num: 5

Candidate Starts for Thyatira_44:

(Start: 5 @36765 has 12 MA's), (Start: 8 @36804 has 10 MA's), (19, 37038), (20, 37056), (21, 37071), (25, 37131),

Gene: Waterfoul_43 Start: 34659, Stop: 35045, Start Num: 5

Candidate Starts for Waterfoul_43:

(Start: 5 @34659 has 12 MA's), (Start: 8 @34698 has 10 MA's), (19, 34932), (20, 34950), (21, 34965), (25, 35025),

Gene: ZoeJ_46 Start: 36666, Stop: 36992, Start Num: 12

Candidate Starts for ZoeJ_46:

(7, 36615), (Start: 11 @36663 has 2 MA's), (Start: 12 @36666 has 2 MA's), (13, 36675), (16, 36780), (18, 36843), (20, 36873), (25, 36951), (27, 36981),