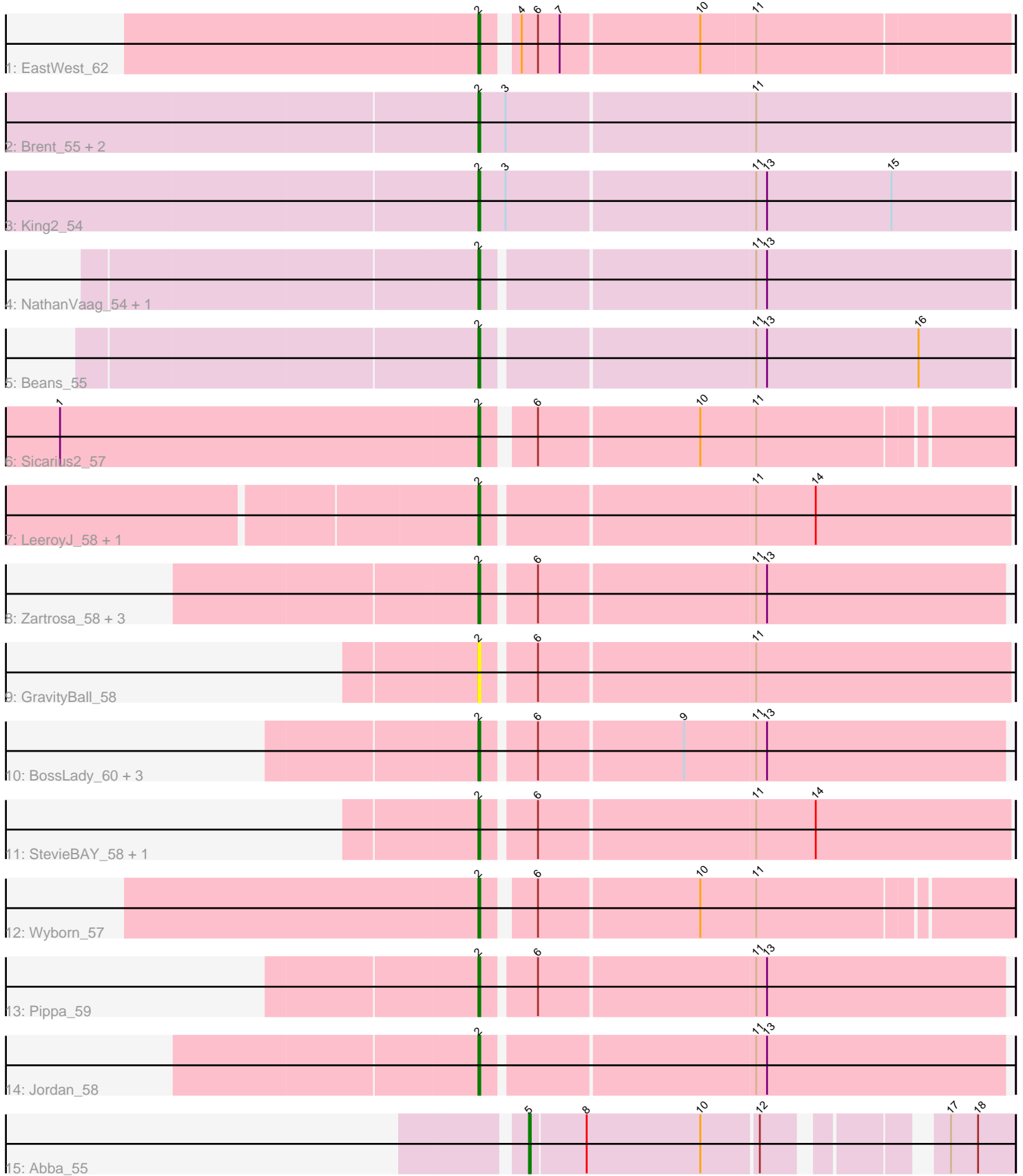


Pham 196772



Note: Tracks are now grouped by subcluster and scaled. Switching in subcluster is indicated by changes in track color. Track scale is now set by default to display the region 30 bp upstream of start 1 to 30 bp downstream of the last possible start. If this default region is judged to be packed too tightly with annotated starts, the track will be further scaled to only show that region of the ORF with annotated starts. This action will be indicated by adding "Zoomed" to the title. For starts, yellow indicates the location of called starts comprised solely of Glimmer/GeneMark auto-annotations, green indicates the location of called starts with at least 1 manual gene annotation.

Pham 196772 Report

This analysis was run 12/09/24 on database version 580.

Pham number 196772 has 26 members, 1 are drafts.

Phages represented in each track:

- Track 1 : EastWest_62
- Track 2 : Brent_55, Jawnski_54, Franzy_55
- Track 3 : King2_54
- Track 4 : NathanVaag_54, Piccoletto_55
- Track 5 : Beans_55
- Track 6 : Sicarius2_57
- Track 7 : LeeroyJ_58, BarretLemon_58
- Track 8 : Zartrosa_58, Shade_58, Sonny_57, JKerns_58
- Track 9 : GravityBall_58
- Track 10 : BossLady_60, Grekaycon_59, TaeYoung_60, Martha_59
- Track 11 : StevieBAY_58, Timinator_58
- Track 12 : Wyborn_57
- Track 13 : Pippa_59
- Track 14 : Jordan_58
- Track 15 : Abba_55

Summary of Final Annotations (See graph section above for start numbers):

The start number called the most often in the published annotations is 2, it was called in 24 of the 25 non-draft genes in the pham.

Genes that call this "Most Annotated" start:

- BarretLemon_58, Beans_55, BossLady_60, Brent_55, EastWest_62, Franzy_55, GravityBall_58, Grekaycon_59, JKerns_58, Jawnski_54, Jordan_58, King2_54, LeeroyJ_58, Martha_59, NathanVaag_54, Piccoletto_55, Pippa_59, Shade_58, Sicarius2_57, Sonny_57, StevieBAY_58, TaeYoung_60, Timinator_58, Wyborn_57, Zartrosa_58,

Genes that have the "Most Annotated" start but do not call it:

-

Genes that do not have the "Most Annotated" start:

- Abba_55,

Summary by start number:

Start 2:

- Found in 25 of 26 (96.2%) of genes in pham
- Manual Annotations of this start: 24 of 25
- Called 100.0% of time when present
- Phage (with cluster) where this start called: BarretLemon_58 (AO2), Beans_55 (AO1), BossLady_60 (AO2), Brent_55 (AO1), EastWest_62 (AO), Franzy_55 (AO1), GravityBall_58 (AO2), Grekaycon_59 (AO2), JKerns_58 (AO2), Jawnski_54 (AO1), Jordan_58 (AO2), King2_54 (AO1), LeeroyJ_58 (AO2), Martha_59 (AO2), NathanVaag_54 (AO1), Piccoletto_55 (AO1), Pippa_59 (AO2), Shade_58 (AO2), Sicarius2_57 (AO2), Sonny_57 (AO2), StevieBAY_58 (AO2), TaeYoung_60 (AO2), Timinator_58 (AO2), Wyborn_57 (AO2), Zartrosa_58 (AO2),

Start 5:

- Found in 1 of 26 (3.8%) of genes in pham
- Manual Annotations of this start: 1 of 25
- Called 100.0% of time when present
- Phage (with cluster) where this start called: Abba_55 (AO3),

Summary by clusters:

There are 4 clusters represented in this pham: AO, AO3, AO2, AO1,

Info for manual annotations of cluster AO:

- Start number 2 was manually annotated 1 time for cluster AO.

Info for manual annotations of cluster AO1:

- Start number 2 was manually annotated 7 times for cluster AO1.

Info for manual annotations of cluster AO2:

- Start number 2 was manually annotated 16 times for cluster AO2.

Info for manual annotations of cluster AO3:

- Start number 5 was manually annotated 1 time for cluster AO3.

Gene Information:

Gene: Abba_55 Start: 37377, Stop: 37613, Start Num: 5

Candidate Starts for Abba_55:

(Start: 5 @37377 has 1 MA's), (8, 37407), (10, 37470), (12, 37500), (17, 37578), (18, 37593),

Gene: BarretLemon_58 Start: 40379, Stop: 40663, Start Num: 2

Candidate Starts for BarretLemon_58:

(Start: 2 @40379 has 24 MA's), (11, 40523), (14, 40556),

Gene: Beans_55 Start: 40120, Stop: 40404, Start Num: 2

Candidate Starts for Beans_55:

(Start: 2 @40120 has 24 MA's), (11, 40264), (13, 40270), (16, 40354),

Gene: BossLady_60 Start: 40759, Stop: 41040, Start Num: 2

Candidate Starts for BossLady_60:

(Start: 2 @40759 has 24 MA's), (6, 40786), (9, 40864), (11, 40903), (13, 40909),

Gene: Brent_55 Start: 40359, Stop: 40649, Start Num: 2

Candidate Starts for Brent_55:

(Start: 2 @40359 has 24 MA's), (3, 40374), (11, 40509),

Gene: EastWest_62 Start: 39551, Stop: 39829, Start Num: 2

Candidate Starts for EastWest_62:

(Start: 2 @39551 has 24 MA's), (4, 39566), (6, 39575), (7, 39587), (10, 39662), (11, 39692),

Gene: Franzy_55 Start: 40375, Stop: 40665, Start Num: 2

Candidate Starts for Franzy_55:

(Start: 2 @40375 has 24 MA's), (3, 40390), (11, 40525),

Gene: GravityBall_58 Start: 40677, Stop: 40961, Start Num: 2

Candidate Starts for GravityBall_58:

(Start: 2 @40677 has 24 MA's), (6, 40704), (11, 40821),

Gene: Grekaycon_59 Start: 40639, Stop: 40920, Start Num: 2

Candidate Starts for Grekaycon_59:

(Start: 2 @40639 has 24 MA's), (6, 40666), (9, 40744), (11, 40783), (13, 40789),

Gene: JKerns_58 Start: 40705, Stop: 40986, Start Num: 2

Candidate Starts for JKerns_58:

(Start: 2 @40705 has 24 MA's), (6, 40732), (11, 40849), (13, 40855),

Gene: Jawnski_54 Start: 39884, Stop: 40174, Start Num: 2

Candidate Starts for Jawnski_54:

(Start: 2 @39884 has 24 MA's), (3, 39899), (11, 40034),

Gene: Jordan_58 Start: 40519, Stop: 40800, Start Num: 2

Candidate Starts for Jordan_58:

(Start: 2 @40519 has 24 MA's), (11, 40663), (13, 40669),

Gene: King2_54 Start: 40236, Stop: 40526, Start Num: 2

Candidate Starts for King2_54:

(Start: 2 @40236 has 24 MA's), (3, 40251), (11, 40386), (13, 40392), (15, 40461),

Gene: LeeroyJ_58 Start: 40408, Stop: 40692, Start Num: 2

Candidate Starts for LeeroyJ_58:

(Start: 2 @40408 has 24 MA's), (11, 40552), (14, 40585),

Gene: Martha_59 Start: 40744, Stop: 41025, Start Num: 2

Candidate Starts for Martha_59:

(Start: 2 @40744 has 24 MA's), (6, 40771), (9, 40849), (11, 40888), (13, 40894),

Gene: NathanVaag_54 Start: 39900, Stop: 40184, Start Num: 2

Candidate Starts for NathanVaag_54:

(Start: 2 @39900 has 24 MA's), (11, 40044), (13, 40050),

Gene: Piccoletto_55 Start: 40093, Stop: 40377, Start Num: 2

Candidate Starts for Piccoletto_55:

(Start: 2 @40093 has 24 MA's), (11, 40237), (13, 40243),

Gene: Pippa_59 Start: 40715, Stop: 40996, Start Num: 2

Candidate Starts for Pippa_59:

(Start: 2 @40715 has 24 MA's), (6, 40742), (11, 40859), (13, 40865),

Gene: Shade_58 Start: 40441, Stop: 40722, Start Num: 2

Candidate Starts for Shade_58:

(Start: 2 @40441 has 24 MA's), (6, 40468), (11, 40585), (13, 40591),

Gene: Sicarius2_57 Start: 38499, Stop: 38774, Start Num: 2

Candidate Starts for Sicarius2_57:

(1, 38268), (Start: 2 @38499 has 24 MA's), (6, 38523), (10, 38610), (11, 38640),

Gene: Sonny_57 Start: 40191, Stop: 40472, Start Num: 2

Candidate Starts for Sonny_57:

(Start: 2 @40191 has 24 MA's), (6, 40218), (11, 40335), (13, 40341),

Gene: StevieBAY_58 Start: 40674, Stop: 40958, Start Num: 2

Candidate Starts for StevieBAY_58:

(Start: 2 @40674 has 24 MA's), (6, 40701), (11, 40818), (14, 40851),

Gene: TaeYoung_60 Start: 40717, Stop: 40998, Start Num: 2

Candidate Starts for TaeYoung_60:

(Start: 2 @40717 has 24 MA's), (6, 40744), (9, 40822), (11, 40861), (13, 40867),

Gene: Timinator_58 Start: 40523, Stop: 40807, Start Num: 2

Candidate Starts for Timinator_58:

(Start: 2 @40523 has 24 MA's), (6, 40550), (11, 40667), (14, 40700),

Gene: Wyborn_57 Start: 39509, Stop: 39784, Start Num: 2

Candidate Starts for Wyborn_57:

(Start: 2 @39509 has 24 MA's), (6, 39533), (10, 39620), (11, 39650),

Gene: Zartrosa_58 Start: 40489, Stop: 40770, Start Num: 2

Candidate Starts for Zartrosa_58:

(Start: 2 @40489 has 24 MA's), (6, 40516), (11, 40633), (13, 40639),