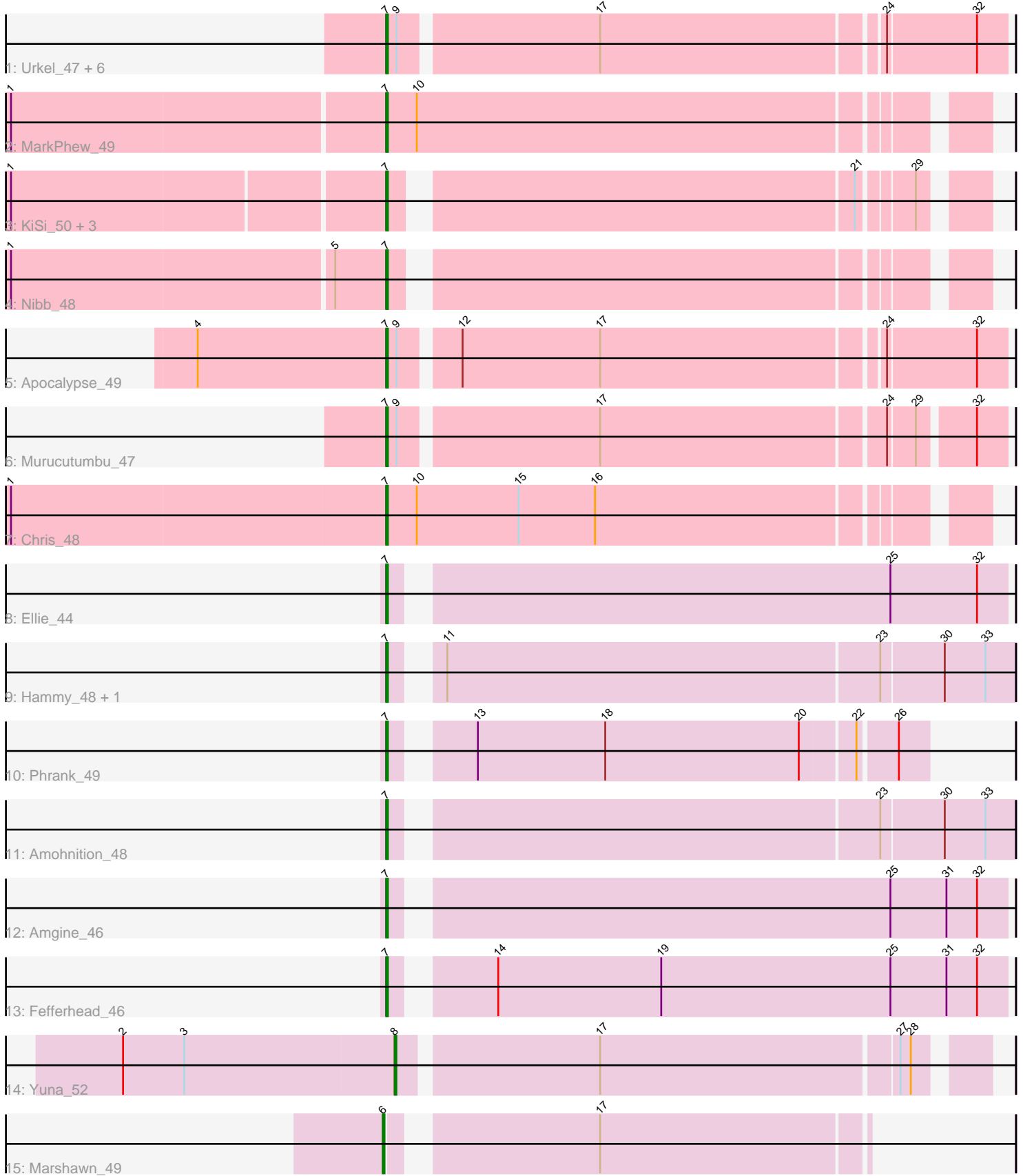


Pham 196778



Note: Tracks are now grouped by subcluster and scaled. Switching in subcluster is indicated by changes in track color. Track scale is now set by default to display the region 30 bp upstream of start 1 to 30 bp downstream of the last possible start. If this default region is judged to be packed too tightly with annotated starts, the track will be further scaled to only show that region of the ORF with annotated starts. This action will be indicated by adding "Zoomed" to the title. For starts, yellow indicates the location of called starts comprised solely of Glimmer/GeneMark auto-annotations, green indicates the location of called starts with at least 1 manual gene annotation.

## Pham 196778 Report

This analysis was run 12/09/24 on database version 580.

Pham number 196778 has 25 members, 0 are drafts.

Phages represented in each track:

- Track 1 : Urkel\_47, LaterM\_47, Stinson\_47, SamuelLPlaqson\_47, Ageofdapage\_48, TiniBug\_47, DrHayes\_47
- Track 2 : MarkPhew\_49
- Track 3 : KiSi\_50, LeMond\_50, Oscar\_50, Scarlett\_50
- Track 4 : Nibb\_48
- Track 5 : Apocalypse\_49
- Track 6 : Murucutumbu\_47
- Track 7 : Chris\_48
- Track 8 : Ellie\_44
- Track 9 : Hammy\_48, DARTH\_P\_48
- Track 10 : Phrank\_49
- Track 11 : Amohnition\_48
- Track 12 : Amgine\_46
- Track 13 : Fefferhead\_46
- Track 14 : Yuna\_52
- Track 15 : Marshawn\_49

### ***Summary of Final Annotations (See graph section above for start numbers):***

The start number called the most often in the published annotations is 7, it was called in 23 of the 25 non-draft genes in the pham.

Genes that call this "Most Annotated" start:

- Ageofdapage\_48, Amgine\_46, Amohnition\_48, Apocalypse\_49, Chris\_48, DARTH\_P\_48, DrHayes\_47, Ellie\_44, Fefferhead\_46, Hammy\_48, KiSi\_50, LaterM\_47, LeMond\_50, MarkPhew\_49, Murucutumbu\_47, Nibb\_48, Oscar\_50, Phrank\_49, SamuelLPlaqson\_47, Scarlett\_50, Stinson\_47, TiniBug\_47, Urkel\_47,

Genes that have the "Most Annotated" start but do not call it:

- 

Genes that do not have the "Most Annotated" start:

- Marshawn\_49, Yuna\_52,

## Summary by start number:

### Start 6:

- Found in 1 of 25 ( 4.0% ) of genes in pham
- Manual Annotations of this start: 1 of 25
- Called 100.0% of time when present
- Phage (with cluster) where this start called: Marshawn\_49 (K6),

### Start 7:

- Found in 23 of 25 ( 92.0% ) of genes in pham
- Manual Annotations of this start: 23 of 25
- Called 100.0% of time when present
- Phage (with cluster) where this start called: Ageofdapage\_48 (K1), Amgine\_46 (K6), Amohnition\_48 (K6), Apocalypse\_49 (K1), Chris\_48 (K1), DarthP\_48 (K6), DrHayes\_47 (K1), Ellie\_44 (K6), Fefferhead\_46 (K6), Hammy\_48 (K6), KiSi\_50 (K1), LaterM\_47 (K1), LeMond\_50 (K1), MarkPheW\_49 (K1), Murucutumbu\_47 (K1), Nibb\_48 (K1), Oscar\_50 (K1), Phrank\_49 (K6), SamuelLPlaQson\_47 (K1), Scarlett\_50 (K1), Stinson\_47 (K1), TiniBug\_47 (K1), Urkel\_47 (K1),

### Start 8:

- Found in 1 of 25 ( 4.0% ) of genes in pham
- Manual Annotations of this start: 1 of 25
- Called 100.0% of time when present
- Phage (with cluster) where this start called: Yuna\_52 (K6),

## Summary by clusters:

There are 2 clusters represented in this pham: K1, K6,

Info for manual annotations of cluster K1:

- Start number 7 was manually annotated 16 times for cluster K1.

Info for manual annotations of cluster K6:

- Start number 6 was manually annotated 1 time for cluster K6.
- Start number 7 was manually annotated 7 times for cluster K6.
- Start number 8 was manually annotated 1 time for cluster K6.

## Gene Information:

Gene: Ageofdapage\_48 Start: 36661, Stop: 37002, Start Num: 7

Candidate Starts for Ageofdapage\_48:

(Start: 7 @36661 has 23 MA's), (9, 36667), (17, 36778), (24, 36940), (32, 36985),

Gene: Amgine\_46 Start: 36691, Stop: 37038, Start Num: 7

Candidate Starts for Amgine\_46:

(Start: 7 @36691 has 23 MA's), (25, 36970), (31, 37003), (32, 37021),

Gene: Amohnition\_48 Start: 36704, Stop: 37051, Start Num: 7

Candidate Starts for Amohnition\_48:

(Start: 7 @36704 has 23 MA's), (23, 36974), (30, 37010), (33, 37034),

Gene: Apocalypse\_49 Start: 36678, Stop: 37022, Start Num: 7  
Candidate Starts for Apocalypse\_49:  
(4, 36567), (Start: 7 @36678 has 23 MA's), (9, 36684), (12, 36714), (17, 36795), (24, 36954), (32, 37005),

Gene: Chris\_48 Start: 36479, Stop: 36811, Start Num: 7  
Candidate Starts for Chris\_48:  
(1, 36260), (Start: 7 @36479 has 23 MA's), (10, 36497), (15, 36557), (16, 36602),

Gene: DarthP\_48 Start: 36588, Stop: 36935, Start Num: 7  
Candidate Starts for DarthP\_48:  
(Start: 7 @36588 has 23 MA's), (11, 36606), (23, 36858), (30, 36894), (33, 36918),

Gene: DrHayes\_47 Start: 36560, Stop: 36904, Start Num: 7  
Candidate Starts for DrHayes\_47:  
(Start: 7 @36560 has 23 MA's), (9, 36566), (17, 36677), (24, 36836), (32, 36887),

Gene: Ellie\_44 Start: 35879, Stop: 36226, Start Num: 7  
Candidate Starts for Ellie\_44:  
(Start: 7 @35879 has 23 MA's), (25, 36158), (32, 36209),

Gene: Fefferhead\_46 Start: 35830, Stop: 36177, Start Num: 7  
Candidate Starts for Fefferhead\_46:  
(Start: 7 @35830 has 23 MA's), (14, 35878), (19, 35974), (25, 36109), (31, 36142), (32, 36160),

Gene: Hammy\_48 Start: 36576, Stop: 36923, Start Num: 7  
Candidate Starts for Hammy\_48:  
(Start: 7 @36576 has 23 MA's), (11, 36594), (23, 36846), (30, 36882), (33, 36906),

Gene: KiSi\_50 Start: 36878, Stop: 37192, Start Num: 7  
Candidate Starts for KiSi\_50:  
(1, 36665), (Start: 7 @36878 has 23 MA's), (21, 37133), (29, 37160),

Gene: LaterM\_47 Start: 36558, Stop: 36899, Start Num: 7  
Candidate Starts for LaterM\_47:  
(Start: 7 @36558 has 23 MA's), (9, 36564), (17, 36675), (24, 36837), (32, 36882),

Gene: LeMond\_50 Start: 36862, Stop: 37176, Start Num: 7  
Candidate Starts for LeMond\_50:  
(1, 36649), (Start: 7 @36862 has 23 MA's), (21, 37117), (29, 37144),

Gene: MarkPhew\_49 Start: 36307, Stop: 36639, Start Num: 7  
Candidate Starts for MarkPhew\_49:  
(1, 36091), (Start: 7 @36307 has 23 MA's), (10, 36325),

Gene: Marshawn\_49 Start: 36704, Stop: 36964, Start Num: 6  
Candidate Starts for Marshawn\_49:  
(Start: 6 @36704 has 1 MA's), (17, 36812),

Gene: Murucutumbu\_47 Start: 36651, Stop: 36992, Start Num: 7  
Candidate Starts for Murucutumbu\_47:  
(Start: 7 @36651 has 23 MA's), (9, 36657), (17, 36768), (24, 36930), (29, 36945), (32, 36975),

Gene: Nibb\_48 Start: 36019, Stop: 36333, Start Num: 7

Candidate Starts for Nibb\_48:

(1, 35803), (5, 35989), (Start: 7 @36019 has 23 MA's),

Gene: Oscar\_50 Start: 36764, Stop: 37078, Start Num: 7

Candidate Starts for Oscar\_50:

(1, 36551), (Start: 7 @36764 has 23 MA's), (21, 37019), (29, 37046),

Gene: Phrank\_49 Start: 35543, Stop: 35836, Start Num: 7

Candidate Starts for Phrank\_49:

(Start: 7 @35543 has 23 MA's), (13, 35579), (18, 35654), (20, 35768), (22, 35798), (26, 35819),

Gene: SamuelLPlaqson\_47 Start: 36560, Stop: 36904, Start Num: 7

Candidate Starts for SamuelLPlaqson\_47:

(Start: 7 @36560 has 23 MA's), (9, 36566), (17, 36677), (24, 36836), (32, 36887),

Gene: Scarlett\_50 Start: 36756, Stop: 37070, Start Num: 7

Candidate Starts for Scarlett\_50:

(1, 36543), (Start: 7 @36756 has 23 MA's), (21, 37011), (29, 37038),

Gene: Stinson\_47 Start: 36171, Stop: 36512, Start Num: 7

Candidate Starts for Stinson\_47:

(Start: 7 @36171 has 23 MA's), (9, 36177), (17, 36288), (24, 36450), (32, 36495),

Gene: TiniBug\_47 Start: 36556, Stop: 36900, Start Num: 7

Candidate Starts for TiniBug\_47:

(Start: 7 @36556 has 23 MA's), (9, 36562), (17, 36673), (24, 36832), (32, 36883),

Gene: Urkel\_47 Start: 36560, Stop: 36904, Start Num: 7

Candidate Starts for Urkel\_47:

(Start: 7 @36560 has 23 MA's), (9, 36566), (17, 36677), (24, 36836), (32, 36887),

Gene: Yuna\_52 Start: 37415, Stop: 37738, Start Num: 8

Candidate Starts for Yuna\_52:

(2, 37256), (3, 37292), (Start: 8 @37415 has 1 MA's), (17, 37526), (27, 37697), (28, 37703),