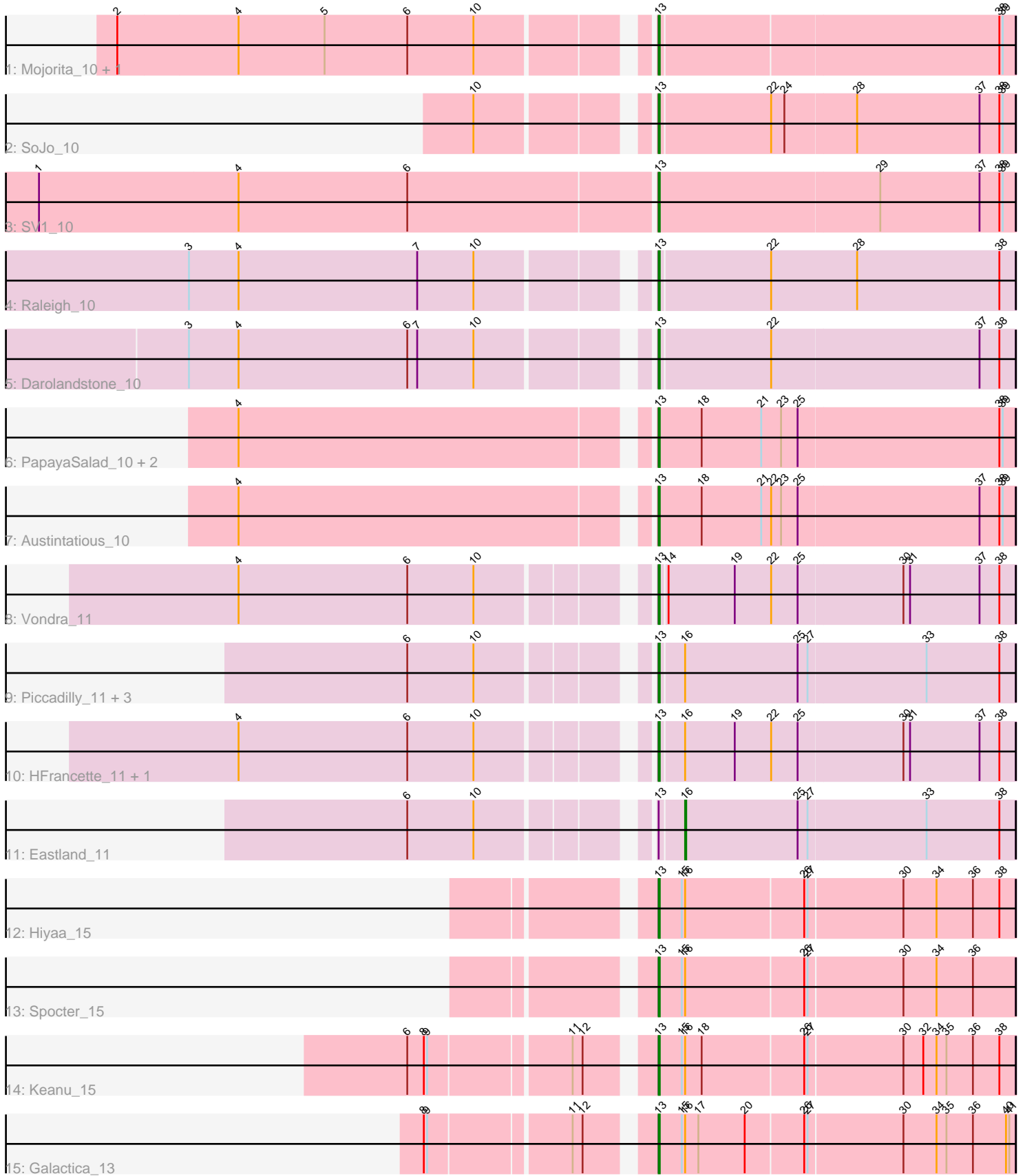


Pham 196795



Note: Tracks are now grouped by subcluster and scaled. Switching in subcluster is indicated by changes in track color. Track scale is now set by default to display the region 30 bp upstream of start 1 to 30 bp downstream of the last possible start. If this default region is judged to be packed too tightly with annotated starts, the track will be further scaled to only show that region of the ORF with annotated starts. This action will be indicated by adding "Zoomed" to the title. For starts, yellow indicates the location of called starts comprised solely of Glimmer/GeneMark auto-annotations, green indicates the location of called starts with at least 1 manual gene annotation.

Pham 196795 Report

This analysis was run 12/09/24 on database version 580.

WARNING: Pham size does not match number of genes in report. Either unphamerated genes have been added (by you) or starterator has removed genes due to invalid start codon.

Pham number 196795 has 22 members, 0 are drafts.

Phages represented in each track:

- Track 1 : Mojorita_10, Picard_10
- Track 2 : SoJo_10
- Track 3 : SV1_10
- Track 4 : Raleigh_10
- Track 5 : Darolandstone_10
- Track 6 : PapayaSalad_10, Bioscum_10, Ididsumtinwong_10
- Track 7 : Austintatious_10
- Track 8 : Vondra_11
- Track 9 : Piccadilly_11, Eklok_11, Cumberbatch_11, AxeJC_11
- Track 10 : HFrancette_11, Ignacio_11
- Track 11 : Eastland_11
- Track 12 : Hiyaa_15
- Track 13 : Spocter_15
- Track 14 : Keanu_15
- Track 15 : Galactica_13

Summary of Final Annotations (See graph section above for start numbers):

The start number called the most often in the published annotations is 13, it was called in 21 of the 22 non-draft genes in the pham.

Genes that call this "Most Annotated" start:

- Austintatious_10, AxeJC_11, Bioscum_10, Cumberbatch_11, Darolandstone_10, Eklok_11, Galactica_13, HFrancette_11, Hiyaa_15, Ididsumtinwong_10, Ignacio_11, Keanu_15, Mojorita_10, PapayaSalad_10, Picard_10, Piccadilly_11, Raleigh_10, SV1_10, SoJo_10, Spocter_15, Vondra_11,

Genes that have the "Most Annotated" start but do not call it:

- Eastland_11,

Genes that do not have the "Most Annotated" start:

-

Summary by start number:

Start 13:

- Found in 22 of 22 (100.0%) of genes in pham
- Manual Annotations of this start: 21 of 22
- Called 95.5% of time when present
- Phage (with cluster) where this start called: Austintatious_10 (BC3), AxeJC_11 (BP), Bioscum_10 (BC3), Cumberbatch_11 (BP), Darolandstone_10 (BC2), Eklok_11 (BP), Galactica_13 (BQ), HFrancette_11 (BP), Hiyaa_15 (BQ), Ididsumtinwong_10 (BC3), Ignacio_11 (BP), Keanu_15 (BQ), Mojerita_10 (BC1), PapayaSalad_10 (BC3), Picard_10 (BC1), Piccadilly_11 (BP), Raleigh_10 (BC2), SV1_10 (BC1), SoJo_10 (BC1), Spocter_15 (BQ), Vondra_11 (BP),

Start 16:

- Found in 11 of 22 (50.0%) of genes in pham
- Manual Annotations of this start: 1 of 22
- Called 9.1% of time when present
- Phage (with cluster) where this start called: Eastland_11 (BP),

Summary by clusters:

There are 5 clusters represented in this pham: BP, BC1, BQ, BC2, BC3,

Info for manual annotations of cluster BC1:

- Start number 13 was manually annotated 4 times for cluster BC1.

Info for manual annotations of cluster BC2:

- Start number 13 was manually annotated 2 times for cluster BC2.

Info for manual annotations of cluster BC3:

- Start number 13 was manually annotated 4 times for cluster BC3.

Info for manual annotations of cluster BP:

- Start number 13 was manually annotated 7 times for cluster BP.
- Start number 16 was manually annotated 1 time for cluster BP.

Info for manual annotations of cluster BQ:

- Start number 13 was manually annotated 4 times for cluster BQ.

Gene Information:

Gene: Austintatious_10 Start: 7516, Stop: 7836, Start Num: 13

Candidate Starts for Austintatious_10:

(4, 7162), (Start: 13 @7516 has 21 MA's), (18, 7555), (21, 7609), (22, 7618), (23, 7627), (25, 7642), (37, 7804), (38, 7822), (39, 7825),

Gene: AxeJC_11 Start: 7664, Stop: 7981, Start Num: 13

Candidate Starts for AxeJC_11:

(6, 7472), (10, 7532), (Start: 13 @7664 has 21 MA's), (Start: 16 @7685 has 1 MA's), (25, 7787), (27, 7796), (33, 7901), (38, 7967),

Gene: Bioscum_10 Start: 7552, Stop: 7872, Start Num: 13

Candidate Starts for Bioscum_10:

(4, 7198), (Start: 13 @7552 has 21 MA's), (18, 7591), (21, 7645), (23, 7663), (25, 7678), (38, 7858), (39, 7861),

Gene: Cumberbatch_11 Start: 7651, Stop: 7968, Start Num: 13

Candidate Starts for Cumberbatch_11:

(6, 7459), (10, 7519), (Start: 13 @7651 has 21 MA's), (Start: 16 @7672 has 1 MA's), (25, 7774), (27, 7783), (33, 7888), (38, 7954),

Gene: Darolandstone_10 Start: 7986, Stop: 8303, Start Num: 13

Candidate Starts for Darolandstone_10:

(3, 7593), (4, 7638), (6, 7791), (7, 7800), (10, 7851), (Start: 13 @7986 has 21 MA's), (22, 8085), (37, 8271), (38, 8289),

Gene: Eastland_11 Start: 7673, Stop: 7969, Start Num: 16

Candidate Starts for Eastland_11:

(6, 7460), (10, 7520), (Start: 13 @7652 has 21 MA's), (Start: 16 @7673 has 1 MA's), (25, 7775), (27, 7784), (33, 7889), (38, 7955),

Gene: Eklok_11 Start: 7664, Stop: 7981, Start Num: 13

Candidate Starts for Eklok_11:

(6, 7472), (10, 7532), (Start: 13 @7664 has 21 MA's), (Start: 16 @7685 has 1 MA's), (25, 7787), (27, 7796), (33, 7901), (38, 7967),

Gene: Galactica_13 Start: 12489, Stop: 12806, Start Num: 13

Candidate Starts for Galactica_13:

(8, 12306), (9, 12309), (11, 12429), (12, 12438), (Start: 13 @12489 has 21 MA's), (15, 12510), (Start: 16 @12513 has 1 MA's), (17, 12525), (20, 12567), (26, 12618), (27, 12621), (30, 12705), (34, 12735), (35, 12744), (36, 12768), (40, 12798), (41, 12801),

Gene: HFrancette_11 Start: 7660, Stop: 7977, Start Num: 13

Candidate Starts for HFrancette_11:

(4, 7315), (6, 7468), (10, 7528), (Start: 13 @7660 has 21 MA's), (Start: 16 @7681 has 1 MA's), (19, 7726), (22, 7759), (25, 7783), (30, 7876), (31, 7882), (37, 7945), (38, 7963),

Gene: Hiyaa_15 Start: 13527, Stop: 13844, Start Num: 13

Candidate Starts for Hiyaa_15:

(Start: 13 @13527 has 21 MA's), (15, 13548), (Start: 16 @13551 has 1 MA's), (26, 13656), (27, 13659), (30, 13743), (34, 13773), (36, 13806), (38, 13830),

Gene: Ididsumtinwong_10 Start: 7552, Stop: 7872, Start Num: 13

Candidate Starts for Ididsumtinwong_10:

(4, 7198), (Start: 13 @7552 has 21 MA's), (18, 7591), (21, 7645), (23, 7663), (25, 7678), (38, 7858), (39, 7861),

Gene: Ignacio_11 Start: 7660, Stop: 7977, Start Num: 13

Candidate Starts for Ignacio_11:

(4, 7315), (6, 7468), (10, 7528), (Start: 13 @7660 has 21 MA's), (Start: 16 @7681 has 1 MA's), (19, 7726), (22, 7759), (25, 7783), (30, 7876), (31, 7882), (37, 7945), (38, 7963),

Gene: Keanu_15 Start: 13576, Stop: 13893, Start Num: 13

Candidate Starts for Keanu_15:

(6, 13378), (8, 13393), (9, 13396), (11, 13516), (12, 13525), (Start: 13 @13576 has 21 MA's), (15, 13597), (Start: 16 @13600 has 1 MA's), (18, 13615), (26, 13705), (27, 13708), (30, 13792), (32, 13810), (34, 13822), (35, 13831), (36, 13855), (38, 13879),

Gene: Mojorita_10 Start: 7832, Stop: 8146, Start Num: 13

Candidate Starts for Mojorita_10:

(2, 7376), (4, 7484), (5, 7562), (6, 7637), (10, 7697), (Start: 13 @7832 has 21 MA's), (38, 8132), (39, 8135),

Gene: PapayaSalad_10 Start: 7524, Stop: 7844, Start Num: 13

Candidate Starts for PapayaSalad_10:

(4, 7170), (Start: 13 @7524 has 21 MA's), (18, 7563), (21, 7617), (23, 7635), (25, 7650), (38, 7830), (39, 7833),

Gene: Picard_10 Start: 7832, Stop: 8146, Start Num: 13

Candidate Starts for Picard_10:

(2, 7376), (4, 7484), (5, 7562), (6, 7637), (10, 7697), (Start: 13 @7832 has 21 MA's), (38, 8132), (39, 8135),

Gene: Piccadilly_11 Start: 7651, Stop: 7968, Start Num: 13

Candidate Starts for Piccadilly_11:

(6, 7459), (10, 7519), (Start: 13 @7651 has 21 MA's), (Start: 16 @7672 has 1 MA's), (25, 7774), (27, 7783), (33, 7888), (38, 7954),

Gene: Raleigh_10 Start: 7951, Stop: 8271, Start Num: 13

Candidate Starts for Raleigh_10:

(3, 7558), (4, 7603), (7, 7765), (10, 7816), (Start: 13 @7951 has 21 MA's), (22, 8050), (28, 8128), (38, 8257),

Gene: SV1_10 Start: 7724, Stop: 8044, Start Num: 13

Candidate Starts for SV1_10:

(1, 7172), (4, 7352), (6, 7505), (Start: 13 @7724 has 21 MA's), (29, 7922), (37, 8012), (38, 8030), (39, 8033),

Gene: SoJo_10 Start: 7746, Stop: 8063, Start Num: 13

Candidate Starts for SoJo_10:

(10, 7611), (Start: 13 @7746 has 21 MA's), (22, 7845), (24, 7857), (28, 7920), (37, 8031), (38, 8049), (39, 8052),

Gene: Spocter_15 Start: 13515, Stop: 13832, Start Num: 13

Candidate Starts for Spocter_15:

(Start: 13 @13515 has 21 MA's), (15, 13536), (Start: 16 @13539 has 1 MA's), (26, 13644), (27, 13647), (30, 13731), (34, 13761), (36, 13794),

Gene: Vondra_11 Start: 7660, Stop: 7977, Start Num: 13

Candidate Starts for Vondra_11:

(4, 7315), (6, 7468), (10, 7528), (Start: 13 @7660 has 21 MA's), (14, 7666), (19, 7726), (22, 7759), (25, 7783), (30, 7876), (31, 7882), (37, 7945), (38, 7963),