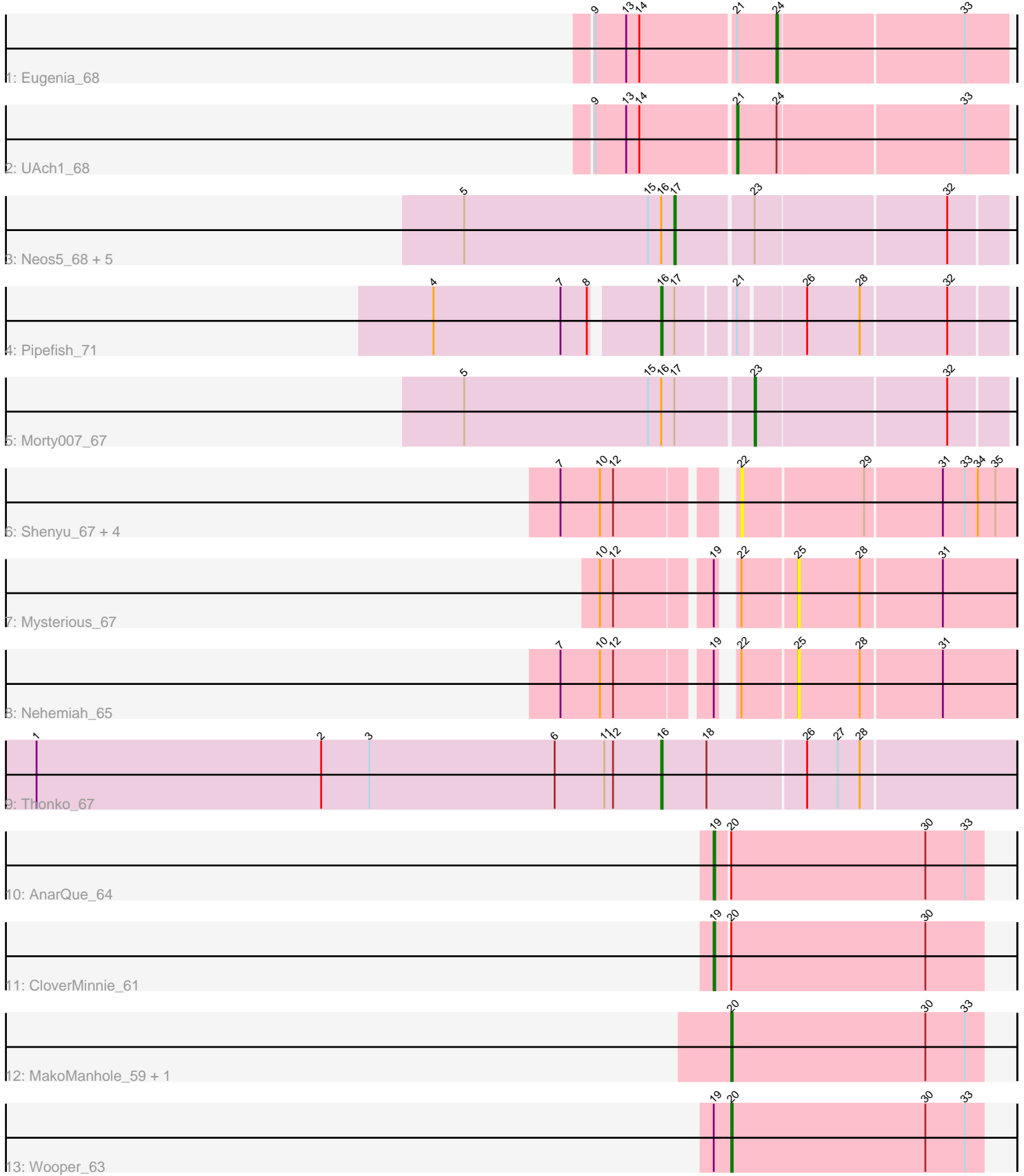


Pham 196797



Note: Tracks are now grouped by subcluster and scaled. Switching in subcluster is indicated by changes in track color. Track scale is now set by default to display the region 30 bp upstream of start 1 to 30 bp downstream of the last possible start. If this default region is judged to be packed too tightly with annotated starts, the track will be further scaled to only show that region of the ORF with annotated starts. This action will be indicated by adding "Zoomed" to the title. For starts, yellow indicates the location of called starts comprised solely of Glimmer/GeneMark auto-annotations, green indicates the location of called starts with at least 1 manual gene annotation.

Pham 196797 Report

This analysis was run 12/09/24 on database version 580.

Pham number 196797 has 23 members, 8 are drafts.

Phages represented in each track:

- Track 1 : Eugenia_68
- Track 2 : UAch1_68
- Track 3 : Neos5_68, SlippinJimmy_71, Briakila_68, Marley1013_69, Obutu_70, Phayeta_71
- Track 4 : Pipefish_71
- Track 5 : Morty007_67
- Track 6 : Shenyu_67, StinkyVeggy_66, Nangang_66, DigitDog_67, KarasumaRum_66
- Track 7 : Mysterious_67
- Track 8 : Nehemiah_65
- Track 9 : Thonko_67
- Track 10 : AnarQue_64
- Track 11 : CloverMinnie_61
- Track 12 : MakoManhole_59, CaiB_62
- Track 13 : Wooper_63

Summary of Final Annotations (See graph section above for start numbers):

The start number called the most often in the published annotations is 17, it was called in 5 of the 15 non-draft genes in the pham.

Genes that call this "Most Annotated" start:

- Briakila_68, Marley1013_69, Neos5_68, Obutu_70, Phayeta_71, SlippinJimmy_71,

Genes that have the "Most Annotated" start but do not call it:

- Morty007_67, Pipefish_71,

Genes that do not have the "Most Annotated" start:

- AnarQue_64, CaiB_62, CloverMinnie_61, DigitDog_67, Eugenia_68, KarasumaRum_66, MakoManhole_59, Mysterious_67, Nangang_66, Nehemiah_65, Shenyu_67, StinkyVeggy_66, Thonko_67, UAch1_68, Wooper_63,

Summary by start number:

Start 16:

- Found in 9 of 23 (39.1%) of genes in pham
- Manual Annotations of this start: 2 of 15
- Called 22.2% of time when present
- Phage (with cluster) where this start called: Pipefish_71 (B3), Thonko_67 (B8),

Start 17:

- Found in 8 of 23 (34.8%) of genes in pham
- Manual Annotations of this start: 5 of 15
- Called 75.0% of time when present
- Phage (with cluster) where this start called: Briakila_68 (B3), Marley1013_69 (B3), Neos5_68 (B3), Obutu_70 (B3), Phayeta_71 (B3), SlippinJimmy_71 (B3),

Start 19:

- Found in 5 of 23 (21.7%) of genes in pham
- Manual Annotations of this start: 2 of 15
- Called 40.0% of time when present
- Phage (with cluster) where this start called: AnarQue_64 (DR), CloverMinnie_61 (DR),

Start 20:

- Found in 5 of 23 (21.7%) of genes in pham
- Manual Annotations of this start: 3 of 15
- Called 60.0% of time when present
- Phage (with cluster) where this start called: CaiB_62 (DR), MakoManhole_59 (DR), Wooper_63 (DR),

Start 21:

- Found in 3 of 23 (13.0%) of genes in pham
- Manual Annotations of this start: 1 of 15
- Called 33.3% of time when present
- Phage (with cluster) where this start called: UAch1_68 (B1),

Start 22:

- Found in 7 of 23 (30.4%) of genes in pham
- No Manual Annotations of this start.
- Called 71.4% of time when present
- Phage (with cluster) where this start called: DigitDog_67 (B5), KarasumaRum_66 (B5), Nangang_66 (B5), Shenyu_67 (B5), StinkyVeggy_66 (B5),

Start 23:

- Found in 7 of 23 (30.4%) of genes in pham
- Manual Annotations of this start: 1 of 15
- Called 14.3% of time when present
- Phage (with cluster) where this start called: Morty007_67 (B3),

Start 24:

- Found in 2 of 23 (8.7%) of genes in pham
- Manual Annotations of this start: 1 of 15
- Called 50.0% of time when present
- Phage (with cluster) where this start called: Eugenia_68 (B1),

Start 25:

- Found in 2 of 23 (8.7%) of genes in pham
- No Manual Annotations of this start.
- Called 100.0% of time when present
- Phage (with cluster) where this start called: Mysterious_67 (B5), Nehemiah_65 (B5),

Summary by clusters:

There are 5 clusters represented in this pham: B5, DR, B1, B8, B3,

Info for manual annotations of cluster B1:

- Start number 21 was manually annotated 1 time for cluster B1.
- Start number 24 was manually annotated 1 time for cluster B1.

Info for manual annotations of cluster B3:

- Start number 16 was manually annotated 1 time for cluster B3.
- Start number 17 was manually annotated 5 times for cluster B3.
- Start number 23 was manually annotated 1 time for cluster B3.

Info for manual annotations of cluster B8:

- Start number 16 was manually annotated 1 time for cluster B8.

Info for manual annotations of cluster DR:

- Start number 19 was manually annotated 2 times for cluster DR.
- Start number 20 was manually annotated 3 times for cluster DR.

Gene Information:

Gene: AnarQue_64 Start: 52219, Stop: 52398, Start Num: 19

Candidate Starts for AnarQue_64:

(Start: 19 @52219 has 2 MA's), (Start: 20 @52228 has 3 MA's), (30, 52360), (33, 52387),

Gene: Briakila_68 Start: 57517, Stop: 57732, Start Num: 17

Candidate Starts for Briakila_68:

(5, 57373), (15, 57499), (Start: 16 @57508 has 2 MA's), (Start: 17 @57517 has 5 MA's), (Start: 23 @57568 has 1 MA's), (32, 57694),

Gene: CaiB_62 Start: 52012, Stop: 52182, Start Num: 20

Candidate Starts for CaiB_62:

(Start: 20 @52012 has 3 MA's), (30, 52144), (33, 52171),

Gene: CloverMinnie_61 Start: 51166, Stop: 51345, Start Num: 19

Candidate Starts for CloverMinnie_61:

(Start: 19 @51166 has 2 MA's), (Start: 20 @51175 has 3 MA's), (30, 51307),

Gene: DigitDog_67 Start: 58467, Stop: 58649, Start Num: 22

Candidate Starts for DigitDog_67:

(7, 58365), (10, 58392), (12, 58401), (22, 58467), (29, 58548), (31, 58599), (33, 58614), (34, 58623), (35, 58635),

Gene: Eugenia_68 Start: 57577, Stop: 57729, Start Num: 24

Candidate Starts for Eugenia_68:

(9, 57457), (13, 57478), (14, 57487), (Start: 21 @57550 has 1 MA's), (Start: 24 @57577 has 1 MA's), (33, 57700),

Gene: KarasumaRum_66 Start: 58294, Stop: 58476, Start Num: 22

Candidate Starts for KarasumaRum_66:

(7, 58192), (10, 58219), (12, 58228), (22, 58294), (29, 58375), (31, 58426), (33, 58441), (34, 58450), (35, 58462),

Gene: MakoManhole_59 Start: 50530, Stop: 50700, Start Num: 20

Candidate Starts for MakoManhole_59:

(Start: 20 @50530 has 3 MA's), (30, 50662), (33, 50689),

Gene: Marley1013_69 Start: 58226, Stop: 58441, Start Num: 17

Candidate Starts for Marley1013_69:

(5, 58082), (15, 58208), (Start: 16 @58217 has 2 MA's), (Start: 17 @58226 has 5 MA's), (Start: 23 @58277 has 1 MA's), (32, 58403),

Gene: Morty007_67 Start: 58277, Stop: 58441, Start Num: 23

Candidate Starts for Morty007_67:

(5, 58082), (15, 58208), (Start: 16 @58217 has 2 MA's), (Start: 17 @58226 has 5 MA's), (Start: 23 @58277 has 1 MA's), (32, 58403),

Gene: Mysterious_67 Start: 58447, Stop: 58593, Start Num: 25

Candidate Starts for Mysterious_67:

(10, 58336), (12, 58345), (Start: 19 @58405 has 2 MA's), (22, 58411), (25, 58447), (28, 58489), (31, 58543),

Gene: Nangang_66 Start: 58493, Stop: 58675, Start Num: 22

Candidate Starts for Nangang_66:

(7, 58391), (10, 58418), (12, 58427), (22, 58493), (29, 58574), (31, 58625), (33, 58640), (34, 58649), (35, 58661),

Gene: Nehemiah_65 Start: 58285, Stop: 58431, Start Num: 25

Candidate Starts for Nehemiah_65:

(7, 58147), (10, 58174), (12, 58183), (Start: 19 @58243 has 2 MA's), (22, 58249), (25, 58285), (28, 58327), (31, 58381),

Gene: Neos5_68 Start: 57688, Stop: 57903, Start Num: 17

Candidate Starts for Neos5_68:

(5, 57544), (15, 57670), (Start: 16 @57679 has 2 MA's), (Start: 17 @57688 has 5 MA's), (Start: 23 @57739 has 1 MA's), (32, 57865),

Gene: Obutu_70 Start: 57908, Stop: 58123, Start Num: 17

Candidate Starts for Obutu_70:

(5, 57764), (15, 57890), (Start: 16 @57899 has 2 MA's), (Start: 17 @57908 has 5 MA's), (Start: 23 @57959 has 1 MA's), (32, 58085),

Gene: Phayeta_71 Start: 57812, Stop: 58027, Start Num: 17

Candidate Starts for Phayeta_71:

(5, 57668), (15, 57794), (Start: 16 @57803 has 2 MA's), (Start: 17 @57812 has 5 MA's), (Start: 23 @57863 has 1 MA's), (32, 57989),

Gene: Pipefish_71 Start: 58442, Stop: 58660, Start Num: 16

Candidate Starts for Pipefish_71:

(4, 58295), (7, 58382), (8, 58400), (Start: 16 @58442 has 2 MA's), (Start: 17 @58451 has 5 MA's), (Start: 21 @58487 has 1 MA's), (26, 58529), (28, 58565), (32, 58622),

Gene: Shenyu_67 Start: 58862, Stop: 59044, Start Num: 22

Candidate Starts for Shenyu_67:

(7, 58760), (10, 58787), (12, 58796), (22, 58862), (29, 58943), (31, 58994), (33, 59009), (34, 59018), (35, 59030),

Gene: SlippinJimmy_71 Start: 58709, Stop: 58924, Start Num: 17

Candidate Starts for SlippinJimmy_71:

(5, 58565), (15, 58691), (Start: 16 @58700 has 2 MA's), (Start: 17 @58709 has 5 MA's), (Start: 23 @58760 has 1 MA's), (32, 58886),

Gene: StinkyVeggy_66 Start: 58294, Stop: 58476, Start Num: 22

Candidate Starts for StinkyVeggy_66:

(7, 58192), (10, 58219), (12, 58228), (22, 58294), (29, 58375), (31, 58426), (33, 58441), (34, 58450), (35, 58462),

Gene: Thonko_67 Start: 56230, Stop: 56466, Start Num: 16

Candidate Starts for Thonko_67:

(1, 55804), (2, 55999), (3, 56032), (6, 56158), (11, 56191), (12, 56197), (Start: 16 @56230 has 2 MA's), (18, 56260), (26, 56326), (27, 56347), (28, 56362),

Gene: UAch1_68 Start: 57127, Stop: 57306, Start Num: 21

Candidate Starts for UAch1_68:

(9, 57034), (13, 57055), (14, 57064), (Start: 21 @57127 has 1 MA's), (Start: 24 @57154 has 1 MA's), (33, 57277),

Gene: Wooper_63 Start: 51561, Stop: 51731, Start Num: 20

Candidate Starts for Wooper_63:

(Start: 19 @51552 has 2 MA's), (Start: 20 @51561 has 3 MA's), (30, 51693), (33, 51720),