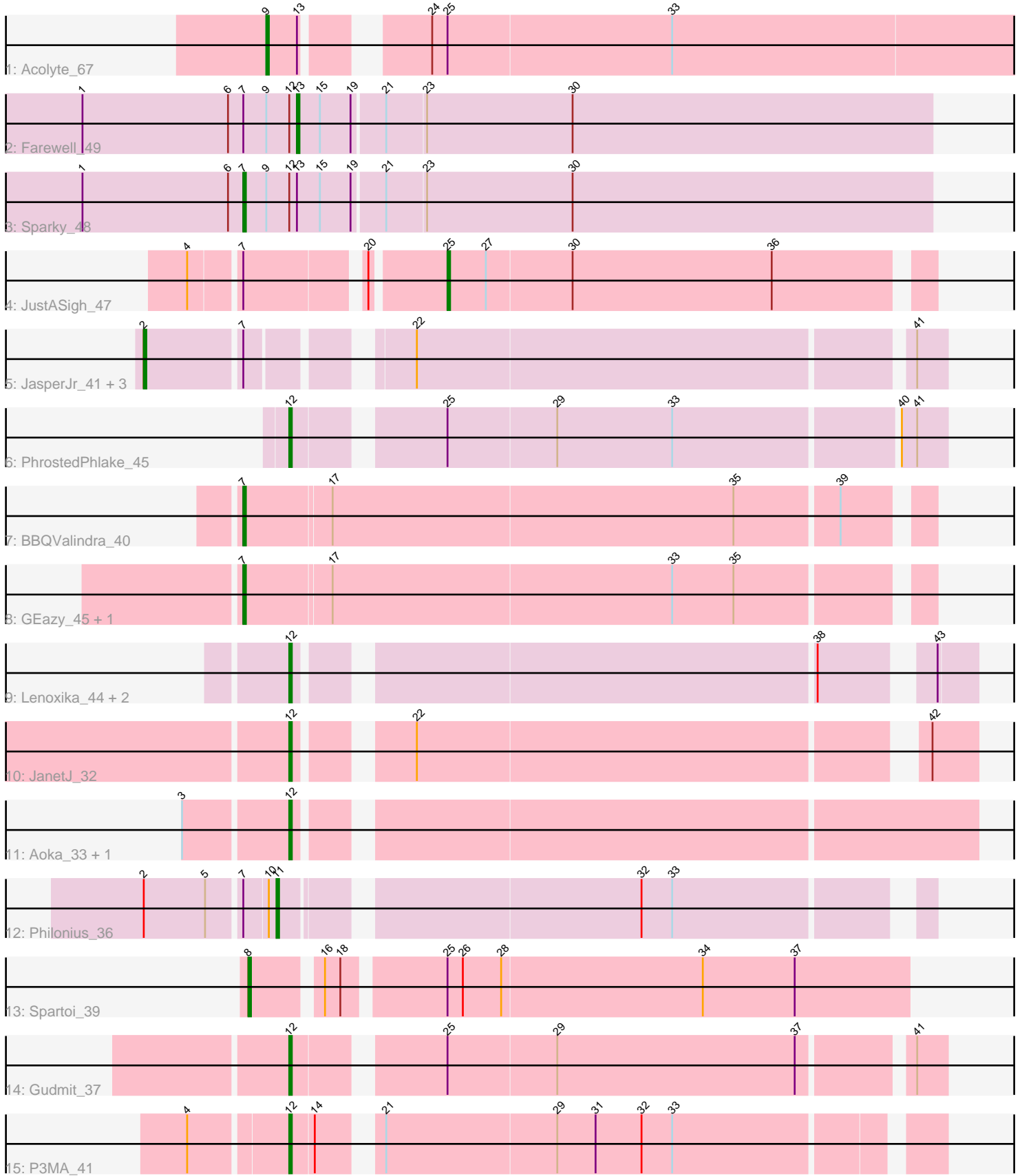


Pham 196808



Note: Tracks are now grouped by subcluster and scaled. Switching in subcluster is indicated by changes in track color. Track scale is now set by default to display the region 30 bp upstream of start 1 to 30 bp downstream of the last possible start. If this default region is judged to be packed too tightly with annotated starts, the track will be further scaled to only show that region of the ORF with annotated starts. This action will be indicated by adding "Zoomed" to the title. For starts, yellow indicates the location of called starts comprised solely of Glimmer/GeneMark auto-annotations, green indicates the location of called starts with at least 1 manual gene annotation.

Pham 196808 Report

This analysis was run 12/09/24 on database version 580.

Pham number 196808 has 22 members, 2 are drafts.

Phages represented in each track:

- Track 1 : Acolyte_67
- Track 2 : Farewell_49
- Track 3 : Sparky_48
- Track 4 : JustASigh_47
- Track 5 : JasperJr_41, Hitter_44, Guacamole_41, Walrus_42
- Track 6 : PhrostedPhlake_45
- Track 7 : BBQValindra_40
- Track 8 : GEazy_45, HannahD_43
- Track 9 : Lenoxika_44, Nandita_44, Ryan_44
- Track 10 : JanetJ_32
- Track 11 : Aoka_33, EvenBluerMoon_39
- Track 12 : Philonius_36
- Track 13 : Spartoi_39
- Track 14 : Gudmit_37
- Track 15 : P3MA_41

Summary of Final Annotations (See graph section above for start numbers):

The start number called the most often in the published annotations is 12, it was called in 7 of the 20 non-draft genes in the pham.

Genes that call this "Most Annotated" start:

- Aoka_33, EvenBluerMoon_39, Gudmit_37, JanetJ_32, Lenoxika_44, Nandita_44, P3MA_41, PhrostedPhlake_45, Ryan_44,

Genes that have the "Most Annotated" start but do not call it:

- Farewell_49, Sparky_48,

Genes that do not have the "Most Annotated" start:

- Acolyte_67, BBQValindra_40, GEazy_45, Guacamole_41, HannahD_43, Hitter_44, JasperJr_41, JustASigh_47, Philonius_36, Spartoi_39, Walrus_42,

Summary by start number:

Start 2:

- Found in 5 of 22 (22.7%) of genes in pham
- Manual Annotations of this start: 4 of 20
- Called 80.0% of time when present
- Phage (with cluster) where this start called: Guacamole_41 (CV), Hitter_44 (CV), JasperJr_41 (CV), Walrus_42 (CV),

Start 7:

- Found in 11 of 22 (50.0%) of genes in pham
- Manual Annotations of this start: 4 of 20
- Called 36.4% of time when present
- Phage (with cluster) where this start called: BBQValindra_40 (DB), GEazy_45 (DB), HannahD_43 (DB), Sparky_48 (AF),

Start 8:

- Found in 1 of 22 (4.5%) of genes in pham
- Manual Annotations of this start: 1 of 20
- Called 100.0% of time when present
- Phage (with cluster) where this start called: Spartoi_39 (singleton),

Start 9:

- Found in 3 of 22 (13.6%) of genes in pham
- Manual Annotations of this start: 1 of 20
- Called 33.3% of time when present
- Phage (with cluster) where this start called: Acolyte_67 (A2),

Start 11:

- Found in 1 of 22 (4.5%) of genes in pham
- Manual Annotations of this start: 1 of 20
- Called 100.0% of time when present
- Phage (with cluster) where this start called: Philonius_36 (N),

Start 12:

- Found in 11 of 22 (50.0%) of genes in pham
- Manual Annotations of this start: 7 of 20
- Called 81.8% of time when present
- Phage (with cluster) where this start called: Aoka_33 (FO), EvenBluerMoon_39 (FO), Gudmit_37 (singleton), JanetJ_32 (FO), Lenoxika_44 (FF), Nandita_44 (FF), P3MA_41 (singleton), PhrostedPhlake_45 (CV), Ryan_44 (FF),

Start 13:

- Found in 3 of 22 (13.6%) of genes in pham
- Manual Annotations of this start: 1 of 20
- Called 33.3% of time when present
- Phage (with cluster) where this start called: Farewell_49 (AF),

Start 25:

- Found in 5 of 22 (22.7%) of genes in pham
- Manual Annotations of this start: 1 of 20
- Called 20.0% of time when present
- Phage (with cluster) where this start called: JustASigh_47 (AH),

Summary by clusters:

There are 9 clusters represented in this pham: singleton, AF, AH, DB, N, A2, FF, CV, FO,

Info for manual annotations of cluster A2:

- Start number 9 was manually annotated 1 time for cluster A2.

Info for manual annotations of cluster AF:

- Start number 7 was manually annotated 1 time for cluster AF.
- Start number 13 was manually annotated 1 time for cluster AF.

Info for manual annotations of cluster AH:

- Start number 25 was manually annotated 1 time for cluster AH.

Info for manual annotations of cluster CV:

- Start number 2 was manually annotated 4 times for cluster CV.
- Start number 12 was manually annotated 1 time for cluster CV.

Info for manual annotations of cluster DB:

- Start number 7 was manually annotated 3 times for cluster DB.

Info for manual annotations of cluster FF:

- Start number 12 was manually annotated 2 times for cluster FF.

Info for manual annotations of cluster FO:

- Start number 12 was manually annotated 2 times for cluster FO.

Info for manual annotations of cluster N:

- Start number 11 was manually annotated 1 time for cluster N.

Gene Information:

Gene: Acolyte_67 Start: 43619, Stop: 43897, Start Num: 9

Candidate Starts for Acolyte_67:

(Start: 9 @43619 has 1 MA's), (Start: 13 @43631 has 1 MA's), (24, 43667), (Start: 25 @43673 has 1 MA's), (33, 43760),

Gene: Aoka_33 Start: 26261, Stop: 26512, Start Num: 12

Candidate Starts for Aoka_33:

(3, 26222), (Start: 12 @26261 has 7 MA's),

Gene: BBQValindra_40 Start: 33028, Stop: 33285, Start Num: 7

Candidate Starts for BBQValindra_40:

(Start: 7 @33028 has 4 MA's), (17, 33061), (35, 33217), (39, 33256),

Gene: EvenBluerMoon_39 Start: 26499, Stop: 26750, Start Num: 12

Candidate Starts for EvenBluerMoon_39:

(3, 26460), (Start: 12 @26499 has 7 MA's),

Gene: Farewell_49 Start: 36104, Stop: 36349, Start Num: 13

Candidate Starts for Farewell_49:

(1, 36020), (6, 36077), (Start: 7 @36083 has 4 MA's), (Start: 9 @36092 has 1 MA's), (Start: 12 @36101 has 7 MA's), (Start: 13 @36104 has 1 MA's), (15, 36113), (19, 36125), (21, 36137), (23, 36152), (30, 36209),

Gene: GEazy_45 Start: 32607, Stop: 32864, Start Num: 7
Candidate Starts for GEazy_45:
(Start: 7 @32607 has 4 MA's), (17, 32640), (33, 32772), (35, 32796),

Gene: Guacamole_41 Start: 33011, Stop: 33295, Start Num: 2
Candidate Starts for Guacamole_41:
(Start: 2 @33011 has 4 MA's), (Start: 7 @33047 has 4 MA's), (22, 33098), (41, 33284),

Gene: Gudmit_37 Start: 27130, Stop: 27366, Start Num: 12
Candidate Starts for Gudmit_37:
(Start: 12 @27130 has 7 MA's), (Start: 25 @27181 has 1 MA's), (29, 27223), (37, 27316), (41, 27355),

Gene: HannahD_43 Start: 31974, Stop: 32231, Start Num: 7
Candidate Starts for HannahD_43:
(Start: 7 @31974 has 4 MA's), (17, 32007), (33, 32139), (35, 32163),

Gene: Hitter_44 Start: 32655, Stop: 32939, Start Num: 2
Candidate Starts for Hitter_44:
(Start: 2 @32655 has 4 MA's), (Start: 7 @32691 has 4 MA's), (22, 32742), (41, 32928),

Gene: JanetJ_32 Start: 26887, Stop: 27126, Start Num: 12
Candidate Starts for JanetJ_32:
(Start: 12 @26887 has 7 MA's), (22, 26923), (42, 27109),

Gene: JasperJr_41 Start: 33011, Stop: 33295, Start Num: 2
Candidate Starts for JasperJr_41:
(Start: 2 @33011 has 4 MA's), (Start: 7 @33047 has 4 MA's), (22, 33098), (41, 33284),

Gene: JustASigh_47 Start: 34656, Stop: 34838, Start Num: 25
Candidate Starts for JustASigh_47:
(4, 34569), (Start: 7 @34587 has 4 MA's), (20, 34629), (Start: 25 @34656 has 1 MA's), (27, 34671), (30, 34704), (36, 34782),

Gene: Lenoxika_44 Start: 30350, Stop: 30589, Start Num: 12
Candidate Starts for Lenoxika_44:
(Start: 12 @30350 has 7 MA's), (38, 30539), (43, 30575),

Gene: Nandita_44 Start: 30213, Stop: 30452, Start Num: 12
Candidate Starts for Nandita_44:
(Start: 12 @30213 has 7 MA's), (38, 30402), (43, 30438),

Gene: P3MA_41 Start: 31122, Stop: 31355, Start Num: 12
Candidate Starts for P3MA_41:
(4, 31086), (Start: 12 @31122 has 7 MA's), (14, 31131), (21, 31149), (29, 31215), (31, 31230), (32, 31248), (33, 31260),

Gene: Philonius_36 Start: 27911, Stop: 28141, Start Num: 11
Candidate Starts for Philonius_36:

(Start: 2 @27863 has 4 MA's), (5, 27887), (Start: 7 @27899 has 4 MA's), (10, 27908), (Start: 11 @27911 has 1 MA's), (32, 28040), (33, 28052),

Gene: PhrostedPhlake_45 Start: 32973, Stop: 33212, Start Num: 12

Candidate Starts for PhrostedPhlake_45:

(Start: 12 @32973 has 7 MA's), (Start: 25 @33024 has 1 MA's), (29, 33066), (33, 33111), (40, 33195), (41, 33201),

Gene: Ryan_44 Start: 30762, Stop: 31001, Start Num: 12

Candidate Starts for Ryan_44:

(Start: 12 @30762 has 7 MA's), (38, 30951), (43, 30987),

Gene: Sparky_48 Start: 36514, Stop: 36780, Start Num: 7

Candidate Starts for Sparky_48:

(1, 36451), (6, 36508), (Start: 7 @36514 has 4 MA's), (Start: 9 @36523 has 1 MA's), (Start: 12 @36532 has 7 MA's), (Start: 13 @36535 has 1 MA's), (15, 36544), (19, 36556), (21, 36568), (23, 36583), (30, 36640),

Gene: Spartoi_39 Start: 26733, Stop: 26978, Start Num: 8

Candidate Starts for Spartoi_39:

(Start: 8 @26733 has 1 MA's), (16, 26757), (18, 26763), (Start: 25 @26799 has 1 MA's), (26, 26805), (28, 26820), (34, 26898), (37, 26934),

Gene: Walrus_42 Start: 32790, Stop: 33074, Start Num: 2

Candidate Starts for Walrus_42:

(Start: 2 @32790 has 4 MA's), (Start: 7 @32826 has 4 MA's), (22, 32877), (41, 33063),