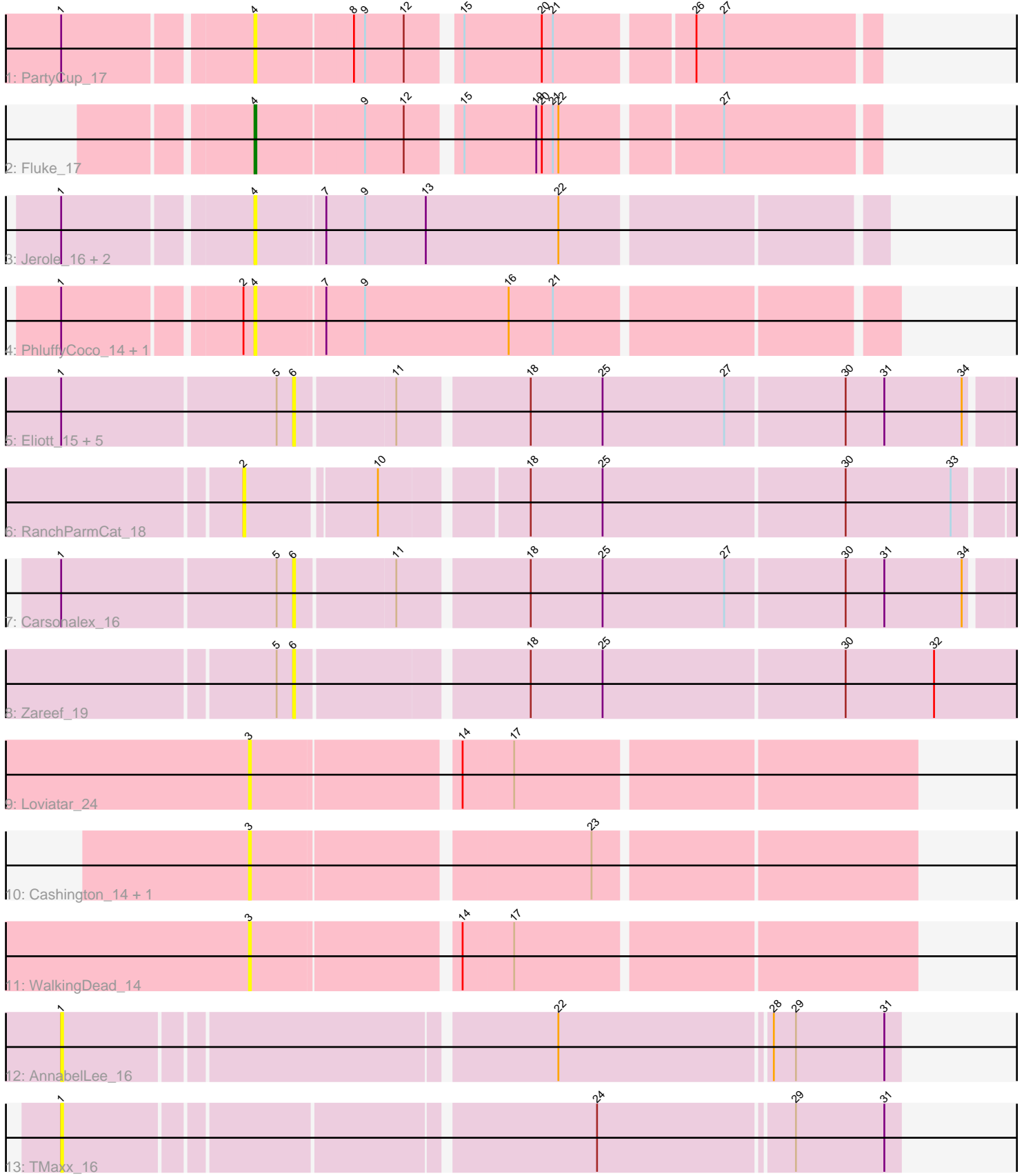


Pham 196814



Note: Tracks are now grouped by subcluster and scaled. Switching in subcluster is indicated by changes in track color. Track scale is now set by default to display the region 30 bp upstream of start 1 to 30 bp downstream of the last possible start. If this default region is judged to be packed too tightly with annotated starts, the track will be further scaled to only show that region of the ORF with annotated starts. This action will be indicated by adding "Zoomed" to the title. For starts, yellow indicates the location of called starts comprised solely of Glimmer/GeneMark auto-annotations, green indicates the location of called starts with at least 1 manual gene annotation.

Pham 196814 Report

This analysis was run 12/09/24 on database version 580.

Pham number 196814 has 22 members, 21 are drafts.

Phages represented in each track:

- Track 1 : PartyCup_17
- Track 2 : Fluke_17
- Track 3 : Jerole_16, Bedetta_16, Colusalem_15
- Track 4 : PhluffyCoco_14, Camara_14
- Track 5 : Elliott_15, GoldHunter_16, PsychoKiller_15, Typhonomachy_16, Sopespian_15, RedBaron_16
- Track 6 : RanchParmCat_18
- Track 7 : Carsonalex_16
- Track 8 : Zareef_19
- Track 9 : Loviatar_24
- Track 10 : Cashington_14, Kate33_14
- Track 11 : WalkingDead_14
- Track 12 : AnnabelLee_16
- Track 13 : TMaxx_16

Summary of Final Annotations (See graph section above for start numbers):

The start number called the most often in the published annotations is 4, it was called in 1 of the 1 non-draft genes in the pham.

Genes that call this "Most Annotated" start:

- Bedetta_16, Camara_14, Colusalem_15, Fluke_17, Jerole_16, PartyCup_17, PhluffyCoco_14,

Genes that have the "Most Annotated" start but do not call it:

-

Genes that do not have the "Most Annotated" start:

- AnnabelLee_16, Carsonalex_16, Cashington_14, Elliott_15, GoldHunter_16, Kate33_14, Loviatar_24, PsychoKiller_15, RanchParmCat_18, RedBaron_16, Sopespian_15, TMaxx_16, Typhonomachy_16, WalkingDead_14, Zareef_19,

Summary by start number:

Start 1:

- Found in 15 of 22 (68.2%) of genes in pham
- No Manual Annotations of this start.
- Called 13.3% of time when present
- Phage (with cluster) where this start called: AnnabelLee_16 (FR), TMaxx_16 (FR),

Start 2:

- Found in 3 of 22 (13.6%) of genes in pham
- No Manual Annotations of this start.
- Called 33.3% of time when present
- Phage (with cluster) where this start called: RanchParmCat_18 (CT),

Start 3:

- Found in 4 of 22 (18.2%) of genes in pham
- No Manual Annotations of this start.
- Called 100.0% of time when present
- Phage (with cluster) where this start called: Cashington_14 (EB), Kate33_14 (EB), Loviatar_24 (EB), WalkingDead_14 (EB),

Start 4:

- Found in 7 of 22 (31.8%) of genes in pham
- Manual Annotations of this start: 1 of 1
- Called 100.0% of time when present
- Phage (with cluster) where this start called: Bedetta_16 (AS2), Camara_14 (AS3), Colusalem_15 (AS2), Fluke_17 (AK), Jerole_16 (AS2), PartyCup_17 (AK), PhluffyCoco_14 (AS3),

Start 6:

- Found in 8 of 22 (36.4%) of genes in pham
- No Manual Annotations of this start.
- Called 100.0% of time when present
- Phage (with cluster) where this start called: Carsonalex_16 (CT), Elliott_15 (CT), GoldHunter_16 (CT), PsychoKiller_15 (CT), RedBaron_16 (CT), Sopespian_15 (CT), Typhonomachy_16 (CT), Zareef_19 (CT),

Summary by clusters:

There are 6 clusters represented in this pham: AS3, AS2, FR, AK, EB, CT,

Info for manual annotations of cluster AK:

- Start number 4 was manually annotated 1 time for cluster AK.

Gene Information:

Gene: AnnabelLee_16 Start: 9135, Stop: 9566, Start Num: 1

Candidate Starts for AnnabelLee_16:

(1, 9135), (22, 9387), (28, 9498), (29, 9510), (31, 9558),

Gene: Bedetta_16 Start: 10036, Stop: 10362, Start Num: 4

Candidate Starts for Bedetta_16:

(1, 9940), (Start: 4 @10036 has 1 MA's), (7, 10072), (9, 10093), (13, 10126), (22, 10198),

Gene: Camara_14 Start: 9453, Stop: 9785, Start Num: 4

Candidate Starts for Camara_14:

(1, 9357), (2, 9447), (Start: 4 @9453 has 1 MA's), (7, 9489), (9, 9510), (16, 9588), (21, 9612),

Gene: Carsonalex_16 Start: 9317, Stop: 9697, Start Num: 6

Candidate Starts for Carsonalex_16:

(1, 9194), (5, 9308), (6, 9317), (11, 9368), (18, 9434), (25, 9473), (27, 9539), (30, 9602), (31, 9623), (34, 9665),

Gene: Cashington_14 Start: 9610, Stop: 9951, Start Num: 3

Candidate Starts for Cashington_14:

(3, 9610), (23, 9784),

Gene: Colusalem_15 Start: 9875, Stop: 10201, Start Num: 4

Candidate Starts for Colusalem_15:

(1, 9779), (Start: 4 @9875 has 1 MA's), (7, 9911), (9, 9932), (13, 9965), (22, 10037),

Gene: Elliott_15 Start: 9259, Stop: 9639, Start Num: 6

Candidate Starts for Elliott_15:

(1, 9136), (5, 9250), (6, 9259), (11, 9310), (18, 9376), (25, 9415), (27, 9481), (30, 9544), (31, 9565), (34, 9607),

Gene: Fluke_17 Start: 12295, Stop: 12609, Start Num: 4

Candidate Starts for Fluke_17:

(Start: 4 @12295 has 1 MA's), (9, 12352), (12, 12373), (15, 12397), (19, 12436), (20, 12439), (21, 12445), (22, 12448), (27, 12529),

Gene: GoldHunter_16 Start: 9260, Stop: 9640, Start Num: 6

Candidate Starts for GoldHunter_16:

(1, 9137), (5, 9251), (6, 9260), (11, 9311), (18, 9377), (25, 9416), (27, 9482), (30, 9545), (31, 9566), (34, 9608),

Gene: Jerole_16 Start: 10036, Stop: 10362, Start Num: 4

Candidate Starts for Jerole_16:

(1, 9940), (Start: 4 @10036 has 1 MA's), (7, 10072), (9, 10093), (13, 10126), (22, 10198),

Gene: Kate33_14 Start: 9637, Stop: 9978, Start Num: 3

Candidate Starts for Kate33_14:

(3, 9637), (23, 9811),

Gene: Loviatar_24 Start: 9883, Stop: 10224, Start Num: 3

Candidate Starts for Loviatar_24:

(3, 9883), (14, 9988), (17, 10015),

Gene: PartyCup_17 Start: 12324, Stop: 12638, Start Num: 4

Candidate Starts for PartyCup_17:

(1, 12228), (Start: 4 @12324 has 1 MA's), (8, 12375), (9, 12381), (12, 12402), (15, 12426), (20, 12468), (21, 12474), (26, 12543), (27, 12558),

Gene: PhluffyCoco_14 Start: 9452, Stop: 9784, Start Num: 4

Candidate Starts for PhluffyCoco_14:

(1, 9356), (2, 9446), (Start: 4 @9452 has 1 MA's), (7, 9488), (9, 9509), (16, 9587), (21, 9611),

Gene: PsychoKiller_15 Start: 9259, Stop: 9639, Start Num: 6

Candidate Starts for PsychoKiller_15:

(1, 9136), (5, 9250), (6, 9259), (11, 9310), (18, 9376), (25, 9415), (27, 9481), (30, 9544), (31, 9565), (34, 9607),

Gene: RanchParmCat_18 Start: 9920, Stop: 10321, Start Num: 2

Candidate Starts for RanchParmCat_18:

(2, 9920), (10, 9986), (18, 10058), (25, 10097), (30, 10226), (33, 10283),

Gene: RedBaron_16 Start: 9303, Stop: 9683, Start Num: 6

Candidate Starts for RedBaron_16:

(1, 9180), (5, 9294), (6, 9303), (11, 9354), (18, 9420), (25, 9459), (27, 9525), (30, 9588), (31, 9609), (34, 9651),

Gene: Sopespian_15 Start: 9260, Stop: 9640, Start Num: 6

Candidate Starts for Sopespian_15:

(1, 9137), (5, 9251), (6, 9260), (11, 9311), (18, 9377), (25, 9416), (27, 9482), (30, 9545), (31, 9566), (34, 9608),

Gene: TMaxx_16 Start: 8992, Stop: 9420, Start Num: 1

Candidate Starts for TMaxx_16:

(1, 8992), (24, 9262), (29, 9364), (31, 9412),

Gene: Typhonomachy_16 Start: 9259, Stop: 9639, Start Num: 6

Candidate Starts for Typhonomachy_16:

(1, 9136), (5, 9250), (6, 9259), (11, 9310), (18, 9376), (25, 9415), (27, 9481), (30, 9544), (31, 9565), (34, 9607),

Gene: WalkingDead_14 Start: 9801, Stop: 10142, Start Num: 3

Candidate Starts for WalkingDead_14:

(3, 9801), (14, 9906), (17, 9933),

Gene: Zareef_19 Start: 10244, Stop: 10630, Start Num: 6

Candidate Starts for Zareef_19:

(5, 10235), (6, 10244), (18, 10361), (25, 10400), (30, 10529), (32, 10577),